



# Seattle transportation plan - Introduction

Presentation to the Seattle Bicycle Advisory Board  
Joanna Valencia, Jonathan Lewis (Policy & Planning)  
11/3/2021 Department of Transportation



**City of Seattle**

# Our vision, mission, and core values

**Vision:** Seattle is a thriving equitable community powered by dependable transportation

**Mission:** to deliver a transportation system that provides safe and affordable access to places and opportunities

Committed to **6 core values:**

- Equity
- Safety
- Mobility
- Sustainability
- Livability
- Excellence







My household only needs one car, which frees up my monthly budget for other things



I get home faster which gives me more time to do the things I want and to be with the people I care about



I don't need a car to meet my daily needs



The air is cleaner and my community is healthier and more active



I have multiple affordable, reliable, and convenient options to get to places



Goods are delivered reliably to my business



I feel safe bicycling and walking with my kids

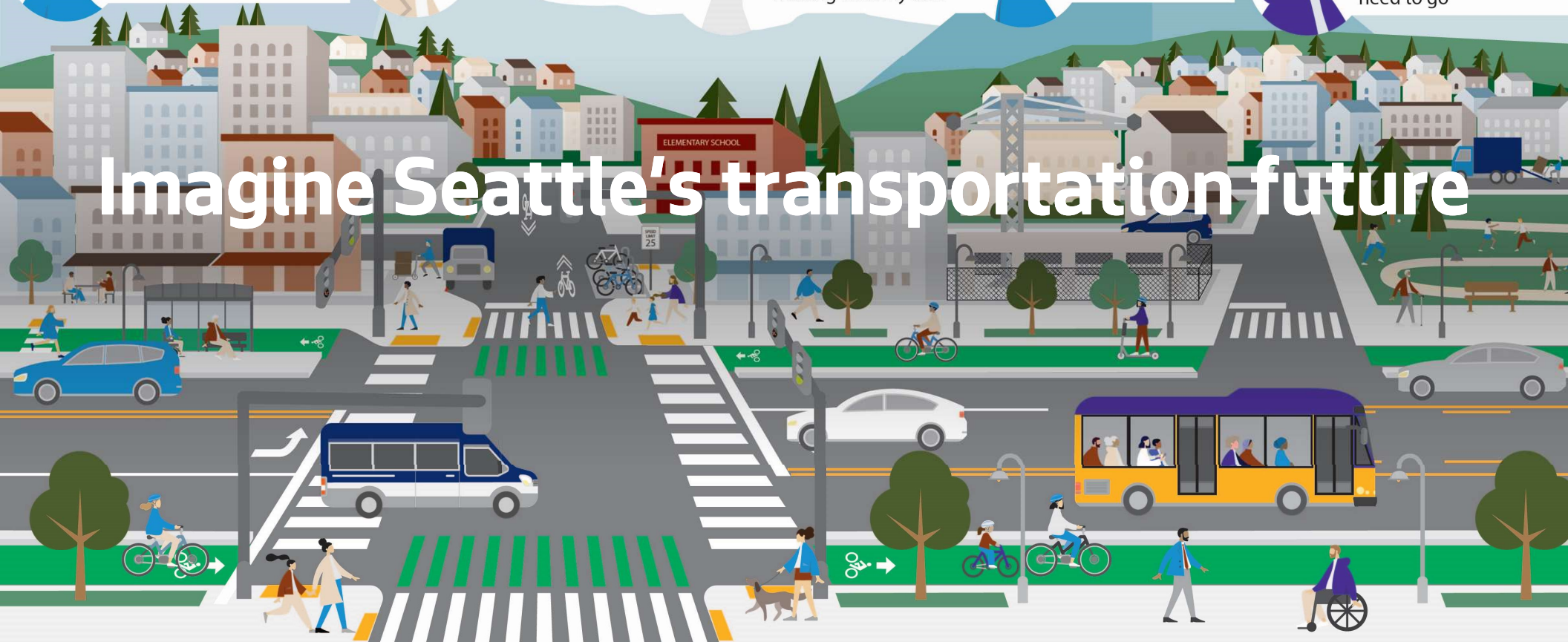


My commute time is more reliable



The street works for me and I can get where I need to go

# Imagine Seattle's transportation future



# SEATTLE'S BICYCLE NETWORK

*Make riding a bicycle a comfortable and integral part of daily life for people of all ages and abilities.*

Today, people in Seattle  
bicycle for about  
**2.5%** of all their trips.



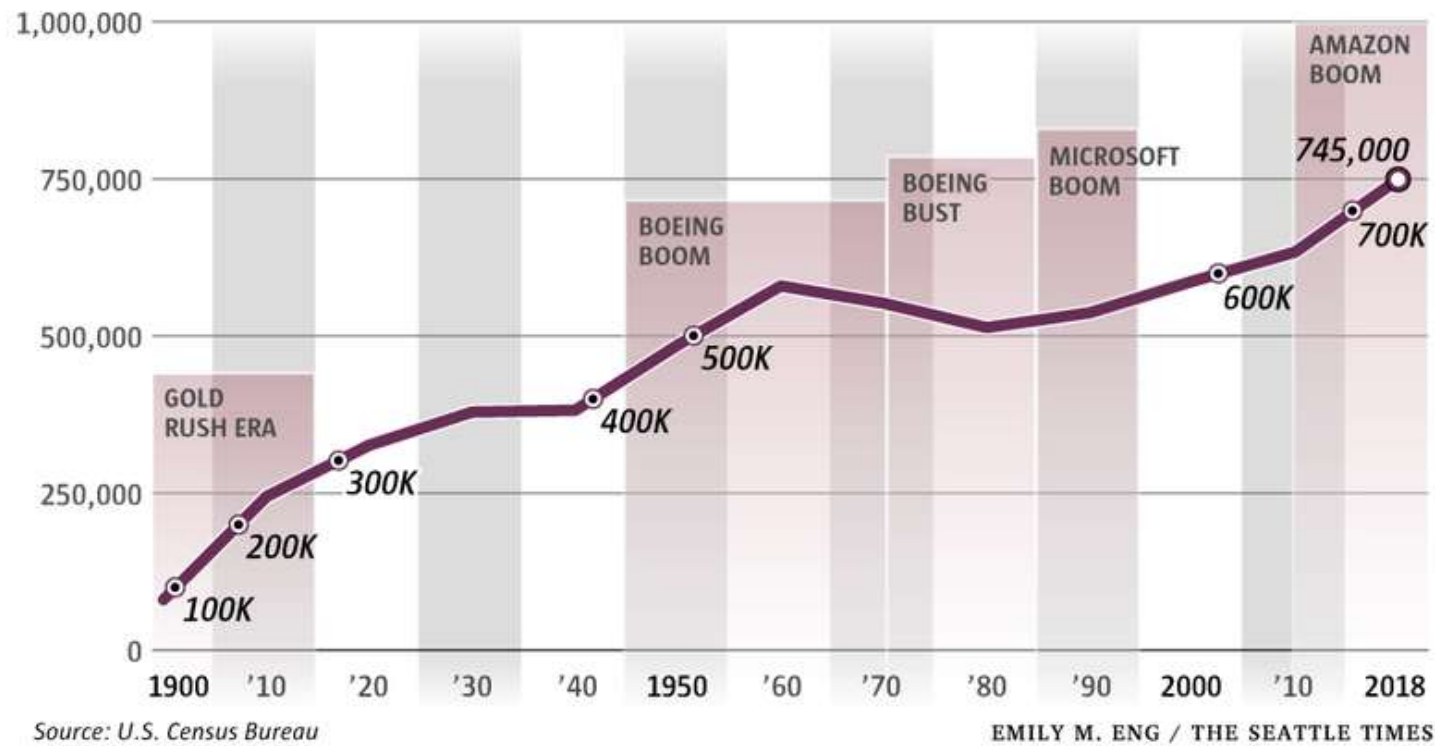
The Bicycle Master Plan goal is  
to increase bicycling by  
**4x** by 2030.



**32%** of Seattleites surveyed  
for the Bike Master Plan said  
inadequate bicycle facilities  
and gaps in the network  
present a barrier to bicycling.

## Be part of the change

# People want to live and work in Seattle



# Transportation supports a racially equitable & socially just city

## AUGUST LAKE CITY AND SOUTH PARK SENIOR CENTER FIELD TRIP

Flipping our trips with the Senior Regional Reduced Fare Permit Program





# Our streets are not getting bigger



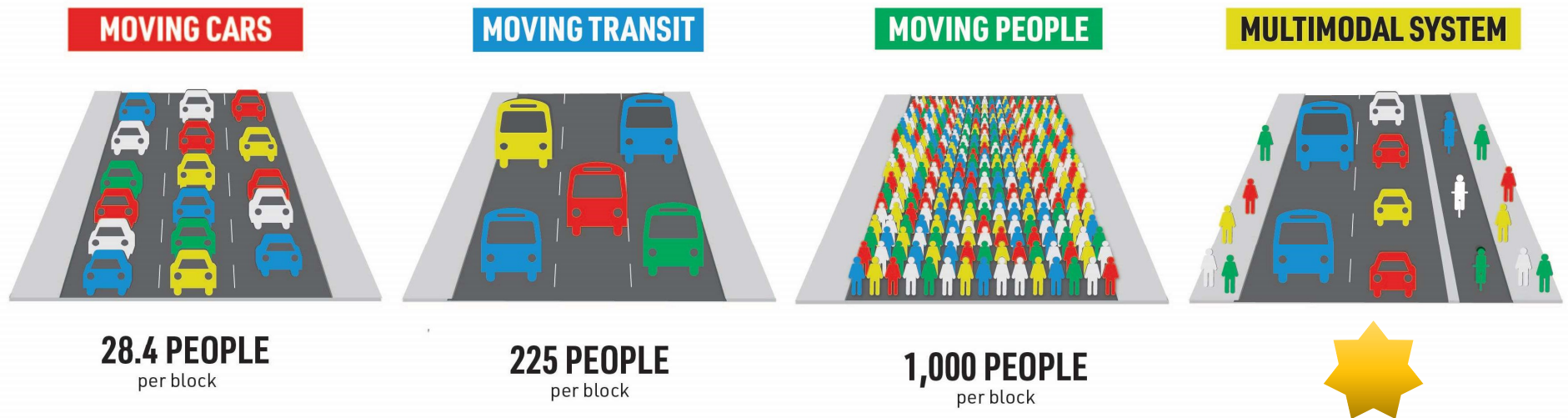
# We can influence climate change

2021 Heat Dome: Crews work to repair damage to Seattle roads caused by extreme heat





# Let's move people and goods safely, equitably, sustainably, and efficiently



Source: City Block assumed 40' curb to curb and 300' long. The space needs for pedestrians and vehicles based on 'Evaluating Transportation Land Use Impacts', Victoria Transport Policy Institute (2014). Average number of passengers per automobile calculated based on National Household Travel Survey Summary of Travel Trends (2009).

# And create a shared transportation vision







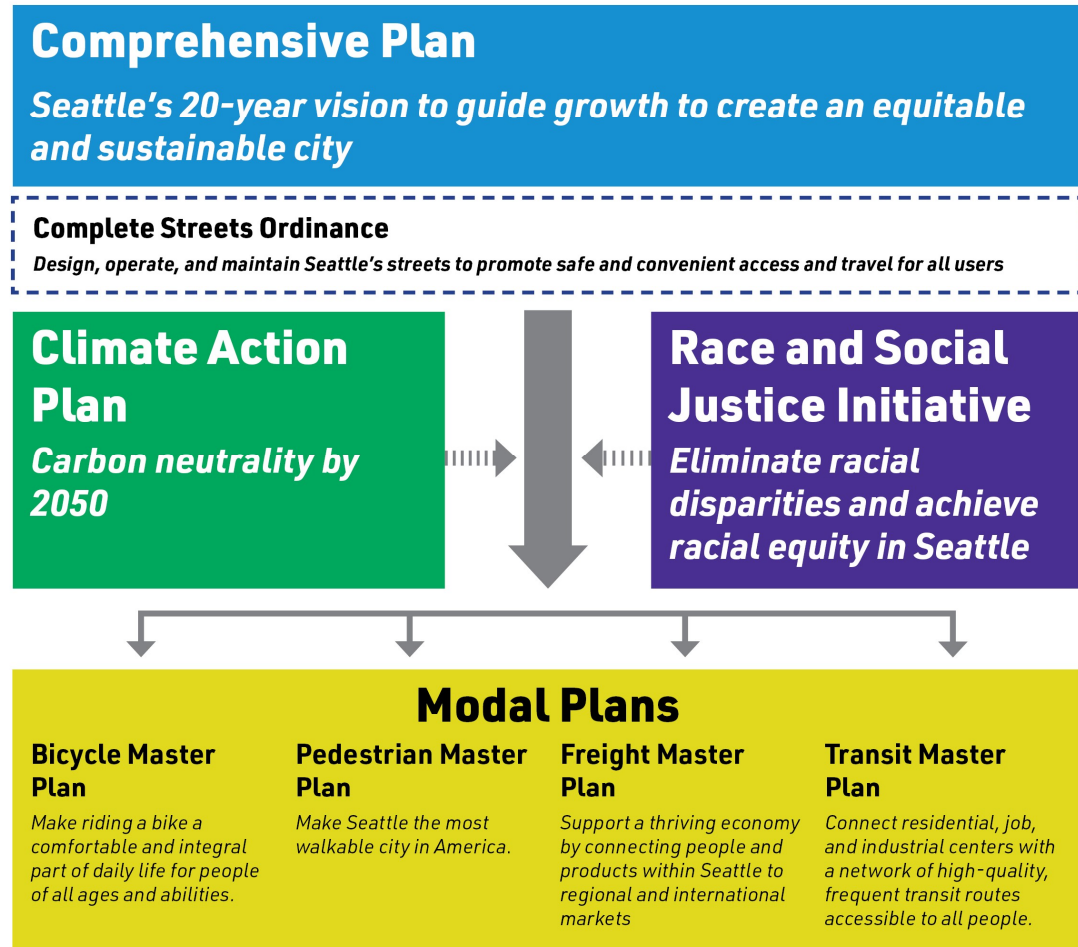
# Seattle Transportation Plan

- Launch multi-year planning effort for an equitable and resilient transportation system that considers all travel needs
- Engage with community to ensure plan reflects values, needs and priorities
- Identify an implementation strategy and inform the next transportation funding package





# Step 1: Build from our foundation and past community input



## Step 2: Grow the discussion

Focus on mobility needs, not mode-specific needs

Include strategic direction and accountability to meet climate, equity, and safety goals

Align funding strategies with our vision and values, including what to build and how to maintain



## Step 2: Grow the discussion

Develop policies for getting around that align with safety, equity, and sustainability goals and for more and different uses of our streets and sidewalks





## Step 3: Build relationships

**Build partnerships with community** to create informed recommendations **centering racial equity**. Use this opportunity to embody SDOT's Transportation Equity Framework and improve transparency and accountability.

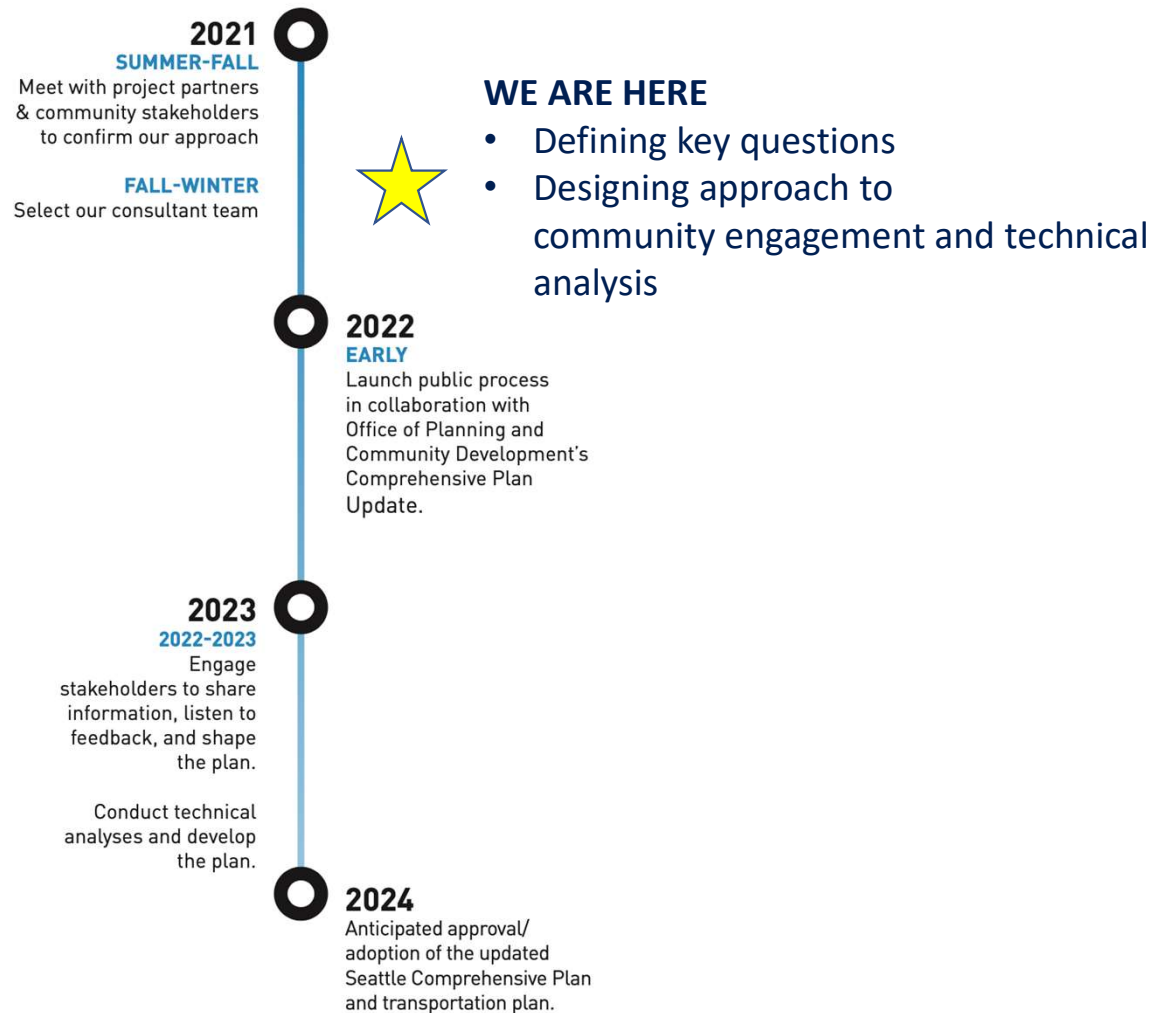
Transform our typical planning process by directly addressing and attempting to correct past and current harms through resulting programs, services, and projects.



# Public engagement partners



# Timeline







My household only needs one car, which frees up my monthly budget for other things



I get home faster which gives me more time to do the things I want and to be with the people I care about



I don't need a car to meet my daily needs



The air is cleaner and my community is healthier and more active



I have multiple affordable, reliable, and convenient options to get to places



Goods are delivered reliably to my business



I feel safe bicycling and walking with my kids



My commute time is more reliable



The street works for me and I can get where I need to go

# Imagine Seattle's transportation future

## Be a part of the change



# Questions?

[Joanna.Valencia@seattle.gov](mailto:Joanna.Valencia@seattle.gov)  
[Jonathan.Lewis@seattle.gov](mailto:Jonathan.Lewis@seattle.gov)

[www.seattle.gov/transportation](http://www.seattle.gov/transportation)

