

# Georgetown to Downtown Safety Project Nearing Final Design

November 2023



# Project Team



**Ching Chan**

Public Engagement Lead



**Ryan Moore**

Senior Project Manager



**Jonathan Frazier**

Transportation Planner



# Our Vision, Mission, Values, & Goals

Seattle is a thriving equitable community powered by dependable transportation. We're on a mission to deliver a transportation system that provides safe and affordable access to places and opportunities.

## Core Values & Goals:

Equity, Safety, Mobility, Sustainability, Livability, and Excellence.



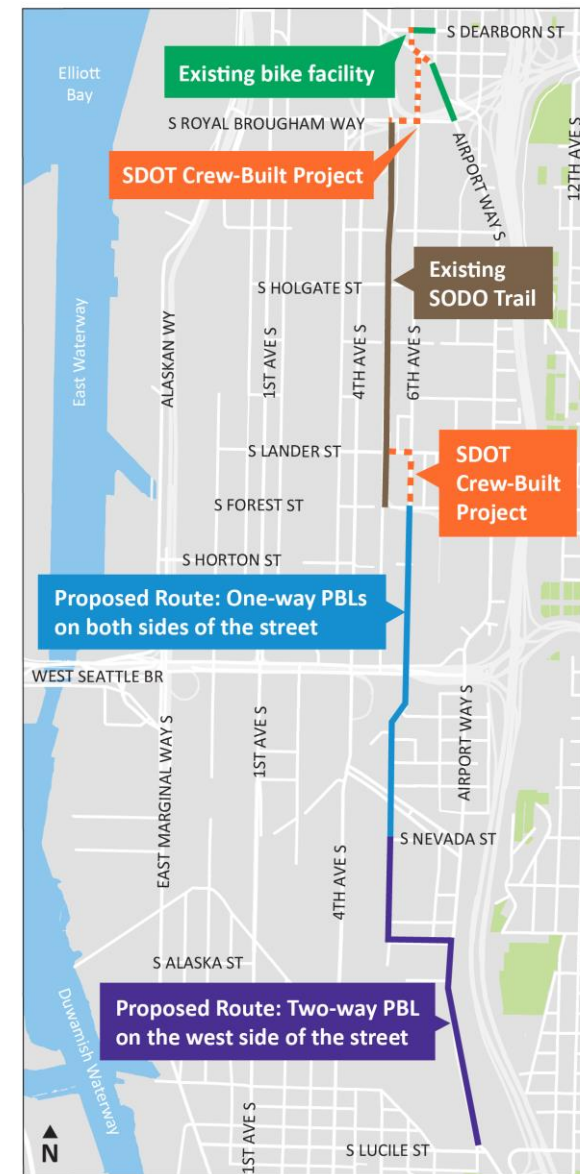
# Presentation overview

- Project route
- Project goals
- Response to 60% design feedback
- Nearing final design
- Next steps
- Q&A



# Project Route

- A) Two-way PBL on the west side of the street from Airport Way S and S Lucile St to S Nevada St and 6th Ave S
- B) One-way PBLs on 6th Ave S from S Nevada St to S Lander St
- C) Short connecting segments:
  - from 6th Ave S and S Lander St to the SODO Trail via S Lander St
  - between the northern end of the SODO Trail and existing bike facilities downtown



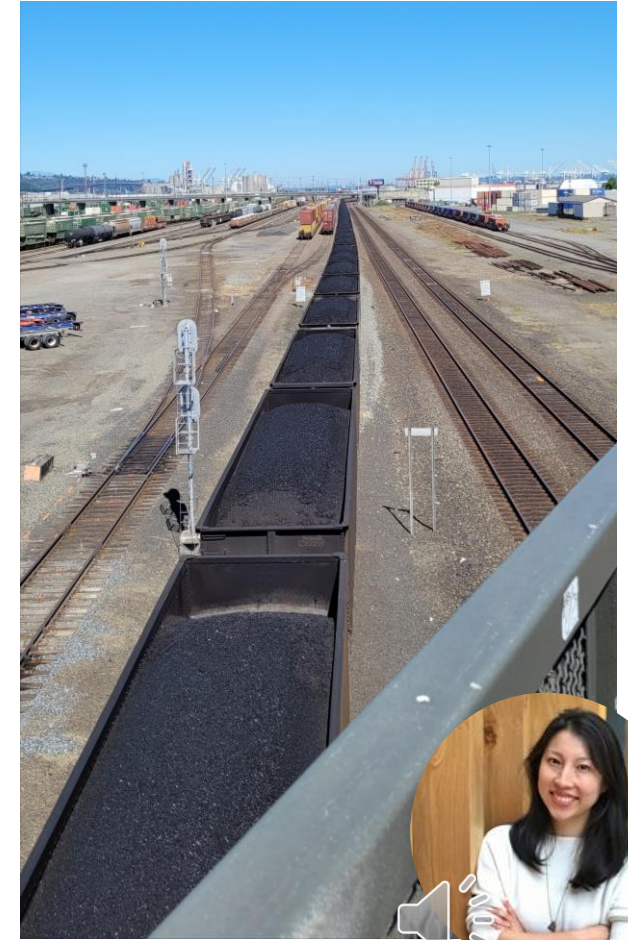
# Project Need & Vision

- Safety for all users
- Duwamish Valley routes a community priority during citywide 2019 Bicycle Master Plan outreach
- Connect Duwamish Valley and Georgetown neighborhoods to growing regional bike network
- Provide better access to SODO jobs and Link light rail
- Maintain freight and transit access



# Response to 60% design feedback

- Continued coordination with businesses and projects in the neighborhood
- Improved safety at driveways, intersections, and transitions
- Updated traffic signal timing at Airport Way S and S Lucile St
- Updated connection to SODO Trail at S Lander St instead of S Forest St



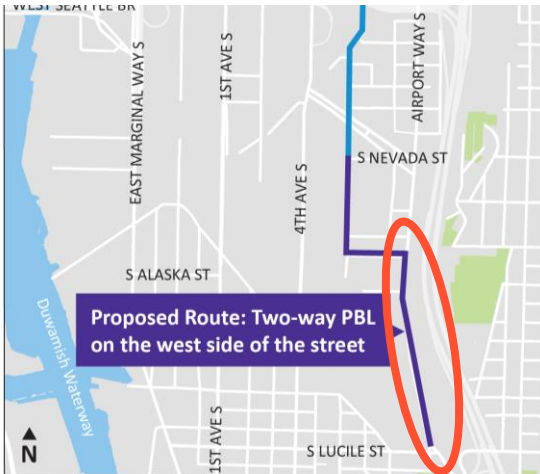
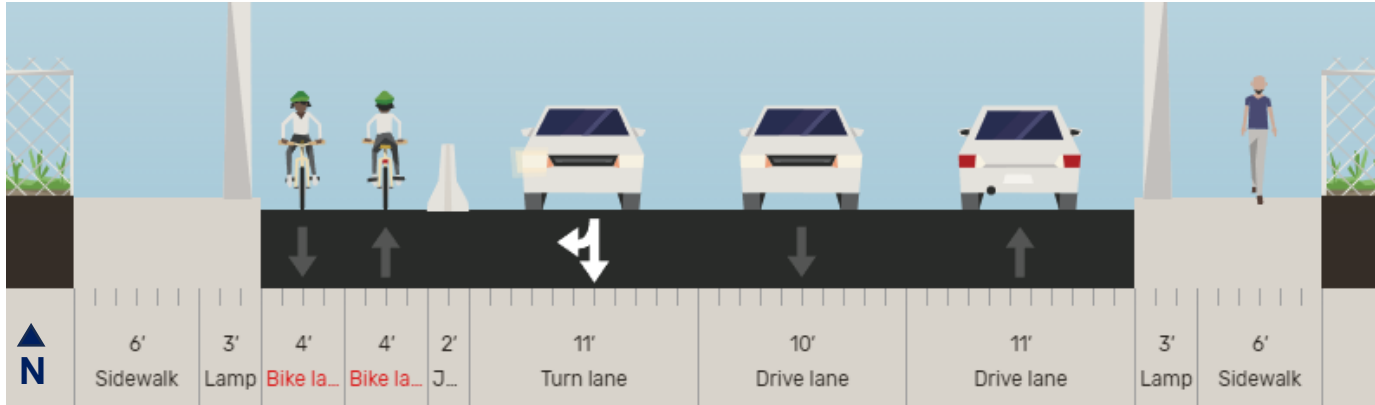
# Nearing Final Design

November 2023





# Airport Way S

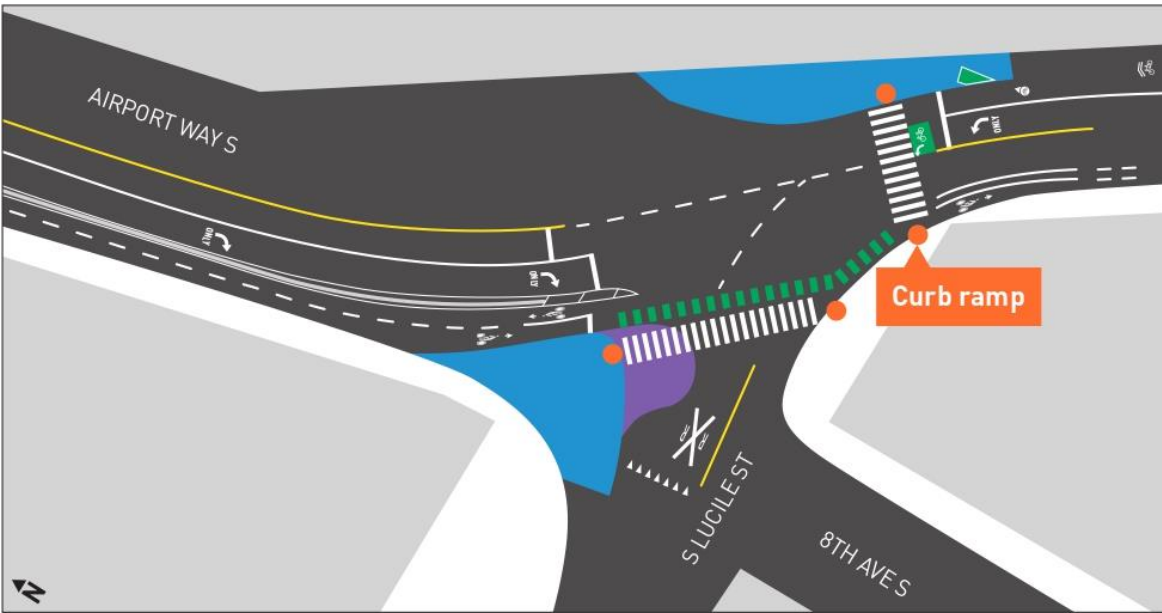


## Future cross section:

- Two-way PBL on west side
- One southbound Travel and a southbound Right-turn lane on bridge
- Center Turn Lane north of bridge
- Precast concrete barrier compatible with bridge



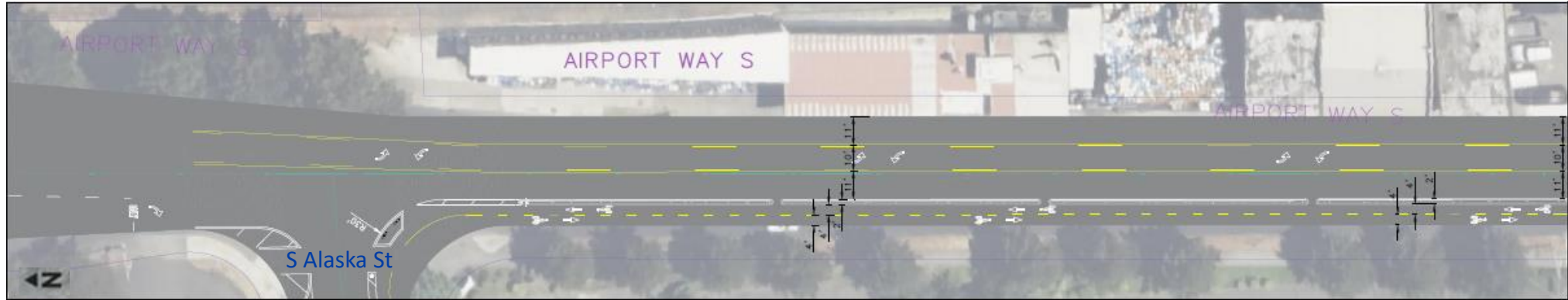
# S Lucile St and Airport Way S



- Extended island on northwest corner to allow freight turns and slow turning cars, while closing slip lane for bicycle safety
- Add two-way protected bike lane to west side of Airport Way S Bridge
  - Southbound bike lane continues partially south of Lucile St
  - Removal of one southbound lane, leaving one southbound through lane and one southbound right turn lane
- Bike crossing to/from west side of Airport Way
- Add new ADA compliant curb ramps and refresh crosswalk markings



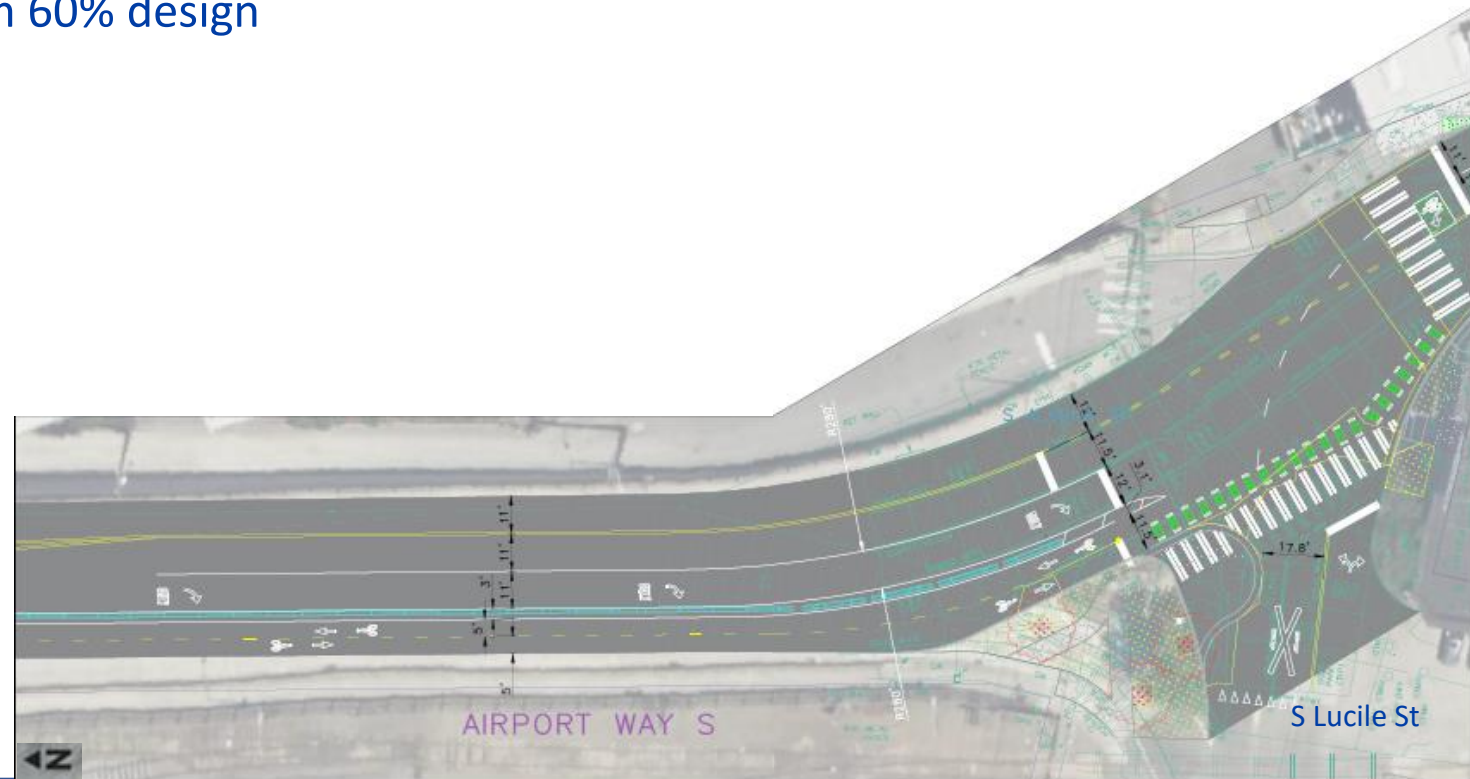
# Airport Way S: S Alaska St - S Lucile St



- Airport Way S between S Alaska St and S Lucile St: two-way protected bike lane on the west side of street
  - No significant changes from 60% design

# Airport Way S: S Alaska St - S Lucile St

- Airport Way S between S Alaska St and S Lucile St: two-way protected bike lane on the west side of street
  - No significant changes from 60% design



# 6th Ave S: S Snoqualmie St - S Nevada St



*Design will be similar to this configuration*

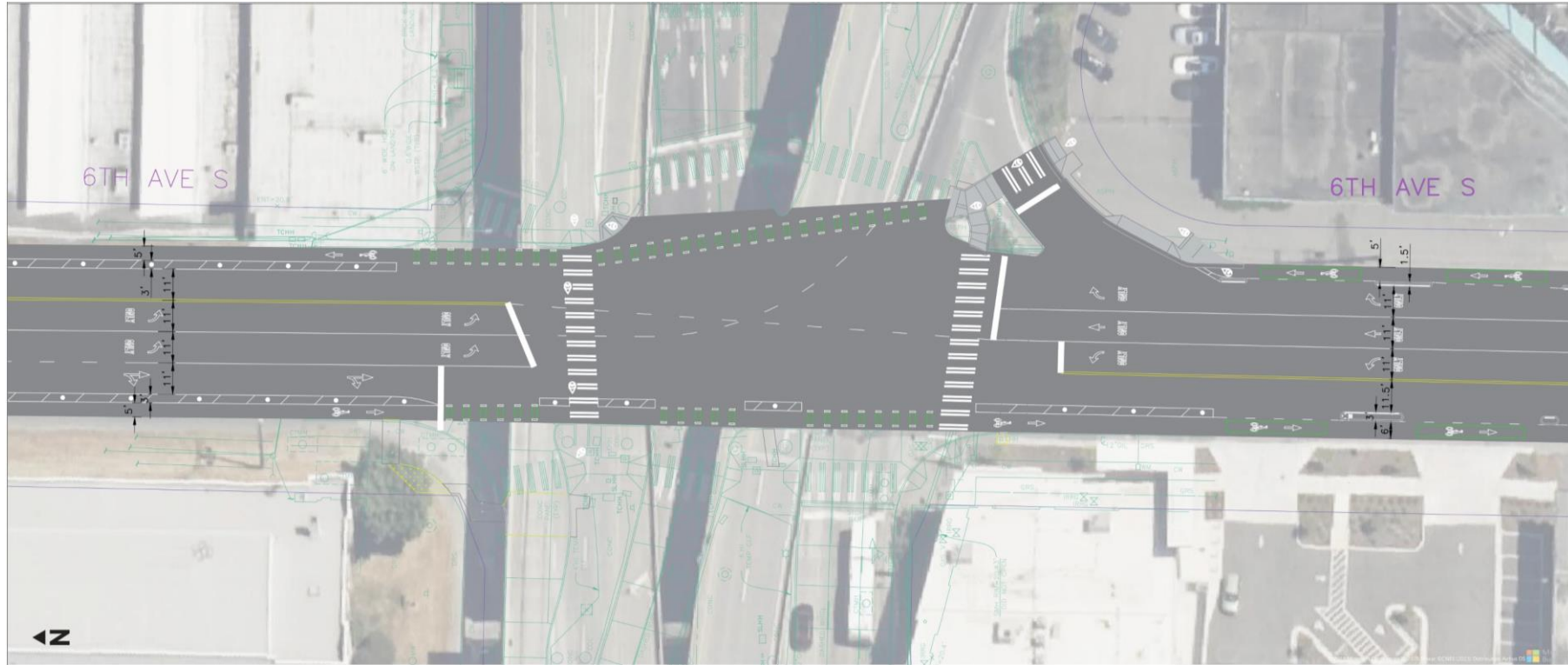
- Protects 18 existing trees
- Will require parking removal on east side of 6th Ave S
- Preserves two-way movement for freight traffic



# 6th Ave S: S Snoqualmie St - S Nevada St



# S Spokane St



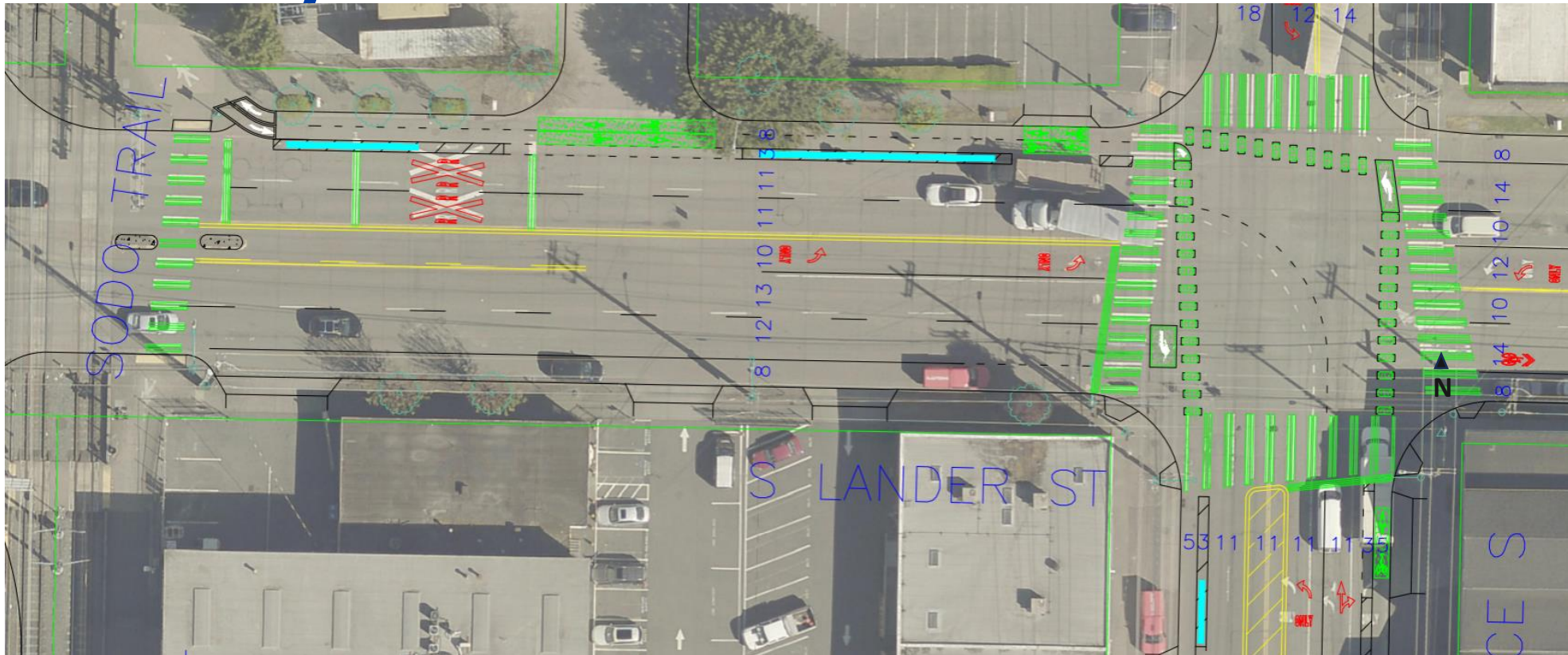
- New signal will stop vehicles turning right into slip lane in order to protect bicycles and pedestrians crossing S Spokane St on 6<sup>th</sup> Ave S
- Updated lane alignment for southbound vehicles







# 6th Ave S/S Lander St



- S Lander St between SODO Busway and 6th Ave S
  - Two-way protected bike lane replaces parking on north side
  - Parking retained on south side
  - Interim condition prior to Sound Transit construction in late 2020s



# Interim North Connection

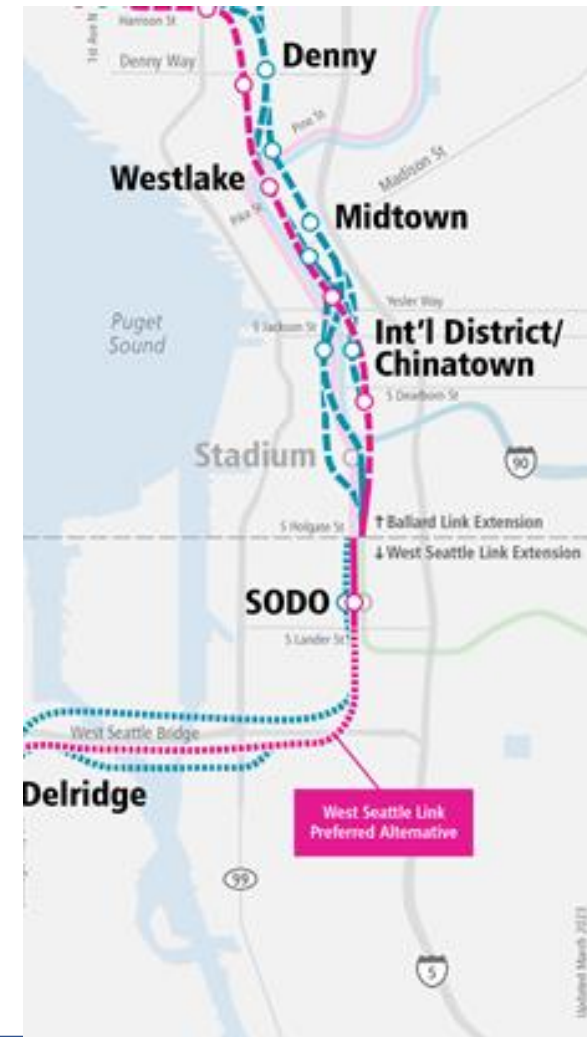


- Upgrade protected bike lanes and paths
- Short new protected bike lanes and trail segments
- Improve wayfinding for the SODO Trail
- Will be constructed by SDOT crews

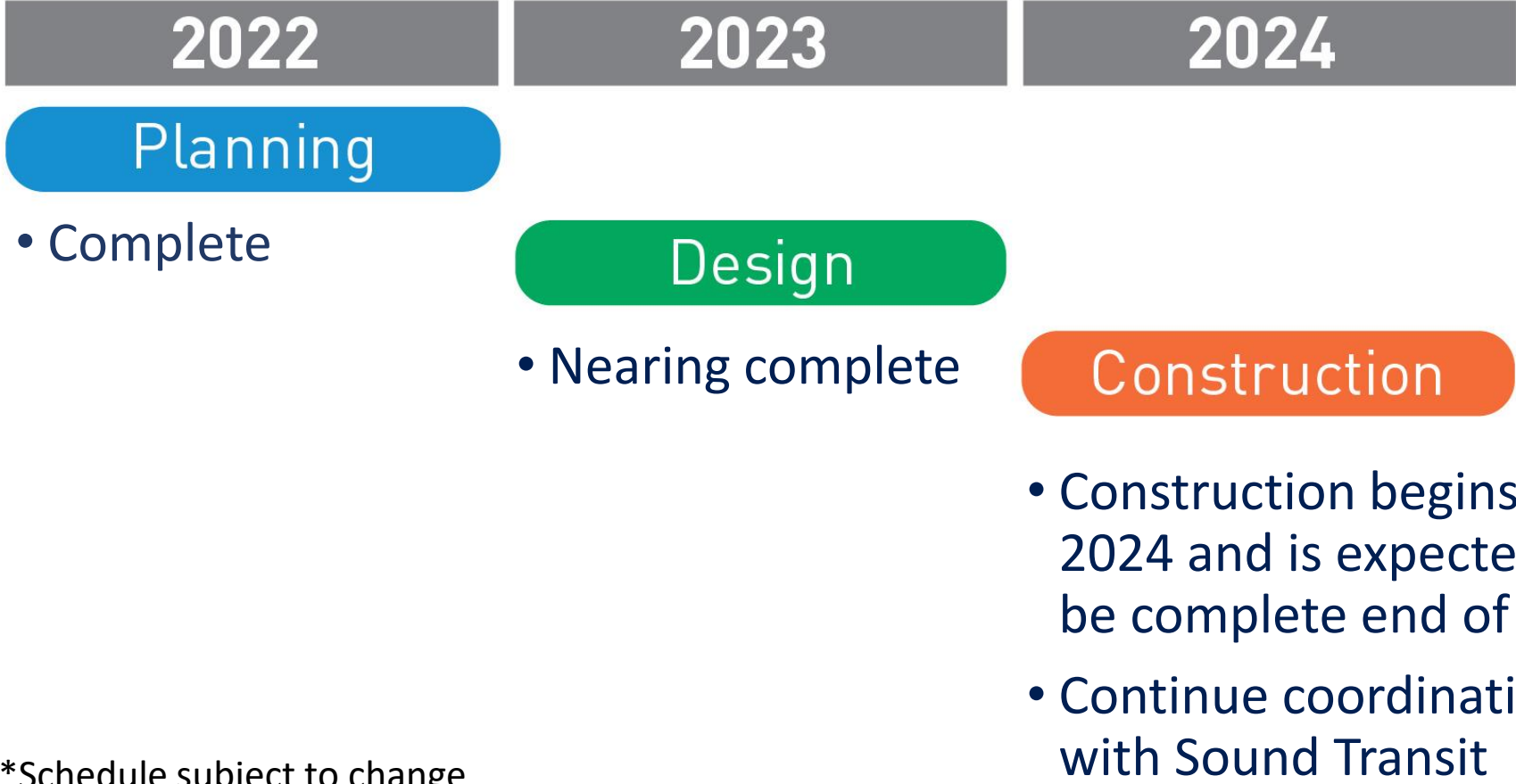


# Project coordination

- Design, utility relocation and construction coordination with Sound Transit
- SODO Station access



# Schedule & Next Steps



\*Schedule subject to change



# Ongoing public engagement

- Continue to meet and discuss designs with property and business representatives along the route
- Present to the SDOT modal advisory boards, and community groups upon request
- Provide regular project updates on webpage and through listserv
- Continue engagement and coordination with SODO BIA



# Questions?

## Stay in touch:



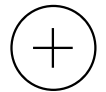
[GeorgetownToDowntownSafety@seattle.gov](mailto:GeorgetownToDowntownSafety@seattle.gov)



206.900.8734



[www.seattle.gov/transportation/GeorgetownToDowntownSafety](http://www.seattle.gov/transportation/GeorgetownToDowntownSafety)



From the entire SDOT Team:

**Thank you!**

