



Levy Equity Workplan

Levy Oversight Committee

December 5, 2023

Margo Iñiguez Dawes, SDOT

Our Vision, Mission, Values, & Goals

Seattle is a thriving equitable community powered by dependable transportation. We're on a mission to deliver a transportation system that provides safe and affordable access to places and opportunities.

Core Values & Goals:

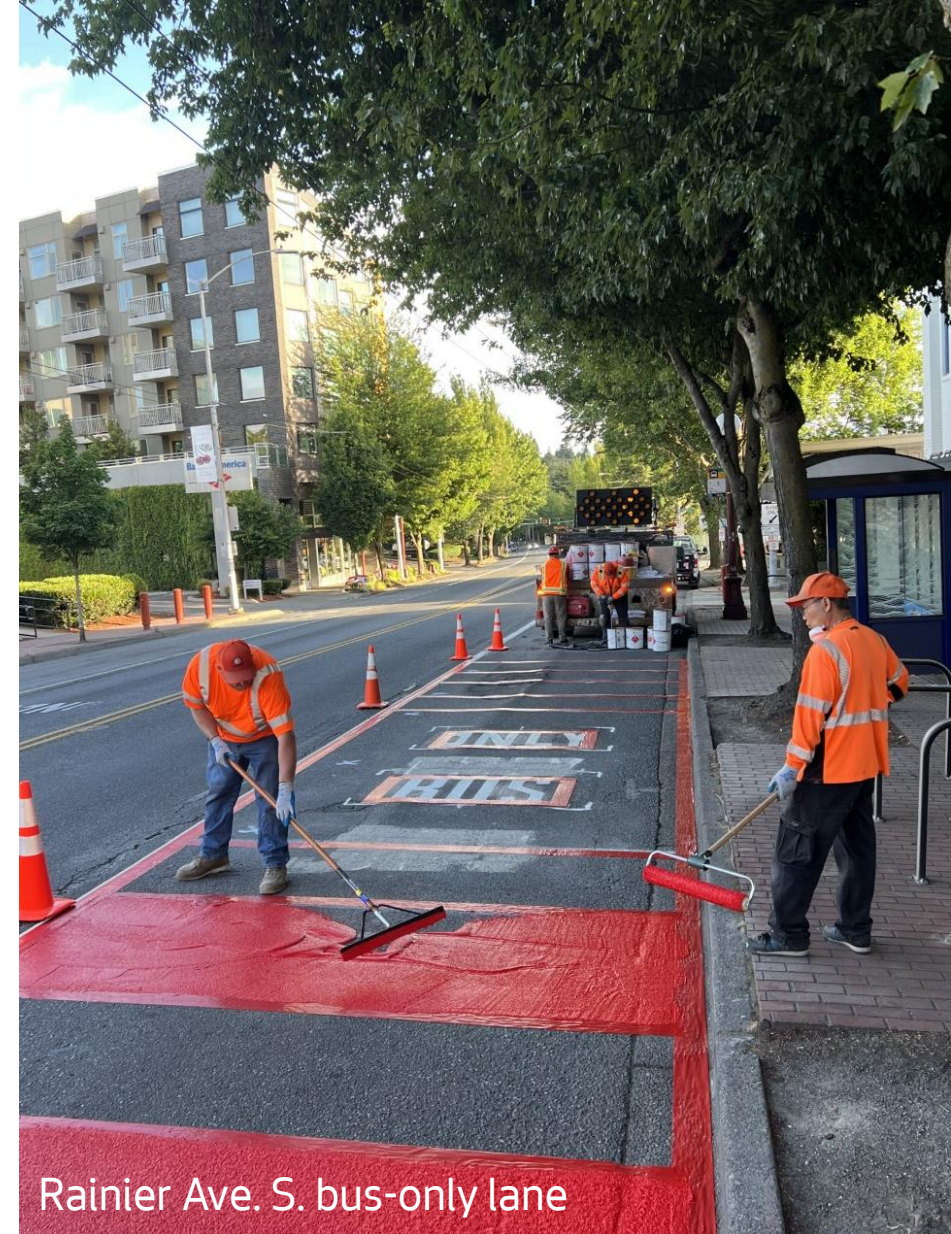
Equity, Safety, Mobility, Sustainability, Livability, and Excellence.

Purpose & Outline

Purpose: Share Levy Equity Workplan and initial outcomes with the Levy Oversight Committee and members of the Transportation Equity Workgroup

Outline:

- **Grounding:** Equity at SDOT and the Transportation Equity Framework (TEF)
- **Overview:** Levy Equity Workplan and initial outcomes



Key Takeaways

- Equity is everybody's work at SDOT, and the Transportation Equity Framework is our guiding document
- We have been incorporating equity into our decision-making for several years, and we've dedicated time and resources over the last year to standardizing and advancing how we do so - both currently and into the future
- We've mapped the distribution of deliverables this year with the Racial and Social Equity Index, providing a tool to inform any decisions remaining in the current levy and giving us insight into what is needed to continue strengthening the foundation of this work
- Geographic equity is one of many important inputs (alongside asset condition, safety impact, etc.) to our decisions about what work to prioritize



Aurora Ave. sidewalk construction

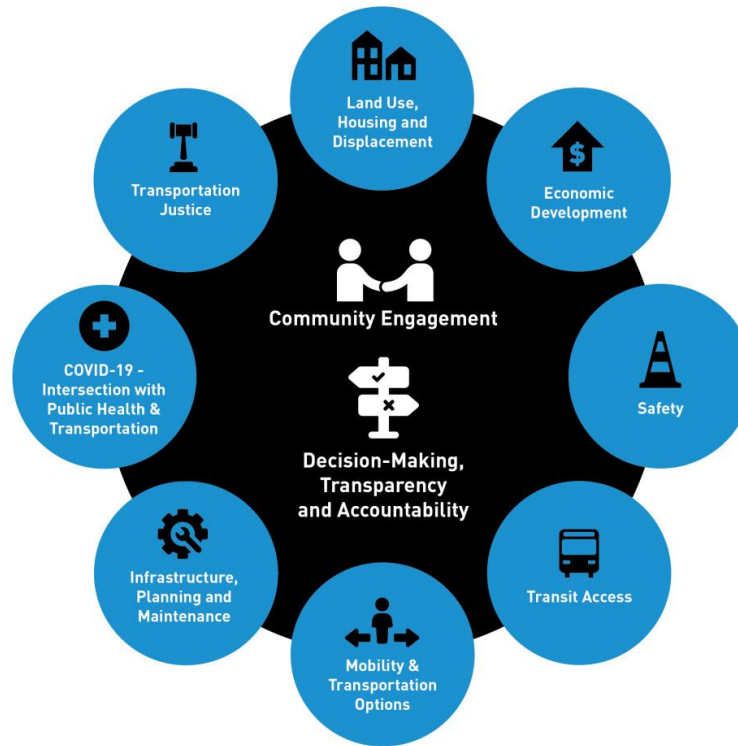
Equity at SDOT

Office of Equity and Economic Inclusion Organizational Structure

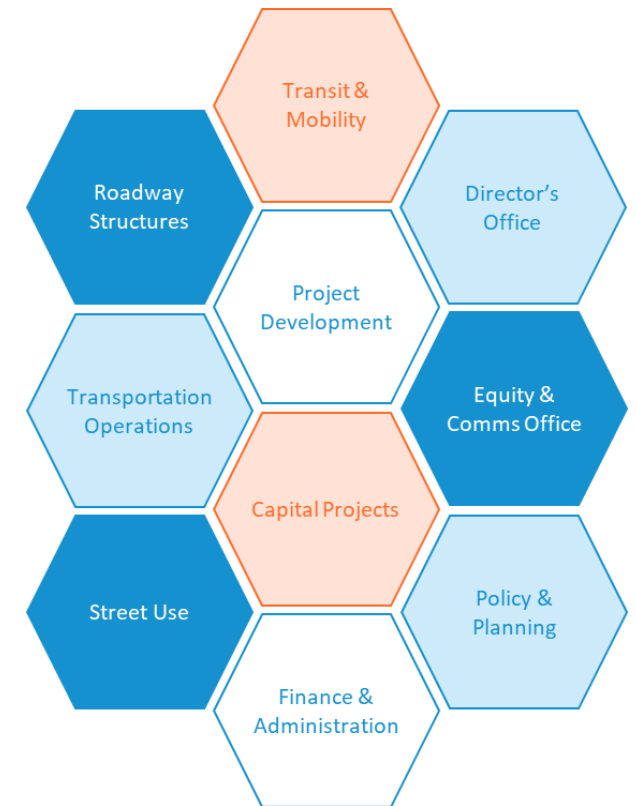


Leadership & strategic direction

TRANSPORTATION EQUITY FRAMEWORK



Guiding document



Divisions implementing the TEF

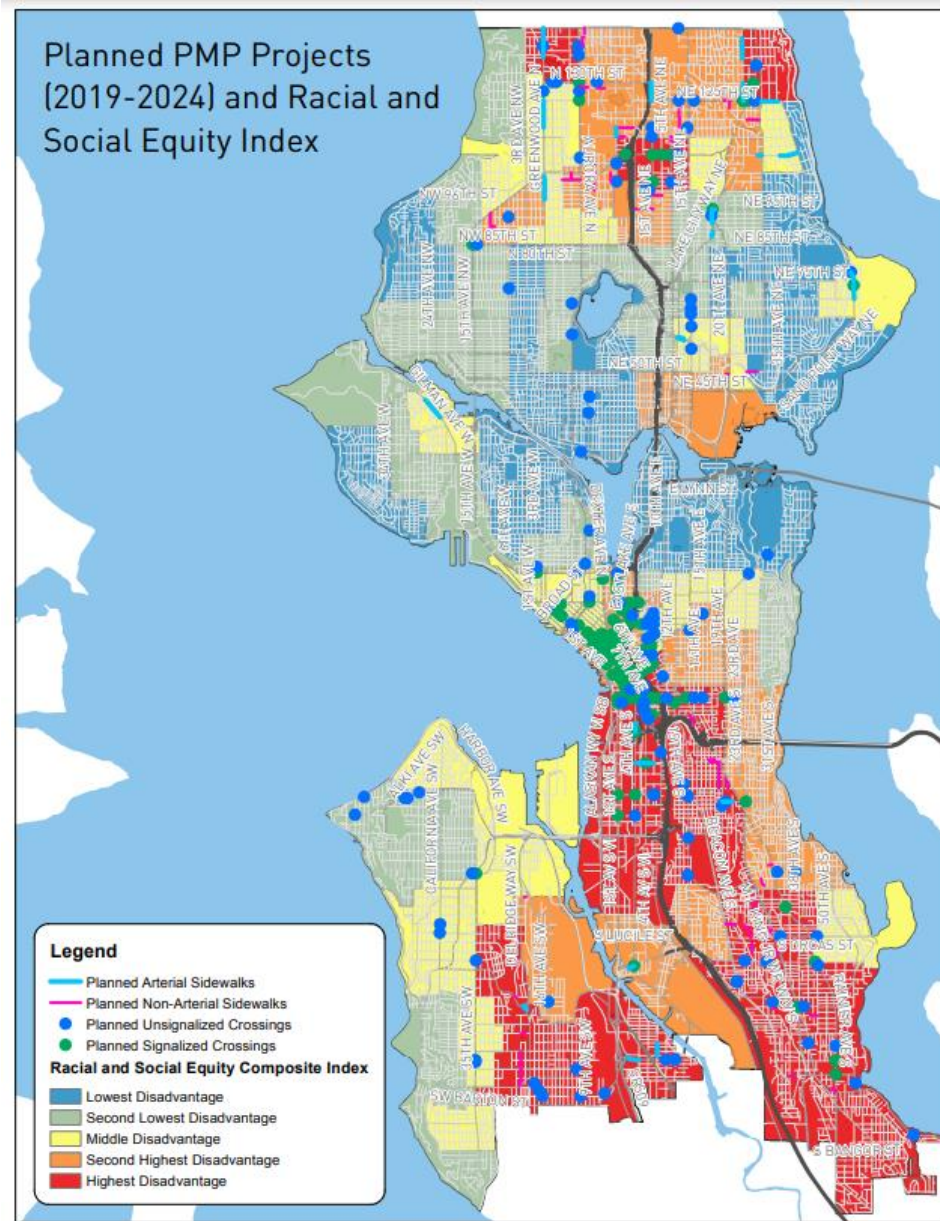
Key Takeaway: Equity is everybody's work at SDOT.

Levy Equity Workplan

Goal: Improve the equitable distribution of Levy deliverables

Intent:

- Centralize and standardize existing equitable practices, improve our understanding of our distribution of investments
- Influence any remaining work plan decisions between now and the end of the Levy
- Strengthen the foundation of equity for future prioritization and decision-making (e.g., for next funding package)



What kind of equity are we talking about?

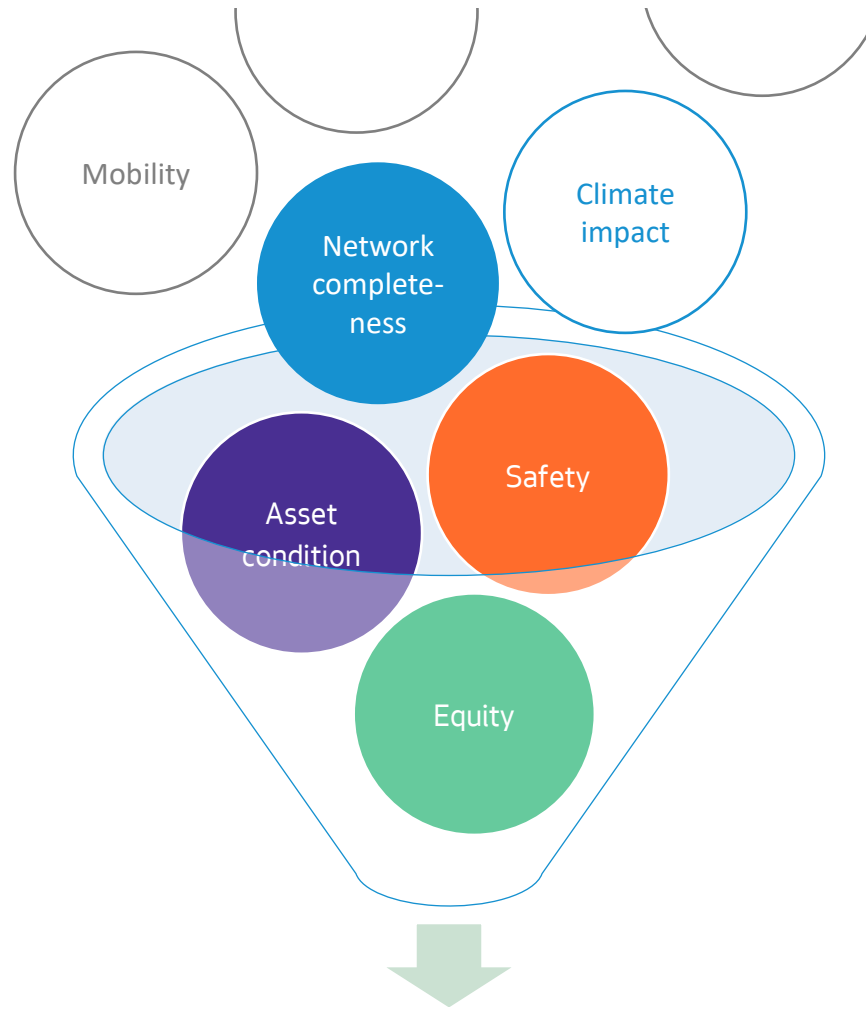
Many types of equity in infrastructure context:

- **Geographic distribution of investments** (e.g., ensuring improvements are prioritized in areas of greatest need/historical disinvestment, not just equal distribution)
- **Contracting equity** (e.g., WMBE utilization goal)
- **Workforce equity** (e.g., Priority Hire)
- **Community engagement** (e.g., in project selection, design, and construction)
- **Construction impacts and mitigations** (e.g., strategies to ensure impacts don't disproportionately impact disinvested communities)

} Focus of this project

} **Not** the focus of this project

Equity is one of many inputs



Prioritization Frameworks

Transportation Equity Framework (TEF) tactics we're implementing through the Levy Equity Workplan

- Develop SDOT work plans that **equitably allocate resources for capital projects and maintenance efforts** in communities hit hardest by COVID.
([8.2](#) - COVID-19 Intersection with Public Health & Transportation)
- **Focus maintenance resources in communities and neighborhoods currently underserved by government** that have significant maintenance needs; use findings from the racial equity assessment.
([19.4](#) - Infrastructure, Planning, and Maintenance)
- **Add equity-related data layers into all SDOT-produced web maps** and ensure that staff are trained and use this as part of their research, decision-making, project outline, etc.
([20.2](#) - Infrastructure, Planning, and Maintenance)

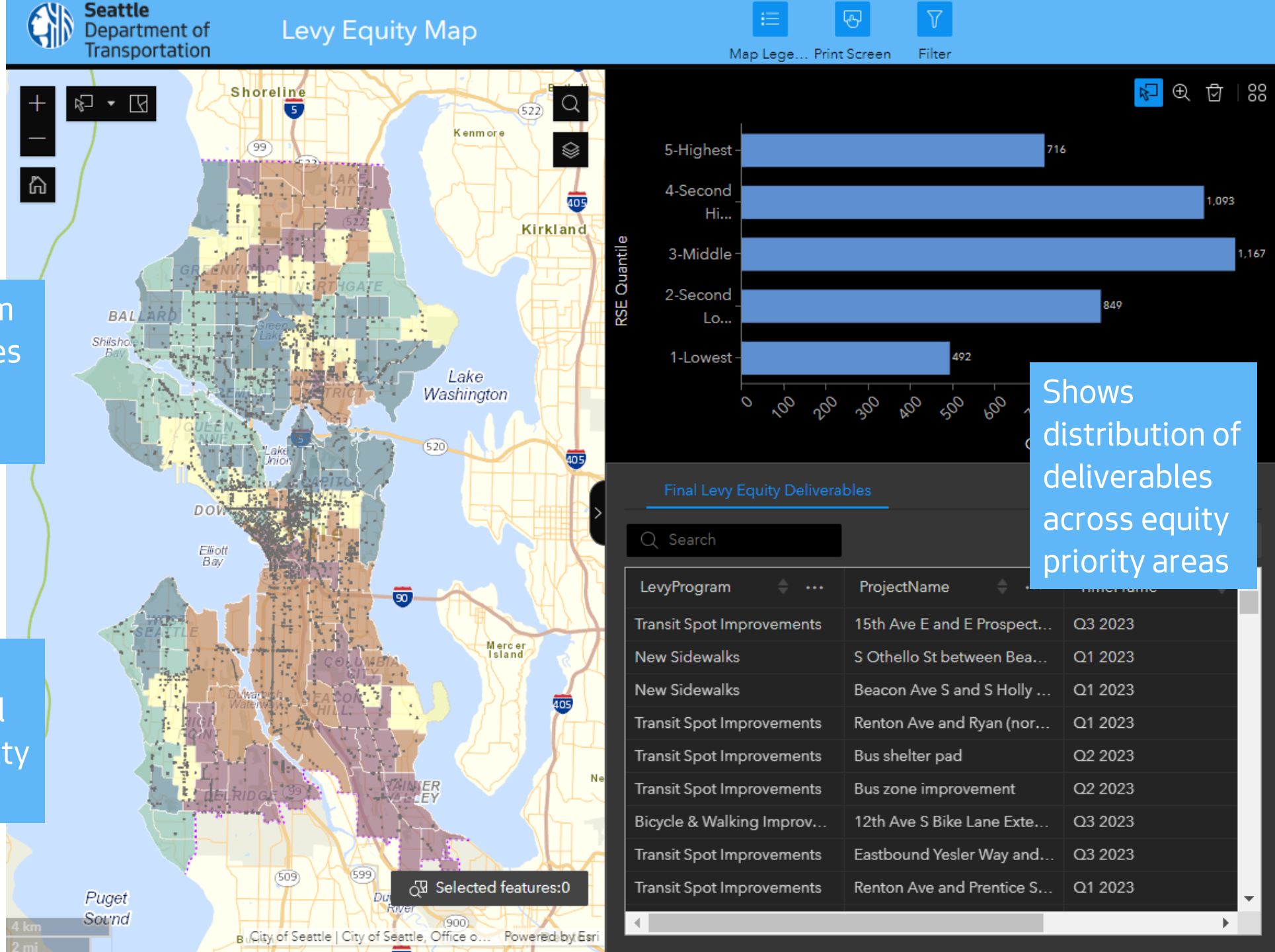
Spotlight

Levy Equity Map

PRELIMINARY

All program deliverables mapped in one place

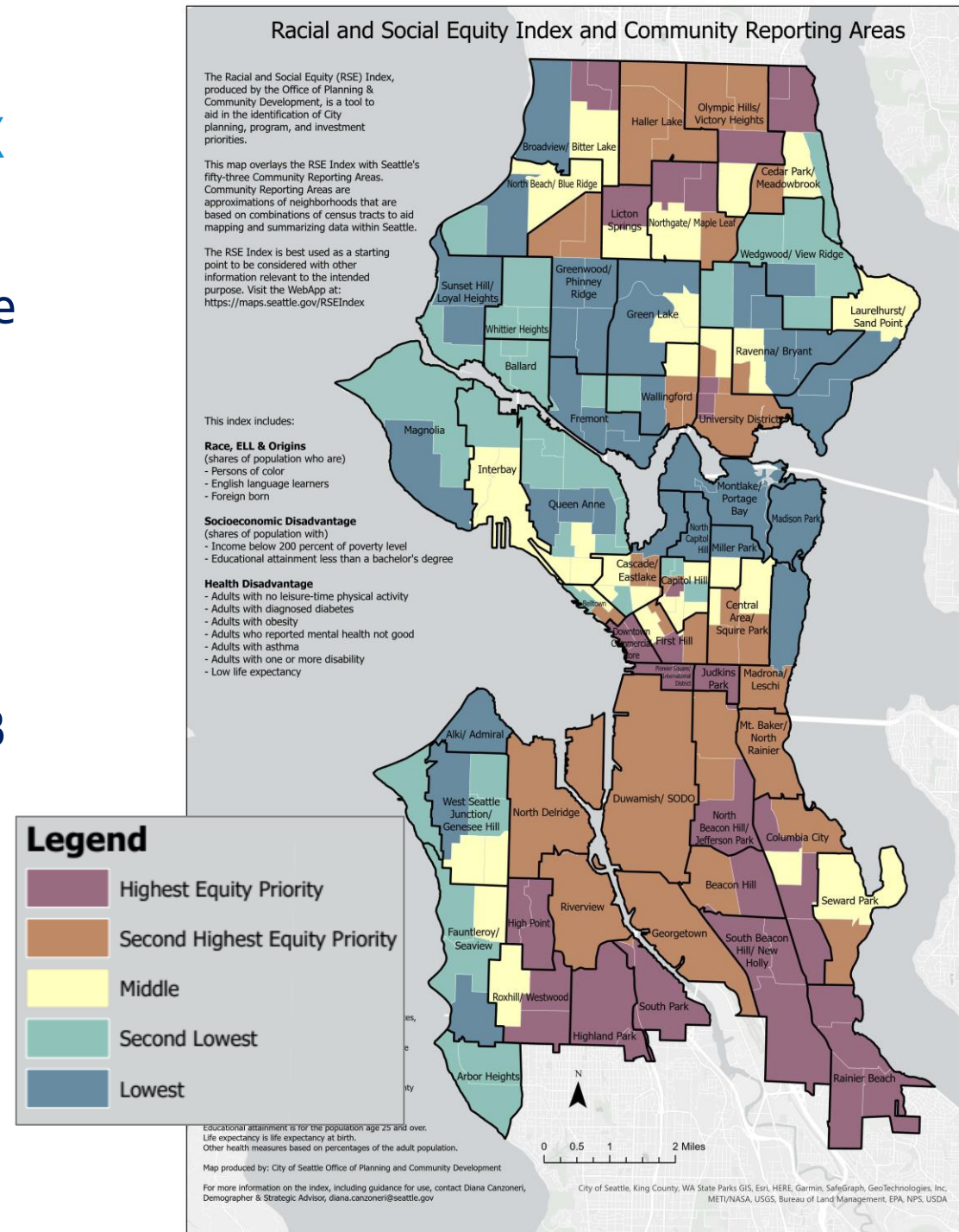
Overlaid with Seattle's Racial and Social Equity (RSE) Index



Shows distribution of deliverables across equity priority areas

Racial & Social Equity (RSE) Index

- Identifies **high equity priority areas** based on census tracts where disadvantaged/priority populations make up a relatively large share of residents
- Used by City of Seattle Departments as a **tool for informing design and prioritization** of programs and investments
- First developed in 2017, updated periodically (every ~3 years), most recent **update released in 2023**
- Composite index:
 - Race, Origins, and English Language Learners
 - Socioeconomic Disadvantage
 - Health Disadvantage



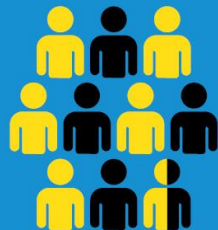
Using the RSE Index

The census tracts in the top two quintiles of the Racial & Social Equity Index (highest and second-highest equity priority areas) account for **40%** of Seattle's population, but:



50%

of the citywide population of adults with one or more disability



55%

of the citywide population of people of color



58%

of the citywide total households under 200% of the Federal Poverty Level



62%

of the citywide foreign-born population

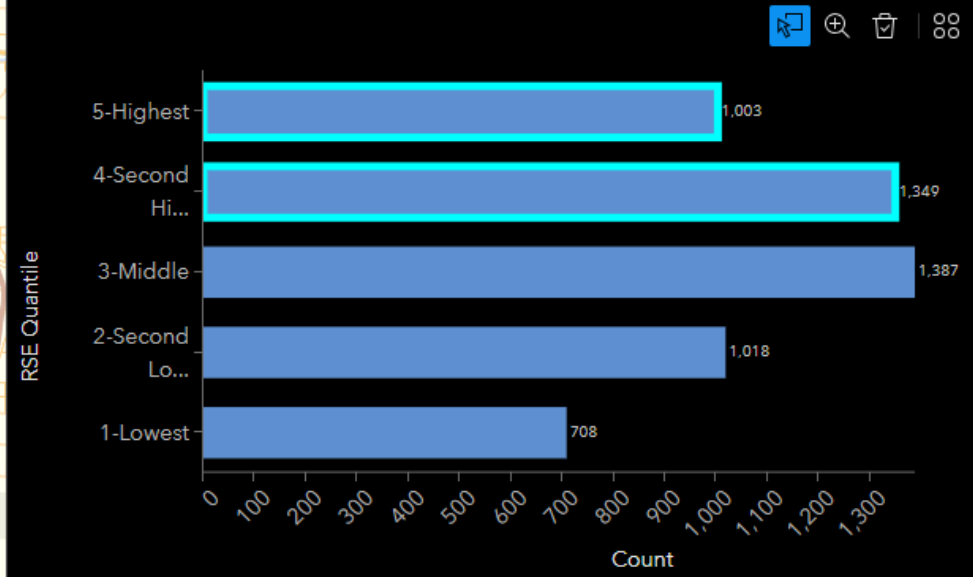
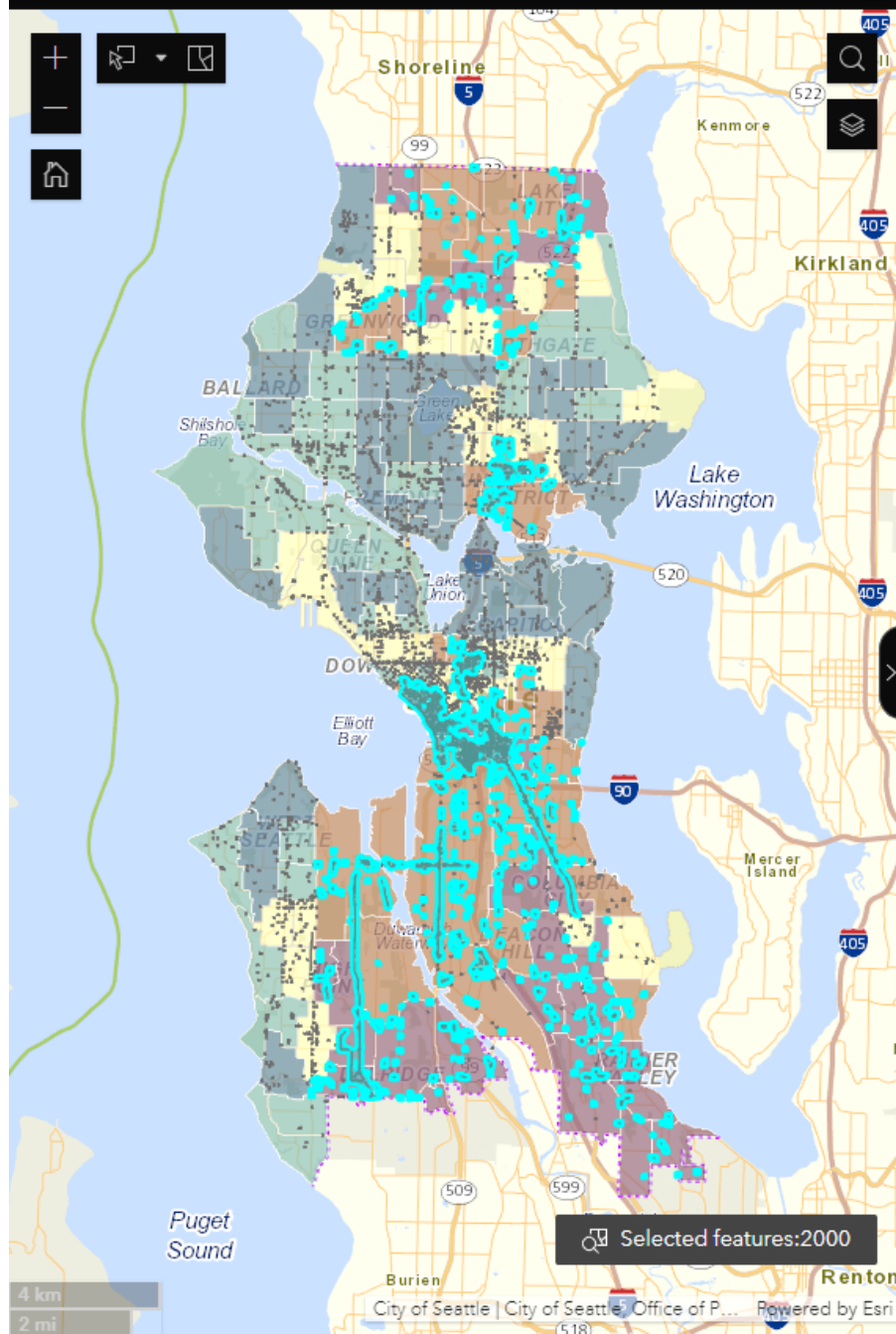


77%

of the citywide population of English Language Learners

Key Takeaways:

- We now know how many deliverables in the past year occurred in the highest and second-highest equity priority areas
- This data can inform our distribution of deliverables in the future (alongside other key inputs)

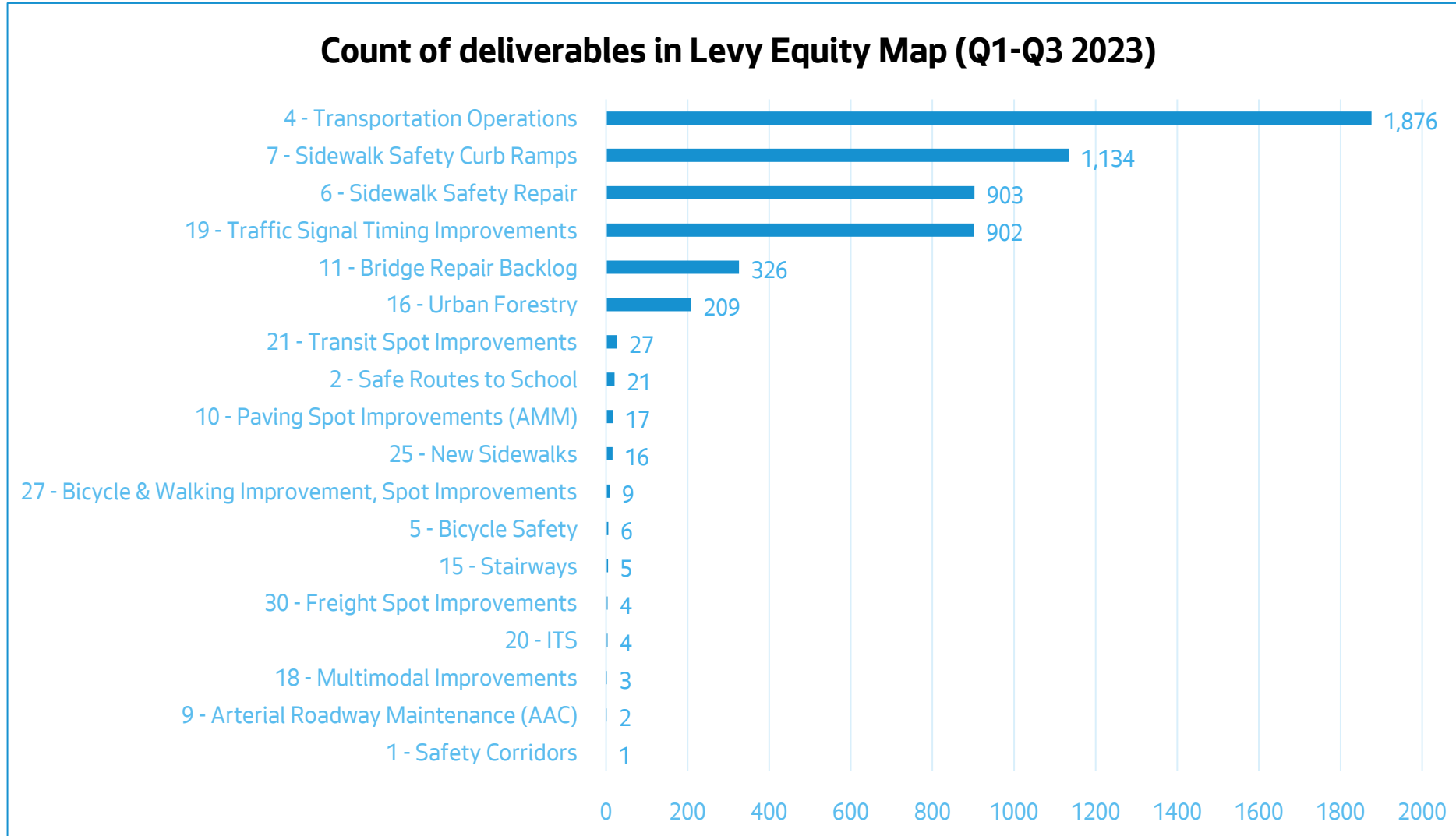


Final Levy Equity Deliverables

LevyProgram	ProjectName	TimeFrame
Safety Corridors	1st Ave S	Q3 2023
Safe Routes to School	Ingraham High School	Q1 2023
Safe Routes to School	Stevens Elementary School	Q1 2023
Safe Routes to School	View Ridge Elementary	Q2 2023
Safe Routes to School	Wing Luke Elementary	Q2 2023
Safe Routes to School	Rainier Beach High School	Q2 2023
Safe Routes to School	John Muir Elementary School	Q2 2023
Safe Routes to School	West Woodland Elementary	Q3 2023
Safe Routes to School	TOPS K-8	Q3 2023
Safe Routes to School	Seattle German American School	Q3 2023

1
3

Limitations to counting individual deliverables

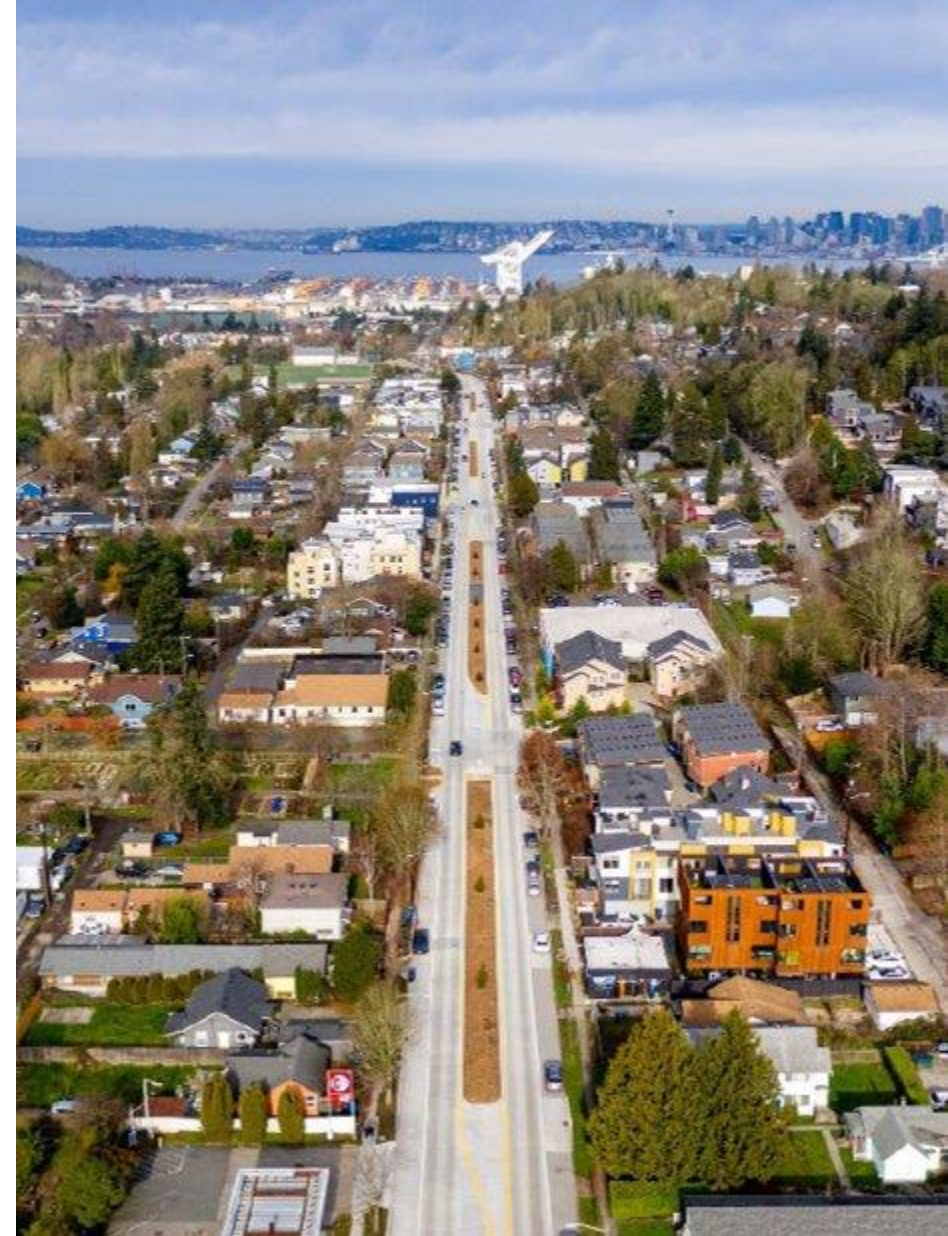


} Distribution dominated by high-volume programs

Continuous improvement

Next steps:

- Start adding financial data so we can understand the distribution of our spending (not just individual projects)
- Expand use of RSE Index in prioritization for programs with deliverables distributed across the city
- Start defining what an “equitable distribution” of investments looks like, so we know when we are on track for success
- Work with other City departments to research displacement mitigation strategies that could accompany future investments



Levy-funded corridor improvements for Delridge RapidRide H

Questions?

Margo Iñiguez Dawes

Levy Equity Coordinator

margo.iniguez-dawes@seattle.gov

425-282-7772