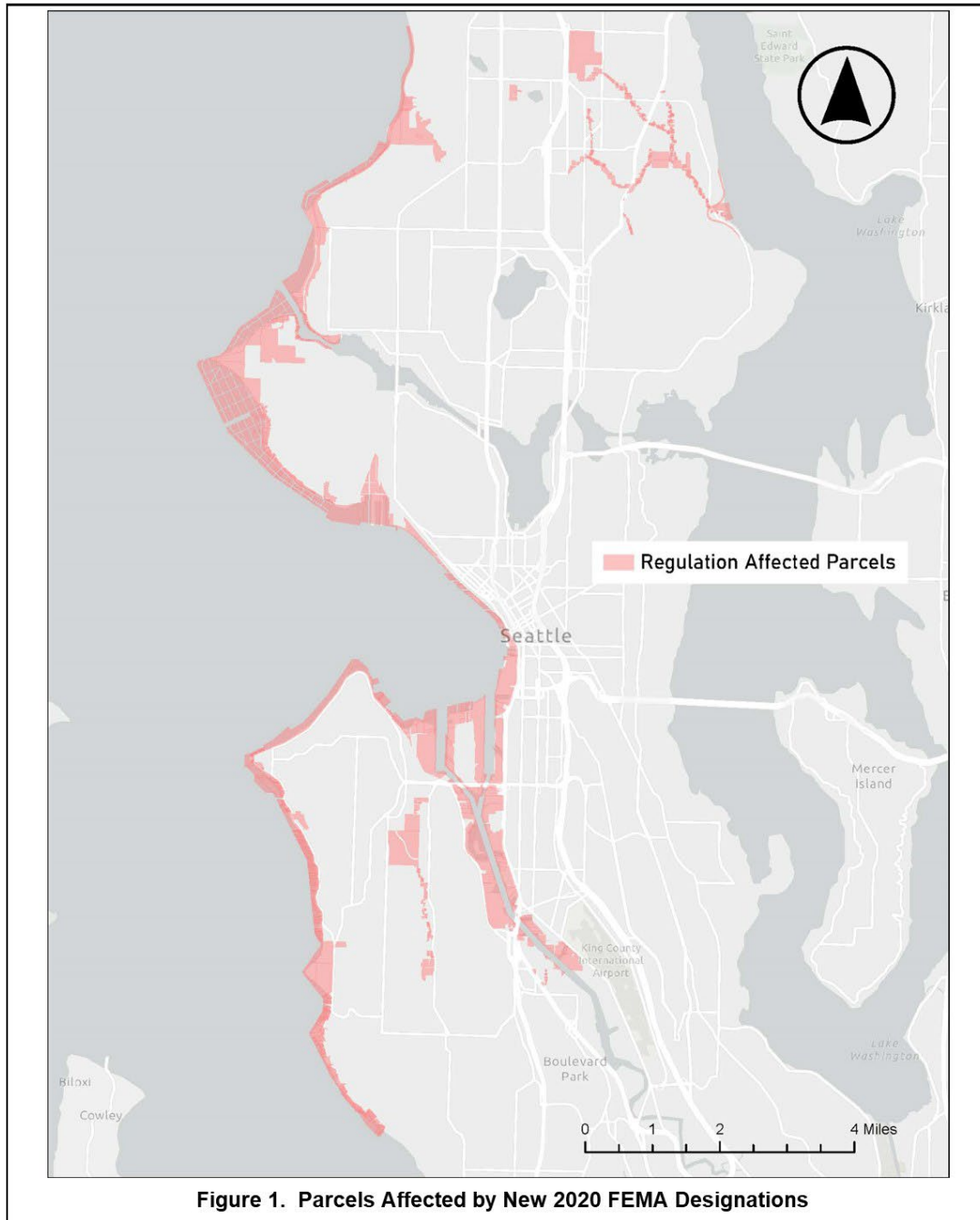
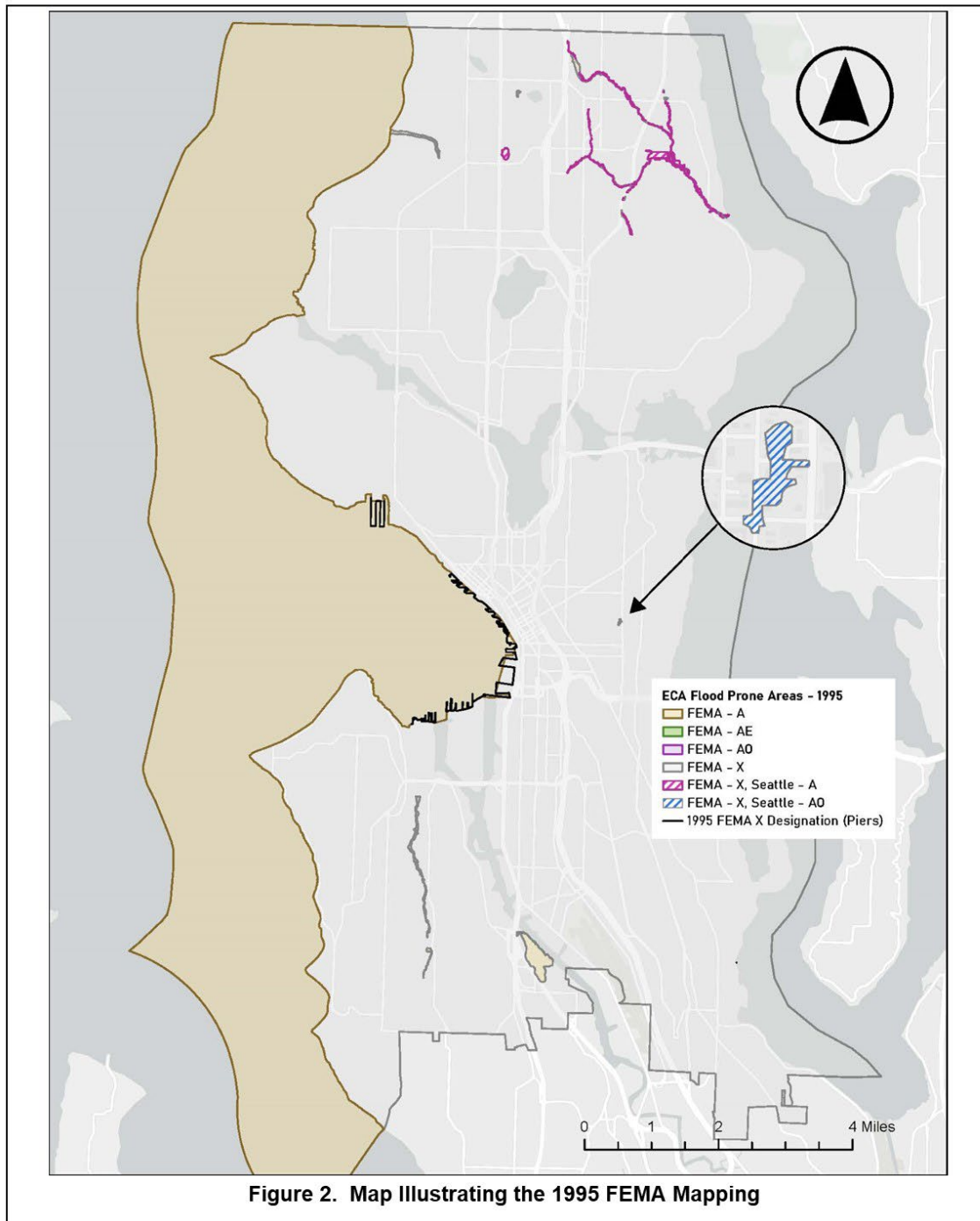


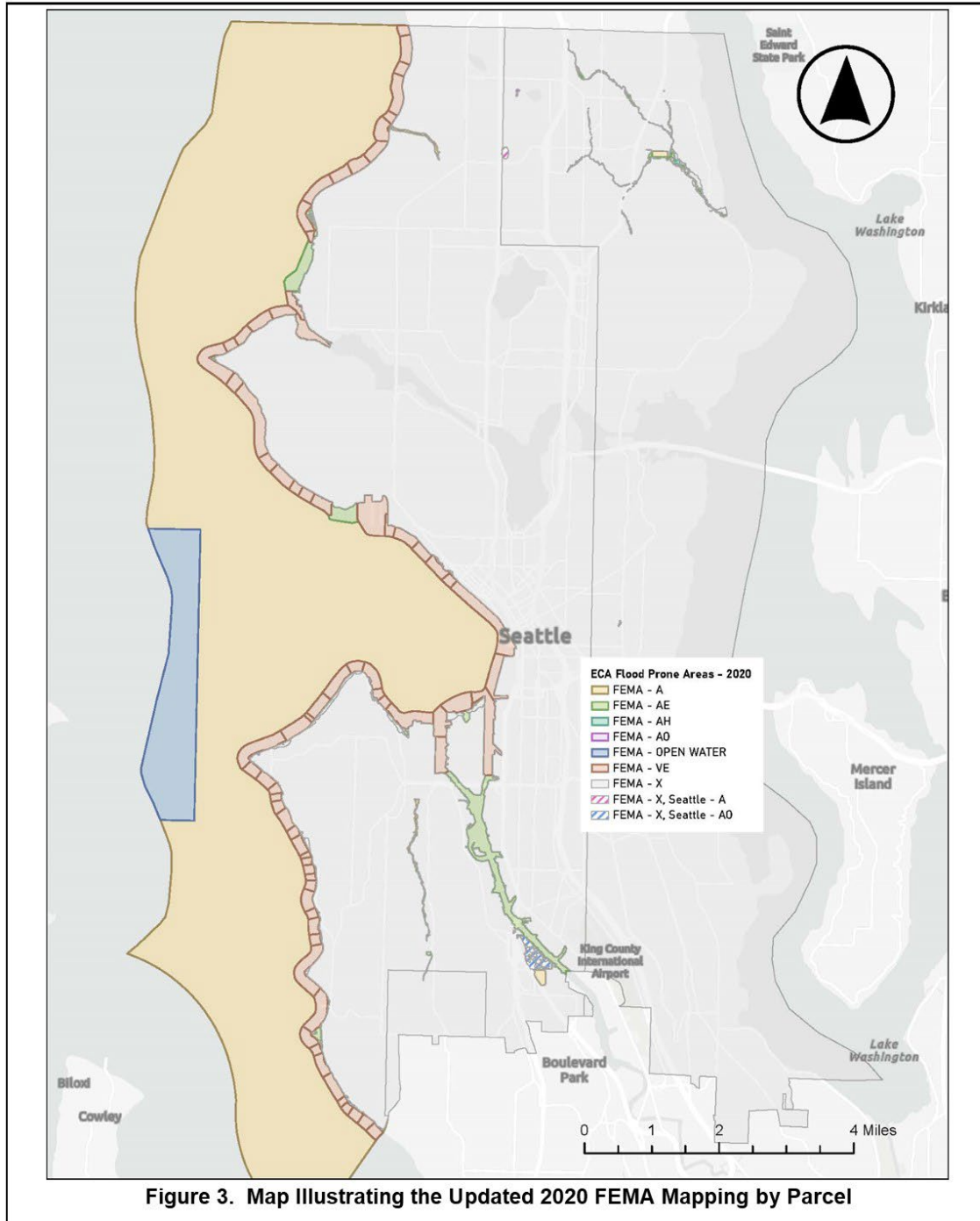
Exhibit 2. Floodplain and Flood-prone Area Maps



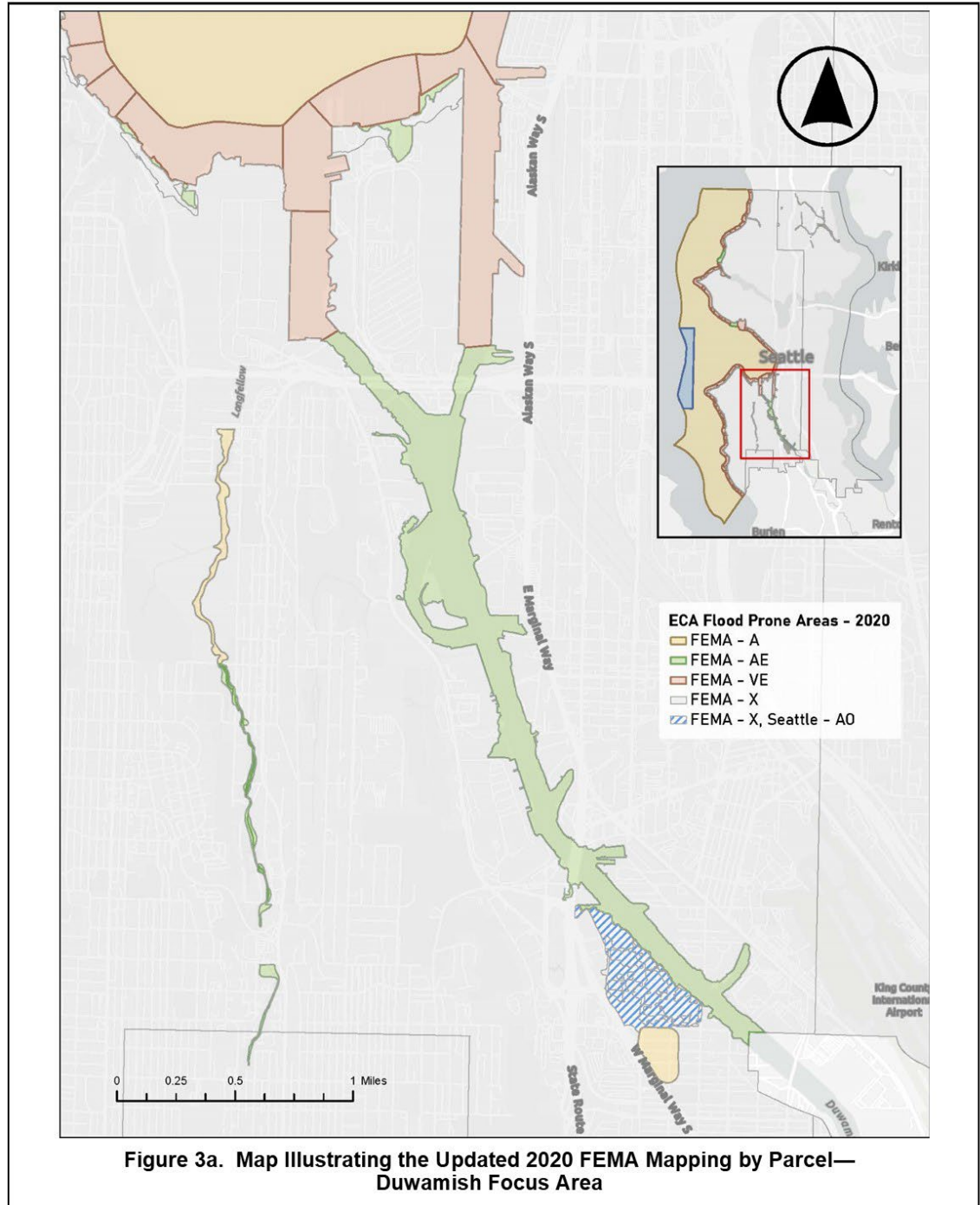
Source: City of Seattle, 2024.



Source: City of Seattle, 2024.



Source: City of Seattle, 2024.



Source: City of Seattle, 2024.

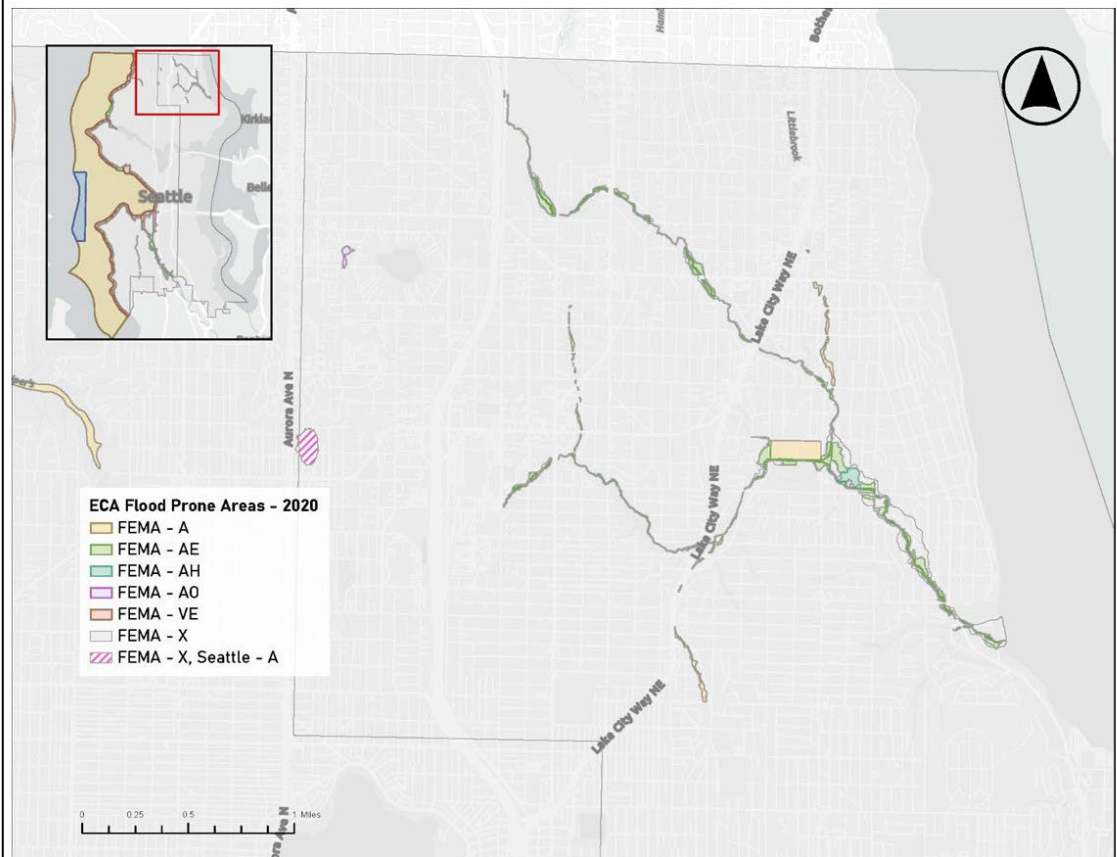


Figure 3b. Map Illustrating the Updated 2020 FEMA Mapping by Parcel— Thornton Creek Area

Source: City of Seattle, 2024.

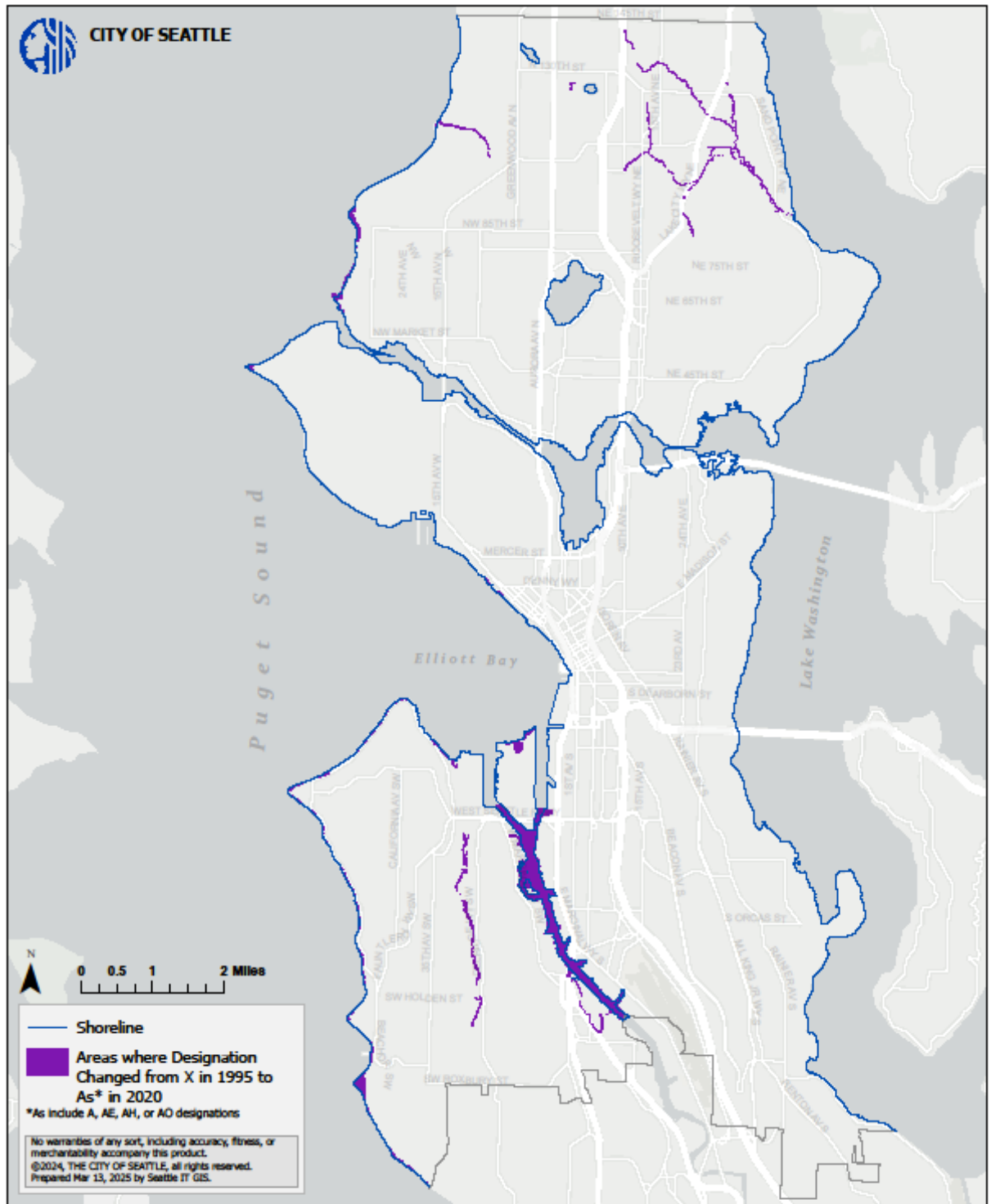
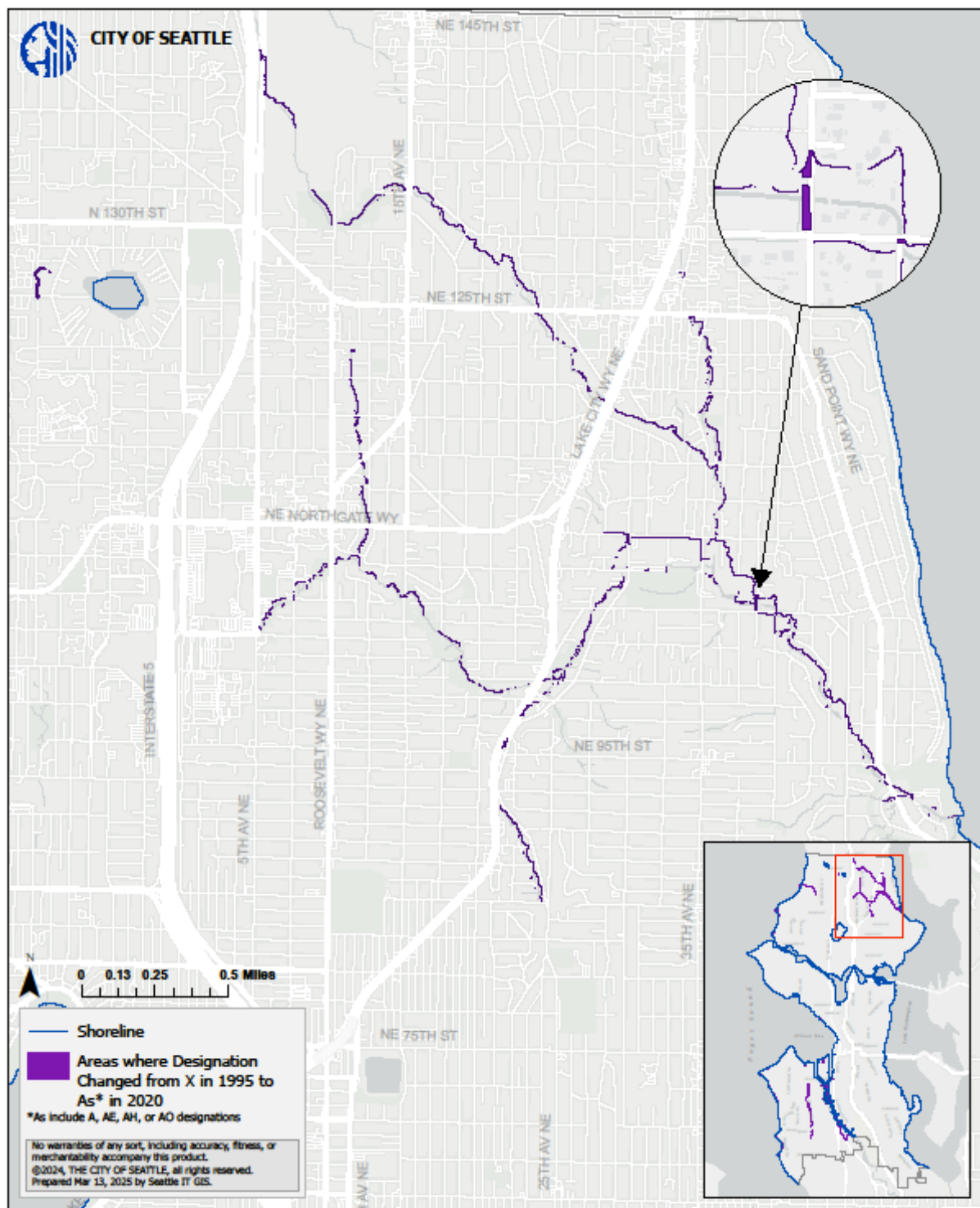


Figure 4. Map Illustrating the Updated 2020 FEMA Mapping – Zones X to As*



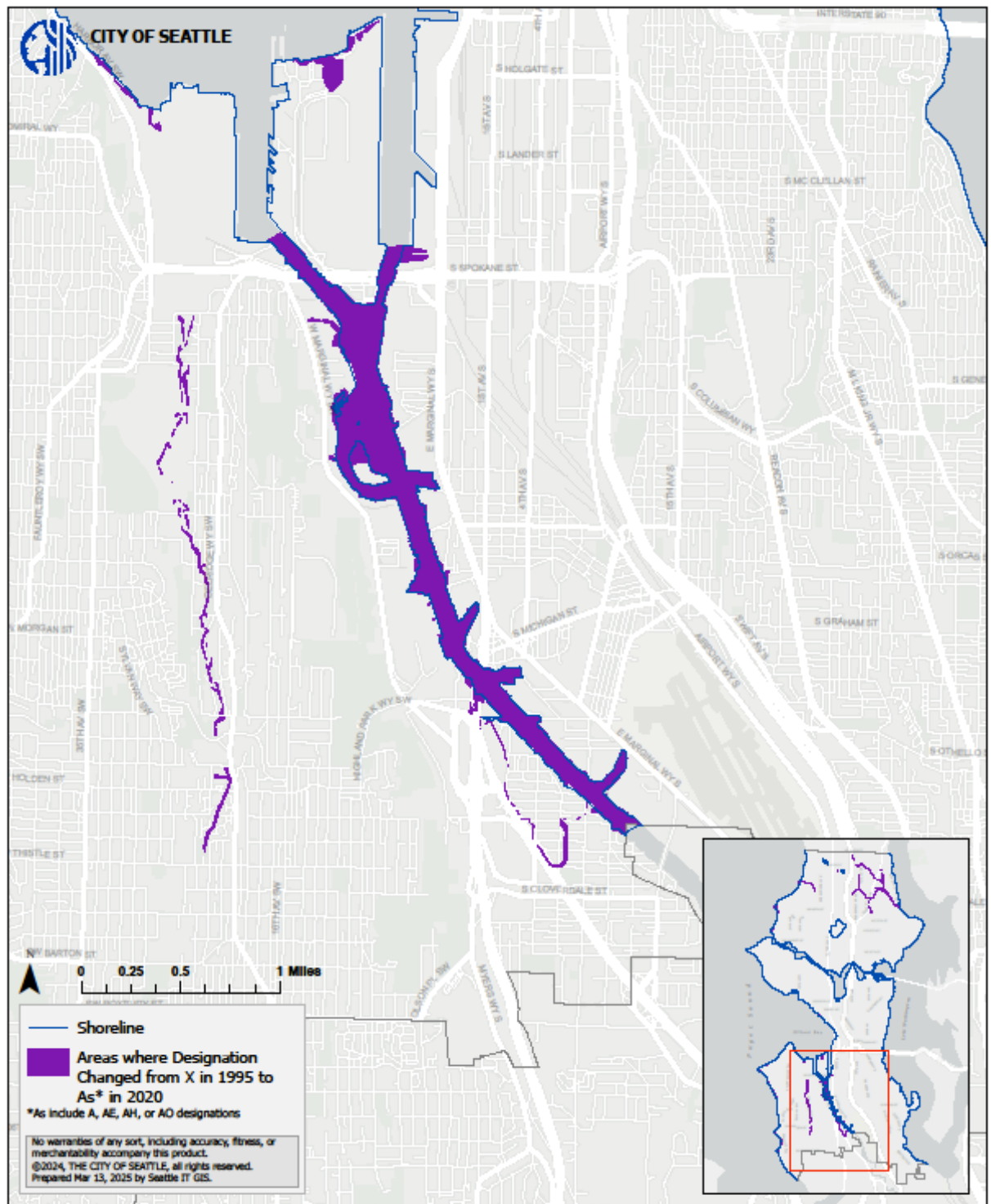


Figure 4b. Map Illustrating the Updated 2020 FEMA Mapping – Zones X to As*
Duwamish Focus Area

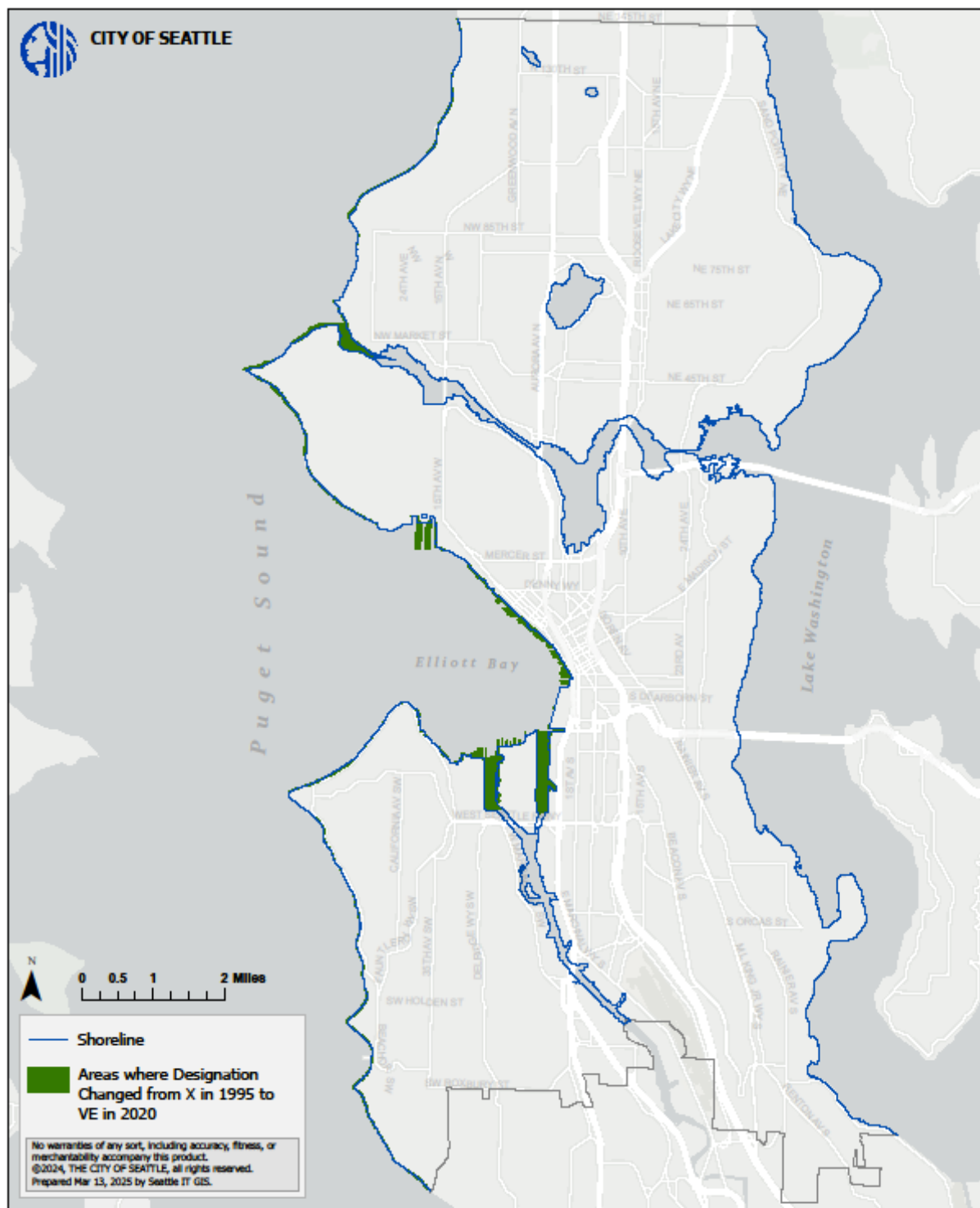
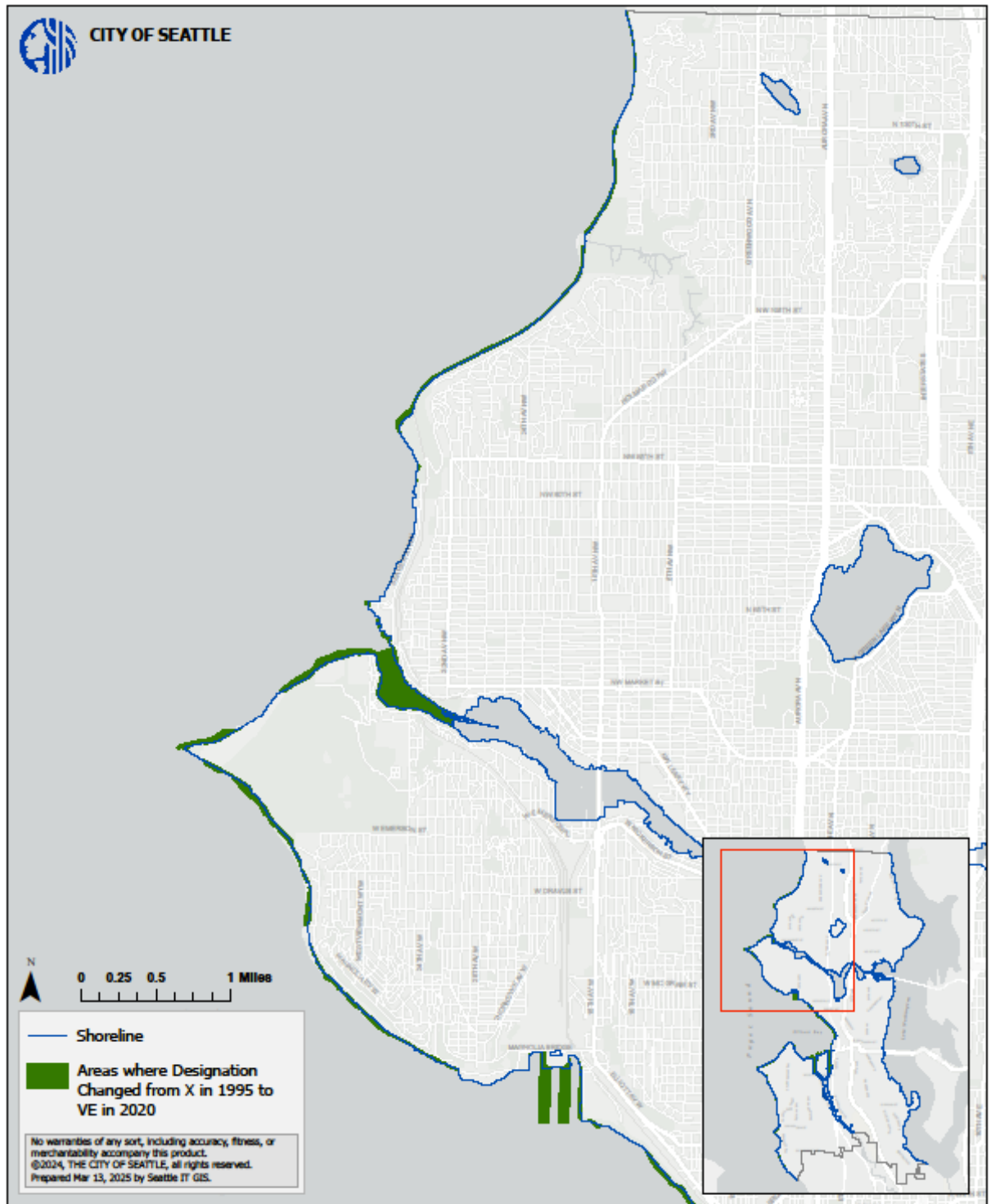


Figure 5. Map Illustrating the Updated 2020 FEMA Mapping – Zones X to VE



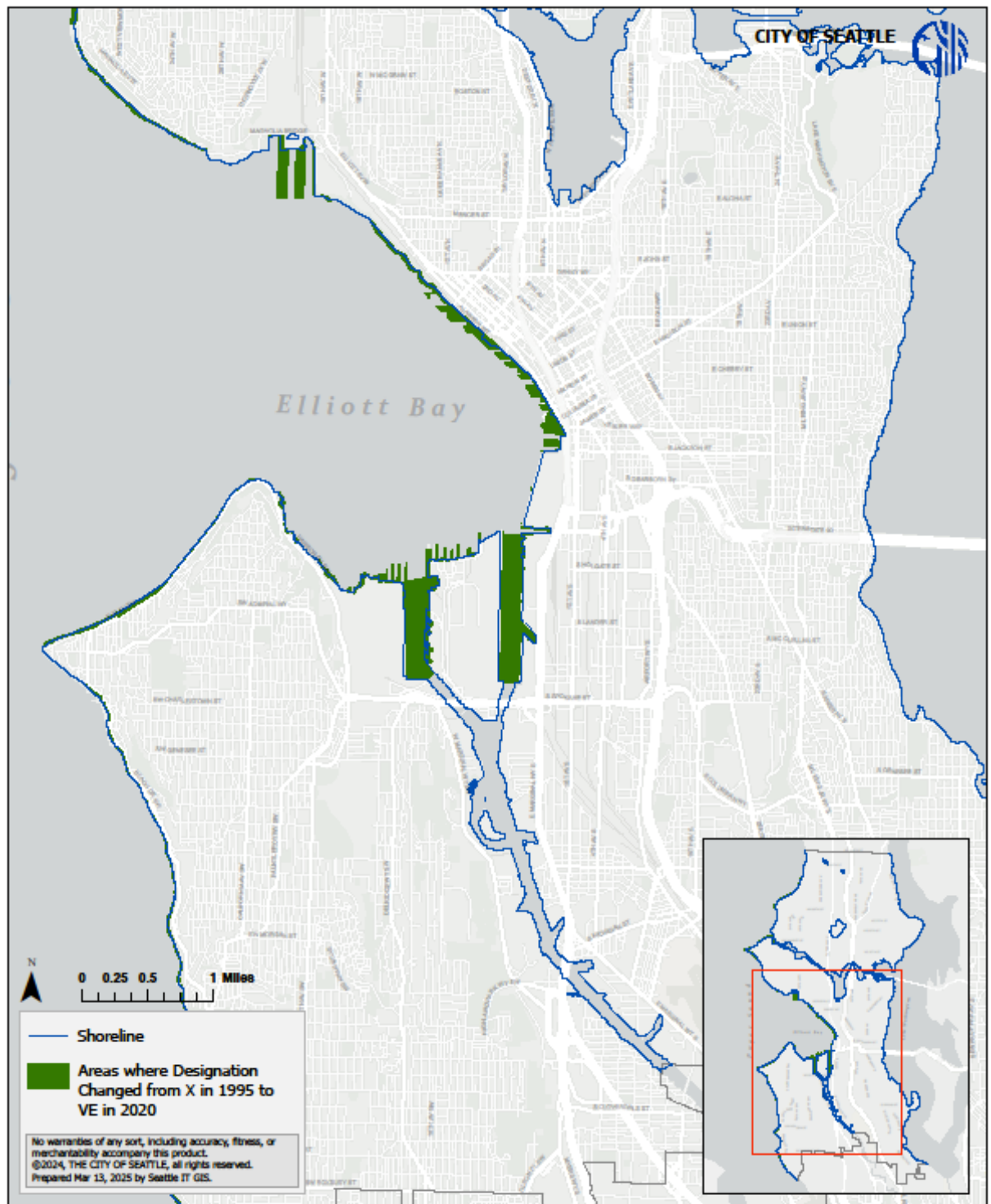


Figure 5b. Map Illustrating the Updated 2020 FEMA Mapping – Zones X to VE
Elliott Bay and Duwamish Focus Areas

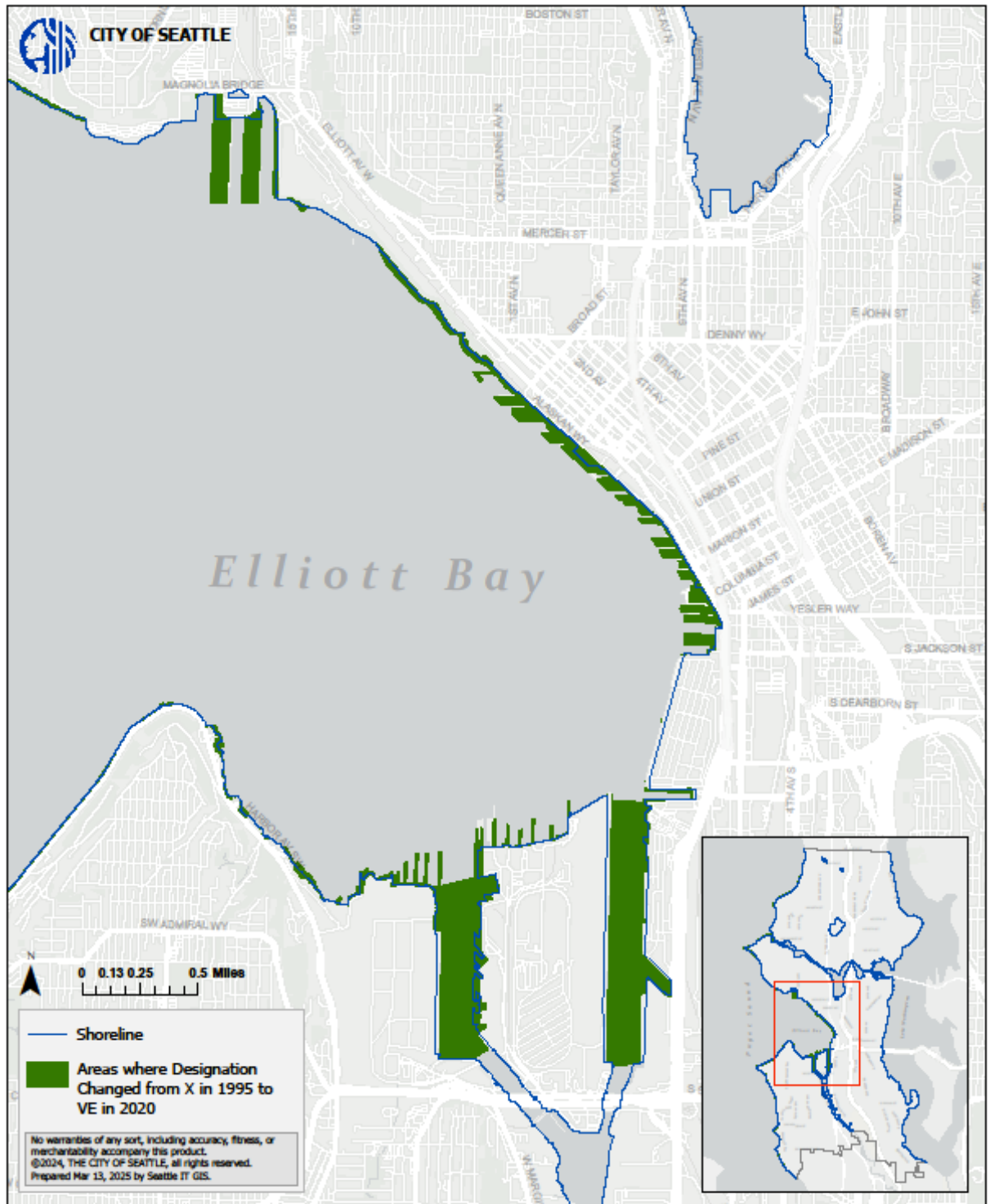


Figure 5c. Map Illustrating the Updated 2020 FEMA Mapping – Zones X to VE
 Elliott Bay Piers

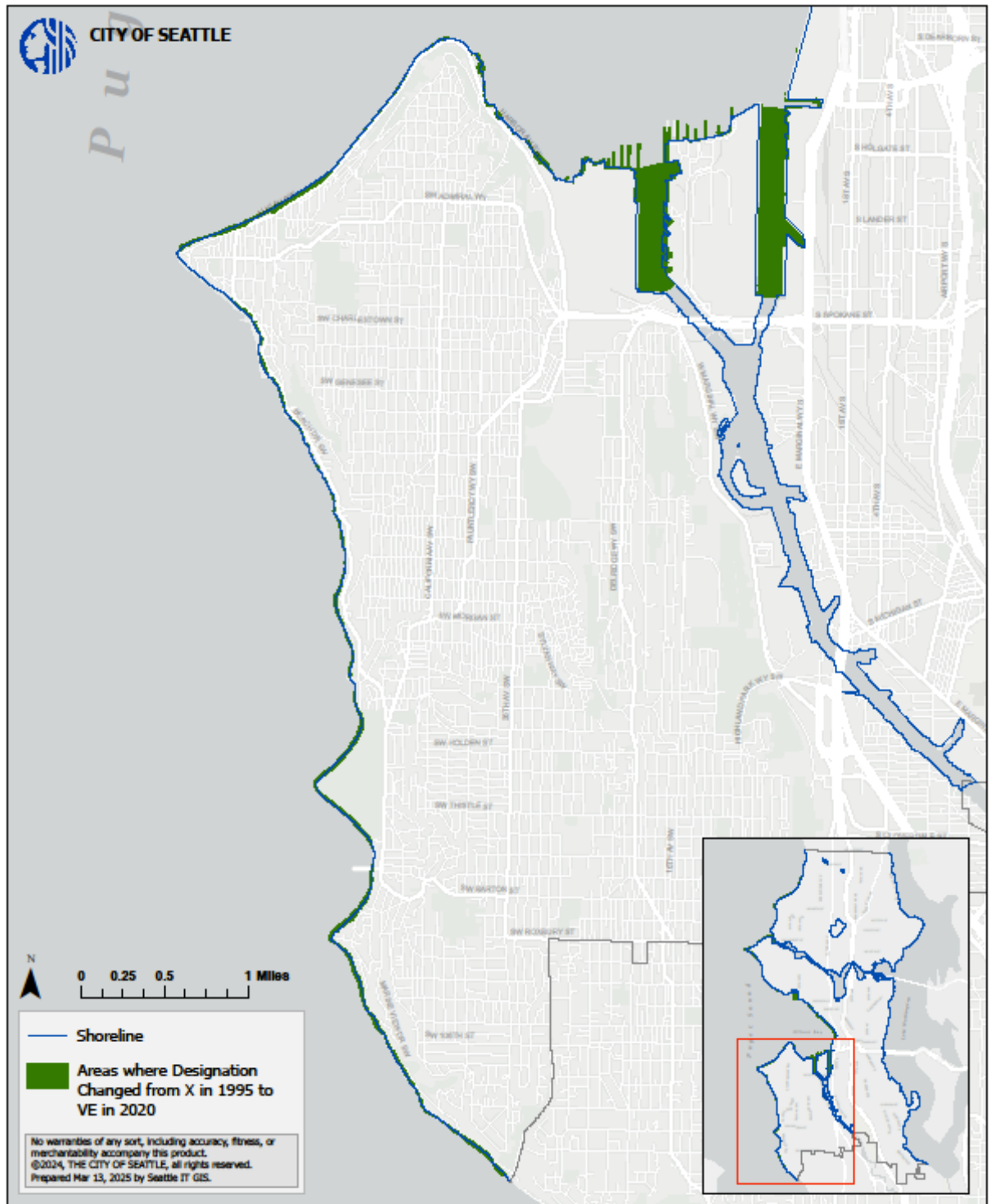


Figure 5d. Map Illustrating the Updated 2020 FEMA Mapping – Zones X to VE
West Seattle Focus Area

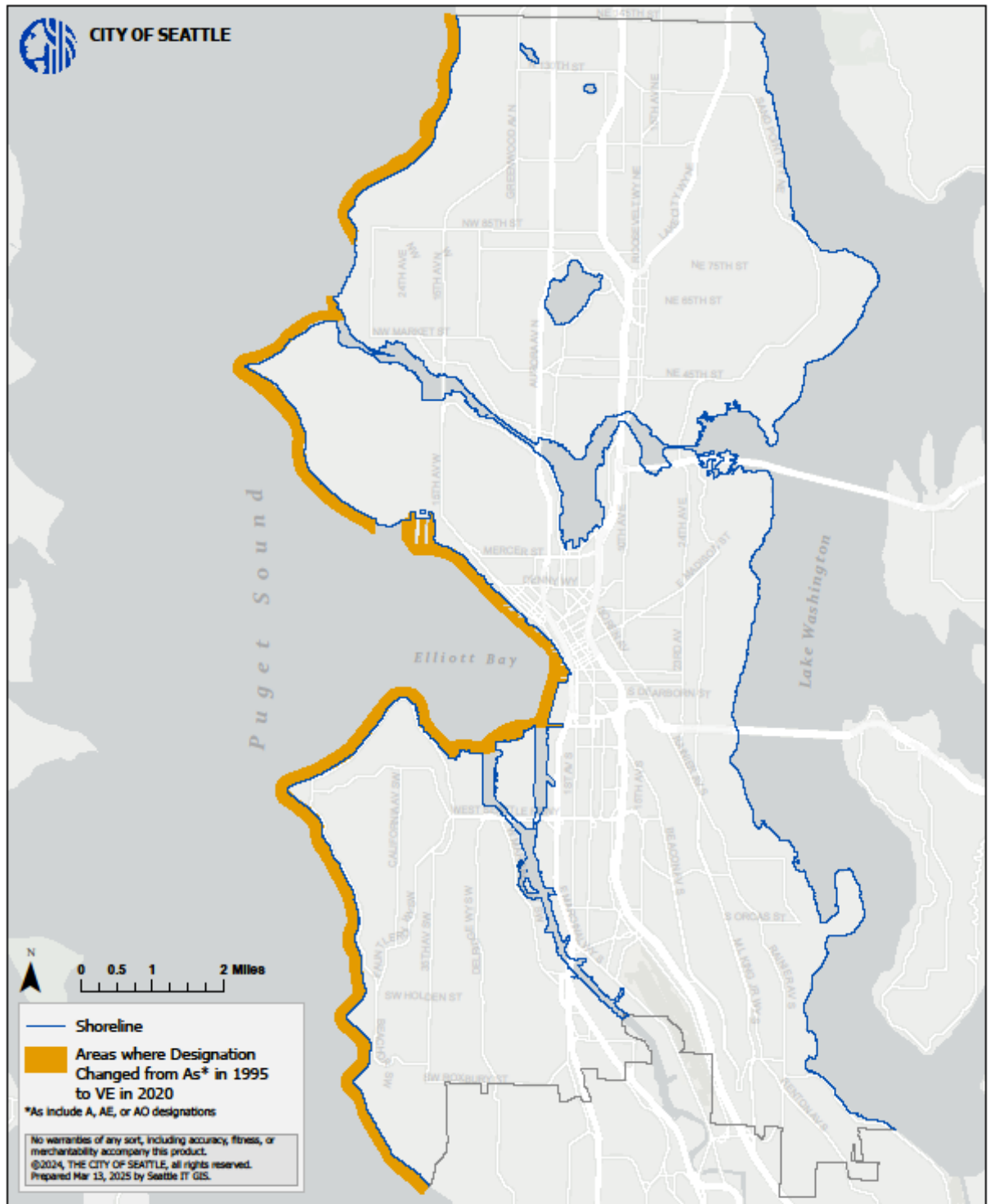


Figure 6. Map Illustrating the Updated 2020 FEMA Mapping – Zones As* to VE

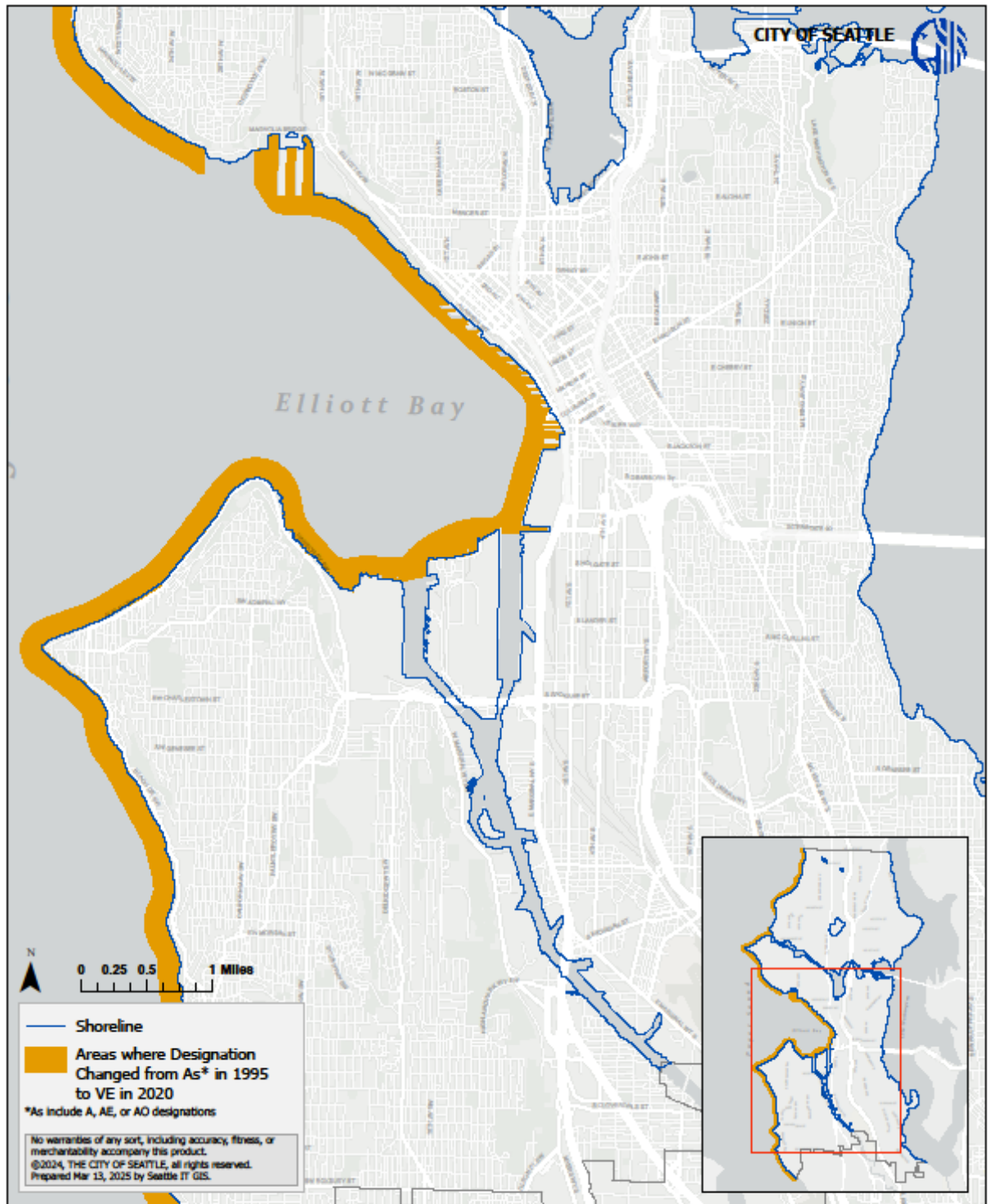


Figure 6a. Map Illustrating the Updated 2020 FEMA Mapping – Zones As* to VE Elliott Bay and Duwamish Focus Areas