

LANDSLIDE

DO'S & DON'TS



DO



MAINTAIN DRAINAGE SYSTEMS (PIPES, DITCHES, PUMPS, ETC.) ON YOUR PROPERTY AND KEEP STREET DRAINS FREE OF LEAVES AND DEBRIS

DIRECT STORMWATER DRAINAGE SYSTEMS AWAY FROM STEEP SLOPE AREAS

PERFORM PERIODIC INSPECTIONS OF PROPERTY BEFORE AND AFTER STORMS, KEEPING SAFETY AS THE #1 CONCERN



CHECK RETAINING WALL DRAINAGE SYSTEMS

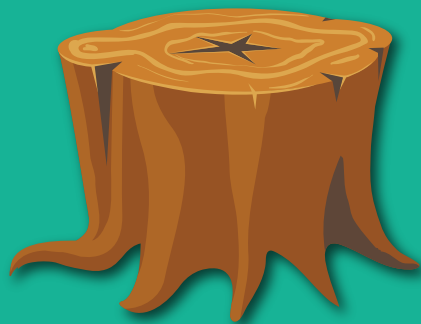


BE ALERT DURING AND FOLLOWING STORMS

IF YOU HAVE AN IRRIGATION SYSTEM, SHUT IT OFF AND CHECK IT OUT SEASONALLY

KEEP FILL AND YARD WASTE (INCLUDING LOGS) OFF SLOPES

LEAVE STUMPS AND ROOTS IN THE GROUND ON SLOPES



CALL A PROFESSIONAL IF YOU HAVE QUESTIONS OR A PROBLEM



DON'T

DON'T DIRECT STORM OR OTHER WATER ONTO A SLOPE

DON'T REMOVE VEGETATION ON A SLOPE WITHOUT A RE-VEGETATION PLAN



DON'T CUT INTO THE TOE (OR BOTTOM) OF A SLOPE

DON'T REMOVE TREE STUMPS FROM SLOPES



DON'T INSTALL A PERMANENT IRRIGATION SYSTEM IN LANDSLIDE-PRONE AREAS

DON'T PUT FILL OR YARD DEBRIS (INCLUDING LOGS OR TREE TRUNKS) ON A STEEP SLOPE



Seattle Department of
Construction & Inspections

(206) 615-0808

www.seattle.gov/sdci/about-us/who-we-are/emergency-management---landslides-and-earthquakes