

Assumptions for Next Time

People's GIS skill sets will increase

Superior social data will be available

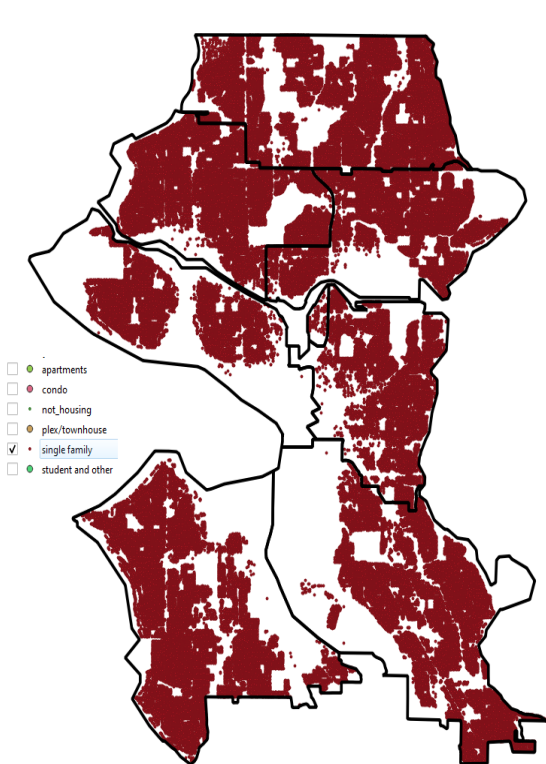
Better Software

Better/cheaper hardware/cloud

Qualitative human judgment will remain paramount

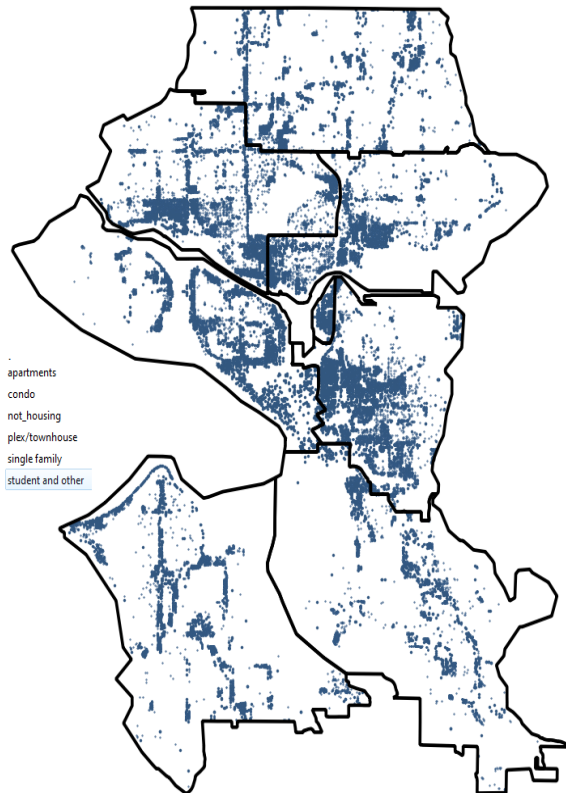
Implications: Software and Tools to Better:

Characterize Society



Single-family housing

- apartments
- condo
- not_housing
- plex/townhouse
- single family
- student and other



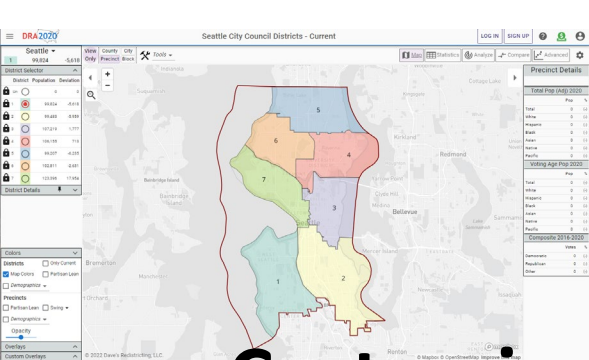
Multi-family housing

- apartments
- condo
- not_housing
- plex/townhouse
- single family
- student and other

Objectively Evaluate Candidate Maps



Neighborhoods Splits



Improve Map Making

Customize the functionality of Dave's map for ease of use

Encourage sharing of generated maps

Encourage discussion of maps (e.g. 5 minutes of public comments)

Provide access to a wide variety of data sets in a common format

Budget for 'open source' support

Provide a customized data structure

Support several metrics for the definition of a good map

Have a little less fear of the public

Use a more mathematically reasonable value
for population differences

