



Seattle Police Department

SEA STAT

December 9, 2015



PRINCIPLES OF SEASTAT

1. Accurate and Timely Information

Know what is happening

2. Effective Tactics

Have a plan

3. Rapid Deployment

Do it quickly

4. Relentless Follow-up and Assessment

If it works, do more. If not, do something else

FORMULATING CRIME REDUCTION STRATEGIES

Focus on...

- *Problem Locations*
- *Prolific Offenders*
- *Repeat and Vulnerable Victims*

SPD PUBLIC CRIME DASHBOARD UPDATES

SEATTLE POLICE DEPARTMENT

Service, Pride, and Dedication
Kathleen O'Toole, Chief of Police

CONTACTS & SERVICES

ABOUT SPD

POLICE WORK

WORKING TOGETHER

SAFETY & PREVENTION

DATA & INFORMATION

CAREERS & OPPORTUNITIES

Home / Crime Data / Crime Dashboard / How to Use the Dashboard



Crime Dashboard

How to Use the Dashboard

Methodology

SeaStat

Precinct and Neighborhood Locator Map

Online Crime Maps

SPD Data Sets

HOW TO USE THE DASHBOARD

Tutorial Video - Overview of the Crime Dashboard



[Crime Dashboard - Seattle Police Department | seattle.gov](https://seattle.gov)

CrimeDashboard@Seattle.gov



CITYWIDE MAJOR CRIME

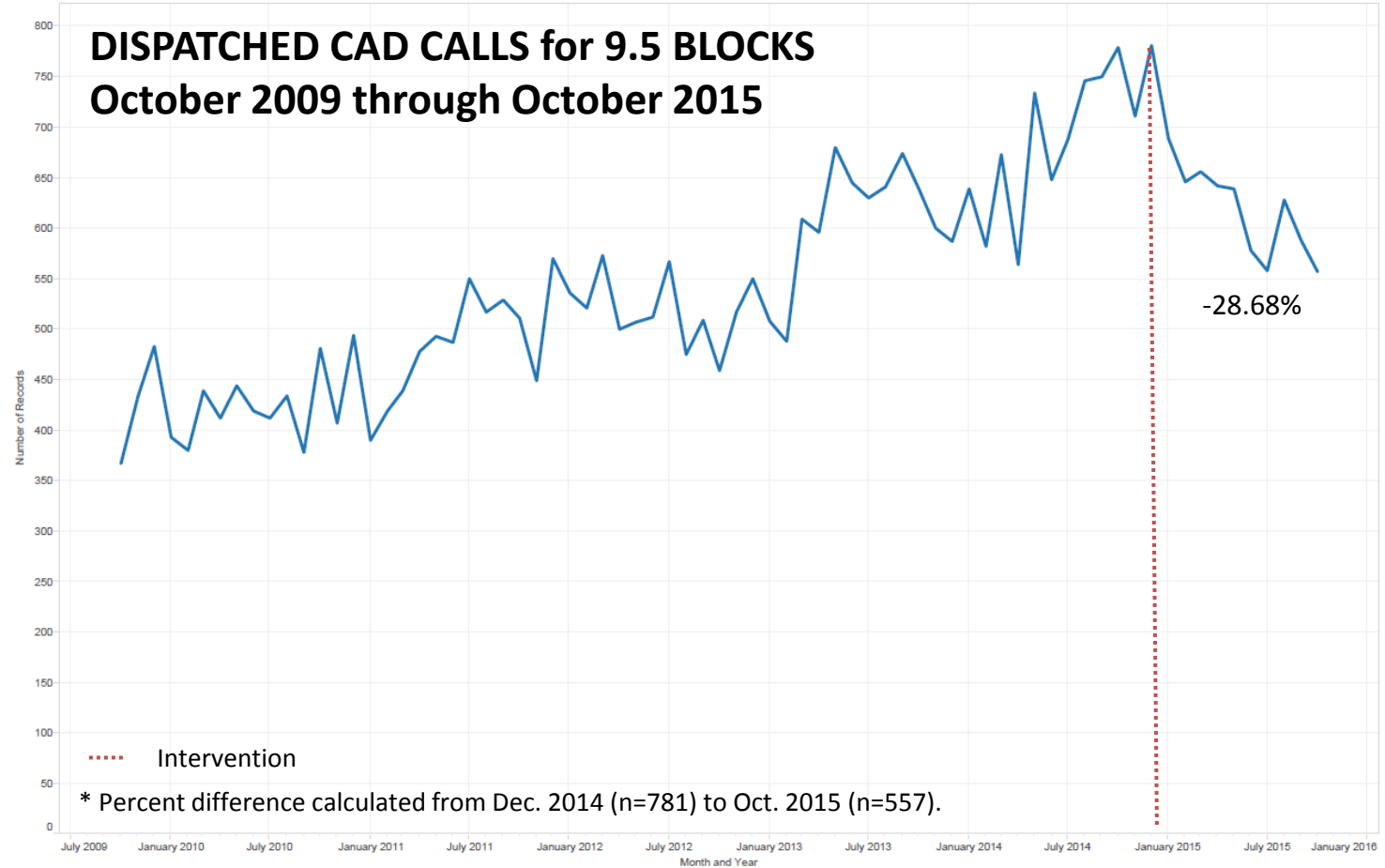
28 Day & Year to Date (YTD) Detail

Crime Category	WEEK 1 11/08 - 11/14	WEEK 2 11/15 - 11/21	WEEK 3 11/22 - 11/28	WEEK 4 11/29 - 12/05	28 DAY Total	YTD 12/05 2014	YTD 12/05 2015	YTD Amount Change	YTD % Change
Homicide	0	0	0	0	0	21	22	1	+5%
Rape	5	3	2	0	10	110	97	-13	-12%
Robbery	25	17	29	21	92	1,453	1,447	-6	-0%
DV Assault - Aggravated	12	18	17	10	57	628	524	-104	-17%
Assault-Aggravated (Excludes DV)	18	27	26	18	89	1,235	1,369	134	+11%
Person Crime TOTAL	60	65	74	49	248	3,447	3,459	12	+0%
Burglary - Residential	109	127	113	48	397	4,722	4,946	224	+5%
Burglary - Non-Residential	48	43	33	21	145	1,857	1,855	-2	-0%
Larceny-Theft	167	186	136	101	590	11,839	11,267	-572	-5%
Carprowl/Theft-Auto Accessories-Auto Parts-License Plate	283	305	248	95	931	14,250	12,315	-1,935	-14%
Motor Vehicle Theft	54	48	70	96	268	5,154	3,422	-1,732	-34%
Property Crime TOTAL	661	709	600	361	2,331	37,822	33,805	-4,017	-11%
GRAND TOTAL	721	774	674	410	2,579	41,269	37,264	-4,005	-10%

Data derived from SPD Operations Dashboard on 12/8/15.

9.5 BLOCKS

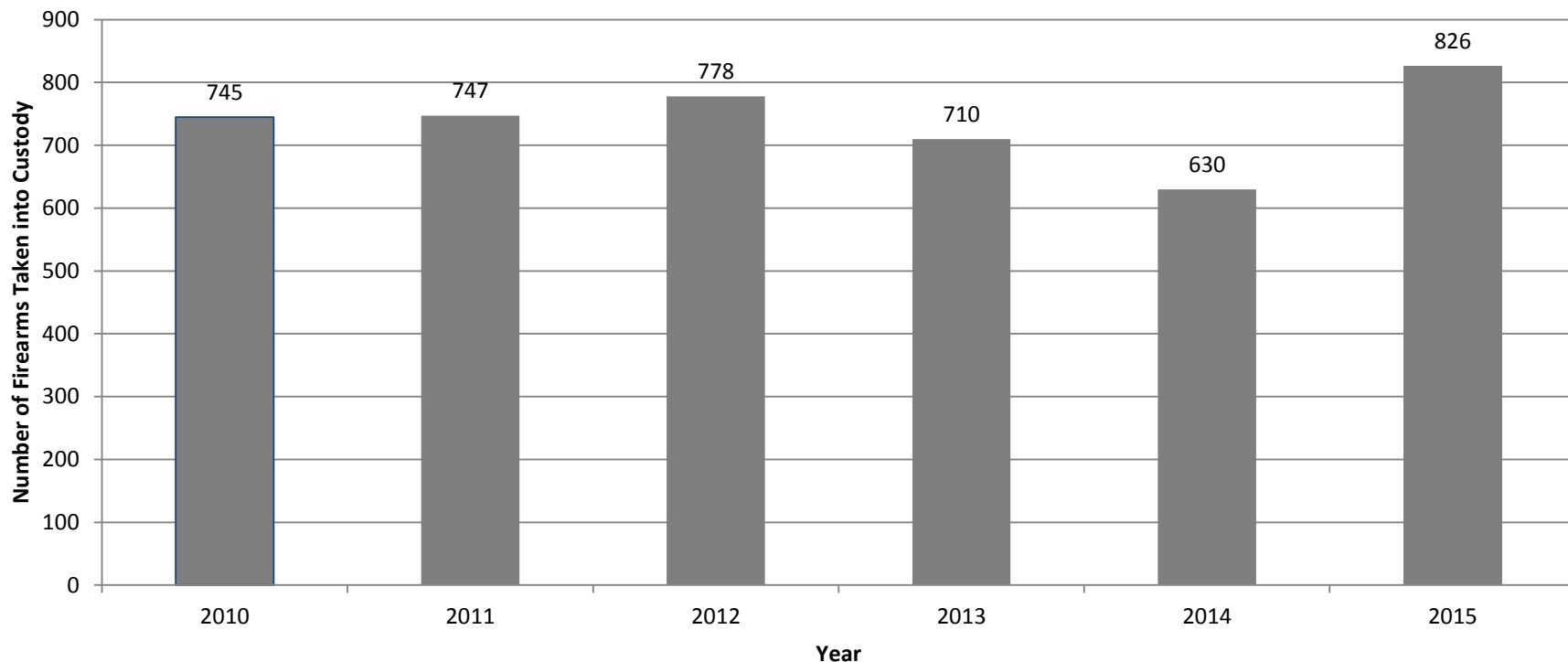
Sheet 1



FIREARMS TAKEN INTO CUSTODY

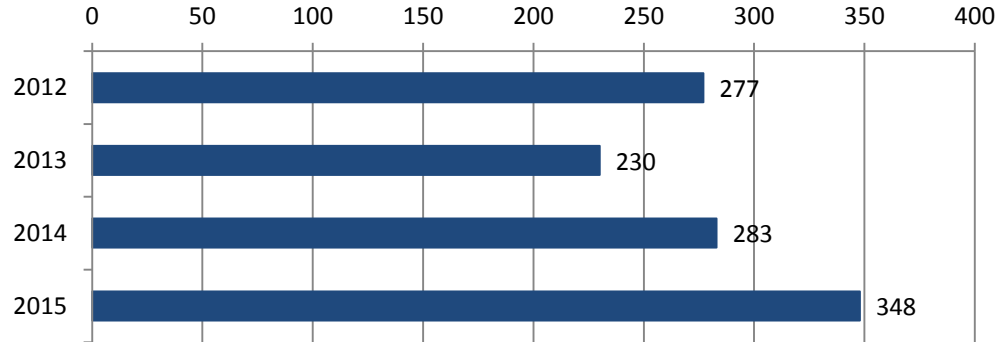
Firearms Taken into Custody by Year January 1 to November 30 (2010-2015)

Firearms are obtained through civilian turn-ins, surrenders, found property, and criminal investigations.

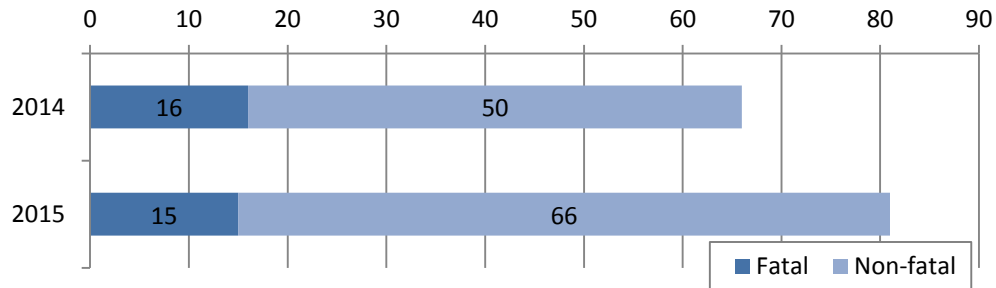


SHOTS FIRED REPORT

Shots Fired
January 1 to November 23 (2012-2015)



Shootings that Resulted in Injury or Death
January 1 to November 23 (2014 and 2015)

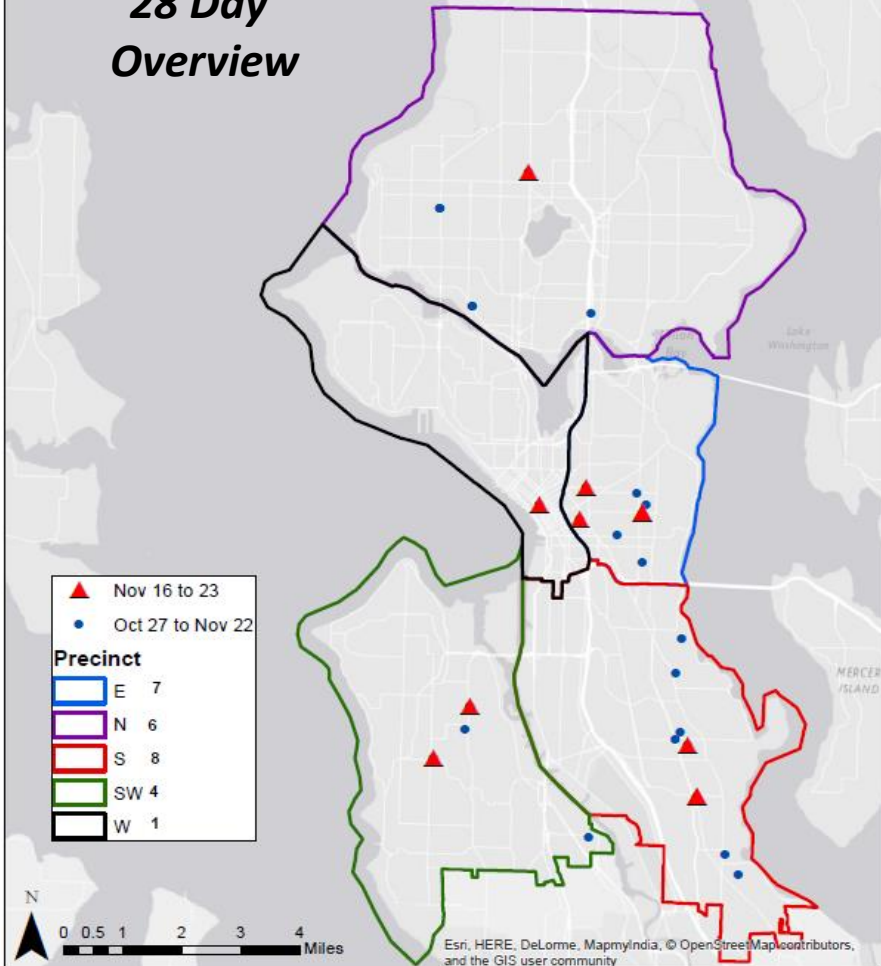


Counts are based on reports with evidence of, or eyewitnesses to, shots fired. Suicides, certain accidental discharges, and OIS are eliminated from the tally.

Shots Fired October 27 to November 23, 2015 (26 GOs citywide*)

*Does not include Self Inflicted or OIS

28 Day Overview



PRECINCT UPDATES

West



WEST PRECINCT MAJOR CRIME

28 Day & Year to Date (YTD) Detail WEST

Crime Category	WEEK 1 11/08 - 11/14	WEEK 2 11/15 - 11/21	WEEK 3 11/22 - 11/28	WEEK 4 11/29 - 12/05	28 DAY Total	YTD 12/05 2014	YTD 12/05 2015	YTD Amount Change	YTD % Change
Homicide	0	0	0	0	0	11	8	-3	-27%
Rape	2	2	1	0	5	30	30	0	+0%
Robbery	7	7	10	7	31	451	430	-21	-5%
DV Assault - Aggravated	2	0	0	3	5	93	73	-20	-22%
Assault-Aggravated (Excludes DV)	4	10	9	4	27	369	397	28	+8%
Person Crime TOTAL	15	19	20	14	68	954	938	-16	-2%
Burglary - Residential	10	16	13	5	44	555	880	325	+59%
Burglary - Non-Residential	5	9	6	8	28	519	573	54	+10%
Larceny-Theft	50	50	25	21	146	3,963	3,567	-396	-10%
Carprowl/Theft-Auto Accessories-Auto Parts-License Plate	62	73	64	23	222	4,283	3,712	-571	-13%
Motor Vehicle Theft	4	5	7	15	31	760	492	-268	-35%
Property Crime TOTAL	131	153	115	72	471	10,080	9,224	-856	-8%
GRAND TOTAL	146	172	135	86	539	11,034	10,162	-872	-8%

Data derived from SPD Operations Dashboard on 12/8/15.

PRECINCT UPDATES

South



SOUTH PRECINCT MAJOR CRIME

28 Day & Year to Date (YTD) Detail SOUTH

Crime Category	WEEK 1 11/08 - 11/14	WEEK 2 11/15 - 11/21	WEEK 3 11/22 - 11/28	WEEK 4 11/29 - 12/05	28 DAY Total	YTD 12/05 2014	YTD 12/05 2015	YTD Amount Change	YTD % Change
Homicide	0	0	0	0	0	2	4	2	+100%
Rape	0	0	1	0	1	20	13	-7	-35%
Robbery	4	3	4	5	16	327	271	-56	-17%
DV Assault - Aggravated	2	3	7	2	14	182	134	-48	-26%
Assault-Aggravated (Excludes DV)	2	6	2	5	15	212	220	8	+4%
Person Crime TOTAL	8	12	14	12	46	743	642	-101	-14%
Burglary - Residential	10	22	23	6	61	1,040	704	-336	-32%
Burglary - Non-Residential	8	7	2	2	19	246	250	4	+2%
Larceny-Theft	28	19	14	12	73	1,197	1,013	-184	-15%
Carprowl/Theft-Auto Accessories-Auto Parts-License Plate	40	41	31	22	134	2,114	1,534	-580	-27%
Motor Vehicle Theft	7	8	11	21	47	846	636	-210	-25%
Property Crime TOTAL	93	97	81	63	334	5,443	4,137	-1,306	-24%
GRAND TOTAL	101	109	95	75	380	6,186	4,779	-1,407	-23%

Data derived from SPD Operations Dashboard on 12/8/15.

PRECINCT UPDATES

Southwest



SW PRECINCT MAJOR CRIME

28 Day & Year to Date (YTD) Detail SW

Crime Category	WEEK 1 11/08 - 11/14	WEEK 2 11/15 - 11/21	WEEK 3 11/22 - 11/28	WEEK 4 11/29 - 12/05	28 DAY Total	YTD 12/05 2014	YTD 12/05 2015	YTD Amount Change	YTD % Change
Homicide	0	0	0	0	0	1	3	2	+200%
Rape	0	0	0	0	0	12	9	-3	-25%
Robbery	5	2	4	1	12	109	130	21	+19%
DV Assault - Aggravated	2	1	2	2	7	87	72	-15	-17%
Assault-Aggravated (Excludes DV)	4	3	2	0	9	103	93	-10	-10%
Person Crime TOTAL	11	6	8	3	28	312	307	-5	-2%
Burglary - Residential	11	11	8	10	40	481	470	-11	-2%
Burglary - Non-Residential	3	8	4	5	20	152	150	-2	-1%
Larceny-Theft	13	16	16	4	49	895	948	53	+6%
Carprowl/Theft-Auto Accessories-Auto Parts-License Plate	27	32	33	9	101	845	974	129	+15%
Motor Vehicle Theft	6	7	11	10	34	486	448	-38	-8%
Property Crime TOTAL	60	74	72	38	244	2,859	2,990	131	+5%
GRAND TOTAL	71	80	80	41	272	3,171	3,297	126	+4%

Data derived from SPD Operations Dashboard on 12/8/15.

PRECINCT UPDATES

North



NORTH PRECINCT MAJOR CRIME

28 Day & Year to Date (YTD) Detail NORTH

Crime Category	WEEK 1 11/08 - 11/14	WEEK 2 11/15 - 11/21	WEEK 3 11/22 - 11/28	WEEK 4 11/29 - 12/05	28 DAY Total	YTD 12/05 2014	YTD 12/05 2015	YTD Amount Change	YTD % Change
Homicide	0	0	0	0	0	2	3	1	+50%
Rape	0	1	0	0	1	28	27	-1	-4%
Robbery	8	3	6	7	24	297	367	70	+24%
DV Assault - Aggravated	4	10	5	3	22	158	151	-7	-4%
Assault-Aggravated (Excludes DV)	5	1	8	5	19	295	363	68	+23%
Person Crime TOTAL	17	15	19	15	66	780	911	131	+17%
Burglary - Residential	58	51	54	19	182	1,955	2,000	45	+2%
Burglary - Non-Residential	24	14	17	6	61	679	659	-20	-3%
Larceny-Theft	54	76	57	35	222	3,851	3,961	110	+3%
Carprowl/Theft-Auto Accessories-Auto Parts-License Plate	95	95	62	24	276	4,122	3,643	-479	-12%
Motor Vehicle Theft	28	19	25	42	114	2,361	1,351	-1,010	-43%
Property Crime TOTAL	259	255	215	126	855	12,968	11,614	-1,354	-10%
GRAND TOTAL	276	270	234	141	921	13,748	12,525	-1,223	-9%

Data derived from SPD Operations Dashboard on 12/8/15.

PRECINCT UPDATES

East



EAST PRECINCT MAJOR CRIME

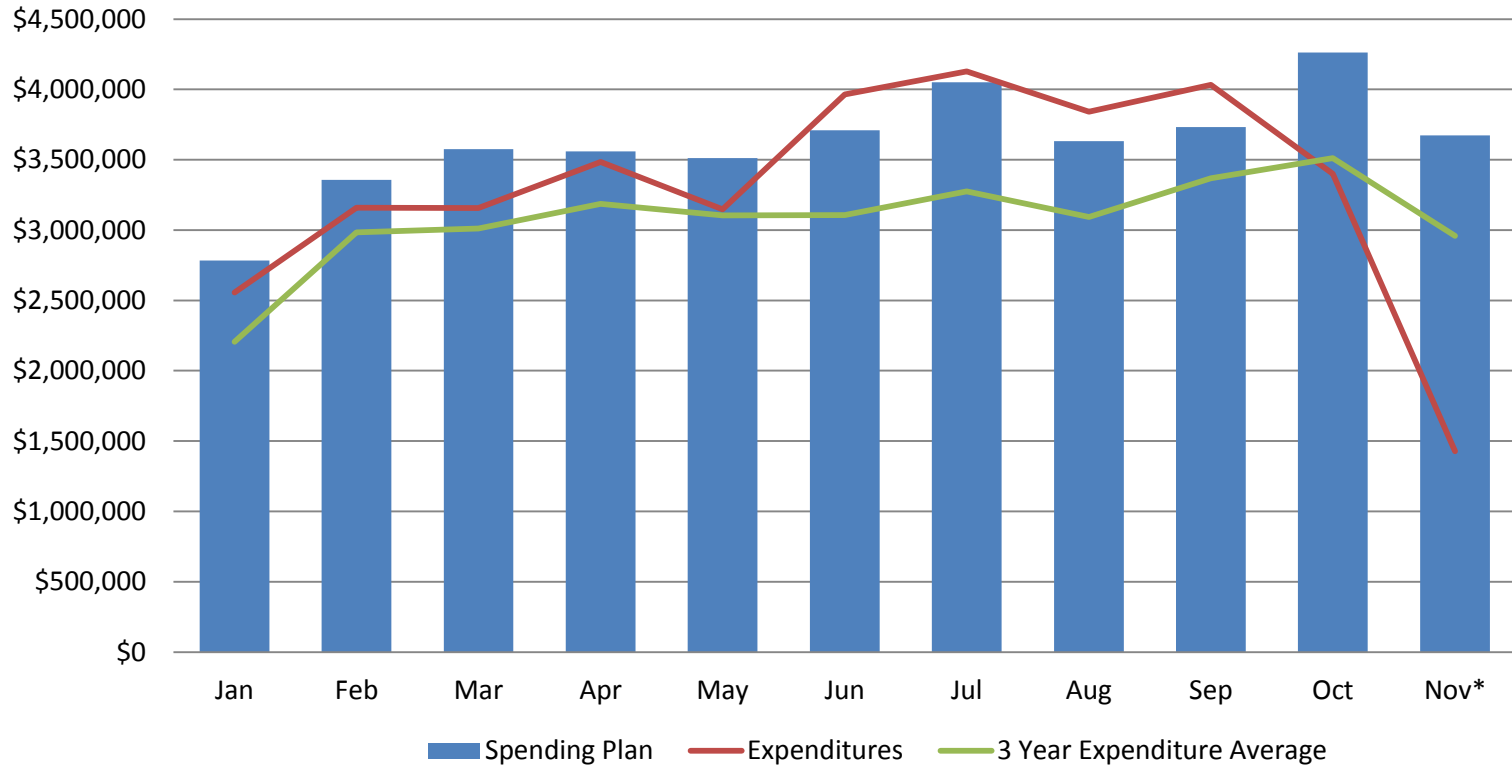
28 Day & Year to Date (YTD) Detail EAST

Crime Category	WEEK 1 11/08 - 11/14	WEEK 2 11/15 - 11/21	WEEK 3 11/22 - 11/28	WEEK 4 11/29 - 12/05	28 DAY Total	YTD 12/05 2014	YTD 12/05 2015	YTD Amount Change	YTD % Change
Homicide	0	0	0	0	0	5	4	-1	-20%
Rape	2	0	0	0	2	13	9	-4	-31%
Robbery	1	2	4	1	8	260	240	-20	-8%
DV Assault - Aggravated	2	4	3	0	9	103	89	-14	-14%
Assault-Aggravated (Excludes DV)	3	6	5	4	18	249	279	30	+12%
Person Crime TOTAL	8	12	12	5	37	630	621	-9	-1%
Burglary - Residential	20	27	15	8	70	682	887	205	+30%
Burglary - Non-Residential	7	5	4	0	16	261	219	-42	-16%
Larceny-Theft	22	25	24	29	100	1,897	1,753	-144	-8%
Carprowl/Theft-Auto Accessories-Auto Parts-License Plate	59	63	57	16	195	2,846	2,428	-418	-15%
Motor Vehicle Theft	9	8	16	8	41	696	493	-203	-29%
Property Crime TOTAL	117	128	116	61	422	6,382	5,780	-602	-9%
GRAND TOTAL	125	140	128	66	459	7,012	6,401	-611	-9%

Data derived from SPD Operations Dashboard on 12/8/15.

BUDGET AND FINANCE

Expenditures vs. Spending Plan - Other Charges



* Expenditures as of 12/7; November closes in Summit on 12/11

BUDGET AND FINANCE

2015 SPD General Fund Overtime - Dollars

Allocation Expenditures

