



Seattle Police Department

SEA STAT

September 17, 2014

Kathleen O'Toole

Chief of Police

Principles of SeaSTAT

1. Accurate and timely information

Know what is happening

2. Effective Tactics

Have a plan

3. Rapid Deployment

Do it quickly

4. Relentless Follow-Up and Assessment

If it works, do more. If not, do something else

Formulating Crime Reduction Strategies

Focus on...

- *Problem Locations*
- *Prolific Offenders*
- *Repeat and Vulnerable Victims*

Summary Crime Data for the City of Seattle

January to August (2013 and 2014)

Offense Category ¹	Jan		Feb		Mar		Apr		May		Jun		Jul		Aug		YTD Total		# Diff.	% Chng.
	2013	2014	2013	2014	2013	2014	2013	2014	2013	2014	2013	2014	2013	2014	2013	2014	2013	2014		
Homicide	0	1	1	2	4	0	1	4	3	1	1	5	4	3	0	1	14	17	3	21%
Rape	6	8	16	9	5	9	5	7	7	15	12	6	18	16	12	14	81	84	3	4%
Robbery	119	129	135	79	98	139	103	126	136	136	125	149	148	123	159	151	1023	1032	9	1%
Aggravated Assault	148	183	150	151	138	161	151	187	186	212	153	193	211	204	182	211	1319	1502	183	14%
Violent Crime²	273	321	302	241	245	309	260	324	332	364	291	353	381	346	353	377	2437	2635	198	8%
Burglary	689	647	540	499	661	549	607	559	706	609	586	601	565	608	612	597	4966	4669	-297	-6%
Larceny-Theft³	1979	2284	1620	1931	1953	2318	1836	2563	2224	2502	2104	2378	2227	2265	2197	2242	16140	18483	2343	15%
Motor Vehicle Theft	343	443	270	370	283	401	314	483	349	532	347	613	365	542	338	383	2609	3767	1158	44%
Property Crime⁴	3011	3374	2430	2800	2897	3268	2757	3605	3279	3643	3037	3592	3157	3415	3147	3222	23715	26919	3204	14%
Total	3284	3695	2732	3041	3142	3577	3017	3929	3611	4007	3328	3945	3538	3761	3500	3599	26152	29554	3402	13%

¹Offense categories are based on FBI UCR Summary business rules

²Violent Crime includes Homicide, Rape, Robbery, and Aggravated Assault

³Larceny-Theft data was extracted from SPD RMS in order to account for backlogs in online reporting, and will differ from standard UCR Summary data

⁴Property Crime includes Burglary, Larceny-Theft, and Motor Vehicle Theft

Summary Crime Data for the City of Seattle

January to August (2013 and 2014)

Offense Category ¹	Jan		Feb		Mar		Apr		May		Jun		Jul		Aug		YTD Total		# Diff.	% Chng.
	2013	2014	2013	2014	2013	2014	2013	2014	2013	2014	2013	2014	2013	2014	2013	2014	2013	2014		
Homicide	0	1	1	2	4	0	1	4	3	1	1	5	4	3	0	1	14	17	3	21%
Rape	6	8	16	9	5	9	5	7	7	15	12	6	18	16	12	14	81	84	3	4%
Robbery	119	129	135	79	98	139	103	126	136	136	125	149	148	123	159	151	1023	1032	9	1%
Aggravated Assault	148	183	150	151	138	161	151	187	186	212	153	193	211	204	182	211	1319	1502	183	14%
Violent Crime²	273	321	302	241	245	309	260	324	332	364	291	353	381	346	353	377	2437	2635	198	8%
Burglary	689	647	540	499	661	549	607	559	706	609	586	601	565	608	612	597	4966	4669	-297	-6%
Larceny-Theft³	1979	2284	1620	1931	1953	2318	1836	2563	2224	2502	2104	2378	2227	2265	2197	2242	16140	18483	2343	15%
Motor Vehicle Theft	343	443	270	370	283	401	314	483	349	532	347	613	365	542	338	383	2609	3767	1158	44%
Property Crime⁴	3011	3374	2430	2800	2897	3268	2757	3605	3279	3643	3037	3592	3157	3415	3147	3222	23715	26919	3204	14%
Total	3284	3695	2732	3041	3142	3577	3017	3929	3611	4007	3328	3945	3538	3761	3500	3599	26152	29554	3402	13%

¹Offense categories are based on FBI UCR Summary business rules

²Violent Crime includes Homicide, Rape, Robbery, and Aggravated Assault

³Larceny-Theft data was extracted from SPD RMS in order to account for backlogs in online reporting, and will differ from standard UCR Summary data

⁴Property Crime includes Burglary, Larceny-Theft, and Motor Vehicle Theft

Summary Crime Data for the City of Seattle

January to August (2013 and 2014)

Offense Category ¹	Jan		Feb		Mar		Apr		May		Jun		Jul		Aug		YTD Total		# Diff.	% Chng.
	2013	2014	2013	2014	2013	2014	2013	2014	2013	2014	2013	2014	2013	2014	2013	2014	2013	2014		
Homicide	0	1	1	2	4	0	1	4	3	1	1	5	4	3	0	1	14	17	3	21%
Rape	6	8	16	9	5	9	5	7	7	15	12	6	18	16	12	14	81	84	3	4%
Robbery	119	129	135	79	98	139	103	126	136	136	125	149	148	123	159	151	1023	1032	9	1%
Aggravated Assault	148	183	150	151	138	161	151	187	186	212	153	193	211	204	182	211	1319	1502	183	14%
<i>Violent Crime²</i>	<i>273</i>	<i>321</i>	<i>302</i>	<i>241</i>	<i>245</i>	<i>309</i>	<i>260</i>	<i>324</i>	<i>332</i>	<i>364</i>	<i>291</i>	<i>353</i>	<i>381</i>	<i>346</i>	<i>353</i>	<i>377</i>	<i>2437</i>	<i>2635</i>	<i>198</i>	<i>8%</i>
Burglary	689	647	540	499	661	549	607	559	706	609	586	601	565	608	612	597	4966	4669	-297	-6%
Larceny-Theft³	1979	2284	1620	1931	1953	2318	1836	2563	2224	2502	2104	2378	2227	2265	2197	2242	16140	18483	2343	15%
Motor Vehicle Theft	343	443	270	370	283	401	314	483	349	532	347	613	365	542	338	383	2609	3767	1158	44%
<i>Property Crime⁴</i>	<i>3011</i>	<i>3374</i>	<i>2430</i>	<i>2800</i>	<i>2897</i>	<i>3268</i>	<i>2757</i>	<i>3605</i>	<i>3279</i>	<i>3643</i>	<i>3037</i>	<i>3592</i>	<i>3157</i>	<i>3415</i>	<i>3147</i>	<i>3222</i>	<i>23715</i>	<i>26919</i>	<i>3204</i>	<i>14%</i>
Total	3284	3695	2732	3041	3142	3577	3017	3929	3611	4007	3328	3945	3538	3761	3500	3599	26152	29554	3402	13%

¹Offense categories are based on FBI UCR Summary business rules

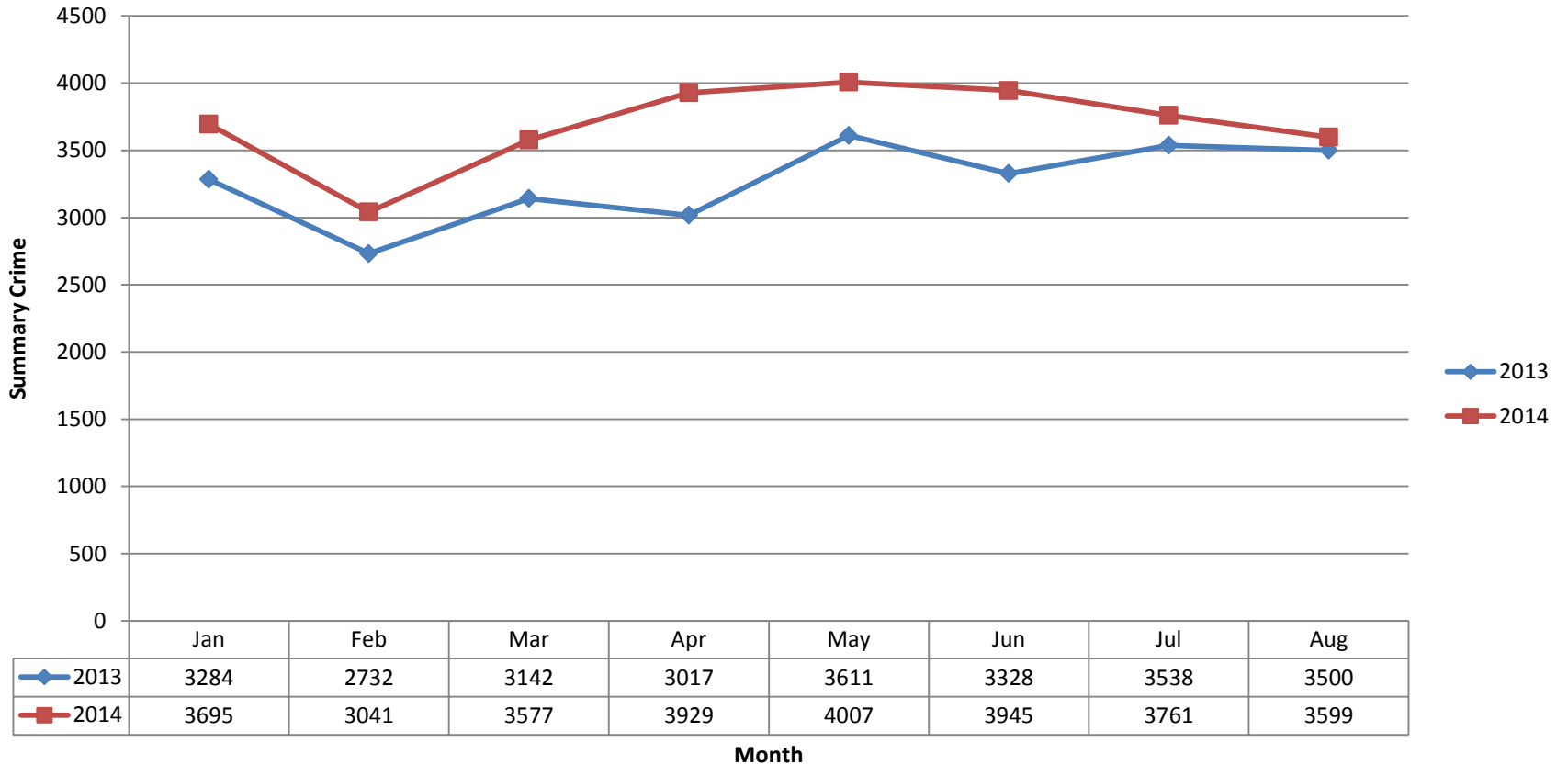
²Violent Crime includes Homicide, Rape, Robbery, and Aggravated Assault

³Larceny-Theft data was extracted from SPD RMS in order to account for backlogs in online reporting, and will differ from standard UCR Summary data

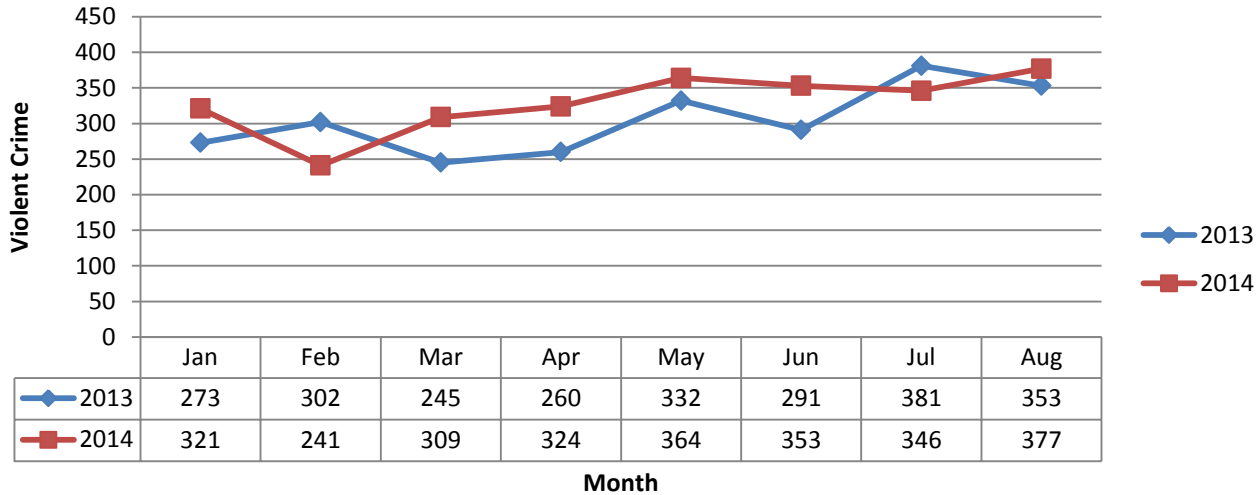
⁴Property Crime includes Burglary, Larceny-Theft, and Motor Vehicle Theft

Summary Crime for the City of Seattle January to August (2013 and 2014)

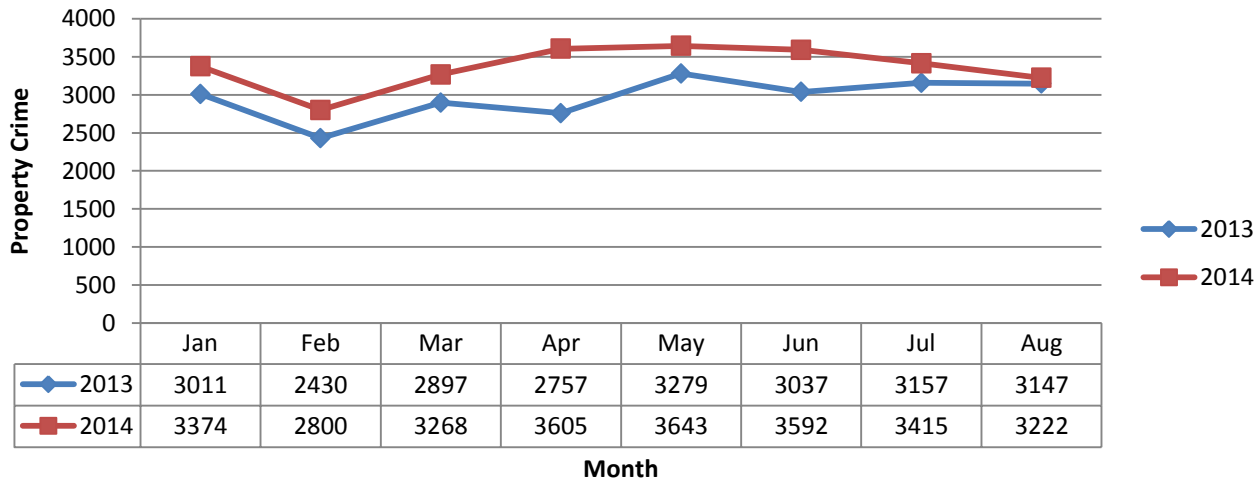
Summary Crime: Homicide, Rape, Robbery, Aggravated Assault, Burglary, Larceny-Theft, and Motor Vehicle Theft



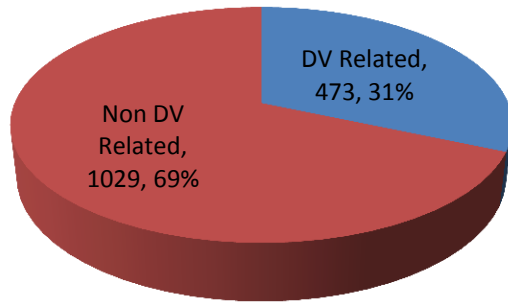
Violent Crime for the City of Seattle January to August (2013 and 2014)



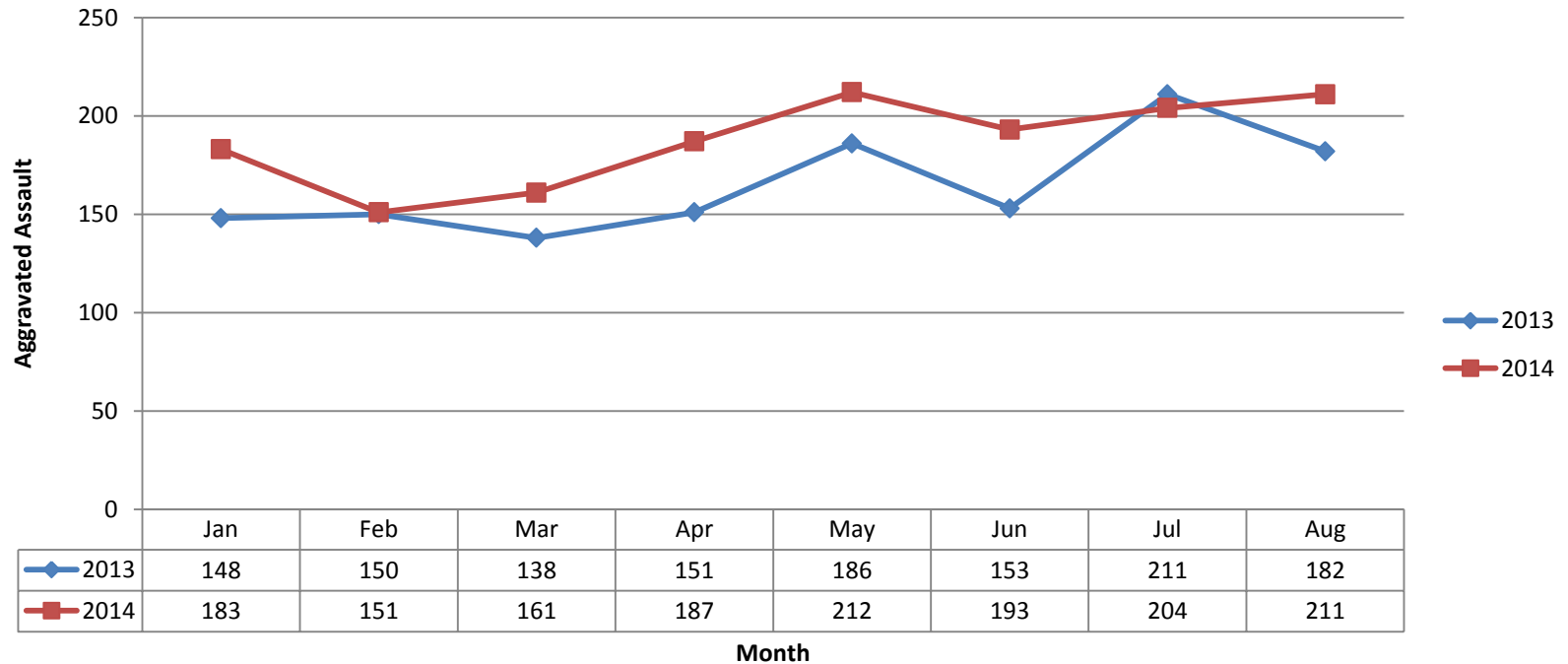
Property Crime for the City of Seattle January to August (2013 and 2014)



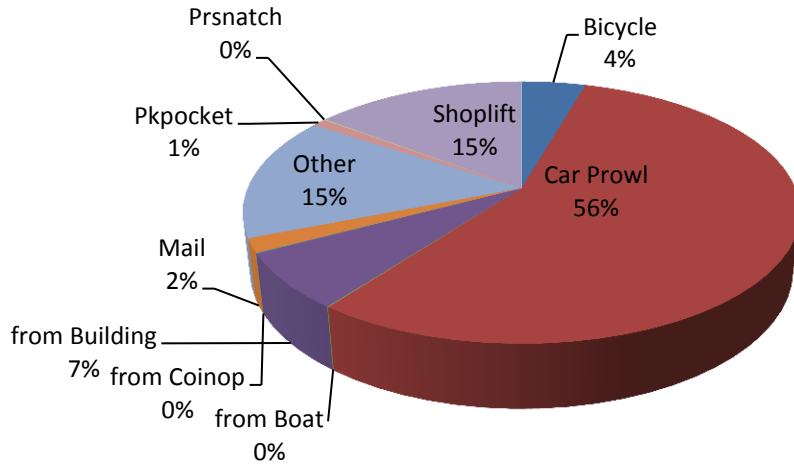
Aggravated Assault January to August 2014



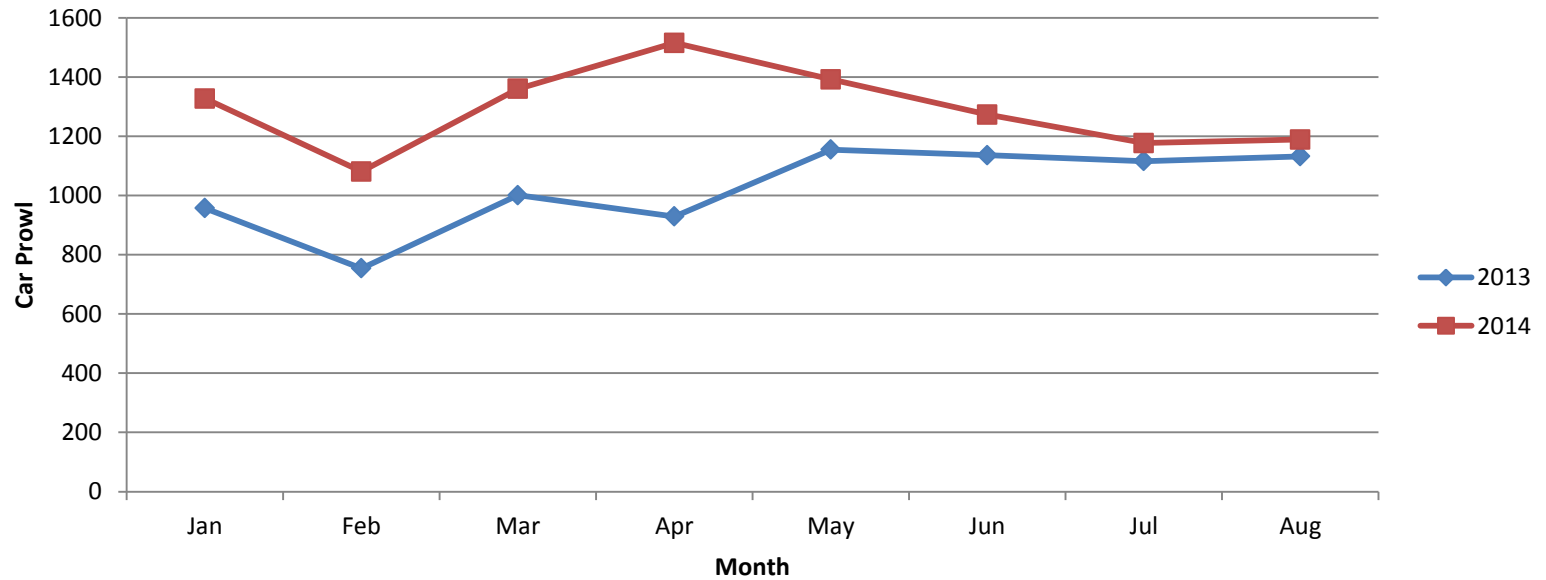
Aggravated Assault for the City of Seattle January to August (2013 and 2014)



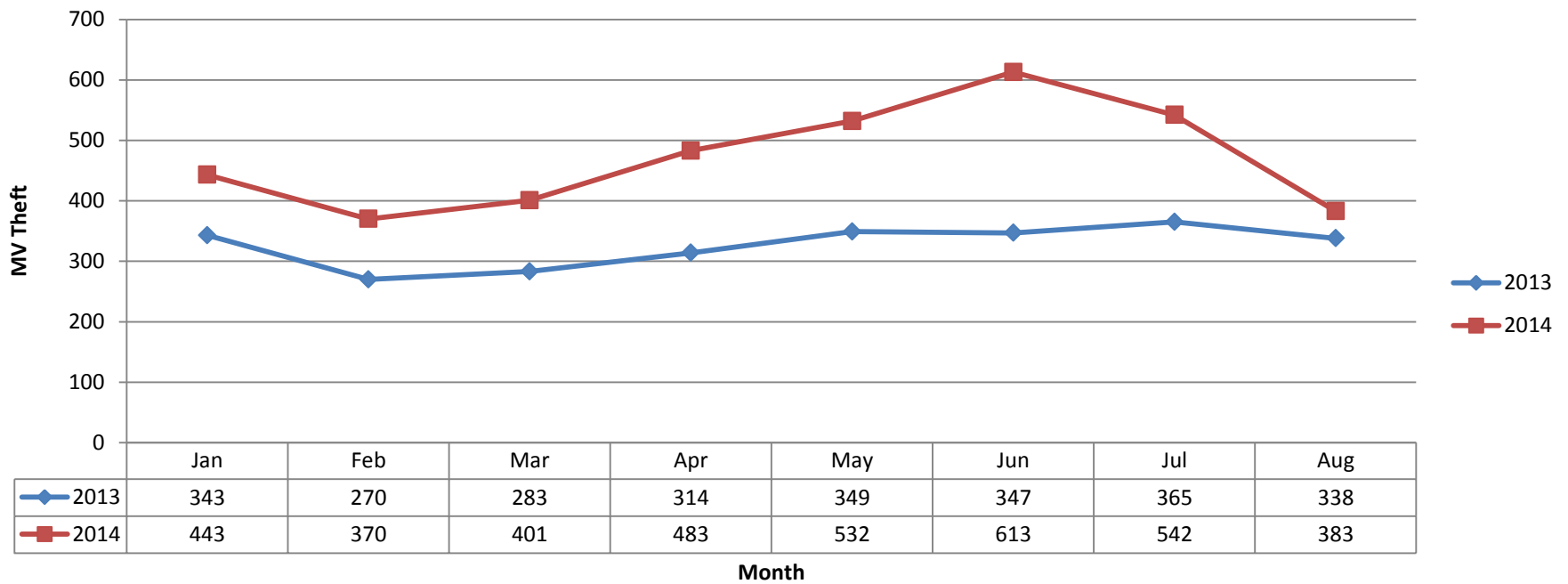
Larceny-Theft by Type January to August 2014



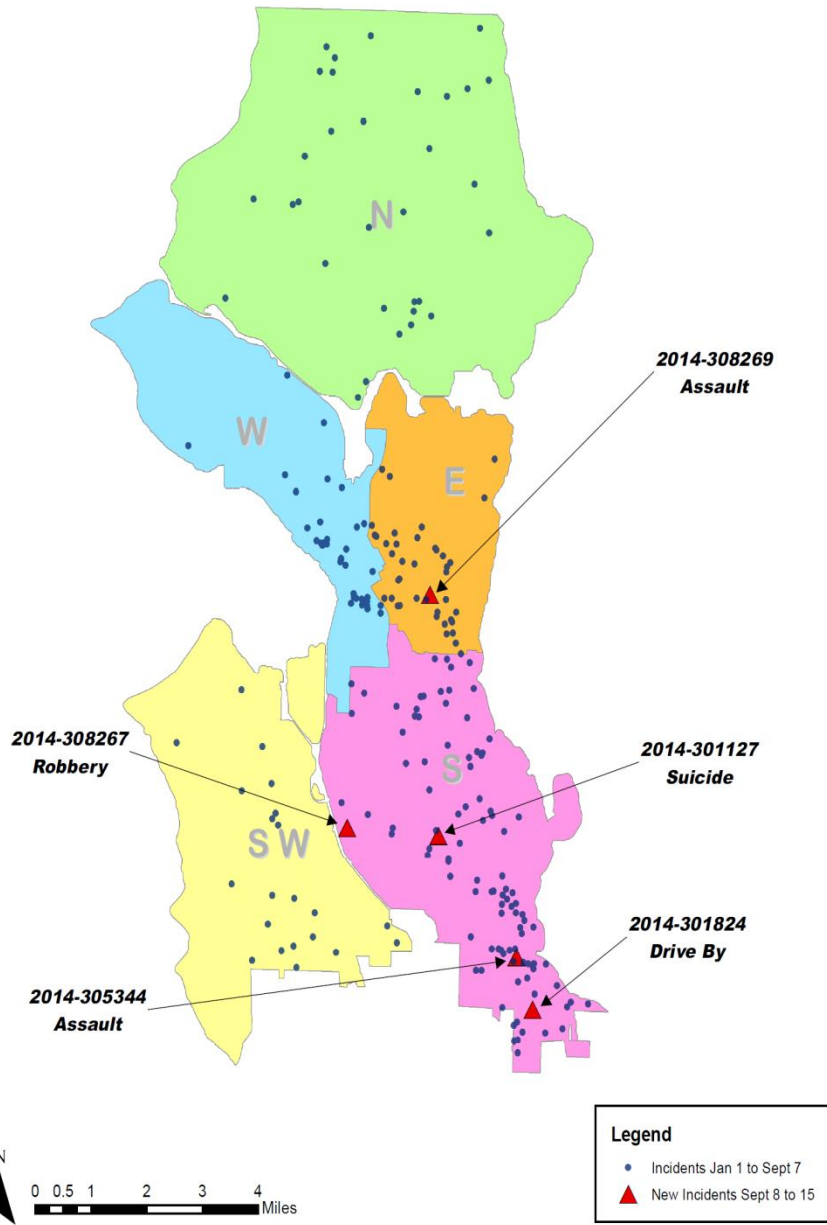
Car Prowl for the City of Seattle January to August (2013 and 2014)



Motor Vehicle Theft for the City of Seattle January to August (2013 and 2014)



Shots Fired GO Reports September 8 to 15, 2014



Year 2012 through Sept. 15	Year 2013 through Sept. 15	Year 2014 through Sept. 15
257 Incidents	210 Incidents	244 Incidents

- Incidents Since 9-3-2014
- 2 Suicides
 - 3 Assaults
 - 2 Robberies
 - 1 Drive –By
 - 1 Disturbance
 - 1 Property Damage
 - 1 Unkn

Based solely on GO reports with evidence of, or eyewitnesses to, shots fired.

North Precinct Auto Theft Hot Spot

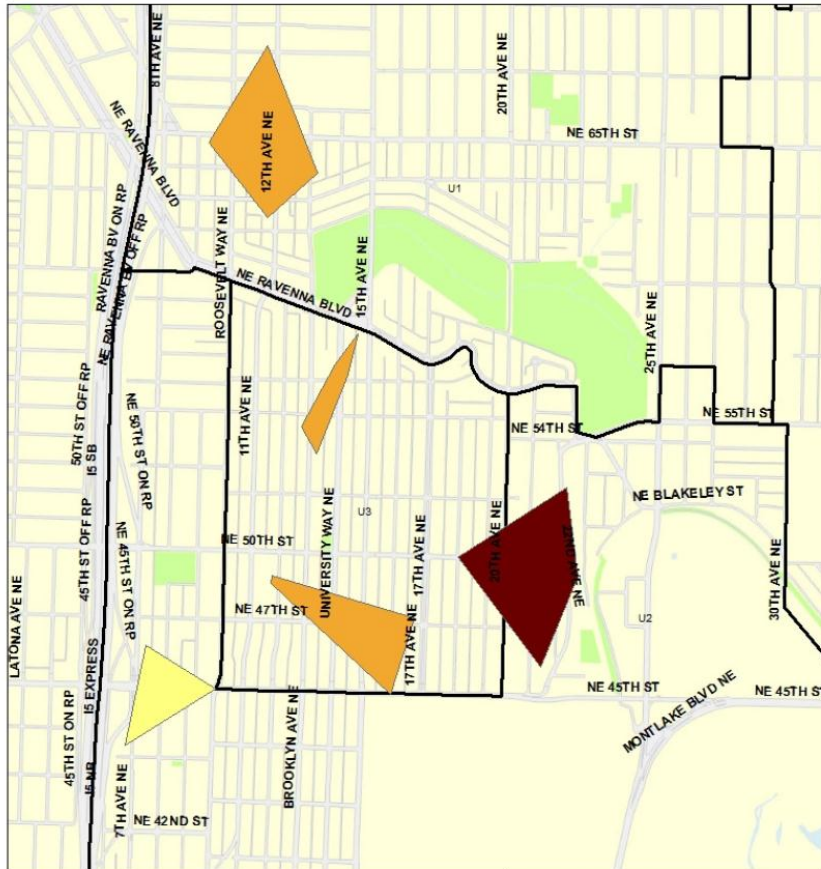
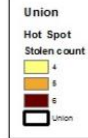
GO #: Union Auto Theft
Date: September 15, 2014



Union Sector Auto Theft Hot Spots Aug 15-Sep 14 2014

Date: 9/15/2014

CONFIDENTIAL - FOR POLICE USE ONLY



Prepared by: Seattle Police Department Crime Analysis Unit



30 Day Hot Spot Map:
Total Vehicles Stolen: 43
% Change from Same Time Period Last Year: -2%

TIME OF DAY: Vehicles are typically stolen between 2100 and 0300.

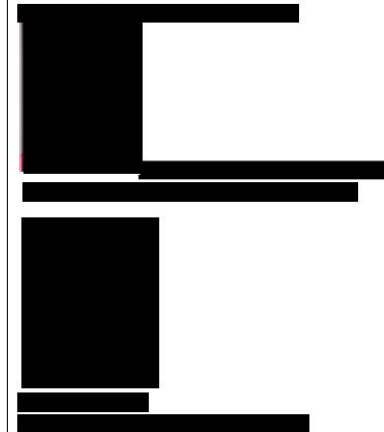
DAY OF WEEK: Wed 9, Thu, Fri, Sun, and Tue, 7 vehicles each.

REPEAT ADDRESSES: 4700 block of 12 Av NE

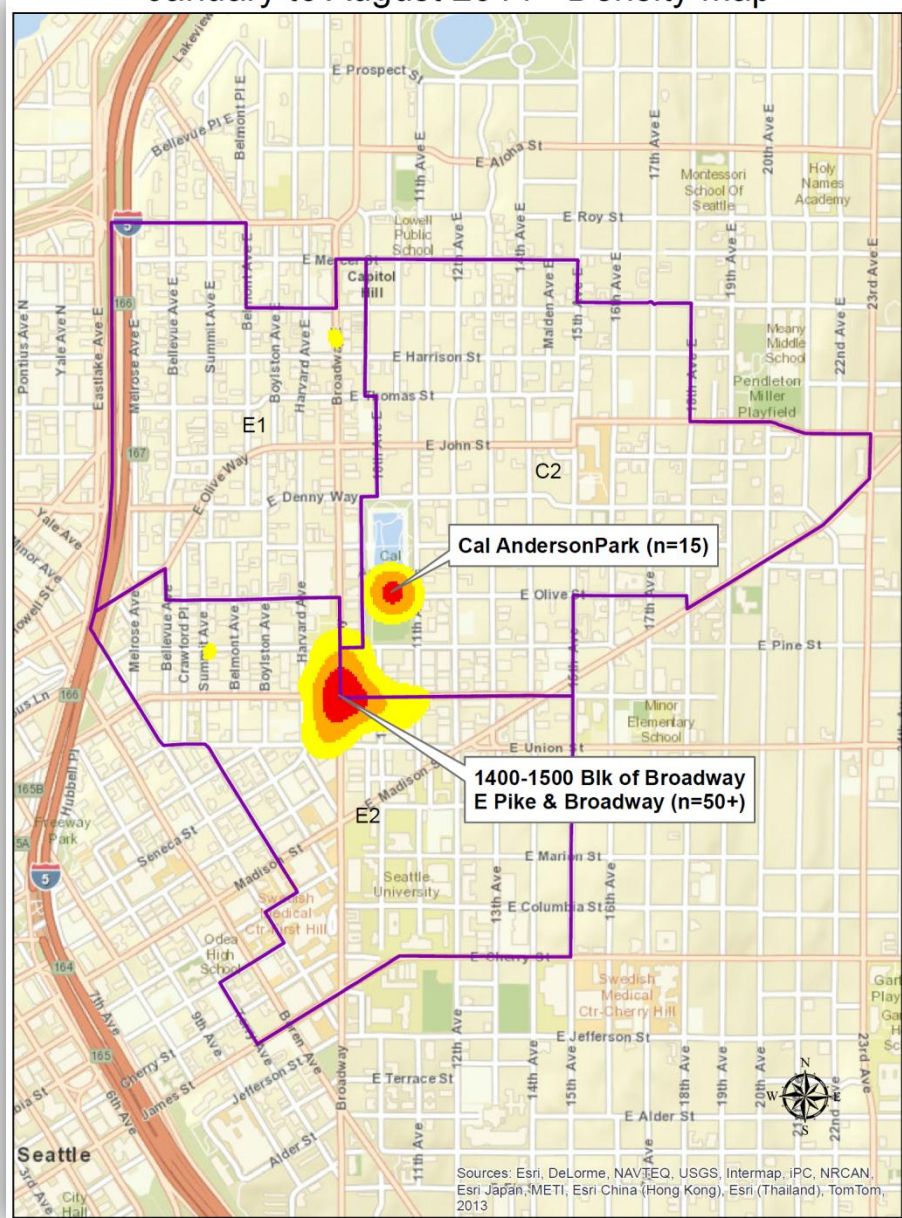
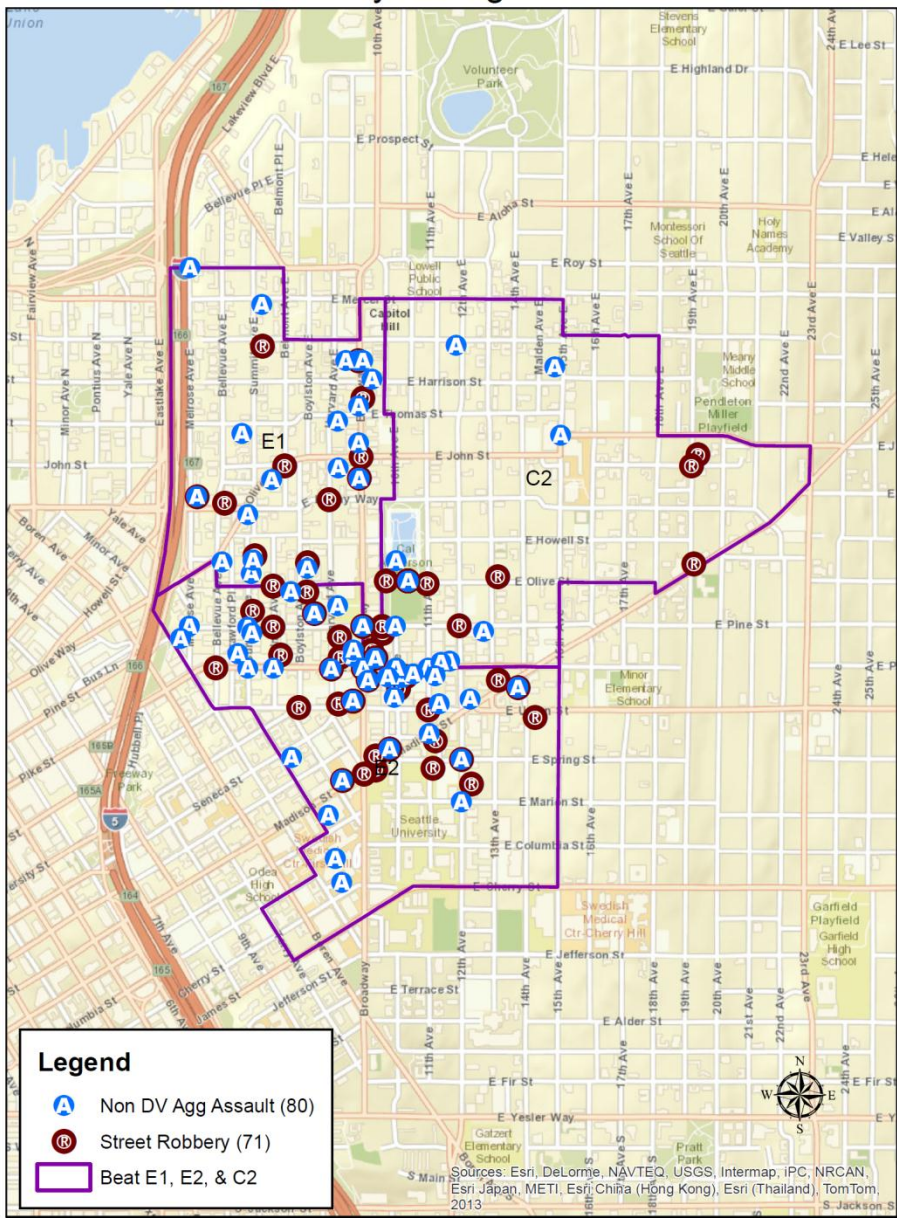
MOST COMMON VEHICLES STOLEN:
LATE 1990'S and EARLY 2000'S

MAKE	MODEL	COUNT
HOND	CIV	6
SUBA	LEG	5
HOND	ACC	3

SUSPECTS LAST 30 DAYS:

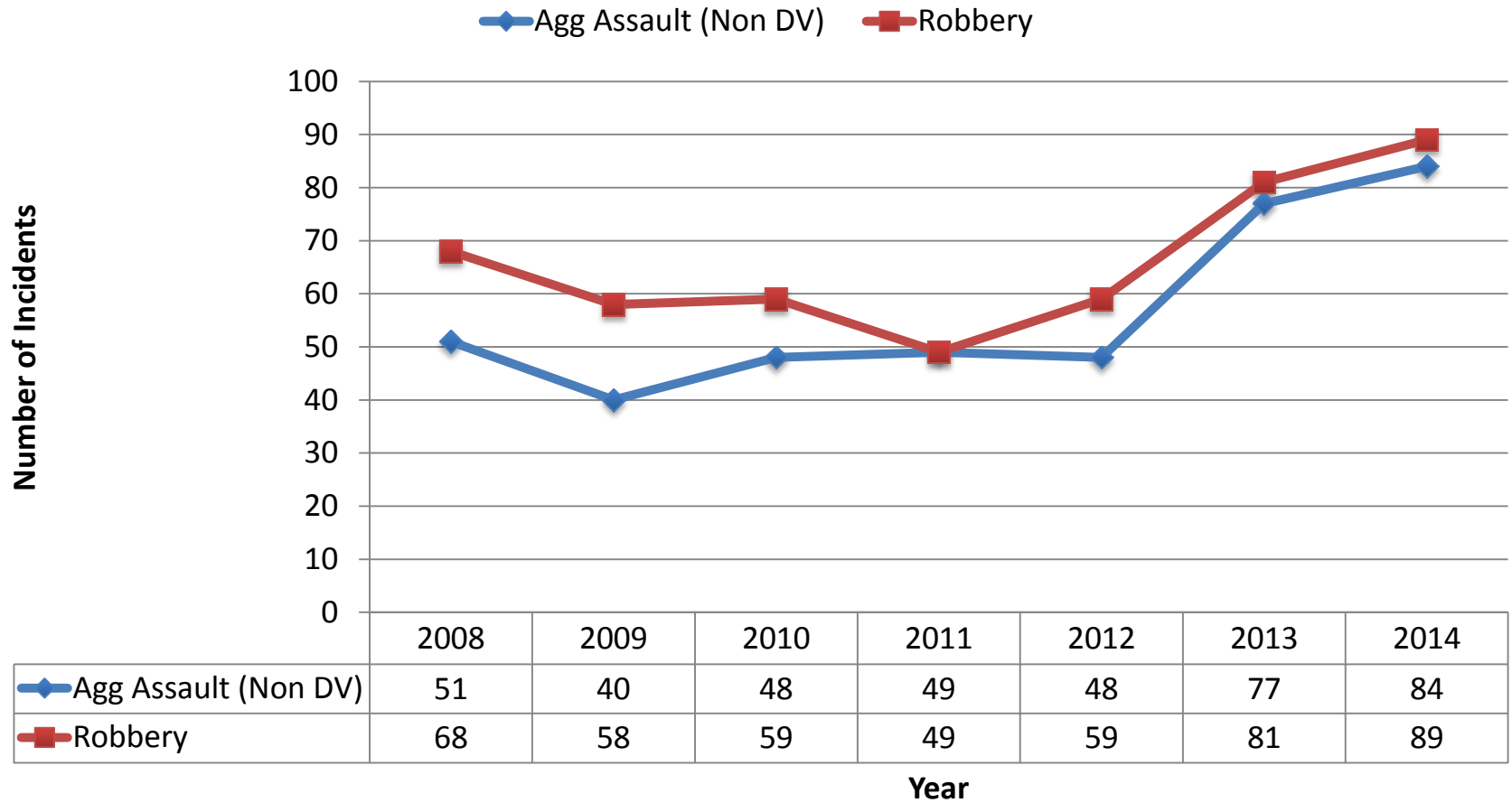


East Precinct Street Robbery and Non DV Aggravated Assault from January to August 2014 for Beat E1, E2, & C2



East Precinct

Non DV Aggravated Assault and Robbery for Beat E1, E2, & C2
January to August (2008-2014)



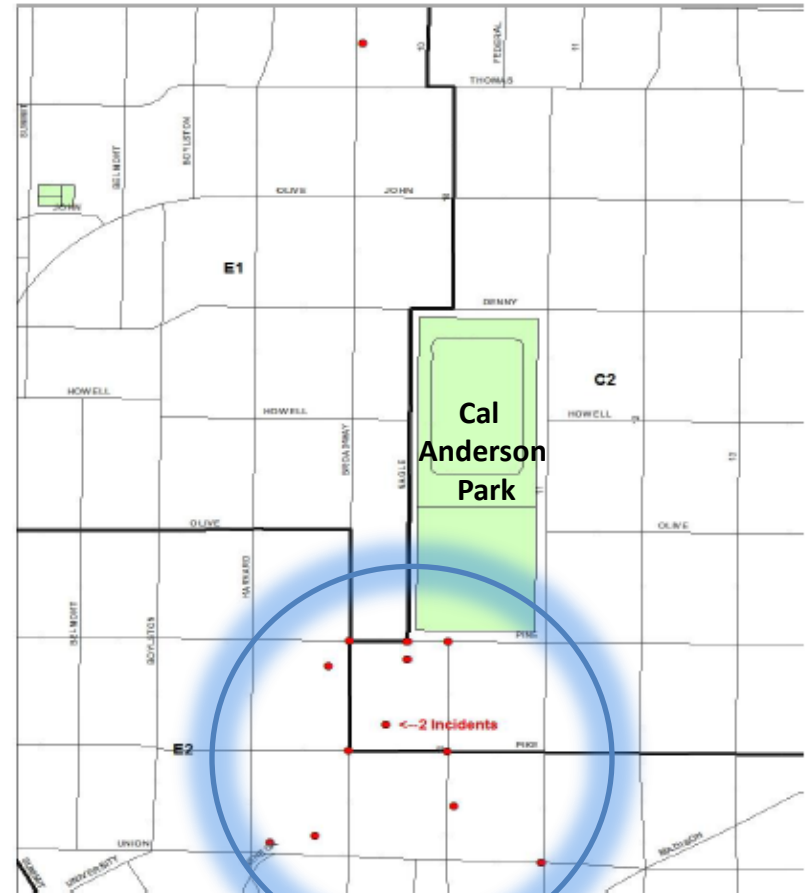
East Precinct Robbery Pattern (Pike, Pine, Broadway, & Union)

Number of Reports: 14

Time Range: 2125-0400 but most commonly
between 0000-0300

Most Common Suspect Description: B/M's in their late teens or twenties. Listed below are possible suspects. There is NO PC for any of these suspects at this time.

Original Robbery bulletin published on 8/12/14. Since 8/1/14 there have been 27 robberies in this area. This bulletin includes only those the Robbery unit has designated as part of the pattern



South Precinct Robbery Follow-up

INCIDENT OVERVIEW

Total Number of Incidents: **176**
 (Four DV incidents were excluded from this analysis.)

Offense Breakdown

Robbery-Street-Bodyforce: 131
 Robbery-Street-Gun: 26
 Robbery-Street-Weapon: 19

Beat Breakdown

Beat	Day of Week	Count
O1: 10	Sunday:	16
O2: 9	Monday:	28
O3: 4	Tuesday:	25
R1: 18	Wednesday:	36
R2: 21	Thursday:	22
R3: 13	Friday:	30
S1: 29	Saturday:	19
S2: 44		
S3: 28		

Time of Day

Between 2300 and 1159, the number of incidents per hour ranged from zero to six. Between 1200 and 2259, the number of incidents per hour ranged from nine to 18.

