

NOV 22 2023



RAINIER COMMUNITY CENTER PLAY AREA



Preferred Concept Design



CITY OF SEATTLE
SEATTLE PARKS AND RECREATION
Pam Kliment, Jordan Hoy, Jay Rood

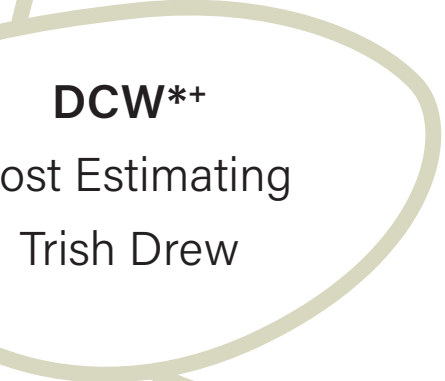
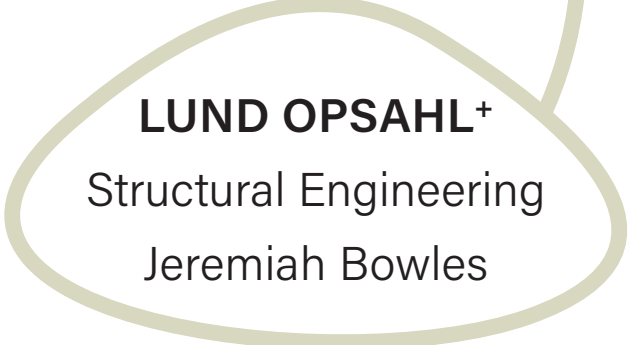
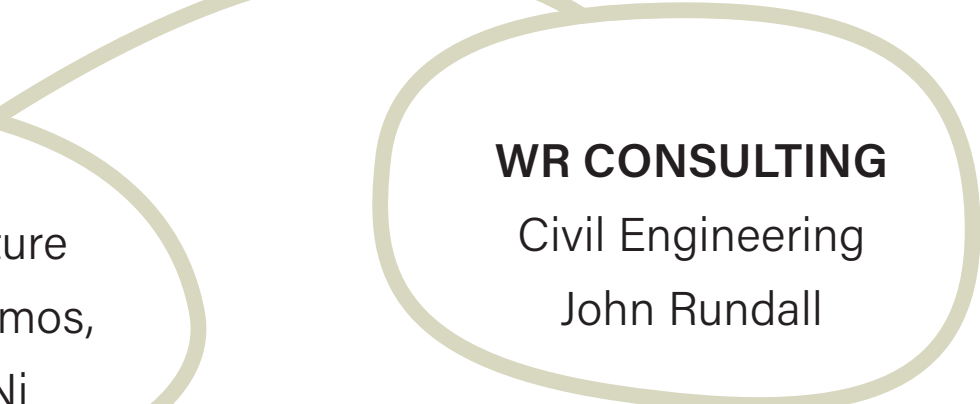
ABLE**
Landscape Architecture
Ashley Ludwig, Ari Vamos,
Becky Klein, Jean Ni

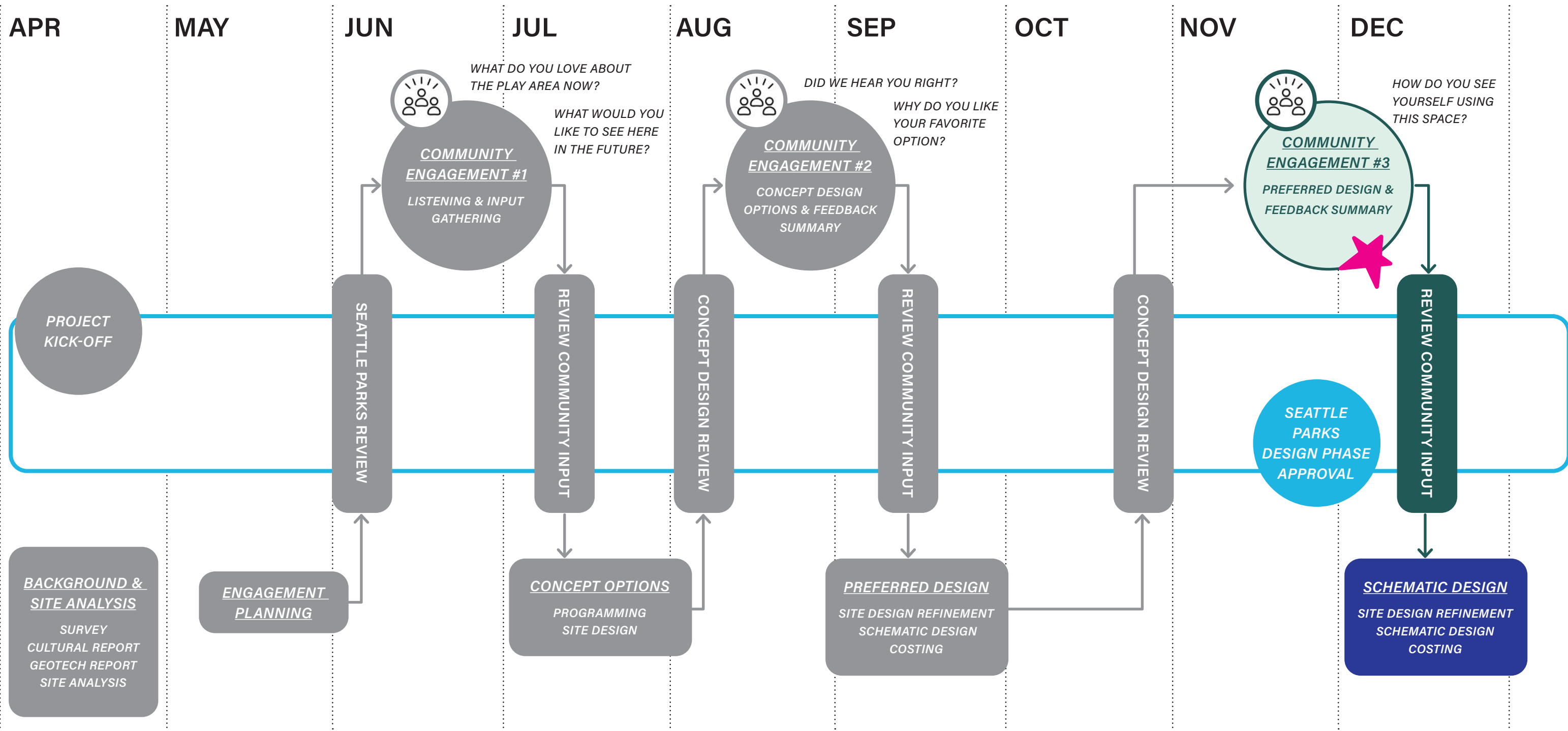
WR CONSULTING
Civil Engineering
John Rundall

LUND OPSAHL+
Structural Engineering
Jeremiah Bowles

DCW**
Cost Estimating
Trish Drew

DAVEY
RESOURCE GROUP
Arborist
Ian Scott





DD: DEC - FEB 2024
 CDS: FEB - SEPT 2024
 BID: SEPT - DEC 2024
 BUILD: 2025



LAKE WASHINGTON BLVD



43RD AVE S



GENESEE PLAYFIELDS



S ALASKA ST



RAINIER PLAYFIELD

38TH AVE S

CASCADIA AVE S

S GENESEE ST

RAINIER AVE S

RCC PLAY AREA



COMMUNITY CENTER

ACCESSIBILITY STUDY AREA

PLAY AREA

S CONOVER ST

38TH AVE S

VEHICULAR DRIVE

PARKING

PROJECT SITE

PICNIC SHELTER

5-12 STRUCTURE

SAND

SWINGS

SPRINGERS

2-5 STRUCTURE

PICNIC TABLES

FIELD

COMMUNITY GARDEN

HILLSIDE

S ALASKA ST

'BIKE LOOP'

PARKING

PROJECT GOALS:

- Replace play equipment & play surfacing
- Make site more accessible
- Find better location for sand play
- Consider new picnic shelter
- Provide an accessible path to the community garden

CONSIDERATIONS:

- Project is located on a capped landfill



ROUND 2 ENGAGEMENT EVENTS

Through two in-person engagement events and an online survey, we showed our concept designs to the neighborhood. We heard from kids and families about which elements they were excited about, what they liked and didn't like about the options, and what we should prioritize in the final design.

BIG DAY OF PLAY | 8/19



50+ PEOPLE ENGAGED

RAINIER COMMUNITY CENTER MEETING | 8/23

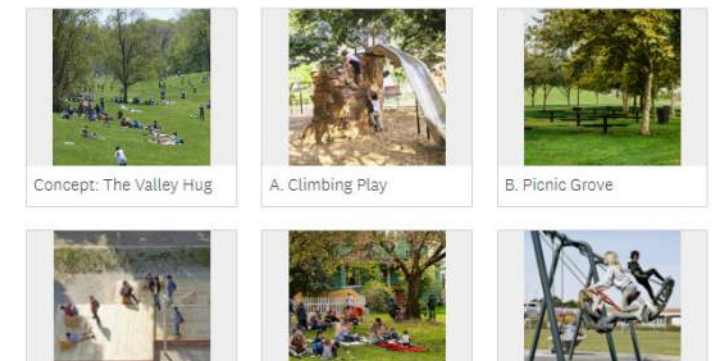


30+ ATTENDEES

ONLINE SURVEY



5. Which elements are your favorites? (Check as many as you want!)



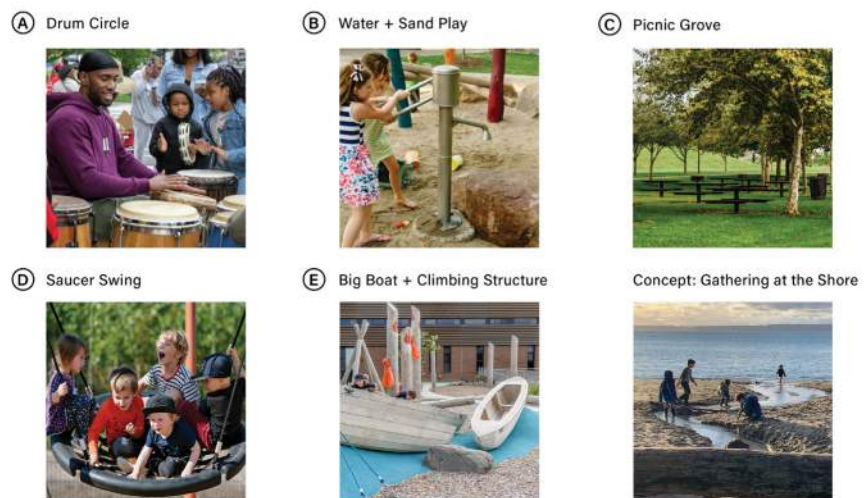
35 RESPONSES

ENGAGEMENT EVENT BOARDS

OPTION 1: GATHERING AT THE SHORE

This design draws on the site's history as a former slough that fed into Lake Washington. In this option, we wanted to create a "shore" as a place to play and gather.

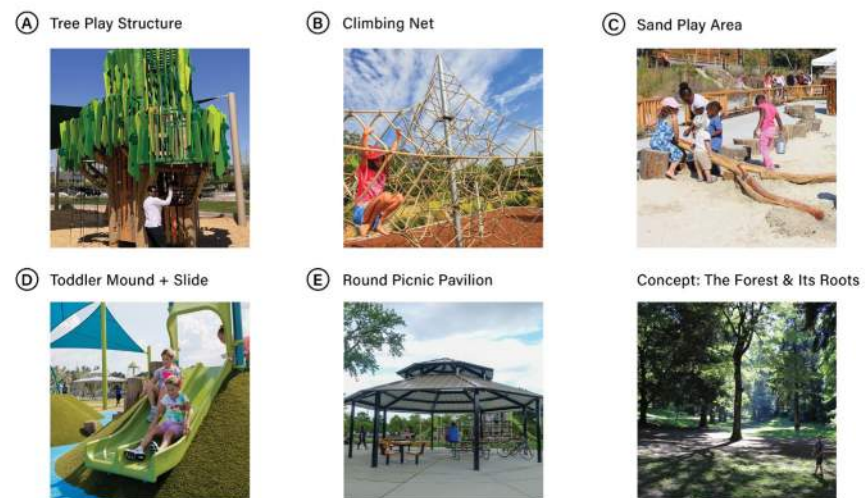
- Key features:**
- Water-themed play elements
 - Large central play area
 - Spaces around the edge to sit, gather, and enjoy community events



OPTION 2: THE FOREST & ITS ROOTS

This design draws on the play area's shady trees and the historic forests of Columbia City. In this option, we wanted to create the feeling of exploring a forest.

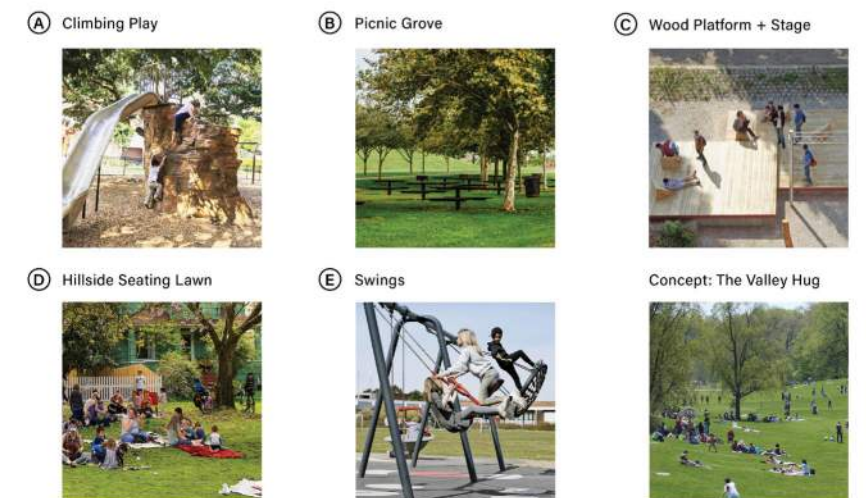
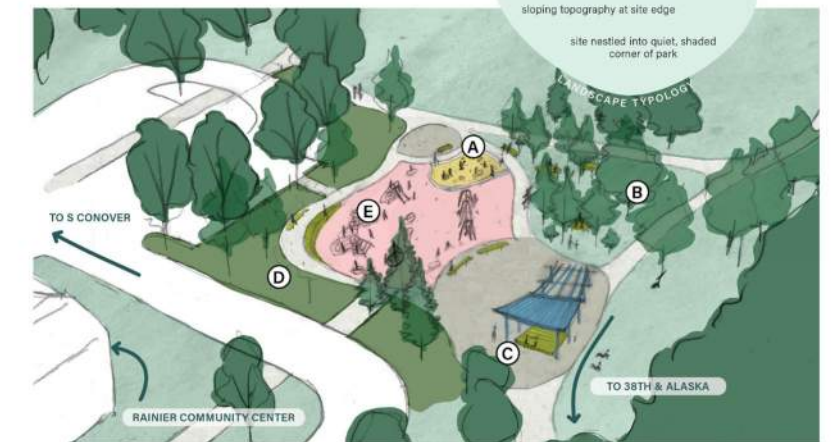
- Key features:**
- Forest-themed play elements
 - Smaller "play pockets" sheltered by trees with seat walls for guardians
 - Central picnic shelter with views into the play areas



OPTION 3: THE VALLEY HUG

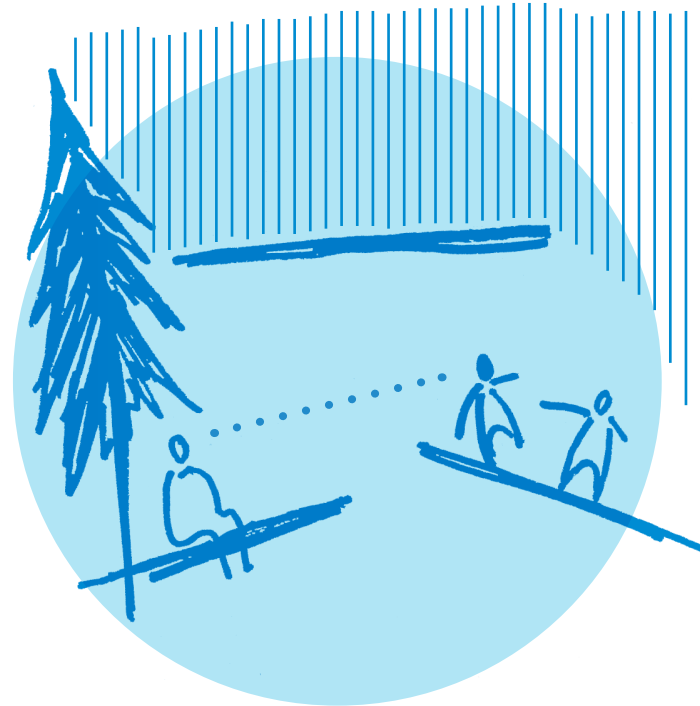
This design draws on Genesee Park's name, which comes from the Seneca word for "beautiful valley." In this option, we wanted to create a valley of play that feels sheltered and cozy.

- Key features:**
- Adventurous climbing + swinging play
 - Central play area "hugged" by trees and planting
 - Double-sided pavilion with seating on the hill



A DAY AT RAINIER COMMUNITY CENTER PLAY AREA SHOULD BE....

COMFORTABLE



- PROVIDE **ACCESSIBLE + CLIMATE RESILIENT** AMENITIES
- **SHADE + SHELTER** PARK-GOERS FROM SUN + RAIN
- ENSURE SAFETY WITH CLEAR **BOUNDARIES + SIGHT LINES**

IMMERSIVE



- PROVIDE **VARIED PLAY** OPTIONS FOR ALL AGES
- SPARK **INDEPENDENT, IMAGINATIVE, + CREATIVE PLAY**
- DRAW IN THE **LOCAL LANDSCAPE CONTEXT**

CONNECTED



- CREATE **MULTIFUNCTIONAL GATHERING SPACES** AT DIFFERENT SCALES
- CREATE A **DISTINCTIVE + EXCITING IDENTITY**



FREE FORM CLIMBING, SPANNING A BRIDGE, CREATING **MAKE BELIEVE** ENVIRONMENTS.

PLEASE CONSIDER USING ELEMENTS OF **UNIVERSAL DESIGN**... RAINIER COMMUNITY REALLY NEEDS SOMEWHERE LIKE THIS FOR OUR CHILDREN WITH DISABILITIES.

INVOLVE **THE WHOLE FAMILY** AND ENCOURAGE PEOPLE TO STAY LONGER THAN JUST THE PLAYGROUND

I REALLY LIKE THE CONCEPT OF COMBINING **PLAY AND NATURE** TOGETHER

VISIBILITY IS IMPORTANT, SEEING KIDS FROM ONE VANTAGE POINT

LOTS OF COOL **COMMUNITY BUILDING** OPTIONS

GIVEN THE PERSISTENCE OF GLOBAL WARMING AND WARMER TEMPERATURES, HAVING A **WATER FEATURE** WOULD BE GREAT

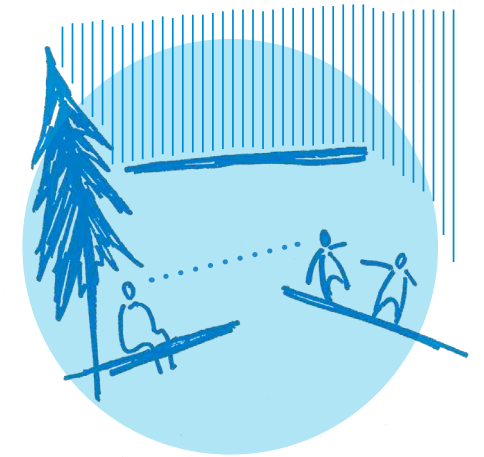
ALLOW CHILDREN TO **PLAY INDEPENDENTLY**

THIS PLAYGROUND WOULD BENEFIT FROM **MORE TOPOGRAPHY AND SHADE.**

FENCES AROUND PLAYGROUNDS, PLEASE!! IT IS SO **UNSAFE AND VERY STRESSFUL** TO WATCH KIDS PLAY WITH BUSY STREETS + CARS SO CLOSE.

BRINGING COMMUNITY TOGETHER...A NICE PLACE FOR FOLKS TO **GATHER PEACEFULLY.**

COMFORTABLE



IMMERSIVE



CONNECTED



WHAT ELSE IS NEEDED HERE?

FAVORITE ELEMENTS



WATER AND SAND



TREE CLIMBING



CLIMBING NET



SAND AREA



BIG BOAT



MOUND + SLIDE



ROCK CLIMBING



SWINGS

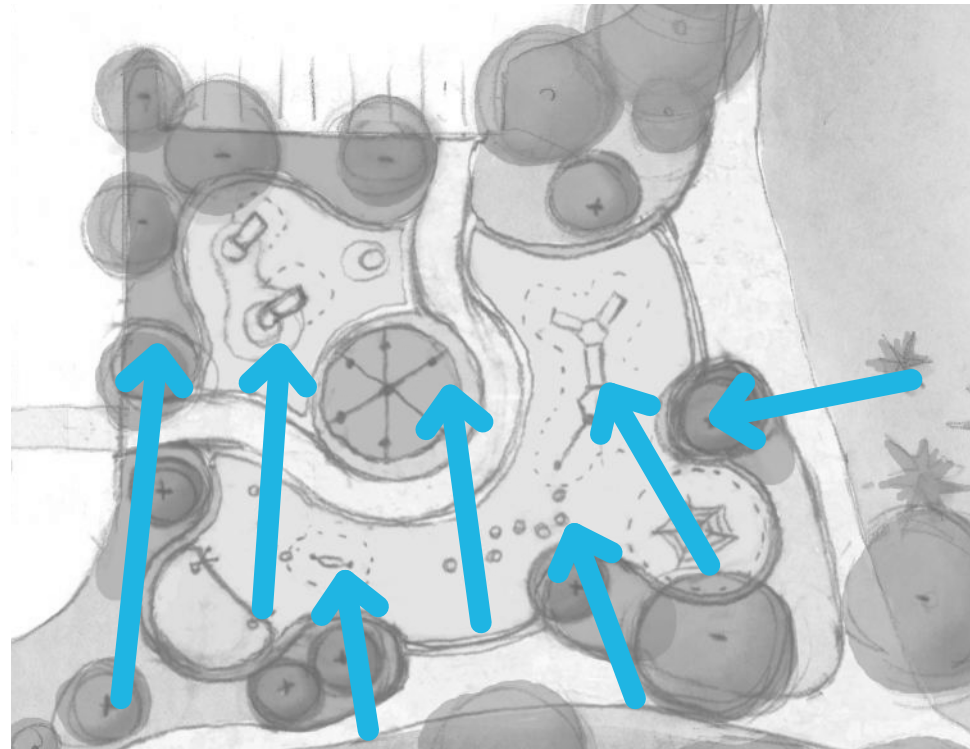
WE TOOK THE BEST PARTS OF EACH OPTION:

GATHER AT THE SHORE



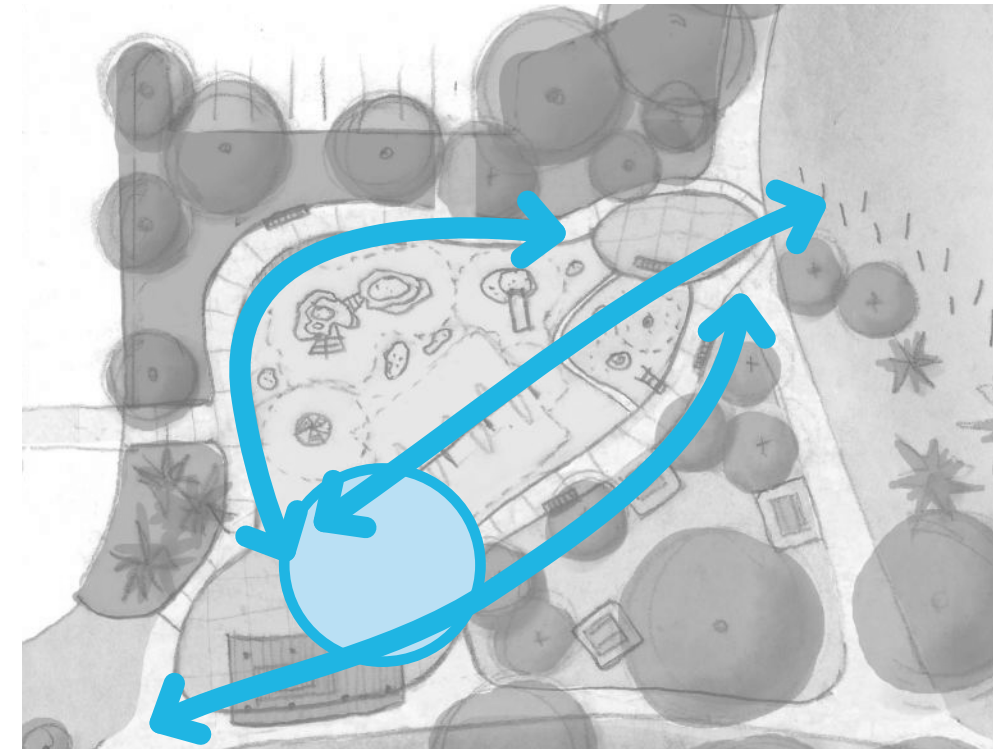
- Large cohesive play in the middle bordered by paths, seating, and planting
- Move little kid play away from vehicles

THE FOREST & ITS ROOTS



- Forest-themed play and trees in closer proximity

THE VALLEY HUG



- Orient views toward field & hillside
- Move picnic shelter on south side of play area

FOREST MEETS THE SHORE

*stqucid (choked up mouth) and stSavKátSeed (cooking fish on a stick)
- Lushootseed nameplace for what would become Wetmore Slough*

“Wetmore Slough, from Genesee Street, was a swamp. It was full of big water willows and it always had water in there, summer and winter... When I was a boy, when you left Genesee Street that was a lake...it was deep enough water that a tug could get in there”

(Columbia City resident John Parker in his oral history collected by RVHS in the 1990s)



SITE HISTORY

historic wetland
Indigenous placenames
hunting + fishing + gathering at water's edge
diverse cultures gathering in Columbia City

FOREST MEETS THE SHORE

site nestled into quiet, protected corner of park
beloved existing trees
flat zone for water to meander

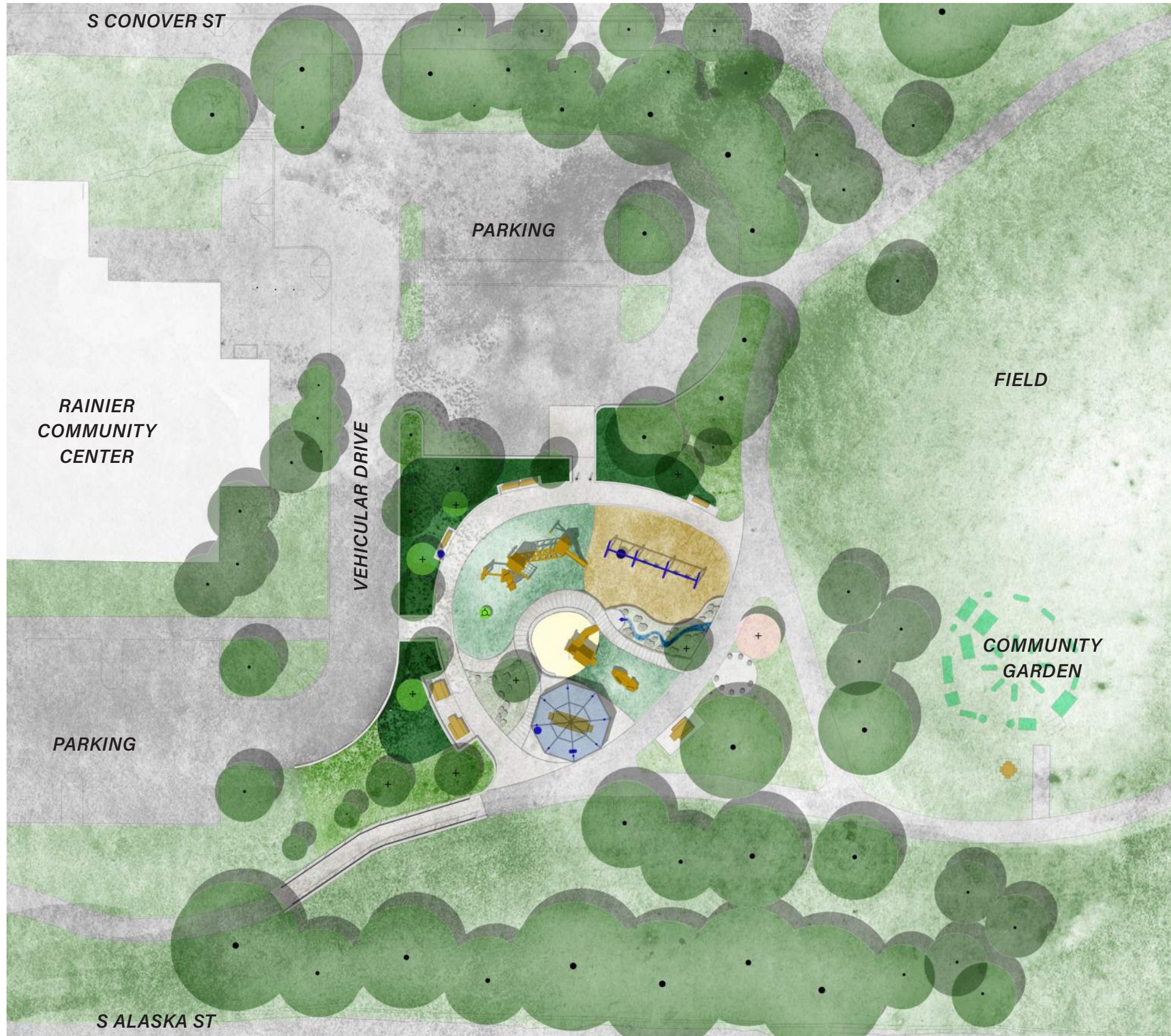
LANDSCAPE TYPOLOGY

COMMUNITY ENGAGEMENT

water-based play
sense of discovery + exploration
sense of comfort + shelter
space to gather
more shade
sand area



SCALE: 1" = 40' 0 10 20 40 80 FEET

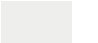









THE FOREST MEETS THE SHORE

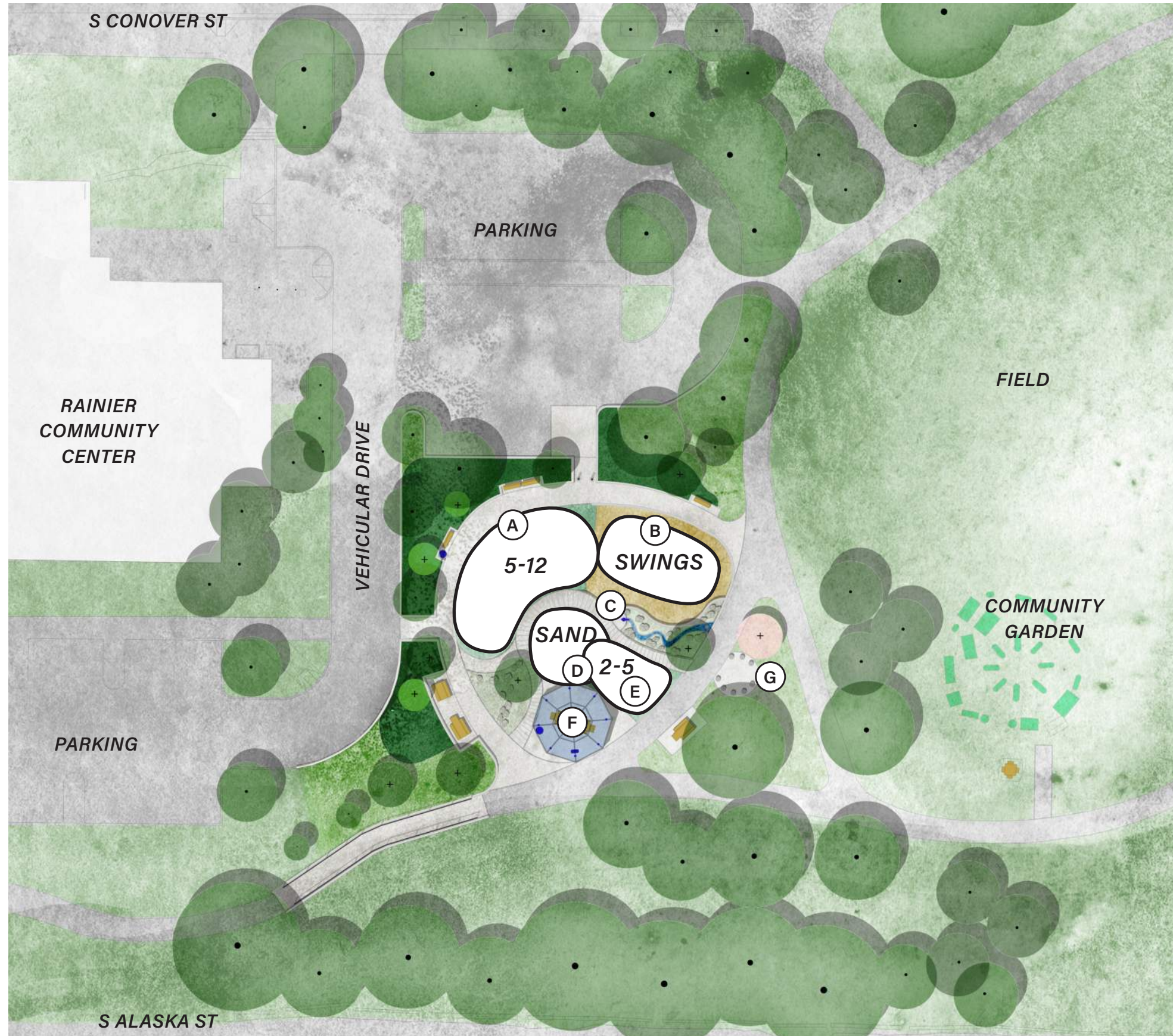
KEY PROPOSED FEATURES:

- PICNIC SHELTER W/ TABLES & DRINKING FOUNTAIN
- SWINGS
- 5-12 YR OLD PLAY EQUIPMENT
- 2-5 YR OLD SAND STRUCTURE
- 2-5 YR OLD BOAT
- WATER PLAY PUMP & ROCKY CREEK
- READING / DRUM CIRCLE
- SEATING ALONG AN ACCESSIBLE PATH
- ACCESSIBLE PARKING SPOT

LEGEND

-  Concrete or Asphalt
-  Play Safety Surfacing
-  Sand
-  EWF
-  Aggregate
-  Lawn
-  Planting
-  Furnishing, etc.

SCALE: 1" = 40' 0 10 20 40 80 FEET



THE FOREST MEETS THE SHORE

- (A) LARGE CLIMBING STRUCTURE**
 5-12 YRS | 25 USERS
 CLIMB | SLIDE | UPPER BODY | EXPLORE | BALANCE
- (B) SWINGS (4 SEATS + NEST)**
 2+ YRS | 7+ USERS
 SWING | BALANCE | SENSORY | SOCIAL | JUMP
- (C) ROCKY CREEK**
 2+ YRS | 15 USERS
 SPLASH | EXPLORE | IMAGINE | BALANCE
- (D) SAND STATION**
 2-5 YRS | 16 USERS
 CLIMB | CONSTRUCT | PULL | SENSORY | SOCIAL
- (E) BOAT**
 2-5 YRS | 10 USERS
 BALANCE | IMAGINE | SENSORY | CLIMB
- (F) PICNIC SHELTER**
 ALL AGES | 18 USERS
 RELAX | EAT | GATHER
- (G) READING CIRCLE**
 ALL AGES | 10 USERS
 RELAX | GATHER | LEARN

SEATING & TABLES

TREES & PLANTING

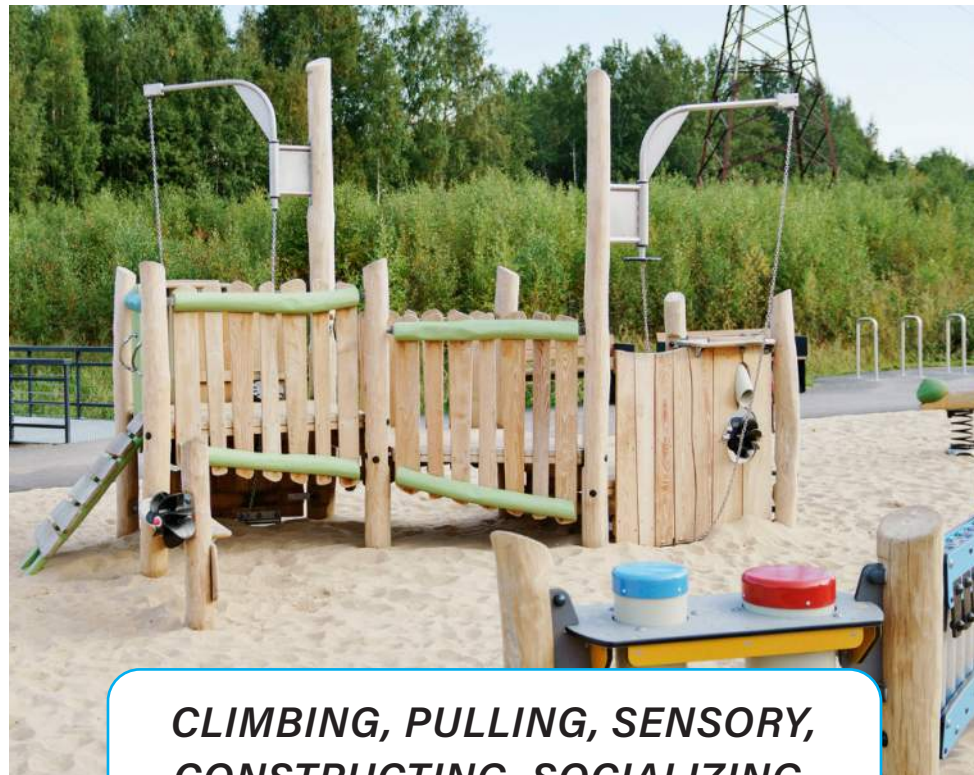
PLAY VARIETY



**BALANCING, SWINGING, HANGING,
SENSORY, SOCIALIZING**



**BALANCING, SLIDING, CLIMBING,
SWINGING, PULLING, HANGING,
SENSORY, SOCIALIZING**



**CLIMBING, PULLING, SENSORY,
CONSTRUCTING, SOCIALIZING,
WONDERING**

**CLIMBING, DRAMATIC PLAYING,
SENSORY, SOCIALIZING**



**BALANCING, HANGING,
PULLING, PUSHING,
SPINNING, SENSORY,
SOCIALIZING**

TO 38TH & ALASKA

TO COMMUNITY CENTER

TO CONOVER ST



SWINGS (2+ YRS OLD)

KOMPAN SWING SET

2+ YRS | 11 USERS

8' HIGH

1 NEST SWING & 4 STANDARD SWINGS

OPTIONS FOR BUCKET & ACCESSIBLE SWINGS



PLAY EQUIPMENT (5-12 YRS OLD)

KOMPAN CLIMBING STRUCTURE

5-12 YRS | 25 USERS

9'-10" MAX FALL HEIGHT

** CUSTOMIZING **

KOMPAN TIPI SPINNER

5-12 YRS | 8 USERS

3'-3" MAX FALL HEIGHT



PLAY EQUIPMENT (5-12 YRS OLD)

LSI TOWER ALTERNATIVE

5-12 YRS | 25 USERS

10'-0" MAX FALL HEIGHT

LSI CURVA SPINNER

5-12 YRS | 5 USERS

9" MAX FALL HEIGHT



PLAY EQUIPMENT (2-5 YRS OLD)

KOMPAN SAND STRUCTURE

2-5 YRS | 16 USERS

2'-11" MAX FALL HEIGHT

MODIFIED FOR ACCESSIBILITY

KOMPAN OASIS BOAT

2-5 YRS | 8 USERS

3'-3" MAX FALL HEIGHT

MODIFIED FOR ACCESSIBILITY



PLAY EQUIPMENT (2+ YRS OLD)

WATER PUMP

2-5 YRS | 3 USERS

ACCESSIBLE



PICNIC SHELTER

POLIGON STRUCTURE

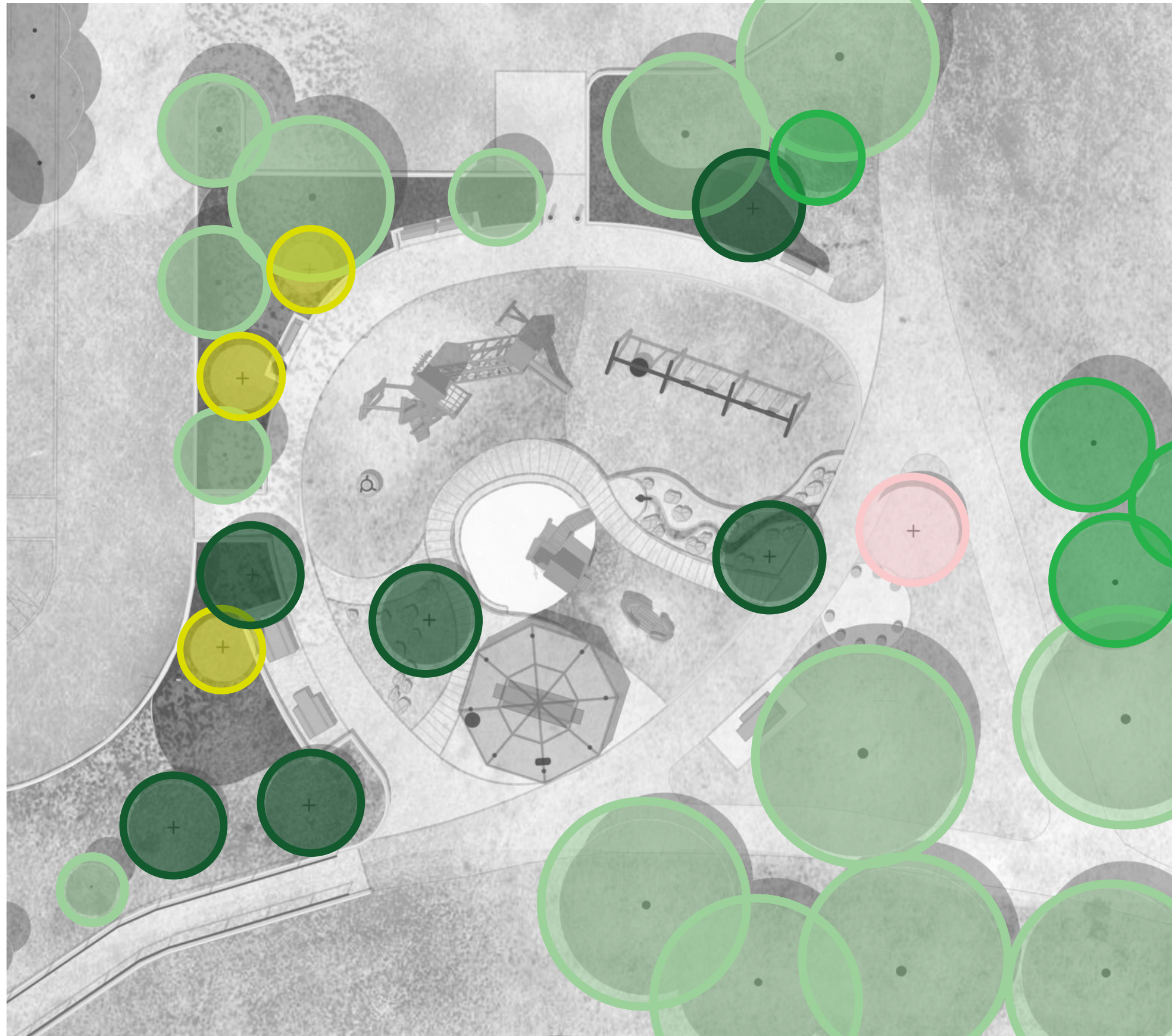
28' ACROSS

ROOM FOR 2 ACCESSIBLE PICNIC TABLES, TRASH RECEPTACLE, & DRINKING FOUNTAIN

COLOR OPTIONS



SCALE: 1" = 20' 0 5 10 20 40 FEET



EVERGREEN TREES

Considering 2-3 species of the following:

- CALOCEDRUS DECURRENS** Incense cedar
- PINUS PONDEROSA** Ponderosa pine
- PSEUDOTSUGA MENZIESII** Doug fir
- SEQUOIA SEMPERVIRENS 'APTOS BLUE'** Coastal Redwood
- THUJA PLICATA** Western redcedar



DECIDUOUS TREES

Considering the following:

- ACER CIRCINATUM** Vine maple
- AMELANCHIER ALNIFOLIA** Serviceberry
- PRUNUS SP** Cherry



EXISTING EVERGREEN TREES

- ARBUTUS UNEDO** Strawberry tree
- PINUS CONTORTA VAR. LATIFOLIA** Lodgepole pine
- PINUS SYLVESTRIS** Scots pine
- PSEUDOTSUGA MENZIESII** Doug fir
- THUJA PLICATA** Western redcedar



EXISTING DECIDUOUS TREES

- LIQUIDAMBAR STYRACIFLUA** Sweetgum
- QUERCUS GARRYANA** Oregon white oak
- QUERCUS RUBRA** Northern red oak





HOW WOULD YOU USE THIS SPACE?

WE'D LIKE TO HEAR FROM YOU!

PLEASE EMAIL PAMELA.KLIMENT@SEATTLE.GOV



<https://www.seattle.gov/parks/about-us/projects/rainier-community-center-play-area-playground-renovation>