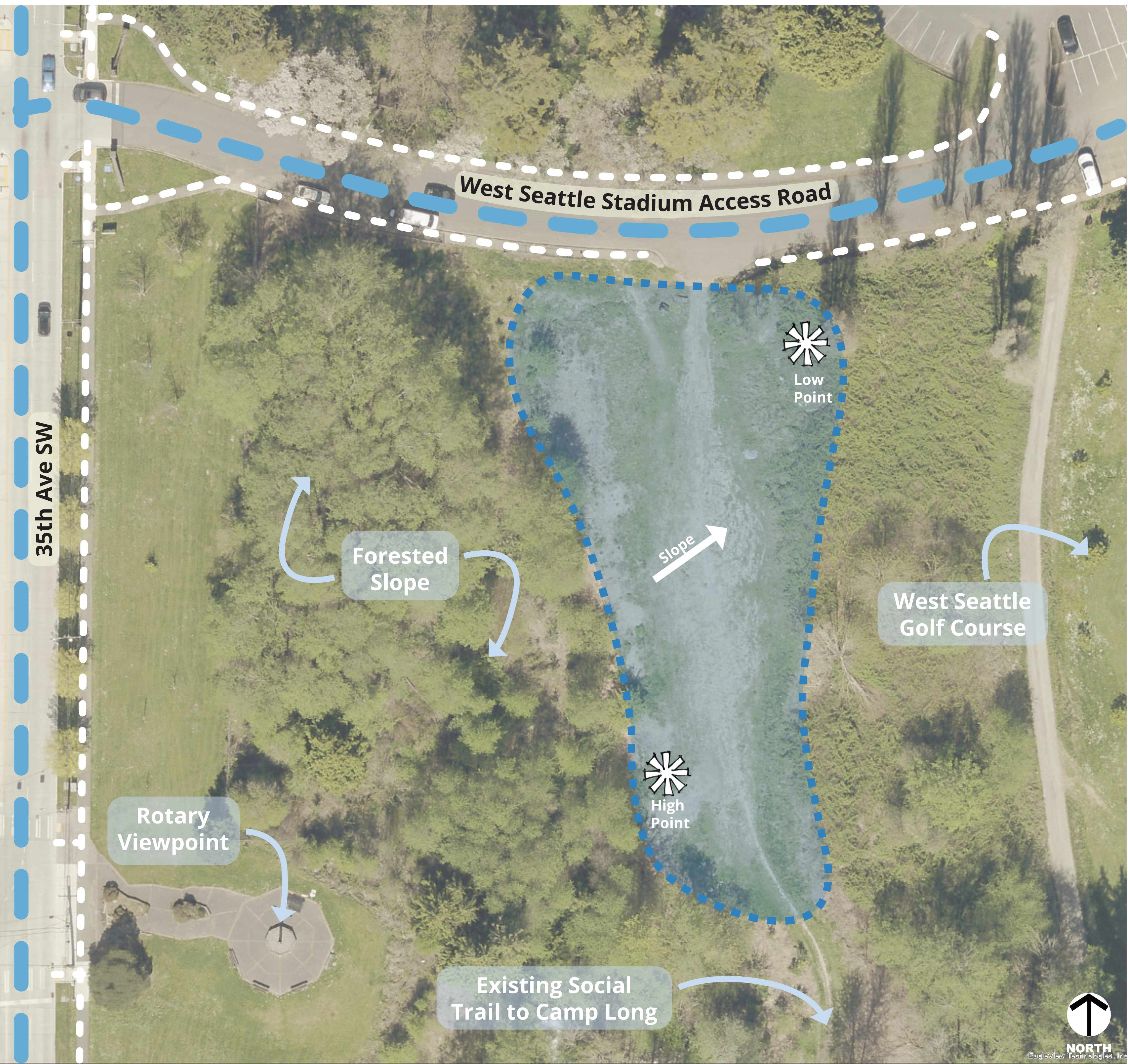




# Site Overview



Where would you prefer to access the site? Use a sticker!

Do you prefer to have small/shy dog areas or one large open space?

Small/Shy Dog Area

One Large Open Space

What kind of human-focused features would you prefer?

Seating

Drinking Fountain

Weather Protection

What time of day would you use this park?

Morning

Afternoon

Evening

**Legend**

- Study Area (approx. 16,000 ft<sup>2</sup>)
- Pedestrian Access
- Vehicle Access

**Vicinity Map**

West Seattle Stadium

West Seattle Golf Course

Study Area



Off-Leash Area



Agility Training



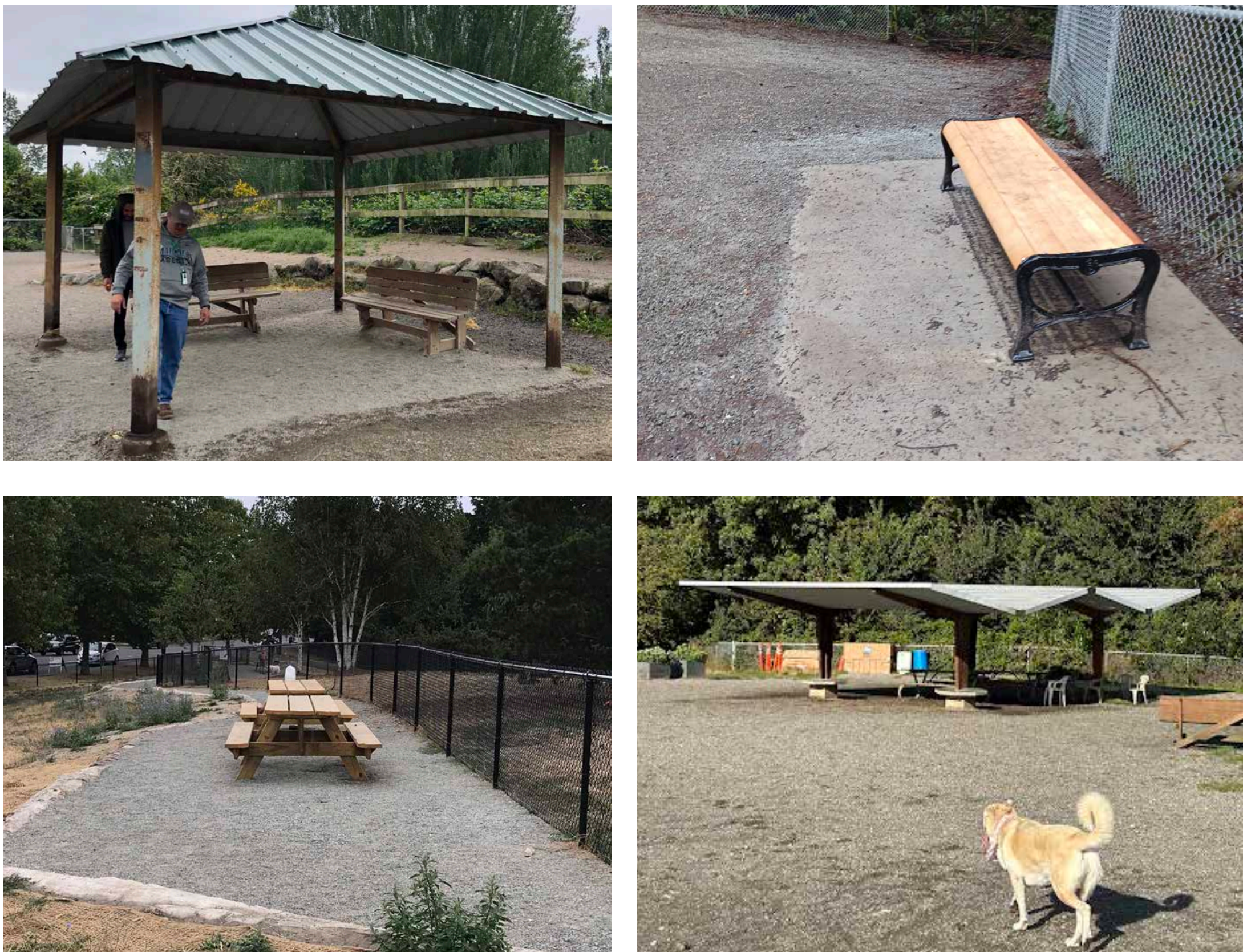
Dog Water Stations



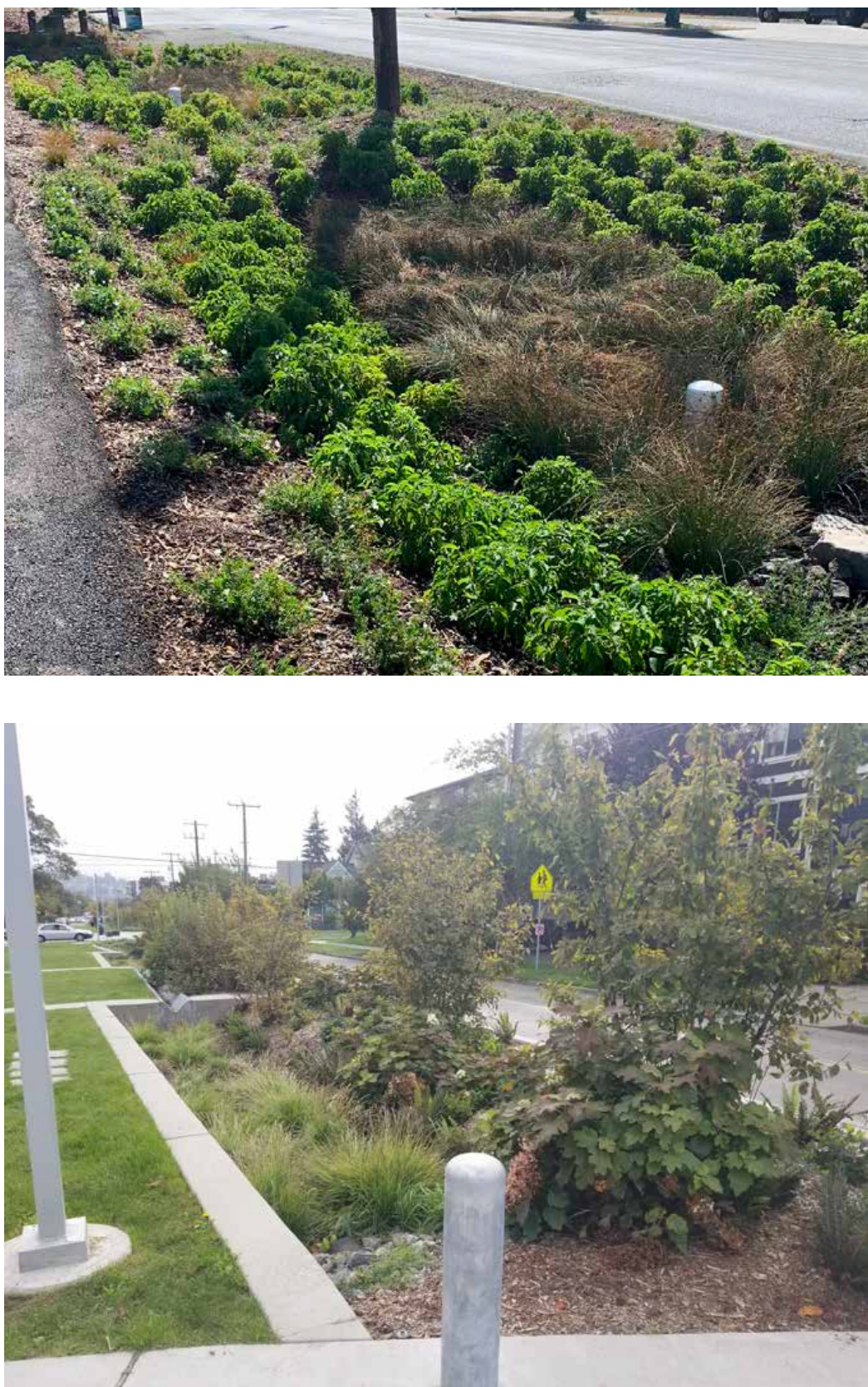
Fence / Gates



Human Accommodation



Bioretention Swale



Art Integration

