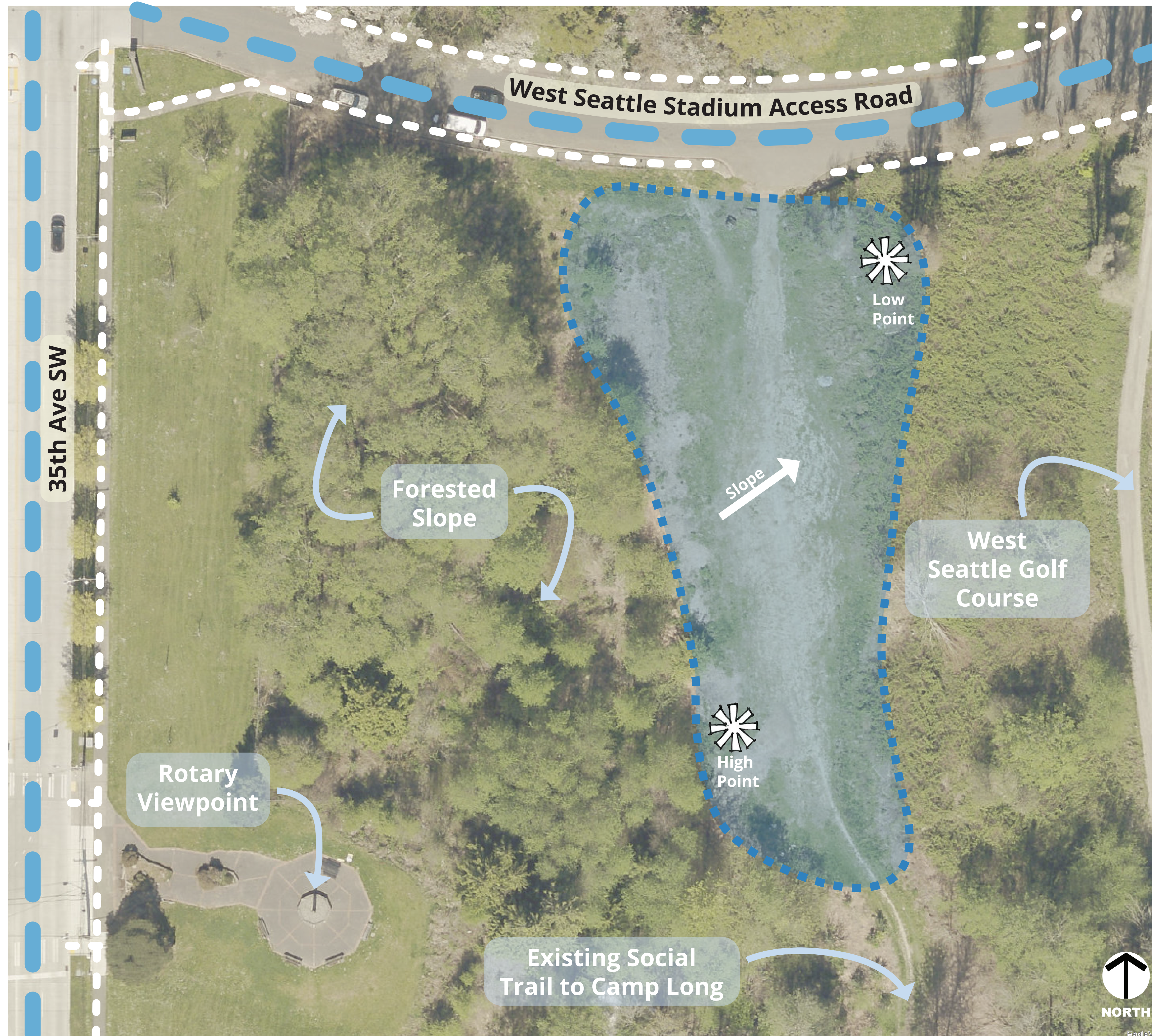


Project Background

Site Location



Initial Feedback

Would Like to See:

- Double gated entries
- Tall, secure fencing
- Drinking water access
- Small / shy dog area
- Increase maintenance – provide trash/recycle bins
- Seating
- Shelter

Community Concerns:

- Drainage / muddy terrain
- Escape proof fencing
- Lighting

Timeline

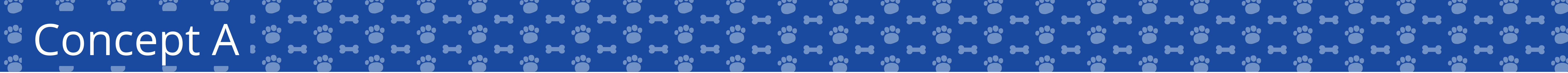
- Planning: Summer 2024
- Design: Spring 2025
- Construction: Spring 2026
- Completion: Fall 2026

Current Site

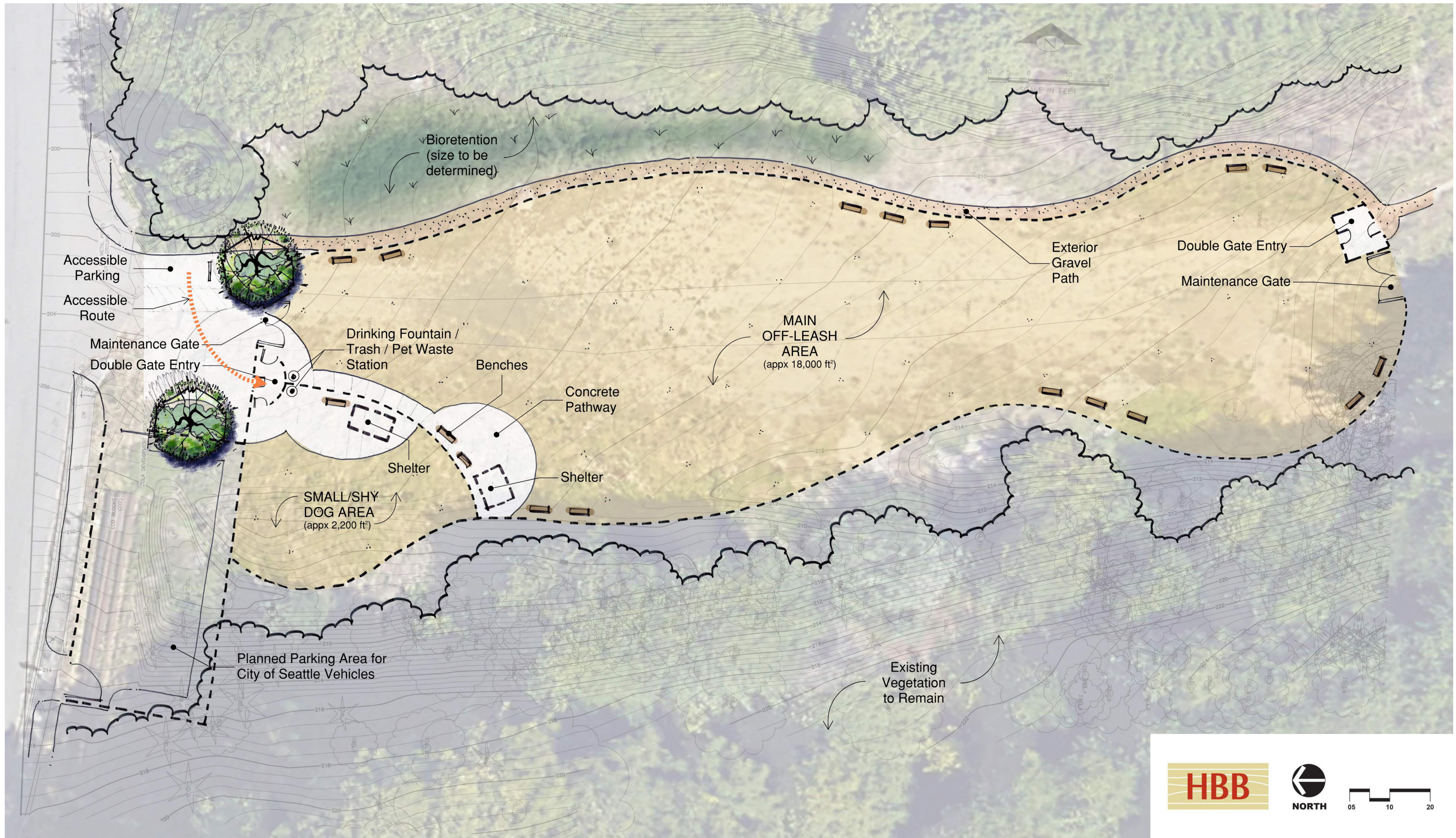


Legend

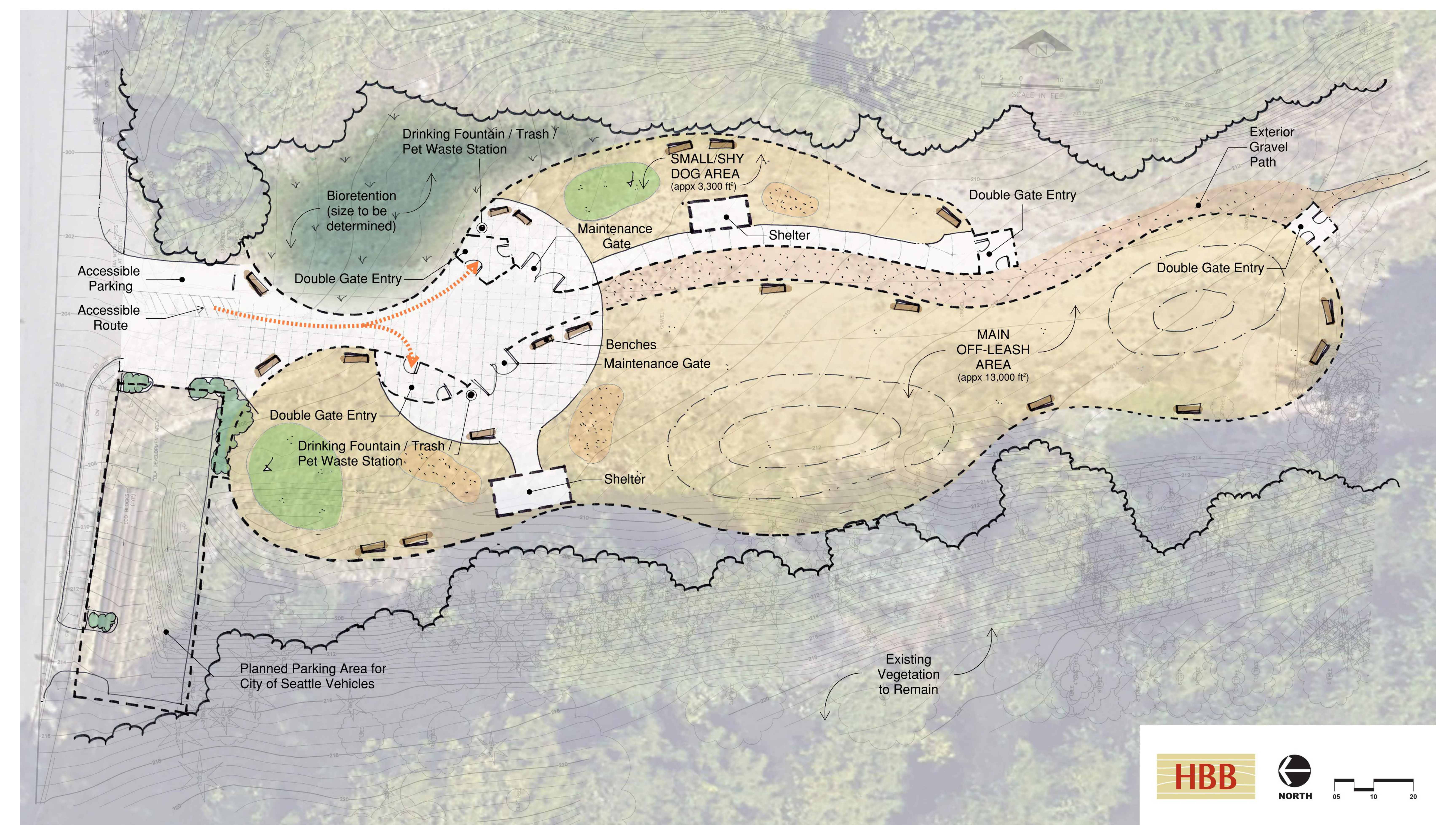
- Study Area (approx. 16,000 ft²)
- Pedestrian Access
- Vehicle Access



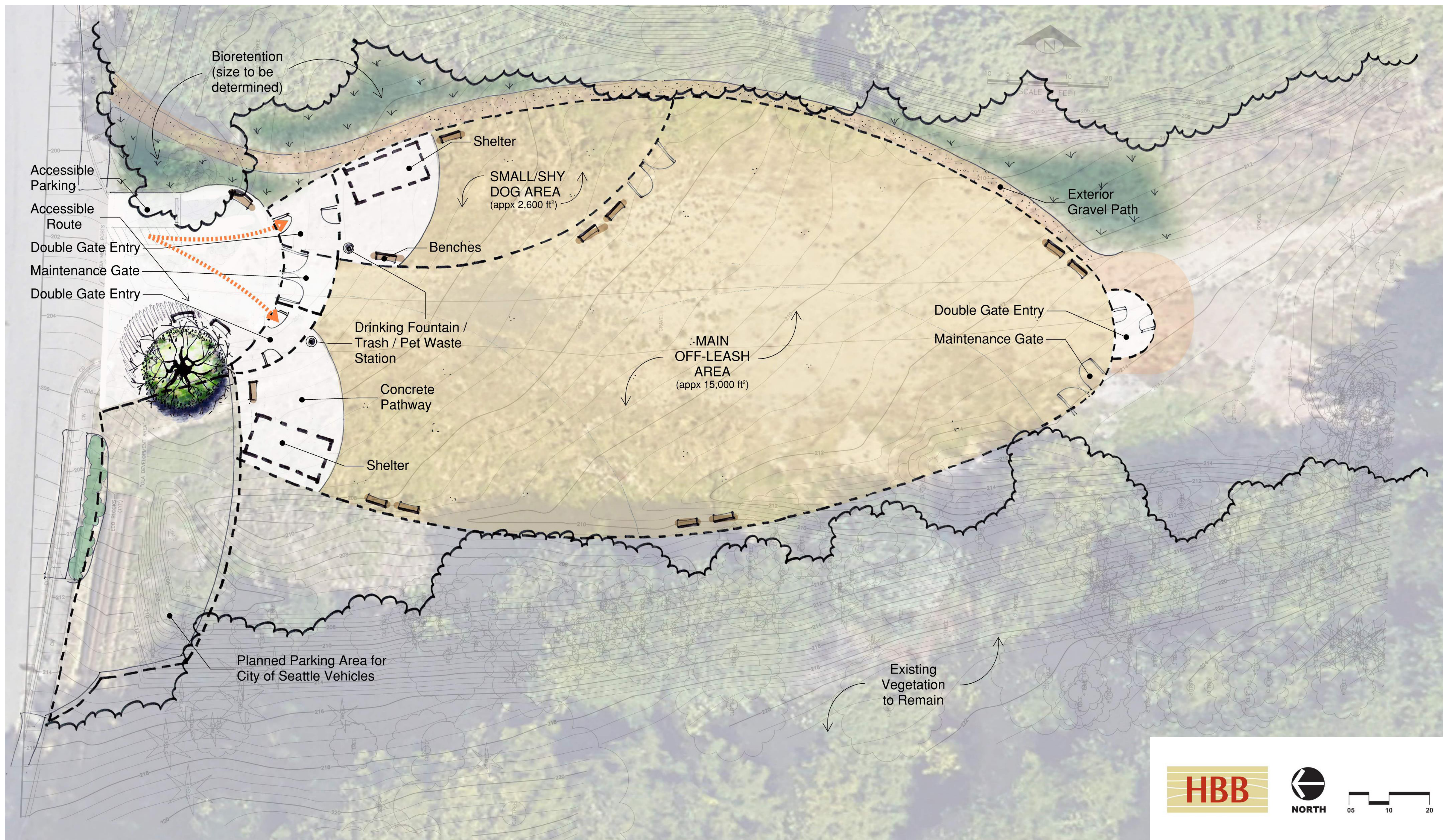
Concept A



Concept B



Concept C



Off-Leash Area



Agility Training



Dog Water Stations



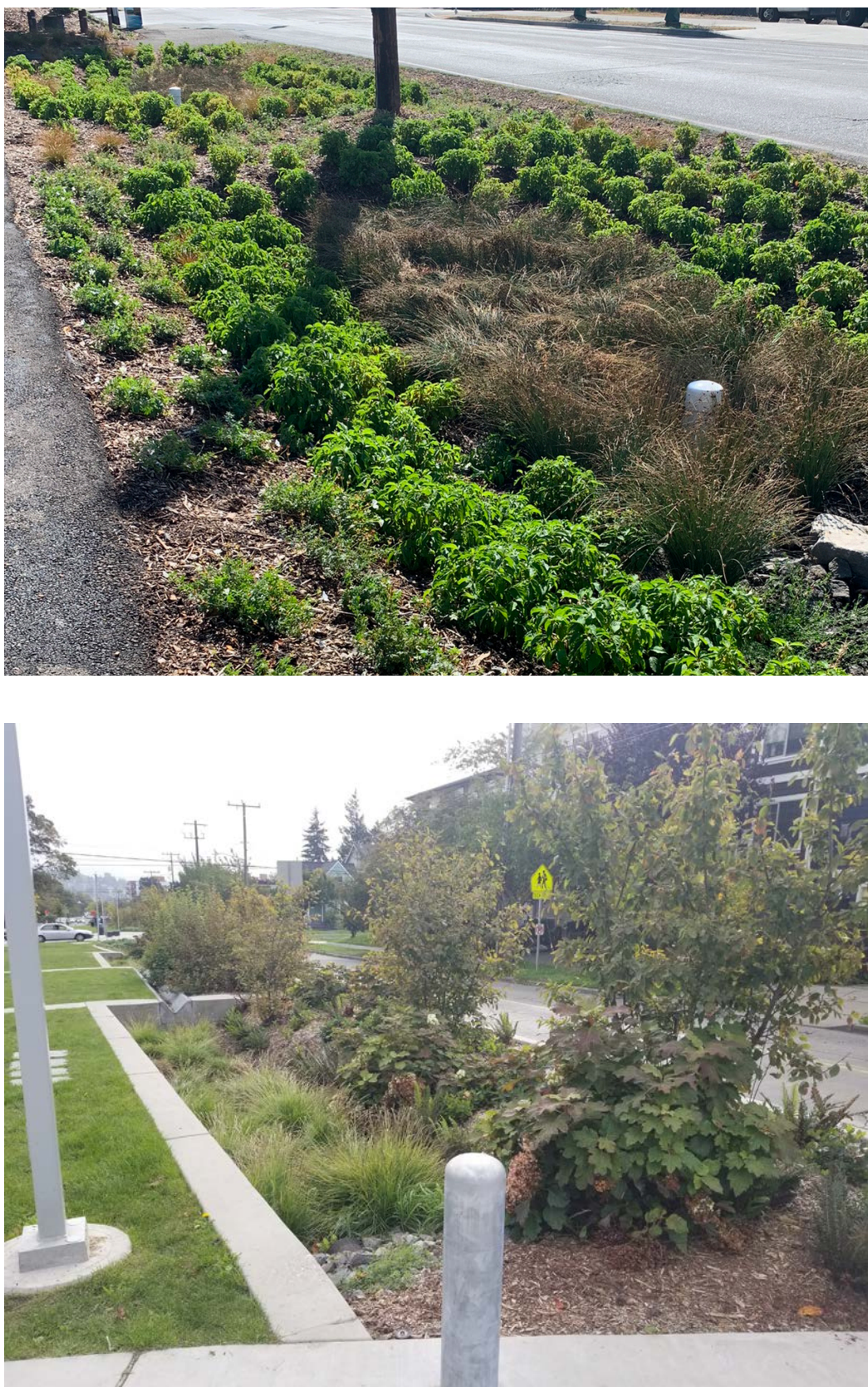
Fence / Gates



Human Accommodation



Bioretention Swale



Art Integration

