

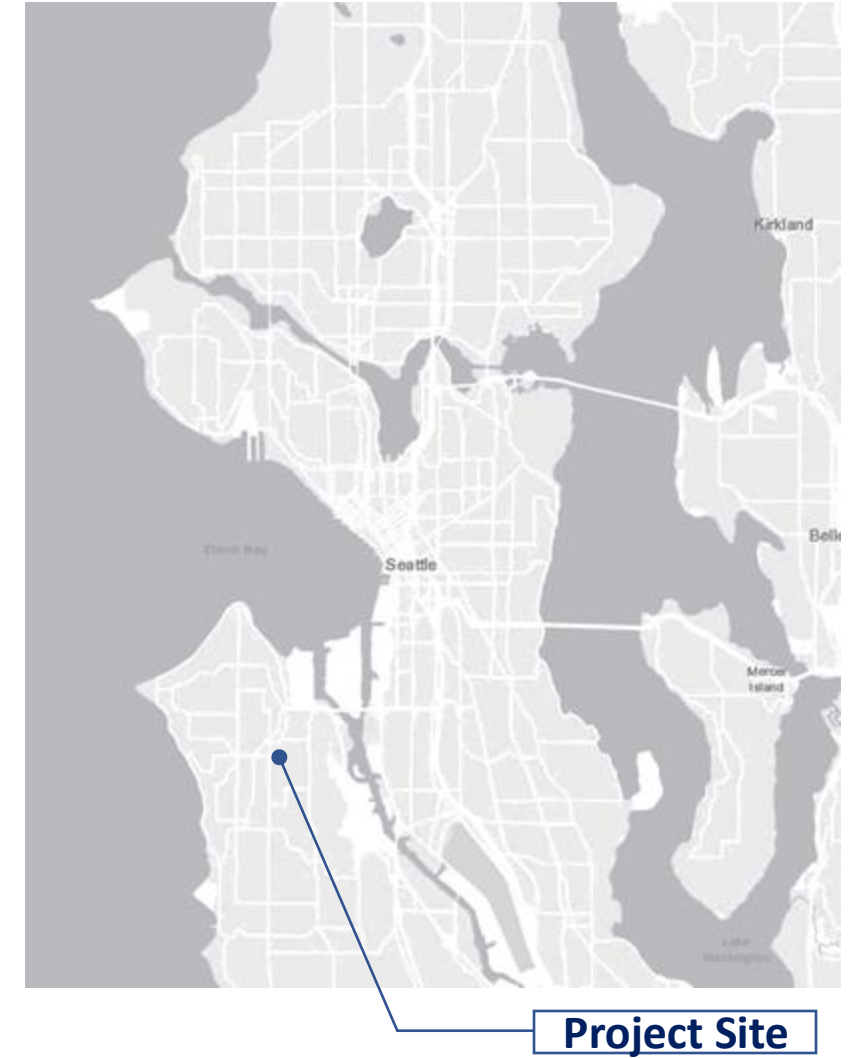
New Off-Leash Area Developments (West Seattle Stadium)



Project Update



Project Review: Location (West Seattle Stadium)



Project Review: Current Site (West Seattle Stadium)



Project Update: Outreach

Outreach by SPR to date:

- Pop Up event #1 (10/23/2025)
- Online survey #1 (11/07/2025)
- Pop Up event #2 (02/23/2025)
- Online survey #2 (03/10/2025)

Would like to see:

- Separation between areas
- Shelters
- Vegetation
- Water access
- Lighting
- Landform / small hills
- Agility equipment

Community Concerns:

- Drainage / muddy terrain
- Escape proof fencing
- Lighting
- Odor
- Signage / Rules

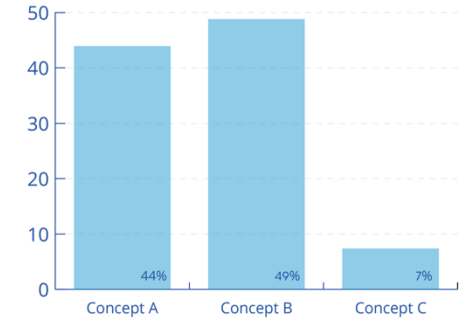
Sample open-ended responses:

- "I like the pathway that lets people walk through the park and how it separates the small and main area."
- "Concept B and C has a nice placement for the small/shy dog area by having it tucked to the side so the dogs don't have to be by the entrance where all the other dogs are passing through."
- "Double gates, fencing, small/shy dog areas, linkage to the social trail, south entrance."
- "Concept b appears to have more topographical change which dogs enjoy."
- "I like that A maximizes the use of the length of the area for dogs to run."
- "More than one large area for dogs to play- giving them the chance to separate or play how they want to."
- "Some sort of barrier (shrubs or concrete pathway) that reduces visibility for the shy, small dogs."
- "Please no lights, or if others strongly favor then have on/off switches at gates, auto-shut off after say 15' or motion activated. Please avoid (adding to our already huge) light pollution."
- "Option C has more space for small dogs."
- "I like the concepts that break up the space a bit more. It is easier to keep up with my dog when she has less line of site to go tearing off after something."

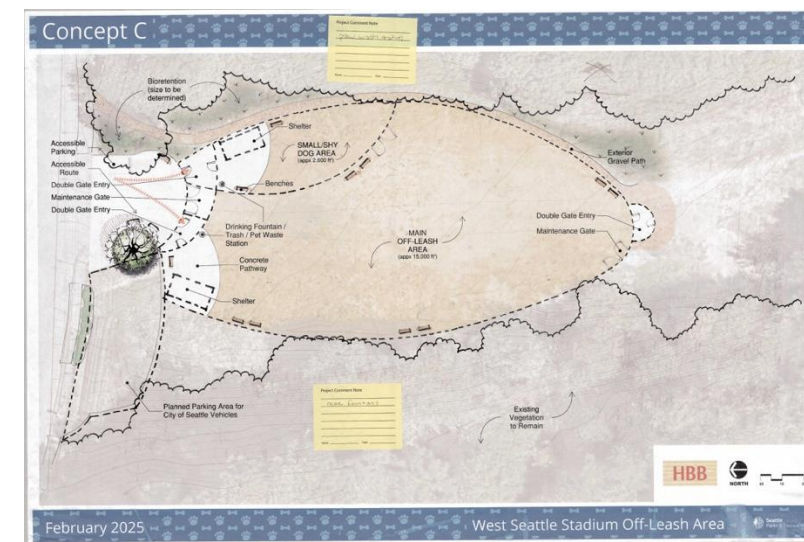
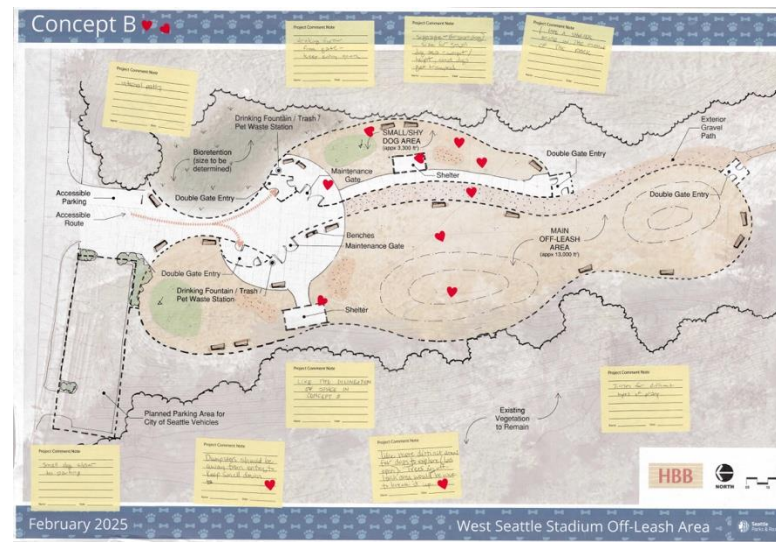
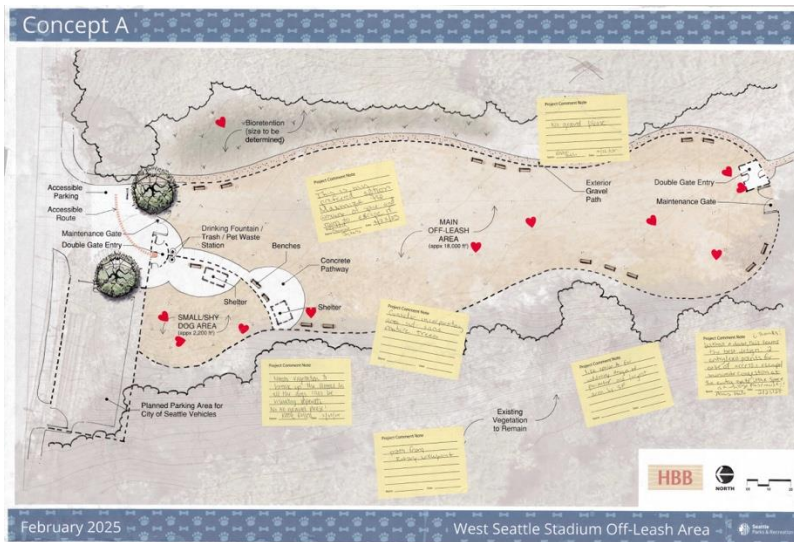
Project Update: Community Feedback and Alternative Selection

On February 23, 2025, an in-person outreach event was held from 9am to 2pm at the West Seattle Farmer's Market. The intent of this event was to bring more community awareness and engagement to the project by asking for community feedback and preference on three design concepts for the off leash area. One presentation board depicted the approximate location for the off leash area, and three additional presentation boards showed three different design concepts for the proposed off leash area. Attendees were encouraged to stick heart stickers or sticky notes on the boards for elements they loved, or to "vote" in one of the prompted questions. Additionally, an online survey was implemented to increase accessibility for feedback. Like the outreach event, the survey showed three site concepts and asked the public for their feedback on the site layout, human and dog amenities, and more. The survey was open from February 23 to March 10, 2025. In total, 131 people completed the survey.

1. Please rank the three concept options with your favorite option first.



- o Answered: 123 / Skipped: 8
- o 48.78% of respondents ranked Concept B as their favorite option.
- o 43.90% of respondents ranked Concept A as their favorite option.
- o 7.32% of respondents ranked Concept C as their favorite option.

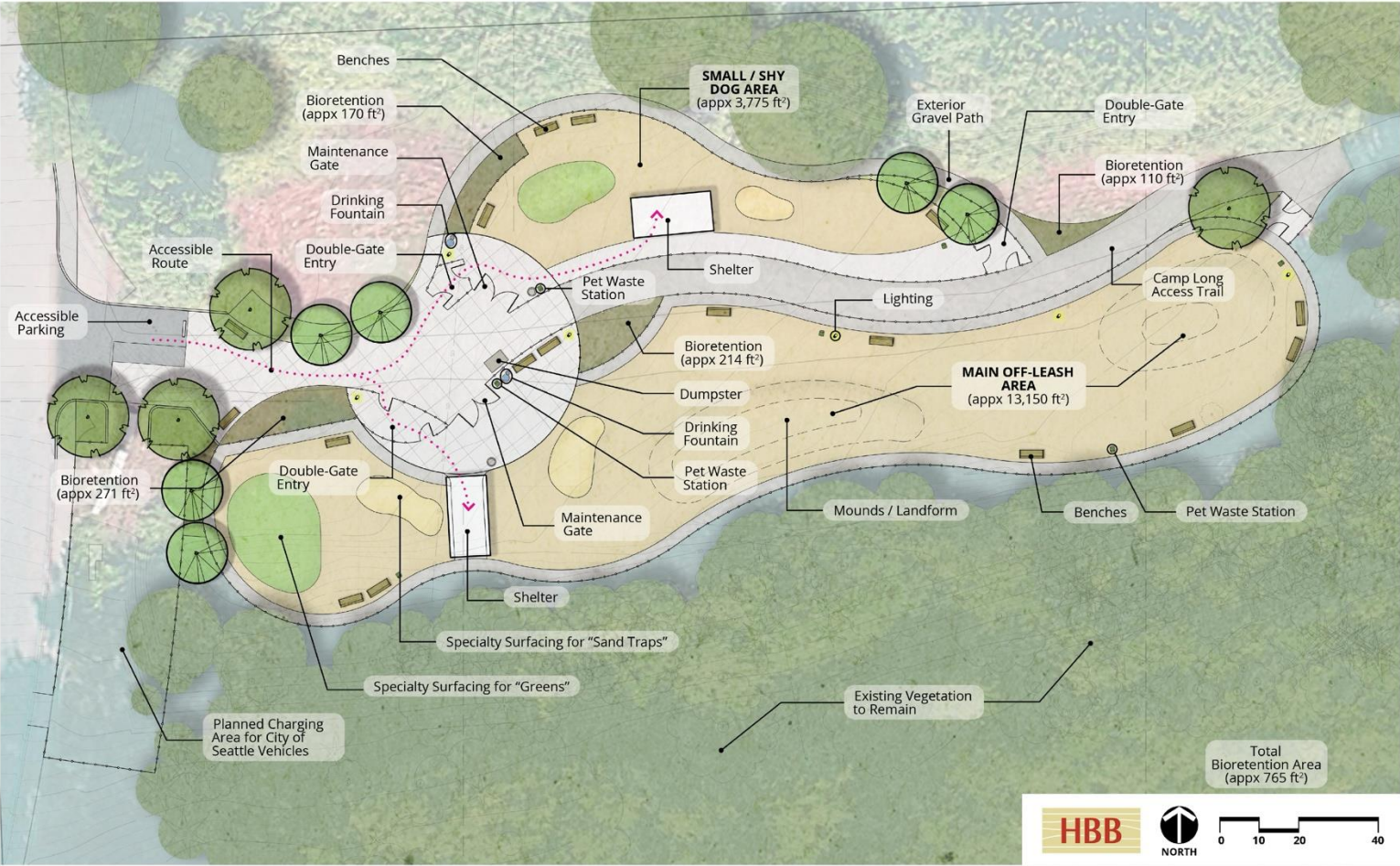


Preferred Schematic Design



Preferred Schematic Design – West Seattle Stadium

Preferred Concept



Preferred Schematic Design

Priorities for community members include separation between big and small dog areas as well as a desire the largest square footage possible for their dogs to be able to run around. On line survey results and in-person event feedback shows a preference for design option B. Because of these results, it is recommended that Concept B moves forward in the design process with some minor changes based on additional feedback received.

Layout changes include more internal paths through the off leash area and an additional external pathway around the “small dog area”. Additional vegetation was requested near the entry zone.

The surfacing material is critical to users and multiple options will be explored as the project moves forward. Also, ensuring the park is sufficiently lit up for winter evening use is critical. An effective organization of the entry area with benches, wash stations, and waste bins will be considered to ensure there is enough space for each use to exist in tandem with the others.