

# New Off-Leash Area Developments (Othello Playground)



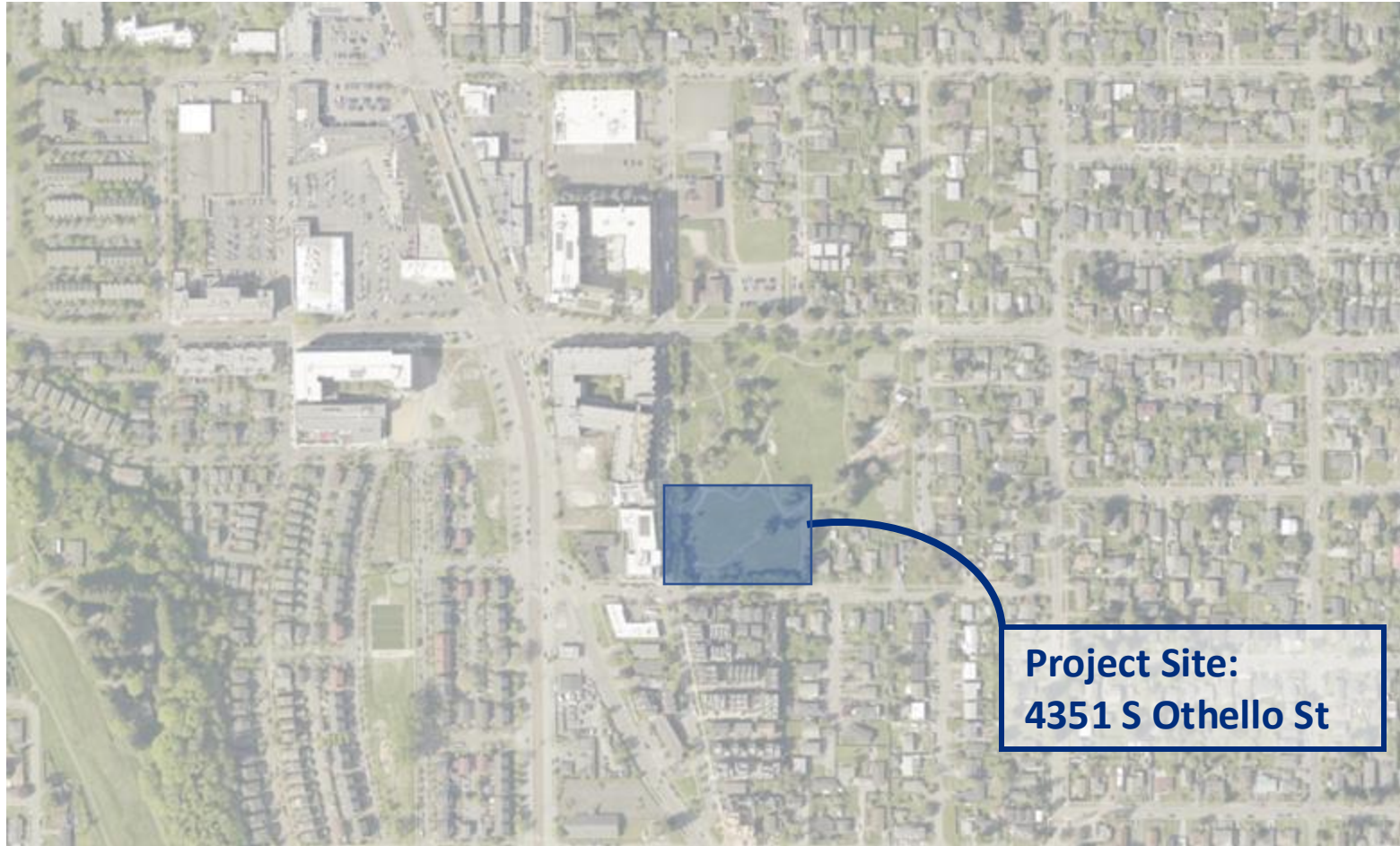


# Project Update



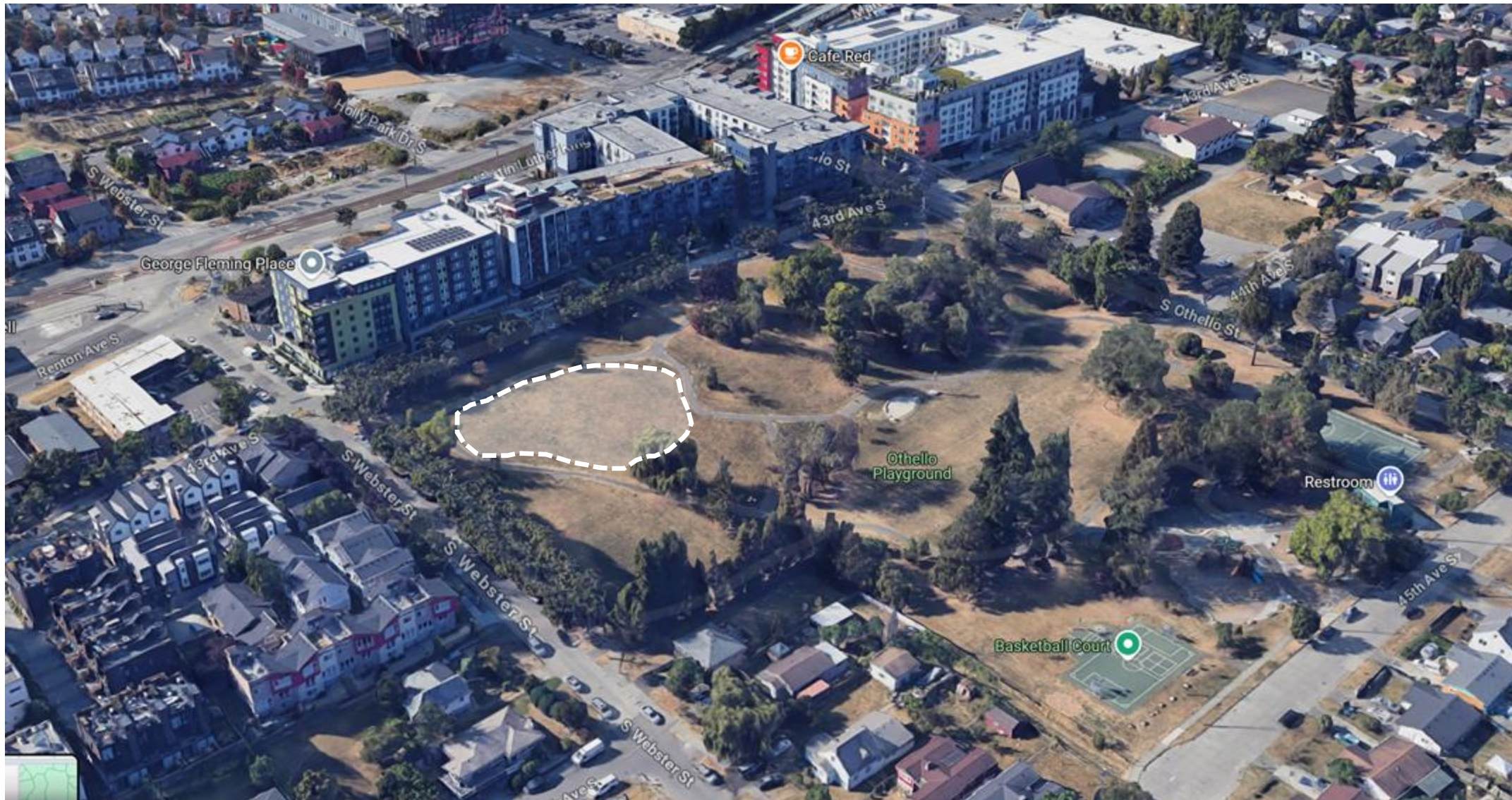


# Project Review: Location (Othello Playground)





# Project Review: Current Site (Othello Playground)



# Project Update: Outreach

## Outreach by SPR to date:

- Pop Up event #1 (10/24/2025)
- Online survey #1 (11/12/2025)
- Pop Up event #2 (02/20/2025)
- Online survey #2 (03/29/2025)

## Would like to see:

- Shelter
- Adequate lighting
- Water access
- Separation between areas
- Vegetation
- Shade
- Shelter

## Community Concerns:

- Noise
- Accessibility
- Amount of space

### Sample open-ended responses:

- "I like the trees providing shade and a visual barrier between the dog areas."
- "I like the walking path all the way around concept B."
- "I like they have dedicated size areas and shelters for each space."
- "I'd like to combine the shelter from A with the layout of B"
- "B has more complete separation of the two areas and trees in the middle mitigate line of sight between them."
- "C looks like it has accessibility concrete paths for folks who use wheels to be mobile - I like that."
- "Incorporation of existing trees. Addition of trees. Multiple entry points. Weather protection shelter."
- "B and A have smaller footprints and take over less of the park. B has a line of trees which may make it more pleasant for neighbors and cut down on noise."
- "I like that the small dog area has a green barrier so if dogs get too rowdy there's a visual barrier."

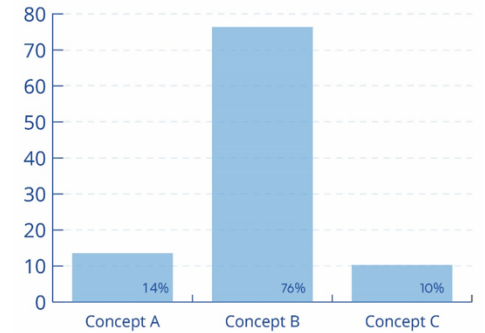


# Project Update: Community Feedback and Alternative Selection

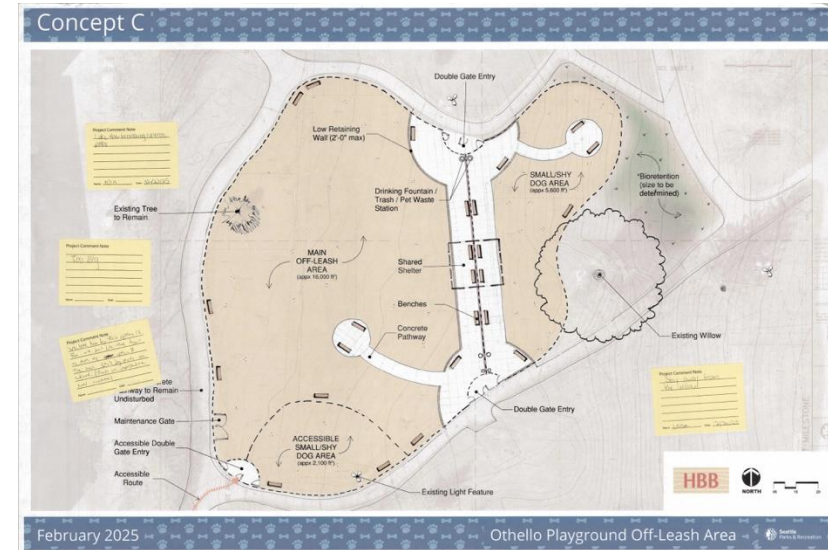
On February 20, 2025, an in-person outreach event was held from 4pm to 7pm at Othello – UW Commons, a collaboration space that is a five-minute walk from the project site. The intent of this event was to bring more community awareness and engagement to the project by asking for community feedback and preference on three design concepts for the off leash area. One presentation board depicted the approximate location for the off leash area, and three additional presentation boards showed three different design concepts for the proposed off leash area. Attendees were encouraged to place heart stickers or sticky notes on the boards for elements they loved, or to “vote” in one of the prompted questions.

Additionally, an online survey was implemented to increase accessibility for feedback. Like the outreach event, the survey showed three site concepts and asked the public for their feedback on the site layout, human and dog amenities, and more. The survey was open from February 20 to March 29, 2025. In total, 62 people completed the survey.

1. Please rank the three concept options with your favorite option first.



- Answered: 59 / Skipped: 3
- 76.27% of respondents ranked Concept B as their favorite option.
- 13.56% of respondents ranked Concept A as their favorite option.
- 10.17% of respondents ranked Concept C as their favorite option.



# Preferred Schematic Design





# Preferred Schematic Design – Othello Playground

## Preferred Concept



## Preferred Schematic Design

Priorities for community members include separation between big and small dog areas as well as a desire the largest square footage possible for their dogs to be able to run around. On line survey results and in-person event feedback shows a preference for design option B. Because of these results, it is recommended that Concept B moves forward in the design process with some minor changes based on additional feedback received.

Layout changes include more internal paths through the off leash area and varying topography so dogs have a more interesting space to run around on. In addition, vegetated buffers around the perimeter of the site can be incorporated to address community feedback.

The surfacing material is critical to users and multiple options will be explored as the project moves forward. An effective organization of the entry area with benches, wash stations, and waste bins will be considered to ensure there is enough space for each use to exist in tandem with the others.



# Questions?

Colin.Campbell@seattle.gov | 206-256-5604

<https://www.seattle.gov/parks/about-us/projects/othello-playground-off-leash-area-development>