

Seattle Parks and Recreation

Planning and Capital Development Branch

Othello Playground Off-Leash Area Development

Public Engagement

Survey Analysis | Othello Playground | Spring 2025



Seattle
Parks & Recreation

In-Person Outreach Event and Survey Overview

On February 20, 2025, an in-person outreach event was held from 4pm to 7pm at Othello – UW Commons, a collaboration space that is a five-minute walk from the project site. The intent of this event was to bring more community awareness and engagement to the project by asking for community feedback and preference on three design concepts for the off-leash area. One presentation board depicted the approximate location for the off-leash area, and three additional presentation boards showed three different design concepts for the proposed off leash area. Attendees were encouraged to stick heart stickers or write comments on sticky notes to place on the boards for elements they loved, or to “vote” in one of the prompted questions.

Additionally, an online survey was implemented to increase accessibility for feedback alongside a recorded presentation on the design options. Like the outreach event, the survey showed three site concepts and asked the public for their feedback on the site layout, human and dog amenities, and more. The survey was open from February 20 to March 29, 2025. In total, 62 people completed the survey. It is important to note that this is not a statistically valid survey. The survey was presented as a series of questions with supportive graphics using the SurveyMonkey platform and was designed to take approximately 5 minutes to complete.

Outreach Event – 2/20/2025

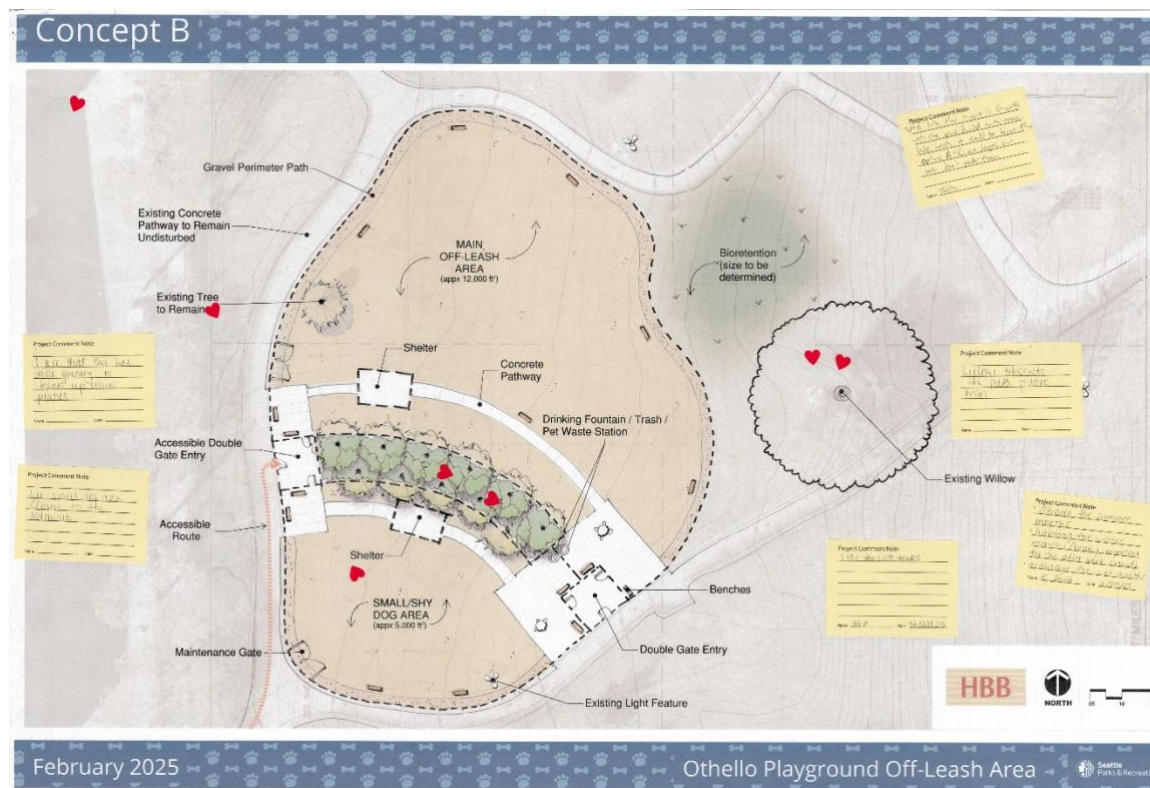
During the in-person outreach event, participants were shown boards with basic project information and the three concepts. They were encouraged to put heart stickers on elements they loved, sticky notes on elements they had feedback on, and to write comments and place them into the comment box. The comments on the sticky notes collected in the comment box are as follows:

- “Add interpretive signage explaining environmental impact of pets: meat consumption, waste disposal, and care”
- “Poop bag dispensers inside and near OLA”
- “More plants surrounding the park to grow and absorb sound. make the small dog area down hill away from residences.”
- “Like wood slat [fence], not chain link. want sound buffer. more vegetation around edges. likes new ginkgo trees. want trash on chief sealth trail.”
- “Existing lighting not enough, add more evening lighting. like tables. like concept A shelters.”
- “Concept B, C -- break up larger off leash area with island of landscaping in the middle.”
- “All options - demonstration project for composting pet waste, perhaps integrate with bioretention?”
- “All options - more landscaping/planting perimeter hedgerow and some full size trees (need protection)”
- “Adding benches along tree line -- concept B”
- “Parking seems to be limited, so please consider bicycle racks to help more people into the park.”
- “They all look good. a few details to think about:
 1. add in something that turns people to the view to mt. rainier - spectacular!!
 2. maybe orient some paths to that view - per site location map.
 3. i prefer the curved paths up top than the dog area. given the gentle hill and landform.
 4. really great that you followed the hill so that the area for dog park is specifically delineated and the rest of the park is separate.
 5. just not sure how much formality needs to be added to the hilltop crossings. prefer something more organic given the landform + new... though I'm partial to delineate paths.”

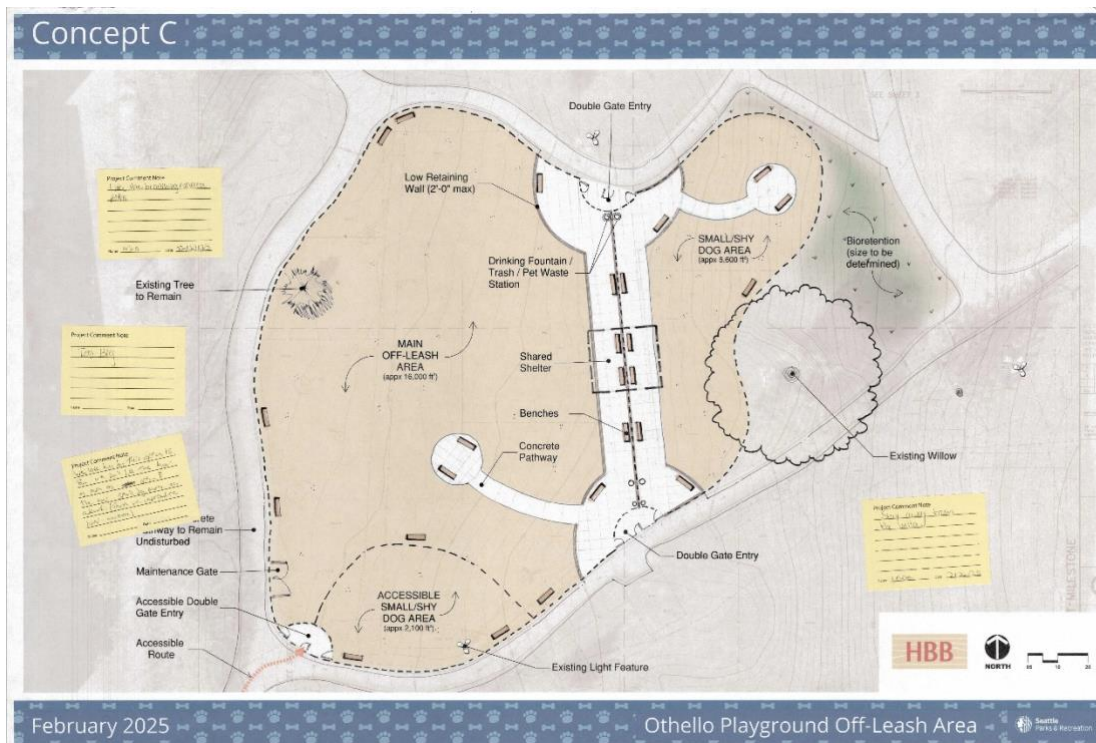
The comments on the sticky notes on each comment board are as follows:



- Concept A
 - “gazebo shelter is cool.”



- Concept B
 - “- shade for summer months - lighting for winter months (really important for after work crowd) - drainage for wet months”
 - “We like the layout in concept B with the park divided with trees. we wish it could be bigger. options A+C are larger, but we don't prefer them.”
 - “Willow obstructs the path, please trim”
 - “I like that this has more greenery to break up visual planes.”
 - “Like small dog area closest to sidewalk.”
 - “I like the circle tables”



- Concept C

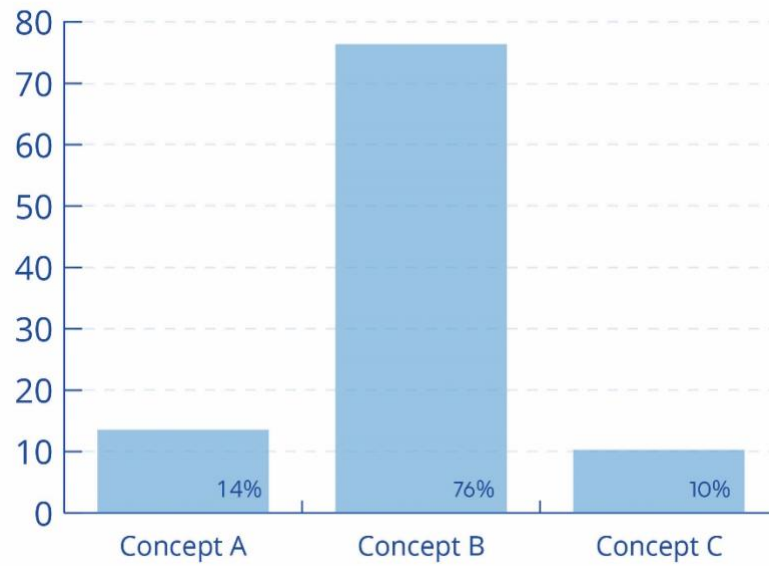
- “We love how big this option is. but we don’t like the layout as much as option B. the two small dog parks are awkward (though we understand the need for accessible areas)”
- “I like the branching concrete paths.”
- “Stay away from the willow”
- “Too big”

The following is a summary of all these comments:

- Shade is great! People really want to ensure there is shade, so the feedback on Concept B with trees is really high.
- Concept B layout is much preferred, but folks wish it could be larger.
- Make sure people know the environmental impact of pets.
- Bike racks are desired since there is limited parking.

SurveyMonkey Survey

1. Please rank the three concept options with your favorite option first.



- Answered: 59 / Skipped: 3
- 76.27% of respondents ranked Concept B as their favorite option.
- 13.56% of respondents ranked Concept A as their favorite option.
- 10.17% of respondents ranked Concept C as their favorite option.

2. What do you like about these concepts?

- Answered: 43 / Skipped: 19
- The most popular feedback was about trees / greenery / plantings. People loved the trees in Concept B and advocated for them and even more if possible. 18 total comments mentioned this subject.
- 12 people mentioned the separation between small/large dog areas. Support was voiced for both physical separation and visual separation.
- Other aspects that received multiple mentions include the shelters (6 mentions), a larger park footprint (4 mentions), and a smaller footprint (2 mentions).

Sample open-ended responses:

- *"I like the trees providing shade and a visual barrier between the dog areas."*
- *"I like the walking path all the way around concept B."*
- *"I like they have dedicated size areas and shelters for each space."*
- *"I'd like to combine the shelter from A with the layout of B"*
- *"B has more complete separation of the two areas and trees in the middle mitigate line of sight between them."*
- *"C looks like it has accessibility concrete paths for folks who use wheels to be mobile - I like that."*
- *"Incorporation of existing trees. Addition of trees. Multiple entry points. Weather protection shelter."*
- *"B and A have smaller footprints and take over less of the park. B has a line of trees which may make it more pleasant for neighbors and cut down on noise."*
- *"I like that the small dog area has a green barrier so if dogs get too rowdy there's a visual barrier."*

3. Is there anything you'd like to be different about these concept options?

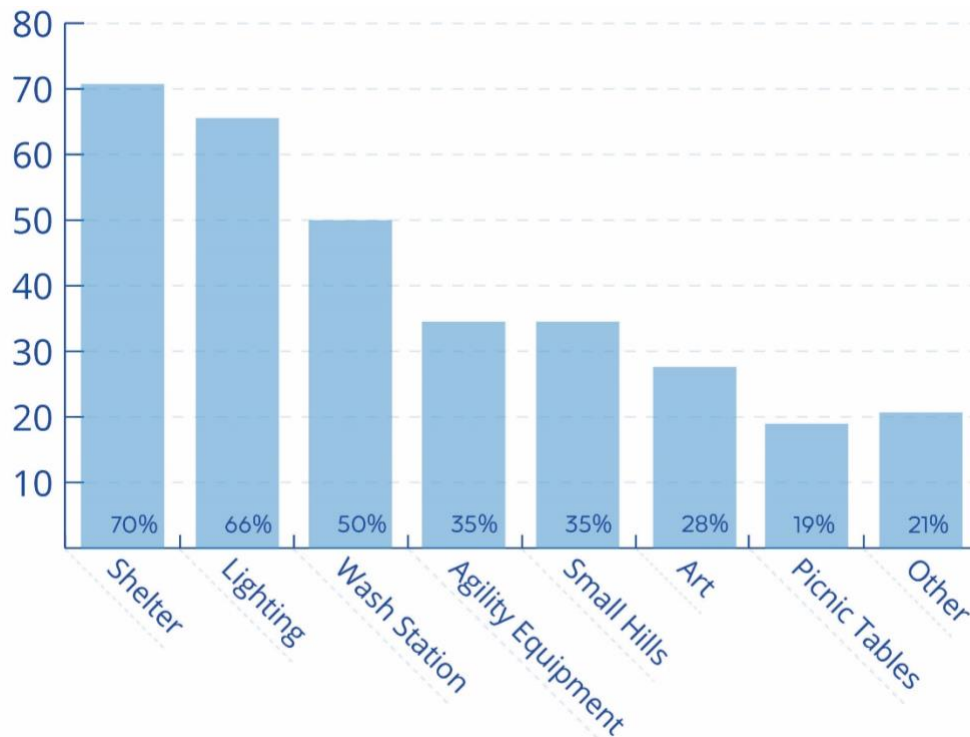
- Answered: 106 / Skipped: 3
- Similar to the past question, the most frequently mentioned item was greenery (8 mentions). People want even more trees than what is proposed.
- There was no other item that was mentioned with such high frequency. With 2 mentions each, folks advocated for more water fountains, a larger footprint, a smaller footprint, and an interior path.

Sample open-ended responses:

- *"If at all possible could you make a larger park, I realize there's probably limitations but I imagine it would be wildly popular once people realize it's here and it might get pretty crowded fast."*
- *"We need more trees to block out noises especially for the surrounding neighbors."*
- *"In all options, need a larger buffer distance between perimeter fence and existing park walkways. Add a pollinator friendly hedgerow planting buffer adjacent, outside perimeter fence. Reducing the gravel dog run area in favor of buffer landscaping is a win win."*
- *"I don't think it makes sense to have 2 shy dog areas so I don't like Option C"*
- *"I don't like the pathway splitting of the large dog leash area of concept A. I also don't like the shared shelter space of C"*
- *"I wish the small blank area beyond the retention area in B was an outdoor space for cats who use leashes. Cats want outdoor time and it's hard to provide it safely in the city."*

4. Some standard elements that will be included in the OLA design are: fully fenced-in area, double-gated entry, trash/recycling receptacles, pet waste bag dispenser, benches, kiosk, accessible entry and park features.

Below are some optional elements for the OLA. Please select any you would like to see at the West Seattle Stadium OLA.



- Answered: 58 / Skipped: 4
- 70.69% of respondents selected shelter for weather protection.
- 65.52% of respondents selected lighting.
- 50.00% of respondents selected dog wash station.
- 34.48 % of respondents selected dog agility equipment and small hills or mounds.
- 27.59% of respondents selected art integration.
- 18.97% of respondents selected picnic tables.
- 20.69% of respondents selected other. Additional ideas provided in this response included a separate cat area, public safety, and dog behavior signage.

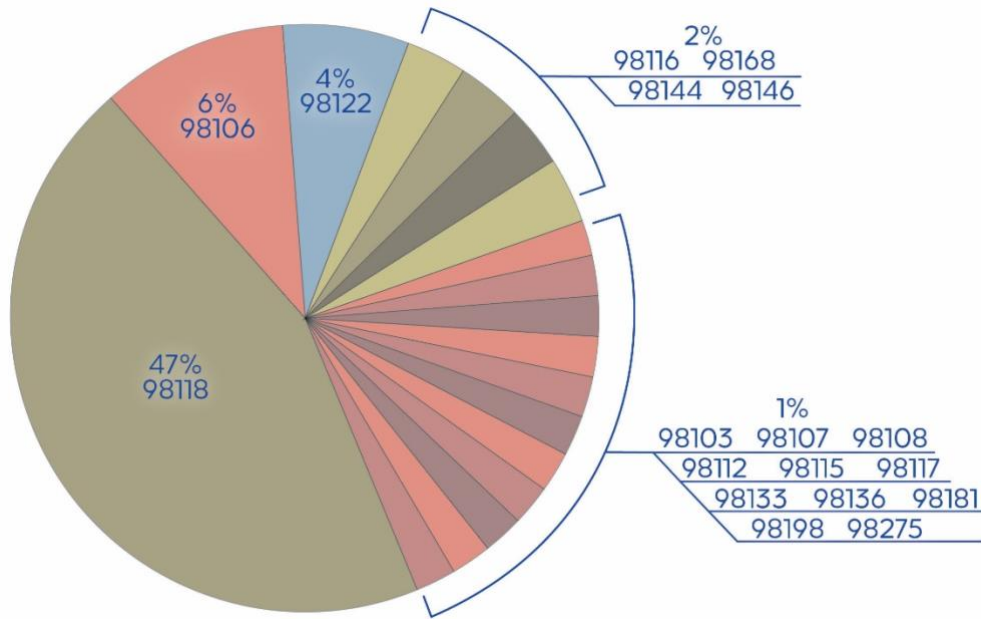
5. Is there any other input you'd like to provide for this project?

- Answered: 23 / Skipped: 39
- Folks were concerned about the impact of the dog park on the surrounding neighborhood and the existing park usage. They advocated for sufficient fencing and buffers.

Sample open-ended responses:

- *"Please limit the amount of mud or provide drainage for increased use in the rainy months"*
- *"Have trash cans integrated into fencing so they can be emptied from the outside of the park."*
- *"As someone who's kids utilize the area around the willow tree frequently and see other kids there as well, option C feels a bit more invasive of the already used park space. We live within walking distance and use the park regularly throughout the year. The upper area where the majority of design's are planned are a mostly unused space in the park, except dogs."*
- *"Decrease Gravel area in favor of increased buffer landscaping. Include a pilot project demonstrating pet waste composting return interpret of signage, highlighting, benefits, and environmental impacts of pet ownership."*
- *"Sound remediation is important because of how close the OLA is to many people's homes."*

6. What is your zip-code?



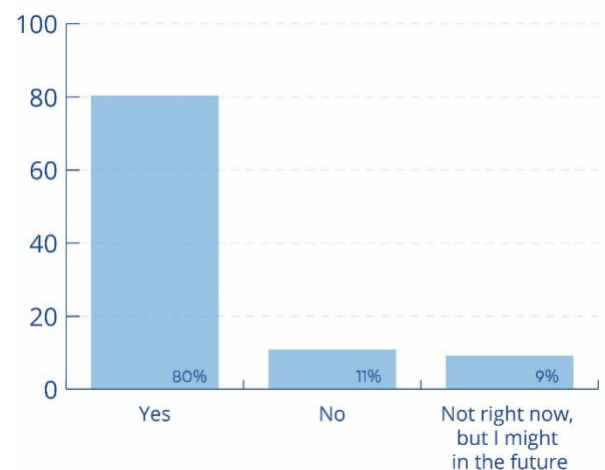
- Answered: 55 / Skipped: 7
- 47.27% of respondents live in the zip-code 98118.
- 10.91% of respondents live in the zip-code 98106.
- 7.27% of respondents live in the zip-code 98122.
- The Othello Playground is in the zip-code 98118. The surrounding zip codes are 98168, 98144, and 98108. These four zip-codes account for 56.36% of respondents.

7. How would you like to receive updates about the project?

- Answered: 57 / Skipped: 5
- 29.82% of respondents prefer no updates.
- 7.02% of respondents prefer getting updates from a project sign at the park.
- 29.82% of respondents prefer getting updates from the project website.
- 33.33% of respondents prefer getting updates from emails.

8. Are you a dog owner?

- Answered: 56 / Skipped: 6
- 80.36% of respondents are dog owners.
- 10.71% of respondents are not dog owners.
- 8.93% of respondents are not dog owners right now, but might be in the future.



Conclusions

Priorities for community members include separation between big and small dog areas as well as a desire the largest square footage possible for their dogs to be able to run around. On line survey results and in-person event feedback shows a preference for design option B. Because of these results, it is recommended that Concept B moves forward in the design process with some minor changes based on additional feedback received.

Layout changes include more internal paths through the off-leash area and varying topography so dogs have a more interesting space to run around on. The topography will be directly influenced by the perimeter of the site and the layout of internal components. In addition, vegetated buffers around the perimeter of the site can be incorporated to address community feedback.

There are some elements that were important to the community that do not impact the layout, but will be incorporated in future iterations. The surfacing material is critical to users and multiple options will be explored as the project moves forward. Also, ensuring the park is sufficiently lit up for winter evening use is critical, but people also voiced concern about light pollution. Careful selection of light fixtures will be considered. Lastly, a smart and effective organization of the entry area with benches, wash stations, and waste bins will be considered to ensure there is enough space for each use to exist in tandem with the others.