



Conceptual Design Narrative

The following goals for improvements to the Magnuson Park Community Center were developed based on discussions with Parks and Recreation staff, and the Magnuson Community Center Advisory Committee.

1. Connect People and Communities

- Create a welcoming, healthy place for people to gather, play and learn
- Support multi-generational and multi-cultural activities
- Provide access to activities for everyone in the community
- Create opportunities for casual interactions
- Create opportunities for classes & formal gatherings
- Incorporate a community kitchen
- Extend welcome to building exterior promoting Center to the community

2. Comply with ADA accessibility requirements.

3. Create a comfortable work space to accommodate all staff.

4. Provide efficient storage for class supplies, tables and chairs.

Concept Plans

Three alternative plans have been developed for public presentation:

The design team is proposing to include hardscape improvements adjacent to the entry, providing space for seating and activities in a welcoming environment. All plans include a proposal for upgrades to the existing reception area to create a more welcoming and useable entry space. The reception desk will be relocated to allow public access to the lift and the office area will be enlarged, providing a centralized staff work space. Additional seating space is created in the expanded reception area. To the north of reception, a closet will be removed to open up the space and create access to an existing coffee bar.

A community kitchen is featured in all three plans. A demonstration island is included, and the kitchen is designed with a moveable glass partition that opens the kitchen to adjacent activity space for community dinners and other functions where food is served.

Two options for restrooms are proposed. Option A and C feature a single gender-neutral restroom. Full height partitions will be constructed to create stalls. Two ADA accessible rooms with sinks may be used as a family restroom or by people who may be uncomfortable using the GN restroom space. A shower is also included in one of these rooms. Option B features a traditional restroom for each gender plus a two gender-neutral restrooms; one with a shower.

Option A features four activity rooms separated by moveable wall partitions. The north classroom includes a break-out room in the north east corner. Option B features three activity rooms. Option C includes a large 1600 sf room divided with a moveable partition wall and a second smaller classroom. The large room does however, include a column in the center of the room. Storage closets for tables and chairs are included in each of the activity rooms. A larger storage room with access to the main circulation path is provided for classroom supplies.

The design team is proposing that the small room in the northeast corner of the floor as shown in Options B and C be designated as a quiet space to be used for meditation or other quiet activities. It could also be used as a private meeting room on the few occasions when meeting space is required.

The stairs on the east side will be widened to comply with code requirements.



LEARNING KITCHEN



COMMUNITY MEALS



CAFE



CRAFTS



ART



YOGA



DANCE



MARTIAL ARTS



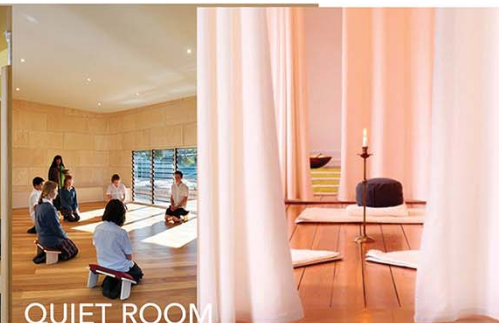
OUTDOOR ACTIVITIES



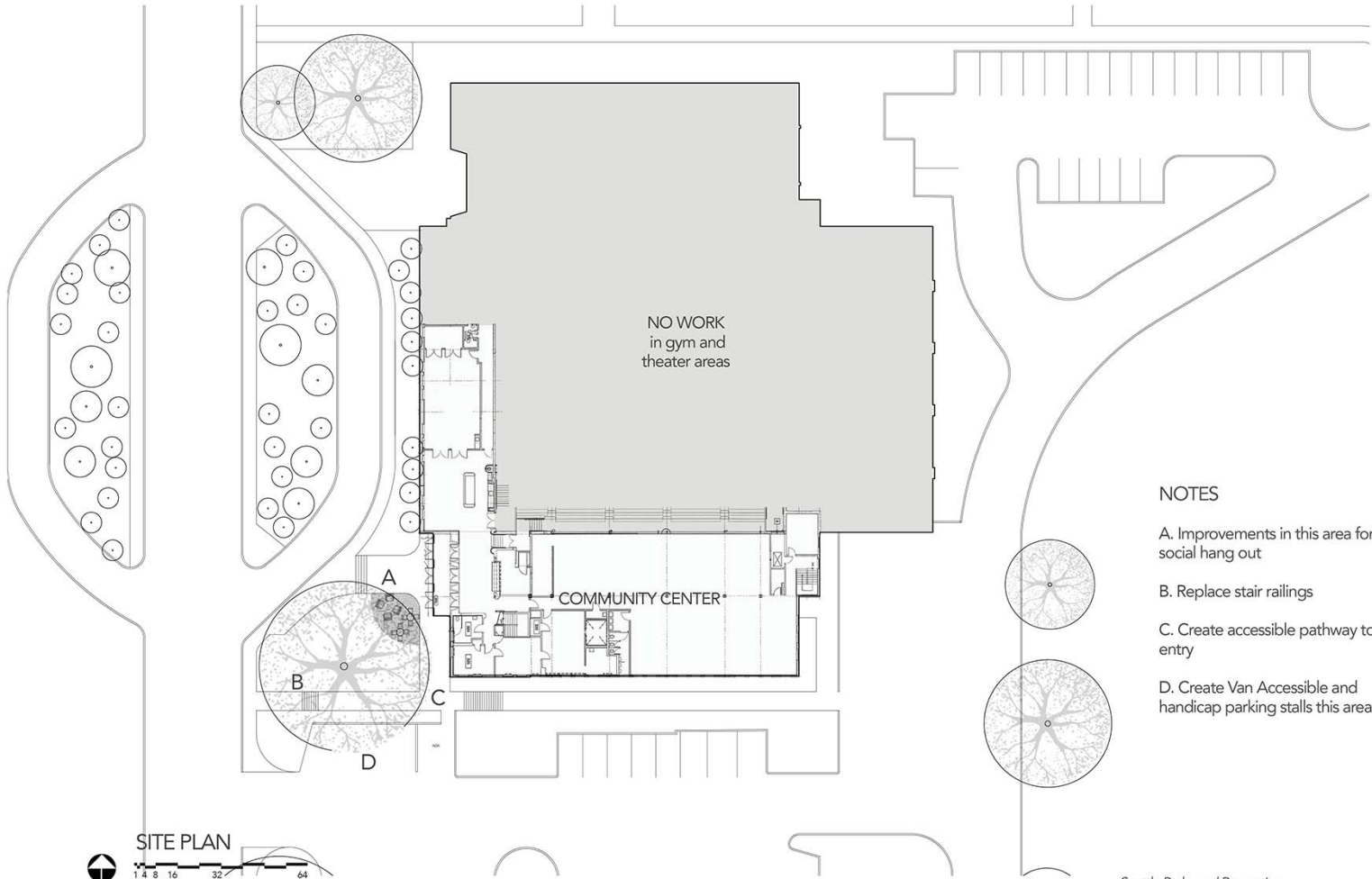
GATHERING



HANG OUT



QUIET ROOM



NO WORK
in gym and
theater areas

COMMUNITY CENTER

A

B

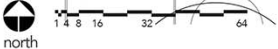
C

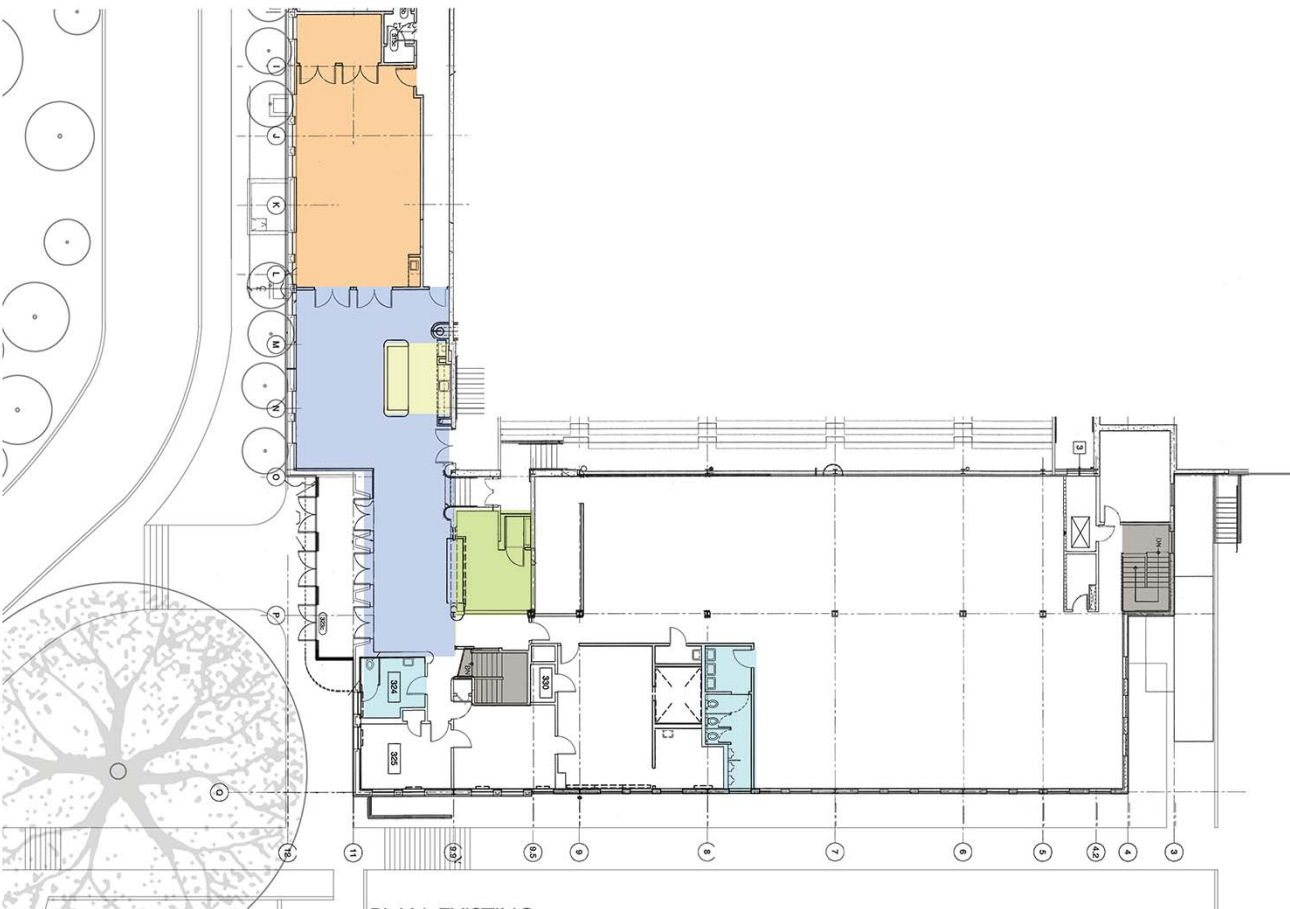
D

NOTES

- A. Improvements in this area for social hang out
- B. Replace stair railings
- C. Create accessible pathway to entry
- D. Create Van Accessible and handicap parking stalls this area

SITE PLAN





PLAN: EXISTING



EXISTING RECEPTION DESK



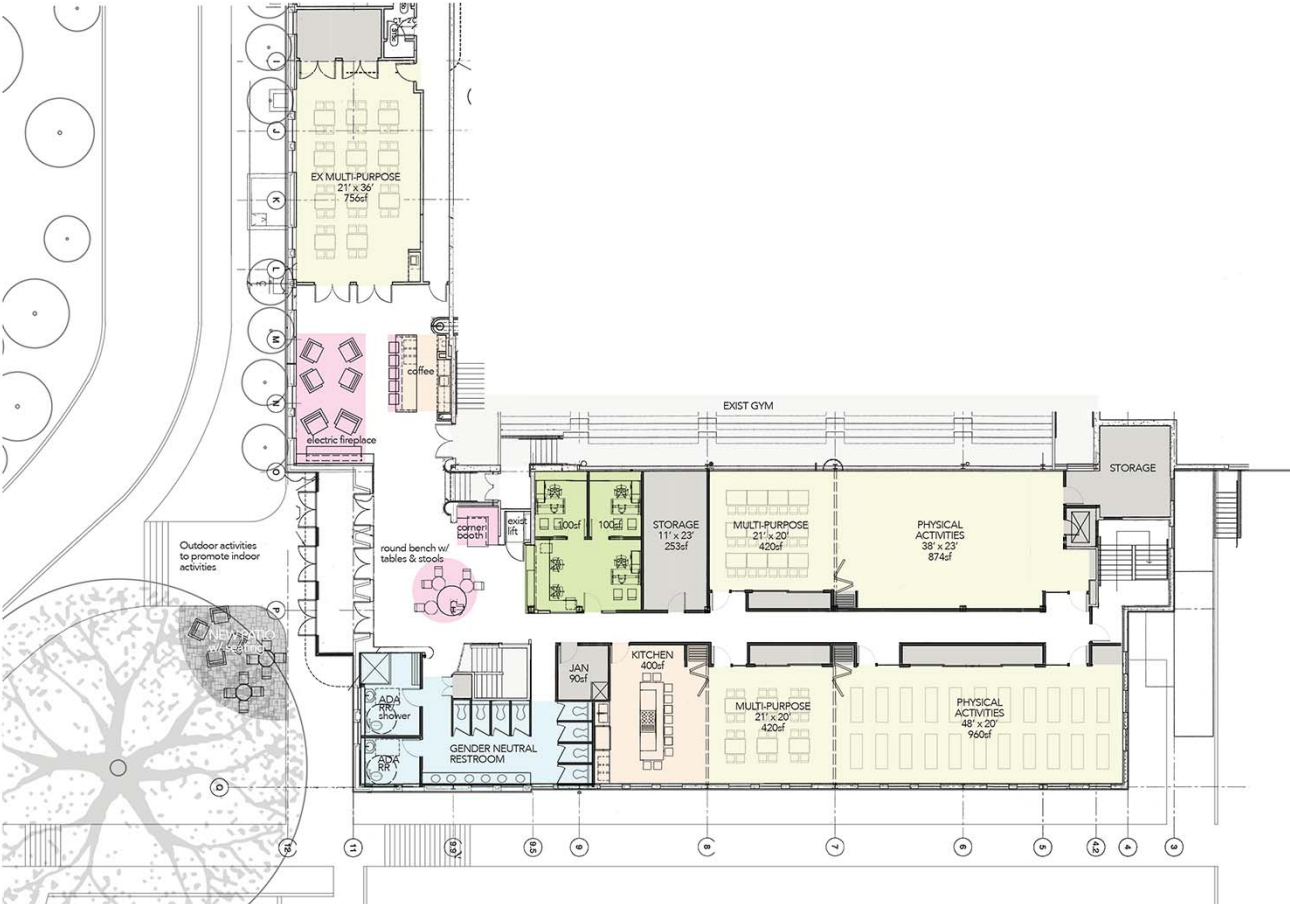
EXISTING LOBBY



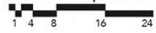
EXISTING AREA TO BE REMOVED

KEY

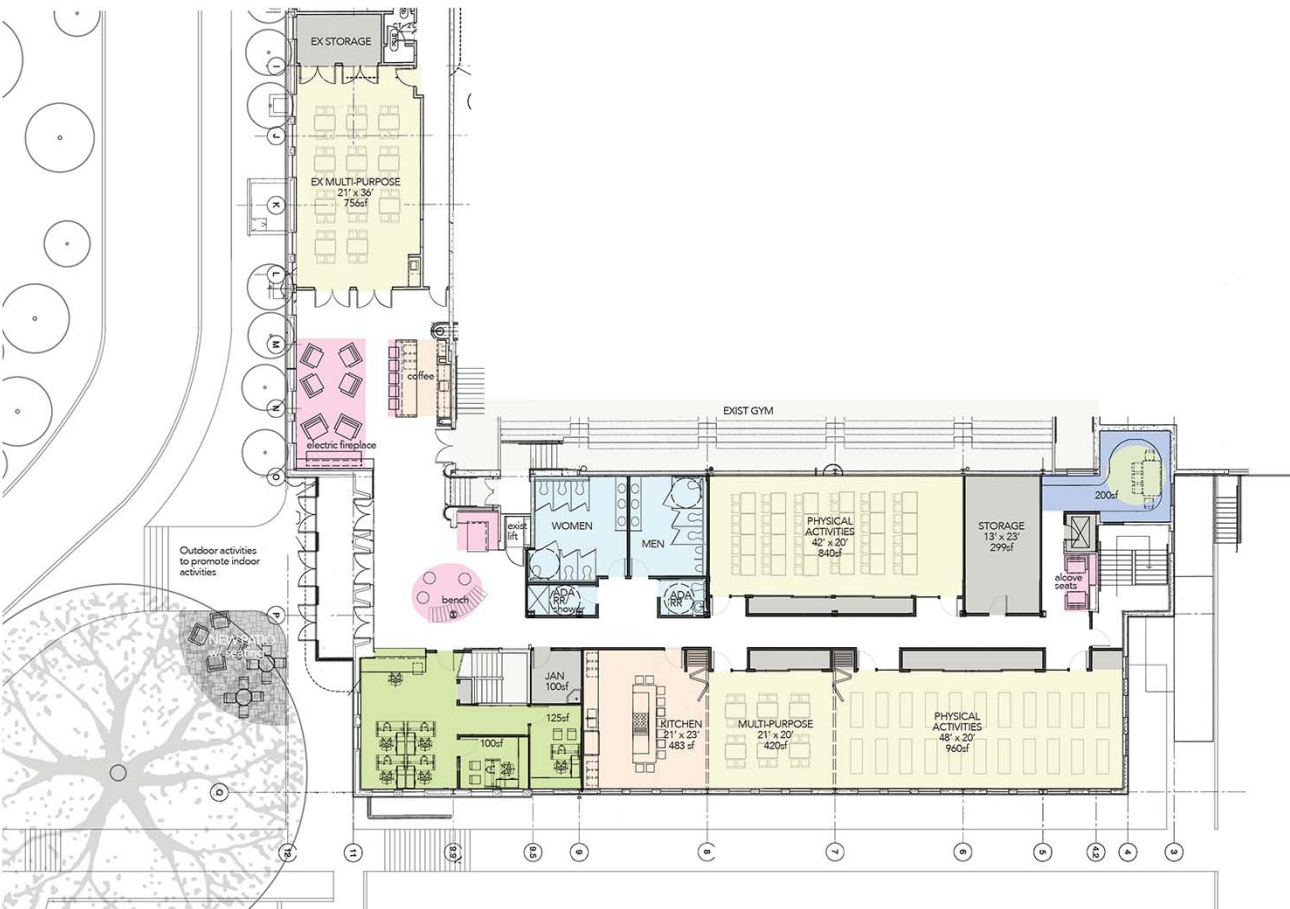
- EXISTING RECEPTION DESK
- EXISTING MULTIPURPOSE ROOM
- EXISTING TOILET
- EXISTING STAIRS
- EXISTING COFFEE AREA
- EXISTING LOBBY



PLAN: Option A

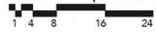


- KEY
- RECEPTION DESK/ OFFICE
 - HANG OUT SPACES
 - KITCHEN/ COFFEE AREA
 - TOILETS (GN = Gender Neutral)
 - STORAGE/ JANITOR CLOSET
 - ACTIVITIES ROOMS
 - QUIET ROOM/ MEETING ROOM
 - EXISTING TO REMAIN



Outdoor activities to promote indoor activities

PLAN: Option B



HANG OUT ZONES



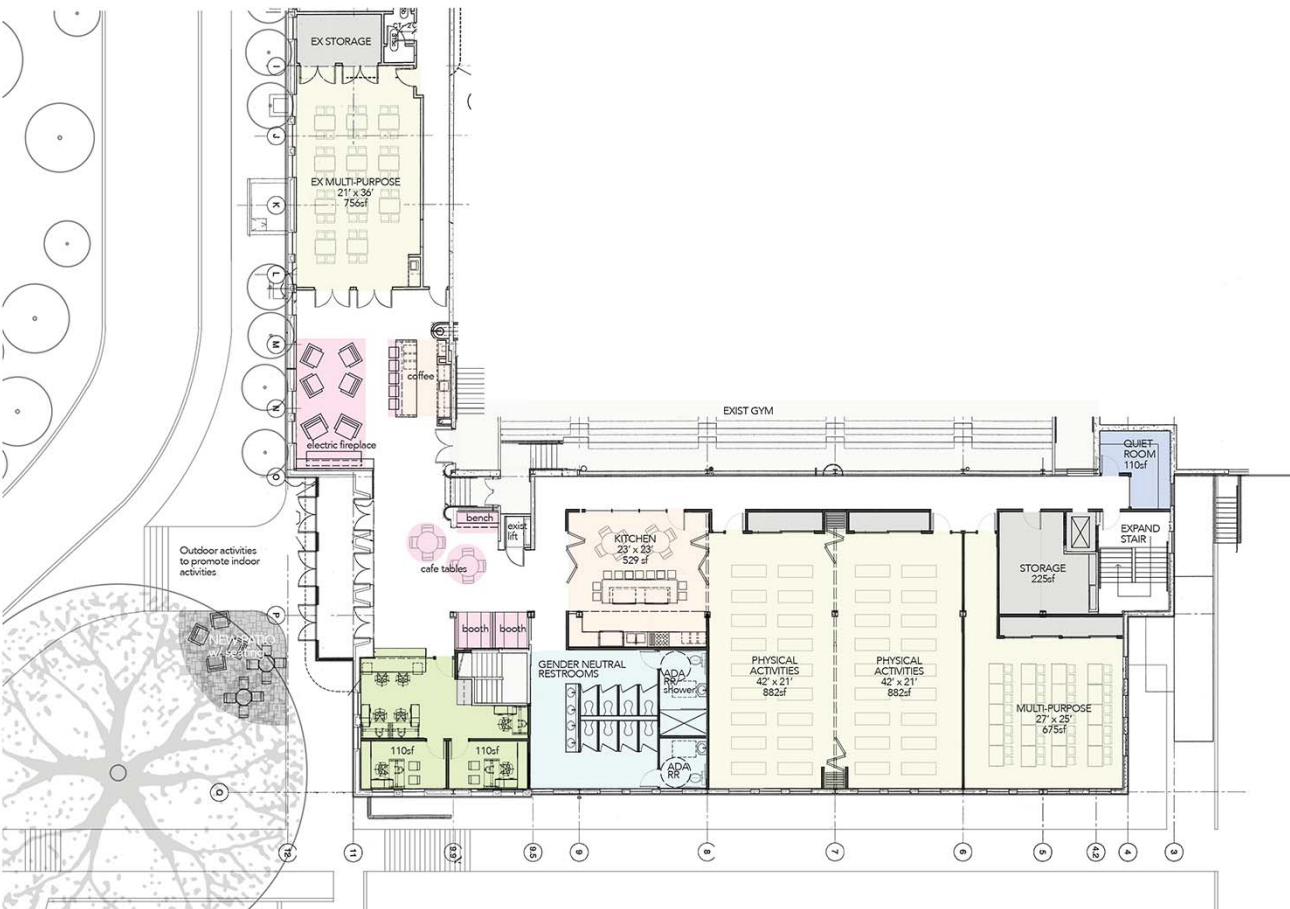
COLORFUL FINISHES



COUNTER SEATING AT KITCHEN

KEY

- RECEPTION DESK/ OFFICE
- HANG OUT SPACES
- KITCHEN/ COFFEE AREA
- TOILETS (GN = Gender Neutral)
- STORAGE/ JANITOR CLOSET
- ACTIVITIES ROOMS
- QUIET ROOM/ MEETING ROOM
- EXISTING TO REMAIN



NANOWALL AT KITCHEN



HANG OUT BOOTHS



BENCH IN HALL

KEY

- RECEPTION DESK/ OFFICE
- HANG OUT SPACES
- KITCHEN/ COFFEE AREA
- TOILETS (GN = Gender Neutral)
- STORAGE/ JANITOR CLOSET
- ACTIVITIES ROOMS
- QUIET ROOM/ MEETING ROOM
- EXISTING TO REMAIN

PLAN: Option C

