



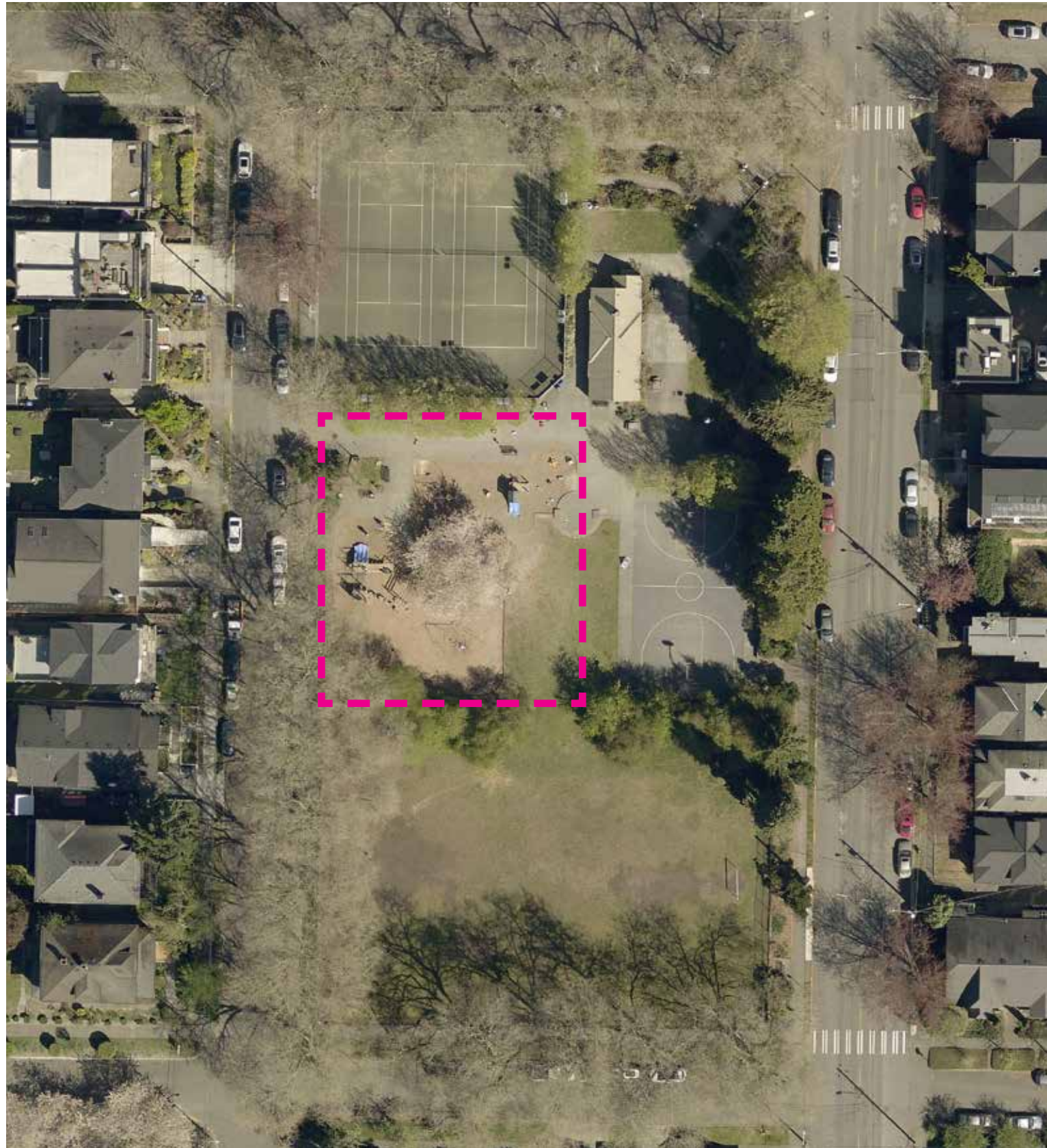
# MADRONA PLAYGROUND PLAY AREA RENOVATION

Project Website: <https://www.seattle.gov/parks/about-us/projects/madrona-playground-play-area-renovation>



**Seattle**  
Parks & Recreation

# LOCATION, CONTEXT & SCOPE



## Scope of work:

- Replace play equipment
- Provide accessible route to and through the play area

**Budget: \$550,000**

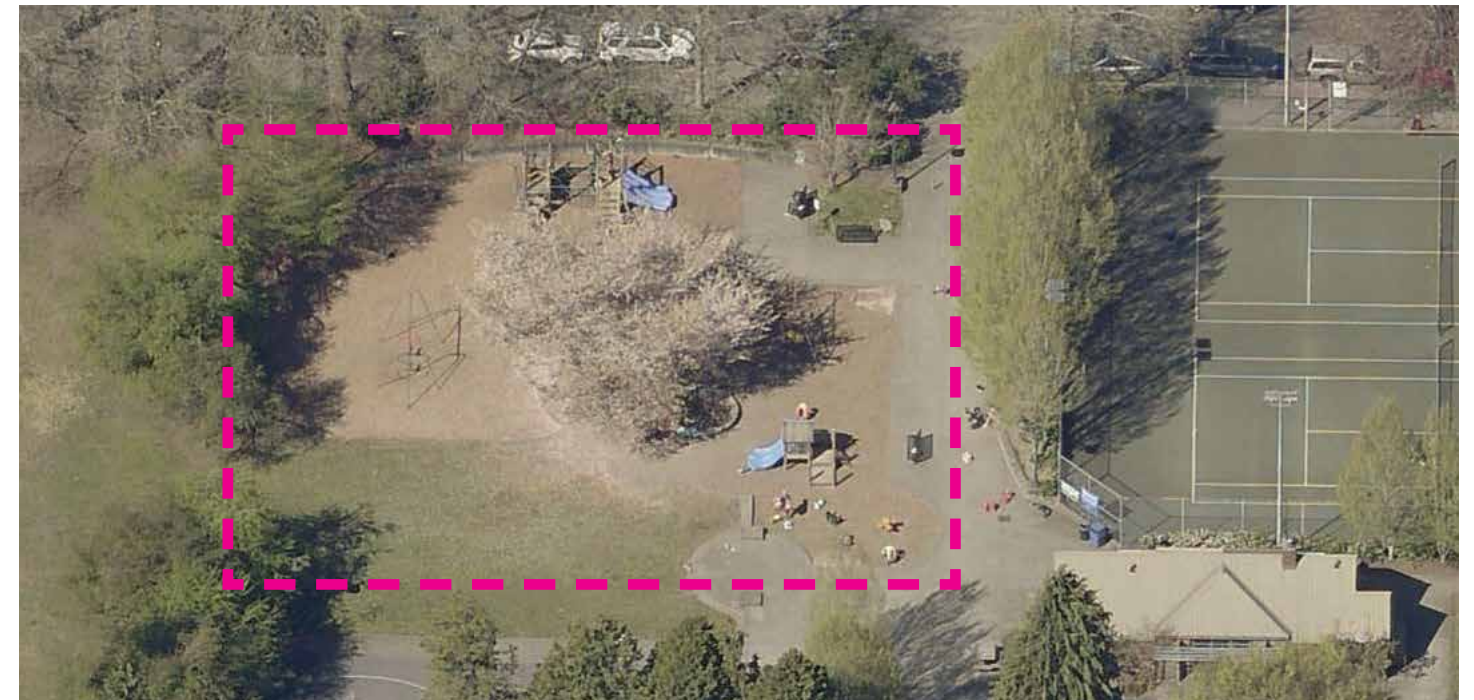
## Schedule:

Planning **2023**

Design **2024**

Construction **2025**

Close Out & Opening **2025**



# Site Challenges



Wood structures in need of replacement



Sandbox in poor condition



Soil compaction impacting roots of trees

# Site Opportunities



Community art around play area



Adjacent amenities

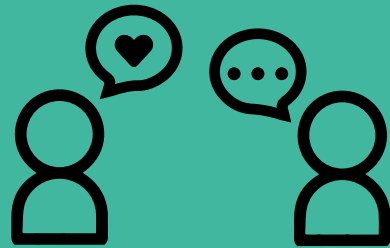


Ample shade and seating for caregivers supervising children

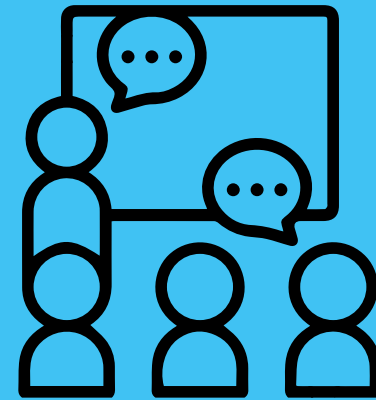


Cherry tree grove provides seasonal interest and shade for play area

## Next Steps...

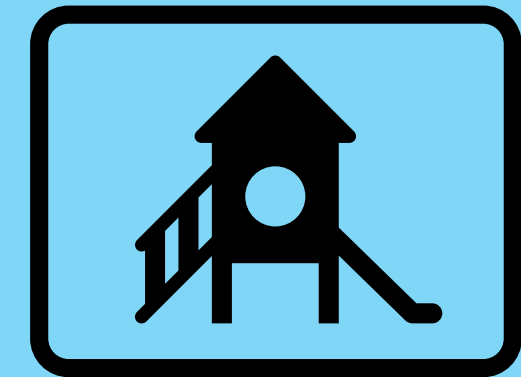


This **Saturday, September 16th**, from **9 am to noon**, we will be at the park! Please come by and share your thoughts about what you'd like see in the play area renovation.



Mark your calendars! **Wednesday, November 1st at 6 pm** we will be hosting a public meeting at the Madrona Playfield Shelterhouse (adjacent to the play area and tennis courts). At this meeting, we will share some preliminary design ideas.

Following the meeting, we will post an online survey where you can provide input on these preliminary designs.



We will use that input to prepare a concept plan, which will be shared with the community at a second public meeting.

We will gather additional input during this meeting and then start drawing construction documents in 2024!

**Join us this Saturday (9/16) at the park from 9 am to noon!**

