



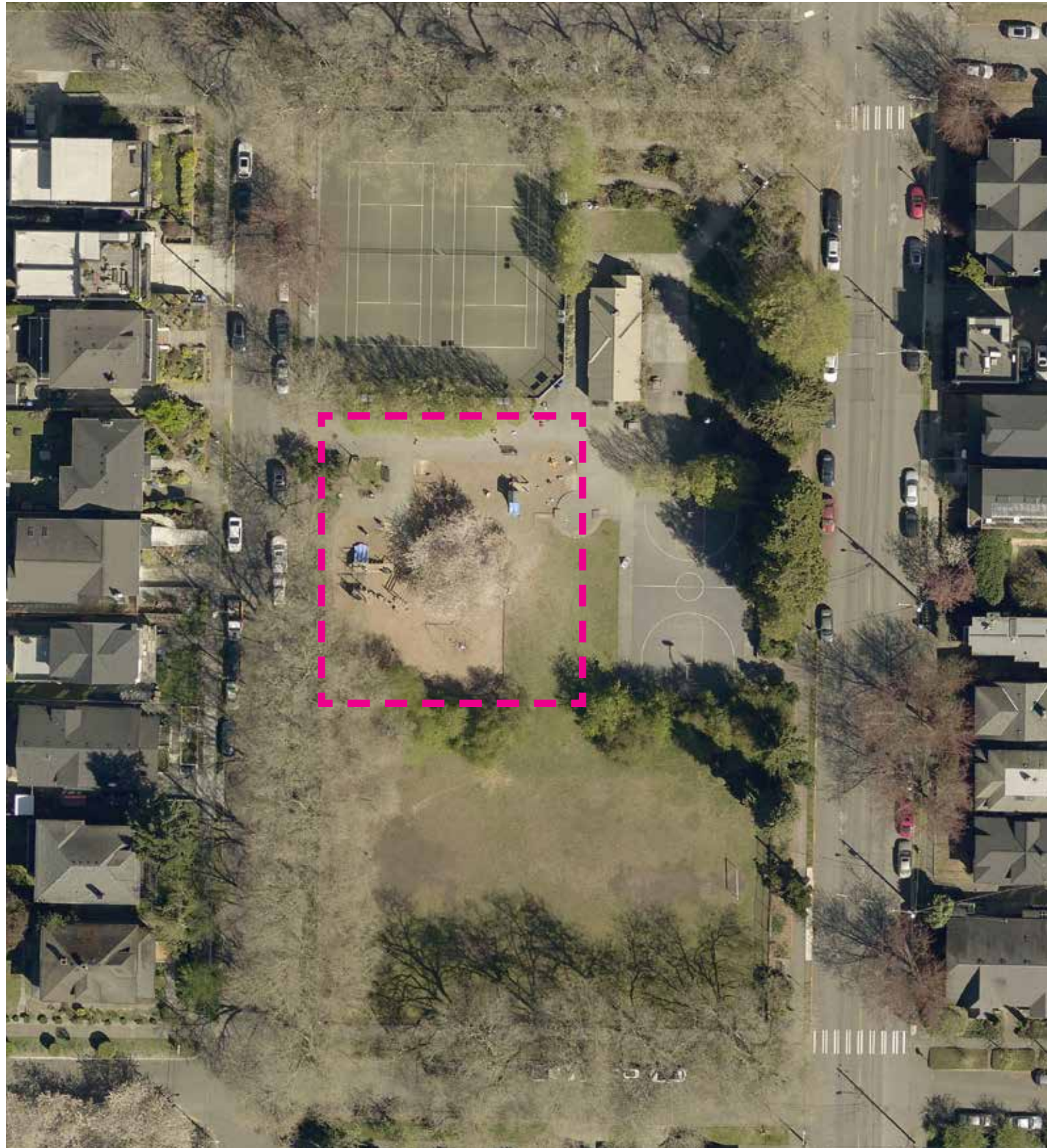
MADRONA PLAYGROUND PLAY AREA RENOVATION

Project Website: <https://www.seattle.gov/parks/about-us/projects/madrona-playground-play-area-renovation>



Seattle
Parks & Recreation

LOCATION, CONTEXT & SCOPE



Scope of work:

- Replace play equipment
- Provide accessible route to and through the play area

Budget: \$550,000

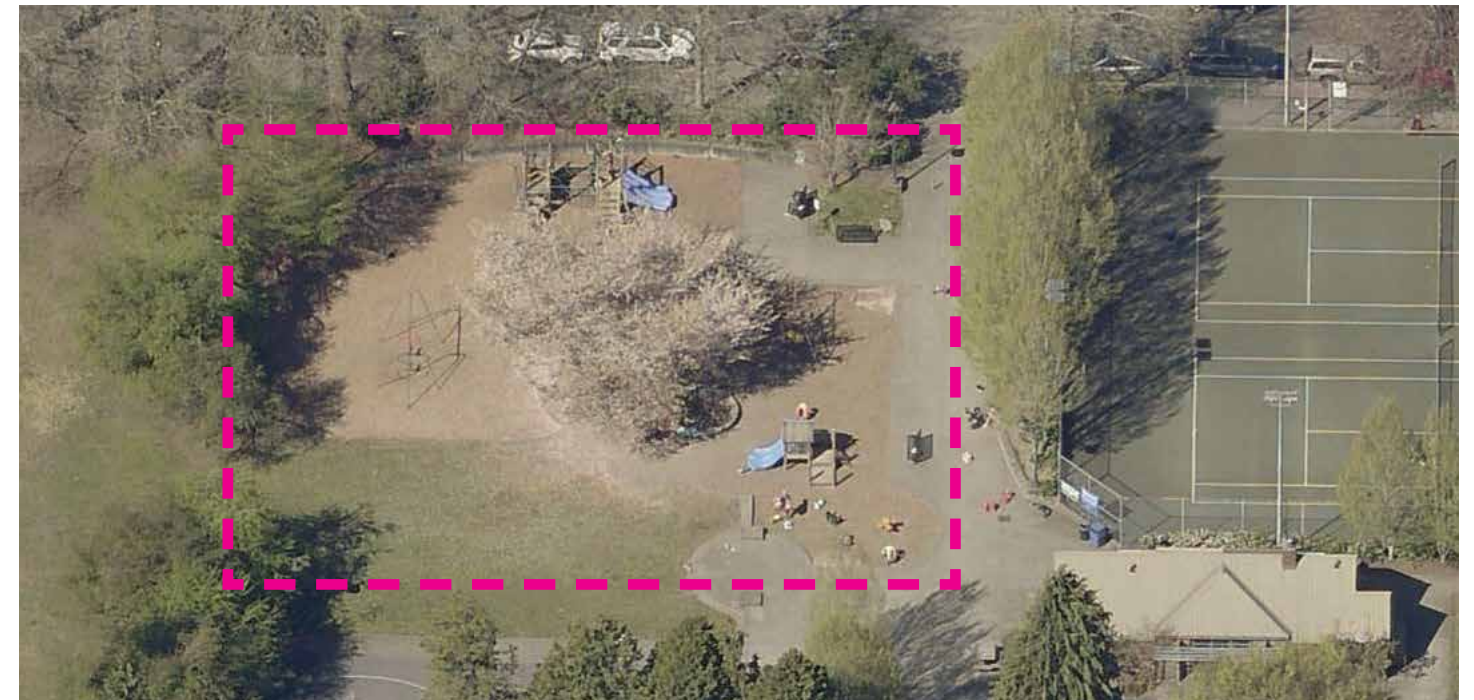
Schedule:

Planning **2023**

Design **2024**

Construction **2025**

Close Out & Opening **2025**



Concept Plan Options



OPTION A

- Age 2-5 play area includes:
 - A structure with 3 slides, a bridge, climbing features, musical elements and a sling
 - Two spin cups
 - Seesaw
 - Play cube
- Age 5-12 play area includes:
 - A large net climbing structure with a slide
 - Double decker cone spinner
 - Cozy cocoon spinner
- Proposed swings include:
 - 2 toddler swings
 - 2 belt swings
 - 1 dish swing



OPTION B

- Age 2-5 play area includes:
 - A structure with 2 slides, a bridge, climbing features and play panels.
 - Spinner
- Age 5-12 play area includes:
 - A large nature-inspired tower structure with 2 slides, climbing features, musical elements and monkey bars
 - Spinner
- Proposed swings include:
 - Age 2-5 swing set with a toddler swing and a tandem swing
 - Age 5-12 swing set with 2 belt swings, a dish swing and a tandem swing



OPTION C

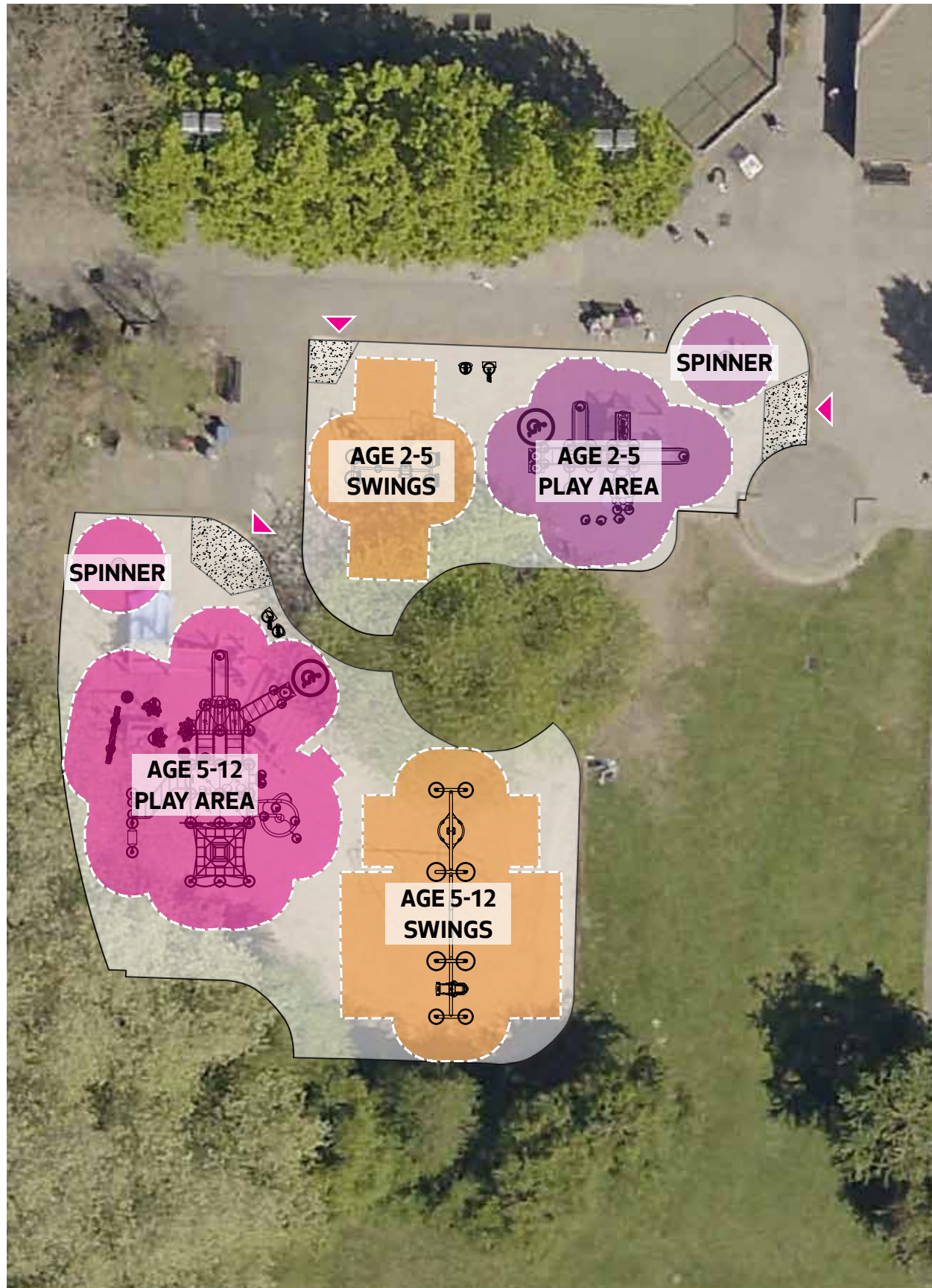
- Age 2-5 play area includes:
 - A structure with slides, a net bridge, climbing features and play panels.
 - Toddler play structures (giraffe and coupe)
 - Spinner
 - Spring toy
- Age 5-12 play area includes:
 - A large net climbing structure with a variety of play opportunities
 - Inclusive net carousel
 - Somersault bars
- Proposed swings include:
 - Age 2-5 swing set 2 toddler swings
 - Age 5-12 multi-user pendulum swing



OPTION D

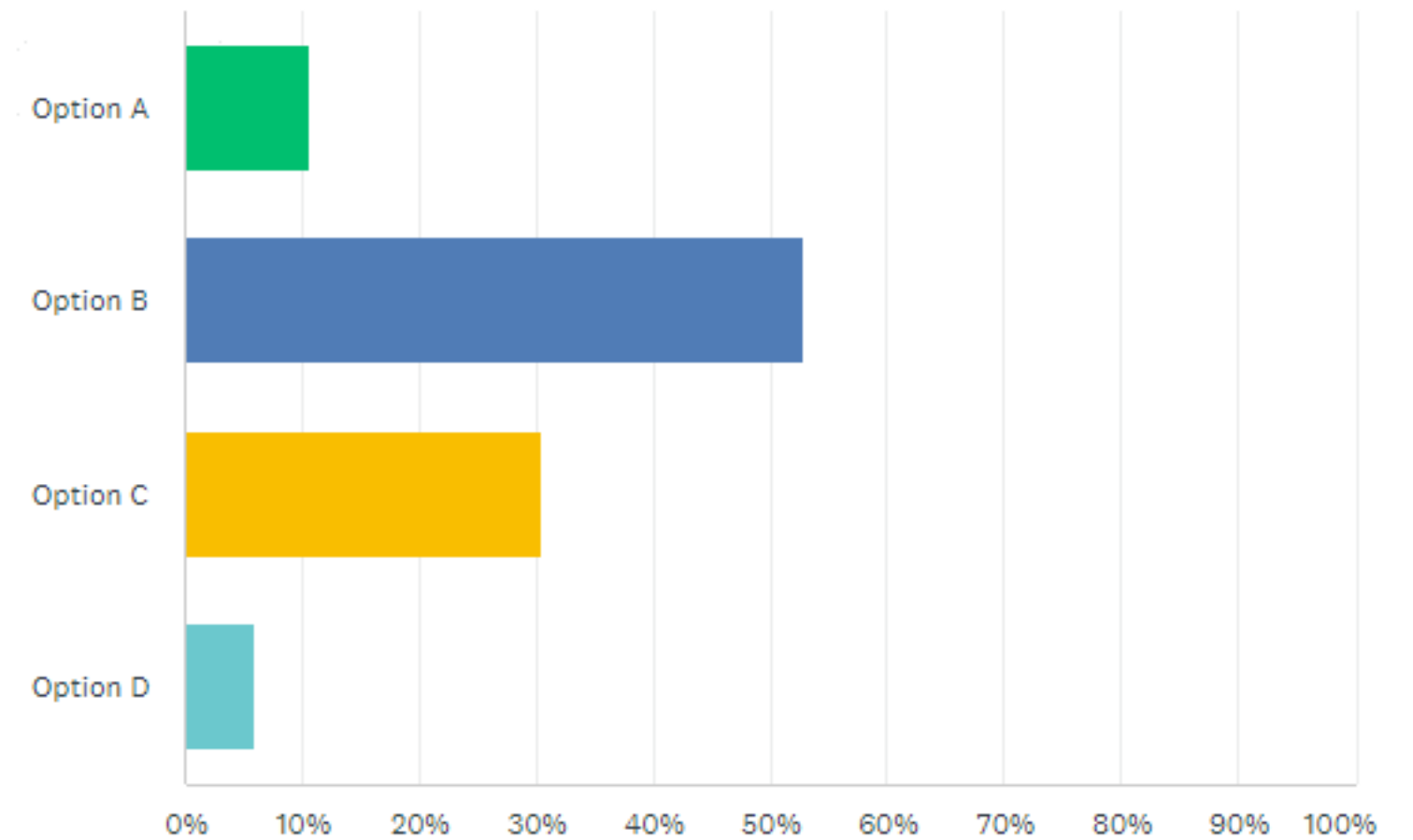
- Age 2-5 play area includes:
 - A garden themed structure with 2 slides, climbing features, a crawl tunnel, play panels, a table and more
 - Two saddle spinners
- Age 5-12 play area includes:
 - A mountain-inspired large play structure with 2 slides, variety of climbing features, monkey bars, balance beams and activity panels
 - Balance climber
 - 2 spinners
- Proposed swings include:
 - 2 toddler swings
 - 1 large dish swing (accessible, multi-user)

What we've heard from you...



Madrona Playground Play Area Renovation

Which option do you like most for the ages 2-5 and 5-12 play area?



Option B - Preferred Option



What we've heard from you...

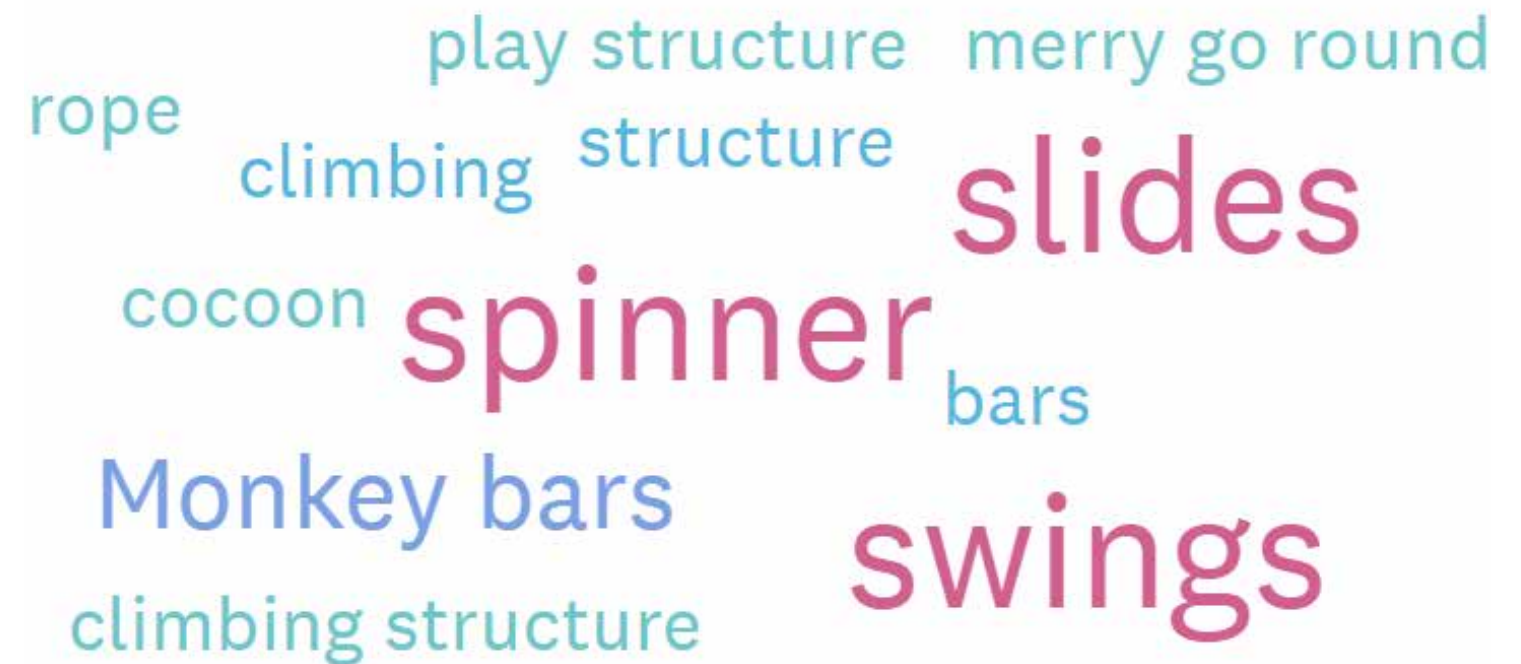
Why do you prefer the equipment option you chose in question 1?



For the preferred option (B), people generally liked:

- the covered space in the structures shown in this option
- the number of swings (net increase)
- the variety and types of swings offered
- the variety of play elements
- the nature theme / natural color palette

Are there any items from other options that you would like to incorporate into your desired option?



- There was a preference for a "cup-style" spinner in the 2-5 year play area.
- Many expressed a desire for a spring toy in the age 2-5 play area. The existing one is very popular.
- There was interest in including a multi-user or carousel style spinner in the age 5-12 play area.
- Interest in a climbing wall on the 5-12 year old structure, in addition to the rope/net climbing.

Updated Preferred Schematic Design



Summary of updates (based on feedback):

- Replaced the solo standing spinner with "cup-style" spinner in the 2-5 year play area.
- Added a spring toy in the age 2-5 play area.
- Replaced the solo standing spinner with a multi-user / carousel style spinner in the age 5-12 play area.
- Added a climbing wall on the 5-12 year old structure.

	AGE 2-5	AGE 5-12
TOTAL ELEVATED PLAY COMPONENTS	6	12
TOTAL ELEVATED PLAY EVENTS ACCESSIBLE BY TRANSFER	6	12
TOTAL ACCESSIBLE GROUND LEVEL COMPONENTS	8	13
SLIDES	2	2
SWINGS	2*	4*
FEATURES	SPINNER, CLIMBERS, STEPS, PANELS, COVER (ROOF)	SPINNER, BALANCE BEAM, CLIMBERS, MUSIC PANELS, NET CLIMBER, MONKEY BARS, COVER (ROOF)

Updated Preferred Schematic Design | Age 2-5 Play Area



Updated Preferred Schematic Design | Age 2-5 Play Area



Updated Preferred Schematic Design | Age 2-5 Play Area



Updated Preferred Schematic Design | Age 5-12 Play Area



Updated Preferred Schematic Design | Age 5-12 Play Area



Updated Preferred Schematic Design | Age 5-12 Play Area



Updated Preferred Schematic Design | Age 5-12 Play Area



SPINNER

AGE 5-12
PLAY AREA