

K Y Ō R Y O K U

COLLECTIVE EFFORT
knowledge • wisdom
passion • vision • goals
experience • expertise
plants • wildlife • legacy

GARDEN MISSION

To respect, curate, and grow Kubota Gardens for the benefit of our local and global communities.

GUIDING PRINCIPLES

HISTORY

- Kubota Family
- Garden History (historic gardens, periods of growth, eras of ownership)
- Immigrant Experience in Seattle

VISITOR EXPERIENCE

- Create a sense of Arrival
- Establish security (parking, in the garden)
- Keep well-maintained Garden Spaces and Natural Areas
- Offer wayfinding opportunities
- Tell compelling stories through Interpretation and Take Away messages
- Provide Visitor Services (restrooms, eats/drinks/classes/tours)

GARDENS AND GROUNDS

- Collections Management (contributing vegetation)
- Maintenance Standards (consistent visual message, visitor responsive)
- Water Quality (in ponds, Mapes Creek, bioswales)
- Historic gardens (restoration and maintenance of intent)
- New Gardens (complimentary, purpose-driven, habitat-contributing)
- Natural Areas (limited access, visual backdrop, habitat, wild experience)
- Facility Security (perimeter fence, maintenance area, visitor center)

VISITOR EXPERIENCE NEEDS

CIRCULATION

- WAYFINDING: CLEAR PATH HIERARCHY, SUBTLE DIRECTIONAL MARKERS
- ACCESSIBILITY (SLOPE & SURFACING)
- LOOP TRAILS

SECURITY

- PARKING AREA
- PERIMETER FENCE

SERVICES

- RESTROOMS
- REFRESHMENTS

INTERPRETATION

- GARDEN HISTORY
- PLANT IDENTIFICATION

GARDEN QUALITY

- WATER QUALITY
- LAWNS
- PASSIVE/CONTEMPLATIVE

EVENT NEEDS

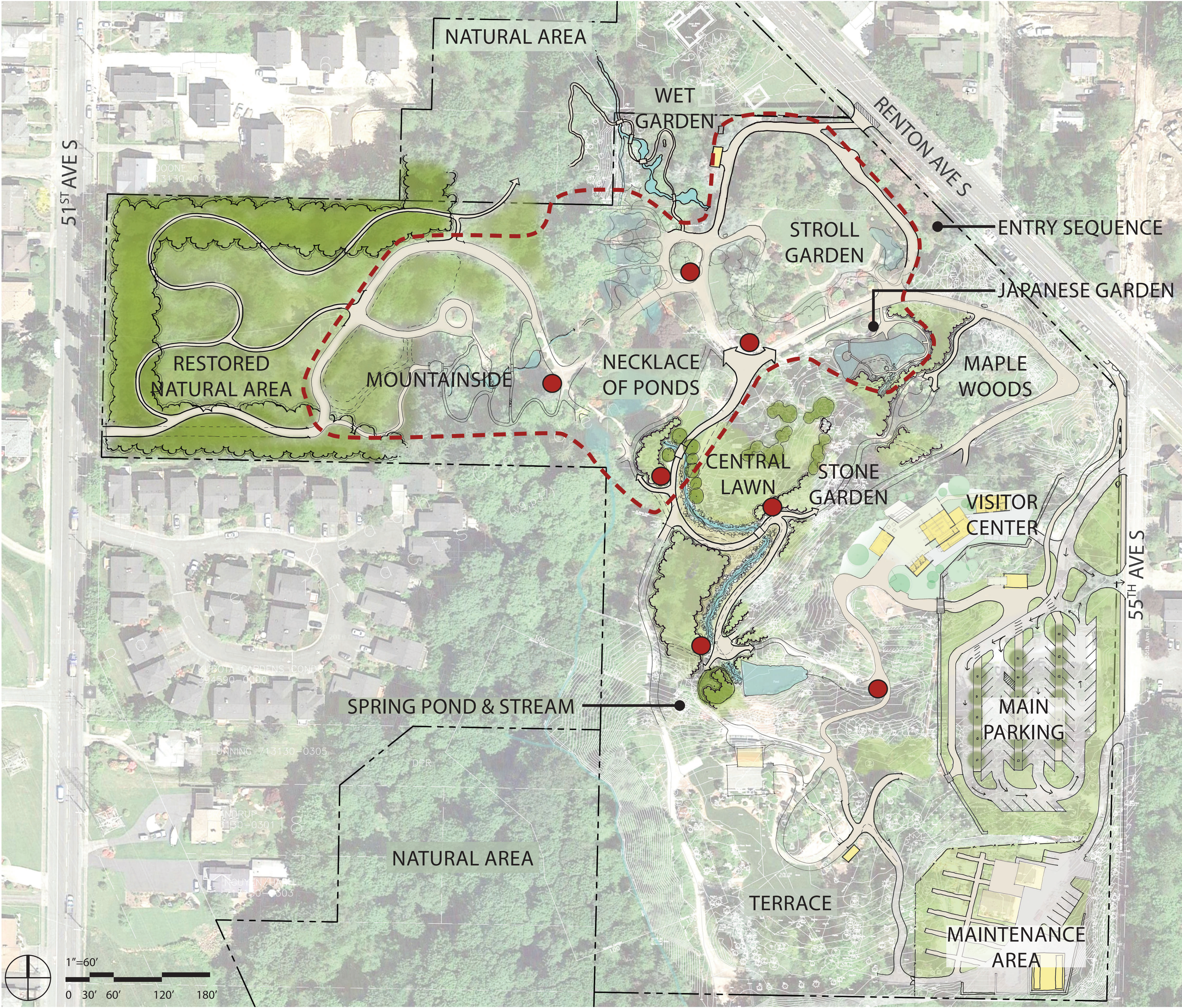
- DEFINED EVENT AREAS
- ACCESS
- SERVICES

PRELIMINARY CONCEPT PLAN

RESPECT | CURATE | GROW

LEGEND

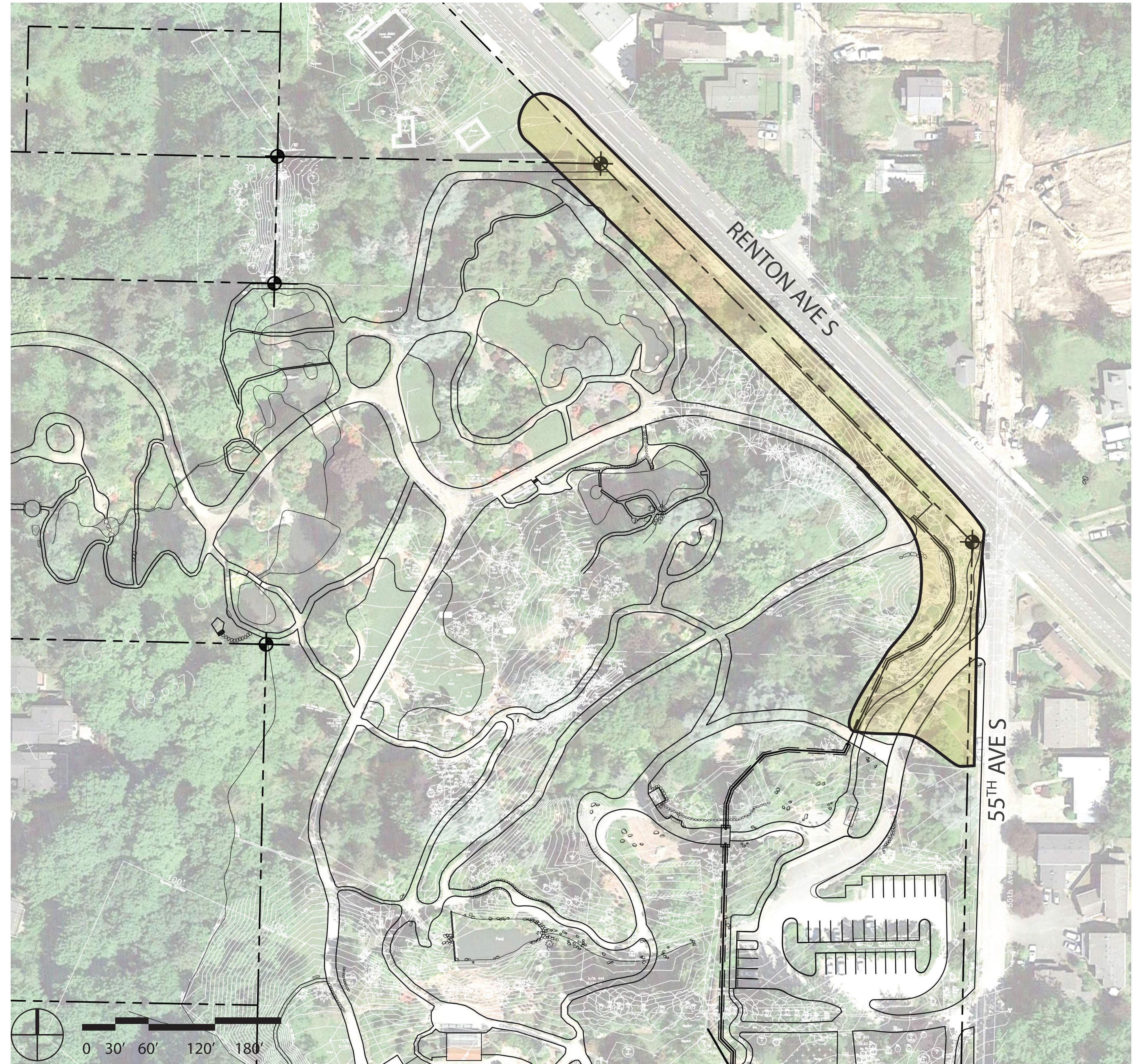
-  Garden Area
-  Core Garden
-  Decision-making point



ENTRY SEQUENCE

GARDEN EXPERIENCE FROM RENTON AVENUE TO MAIN GATE

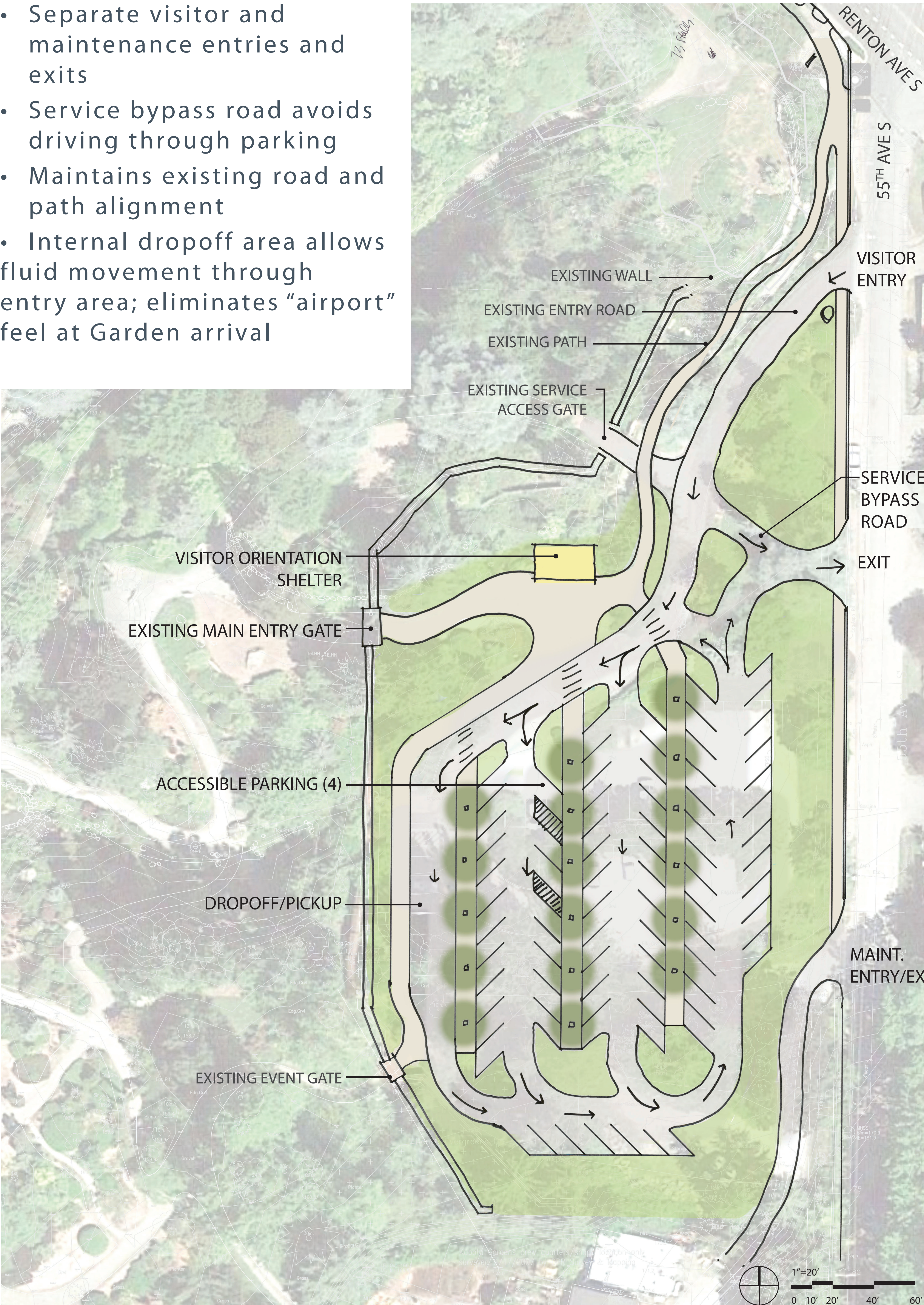
- Take advantage of 650 feet of streetscape as part of the Garden's public face
- Replace hedges with wider variety of plantings
- Create backdrop from within the Garden
- Buffer noise impacts from Renton Avenue to the Garden



MAIN PARKING 1

102% MORE PARKING THAN EXISTING

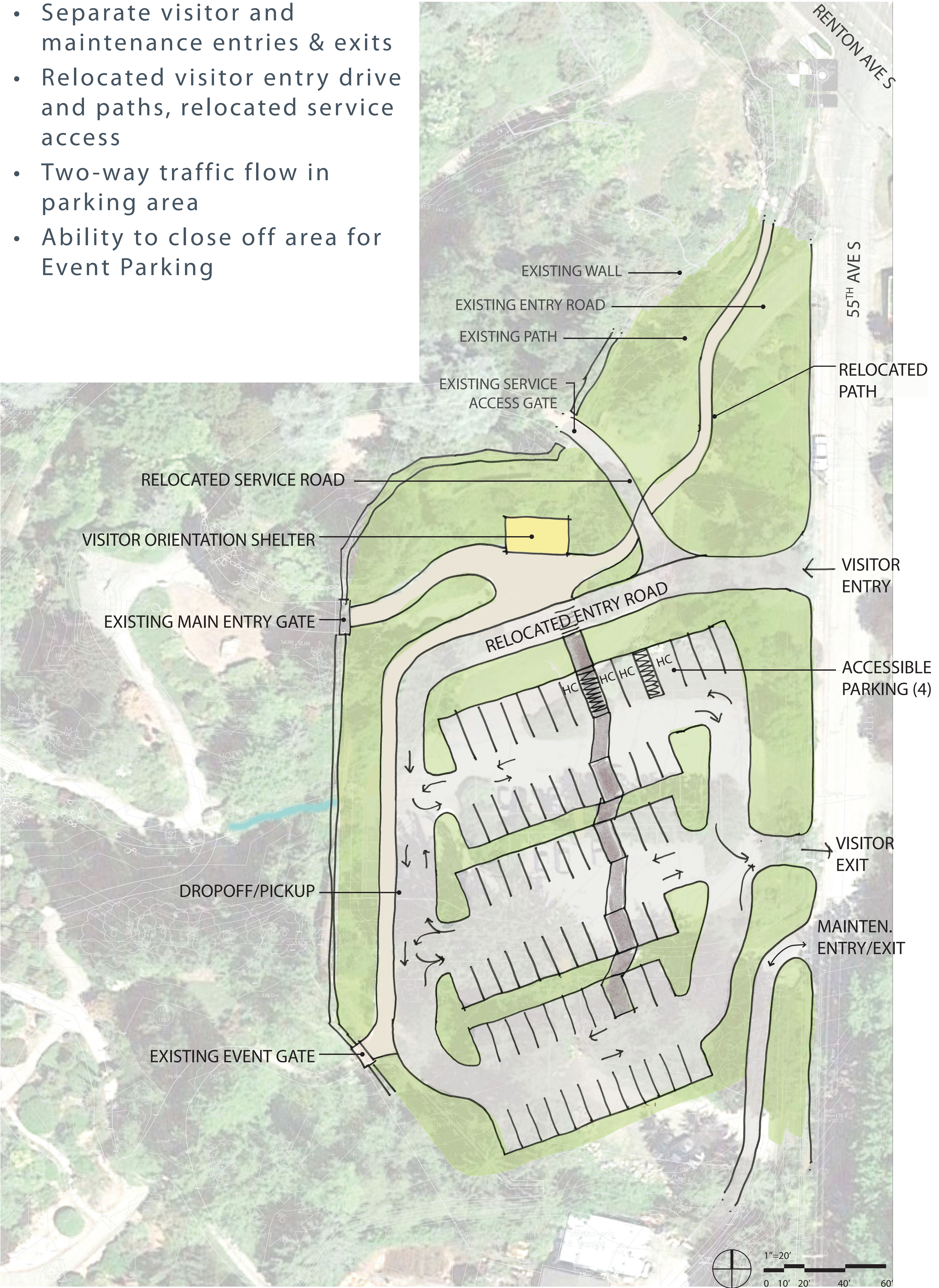
- Separate visitor and maintenance entries and exits
- Service bypass road avoids driving through parking
- Maintains existing road and path alignment
- Internal dropoff area allows fluid movement through entry area; eliminates “airport” feel at Garden arrival



MAIN PARKING 2

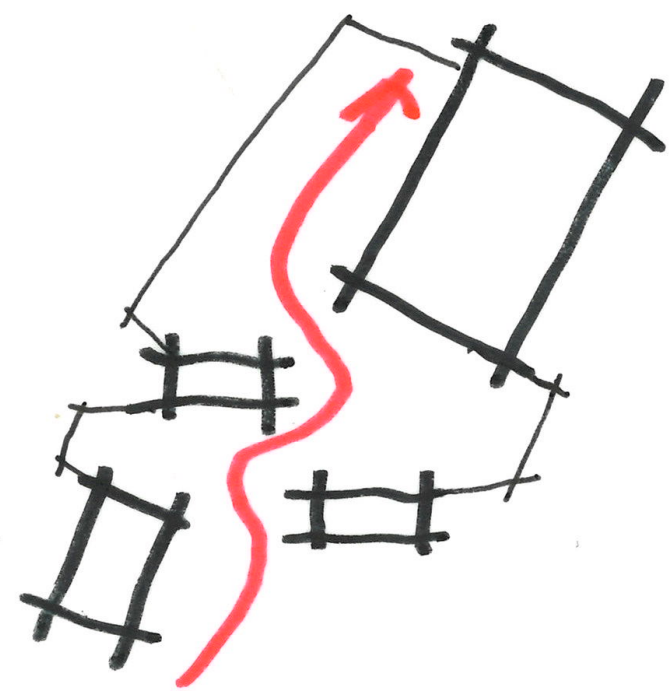
80% MORE PARKING THAN EXISTING

- Separate visitor and maintenance entries & exits
- Relocated visitor entry drive and paths, relocated service access
- Two-way traffic flow in parking area
- Ability to close off area for Event Parking



VISITOR CENTER | LINEAR COURTYARD

SITE CONNECTIONS | EXPLORE



VILLAGE OF STRUCTURES

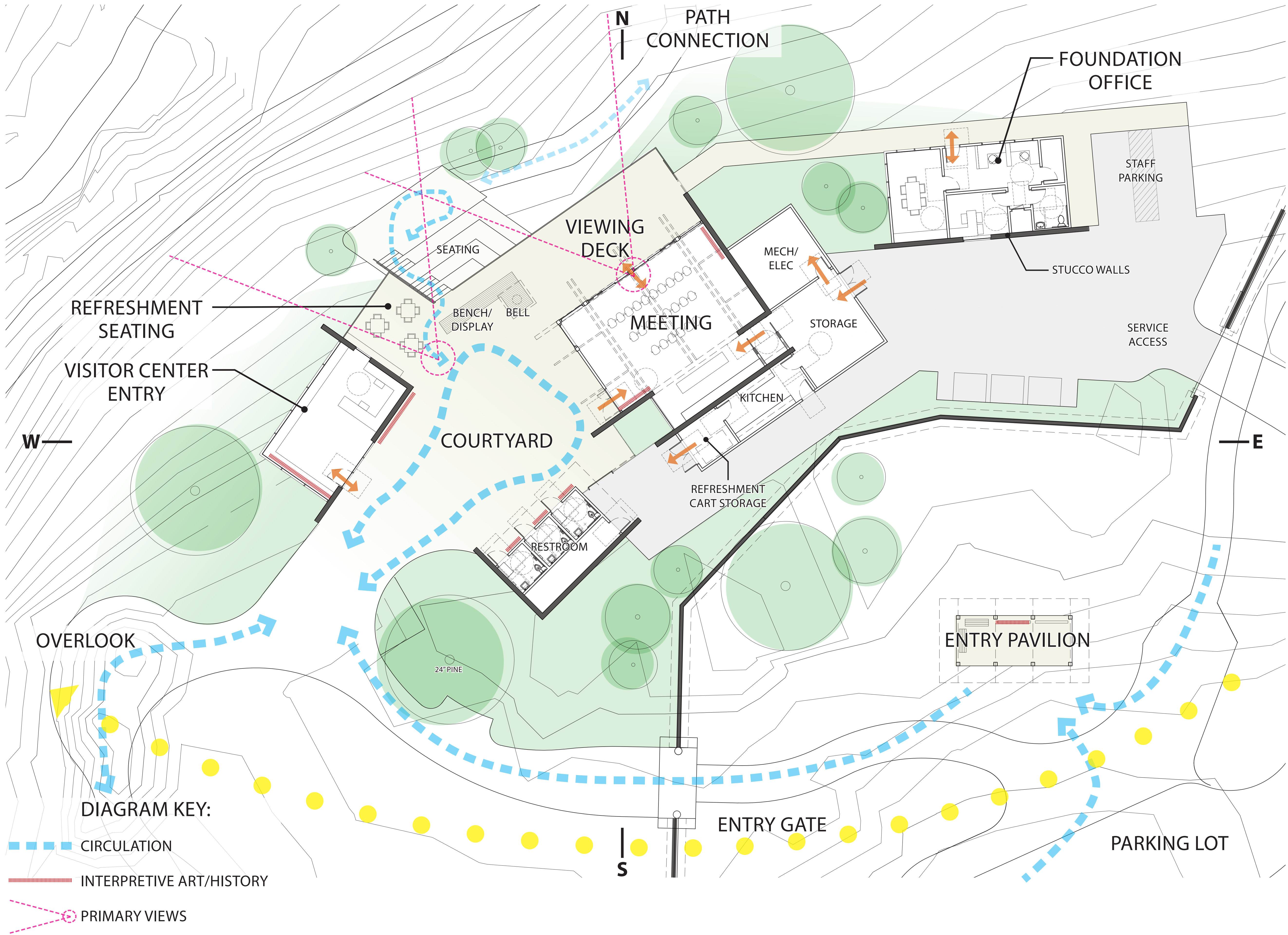
- DISCOVERY
- GARDEN EXPERIENCE
- FLEXIBILITY
- GATHERING | COMMUNITY
- SECURITY | VISIBILITY



THE COURTYARD IS ELONGATED AND PART OF THE GARDEN PATHWAY SYSTEM, CONNECTING TO A REALIGNED SECTION OF THE LOWER PATH TO THE NORTH. THE STRUCTURES ARE POSITIONED TO CREATE SMALLER GARDENS AND COURTYARDS ALONG THE CIRCULATION ROUTE TO REVEAL SPECIAL PLANTINGS AND VIEWS.

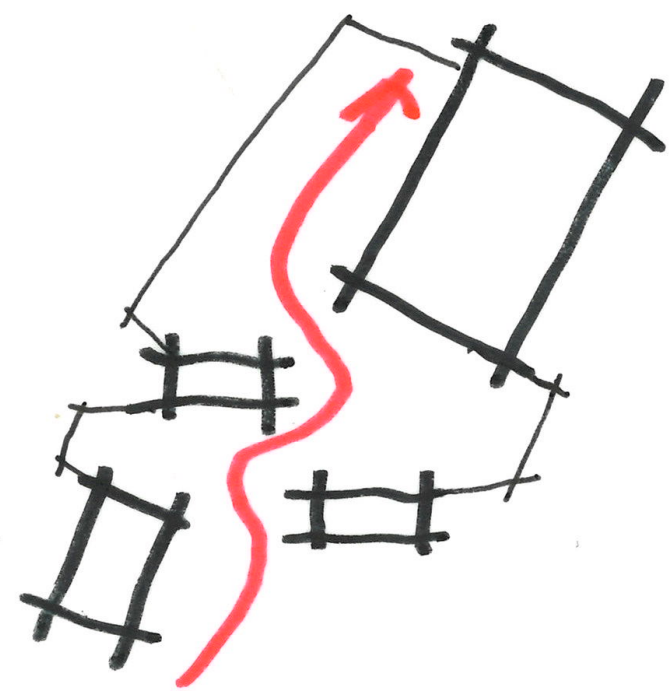
THE STRUCTURES INCORPORATE STUCCO WALLS THAT ENCLOSE PRIVATE AREAS AND RECALL THE CHARACTER OF THE PERIMETER GARDEN WALL, WITH THE REST OF THE EXTERIOR WALLS PRIMARILY CONSISTING OF GLASS.

INTERPRETIVE ART AND HISTORY CAN BE INTEGRATED ON EXTERIOR WALLS AND WITHIN THE MEETING AND ENTRY STRUCTURES.

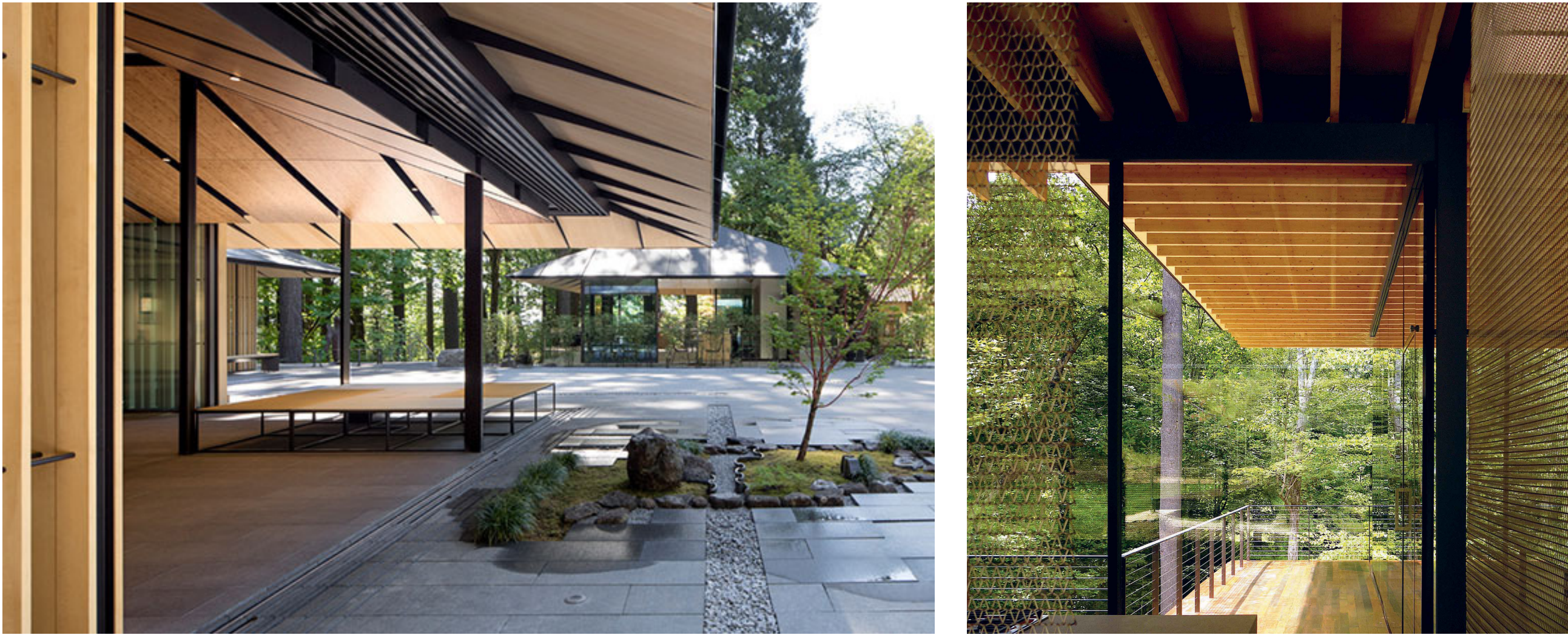


VISITOR CENTER | LINEAR COURTYARD

CHARACTER AND FORM



LARGE ROOF OVERHANGS



CONNECTIONS MEANDER

VILLAGE OF BUILDINGS



CLUSTER OF SMALLER STRUCTURES



FIT BUILT FORM INTO SITE



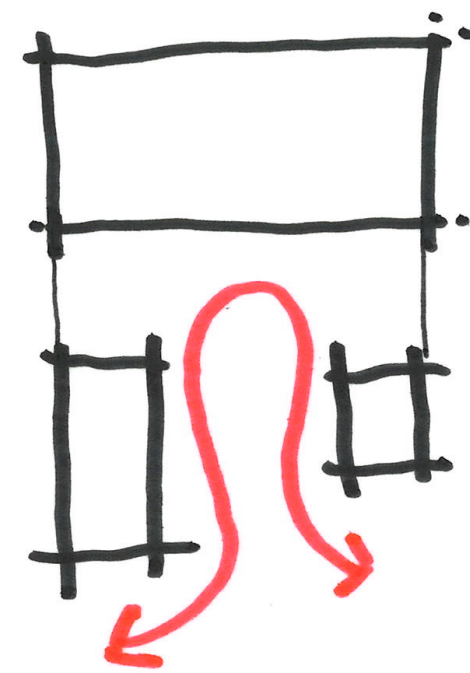
ENGAGE USER WITH NATURE



DISCOVERY

VISITOR CENTER | GARDEN COURTYARD

ENCLOSED | FOCUSED | FLEXIBLE

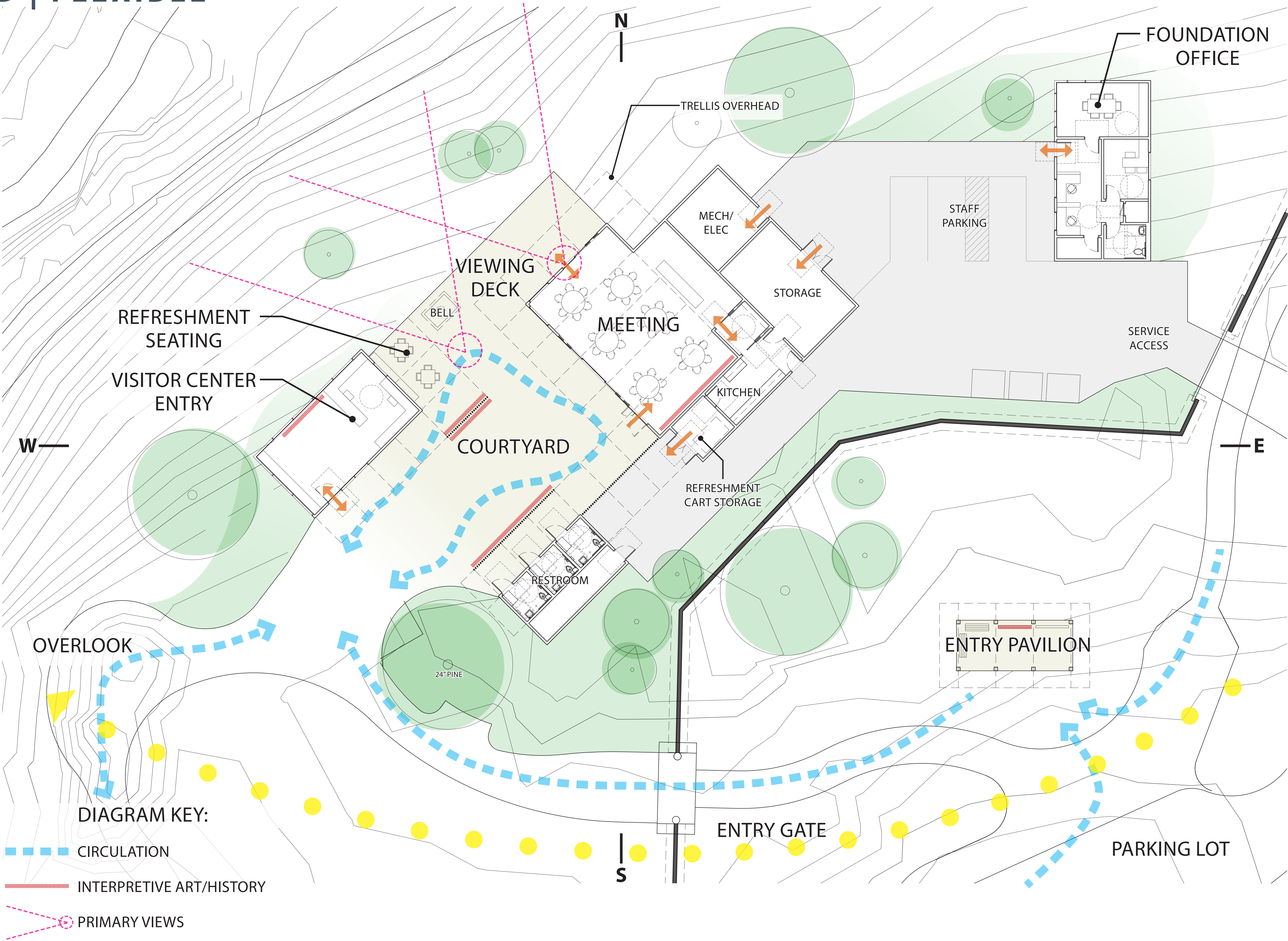
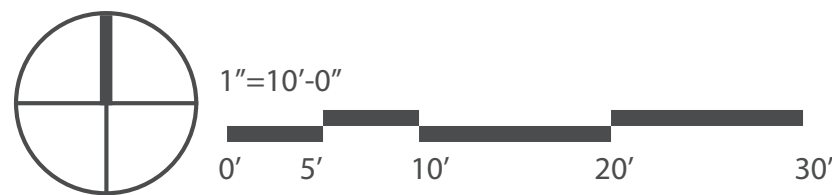


- GATHERING | COMMUNITY
- SECURITY | VISIBILITY
- FLEXIBILITY
- VILLAGE OF STRUCTURES
- GARDEN EXPERIENCE
- DISCOVERY

THE GARDEN COURTYARD IS DEFINED BY STRUCTURES ON THREE SIDES, WITH THE NORTHWEST SIDE OPEN TO THE GARDEN BEYOND. THE COURTYARD FEATURES STONE PAVERS MATCHING THE EXISTING ENTRY GATE PAVING, LARGE BOULDERS FOR INFORMAL SEATING AND TO RECALL THE BOULDER IN THE LAWN AT THE ENTRY PATHWAY, AND SPECIMEN TREES AND PLANTINGS.

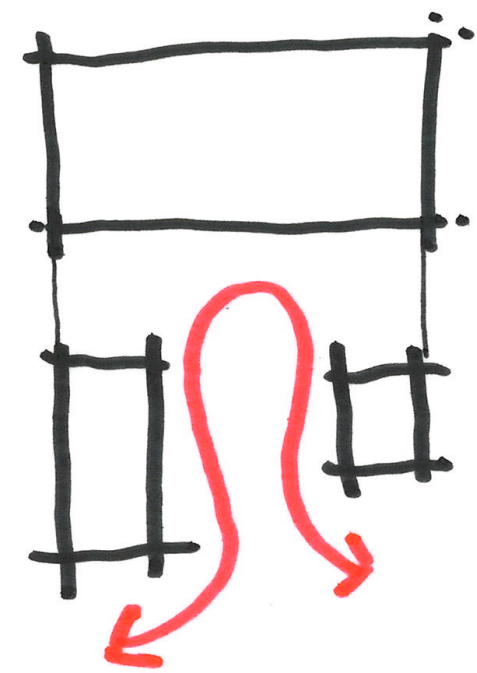
THE STRUCTURES INCORPORATE LARGE TRELLIS ELEMENTS TO EMPHASIZE THE DESIGN INTENT OF THE GARDEN COURTYARD. THE WOOD POSTS, BEAMS AND TRELLISES CAN CONTINUE INTO THE INTERIOR OF THE BUILDINGS TO FURTHER STRENGTHEN THE GARDEN PAVILION NATURE OF THE STRUCTURES AND CONNECT THE INTERIOR WITH THE GARDEN.

INTERPRETIVE ART AND HISTORY CAN BE INTEGRATED INTO VERTICAL SCREENS AND WITHIN THE MEETING AND ENTRY STRUCTURES.



VISITOR CENTER | GARDEN COURTYARD

CHARACTER AND FORM



WOOD/LAYERED/WARM



FLEXIBLE/
OPEN

BACKDROP OF BUILDINGS



OUTDOOR GATHERING SPACES

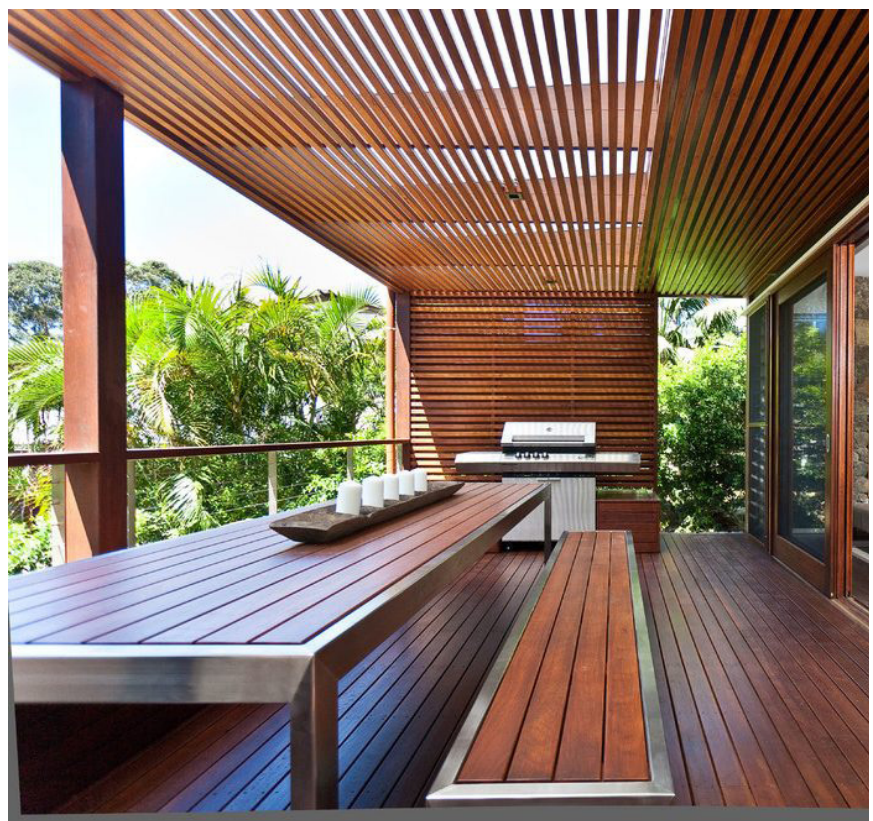
WELCOMING



CONNECTED TO GARDEN



DAPPLED LIGHT



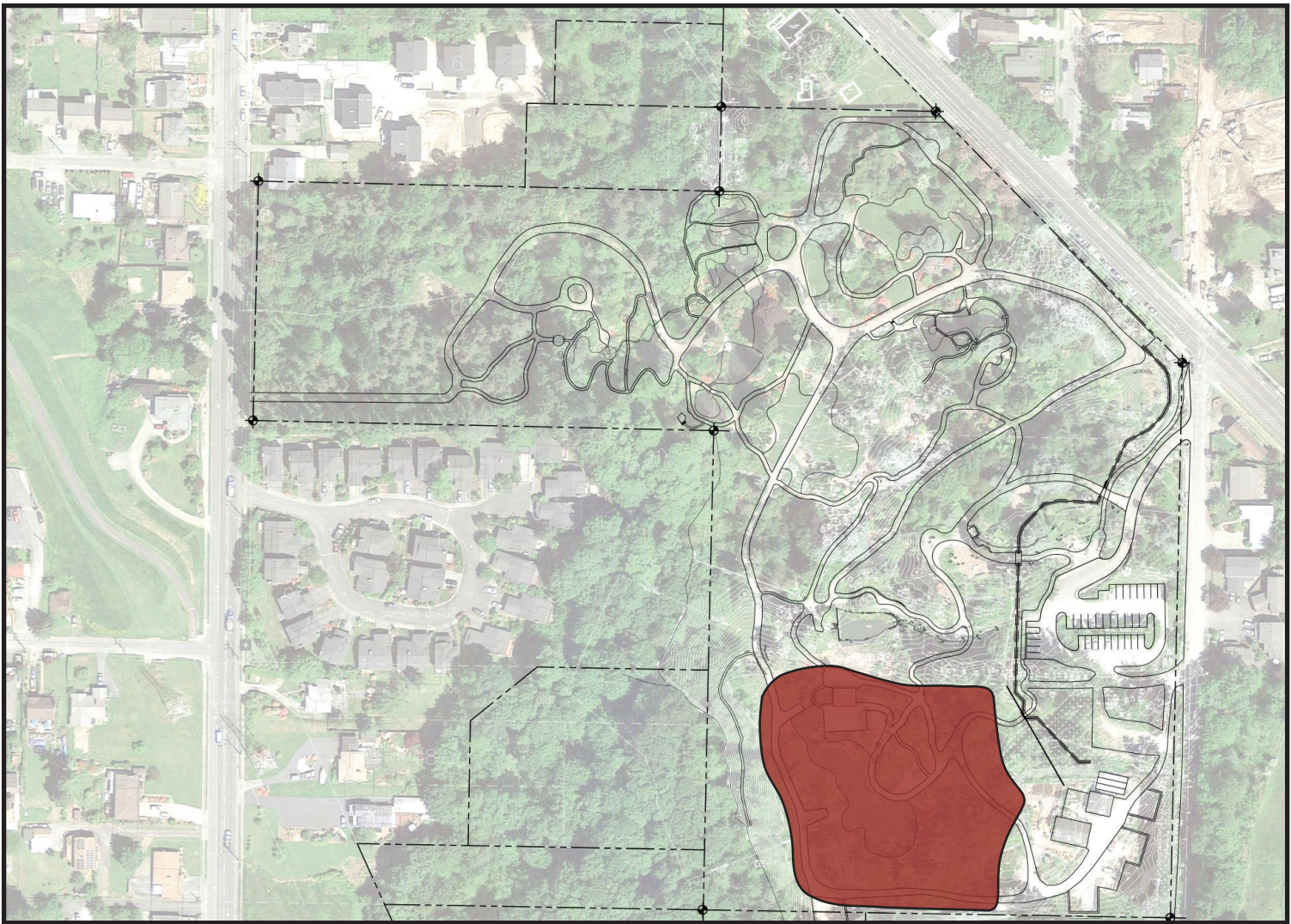
LIGHTER SCREENING/TRELLIS ELEMENTS

KUBOTA TERRACE

AMENITIES | CIRCULATION

- Improved wayfinding through simplified paths; no major realignment
- More direct connection from Event Gate to Terrace
- Expanded picnic area
- Widened service drive access to new restrooms

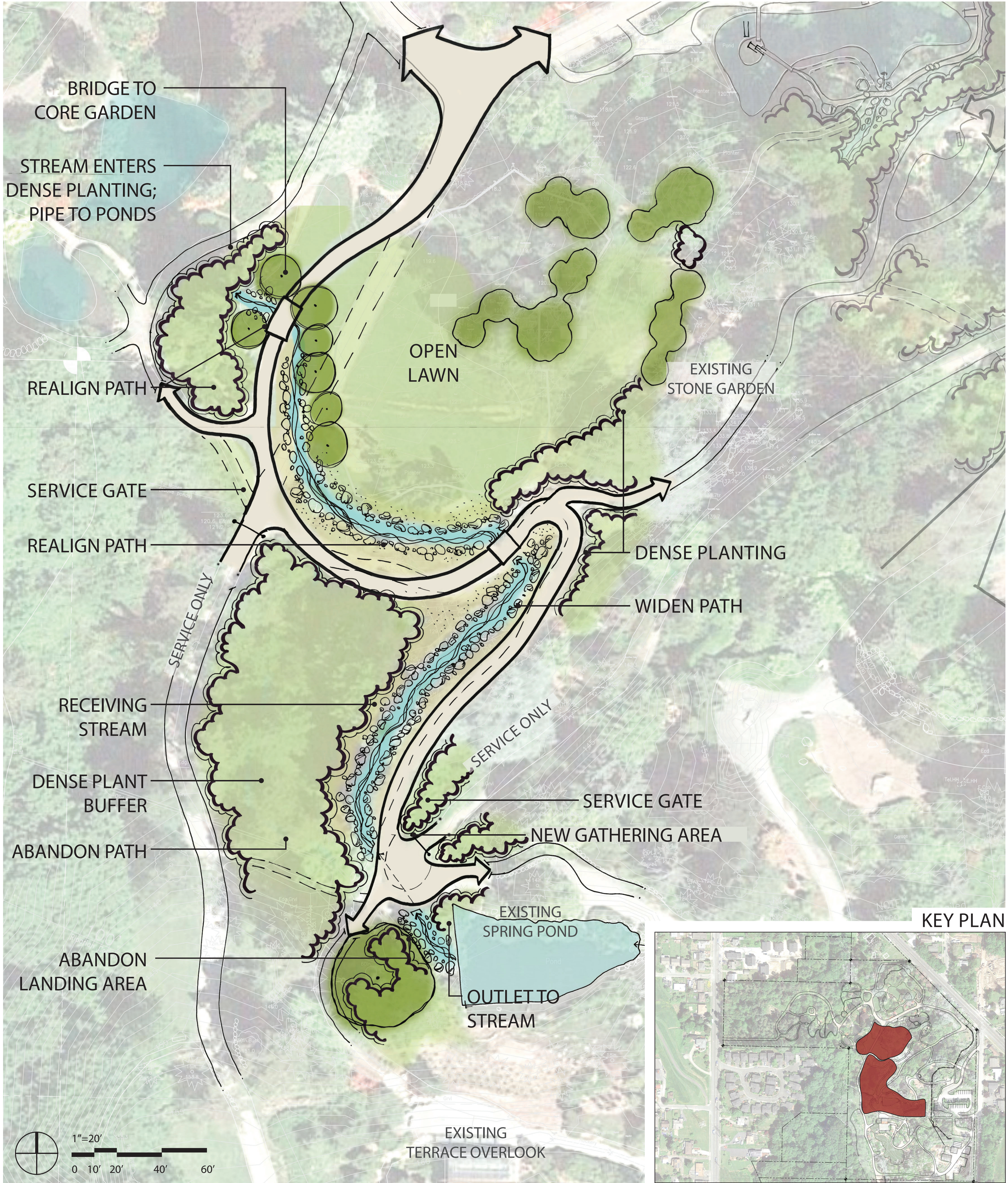
KEY PLAN



RECEIVING STREAM

EXPOSED SYSTEMS | STREAMSIDE EXPERIENCE

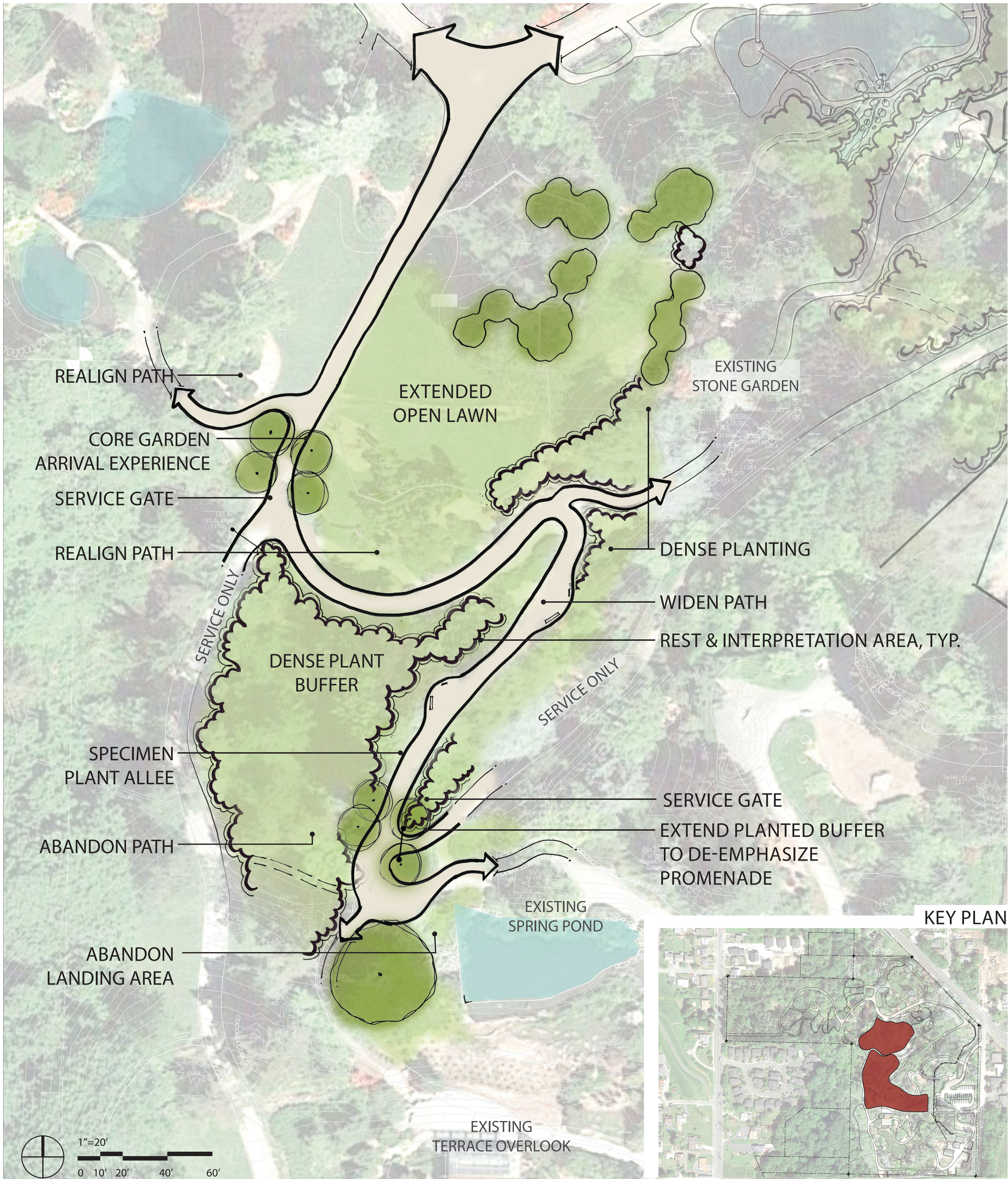
- Strengthens continuity of water experience in the Garden
- Creates arrival experience to Core Garden
- Provides habitat enrichment
- Protects Grand Fir from continued root compaction
- Widened path from Spring Pond to Main Road for “front door” access to Core Garden
- Abandoned path from service road to spring pond



CORE GARDEN INTERPRETIVE ARRIVAL

HISTORY | ARRIVAL

- Specimen plantings draw visitors toward Core Garden arrival
- Access to Promenade is de-emphasized
- Approach to Core Garden offers opportunities for rest and interpretation
- Realigned paths allow for extended lawn
- Abandoned path from service road to spring pond

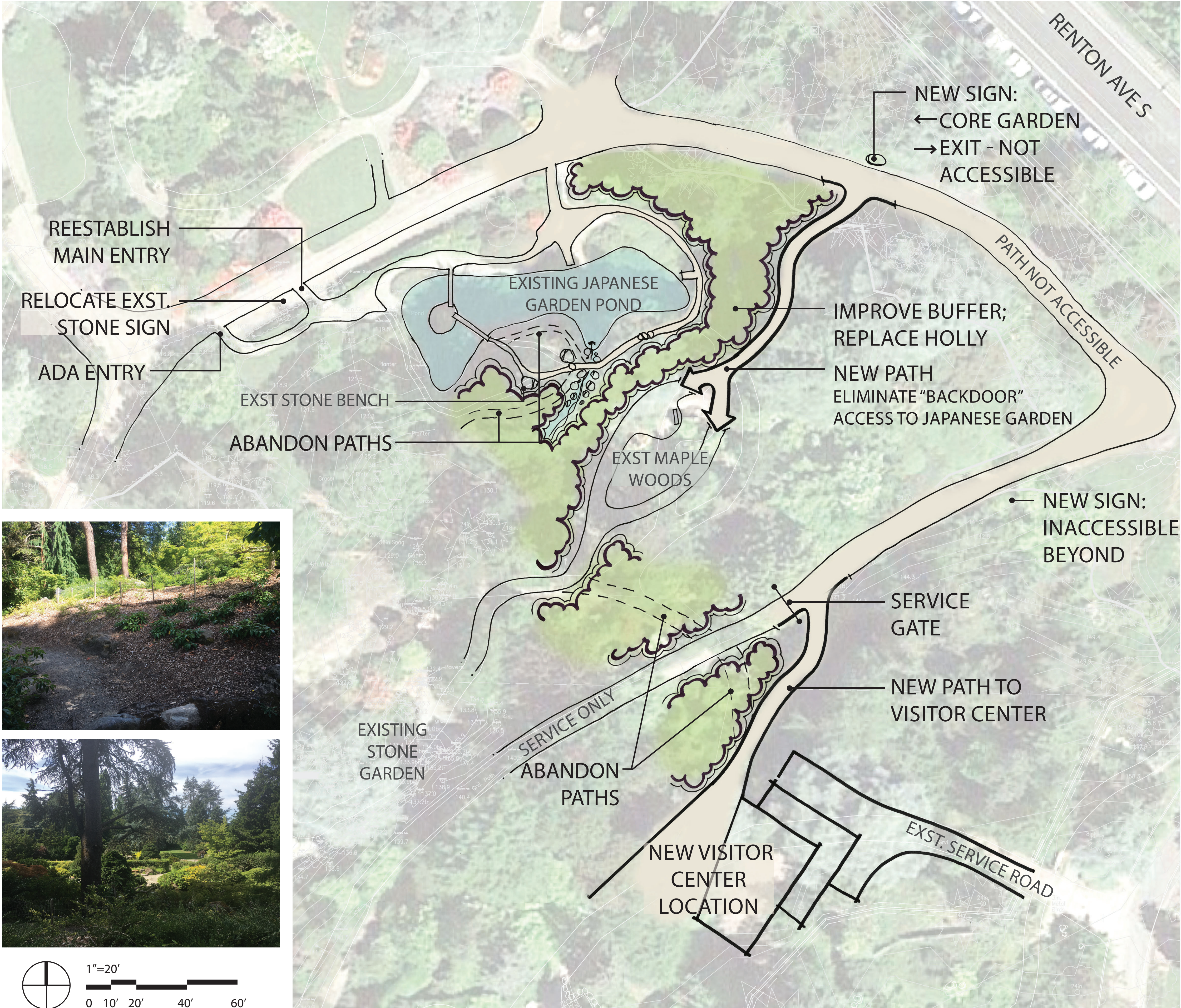
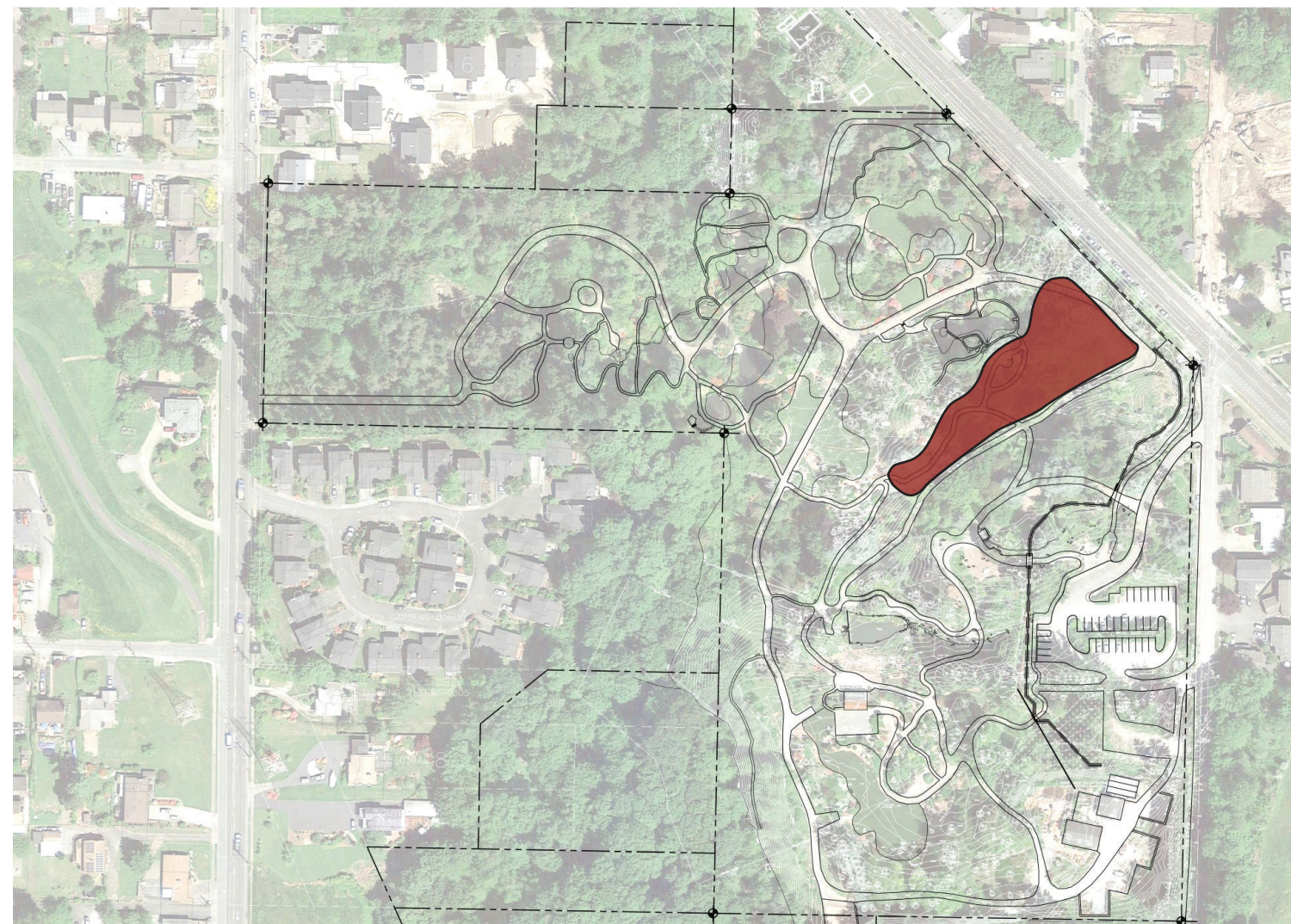


STONE GARDEN & MAPLE WOODS

PROTECT CORE GARDEN INTEGRITY

- Eliminates backdoor access to Japanese Garden; creates fluid experience from Stone Garden through Maple Woods
- Improves south edge of Japanese Garden pond; abandons lower path
- Improves plant buffer between Maple Woods and Japanese Garden
- Restores Japanese Garden pathway planting to original design intent
- Improves wayfinding from Promenade

KEY PLAN

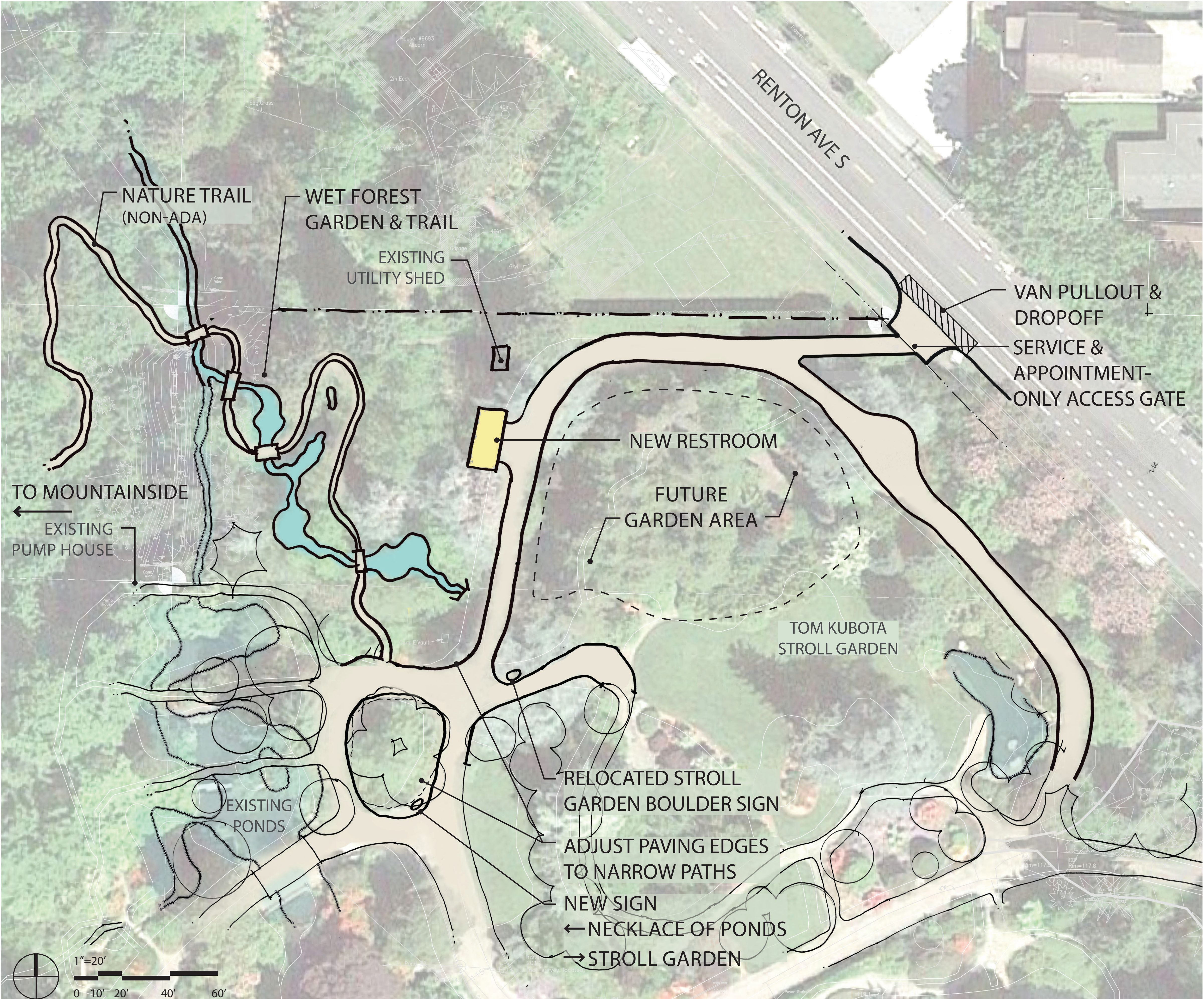
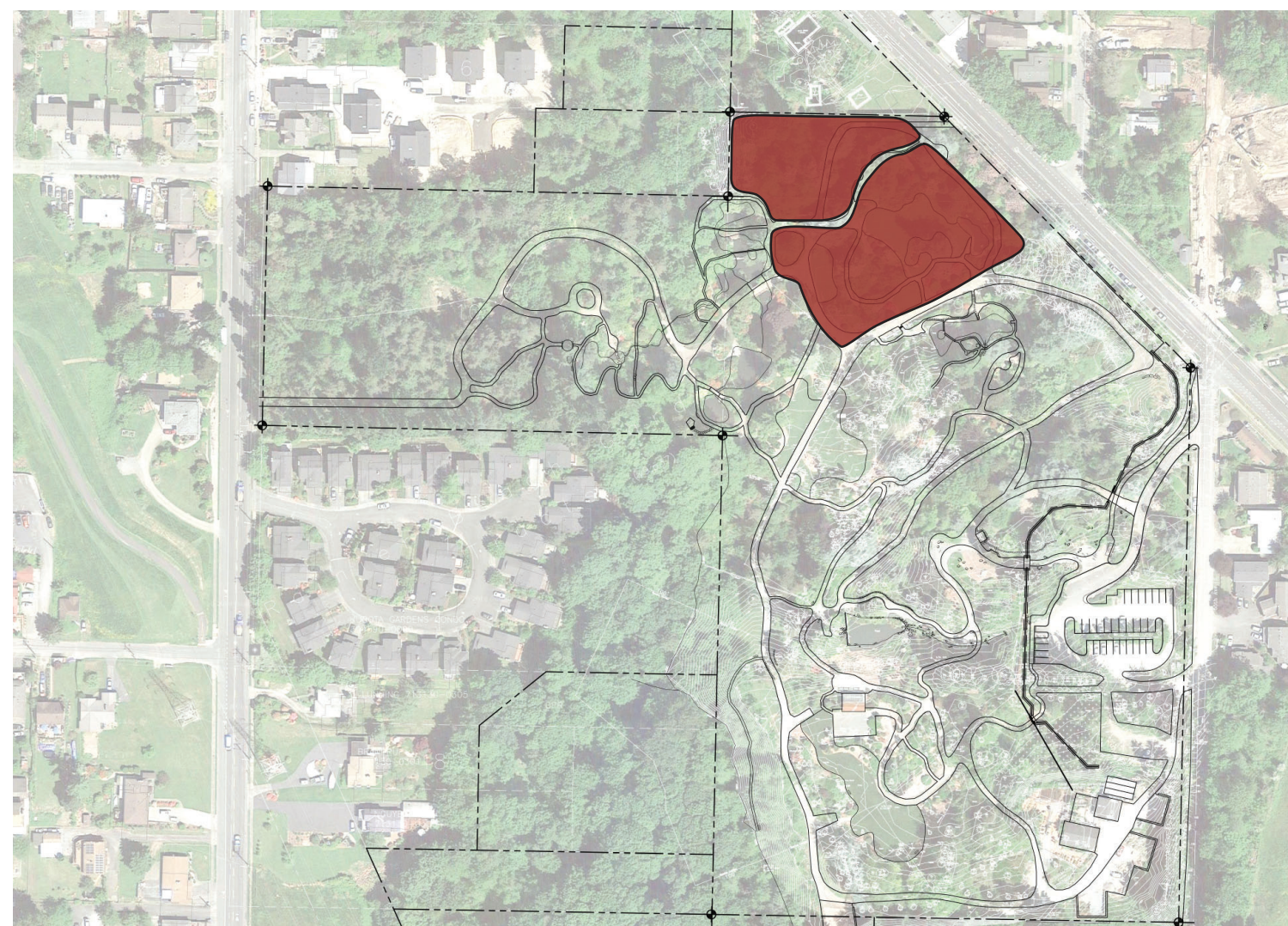


NORTH GARDENS 1

ACCESSIBLE

- New natural area trail
- New double-occupancy restroom and drinking fountain
- Improved path hierarchy; reduced paved areas
- Appointment-only accessible entrance at North Gate
- New/relocated wayfinding boulders

KEY PLAN

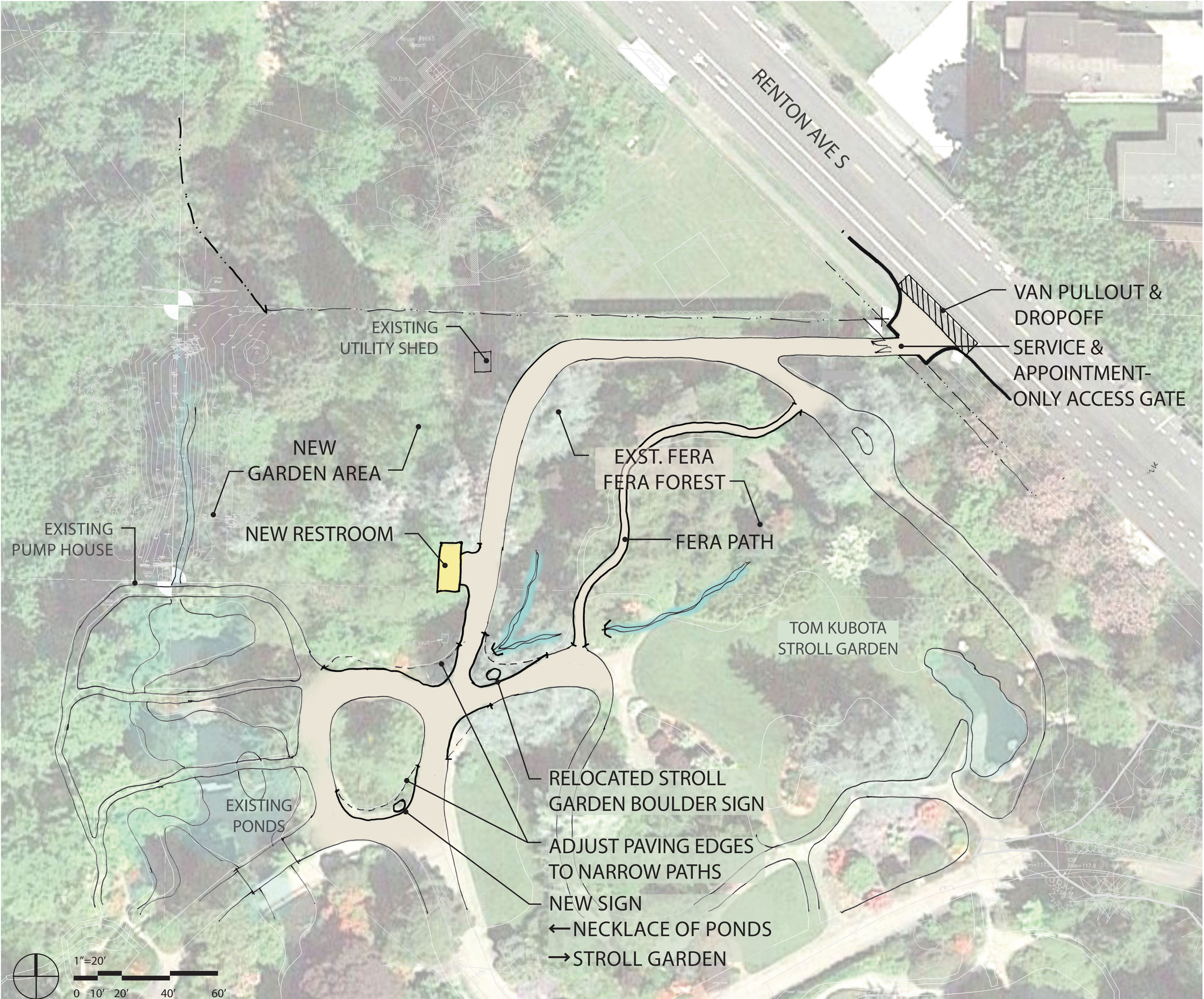
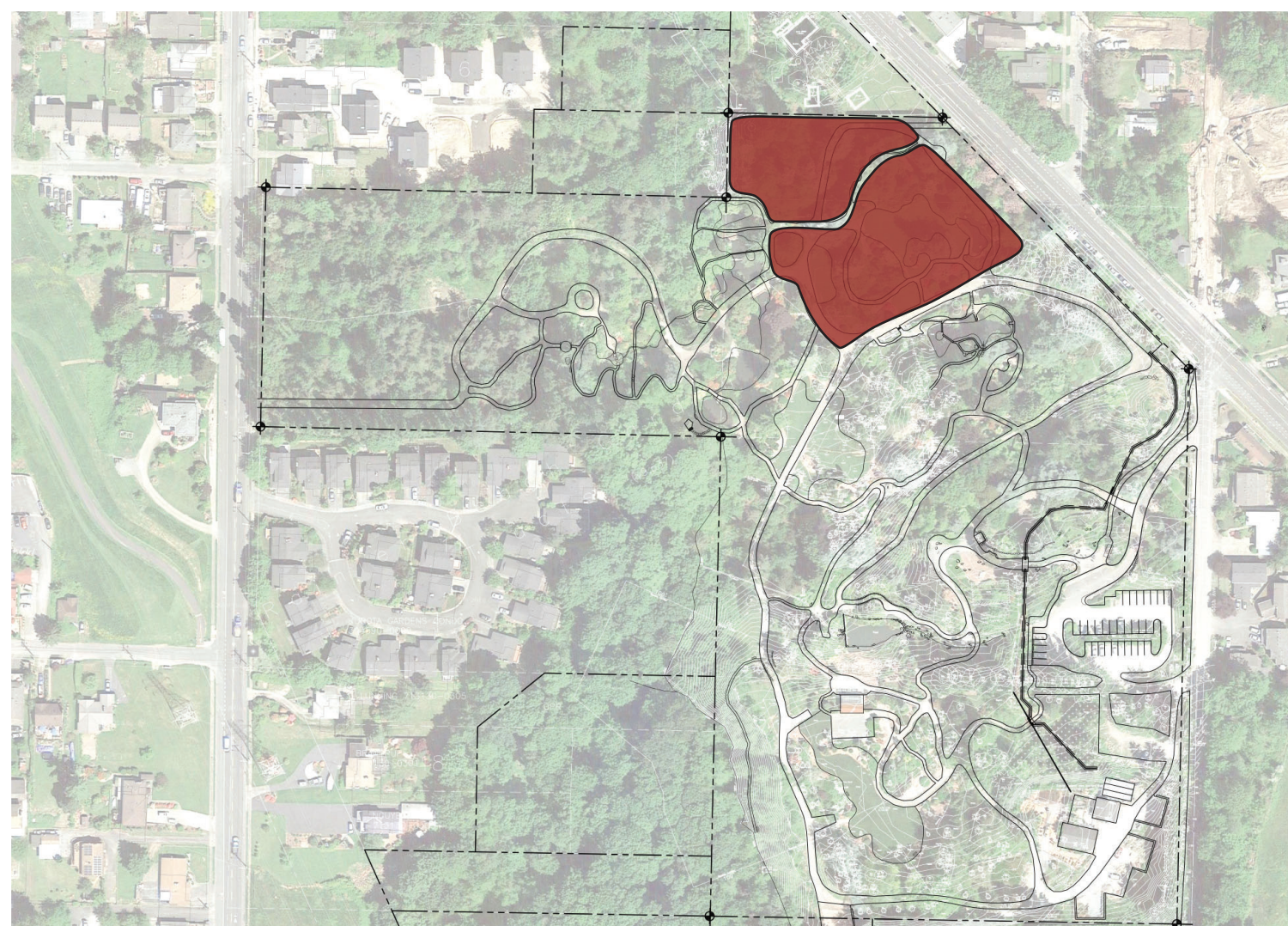


NORTH GARDENS 2

ACCESSIBLE

- Fera Fera path to minimize root compaction
- New drainage channel to reduce flooding of Fera Fera
- New double-occupancy restroom and drinking fountain
- Improved path hierarchy; reduced paved areas
- Appointment-only accessible entrance at North Gate
- New/relocated wayfinding boulders

KEY PLAN

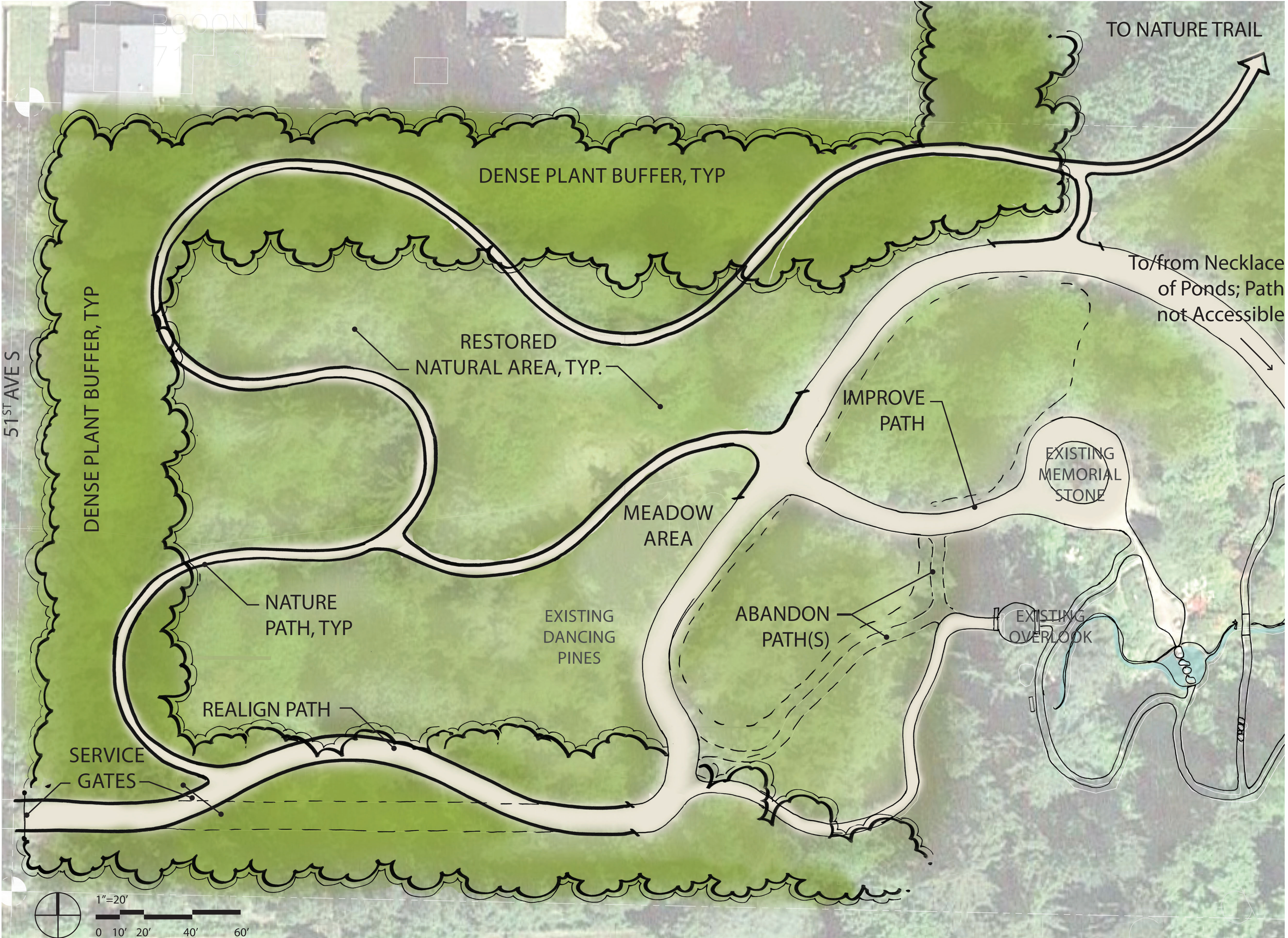
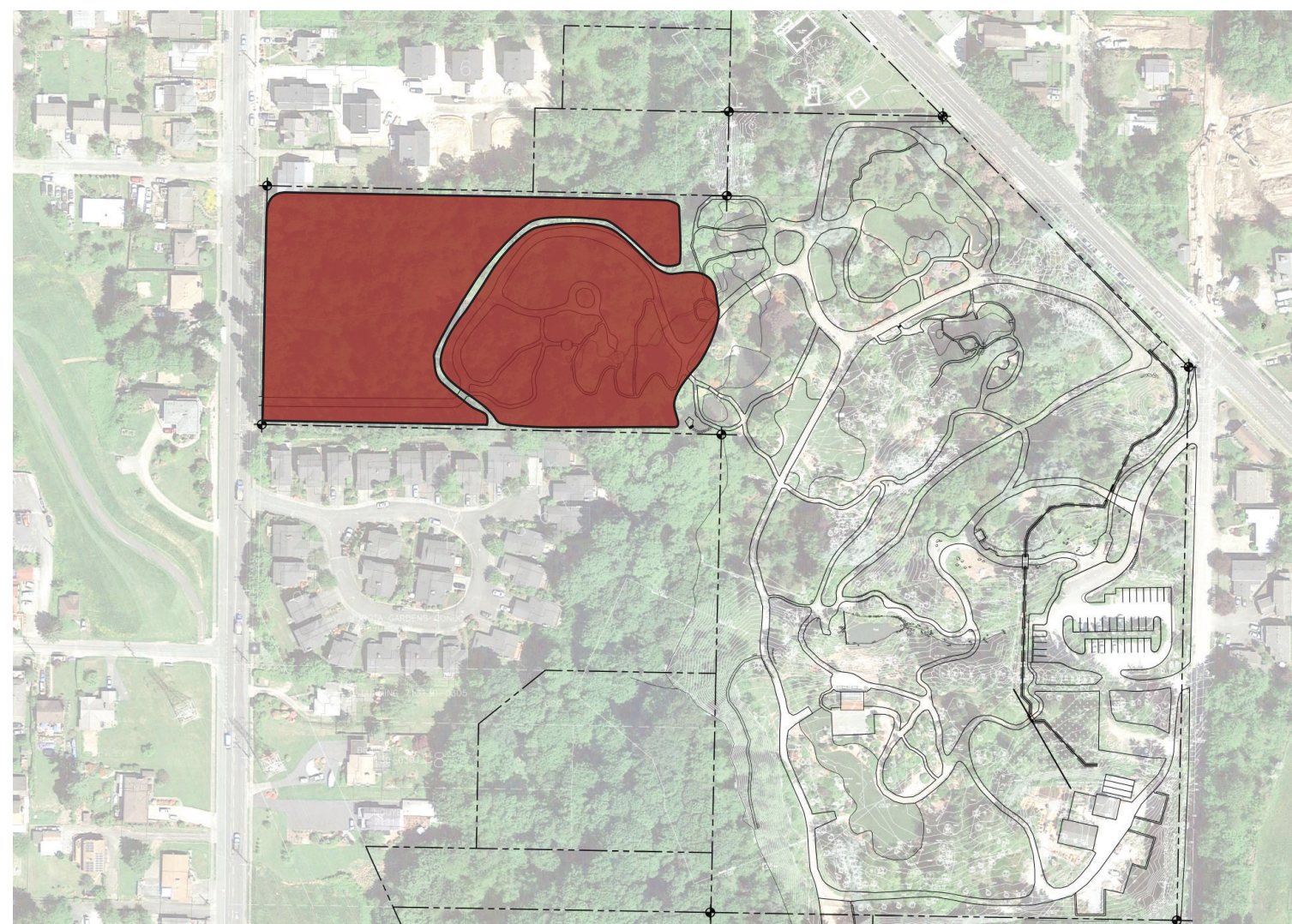


WEST GARDEN: NATURAL AREA RESTORATION

NATURAL AREA | EDUCATION

- Restores undeveloped space to natural forest
- Provides educational opportunities
- Maintains vegetative backdrop and buffer to Garden and adjacent properties
- Promotes native habitats and connectivity with other Kubota Garden Natural Areas

KEY PLAN



WEST GARDEN: NATIVE PLANTS NURSERY

VISITOR ACCESS | NURSERY HOLDING AREA

- Maintains total extent of publicly accessible garden space
- Promotes native habitat restoration in Kubota Garden & Natural Areas
- Activates west side of Garden
- Acknowledges Kubota Garden's history



KEY PLAN

