



FIREHOUSE MINI PARK PLAY AREA RENOVATION



Seattle
Parks & Recreation

Project Website: <https://www.seattle.gov/parks/about-us/projects/firehouse-mini-park-play-area-renovation>

PROJECT TEAM



ASMITA POUDEL

PLANNING & DEVELOPMENT SPECIALIST
SEATTLE PARKS & RECREATION



JESSICA MICHALAK

CAPITAL PROJECTS COORDINATOR
SEATTLE PARKS & RECREATION



AMY LINDEMUTH

SR. LANDSCAPE ARCHITECT
SEATTLE PARKS & RECREATION

PROJECT INFORMATION

Scope of work:

- Replace play equipment with equipment meeting current safety & accessibility standards
- Renovate paving to & around play area to meet current accessibility standards
- Replace existing safety surfacing with new engineered wood fiber safety surfacing
- Update & augment existing site furnishings
- Replace drinking fountain with accessible model
- Aerate & re-seed existing lawn
- Renovate & enhance existing planting as needed

Budget: \$781,000

Schedule:

Planning & Design **Spring 2024 - Winter 2025**

Construction **Spring 2026 - Summer 2026**

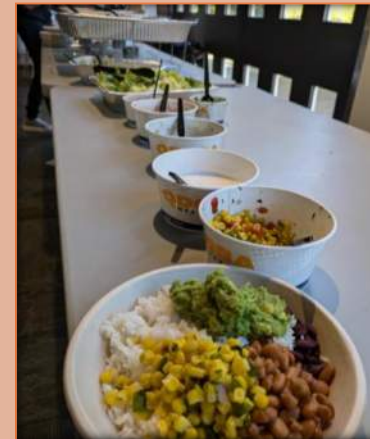


NEIGHBORHOOD CONTEXT WITHIN 1/2 MILE



Firehouse Mini Park PA – Engagement 2

- September 21, 2024 – 10am – 1pm
- Byrd Barr Place
- 32 neighbors attended
- 3 firehouse theme options and 2 nature-inspired theme options
- ONLINE SURVEY – 85 responses from all over Seattle area; 46 from the neighborhood



Firehouse Mini Park PA – Engagement 2

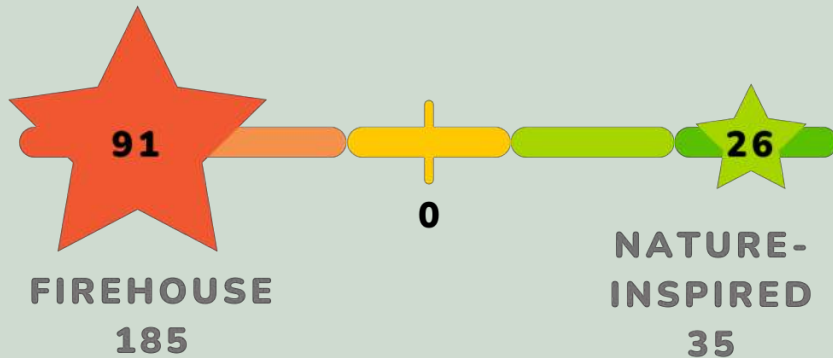
- 62% have kids aged 2-12
- 17% have kids under 2
- Respondents' demographic
 - 77% Caucasian
 - 9% African American
 - 7% Latine
 - Remaining – South Asian, Vietnamese, Japanese, Chinese, Samoan, Native American



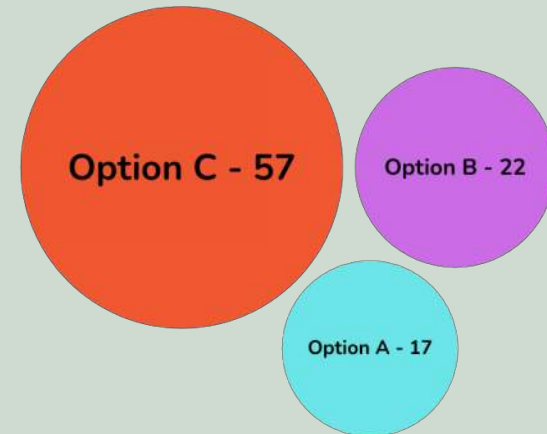
Favorite Theme and Design

FIREHOUSE FOR THE WIN!

What Play Equipment Theme
would you prefer to have at
Firehouse Mini Park?



Which Firehouse Theme
Concept is your overall
favorite?

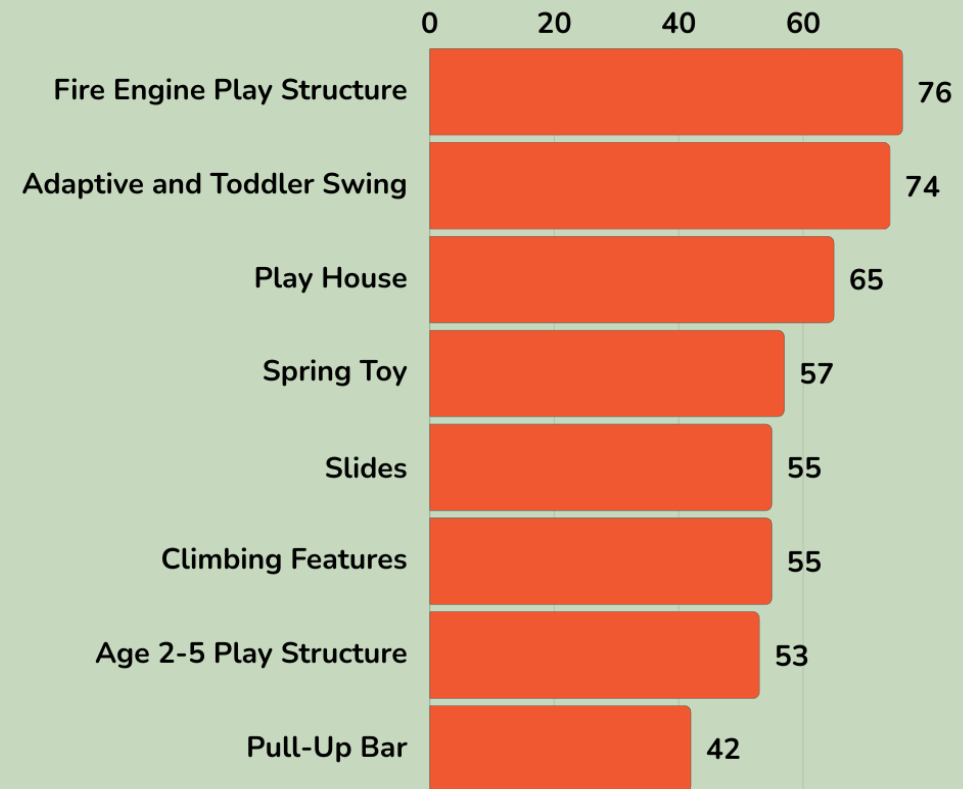


Firehouse Theme

– Option C

- Fire engine play structure (ages 2–5)
- Playhouse
- Adaptive and toddler swings
- Clifford-like spring toy
- Slides, climbing features, pull-up bar
- Tandem swings
- Variety and uniqueness of play features
- Requests: fire-colored elements, steering wheel, stroller/wheelchair-friendly paths

Which play elements do you like in Firehouse Theme Concept C?



OTHER liked DESIGN ELEMENTS

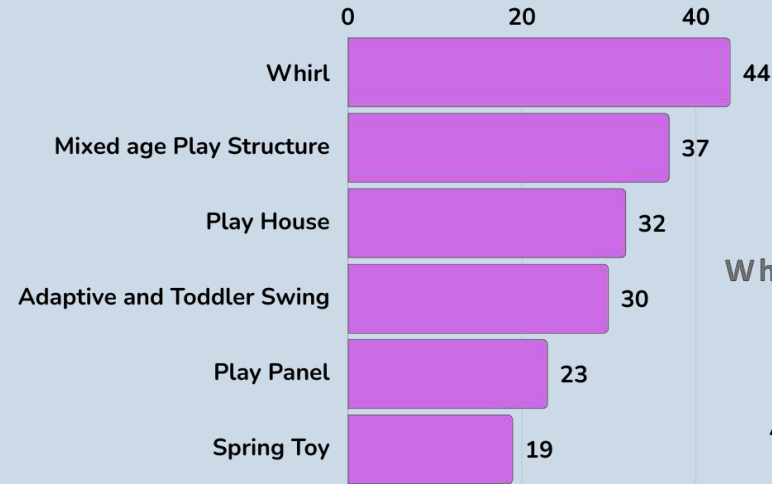
Option B:

- Whirl element
- Request: steppers with wobble + height variety
- Suggest combining B & C designs

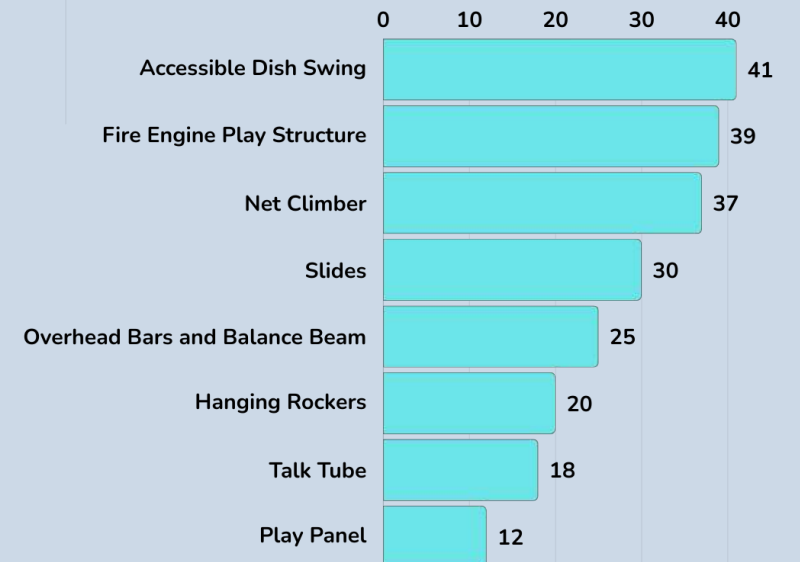
Option A:

- Monkey bars
- Request: make them longer for more challenge

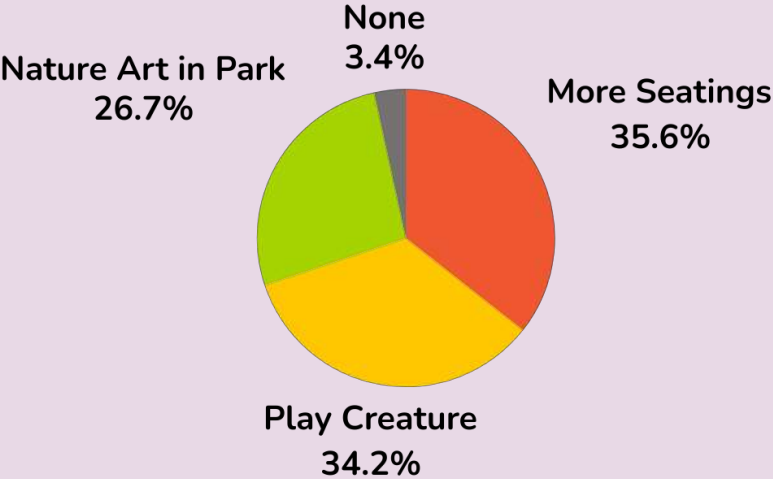
Which play elements do you like in
Firehouse Theme Concept B?



Which play elements do you like in
Firehouse Theme Concept A?



If budget allows, what additional potential items would you like to see in your Firehouse Mini Park?



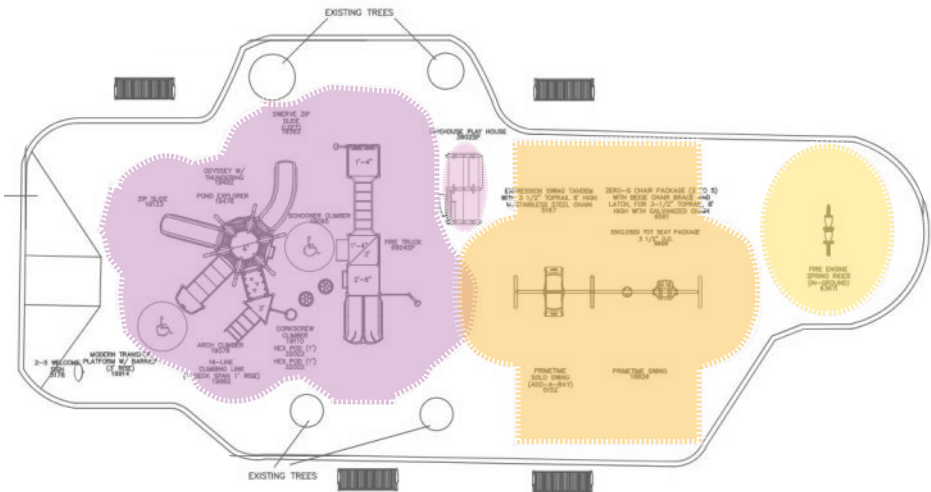
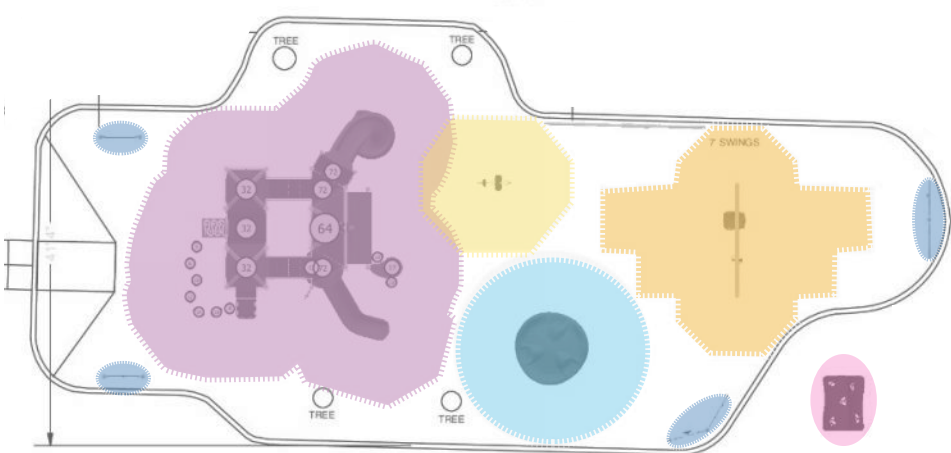
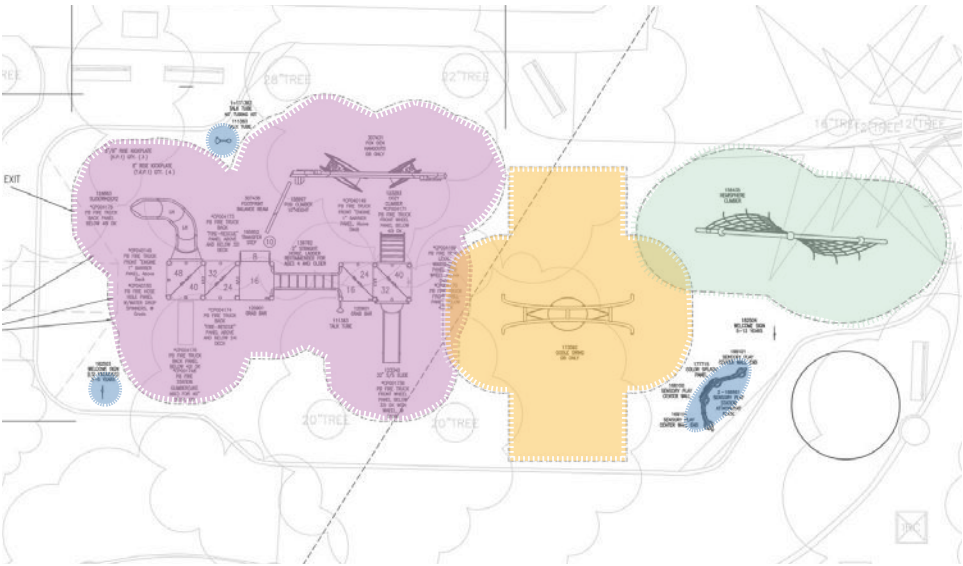
POTENTIAL ADDITIONS

ADDITIONAL REQUESTS

- Steering wheel, balance beam, climbing wall, seesaw, zip line, net bridge
- More motion play (spinning, swinging, climbing)
- Paths for strollers and wheelchairs
- Cognitive-friendly play design
- Year-round drinking fountain
- Shade, restroom, native plants
- Low wall to allow ball play on lawn



PLAY EQUIPMENT | FIREHOUSE THEME OPTIONS



OPTION A

- Age 2-5 play equipment:
 - Fire engine play structure
 - (2) slides
 - Overhead bars, balance beam, (1) climber
 - Educational play panels
 - Play panels & talk tubes
- Age 5-12 play equipment:
 - Net climber
 - Sensory play panel
- Proposed swing:
 - (1) accessible dish swing



OPTION B

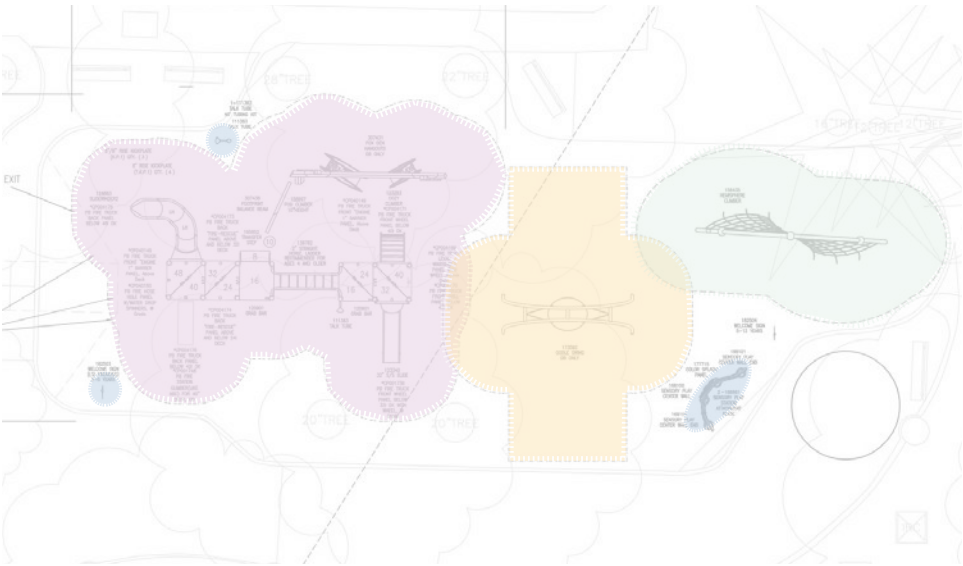
- Age 2-12 play equipment:
 - Fire engine play structure
 - (2) slides
 - Whirl
 - Springer toy
 - Playhouse
 - Educational play panels
- Proposed swing:
 - (1) accessible adaptive swing
 - (1) tot swing



OPTION C

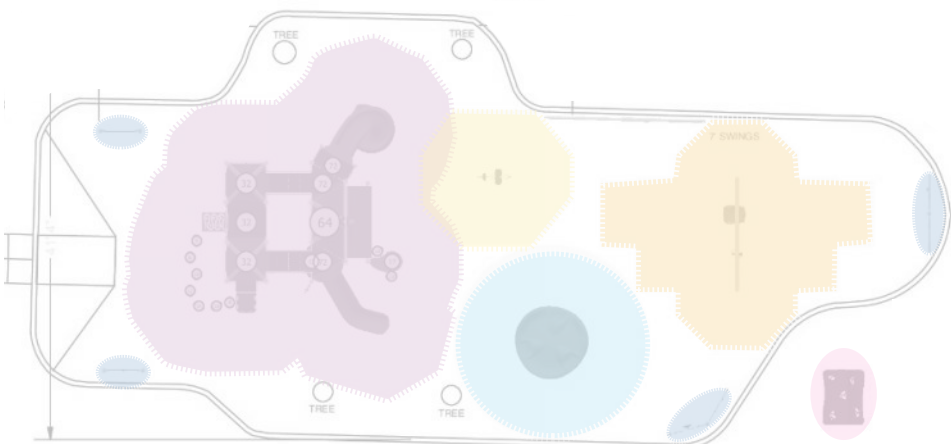
- Age 2-5 play equipment:
 - Fire engine play structure
 - (3) slides, (3) climbing features
 - Pullup bar
 - Spring toy
 - Playhouse
- Proposed swing:
 - (1) accessible adaptive swing
 - (1) tot swing
 - (1) inclusive 2-person tandem swing

PLAY EQUIPMENT | PREFERRED OPTION



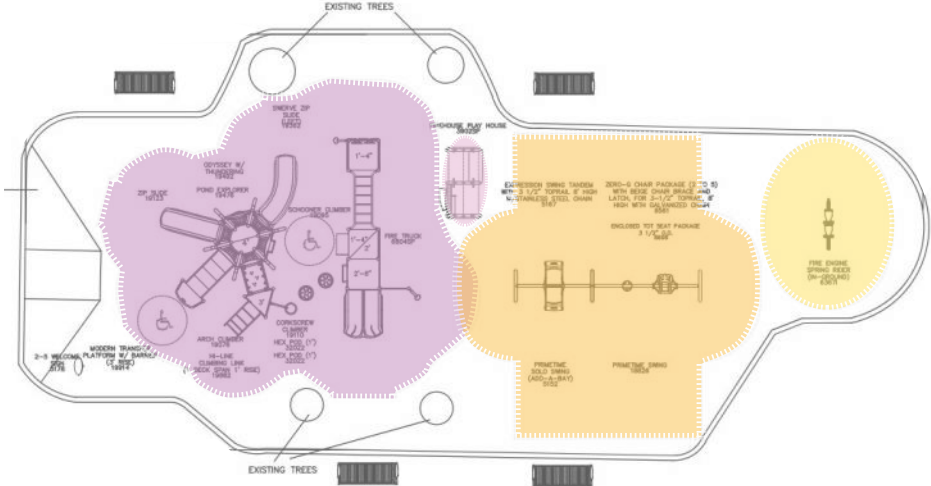
OPTION A

- Age 2-5 play equipment:
 - Fire engine play structure
 - (2) slides
 - Overhead bars, balance beam, (1) climber
 - Educational play panels
 - Play panels & talk tubes
- Age 5-12 play equipment:
 - Net climber
 - Sensory play panel
- Proposed swing:
 - (1) accessible dish swing



OPTION B

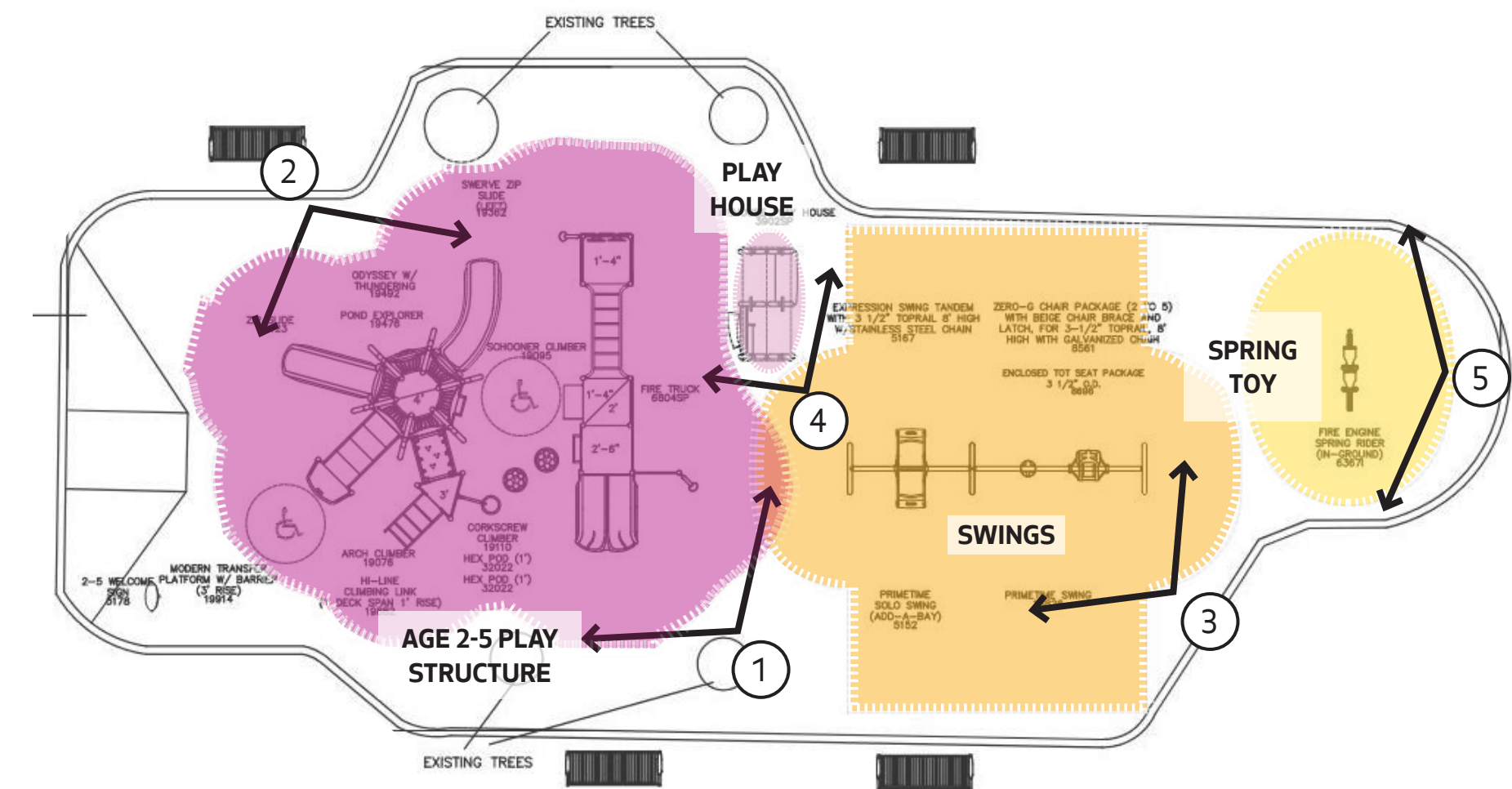
- Age 2-12 play equipment:
 - Fire engine play structure
 - (2) slides
 - Whirl
 - Springer toy
 - Playhouse
 - Educational play panels
- Proposed swing:
 - (1) accessible adaptive swing
 - (1) tot swing



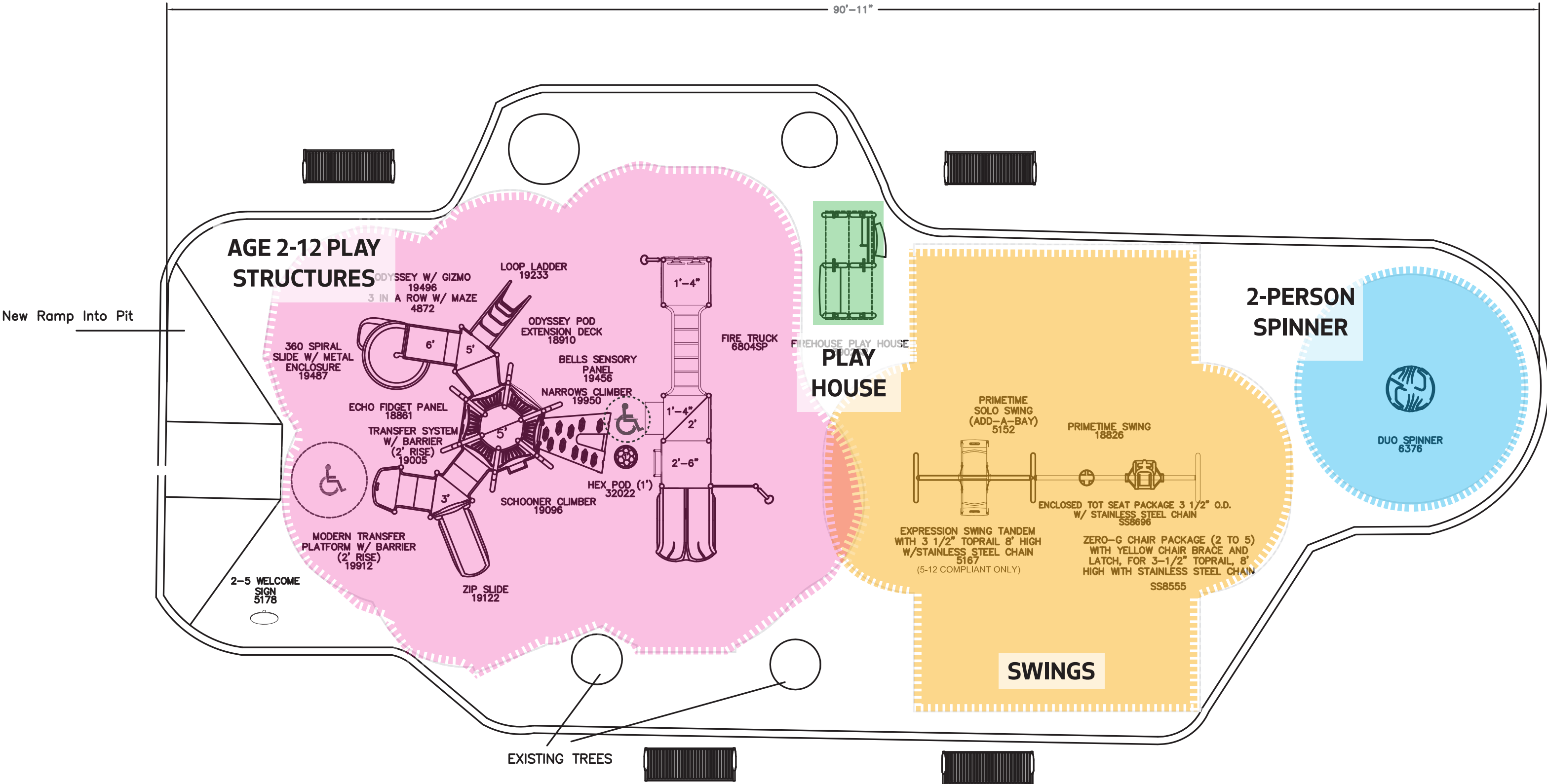
OPTION C

- Age 2-5 play equipment:
 - Fire engine play structure
 - (3) slides, (3) climbing features
 - Pullup bar
 - Spring toy
 - Playhouse
- Proposed swing:
 - (1) accessible adaptive swing
 - (1) tot swing
 - (1) inclusive 2-person tandem swing

PLAY EQUIPMENT | PREFERRED OPTION



PLAY EQUIPMENT | PREFERRED OPTION



PLAY EQUIPMENT | PREFERRED OPTION



PLAY EQUIPMENT | PREFERRED OPTION



- age 2-12 Small Tower Structure
upper left & below, includes two slides, multiple climbers/ladders, transfer platform
- age 2-5 fire truck w/overhead bars & slides
lower left, includes steering wheel for imaginative play



PLAY EQUIPMENT | PREFERRED OPTION



- Swings
upper left, includes adaptive/accessible swing, tot swing, & tandem swing
- age 2-5 firehouse
lower left, imaginative play house
- spinner
below, tandem spinning feature



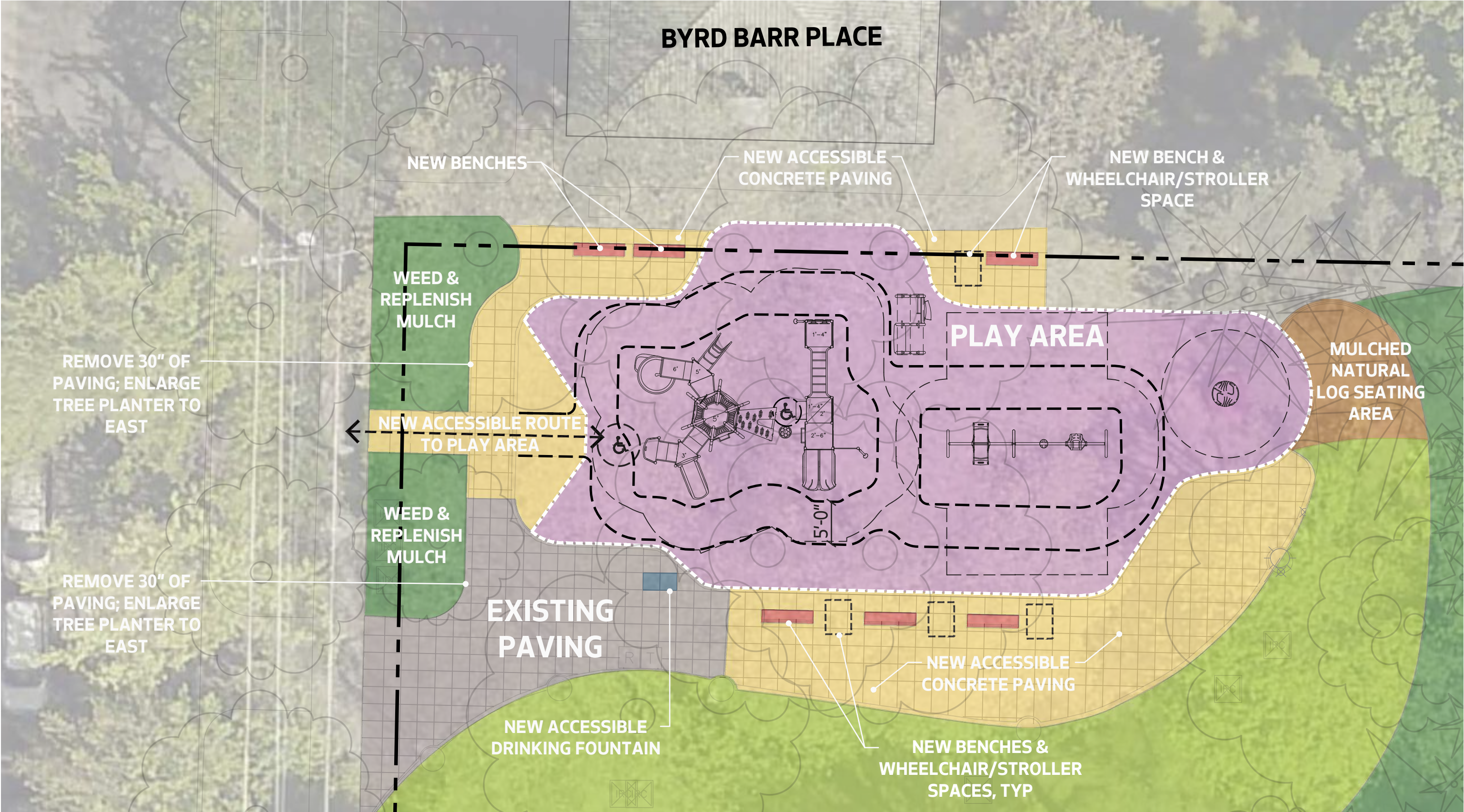
OVERALL SITE PLAN



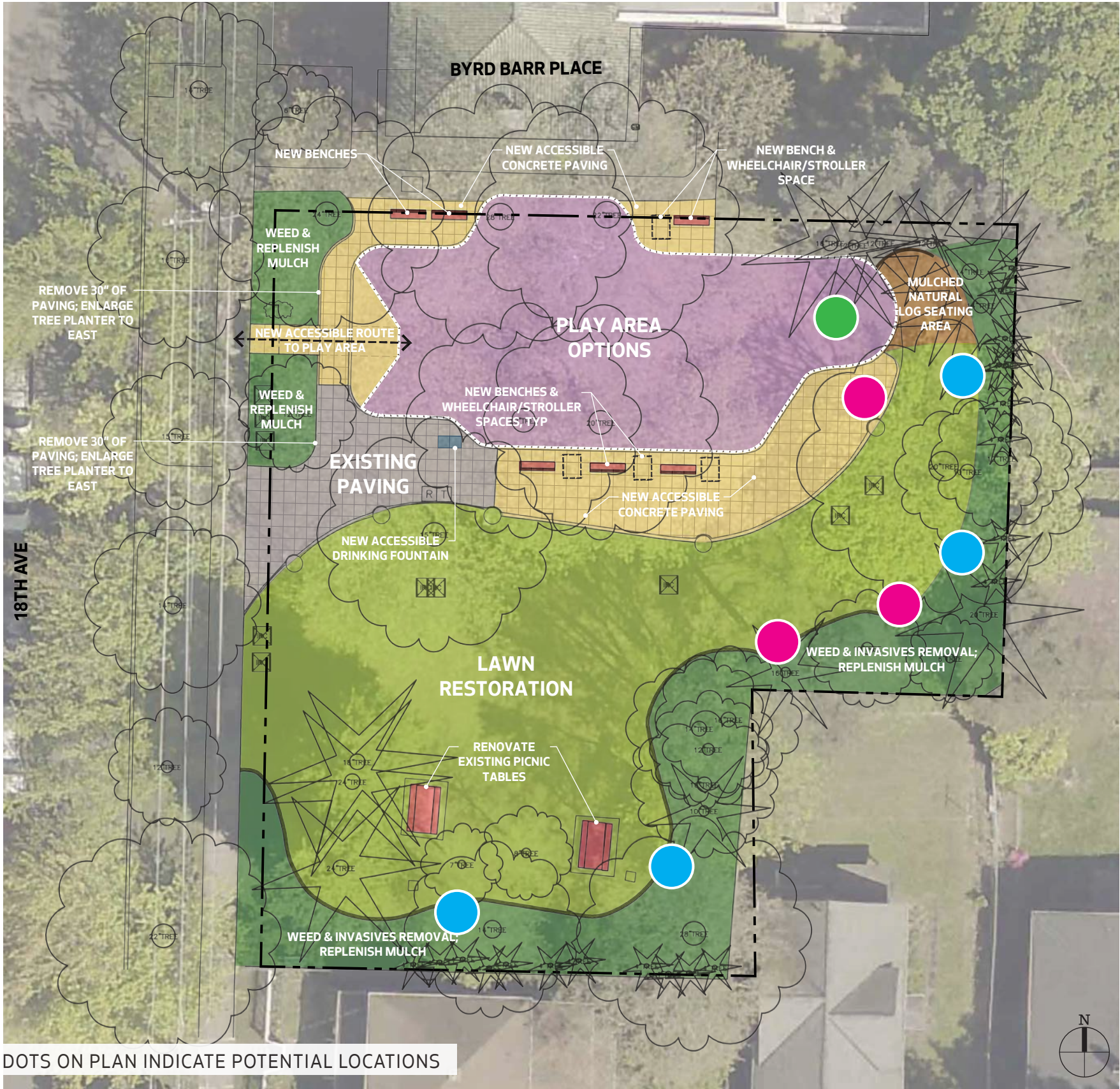
Included features:

- Play equipment preferred by community
- New accessible route to play area
- New accessible play area ramp
- New paving to meet current accessibility standards
- Existing benches replaced with new standard park benches
- Drinking fountain replaced with accessible model
- Picnic tables renovated with new tops & seats
- Existing lawn aerated & re-seeded
- Existing planting beds weeded, mulched & invasives addressed
- Natural log seating area adjacent to play

SITE PLAN ENLARGEMENT



IF BUDGET ALLOWS, WHICH ONE IS YOUR PRIORITY?



Pink dot MORE SEATING LOCATIONS WITH NEW STANDARD BENCHES & TABLES

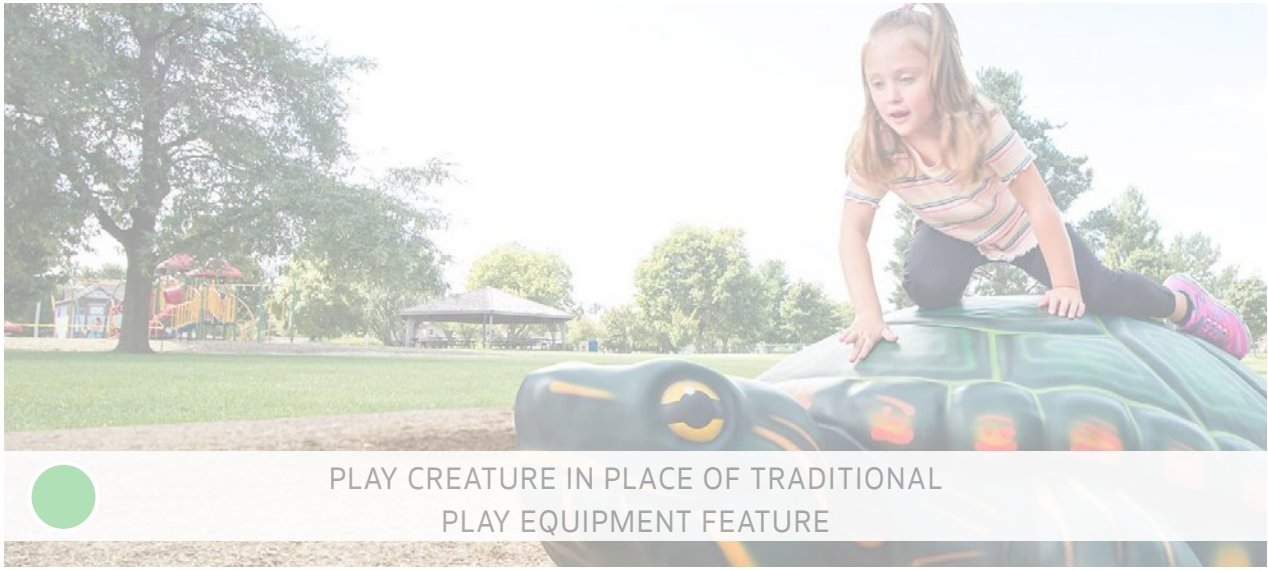
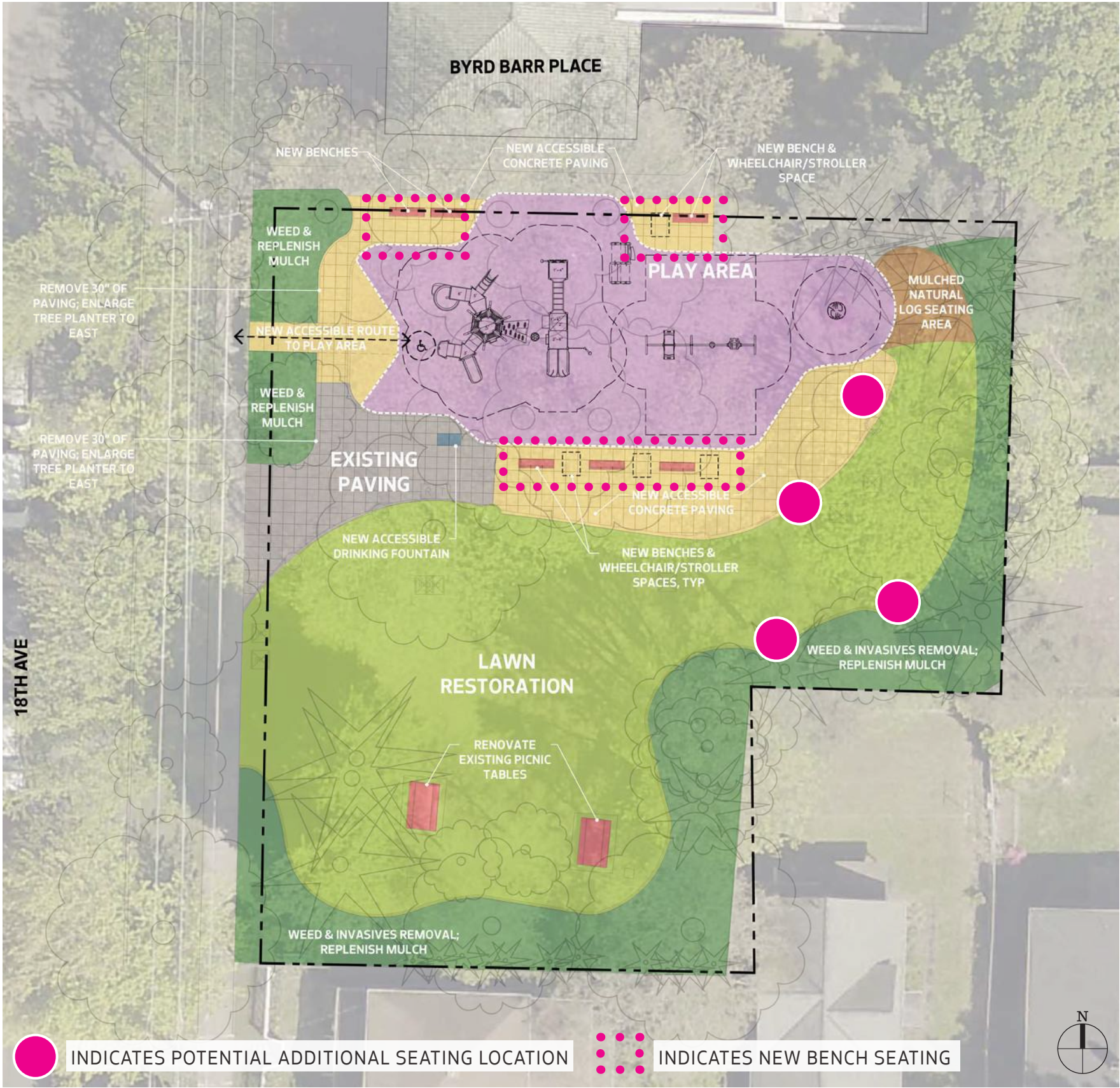


Blue dot SEEK AND FIND NATURE ART TO DISCOVER IN THE PARK



Green dot PLAY CREATURE IN PLACE OF TRADITIONAL PLAY EQUIPMENT FEATURE

IF BUDGET ALLOWS, COMMUNITY PREFERS MORE SEATING



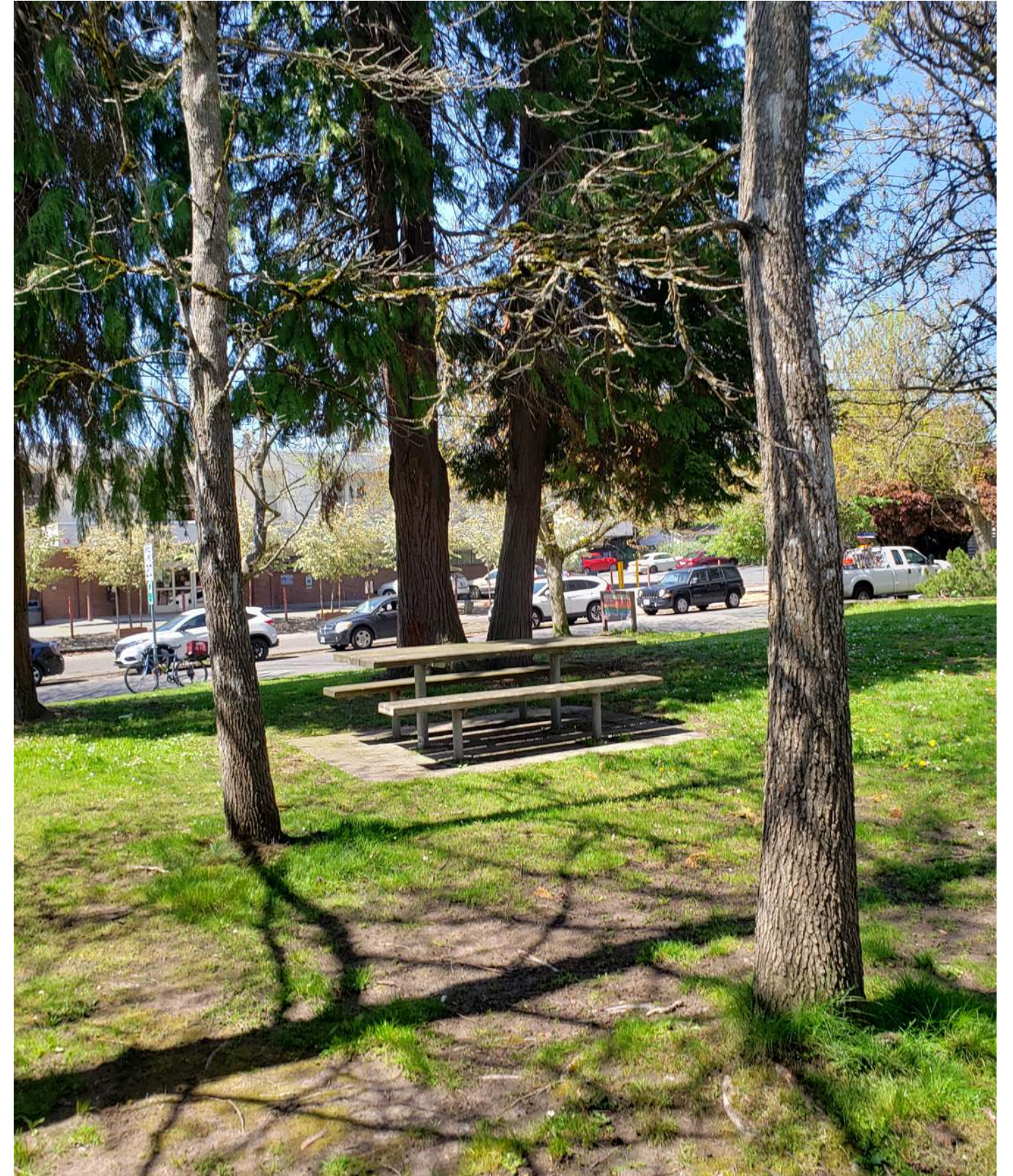
NEXT STEPS

What's next?

Based on this preferred schematic-level design, SPR will begin developing construction documents through Fall of this year.

Check back on the project webpage for updates!

<https://www.seattle.gov/parks/about-us/projects/firehouse-mini-park-play-area-renovation>





Thank you!

For questions in the future, please contact:

Jessica Michalak, SPR Capital Projects Coordinator
Jessica.Michalak@seattle.gov