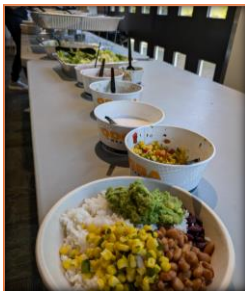


Firehouse Mini Park Play Area Renovation – Engagement 2 2024



An in-person public engagement event was held for Firehouse Mini Park Play Area Renovation at Byrd Barr Place on September 21st, 2024, as part of a second public outreach effort. The event was held from 10am till 1pm and 32 neighbors attended it. The attendees walked through the project introduction boards and were given an opportunity to provide their input on five different play equipment options. Among the five equipment design options, three were firehouse themed and two were nature-inspired theme. Many inputs were collected from the event that day, in addition to which, an online survey was also released a few days later. A total of 85 online responses were gathered from residents in the Seattle area over the course of two weeks that the survey stayed open. Among them, 46 responses are from individuals living in neighboring postal areas to the park. The survey was advertised in multiple languages and flyers were distributed in many neighborhood community hubs, cafes, grocery markets, and restaurants. The following is a report on all the input received so far from the second public engagement process of this project including the in-person meeting and the online survey.



Firehouse Mini Park is a small park that is used mostly by families, kids, caretakers, and students in the Cherry Hill neighborhood as well as social service users from around Seattle. The majority (62%) of survey respondents' kids age falls within 2-12 years of age and 17% of the respondents' kids are under 2 years of age. The majority (77%) of the respondents self-identified to be of Caucasian heritage. Additionally, SPR team is grateful to have received responses from mix-ethnicity residents i.e. residents with African American (9%), Latine (7%), South Asian (4%), Vietnamese (4%), Japanese (4%), Chinese (2%), Samoan (1%), and Native American (1%) heritages. Thank you to all the neighbors who participated in this process!

THE CHOSEN THEME – FIREHOUSE THEME

The current Firehouse theme at the Firehouse Mini Park is a very popular and loved theme. Majority of the neighbors really like the current theme and would like to continue to have the new play equipment built around a Firehouse theme. When asked for input, a total of 91 neighbors chose Firehouse theme while only 26 chose Nature-Inspired theme as the preferred theme.

What Play Equipment Theme would you prefer to have at Firehouse Mini Park?



THE POPULAR DESIGN OPTION

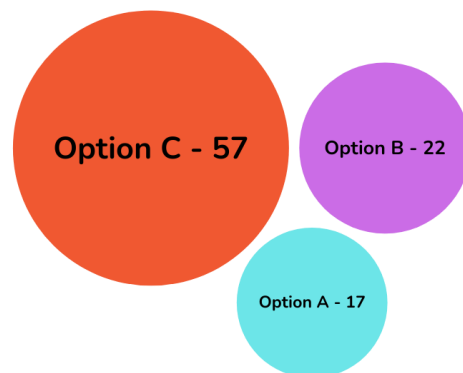
Among the three Firehouse theme options, the most popular vote went for Option C, which includes a fire engine play structure for 2-5 age group, a playhouse, an adaptive swing, a toddler swing, a spring toy similar to the much beloved Clifford (small dog spring toy) that's been in this park for years, **slides**, climbing features, and a pull-up bar.

Several respondents mentioned that they like the variety of options provided in Option C design.

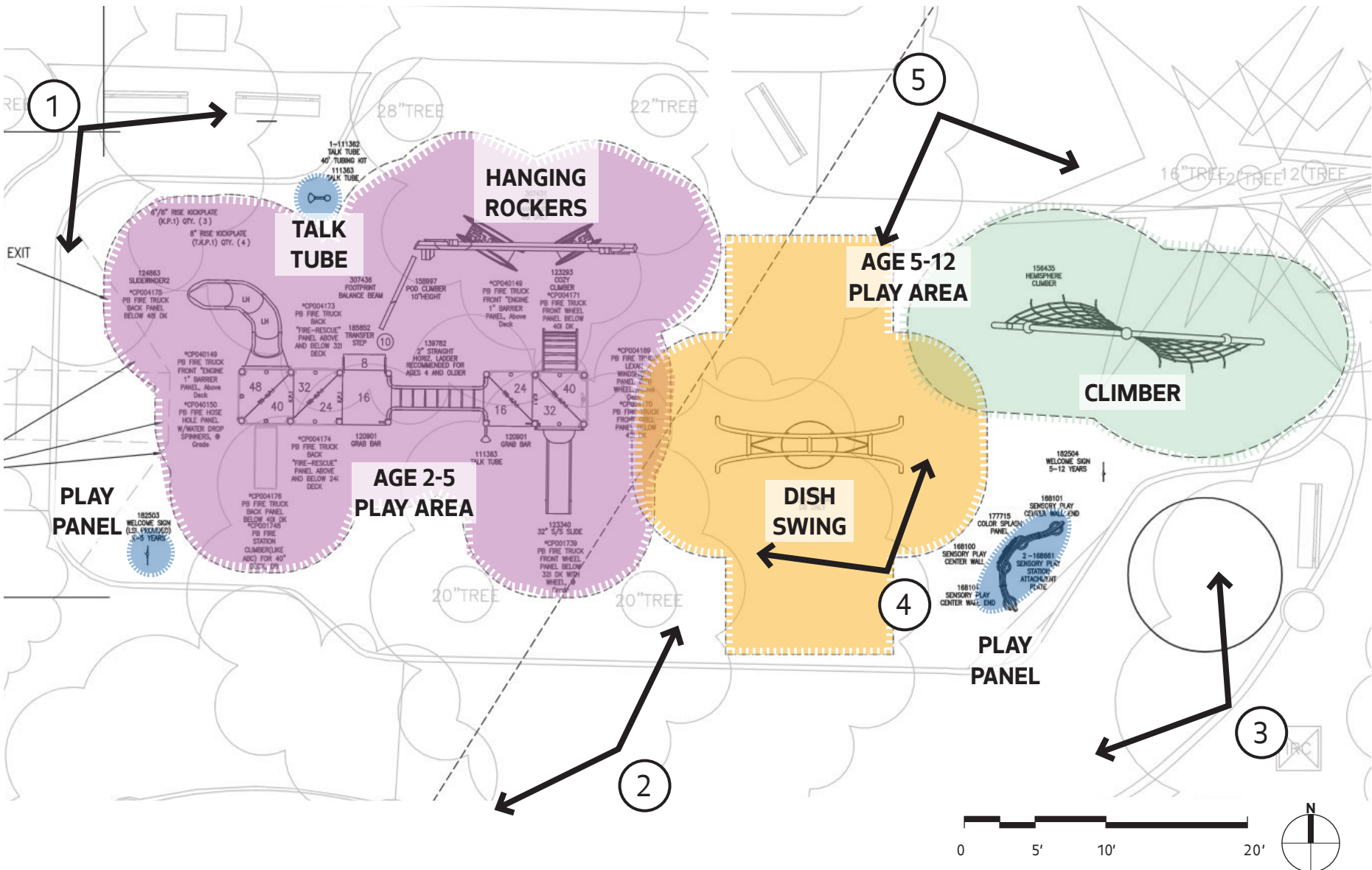
Several of them have urged SPR designers to choose unique play elements like whirl and **spring toy** in this park so that there is increased play variety in the neighborhood. A few respondents

proposed creative use of firehouse theme with **vertical ladder climbing feature** and many proposed **a steering wheel** aspect in a fire engine play structure. Few respondents also appreciated and highlighted the importance of having stroller and wheelchair-friendly pathways in a park like this.

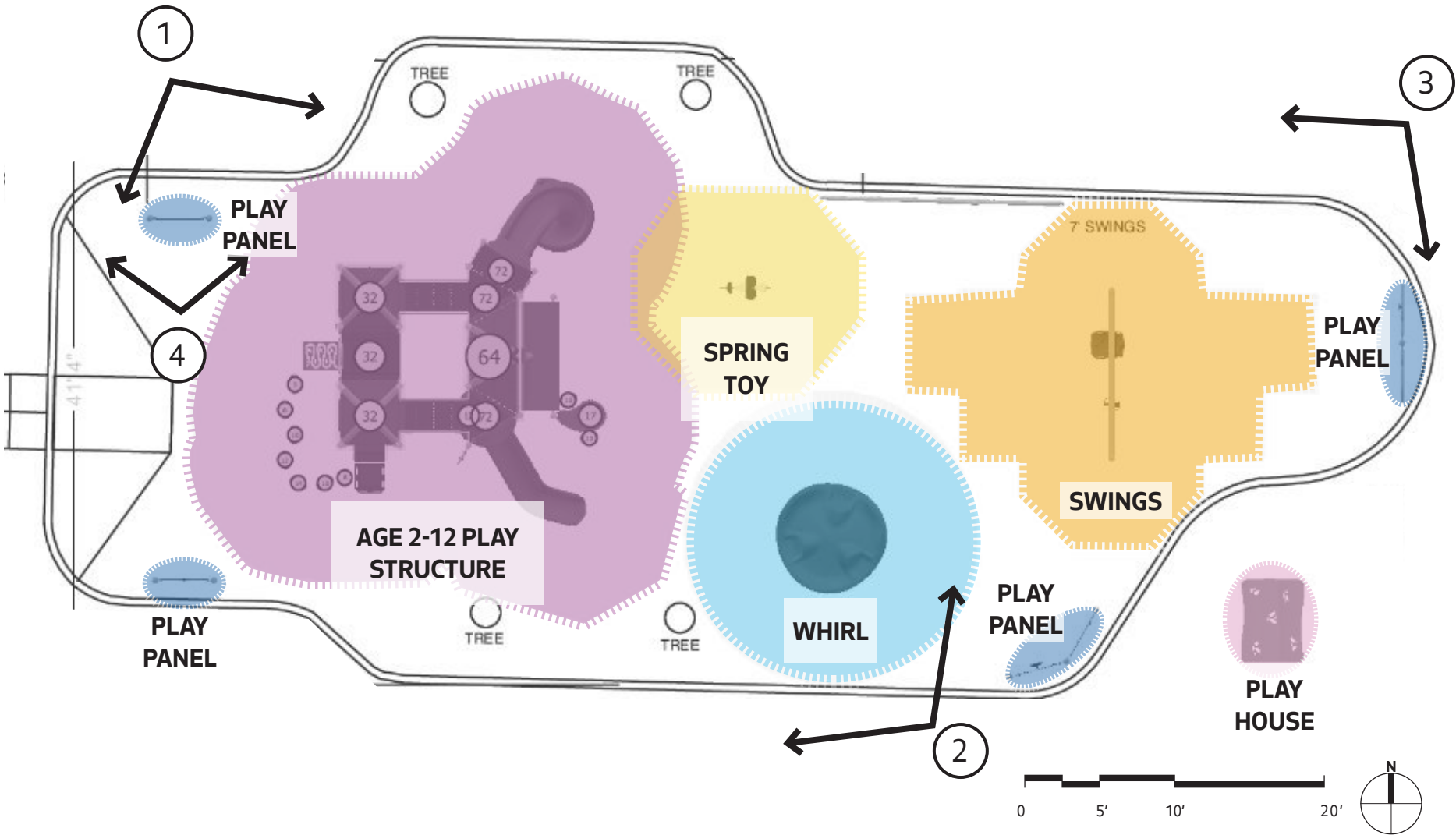
Which Firehouse Theme Concept is your overall favorite?



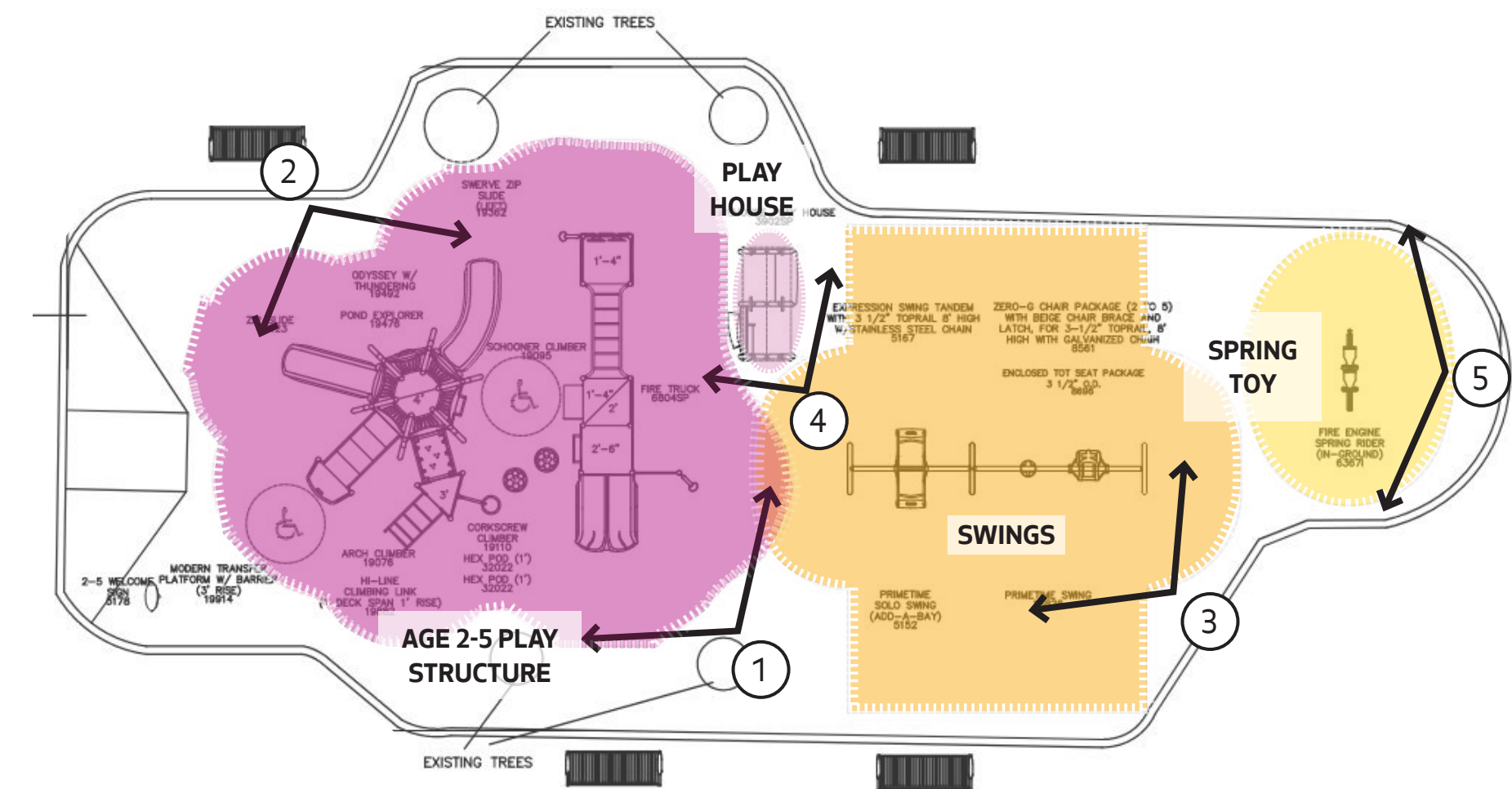
PLAY EQUIPMENT | FIREHOUSE OPTION A



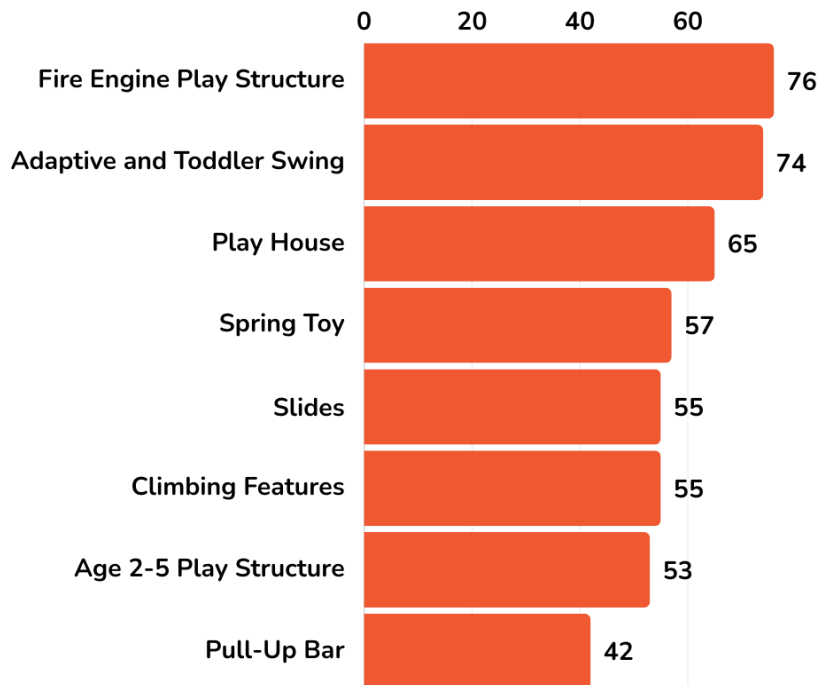
PLAY EQUIPMENT | FIREHOUSE OPTION B



PLAY EQUIPMENT | FIREHOUSE OPTION C

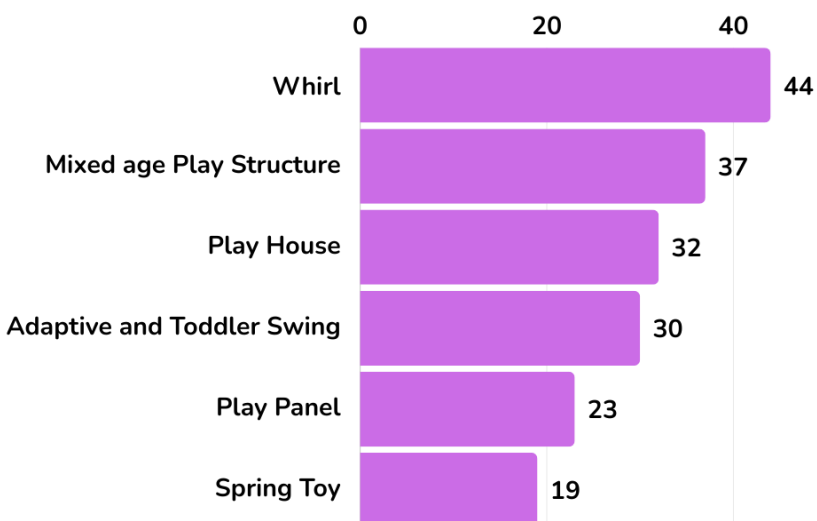


Which play elements do you like in Firehouse Theme Concept C?



Option C is the most liked design option with unique play structures for 2-5 age group. Respondents also really like the **Playhouse** design and **tandem swings** in this option. One respondent has suggested orange and yellow i.e. **fire like color play** on few elements in the play area.

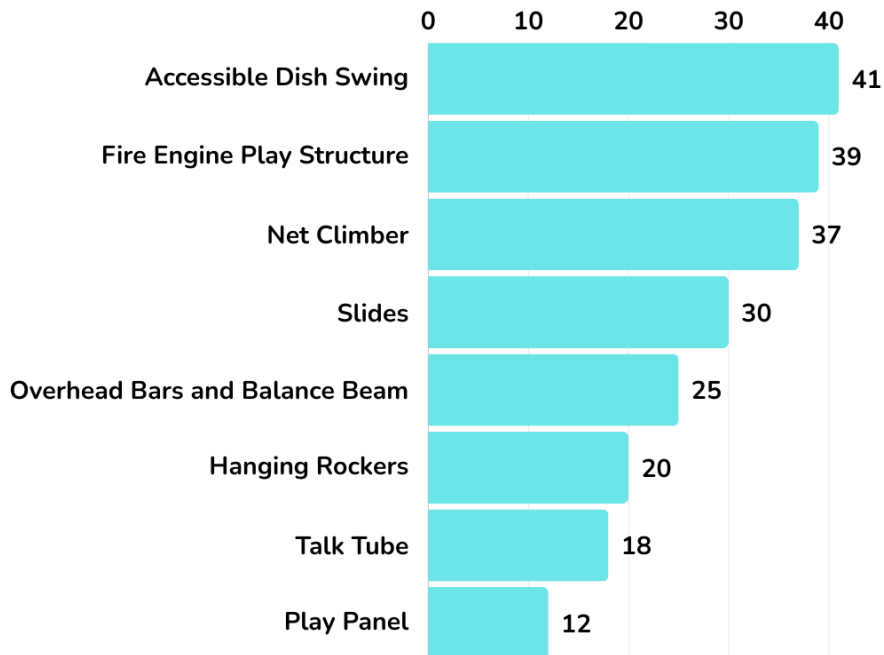
Which play elements do you like in Firehouse Theme Concept B?



In option B design, respondents really like unique **Whirl** play element.

One respondent also suggested that, if **steppers** similar to the one in this design are included in the final design, that they are designed to provide higher play value with a height variation and a wobbling element.

Which play elements do you like in Firehouse Theme Concept A?



Several respondents suggested, if the **monkey bars** in this Option A design are included in the final design, they'd like them to be designed longer so that kids get higher play value with greater work out.

POTENTIAL ITEMS IF BUDGET ALLOWS

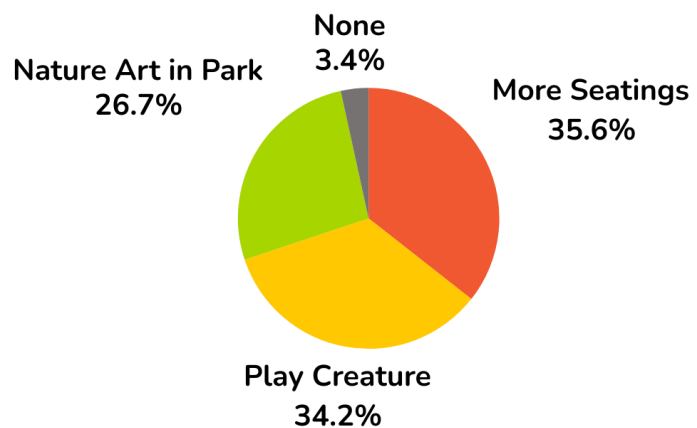


More Seating Locations



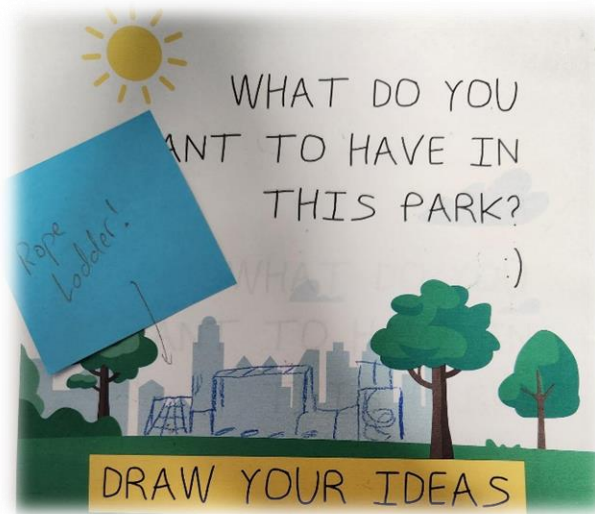
Play Creature Feature

If budget allows, what additional potential items would you like to see in your Firehouse Mini Park?



ADDITIONAL FEEDBACK

Respondents really like the fire engine play element and many of them would like to see option B and C Firehouse theme option designs combined into the final design. **Trees, Playhouse, swings, balance beam, whirl, belt swing, and climbing wall** are the popular play elements that are liked by the respondents. Many of the respondents have requested to include a **steering wheel** as part of the fire engine for fire truck play element if possible. Some of them have requested SPR to take into account the cognitive challenges kids might struggle with or be excited about while using different play equipment. A few respondents suggest having the lawn area be converted to a ball friendly space by creating a low height wall around it if possible so that the kids can play different types of ball games. Several respondents also requested more connection between play features to have wide variety of play motion such as pendular, rotation, and vertical hanging for kids. A request was also received to try and make the **drinking water fountain** in the park be accessible year round. Some of the other items requested by the respondents are native landscaping, covered space, restroom, seesaw, net bridge, and zip line.



Thank you!