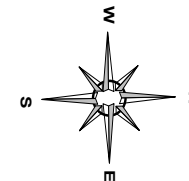


Statewide Parking Lot Services, Inc



Traffic Control Plan

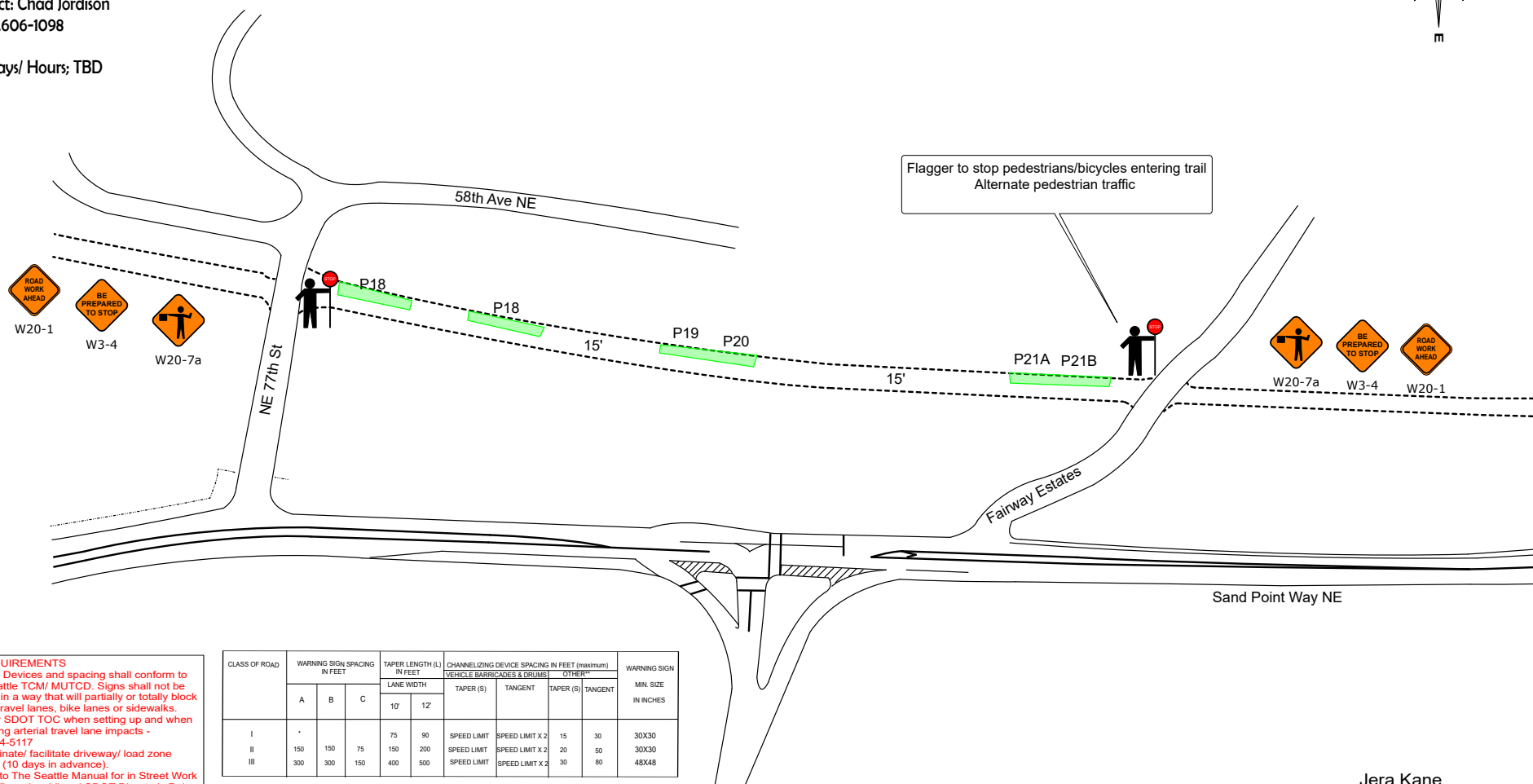


Location: Burke Gilman Trail Fairway Estates

Job Description: Partial Trail Closures

Contact: Chad Jordison
C. 253.606-1098

Site Days/ Hours: TBD



(*)REQUIREMENTS

*Signs, Devices and spacing shall conform to the Seattle TCM/ MUTCD. Signs shall not be placed in a way that will partially or totally block active travel lanes, bike lanes or sidewalks.

* Notify SDOT TOC when setting up and when removing arterial travel lane impacts - 206-684-5117

*Coordinate/ facilitate driveway/ load zone access (10 days in advance).

*Refer to The Seattle Manual for in Street Work page 35 section: VI and SDOT Director's Rule 10-2015 for pedestrian requirements.

*Reserve curb space including paid parking w/ SDOT traffic permits @ (206) 684-5086.

*Notify Metro of bus route/stop impacts (Metro trolley coaches shall not shift more than 8' off center of lines): Trolley 206-477-1150/ Non-trolley 206-477-1140

CLASS OF ROAD	WARNING SIGN SPACING IN FEET			TAPER LENGTH (L) IN FEET		CHANNELIZING DEVICE SPACING IN FEET (maximum)				WARNING SIGN MIN. SIZE IN INCHES
	A	B	C	LANE WIDTH		VEHICLE BARRICADES & DRUMS		OTHER**		
				10'	12'	TAPER (S)	TANGENT	TAPER (S)	TANGENT	
I	*			75	90	SPEED LIMIT	SPEED LIMIT X 2	15	30	30X30
II	150	150	75	150	200	SPEED LIMIT	SPEED LIMIT X 2	20	50	30X30
III	300	300	150	400	500	SPEED LIMIT	SPEED LIMIT X 2	30	80	48X48

ROAD CLASS DEFINITIONS

CLASS I - CENTRAL BUSINESS DISTRICT, UNIVERSITY DISTRICT

CLASS II - ARTERIAL STREETS

CLASS III - ALL PARTIALLY OR FULL CONTROLLED ACCESS ARTERIAL STREETS

* ADVANCED WARNING SIGNS IF FEASIBLE

** VERTICAL BARRICADES, CONES, TUBULAR GUIDEPOSTS

Jera Kane
ID: J333B
TCS # ES2 000709
Phone: 206-573-2962
Trafficplandesigns@gmail.com
Ex Date: 12/31/2028

Statewide Parking Lot Services, Inc

Location: Burke Gilman Trail Fairway Estates

Job Description: Partial Trail Closures

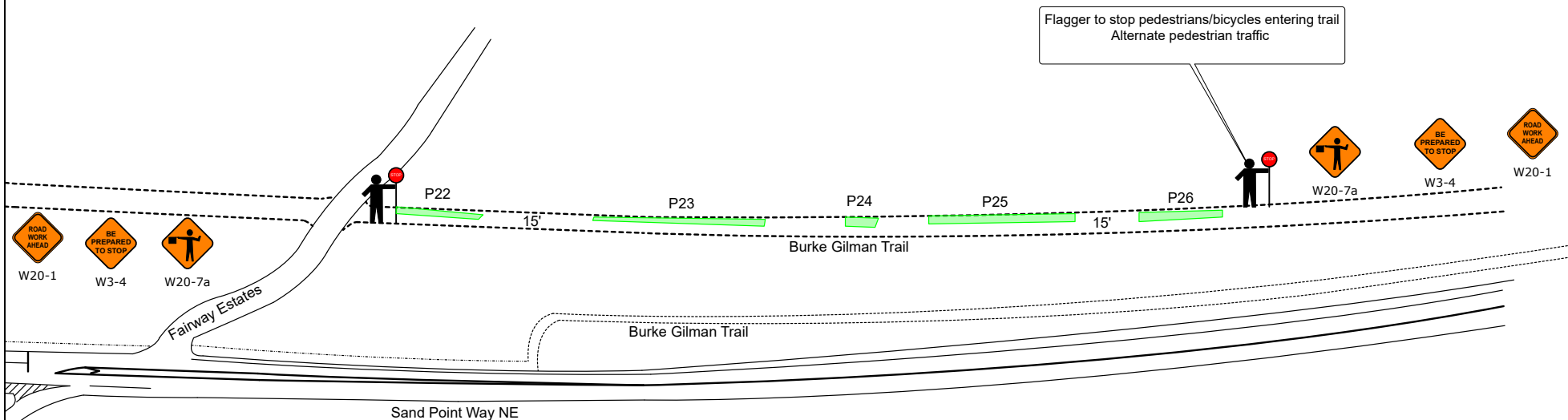
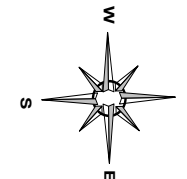
Contact: Chad Jordison

C. 253.606-1098

Site Days/ Hours; TBD



Traffic Control Plan



(*)REQUIREMENTS

*Signs, Devices and spacing shall conform to the Seattle TCM/ MUTCD. Signs shall not be placed in a way that will partially or totally block active travel lanes, bike lanes or sidewalks.

* Notify SDOT TOC when setting up and when removing arterial travel lane impacts - 206-684-5117

*Coordinate/ facilitate driveway/ load zone access (10 days in advance).

*Refer to The Seattle Manual for in Street Work page 35 section: VI and SDOT Director's Rule 10-2015 for pedestrian requirements.

*Reserve curb space including paid parking w/ SDOT traffic permits @ (206) 684-5086.

*Notify Metro of bus route/stop impacts (Metro trolley coaches shall not shift more than 8' off center of lines): Trolley 206-477-1150/ Non-trolley 206-477-1140

CLASS OF ROAD	WARNING SIGN SPACING IN FEET			TAPER LENGTH (L) IN FEET		CHANNELIZING DEVICE SPACING IN FEET (maximum)				WARNING SIGN MIN. SIZE IN INCHES
				LANE WIDTH		VEHICLE BARRICADES & DRUMS		OTHER**		
	A	B	C			TAPER (S)	TANGENT	TAPER (S)	TANGENT	
				10'	12'					
I	*			75	90	SPEED LIMIT	SPEED LIMIT X 2	15	30	30X30
II	150	150	75	150	200	SPEED LIMIT	SPEED LIMIT X 2	20	50	30X30
	300	300	150	400	500	SPEED LIMIT	SPEED LIMIT X 2	30	80	48X48

ROAD CLASS DEFINITIONS

CLASS I - CENTRAL BUSINESS DISTRICT, UNIVERSITY DISTRICT

CLASS II - ARTERIAL STREETS

CLASS III - ALL PARTIALLY OR FULL CONTROLLED ACCESS ARTERIAL STREETS

* ADVANCED WARNING SIGNS IF FEASIBLE

** VERTICAL BARRICADES, CONES, TUBULAR GUIDEPOSTS

Legend

- Traffic Controller Stop
- W3-4 be prepared to stop
- W20-1 Road Work Ahead
- W20-7a flagger
- Work Area

Jera Kane
ID: J333B
TCS # ES2 000709
Phone: 206-573-2962
Trafficplandesigns@gmail.com
Ex Date: 12/31/2028

Statewide Parking Lot Services, Inc

Location: Burke Gilman Trail Fairway Estates

Job Description: Partial Trail Closures

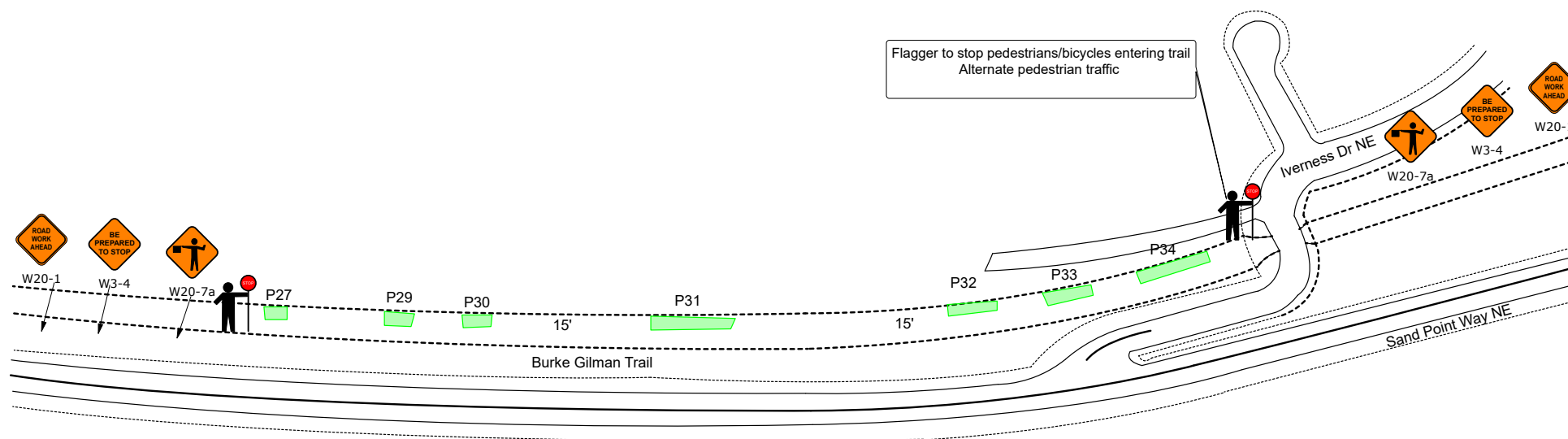
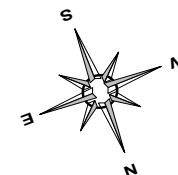
Contact: Chad Jordison

C. 253.606-1098

Site Days/ Hours; TBD



Traffic Control Plan



(*)REQUIREMENTS

*Signs, Devices and spacing shall conform to the Seattle TCM/ MUTCD. Signs shall not be placed in a way that will partially or totally block active travel lanes, bike lanes or sidewalks.

* Notify SDOT TOC when setting up and when removing arterial travel lane impacts - 206-684-5117

*Coordinate/ facilitate driveway/ load zone access (10 days in advance).

*Refer to The Seattle Manual for in Street Work page 35 section: VI and SDOT Director's Rule 10-2015 for pedestrian requirements.

*Reserve curb space including paid parking w/ SDOT traffic permits @ (206) 684-5086.

*Notify Metro of bus route/stop impacts (Metro trolley coaches shall not shift more than 8' off center of lines): Trolley 206-477-1150/ Non-trolley 206-477-1140

CLASS OF ROAD	WARNING SIGN SPACING IN FEET			TAPER LENGTH (L) IN FEET		CHANNELIZING DEVICE SPACING IN FEET (maximum)				WARNING SIGN MIN. SIZE IN INCHES
						VEHICLE BARRICADES & DRUMS		OTHER**		
	A	B	C	LANE WIDTH		TAPER (S)	TANGENT	TAPER (S)	TANGENT	
				10'	12'					
I	*			75	90	SPEED LIMIT	SPEED LIMIT X 2	15	30	30X30
II	150	150	75	150	200	SPEED LIMIT	SPEED LIMIT X 2	20	50	30X30
	300	300	150	400	500	SPEED LIMIT	SPEED LIMIT X 2	30	80	48X48

ROAD CLASS DEFINITIONS

CLASS I - CENTRAL BUSINESS DISTRICT, UNIVERSITY DISTRICT

CLASS II - ARTERIAL STREETS

CLASS III - ALL PARTIALLY OR FULL CONTROLLED ACCESS ARTERIAL STREETS

* ADVANCED WARNING SIGNS IF FEASIBLE

** VERTICAL BARRICADES, CONES, TUBULAR GUIDEPOSTS

Legend

- Traffic Controller Stop
- W3-4 be prepared to stop
- W20-1 Road Work Ahead
- W20-7a flagger
- Work Area

Jera Kane
ID: J333B

TCS # ES2 000709

Phone: 206-573-2962

Trafficplandesigns@gmail.com

Ex Date: 12/31/2028