

Board of Parks & Recreation Commissioners Superintendent's Report

Christopher Williams, SPR Deputy Superintendent/Chief of Staff

March 27, 2025



Seattle
Parks & Recreation

Healthy People, Thriving Environment, Vibrant Community



#SeattleShines



Department Updates



Park Project Updates/Completions

Recent Pier 62 Repair



Genesee Playfield #2



Mickey Merriam PF #8

Park Project Updates/Completions




Be'er Sheva Park



5

#SeattleShines

Parks and Recreational Services: Recreation



SEATTLE CITYWIDE RECREATION PROGRAMS

2025 SUMMER CAMP


COMMUNITY CENTERS:

ZONE ONE
DELDRIDGE
HIGH POINT
JEFFERSON
RAINIER BEACH

ZONE TWO
GARFIELD
MILLER
NORTHGATE
QUEEN ANNE
YESLER

ZONE THREE
BALLARD
BITTER LAKE
GREEN LAKE
LAKE CITY
LAURELHURST
LOYAL HEIGHTS
MAGNUSON
MEADOWBROOK
RAVENNA-ECKSTEIN

ENVIRONMENTAL LEARNING



Free Egg Hunts!





Seattle Parks & Recreation



FAMILY FUN ACTIVITIES

Spring 2025

Free or low-cost activities for the whole family!



Seattle Parks & Recreation



SEATTLE CITYWIDE RECREATION PROGRAMS

SPRING 2025 PROGRAMS

COMMUNITY CENTERS:

ZONE ONE
DELDRIDGE
HIAWATHA
HIGH POINT
JEFFERSON
RAINIER
RAINIER BEACH
VAN ASSELT

ZONE TWO
GARFIELD
INT'L DISTRICT/CHINATOWN
MILLER
MONTLAKE
NORTHGATE
QUEEN ANNE
YESLER

ZONE THREE
BALLARD
BITTER LAKE
GREEN LAKE
LAKE CITY
LAURELHURST
LOYAL HEIGHTS
MAGNUSON
MEADOWBROOK
RAVENNA-ECKSTEIN

VIRTUAL PROGRAMS
ENVIRONMENTAL LEARNING



Thank you!



Seattle
Parks & Recreation

Healthy People, Thriving Environment, Vibrant Community



2025 Proposed Park Hours Changes

Daisy Catague, Deputy Superintendent of Park and Recreation Services
March 27, 2025



Seattle
Parks & Recreation

Healthy People, Thriving Environment, Vibrant Community

#SeattleShines



Briefing Objective

1

Review
Superintendent
authority to modify
park hours

2

Present slate of
proposed changes

3

Q&A Session
with BPRC

Action Requested:

The Superintendent seeks a BPRC recommendation on this proposal.

#SeattleShines

The logo for Seattle Shines, featuring a stylized rainbow with horizontal bars in yellow, orange, red, green, and blue.



Superintendent Rulemaking Procedures

Title	Details	Guiding Code
Administrative Code	Establishes rule-making procedures for City agencies.	Seattle Municipal Code (SMC) § 3.02
Notice and Hearing on Adoption of Rules	Outlines requirements for formal notice and public hearing related to establishing a rule.	SMC § 3.02.030
Emergency Action	Superintendent may take emergency action for up to 60 days with City Clerk filing. Public hearing not required.	SMC § 3.02.050

Park Hours: SMC and Policy Overview

Park Hours	Details	Guiding Code or Policy
4 a.m. – 11:30 p.m.	<p>All Parks – Unless Otherwise Posted.</p> <p>Superintendent has authority to set specific hours for select parks and facilities, including 24 hours a day.</p> <p>Public hearing required for changes except for Emergency Action. City Clerk filing required for all changes.</p>	SMC § 18.12.245: General Park Hours
Open 24 hours	Select parks and boat ramps.	SPR Policy: Park Operating Hours Exception. Section 4.2.
6 a.m. – 10 p.m.	Primary exception option from the two above. Other exceptions allowed to address emerging needs.	SPR Policy: Park Operating Hours Exception. Section 4.7.
Pilot Hours	Superintendent may establish a pilot for up to 270-days to address public safety.	SPR Policy: Park Operating Hours Exception. Section 7.2.3.
Public Signage	Once operating hours approved by Superintendent, SPR must post signs and update relevant web sites.	SPR Policy: Park Operating Hours Exception. Section 6.1

Why Modify Park Hours?



SUPPORT AND MANAGE SUMMER
BEACH FIRES PROGRAM



RESPOND TO COMMUNITY
HEALTH AND SAFETY CONCERNS



ALIGN WITH SPD, SECURITY
CONTRACTORS, AND PARK
RANGERS



Proposal: Park Hours

Park	Current Hours	2025 Proposal	Recommended Timeframe
Alki Beach	4 a.m. – 11:30 p.m.	4 a.m. – 10:30 p.m.	Permanent Seasonal
Golden Gardens	4 a.m. – 11:30 p.m.	4 a.m. – 10:30 p.m.	Permanent Seasonal
Hoa Mai	4 a.m. – 11:30 p.m.	7 a.m. – 7:30 p.m.	270-day pilot (Extended Emergency)

- **Permanent Seasonal Hours:**
 - An ongoing adjustment to park operating hours from Memorial Day to Labor Day each calendar year; reducing public access by only one hour.
 - Finalizes hours from 270-day pilots conducted in recent years.
- Hoa Mai proposal intended to address immediate needs.

Proposal: Boat Ramp Hours

Boat Ramp	Current Hours	2025 Proposal	Recommended Timeframe
Atlantic City	24 hours	4 a.m. – 10:30 p.m.	270-day pilot
Don Armeni	24 hours	4 a.m. – 10:30 p.m.	Permanent Seasonal
Eddie Vine	24 hours	4 a.m. – 10:30 p.m.	Permanent Seasonal
Fourteenth Avenue	4 a.m. – 11:30 p.m.	4 a.m. – 10:30 p.m.	270-day pilot
Stanley Sayres	24 hours	4 a.m. – 10:30 p.m.	270-day pilot
Sunnyside	24 hours	4 a.m. – 10:30 p.m.	270-day pilot

- **Permanent Seasonal Change**
 - Alignment between Alki Beach, Don Armeni, Golden Gardens, and Eddie Vine operating hours.
- Remaining 270-day pilots align closing hours for all vehicular boat launches; reducing public access by only one hour.

Proposal: Technical Changes

Boat Ramp	Current Hours	2025 Proposal (aligns with current signage)	Recommended Timeframe
Hamilton Viewpoint	4 a.m. - 11:30 p.m.	6 a.m. - 10 p.m.	Permanent Change
Mag Park Boat Ramp	24 hours	6 a.m. - 10 p.m.	Permanent Change

- Proposed permanent change since these hours were previously piloted at Hamilton and align with what is currently advertised on-site and on the SPR web.

Operations Alignment



Seattle
Police
Department

Security
Contractors

Park
Rangers

Next Steps



April 10th Public Hearing



April 24th BPRC Recommendation Vote



May: Superintendent Issues Final Decision



Submit City Clerk Filings



Update Web Sites. Post Public Signage.



Q&A Session



Seattle
Parks & Recreation

Healthy People, Thriving Environment, Vibrant Community

Presentation to Board of Park and Recreation Commissioners

Planning & Capital Development Branch | March 27, 2025



Seattle
Parks & Recreation

Healthy People, Thriving Environment, Vibrant Community



#SeattleShines



TODAY'S AGENDA

Asset Management Planning Process

Completed 2024 Project Highlights

Projects in Construction Highlights

Park CommUNITY Fund Highlights

Freeway Park Update

Park District Cycle 2 Commitments & Updates

Grants

Groundbreaking and Openings

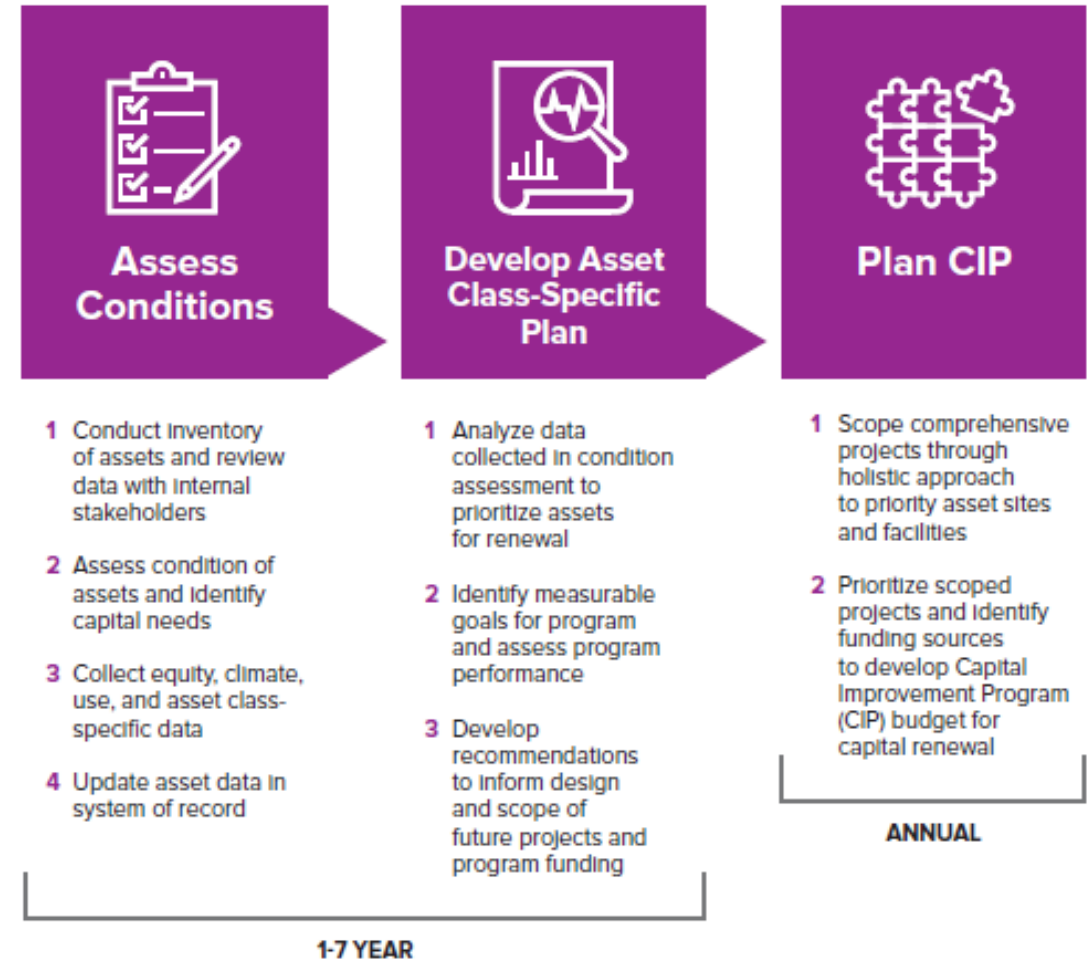
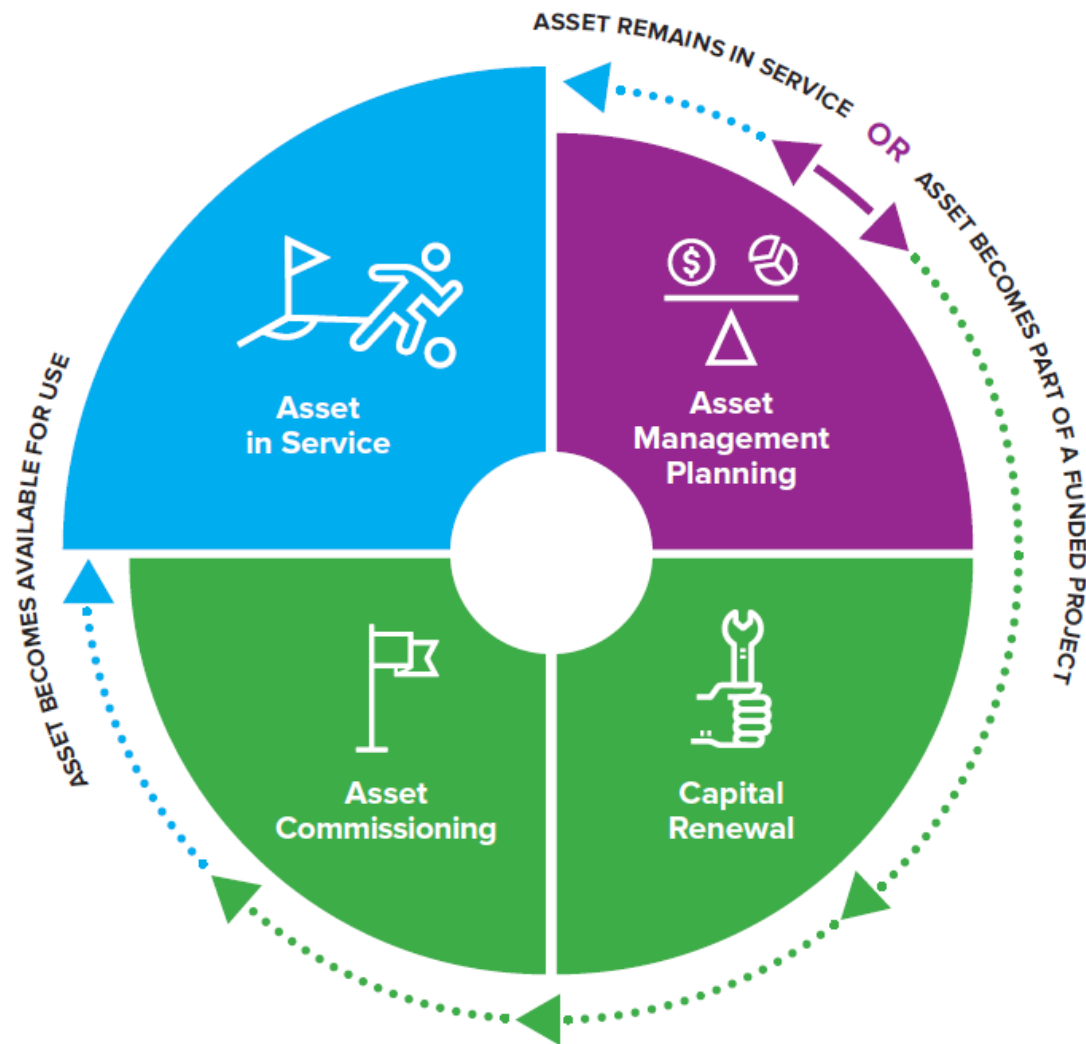


Seattle
Parks & Recreation

Healthy People, Thriving Environment, Vibrant Community

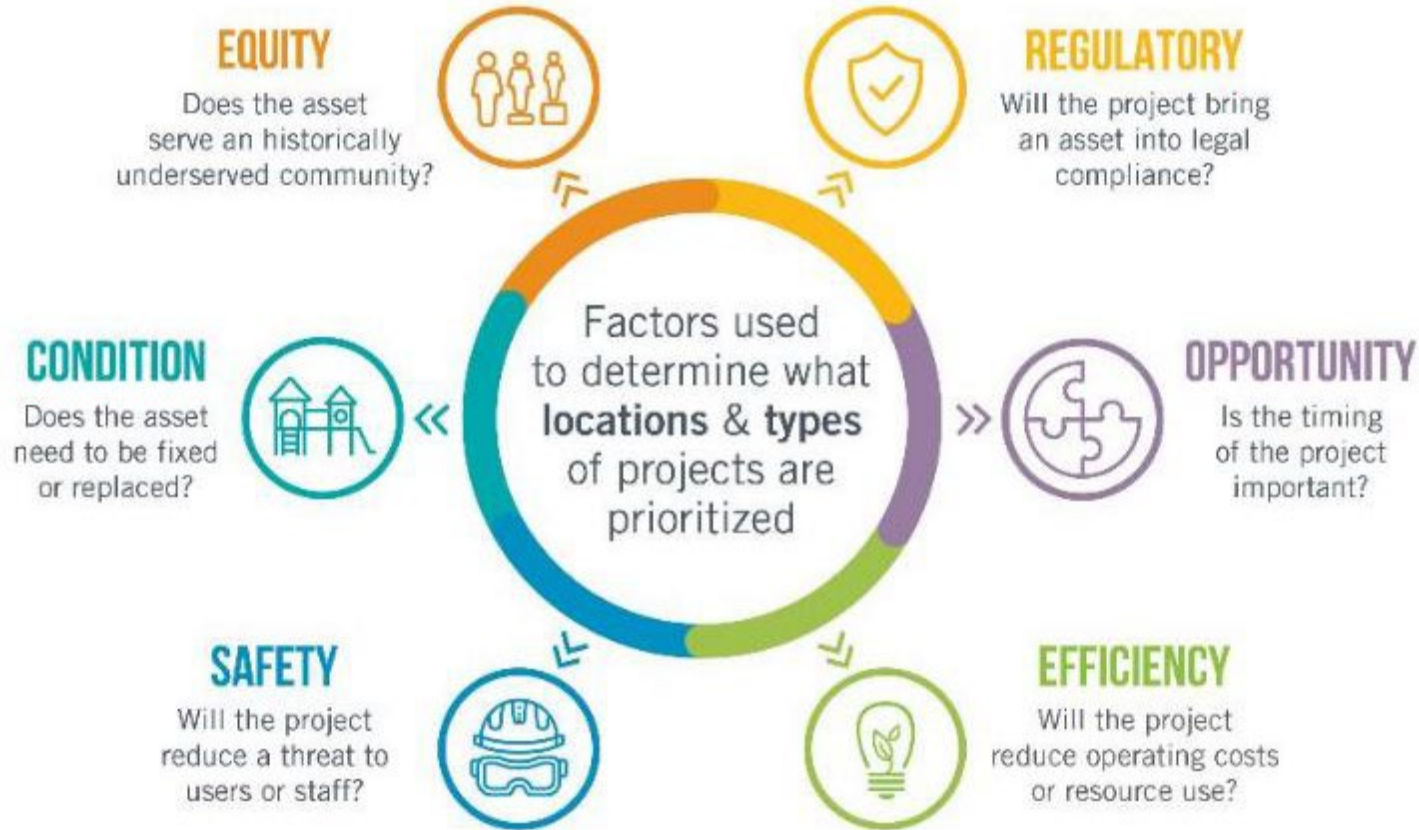


Asset Management Planning Process



#SeattleShines

Asset Management Planning Process: Project Prioritization



Seattle
Parks & Recreation

Healthy People, Thriving Environment, Vibrant Community

2024 Project Highlight:

Hoa Mai Park

- **New Neighborhood Park**
- OAC artwork featuring local artist Kalina Chung
- Accessible path with over 20' elevation difference connecting Jackson Street and King Street
- 7 new trees, new play area, amphitheater, community gathering space
- ~\$4.114M Total Project Budget: \$3.35M Park District Funding, \$700K REET, \$62K KC Levy



5

#SeattleShines



2024 Project Highlight:

Cheryl Chow Park

(North Rainier Land-banked Site)

- **New Urban Village Park Opening Event on Saturday, April 5**
- Five parcels acquired (1.2 acres total)
- SDOT collaboration on funding traffic calming, sidewalks and curb ramps
- 53 new trees, new play area, adult exercise equipment, basketball court, drinking fountain, picnic and bbq space
- ~\$4.75M Total Project Budget: \$2.9M in Park District Funding, \$1.5M in grant funding and \$350K in SDOT funding

PCD lunch and learn at North Rainier Landbanked Site Nov 2024



6

#SeattleShines

2024 Project Highlight: **TT Minor Play Area**



- **Greater & Greener Conference Community Build**
- Partial equipment donation by play area manufacturer
- Renovation provides a new play area, as well as new pathway paving to ensure an accessible route to and throughout the space



7

#SeattleShines

2024 Project Highlight:

Green Lake Small Craft Center

- New 10,800 SF boathouse with restrooms, locker facilities and areas for off-water instruction
- Fully accessible, allowing launch of Seattle's first public adaptive rowing program and expansion of a paracanoeing program.
- ~\$12.75M Total Project Budget: \$2.3M from Friends of GLSCC, \$1.1M min grants, \$5.7M Park District, \$3.65M REET



2024 Project Highlight: Pathways Park

- **Universally Inclusive Play** built through strong community partnership
- Two bio retention cells installed managing 376,218 gal of stormwater
- 56 new trees, accessible picnic area, 100% of park features have an accessible route, drinking fountain, bike parking and fix it station, multiple play pockets with equipment, mini pump track, all gender restrooms
- **First adult changing table**
- ~\$6.6M Total Project Budget: \$800K KC Parks Levy, \$200K REET, \$858K General Bond; Grant funding \$2.4M; SPF and private donors raised \$2.3M.



2024 Project Highlight:

Victor Steinbrueck Park

- **Replaced failed waterproofing membrane** on the westerly portion of the park above privately-owned parking garage
- **Now open to the public**
- Provides public safety improvements including better sight lines, seating area renovation, informal play space renovation, improved and expanded lighting, and landscape upgrades.
- ~\$12.3M Total Project Budget: \$3M Parks & Green Spaces funding, \$5M REET II funding, \$4.3M Seattle Parks District funding

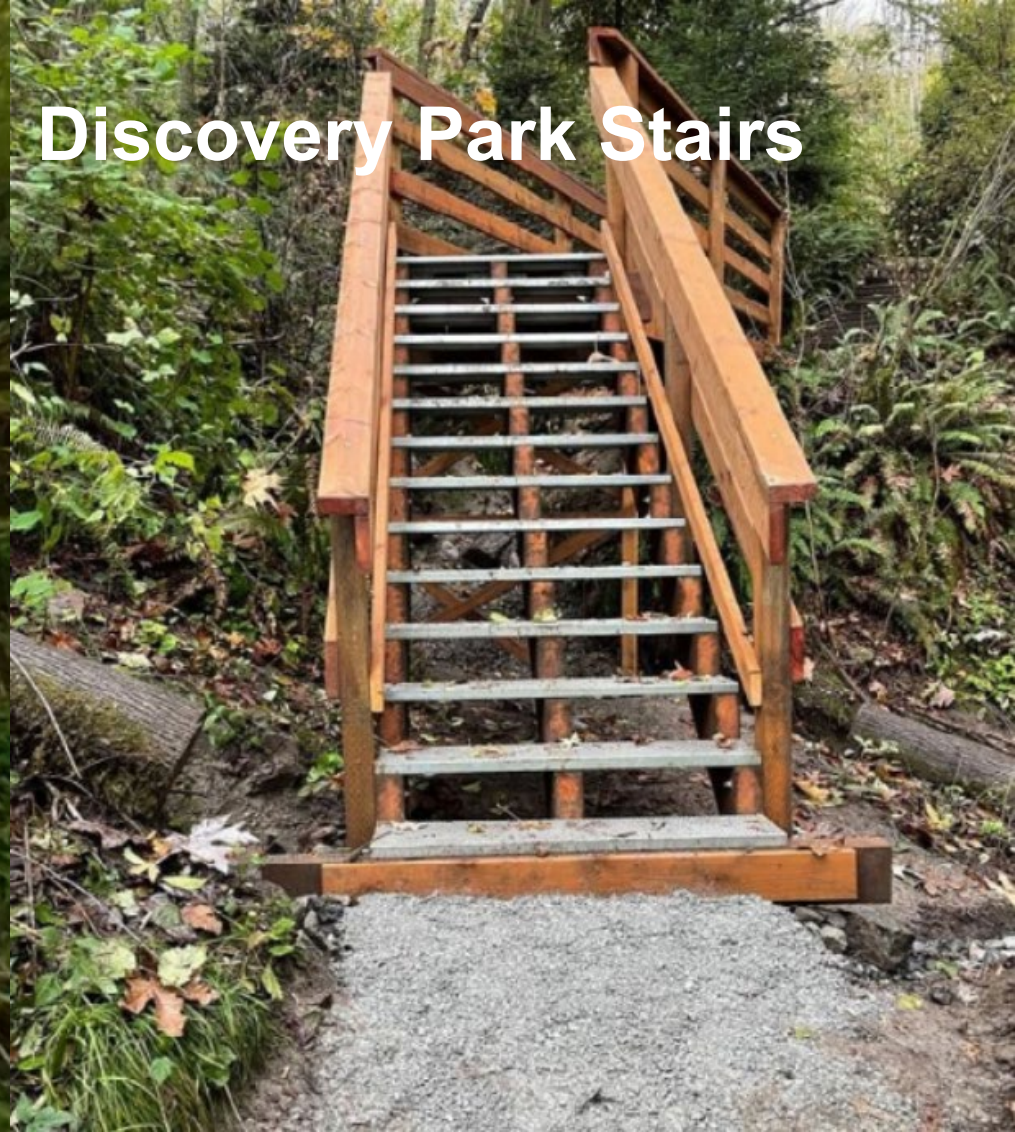


10

#SeattleShines



2024 Project Highlight: Discovery Park Stairs



- Before and After photos
- In-house Design & Construction Project



11

#SeattleShines



Projects Under Construction

- South Park Community Center & Playfield
- South Park Plaza Land-banked Site
- Hiawatha Community Center Stabilization
- Magnolia Community Center Stabilization
- Cheasty Bicycle and Pedestrian Trail North Loop
- Lower Woodland Restroom & Office Fire Repair
- Cayton Corner Park Land-banked Site
- Hubbard Homestead Play Area
- Magnuson Building 12 Stabilization
- Ballard PG Athletic Field Renovation
- Genesee PF #1 Synthetic Turf Replacement
(Field 2 is complete.)
- Salmon Bay Park Play Area
- Maple Wood Playfield and Restroom Renovation
- Madrona Play Area Renovation



Salmon Bay Play Area



Projects in Construction Highlight:

- **April 26 Opening Event**
- New .85 acre, urban park at the gateway of the South Park community
- Cultural elements w/ emphasis on indigenous values through interpretive art
- Community gathering plaza with lighting, lawn areas, play area, tiled seat walls with lights, irrigated plantings, picnic tables and benches, drinking fountain, interpretive panels, and stormwater treatment swales.
- ~\$3.85M Total Project Budget: \$3.67M Seattle Park District funding, \$185K KC Healthy Communities Grant

South Park Plaza



Projects in Construction Highlight:

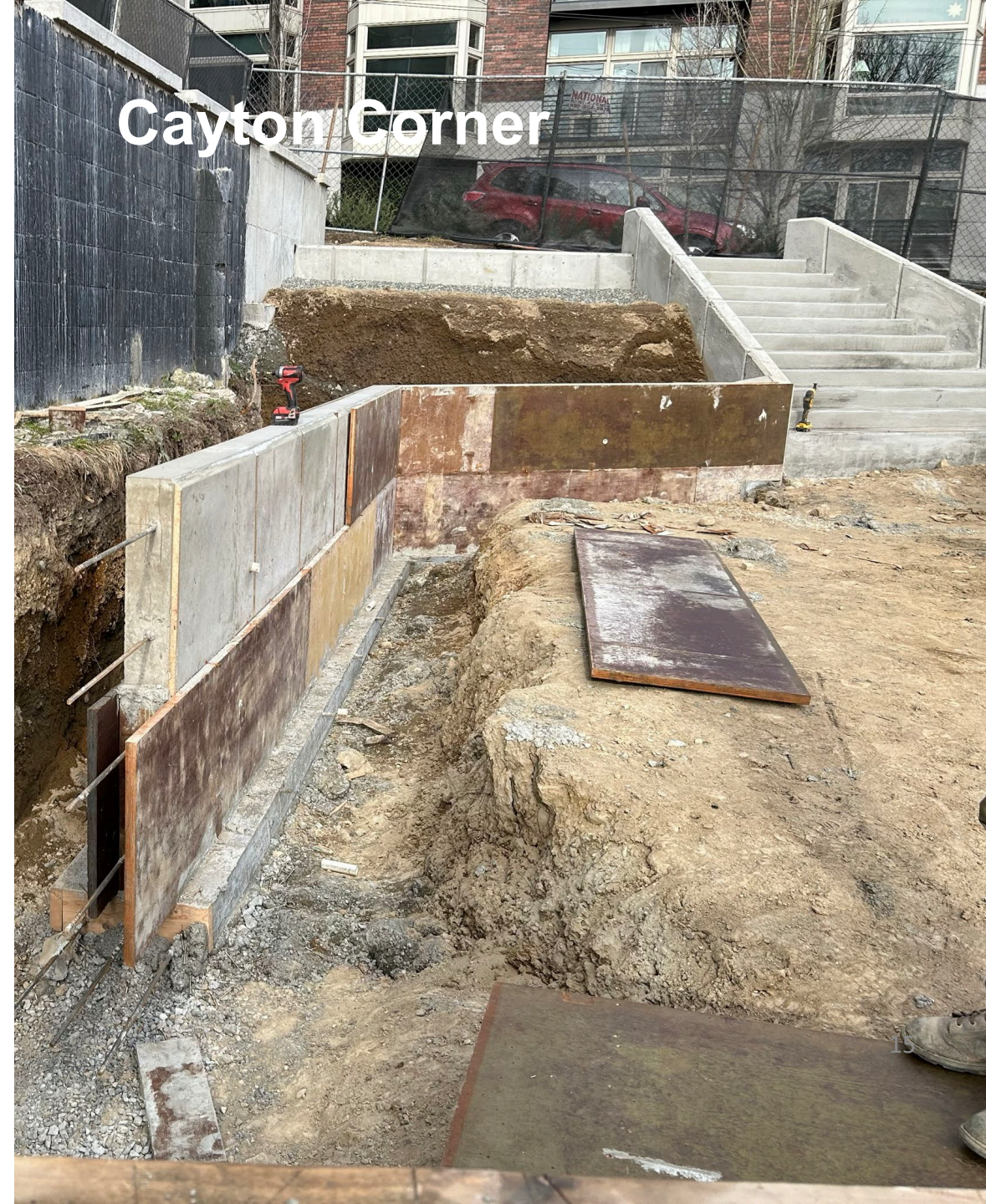
- **In Construction through early 2026**
- **Community Center Stabilization** Project to address maintenance, accessibility, and decarbonization.
- **Site Development** includes spray park, play area, gathering, extended parking, dog off-leash area, a full-size multi-sport court, and an all-season synthetic lit turf field with a circular walking trail.
- ~\$17M Total Project Budget: \$5.6M Seattle Park District funding, \$700,000 King County Grant, \$5.5M in REET, \$1M RCO, \$338K Seattle Preschool Levy, \$4M donation from SAAS

South Park Community Center



Projects in Construction Highlight:

- Urban infill project on 4,500 SF lot acquired in 2011.
- Currently in construction – estimated completion in June 2025.
- Project includes small lawn area, porous paving gathering area with picnic table and benches, accessible pathways from 19th, and vegetation.
- ~\$1M Total Project Budget: \$40K Community & SPF Funding, \$115K DON Neighborhood Matching Fund, \$850K Seattle Park District funding



Park CommUNITY Fund Update

The Park CommUNITY Fund advances park equity in Seattle through a community-led funding process. The fund invests in large and small capital projects using participatory budgeting and equitable grant-making practices.

- Currently moving forward with project planning!
(Announced (15) Projects to community Dec., 2024)
- Here are some statistics:
 - Over 2,900 people participated in our Project Selection Process.
 - 71% of the 200+ ideas collected in the first phase were located in the two highest equity priority areas.
 - 84% of 28 projects that advanced to community selection were in located in the two highest equity priority areas.



Freeway Park Improvement Project Update

- Presenting 90% plans to Landmarks, Design Commission and WSDOT
- Coordination with Freeway Park Association Board and Advisory Group to for Phase 1 Priority items
 - Renovate Upper Lawn Restroom
 - Lighting and Lighting infrastructure
 - Landscape Improvements
 - Furnishings Restoration
 - Drainage improvements
- Future phases
 - Seneca Plaza Concierge, Restroom and Storage Buildings
 - Circulation and Pavement Improvements
 - Landscape Renovation
 - WSDOT loading reduction (lightweight fill, pavement, tree removal, landscape restoration)
- WSDOT Coordination Ongoing
- Intent to Start Construction in late 2025, and complete in late 2026



High Profile Project Updates

Queen Anne Community Center (CC) –Community meeting April to share Schematic Design. Construction start in early 2027.

Smith Cove – Bid in Q2 for summer 2025 construction start.

Loyal Heights CC – Soliciting for Design and Project Management Consultants, Q3 Present to IRC for GC/CM approval, Design 2025-26, Construction 2027-28

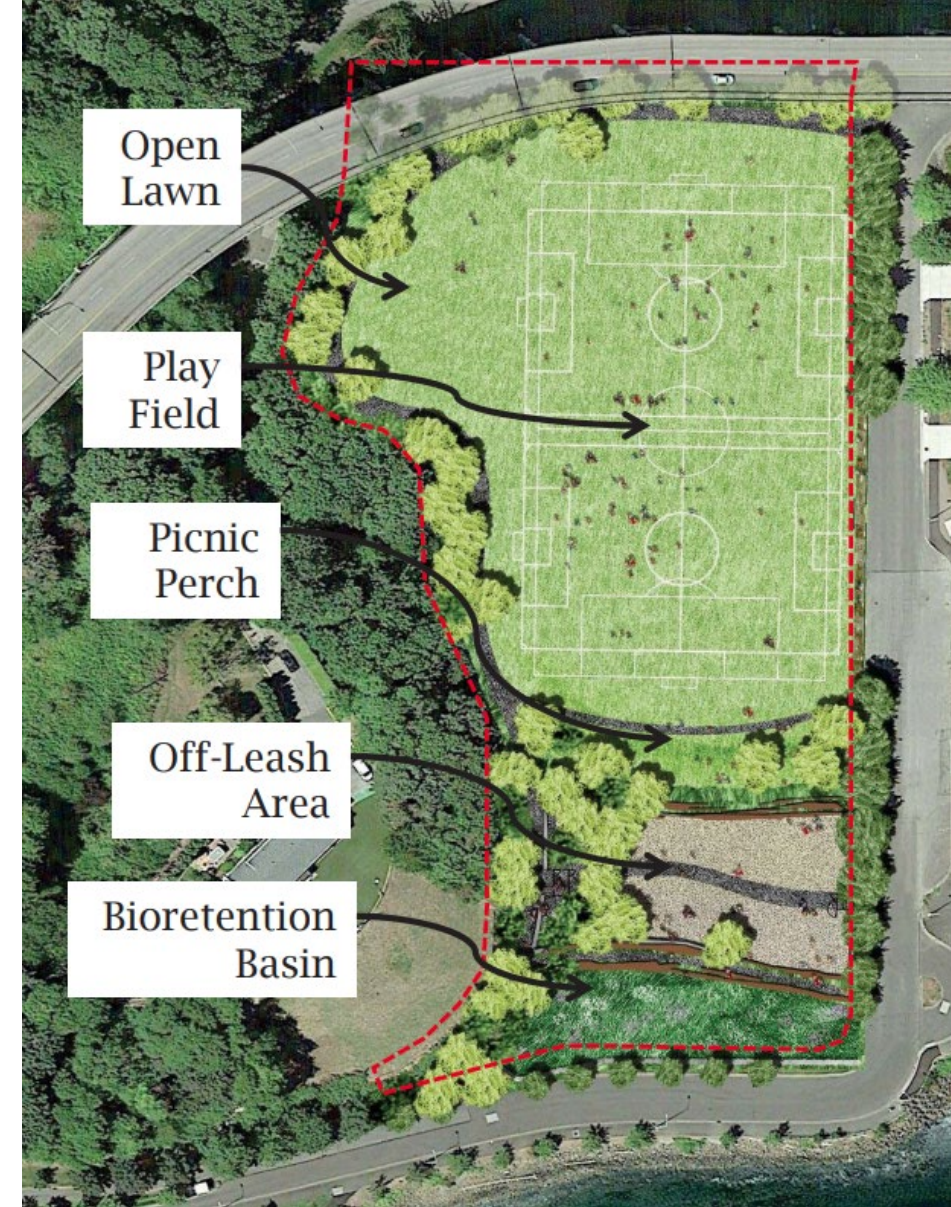
Green Lake CC –Reviewing design options and Landmarks review. Q2 present to IRC for GC/CM approval, public meeting spring, 60% by end of 2025.
Construction 2027-28

Lake City CC – Office of Housing reviewed 3 Developer proposals, 1 is being proposed. Developer selection Q1-Q2, first public meeting late Q2 2025, Design 2025-26, Construction start in 2027.

South Lake Union CC – On hold per current status with developer.

Hiawatha CC – Is in construction through late 2025 and opening in early 2026. Scope was added to decarbonize the building.

Camp Long Emergency Public Works – Initial clean-up complete. Currently addressing structural stabilization, electrical, and developing a long-term plan.



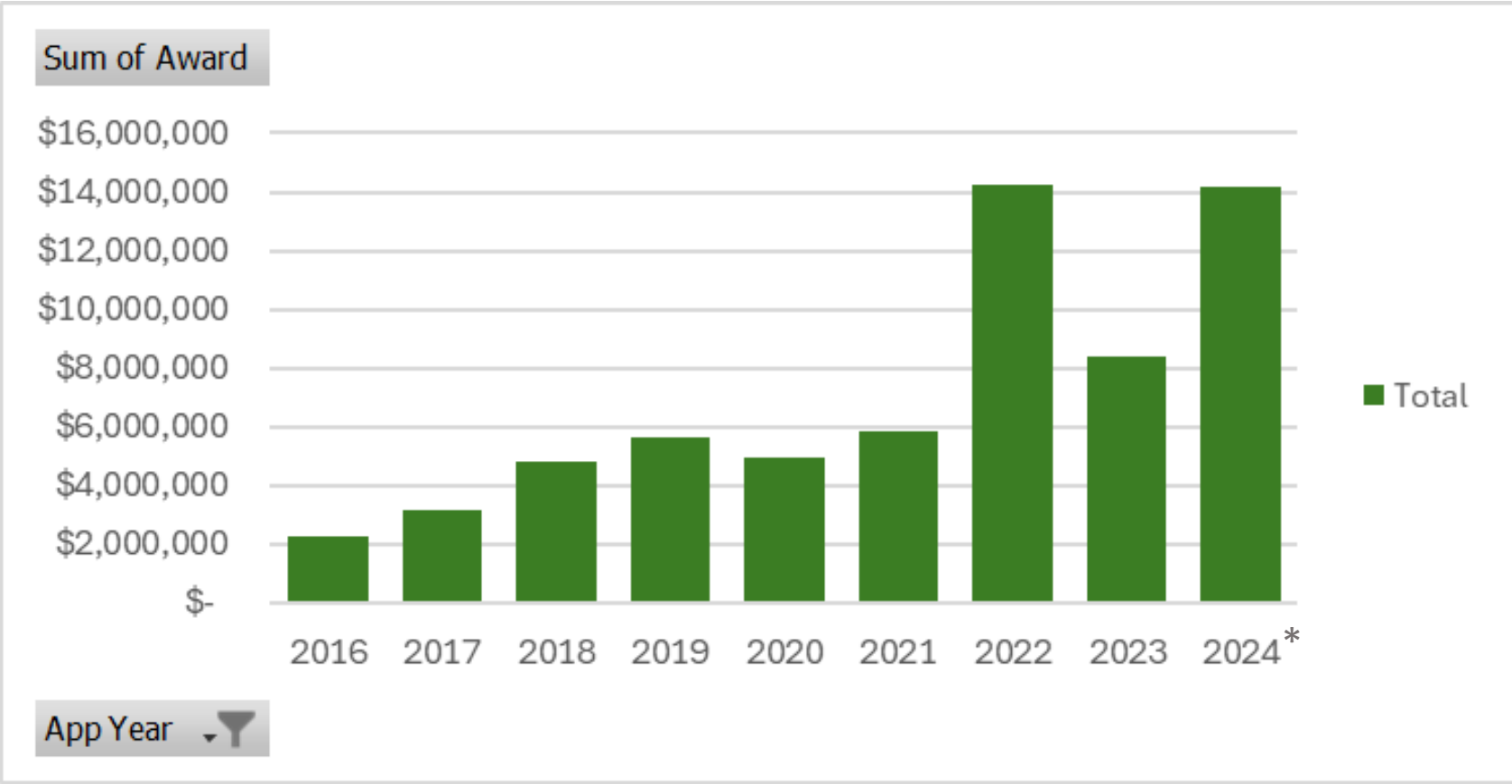
Smith Cove Development



Grant Awards by Year



Hutchinson Park



*\$6.6 million in requests pending review and recommendation



Seattle
Parks & Recreation

Healthy People, Thriving Environment, Vibrant Community



#SeattleShines

Grants Funders

- National Parks Service
- Washington State Recreation and Conservation Office (RCO)
- King County Youth & Amateur Sports
- Department of Commerce
- King County Flood Control District
- Department of Ecology
- WA Transportation Improvement Board
- Consumer Product Safety Commission



Arboretum Creek Headwaters Project

SEATTLE PARK DISTRICT CYCLE 2 PCD UPDATE

ASSET MANAGEMENT & LIFE CYCLE PROGRAM



Seattle
Parks & Recreation

As of February 2025



ACCESSIBILITY AND COMPLIANCE

824 accessibility barriers addressed
toward goal of **700**

118%



SYNTHETIC TURF REPLACEMENT

5 synthetic turf fields renovated
toward goal of **6**

83%



INFRASTRUCTURE & UTILITY PROJECTS (small & large)

8 small infrastructure and utility
projects completed toward goal of **18**

44%

2 large infrastructure and utility
projects completed toward goal of **4**

50%



MAGNUSON BUILDING & INFRASTRUCTURE PROJECTS

3 Magnuson major maintenance
projects completed toward goal of **4**

75%



AMY YEE TENNIS CENTER

Roof and insulation installed at Amy
Yee and planning initiated for phase 2



RESTROOM RENOVATIONS

5 restrooms renovated toward
goal of **27** with **3** in construction

19%



COMMUNITY CENTER MAJOR MAINT. RENOVATIONS

1 community center stabilization completed
toward goal of **6** with **3** in construction

17%



FACILITY ELECTRIFICATION/DECARBONIZATION

1 facility electrified toward goal of **8**
with **6** in design

13%



UN-REINFORCED MASONRY (URM) RETROFITS

26 assessments are underway
towards a goal of **42**



ON TRACK



CLOSELY MONITORING



REEVALUATING

SEATTLE PARK DISTRICT CYCLE 2 PCD UPDATE

ASSET MANAGEMENT & LIFE CYCLE PROGRAM



Seattle
Parks & Recreation

As of February 2025



PLAY AREA RENOVATIONS

12 play areas renovated toward goal of 33

36%



TRAIL MAJOR MAINTENANCE

2 projects to restore 3,800 feet in design toward goal of 5,000



DEDICATED PICKLEBALL COURT DEVELOPMENT

First public dedicated lit pickleball complex in the City in planning



P-PATCH RENOVATIONS

2 P-patches rejuvenated toward goal of 6

33%



SPECIAL PROJECTS

1 of 4 named park renovation projects completed with 3 in design

25%



COURT MAJOR MAINTENANCE

15 courts restored toward goal of 60

25%

1 court renovation in design toward goal of 2



POOL MAJOR MAINTENANCE

Design initiated for 4 pool maintenance and accessibility renovations toward a goal of 3-4



IRRIGATION RENOVATIONS (acres & controllers)

3 acres of irrigation renovated toward goal of 18 with more than 7 in construction

14%

26 irrigation controllers replaced toward goal of 18

144%



DRAINAGE PROJECTS

2 drainage projects complete toward goal of 3

67%



ON TRACK



CLOSELY MONITORING



REEVALUATING

SEATTLE PARK DISTRICT CYCLE 2 PCD UPDATE

CAPITAL DEVELOPMENT AND IMPROVEMENT



Seattle
Parks & Recreation

As of February 2025



AQUARIUM EXPANSION PROJECT

Support provided for Aquarium expansion



NEW PARK DEVELOPMENT SITES

CYCLE 1 COMPLETIONS

30%

3 carried-forward new park development projects completed toward goal of 10

CYCLE 2 COMPLETIONS

1 new park development project in construction and 2 in design toward goal of 4



CYCLE 2 PHASE 1 COMPLETIONS

2 new park development projects in planning for phase 1 toward goal of 2



SPECIAL PROJECTS

2 named community center renovation projects in design and 1 in planning toward goal of 5



DOG OFF-LEASH AREAS

NEW OFF LEASH AREAS COMPLETED DESIGN

Design contract initiated for development of a 3rd new dog off-leash area



NEW OFF LEASH AREAS (1 IN W. SEATTLE)

Sites selected and engagement conducted for 2 new dog off-leash areas toward promise 2



PARK COMMUNITY FUND PROCESS AND PROJECTS

15 projects selected through inclusive engagement for the Park Community Fund



ON TRACK



CLOSELY MONITORING



REEVALUATING

25 in '25! Groundbreakings and Openings Surge

Coming up in April:

Date	Park	Event
4/5/2025	Cheryl Chow Park (N. Rainier Landbank Site)	Opening/ Ribbon Cutting
4/16/2025	Westlake Park Event	Community Outreach event
4/22/2025	Bitter Lake Play Area/Restroom/ lighting	Opening/Ribbon Cutting
4/26/2025	South Park Plaza	Ribbon Cutting
4/27/2025	Salmon Bay Play Area	Ribbon Cutting

Thank you!



Healthy People, Thriving Environment, Vibrant Community

