

# Alki Beach Park – Comfort Station 57

## Project Description

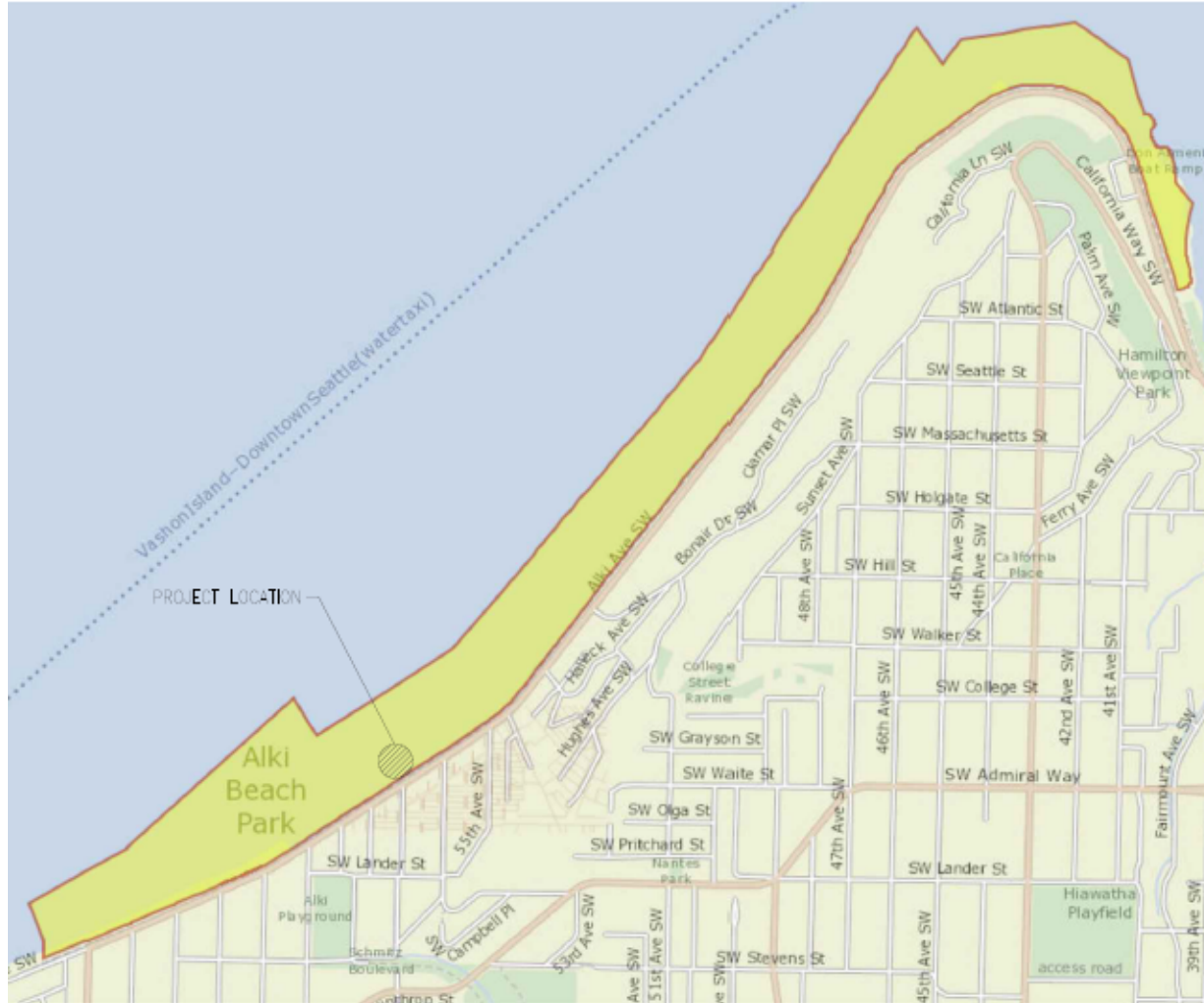
The project will address accessibility and maintenance by replacing the existing restroom structure and developing a new structure in the same location. The new building will include three all-gender facilities with individual access and will be designed to meet the standards of the Americans with Disabilities Act (ADA).



## Project Budget & Schedule

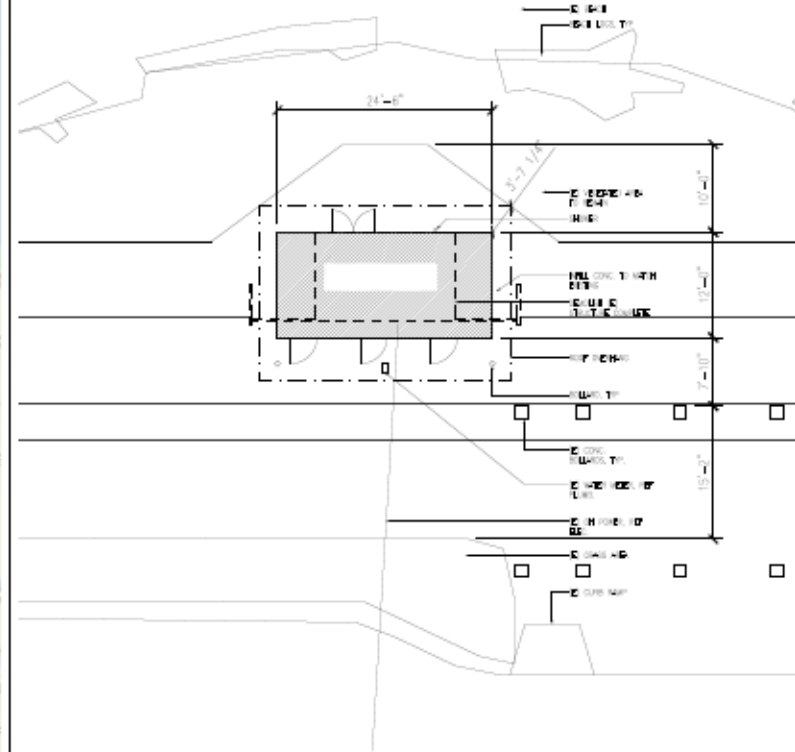
- Current Estimated Budget: \$638,000
- Estimated Schedule: Planning & Design: 2019 – Early 2020  
Construction: Spring 2020

# Alki Beach Park – Comfort Station 57



ALKI BEACH - PARCEL PLAN

1" = 50'



ALKI BEACH COMFORT STATION - SITE PLAN

1" = 1'-0"

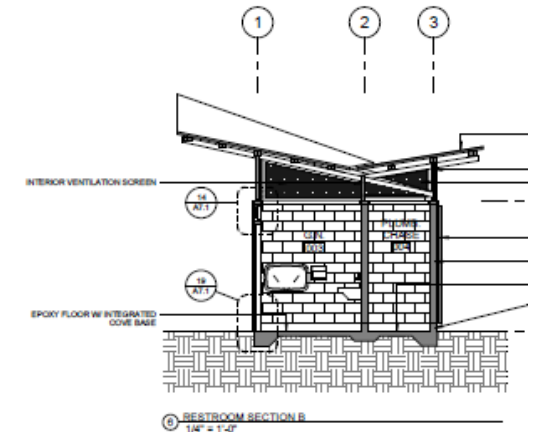
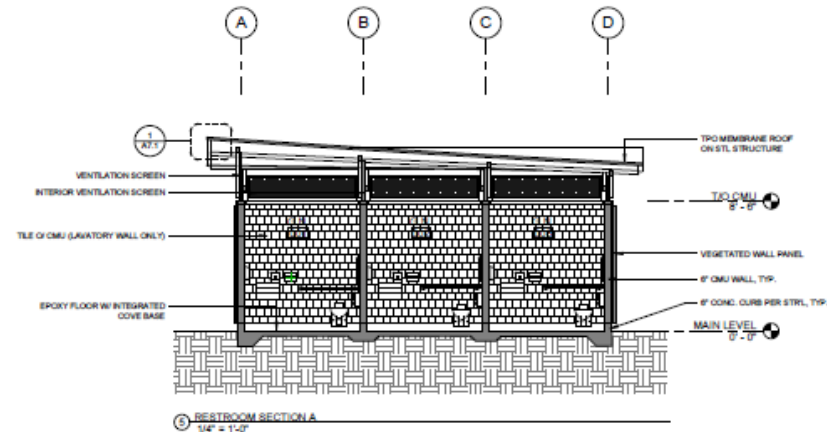
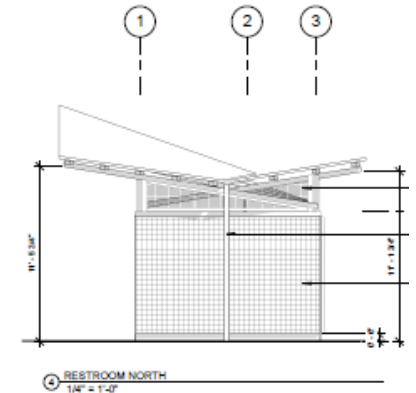
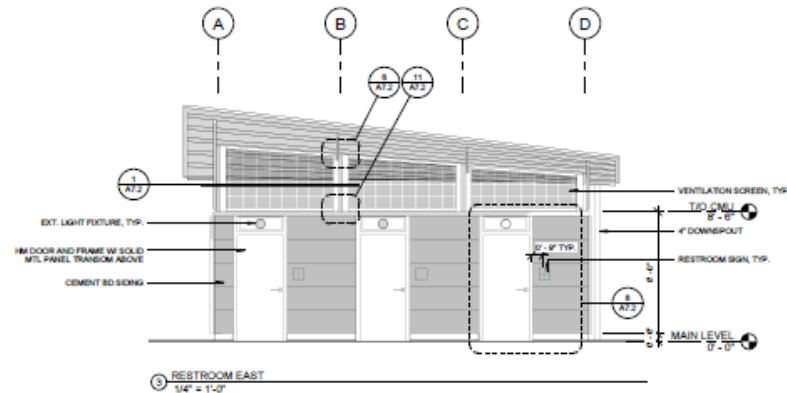
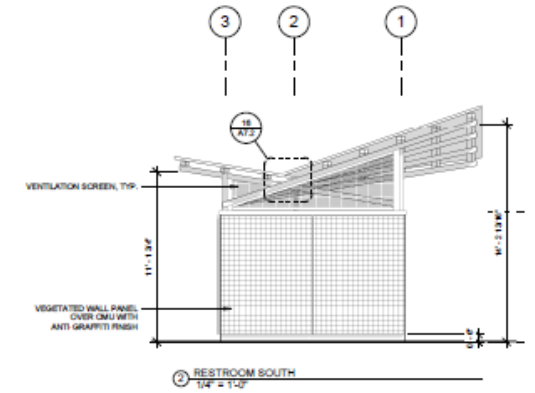
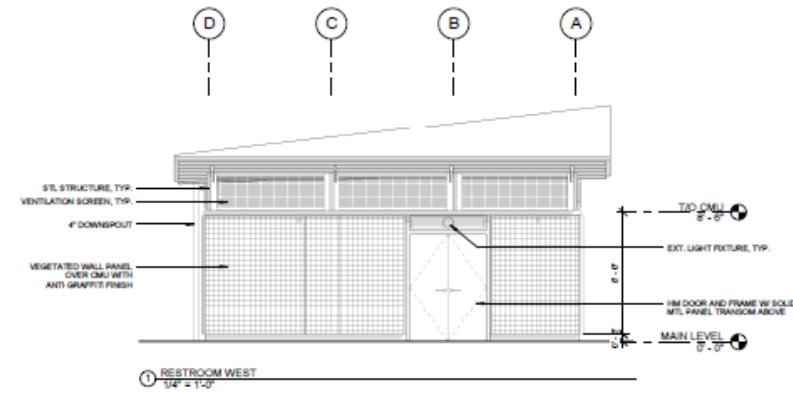


# Alki Comfort Station 57

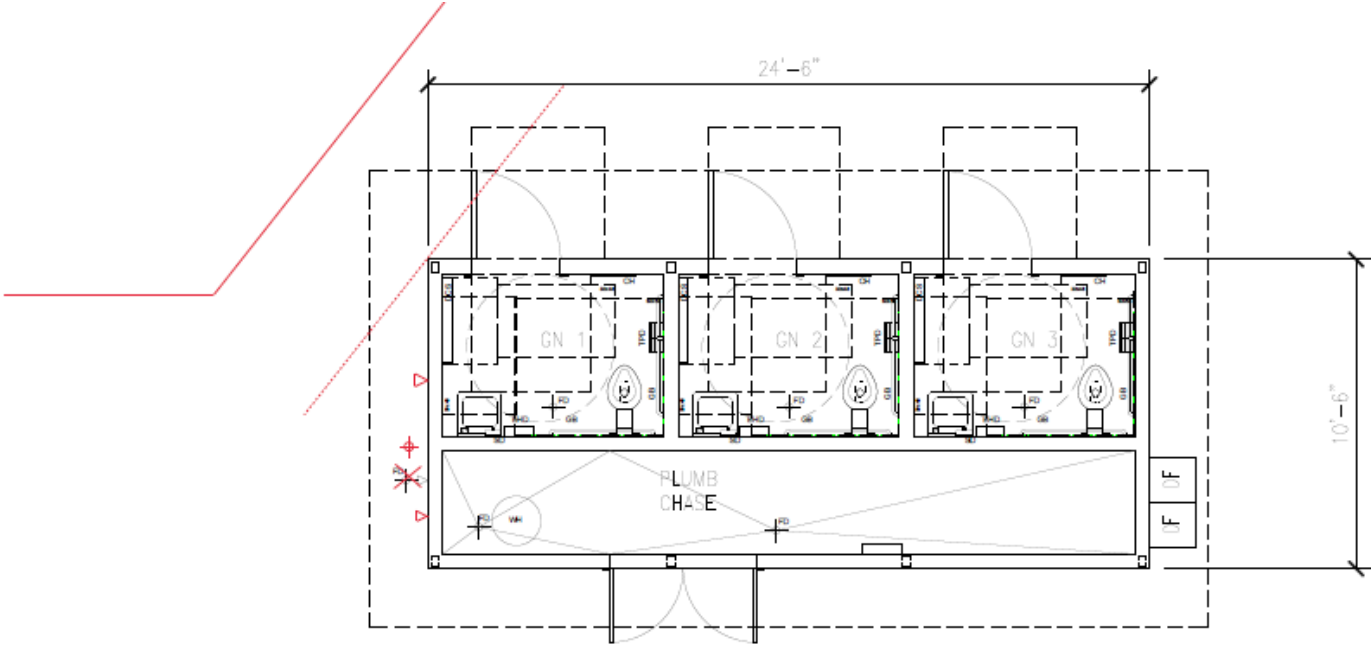
- West & South Exterior Elevations

- East and North Exterior Elevations

- Interior Elevations



# Alki Beach Park – Comfort Station 57



ACCESSORIES ABBREVIATION LEGEND  
(NOT ALL USED ON THIS PROJECT)

AP	HAMMER ARRESTOR ACCESS PANEL
ACC	ACCESSIBLE (FIXTURE OR STALL)
AMB	AMBULATORY ACCESSIBLE (FIXTURE OR STALL)
CH	COAT HOOK/PURSE HOOK
DCS	DRESS CHANGING STATION
DCH	DOOR COAT HOOK
EHD	ELECTRIC HAND DRYER
FUS	FOLDING UTILITY SHELF
GB	GRAB BAR
M	MIRROR
PH	PURSE HOOK
PTD	PAPER TOWEL DISPENSER
SC	SHARPS CONTAINER
SD	SOAP DISPENSER
SNR	SANITARY NAPKIN RECEPTACLE
SNV	SANITARY NAPKIN/TAMPON DISPENSER
TPO	TOILET PAPER DISPENSER
U	URINAL
WR	WASTE RECEPTACLE

## OPTION A

ALKI BEACH COMFORT STATION - FLOOR PLAN

