

MAJOR PROJECTS CHALLENGE FUND

Park District Oversight Committee Briefing
April 17, 2018

funded by
SEATTLE
PARK DISTRICT
INVESTING IN PEOPLE & PARKS



AND RECREATION

seattle.gov/parks

MAJOR PROJECT CHALLENGE FUND

Build for the Future is one of the primary areas of focus for the Seattle Park District. Part of Building for the Future includes the Major Projects Challenge Fund. The purpose of the Major Projects Challenge Fund is to provide a funding match, to fund a “major project” on Seattle Parks and Recreation property. The Major Projects Challenge Fund will provide City funding to leverage community-generated funding for renovation of parks and park facilities where other City funding is unavailable.

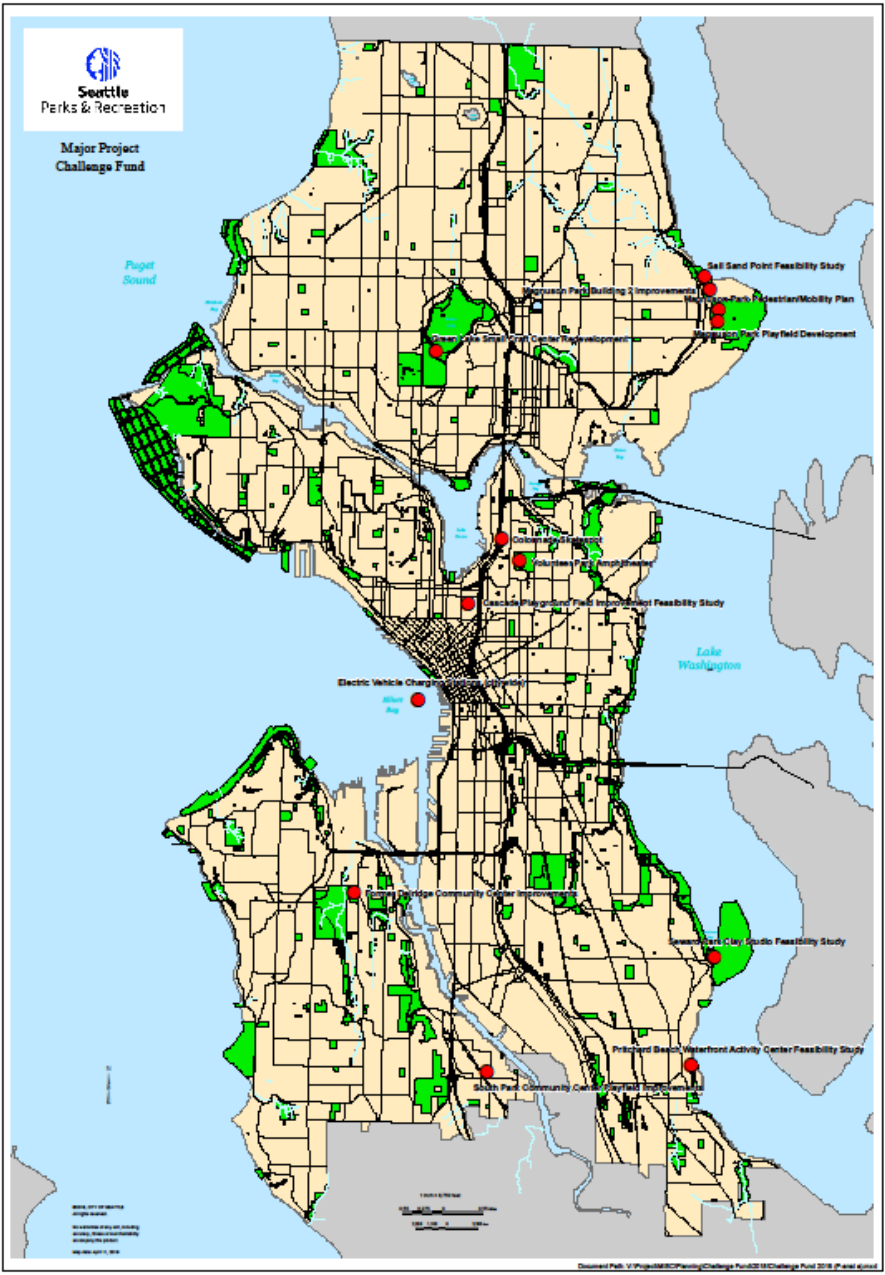
Purposely defined loosely, it is envisioned that a “major project” is a significant improvement or renovation to an existing SPR owned site or facility. It should significantly expand the life and usability of the subject facility such that it provides more opportunities for people to make use of the facility. The combination of Major Projects Challenge Fund money and community-generated money will allow for major projects to be accomplished throughout the city.

funded by
**SEATTLE
PARK DISTRICT**
INVESTING IN PEOPLE & PARKS

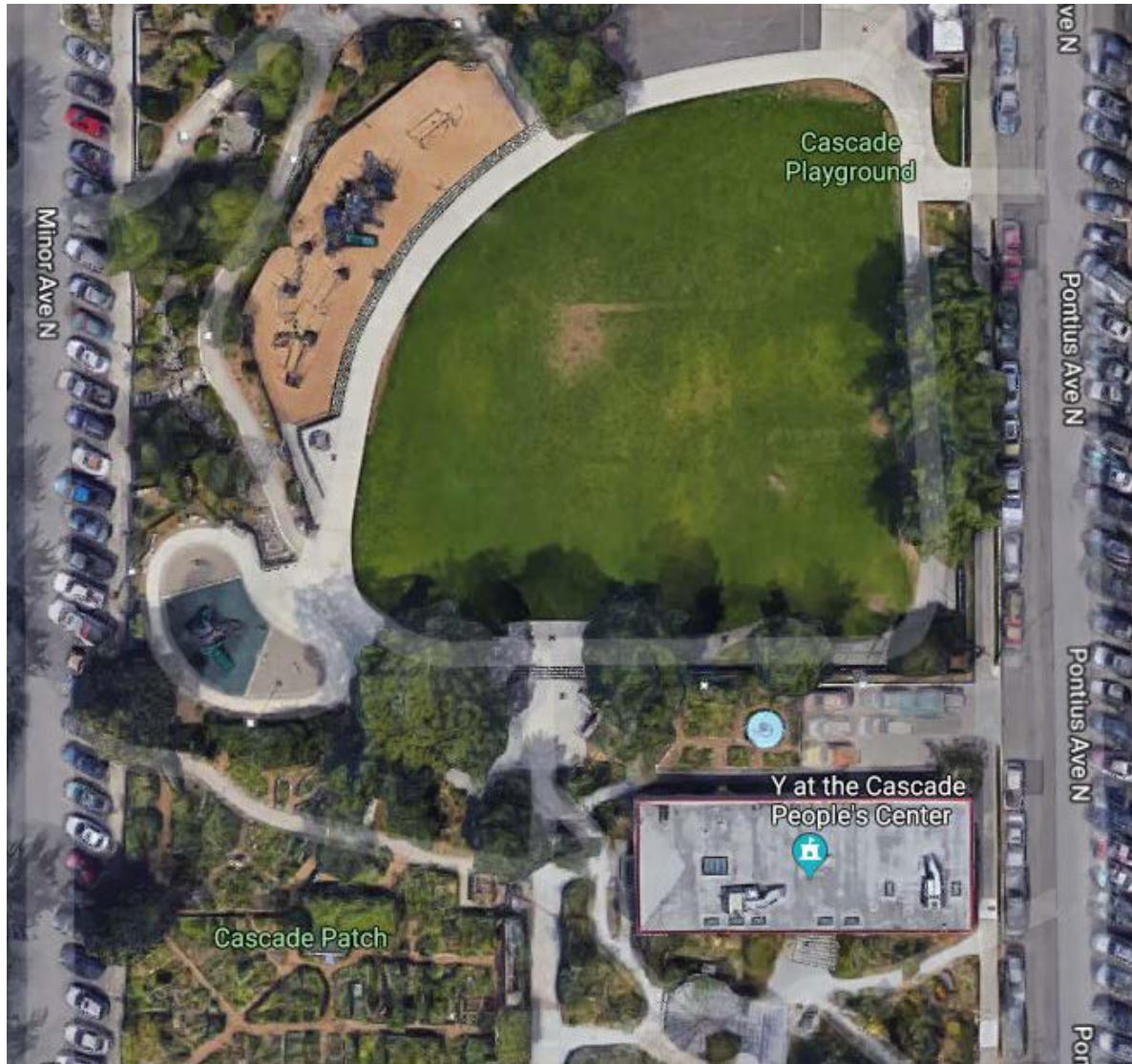


AND RECREATION

seattle.gov/parks



CASCADE PLAYGROUND FIELD IMPROVEMENT – FEASIBILITY STUDY

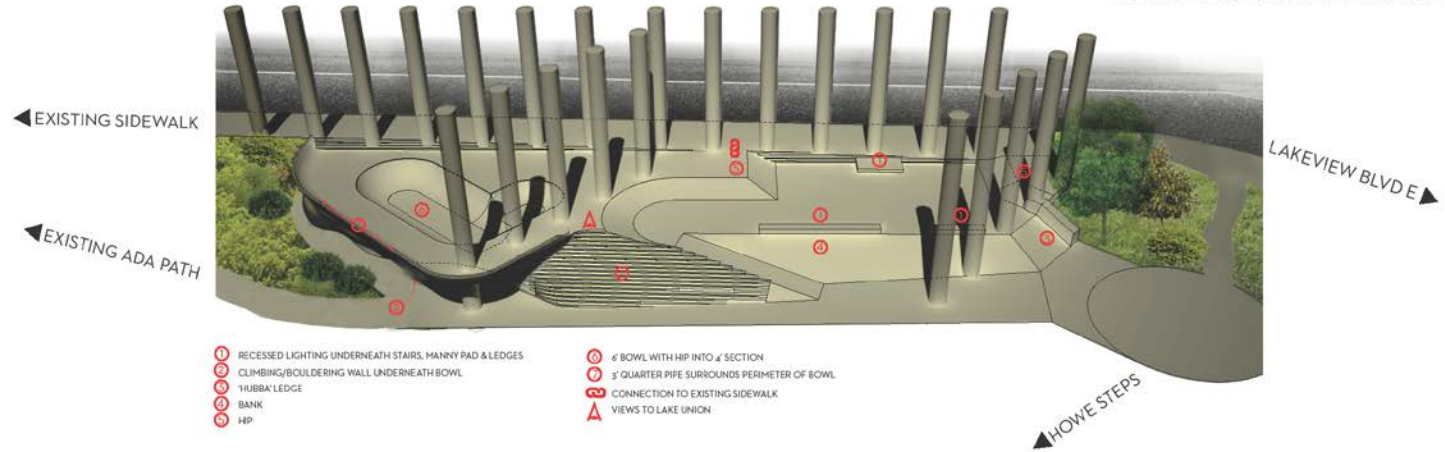


I-5 COLONNADE SKATESPOT

EASTLAKE COLONNADE SKATESPOT PROPOSAL

Intended for the northern-most end of the Colonnade Open Space (Other potentially skateable areas of the 'park' to be designed at a later date)

Graphics/Renderings by Sean Kelly & Micah Shapiro



- ① RECESSED LIGHTING UNDERNEATH STAIRS, MANNY PAD & LEDGES
- ② CLIMBING/BOULDERING WALL UNDERNEATH BOWL
- ③ TUBBA LEDGE
- ④ BANK
- ⑤ HIP
- ⑥ BOWL WITH HIP INTO 4' SECTION
- ⑦ 1/4 QUARTER PIPE SURROUNDS PERIMETER OF BOWL
- ⑧ CONNECTION TO EXISTING SIDEWALK
- ⑨ VIEWS TO LAKE UNION



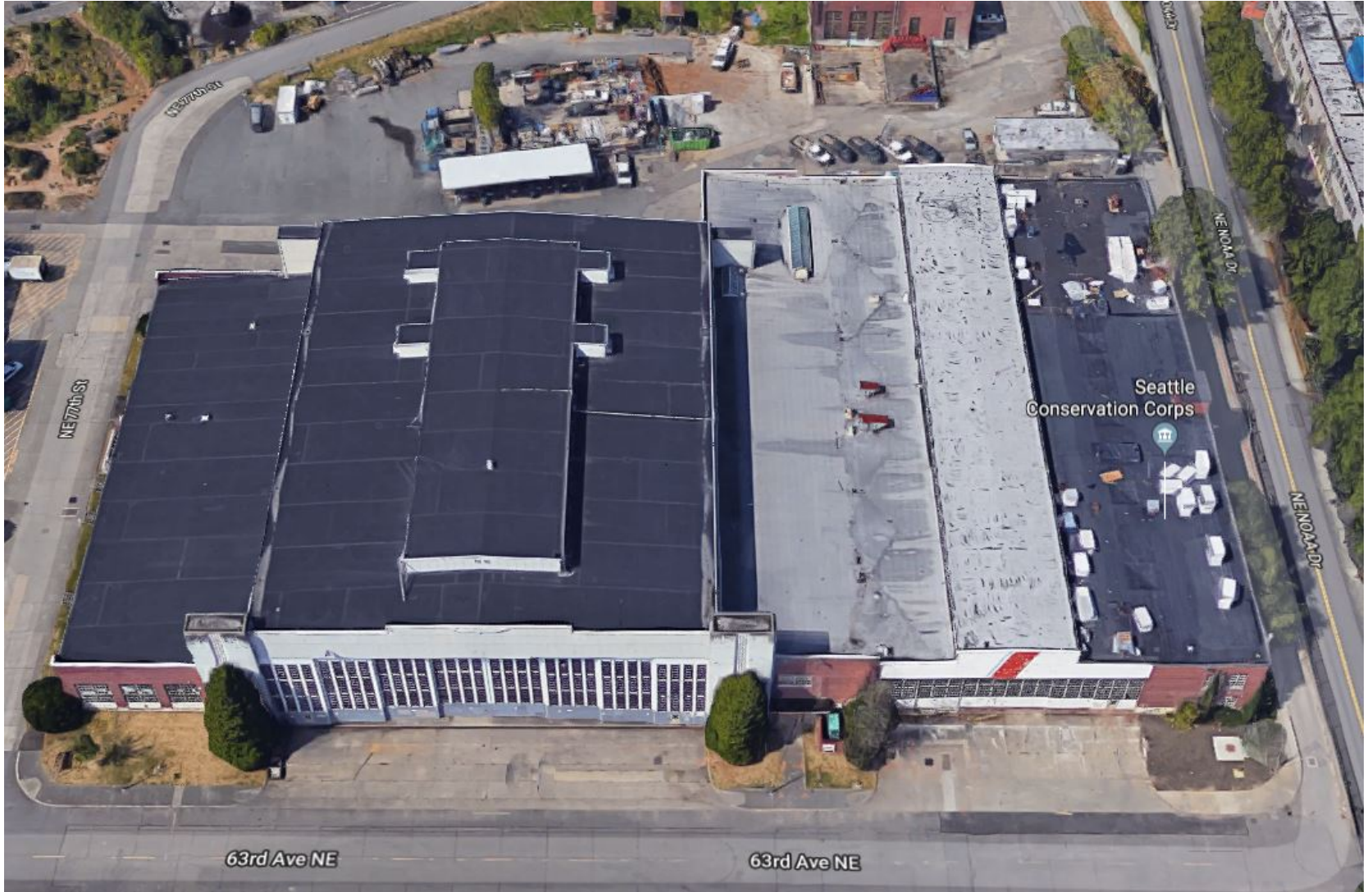
ELECTRIC VEHICLE CHARGING STATION



GREEN LAKE SMALL CRAFT CENTER



MAGNUSON PARK BUILDING 2 IMPROVEMENTS



MAGNUSON PARK PEDESTRIAN/MOBILITY PLAN



MAGNUSON PARK PLAYFIELD DEVELOPMENT



PRITCHARD BEACH WATERFRONT ACTIVITY CENTER – FEASIBILITY STUDY



SAIL SAND POINT – BOATHOUSE FEASIBILITY STUDY



SEWARD PARK CLAY STUDIO FEASIBILITY STUDY



SOUTH PARK COMMUNITY PLAYFIELD IMPROVEMENTS



South Park Community Center Final Site Wide Plan



FORMER DELRIDGE COMMUNITY CENTER IMPROVEMENTS



VOLUNTEER PARK AMPHITHEATER



QUESTIONS?

Contact info:

David Graves, AICP, Strategic Advisor

david.graves@seattle.gov

Ph.: 206.684.7048

funded by
SEATTLE
PARK DISTRICT
INVESTING IN PEOPLE & PARKS



AND RECREATION

seattle.gov/parks