



Locations Available

The following pages list available locations (subject to change) offered through the Request for Proposal (RFP) process for a 2026 Seasonal Concessions Permit.

Food Concessions Locations

All applicants are required to visit their desired locations prior to submitting an online proposal application. Sites are as depicted and vary in locations and description; most sites require self-contained mobile units that are required to be removed at the end of each business day. Vendors are responsible for confirming availability of public restrooms prior to submitting an application.

Non-Food Concession Locations

Additional parks may be considered. Applicants must submit a site plan showing how the business will fit into the park while adhering to park rules and without impacting safety and park operations.

All proposal applications must be submitted through the online proposal application. Deadline to submit a proposal application is **February 6, 2026, at 3pm.**

Concession Use Fees

Peak season rates: May 1 – September 30

Off-peak rates: October 1 – April 30

Leasehold Excise Tax of 12.84% applies to monthly concession use fees

Tier levels are determined by a variety of factors, including park attendance, size, and need of activation and services.	Peak Rates	Off-Peak Rates
Tier 1 Parks: Alki Beach Park, Adams Boat Launch, Matthews Beach Park	\$600/month	\$100/month
Tier 2 Parks: Bergen Place, Golden Gardens Park (Non-Food Only), Lake Union Park, Madison Beach Park, Magnuson Park, Lowery C. "Pop" Mounger Pool, Seward Park	\$300/month	\$75/month
Tier 3 Parks: Be'er Sheva Park, Cal Anderson Park, Carkeek Park, Delridge Playground, Jefferson Park, Lincoln Park, Lower Woodland Playfield, Mount Baker Beach, North Acres Park, Pritchard Beach Park, Stan Sayres Park, Volunteer Park	\$150/month	\$75/Month
Concessions Inside Facility: Madrona Beach Park Concession Stand	\$1000 per month	\$200 per month

1. ADAMS STREET BOAT RAMP

4200 Lake Washington Blvd S

Description: A hand-carry boat launch with a 50-foot section of shoreline located at the northern end of the public parking lot at Adams St. and Lake Washington Blvd. S.

Space/Site Available: The concessionaire will coordinate the concession location with the Parks Concessions Coordinator.

***No restroom. *May NOT vend during Seafair weekend.**

Fees: The concessionaire fee is \$600 per month.



2. ALKI BEACH PARK #1

57TH and Alki SW

Description: Busy beach location with pedestrian promenade, sand volleyball courts, and public restroom.

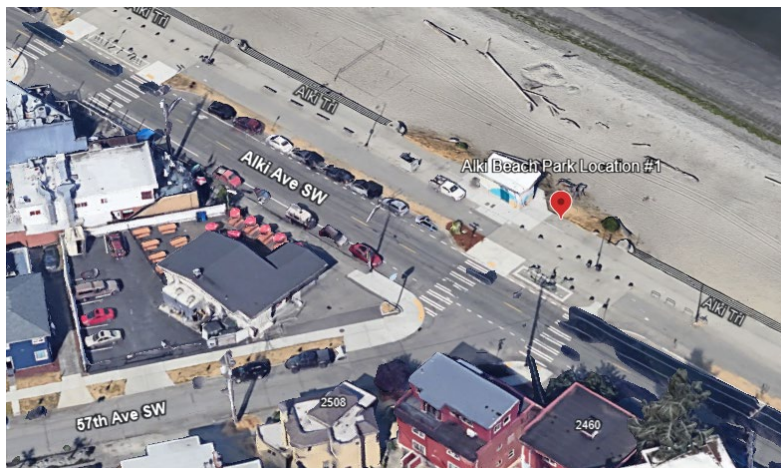
Space/Site Available: An off-street paved walkway area next to the 57th Street public restroom on Alki Avenue. This is a small site and not appropriate for a large truck. The proposed business must suite the space available.

Electricity may be available from an existing electrical service on the public restroom wall; the proposer must verify the electrical service prior to submitting a proposal.

The public restrooms may not be open at all times.

Fees: The concessionaire fee is \$600 per month.

This location has a number of special events in the summer at which the concessionaire may or may not be permitted to vend.



3. ALKI BEACH PARK #2 ALKI BEACH

Between 59TH & 60TH

Description: Busy beach location with pedestrian promenade, sand volleyball courts, and public restroom.

Space/Site Available: An off-street area north of the bathhouse and next to the grass area. Between 59th SW and 60th SW on Alki Avenue. This is a small site and not appropriate for a large truck. The proposed business must suite the space available.

No utilities available.

Fees: The concessionaire fee is \$600 per month.

This location has a number of special events in the summer at which the concessionaire may or may not be permitted to vend.



4. BE'ER SHEVA PARK

8650 55th Ave S

Description: A community park located in southeast Seattle. This spot is popular for picnics, community gatherings, yoga classes and more.

Space/Site Available: A paved space for a cart or small food truck. This location has many special events in the summer (Thursdays, Saturdays & Sundays) at which the concessionaire may not be permitted to vend. Limited weekday vending availability.

Fees: The concessionaire selected will pay \$150 per month during peak season.



5. BERGEN PLACE

5240 22nd Ave NW

Description: A community park located in the heart of the Ballard business district.

Space/Site Available: A paved space for a cart. The concessionaire will coordinate the concession location with SPR staff. The park is not accessible to a food truck or other vehicle.

No restroom, vendor must obtain a restroom agreement from location within 500 feet of location.
No vending on Sundays or during Seafood Fest weekend.

No electricity and no storage in the park.

Fees: The concessionaire selected will pay \$300 per month during peak season.



6. CAL ANDERSON PARK

1635 11th Ave E

Description: Youth and adult ball games, playground, wading pool, artistic water feature serves as a gathering place.

Space/Site Available: A paved space for a cart. The concessionaire will coordinate the concession location with SPR staff. Cart must be pushed into the park.

Fees: The concessionaire selected will pay \$150 per month during peak season.



7. CARKEEK PARK

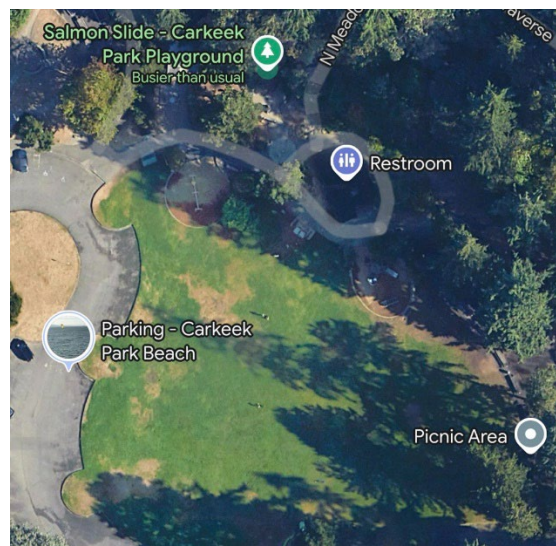
950 NW Carkeek Park Rd

Description: A large park with play and picnic areas, hiking trails, and beach access.

Space/Site Available: Concessionaire may set up near restrooms. Location to be determined by Parks Concessions Coordinator.

No electricity or storage in the park.

Fees: The concessionaire selected will pay \$150 per month during peak season.



8. DELRIDGE PLAYGROUND

4458 Delridge Way SW

Description: Site is near the playfield that features large open lawn spaces perfect for playing catch or flying a kite, and big trees.

Space/Site Available: Location to be determined in coordination with the Parks Concession Coordinator.

Hours limited to community center hours of operation for access to public restroom.

Fees: The concessionaire selected will pay \$150 per month during peak season.

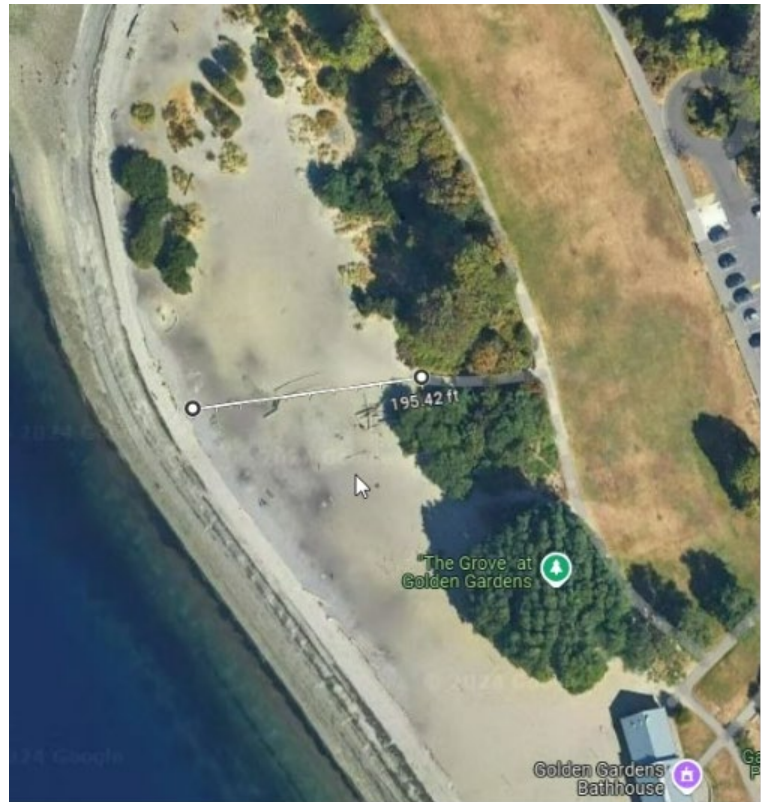
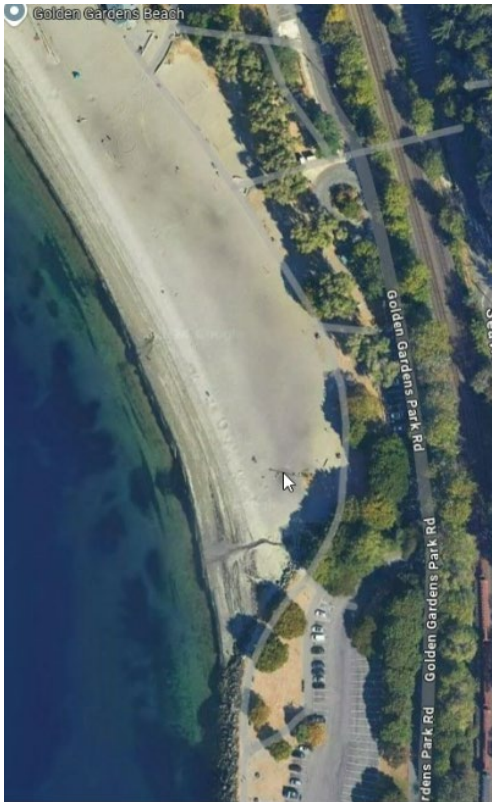


9. GOLDEN GARDENS PARK *Non-Food Only*
8498 Seaview PI NW

Description: Located in Ballard on Puget Sound, this popular park offers extraordinary views of Puget Sound and the Olympic Mountains. This park features two wetlands, a short loop trail, and restored the northern beach.

Space/Site Available: Non-food concession only, example: standup paddleboard rental. Location to be determined in coordination with the Parks Concession Coordinator. No self-service vending.

Fees: The concessionaire selected will pay \$300 per month during peak season.



10. JEFFERSON PARK

3801 Beacon Ave S 98108

Description: Jefferson Park features a playground, skate park, spray feature, and paved walking lights.

Space/Site Available: A space without utilities is available for a food truck or other self-contained concessionaire. Site to be agreed upon between SPR and concessionaire and with approval by SPR staff. Please submit a site plan map with your proposal.

Hours restricted to the community center hours for access to public restroom.

No electricity and no storage in the park. May not vend during Beacon Hill Fest (1st weekend in June).

Fees: The concessionaire selected will pay \$150 per month during peak season.



11. LAKE UNION PARK

860 Terry Ave N

Description: A unique urban gem, close to the center of downtown Seattle. This park provides access to green space and the water.

Space/Site Available: Multiple spaces without utilities available for a food truck or other self-contained concessionaire. Concessionaires may not vend the same food or snack items as other vendors in the park.

Hours available only during open hours of MOHAI or Center for Wood Boats for access to public restrooms.

Fees: The concessionaire selected will pay \$300 per month during peak season and \$75 per month off-peak.

This location has a number of special events at which the concessionaire may not be permitted to vend.



12. LINCOLN PARK

8011 Fauntleroy Way SW

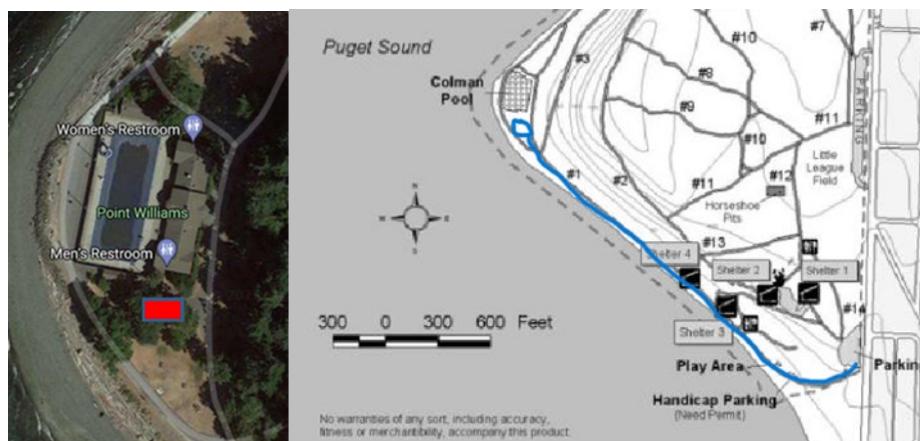
Description: This West Seattle Park contains ballfields, playgrounds, picnic sites, miles of trails, and a heated saltwater pool.

Space/Site Available: A space without utilities is available for a food truck or other self-contained concessionaire. There is no storage or overnight parking. Please include a site plan map with your proposal.

Special Note: The selected concessionaire may not sell products with heavy syrups, as syrups have been known to attract bees and wasps. Popcorn and similar items that are spread by the wind are likewise not permitted.

Use of a generator is not permitted at this location. Electricity may be available from an existing electrical service; the proposer must have a qualified electrician verify the electrical service prior to submitting a proposal.

Fees: The concessionaire selected will pay \$150 per month during peak season. A key deposit is required.



13. LOWER WOODLAND PARK

1000 N 50th St.

Description: Lower Woodland Park is a busy park location with ballfields in use throughout the summer.

Space/Site Available: Concessionaire sought for ballfields during busy/heavily scheduled days. Schedule may vary but must include weekends through the summer.

There are no utilities, storage, or overnight parking.

Fees: The concessionaire will pay the seasonal peak fee of \$150 per month.



14. LOWERY C. "POP" MOUNGER POOL

2535 32nd Ave W

Description: A busy community pool located in the heart of Magnolia, close to the Magnolia Village commercial core.

Space/Site Available: A food service alcove approximately 12 feet wide by 4 feet deep is available for a concession stand. Food service area is equipped with locking gates that would allow for secure storage during non-operating hours. During concession hours, a large space of approximately 12 feet wide by 6 feet deep would be allocated by expanding the Food Service area out onto the pool deck. The concessionaire at this location will be asked to carry a small inventory of swim diapers in addition to food products.

The food service area does not include any cooking facilities, but it is equipped with 208V 40W electricity. Potable water and hand washing facilities are adjacent to the food service area. The vendor would need to provide a rolling table or counter with locking wheels. The table would need to have a closed front, and appear neat, clean and well-maintained. The unit would be able to roll out approximately 2 feet during operation hours and then be rolled back and locked in the secure food service area.

Fees: The concessionaire selected will pay \$300 per month during peak season. A key deposit is required.



15. MADISON PARK

E Madison and Howe St

Description: A lovely grass park on the shores of Lake Washington.

Space/Site Available: A 10x10 space without utilities is available for a self-contained concession. The vending location is at the top of the hill near Howe St & 43 Ave E - circled on map.

No power, no water, no storage.

No parking available.

Fees: The concessionaire selected will pay \$300 per month during peak season.



16. MADRONA BEACH PARK CONCESSION STAND

853 Lake Washington Blvd

Description: Madrona Beach Park is a lovely grassy park on the shores of Lake Washington.

Space/Site Available: The concession area is located at the south end of building and includes one main room of approximately 400 square feet and a small storage space at the entrance of the concession. The main space has a three-compartment sink, a hand wash sink, and areas that would accommodate a refrigerator, freezer, and some storage. There are two roll-up windows on two walls of the building. ***NO APLIANCES OR COOKING EQUIPMENT PROVIDED.**

Proposers are encouraged to offer services and/or products that would be complimentary to the existing uses of the park. Each proposer should include healthy food products as part of their proposed menu. SPR reserves the right to approve or deny any proposed business activity.

No Wi-Fi or internet connection within the concession stand.

Fees: The concessionaire selected will pay \$1,000 per month during peak season (May – September) and \$200 per month off-peak (October – April).



17. MAGNUSON PARK – OFF-LEASH DOG PARK PARKING LOT #1 & #2

NE 74th St Entrance

Description: A lovely grass park on the shores of Lake Washington.

Space/Site Available: A space without utilities is available for self-contained concessions. Two vending sites at off-leash parking lot.

Space #2 cannot be selected as first choice as this location may become unavailable.

Vendors may not offer the same services or menu items.

Use of a gas generator is not permitted at this location. There is no overnight parking, storage, electricity, or water.

Fees: The concessionaire selected will pay \$300 per month during peak season.



18. MAGNUSON PARK – PARKING LOT NEAR KITE HILL

NE 65th St Entrance

Description: A lovely grass park on the shores of Lake Washington.

Space/Site Available: A space without utilities is available for a self-contained concession. 1 vending site at parking lot near Kite Hill. Vendor must park in a parking space. This is not a reserved space so the concessionaire should arrive early. Vending on Saturdays & Sundays is restricted to after 2pm.

Use of a gas generator is not permitted at this location. There is no overnight parking, storage, electricity, or water.

Fees: The concessionaire selected will pay \$300 per month during peak season.



19. MAGNUSON PARK - Mobile

Description: A lovely grass park on the shores of Lake Washington.

Space/Site Available: Mobile vending through the park for ice cream vendor.

Use of a gas generator is not permitted at this location. There is no overnight parking, storage, electricity, or water.

Fees: The concessionaire selected will pay \$300 per month during peak season.



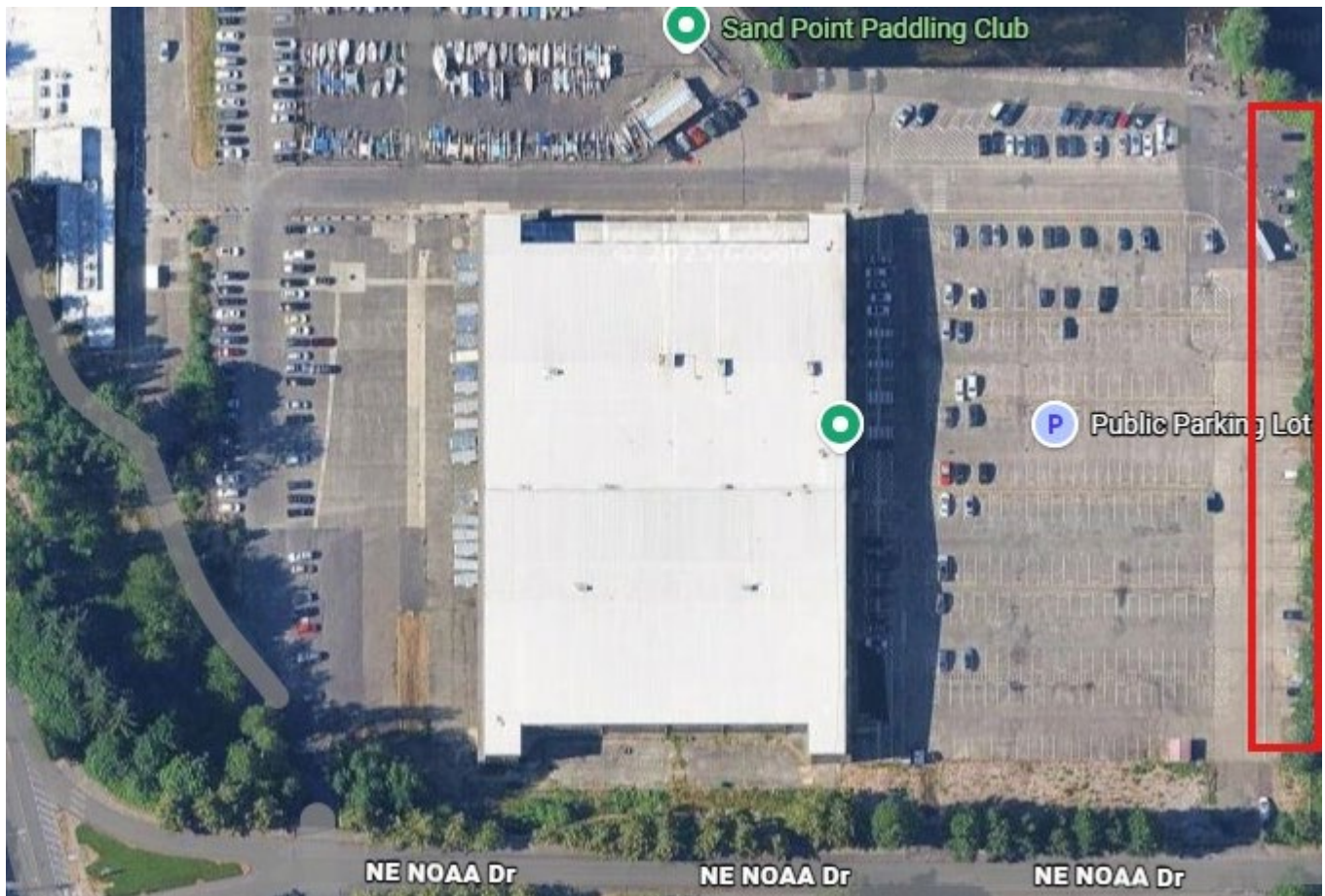
20. MAGNUSON PARK - Northshore

Description: A lovely grass park on the shores of Lake Washington.

Space/Site Available: Unreserved parking space along fence, see red rectangle in picture below.

Use of a gas generator is not permitted at this location. There is no overnight parking, storage, electricity, or water.

Fees: The concessionaire selected will pay \$300 per month during peak season.



21. MATTHEWS BEACH PARK

9300 51st Ave NE

Description: Seattle's largest freshwater bathing beach. There are picnic areas, a playground, and basketball courts.

Space/Site Available: A parking lot location within the park or small concession available.

The concessionaire should arrive early to obtain parking.

Limited on-site storage with electrical service for one freezer or refrigerator may be available.

Fees: The concessionaire selected will pay \$600 per month during peak season. A key deposit may be required for this location.

Note: The beach at this location has had periods of closure due to water quality during the summer.



22. MOUNT BAKER BEACH PARK

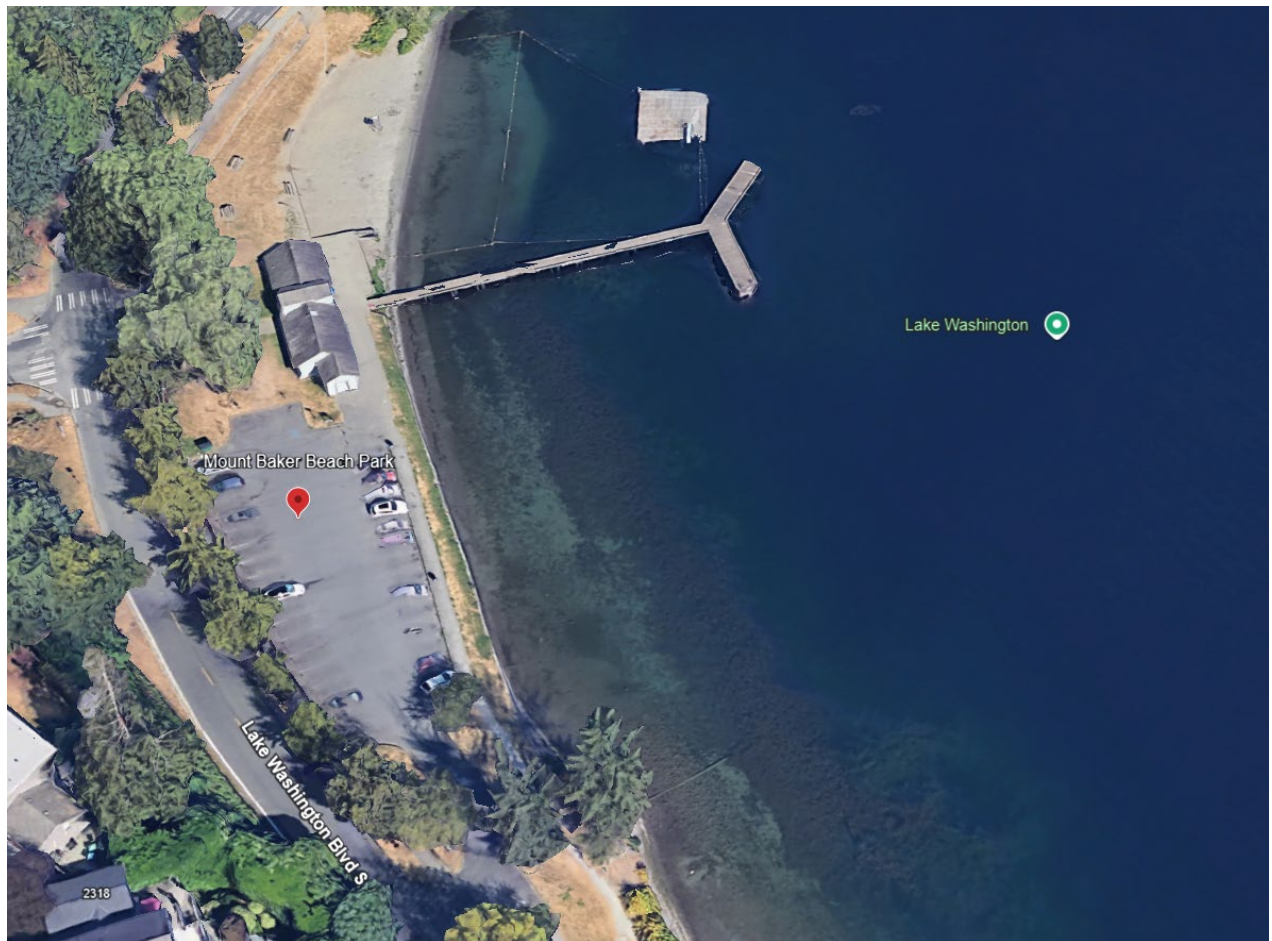
2205 Lake Washington Blvd S

Description: Freshwater bathing beach on the shores of Lake Washington.

Space/Site Available: A space without utilities is available for a self-contained concession. The concessionaire will coordinate concession location with SPR staff.

Fees: The concessionaire selected will pay \$150 per month during peak season.

*This location is available contingent on completion of construction project.



23. NORTHACRES PARK

12718 1st Ave NE

Description: A busy park with two ballfields, play area, an off-leash dog park and a spray park.

Space/Site Available: The concessionaire will coordinate the concession location with SPR staff. Location works well for mobile vending.

No electricity and no storage in the park.

Fees: The concessionaire will pay the seasonal peak fee of \$150 per month.



24. PRITCHARD BEACH

8400 55th Ave S.

Description: A busy waterfront park with a swimming beach and beautiful waterfront views.

Space/Site Available: A space without utilities is available for a food truck or other self-contained concession. Power and water may be available from the bathhouse if approved by SPR. The concessionaire will coordinate the concession location.

Fees: The concessionaire will pay the seasonal peak fee of \$150 per month.



25. SEWARD PARK

5895 Lake Washington Blvd S.

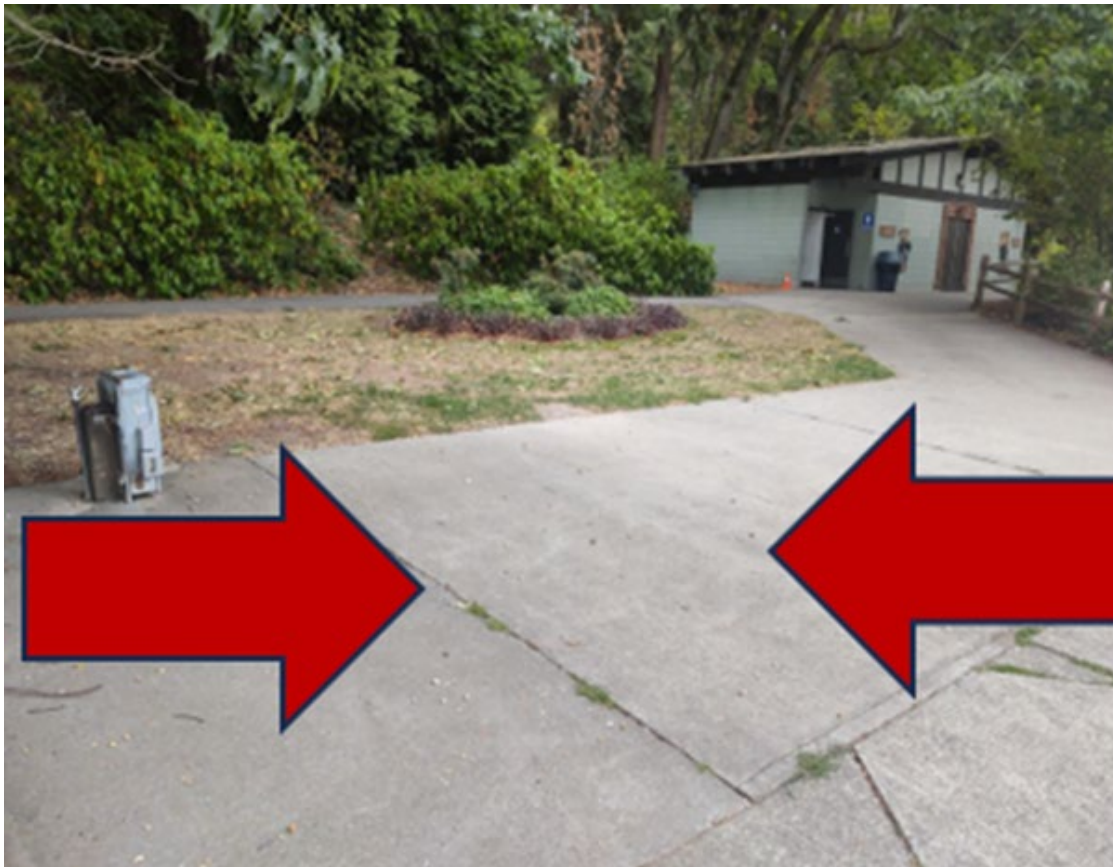
Description: 300-acre park located in Southeast Seattle with trails, tennis courts, swim beach and picnic areas.

Space/Site Available: A space without utilities is available for a food truck or other self-contained concession. This space is located near the Seward Park Environmental & Audubon Center.

Requests for an alternate location within the park will not be considered.

The concessionaire selected at this location will be asked to carry a small inventory of swim diapers for sale. This location has a number of special events (2-3 days each month) in the summer at which the concessionaire may not be permitted to vend.

Fees: The concessionaire will pay the seasonal peak fee of \$300 per month and off-peak \$75 per month.



26. STAN SAYRES PARK

3808 Lake Washington Blvd S

Description: The home of the Mt. Baker Rowing and Sailing Center, Stan Sayres boasts beautiful mountain views.

Space/Site Available: A space without utilities is available for a food truck or other self-contained concession.

Fees: The concessionaire will pay the seasonal peak fee of \$150 per month.

Note: This permit does NOT authorize vending during Seafair.



27. VOLUNTEER PARK

14TH Ave E and E Prospect to Roy St.

Description: Busy park with a playground, wading pool, gardens, and other amenities.

Space/Site Available: Two street parking locations within the park. These are not reserved spaces so the concessionaire should arrive early. Overnight parking is not allowed. The concessionaire will coordinate the concession location with SPR staff.

There are no utilities or storage available.

Fees: The concessionaire will pay the seasonal peak fee of \$150 per month.

