

GENERAL NOTES

1. RECORD DRAWINGS ARE MISSING FOR THIS FLOOR. ALL EXISTING ELECTRICAL INFORMATION IS FROM FIELD OBSERVATIONS.

NOTES THIS SHEET

- 1 RELOCATE PANEL A TO GROUND FLOOR. EXTEND EXISTING BRANCH CIRCUITS TO REMAIN IN SERVICE TO NEW LOCATION.
- 2 PROVIDE NEW PANEL AND NEW FEEDER CONDUCTOR IN EXISTING CONDUIT. RECONNECT BRANCH CIRCUITS. RECONNECT LIGHTING CIRCUITS FROM ABANDONED PANEL G TO PANEL F.
- 3 PROVIDE NEW PANEL AND NEW FEEDER CONDUCTOR IN EXISTING CONDUIT. RECONNECT BRANCH CIRCUITS TO REMAIN IN SERVICE. CIRCUIT NEW STAGE LIGHTING CIRCUITS AS SHOWN ON SHEET E202. INTERCEPT EXISTING CONDUIT UNDER FLOOR AND EXTEND TO NEW PANEL.
- 4 PROVIDE NEW PANEL AND FEEDER CONDUCTORS IN EXISTING CONDUIT. RECONNECT EXISTING BRANCH CIRCUITS.
- 5 PUSH BUTTON FOR ELEVATOR DOOR CONTROL.

CONSTRUCTION DOCUMENTS



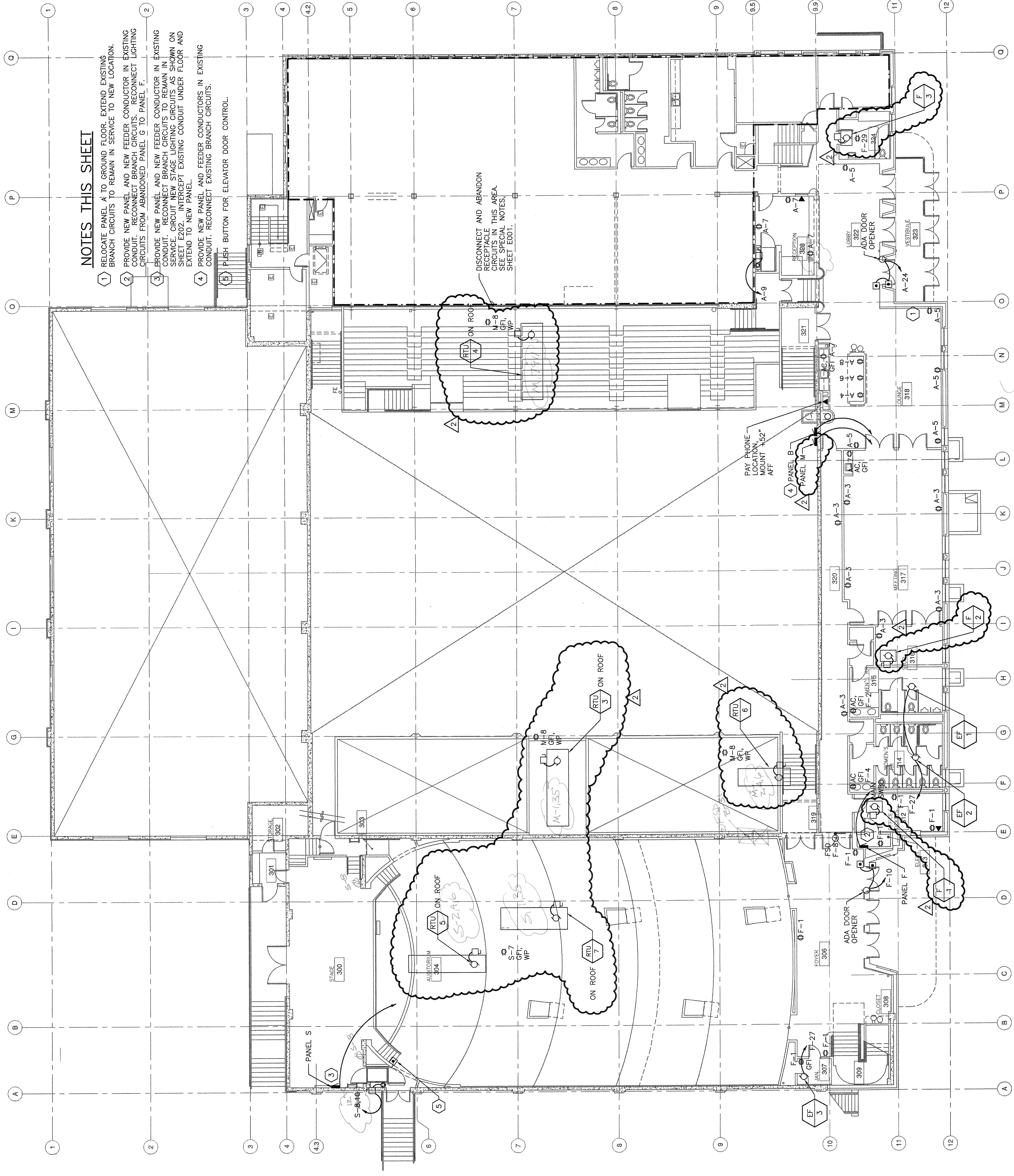
NO.	REVISION - AS BUILT	DATE
3	OWNER REVISIONS	6/11/03
2	PERMIT CORRECTIONS	7/15/02
1		

REVIEWED: PARK ENGINEER DATE
 All work shown in accordance with the City of Seattle Standard Specifications for Electrical Work, and supplemented by Special Provisions.

PAATH ENGINEERS, LLC
 17928 BOTHELL EVERETT HWY SE, SUITE H
 BOTHELL, WASHINGTON 98012
 (425) 481-7735 FAX (425) 481-7692
 CONTACT: FRANK STARR
 JOB NUMBER: 003261

DESIGNED	RHS	DATE	JUNE 11, 2003
DRAWN	MDW	DESIGN REVIEW	
CHECKED	LBS		
ORDINANCE NO.	118812 & 119987		
CONTRACT NO.	1616	SHEET	72 OF 76
SCALE	1/8" = 1'-0"		

E302



MAIN FLOOR POWER PLAN
 SCALE: 1/8" = 1'-0"

