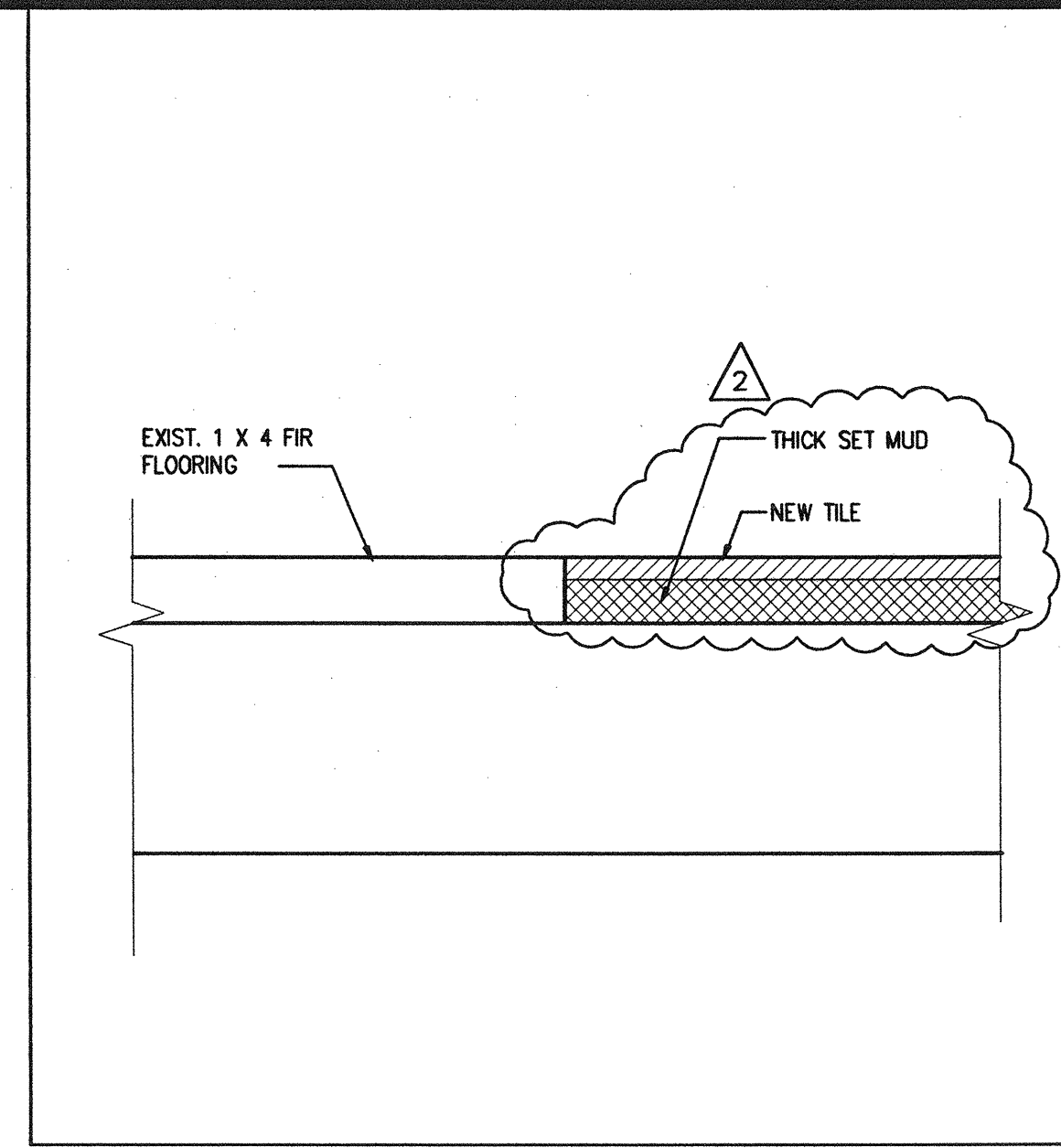
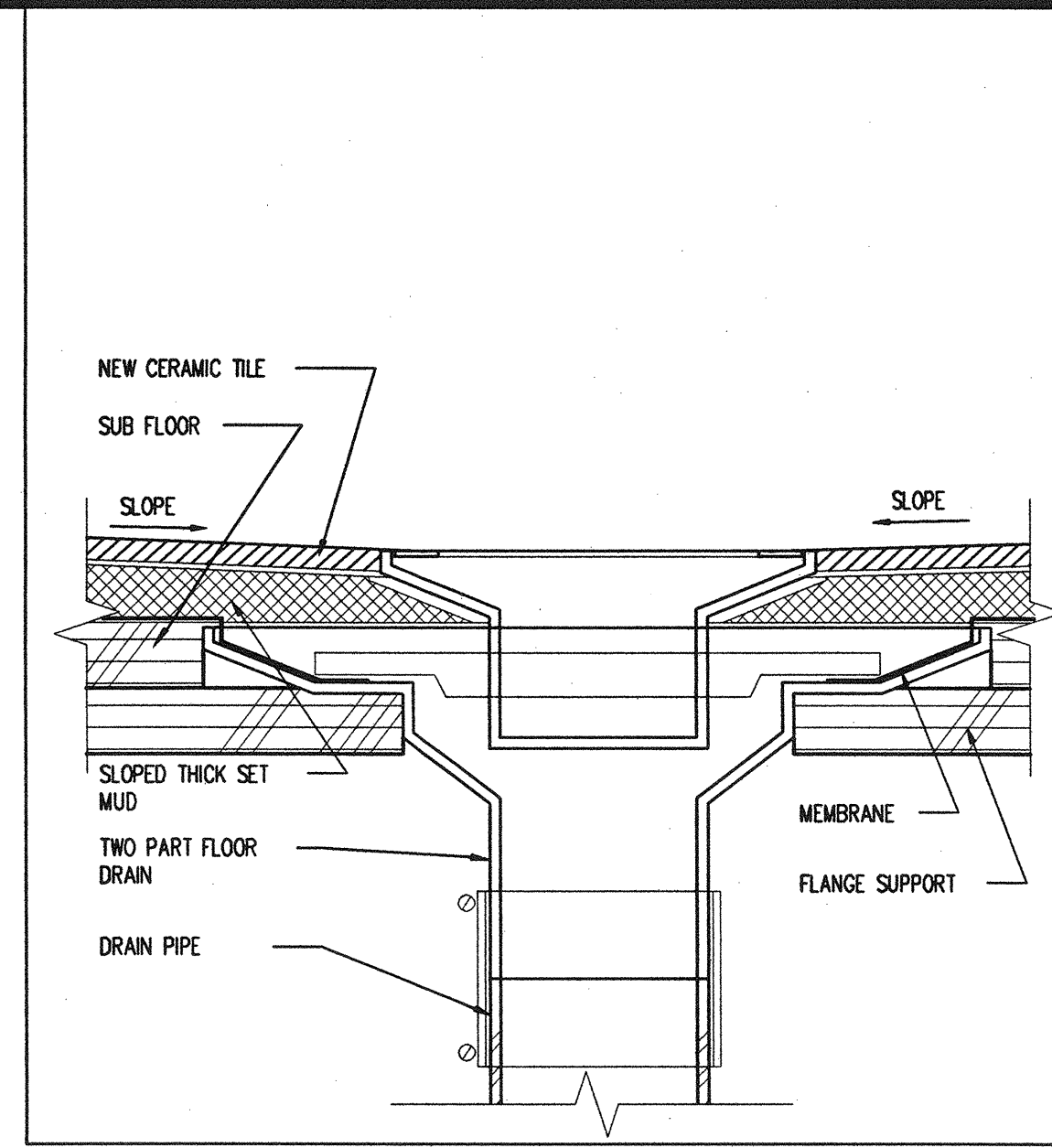


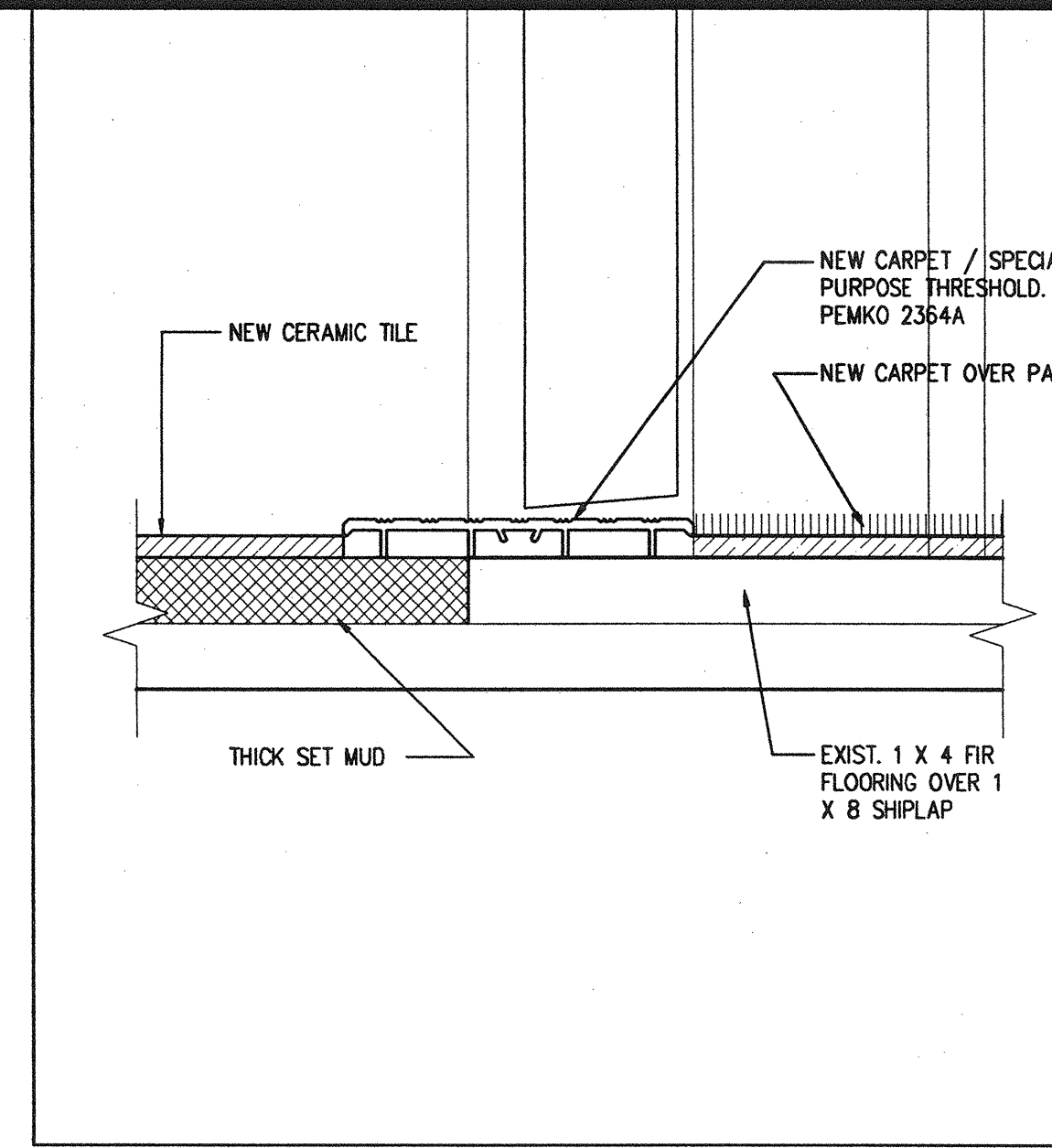
**1 FLOOR TRANSITION DETAIL**  
SCALE: 6" = 1'-0" DE-FL-7



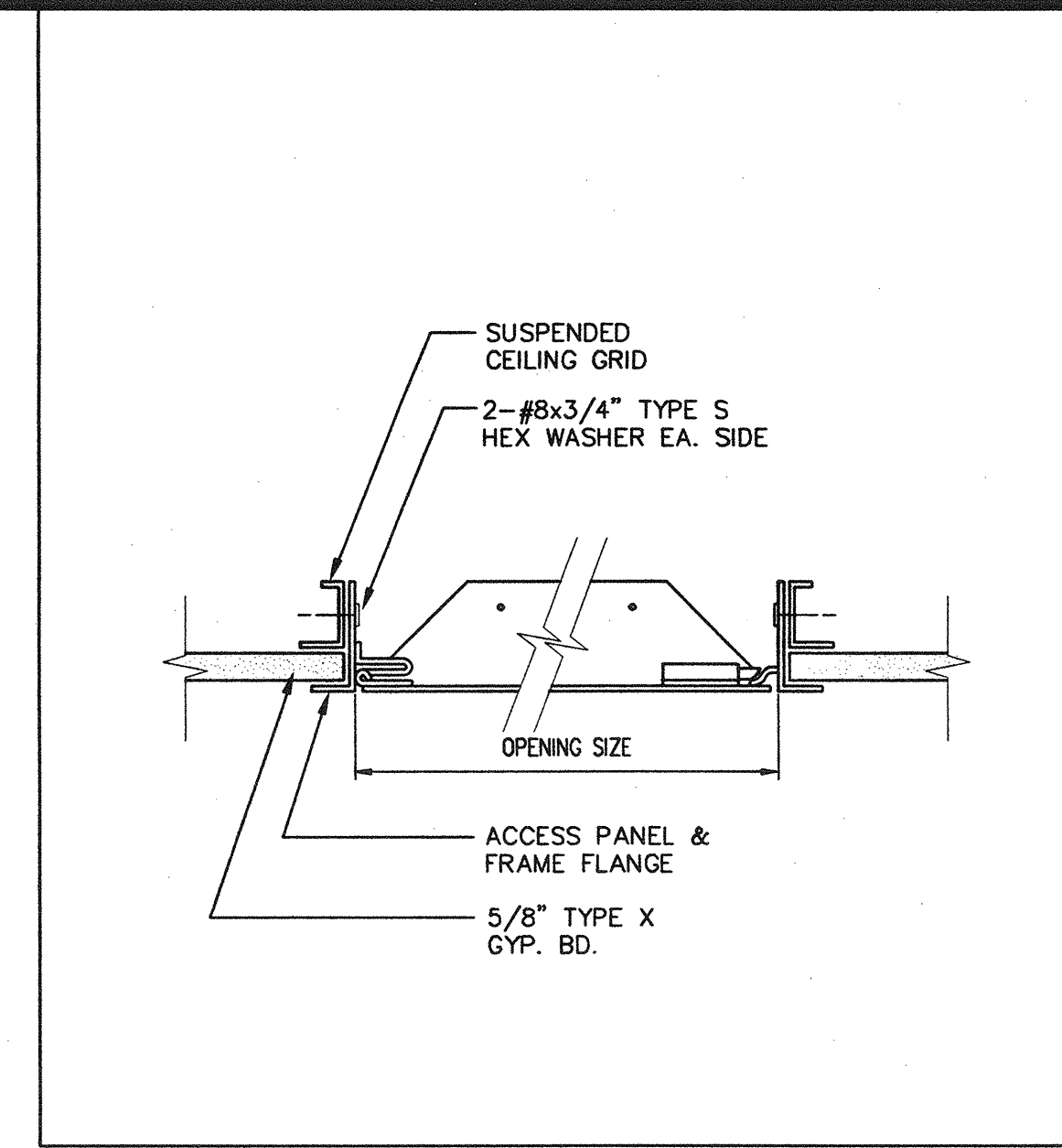
**2 FLOOR TRANSITION DETAIL**  
SCALE: 6" = 1'-0" DE-FL-9



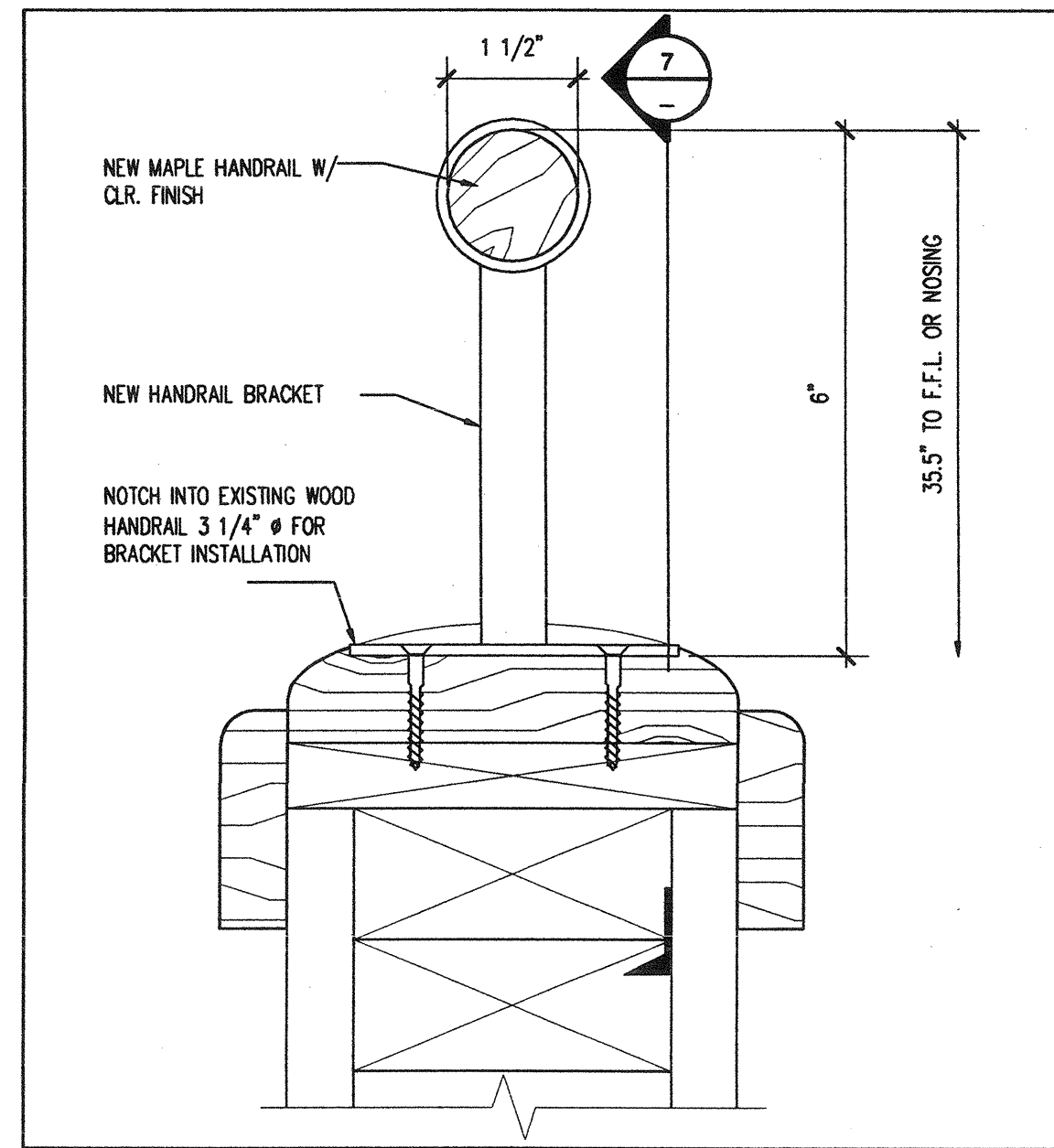
**3 TYPICAL FLOOR DRAIN DETAIL**  
SCALE: 6" = 1'-0" DE-FL-10



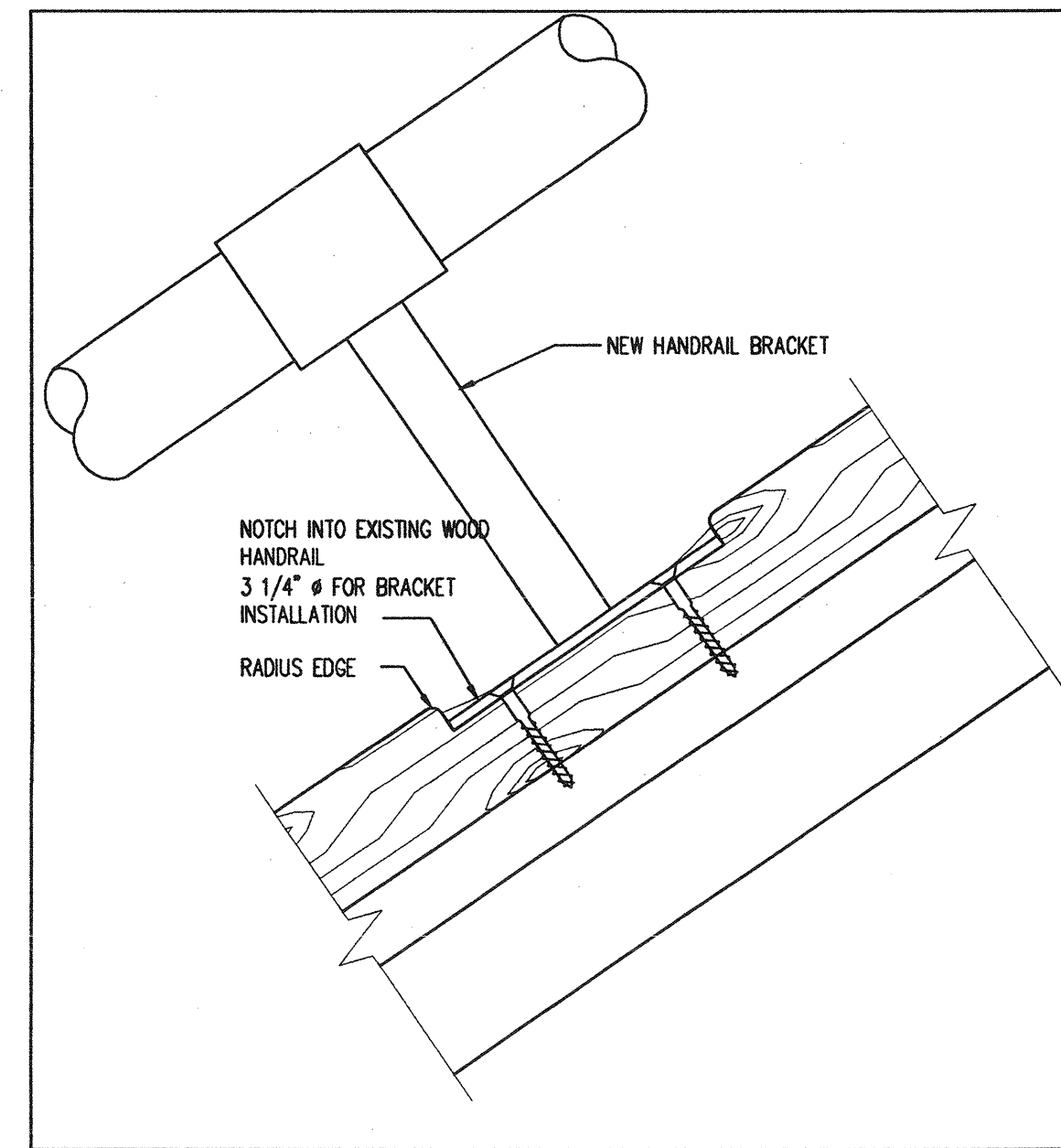
**4 FLOOR TRANSITION DETAIL**  
SCALE: 6" = 1'-0" DE-FL-8



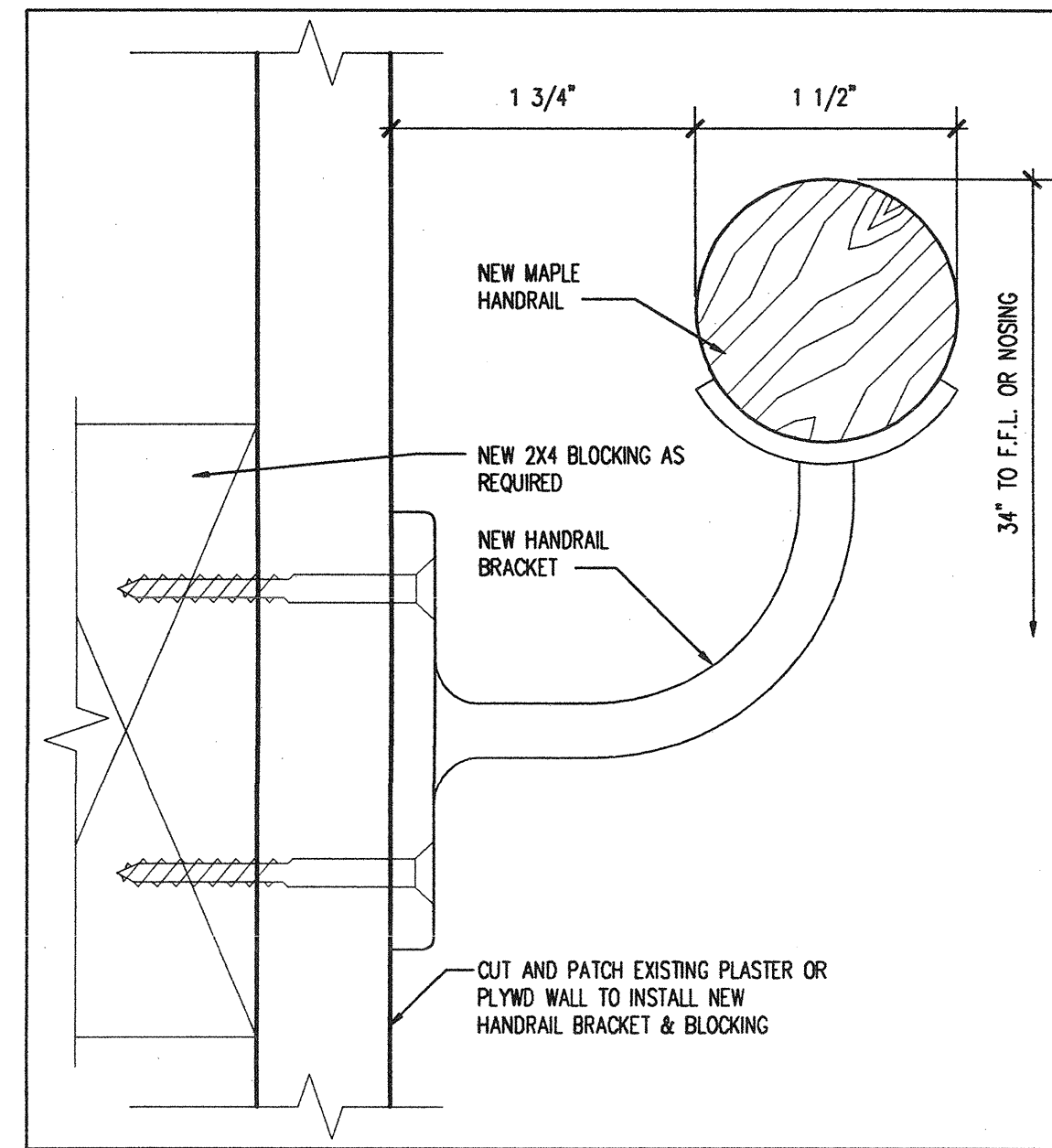
**5 ACCESS PANEL @ GWB CLG.**  
SCALE: 3" = 1'-0" DE-CL-05



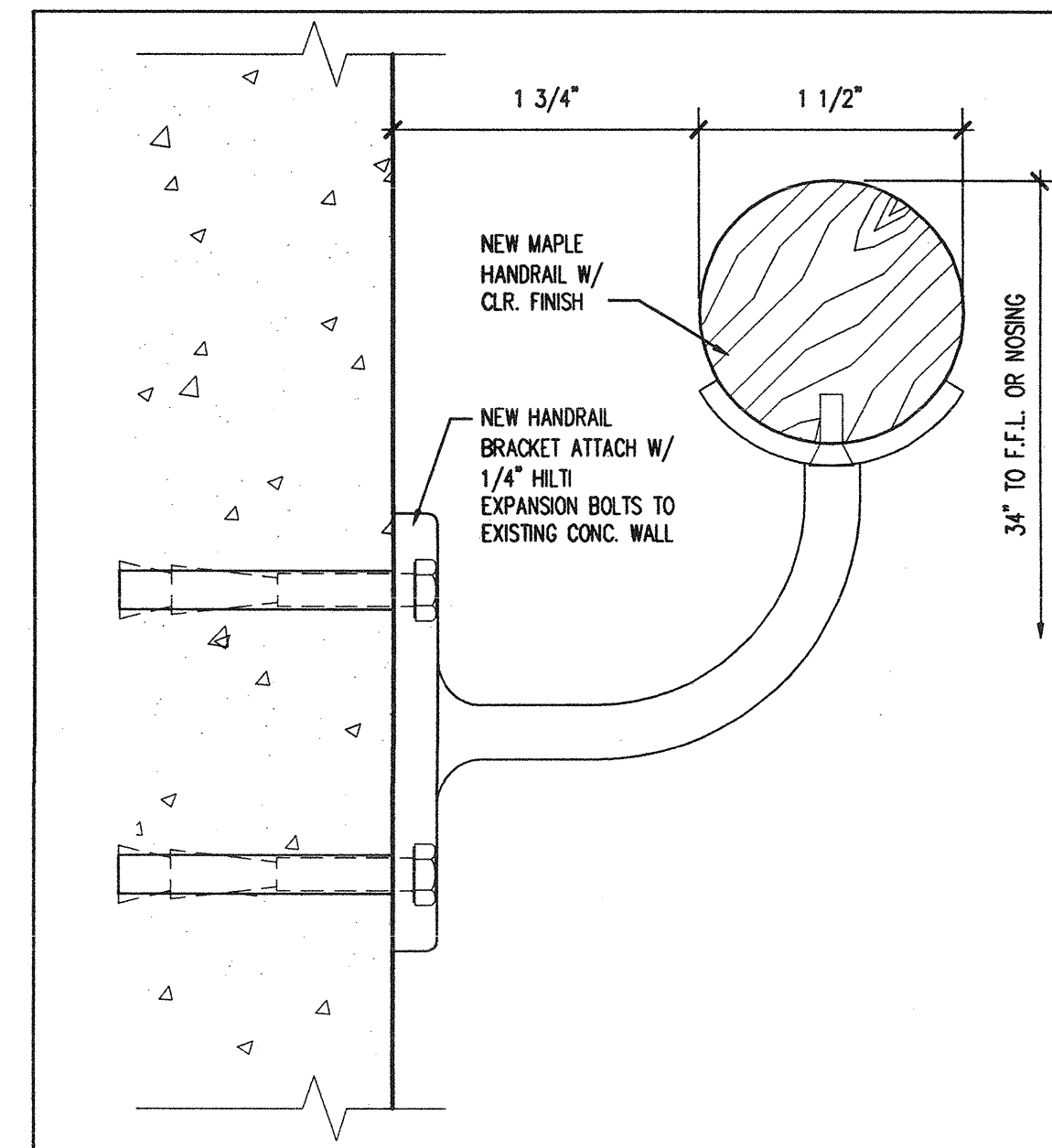
**6 HANDRAIL DETAIL**  
SCALE: 6" = 1'-0" DE-ST-01



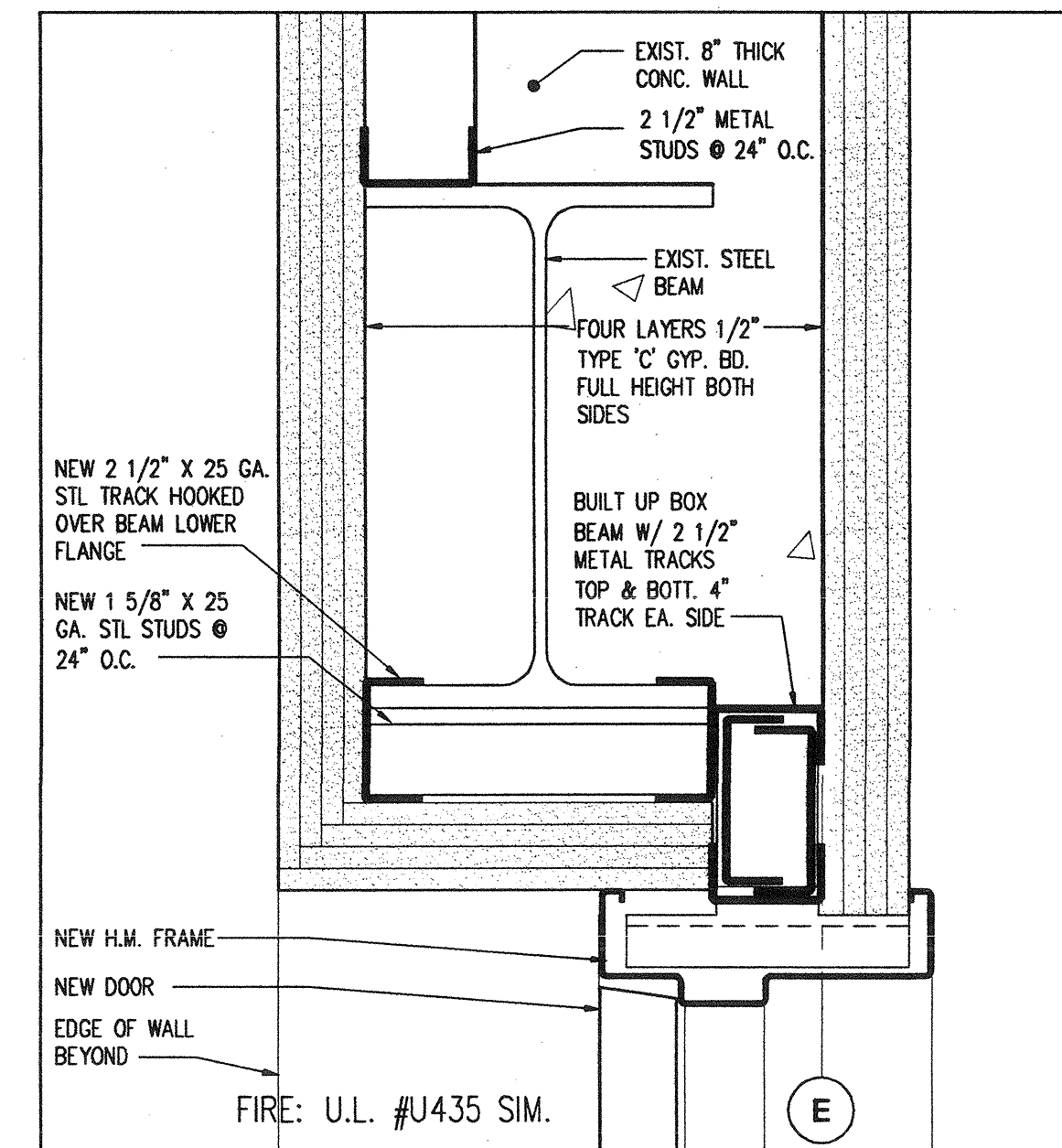
**7 HANDRAIL DETAIL**  
SCALE: 6" = 1'-0" DE-ST-04



**8 HANDRAIL DETAIL @ WALL**  
SCALE: 1" = 1'-0" DE-ST-02



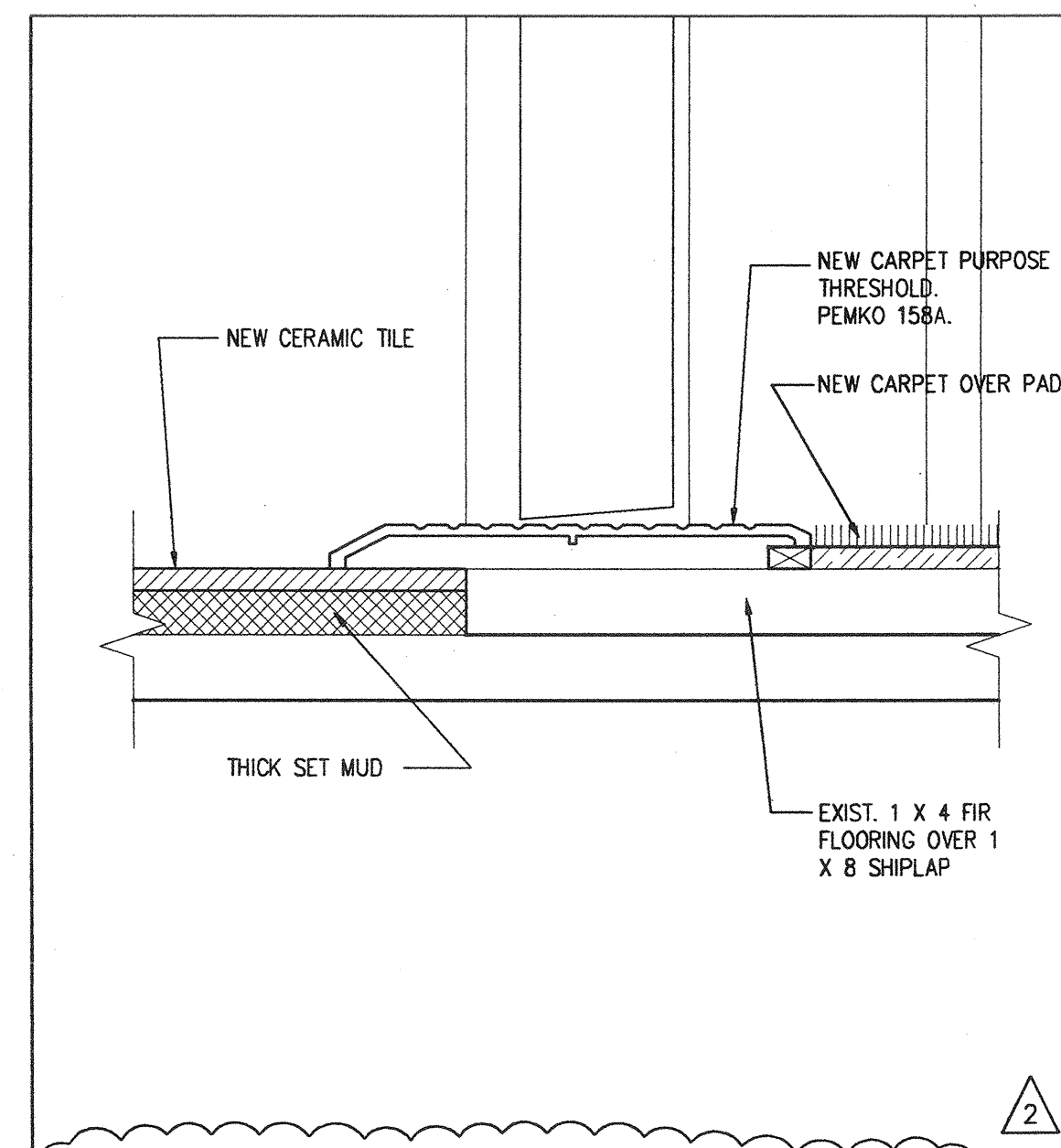
**9 HANDRAIL DTL. @ CONC. WALL**  
SCALE: 1" = 1'-0" DE-ST-03



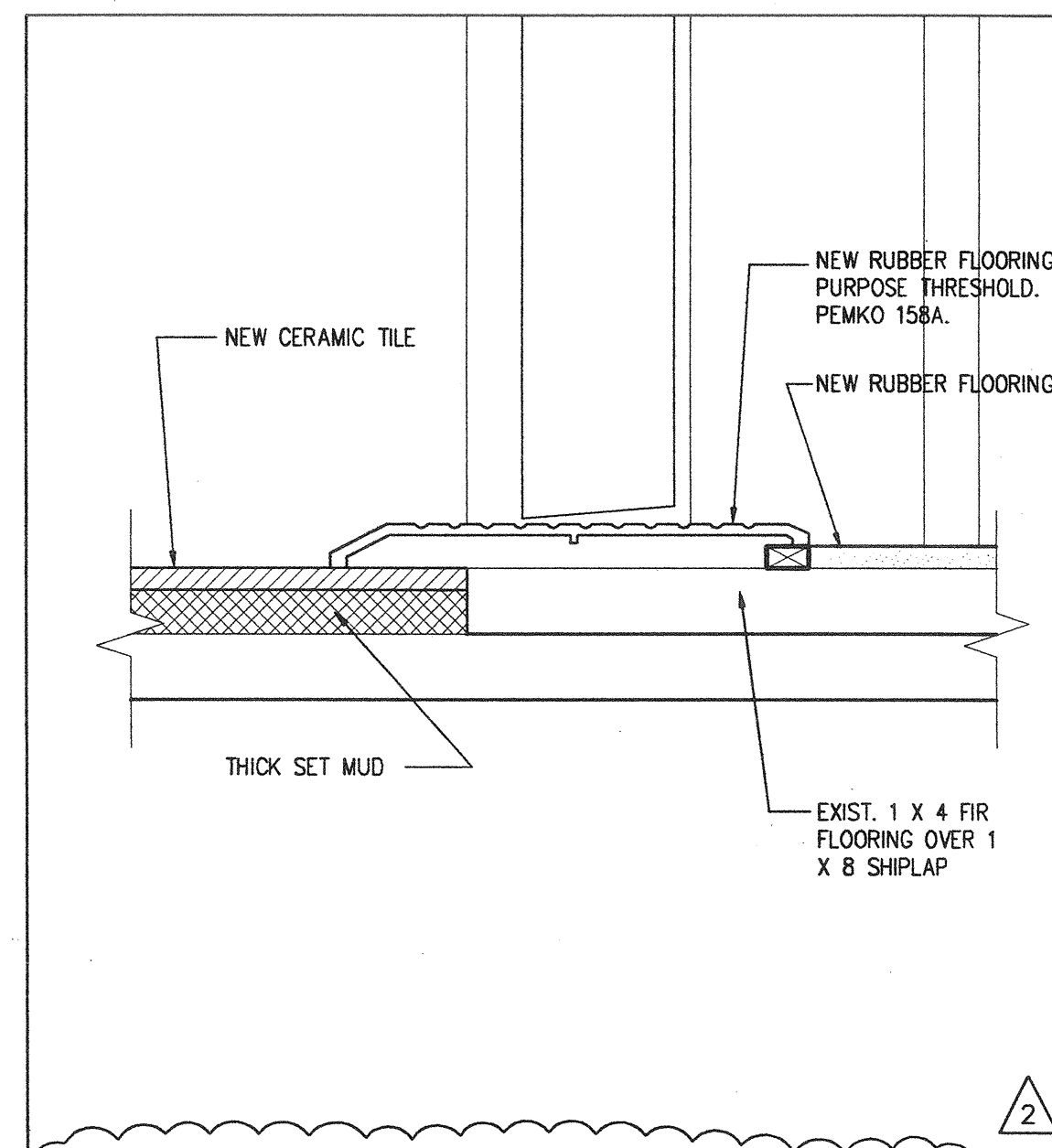
**10 4-HR SEPARATION**  
SCALE: 3" = 1'-0" DE-WT-18



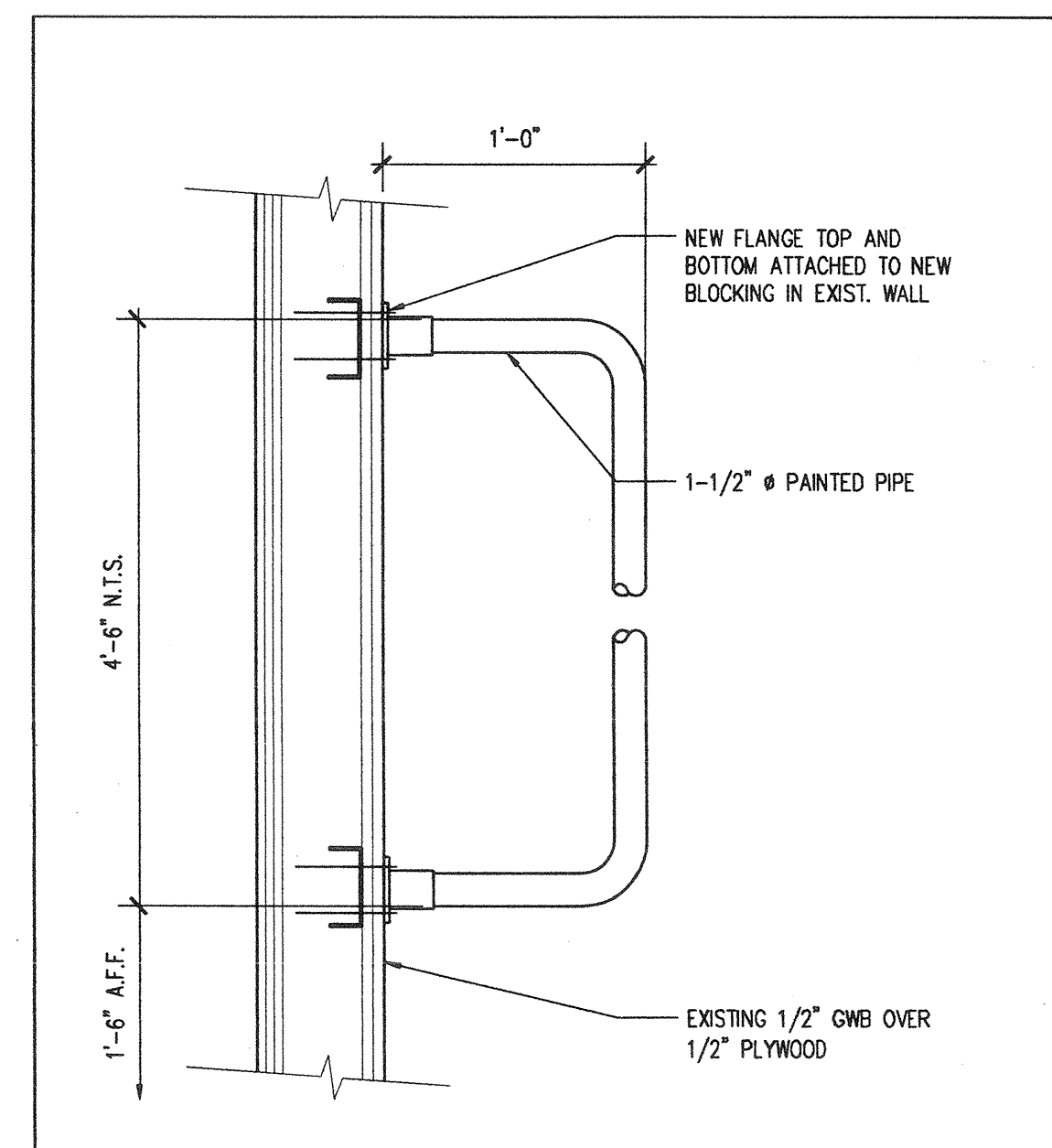
**18 FLOOR TRANSITION DETAIL**  
SCALE: 6" = 1'-0" DE-FL-13



**17 FLOOR TRANSITION DETAIL**  
SCALE: 6" = 1'-0" DE-FL-12



**16 RAIL @ DOOR**  
SCALE: 1 1/2" = 1'-0" DE-WL-16



**15 4-HR SEPARATION**  
SCALE: 3" = 1'-0" DE-WT-19

**A/J** ARAI/JACKSON  
Architects & Planners  
1601 East John - Seattle, WA 98112  
Tel: 206-323-8800 Fax: 206-323-8518

CONSTRUCTION DOCUMENTS  
BID SET

REGISTERED ARCHITECT  
STATE OF WASHINGTON

3		
2	OWNER REVISIONS	2 4/24/03
1	PERMIT CORRECTIONS	1 7/15/02
NO.	REVISION - AS BUILT	DATE

REVIEWED: \_\_\_\_\_ DATE \_\_\_\_\_  
PARK ENGINEER

All work done in accordance with the City of Seattle Standard Plans and Specifications in effect on the date shown above, and supplemented by Special Provisions.

SAND POINT  
MAGNUSON PARK  
COMMUNITY RECREATION CENTER  
BUILDING 47

INTERIOR DETAILS

DESIGNED	KS, MB	DATE	APR. 24, 2003
DRAWN	KS, MB, MO	DESIGN REVIEW	
CHECKED	GO, JA		
ORDINANCE NO.	119812 & 119987		
CONTRACT NO.	1616	SHEET	32 OF 76
SCALE	AS NOTED		

A704