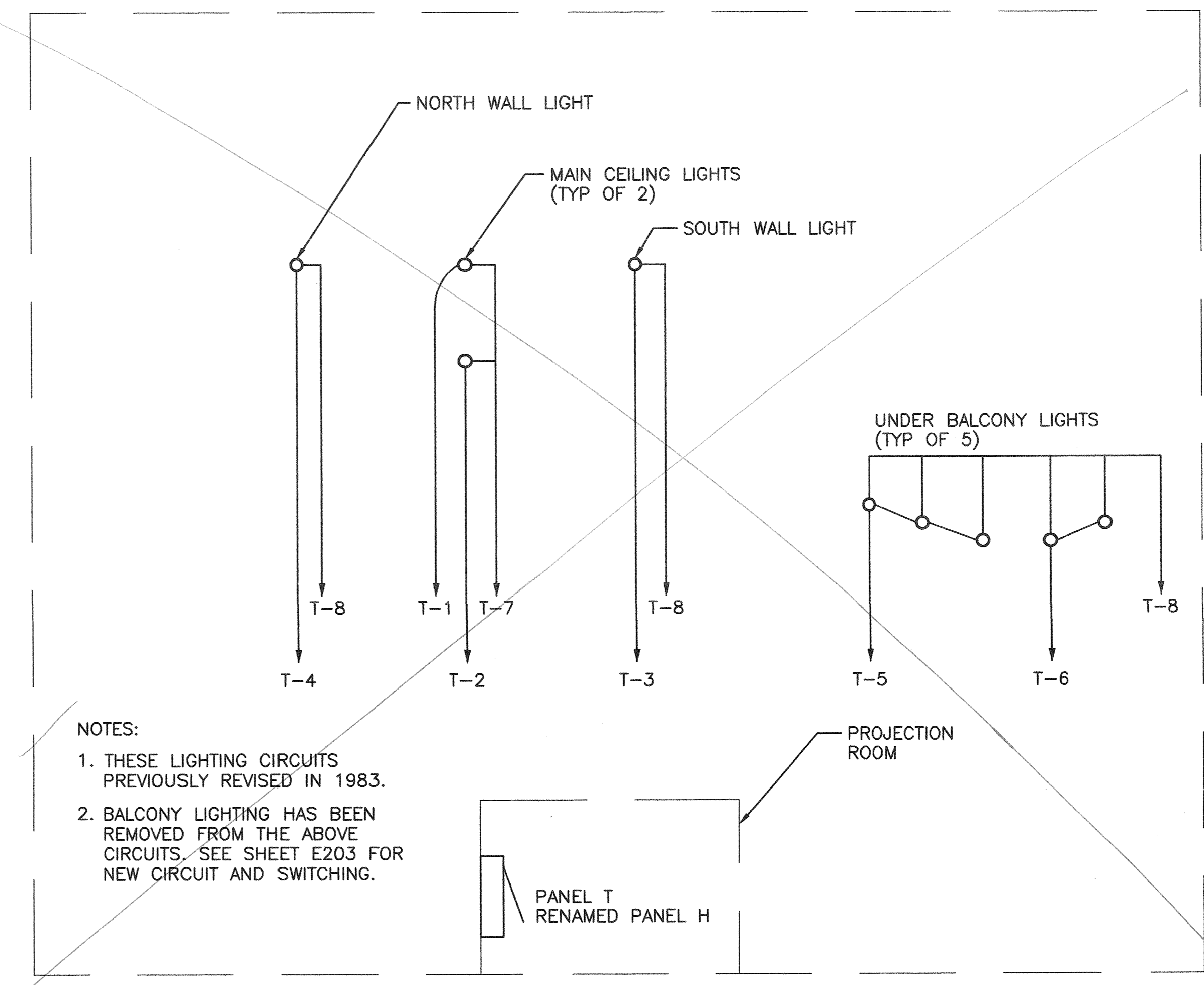


LOCATED SO. WALL FOYER #306

1 REVISED SWITCHING DIAGRAM
E402 SCALE: NTS EXISTING AUDITORIUM LIGHTING

SCONCES - HOTTED FROM PNL BKR
BALCONY

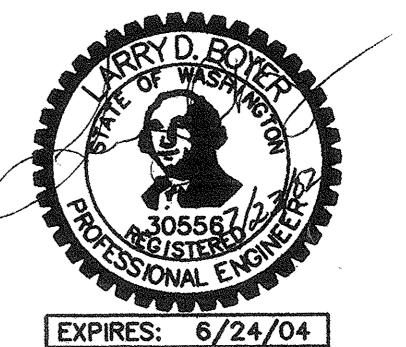


NOTES:
1. THESE LIGHTING CIRCUITS PREVIOUSLY REVISED IN 1983.
2. BALCONY LIGHTING HAS BEEN REMOVED FROM THE ABOVE CIRCUITS. SEE SHEET E203 FOR NEW CIRCUIT AND SWITCHING.

2 AUDITORIUM LIGHTING RISER DIAGRAM
E402 SCALE: NTS EXISTING AUDITORIUM LIGHTING



CONSTRUCTION DOCUMENTS
BID SET



3		
2	BID SET	12/11/02
1	PERMIT CORRECTIONS 1	7/15/02
NO.	REVISION - AS BUILT	DATE

REVIEWED: *J. Allan* 1/15/03
DATE
PARK ENGINEER

All work done in accordance with the City of Seattle Standard Plans and Specifications in effect on the date shown above, and supplemented by Special Provisions.



17928 BOTHELL EVERETT HWY SE, SUITE H
BOTHELL, WASHINGTON 98012
(425) 481-7735 FAX (425) 481-7692

CONTACT: FRANK STARR
JOB NUMBER: 023261

SAND POINT
MAGNUSON PARK
COMMUNITY RECREATION CENTER
BUILDING 47

ELECTRICAL
DIAGRAMS

DESIGNED	FHS	DATE	JULY 23, 2002
DRAWN	MDW	DESIGN	REVIEW
CHECKED	LDB		
ORDINANCE NO.	119812 & 119987		
CONTRACT NO.	1616	SHEET	75 OF 76
SCALE	NONE		