

Board of Parks & Recreation Commissioners Superintendent's Report

Christopher Williams, Sr. Deputy Superintendent/Chief of Staff
July 11, 2024



Seattle
Parks & Recreation

Healthy People, Thriving Environment, Vibrant Community

#SeattleShines



Department Update

- Greater & Greener!



TT Minor Play Area Build Day



Greater & Greener bicycle tour along Lake Washington Blvd



Downtown Parks Tour

Parks & Recreational Services: Parks and Environment



Movie Night at Cal Anderson Park



Wallingford Steps



Busker Jim Page

Parks & Recreational Services: Recreation

- Juneteenth celebration at Rainier Beach CC
- Indigenous Trees Teaching Workshop
- Youth employment program



Indigenous Tree Teaching Workshop

Parks & Recreational Services: Facilities

Jimi Hendrix Park Wave Wall Repair



Youth At Work (YAW) Interns honing their skills



Planning & Capital Development



Community Engagement opportunities for Be'er Sheva Phase Two Improvements



Lake City Flood Plain Park Development Planning

Policy & Finance

- Update to Park District Board
- Rise in illegal vending in parks
- Online picnic scheduling



Denny Blaine Park



Jefferson Park



Upcoming Events

- July 11 and other dates: Indigenous Presentations
- July 16 and other dates: Dancing til Dusk at Hing Hay Park!



Dancing til Dusk at Pier 62

Thank you!



Seattle
Parks & Recreation

Healthy People, Thriving Environment, Vibrant Community

Seattle Parks and Recreation Briefing on Athletic Fields

City Council Parks, Public Utilities and Technology Committee

July 10, 2024

Seattle Parks and Recreation



City of Seattle

Briefing Agenda

- Scheduling
- Asset management
 - Grass Fields
 - Synthetic Fields
- Turf Conversions
- Routine Maintenance



Context: Joint Use Agreement

Since the 1920s, the City of Seattle and Seattle Public Schools have operated under an agreement that allows for the joint use of each other's separately-owned fields and facilities, expanding all users' access to recreational space and prioritizing students and youth through a joint-scheduling process. Reviewed and updated every five years, the JUA covers:

- Scheduling of ***SPS Fields/Complexes, SPR Fields***, SPR Courts, SPR Pools, SPS School Facilities
- Coordination on capital projects

Context: Joint Use of Athletic Fields

- SPR manages athletic field permitting, including:
- Scheduling Reservations
 - 89 SPR sites: SPS has priority until 5:45 p.m.
 - 43 SPS sites: SPS has priority until 7 p.m.
 - Collecting Reservation Fees
 - Fees collected at SPS sites transferred to SPS
 - SPS reimburses SPR for administrative costs

2024 Fees	Synthetic Field	Grass Field
Youth	\$16/hour	\$10.50/hour
Adult/Private School	\$81/hour	\$60/hour



Athletic Field Scheduling: Field Demand

Fall

Football
Soccer
Slow-pitch
Ultimate

Winter

Soccer
Ultimate

Spring

Baseball
Lacrosse
Softball
Soccer
Track
Ultimate

Summer

Adult
Softball
Beach VB
Cricket
Soccer
Ultimate

- Synthetic Fields
 - Complexes: Lower Woodland, Magnuson, Genesee
 - Stand alone: Miller, Washington Park
- Grass Fields (spring/summer)
 - Lit fields in particular demand
 - Lower Woodland Cloverleaf, Green Lake, Dahl

Athletic Field Scheduling: Field Utilization

- Average % Playfield Utilization
 - Spring 2022 (March-May)
 - Weekdays between 4-9pm, including holidays
 - Seattle Parks, lighted, synthetic playfields

Monday	83%
Tuesday	90%
Wednesday	90%
Thursday	91%
Friday	85%

- Of the community user, primetime hours (4-10/11pm) booked on our fields, 98% of those hours are booked by historical users.
- Field utilization primarily youth
 - 78% on synthetic and 88% on grass.
- Field utilization has increased over the last decade
 - 27% increase in hours from 2013-2023
 - 2013: 114,510 hours on SPR playfields
 - 2023: 145,475 hours on SPR playfields



Athletic Field Scheduling: Primary Users

Organization Count		Historical Organizations Only	
2023		2023	
☐ Seattle Parks Facilities	309	☐ Seattle Parks Facilities	235
Community User Group	222	Community User Group	161
Seattle Parks / ARC	17	Seattle Parks / ARC	11
Seattle Public Schools	70	Seattle Public Schools	63
☐ Seattle Public Schools Facilities	183	☐ Seattle Public Schools Facilities	157
Community User Group	116	Community User Group	98
Seattle Parks / ARC	8	Seattle Parks / ARC	7
Seattle Public Schools	59	Seattle Public Schools	52
Total	365	Total	276

Count of distinct organizations for SPR, SPS, all playfields.

Historical Use - Organization also reserved playfields in each the previous 2 years

Primary Users By Field Type	
Baseball	Community youth little Leagues, high school programs (public & private)
Football	Community youth and high school programs
Lacrosse	Community youth, high school programs
Rugby	Community youth, adult programs
Soccer	Community youth , high school programs, adult leagues
Softball	Community youth little leagues and clubs, high school programs, adult softball
Ultimate Frisbee	Community youth and adult leagues

Observation: Larger (and older) organizations have most time; Smaller up and coming organizations are underserved by barriers to access field time

- Opportunity:** Turf conversions increase access
- Exploring allocation protocols to support smaller organizations / emergent uses

Athletic Field Scheduling: Top 10 User Groups

Organization Name	Total Hours (2012-2022)	% of Primary User Hours	# of Participants	Participant Demographic	% of Participants Underserved
Seattle Youth Soccer Assn	182,617	17.7%	12,200	Youth	Did not answer
Underdog Sports	47,585	4.6%	26,000	Adult	Did not answer
North Seattle Baseball Assn	47,435	4.6%	3,000	Adult	Did not answer
Rec Adult Team Soccer League	46,001	4.5%	5,000	Youth	Did not answer
West Seattle Soccer Club	42,149	4.1%	5,000	Youth	<15%
NE Seattle Little League	41,476	4.0%	700	Youth & Adult	Did not answer
DiscNW	35,931	3.5%	12,000	Youth & Adult	30-45%
Magnolia Little League	28,952	2.8%	800	Youth	30-45%
Queen Anne Little League	28,209	2.7%	500	Youth	<15%
North Central Little League	28,131	2.7%	770	Youth	Did not answer
TOTALS:	528,485	51.2%	Avg: 6,287		

% underserved = participants identifying in minority group (BIPOC, LGBTQ, low income, disability, etc.)

Athletic Field Scheduling: Weather Impacts and Field Closure Considerations

Least impacted

- Full synthetic fields are not impacted by rainy weather
- Hybrid synthetic/grass ballfields are rarely impacted by rainy weather (exception LW1 clay mound)
- Rectangle grass fields (soccer, football, ultimate) are rarely closed by SPR due to rain

Most Impacted

- Dirt infield/grass outfield ballfields are significantly impacted by rainy weather (baseball/softball unplayable in dirt infields)
- Capital improvement projects close fields for grass to synthetic conversions, lighting installations and/or repairs, synthetic turf replacement, natural turf restoration
- Improperly used fields - Off-leash dogs, etc.



Athletic Field Scheduling: Field Use Agreements

Location	School	Term	Arrangement - Benefits to Public
Montlake (NE District)	Seattle Prep	12 years (2022-2034)	Full funding (\$850,000) of synthetic turf project. Provides programming and services in collaboration with Montlake CC to the local community.
South Park (SW District)	Seattle Academy of Arts and Sciences	25 years (2021-2046)	Full funding (\$4 million) of synthetic turf and field lighting project. Provides programming and services in collaboration with South Park CC to the local community.
Interbay Stadium (CW District)	Seattle Pacific University	25 years (2004-2029)	Full funding (\$3.4 million) of soccer stadium, locker rooms, concessions, restrooms, showers, bleachers, press box, and \$100,000 to improve ancillary ballfields.



Athletic Field Scheduling: Equity & Field Access

Drop-In Field Use
Program (10 fields)

Field Evaluation
Study (ongoing)

Differential rates –
youth/public vs.
adult/private

Public Benefits
negotiated in
Montlake and South
Park Agreements

New User Group
Entry Point (field
conversion policy)

Fee Waivers –
SPS/SPR fields

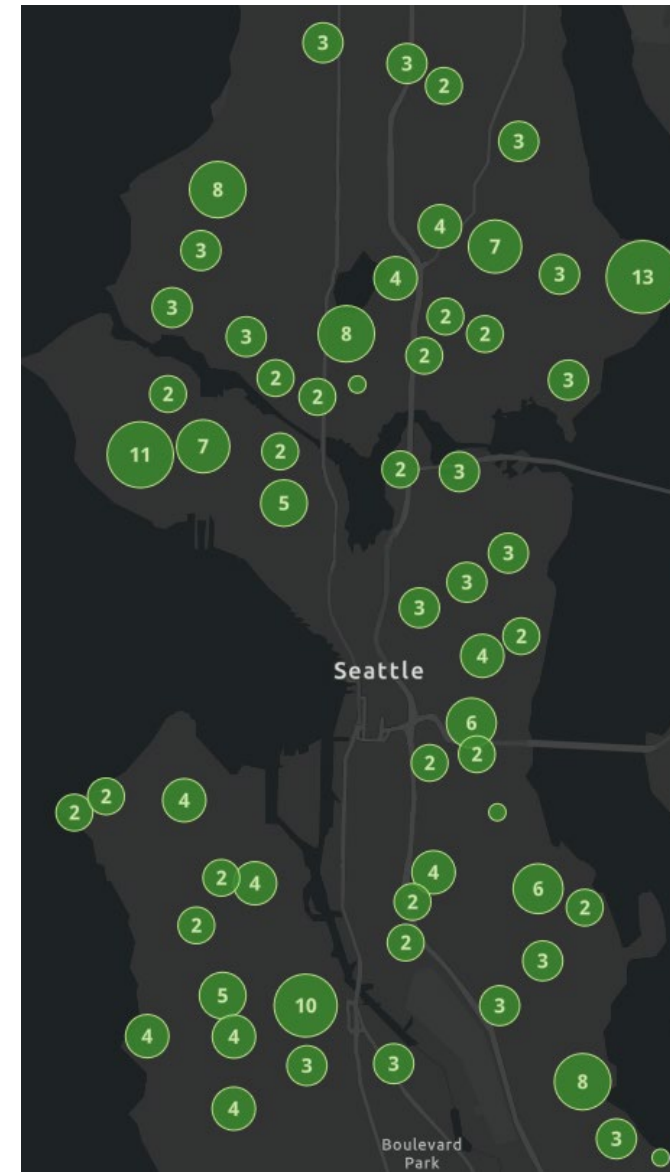
Online Reservations
– Volleyball &
Basketball
(upcoming)

Athletic Field Scheduling: All SPR Fields

Northwest Lit Unlit		
BSB	3	2
SFB	9	10
FB	1	1
SOC/ULT	5	7
Totals	18	20

Central West Lit Unlit		
BSB	2	0
SFB	5	7
FB	1	0
SOC/ULT	4	7
Totals	12	14

Southwest Lit Unlit		
BSB	2	2
SFB	3	21
FB	2	1
SOC/ULT	4	10
Totals	11	34



Northeast Lit Unlit		
BSB	0	4
SFB	2	16
FB	1	0
SOC/ULT	5	11
Totals	8	31

Central East Lit Unlit		
BSB	2	2
SFB	7	4
FB	1	2
SOC/ULT	4	7
Totals	14	15

Southeast Lit Unlit		
BSB	3	0
SFB	7	12
FB	3	0
SOC/ULT	6	8
Totals	19	20

Athletic Field Scheduling: Magnuson Park



Athletic Field Scheduling: West Magnolia North

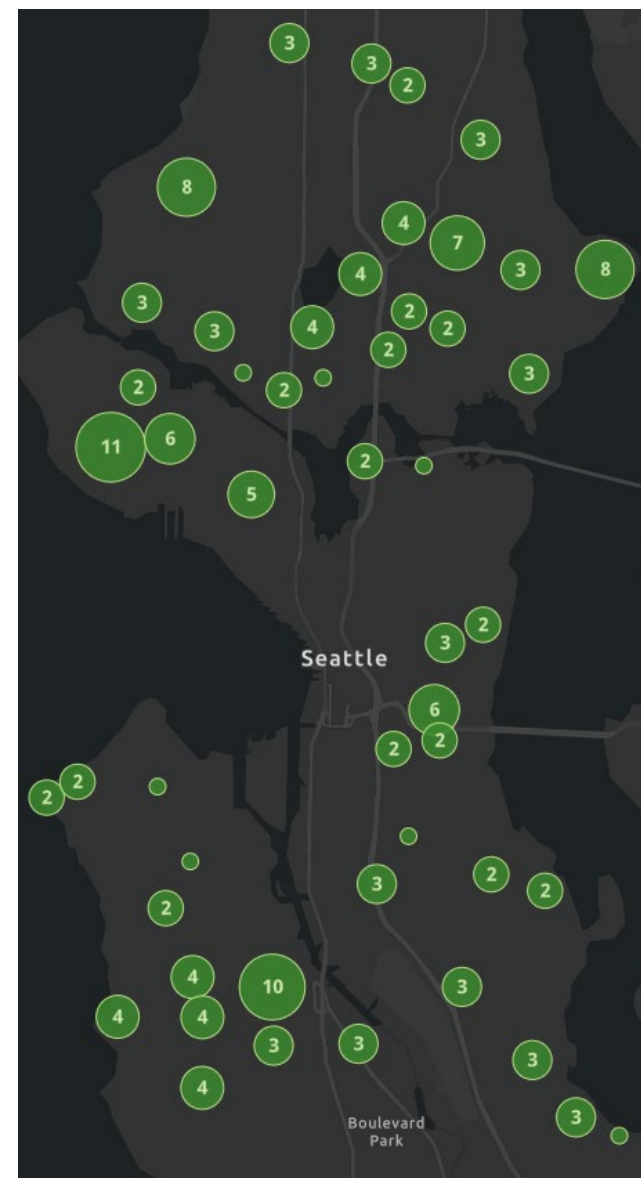


Athletic Field Scheduling: Grass Fields

Northwest	Lit	Unlit
BSB	1	2
SFB	7	10
FB	0	1
SOC/ULT	2	7
Totals	10	20

Central West	Lit	Unlit
BSB	2	0
SFB	5	7
FB	1	0
SOC/ULT	3	6
Totals	11	13

Southwest	Lit	Unlit
BSB	0	2
SFB	0	21
FB	1	1
SOC/ULT	0	10
Totals	1	34



Northeast	Lit	Unlit
BSB	0	3
SFB	1	16
FB	0	0
SOC/ULT	2	11
Totals	3	30

Central East	Lit	Unlit
BSB	0	2
SFB	2	4
FB	1	1
SOC/ULT	1	6
Totals	4	13

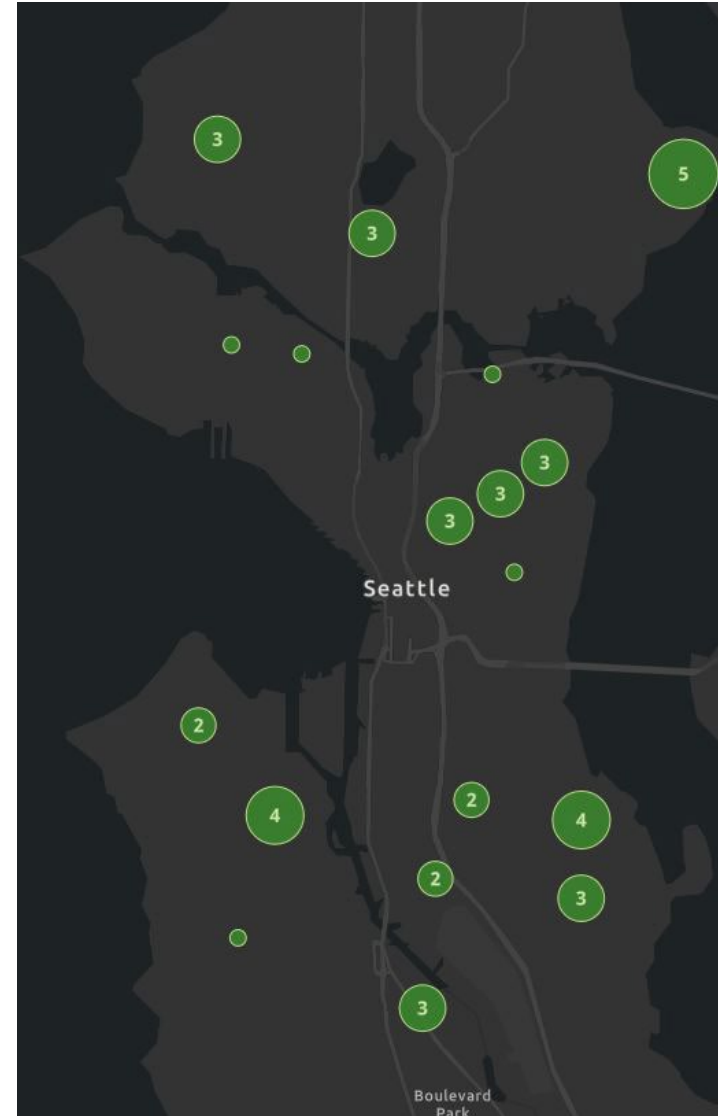
Southeast	Lit	Unlit
BSB	0	0
SFB	1	12
FB	1	0
SOC/ULT	1	8
Totals	3	20

Athletic Field Scheduling: Synthetic Fields

Northwest Lit Unlit		
BSB	2	0
SFB	2	0
FB	1	0
SOC/ULT	3	0
Totals	8	0

Central West Lit Unlit		
BSB	0	0
SFB	0	0
FB	0	0
SOC/ULT	1	1
Totals	1	1

Southwest Lit Unlit		
BSB	2	0
SFB	3	0
FB	1	0
SOC/ULT	4	0
Totals	10	0

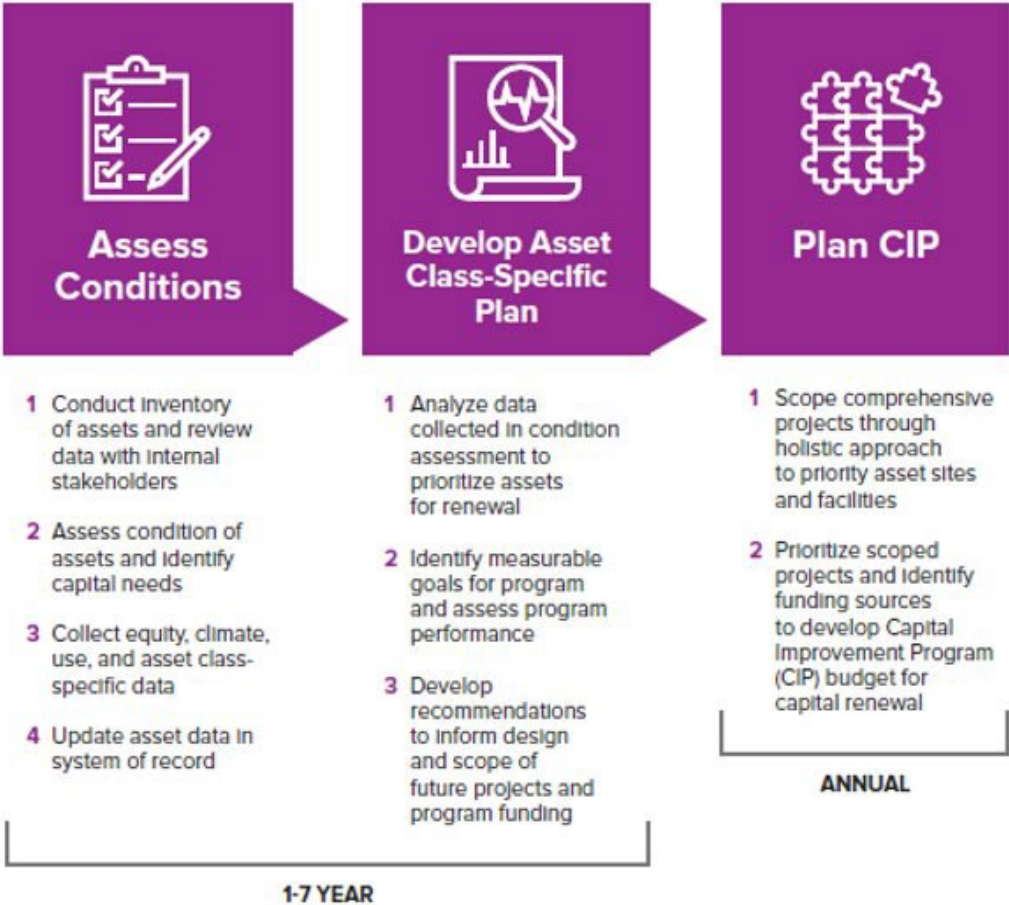
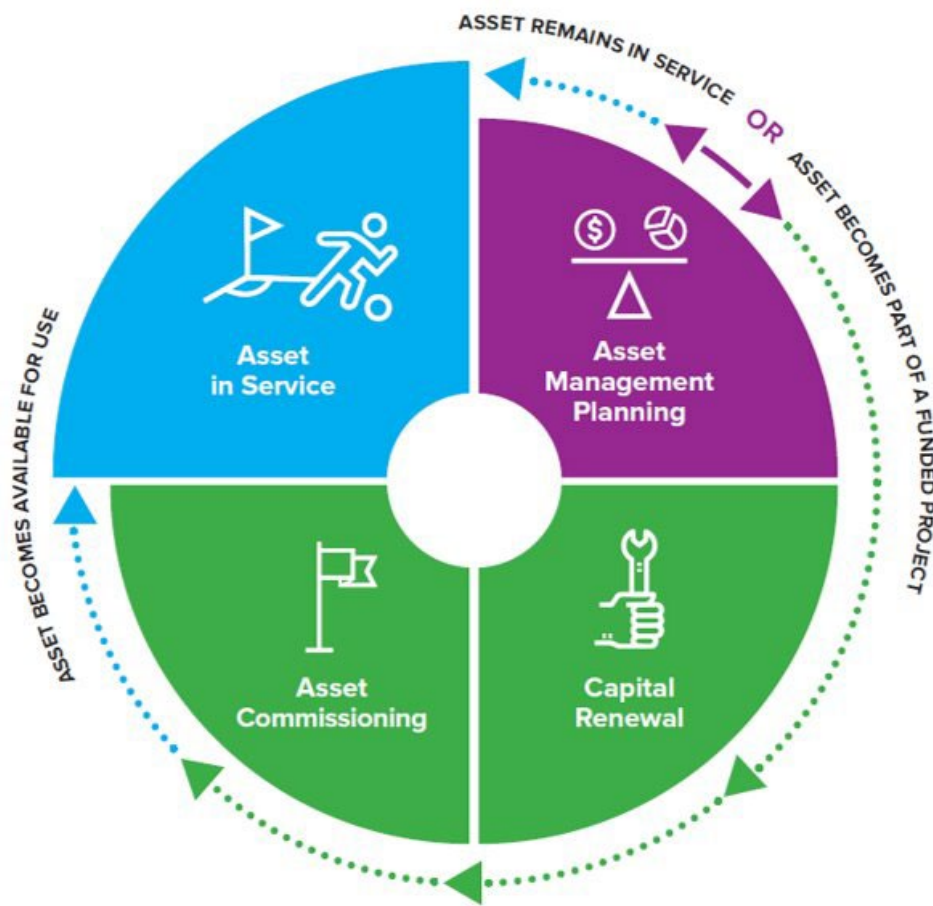


Northeast Lit Unlit		
BSB	0	1
SFB	1	0
FB	1	0
SOC/ULT	3	0
Totals	5	1

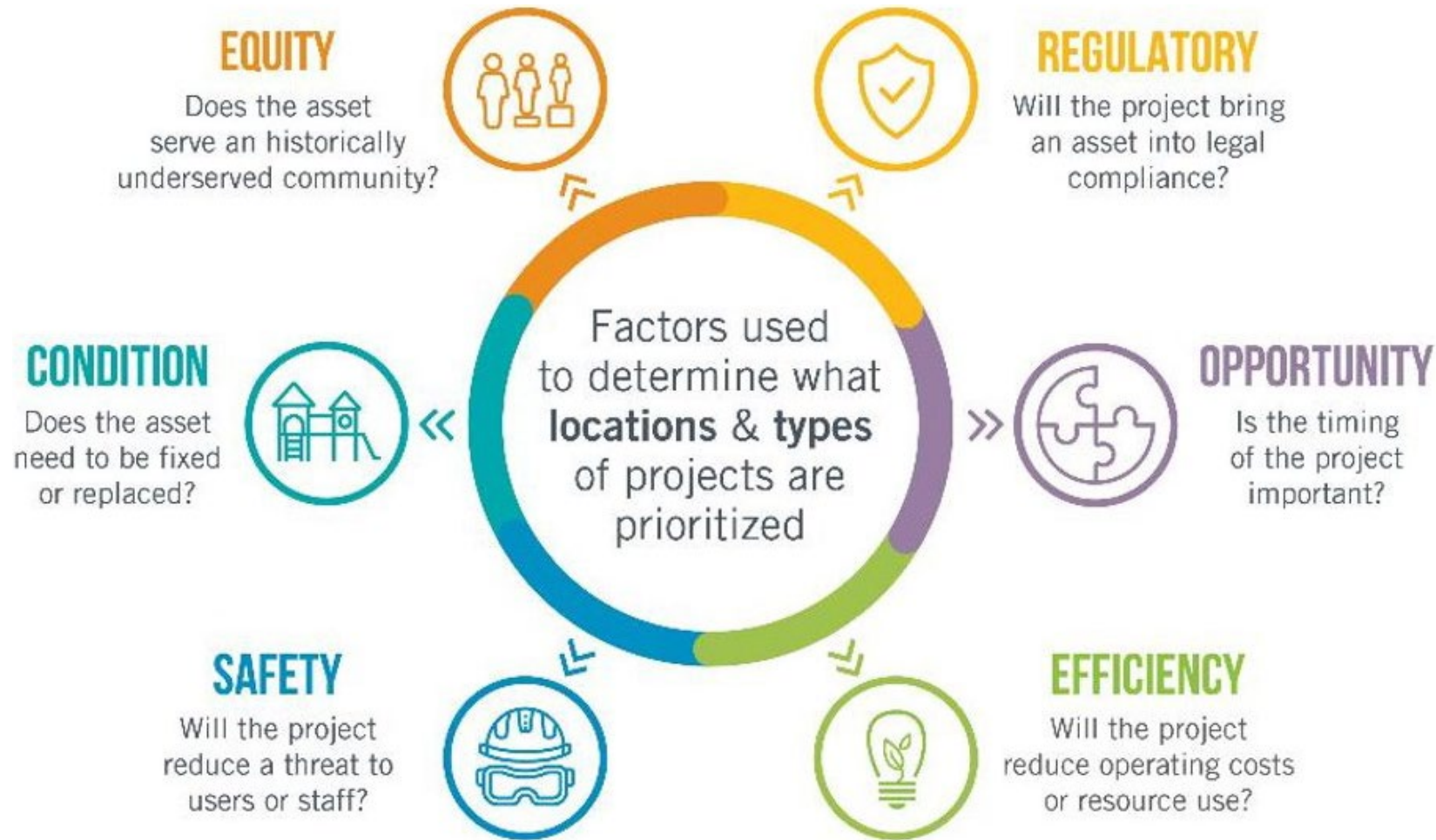
Central East Lit Unlit		
BSB	2	0
SFB	5	0
FB	0	1
SOC/ULT	3	1
Totals	10	2

Southeast Lit Unlit		
BSB	3	0
SFB	6	0
FB	2	0
SOC/ULT	5	0
Totals	16	0

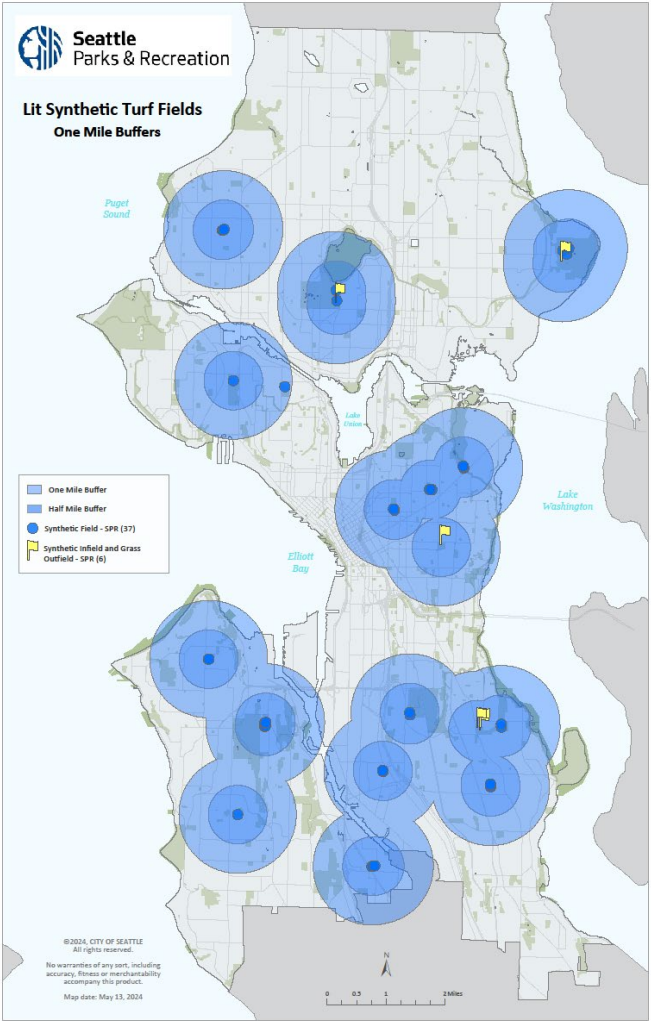
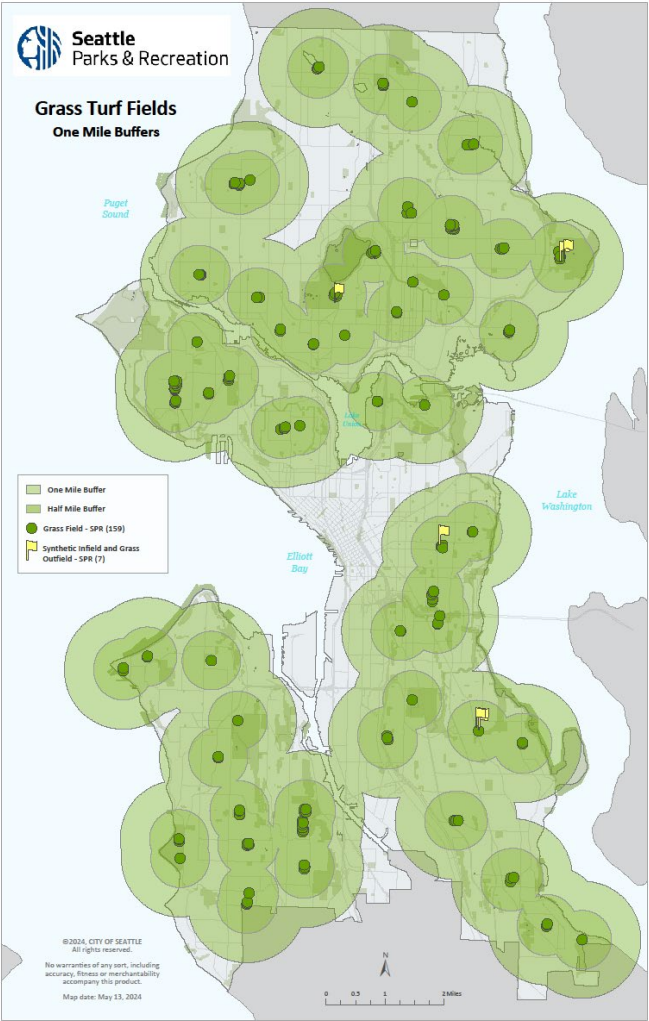
Asset Management: Overview of Planning Process



Asset Management: Overview of Planning Criteria



Asset Management: Current Athletic Field Inventory



Asset Management: Grass Field Renovation Program

Recently Completed:

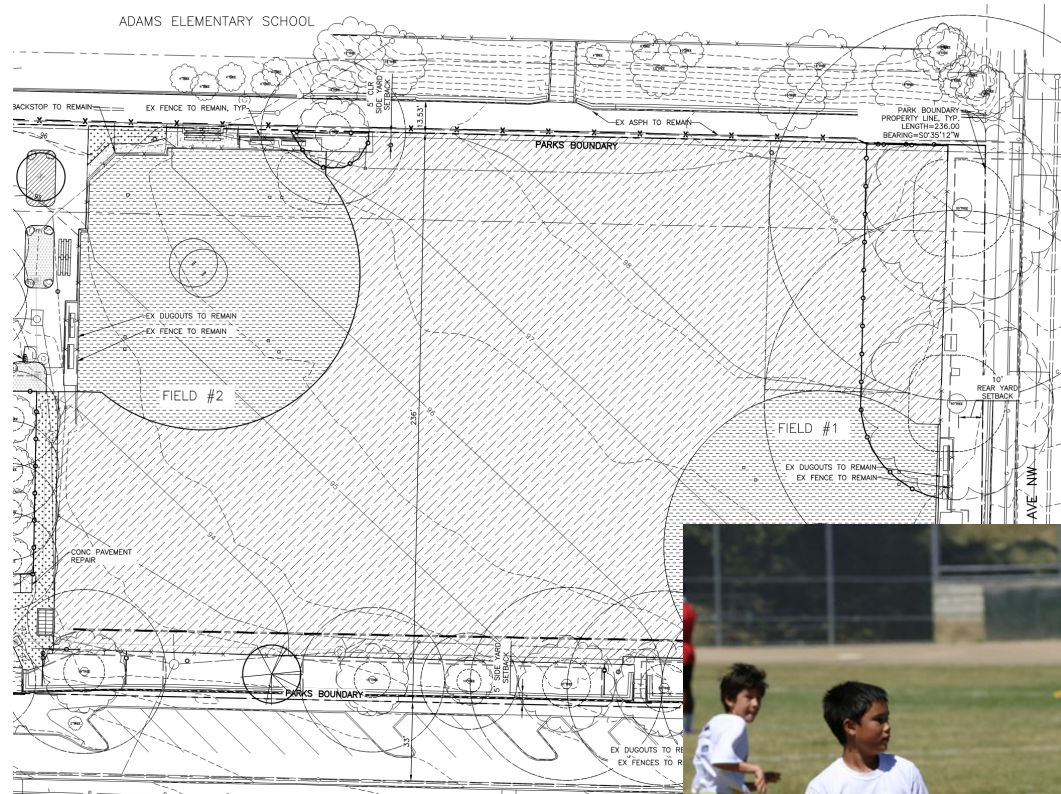
- Lakeridge Playground

Current Projects in Design:

- Maple Wood Playfield
- Hutchinson Playground
- Smith Cove Park
- Ballard Playground

Future Renovation Priorities:

- Interbay Playfield
- Rainier Beach Playfield
- Roxhill Park
- Northacres



2018-2024 Spending (Actuals): \$1,800,000

2024-2029 Budget (Planned): \$10,000,000 (supported mostly by MPD)

Asset Management: Synthetic Turf Renovation Cycle

Project	District	2018	2019	2020	2021	2022	2023	2024	2025	2026	2027	2028	2029	2030	2031	2032	2033	2034	2035
Loyal Heights PF Synthetic Turf Replacement	NW																		
Mickey Merriam Field 6 at Magnuson Synth Turf Replacement	NE																		
Lower Woodland Park PF #2 Synthetic Turf Replacement	NW																		
Queen Anne Bowl PF Synthetic Turf Replacement	CW																		
Mickey Merriam Field 7 at Magnuson Synth Turf Replacement	NE																		
Lower Woodland Park PF #7 Synthetic Turf Replacement	NW																		
Miller Playfield Synthetic Turf Replacement	CE																		
Mickey Merriam Field 9 at Magnuson Synth Turf Replacement	NE																		
Georgetown PF Synthetic Turf Replacement	SE																		
Hiawatha Playfield Synthetic Turf Resurfacing	SW																		
Mickey Merriam Field 5 at Magnuson Synth Turf Replacement (Rugby)	NE																		
Washington Park PF Synthetic Turf Replacement	CE																		
Mickey Merriam Field 8 at Magnuson Synth Turf Replacement	NE																		
Garfield PF Synthetic Turf Replacement	CE																		
Delridge PF Synthetic Turf Replacement (counts as 2 fields)	SW																		
Jefferson Park PF Synthetic Turf Resurfacing	SE																		
Montlake PF Synthetic Turf Replacement	CE																		
Genesee PF #2 (lower) Synthetic Turf Replacement	SE																		
Walt Hundley PF Synthetic Turf Replacement	SW																		
Genesee PF #1 (upper) Synthetic Turf Replacement	SE																		
Lower Woodland PF #1 Synthetic Turf Replacement	NW																		
Interbay Stadium Synthetic Turf Replacement	CW																		
Bobby Morris Synthetic Turf Replacement	CE																		
Cleveland Playfield Synthetic Turf Conversion/Replacement	SE																		
Brighton Playfield Synthetic Turf Replacement	SE																		
Ballard Playground (not yet converted - only infields)	NW																		
South Park Playfield (not yet converted)	SW																		
Soundview Playfield Synthetic Turf Replacement (not yet converted)	NW																		
W. Queen Anne Playfield South (not yet converted)	CW																		
Magnuson Park Field 12 (not yet converted)	NE																		
W. Magnolia Playfield South (not yet converted)	CW																		

Asset Management: Synthetic Turf Renovation Program

Recently Completed:

- Delridge PF
- Hiawatha PF
- Jefferson Park PF
- Montlake PF
- Mickey Merriam (Magnuson) Field 5

Current Projects in Planning and Design:

- Mickey Merriam (Magnuson) Field 8
- Garfield PF
- Genesee PF #1 and #2
- Lower Woodland PF #1
- Walt Hundley PF

Future Projects:

- Interbay Stadium
- Bobby Morris (Cal Anderson) PF



Synthetic Turf Conversions

Generally funded by REET (some grants and donations)

Recent Completions:

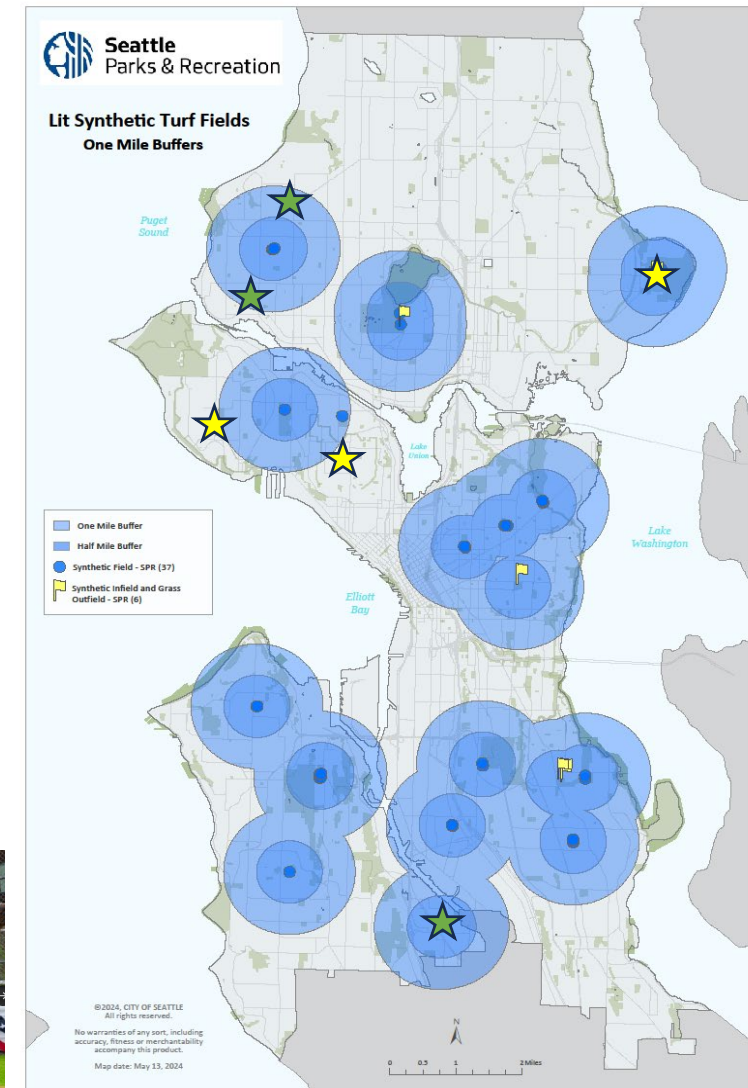
- Brighton
- Rainier PF (infield w/ Mariner's donation)

Current Projects:

- ★ South Park Playground
- ★ Soundview Playfield
- ★ Ballard Playground (infields)

Future Projects:

- ★ W. Queen Anne Playfield
- ★ Mickey Merriam (Magnuson) Field #12
- ★ W. Magnolia Playfield South
 - To be identified: Lincoln HS football practice site



Investments that Reduce Rainouts / Expand Playing Season

Grass Field Renovations improve playability and drainage

- Recent: \$1.8M
- Future: \$10M

Grass Field Renovations / Infield Conversions

- Recent: \$580K
- Future: \$1.7M

Turf Replacement Projects support continued year-round play

- Recent: \$19.5M
- Future: \$15.0M

Turf Conversion projects reduce rainouts and expands to year-round play:

- Recent: \$9.8M (~2,916 hours)
- Future: \$28.2M (~6,000 hours)

Field Type/Surface	# Fields with Rainouts	2022 Rainouts	2023 Rainouts
90-foot ballfield: Grass	9 of 22	109	116
90-foot ballfield: Synthetic	2 of 10	13	0
60-foot ballfield: Grass	20 of 103	217	223
60-foot ballfield: Synthetic	3 of 17	3	0

*90-foot ballfields are generally used for HS baseball
60-foot ballfields are generally used for HS softball/little leagues

Recent reflects spend 2018 - May 2024
Future reflects the adopted CIP (2024-2029)

Routine / Preventative Maintenance: Overview

- SPR maintains natural and synthetic surface athletic fields including fields that are hybrid (natural infield, synthetic outfield).
- Natural and synthetic surfaces require different methods of maintenance and types of equipment.
- All fields require routine maintenance to keep the field and surrounding area safe for players and spectators including; trash collection, hard surface cleaning, graffiti removal, tree & shrub care, etc.
- All fields require repairs/replacements to plumbing, electrical, carpentry and other fixtures to keep facilities safe and functional.
- 2023 labor hours: 5,050 (general maintenance & repairs)



Routine / Preventative Maintenance: Natural

Natural surface Infield Management

SPR provides 125 natural surface infields

- Daily: prep fields with scheduled games, tasks including; remove or add water depending on conditions, groom infield, set bases at appropriate distance for user group, line fields for school play.
- Weekly: Stock field boxes for volunteers / user groups, sweep/blow dugouts clean
- Monthly: Remove grass/weeds growing in infield-wing fences & arc lines.
- Seasonal (spring): tilling soil, adding material, grading
- 2023 labor hours: 6,802 (game prep)

Natural Turf Maintenance

SPR maintains 141 acres of grass athletic fields

- Daily: litter pick up
- Weekly: mowing, line painting
- Bi-annual: Aerate, top-dress, seed, fertilize
- Seasonal: Irrigation- activation, inspect, repair, monitor, winterization.
- 2023 labor hours: 11,212



Routine / Preventative Maintenance: Synthetic

Synthetic Turf Maintenance

SPR maintains ~50 acres of synthetic turf ballfields

- Daily: litter pick up and inspect to ensure field and surrounding area is safe for play.
- Weekly: blow surface, remove organic debris. Report/address hazards or warranty issues such as tears or splitting seams.
- Monthly: brushing, top-dressing high wear areas such as home plate, goal mouths.
- Bi-annual: remove debris below surface in fibers, redistribute infill material with Sportschamp
- 2023 labor hours: 2,078



Questions?

