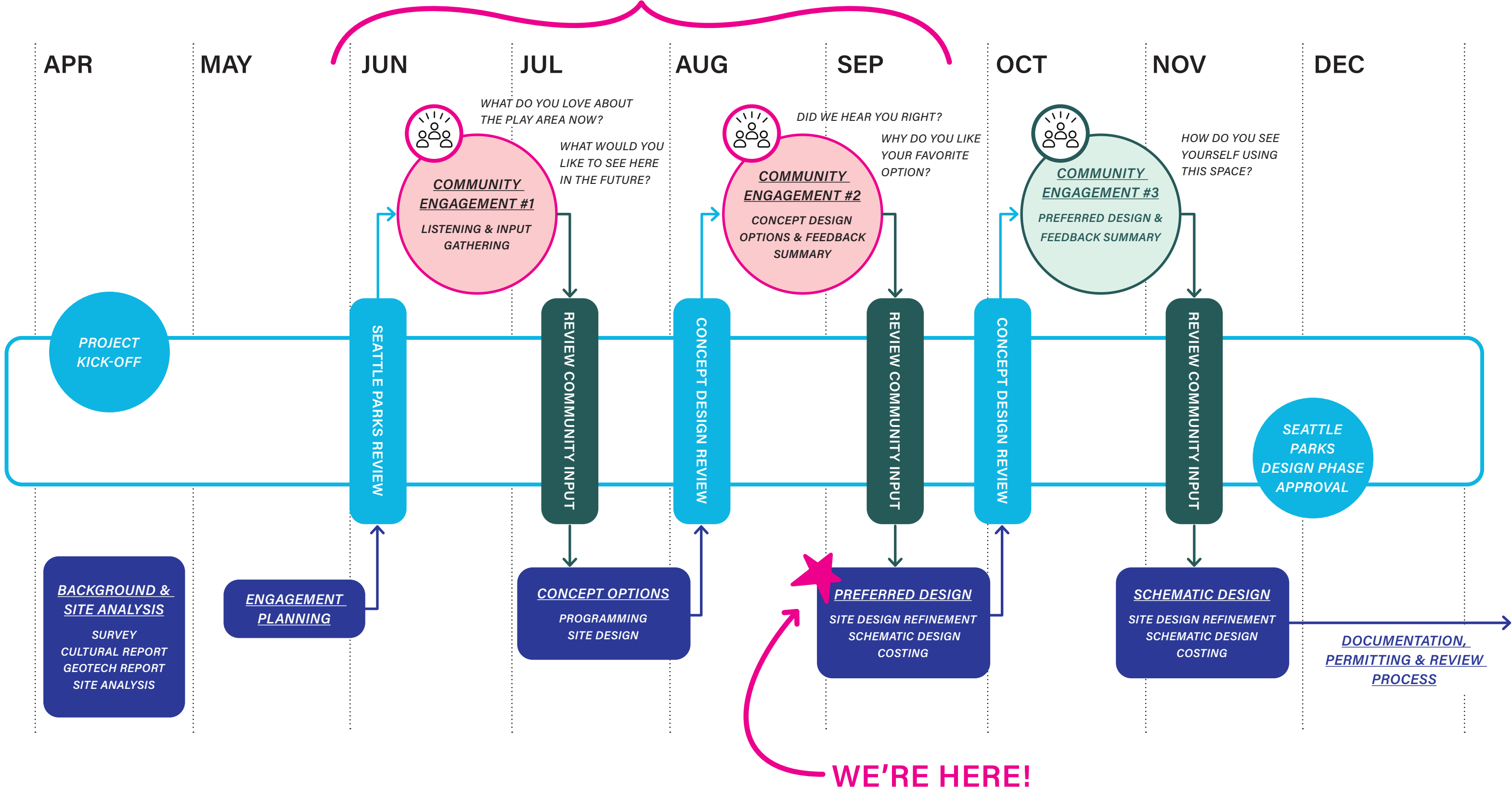


SEP 13 2023

# RAINIER COMMUNITY CENTER PLAY AREA



COMPLETE



# ROUND 1 ENGAGEMENT EVENTS

We came to 3 community events to talk with people about the play area. Through surveys, post-it notes, and conversations, we learned about how people currently use the play area and what they might like to see there in the future.

PLAY AREA | 6/24



50+ PEOPLE ENGAGED

FARMER'S MARKET | 6/28

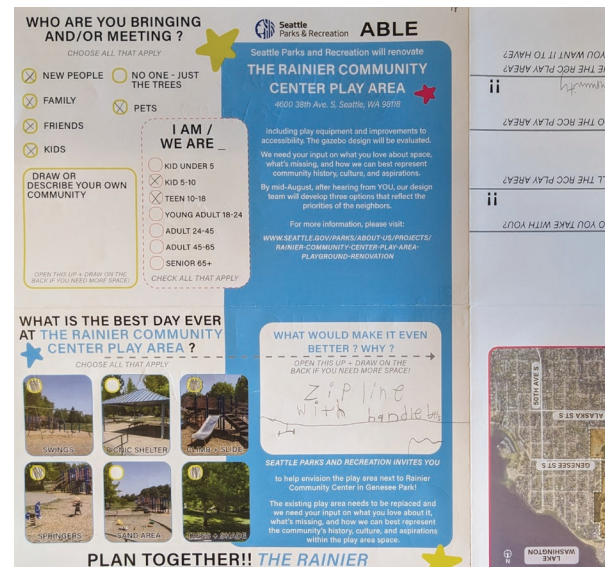
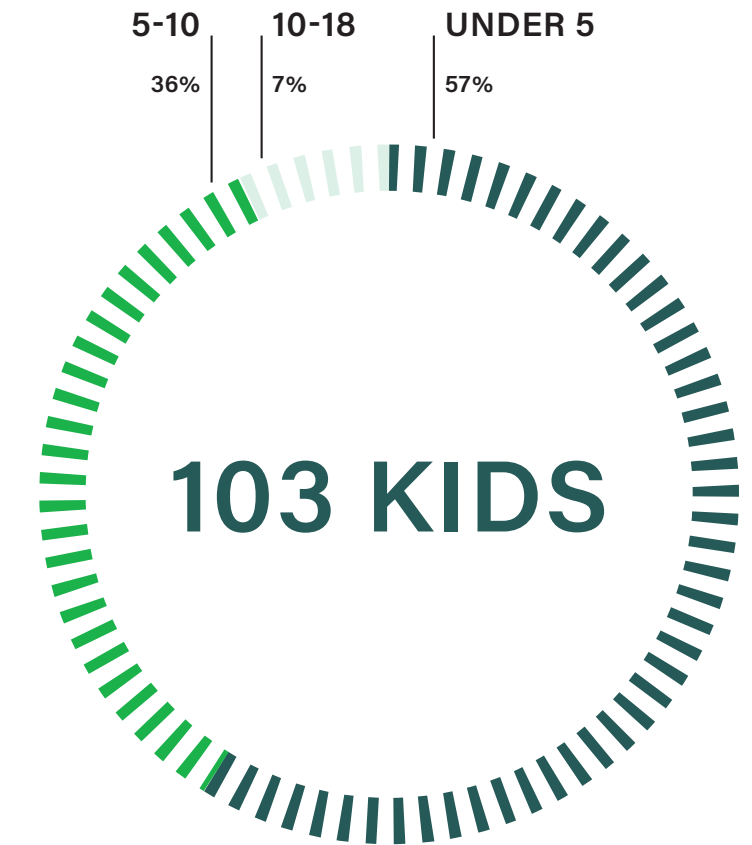


200+ PEOPLE ENGAGED

COLUMBIA CITY LIBRARY | 6/29



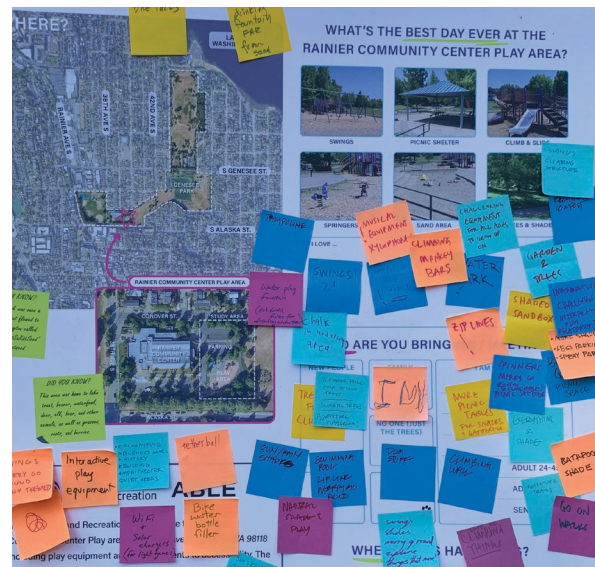
30+ PEOPLE ENGAGED



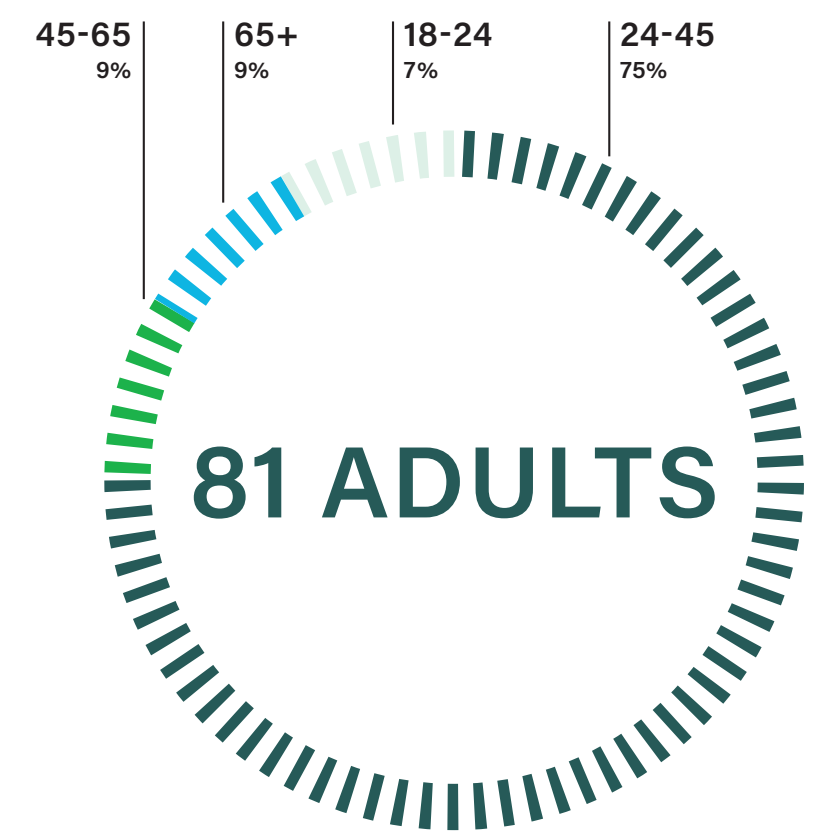
Survey Questions



Drawings



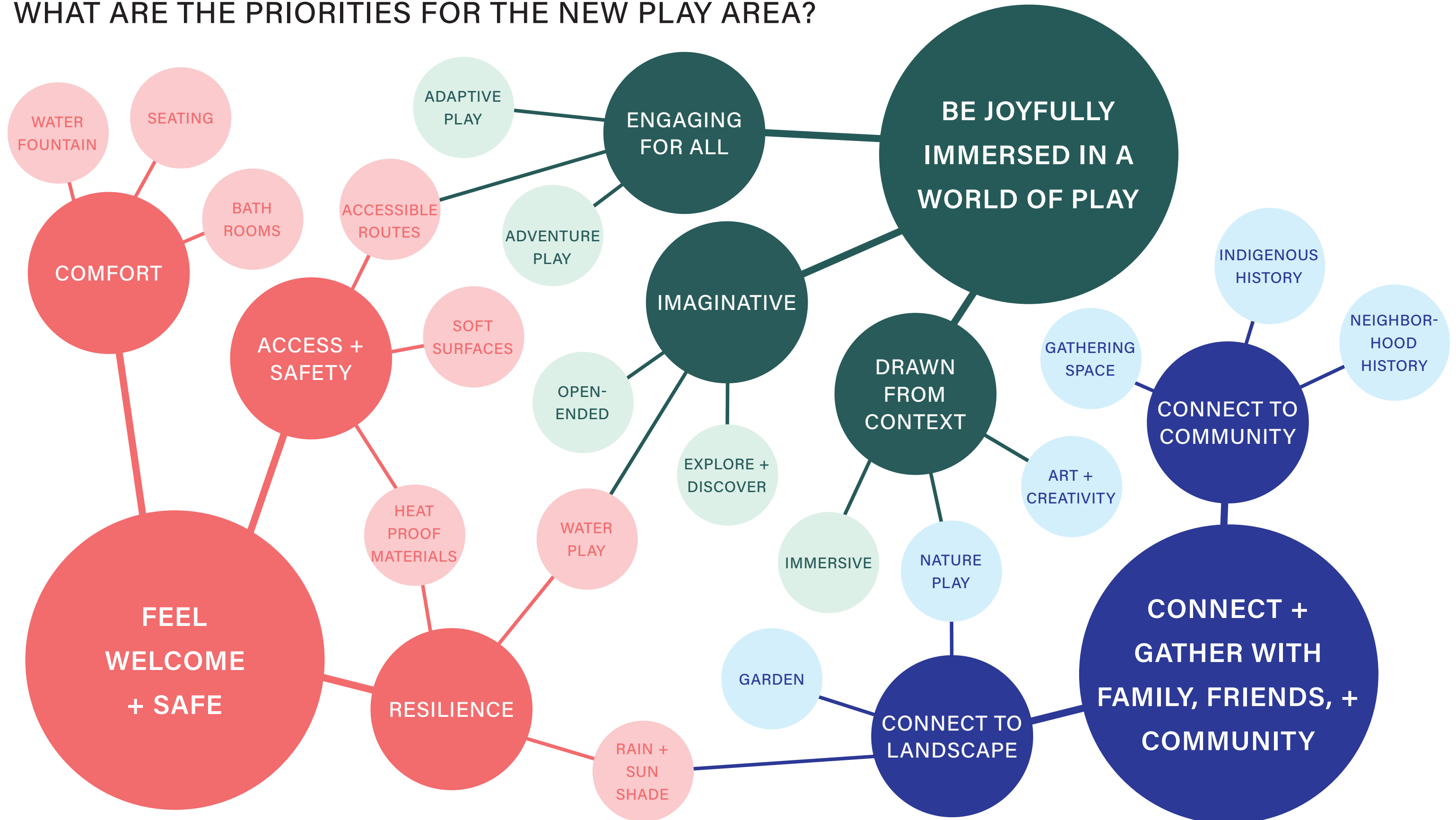
Boards w/ Community Notes



# WHAT DO PEOPLE LOVE ABOUT THE CURRENT PLAY AREA?



# WHAT ARE THE PRIORITIES FOR THE NEW PLAY AREA?



# ROUND 2 ENGAGEMENT EVENTS

Through two in-person engagement events and an online survey, we showed our concept designs to the neighborhood. We heard from kids and families about which elements they were excited about, what they liked and didn't like about the options, and what we should prioritize in the final design.

## BIG DAY OF PLAY | 8/19



50+ PEOPLE ENGAGED

## RAINIER COMMUNITY CENTER MEETING | 8/23

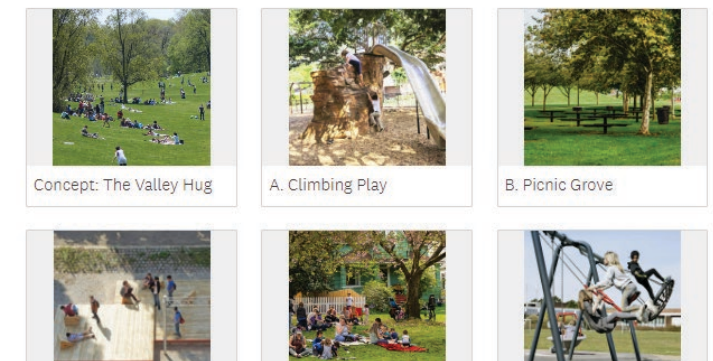


30+ ATTENDEES

## ONLINE SURVEY



5. Which elements are your favorites? (Check as many as you want!)



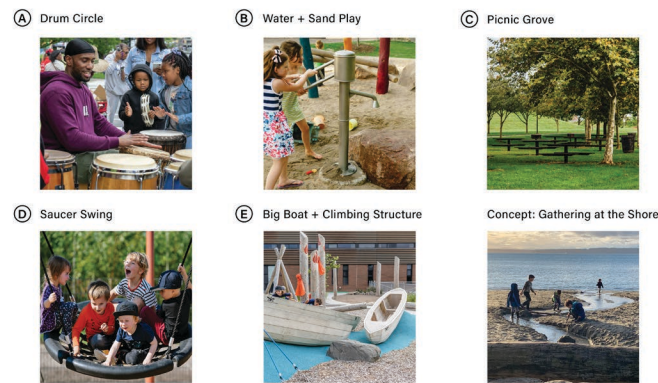
35 RESPONSES

# ENGAGEMENT EVENT BOARDS

## OPTION 1: GATHERING AT THE SHORE

This design draws on the site's history as a former slough that fed into Lake Washington. In this option, we wanted to create a "shore" as a place to play and gather.

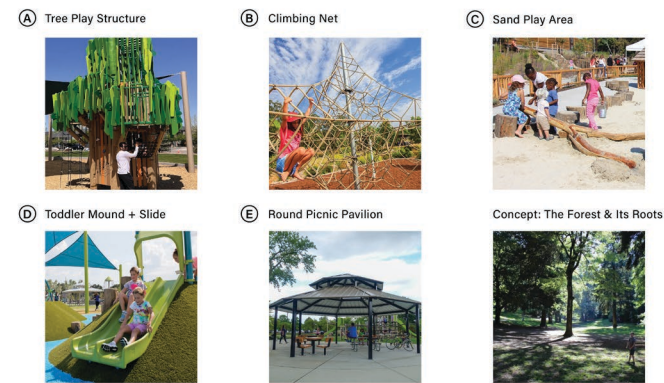
- Key features:**
- Water-themed play elements
  - Large central play area
  - Spaces around the edge to sit, gather, and enjoy community events



## OPTION 2: THE FOREST & ITS ROOTS

This design draws on the play area's shady trees and the historic forests of Columbia City. In this option, we wanted to create the feeling of exploring a forest.

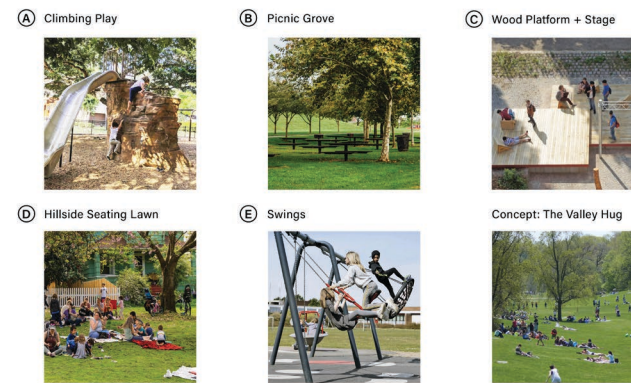
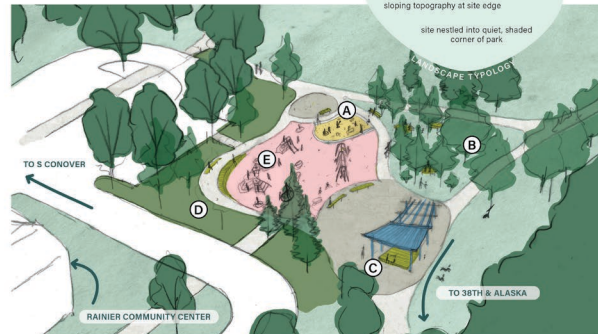
- Key features:**
- Forest-themed play elements
  - Smaller "play pockets" sheltered by trees with seat walls for guardians
  - Central picnic shelter with views into the play areas



## OPTION 3: THE VALLEY HUG

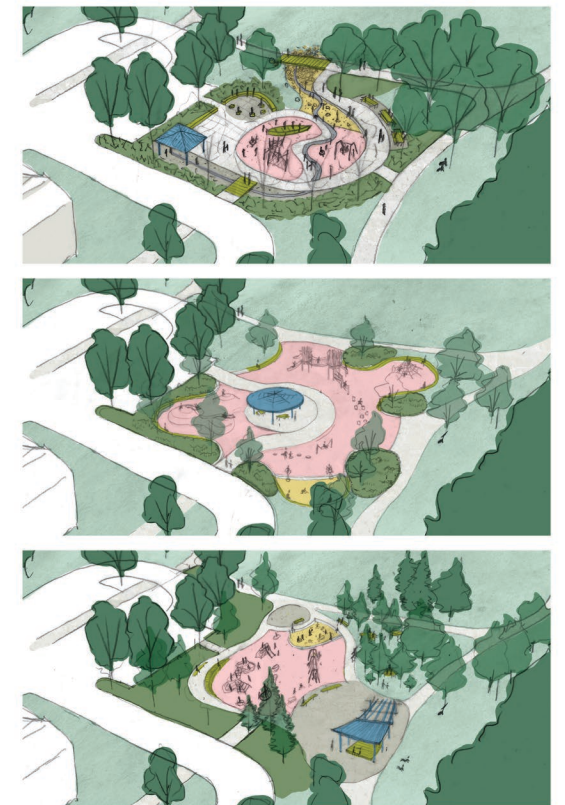
This design draws on Genesee Park's name, which comes from the Seneca word for "beautiful valley." In this option, we wanted to create a valley of play that feels sheltered and cozy.

- Key features:**
- Adventurous climbing + swinging play
  - Central play area "hugged" by trees and planting
  - Double-sided pavilion with seating on the hill



## BUILD YOUR BEST DAY AT THE RAINIER CC PLAY AREA!

Now that you've seen all three options, we want to know what you liked the most! The final design will likely be a combination of elements from multiple concepts, so we want to hear what you're most excited to do in the renovated play area.





THE EXISTING CLIMBING STRUCTURE IS VERY EXTENSIVE AND VARIED. I HOPE WHATEVER CLIMBING STRUCTURE REPLACES IT IS AS **ENGAGING**

I LIKE THAT THE EXISTING PLAY GROUND HAS A **COVERED SHELTER FOR PROTECTION FROM THE RAIN AND PROVIDES SHADE.**

WE WANT TO SEE OUR **TREES PRESERVED!**

**MUST HAVE SWINGS OR ELSE THEY'RE DISAPPOINTED**

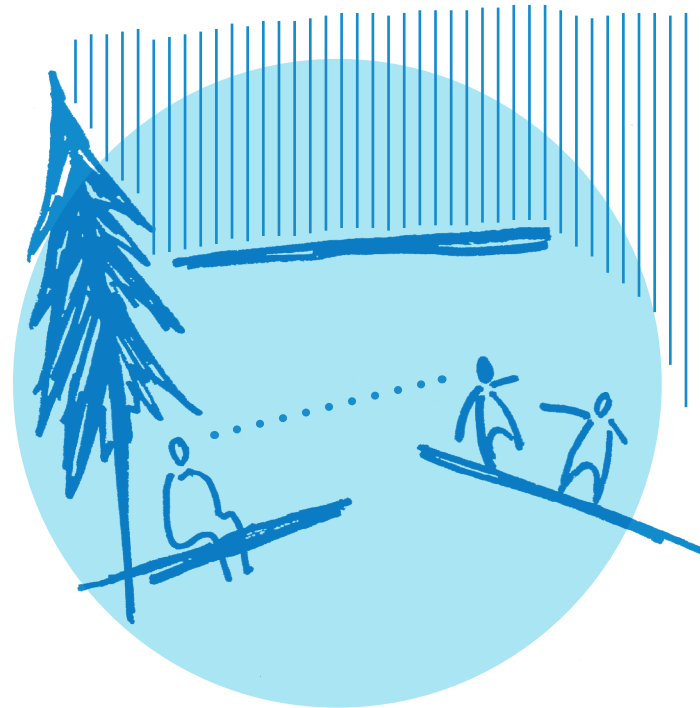
**SANDBOX MAKES THIS PLACE SPECIAL; PLEASE KEEP SAND!!!**

WHAT IS SPECIAL ABOUT THIS PLACE NOW?



## A DAY AT RAINIER COMMUNITY CENTER PLAY AREA SHOULD BE....

## COMFORTABLE



- PROVIDE **ACCESSIBLE + CLIMATE RESILIENT** AMENITIES
- **SHADE + SHELTER** PARK-GOERS FROM SUN + RAIN
- ENSURE SAFETY WITH CLEAR **BOUNDARIES + SIGHT LINES**

## IMMERSIVE



- PROVIDE **VARIED PLAY** OPTIONS FOR ALL AGES
- SPARK **INDEPENDENT, IMAGINATIVE, + CREATIVE PLAY**
- DRAW IN THE **LOCAL LANDSCAPE CONTEXT**

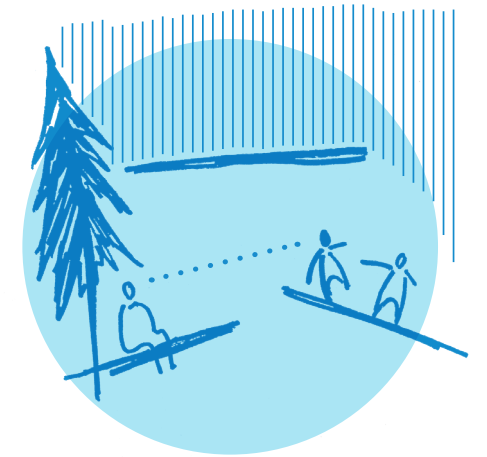
## CONNECTED



- CREATE **MULTIFUNCTIONAL GATHERING SPACES** AT DIFFERENT SCALES
- CREATE A **DISTINCTIVE + EXCITING IDENTITY**



COMFORTABLE



IMMERSIVE



CONNECTED



WHAT ELSE IS NEEDED HERE?

# FAVORITE ELEMENTS



WATER AND SAND



TREE CLIMBING



CLIMBING NET



SAND AREA



BIG BOAT



MOUND + SLIDE



ROCK CLIMBING



SWINGS

THE EXISTING SAND IS A NICE FEATURE, ADDING WATER WOULD BE GREAT.



A WATER FEATURE WITHIN WALKING DISTANCE OF OUR HOME WOULD BE A GAME CHANGER FOR US IN THE SUMMER. MY SON WOULD BE THERE EVERY DAY.



PICNIC GROVE ALLOWS FOR LESS HOVERING, ADULT SOCIALIZING, SHADE.

APPEALS TO AND IS ACCESSIBLE TO DISABLED CHILDREN



THE SAUCER SWING IS ONLY GOOD FOR YOUNG KIDS. REGULAR SWINGS ARE GOOD FOR ALL AGES.

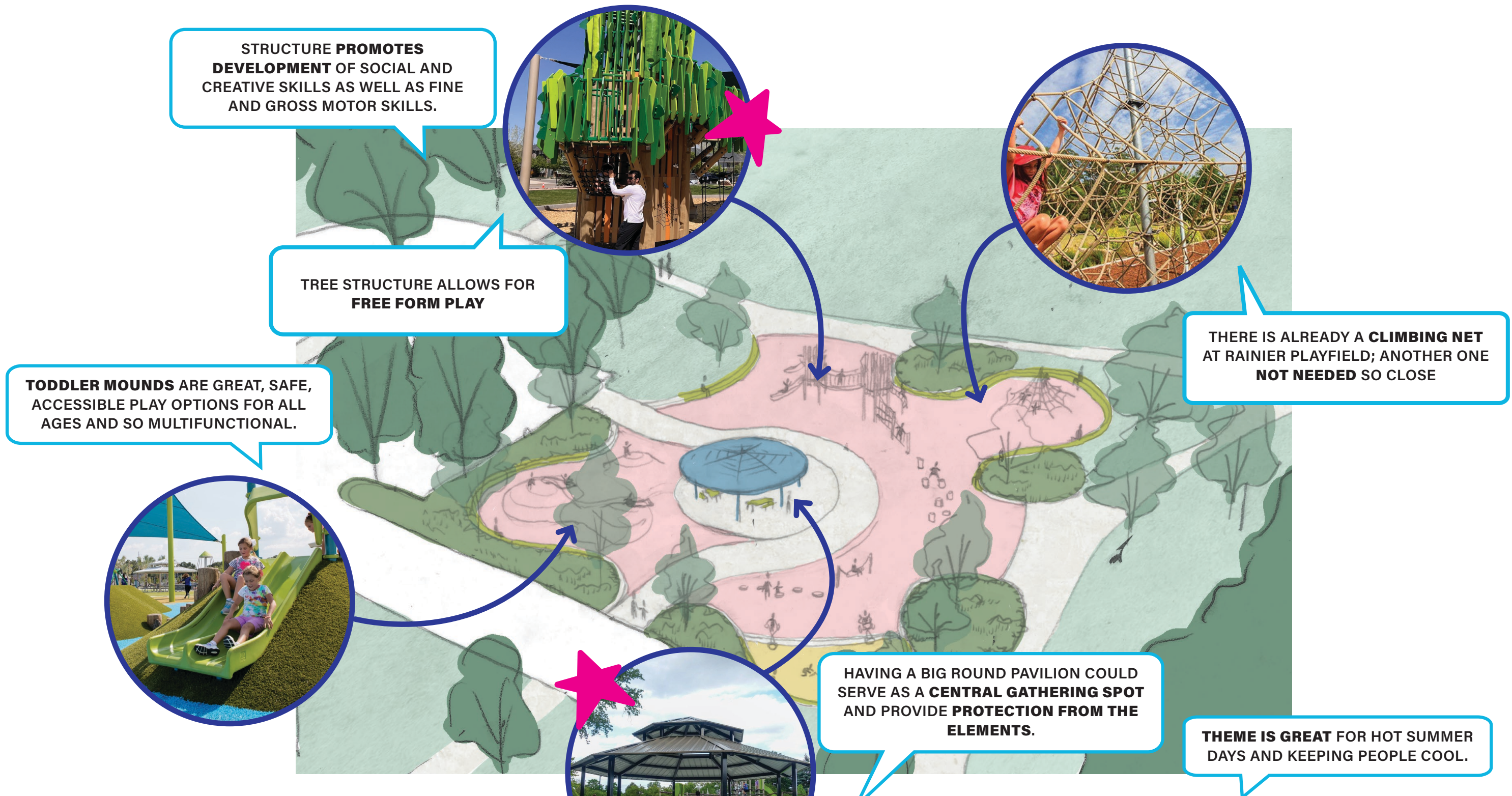


LAKE/Shore theme is cool + makes sense!

CLIMBING AND BIG BOAT SEEM UNSTRUCTURED - A GOOD THING.

# GATHERING AT THE SHORE

 MOST COMMENTED-ON ELEMENTS



**STRUCTURE PROMOTES DEVELOPMENT OF SOCIAL AND CREATIVE SKILLS AS WELL AS FINE AND GROSS MOTOR SKILLS.**



**TREE STRUCTURE ALLOWS FOR FREE FORM PLAY**



**THERE IS ALREADY A CLIMBING NET AT RAINIER PLAYFIELD; ANOTHER ONE NOT NEEDED SO CLOSE**

**TODDLER MOUNDS ARE GREAT, SAFE, ACCESSIBLE PLAY OPTIONS FOR ALL AGES AND SO MULTIFUNCTIONAL.**



**HAVING A BIG ROUND PAVILION COULD SERVE AS A CENTRAL GATHERING SPOT AND PROVIDE PROTECTION FROM THE ELEMENTS.**

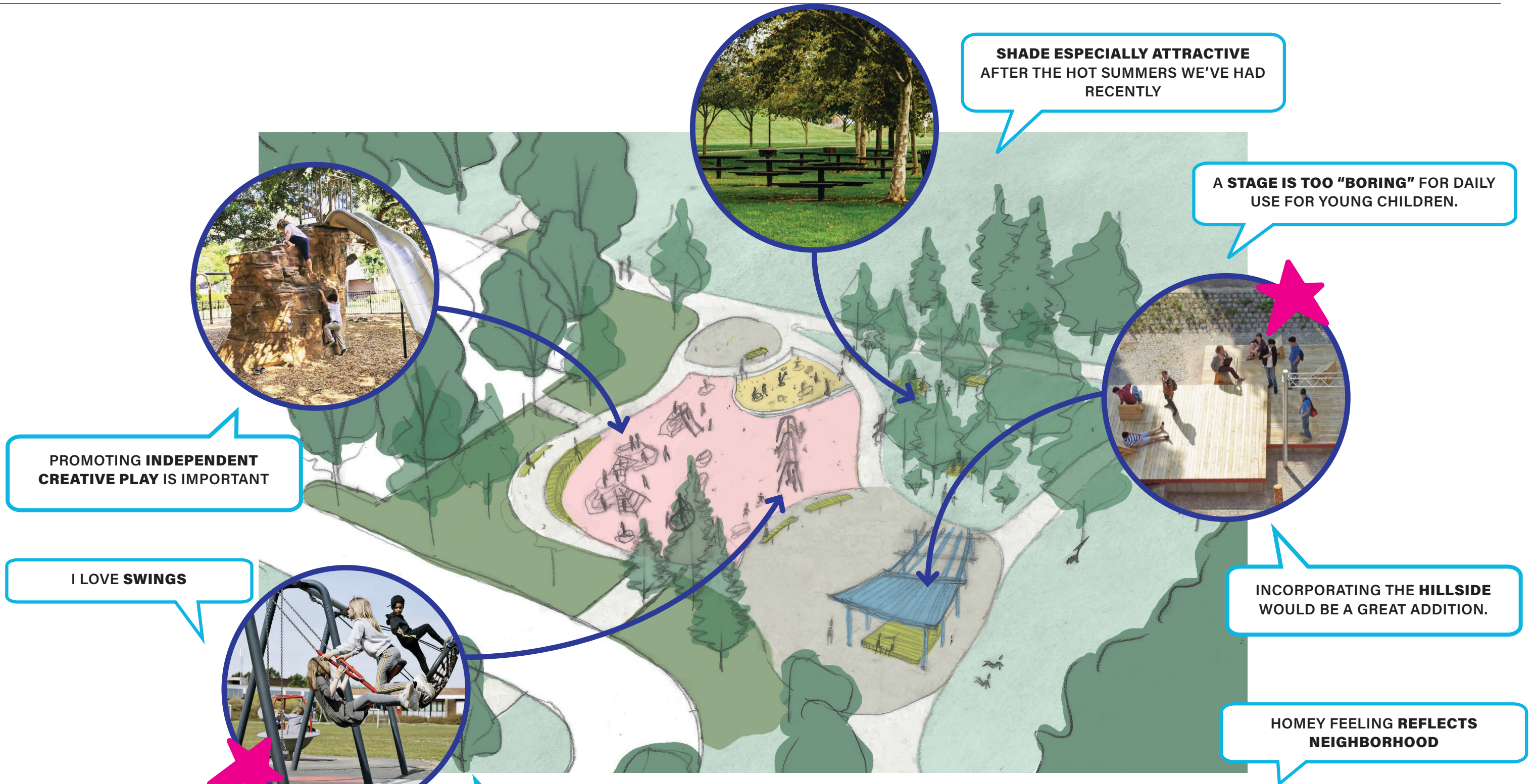


**THEME IS GREAT FOR HOT SUMMER DAYS AND KEEPING PEOPLE COOL.**

**ALWAYS NICE TO HAVE A PLACE FOR SHADE AND AWAY FROM RAIN IN SEATTLE.**

**THE FOREST AND ITS ROOTS**

**MOST COMMENTED-ON ELEMENTS**



**SHADE ESPECIALLY ATTRACTIVE  
AFTER THE HOT SUMMERS WE'VE HAD  
RECENTLY**

**A STAGE IS TOO "BORING" FOR DAILY  
USE FOR YOUNG CHILDREN.**



**INCORPORATING THE HILLSIDE  
WOULD BE A GREAT ADDITION.**

**HOMEY FEELING REFLECTS  
NEIGHBORHOOD**



**PROMOTING INDEPENDENT  
CREATIVE PLAY IS IMPORTANT**

**I LOVE SWINGS**



**WOULD LOVE TO SEE MORE  
VARIETY IN SWINGS**

# THE VALLEY HUG

 MOST COMMENTED-ON ELEMENTS