



Clean Cities Community Clean Teams Weekly Report

November 18, 2021

Reporting Week November 8 through November 14

Week in Review

This week the community clean team focused on two large emphasis areas, Atlantic City Boat Ramp Park-Mapes Creek and Ella Bailey Park as well as the various litter and trash pick-up locations citywide. The following summary includes Clean Cities work accomplished by Parks and SDOT Clean Cities Crews.

By the Numbers:

- Trash mitigation completed at 68 locations by Parks/SDOT crews, and 22 additional locations by SDOT crews
- 4,048 needles collected by Parks Crews
- 127,065 lbs. trash collected via Community Clean Teams
- 88 blocks of litter pickup by SDOT crews
- 476 tents counted onsite

Clean Cities Routes Site Cleaning Examples By 4 Quadrants

NW Community Clean Team

- Bitter Lake: No-Tents, 58-Needles, 1,340lbs of debris, 5 blocks of litter pickup -11/8, 11/12
- N 145th St and Midvale Ave N: 1 block of litter pickup, 80lbs of debris -11/8
- N 145th St and Lenora pl N: 1 block of litter pickup -11/8
- N 145th St and Stone Ave N: 1 block of litter pickup -11/8
- Puetz Golf: 32-Tents, 11-Structures, 5-RV's, 317-Needles, 3,765lbs of debris -11/8, 11/9, 11/10, 11/13
- **Ballard Commons**: 28-Tents, 6-Structures, 431-Needles, 6,075lbs of debris -11/9, 11/10, 11/12, 11/13

Before



After



- Ballard Library: 4-Tents, 8-Needles, 505lbs of debris -11/9, 11/10, 11/12
- Gasworks Park: 1-Tent, 1 block of litter pickup -11/9
- **24th and Shilshole**: 2-Tents, 4-Structures, 12-Needles, 2,300lbs of debris -11/9

Before

During



During

After



- 4465 Shilshole Ave NW: 1 block of litter pickup, 105lbs of debris -11/9
- Kinnear Place: 5-Tents, 4-Needles, 180lbs of debris, 1 block of litter pickup -11/9, 11/13
- Kinnear Park: 11-Tents, 2-Structures, 92-Needles, 2,000lbs of debris, 1 block of litter pickup -11/9, 11/13
- Westlake Ave N And W Nickerson St: 1 block of litter pickup, 105lbs of debris -11/9
- Licton Springs: 4-Tents, 1-Structure, 150lbs of debris -11/9, 11/12
- 105th and Evanston: 1-Tent, 1-Structure, 32-Needles, 800lbs of debris -11/9
- Woodland Park: 100plus-Tents, 13-Structures, 340-Needles, 3,600lbs of debris -11/9, 11/10, 11/12, 11/13
- Green Lake: 19-Tents, 15-Structures, 8-RV's, 324-Needles, 4,350lbs of debris -11/9, 11/10, 11/12, 11/13
- Counterbalance Park: 2-Tents, 8-Needles, 550lbs of debris -11/9, 11/13
- N 125th and Interurban Trail: 2-Tents, 12-Needles, 500lbs of debris -11/13

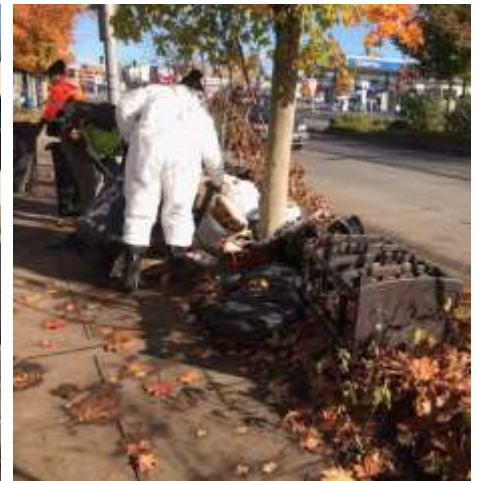
NE Community Clean Team

- **Homewood:** 4-Tents, 1-Structure, 2,280lbs of debris -11/8

Before



During



After



- Bellevue Park Place: 2-Tents, 3-Structures, 60-Needels -11/8
- NE 130th St and 35th Ave NE: set up no parks, 1 block of litter pickup -11/8, 11/10
- **Tashkent Park**: 9-Tents, 2-Structures, 2-Needles, 400lbs of debris -11/8, 11/13

Before

During

After



- Broadway Hill Park: 2-Tent, 100lbs of debris, 3 blocks of litter pickup -11/8
- Victory Creek: 5-Tents, 300lbs of debris -11/8
- Jackson Golf: 4-Tents, 4-Structures, 46-Needles, 1,200lbs of debris -11/8, 11/9, 11/12
- 5th Ave NE and NE 145th: 4-Tents, 16-Needles, 350lbs of debris -11/8
- Albert Davis: No-Tents, 4-Needles, 500lbs of debris -11/8
- 45th I-5 On-Ramp: 5-Tents, 4-Structures, 36-Needles, 700lbs of debris -11/8
- Washington Park: 1 block of litter pickup -11/9
- Ne 95th St and Sandpoint Way NE: 1 block of litter pickup, 105lbs of debris -11/9
- NE 73rd St and 8th Ave NE: 1 block of litter pickup, 105lbs of debris -11/9
- Ravenna and NE 65th St: 1 block of litter pickup -11/10
- Pasadena Pl: 2-Tents, 10-Needles -11/10
- Burke Gilman Trail University Bridge: 1-Tent -11/10
- Burke Gilman Trail Meridian Ave: No-Tents, 24-RV's, 200lbs of debris -11/10
- University Playground: No-Tents -11/12
- Thornton Creek: No-Tents, 1-RV -11/12
- Magnuson Park: 3-Tents, 1-Structure -11/12

- Gilman’s Playground: -2 Tents, 1 block of litter pickup -11/12, 11/13
- **Bagley Viewpoint:** 1-Tent, 2-Needles, 100lbs of debris -11/13

Before



During



After



SW Community Clean Team

- SW Findlay St and 26th Ave SW Vicinity: No-Tents, 6-Structures, 16-Needles, 500lbs of debris -11/9
- SW Juneau St and 26th Ave SW Vicinity: 6-Tents, 4-Structures, 18-Needles, 2,500lbs of debris -11/9
- Westcrest Park: 8-Tents, 4-Structures, 21-Needles, 800lbs of debris, 1 block of litter pickup -11/9
- **South Park:** 2-Tents, 1-Structure, 20-Needles, 100lbs of debris -11/9

Before



After



- South Park Community Center: 2 blocks of litter pickup, 420lbs of debris -11/9
- 1st Ave S between Spokane & Fidalgo: 15 blocks of litter pickup, 120lbs of debris -11/10
- Airport Way S and S Snoqualmie St Vicinity: 10-Tents, 6-Structures, 1,000lbs of debris -11/10
- S Mead St from 1st Ave S to E Marginal Way S: 5-Tents, 4-Structures, 600lbs of debris -11/10
- 7th Ave S and S Fidalgo St Vicinity: 1-Tent, 5-Structures, 5-RV’s, 9-Needles, 40lbs of debris -11/10
- Stanley Ave S and S Hardy St Vicinity: No-Tents, 4-RV’s, 100lbs of debris -11/12
- 23rd Ave SW and Charlestown St: No-Tents, 15-Needles, 250lbs of debris, 1 block of litter pickup -11/12
- Rotary Viewpoint: 1 block of litter pickup -11/12

- **Meyers Way S:** 1-Tent, 8-Needles, 1,650lbs of debris, 1 block of litter pickup -11/12

Before



After



SE Community Clean Team

- Pioneer Square: 2 blocks of litter pickup, 20lbs of debris -11/8
- 10th Ave E: 6 block of litter pickup, 60lbs of debris -11/8, 11/9
- E Union St: 1 block of litter pickup, 25lbs of debris -11/8
- Seven Hills Park: 16-Tents, 69-Needles, 650lbs of debris -11/8, 11/9, 11/13
- Pratt Park: 1-Tent, 1-Structure, 5-Needles, 50lbs of debris -11/8, 11/13
- Prefontaine Park: No-Tents, , 5-Needles, 820lbs of debris -11/8, 11/9, 11/10, 11/12
- 4th and Yesler: 15-Tents, 3-Structure, 62-Needles, 1,405lbs of debris -11/8, 11/9, 11/12
- **8th and King:** 24-Tents, 6-Structures, 393-Needles, 3,150lbs of debris, 2 blocks of litter pickup -11/8, 11/12

Before



During



After



- Freeway Park: 5-Tents, 1-Structure, 20-Needles, 4,000lbs of debris, 1 block of litter pickup -11/8, 11/9
- E Pike 12th Ave to E Olive: 6 blocks of litter pickup, 120lbs of debris -11/9
- 11th Ave: 5 blocks of litter pickup, 80lbs of debris -11/8, 11/9
- Utah Ave S and Stacy St to Atlantic: 4-Tents, 8-Structuers, 50-Needles, 1,510lbs of debris, 1 block of litter pickup -11/9
- 8th and Massachusetts: No-Tents, 3-RV's, 20-Needles, 500lbs of debris -11/9
- 8th and Holgate: No-Tents, 160lbs of debris, 1 block of litter pickup -11/9
- 4th and Royal Brougham: 15-Tents, 3-Structures, 255-Needles, 4,440lbs of debris, 4 blocks of litter pickup -11/9, 11/10, 11/12
- 4th and Royal Brougham (Stairs): 10-Tents, 2-Structures, 45-Needles, 2,000lbs of debris -11/9
- **MLK Memorial:** No-Tents, 50-Needles, 1,500lbs of debris -11/10

Before



After



- 4th Ave S & Royal Brougham (SDOT): 2 blocks of litter pickup, 80lbs of debris -11/10
- MLK Park: 1 block of litter pickup -11/10
- Portside Trail: 10-Tents, 2-Structures, 20-Needles, 550lbs of debris, 2 blocks of litter pickup -11/10

- Prefontaine Pl: 2 blocks of litter pickup, 330lbs of debris -11/10, 11/12
- 1st Ave S from Railroad Way: No-Tents, 280lbs of debris, 1 block of litter pickup -11/9, 11/10
- Utah Ave S from S Stacy: 12-Tents, 8-RV's, 20-Needles, 430lbs of debris, 2 blocks of litter pickup -11/10
- 10th and Dearborn: 4-Tents, 6-Structures, 75-Needles, 1,580lbs of debris, 1 block of litter pickup -11/10
- Yesler Terrace/ Harborview Emphasis Area: 6-Tents, 12-RV's, 200-Needles, 500lbs of debris, 1 block of litter pickup -11/10
- Occidental and Edgar Martinez: 1 block of litter pickup -11/10
- 3rd Ave and Edgar Martinez: 6-Tents, 8-Structures, 10-Needles, 800lbs of debris -11/10
- Dearborn and Poplar to Bush St: 2-Tents, 3-Structures, 15-Needles, 1,280lbs of debris, 2 blocks of litter pickup -11/10
- Judge Charles M Stokes Overlook: 3-Tents, 1-Structure, 60lbs of debris -11/12
- Sturgis Park: 14-Tents, 3-Structures, 500lbs of debris -11/12
- Jefferson Park: 22-Tents, 13-RV's 22-Needles, 2,900lbs of debris -11/12
- Navigation Center: 14-Tents, 3-Structures, 221-Needles, 1,300lbs of debris -11/12
- City Hall: 1-Tent, 1 block of litter pickup -11/12
- Dr. Blanch Lavizzo: 4-Tents, 300lbs of debris -11/13

Clean Cities Emphasis Areas

- Atlantic City Boat Ramp Park-Mapes Creek: 11/9. SE District crew continued this jamboree working in the creek. They removed blackberry and other invasive plant material from Mapes Creek. Poplar tree volunteers were cut down. Wind fall branches were removed. They excavated peat soil and sediment from bio retention cells in the Atlantic City Boat Ramp parking lot. This project will be ongoing until completed.

Removing blackberry and other invasives from the creek





Line trimming interior along fence line





Removing tree cuttings



- Ella Bailey Park: 11/10. CW District cut back ferns with dead fronds, weeded invasives, and spread mulch along the slope and shrub beds. Roses were hedge back, mulched turn-around circle near play area, clear drains and soil sloughing off hillside from school district plantings, and the sidewalk was edged.

Sr. Gardener discussing the workplan with the crew



Before work began



Line trimming before laying burlap



Laying burlap for weed suppression before mulching



Tractor dropping mulch at various sections of the park



Spreading mulch





Project completed



Look Ahead Week of November 15 to November 21

Emphasis Cleans:

- NW: 601 1st Ave N
- NW: Interurban Trail 125th -110th Ave
- SW: 23rd Ave SW & Charlestown
- SE: Express lanes (Freeway Park)
- SE: Rainier Ave & I -90
- SE: Hubble place

The Crews will be doing litter picks, trash mitigation; any Bio- Hazard removal that may be required, and related grounds maintenance work. Crews will also be providing maintenance and cleaning efforts both in and around these parks. Field inspections and cleaning of right of way areas will include stairways, multi-use paths, streets, and sidewalks in the immediate vicinity of these parks.