



Clean Cities Community Clean Teams Weekly Report

November 4, 2021

Reporting Week October 25 through October 31

Week in Review

This week the community clean team focused on one large emphasis area, Kobe Terrace Park as well as the various litter and trash pick-up locations citywide. The following summary includes Clean Cities work accomplished by Parks and SDOT Clean Cities Crews.

By the Numbers:

- Trash mitigation completed at 80 locations by Parks/SDOT crews, and 25 additional locations by SDOT crews
- 2,689 needles collected by Parks Crews
- 107,440 lbs. trash collected via Community Clean Teams
- 62 blocks of litter pickup by SDOT crews
- 1 mile of vegetation management
- 779 tents counted onsite
- 2 signs of graffiti removed

Clean Cities Routes Site Cleaning Examples By 4 Quadrants

NW Community Clean Team

- **Westlake Ave N and Dexter Ave:** 3-Tents, 4-Structures, 50-Needles, 2,880lbs of debris, 1 block of litter pickup, assist arrowboard truck -10/25

Before



After



- Bitter Lake: No-Tents, 40lbs of debris -10/25
- **Puetz Golf**: 30-Tents, 13-Structures, 262-Needles, 1,800lbs of debris -10/25, 10/26, 10/27, 10/28, 10/30

Before



During

After



- 24th and Shilshole: 5-Tents, 1-Structure, 15-Needles -10/25
- Woodland Park: 100-Tents, 15-Structures, 408-Needles, 1,600lbs of debris -10/25, 10/26, 10/27, 10/28, 10/29, 10/30
- Weedin Pl NE and NE 70th St: 1 block of litter pickup, 80lbs of debris -10/26
- Aurora Ave N and Galer St: 1 block of litter pickup, 200lbs of debris -10/26
- Holman Rd NW and Greenwood: 1 block of litter pickup, 200lbs of debris -10/26
- Ballard Commons Park: 45-Tents, 5-Structures, 32-Needles, 1,700lbs of debris -10/26, 10/28, 10/29
- Ballard Library: 11-Tents, 2-Needles, 1,065lbs of debris -10/26, 10/28, 10/29, 10/30
- Kinnear Place: 3-Tents, 1-Structure -10/26

- Kinnear Park: 6-Tents, 150lbs of debris -10/26
- Northacres Park: 1-Tent, 10-Needles, 2-RV's, 200lbs of debris -10/26
- 4th Ave NE and 145th St: No Tents, 15-Needles, 80lbs of debris -10/26
- **Golden Gardens Park:** No-Tents, 1-Structure, 300lbs of debris -10/26

Before



During



Before



After



- Licton Springs: 4-Tents, 1-Structure, 53-Needles, 1,800lbs of debris -10/26, 10/27, 10/28, 10/29, 10/30
- Ballard Commons: 32-Tents, 5-Structures, 67-Needles, 1,400lbs of debris -10/26, 10/30
- Green Lake: 11-Tents, 4-Structures, 50-Needles -10/26
- Counterbalance Park: 3-Tents, 3-Needles, 700lbs of debris -10/26
- Dexter Ave N and Aurora Ave N: 1 mile of vegetation management, leave blowing clearing stairways -10/27
- 9748 Palantine Ave N: 1 sign of graffiti cleaned, power washed -10/27
- Mary Ave NW and 85th St: 9-Tents, 1-Structure, 11-Needles, 300lbs of debris -10/27
- Green Lake Park NW: 35-Tents, 12-Needles, 100lbs of debris -10/27
- Green Lake Park: 30+Tents, 3-Structures, 78-Needles, 830lbs of debris -10/29, 10/30
- Bitter Lake CC: 60-Tents, 4-Structures, 25-Needles, 1,055lbs of debris -10/29

NE Community Clean Team

- **Jackson Golf:** 6-Tents, 4-Structures, 49-Needles, 3,360lbs of debris -10/25, 10/26, 10/29

Before



During



After



- Victory Creek: 6-Tents, 7-Needles, 950lbs of debris -10/25
- NE 45th St off Ramp from Northbound: 6-Tents, 21-Needles, 720lbs of debris -10/25, 10/29
- NE 50th St Northbound I-5 On Ramp: 4-Tents, 2-Structures, 32-noodles, 1,895lbs of debris -10/25, 10/29
- Bellevue Place Park: 4-Tents, 2-Structures, 100-Needles -10/25
- Tashkent Park: 3-Tents, 1-Structure, 60-Needles -10/25
- Broadway Hill Park: 2-Tents, 1-Structure, 16-Needles, 500lbs of debris -10/25, 10/28
- 35th Ave NE and NE 130th St: 1 block of litter pickup, 100lbs of debris -10/26
- Sandpoint Way NE & NE 125th St: 1 block of litter pickup, 100lbs of debris -10/26
- NE Camp Parkway and NE 40th St: 1 block of litter pickup, 200lbs of debris -10/26
- Banner Way NE and 5th Ave NE: 1 block of litter pickup, 60lbs of debris -10/26
- 5th Ave NE and NE 145th St: 1-Tent, 1-Structure, 20-Needles, 150lbs of debris -10/26
- Virgil Flaim Park: No-Tents, 3-RV's, 20lbs of debris (No photos provided) -10/26
- Pasadena Pl NE: 2-Tents, 15-Needles -10/27
- **NE 75th St and Roosevelt Way NE:** 1 block of litter pickup, TCP and did a little brush trimming and leave pick up -10/27

Before



After



- Burke Gilman Trail and University Bridge: 1-Tent, 3-Needles -10/27
- Burke Gilman Trail Meridian: 15-RV's, 80lbs of debris -10/27
- Pasadena Pl NE and NE 42nd St: 19-Tents, 4-Structures, 2,360-Needles, 12,140lbs of debris, 1 block of litter pickup -10/26, 10/28, 10/30
- **4125 University Way NE**: 1 block of litter pickup, 300lbs of debris -10/27

Before

After



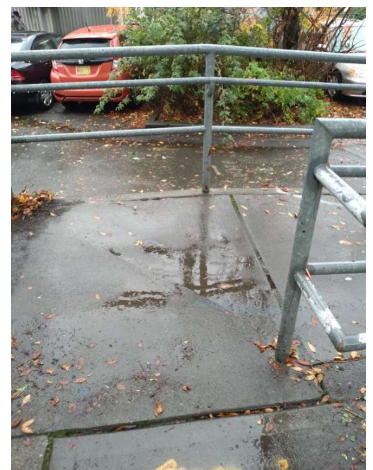
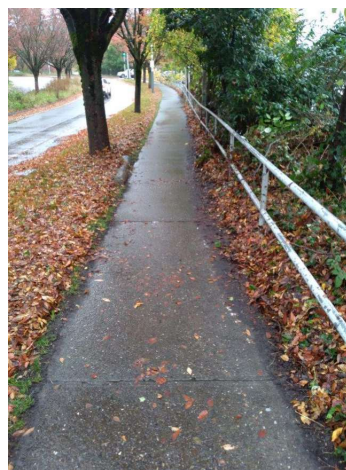
- 5200 University Way NE: 1 sign of graffiti cleaned; power washed -10/27
- **915 NE Boat St**: 1 block of litter pickup, 400lbs of debris -10/27

Before

After

Before

After



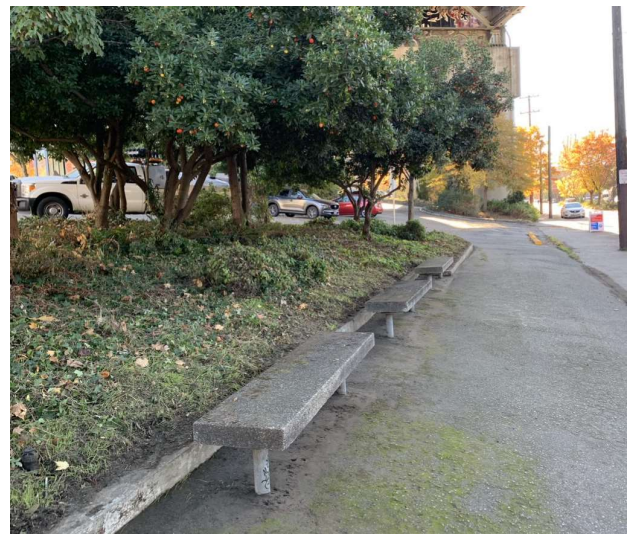
- 19th Ave e and E Galer St: 1 block of litter pickup -10/28
- Erickson Pl NE and 35th Ave NE: 1 block of litter pickup, 200lbs of debris -10/28
- Thornton Creek: 3-RV's, 200-Needles -10/29
- Magnuson Park: 2-Tents, 1-Structure -10/29
- NE Campus Pkwy: 1-Tent, 5-Needles -10/29
- University Playground: No-Tents, 300lbs of debris -10/29

- **Harvard Ave E & E Allison St:** 6 blocks of litter pickup, 440lbs of debris, 2 blocks of sidewalk cleaned, 7 trees pruned, removed bindweed off shrubs and trees, cut back grass & vines in the parking strip on E Allison, Work done south side of E Allison St. Pulled Clematis off trees & shrubs, cut back blackberry. Hedged honeysuckle back to edge of sidewalk. Picked up 6 bags of garbage from under strawberry trees, Work done in north end of complex. Cleared the sidewalk of weeds, excess soil, and leaves. Pruned back strawberry bushes. Picked up 3 bags of garbage -10/29, 10/30, 10/31

Before



After



Chipper



SW Community Clean Team

- **Westcrest Park:** 10-Tents, 2-Structures, 80-Needles, 1,780lbs of debris -10/26, 10/29

Before



During



After



- Roxhill Park: 1-Tent, 16-Needles, 700lbs of debris -10/26
- SW Juneau St and 26th Ave SW Vicinity: No-Tents, 3-Structures, 19-Needles, 1,000lbs of debris -10/26
- Rotary Viewpoint: 4-Tents, 10-Needles, 350lbs of debris -10/26, 10/29
- West Seattle Stadium: 1-Tent, 1-Structure, 600lbs of debris -10/26
- Ruby Chow Park: No-Tents, 14-Needles, 50lbs of debris, 1 block of litter pickup -10/26, 10/27
- **Airport Way S and S Snoqualmie St Vicinity:** 16-Tents, 12-Structures, 914-Needles, 2,531lbs of debris - 10/27, 10/30

Before/During



After



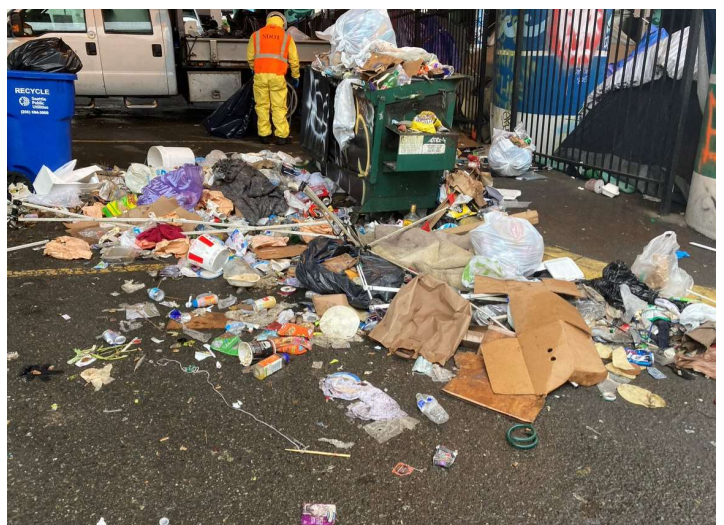
- S Mead St S from 1st Ave S to E Marginal Way S: 5-Tents, 3-Structures, 6-Needles, 400lbs of debris -10/27
- Myers Way: 3-Tents, 15-Needles, 1,150lbs of debris -10/29
- Lincoln Park: No-Tents, 10-Needles, 300lbs of debris -10/29

SE Community Clean Team

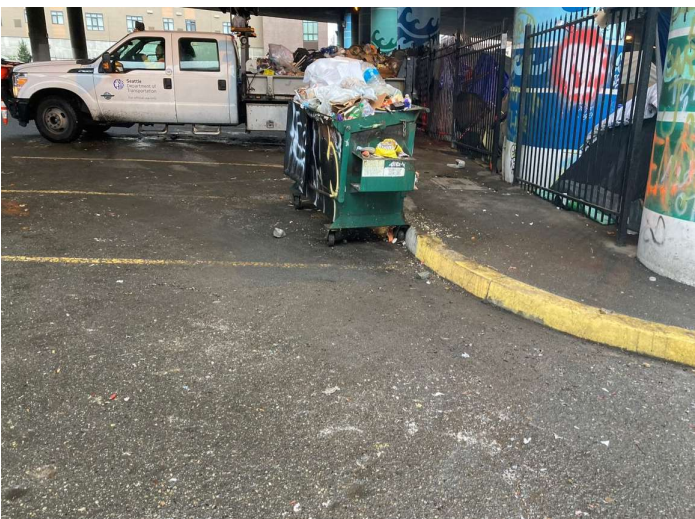
- 22nd Ave S and S Grand St: 1-Tent, 2-Structures, 50-Needles, 700lbs of debris -10/25
- Cal Ander Park: 1 block of litter pickup, assist arrowboard truck -10/25
- Pratt Park: 1 block of litter pickup -10/25

- Poplar Pl S from Dearborn to Bush St: 3-Tents, 2-Structures, 25-Needles, 1,500lbs of debris -10/25
- Poplar Pl S and S Charles St: 1 block of litter pickup, 380lbs of debris -10/25
- Prefontaine: No-Tents, 48-Needles, 750lbs of debris, 3 blocks of litter pickup -10/25, 10/27, 10/29
- Pioneer Square Pergola: 36-Tents, 4-Structures, 92-Needles, 2,620lbs of debris, 3 blocks of litter pickup -10/25, 10/26, 10/27, 10/29
- 6th Ave & Washington St: 1 block of litter pickup, 350lbs of debris -10/25
- 5th and Yesler: 5-Tents, 12-Needles, 2,700lbs of debris -10/25, 10/26
- 4th and Yesler: 10-Tents, 1-Structure, 21-Needles, 320lbs of debris, 1 block of litter pickup -10/25, 10/26, 10/29
- International District: 13-Tents, 3-Structures, 222-Needles, 4,000lbs of debris -10/25
- **8th and King St (I-5 Emphasis Area):** 31-Tents, 4-Structures, 176-Needles, 2,590lbs of debris, 1 block of litter pickup -10/26, 10/29

Before



After



- Rainier Ave S: 6 blocks of litter pickup, 50lbs of debris -10/26
- S Alaska St: 4 blocks of litter pickup, 20lbs of debris -10/26
- MLK Way S: 6 blocks of litter pickup, 50lbs of debris -10/26

- S Genesee St: 4 blocks of litter pickup, 30lbs of debris -10/26
- Cayton Corner Park: 2-Tents, 50lbs of debris, 1 block of litter pickup -10/26, 10/28
- Yesler Terrace (Harborview): 10-Tents, 2-Structures, 40-Needles, 200lbs of debris -10/26
- Alaskan Way and Marion St: No-Tents, No-Structures, 50lbs of debris -10/26
- 10th and Dearborn: 10-Tents, 7-Structures, 10-Needles, 250lbs of debris -10/26
- Free Way Park: 11-Tents, 1-Structure, 5-Needles, 50lbs of debris -10/26
- Seven Hills Park: 10-Tents, 3-Needles, 50lbs of debris, 1 block pf litter pickup, assist arrowboard truck - 10/25, 10/26
- 1st Ave S from Railroad Way S to S Royal Brougham Way: No-Tents, No-Structures, 70lbs of debris -10/27
- Utah Ave S from S Atlantic St to S Stacy St Vicinity: 8-Tents, 4-RV's, 11-Structures, 10-Needles, 1,220lbs of debris, 3 blocks of litter pickup -10/27
- **8th Ave S & Holgate**: No-Tents, 4-RV's, 2-Structures, 22-Needles , 1,550lbs of debris -10/27, 10/28

Before



After



- Occidental Ave S from Edgar Martinez Dr. to S Lander St: 4-Tents, 2-Structures, 13-RV's, 4-Needles, 780lbs of debris -10/27, 10/28
- Jack Perry Memorial: 8-Tents, 300lbs of debris -10/27
- Pioneer Square Park: 26-Tents, 3-Structures, 350lbs of debris -10/27
- Portside Trail: 10-Tents, 4-Structures, 320lbs of debris, 3 blocks of litter pickup -10/27
- Brighton Playfield: Clear of anything, lite litter pick, 5lbs of debris -10/28
- Beer Sheeva: 1-Tent, 1-Structure, 10lbs of debris -10/28
- Judge Charles M Stokes Overlook: 1-Tent, 1-Structure, 20-Needles, 220lbs of debris -10/28, 10/29
- Jefferson Golf Course: 24-Tents, 4-Structures, 10-Needles, 600lbs of debris -10/28
- Daejeon Park: 4-Tents, 8-Structures, 5-Needles, 500lbs of debris -10/28
- Sturgis Park: 13-Tents, 6-Structures, 30-Needles, 720lbs of debris -10/28, 10/29
- Amy Yee: 2-Tents, 30lbs of debris-10/29
- Martin Luther King Park: 1-Tent, 2-Structures, 6-RV's, 40lbs of debris -10/29
- Jefferson Park: 26-Tents, 23-RV's 4-Needles, 990lbs of debris -10/29
- Navigation Center Vicinity (Stairs): 3-Tents, 6-Structures,70-Needles, 350lbs of debris -10/29
- 4th and Royal Brougham Emphasis Area: 13-Tents, 4-Structures, 20-Needles, 1,380lbs of debris, 1 block of litter pickup -10/29

- Beacon Ave S & S Cheasty: Inspection and repairs of controller and vandalized irrigation system. The timer was rewired, and other broken wires were discovered from the work -10/29

Clean Cities Emphasis Areas

- Kobe Terrace Park: 10/26. The Downtown (DT) district crew removed Blackberries, laid burlap for weed suppression then spread mulch on top of the burlap on a low-grade slope facing the I-5 freeway. The district Lead used a brush cutter to remove bamboo, blackberry, and tall grasses. A crew member fine trimmed the area using a line trimmer. The Park was blown to remove leaves and small debris.

Laying burlap, delivering, and spreading mulch





Mulching complete



Brush cutting bamboo and blackberry vines



Line trimming



Look Ahead Week of November 1 to November 7

Emphasis Cleans:

- NW: Northacres park
- NE: 5th & 145th Jackson
- NE: Sand point way N. of NOAA
- NE: 95th & Sandpoint way
- SW: Myers way off ramp (fire remnants and trash)
- SE: King Street center (2nd & Jackson)
- SE: BNSF Site 4th & Washington
- SE: Cheasty GB/BLVD

The Crews will be doing litter picks, trash mitigation; any Bio- Hazard removal that may be required, and related grounds maintenance work. Crews will also be providing maintenance and cleaning efforts both in and around these parks. Field inspections and cleaning of right of way areas will include stairways, multi-use paths, streets, and sidewalks in the immediate vicinity of these parks.