

# **SEATTLE PARK DISTRICT CYCLE 2 PLANNING BOARD OF PARKS AND RECREATION COMMISSIONERS PRIORITIZATION OVERVIEW**

---

Seattle Park District Board Meeting | June 24, 2022

Presentation by:  
Marlon Herrera and Jessica Farmer, BPRC Co-Chairs



# Process Overview | BPRC Prioritization Phase

★ Aug. 2014: Park District established by voters



2015 - 2020: Cycle 1



2019 - present: SPR strategic planning, community engagement, identification of funding needs



March 24 - May 19: BPRC Recommendation Process

★ June 1: Superintendent Recommendation to Mayor



Mayor's Office & City Council Review

★ Nov 21: Council vote



Cycle 2

2014	2015 - 2020	2021	Jan	Feb	Mar	Apr	May	Jun	Jul	Aug	Sep	Oct	Nov	Dec	2023
			2022												

# BPRC Cycle 2 Prioritization Process Schedule

Date	Meeting Topic	Public Engagement Opportunity
3/10/2022	Background and Planning Context	Public comment
3/24/2022	<b>Cycle 2 Prioritization Kickoff</b>	Public comment
3/25/2022 – 4/27/2022	Subcommittee Work Phase ( <i>multiple public meetings</i> )	Public can watch live
4/14/2022	Community Check-In	Public participation
4/28/2022	Sub-Committee Reports	Public comment
5/12/2022	Discuss Draft Recommendation	Public hearing
5/19/2022	<b>Final Board Recommendation</b>	Public comment
<b><i>Additional Dates of Note (not BPRC-specific)</i></b>		
6/1/2022	Superintendent transmit budget to Mayor ( <i>including Cycle 2 funding recommendation</i> )	n/a
6/24/2022	Park District Board Meeting ( <i>City Council acting as</i> )	Public comment

**Final Recommendation available at BPRC website:**

<https://www.seattle.gov/board-of-parks-and-recreation-commissioners/park-district-cycle-2-planning>



# BPRC Guiding Principles

**In making recommendations,  
Commissioners considered the following  
Guiding Principles:**

- Alignment with Strategic Plan, Action Plan, and Values
- Responding to parallel crises: public health, economic recovery, racial equity, and climate change
- Other priorities such as community responsiveness and performance
- Mindfulness of affordability challenges and responsibly stewarding public funds



# Ongoing Community Engagement

## 2019: Broad, Future-Oriented Big Ideas

- **Support Seattle's growth and density** (preserve open space, develop multi-use spaces and facilities, build transit connections)
- **Embrace new trends** (pickleball, disc golf, roller derby, bike tracks)
- **Make parks safer** (remove encampments, clean up needles, provide more lighting)
- **Provide more access** (update facility hours, improve restrooms, support disabilities, increase low-cost recreation opportunities)
- **Engage more with community** (improve website, social media, communications, and marketing)
- **Continue maintaining the system we have** (repair pools and community centers, maintain open space)
- **Desire for more** (pools, trails, events, classes & programs, playgrounds, bathrooms, pickleball...)



**10,000+**  
people  
engaged



**2**  
City-  
wide  
events



**20+**  
listening  
sessions



**20+**  
community  
events  
attended



**50+**  
social  
media  
discussions



**8**  
online  
surveys



Engagement  
in **12**  
languages

# Ongoing Community Engagement

## 2021: Focused & Recovery-Oriented

- **Build meaningful relationship with BIPOC community** (focus on community engagement, clarify pathways to implement community-identified priorities)
- **Mitigate climate change** (invest in urban canopy, add cooling to community centers, steward natural resources sustainably)
- **Restore access to parks & recreation spaces** (address impacts of homelessness, add weekend and evening facility hours, expand restroom access)
- **Bring services to people** (additional neighborhood events and activation, maximize environmental education and urban agriculture opportunities)
- **Invest in popular assets** (maximize pedestrian usability of trails and natural spaces, repair failing amenities, add pickleball access)
- **Improve park safety** (add staff presence in outdoor and indoor spaces, re-think approach to security)
- **Look to the future** (invest in job development and employment opportunities)



**9,000+**  
people engaged



**6**  
Commission  
listening  
sessions



**2**  
partner meetings  
(20 organizations)



**9**  
Superintendent  
listening sessions  
(26  
organizations)



**21**  
community  
events &  
meetings  
attended



Engagement in  
**9**  
Languages

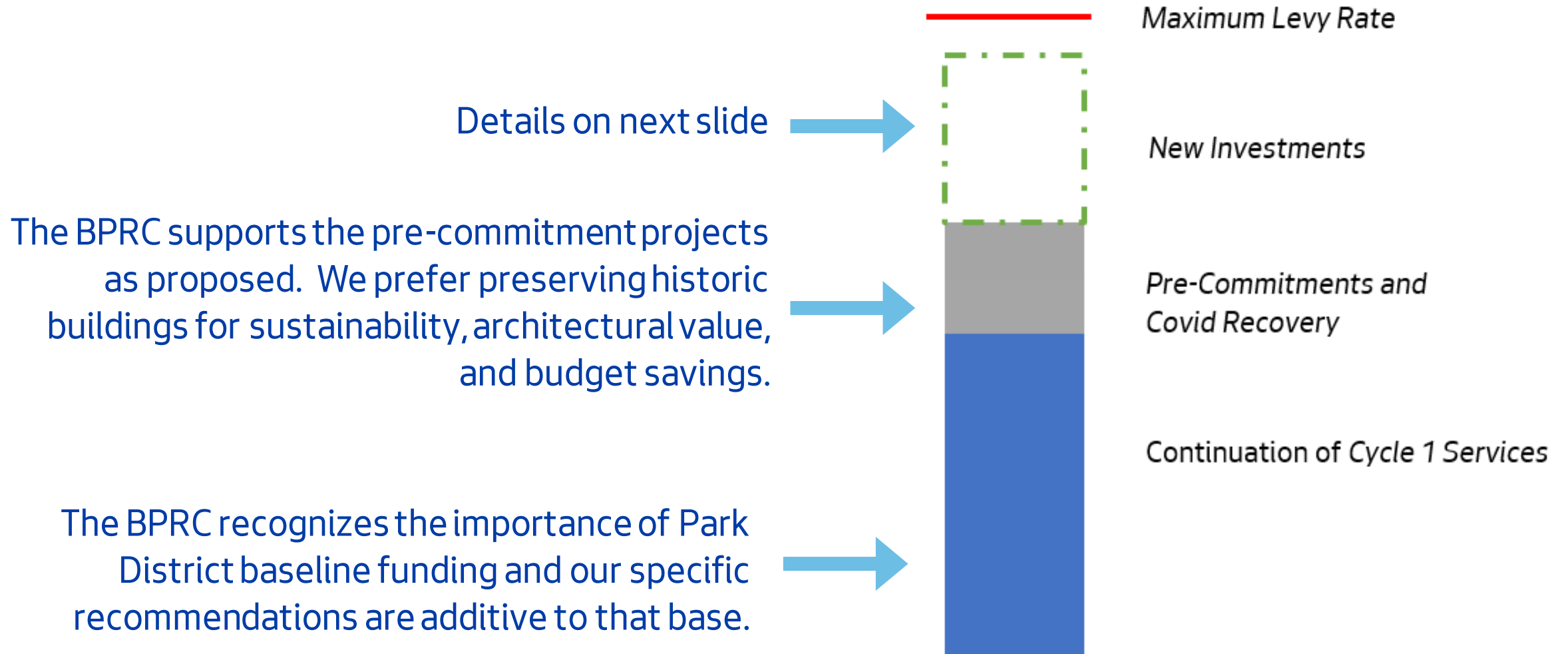


**7,000+**  
online open house  
visitors;  
**3,600+**  
surveys



**850+**  
surveys collected  
in **6** regional  
parks

# Cycle 2 Plan: Building Blocks



# Recommendation Framework

<i>Category</i>	<i>Investment Strategies</i>	<i>Recommended Funding</i>
<b>Enhancing Access and Services</b>	<ul style="list-style-type: none"><li>Improving Park Safety &amp; Activation</li><li>Enhancing Recreation Facilities &amp; Programming</li><li>Restoring Trails &amp; Improving Access To Open Space</li><li>Expanding Youth Employment &amp; Mentorship</li></ul>	<b>\$9.0 M</b>
<b>Restoring Clean, Safe &amp; Welcoming Parks &amp; Facilities</b>	<ul style="list-style-type: none"><li>Restoring Parks &amp; Facilities</li><li>Increasing Access to Restrooms</li><li>Enhancing Life Safety &amp; Regulatory Compliance</li><li>Continuing to Fix it First</li></ul>	<b>\$12.0 M</b>
<b>Investing for the Future</b>	<ul style="list-style-type: none"><li>Responding to Climate Change</li><li>Building Community Capacity</li><li>Developing &amp; Enhancing Park Assets</li></ul>	<b>\$9.0 M</b>



# BPRC Recommendation

**We strongly urge the adoption of the full \$30 million investment.**

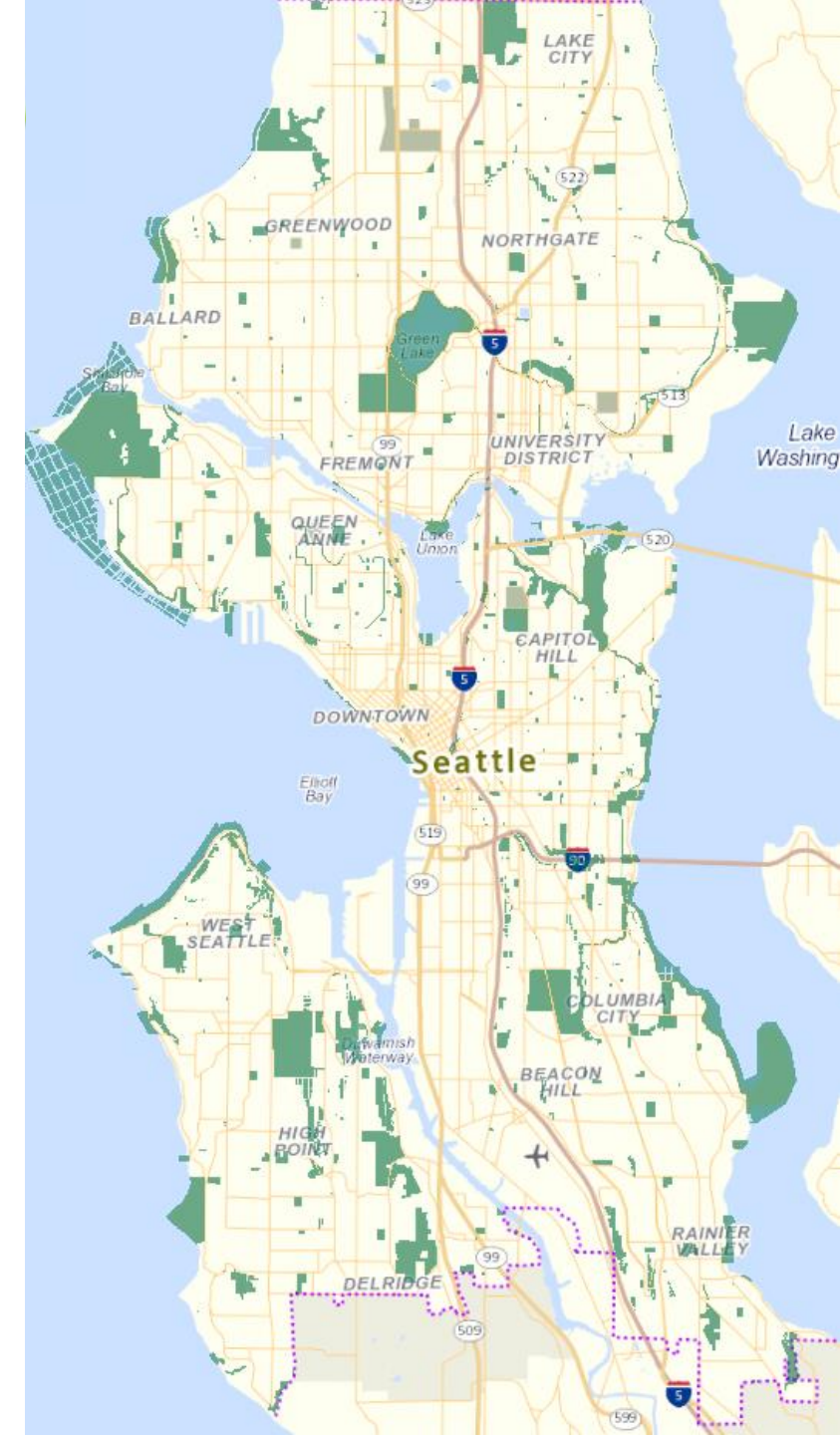
Throughout the pandemic and well before then, demands on the Parks and Recreation system have only grown. Our recommendation centers the following:

- ✓ A racial equity lens: targeting investments to benefit historically underserved communities;
- ✓ Voter-approved vision of the Park District: a mix of capital, operations and maintenance;
- ✓ Leveraging potential for grants, cost-sharing and other external funding;
- ✓ Looking for investments that have the greatest impacts at the lowest cost;
- ✓ Supporting innovative demonstration projects to pave the way for future funding;
- ✓ Increasing equitable engagement and working directly with diverse communities.



# Seattle's Parks and Recreation System

- **6,400+ acre** system of over **485+ parks**
- **Hundreds** of recreation & enrichment programs for kids, teens, adults, older adults, and people with disabilities
- **Wide range of amenities:** **24** full-service community centers, **2** specialty centers, **8** indoor and **2** outdoor pools, **200+** athletic fields, **120** miles of trails, **32** wading pools & spray parks, **14** off-leash areas, **3** environmental learning centers, **3** teen life centers, **4** golf courses, **131+** public restrooms, **150+** play areas, and much more!
- **Wide array of partnerships:** Seattle Public Schools, Woodland Park Zoo, Seattle Aquarium, Associated Recreation Council, volunteer & friends of groups, non-profit operators, and many more



# Thank you!

**Final Recommendation available at BPRC website:**

<https://www.seattle.gov/board-of-parks-and-recreation-commissioners/park-district-cycle-2-planning>

