

The background features a large, dark green monstera leaf on the right side. Overlaid on the leaf and the light blue background is a white silhouette of a car, viewed from the side. The car is positioned in the upper right quadrant of the image.

# Seattle's Green New Deal Oversight Board Meeting

August 19, 2024

# Scheduling – RSVPs Needed

- ☐ Reconvening the PPP Comm – fill out scheduling poll by tonight
- ☐ 9/12 – Retreat (evening social)
- ☐ 9/13 – Board business (all day)
- ☐ 9/19 – Lunch & Learn @ noon focused on insurance companies' role in the climate crisis
- ☐ 9/26, 10/3, 10/10 – Notetakers needed for MLK Labor Community Assemblies from 5:30-8:30pm
- ☐ 10/14 OR 10/28 – Rescheduling Oct GNDOB meeting
- ☐ (Coming soon) Councilmember Meet & Greet – will need responses ASAP



# EJ Fund – PLEASE SHARE

- OSE to release the EJ Fund application TOMORROW, 8/20
- \$250,000 available to support community-led projects that benefit frontline communities
- Eligible applicants can apply for a \$10k or \$25k grant
  - Tribes & tribal organizations of any size
  - Nonprofits & community groups with an average operating budget of \$500k or less for the current & previous fiscal years
- Applications will be accepted and reviewed on a rolling basis until the total funding is awarded or by 5pm (PT) on October 20, 2024, whichever comes first.
- TA consultants will be available to interested applicants at no cost
- More information here: [seattle.gov/environment/ejfund](https://seattle.gov/environment/ejfund)
- Virtual info sessions:
  - 8/27: noon-1pm (Spanish & English)
  - 9/9: 6-7pm (reach out to [Equityenviro@seattle.gov](mailto:Equityenviro@seattle.gov) to request language access & other accommodations by 9/5)



# GND Oversight Board Google Folder

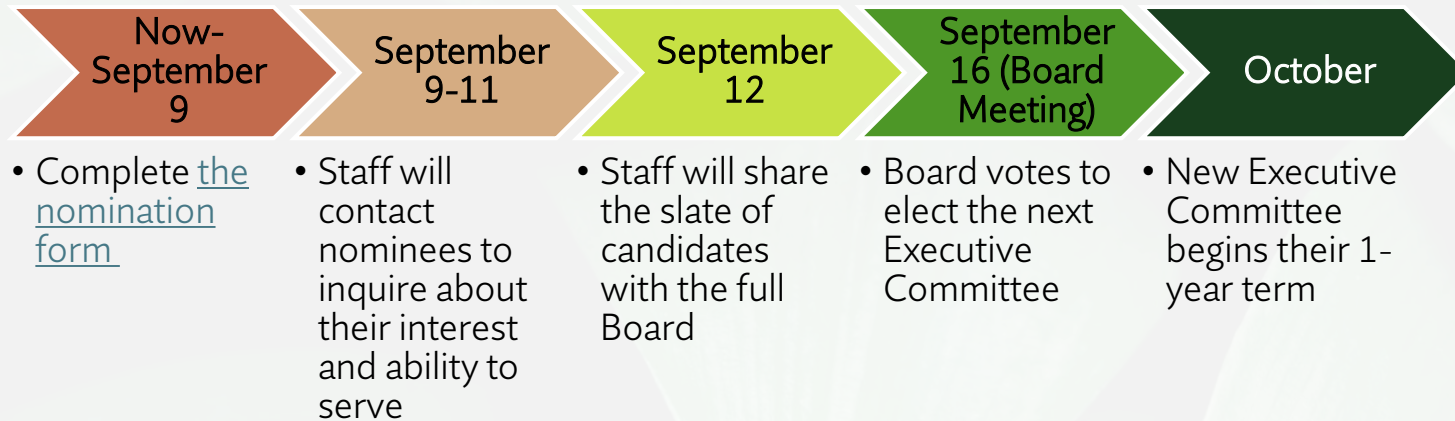
❑ Please bookmark/star [this folder](#)  
now

❑ Complete the [Board roster](#) ASAP

We will use the G Drive to:

- Collaborate on documents
- Share and store information
- Upload media

# Voting Process for Incoming Executive Committee



Review instructions on nomination form for more info, including Executive Committee roles & responsibilities

Nominate yourself or others

All Board members are eligible, except for Debolina who has reached her term limit

Extra stipend money for the additional responsibilities

# Community Assemblies

Faduma Fido

Aug 19, 2024

**PEOPLE'S  
ECONOMY**  
— LAB —

# People's Economy Lab (PEL)



The People's Economy Lab builds networks of leaders and advances projects that reshape our local economy towards one that is just, sustainable, and regenerative.

We envision a multitude of local, community-centered economies, rooted in democracy and collective self-determination, that are sustainable and equitable, and that create shared well-being.

# Assemblies: Types & Uses

**Assemblies** are participatory spaces where participants come together to learn, deliberate, navigate trade-offs, and collectively make decisions or public recommendations to influence the actions of either government or member-based community organizations.

## **Three Categories:**

1. Citizens Assemblies
2. Movement Assemblies
3. Community Assemblies



# Assembly Process



01 Welcome & intro



02 Learning



03 Deliberation



04 Drafting & presenting recommendations



# Assembly Anchor Role

**Assemblies** are organized by “**Assembly Anchors**,” which are “existing community-based organizations with pre-existing deep relationships and community buy-in that leads a community assembly effort” ([Just Futures](#)).

## Primary role of Assembly Anchors

- Connect with frontline community members.
- Guide conversations in a way that is organized, open, and structured.
- Facilitate decision-making practices that aim for collective agreement.

# Participatory & Collaborative Spaces



**Porto Alegre, Brazil**  
**Participatory Budgeting Assemblies**  
1990-2001  
Direct decision making



**Jackson, Mississippi**  
**People's Assembly**  
Mid-1990s to present  
Electoral co-governance  
and agenda setting



**Wisconsin Conservation Congress**  
Mid-1990s to present  
Advising an agency



**Ostbelgien Citizen Assemblies**  
2017 to present  
Legislative agenda setting  
and recommendations

# Focus for Upcoming Assemblies

## **Community Climate Resilience**

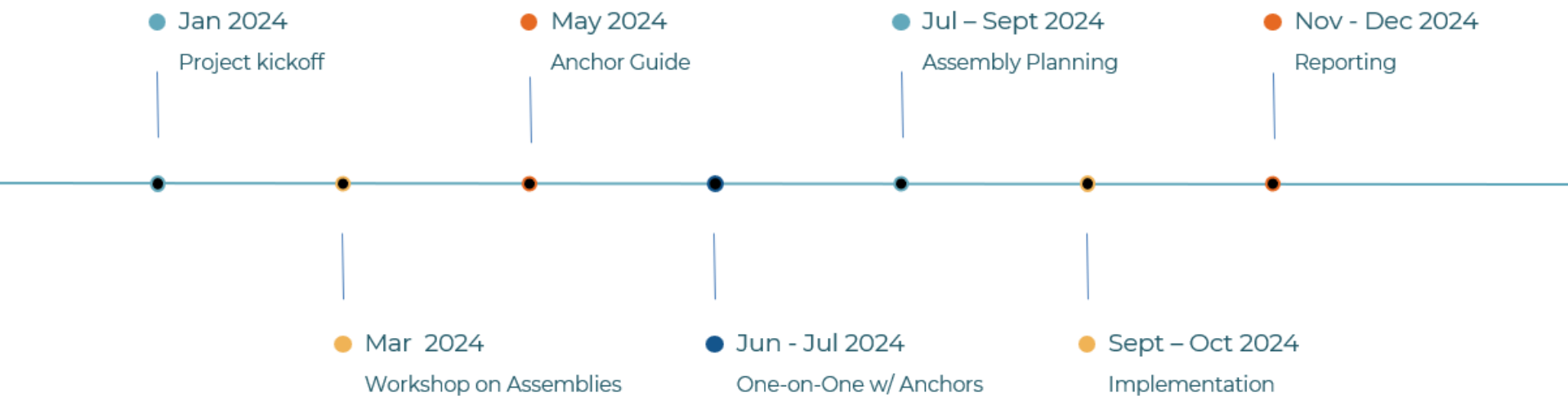
- How do we best support community-scale interventions and provide resources to cope and adapt to climate-related hazards and impacts?

## **Climate Workforce**

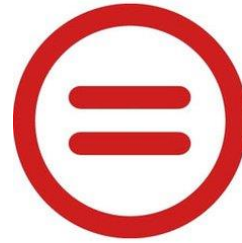
- How do we build an equitable clean energy economy, which includes building generational wealth among people who do not currently have ample access to wealth?
- How do we support workers whose work environments, health, and/or incomes are being negatively affected by climate-related hazards?



# Timeline



# Updates: Anchor Organizations



Urban League of  
Metropolitan Seattle

# Discussion

- Expectations on what specific outputs are we aiming to achieve?
  - Identifying the benchmarks and indicators of success (attendance, recommendations, feasibility, resources, adoption)
- Roles for board members during assemblies
  - Assisting with notetaking and data collection, volunteer for setup, clean-up, etc.
- What components should be included in the final report?
  - Specific elements that board members want