



Draft for Public Review

ONE SEATTLE PLAN

COMPREHENSIVE PLAN UPDATE

SUMMARY OVERVIEW

QORSHAHA ONE SEATTLE CUSBOONAYSIIINTA QORSHE DHAMAYSTIRAN - DULMARKA KOOBAN-

AF-SOOMAALI

SOMALI



Seattle
Office of Planning &
Community Development

QORSHUHU WAA KHARIIDAD-TUSMO

Qorshaha Guud waa khariidad ku saabsan halka iyo sida Seattle ay u kori doonto oo ay u maalgelin doonto bulshooyinka 20-ka sano ee soo socda iyo wixii ka dambeeya. Seattle waxay markii ugu dambeysay ka shaqaysay cusboonaysiinta Qorsheheeda Buuxa, *Seattle 2035*, ku dhawaad toban sano ka hor. Cusboonaysiintaan weyn, *Qorshaha One Seattle*, ayaa u dejinaya aragti cusub magaaladeena.



Marka ay dadkeenu ku dhawaadaan hal milyan 20-ka sano ee soo socda, waxaan wajaheynaa caqabado ku xiran awood-u-helidda guryaha, sinnaanta jinsiyadda, helitaanka fursadaha, iyo isbeddelka cimilada. Qaabilaankeena caqabadahaan ayaa qaabayn doona Seattle jiilal. Qorshahaani wuxuu dejinayaa yoolal macno leh wuxuuna soo bandhigayaa siyaasado cusub si magaaladu u noqoto mid sinnaan, lagu noolaan karo, waarta, iyo adkaysi u leh bulshada maanta iyo dadka mustaqbalka degi doona.

Qorshaha waxaa lagu wargeliyay ka qaybgalka ballaaran ee dadweynaha ee bulshooyinka kala duwan ee Seattle. Qorshuhu wuxuu la jaanqaadayaa sharciyada gobolka iyo deegaanka iyadoo wax laga qabanayo mowduucyo kala duwan oo muhiim ah sida koritaanka, isticmaalka dhulka, gaadiidka, guriyeynta, horumarinta dhaqaalaha, iyo ilaalinta bey'adda.

QORSHUHU WAXA UU MUDNAAN SIINAYAA AFAR TILLAABO OO MUHIIM AH

Guriyeynta & La-awoodi karo: Ku balaadhi fursadaha guryeynta magaalada oo dhan. Waxaan aragnaa magaalada leh guryo badan oo kala duwan oo loogu talagalay tirada qoyska, dakhliga, iyo dhaqamada ee kala duwan. Qorshahani wuxuu dhiirigelinayaa guryo badan oo meelo badan ah si loogu dhaqaaqo mustaqbalka halkaas oo guryuhu ku badan yihiin, culayska kharashka kiraynta ama lahaanshaha guri hoos u dhaco, dadkuna ay helaan xasilooni

Bulshada & Xaafadaha: Diirada saara koritaanka iyo maalgashiga bulshooyinka dhameystiran oo lagu socon karo. Bulshooyinka way horumaraan marka ay jiraan meelo la heli karo oo kobciya isku xidhka, badbaadada, iyo dareenka lahaanshaha. Qorshahani waxa uu taageerayaa xaafadaha dhaqaale ahaan firfircoon ee magaalada oo dhan iyada oo koritaan diirada la saarayo gaadiidka u dhow, oo ay ku jiraan tareenada fudud, adeegga baska tayada sare leh, iyo degmooyinka ganacsiga xaafadaha, si ay dadka deegaanka u daboolaan baahidooda maalinlaha ah ee agtooda iyaga oo aan u baahnayn baabuur. Qorshahani wuxuu qaadayaa tillaabooyin lagu kobcinayo xaafado badan oo lugeyn kara kuwaas oo soo dhawaynaya, la heli karo, iyo meelo ammaan ah oo qof kasta loogu talagalay meeshaasoo lagu kulmi karo kuna wadaagno dhaqamadeena kala duwan.

Sinnaanta & Fursada: Kor u qaad Seattle sinnaan badan inta aan koreyno. Qorshahani waxa uu keenayaa istaraatiijiyad cusub oo sinnaan ah oo ku saabsan sida Seattle ay u korayso mustaqbalka. Qorshuhu wuxuu qaadayaa tillaabooyin lagu wajahayo waxyeellada siyaasadihii hore, maalgashi la'aanta, iyo dhaqamada guryeynta ee takoorka ah, oo ay ku jiraan dib-u-dejinta iyo axdiyada xaddidaya jinsiyadda kuwaas oo horseeday barakicinta bulshooyinka BIPOC (caddaanka ahayn) iyo helitaanka lahaanshaha guriga oo xaddidan iyo dhisidda hantida jiilal ee degganayaashaan.

Cimilada & Joogteynta: la kulan caqabadaha isbeddelka cimilada, mustaqbal adkeysii leh. Qorshahani waxa uu soo bandhigayaa qayb cusub oo Cimilada iyo Bey'adda taas oo labanlaabaysa dedaalkayaga ku aaddan yaraynta raadkeena kaarboonka iyo in aan dhisno adkeysii bulshooyinka safka hore ee aadka ugu nugul saamaynta cimilada. Cunsurkaan waxaa ka mid ah xeelado lagu dhimayo wasakheynta kaarboon ilo badan wuxuuna kor u qaadaa tillaabooyin kala duwan si kor loogu qaado adkeysiga bulshooyinkayada iyo bey'adda dabiiciga ah ee ay khatar ku yihiin saameynta cimilada hadda iyo mustaqbalka.

QORSHUHU WUXUU AHMIYAD-SIIYAA KOBACA LOO SIMAN YAHAY

Istaraatiijiyada kobaca hadda jirta ee Seattle, Istaraatiijiyada Tuulada Magaalada, waxay xooga saartaa kobaca tiro xadidan oo xaafado ah ee Seattle gudaheeda. Istaraatiijiyadani waxay gacan ka geysatey abuurista xaafado is haysta, ee lagu socon karo, la isticmaali karo oo isku dhafan oo ku xiran gaadiidka, laakiin sidoo kale waxay la macno tahay in xaafado badan ay haystaan doorashooyin kooban ee guryaha la awoodi karo.

Istaraatiijiyadda kobaca cusub ee la soo jeediyay ayaa doonaysa in ay dejiso kobaca mustaqbalka iyo hormarinta guryaha la awoodo oo la kordhinayo tirada iyo kala duwanaanshaha fursadaha guryeynta ee xaafadaha magaalada oo dhan. Waxaa loogu talagalay in lagu yareeyo cadaadiska suuqa ee khatarta ku ah bulshooyin badan oo barakac ah. Ugu dambayntii, istaraatiijiyadu waxa ay dhistaa oo ay ballaadhinaysaa dedaalkayaga ku aaddan hormarinta xaafadaha la lugeyn karo, xaafado dhammaystiran ee ku wareegsan gaadiidka. Macluumaad dheeraad ah oo ku saabsan istaraatiijiyadda kobaca ayaa laga heli karaa dukumeentiga kooban ee Istaraatiijiyadda Kobaca.



Macluumaad dheeraad ah oo ku saabsan istaraatiijiyadda koritaanka la soo jeediyay ayaa laga heli karaa

Seattle.gov/OPCD/One-Seattle-Plan
Maps.Seattle.gov/OneSeattlePlan-EIS

KHARIIDADDA ISTICMAALKA DHULKA MUSTAQBALKA

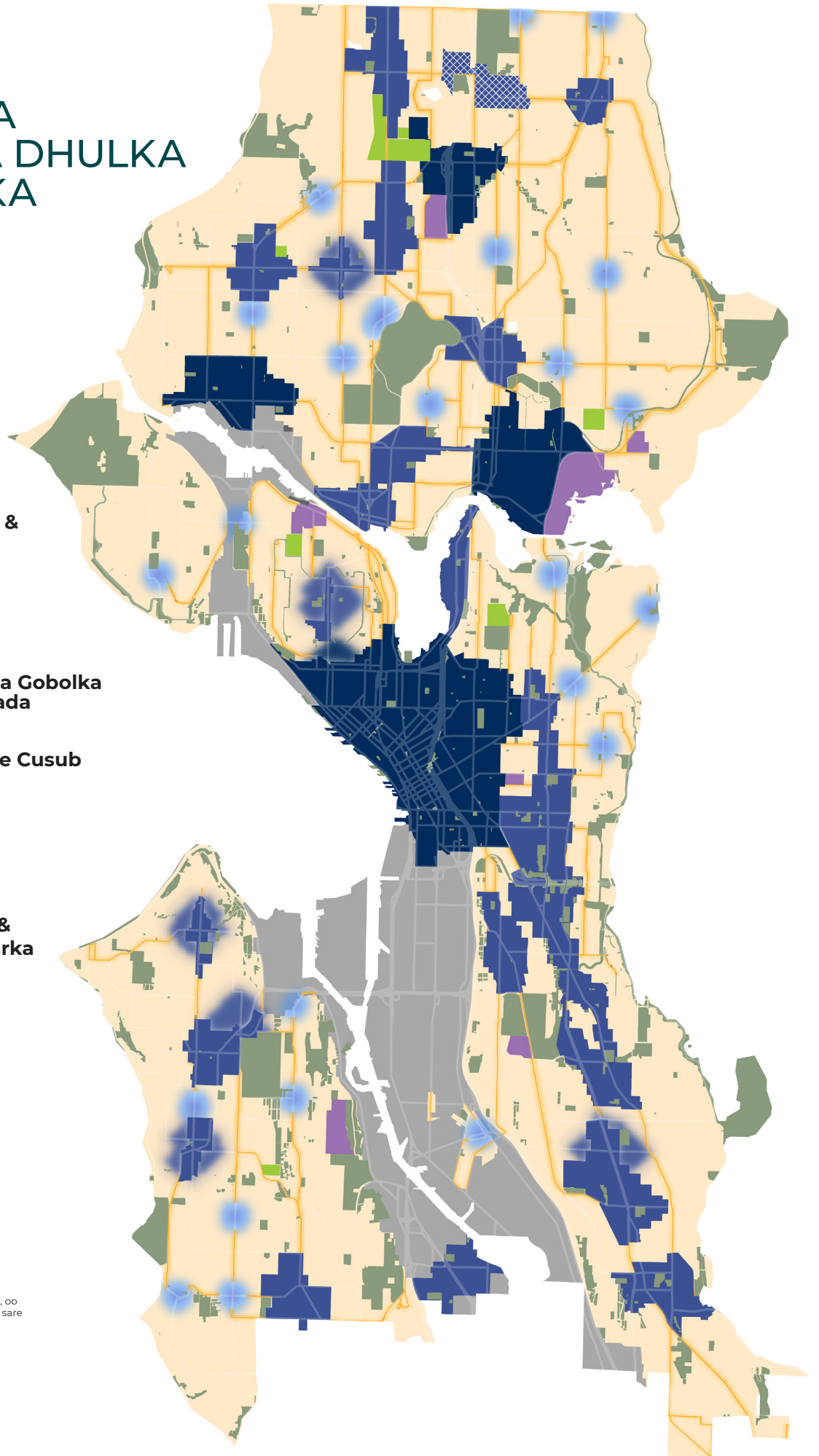
Noocyada Goobta

-  Xarunta Gobolka
-  Xarunta Magaalada
-  Xarunta Xaafada
-  Xarunta Warshadaha & Wax-soo-saarka
-  Xaafada Magaalada
-  La-ballaariyay Xarunta Gobolka ama Xarunta Magaalada
-  Xarunta Magaalada ee Cusub

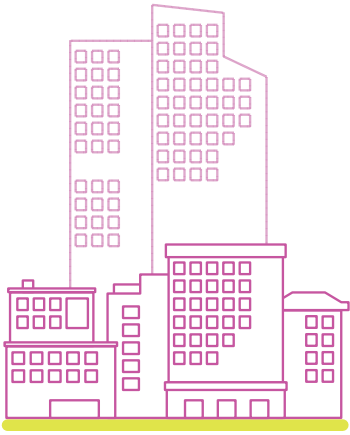
Goob kale

-  Wax-soo-saarka Ka-baxsan Warshadaha & Xarunta Wax-soo-saarka
-  Machad weyn
-  Beeraha Raaxada iyo Meel Banaan
-  Xabaalaha
-  Jidka gaadiidka dadweynaha ee soo noqnoqda

Shabakadda gaadiidka dadweynaha ee soo noqnoqda, kuwa jira iyo kuwa mustaqbalka, oo ay weheliyaan aagaynta guryaha cufnaanta sare ayaa la tixgelin doonaa



NOOCYADA GOOBTA EE KOBACA SEATTLE XEELADDA



Xarunta Gobolka



Xarunta Magaalada



Xarunta Xaafada



**Xaafada
Magaalada**



**Xarunta
Warshadaha &
Wax-soo-saarka**



Xarunta Gobolka *Regional Center*

Xarumaha Gobolka, oo hore loogu yeeri jiray Xarumaha Magaalada ee Qorshaha Dhameystiran ee Seattle 2035, ayaa ah xaafadaha ugu dadka badan. Waxay door muhiim ah ka matalaan gobolka, sababtoo ah guryo muhiim ah, xafiis, tafaariiq, goobo dhaqameed iyo madadaalo, iyo xarumaha waaweyn ee gaadiidka. Meelahani waxay ku habboon yihiin noocyada kala duwan ee horumarinta cufnaanta sare, oo ay ku jiraan dhismayaasha dhaadheer ee meelaha qaarkood. Istaratiijiyada waxaa ka mid ah sare u qaadida Ballard ilaa heerka Xarunta Gobolka.



Xarunta Magaalada *Urban Center*

Xarumaha Magaalada, oo hore loogu yeeri jiray Tuulooyinka Magaalada (Urban Villages), waa meelo isticmaal badan oo lagu lugeyn karo oo door muhiim ah ka matala magaalada oo dhan. Waa meelo ay tagaan dadka degan degmooyinka kala duwan ee Seattle sababtoo ah dukaamo, makhaayado, iyo ganacsiyo aya ku badan. Xarumaha magaaladu waxay ku habboon yihiin dhismooyin la dego iyo kuwo isku dhafan ilaa 7-12 dabaq ah oo xudunta ah, oo leh guryo yaryar iyo townhouses ku yaala hareeraha. Meelahan guud ahaan waa inay ku jiraan aagag u jira 2,000 feet, ama hal ilaa saddex baloog, oo ah aagga ganacsiga asaasiga ah ama nus mayl saldhigga tareenka fudud. Istaratiijiyada waxaa ku jira balaadhinta 6 xarumood oo hadda jira iyo xarun magaalo oo cusub oo ku taal saldhiga tareenka fudud ee NE 130th Street.



Xarunta Xaafada *Neighborhood Center*

Xarumo Xaafaduhu waa meelo leh kala-duwanaansho guryo kala duwan oo xuddun u ah degmada ganacsiga deegaanka iyo/ ama joogsiga gaadiidka waaweyn (sida RapidRide). Caadi ahaan waxay u adeegaan sida meelaha muhiimka ah ee xaafadaha dhexdooda, iyagoo leh dukaamo, adeegyo, dukaamada raashinka, makhaayadaha, iyo wax ka badan.

Goobahani waxay ku habboon yihiin dhismayaal la dego iyo kuwo isku dhafan oo ilaa 6 dabaq ah oo ku yaal dhismooyinka hoose iyo kuwa yaryar ee ku yaal hareeraha. Xarumahaan guud ahaan waa inay ku jiraan meelo 800 feet u jira xudunta.



Courtesy of Hybrid Architecture.

Xaafada Magaalada *Urban Neighborhood*

Xaafadaha Magaalooyinka waa meelo ka baxsan xarumaha ku haboon horumarinta degaanka. Waxay caadi ahaan ku jira noocyo kala duwan oo guryo ah oo ku dhex jira miisaan saddex dabaq ah, sida guryo go'an, laba-laaban, saddex, afar dabaq ah, iyo guryo cariish ah oo leh guryo dabaqyo ah iyo isticmaalka ganacsi ee meelaha la doortay sida hareeraha waddooyinka waaweyn ama u gudubka meelaha cufnaanta sare leh. Xaafadaha magaalooyinka ayaa sidoo kale bixiya fursado ganacsiyada guriga, dukaamada geesaha, iyo machadyada yaryar si ay ugu oggolaadaan dad badan inay socdaan, baaskiil wadaan, una cag-rogaan baahiyaha maalinlaha ah.



West Woodland Business Center, Ballard, WA.
Photo by Aaron Locke, BCRA.

Xarunta Warshadaha & Wax-soo-saarka *Manufacturing and Industrial Center (MIC)*

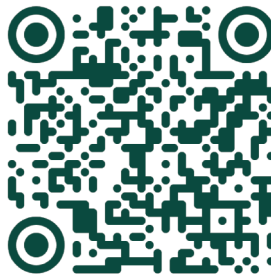
Xarunta Warshadaha & Wax-soo-saarka (MIC) waa goobo warshadeed oo urursan oo leh tafaariiq, xafiis, iyo hawlo deegaan oo kooban. Waa meelo muhiim u ah gobolka sababtoo ah joogitaanka ganacsiyada warshadaha ee baaxadda kala duwan iyo kaabayaasha gaadiidka sida dekedaha konteenarada, marinnada, iyo xarumaha tareenada.

Taladaada ayaa Qaabeyisa Qorshaha

Fikradda dadweynuhu waa muhiim marka aynu si wada jir ah uga shaqayno qaabaynta mustaqbalka Seattle. Si wadajir ah, waxaan u xaqiijin karnaa magaalo barwaaqo ah, loo dhan yahay oo adkeysii u leh dhammaan.

Waxaan rabnaa jawaab celintaada qiimaha leh si aan u hagaajino qorshahaan. Nagu soo biir adiga oo si shaqsi ah iyo khadka uga qeybgalaya fursadaha.

Engage.OneSeattlePlan.com



Dabool kor ilaa hoos: Sawirka skyline ee Seattle ee Patty Zavala ee Unsplash.com. Dadka ku nasanaya kafateeriyada laamiga ee Pioneer Square, sawirka waxaa leh OPCD.

Xafiiska Qorshaynta iyo Horumarinta Bulshada (OPCD) wuxuu dejiyaa siyaasado iyo qorshayaal mustaqbal loo siman yahay oo waara. Waxaan iskaashi la sameynaa xaafadaha, ganacsiyada, wakaaladaha iyo kuwa kale si aan u keeno isbedel wanaagsan iyo isku dubaridka maalgashiga bulshooyinka Seattle.



Seattle
Office of Planning &
Community Development

Magaalada Seattle

Xafiiska Qorshaynta & Horumarinta Bulshada

(206) 386-1010
OPCD@Seattle.gov
Seattle.gov/OPCD

Twitter.com/SeattleOPCD
Facebook.com/SeattleOPCD
Instagram.com/SeattleOPCD
DailyPlanIt.Seattle.gov

Seattle City Hall
600 Fourth Ave, Floor 5
Seattle, WA 98104
Boostada: PO Box 94788, Seattle, WA 98124-7088

Turjumaada luuqadda, tarjumaadda iyo caawinta ayaa diyaar ah.

Language interpretation, translations and accommodation are available.

提供語言口譯、筆譯與便利服務。

Están disponibles los servicios de interpretación, traducción y adaptaciones.

Có sẵn dịch vụ phiên dịch, biên dịch ngôn ngữ và các biện pháp điều chỉnh.

ድንቁ የማስተርጎም፣ የመተርጎምና የመስተንግዶ አገልግሎቶች ይቀርባሉ።

언어 통역, 번역 및 편의사항이 제공됩니다.

Mayroon kaming pasalita at pasulat na pagsasalín at tulong sa wika.

La xiriir Seferiana.Day@Seattle.gov, (206) 482-2332.