

An aerial photograph of a residential neighborhood. A paved road runs diagonally across the frame. To the left of the road, there is a grassy area and a utility structure. To the right, there are several houses with grey roofs and concrete driveways. A dark car is parked on the road. In the background, there are more houses, trees, and a larger road with a bridge or overpass.

# Reconnect South Park Community Vision Plan RFP

Pre-Submittal Conference



# Introductions

Please type your name and email into the chat. If you are looking for partners, please also enter your desired role in the chat.



# Agenda

- 1 project background
- 2 scope of work
- 3 submittal requirements and selection process
- 4 questions

# Project Background



# South Park Context





14TH AVE S



DUMAMISH VALLEY YOUTH CORPS



RESISTENCIA COFFEE



LUCHA LIBRE



DUMAMISH VALLEY YOUTH CORPS

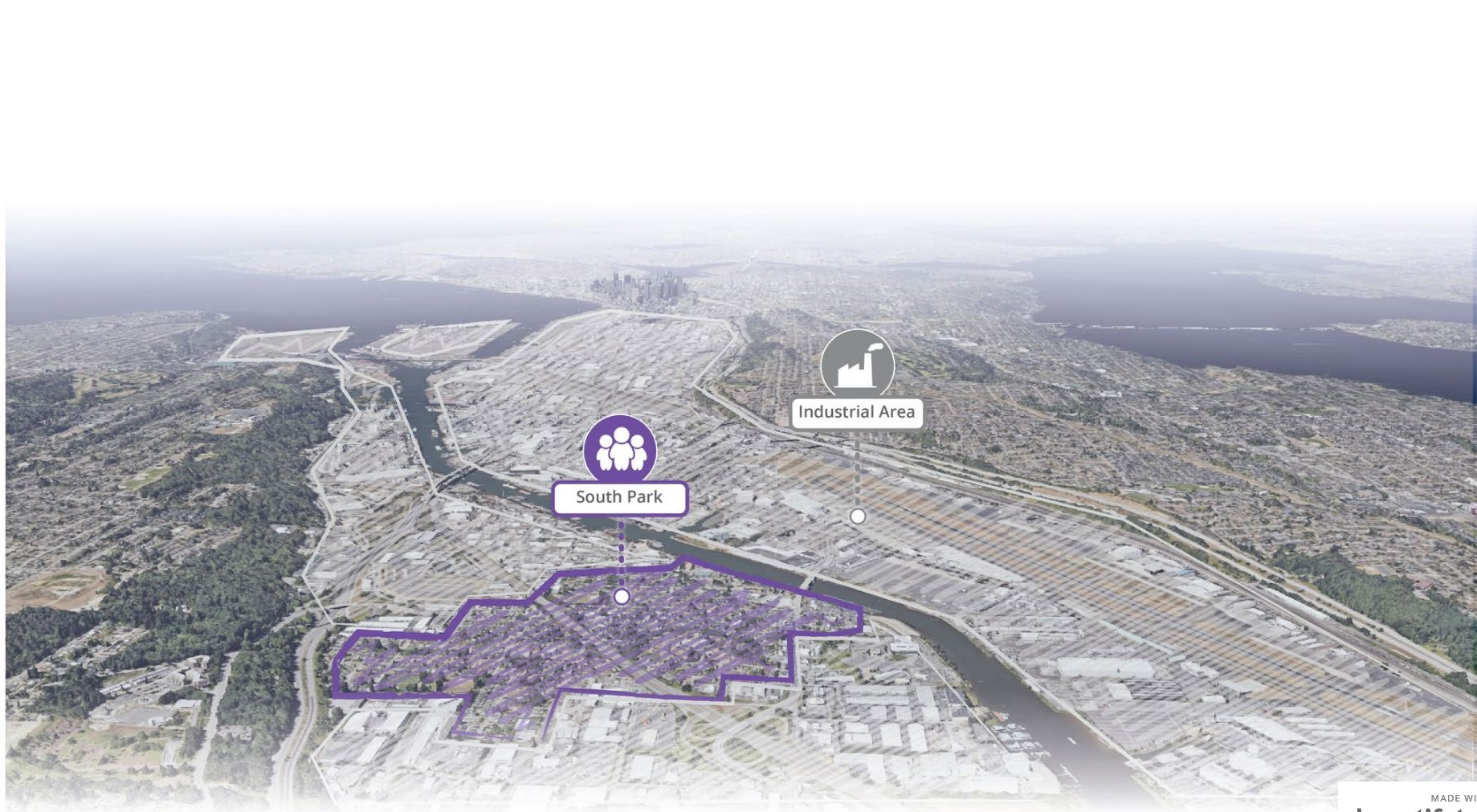


FIESTAS PATRIAS PARADE

South Park is a thriving, well-connected, and active community.

But South Park also faces many environmental challenges.





South Park

Industrial Area





  
SR 509

  
South Park

  
SR 99

  
Industrial Area

  
Interstate 5



Duwamish River  
Superfund Site



Industrial Area



South Park



SR 509



Interstate 5



SR 99



The cumulative impacts of these environmental burdens result in a **13 year** lower life expectancy for South Park residents compared with other Seattle neighborhoods.



Living next to highways has been shown to cause many adverse health outcomes, particularly for youth and the elderly.

These include:

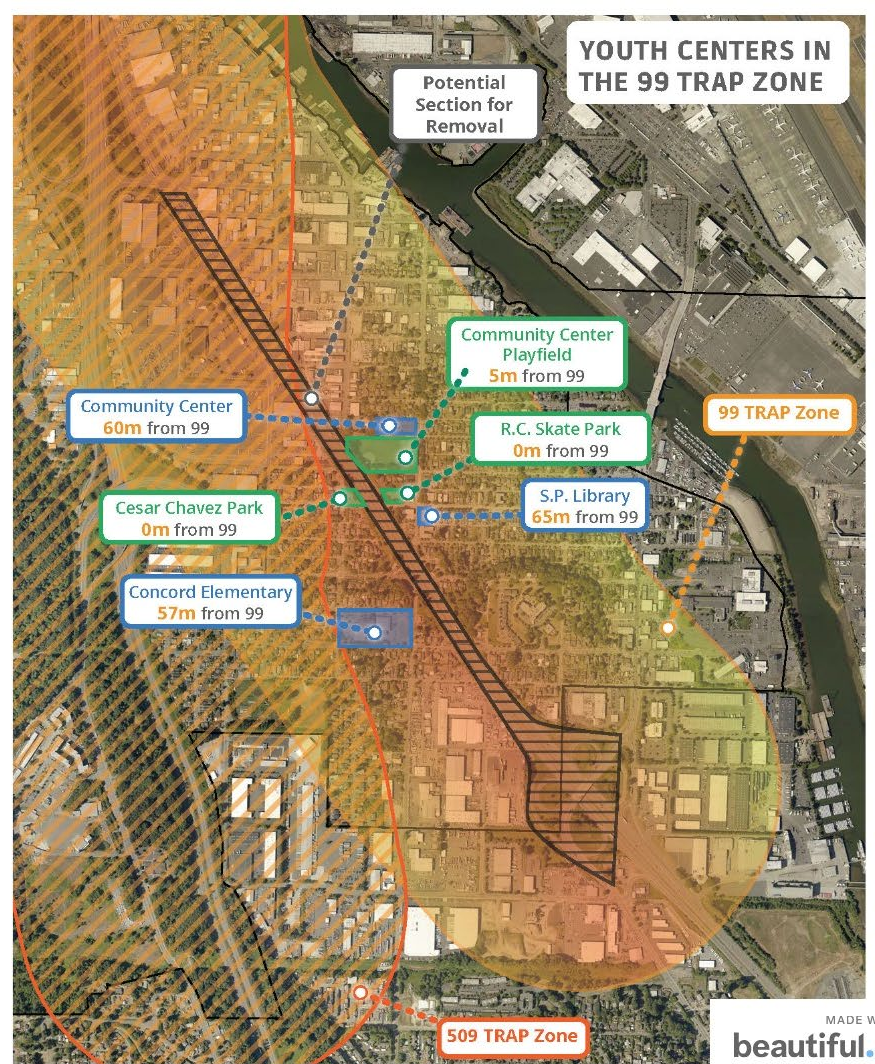
- Asthma
- Decreased lung function
- Cardiovascular disease
- Adverse birth outcomes
- Childhood cancer
- Depression




Traffic-Related Air Pollution (TRAP) is shown to cause health problems for those living within 500 meters of a highway.

**Most places where South Park youth gather and spend their time, such as the elementary school, library, and community center are directly adjacent to Highway 99.**

Most South Park residences are within the Highway 99 TRAP zone, and many people are impacted by the SR 509 TRAP zone as well.



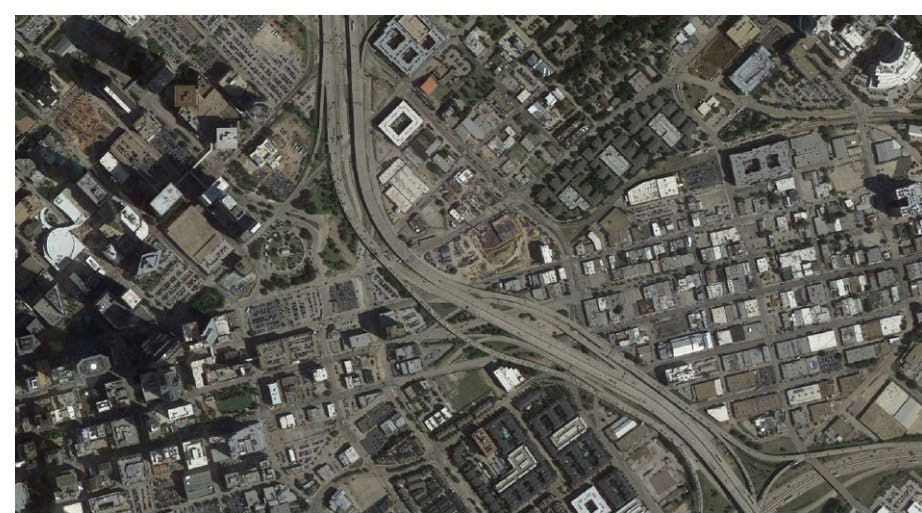


Getting across the highway is also dangerous, and causes many safety concerns.

Youth can often be seen running across the highway to avoid the “scary” trail.

# National Context





**There's a growing movement  
to undo the damage  
of urban highways.**



# Many organized efforts are underway across the U.S. advocating for highway removal.

THIS MOVEMENT HAS BEEN GETTING INCREASED ATTENTION FROM THE PRESS AND ELECTED LEADERS.

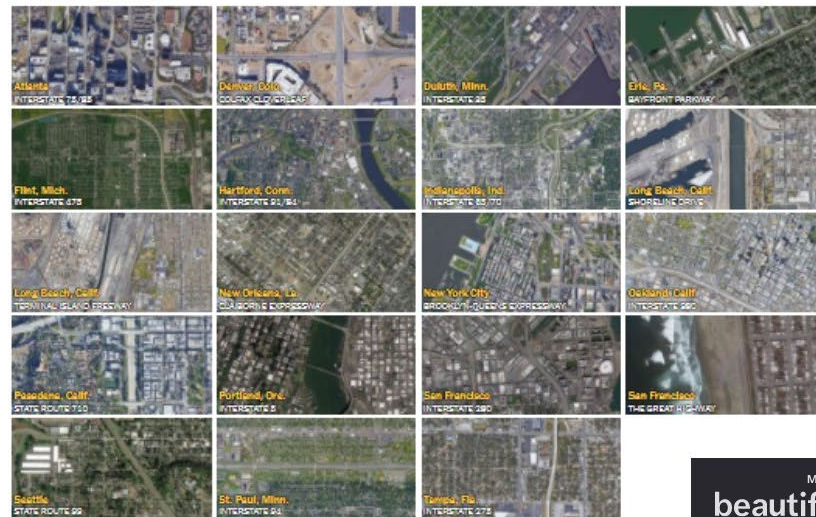
## Committed to removing highway or section



## Removal under official study



## Removal plan proposed



# The Emerging Language of Highway Removals

## From Urban Renewal to Highway Removal

Advocates — and planners — are pushing to tear down the freeways that divided and bulldozed neighborhoods.



The six lane Inner Loop Highway that had for decades divided the eastern part of Rochester, New York, was removed and replaced in 2018 with new complete streets. Wikimedia photo by AIP3745.



## Can Removing Highways Fix America's Cities?

By Nadja Popovich, Josh Williams and Denise Lu | May 27, 2021

ROCHESTER, N.Y. — Built in the 1950s to speed suburban commuters to and from downtown, Rochester's Inner Loop destroyed hundreds of homes and businesses, replacing them with a broad, concrete trench that separated downtown from the rest of the city.

Now, the city is looking to repair the damage. It started by filling in a nearly-mile-long section of the sunken road, slowly stitching a neighborhood back together. Today, visitors of the Inner Loop's eastern segment would hardly know a highway once ran beneath their feet.

As midcentury highways reach the end of their life spans, cities across the country are having to choose whether to rebuild or reconsider them. And a growing number, like Rochester, are choosing to take them down.

In order to accommodate cars and commuters, many cities “basically destroyed themselves,” said Norman Garrick, a

Bring 'em Down

## Cities around the country explore removing elevated highways with federal funding

By Edward Goode • June 1, 2021 • Editor's Pick, Feature, National, Transportation, Urbanism



## How Highway Removal Can Benefit Cities

Cities across the country are reevaluating the impacts of major highway on neighborhoods and looking for ways to revitalize and reconnect communities.

June 1, 2021, 7:00 AM PDT

By Diana Ionescu [@aworkoffiction](#)



## Can Biden's Plan to Remove Urban Highways Improve the Health of American Cities?

President Joe Biden's infrastructure plan aims to tear down urban freeways that bisect cities and displace non-white residents. But reversing the damage done by such projects can be complicated, advocates say.

By Kaiser Health News | July 14, 2021, at 12:08 p.m.

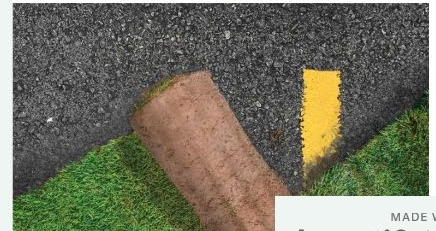


## If They Can Tear Down This Highway in Texas... Yes, Texas!

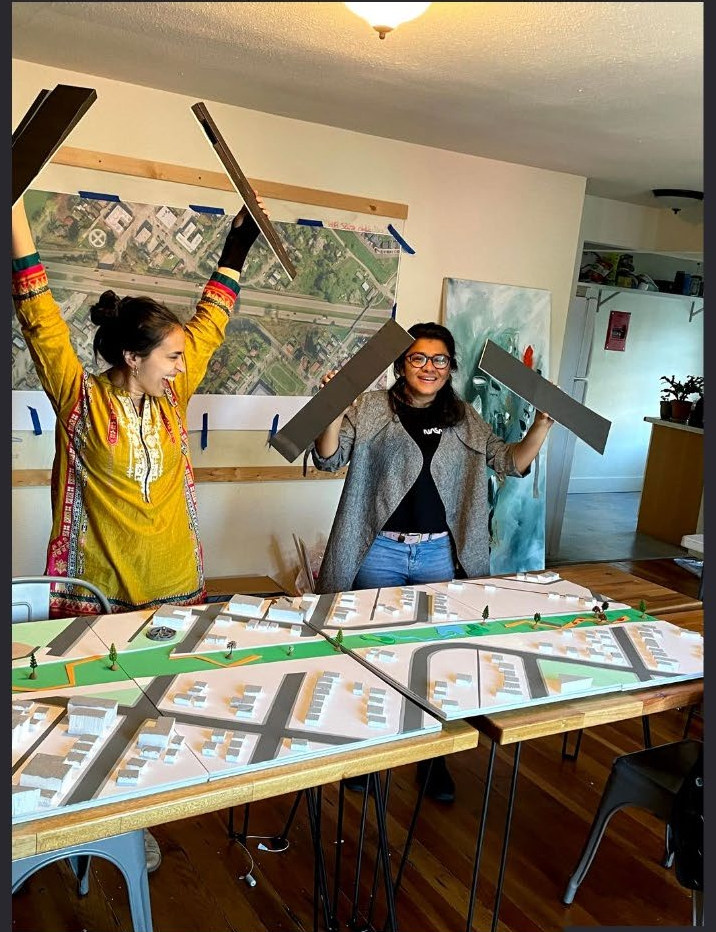
Texas planned to spend \$25 billion widening highways to relieve congestion. But a movement to tear them down instead is growing in influence—even here in the Lone Star State.

By Megan Kimble

JULY 12, 2021



# Engagement Scope



# Project Objectives

- **The overall project goal is to understand possible impacts and community preferences regarding the potential removal or restructuring of State Route 99 through South Park.**
  - Conduct engagement in order to develop a Community Vision Plan and to guide the technical studies.
  - Focus on those most often underrepresented in decision-making processes.
  - Build partnerships, develop and distribute project communications, and co-develop an Equitable Development Plan.

# SCOPE OF WORK

- Engagement and Partnerships

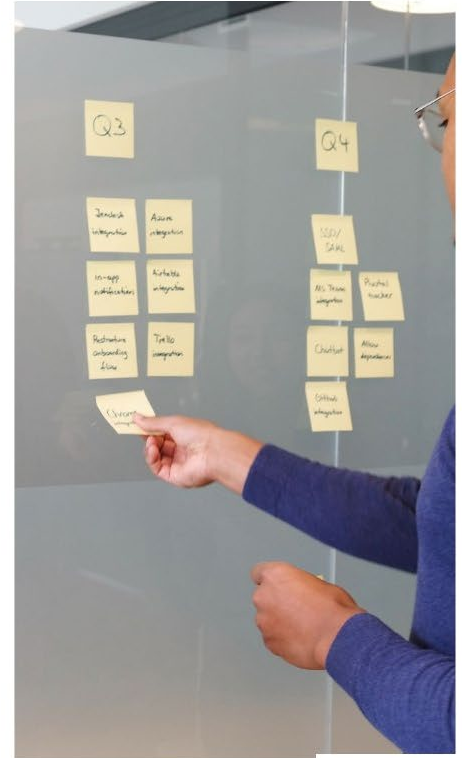
- Develop and implement a plan for the engagement and visioning process
- Guide technical studies with community-defined objectives
- Create and maintain partnerships

- Media, Communications, and Coordination

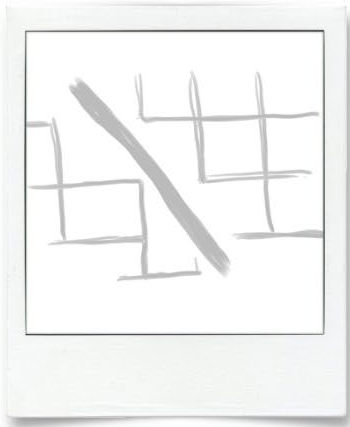
- Develop and implement a media and communications plan.
- Coordinate with other major engagement efforts

- Community Vision Plan and Equitable Development Plan

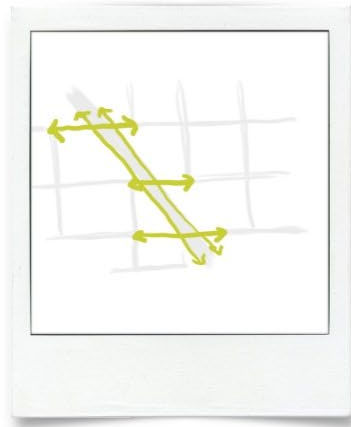
- Determine a Community-Selected Alternative based on technical studies and community input
- Create a Community Vision Plan
- Create an Equitable Development Plan



# Potential Alternatives



## Keep current conditions



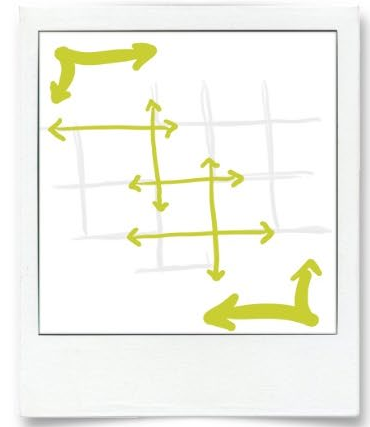
## Redesign

Add intersections, mitigate noise and air pollution, and add multimodal infrastructure



## Underground the highway

Create a tunnel under South Park and move traffic underground



## Remove and reroute

Remove the South Park segment of SR-99 and reroute traffic to other N-S corridors

# Who needs to be engaged

- **Those who are often underrepresented in decision-making**

- former residents who have been displaced
- BIPOC residents and workers and BIPOC-led organizations
- people with low English language proficiency
- youth
- people with low access to technology
- people with other marginalized identities

- **Shipping and Freight**

- Port of Seattle and NW Seaport Alliance
- Truck drivers

- **Businesses and Workers**

- Retail and small businesses
- Industrial businesses
- Unions

- **Residents**

- **Tribes**

- **Other Organizations**

- Community-based Organizations
- Community-serving institutions (health care, education, etc)
- Regional and national organizations working toward related objectives

# Proposed Timeline





# Submittal Requirements and Selection Process



MADE WITH


beautiful.ai

# Minimum Qualifications

Lead applicants must be neighborhood-based organizations that are active in the Duwamish Valley area of King County, WA (South Park, Georgetown, and nearby neighborhoods).



# Submittal Checklist

- 
- ✓ Consultant Questionnaire
  - ✓ Proof of Legal Business Name (if applicable)
  - ✓ Minimum Qualifications
  - ✓ Cost and Pricing
  - ✓ Non-Disclosure Agreement form(s), signed (if applicable)
  - ✓ Optional - Letter of Interest
- ✓ Proposal Response
    - Approach to the Scope of Work
    - Questions:
      - How do you plan to gather input and center the narratives of people who are often underrepresented in decision-making?
      - How do you intend to build resources, capacity, and power for individuals and organizations with less current access?
      - What strategies will you use to engage youth and/or young adults in this project?
      - How will you address conflicts that arise during the engagement process?

# Scoring

A panel of community members will review proposals and make a selection recommendation to the City based on the criteria below.

	Total Possible Points
Experience & Qualifications	250
Proposal Response: Approach to Scope of Work	250
Proposal Response: Question 1	100
Proposal Response: Question 2	100
Proposal Response: Question 3	50
Proposal Response: Question 4	50
Interviews	100
Cost Proposal	100
<b>Grand Total</b>	<b>1,000</b>

**Questions?**

