



North Aurora Community Action Plan Event Feedback Summaries For Spring 2026 Pop-In Party Events



Figure 1 Three attendees work with City staff at the Bitter Lake Community Center event to share their ideas for North Aurora by filling in sticky notes and placing them on a printed map of the study areas

Overview

As part of the North Aurora Community Action Plan and the North Aurora Initiative, the Office of Planning and Community Development (OPCD) and partner organizations hosted two “Community Connections Pop-In Party” outreach events in spring 2026, bringing together residents, businesses, and community members along the corridor. Each event featured engagement tables to inform the Community Action Plan. OPCD led tables focusing on community safety and community visioning, while a group of Master of Urban Planning Students from the University of Washington shared conceptual projects focusing on mobility and placemaking. A summary of community feedback, which is being used to guide the Community Action Plan, is covered below.



Figure 2 Advertising the North Aurora Initiative Pop-In Party Community Connections occurring over two dates, one at Robert Eagle Staff Middle School on Wednesday, May 27 from 5 to 7:30 PM and one at Bitter Lake Community Center Saturday, June 6, from 11 AM to 1:30 PM.

Community Visioning

At the community visioning table, community members were invited to share their hopes and concerns for the future of North Aurora through comment cards and a community mapping exercise. Both events also featured live illustration by artist Natalie Dupille, who captured community members' visioning in real time.



Figure 3 The OPCD Community Visioning Table with staff and the live artist working with attendees to fill in comment cards while the live sketch is being projected in the background

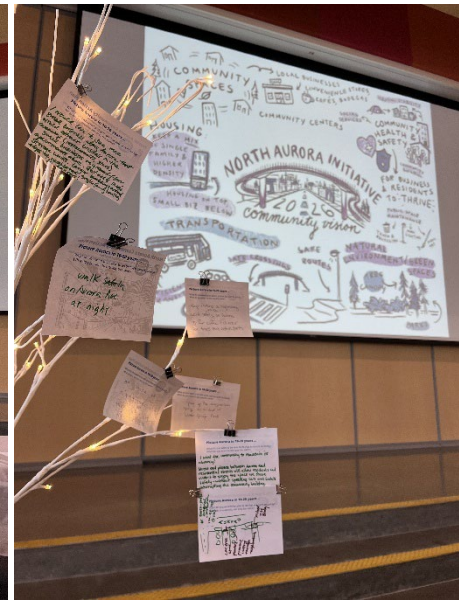


Figure 4 Community visioning comment cards hanging on a tree while the live sketch is projected in the background

Comment Cards

Attendees were invited to respond to the prompt “Picture Aurora in 10 – 20 years ...” on handwritten comment cards, sharing what they want to be able to do that they can’t today, and what they want to see stay the same. We collected 34 written responses across the two events.

What We Heard

- **Safety in public spaces:** attendees want Aurora to feel safe to walk at night and to send children to the bus stop independently.
 - “What I want to do [that I can’t do today] is to be able send my child to a bus stop on Aurora Ave by himself and feel that he can do it safely.”
- **Walkability and pedestrian access:** attendees would like to see connected sidewalks, pedestrian-friendly street designs, safer crossings, and improved east-west connections. Multiple attendees noted the current lack of sidewalk on the west side of the corridor.

- “Currently there is no sidewalk on the west side, less on the east side”
- **Transportation and transit:** attendees expressed support for Aurora as a public transit hub and interest in traffic calming in neighborhoods.
- **Greenery and open space:** attendees called for more greenery, trees, and plantings along the corridor. Attendees identified Fremont Ave as a street to focus efforts on.
- **Local business and economic development:** attendees value and want more small businesses, neighborhood retail, restaurants, and ground-floor commercial uses that draw activity. On the map, participants also noted the presence of beloved local businesses as community assets.
 - “I want to be able to go to a glass/mirror store, an Asian market, a Mexican restaurant and a tire store.”
 - “I would love to see more small businesses on the ground floor of new apartment buildings.”
- **Land use and urban form:** the community prefers smaller-scale, human-scale development, and noted that existing large storage facilities pose a challenge to walkability and active street life.
 - “More human-scale developments along the corridor. The current wide streets and big block commercial are not inviting people to gather/stay.”
- **Community spaces and Identity:** attendees expressed a desire for community centers, gathering places, plazas, and events. Participants expressed a desire for visual improvement of Aurora and a stronger sense of place.
 - “Street end plazas between Aurora and residential streets will allow residents and visitors to enjoy the space we share safely, without speeding cars and bullets interrupting the community building.”
 - “Walkable community center with local shop at Oak Tree Village”

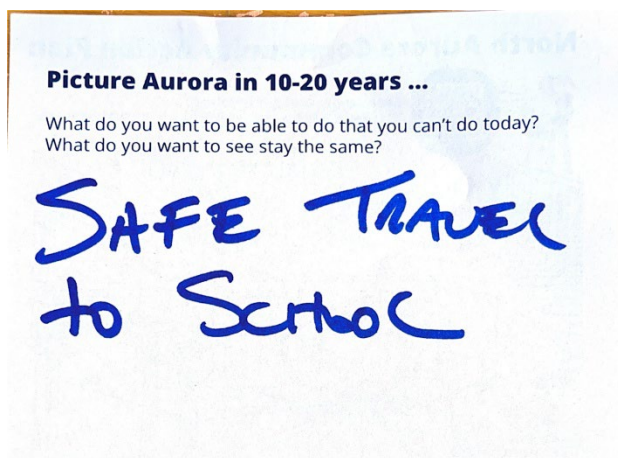


Figure 5 A scanned comment card in which an attendee wrote “Safe travel to School”

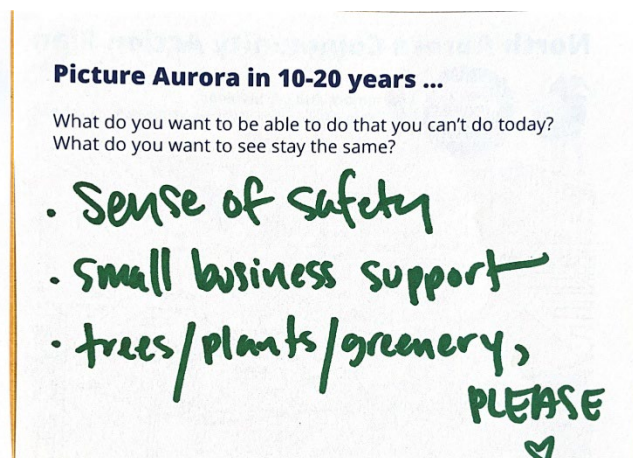


Figure 6 A scanned comment card in which an attendee wrote “Sense of Safety. Small Business support. Trees/plants/greener. PLEASE”

Community Mapping

Participants also used sticky notes to mark the map of the North Aurora corridor across the study area from N 80th St to N 145th St, shown in Figure 7, identifying favorite places and community assets, opportunities and ideas for the future, and challenges or concerns.

What We Heard

Favorite places and community assets:

- Schools and community centers: Bitter Lake Community Center & Playground; Haller Lake Community Club; Broadview-Thompson K-8 School
- Unique small businesses: Baseball card shop; retro videogame stores; family-owned retailers
- Affordable housing, including senior housing independent living at N 125th St and Aurora Ave N
- Trails and bike lanes: Interurban multi-use trail, N 83rd St neighborhood Greenway

Challenges and concerns:

- Neighborhood impacts from Aurora Ave N: Motels impacting pedestrian traffic; Discourage big-box retail at N 115th St and Aurora Ave N.
- Safety: Sunken areas and abandoned concrete at N 130th St and Aurora Ave N; discourage after-midnight businesses at N 105th St and Aurora Ave N.

Opportunities and ideas for the future:

- Use parking and underutilized areas for greenspace and community gathering: plazas at Oak Tree Village, at retail centers in Bitter Lake, at N 125th St and Aurora Ave N.
- Lighting, sidewalk repair, and bus stop access: Aurora Ave N and N 90th St; between N 105th St and N 125th St; between N 130th St and N 137th St.
- Additional parks and greenspaces, At Haller Lake; near N 104th St
- Community activities: Senior and social activities at Bitter Lake Community Center
- Placemaking: A gateway to Seattle at N 145th St and Aurora Ave N
- Future development: Ways to address big lots and corner transitions alongside neighborhoods

Figure 7 Community map showing sticky notes and the extent of the North Aurora Initiative study area. The full results of which are described in the previous section

COMMUNITY MAPPING

NORTH AURORA COMMUNITY ACTION PLAN

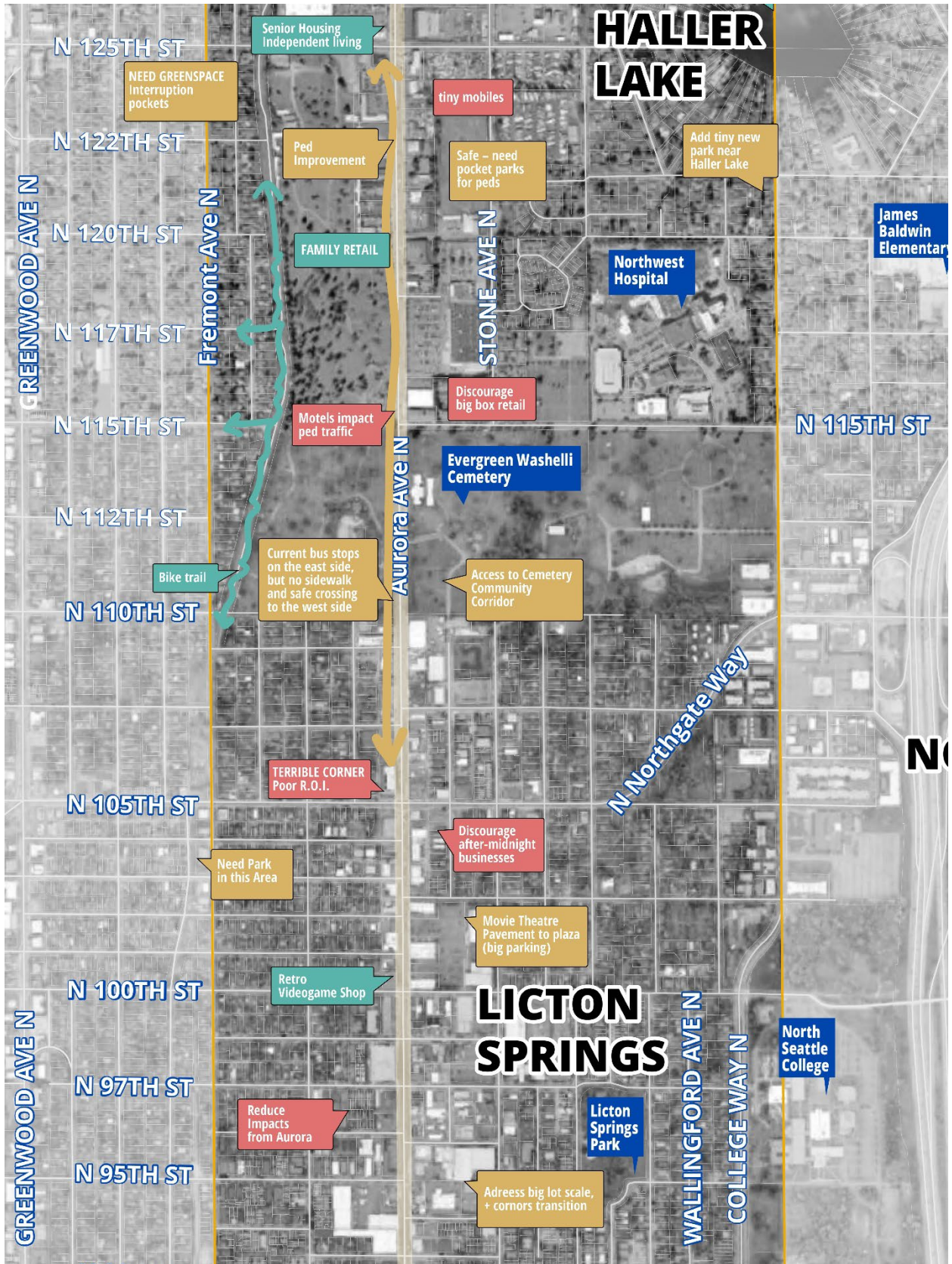
Tell Us What You Think

- Mark your favorite places in N Aurora
- What opportunities or ideas would you like to see here?
- What challenges or concerns should we know about?

Write your thoughts on a sticky note and place it on the map.

- Favourite places
- Opportunities or ideas
- Challenges or concerns
- Study Area







Community Safety Table

At our North Aurora Initiative outreach events in spring of 2026, many of the attendees took the opportunity to provide their thoughts on community safety to City of Seattle staff representing the Office of Planning and Community Development and the Seattle Police Department.

Display boards asked community members three questions:

1. What makes you feel safe in North Aurora? What's working well?
2. What are the *challenges* to feeling safe in North Aurora? What isn't working?
3. What *would* make you feel *safer* in North Aurora? What are the solutions?



Figure 8 Four Attendees talk with City staff in front of the community safety boards at the Robert Eagle Staff Middle School event. The community safety boards have various sticky notes pasted onto them, on which attendees have provided their thoughts and feedback.

What We Heard

Each board included community safety topics as prompts, and participants placed sticky notes with their thoughts and suggestions.

Community Safety Topic	What we heard
Violence Interrupter Programs	<ul style="list-style-type: none">• Suggestion for coordination with organizations to work on violence intervention• Opportunity to interrupt gun and sex trafficking-related violence
Law Enforcement	<ul style="list-style-type: none">• Requests and support for law enforcement interventions• Some residents expressed support for specific laws and prosecutions, including Stay Out of Areas of Prostitution (SOAP) and Stay Out of Drug Areas (SODA) laws

	<ul style="list-style-type: none"> • Some attendees critiqued responsive policing and asked for more active patrols • Some expressed concerns of temporary interventions that do not address root-causes of violence and crime • Residents, business owners, and workers shared personal stories of being confronted with gun violence, prostitution, and issues around encampments • Some expressed opposition to additional Seattle Police Department presence and surveillance cameras
Physical Environment	<ul style="list-style-type: none"> • Support for public-space amenities to make streets more welcoming, including lighting, garbage cans, greenery, and public restrooms • Challenges include vacant or inactive properties or parking lots, limited pedestrian lighting, litter, and graffiti • Ideas like street end plazas or closures at Aurora
Transportation Safety	<ul style="list-style-type: none"> • Support for additional safe crossings and ways to reduce cut-through traffic in neighborhoods • Challenges like disregard for traffic laws, dirty bus stops • Existing bus lanes and bike lanes help feelings of safety
Social Services	<ul style="list-style-type: none"> • Varying suggestions on commercial sexual exploitation on the corridor, including more prosecutions, social service outreach, or legalization • Support for additional resources for social services and outreach
Community Building	<ul style="list-style-type: none"> • Knowing neighbors helps the sense of safety • Community bulletin boards, whether in-person or created in mobile applications, help improve the feeling of safety • Suggest more gathering spaces, private and public • Activation, including active businesses and opportunities for neighborhood nights-out or neighborhood parties
Housing Stability	<ul style="list-style-type: none"> • Support for additional housing opportunities • Some issues at specific supportive, transitional, or homelessness housing sites, including depth of support • Neighborhood stewardship partnerships with new low-income housing or emergency shelter and neighbors • Hope to balance housing and limited green space
Behavioral Health	<ul style="list-style-type: none"> • Bus stops are a site where people often encounter people in mental health crises • Support for expanding behavioral health interventions, and neighborhood de-escalation trainings

University of Washington Master of Urban Planning Students: Mobility and Placemaking

The Master of Urban Planning Program at the University of Washington participated in a studio course (URBAN 507) alongside the North Aurora Initiative. The studio split into two groups, Mobility and Placemaking, and came up with their own ideas for interventions around the North Aurora Initiative study area. At the events, students collected community feedback on the ideas they presented. Students shared their final report outs with OPCD, summarized here. A student also provided free bicycle tune-ups to draw interest in their table.

Mobility:

The studio mobility team aimed to gather feedback on its projects, understand how residents move through their neighborhoods (and the challenges and opportunities involved), and facilitate open-ended conversations about improving mobility in the North Aurora area.

The Studio Developed:

1. **Route-mapping map.** A 5-foot map on which residents drew their route to the event. Blue for walking, green for cycling, red for transit, brown for driving. The map helped to visualize how residents move and identify gaps while sparking conversation.
2. **Project poster boards and handouts.** Large-format maps visualizing potential projects that could be implemented with space for sticky-note comments, plus 8.5-by-11-inch handouts reviewing the visioning work.
 - a. The Licton Springs event presented visioning of public bike and pedestrian routes through Evergreen-Washelli Cemetery, which is already open to the public but would formalize a north-south bike route on the east side of the corridor, as well as proposed improvements to the Fremont Avenue greenway by implementing targeted actions including filling sidewalk gaps, installing ADA accessible curb ramps, and adjusting the placement of existing street furniture.
 - b. The Bitter Lake Event presented visioning of public bike and pedestrian routes through Evergreen-Washelli and a proposal to change Roosevelt Way N between from an arterial road to a neighborhood corridor, which would include opportunities through healthy street designations or potential street closures to connect people biking and walking directly to the N 130th St Pinehurst Link light rail station.

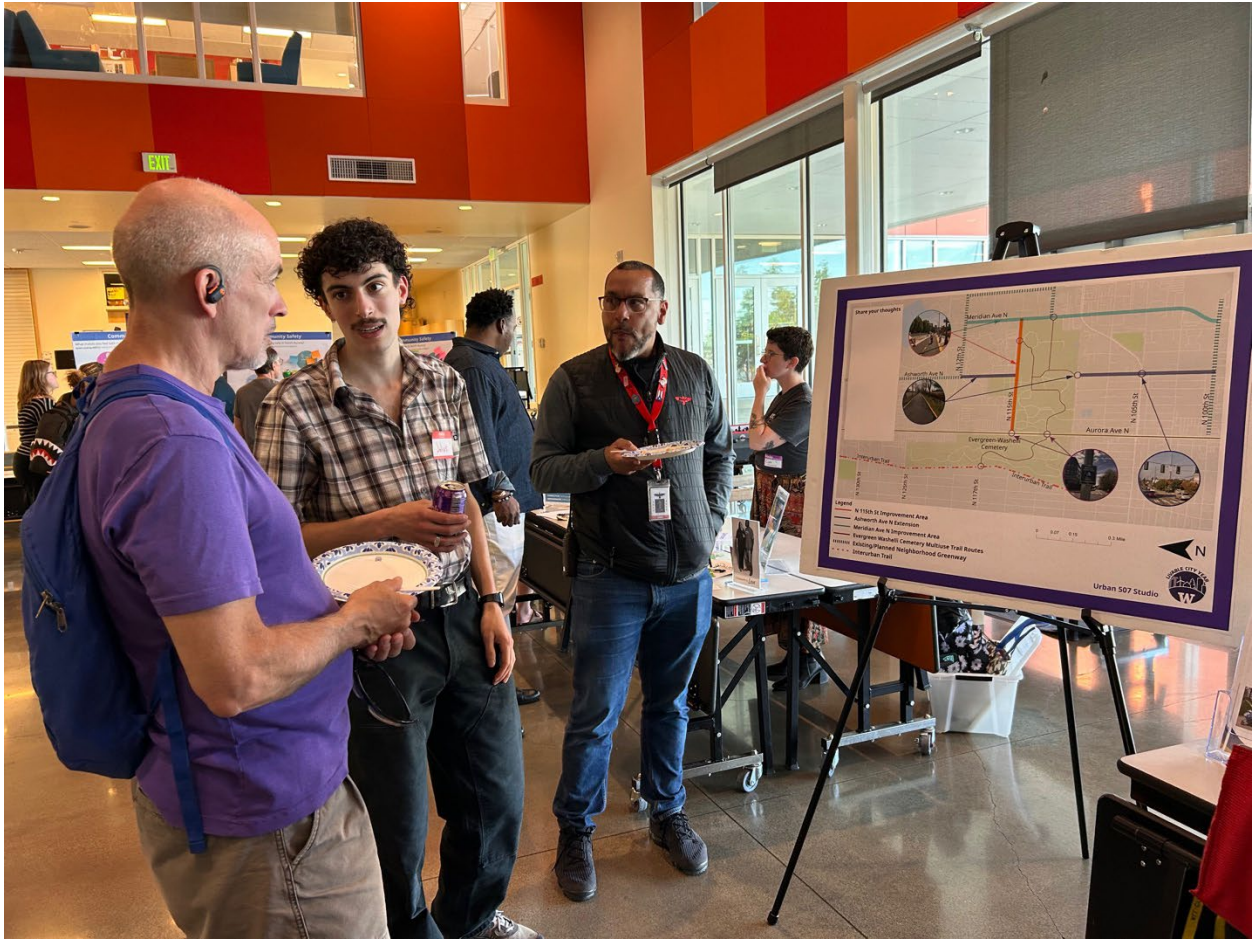


Figure 9 Attendees talk with UW MUP Mobility Students staff in front of brainstormed bike routes through Evergreen-Washelli Cemetery at the Robert Eagle Staff Middle School event.

What they heard:

General feedback:

- Many residents are afraid of walking or cycling on Aurora Ave N, especially at night. Crossing Aurora is particularly challenging. One participant who uses a mobility aid said she must be selective about crosswalks because of short crossing periods.
- Residents use a variety of modes but mostly drove to the events. Those who enjoy walking will still drive to a business on Aurora Ave N even for short trips, and generally avoid Aurora for all other modes except transit. Attendees noted that for walking, biking or rolling, they prefer using streets parallel to Aurora Ave N until reaching a destination or preferred crossing.
- Parents generally let children walk or bike to school with some safety apprehension; two parents reported that “many other parents” don’t allow it.

- Crime is a significant concern, with multiple reports of bike theft. Opinions differed on the temporary barricades residents placed to block local streets after shootings. Some participants tentatively support them, while others say they worsen already-difficult mobility, especially for people driving.
- Evergreen-Washelli Cemetery access: Generally supported, though residents raised concerns about lighting, possible crime, uncertainty over whether entry is allowed, a lack of convenient Americans with Disabilities Act-accessible entrances, and a lack of wayfinding signage.
- Greenway improvements along Fremont Avenue: General support for replacing speed humps with speed cushions (which need space free of parked cars) and removing parking from one side of Fremont to reduce conflict among the sidewalk, parking, and bike lane.
- Roosevelt Way De-arterialization: is generally supported, though some are concerned about closing traffic.

Placemaking:

The Placemaking table shared project proposals aimed at activating underutilized spaces throughout the North Aurora Initiative area and helping residents envision their neighborhood through activations and gathering spaces. Student proposals included a walking tour of the North Aurora Initiative area, public space activation through events at key locations in the corridor, pedestrian safety and comfort concepts along streets and alleys, and a proposal to temporarily pedestrianize Aurora Ave N for pedestrians, bicyclists and local businesses. The approach asked what makes neighborhoods unique, what residents value, and what they want **preserved or added**.

The Studio Developed:

1. **Walking tour map.** Participants discussed landmarks and used sticky notes and markers to add locations worth including in a prospective walking tour.
2. **Build your own space.** Participants designed an underutilized public space using cutouts of easy-to-install furniture and activities. Spaces were: Oak Tree Village at Licton Springs and Washelli Cemetery at Bitter Lake. Most-added items: picnic tables, streetlights, basketball courts, playgrounds, and benches; sticky-note ideas

included ping-pong tables, chess and mahjong tables, and a big playground.



Figure 10 Attendees talk with UW MUP Placemaking Students staff in front of build your own space boards at the Bitter Lake Community Center event.

What they heard:

- An overwhelming majority of people were excited that underutilized spaces had been identified, and were especially interested in outdoor pop-up events that help the community gather and feel connected.
- Gathering spaces and events at Evergreen-Washelli Cemetery was the most popular proposal. Many participants didn't know the green space is publicly accessible without having relatives there, and people liked taglines like "(A)Live at Washelli."
- Oak Tree Village is seen as an underutilized potential "third space." Many residents knew it is leased by Seattle Public Schools to a private company and were disappointed at the lack of City action.
- Residents raised safety concerns about alley use and wanted more opportunities and fewer bureaucratic hoops for community stewardship.

- The Build Your Own Space activity favorites were picnic tables and seating, play spaces, pavilions and gazebos, and streetlights; people wanted safe places to play and hang out.
- Long-time residents and seniors want to make the neighborhood “their own” while addressing long-standing safety issues.