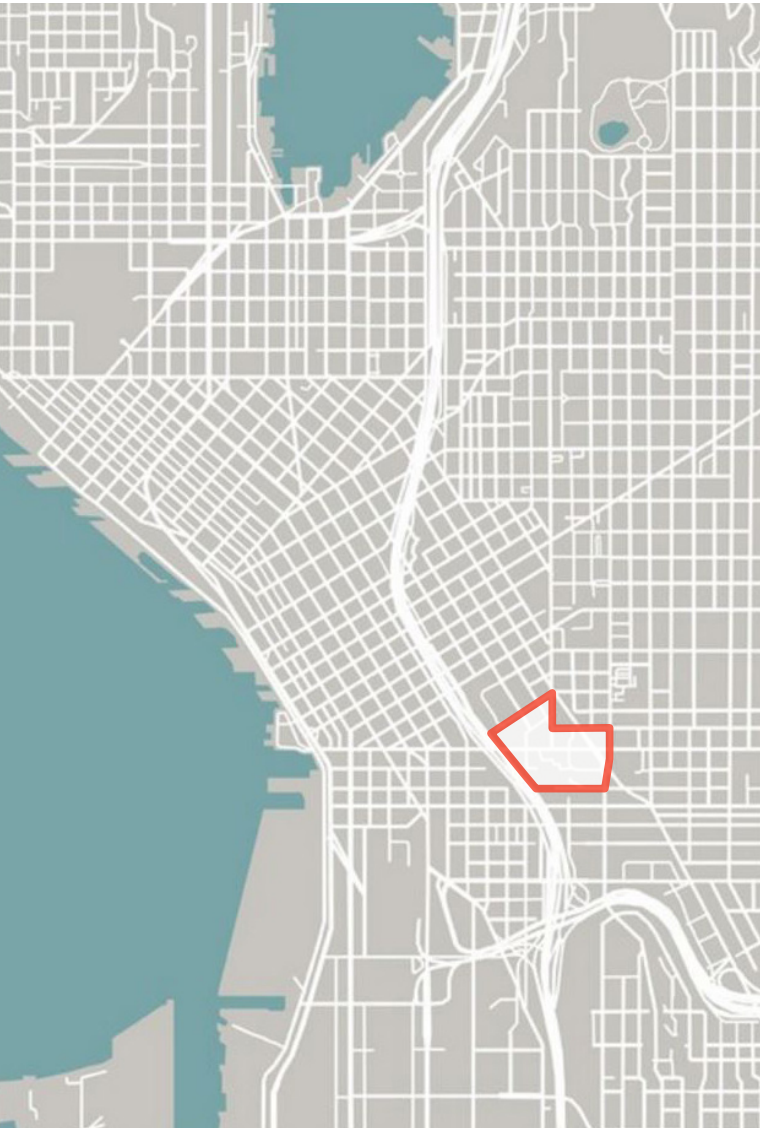
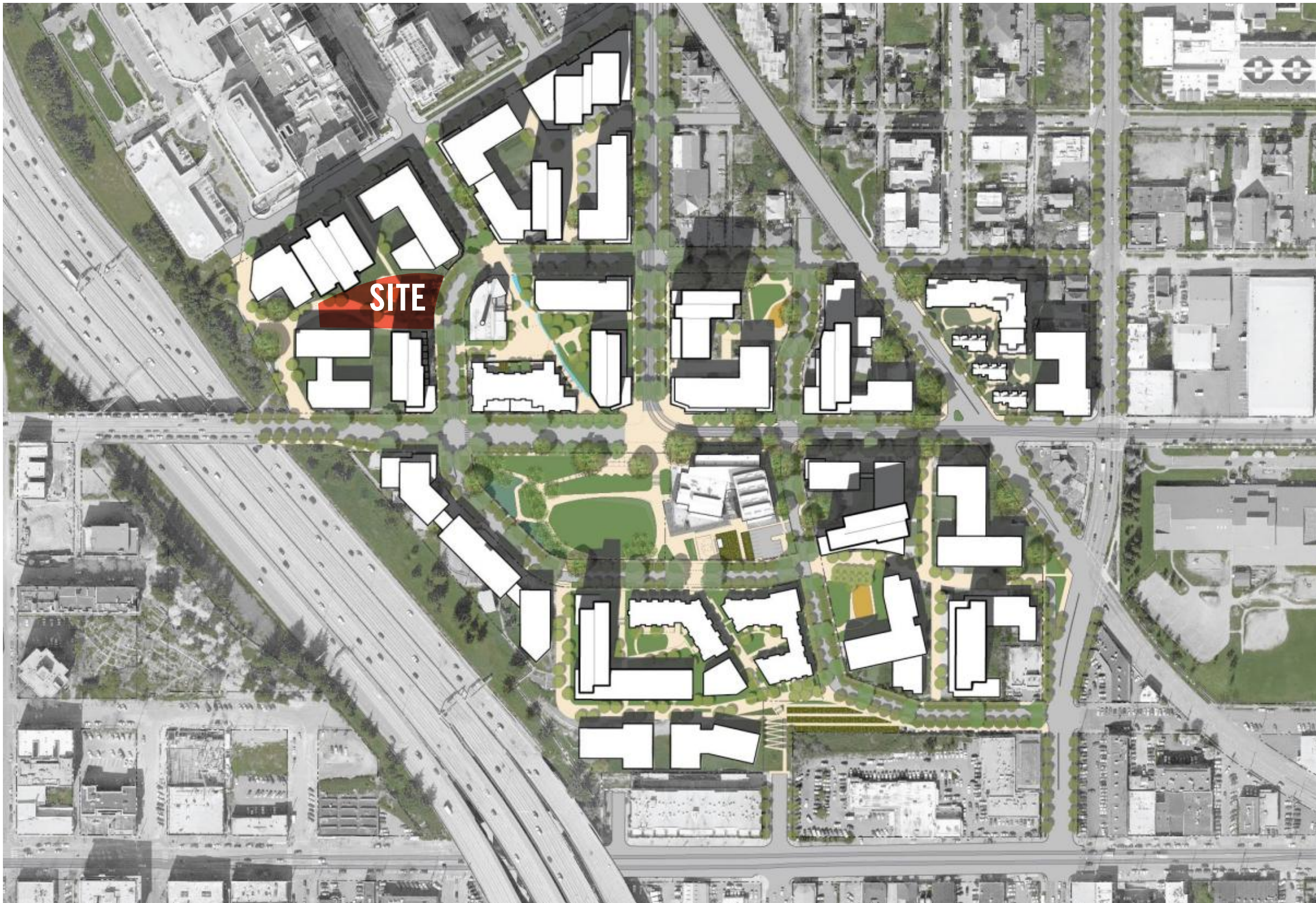


BLOCK 7 POCKET PARK

CONCEPT DESIGN

YESLER TERRACE CONTEXT - 2012 MASTER PLAN



Vicinity Map

YESLER TERRACE - STREET VACATION AND PUBLIC BENEFIT CONDITIONS



Green street loop



10th Ave hill climb

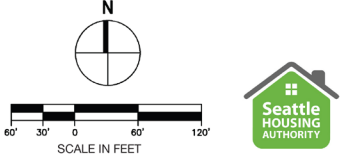


Pocket parks

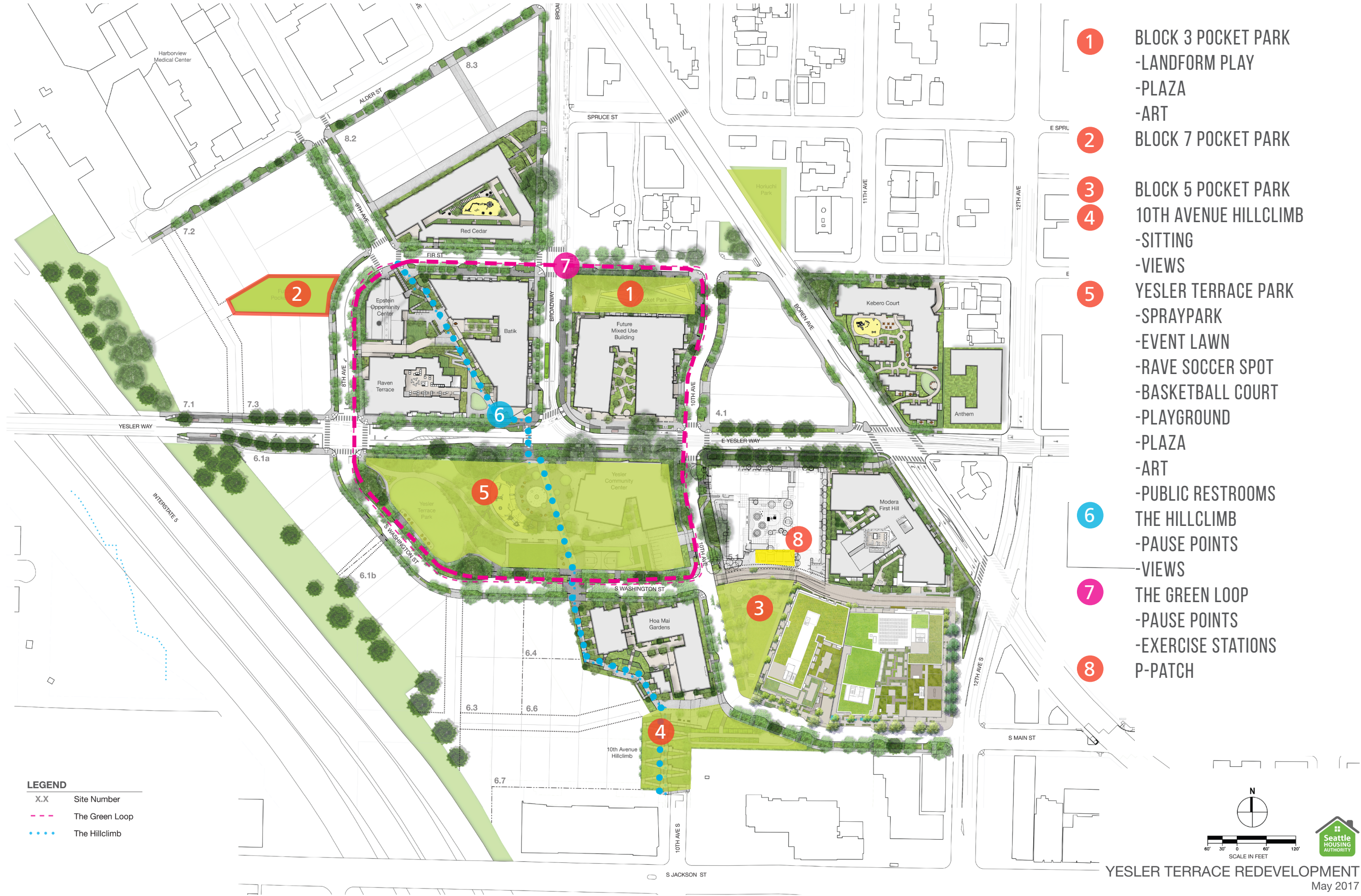
YESLER TERRACE CONTEXT - 2020



- LEGEND**
- X.X Site Number
 - The Green Loop
 - ... The Hillclimb



YESLER TERRACE OPEN SPACE NETWORK



OUTREACH SUMMARY

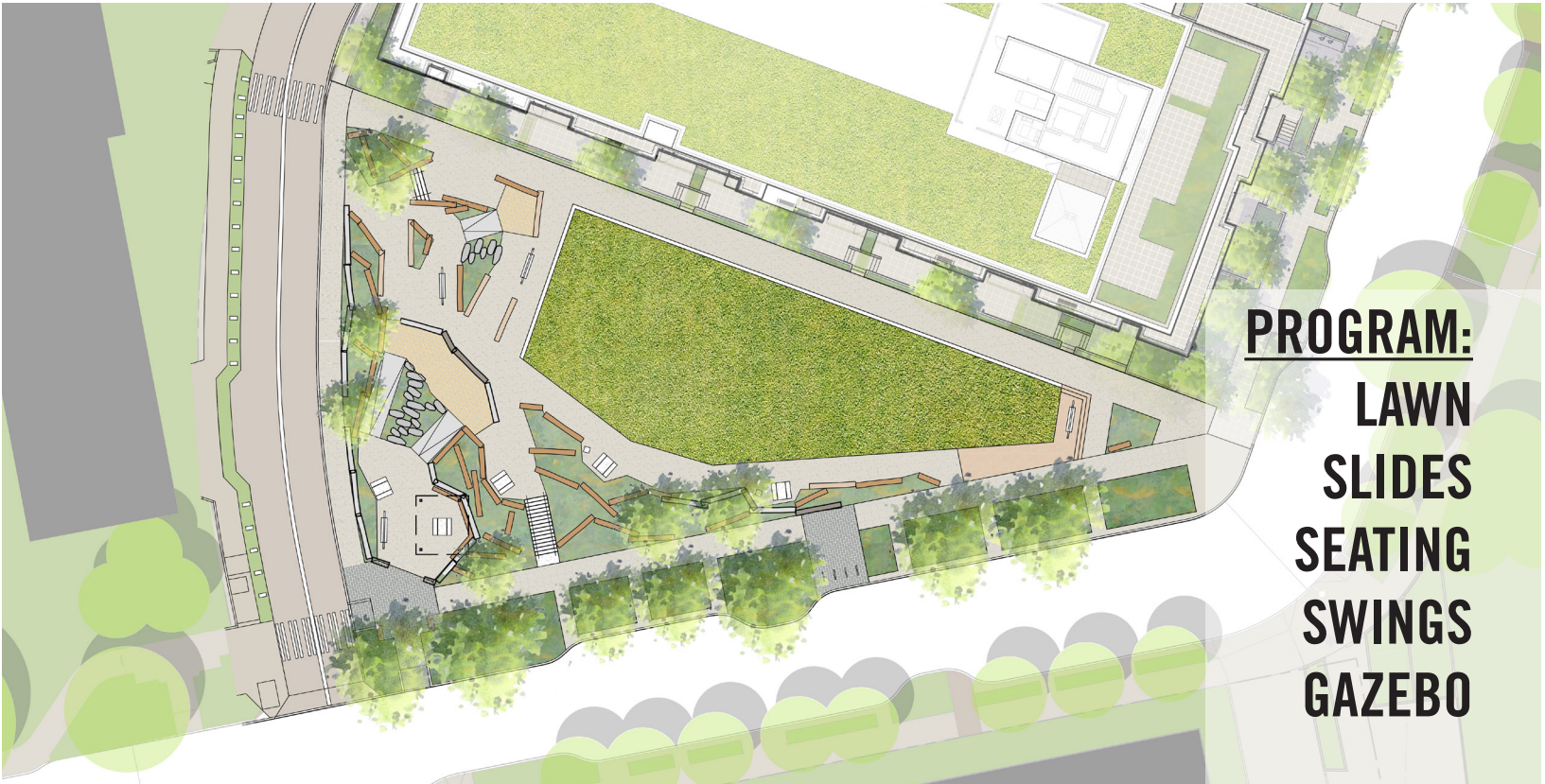
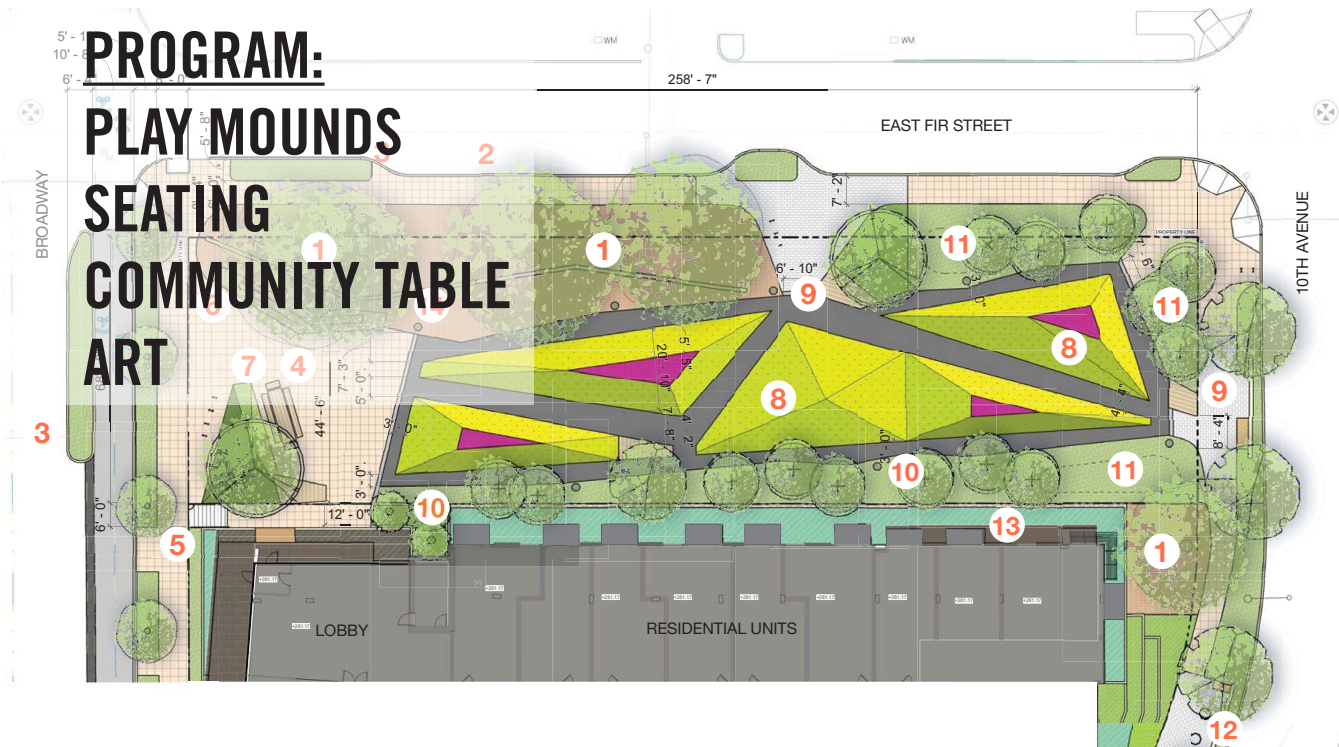
- Initial redevelopment & master plan outreach consisting of focus groups by language w/Yesler Terrace Community Council (YTCC) – 2005 through 2010
- Community Review Committee comprised of related stakeholders, including YTCC, neighborhood associations, neighboring institutions, service providers, and smart growth advocates - formed in 2006
- Entitlement approvals requiring significant outreach to SHA residents and neighbors:
 - Environmental Impact Statement - 2011
- City Council Approvals:
 - Rezone Legislation, Cooperative Agreement, Street Vacation - 2012
 - Final Plat w/ easements and covenants – 2014
- YTCC presentation regarding Block 7 pocket park and adjacent development site – 13 August 2019
- SDC Concept Review - 3 September 2020
- YTCC Presentation 2 regarding Block 7 Pocket Park and adjacent development site - TBD

POCKET PARKS - STREET VACATION AND PUBLIC BENEFIT CONDITIONS

STREET VACATION CONDITIONS:

- Each park must be at least 12,000 SF and have 70 LF of frontage on a public street
- Park design to receive SDC guidance at SD and DD phases
- Design for greater public, not just adjacent or Yesler Terrace residents
- Passive space for sitting, visiting, looking at views, or reading
- Active space for play focused on children
- Street furniture, play facilities, and pedestrian-level lighting
- No reserved seating
- Park is open to public
- No community gardening space in pocket park

POCKET PARKS



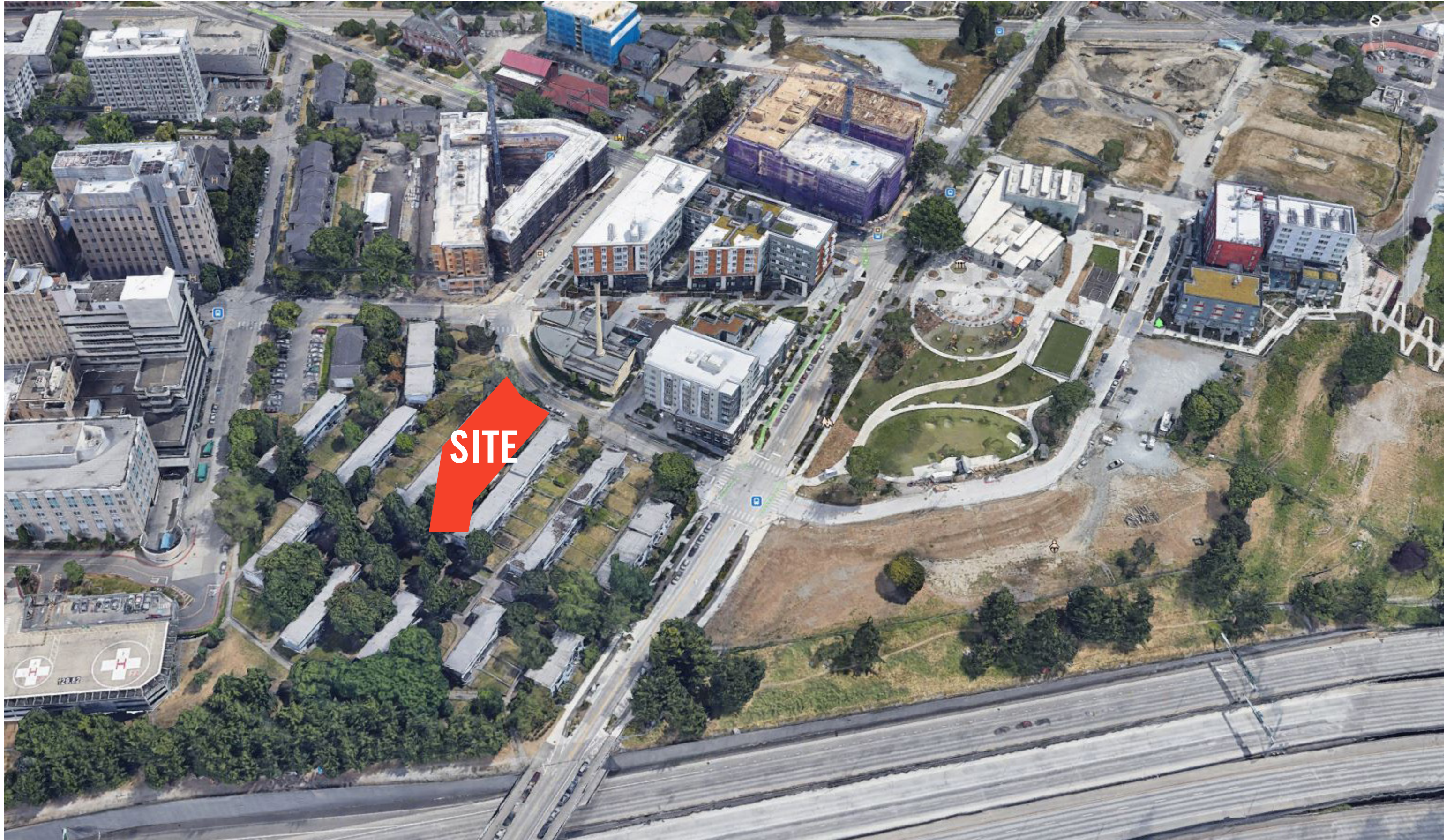
BLOCK 3 POCKET PARK



BLOCK 5 POCKET PARK

BLOCK 7 POCKET PARK

SITE + CONTEXT

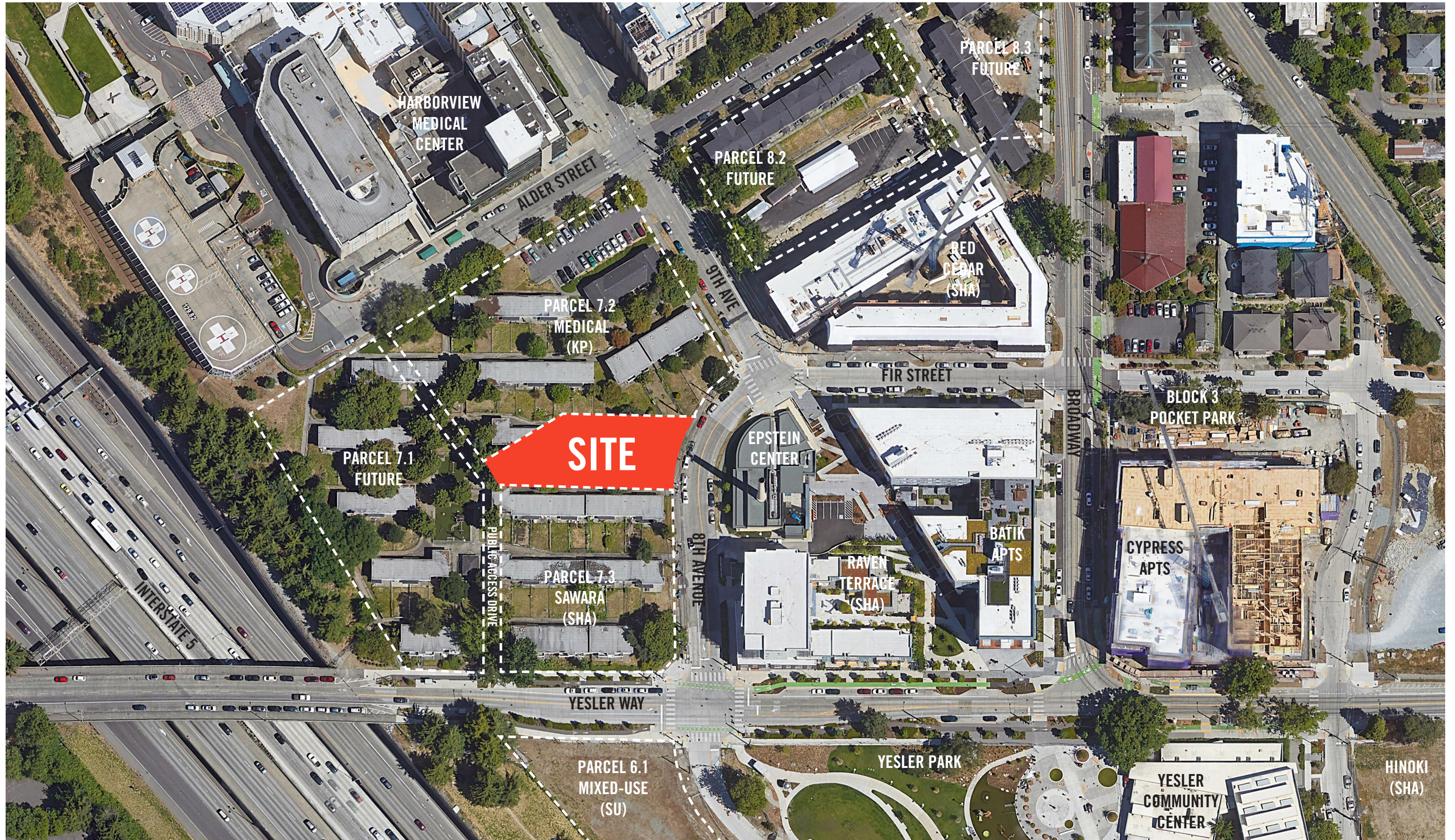


BLOCK 7 POCKET PARK

SITE + CONTEXT



SITE + CONTEXT



SEATTLE PUBLIC UTILITIES
PROJECT MANAGEMENT AND ENGINEERING
700 5TH AVENUE
PO BOX 34018
SEATTLE, WA 98124-4018
(206) 233-7900

WATER:
SEATTLE PUBLIC UTILITIES
700 5TH AVENUE, SUITE 4900
PO BOX 34018
SEATTLE, WA 98124-4018
(206) 684-3000

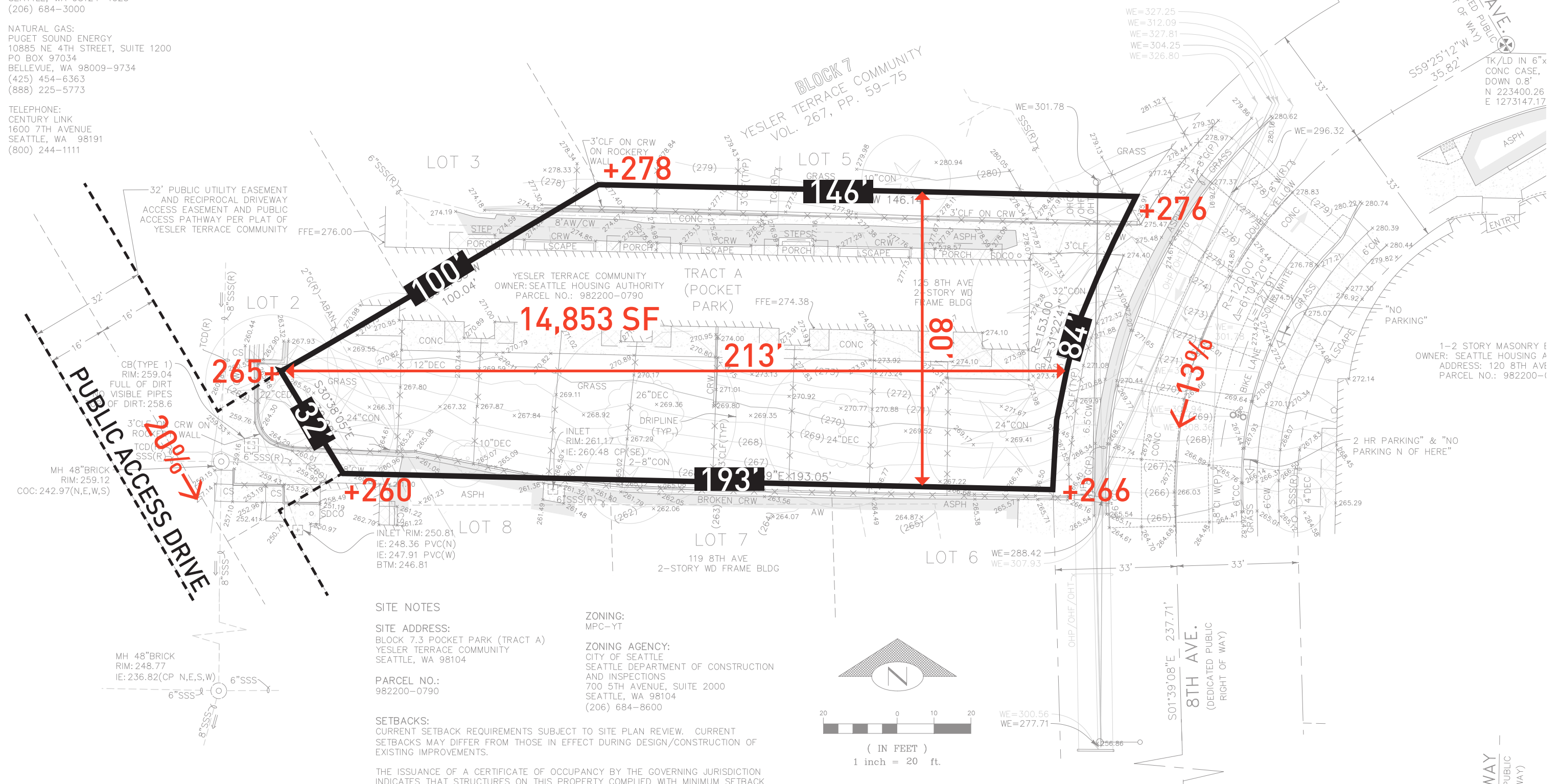
POWER:
SEATTLE CITY LIGHT
700 5TH AVENUE, SUITE 3200
SEATTLE, WA 98124-4023
(206) 684-3000

NATURAL GAS:
PUGET SOUND ENERGY
10885 NE 4TH STREET, SUITE 1200
PO BOX 97034
BELLEVUE, WA 98009-9734
(425) 454-6363
(888) 225-5773

TELEPHONE:
CENTURY LINK
1600 7TH AVENUE
SEATTLE, WA 98191
(800) 244-1111

SITE + CONTEXT

WIRE ELEVATION NOTE:
ELEVATIONS OF WIRES AT UTILITY POLES INCLUDE ONLY THE
ELEVATIONS OF THE HIGHEST AND LOWEST WIRES AT THAT
POLE.



EXISTING SITE PHOTOS



BLOCK 7 POCKET PARK



EXISTING SITE PHOTOS

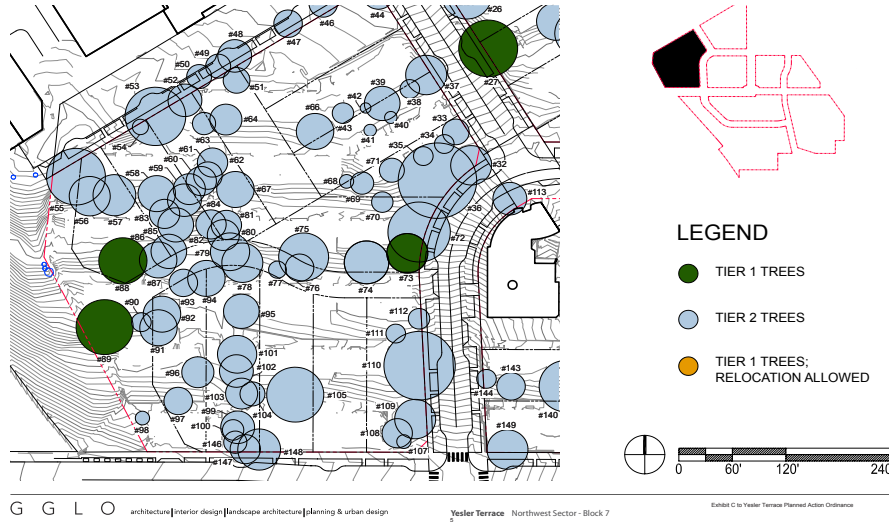


BLOCK 7 POCKET PARK

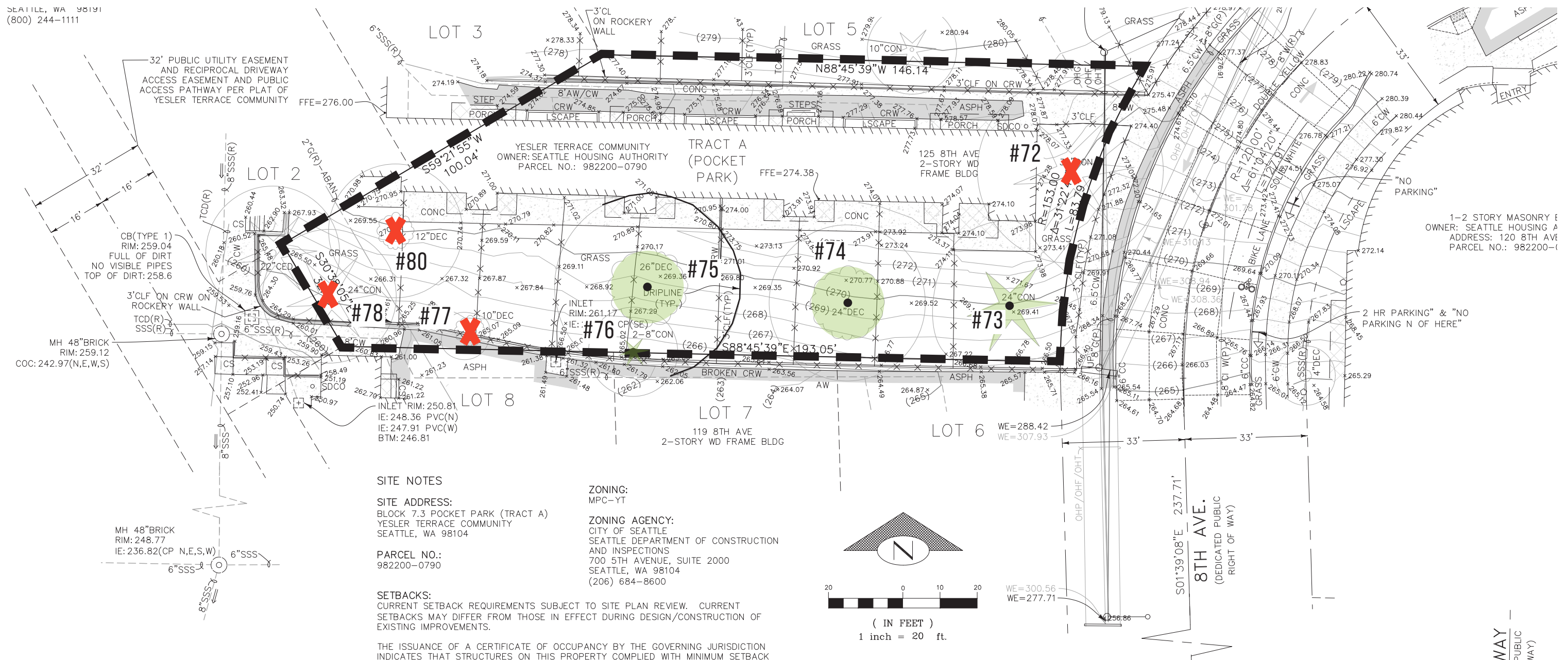
EXISTING SITE PHOTOS



EXISTING TREES



#	Tier	Common (Scientific) Name	Status
72	2	Blue Atlas Cedar (<i>Cedrus atlantic</i> 'Glauca')	Remove
73	1	Deodor Cedar (<i>Cedrus deodara</i>)	Retain
74	2	Norway Maple (<i>Acer platanoides</i>)	Retain
75	2	Purple-leaf Plum (<i>Prunus cerasifera</i> 'Atropurpurea')	Retain
76	2	Chinese Photinia (<i>Photinia serrulata</i>)	Retain
77	2	English Holly (<i>Ilex aquifolium</i>)	Remove
78	2	Chinese Juniper (<i>Juniperus chinensis</i>)	Remove
79	2	Chinese Juniper (<i>Juniperus chinensis</i>)	Remove
80	2	Port Orford Cedar (<i>Chamaecyparis lawsoniana</i>)	Remove



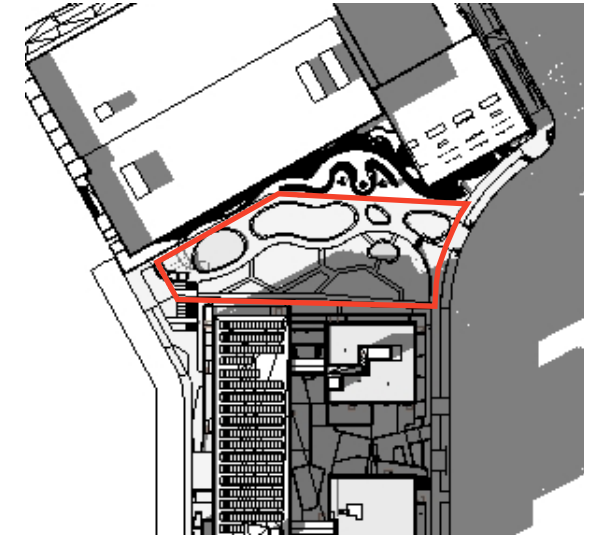
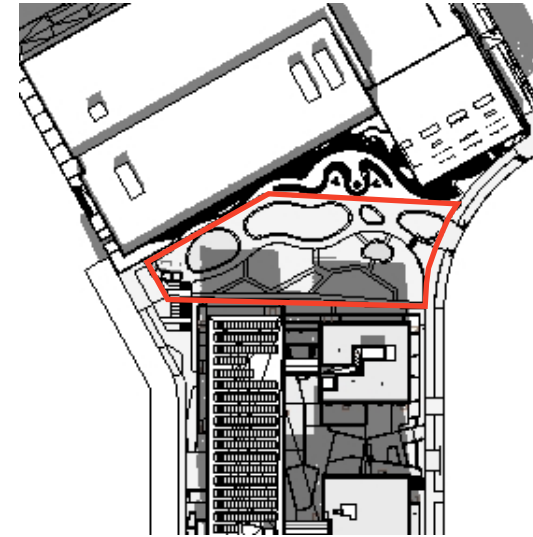
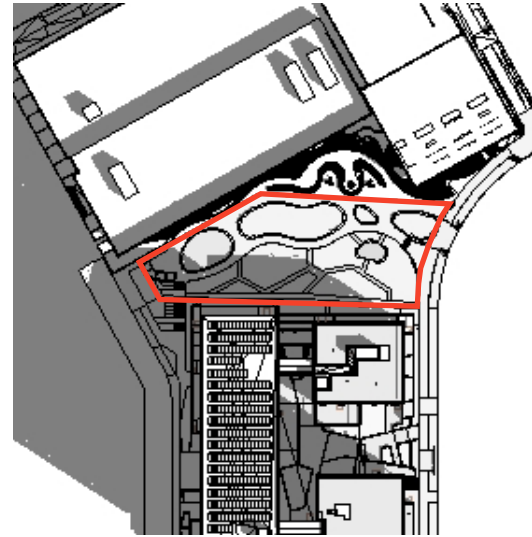
EXISTING TREES



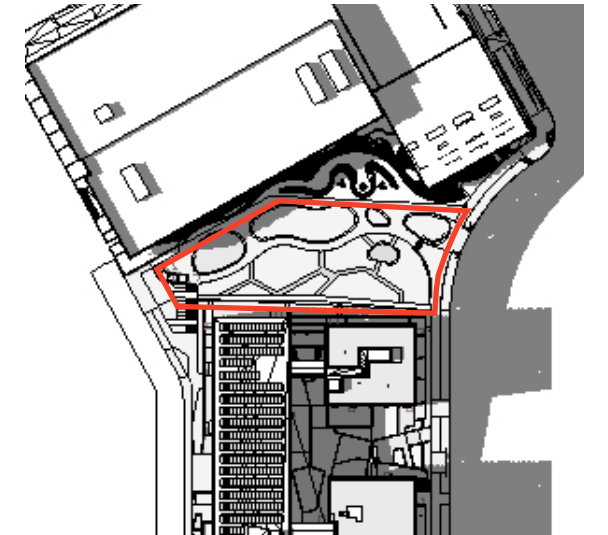
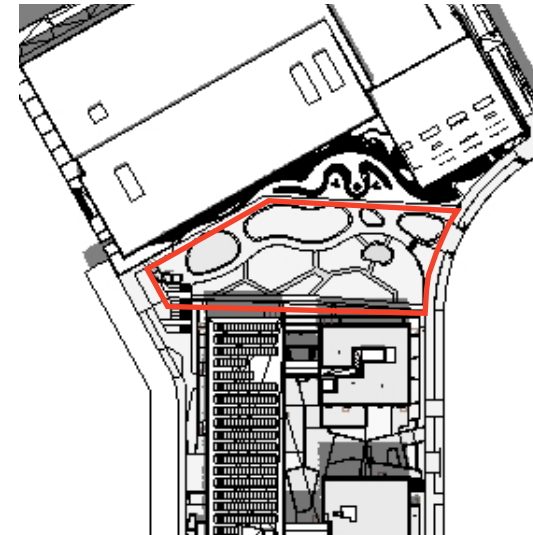
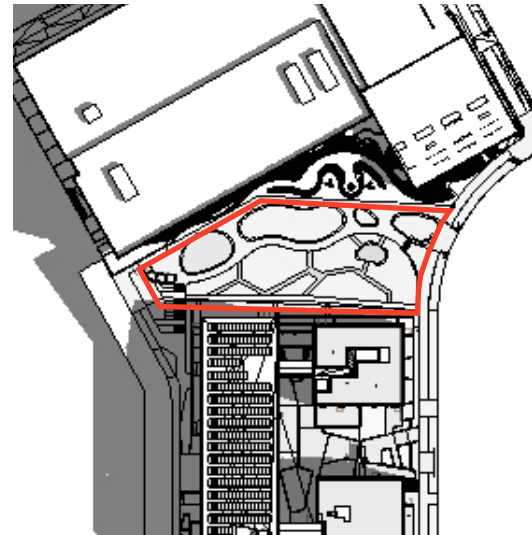
UPDATED SLIDE

SUN + SHADE STUDIES

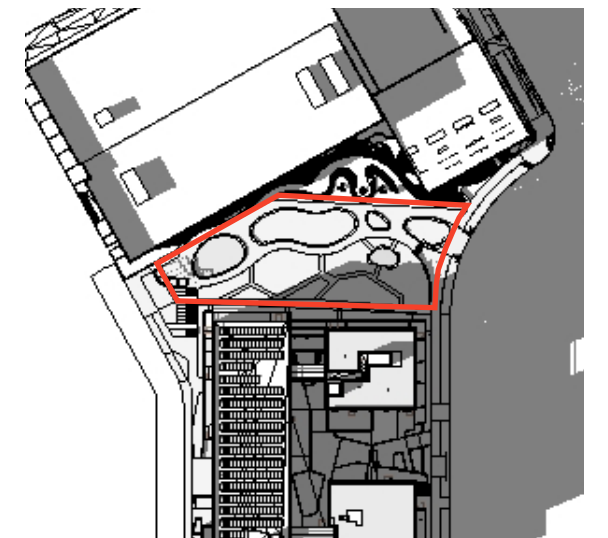
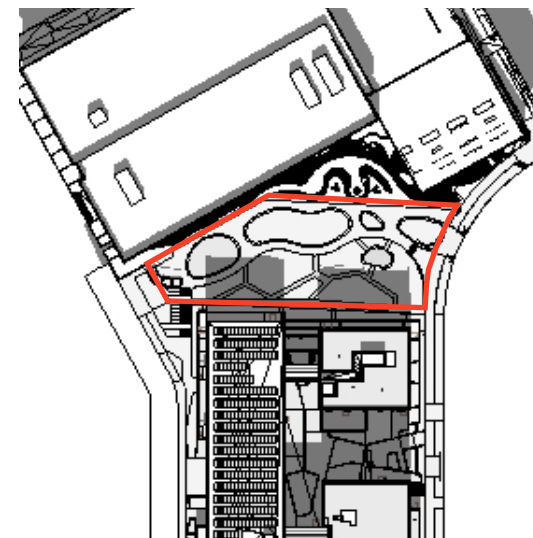
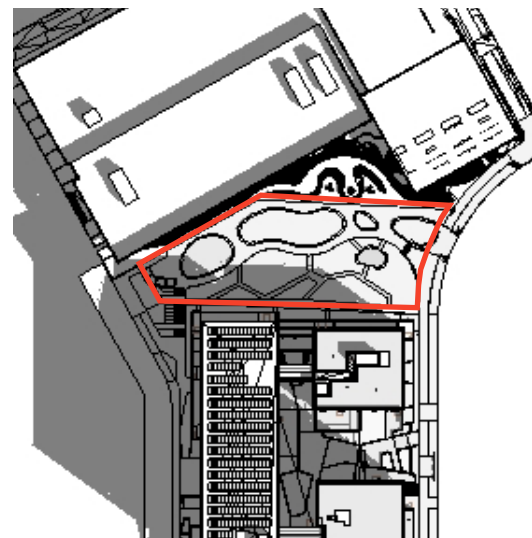
SPRING EQUINOX



SUMMER SOLSTICE



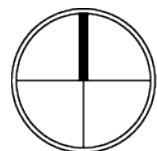
FALL EQUINOX



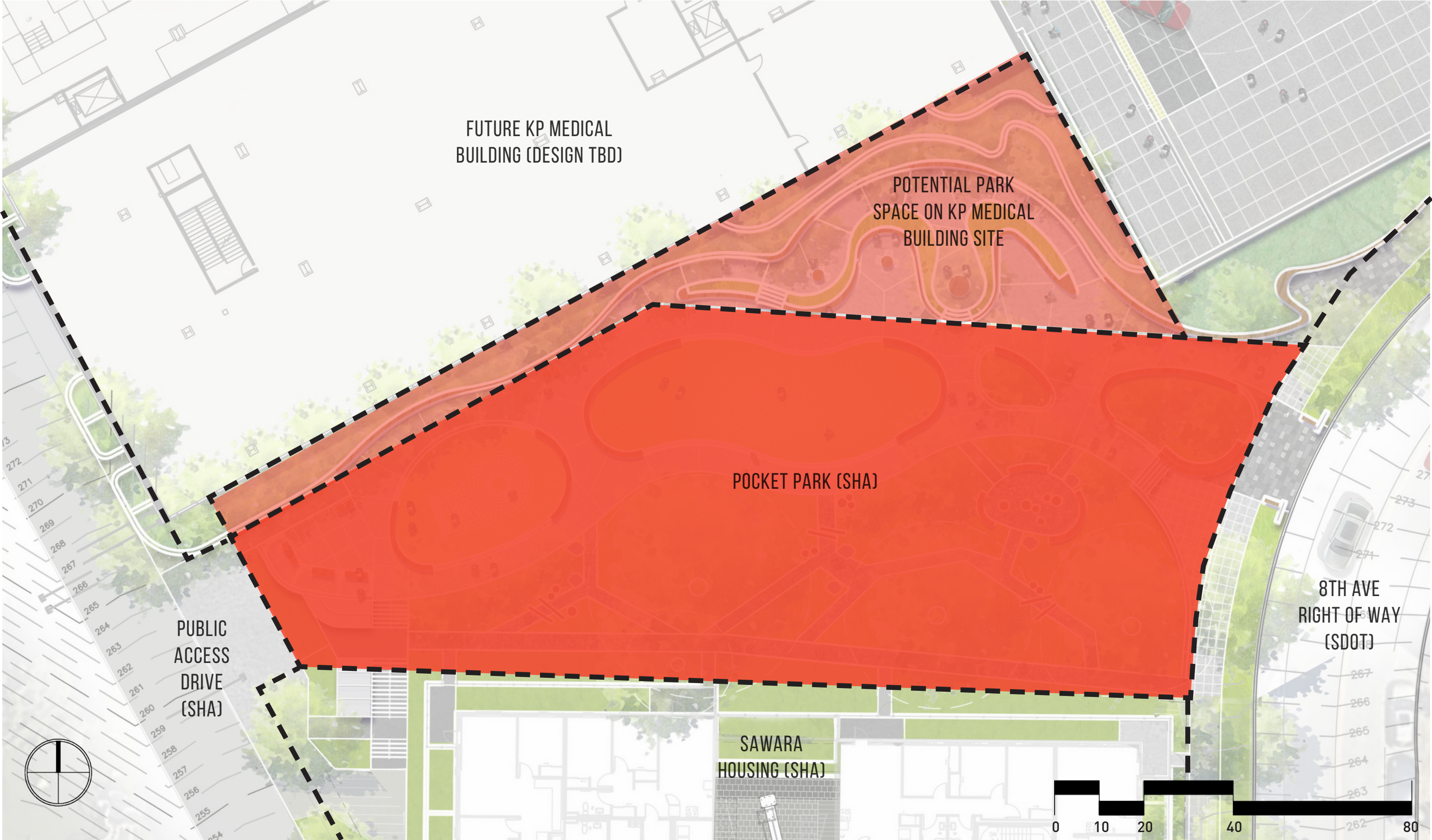
9 AM

NOON

4 PM



PROJECT DELINEATION



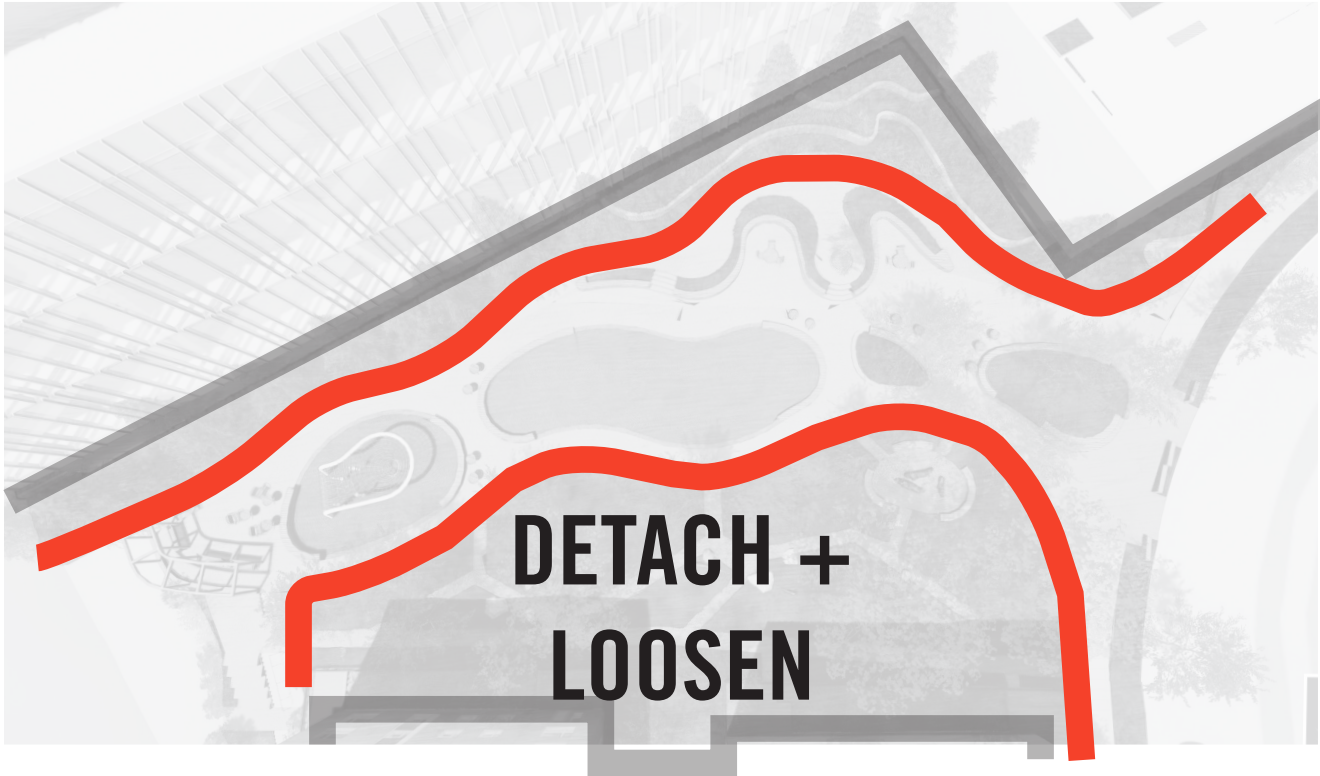
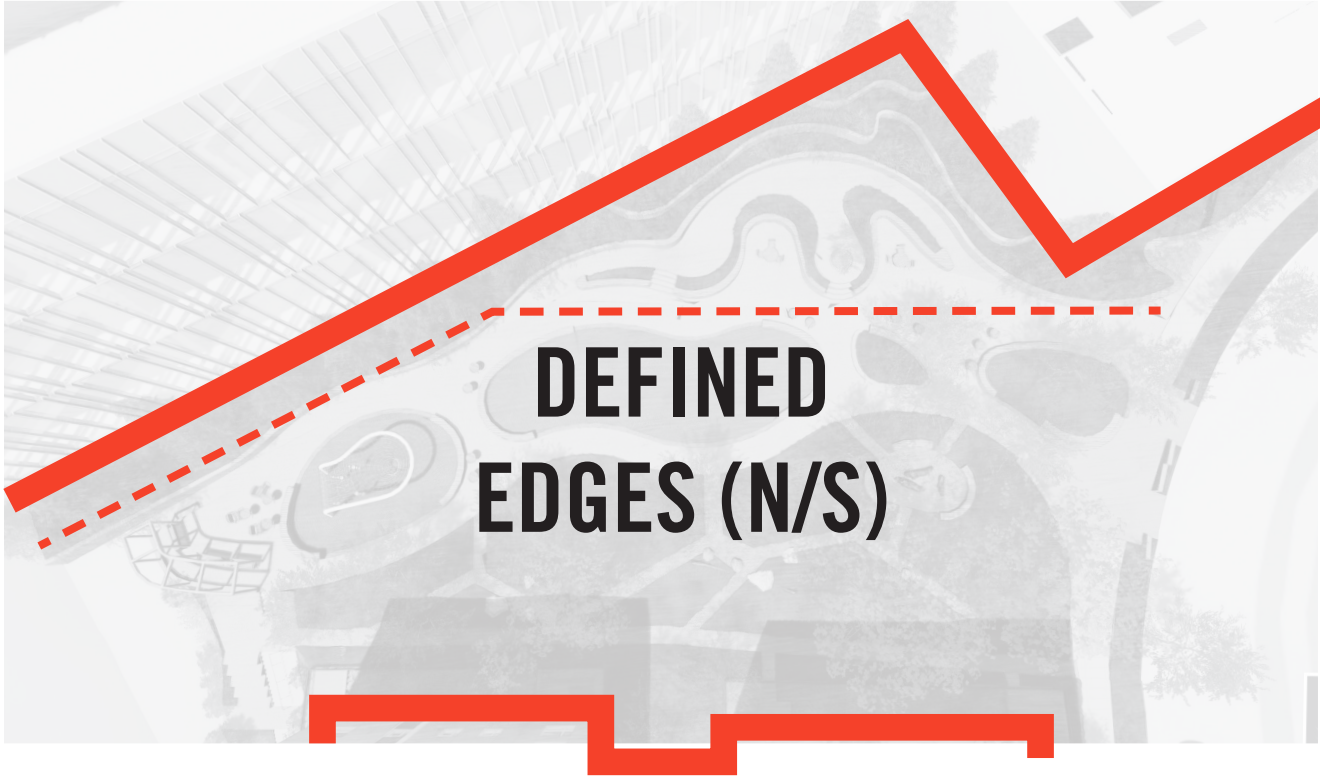
BLOCK 7 POCKET PARK

CONCEPT EXPLORATION



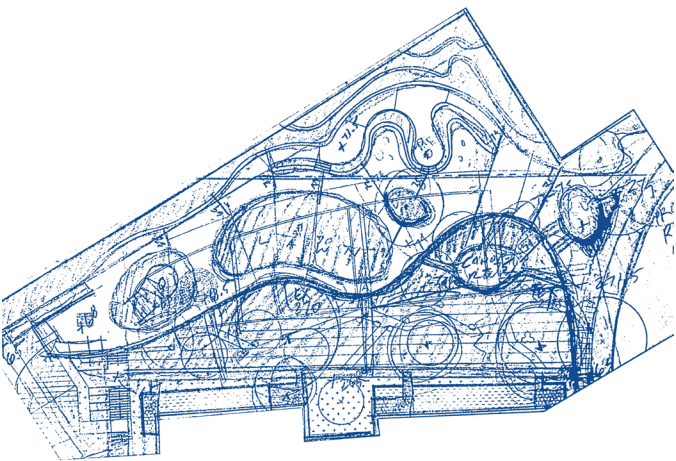
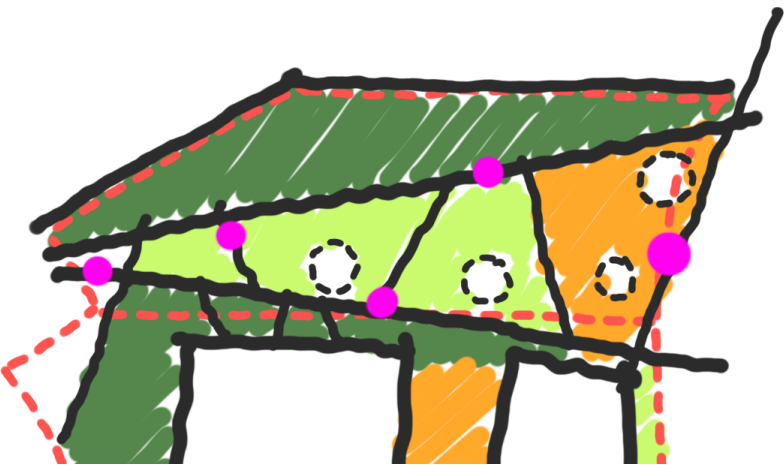
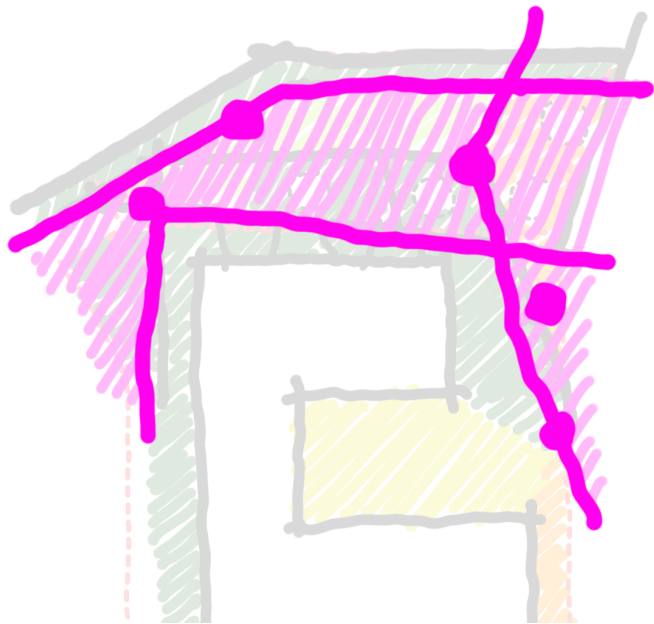
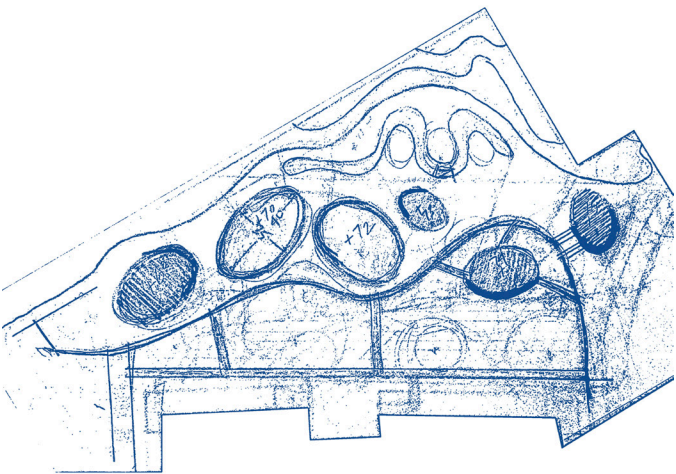
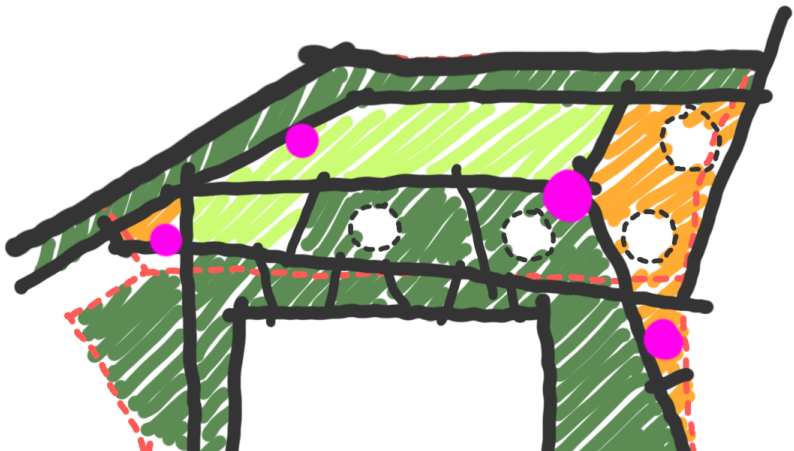
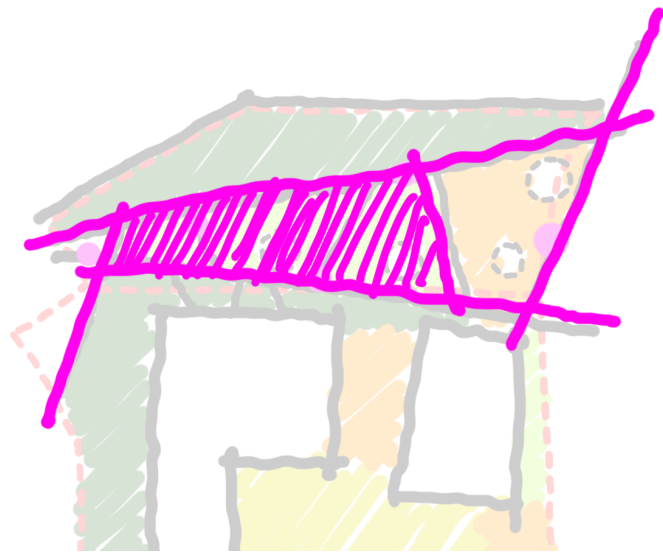
BLOCK 7 POCKET PARK

CONCEPT EXPLORATION



- Extroverted Ends to Highlight Views and Wayfinding
- Introverted Center Character based on Defined and Contained Edges
- Detach from Surrounding Architecture to Create Unique Character
- Use Grade Change N/S and E/W as Opportunity
- Create Healthy Conditions for Existing Trees to Thrive
- Create Maximum Access in Challenging Topography
- Provide Diverse Range of Seating Opportunities
- Provide Play Element with Scale to Define Park from Inside and Out

CONCEPT EXPLORATION



DESIGN PROGRAM



PROJECT DELINEATION



BLOCK 7 POCKET PARK

SITE PLAN



BLOCK 7 POCKET PARK

PROGRAM PLAN



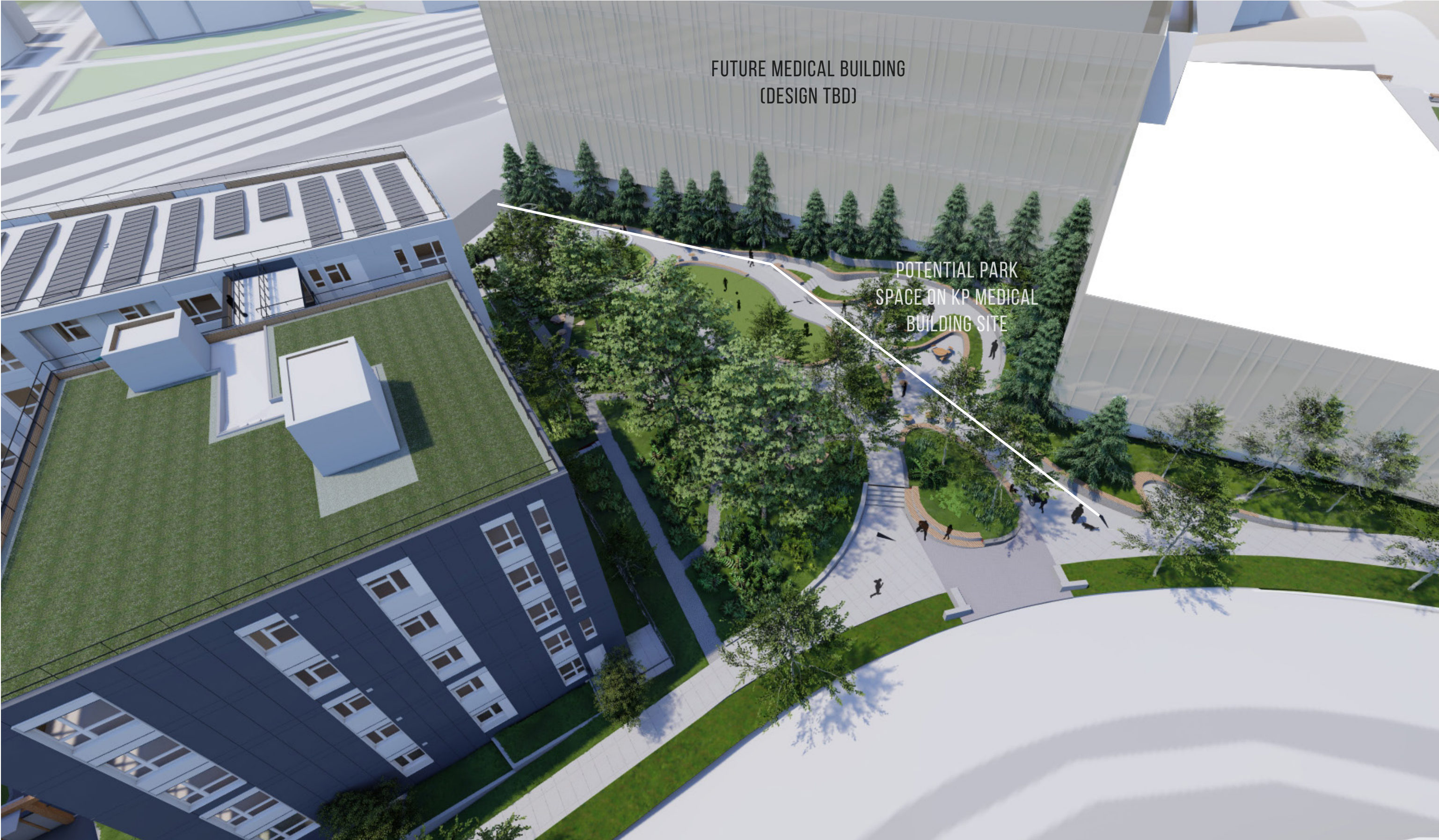
BLOCK 7 POCKET PARK

PROJECT PHASING



BLOCK 7 POCKET PARK

BIRDSEYE VIEW



BLOCK 7 POCKET PARK

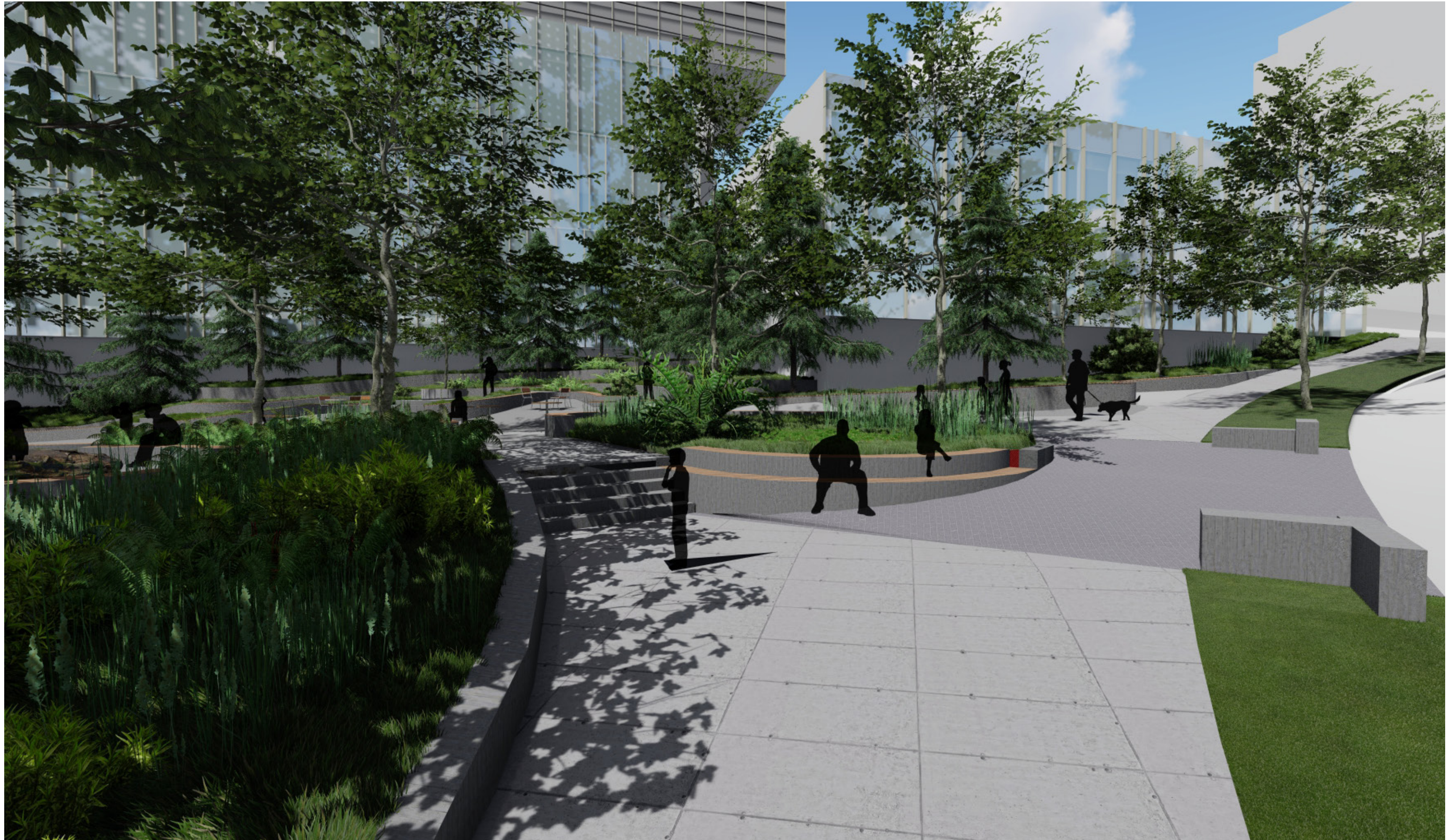
8TH AVENUE LOOKING SOUTH



FUTURE MEDICAL BUILDING
(DESIGN TBD)

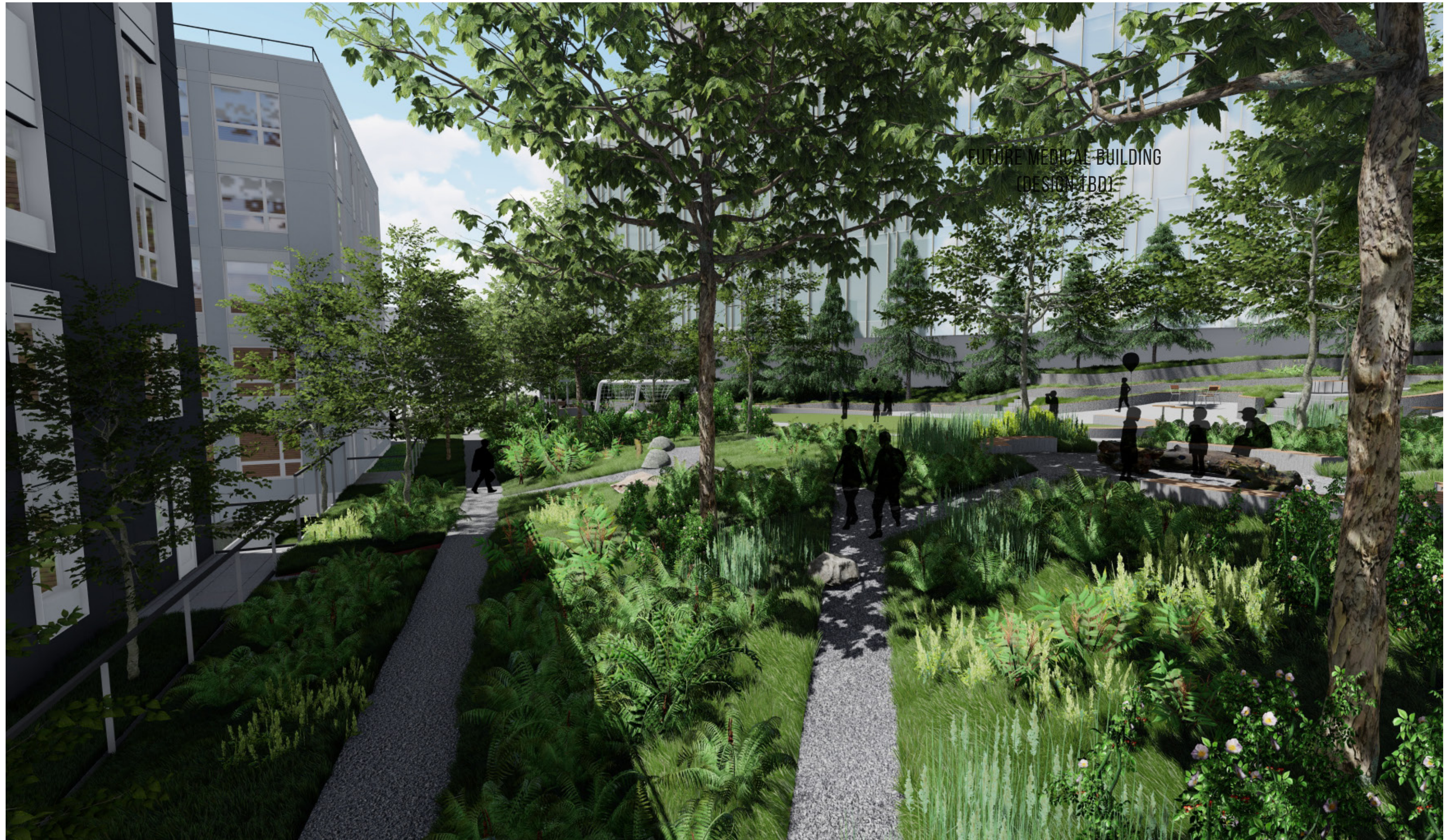
BLOCK 7 POCKET PARK

8TH AVENUE LOOKING NORTH



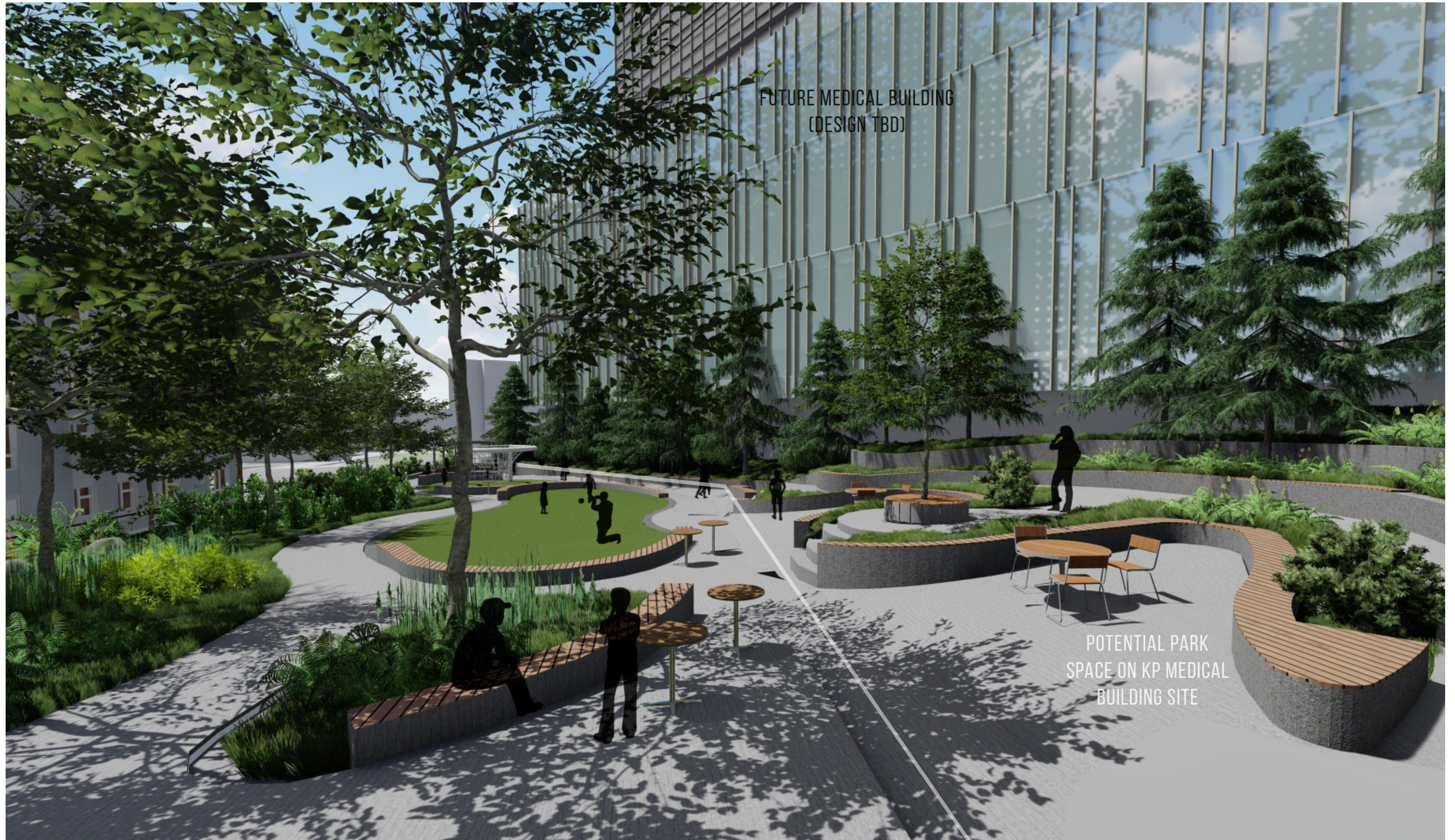
BLOCK 7 POCKET PARK

CANOPY TRAIL



BLOCK 7 POCKET PARK

PLAZA + PERCH



BLOCK 7 POCKET PARK

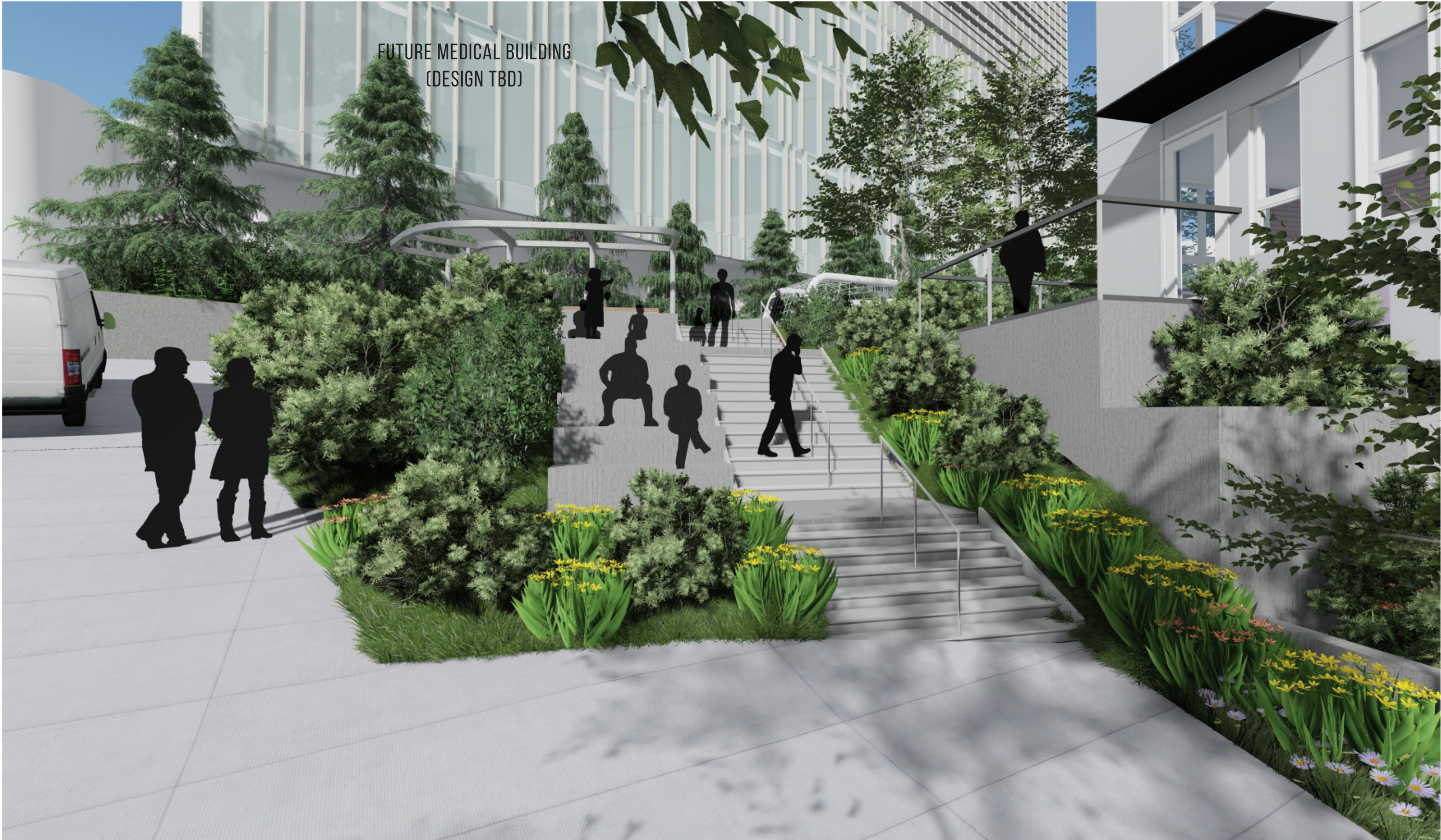
PLAZA + PERCH - INTERIM



BLOCK 7 POCKET PARK



PUBLIC ACCESS DRIVE



BLOCK 7 POCKET PARK

CANOPY ROOM



BLOCK 7 POCKET PARK

LANDFORM



BLOCK 7 POCKET PARK

CIRCULATION



SEATTLE DESIGN COMMISSION | 3 SEPTEMBER 2020 | SEATTLE HOUSING AUTHORITY & SITE WORKSHOP

ACCESS



VIEWS



BLOCK 7 POCKET PARK

SURFACING



SEATTLE DESIGN COMMISSION | 3 SEPTEMBER 2020 | SEATTLE HOUSING AUTHORITY & SITE WORKSHOP

PLANTING



LIGHTING CONCEPT



BLOCK 7 POCKET PARK



BLOCK 7 POCKET PARK