



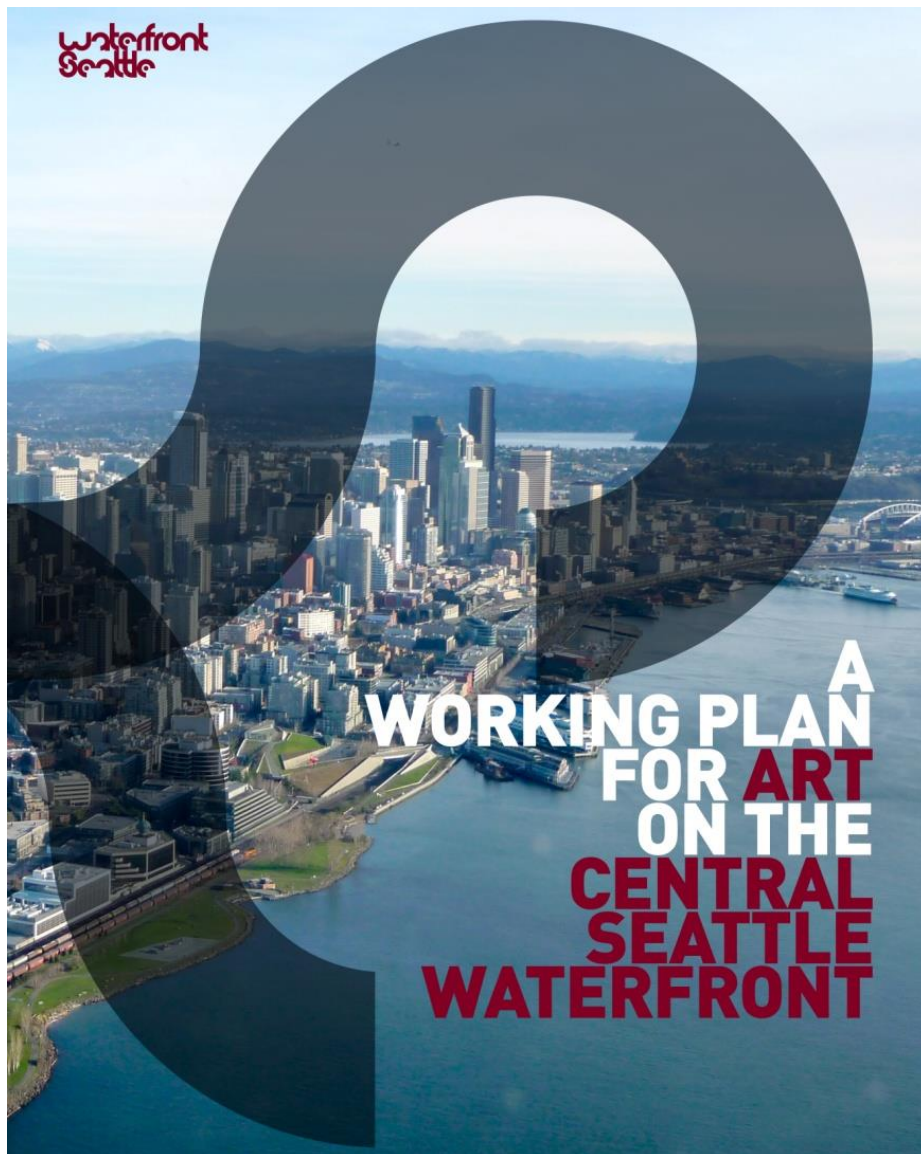
OFFICE OF ARTS & CULTURE

SEATTLE



**ARTS AND
CULTURE
ON THE
SEATTLE
WATERFRONT**

January 15, 2014

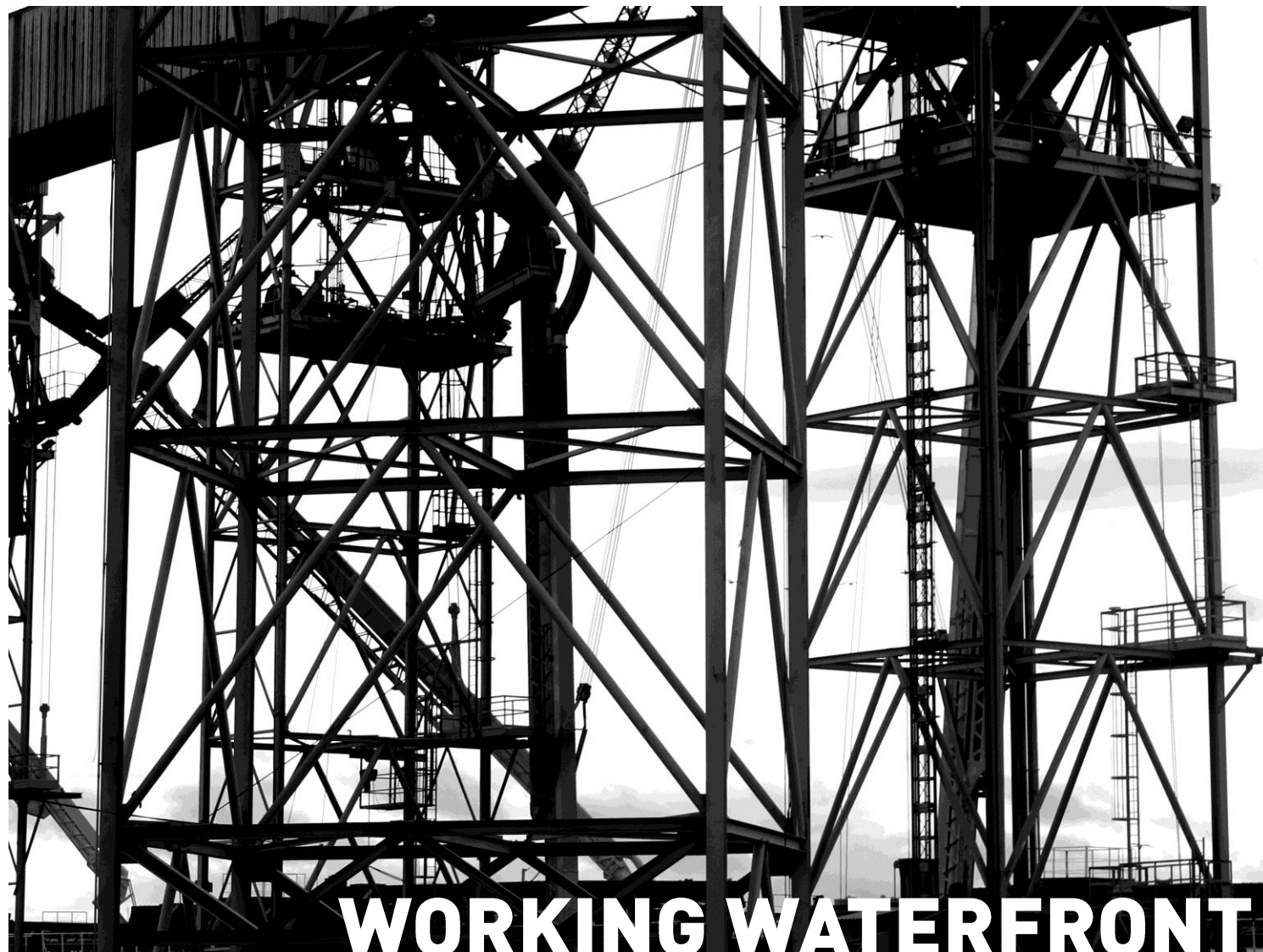


ECOLOGY ECONOMY COMMUNITY

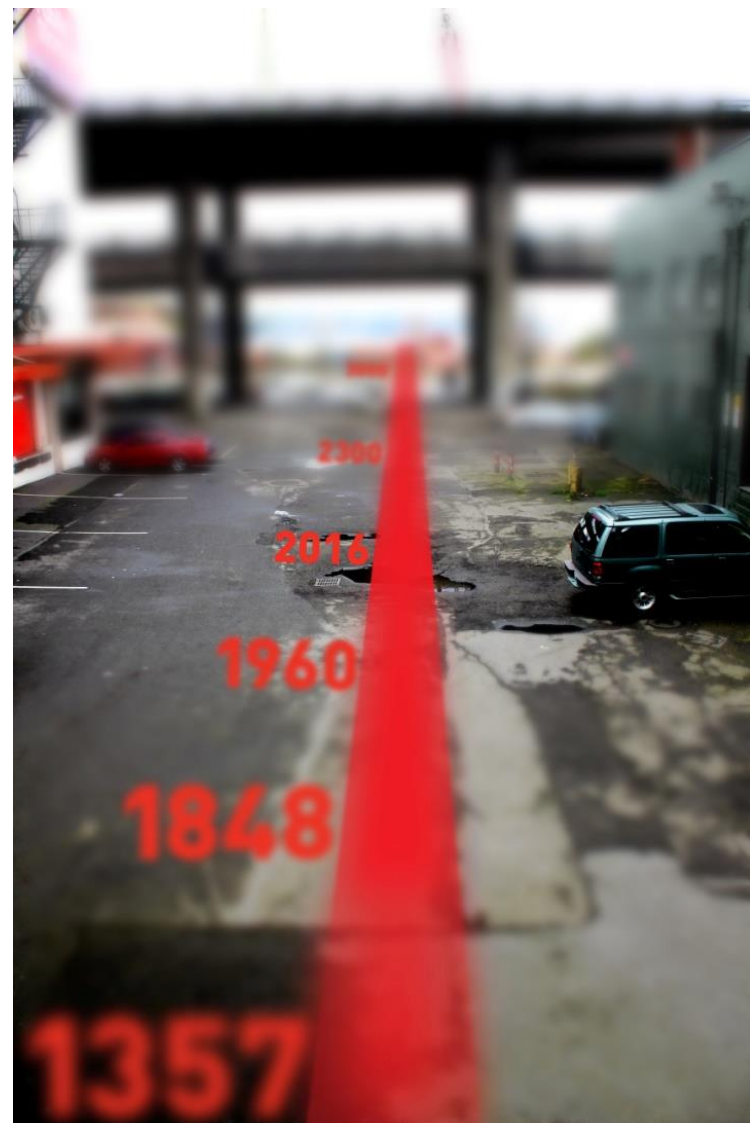




PORT: CONTINUOUS EXCHANGE



TIMELINES

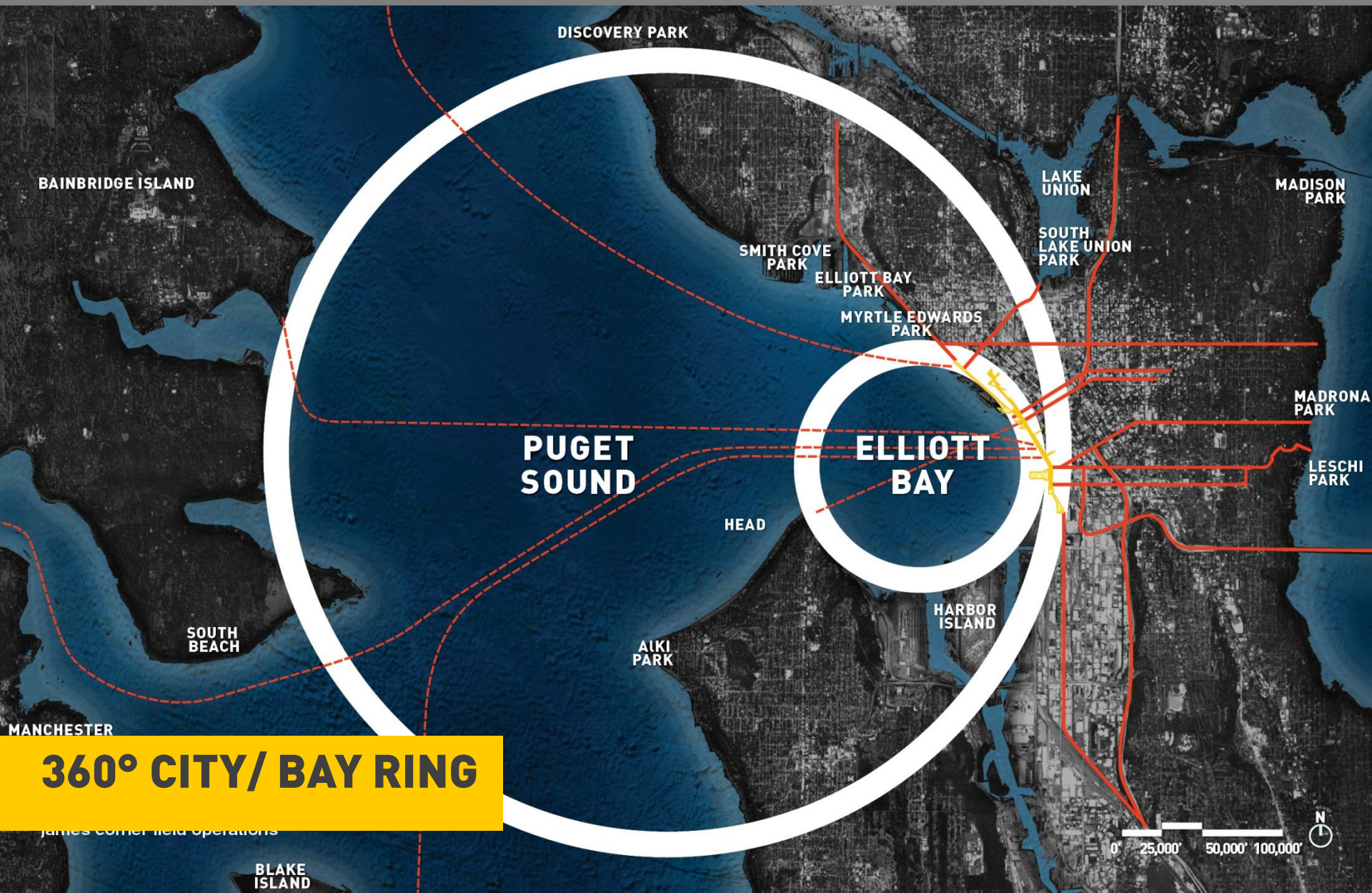


CULTURAL THINK TANK

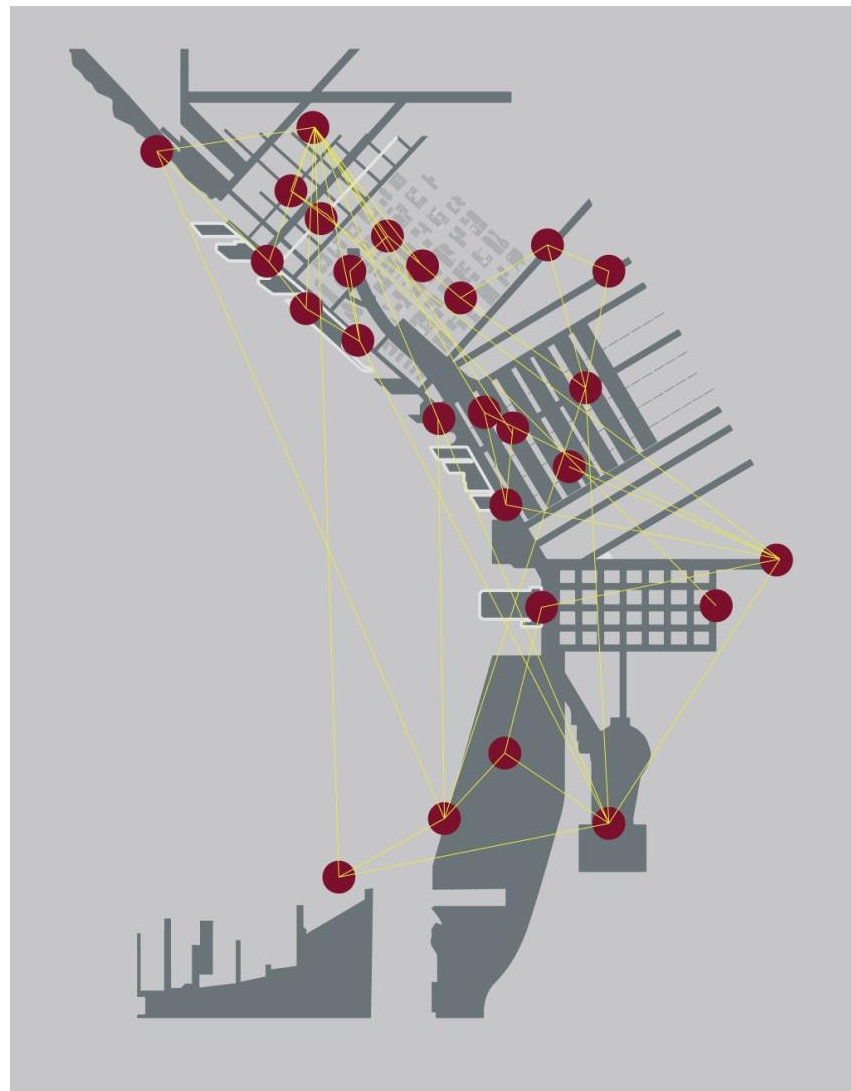


360° CITY



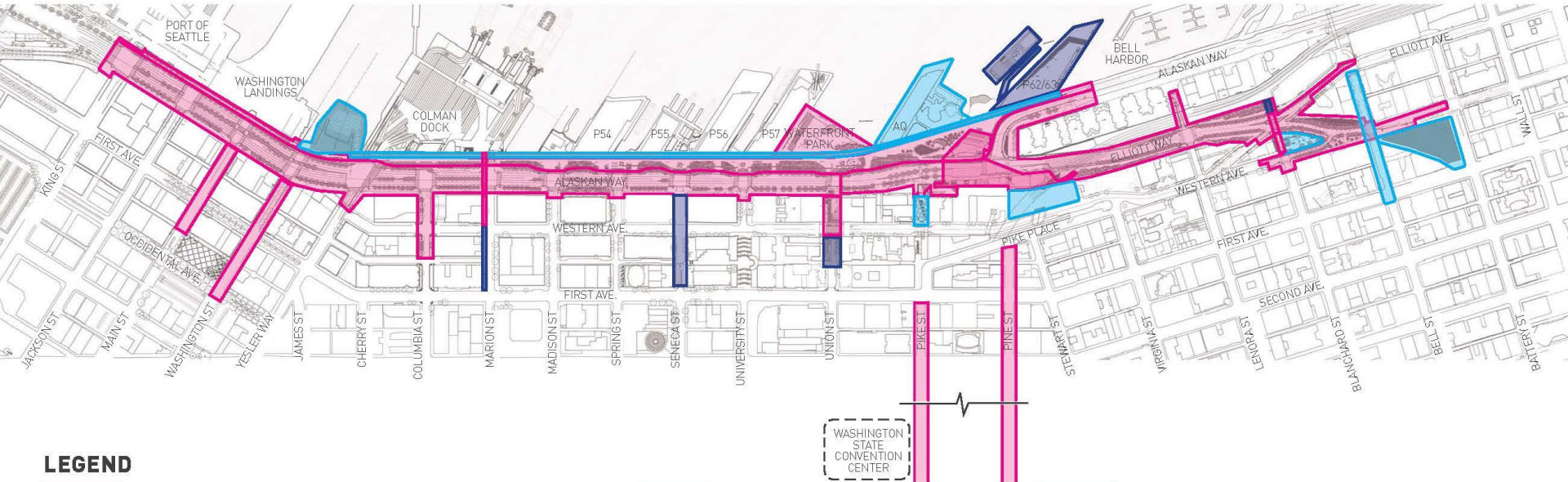


CONSTELLATION OF SITES



Quarterly presentations
on waterfront themes

WATERFRONT SEATTLE PHASING APPROACH SEPTEMBER 2014



LEGEND



WATERFRONT PHASE 1

1. Alaskan Way + Cycle Track (south of Union)
1. Alaskan Way/Elliott Way + Cycle Track (north of Union)
2. Promenade
3. Overlook Walk
4. Marion Street Ped Bridge (Alaskan ROW to Western)
5. Columbia Streetscape
6. Seneca Restoration (WSDOT only)
7. Blanchard ROW
8. Lenora Street Bridge Improvement
9. Waterfront Park
10. Lower Union + Western Intersection
11. Pike Pine Improvements
12. Main + Washington Streets



FUTURE PHASE

1. Pier 62/63
2. Floating Dock
3. Middle Union
4. Seneca Streetscape
5. Blanchard Overlook
6. Marion Street Ped Bridge (Western to First)
7. Pool Barge



RELATED PROJECTS

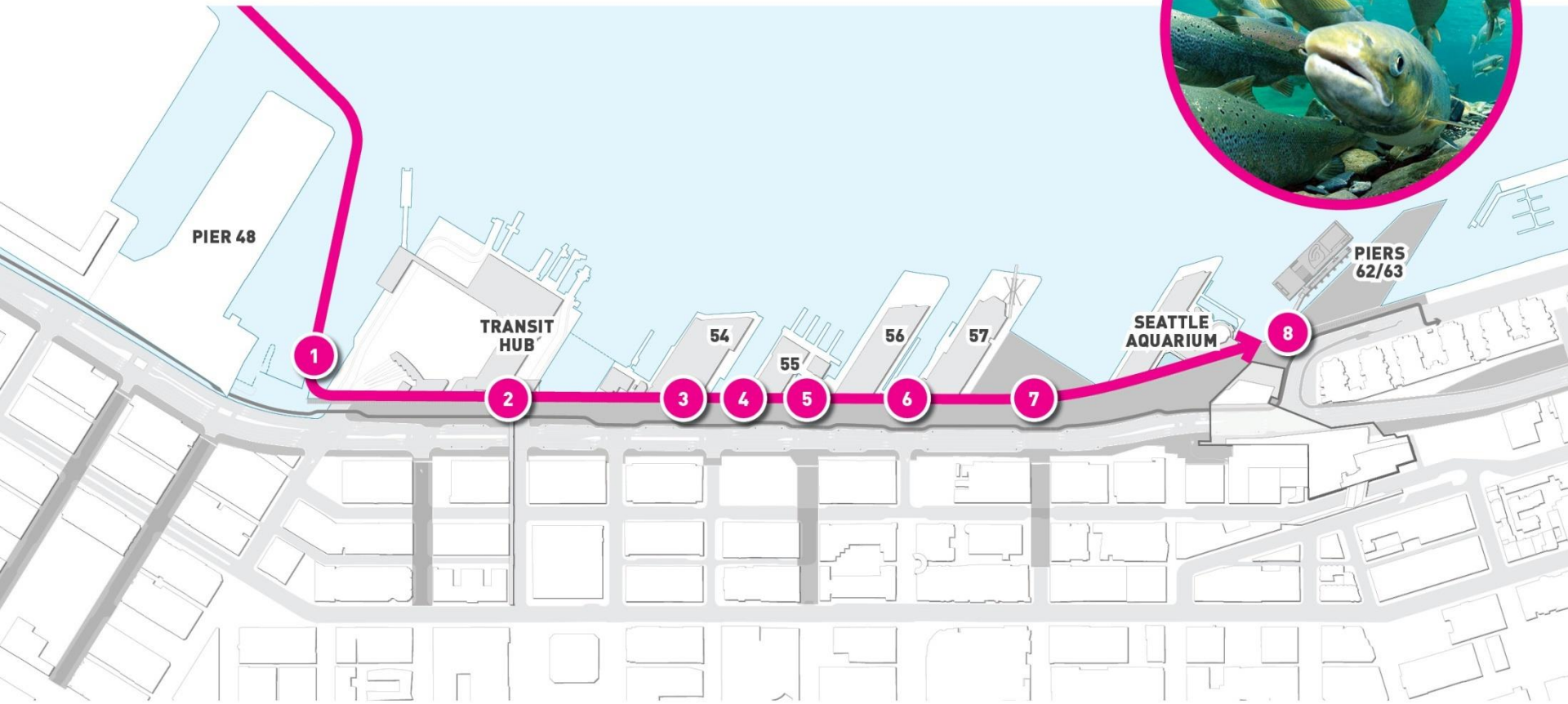
- Seawall Related Elements
- Aquarium Expansion
- PC-1 / PPM Entrance
- Bell Street Improvements
- North Portal Site Park
- Pike Street Hill Climb Improvements
- Blanchard Opportunity Site



Stephen Vitiello
Land Buoy Bells concept drawing

PERMANENT PROJECTS

WATERFRONT 2020
SEAWALL PROJECT
SALMON MIGRATION CORRIDOR



WATERFRONT 2020

PIONEER SQUARE

HABITAT BEACH: HIGH TIDE

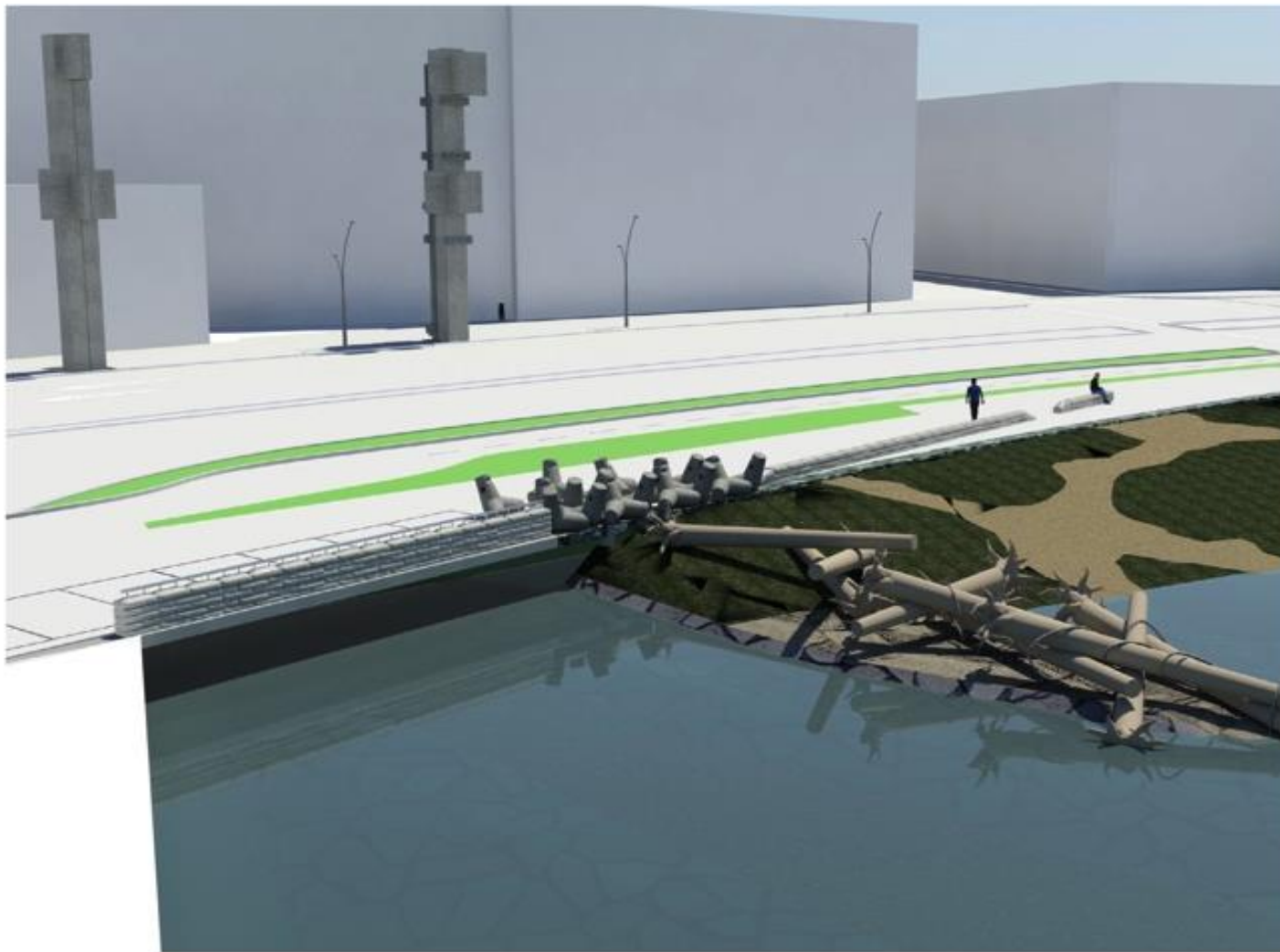
KEY MAP



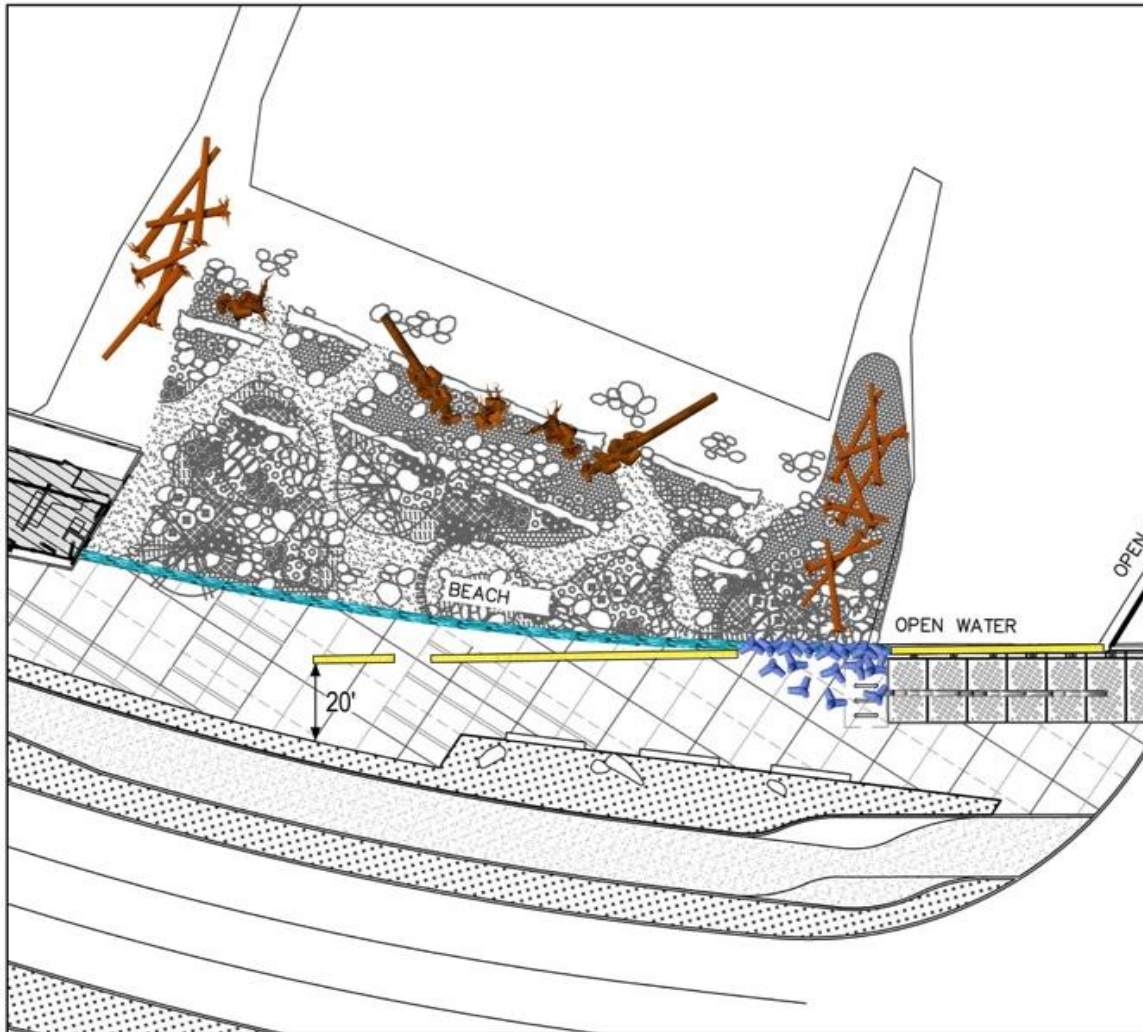


Secured Embrace, 2013

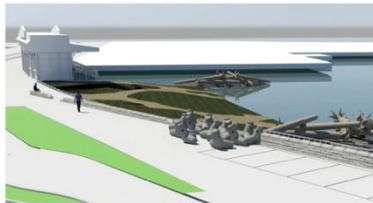
BUSTER SIMPSON: ANTHROPOCENE BEACH



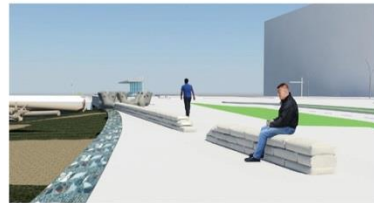
BUSTER SIMPSON: ANTHROPOCENE BEACH



BUSTER SIMPSON: ANTHROPOCENE BEACH



Installation of Anthropoids looking southwest



Installation looking north



Installation looking northwest



Elevation view of Anthropoid installation and Limestone/Marble "Sand Bags"



Plan view of Anthropoid installation and Limestone/Marble "Sand Bags"



Dolos as shoreline armor



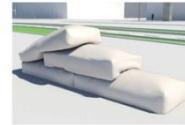
Secured Embrace, Frye Art Museum



Seating appropriate



Military foxholes using concrete bags



Study of Seawall Seating

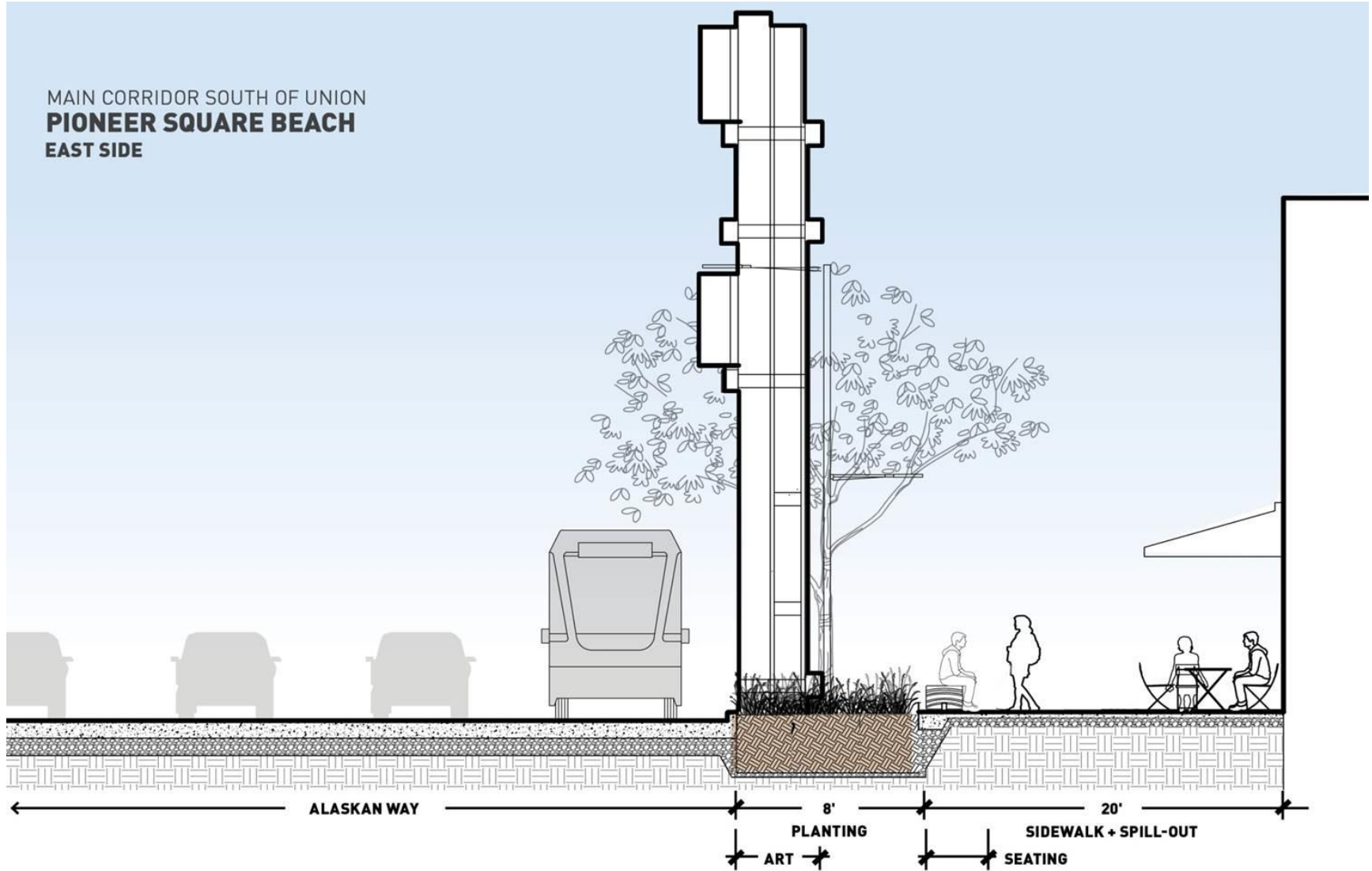
Elliott Bay  Seawall	ANTHROPOCENE BEACH // ZONE 1	60% DESIGN DEVELOPMENT	PA-04	2014-10-14
© 2014 Buster Simpson 301 Yakima Avenue South, Seattle, WA 98144 206.328.6212 tel & fax buster@bustersimpson.net www.bustersimpson.net				

BUSTER SIMPSON: ANTHROPOCENE BEACH



BUSTER SIMPSON: ANTHROPOCENE BEACH

MAIN CORRIDOR SOUTH OF UNION
PIONEER SQUARE BEACH
EAST SIDE



MAIN CORRIDOR SOUTH OF UNION
PIONEER SQUARE BEACH
VIEW LOOKING NORTH AT S. WASHINGTON





OSCAR TUAZON

Kodiak, Seattle Art Museum, 2008



OSCAR TUAZON

Kunsthalle Bern, 2010



OSCAR TUAZON

Kunsthalle Bern, 2010

OSCAR TUAZON

Daybreak Star, 2010





OSCAR TUAZON

Oscar Tuazon, *For Hire*, 2012.
Installation view at Whitney Biennial

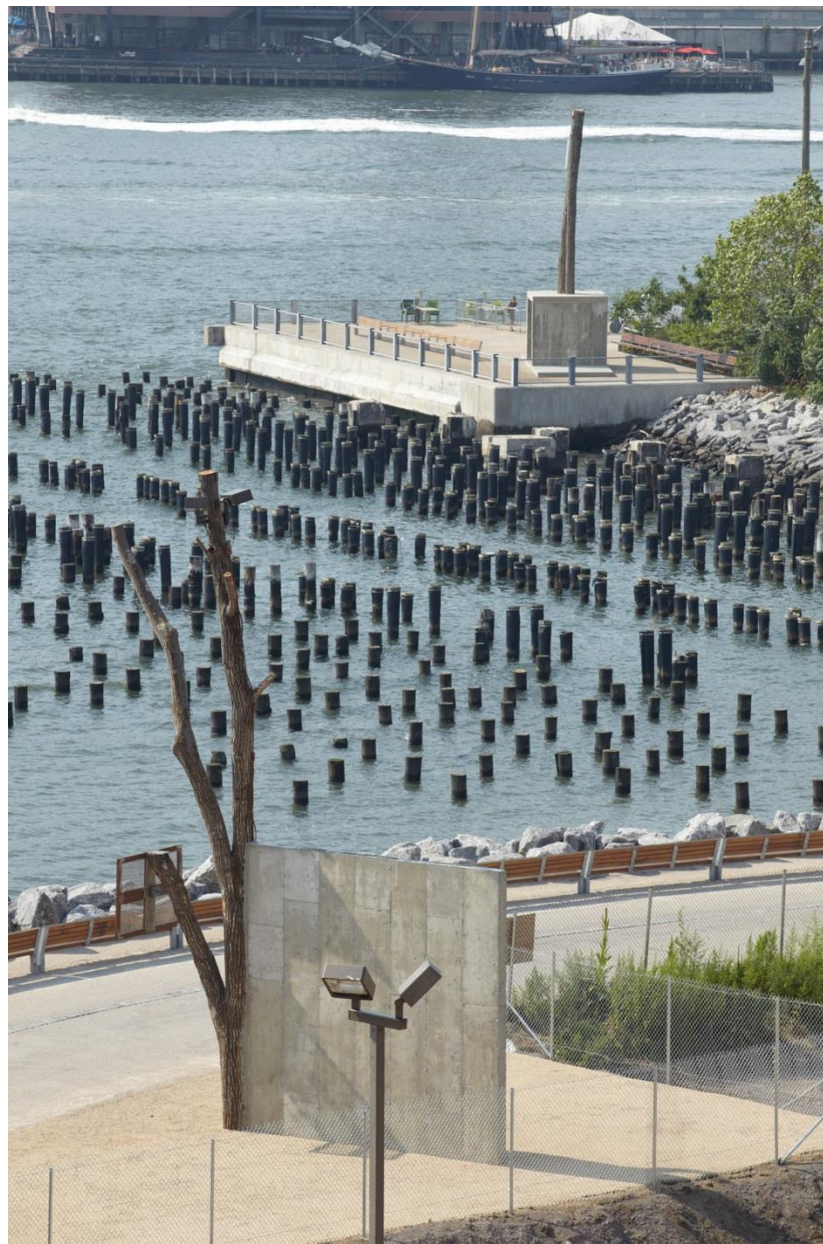


OSCAR TUAZON

K8 Hardy, *Untitled Runway Show*, 2012,
Whitney Biennial.
Performed on Oscar Tuazon, *For Hire*, 2012.

OSCAR TUAZON

People and The Rain,
Brooklyn Bridge Park, 2012





OSCAR TUAZON

People, Brooklyn Bridge Park, 2012



OSCAR TUAZON

Belfort memorial, 2015



OSCAR TUAZON

Belfort memorial, 2015



OSCAR TUAZON



OSCAR TUAZON



OSCAR TUAZON

Seneca St. offramp



OSCAR TUAZON

Seneca St. offramp



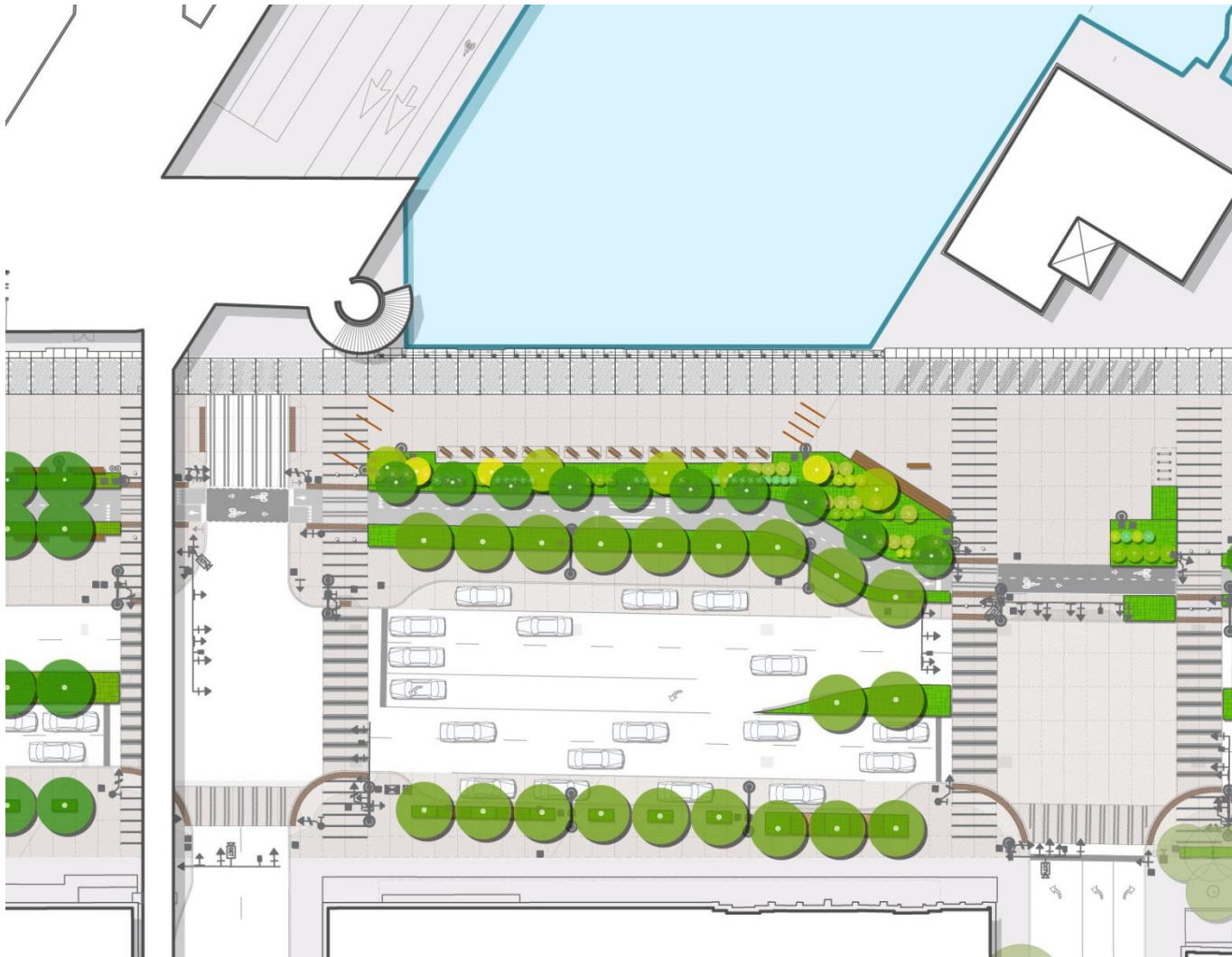
OSCAR TUAZON

**Marion Street Bridge and
Firehouse Slip**



OSCAR TUAZON

Firehouse Slip



OSCAR TUAZON

**Marion Street Bridge and
Firehouse Slip**



UNION STREET: NORIE SATO

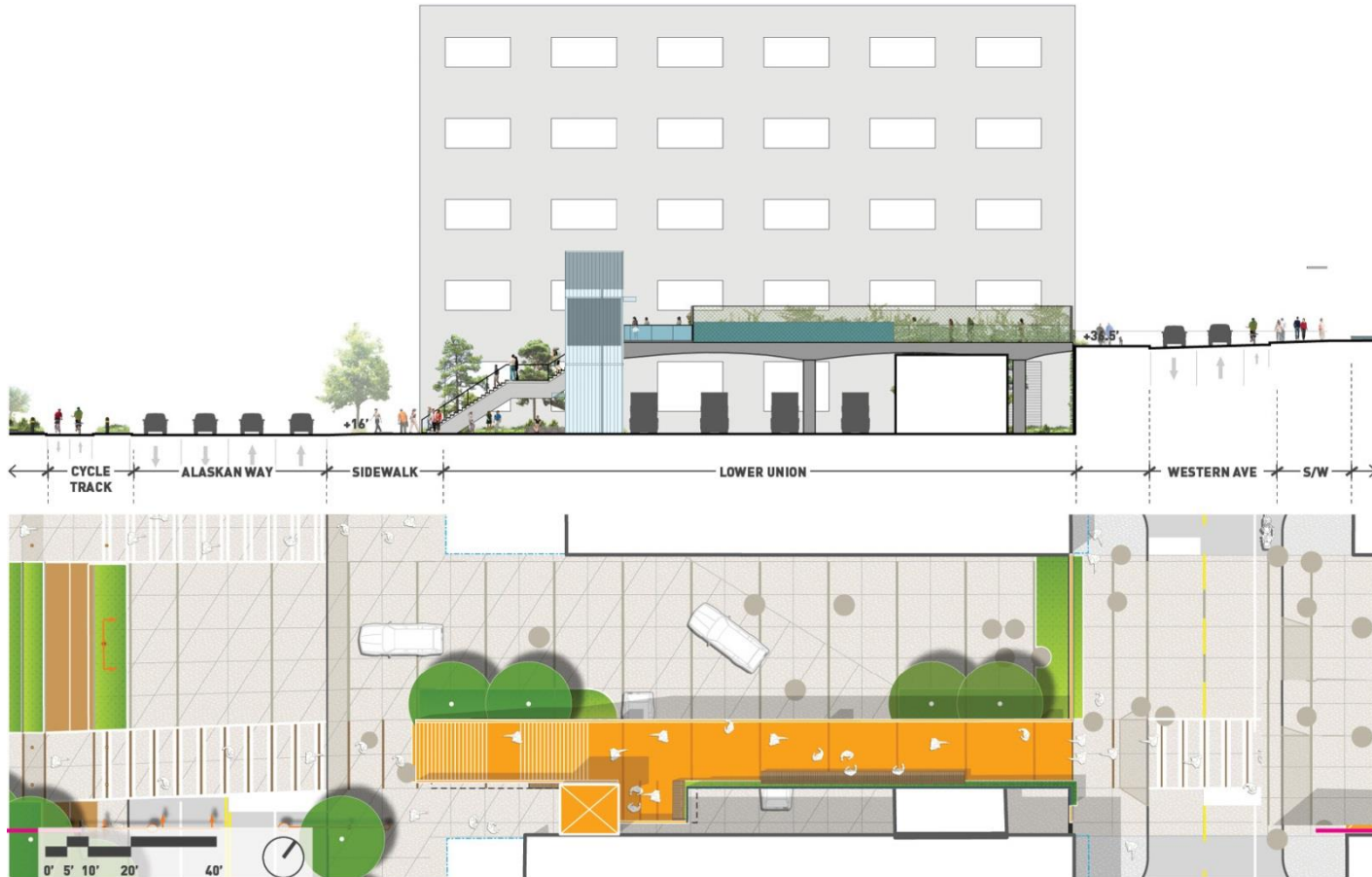


Traveling Stones

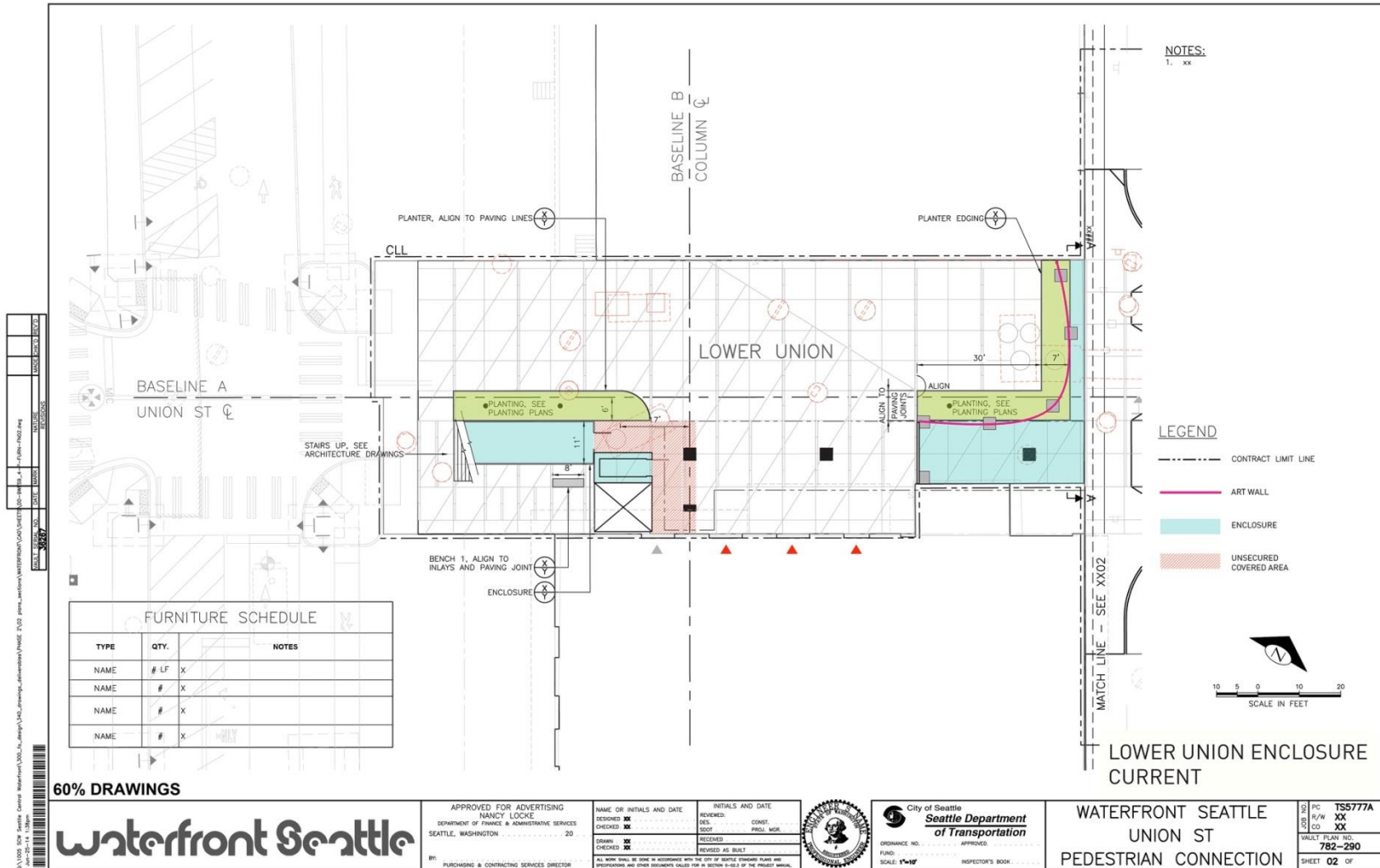


Braid

UNION STREET: NORIE SATO



UNION STREET: NORIE SATO



UNION STREET: NORIE SATO

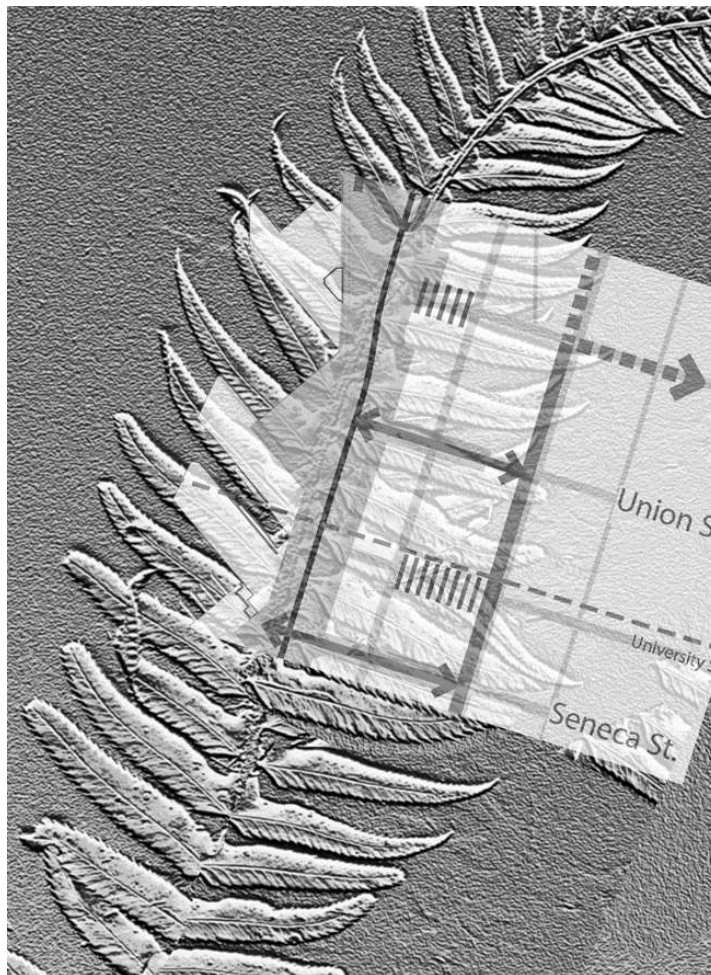
UNION STREET DESIGN
ALASKAN WAY
VIEW EAST TO DOWNTOWN



UNION STREET: NORIE SATO



UNION STREET: NORIE SATO



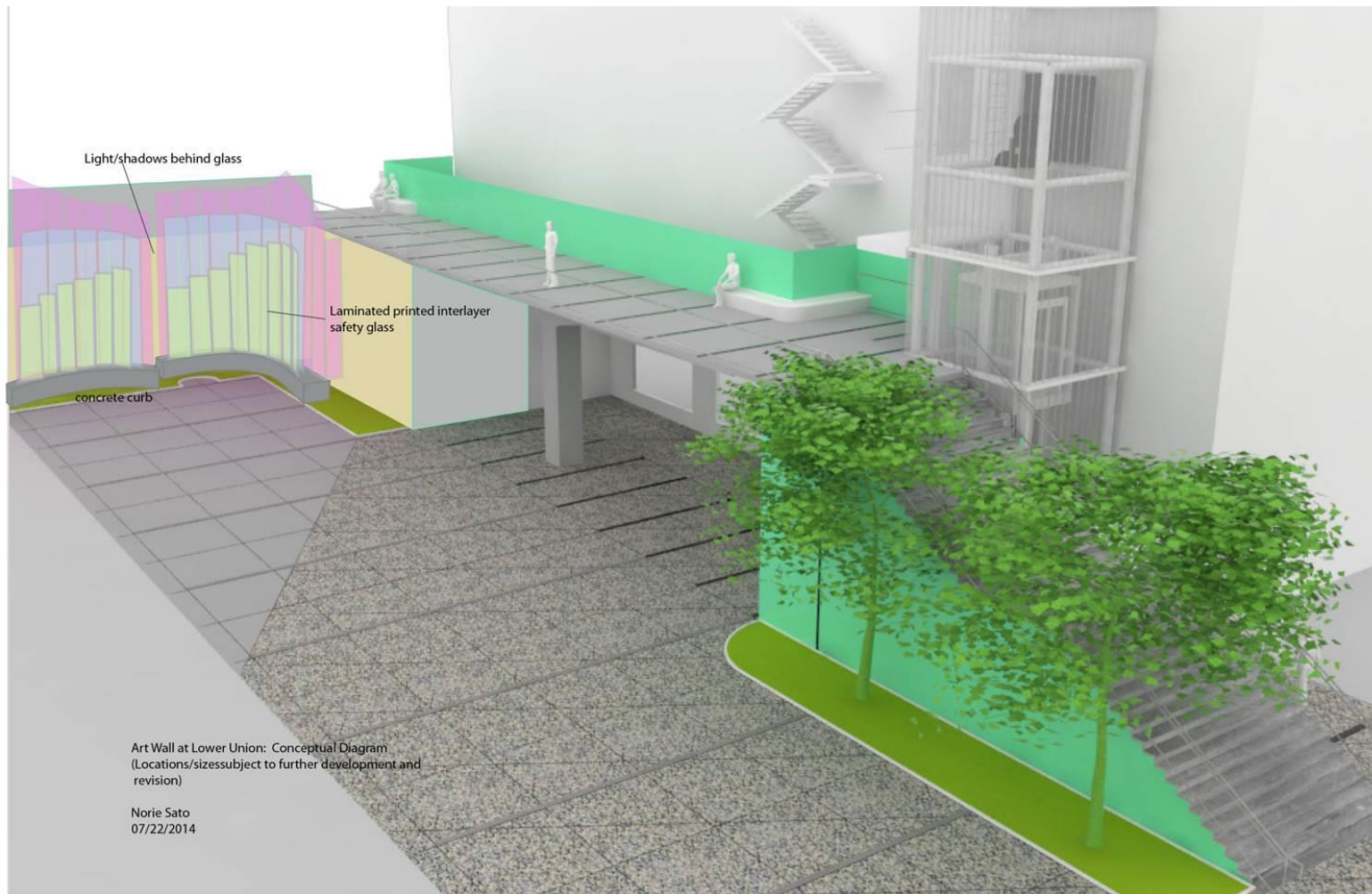
UNION STREET: NORIE SATO



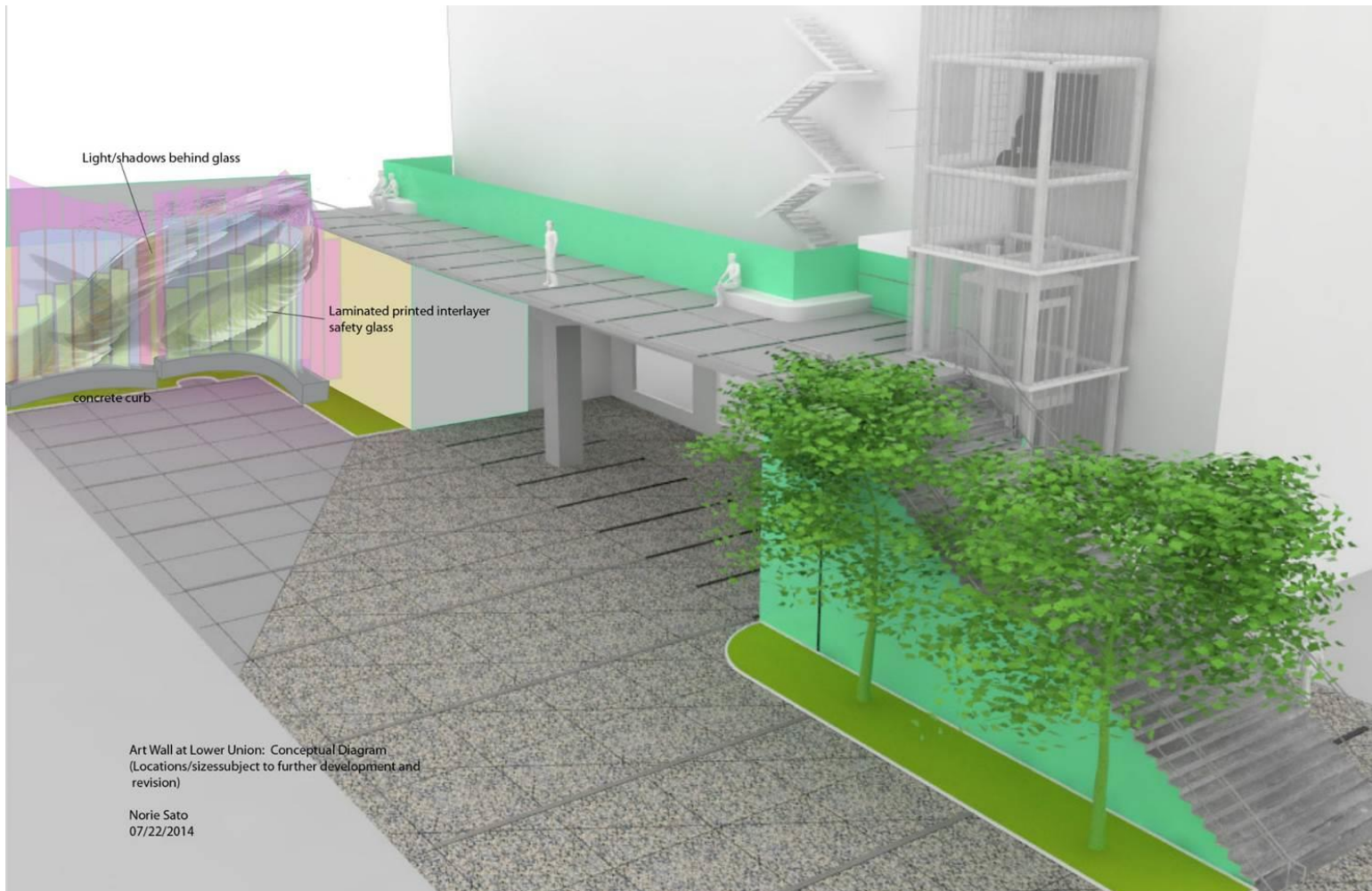
UNION STREET: NORIE SATO



UNION STREET: NORIE SATO



UNION STREET: NORIE SATO



UNION STREET: NORIE SATO



CEDRIC BOMFORD: PLAY

Deadhead, Vancouver, BC, 2014



CEDRIC BOMFORD: PLAY

Deadhead, Vancouver, BC, 2014



CEDRIC BOMFORD: PLAY

Palast der Republik II, 2005



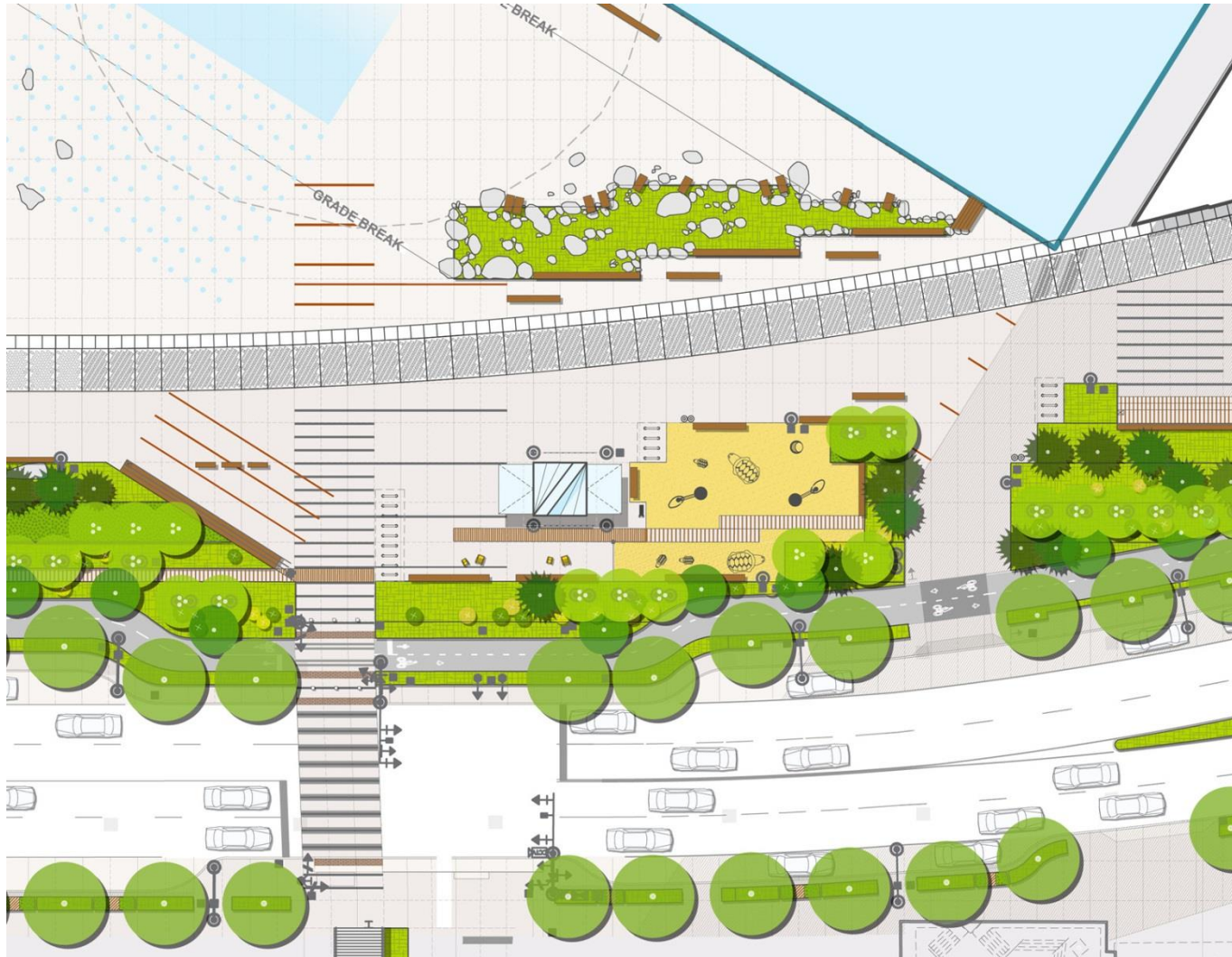
CEDRIC BOMFORD: PLAY

Prague Air Vent, 2010



CEDRIC BOMFORD: PLAY

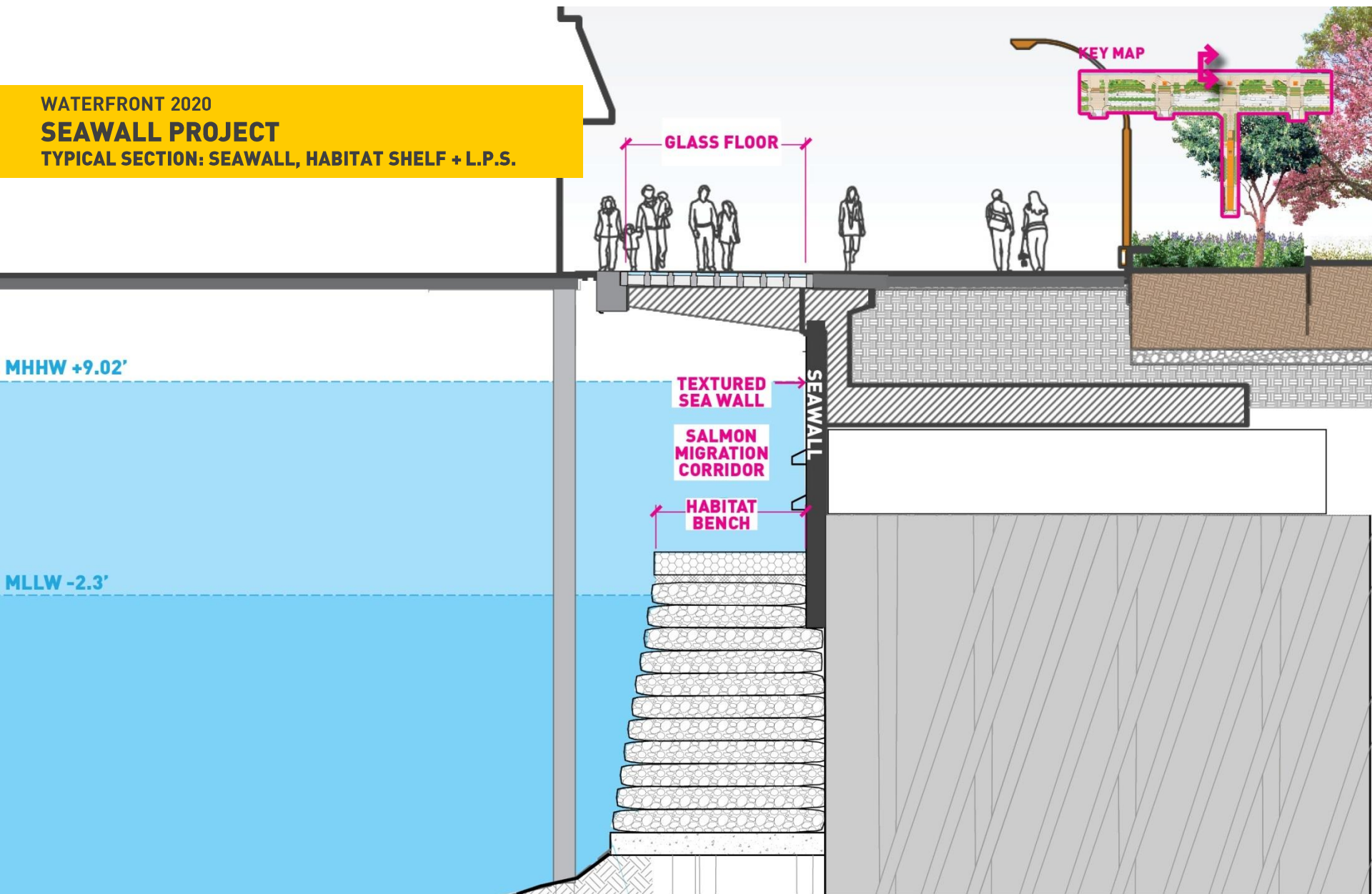
Das Amt, 2010



CEDRIC BOMFORD: PLAY

Union Street Play Area

WATERFRONT 2020
SEAWALL PROJECT
TYPICAL SECTION: SEAWALL, HABITAT SHELF + L.P.S.





SEAWALL FACE PANELS



HADDAD/DRUGAN: SEAWALL PANELS



HADDAD/DRUGAN: SEAWALL PANELS



HADDAD/DRUGAN: SEAWALL PANELS



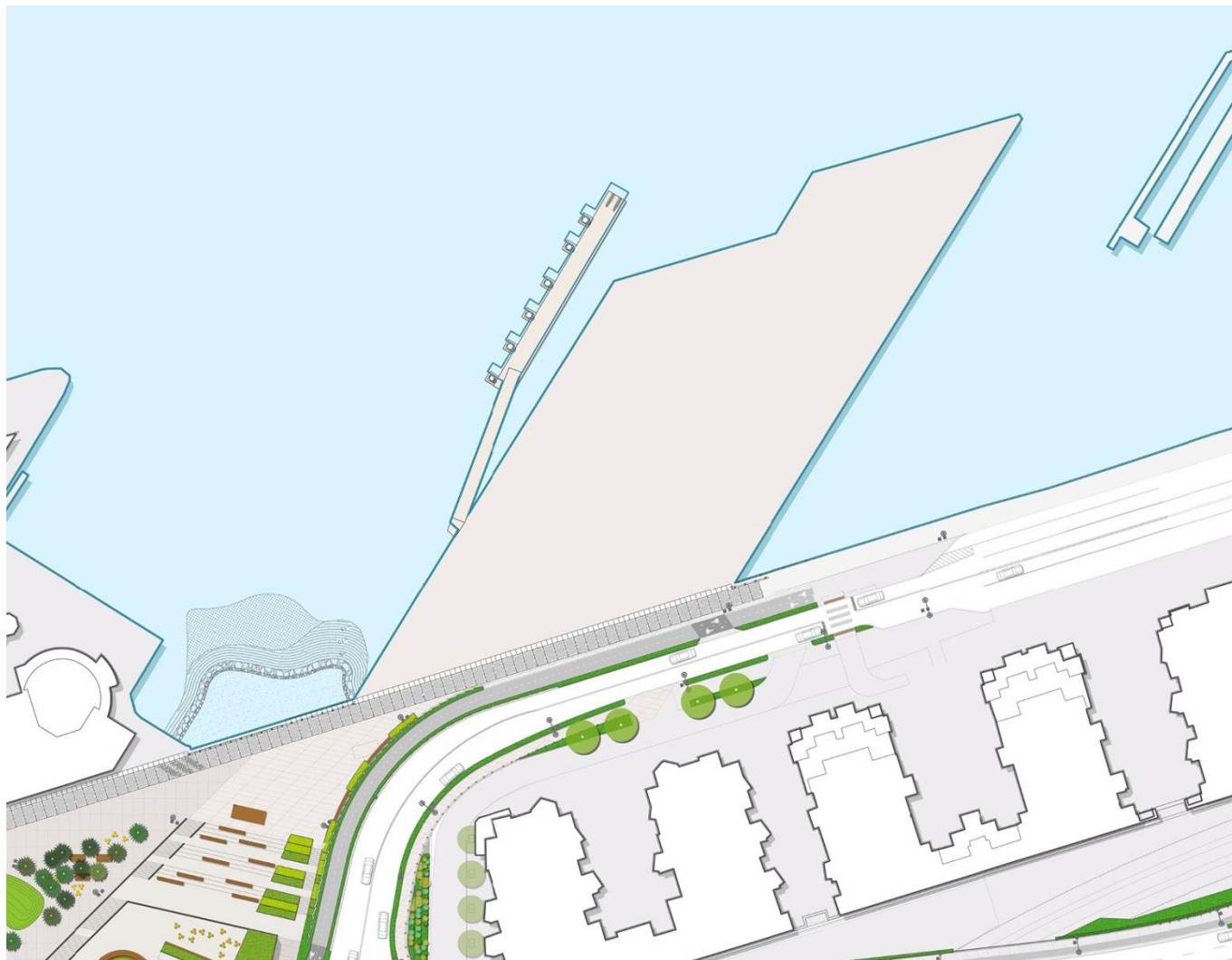
A Bell for Every Minute, 2010-2011, The High Line, New York

STEPHEN VITIELLO: SOUND



Vitiello team on Pier 62/63

STEPHEN VITIELLO: SOUND



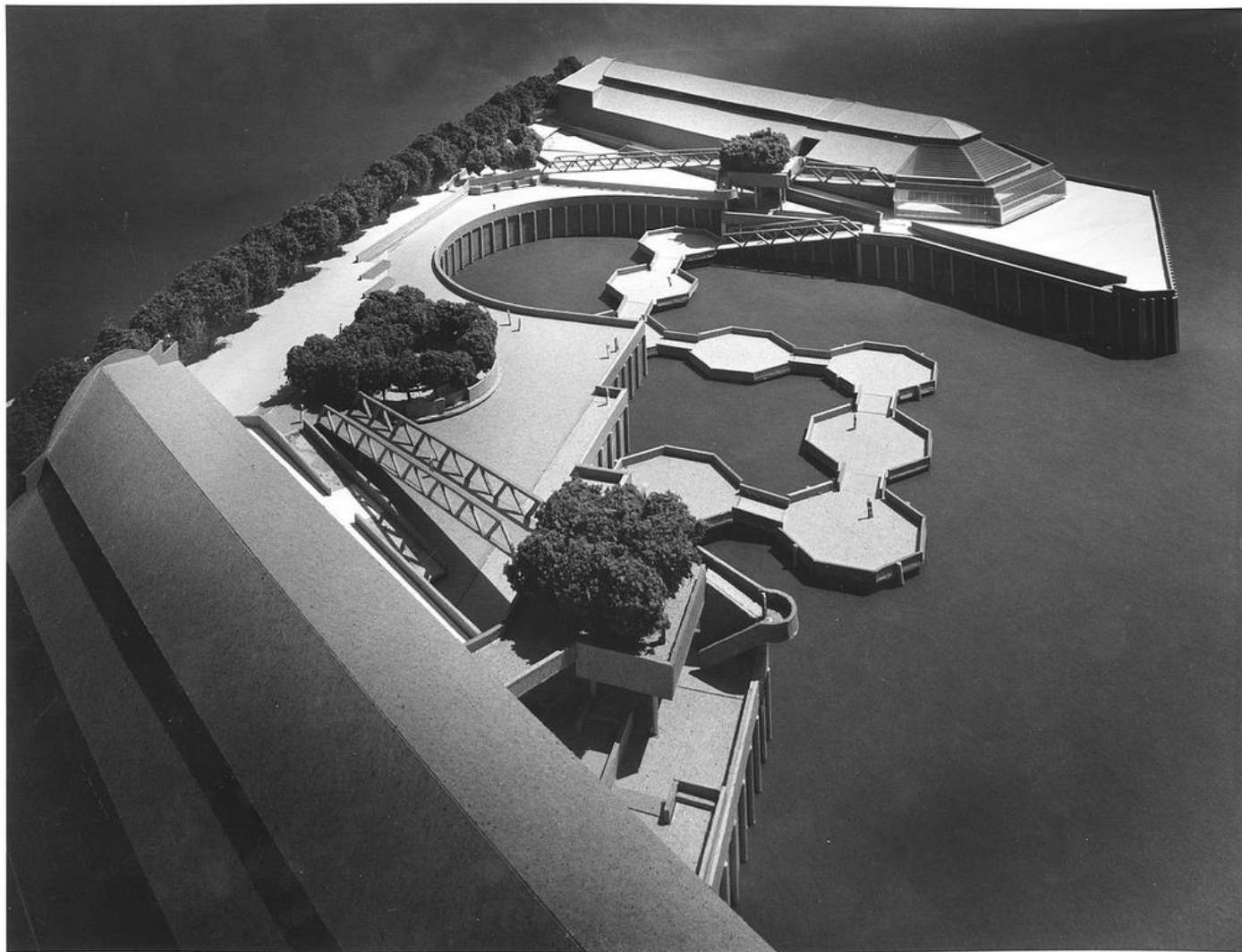
STEPHEN VITIELLO: SOUND

Floating Dock, Pier 62/63



STEPHEN VITIELLO: SOUND

Floating Dock, Pier 62/63



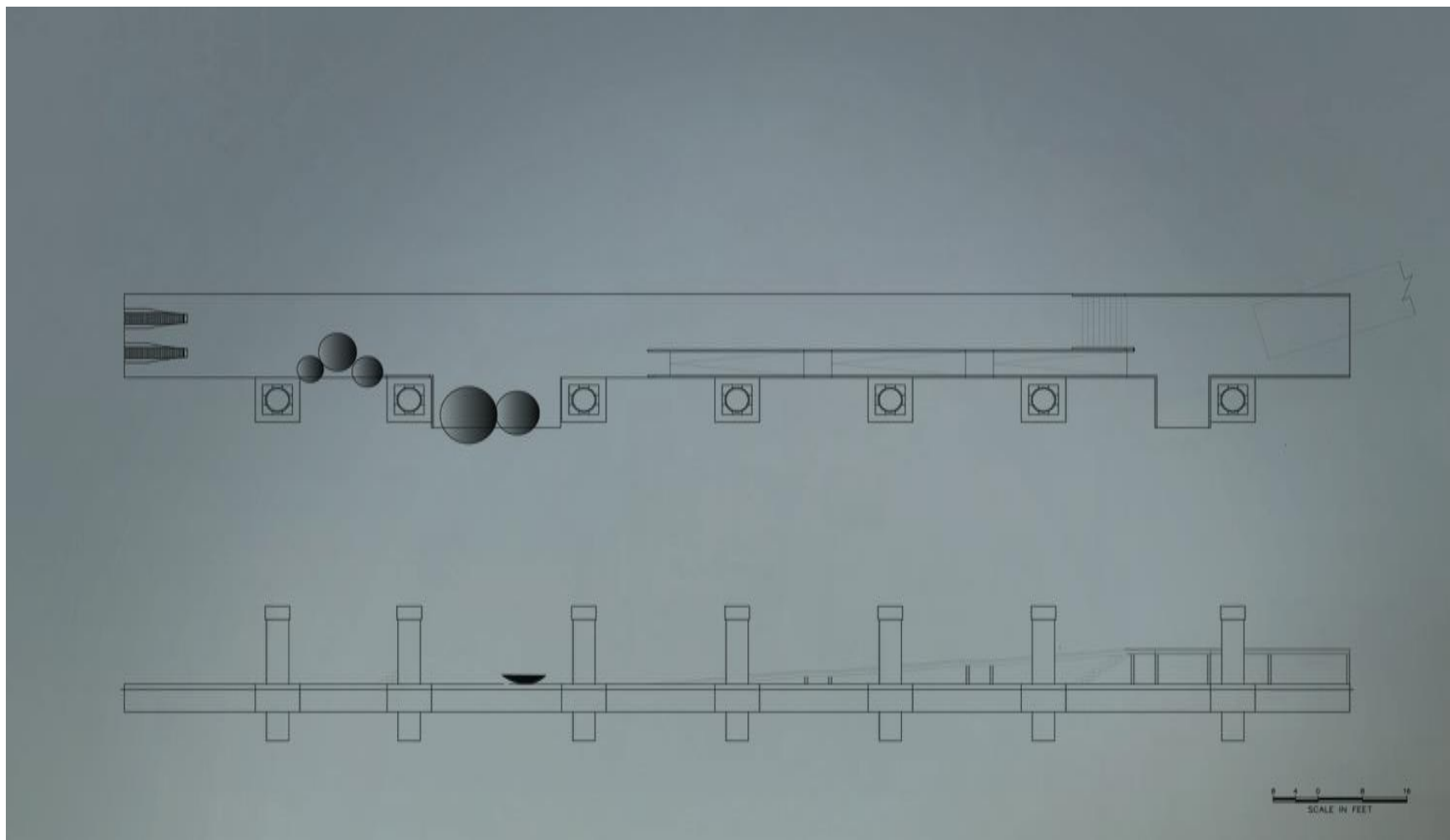
STEPHEN VITIELLO: SOUND

Waterfront Park model



Land Buoy Bells concept drawing

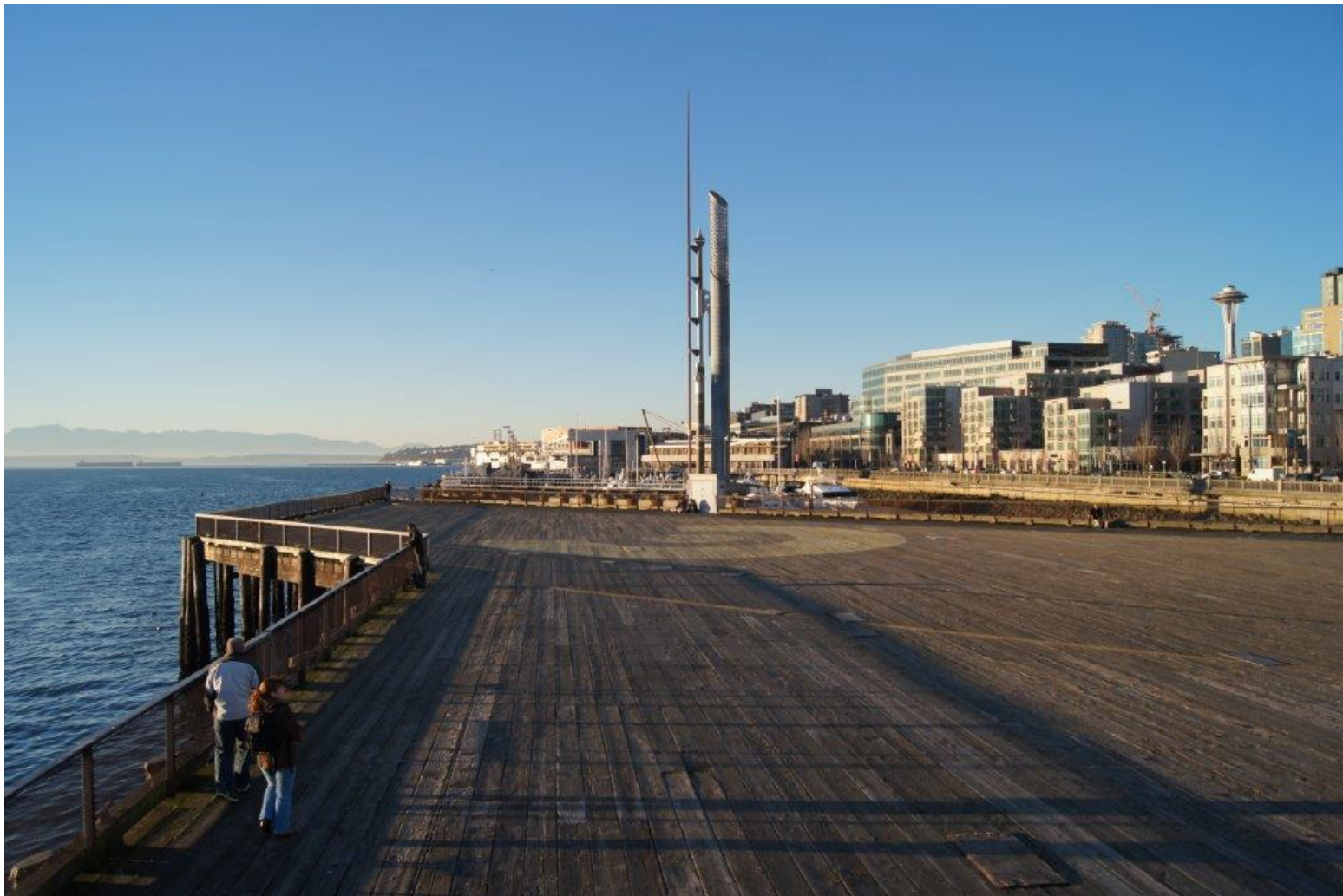
STEPHEN VITIELLO: SOUND



STEPHEN VITIELLO: SOUND *Land Buoy Bells* plan and section



ANN HAMILTON: PUBLIC PIERS



PIER PROJECT: ANN HAMILTON



PIER PROJECT: ANN HAMILTON



PIER PROJECT: ANN HAMILTON

*LEW Wood Floor, 2004,
Seattle Central Library*



PIER PROJECT: ANN HAMILTON *the event of a thread,*
2012



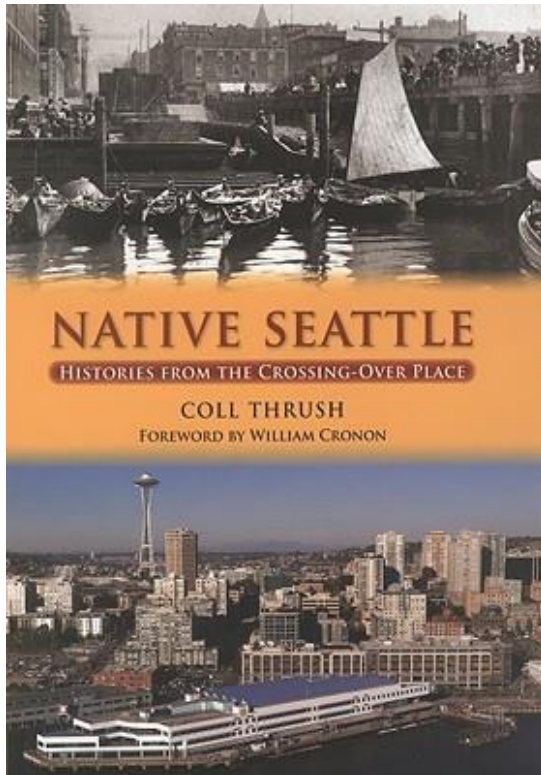
**Ed Carriere: split cedar root and
cedar limb fishing weir**

CURRENT CALL: TRIBAL ARTWORK



Joshua Beckman, excerpt from
The Inside of an Apple

BETWEEN NOW AND THEN



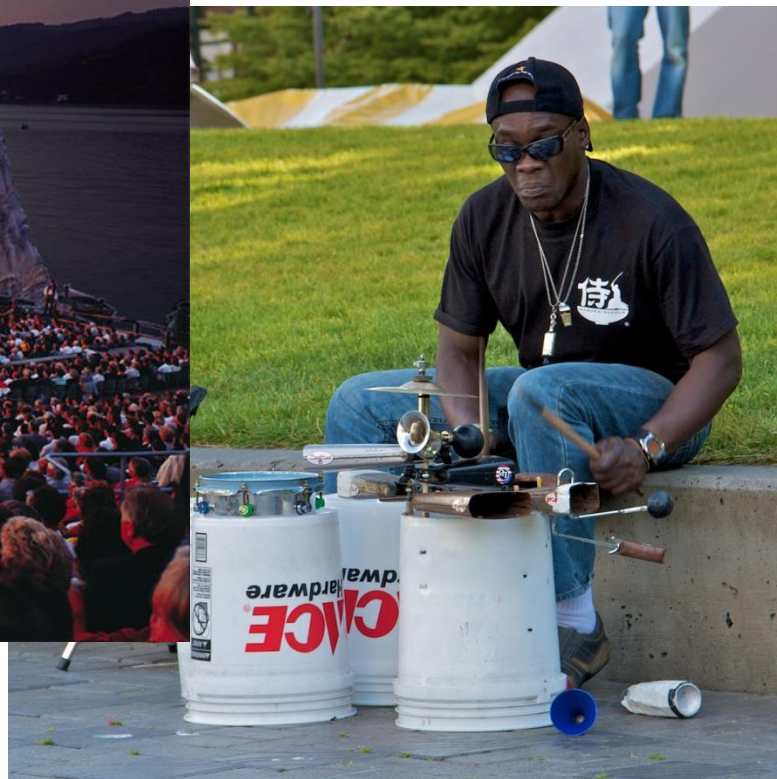
TALKS, CONFERENCES, EVENTS



CONFERENCE ON ART, DESIGN & PLAY



WATERFRONT SPACE



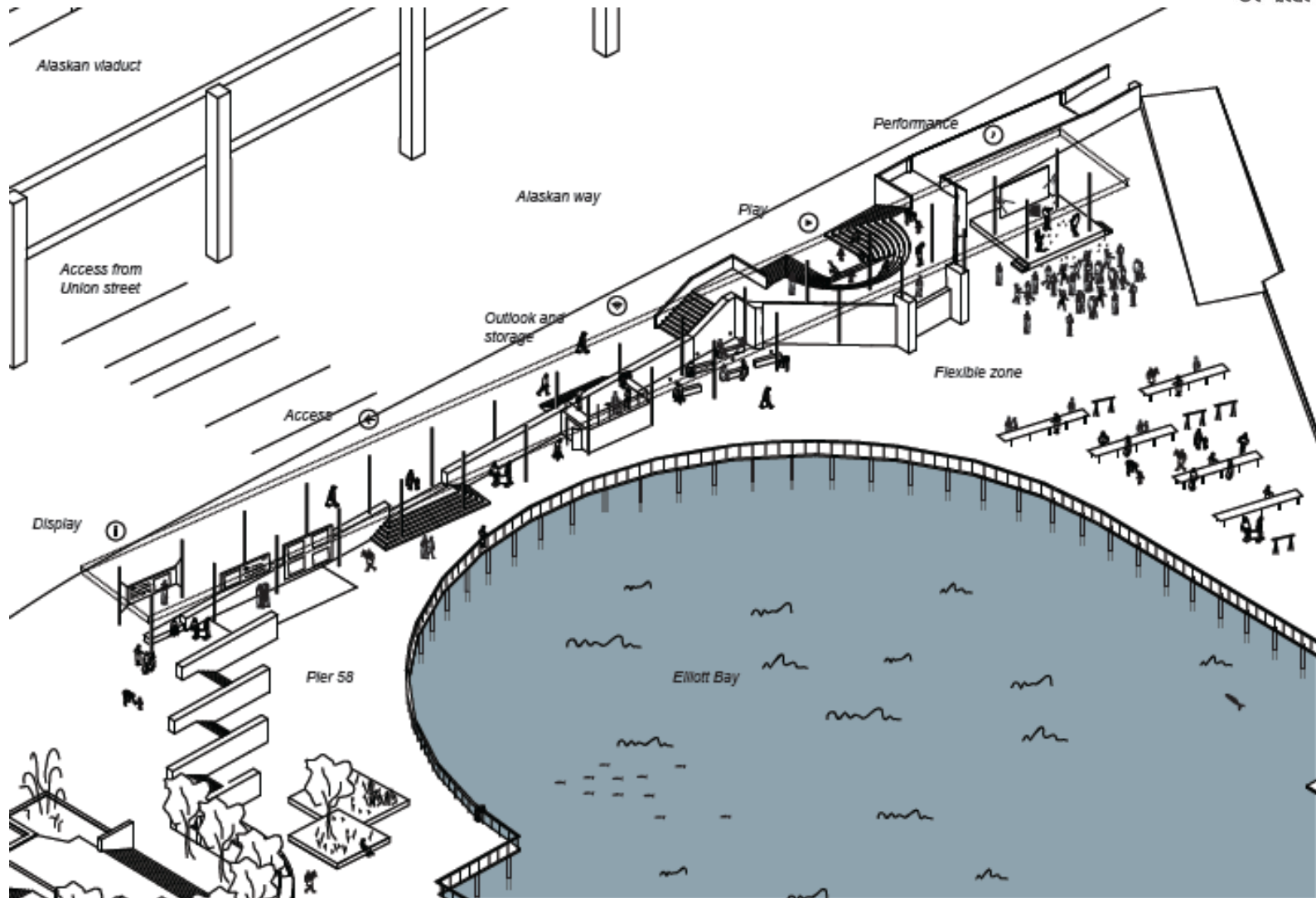
WATERFRONT CULTURAL PROGRAMMING TASK FORCE



WATERFRONT CULTURAL PROGRAMMING TASK FORCE



WATERFRONT PARK HOT SPOT: SUMMER 2015



WATERFRONT PARK HOT SPOT: EDGE



WATERFRONT PARK HOT SPOT: EDGE



WATERFRONT PARK HOT SPOT: EDGE

86



LOW RES PHOTO 1: EIRIK JOHNSON



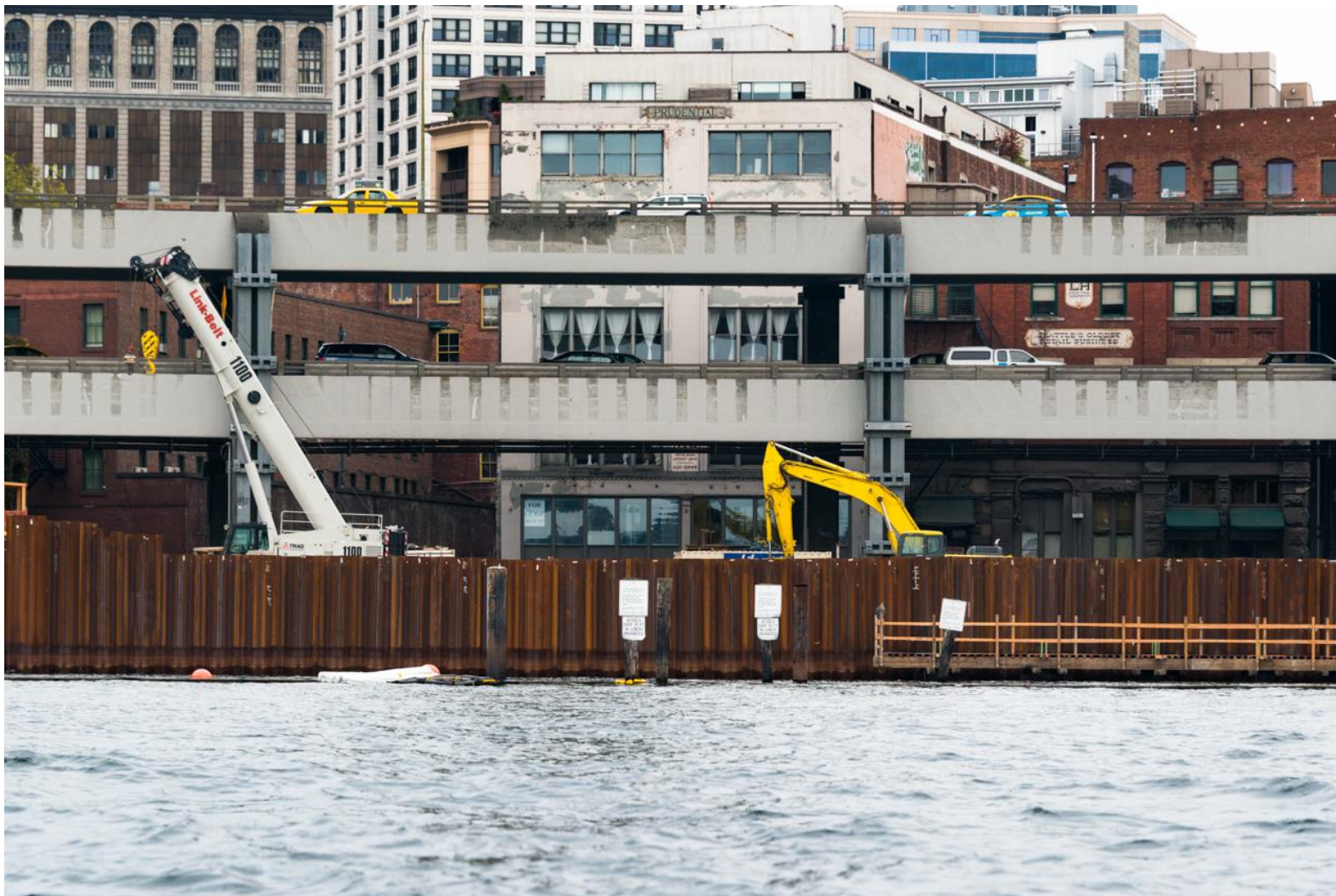
LOW RES PHOTO 1: EIRIK JOHNSON



LOW RES PHOTO 1: EIRIK JOHNSON



LOW RES PHOTO 1: EIRIK JOHNSON



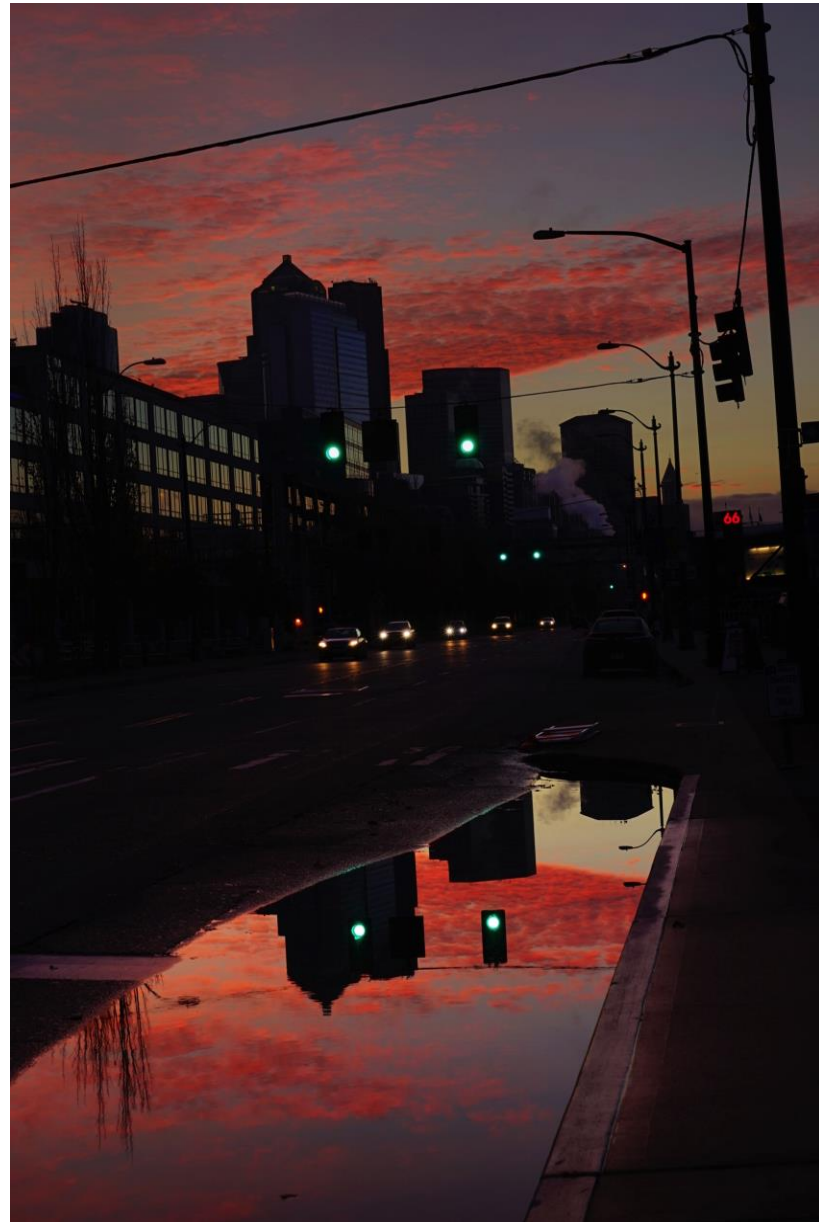
LOW RES PHOTO 1: EIRIK JOHNSON

LOW RES PHOTO 2: ALICE WHEELER

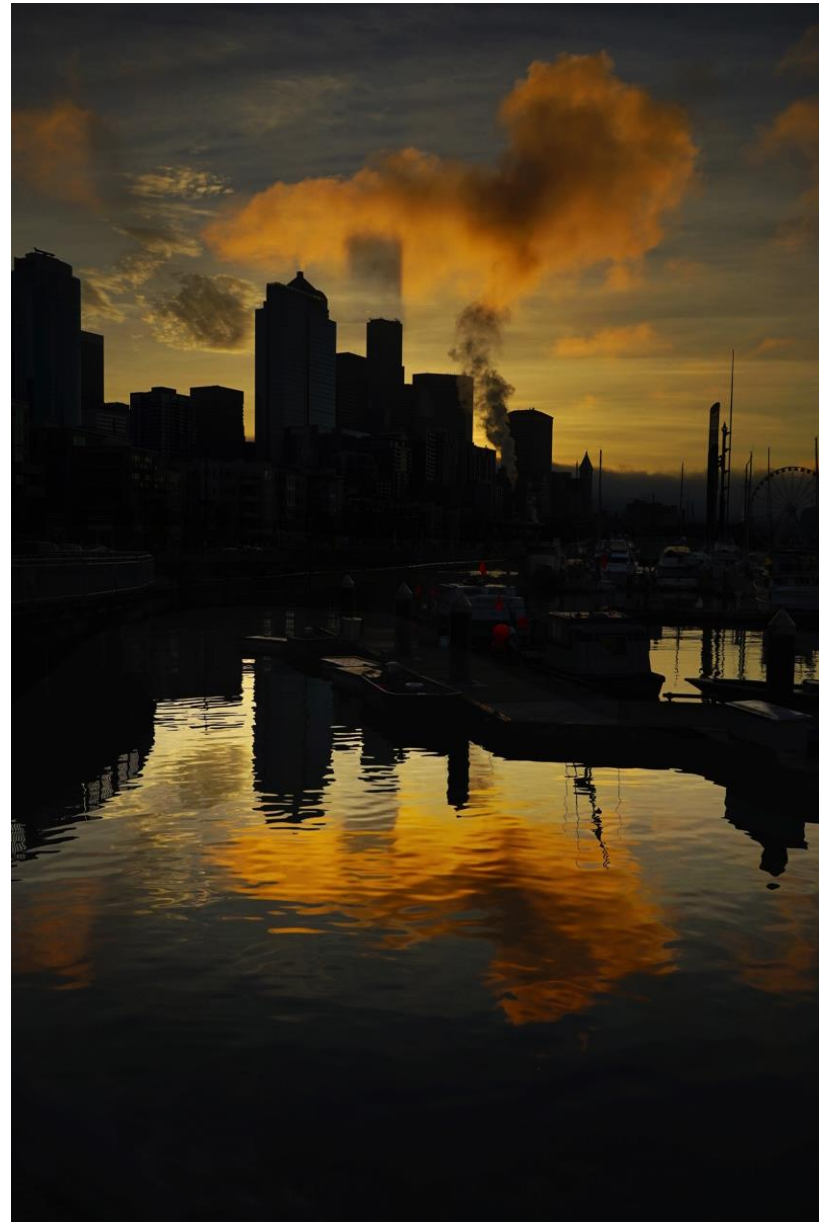


LOW RES PHOTO 2: ALICE WHEELER

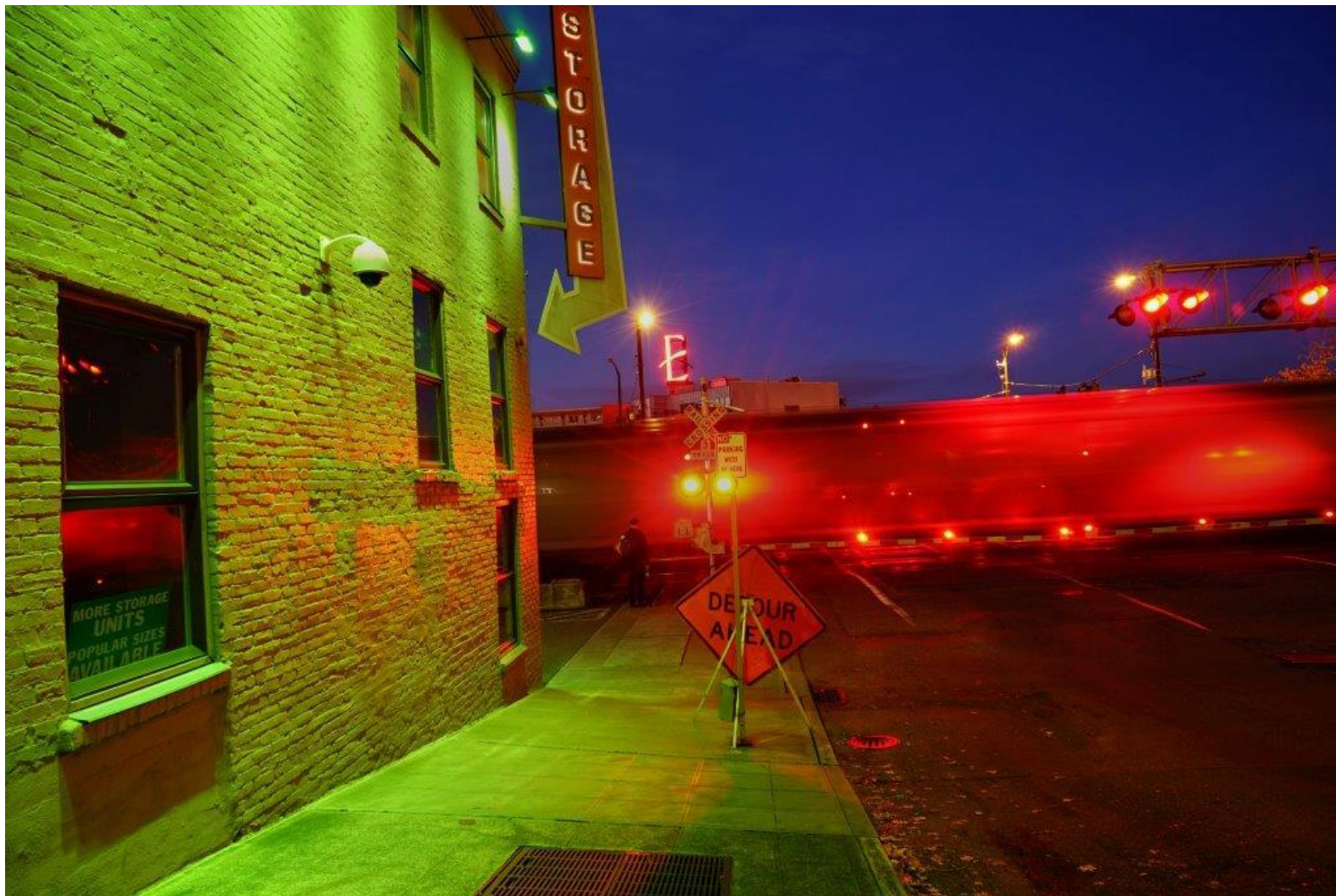




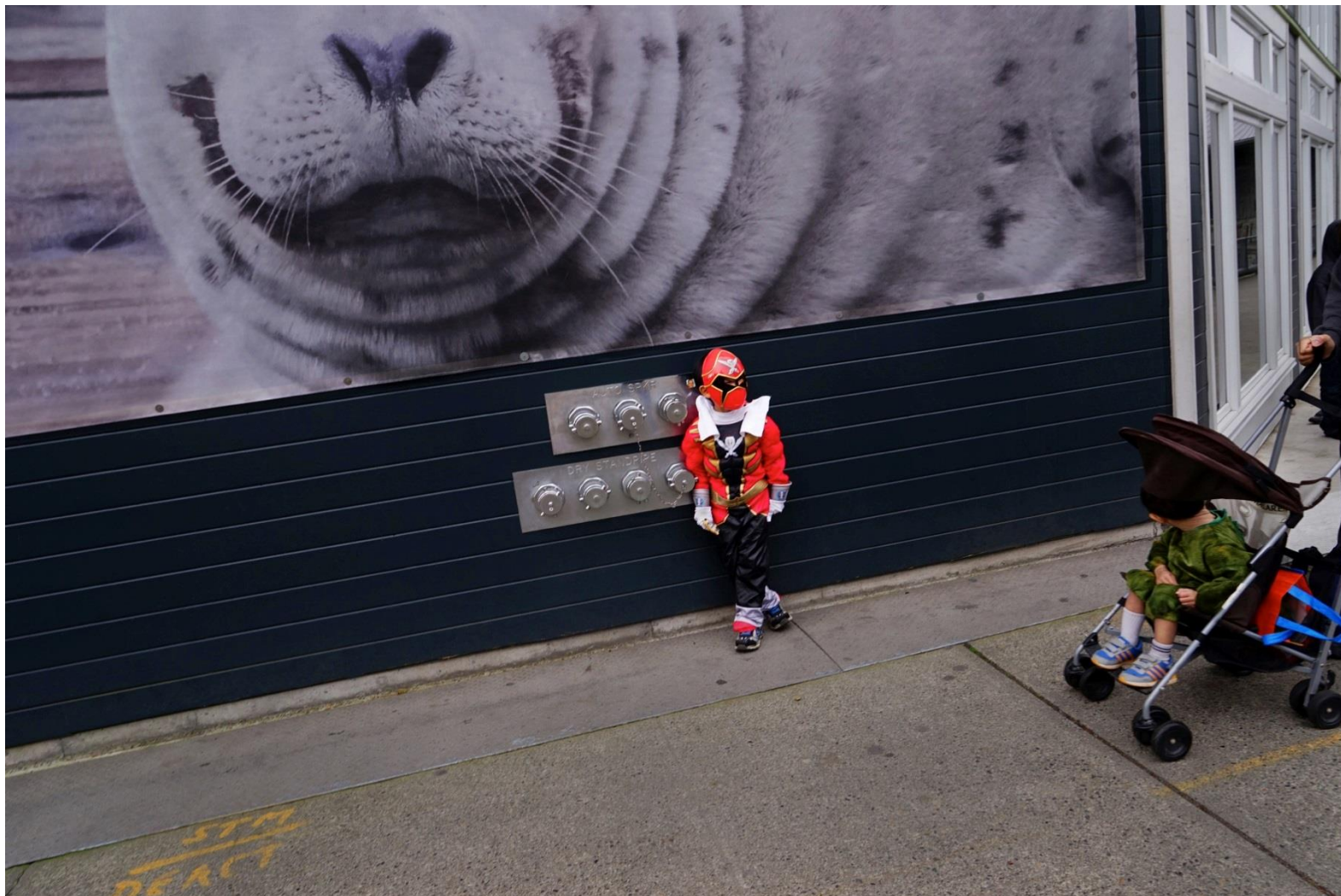
**LOW RES PHOTO 2:
ALICE WHEELER**



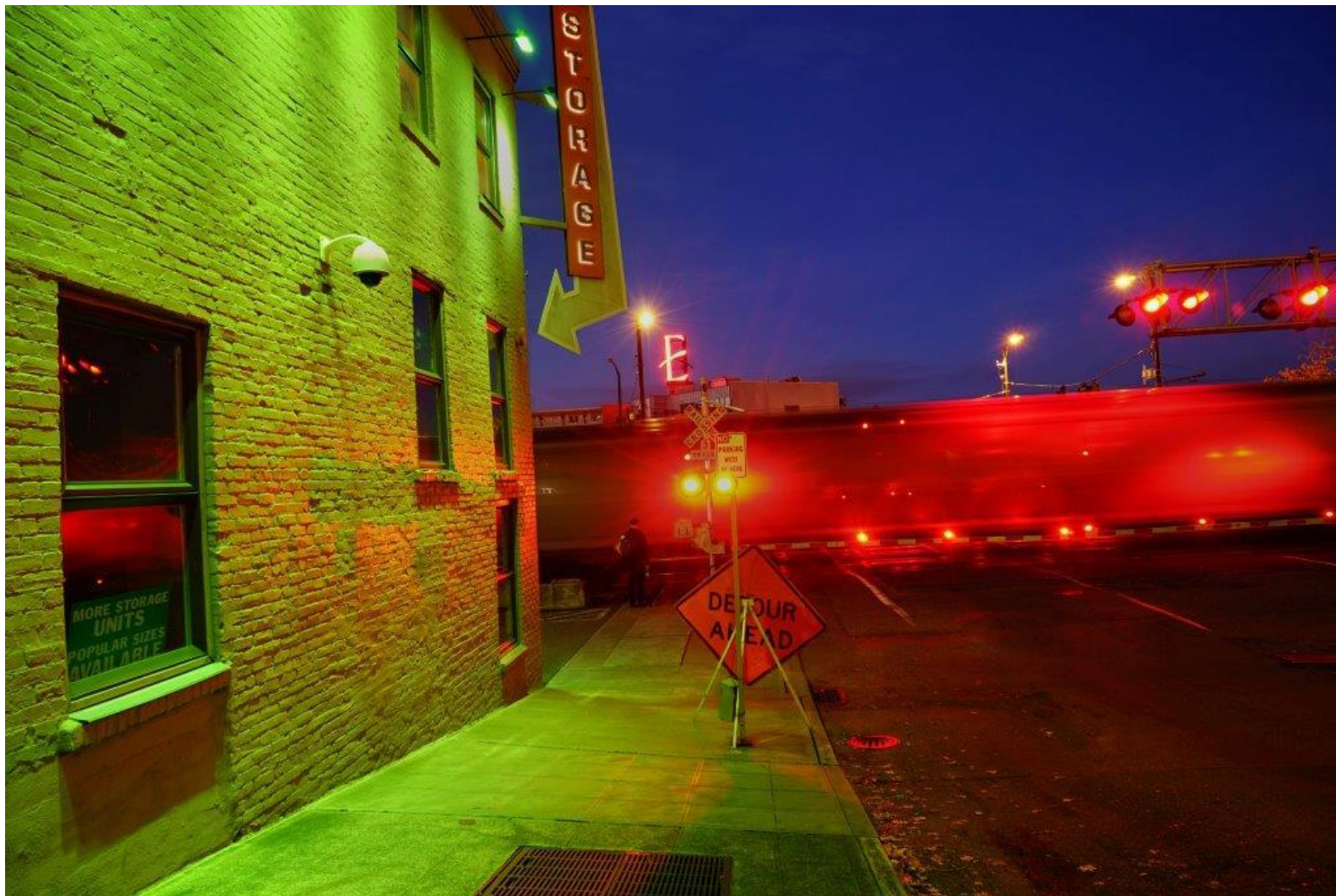
**LOW RES PHOTO 2:
ALICE WHEELER**



LOW RES PHOTO 2: ALICE WHEELER



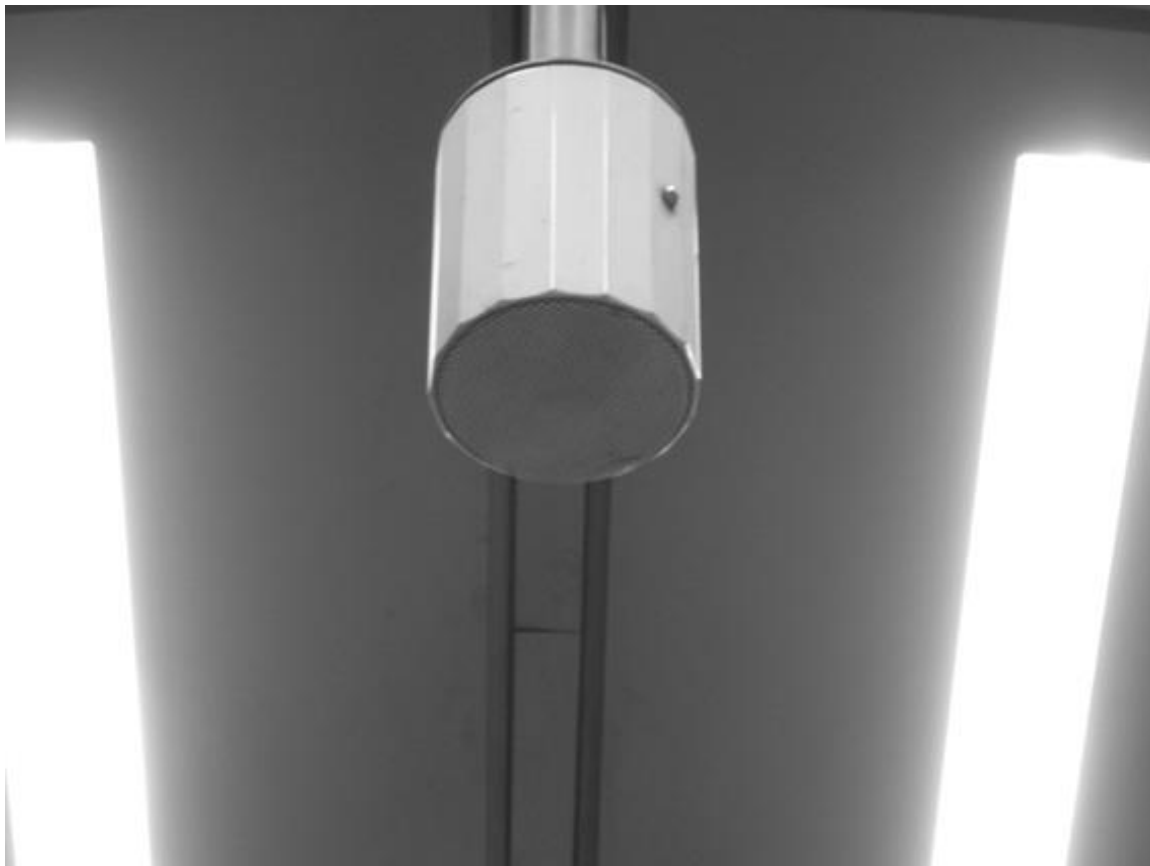
LOW RES PHOTO 2: ALICE WHEELER



LOW RES PHOTO 2: ALICE WHEELER



LOW RES MUSIC 1: LOZEN



Cloud, damp envelope,

diarist. Imperial cloud.

Cloud that will come tomorrow.

Alien cloud. From imperial midnight.

Faucet, invisibly on. Invisibly licking

the diaries. Rain, cloak

& speedway. Midnight,

without hands-

LOW RES POETRY 1: MELANIE NOEL

PERMANENT PROJECTS

COMMISSIONED ARTISTS

- 1 BUSTER SIMPSON**
Anthropocene Beach
- 2 OSCAR TUAZON**
Promenade sculpture
- 3 NORIE SATO**
Union Street artwork
- 4 CEDRIC BOMFORD**
Play artwork
- 5 LAURA HADDAD**
*Seawall face,
habitat shelves*
- 6 STEPHEN VITIELLO**
Land Buoy Bells
- 7 ANN HAMILTON**
Public piers artwork

FUTURE COMMISSION

TRIBAL ART PROJECT

Artist selection winter 2015:
the selected artist will work with our
tribal partners to create a work or works
reflective of Coast Salish cultures



TEMPORARY PROJECTS

CONFERENCE ON PLAY

Artists, designers and
historians on the intersections
of art, design and play

Held March 7-8, Seattle Art
Museum and Seattle City Hall

HOTSPOT

Temporary performance
venue and hangout designed
and built by UW architecture
studio in Waterfront Park,
summer 2015

LOW RES

Artists in a variety of media,
genres, ages, cultures
develop projects during
short-term waterfront
residencies

PHOTOGRAPHY

Cohort of photographers
create digital archives
and print portfolios of
the waterfront during
construction

WATERFRONT TALKS

Quarterly presentations
on waterfront themes