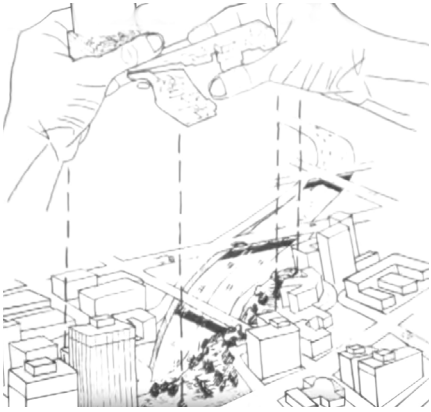






PARK HISTORY



1968

Freeway Park receives funding and design is developed by Lawrence Halprin and Angela Danadjieva



1976

Freeway Park opens



1982

Pigott Corridor addition to the southeast corner of the park



1988

Pike Street Gateway added with the construction of the WSCC



FREWAY PARK
ASSOCIATION

1993

Freeway Park Association founded to steward and manage the Park



2005

Project for Public Spaces reports design and management recommendations for the Park



2010

Freeway Park planting design is revised



2017

Finding Freeway Park project begins



FREEWAY PARK

The Challenge

Freeway Park is Seattle's best kept secret. The Park is hard to find and is often perceived as unsafe while its facilities are inadequate for a 21st century urban center park.

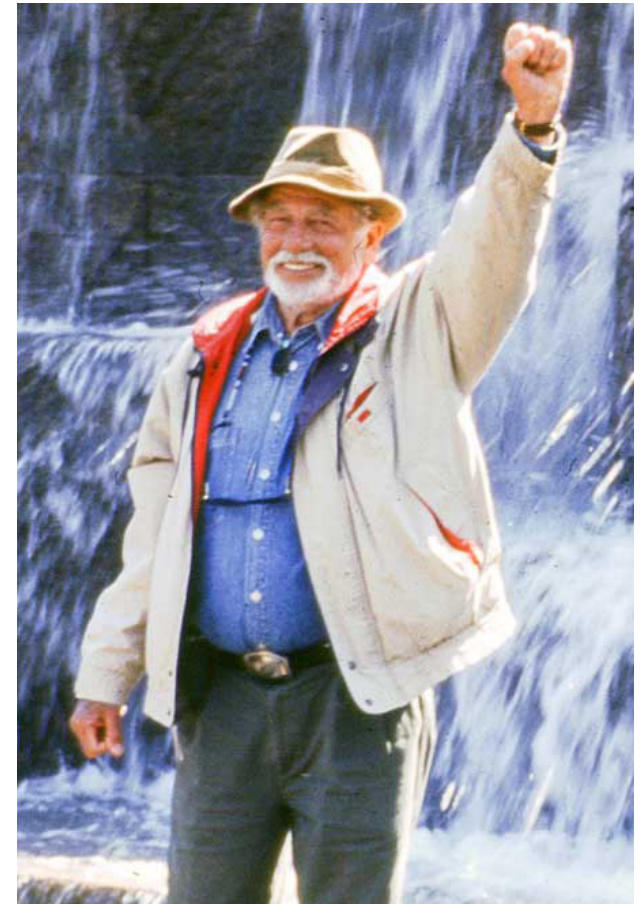




FREEWAY PARK

The Vision

Through a major investment of community, Convention Center and city support, Freeway Park is transformed to a new level of safety and functionality becoming a signature gathering place for community events as well as relaxation.





AGENDA

Project Definition and Background

Right of Way (ROW) Improvements

Freeway Park



PROJECTS OVERVIEW

ROW Improvements (SDOT)

- Improvements to seven primary park entrances located within ROW
- Funded by SDOT Neighborhood Street Fund Program
- Design 2017, Construction 2018

Finding Freeway Park (Seattle Parks & Rec)

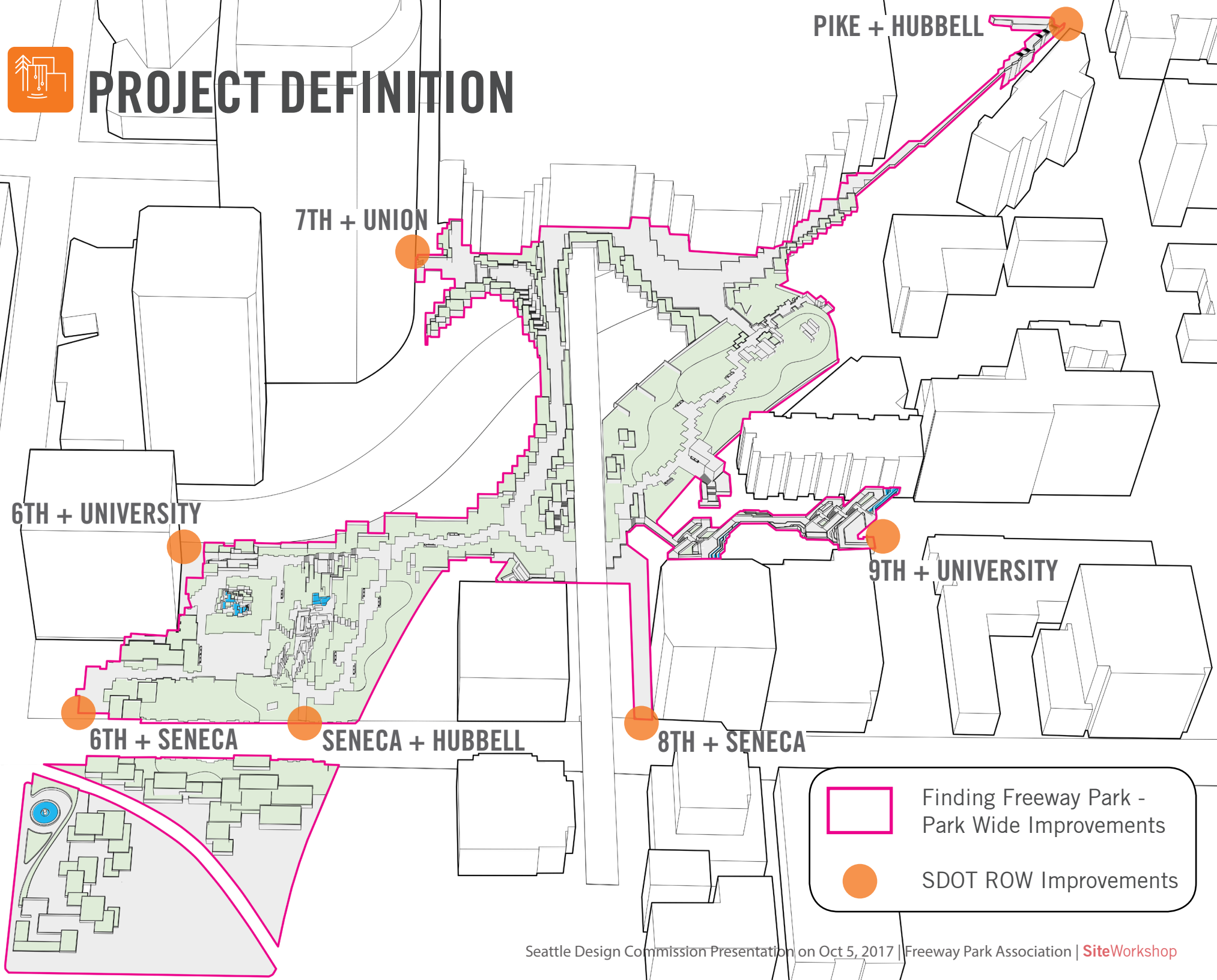
- Concept design for wayfinding, lighting and park activation through a community design process
- Funded by Department of Neighborhoods Matching Fund program
- Complete 2017

Public Benefits Funding (WSCC)

- Capital improvement project (CIP) enabled by Finding Freeway Park concept design and planning and WSCC public benefit funding



PROJECT DEFINITION



PIKE + HUBBELL

7TH + UNION

6TH + UNIVERSITY

9TH + UNIVERSITY

6TH + SENECA

SENECA + HUBBELL

8TH + SENECA



Finding Freeway Park -
Park Wide Improvements



SDOT ROW Improvements



2017 DESIGN PRINCIPLES

REPAIR + RESTORE + ENHANCE

Design Principles:

Physical improvements will be integrated with the existing design, **enhancing the Park's iconic nature** and embracing the legacy and design intent of its original creators.

Stronger connections and wayfinding, as well as a **balance of active and passive spaces**, will increase safety and use while maintaining Freeway Park's sense of tranquility.

Improvements will be **equity-driven**, following Halprin's original intent that Freeway Park be 'a park for everyone'.



ROW IMPROVEMENTS

Scope of Work

- Improvements to seven primary park entrances located within ROW
- Funded by SDOT Neighborhood Street Fund Program
- Design 2017, Construction 2018

1 PIKE + HUBBELL

7 7TH + UNION

6 6TH + UNIVERSITY

2 9TH + UNIVERSITY

5 6TH + SENECA

4 SENECA + HUBBELL

3 8TH + SENECA



IMPROVEMENT ELEMENTS



1 COMMUNITY CROSSWALKS



2 WAYFINDING MARKER



3 PAVEMENT INLAY



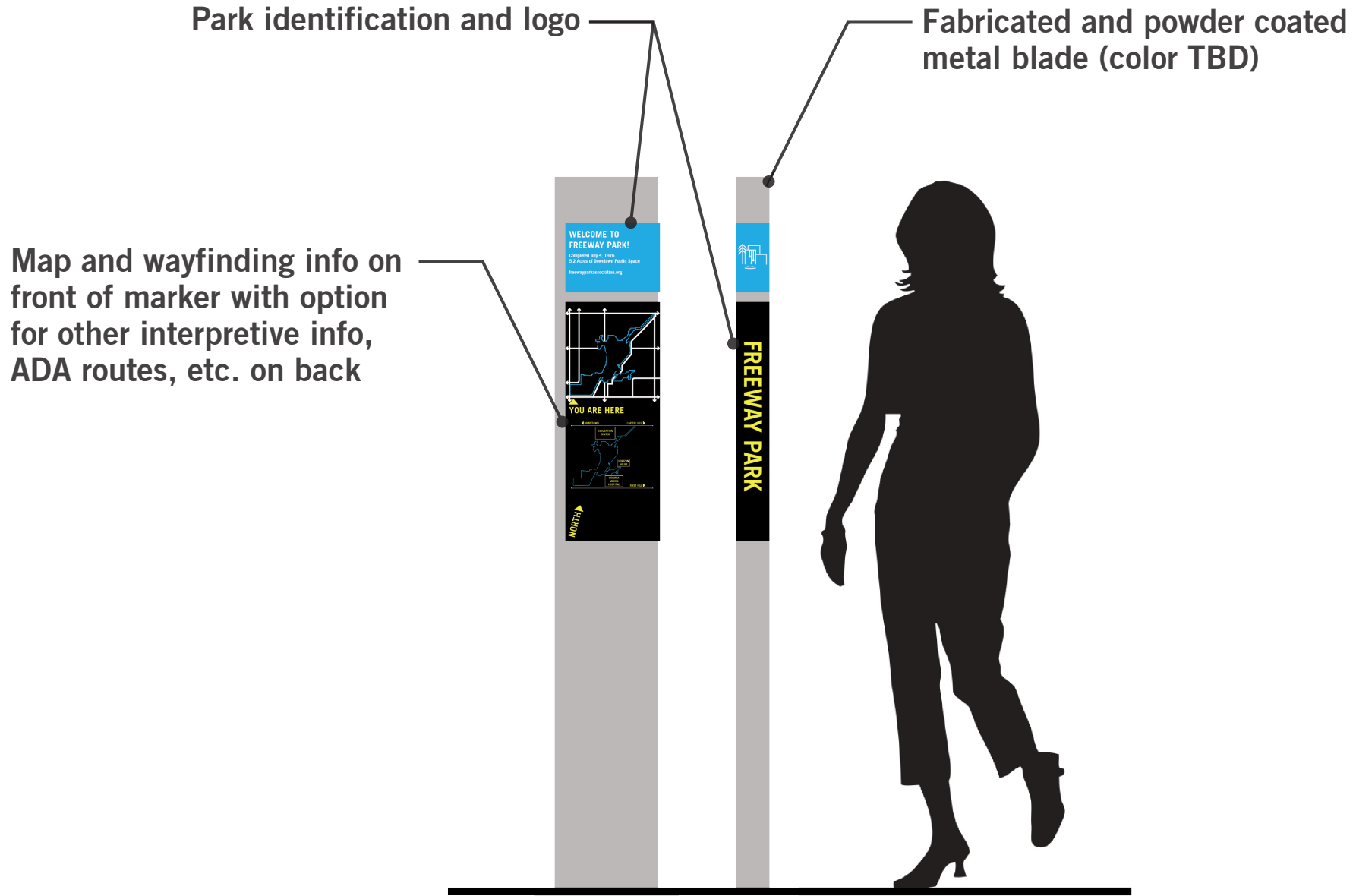
4 PEDESTRIAN LIGHTING



5 CURB RAMP IMPROVEMENTS



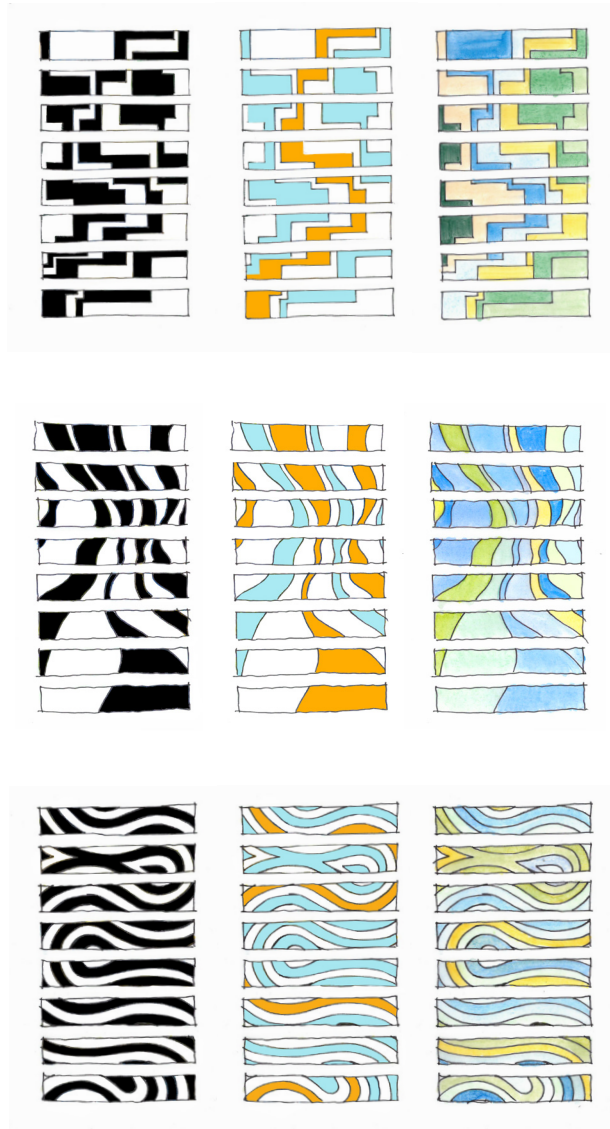
WAYFINDING MARKER



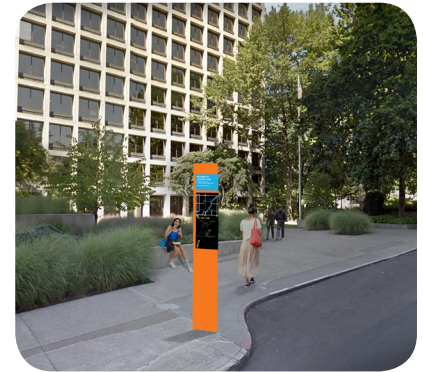
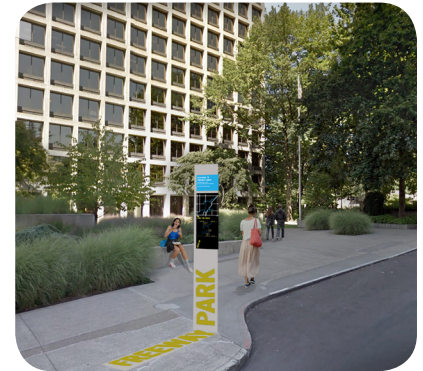


ELEMENT OPTIONS

CROSSWALKS:



WAYFINDING MARKER:



INLAY:





PIKE + HUBBELL

WAYFINDING MARKER

CURB RAMP IMPROVEMENT

COMMUNITY CROSSWALK



OTHER PRIMARY ENTRIES





FINDING FREEWAY PARK SCOPE

Scope of Work

- Concept design for wayfinding, lighting and park activation through a community design process
- Funded by Department of Neighborhoods Matching Fund program
- Complete 2017



CAPITAL IMPROVEMENT PROJECT SCOPE

Lighting & Electrical

New electrical service, system upgrades, event power, ped lighting, fountain lighting

Site Furnishings & Wayfinding

New and restored site furnishings, information kiosks, wayfinding markers

Park Entrance Improvements

Upgrades and art at 12 park entries and major enhancements to one or more entries

New Park Features (Places & Amenities)

New enhancements, amenities, and art to activate the park

Hardscape (Paving & Walls)

Pavement repair and replacement, planter wall improvements

Wet Utilities & Stormwater

Upgrade stormwater to code, sewer and water upgrades

Comfort Station Replacement

Two gender neutral stalls, concierge / office window

Planting & Irrigation

Planting renovations, irrigation repairs and upgrades, maintenance access



PROJECT BUDGET

TOTAL BUDGET = \$10,000,000

SOFT COSTS

Parks Project Management
Consultants
Permits
Contingencies
Inspections
Misc. Costs

Subtotal: \$3,250,000

HARD COSTS

Lighting + Electrical	\$1,500,000
Site Furnishings + Wayfinding	\$225,000
Park Entrance Improvements	\$1,100,000
New Park Elements	\$695,000
Hardscape	\$500,000
Wet Utilities + Stormwater	\$350,000
Comfort Station Improvements	\$700,000
Planting & Irrigation	\$400,000
Sales Tax (10.1%)	\$530,000

Subtotal: \$6,000,000

ACTIVATION

Parks Staffing & Security
Activation
Equipment & Furnishings
Marketing & Outreach

Note: Activation is for a 5 year period

Subtotal: \$750,000



COMMUNITY OUTREACH

Events & Activities

- Community Events
- Tactical Interventions
- Individual interviews, surveys, and group presentations

Stakeholders

- Community Groups & Organizations - FPA, FHIA, DSA, CPC
- City Departments - SPR, SDOT, DoN
- Neighbors - Horizon House, Skyline, office and residential buildings
- WSCC - Pine Street Group, project design team, WSCC leadership
- Historic - DAHP, DoN, TCLF and academic advisors on Halprin



POSTCARD



Seattle Parks & Recreation

healthy people healthy environment strong communities

800 Maynard Avenue S., 3rd Floor Seattle, WA 98134-1336
www.seattle.gov/parks



The Freeway Park Association Presents:

Finding Freeway Park

Help shape the future of one of the country's most iconic parks

Join Us! Public Meetings at Freeway Park:

Saturday, June 3
11am - 2pm

Together w/ Freeway Park in Bloom

Saturday, July 8
11am - 2pm

Together w/ Freeway Park Fountain Fest

Thursday, August 31
After the movie

Night walk w/ Movie Night in the Park

Saturday, September 9
10am - 6pm

At Occidental Park together w/ Seattle Design Festival Block Party

Saturday, September 16
11am - 2pm

Final presentation in the West Plaza

Learn more about the project and take our survey at:
freewayparkassociation.org



Finding Freeway Park

Visit the Park and envision what this place could be to you!



Idea Boxes

What do you love about the Park?
How can it improve?



Retro Game Zone

Enjoy lawn games in the Park!



Join the Conversation

Add your ideas to the chalk wall!

Post your favorite places in the park and ideas for its future.

[#findingfreewaypark](https://twitter.com/findingfreewaypark)



← To Downtown

To Capitol Hill →

Pike St

Washington State Convention Center

Union St

University St

University St

6th Ave

7th Ave

8th Ave

9th Ave

Terry Ave

Seneca St

To First Hill →

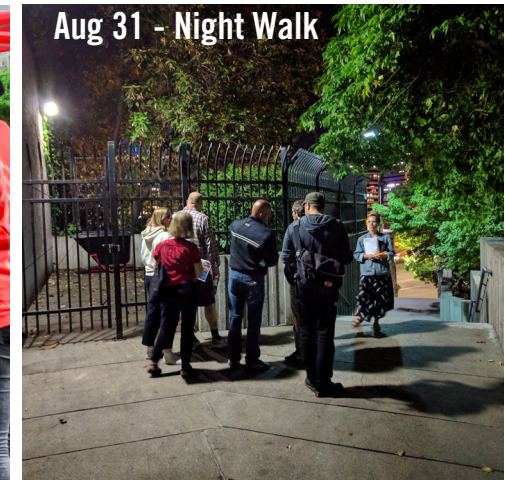


COMMUNITY EVENTS

June 3 - Freeway Park in Bloom



Aug 31 - Night Walk



July 8 - Fountain Festival

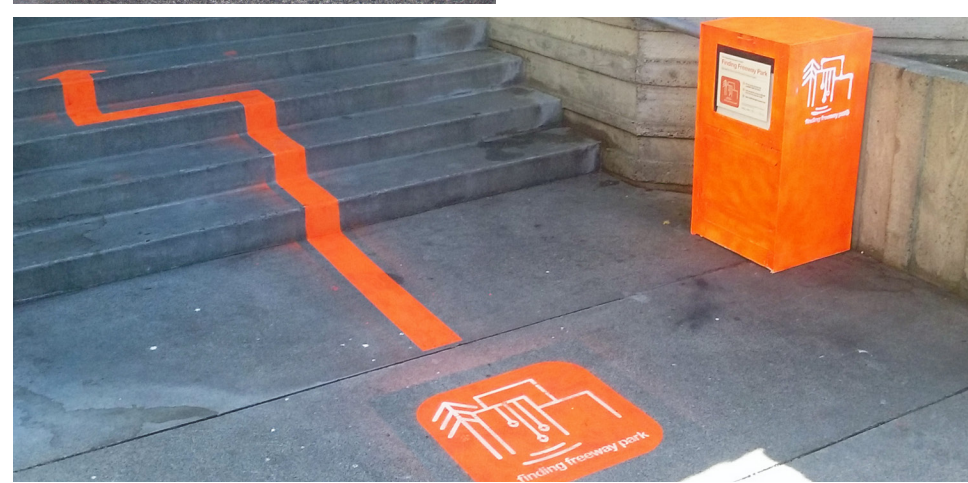
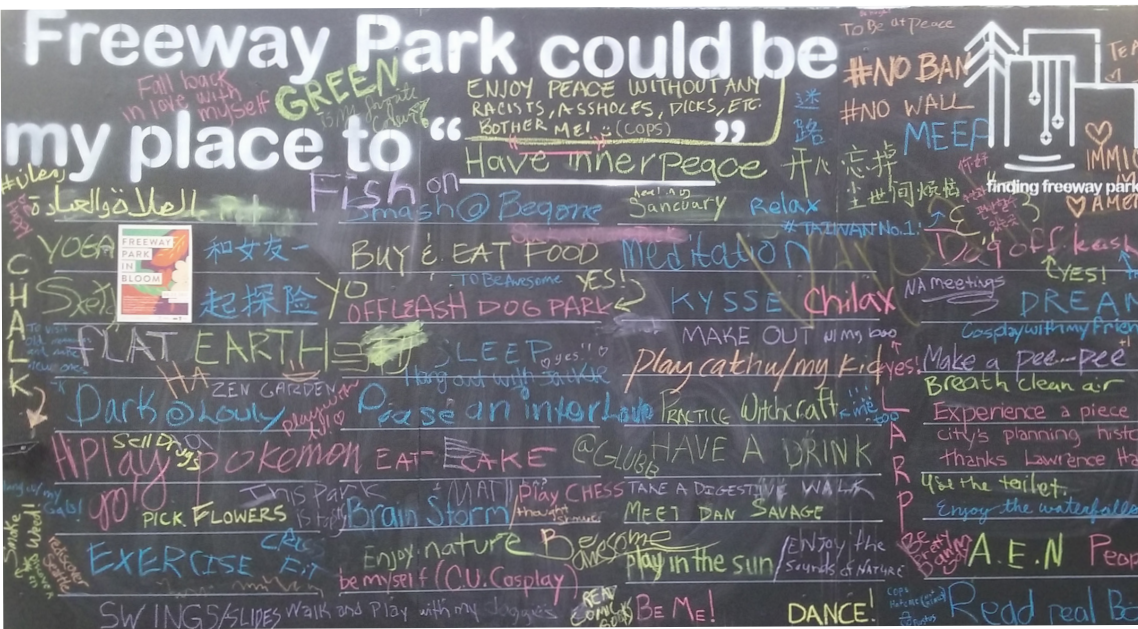


September 16 - Final Event





TACTICAL INTERVENTIONS



[illegible]

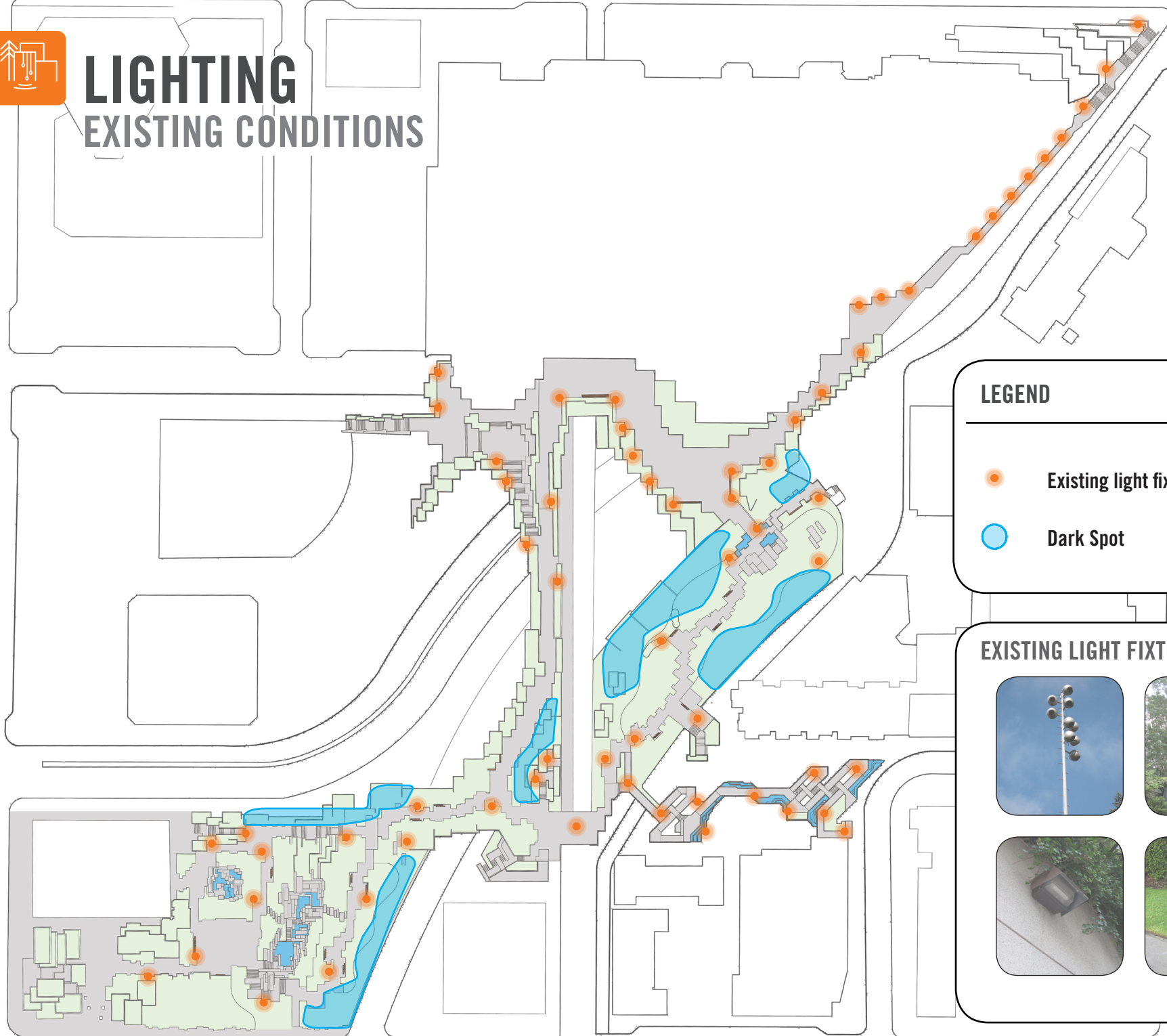
The 100 Most Important Elements of a Successful Public Space

Category	Element
Comfort	Benches
	Seating
	Shade
	Water fountains
	Trash receptacles
	Tables
	Food + Drink
	Restrooms
	Storage
	Lighting
Dogs	Dog Control
	Water
	Shade
	Leash Control
	Waste Disposal
Events	Public Art
	Music
	Performing Arts
	Community Events
	Seasonal Events
Expansion	Public Art
	Music
	Performing Arts
	Community Events
	Seasonal Events
Kids	Public Art
	Music
	Performing Arts
	Community Events
	Seasonal Events
Lighting	Public Art
	Music
	Performing Arts
	Community Events
	Seasonal Events
Maintenance	Public Art
	Music
	Performing Arts
	Community Events
	Seasonal Events
Plants	Public Art
	Music
	Performing Arts
	Community Events
	Seasonal Events
Preservation	Public Art
	Music
	Performing Arts
	Community Events
	Seasonal Events
Awareness	Public Art
	Music
	Performing Arts
	Community Events
	Seasonal Events
Recreation	Public Art
	Music
	Performing Arts
	Community Events
	Seasonal Events
Safety	Public Art
	Music
	Performing Arts
	Community Events
	Seasonal Events
Wayfinding	Public Art
	Music
	Performing Arts
	Community Events
	Seasonal Events
Architecture	Public Art
	Music
	Performing Arts
	Community Events
	Seasonal Events
Art	Public Art
	Music
	Performing Arts
	Community Events
	Seasonal Events
Atmosphere	Public Art
	Music
	Performing Arts
	Community Events
	Seasonal Events





LIGHTING

EXISTING CONDITIONS



LEGEND

-  Existing light fixture
-  Dark Spot

EXISTING LIGHT FIXTURES



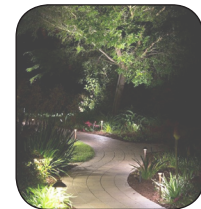


LIGHTING PROPOSED IMPROVEMENTS

LEGEND

- Proposed pedestrian pole
- Proposed landscape lighting
- Proposed fountain lighting

PROPOSED LIGHT ELEMENTS



Landscape uplighting



Pedestrian pole

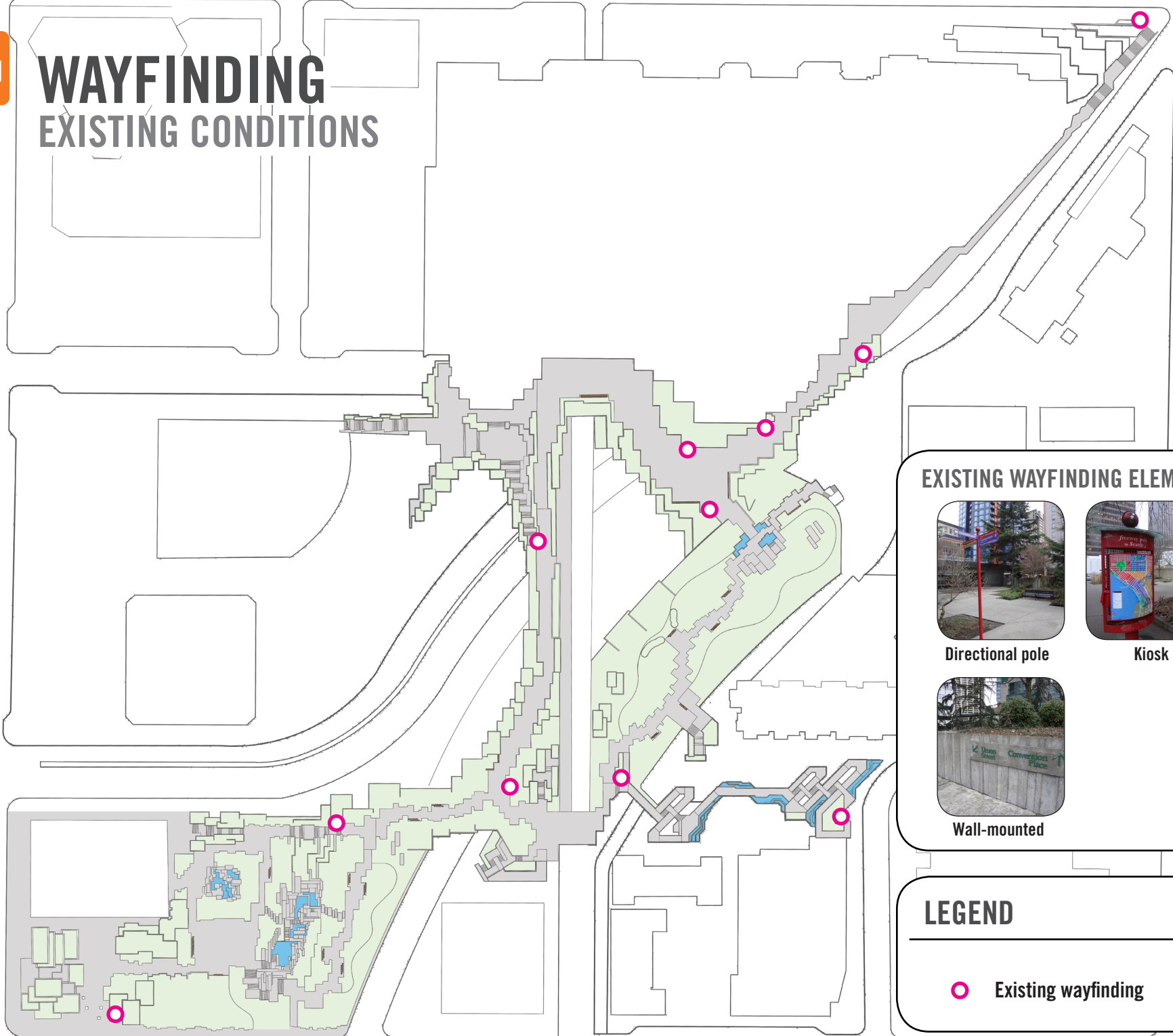


Fountain lighting



WAYFINDING

EXISTING CONDITIONS



EXISTING WAYFINDING ELEMENTS



Directional pole



Kiosk



Wall-mounted

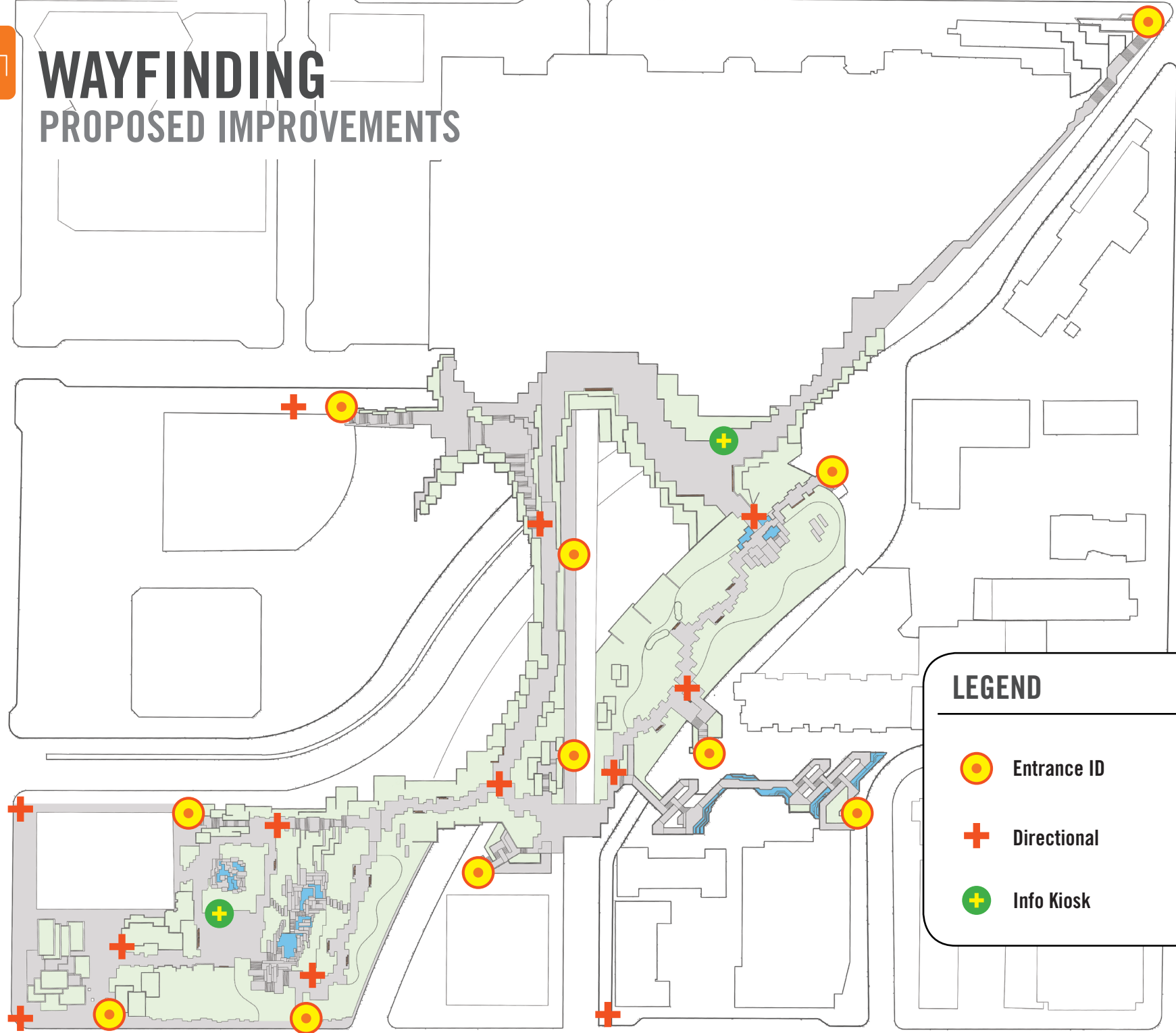
LEGEND

○ Existing wayfinding






WAYFINDING

PROPOSED IMPROVEMENTS



LEGEND

-  Entrance ID
-  Directional
-  Info Kiosk



FREEWAY PARK PLACES

CONVENTION
CENTER PLAZA

CANOPY WALK

BOTANIC WALK

BACK YARD

PLAY SPACE

Horizon House

Park
Place

University St.

Interstate 5

Hubbell Pl.

Exeter
House

Cielo

UNDERPASS

University St.

9th Ave.

Seneca St.

SENECA PLAZA

8th Ave.

NARAMORE FOUNTAIN + BOX CANYON



NARAMORE FOUNTAIN + BOX CANYON





CANOPY WALK

EXISTING CONDITIONS





CANOPY WALK

CONCEPT IDEA

CATENARY LIGHTING

MURAL OPPORTUNITY



CANOPY WALK

CONCEPT IDEA

LOW BOULDERING WALL





CONVENTION CENTER PLAZA

EXISTING CONDITIONS





CONVENTION CENTER PLAZA

CONCEPT IDEA

COFFEE KIOSK

LAWN AREA

IMPROVED SEATING

PAVING IMPROVEMENT





BACKYARD

EXISTING CONDITIONS





BACKYARD MOVIE NIGHT





BACKYARD CONCEPT IDEA

MARKET TENTS

COMFORT STATION

ACTIVE PROGRAMMING

ALL-GENDER
RESTROOM
→



BACKYARD COMFORT STATION +





BOTANIC WALK

EXISTING CONDITIONS





BOTANIC WALK

CONCEPT IDEA

WAYFINDING MARKER

BOTANICAL PLANTING

SEATING IMPROVEMENT

PAVING IMPROVEMENT

CONVENTION CENTER ▶



UNDERPASS

EXISTING CONDITIONS





UNDERPASS

CONCEPT IDEA

ROTATING ART INSTALLATION





SENECA PLAZA

EXISTING CONDITIONS





SENECA PLAZA

CONCEPT IDEA

MOVABLE PERFORMANCE SPACE

FOOD TRUCKS

PAVING IMPROVEMENT



PLAY SPACE

EXISTING CONDITIONS





PLAY SPACE CONCEPT IDEA

EXPERIMENTAL PLAY STRUCTURE





PLAY SPACE CONCEPT IDEA





NEXT STEPS

Public Benefit Agreement

Finalize public benefit agreement regarding timing of funding and transfer to Seattle Parks & Recreation

Capital Improvement Project

Once funding is available the project becomes a capital improvement project managed by Seattle Parks & Recreation

Reviews, Permitting and Approvals

SDC reviews at SD and DD phases of work in addition to SPR standard process

Project will meet all required city, state and federal level permits and approvals

Potential review and approvals by Dept of Arch & Historic Preservation



SUMMARY

Coordinating and leveraging two current Park planning projects (Finding Freeway Park and SDOT ROW improvements) to generate the framework and specific designs for a major enhancement of Freeway Park - a perfectly timed public benefit to compliment the WSCC Addition

Key Elements:

- Easier, more visible access
- Increased safety
- Improved lighting and wayfinding to and through the Park
- Major upgrades to infrastructure critically needed to support enhanced programming and activation
- New features - comfort station, performance venues, Convention Plaza activation

Questions and Comments