

SDOT Public Life Program



Aditi Kambuj, Ellie Smith, Alex Hagenah, Joshua Gawne
Seattle Department of Transportation



City of Seattle

Agenda

- Introductions
- Background on SDOT Public Life Program
- Public life tools and applications
- Q&A
- Discussion

Hello from the SDOT public life team!

Aditi Kambuj – Urban Design Manager

Policy & Planning

Ellie Smith – Senior Transportation Planner

Policy & Planning

Alex Hagenah – Data Librarian

Asset Management

Joshua Gawne – Urban Designer

Policy & Planning

Our vision, mission, and core values

Vision: Seattle is a thriving equitable community powered by dependable transportation

Mission: to deliver a transportation system that provides safe and affordable access to places and opportunities

Committed to **6 core values:**

- **Equity**
- Safety
- Mobility
- Sustainability
- **Livability**
- Excellence

LIVABILITY

manage our
streets and
public spaces to
enrich public life
and improve
community
health

EQUITY

partner with
communities to a
build a racially
equitable and
socially just
transportation
system

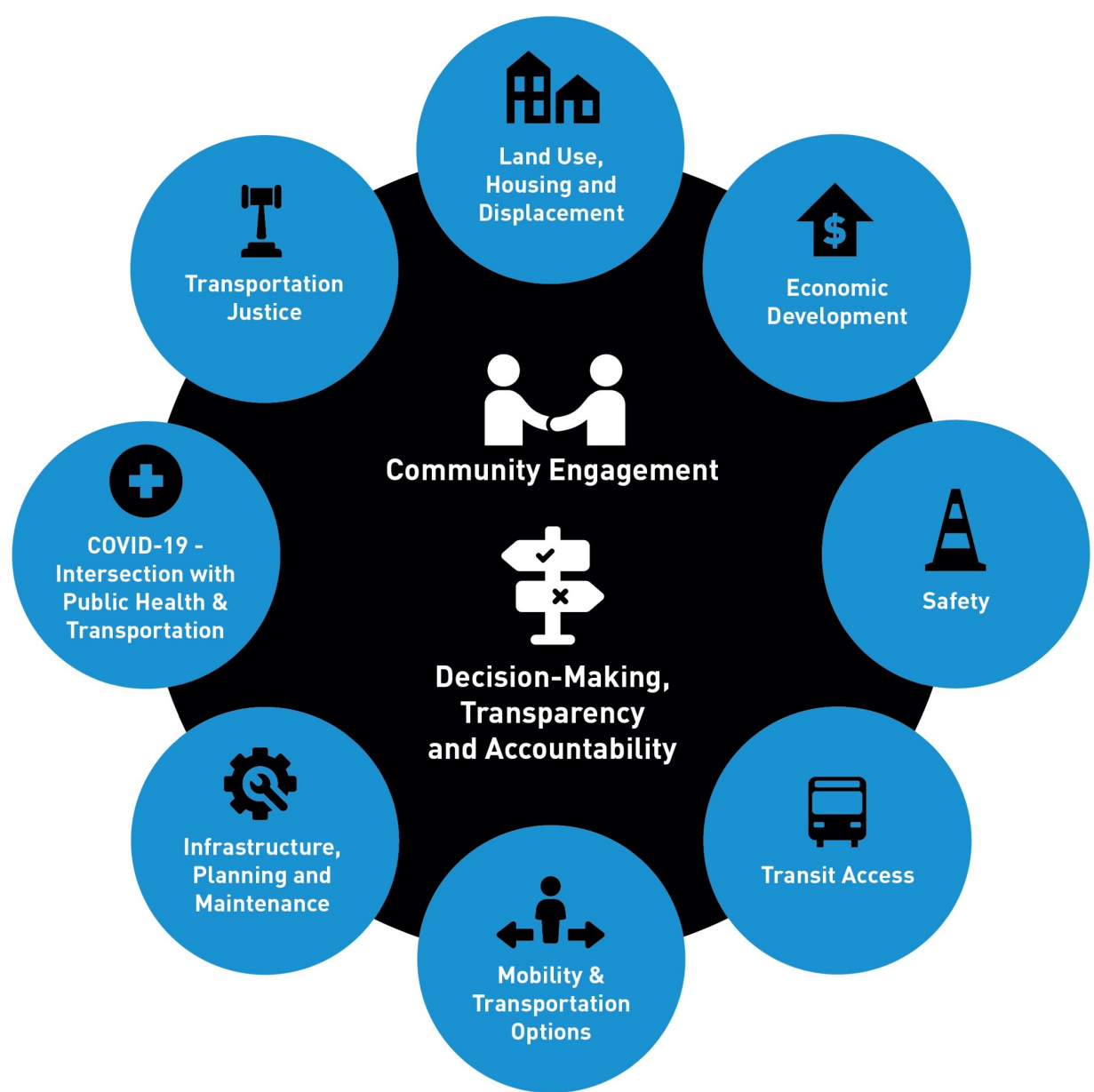


In Seattle's future, a robust transportation system should develop a more vibrant city by creating streets and sidewalks that generate economic and social activity, adding to the city's overall health, prosperity, and happiness

-Seattle Comprehensive Plan

Transportation Equity Framework

Tactic: Create and launch a public space initiative that is community-driven to foster connection and build public spaces (e.g., places to socialize and host cultural events)



What is public life?

The activity that unfolds in our shared public spaces, which can be:

As simple as everyday routines.

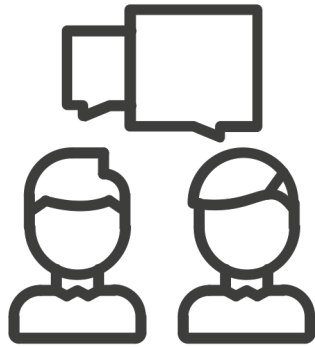
As complex as fostering spaces for interaction and community development.

As fundamental as exercising free speech.

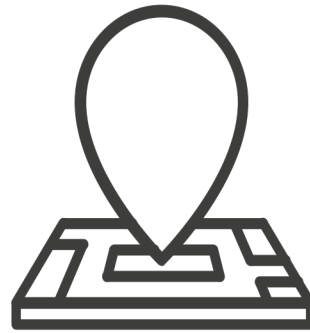
What is a public life study?



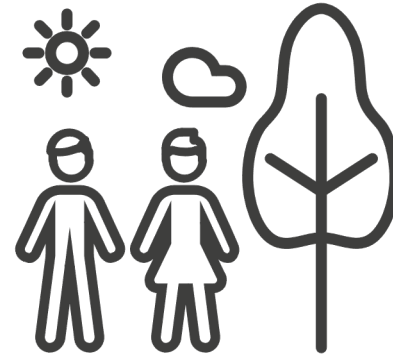
observing and
measuring
people
moving and
staying



engaging
users of the
space in
dialogue
about what
works



assessing
urban design
characteristics



working with
users to
identify
opportunities
to enhance
experience

Public Life Data Protocol

THE OPEN PUBLIC LIFE DATA PROTOCOL

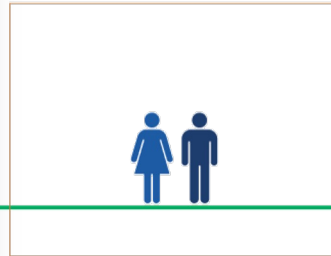
VERSION: BETA | SEPTEMBER 27 2017

PUBLISHED BY:
Gehl Institute
City of San Francisco's Planning Department
Copenhagen Municipality's City Data Department
Seattle Department of Transportation
Gehl

Please note that this version of the Protocol consists of flat text and elements.
Version 1.0 is scheduled for release later this year and will be published as an interactive file using open-source software.

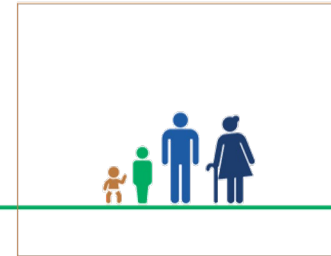
GENDER

Applies to people staying and moving



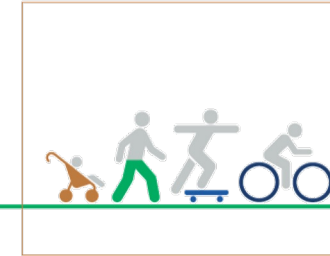
AGE

Applies to people staying and moving



MODE

Applies to people moving



GROUPS

Applies to people staying and moving



POSTURE

Applies to people staying



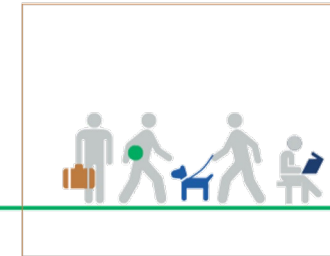
ACTIVITIES

Applies to people staying and moving



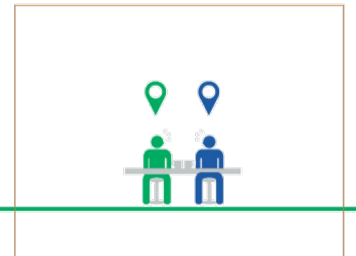
OBJECTS

Applies to people staying and moving



GEOTAG

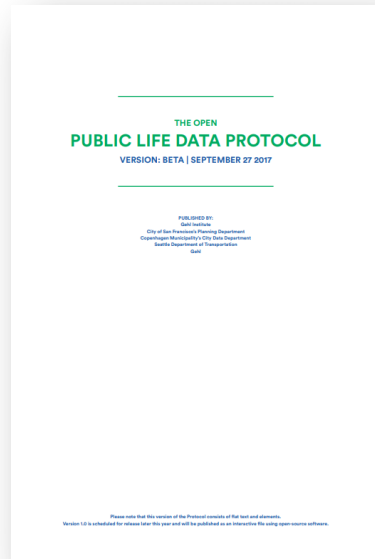
Applies to people staying



SDOT Public Life Program

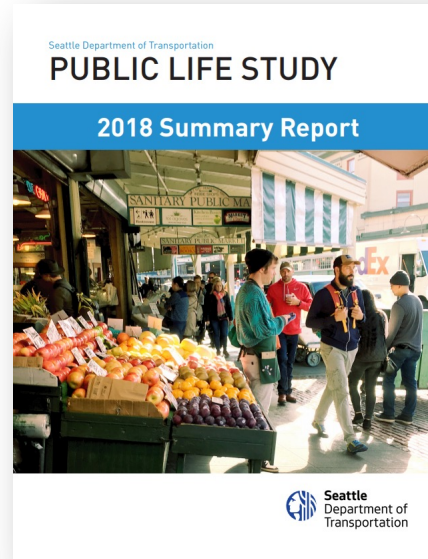
2017

Developed the Public Life Data Protocol with international partners



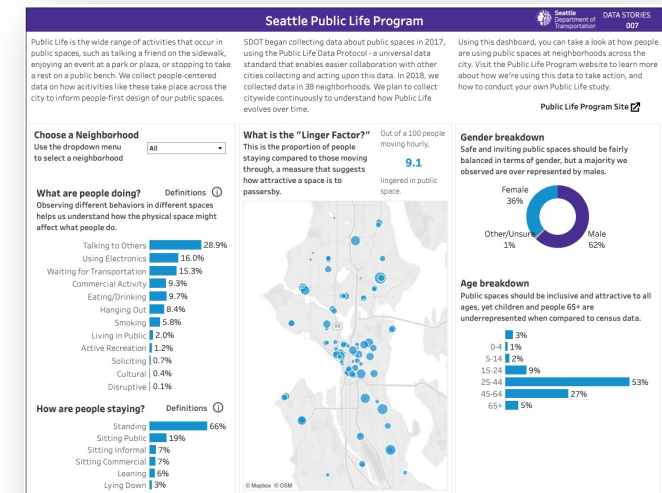
2018

Conducted initial citywide study



2019

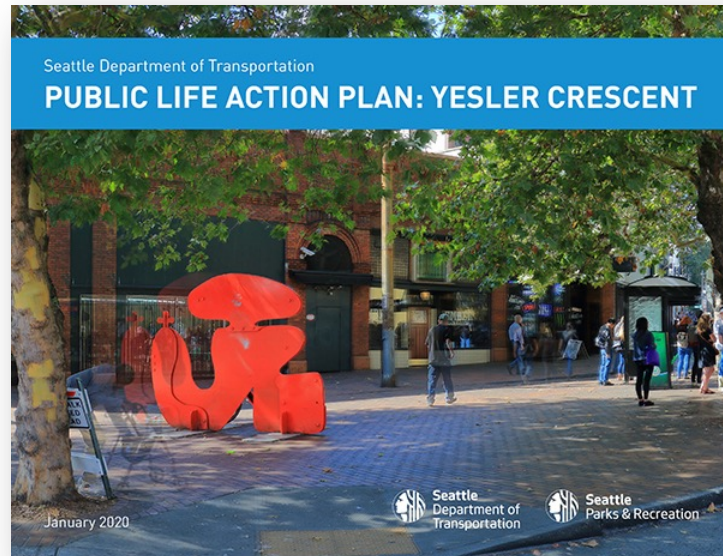
Established key *livability* metrics to be included in Seattle's Moving the Needle performance report



SDOT Public Life Program

2019

Developed framework for and completed first Public Life Action Plan



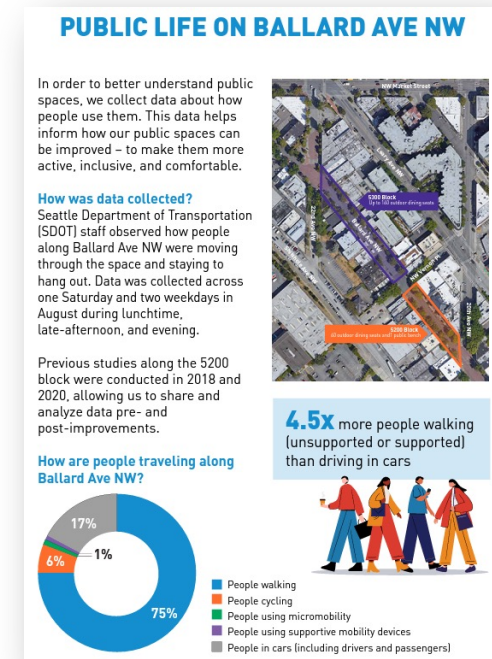
2020

Conducted study at sites with pandemic street activations



2022

Conducted studies at McGraw Square and Ballard Ave NW



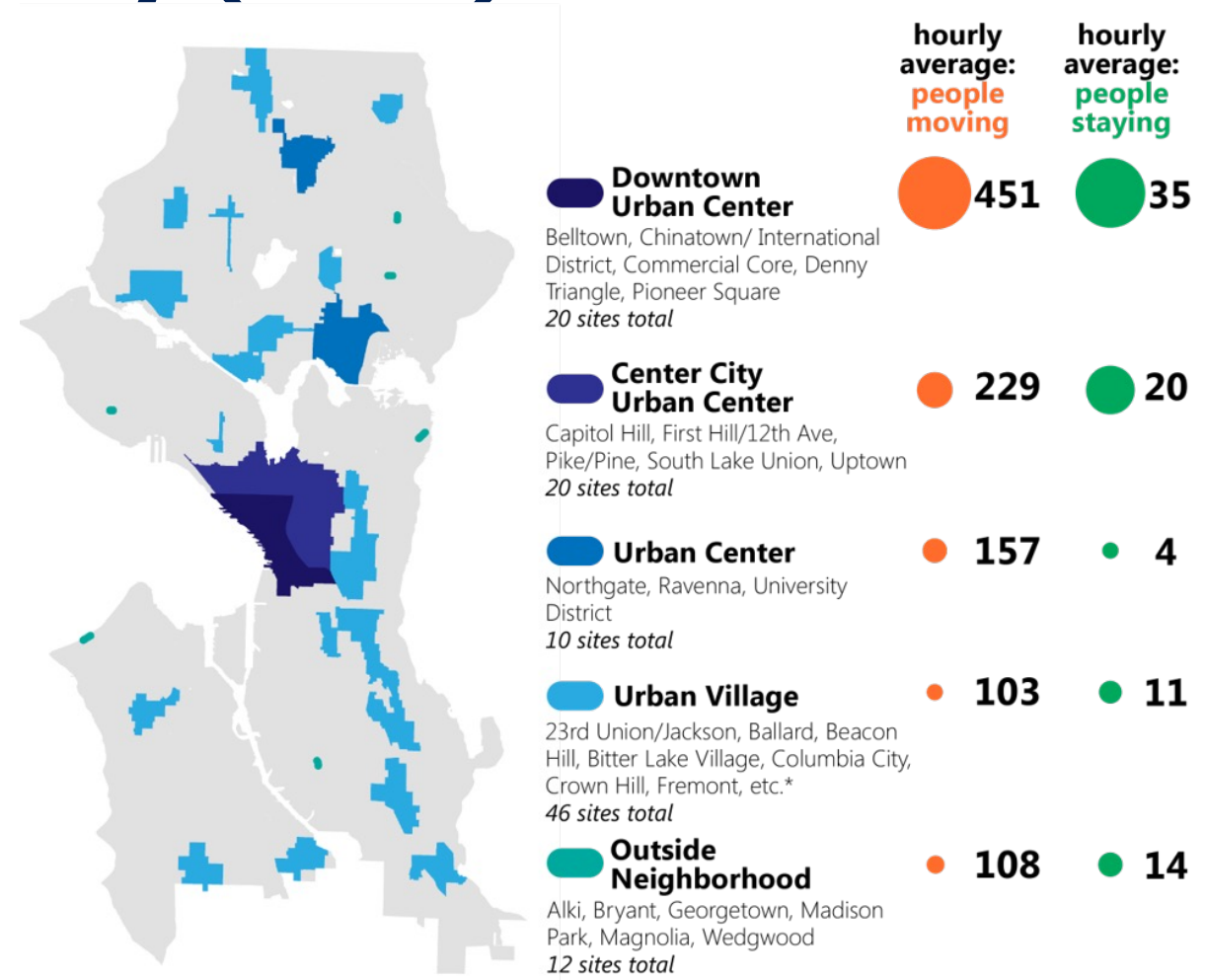
Application: citywide study (2018)

Purpose

- Measure SDOT's core value of livability
- Provide initial benchmark to track the performance of sidewalks as public spaces, and allow for comparisons over time
- Equip SDOT with data to inform public realm investments

Methodology

- Public life observations



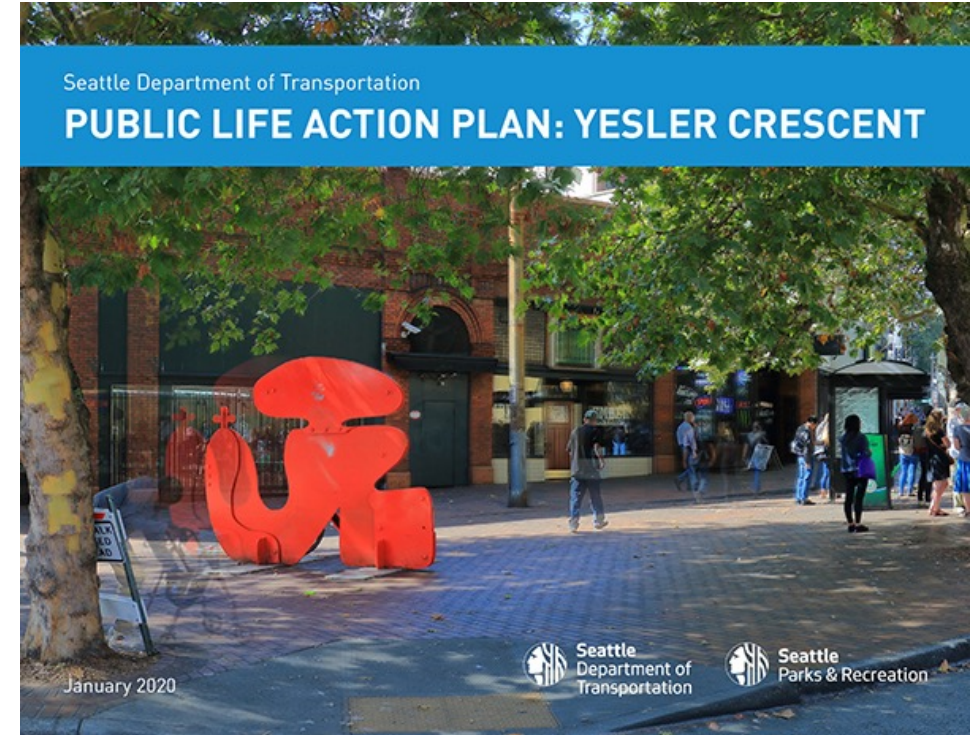
Application: public life action plan (2019)

Purpose

- Document how collection of public spaces are used and perceived
- Identify ways to maximize use and meet needs of current users
- Develop a plan of action to fund and implement design recommendations

Methodology

- Public life observations
- Intercept surveys and focus groups
- Urban design assessment



Application: site-based design intervention (2022)

Purpose

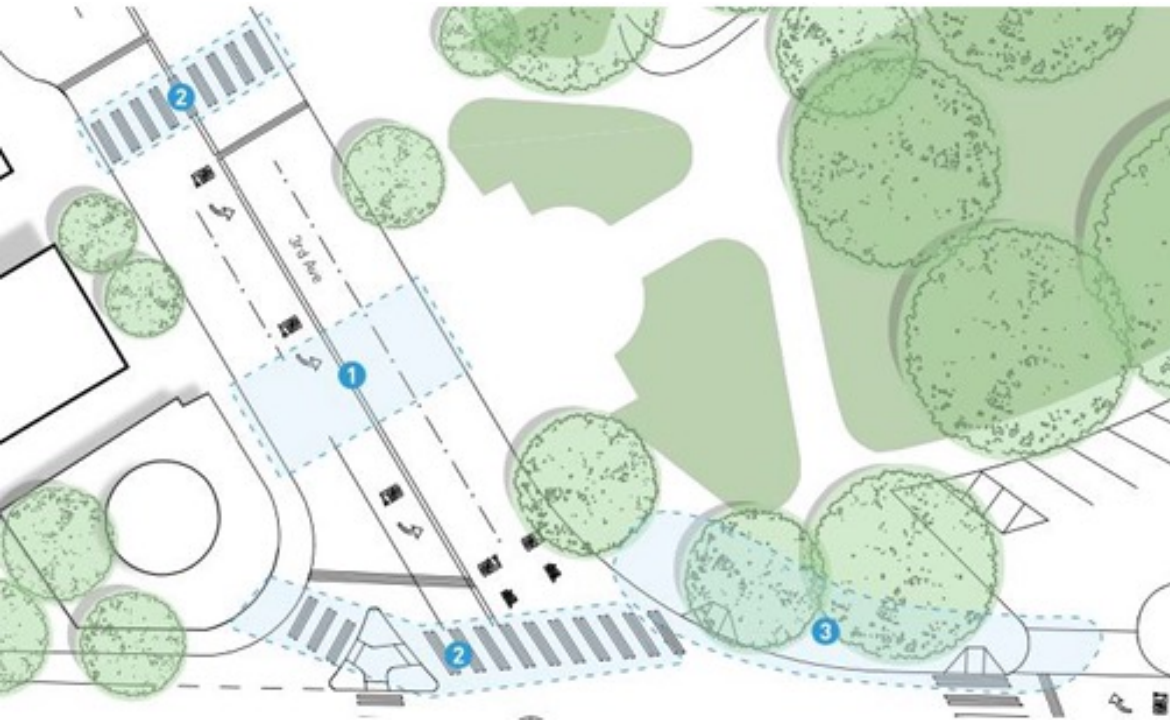
- Use public life data to inform re-design of McGraw Square
- Encourage City team and design team to observe and experience the space; partnership between public and private groups to shape project's public benefit

Methodology

- Public life observations
- Observer de-brief and application of findings



Public life data informs design decisions



Circulation observations and recommendations informed 3rd + Yesler safety improvements

Postures indicate people aren't encouraged to linger for long periods

79% standing

10% sitting formal

7% sitting informal

3% lying down

Compared to 2020:

52% standing

37% sitting formal

<1% sitting informal

<1% lying down

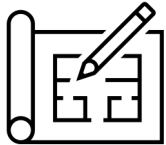


Staying patterns indicate opportunities for improving lingering at McGraw Square

Key takeaways



Produce knowledge. Street-level research and engagement is critical for understanding the social and physical environment.



Get scrappy. Public life tools are scalable and can be created and executed in-house.



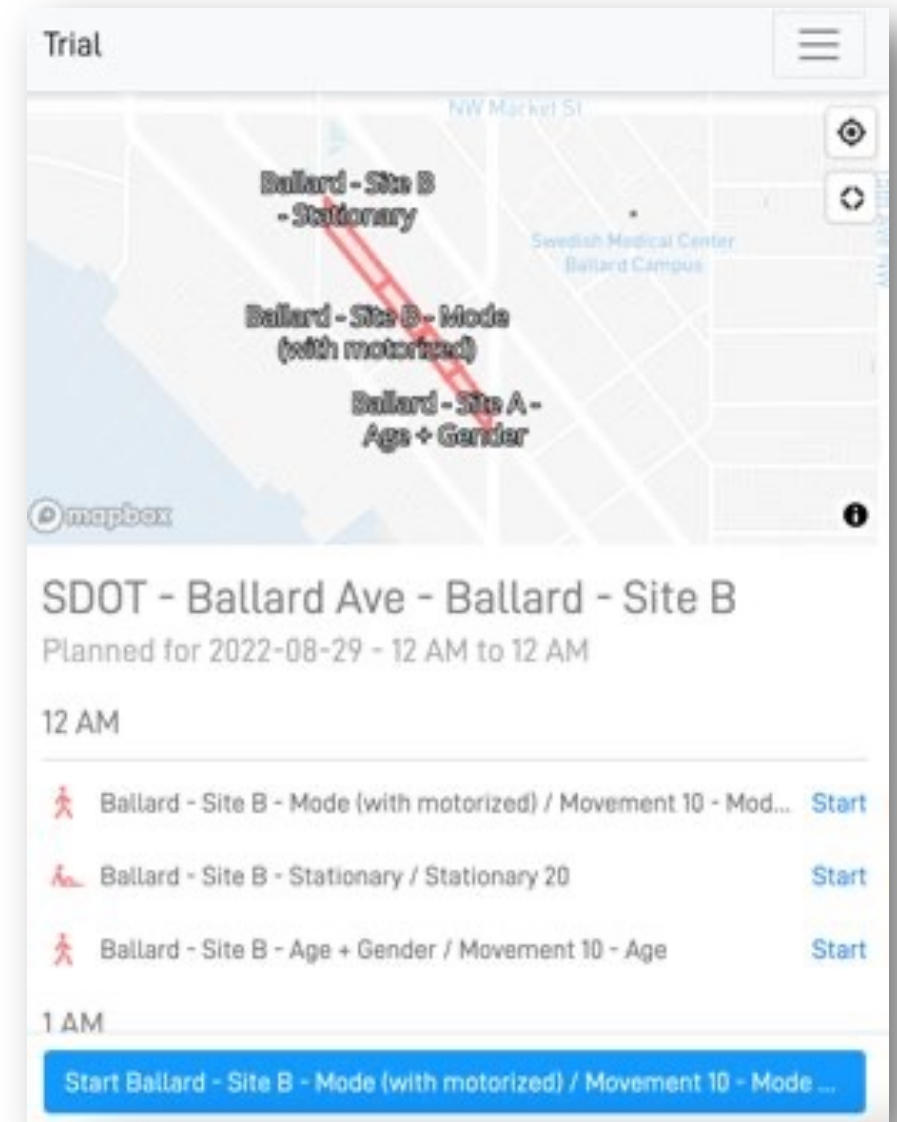
Build partnerships. Data collection itself is a form of engagement and a great way to establish a shared vocabulary about a local area and buy-in for solutions.



Center user experience. People-data as the basis of the planning process gets us closer to equitable outcomes.

What's next?

- Build out data collection infrastructure and internal capacity to support
- Continue growing awareness of tools and opportunities for partnership
 - Develop partnerships to study station areas
 - Identify opportunities through the Seattle Transportation Plan (specifically the People Streets and Public Spaces element) to use public life tools for equitable public space development



Gehl public life data collection app

Questions?



Stay in touch

<https://www.seattle.gov/transportation/projects-and-programs/programs/urban-design-program/public-life-program>

SDOTpubliclife@seattle.gov