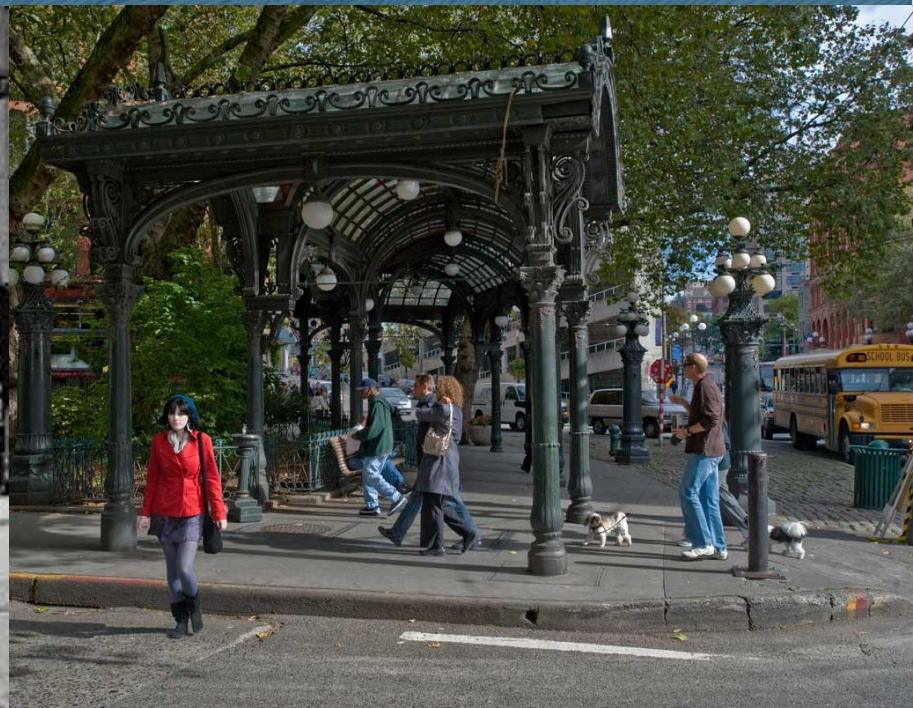


Design Commission Presentation



TRAIL to TREASURE

Trail to Treasure is . . .



Sharing our story



Trail to Treasure



Design Commission



2/16/2012

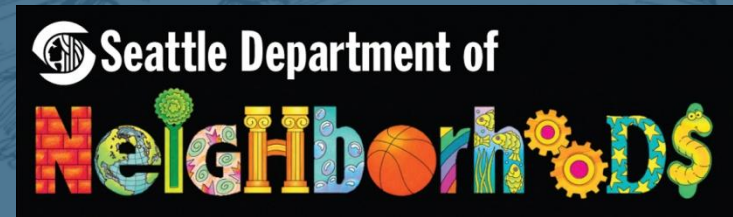
Enhancing the public realm



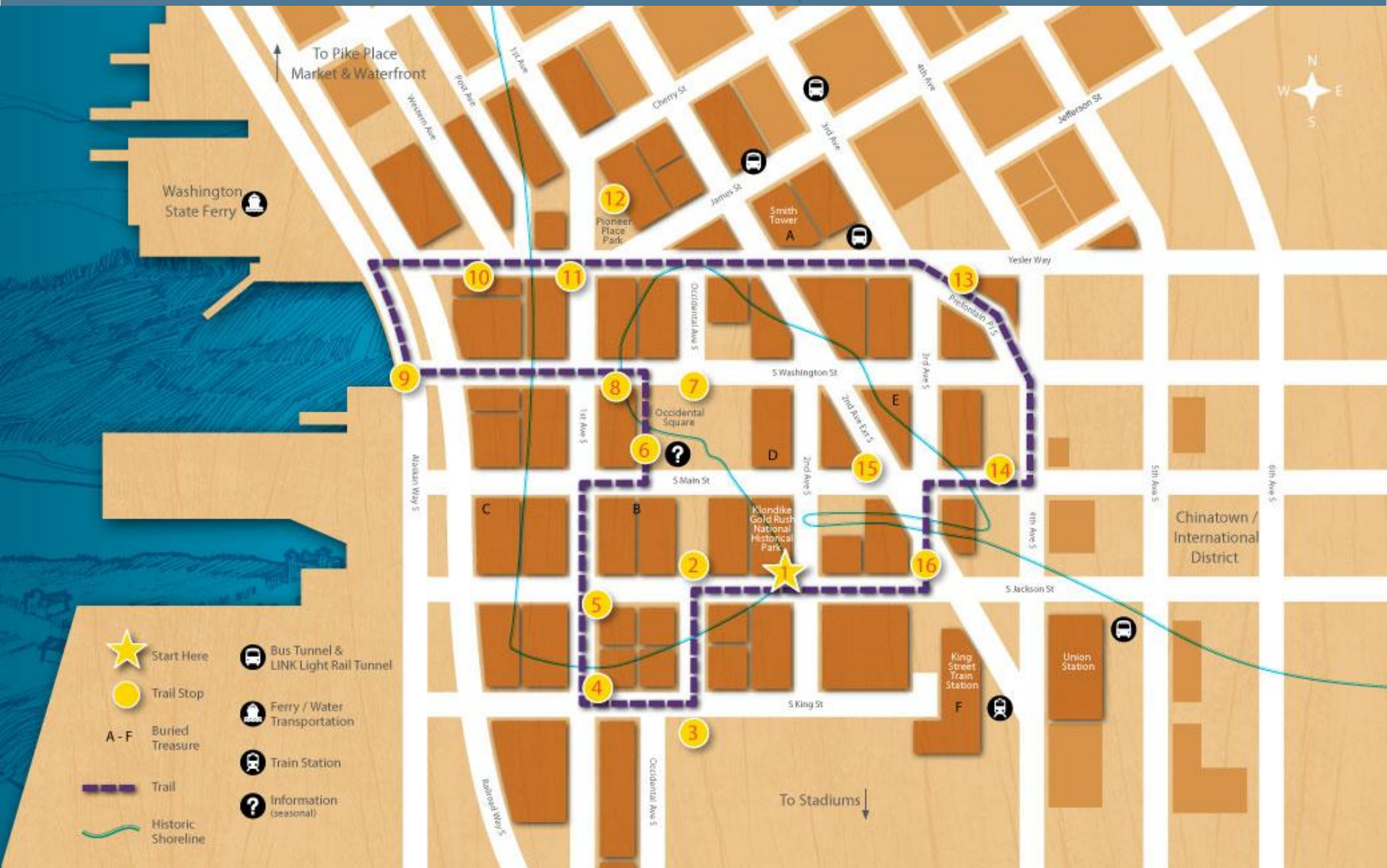
Project History

- Community initiated idea
- NPS: Rivers, Trails, and Conservation Assistance 2008
- Small and Simple 2009
- Large Project Fund 2009
- 4Culture Heritage grant 2010
- Goal in 2015 Pioneer Square Neighborhood Plan

Partners



Neighborhood Businesses, Designers and Residents



Where we are today

- NPS funded design fabrication of waysides
- Approved locations from Preservation Board
- SDOT permitting for unique objects in right of way currently under review
- Design Commission
- Final design and fabrication from contractor
- Installation January 2013

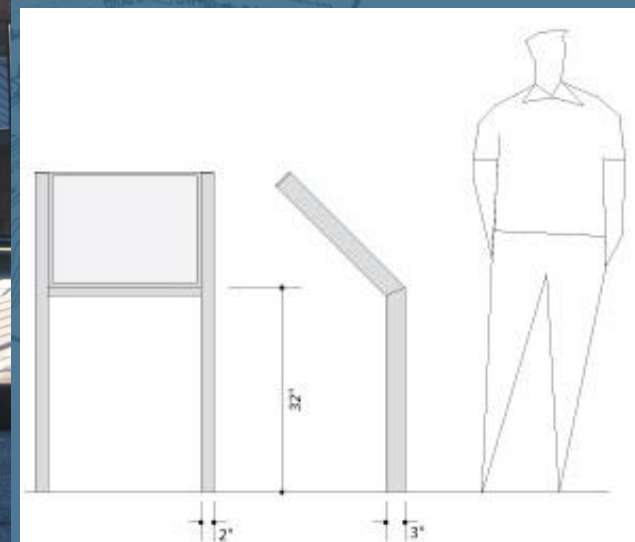


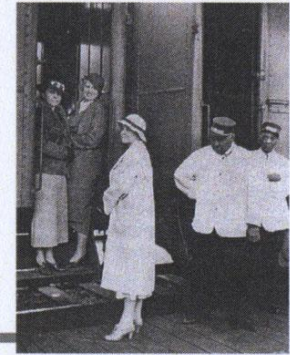
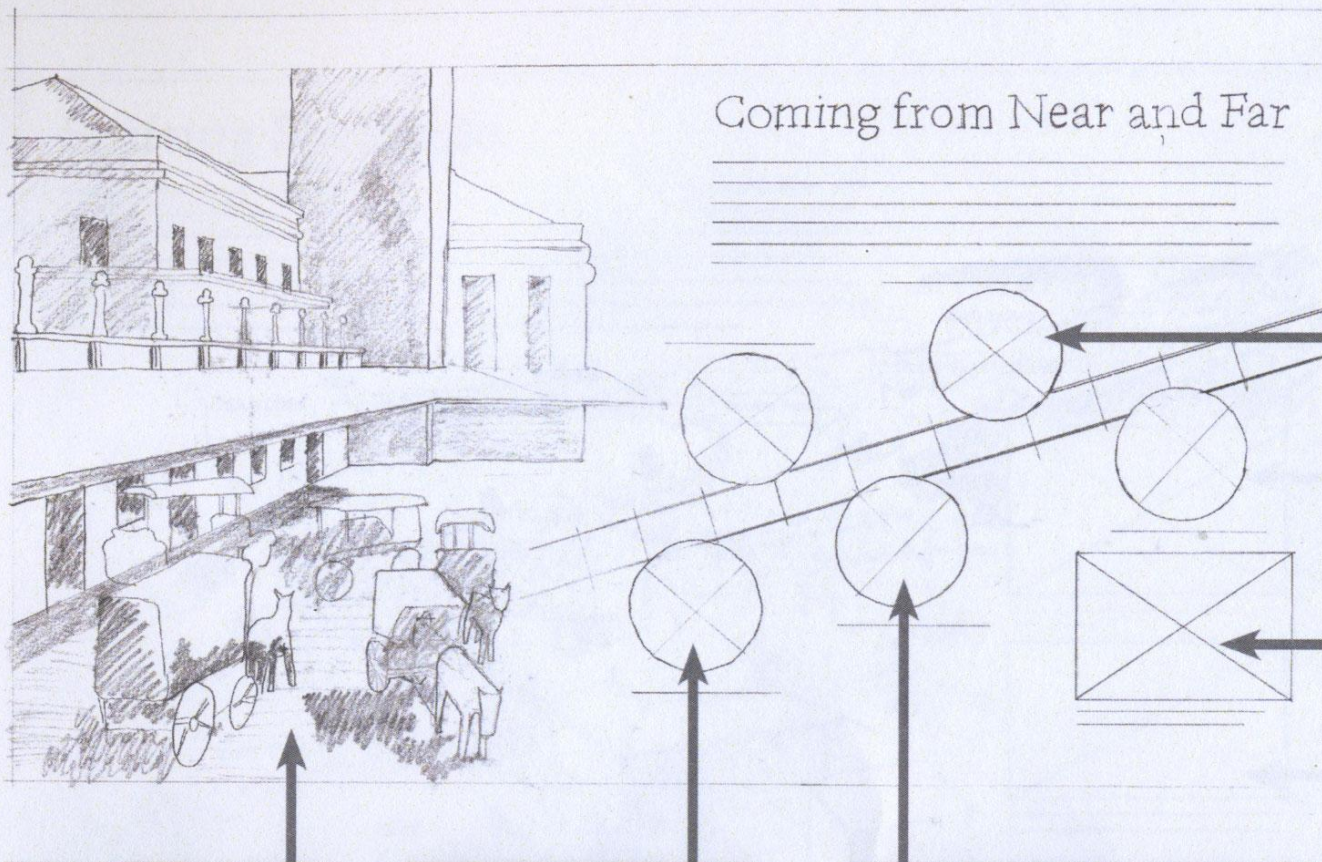
Transit Hub



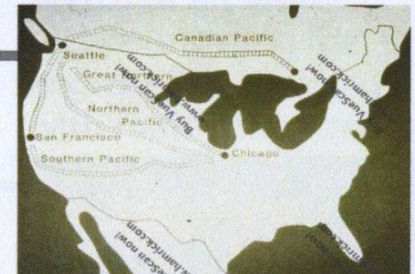


- 42"x24" low profile standard base 45° angle
- Black powder coated aluminum frame
- Base plate mount with epoxy grouted anchor bolts

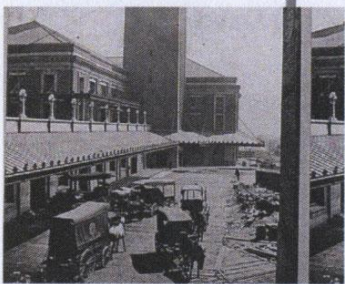




Historical photograph of 1930s African American porters and passengers.



Repurpose existing graphic showing the train lines that connected through Seattle.



Historical photograph of King Street Station. This is the same view from wayside.

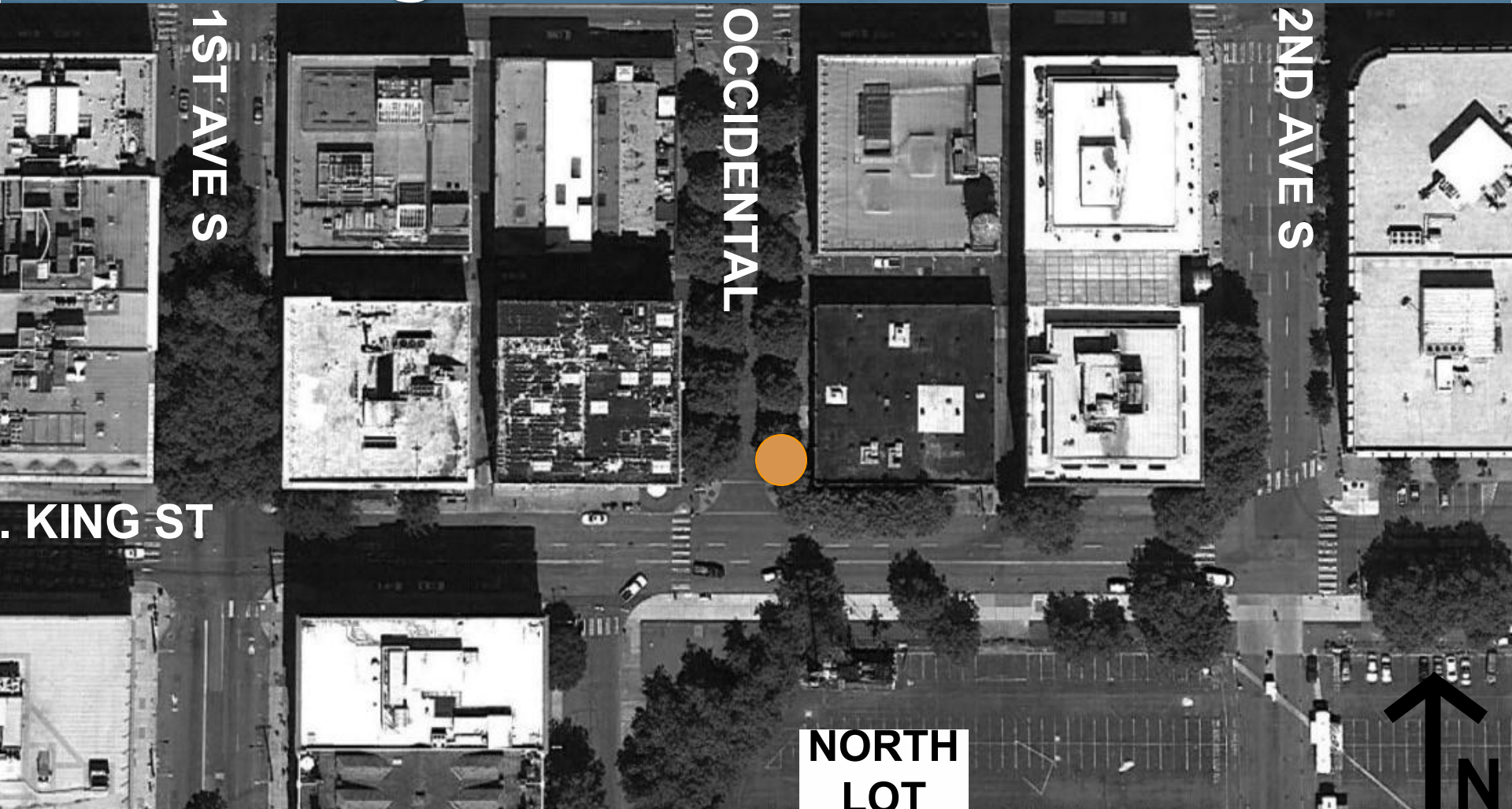


Historical photograph of sailors at train station reading news that WWII has ended.



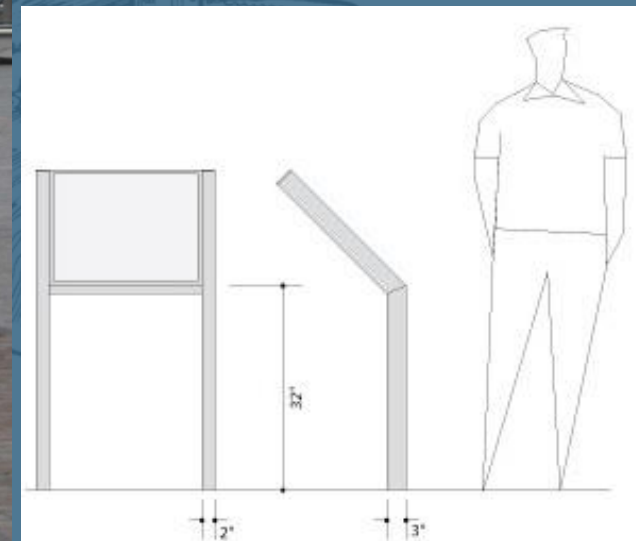
Historical photograph of Chinese people working on the railroad and living in Seattle.

Shifting Shoreline

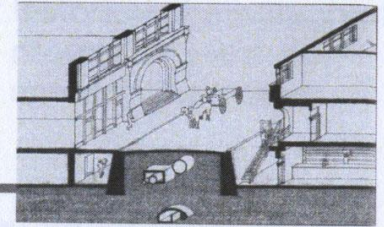
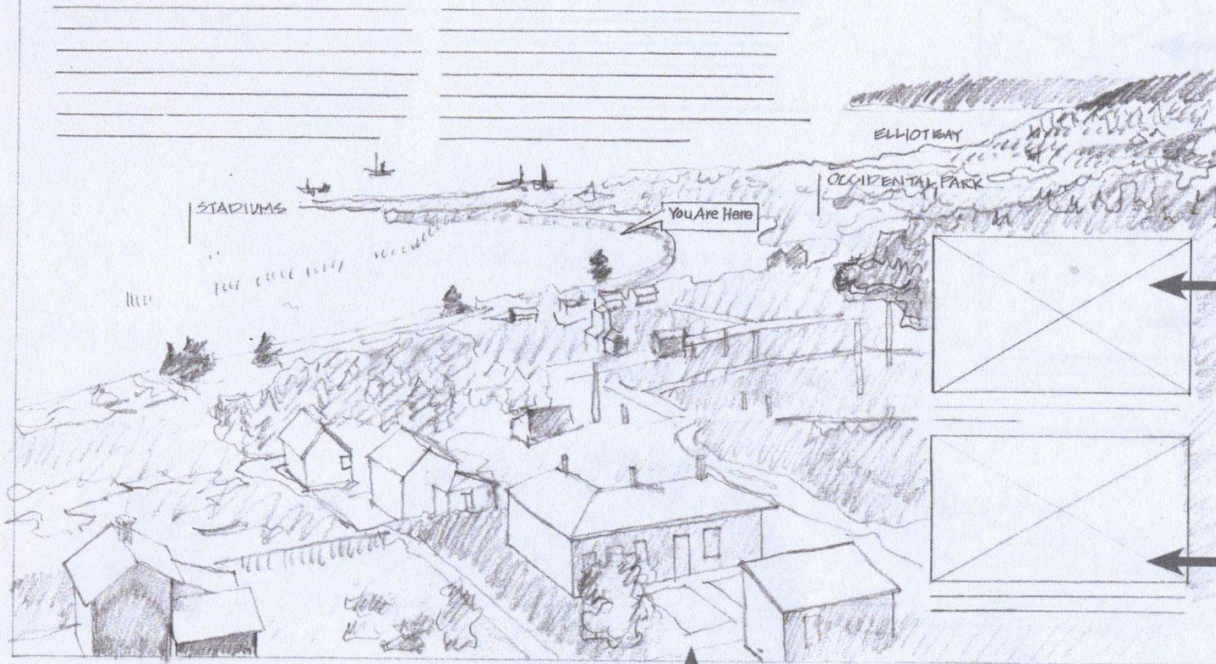




- 36"x24" low profile standard base 45° angle
- Black powder coated aluminum frame
- Base plate mount with epoxy grouted anchor bolts



Shifting Shoreline

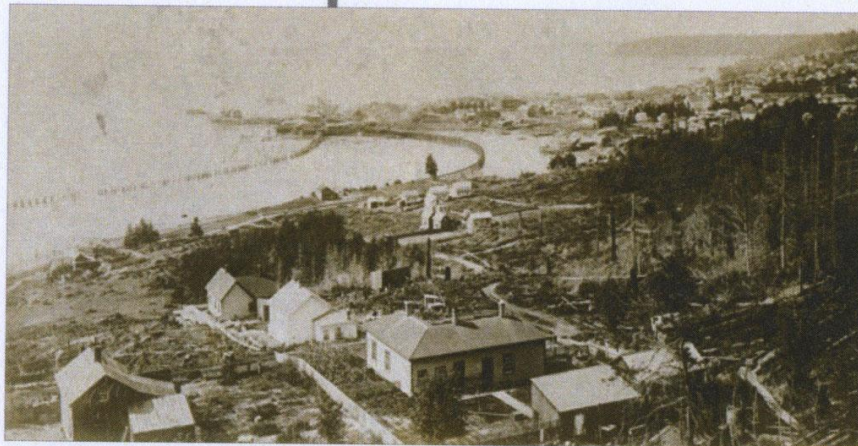


Re-purpose existing sketch of an urban section showing the engineering involved with raising the street.



Existing postcard of Union Train Station showing the raised street structure.

Historical photograph of the 1880s Seattle waterfront.



Going for Gold



WASHINGTON ST

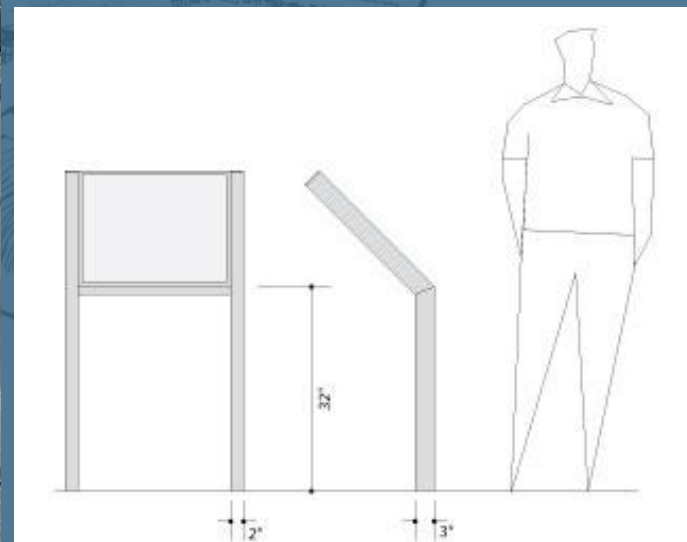
Trail to Treasure

Design Commission

2/16/2012



- 36"x24" low profile standard base 45° angle
- Black powder coated aluminum frame
- Base plate mount with epoxy grouted anchor bolts



Going for Gold



Historical photograph of prospector's with gear entering the Yukon.



Historical photograph of prospector with gear showing the volume of required supplies.

Historical photograph of pioneer outfitter store with prospectors in front.

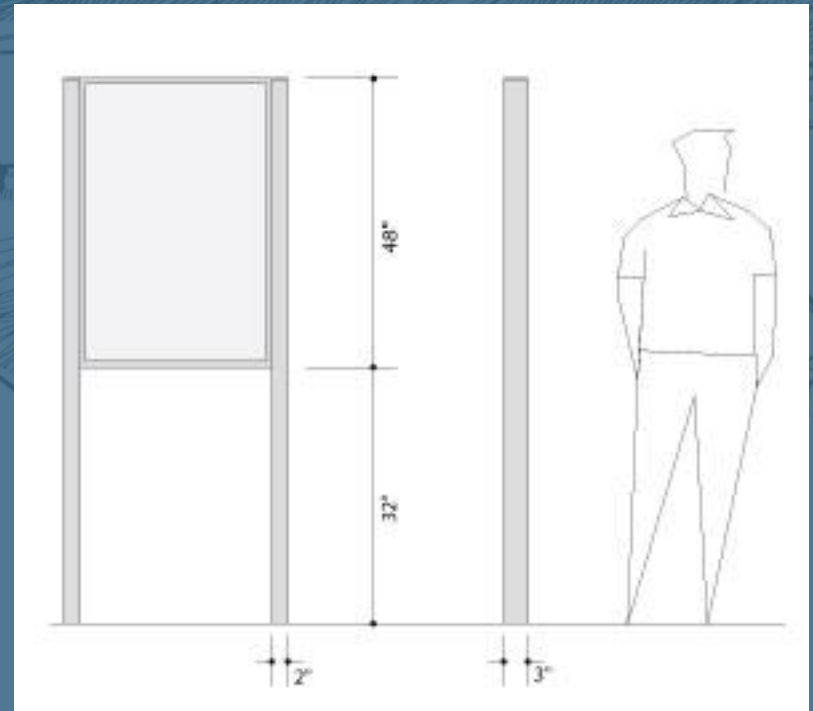


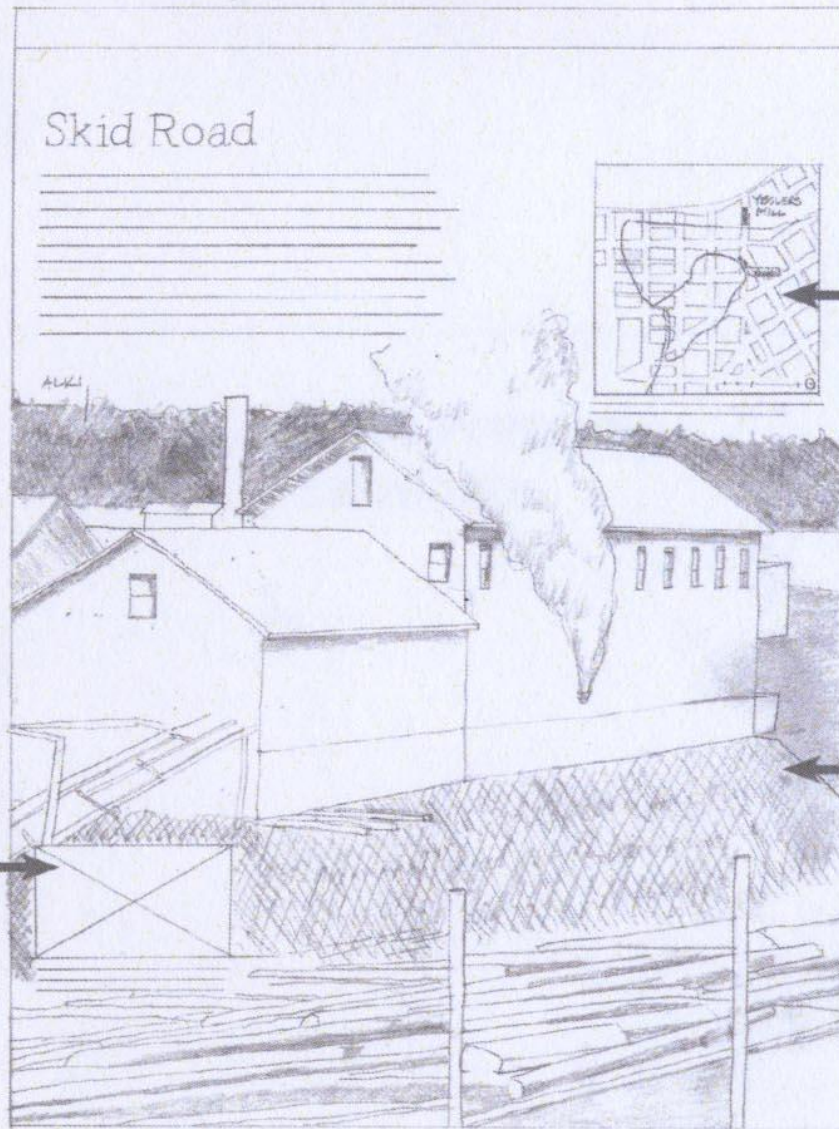
Skid Road/Preservation Anchor



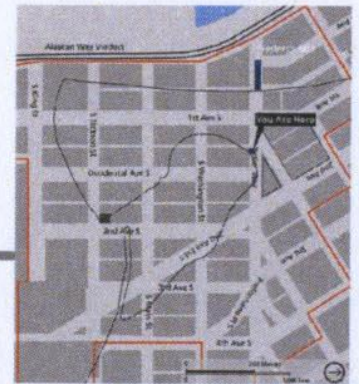


- 36"x48" upright double sided standard base
- Black powder coated aluminum frame
- Base plate mount with epoxy grouted anchor bolts





Historical photograph of Yesler Way / Skid Road facing west toward Yesler's Mill.



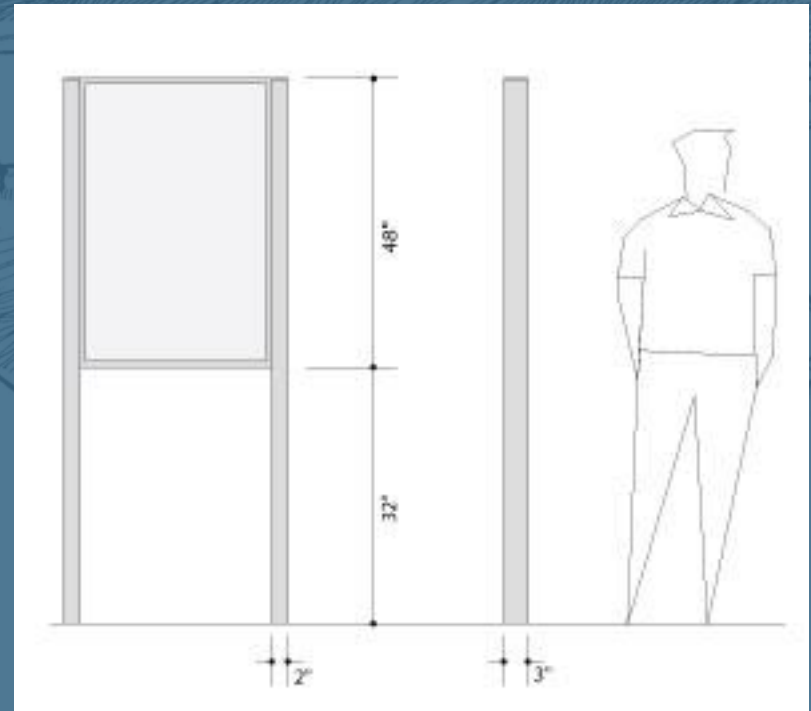
New graphic showing Yesler's Mill on the 1880 shoreline in relation to the current urban fabric, shoreline, and wayside.



Historical photograph of Yesler's Mill with logs in surrounding water.



- 36"x48" upright double sided standard base
- Black powder coated aluminum frame
- Base plate mount with epoxy grouted anchor bolts



Urban Renewal

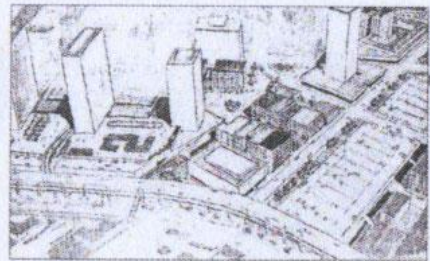
Headlines from local papers describing community efforts to preserve Pioneer Square.

The Seattle Times
Council Old building despite
Pioneer Square restoration

The Seattle Daily Times
Pioneer Square restoration
assures new investment

The City Herald
Preservation
Favored in
Resort Law

SEATTLE
HOTEL



Repurpose illustration of new development concept for Pioneer Square.



Historical photograph of Seattle Hotel and Pioneer Square.

Design Commission Presentation

The logo is a teal square with a white border. Inside, the text "TRAIL to TREASURE" is written in white. "TRAIL" is in a bold, sans-serif font, "to" is in a smaller, lowercase script font, and "TREASURE" is in a larger, bold, sans-serif font. A white silhouette of a building with two steeply pitched roofs is positioned behind the text.

TRAIL to TREASURE