

SOUTH PORTAL DESIGN COMMISSION MEETING

Feb 2, 2012

LANDSCAPE CONCEPT

Pull the powerful forested landscape westward from the Mountains.

Frame the entry into the city for drivers as they rise over Atlantic Street.

Transition to the order and lower speed of the city with street trees and the language of the “boulevard” of Alaskan Way.

urban
street trees
linear deciduous

landing point

connect E-W

crisp
angles, folds
play with perspective

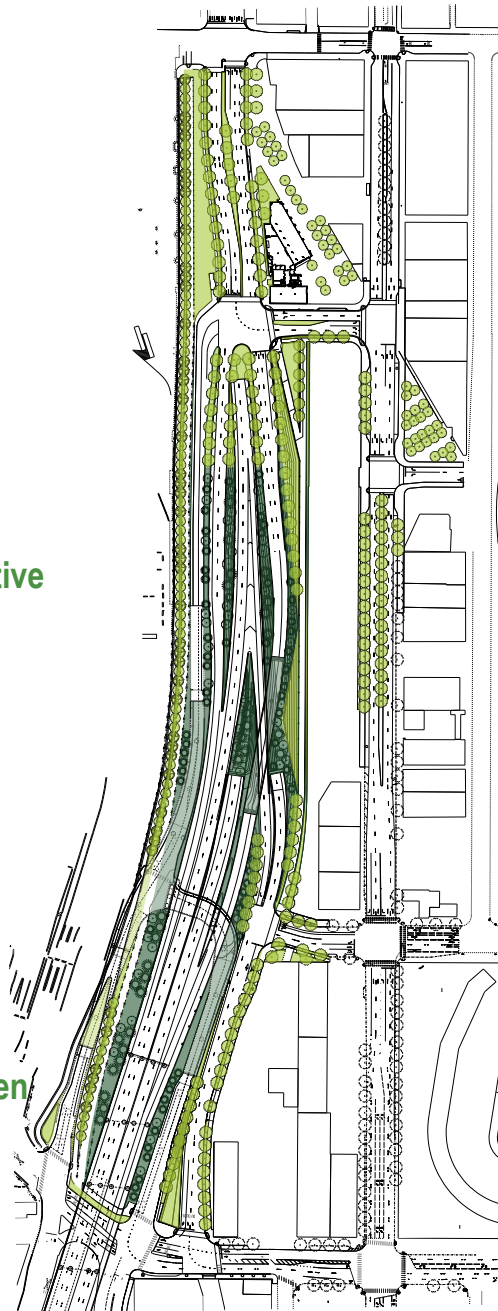
increased canopy

consider
scale at edges

framed city views

clustered evergreen

urban at street

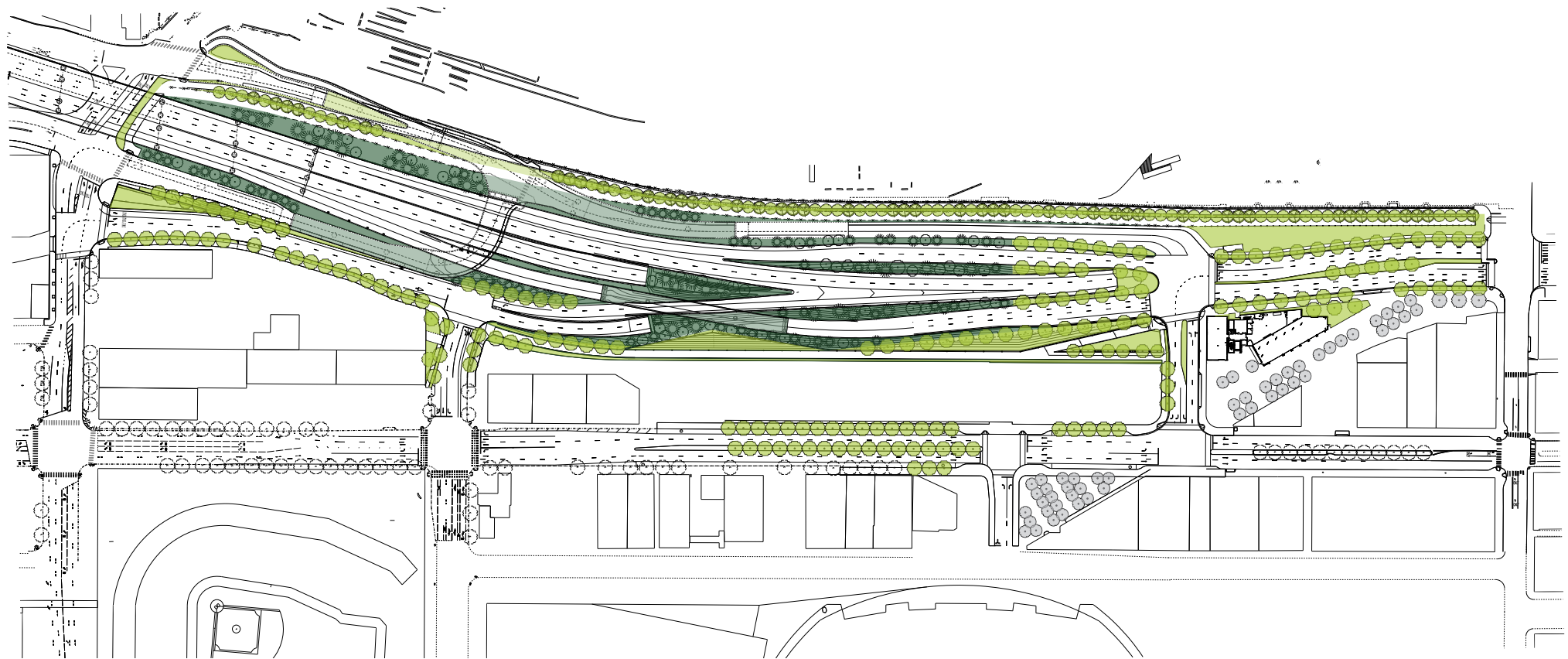


Take cues from the crisp, angular approach taken in the Olympic Sculpture Park, adapted to the landscape opportunities at the portal.

Take advantage of opportunities for views through to the Port activities and water.

Take an attitude toward the edges that supports the overall concept and addresses the scale of zones where people will walk or cycle.

SOUTH PORTAL AREA URBAN VS. NON-URBAN



URBAN
NON-URBAN

SOUTH PORTAL AREA LANDSCAPE ZONES

SR 99 MAINLINE

Frame city views with Pacific NW landscape
Mimic large scale of SODO and Port

ALASKAN WAY

Tree-lined urban boulevard
begins south of portal

PORT-SIDE TRAIL

Open views of working port
Holgate to King Street Guidelines

FRONTAGE ROAD

Urban and historic character
terminated by view of Bemis Building

FIRST AVENUE

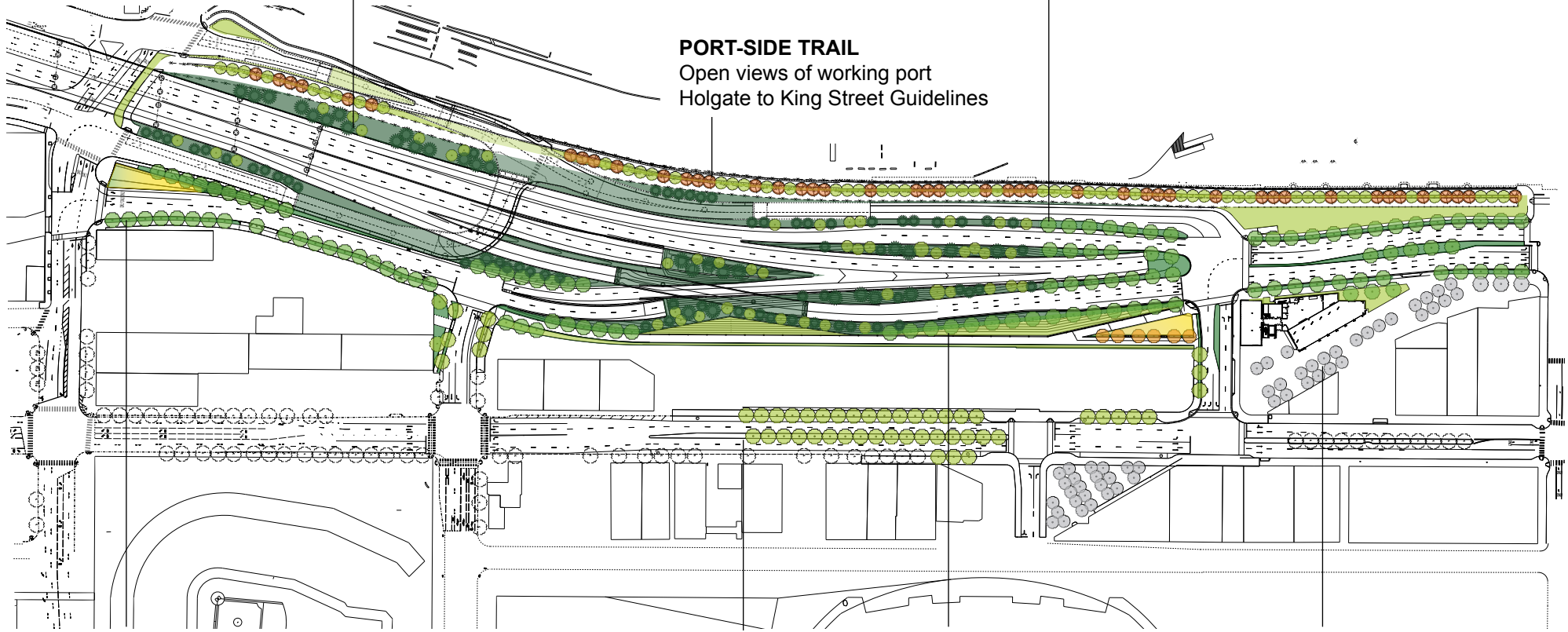
Extend existing character
of First Avenue

CITY-SIDE TRAIL

Bookend to
Olympic Sculpture Park

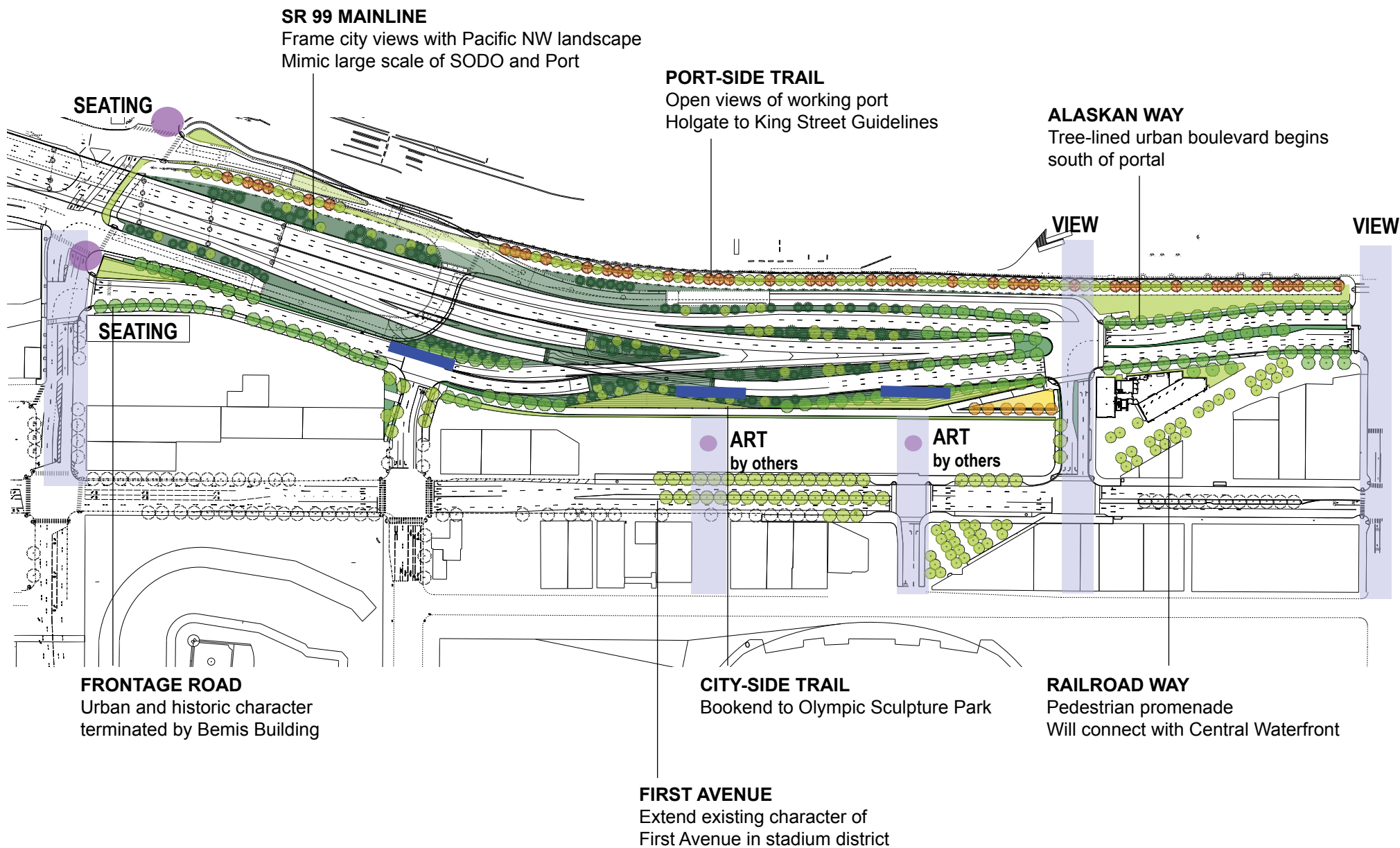
RAILROAD WAY

Tree-lined pedestrian promenade
Coordinate with Central Waterfront

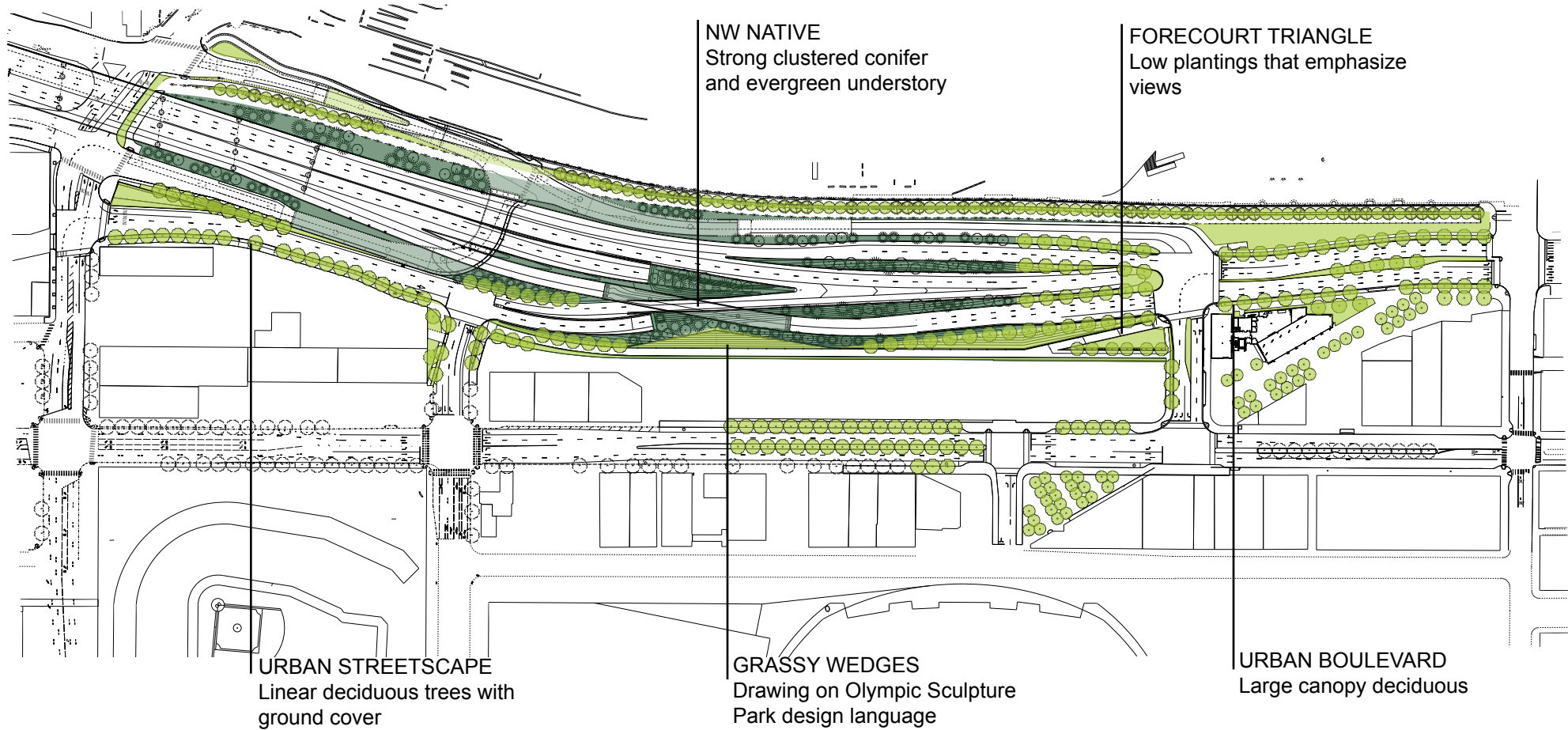


- GRASS WEDGE
- URBAN STREETSCAPE
- MEADOW FORECOURT
- PACIFIC NW NATIVE

SOUTH PORTAL AREA LANDSCAPE CHARACTER



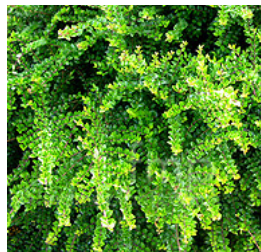
LANDSCAPE LANGUAGE



LANDSCAPE LANGUAGE: URBAN BOULEVARD



URBAN BOULEVARD



LANDSCAPE LANGUAGE: GRASS WEDGE



GRASS WEDGE



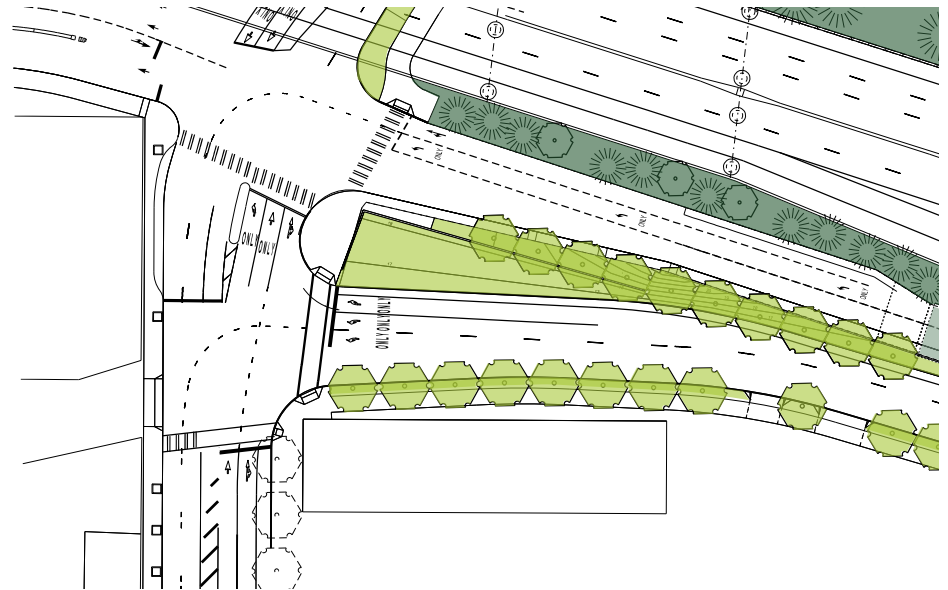
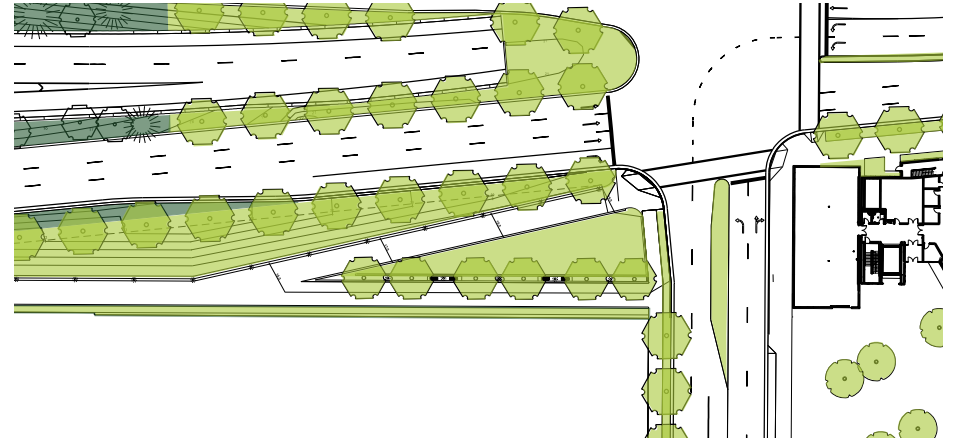
Alaskan Way Viaduct Replacement Program

LANDSCAPE LANGUAGE: NORTHWEST NATIVE

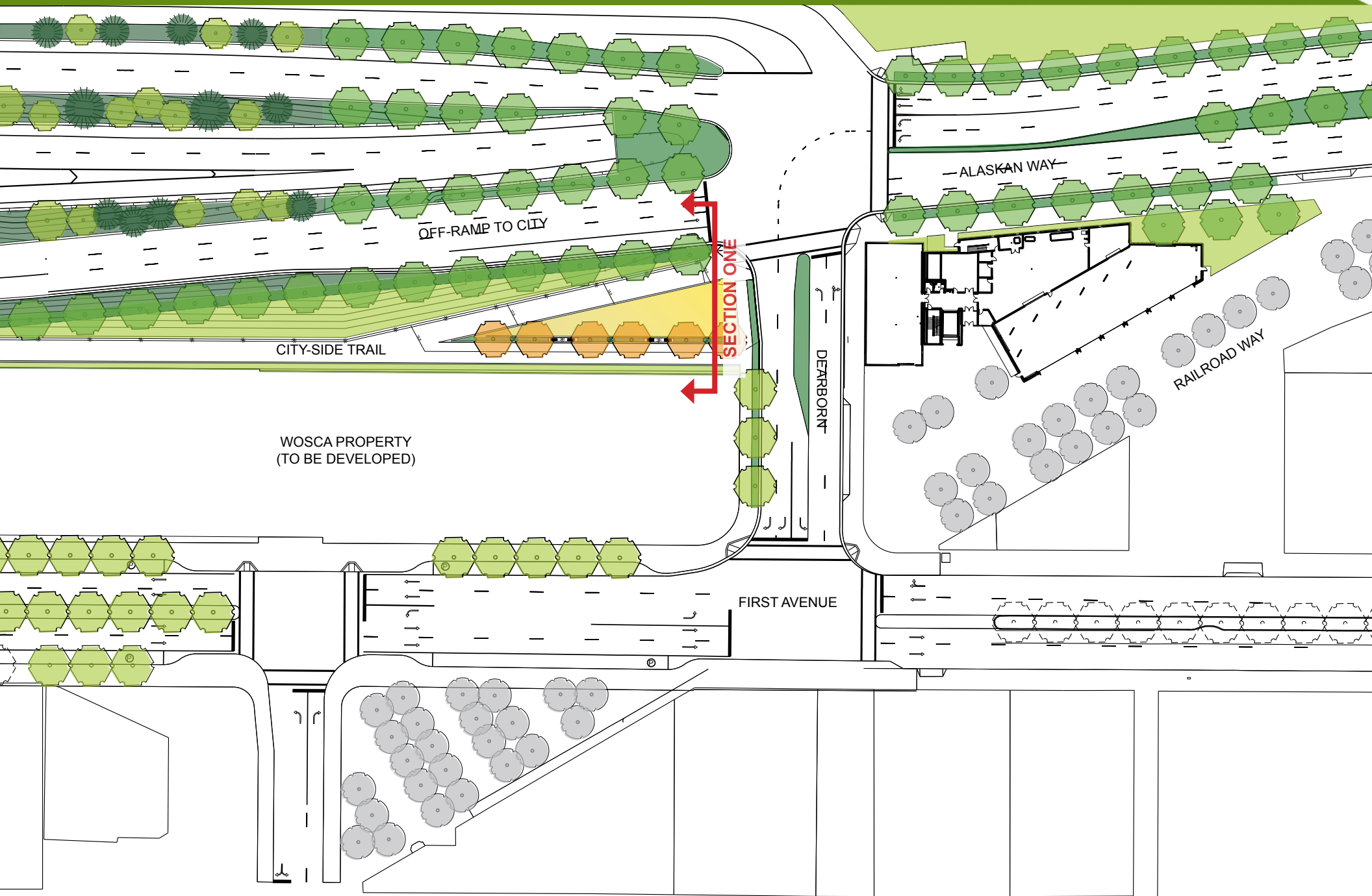


Alaskan Way Viaduct Replacement Program

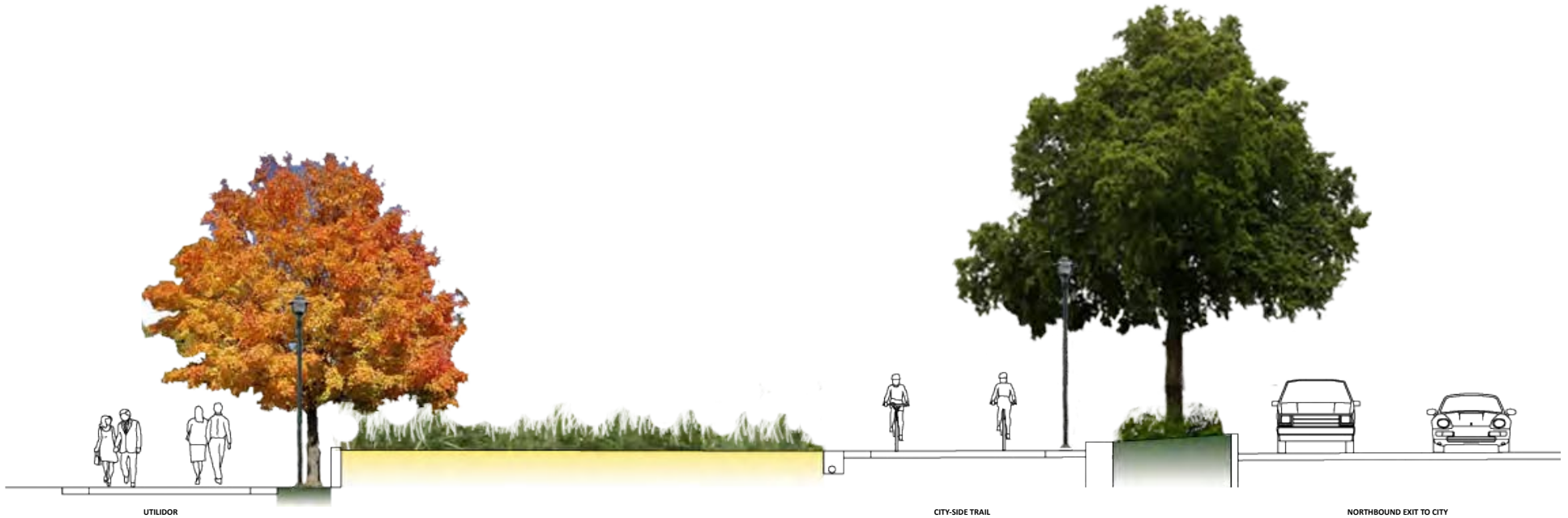
LANDSCAPE LANGUAGE: FORECOURT



CITY-SIDE TRAIL - SECTION ONE



CITY-SIDE TRAIL - SECTION ONE



UTILIDOR

Pedestrian “eddy” with benches, smaller trees, and urban shrubs.

FORECOURT MEADOW

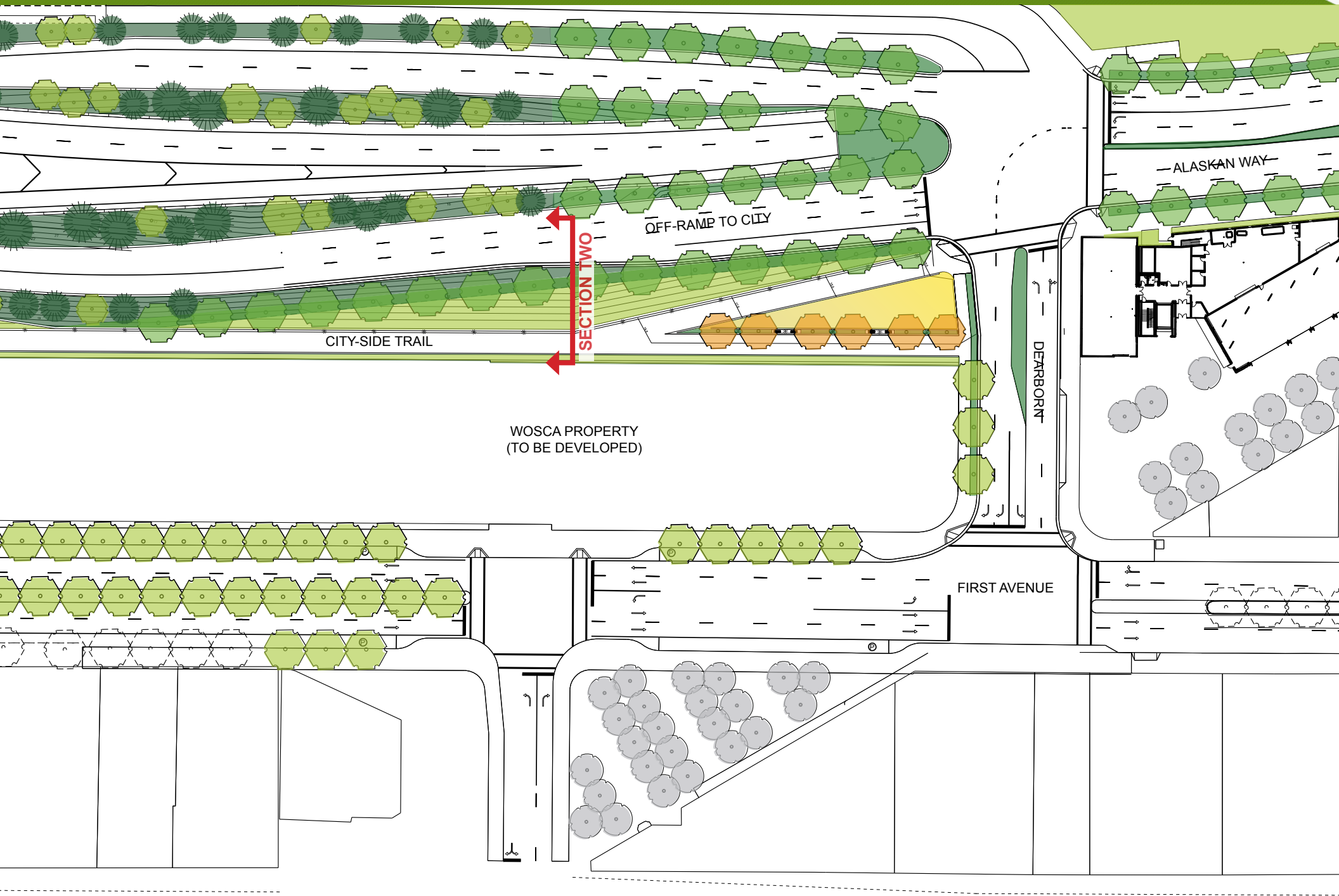
Taller grasses and flowers form a “forecourt” to the illuminated fan room across the street.

BOULEVARD EDGE

Large street trees with understory plantings buffer pedestrians from vehicles on northbound off-ramp to city.



CITY-SIDE TRAIL - SECTION TWO



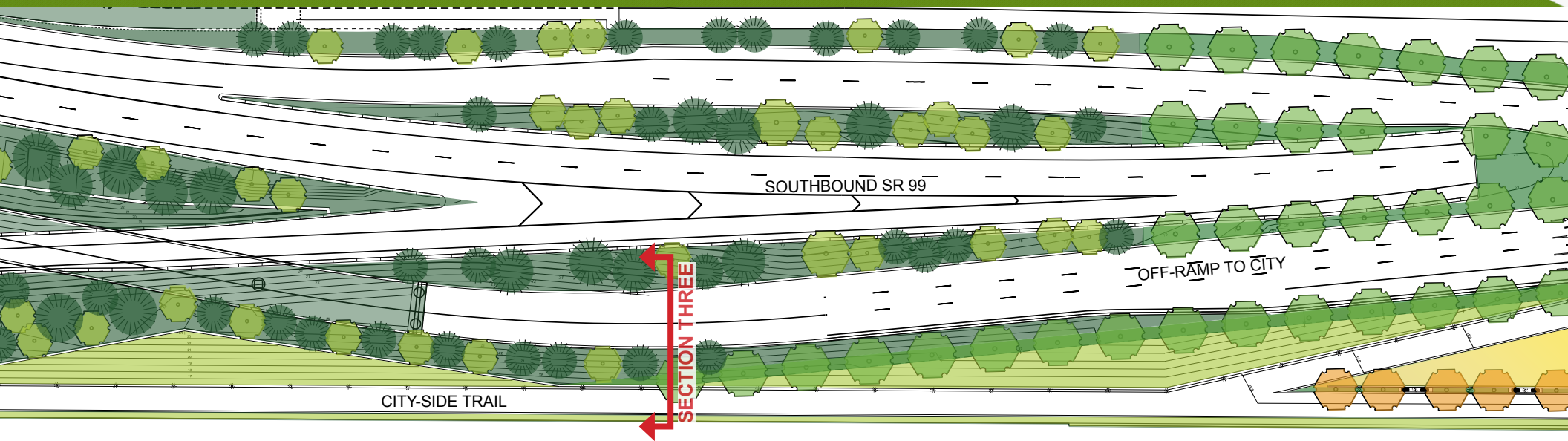
CITY-SIDE TRAIL - SECTION TWO



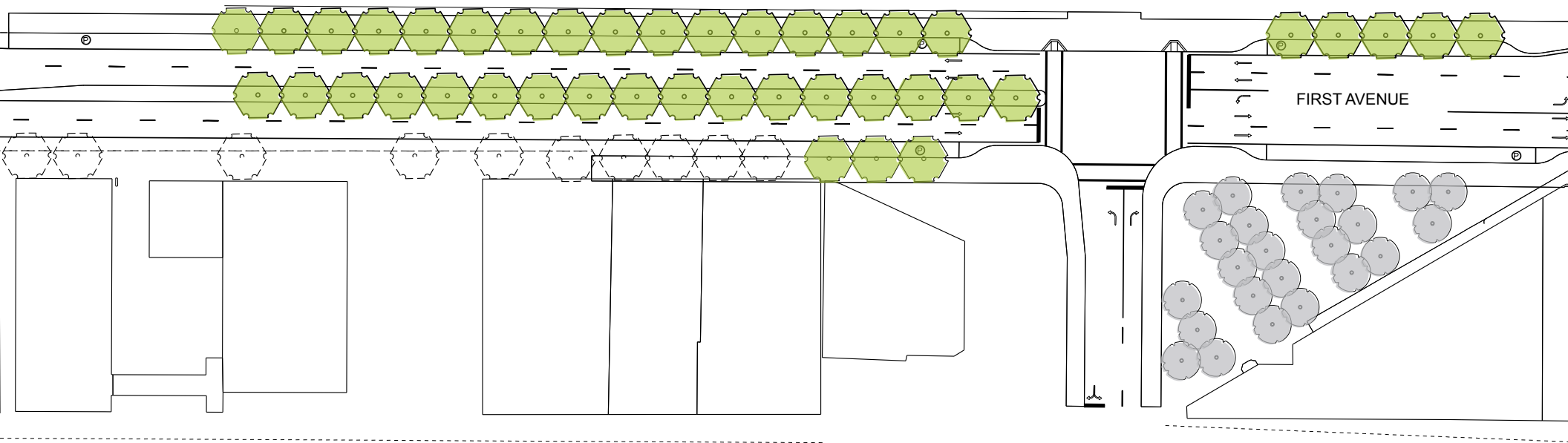
GRASS WEDGE



CITY-SIDE TRAIL - SECTION THREE



WOSCA PROPERTY
(TO BE DEVELOPED)

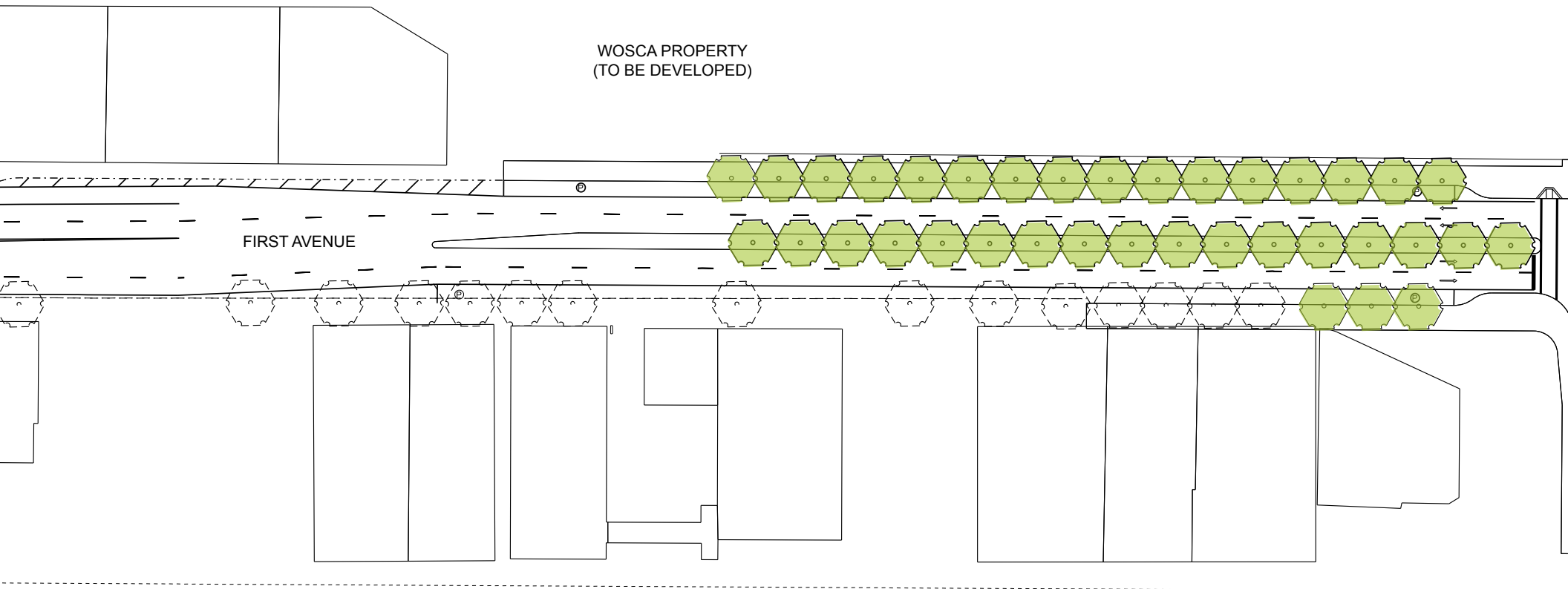
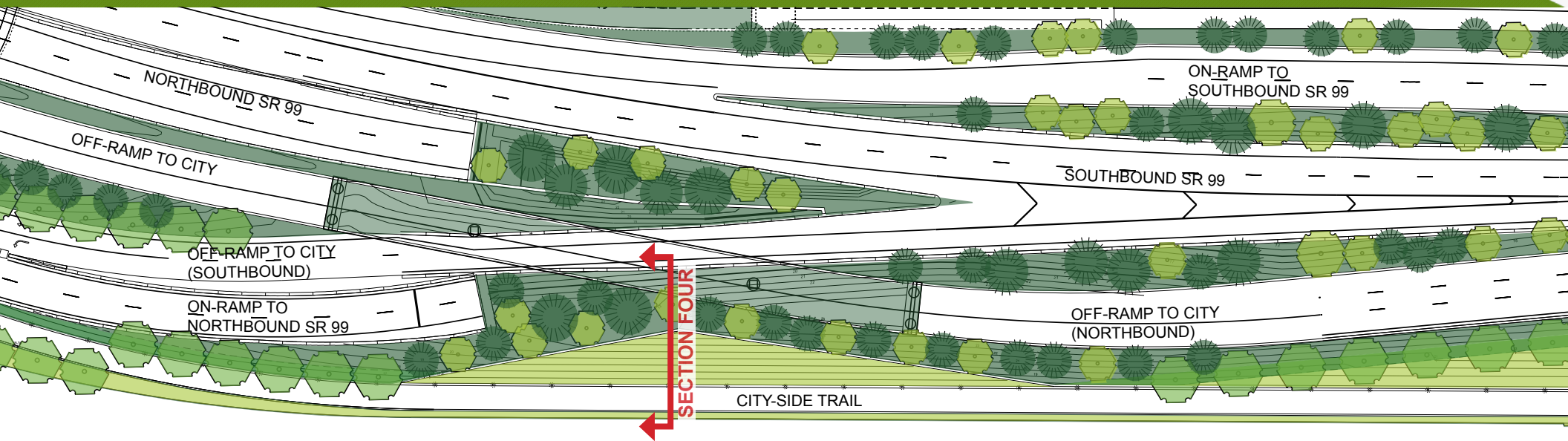


CITY-SIDE TRAIL - SECTION THREE

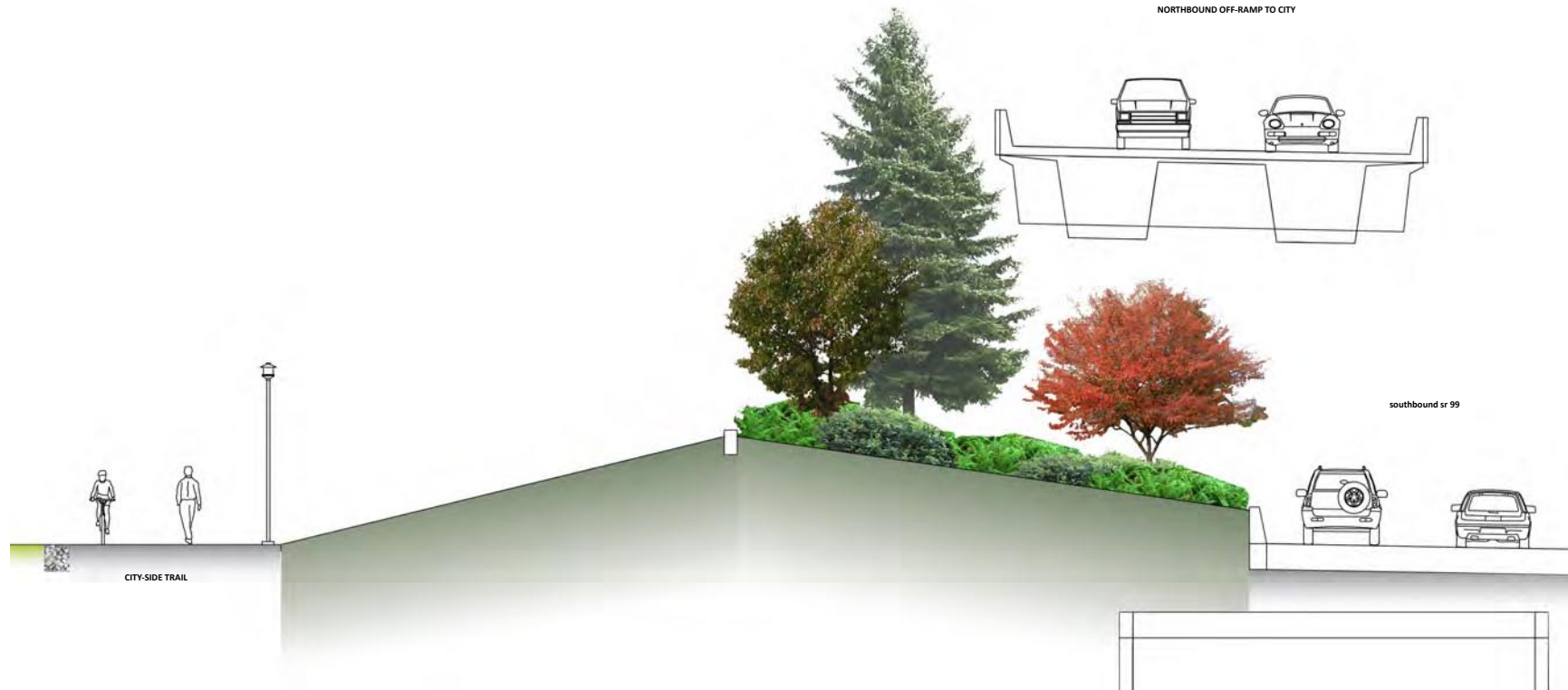
URBAN NORTHWEST LANDSCAPE



CITY-SIDE TRAIL - SECTION FOUR



CITY-SIDE TRAIL - SECTION FOUR



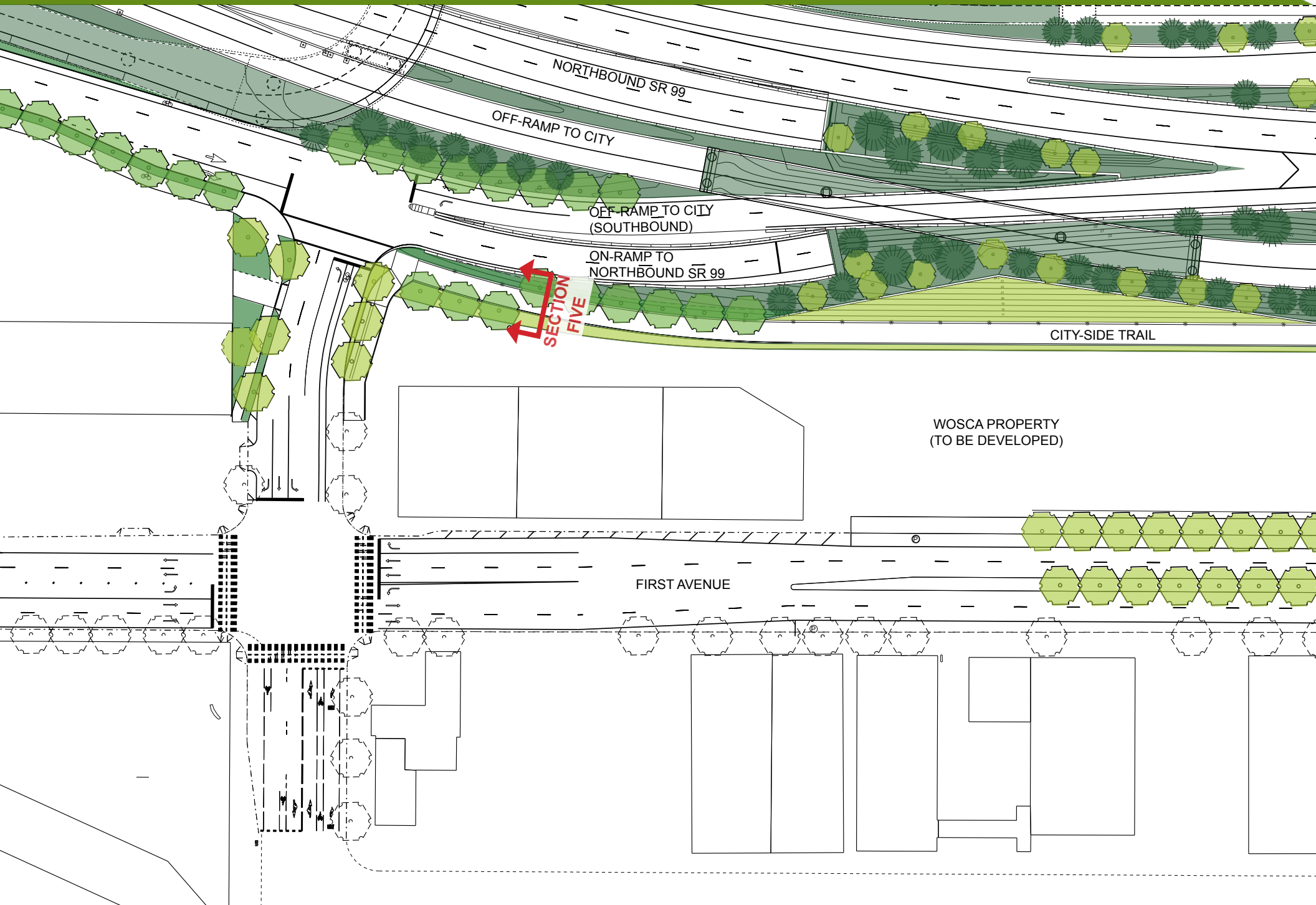
GRASS WEDGE



URBAN NORTHWEST LANDSCAPE



CITY-SIDE TRAIL - SECTION FIVE

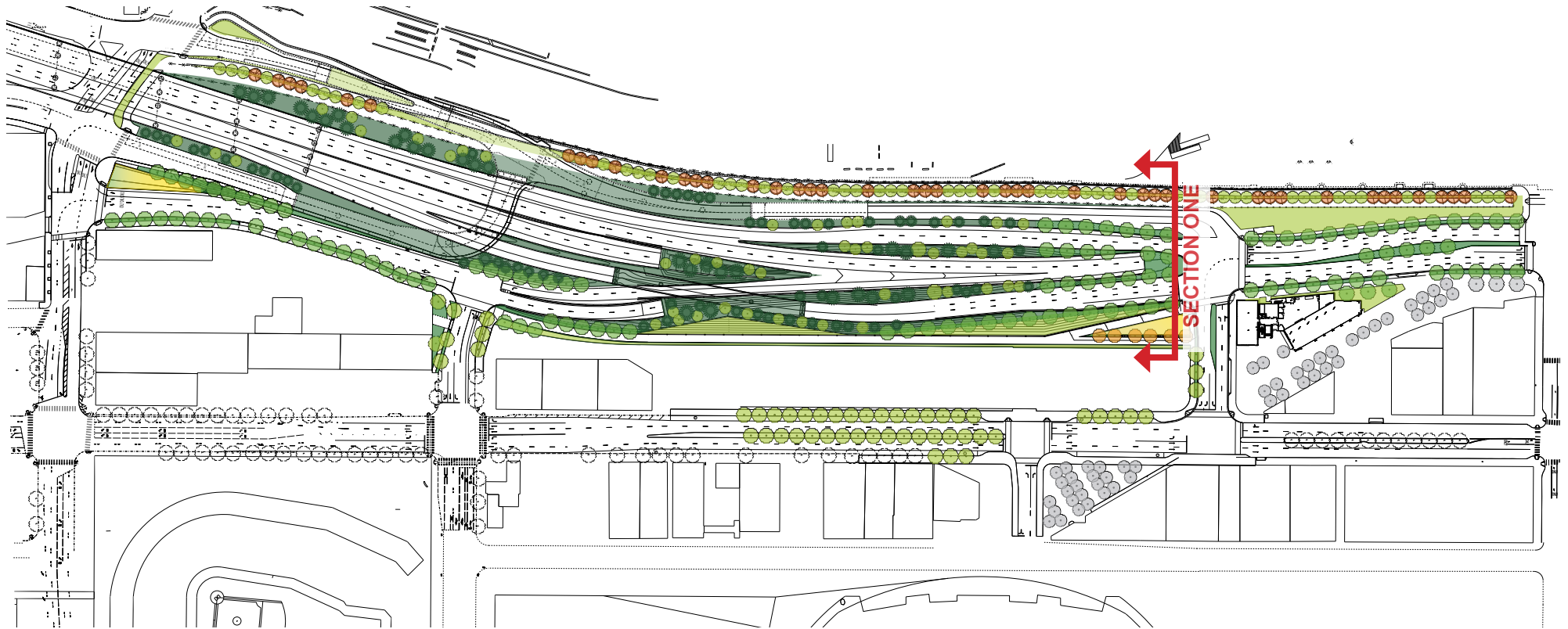


CITY-SIDE TRAIL - SECTION FIVE

TRAIL WITH URBAN EDGES



SOUTH PORTAL LANDSCAPE CHARACTER - SECTION ONE



SOUTH PORTAL LANDSCAPE CHARACTER - SECTION ONE



URBAN EDGE



FORECOURT



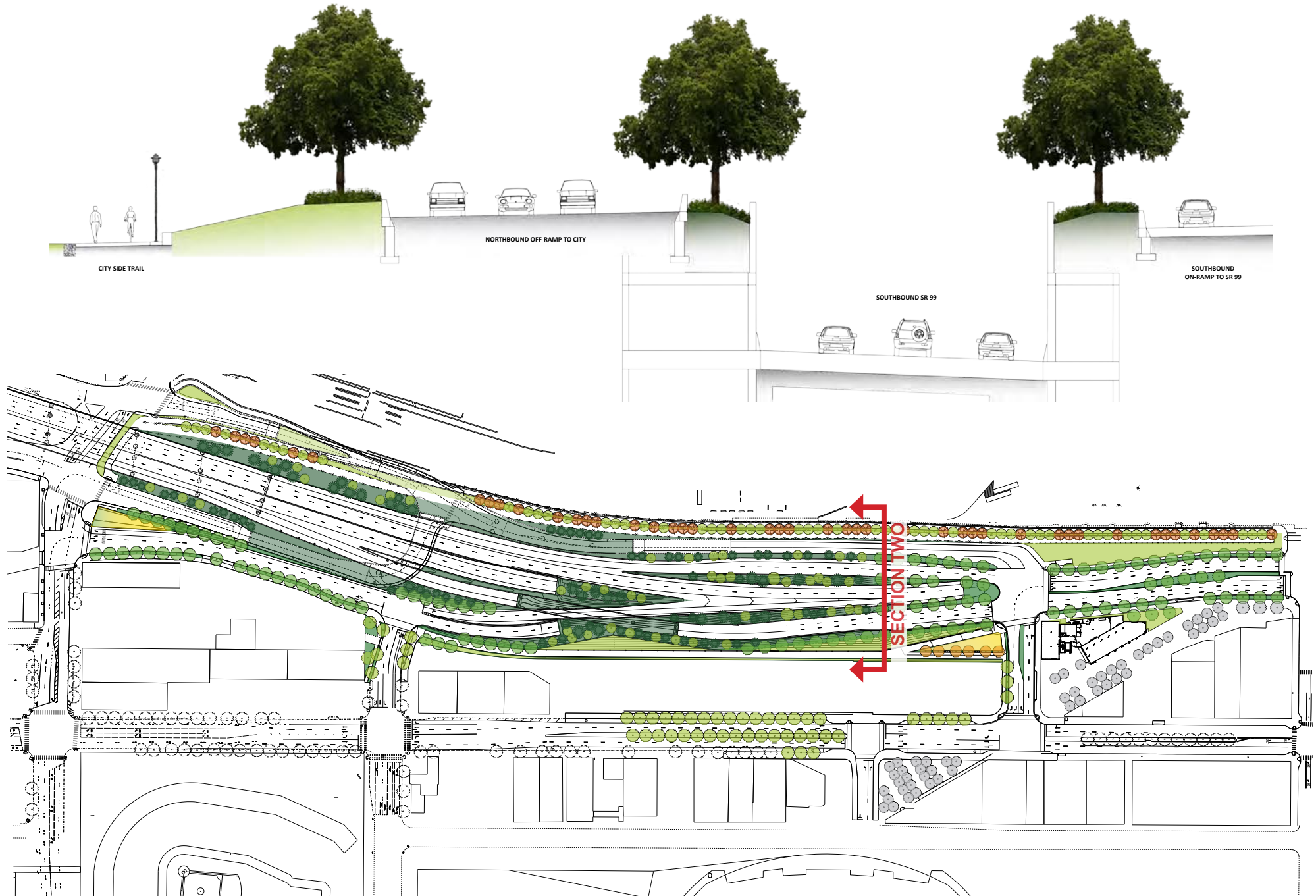
URBAN BOULEVARD



PORT-SIDE TRAIL



SOUTH PORTAL LANDSCAPE CHARACTER - SECTION TWO



SOUTH PORTAL LANDSCAPE CHARACTER - SECTION TWO



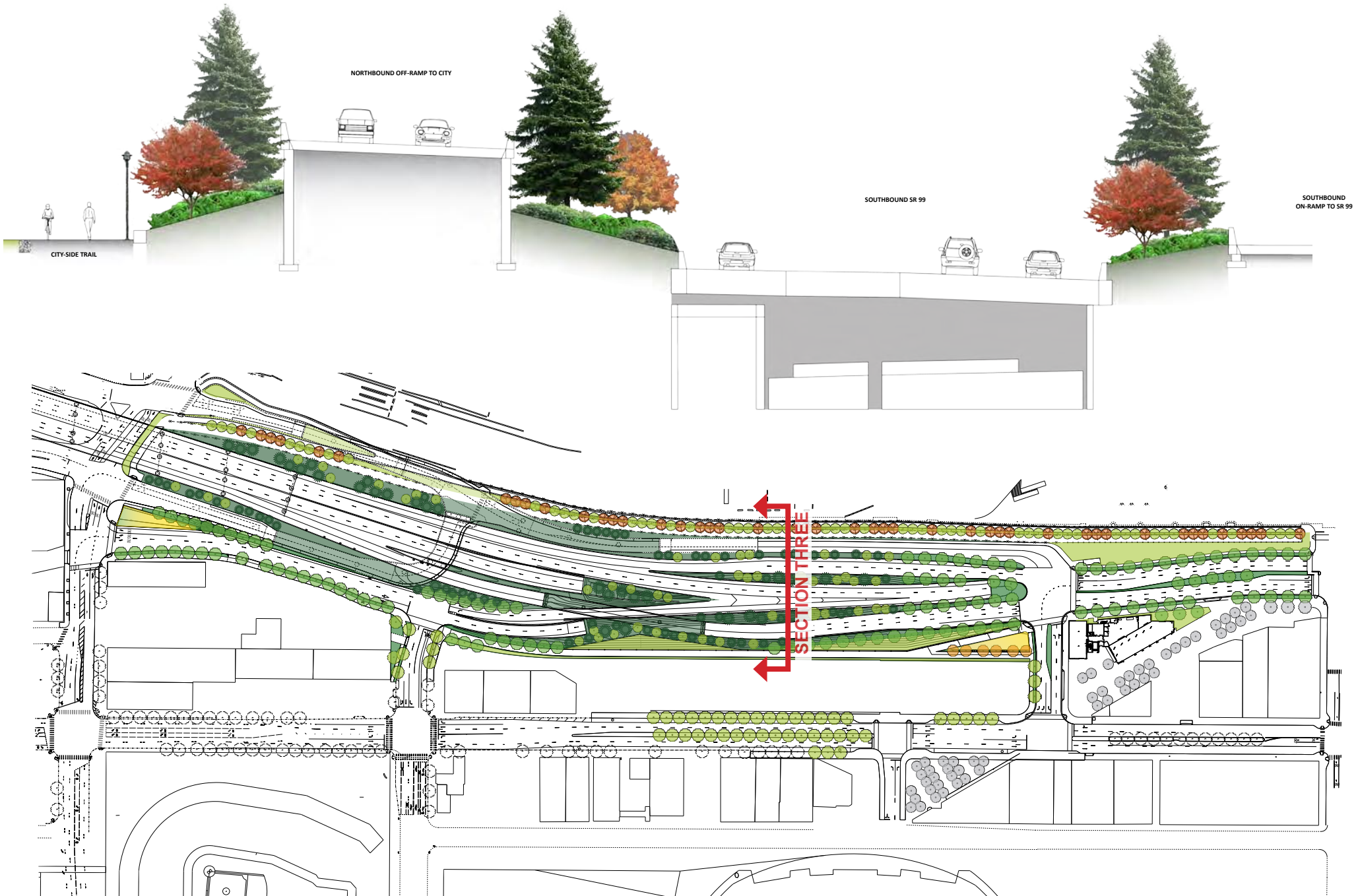
GRASS WEDGE



URBAN BOULEVARD



SOUTH PORTAL LANDSCAPE CHARACTER - SECTION THREE



SOUTH PORTAL LANDSCAPE CHARACTER - SECTION THREE



URBAN NORTHWEST LANDSCAPE

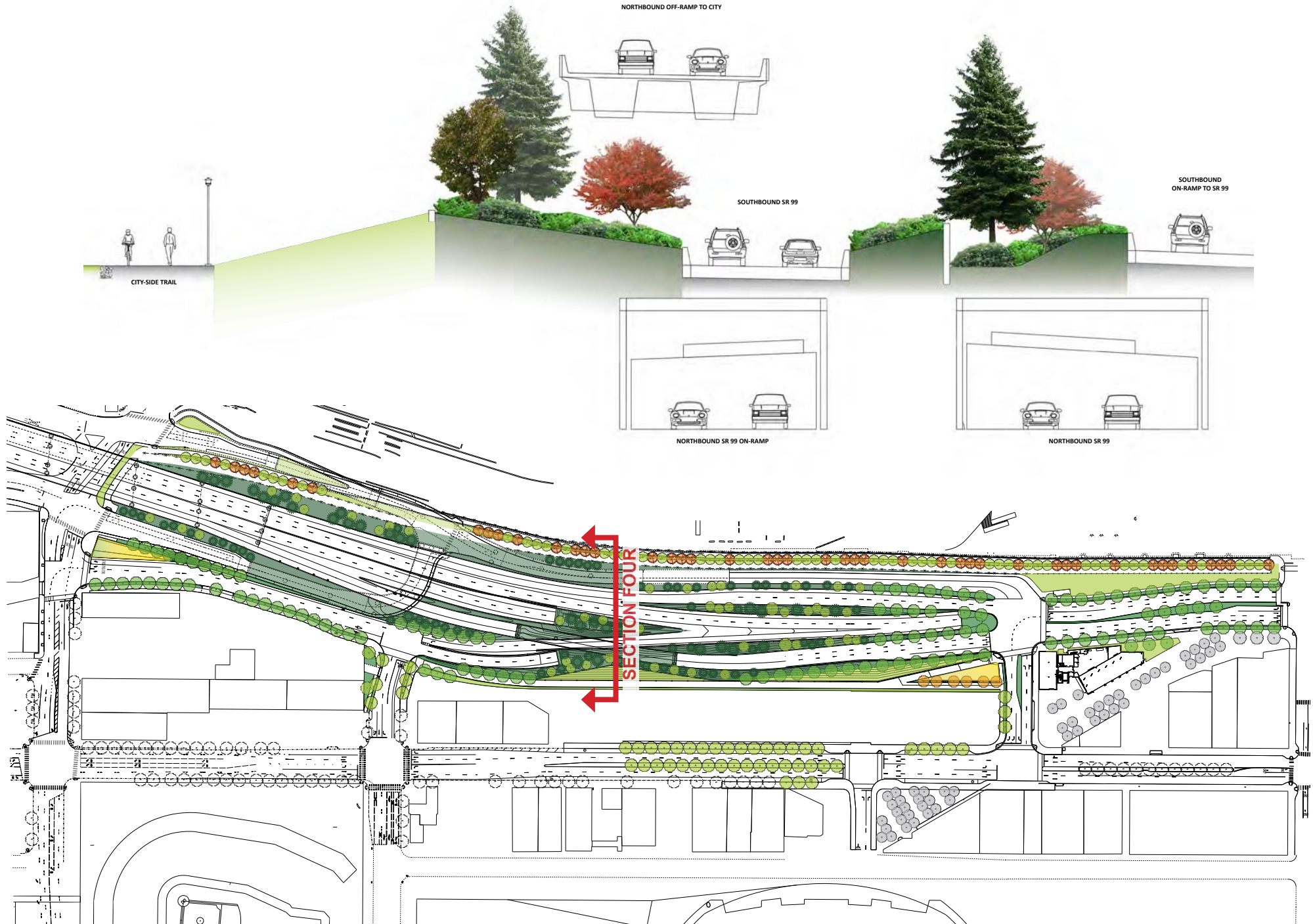


Native northwest at Sculpture Park

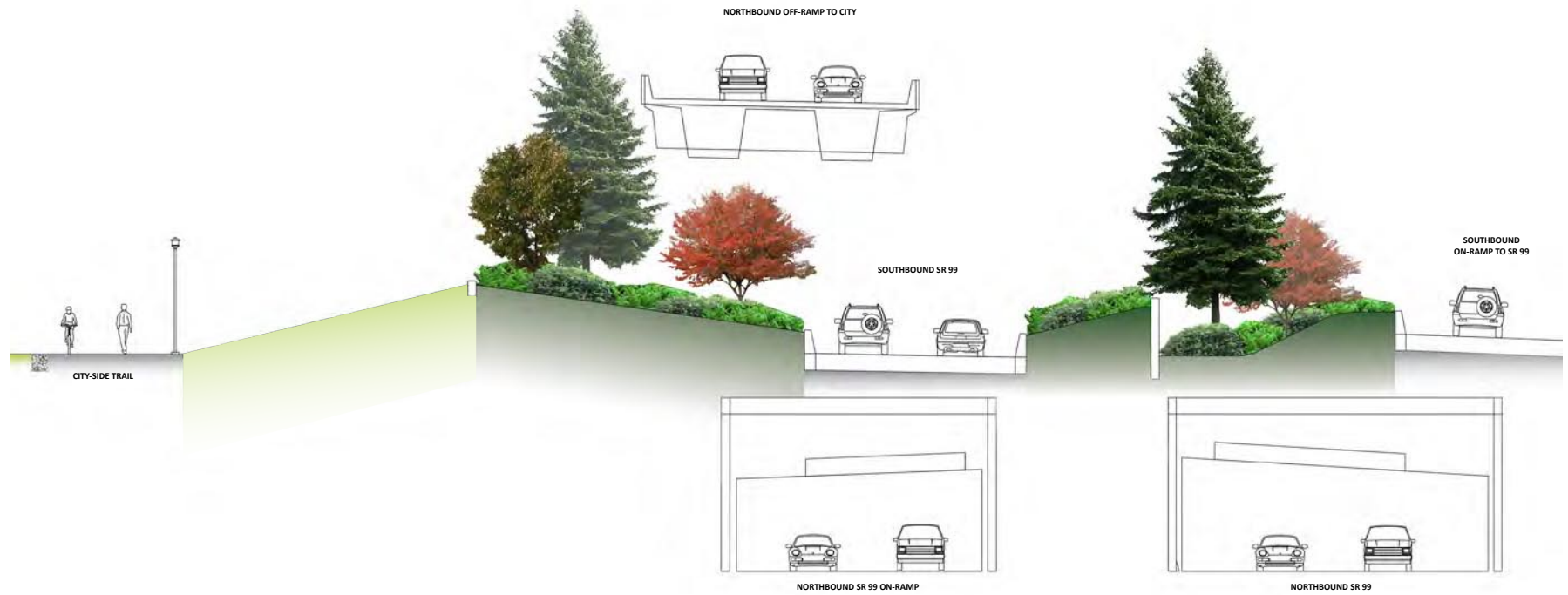


Native northwest on I-90 Mercer Lid

SOUTH PORTAL LANDSCAPE CHARACTER - SECTION FOUR



SOUTH PORTAL LANDSCAPE CHARACTER - SECTION FOUR



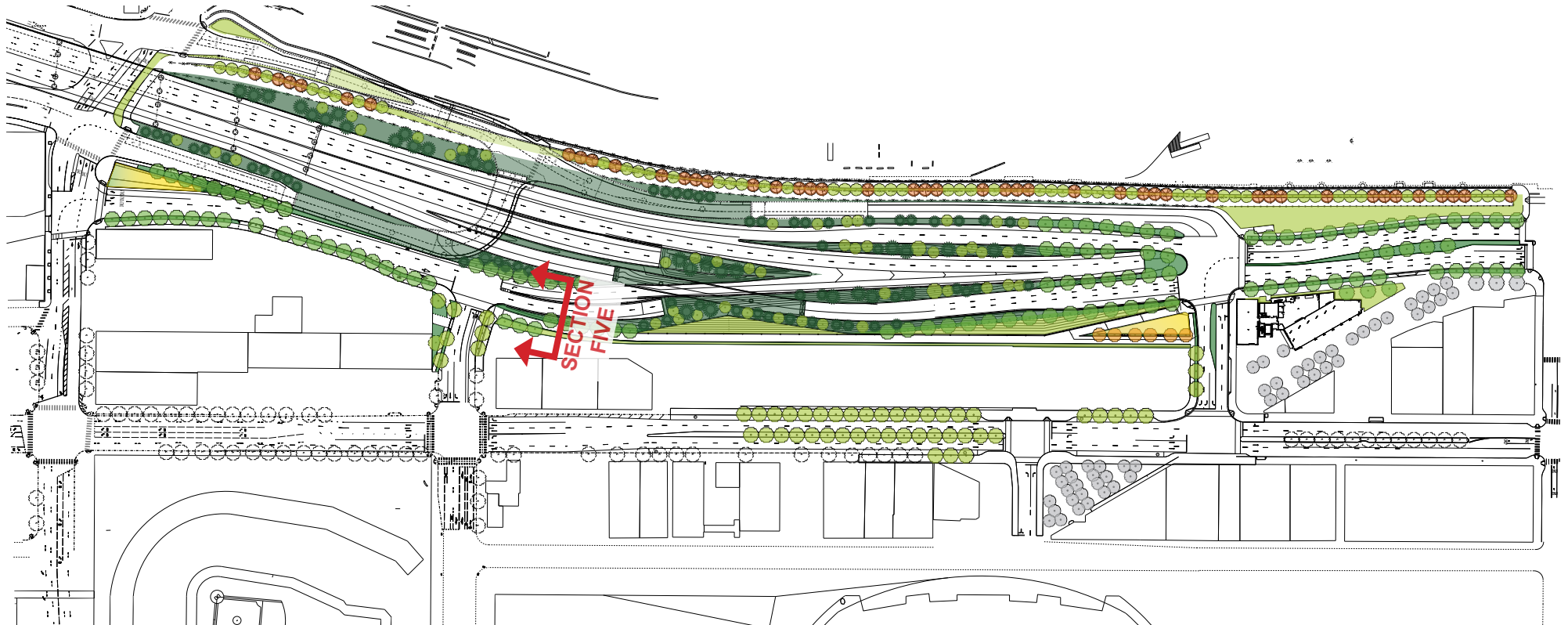
GRASS WEDGE



URBAN NORTHWEST LANDSCAPE



SOUTH PORTAL LANDSCAPE CHARACTER - SECTION FIVE



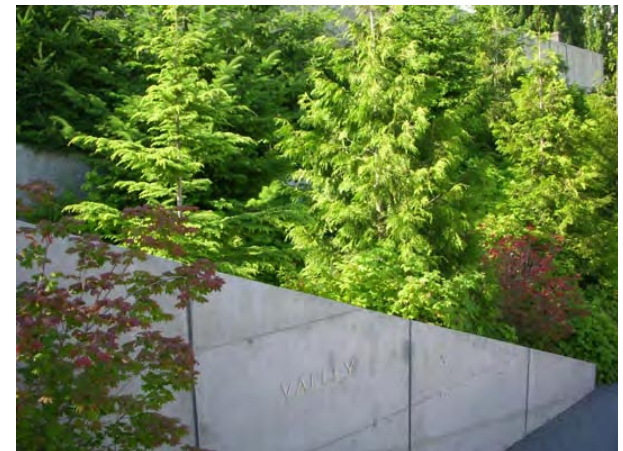
SOUTH PORTAL LANDSCAPE CHARACTER - SECTION FIVE



URBAN TRAIL EDGE



URBAN NORTHWEST LANDSCAPE



Alaskan Way Viaduct Replacement Program



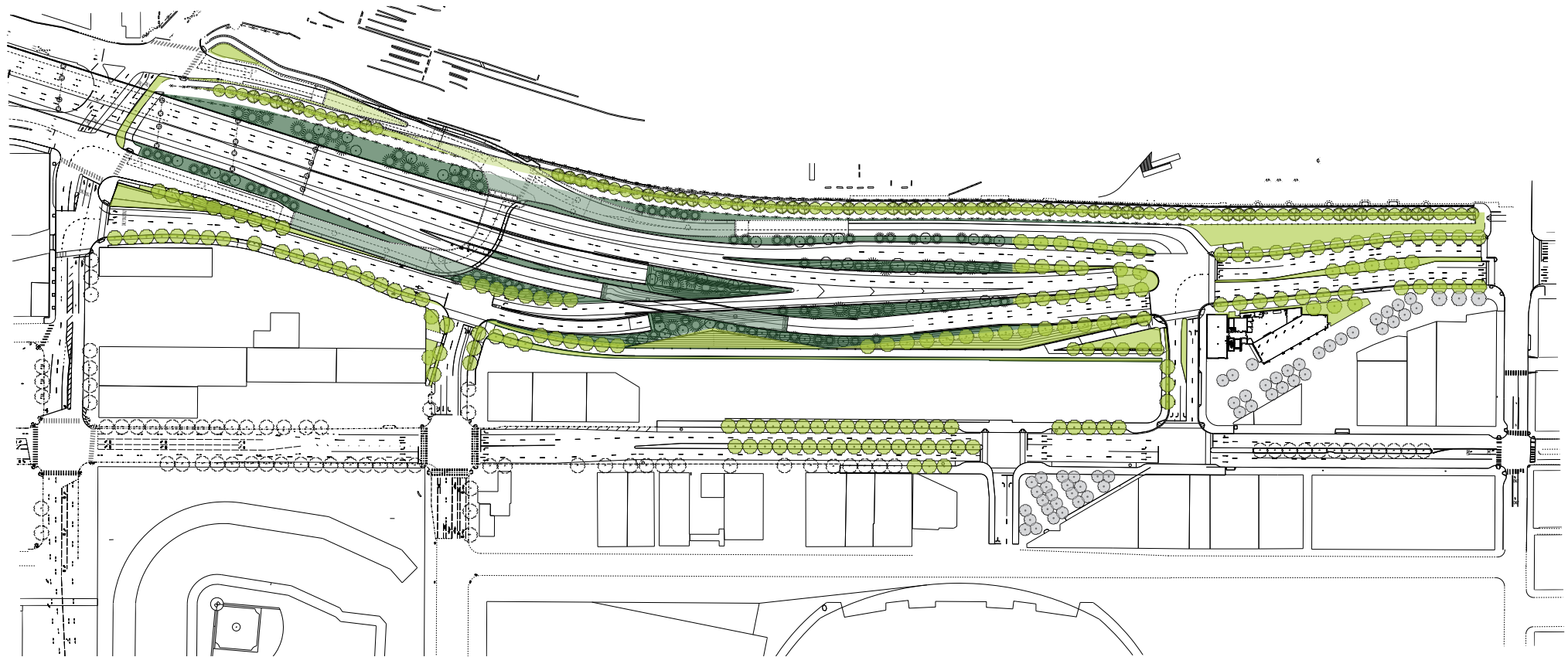
Alaskan Way Viaduct Replacement Program



Alaskan Way Viaduct Replacement Program



SOUTH PORTAL AREA URBAN VS. NON-URBAN



URBAN
NON-URBAN