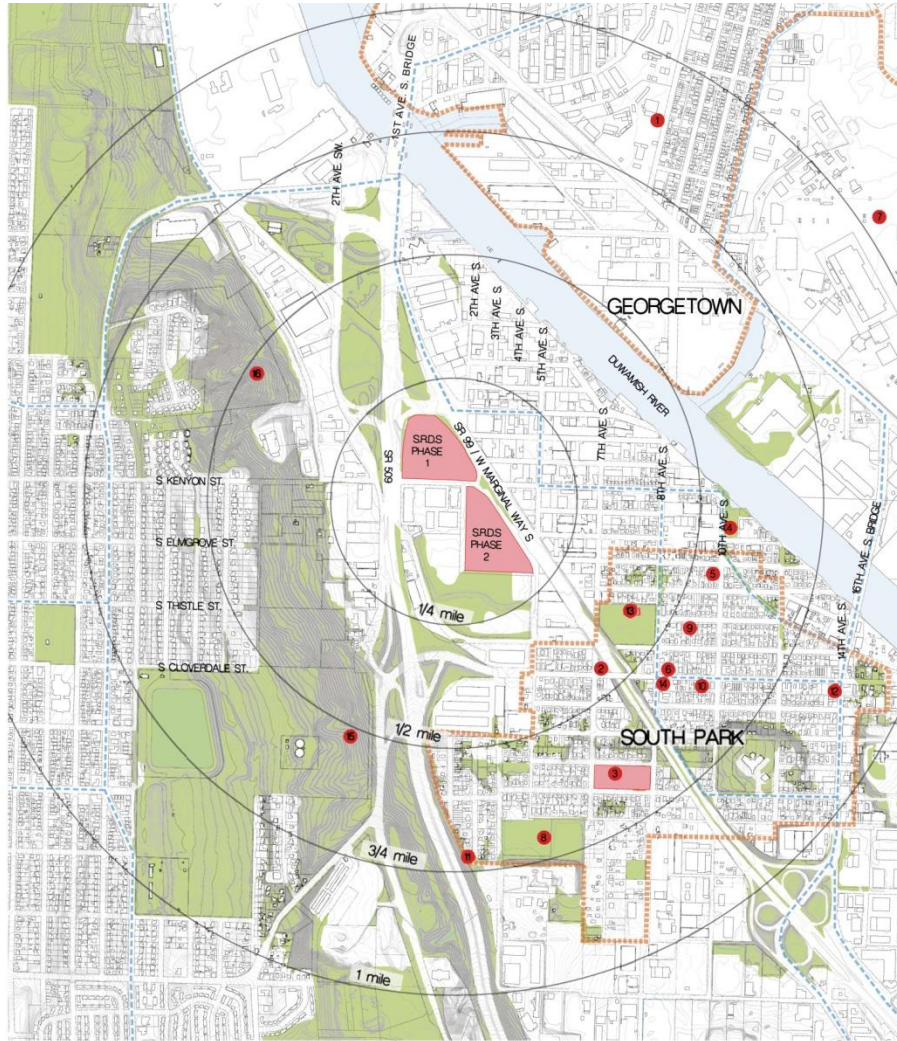


# **SOUTH TRANSFER STATION**

Design Commission – May 6, 2010

City of Seattle  
Seattle Public Utilities  
Seattle, Washington



#### LEGEND

- COMMUNITY AMENITIES
- GREEN SPACE / WETLANDS
- URBAN VILLAGE BOUNDARY
- PATHS / TRAILS
- 1 CAMPANA QUETZAL
- 2 CESAR CHAVEZ PARK
- 3 CONCORD SCHOOL
- 4 DUWAMISH WATERWAY PARK
- 5 ENVIRONMENTAL COALITION OF GROWTH ACROSS SEATTLE
- 6 FREESTATION
- 7 KING COUNTY AIRPORT
- 8 MAPPA FARM
- 9 NEW HOPE PRESBYTERIAN CHURCH
- 10 OROMO CHURCH
- 11 SEAMAR BOXING
- 12 SEAMAR COMMUNITY HEALTH CENTER
- 13 CLINICA DE COMUNIDAD
- 14 SOUTH PARK COMMUNITY CENTER
- 15 SOUTH PARK LIBRARY
- 16 WESTCREEK PARK
- 17 WEST DUWAMISH GREENBELT



## SOUTH TRANSFER STATION REBUILD PUBLIC OPEN HOUSE

TEAM MORTENSON | URS

City of Seattle  
Seattle Public Utilities  
Seattle, Washington

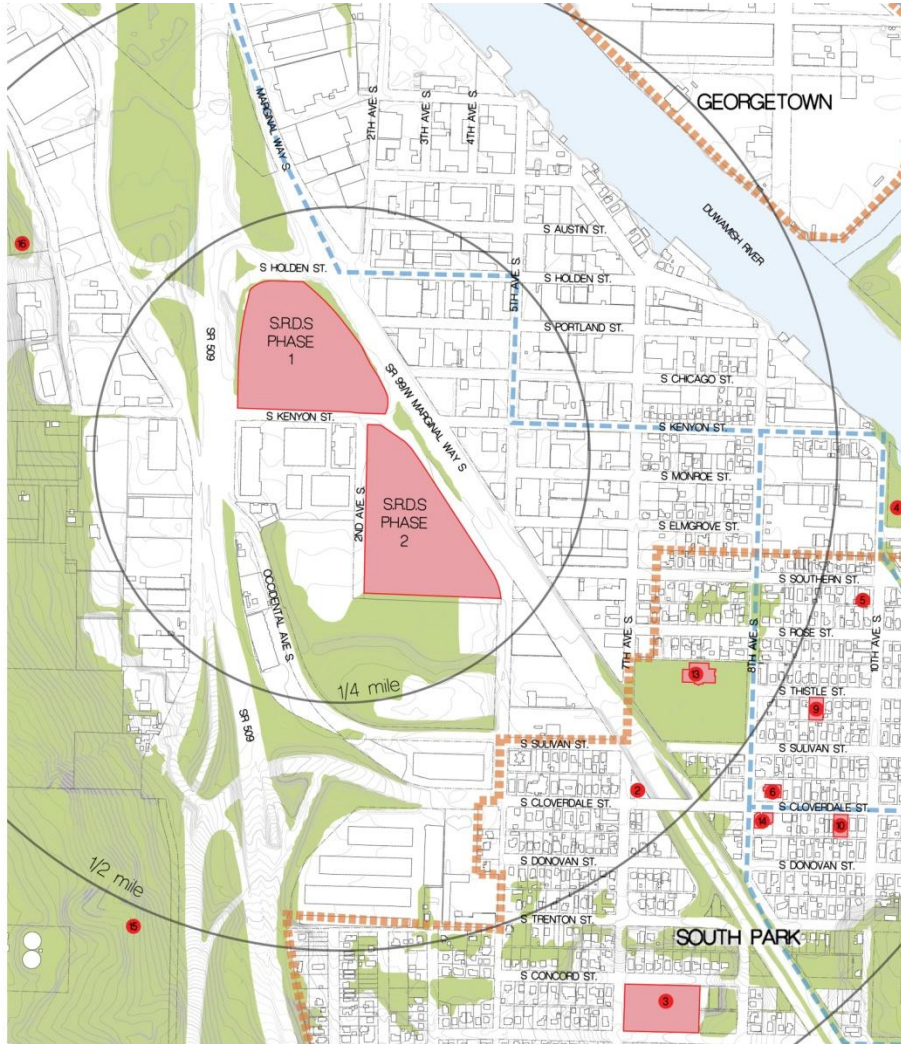
Community Context Plan

0 300' 600' 1200'  
Scale

31 March 2010

Sheet G002





- LEGEND**
- COMMUNITY AMENITIES
  - GREEN SPACE / WETLANDS
  - URBAN VILLAGE BOUNDARY
  - PATHS / TRAILS
- 1 CAMPANA GLEZAL
  - 2 CESAR CHAVEZ PARK
  - 3 CONCORD SCHOOL
  - 4 DUWAMISH WATERWAY PARK
  - 5 ENVIRONMENTAL COALITION OF GROWTH ACROSS SEATTLE
  - 6 FREESTATION
  - 7 KING COUNTY AIRPORT
  - 8 MAPPA FARM
  - 9 NEW HOPE PRESBYTERIAN CHURCH
  - 10 OROMO CHURCH
  - 11 SEAMAR BOILING
  - 12 SEAMAR COMMUNITY HEALTH CENTER
  - 13 SOUTH PARK COMMUNITY CENTER
  - 14 SOUTH PARK LIBRARY
  - 15 WESTCREST PARK
  - 16 WEST DUWAMISH GREENBELT



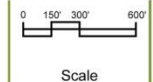
## SOUTH TRANSFER STATION REBUILD

PUBLIC OPEN HOUSE

TEAM MORTENSON | URS

City of Seattle  
Seattle Public Utilities  
Seattle, Washington

Site Context Plan



31 March 2010

Sheet G003

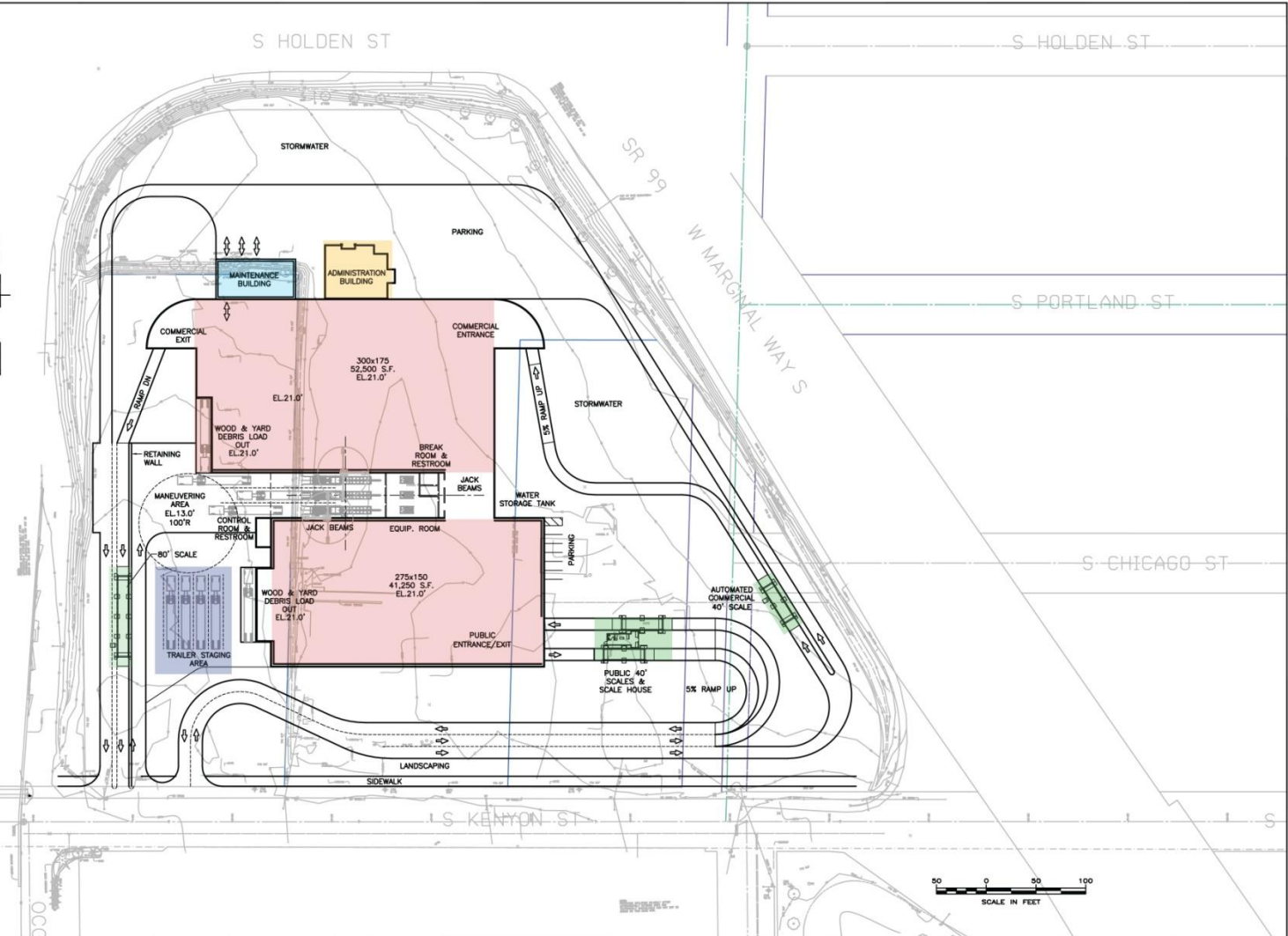




# ALTERNATE 3 FOR NORTH LOT (BUS YARD SITE)

SR 509

1ST AVE S



JOB No.	DESIGNED:	PROJ. ENGINEER:
SCALE:	DRAWN BY:	APPROVED BY:
AS NOTED	PCF	
CHECKED BY:	DATE:	
	JAN. 2008	

WARNING
IF BAR DOES NOT MEASURE 1" AT FULL SIZE, THEN SCALES ON DRAWING NOT TO SCALE.

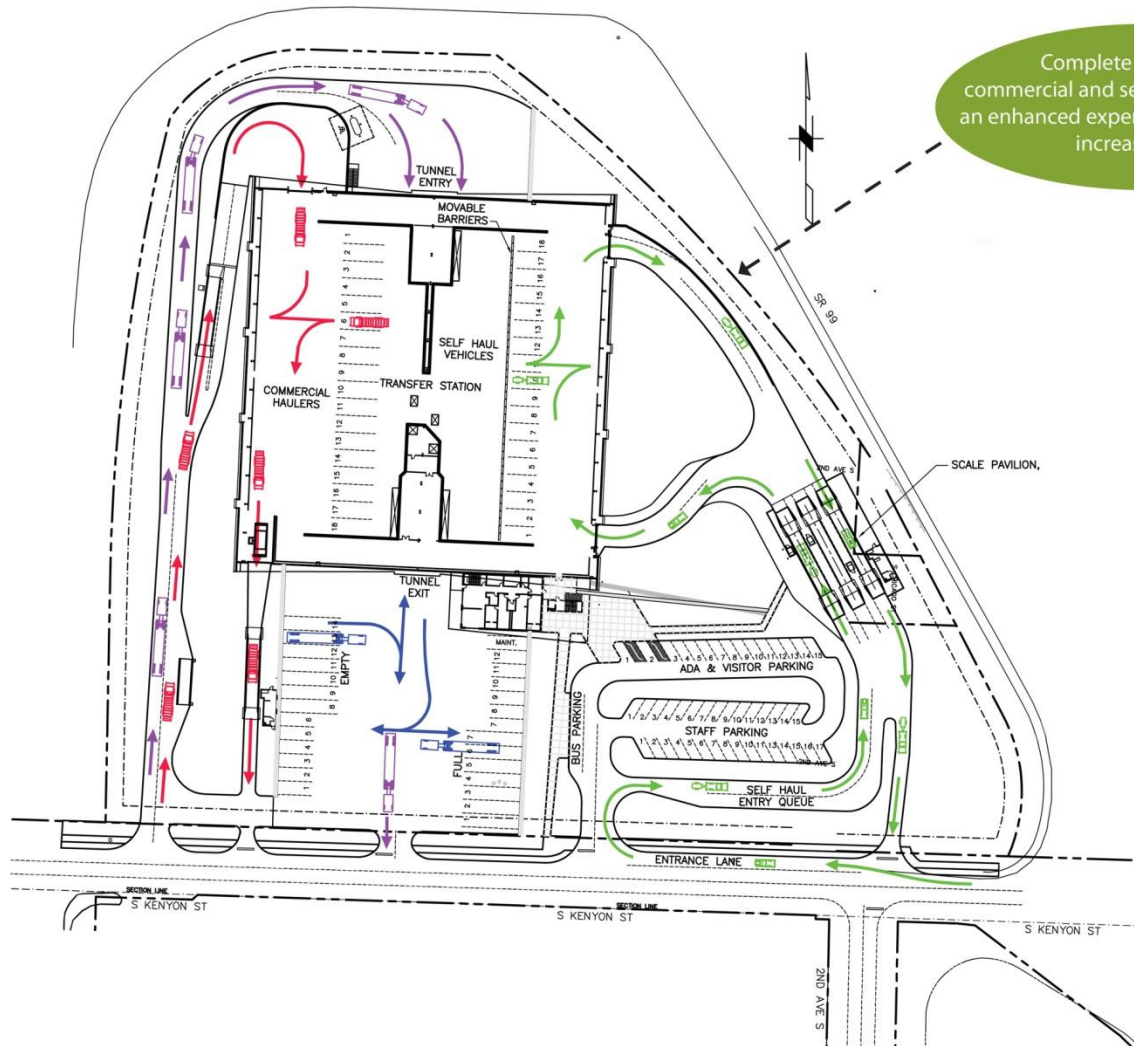
**URS**

City of Seattle  
Seattle Public Utilities  
Seattle, Washington

South Transfer Station - Bus Yard Site  
GENERAL ARRANGEMENT PLAN  
ALTERNATE 3

DRAWING NUMBER:
CAD FILE NUMBER:
SHEET: OF
REV. A

NO.	DATE	BY	REVISION
1	01/13/09	PCF	FOR REVIEW



Complete separation of commercial and self-haul traffic leads to an enhanced experience for all users and increased safety.

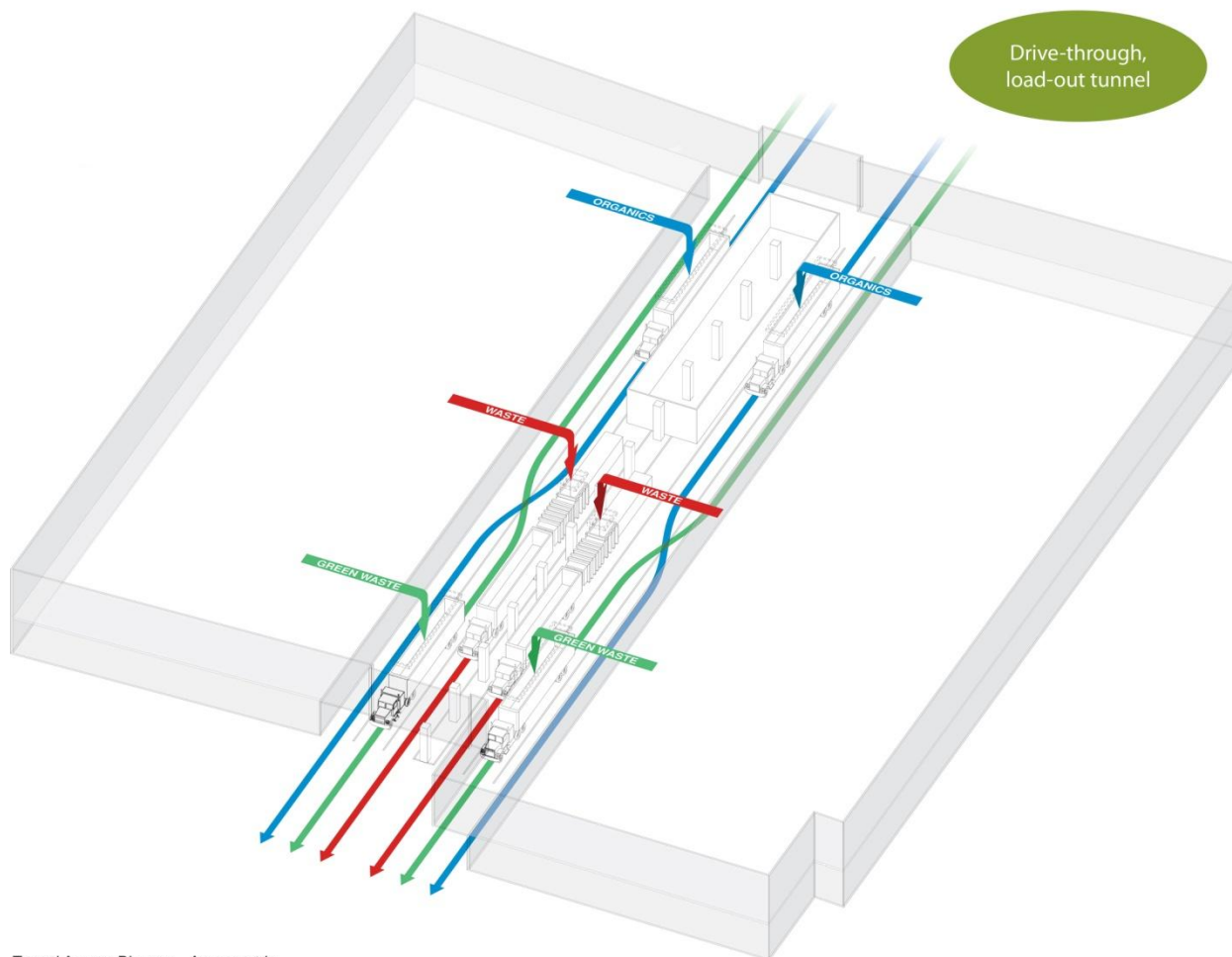
#### LEGEND

- SELF HAUL VEHICLES
- COMMERCIAL VEHICLES
- TOP LOAD TRAILERS
- CONTAINERS

Configuration allows drivers to back up "over the left shoulder" for better visibility and increased safety.

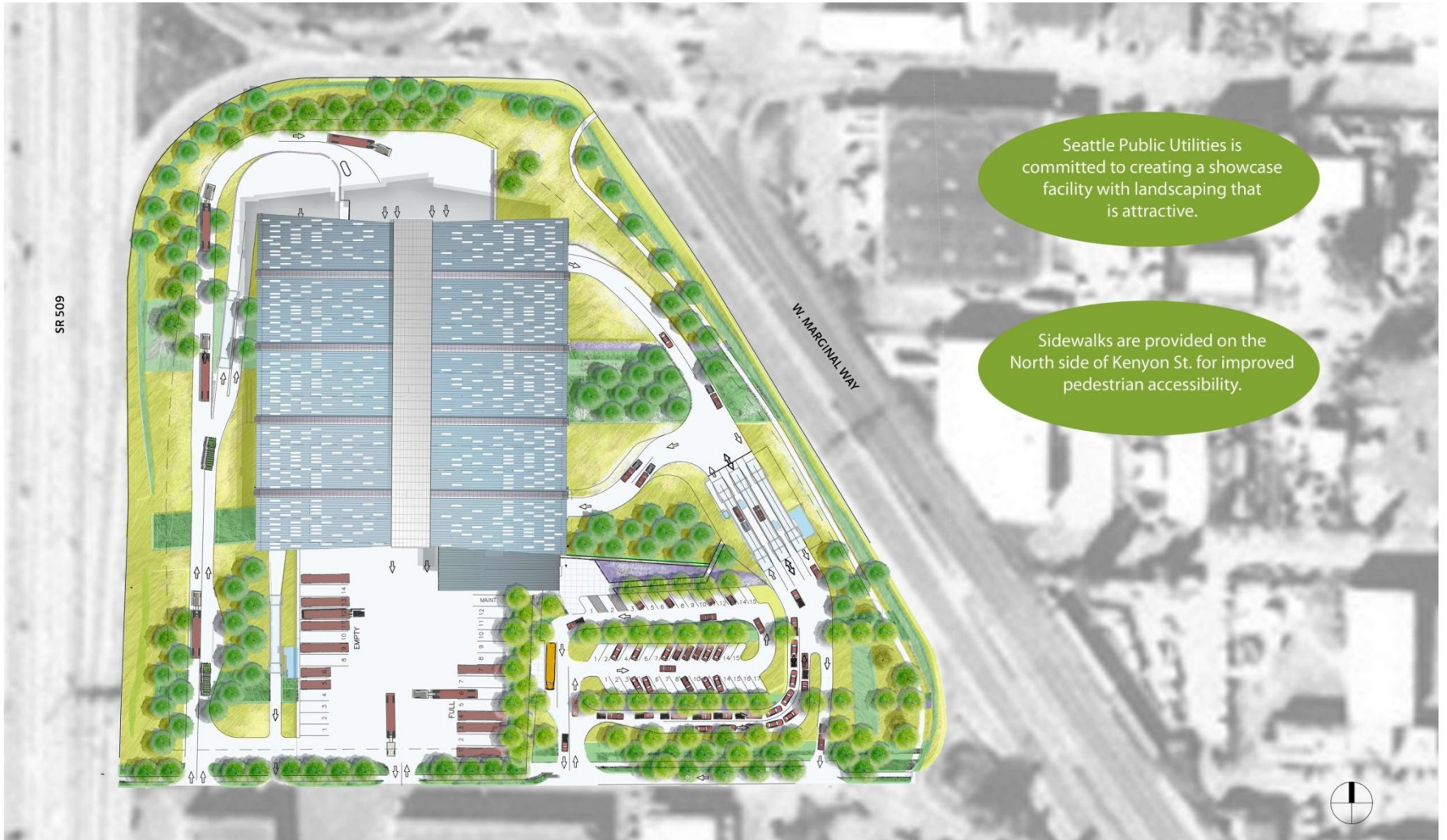
Queue lanes on the property avoid potential back-ups on the public streets.

Reduced wait times through:  
 -more scale lanes  
 -automated weighing & payment  
 -better traffic flow  
 -significant increase in number of dumping stalls



Tunnel Access Diagram - Axonometric





Seattle Public Utilities is committed to creating a showcase facility with landscaping that is attractive.

Sidewalks are provided on the North side of Kenyon St. for improved pedestrian accessibility.



## Deciduous Trees



Red Maple • *Acer rubrum*



Acer Sugar Maple • *Acer saccharum*



London Plane Tree • *Platanus x acerifolia*

Swamp White Oak • *Quercus bicolor*



Scarlet Oak • *Quercus coccinea*



Red Oak • *Quercus rubrum*

## Evergreen Trees



Giant Redwood • *Sequoiadendron giganteum*

## Groundcovers



Blue Wild Rye • *Elymus glauca*



Epimedium • *Epimedium rubrum*



Western Sword Fern • *Polystichum munitum*



Hydroseeding with mixed grass and forbs species



## Shrubs



Dwarf Burning Bush • *Euonymus alata 'Compacta'*



English Lavender • *Lavandula angustifolia*



Rugosa Rose • *Rosa rugosa*



Blue Arctic Willow • *Salix purpurea 'Nana' Dwarf*

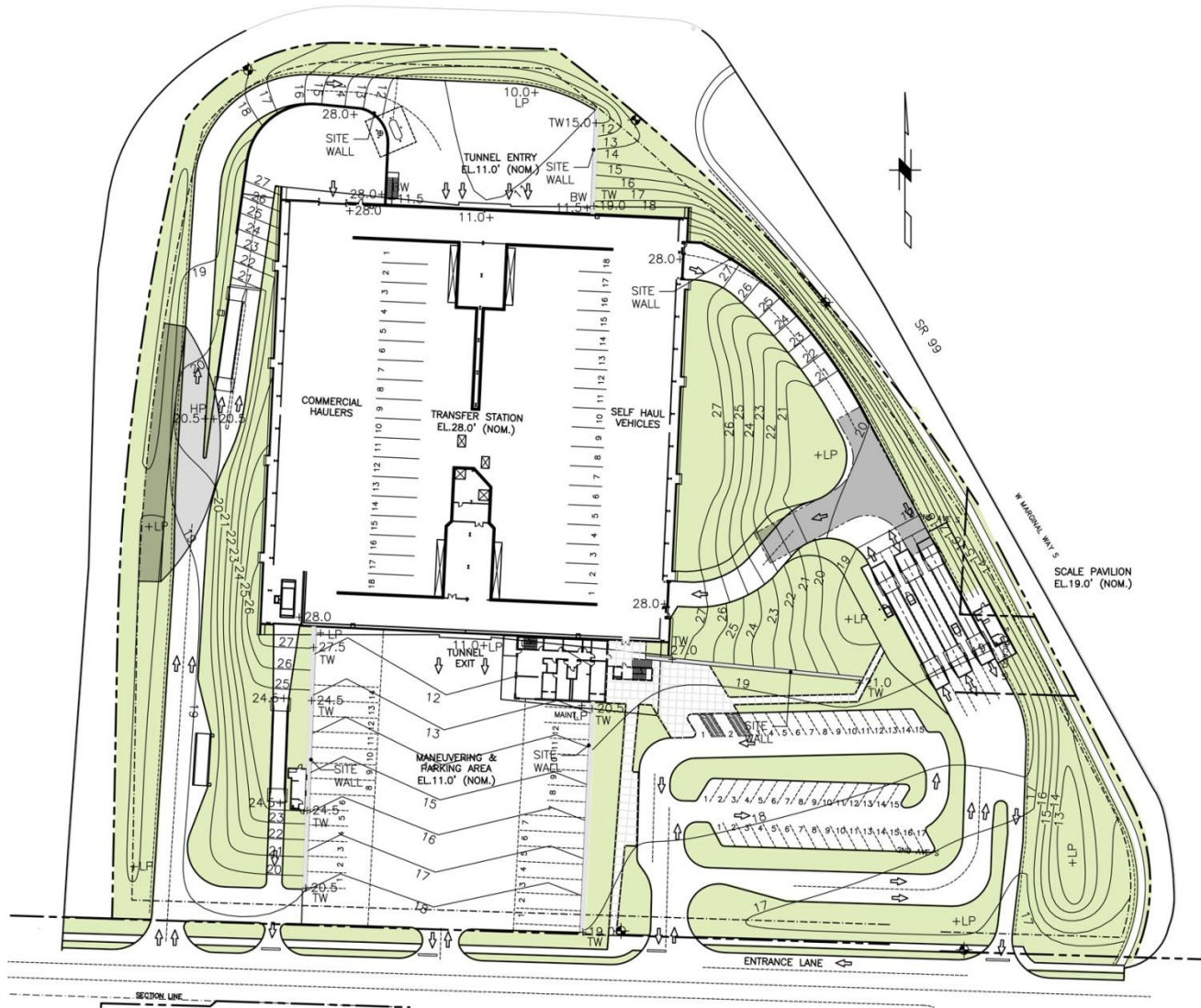


Yew • *Taxus media 'Densiflora'*









**SOUTH TRANSFER STATION**  
DESIGN COMMISSION

TEAM MORTENSON / URS

City of Seattle  
Seattle Public Utilities  
Seattle, Washington

**South Recycling and Disposal Station**

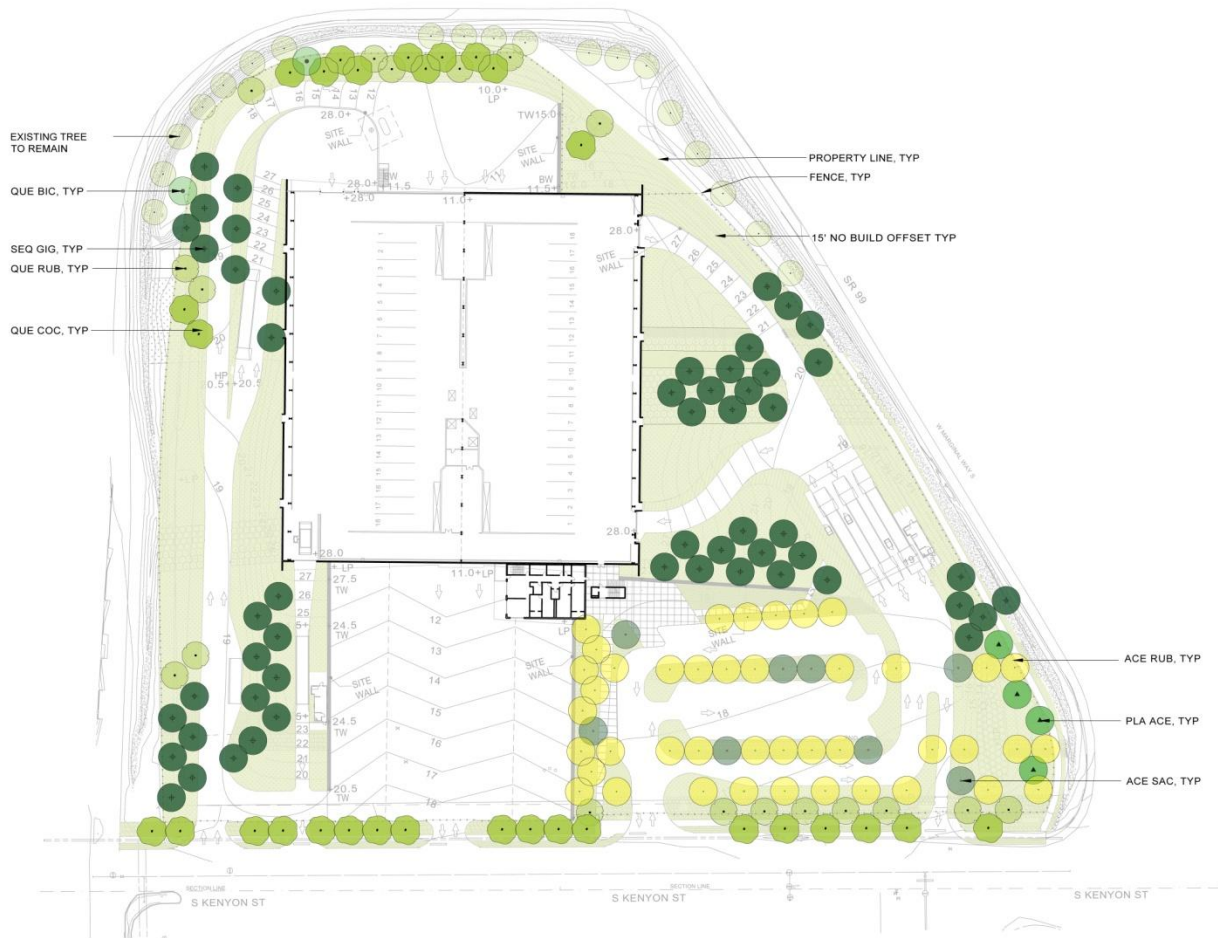
Grading Plan



Scale

17 August 2009

Sheet C104



#### NOTES:

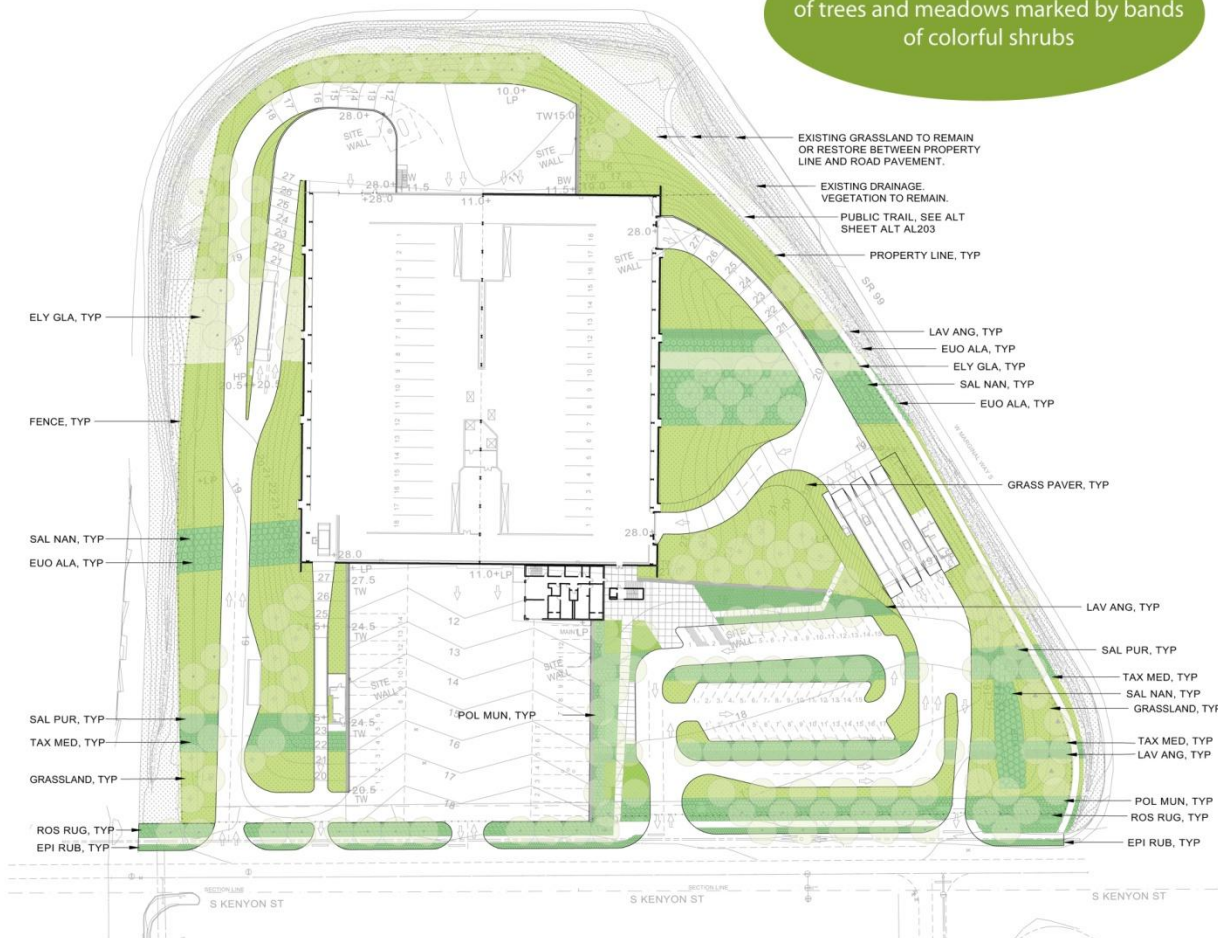
1. See L202 for the Site Shrub/Groundcover Plan and Schedule.
2. See L203 for Site Entry and Notes.
3. See L205 for Planting Details.
4. Planting and soil preparation outside property line to additive alternate.
5. For alternates, see sheet ALT L202.

#### PLANT SCHEDULE

ABBREV.	NAME	CONDITION
<b>EVERGREEN TREES</b>		
SEQ GIG	Sequoiadendron giganteum Giant Redwood	25% 6-8" height 50% 8-10" height 25% 10-12" height
<b>DECIDUOUS TREES</b>		
ACE RUB	Acer rubrum Red Maple	25% 2 1/2"-3" cal 75% 2 1/2"-3" cal
ACE SAC	Acer saccharum Sugar Maple	2 1/2"-3" cal
PLA ACE	Platanus x acerifolia London Plane Tree	1 1/2"-2" cal
QUE BIC	Quercus bicolor Swamp White Oak	1 1/2"-2" cal
QUE COC	Quercus coccinea Scarlet Oak	2 1/2"-3" cal
QUE RUB	Quercus rubrum Red Oak	1 1/2"-2" cal



The landscape will have groves of trees and meadows marked by bands of colorful shrubs



- NOTES:
1. See L201 for the Site Tree Plan and Schedule.
  2. See L203 for Site Entry and Notes.
  3. See L205 for Landscape Details.
  4. Planting and soil preparation outside property line to additive alternate
  5. For alternates, see sheet ALT L202.

#### PLANT SCHEDULE

ABBREV.	NAME	CONDITION
<b>SHRUBS</b>		
EUO ALA	Euonymus alata 'Compacta' Dwarf Burning Bush	2 Gal, 6' OC
LAV ANG	Lavandula angustifolia English Lavender	1 Gal, 3' OC
ROS RUG	Rosa rugosa Rugosa Rose	2 Gal, 4' OC
SAL PUR	Salix purpurea 'Canyon Blue' Canyon Blue Arctic Willow	2 Gal, 4' OC
SAL NAN	Salix purpurea 'Nana' Dwarf Blue Arctic Willow	2 Gal, 6' OC
TAX MED	Taxus media 'Densiformis' Yew	2 Gal, 4' OC

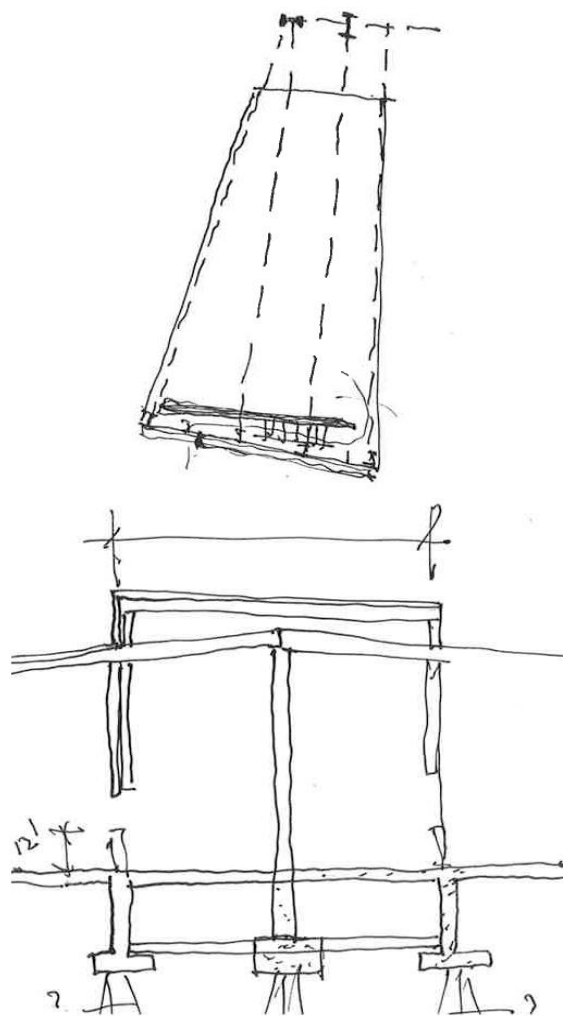
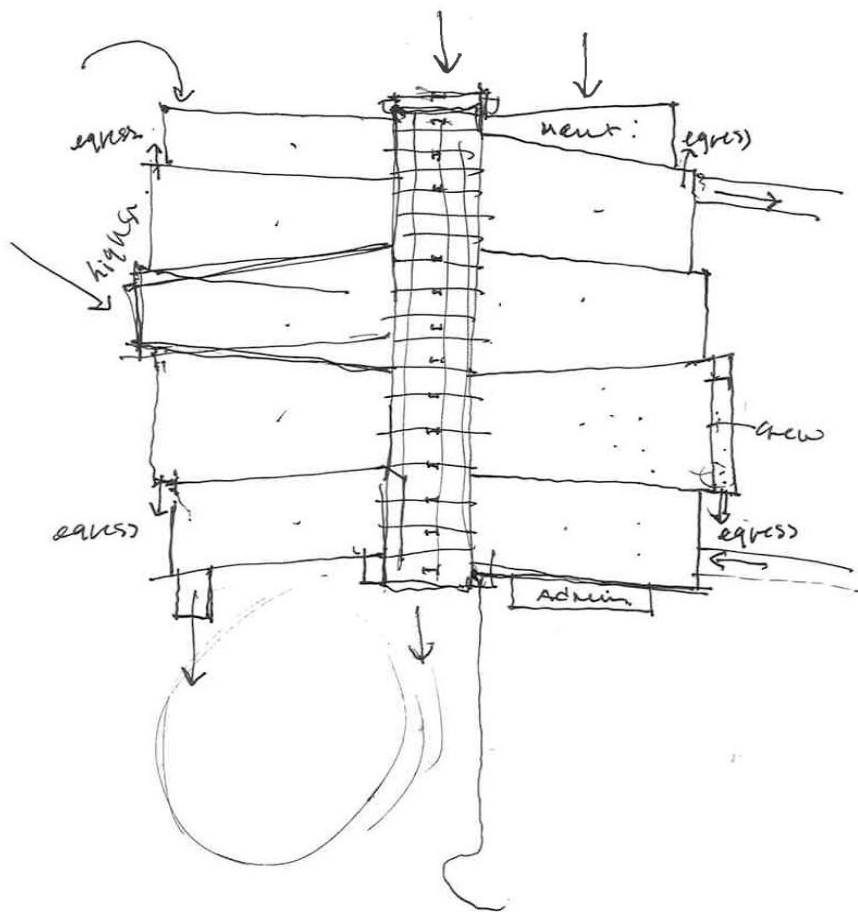
#### GROUNDCOVERS

ELY GLA	Elymus glauca Blue Wild Rye	4" pots, 1' OC
EPI RUB	Epimedium rubrum Epimedium	4" pots, 2' OC
POL MUN	Polystichum munitum Western Sword Fern	1 Gal, 3' OC

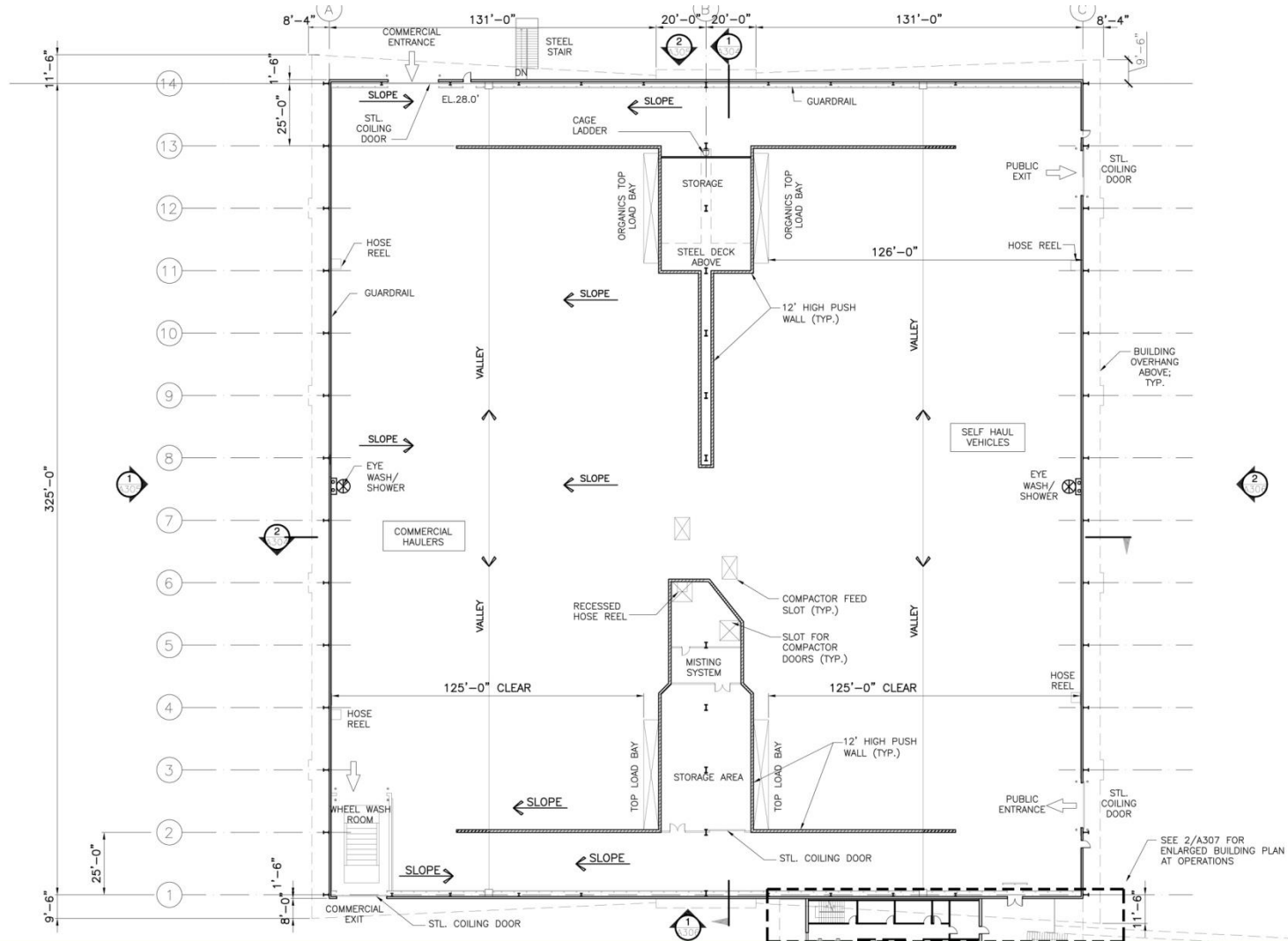
#### GRASSLAND

Hydroseeding with mixed grass and forbs species

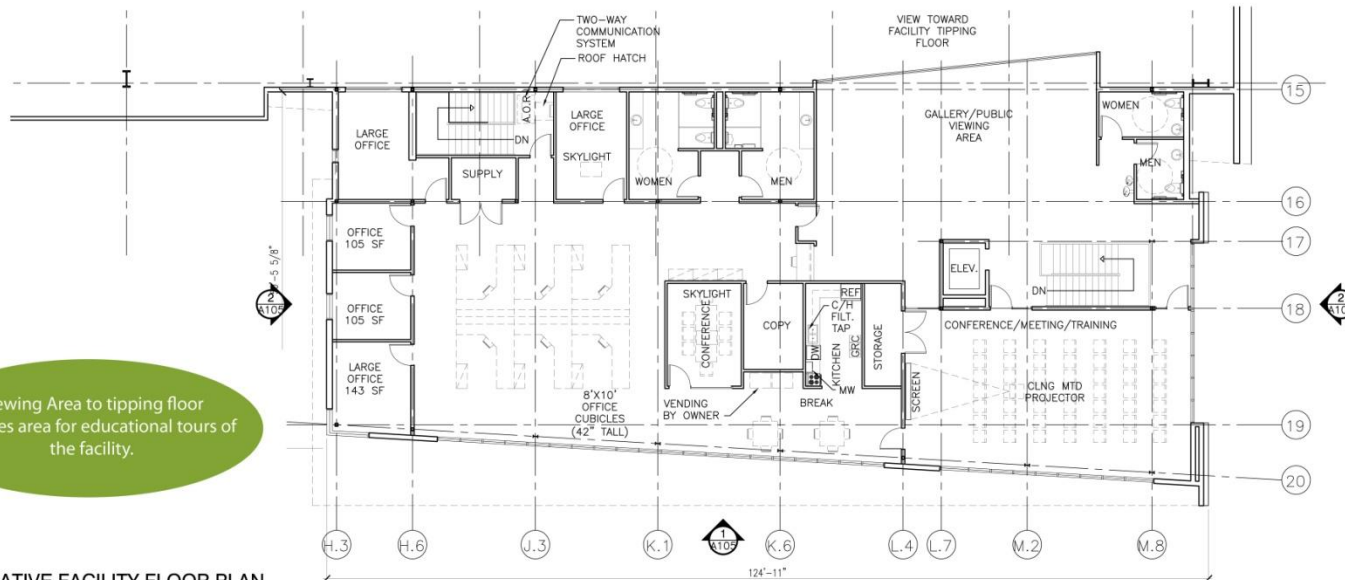
The site design contains significantly more vegetated area than currently on site; 35% of the site area will be vegetated. All vegetated areas are designed with native or adapted plant species, such as drought tolerant shrubs, ground covers, ornamental grasses and hedges, and native short grass meadow areas







NOTE:  
FUTURE CONSTRUCTION  
DOCUMENT SUBMITTALS TO HAVE  
LOWEST ELEVATION OF THE  
TUNNEL FLOOR NO LOWER THAN  
14'-0". THE SCALE PITS MAY  
EXTEND BELOW THE TUNNEL  
FLOOR IF THEY ARE OF  
WATERPROOF DESIGN TO  
PREVENT GROUNDWATER FROM  
SEEPING INTO THE SCALE PITS.



Viewing Area to tipping floor provides area for educational tours of the facility.

ADMINISTRATIVE FACILITY FLOOR PLAN

1  
A308



VIEW TOWARDS TIPPING FLOOR FROM PUBLIC VIEWING AREA

2  
A308





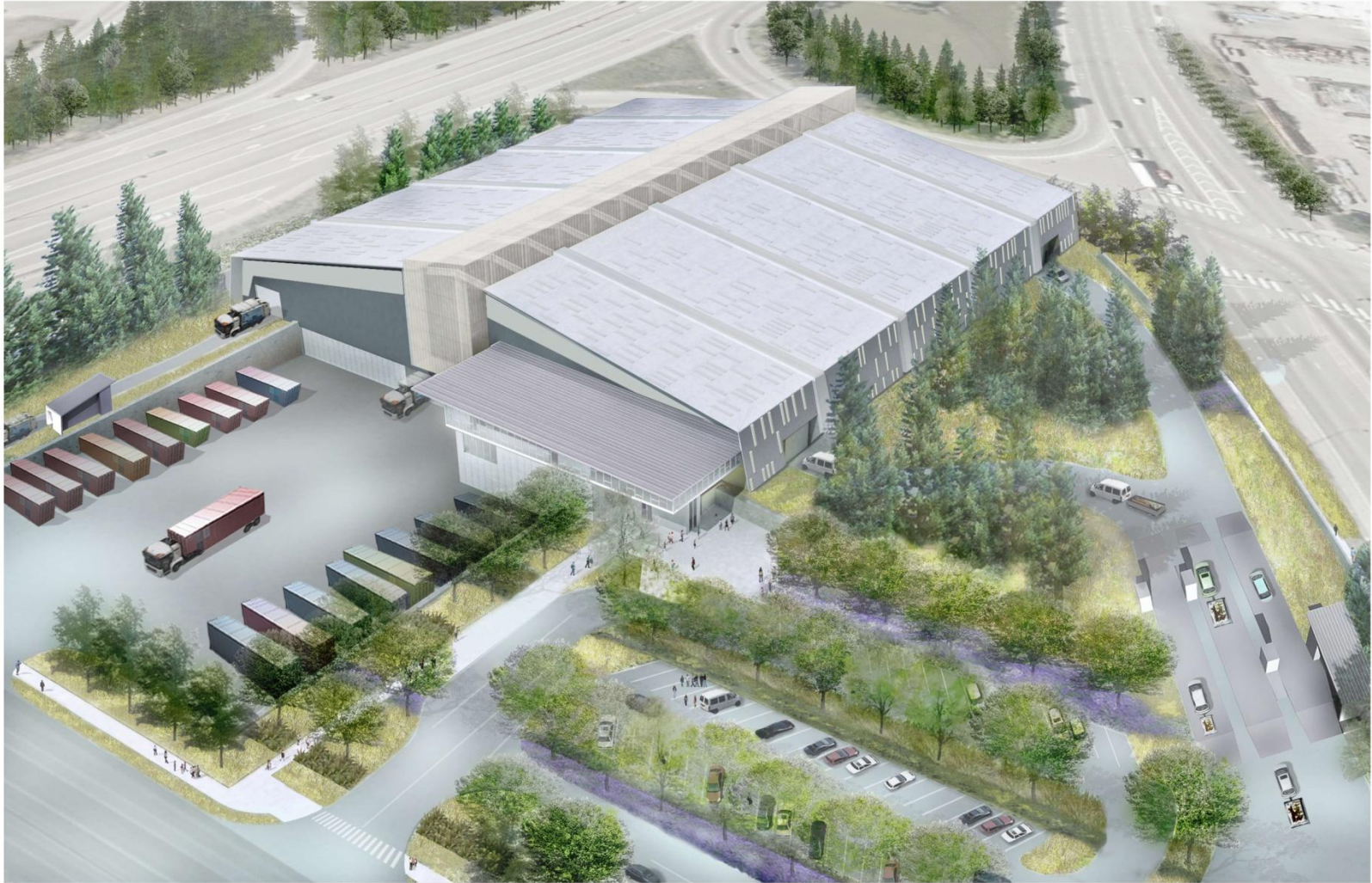
WEST ELEVATION (Standing on West side of building looking East)



EAST ELEVATION (Standing on East side of building looking West)



SOUTH ELEVATION (Standing on South side of building looking North)



**SOUTH TRANSFER STATION REBUILD**  
PUBLIC OPEN HOUSE

*TEAM MORTENSON | URS*

City of Seattle  
Seattle Public Utilities  
Seattle, Washington

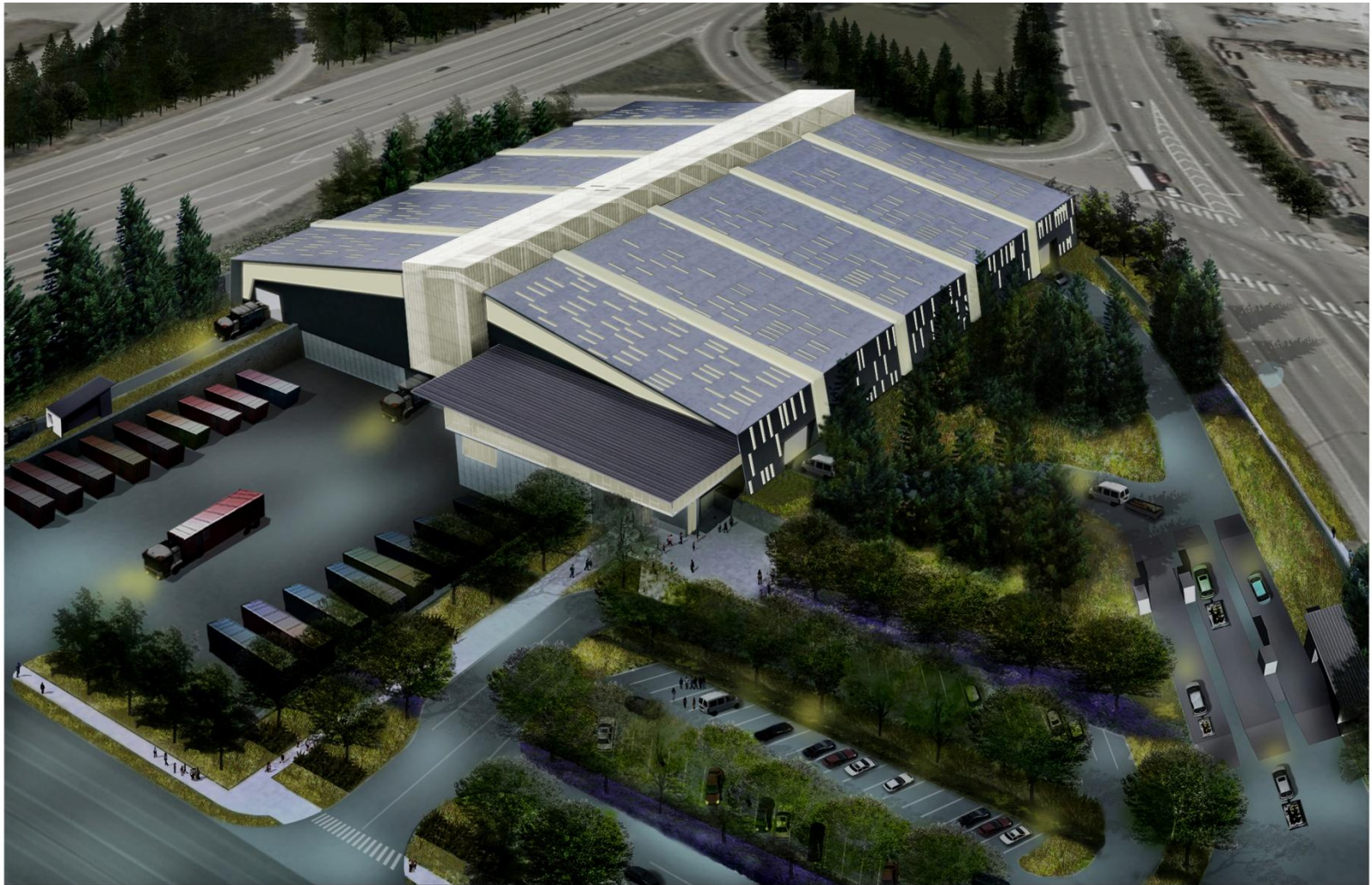
Overall Aerial Rendering from Southeast

Not to Scale

31 March 2010

Sheet **G011**





**SOUTH TRANSFER STATION REBUILD**  
PUBLIC OPEN HOUSE

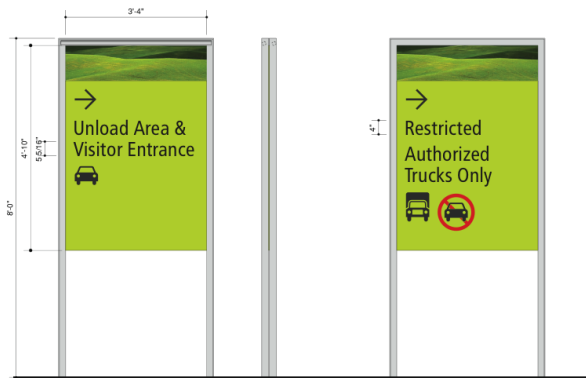
*TEAM MORTENSON | URS*

City of Seattle  
Seattle Public Utilities  
Seattle, Washington

Overall Night Aerial Rendering from Southeast

Not to Scale

31 March 2010  
Sheet **G011b**



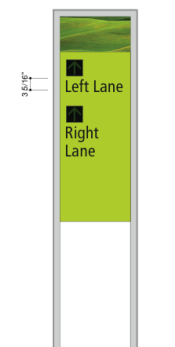
D-1 Primary Vehicular Directional - Elevation



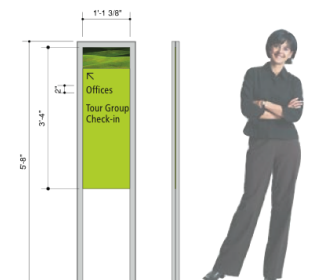
D-2 Secondary Vehicular Directional - Elevation



D-3 Vehicular Directional (small) - Elevation



D-4 Vehicular Lane Directional (electronic) - Elevation



D-5 Pedestrian Directional - Elevation & Side View

## DIRECTIONAL SIGNAGE

**SOUTH TRANSFER STATION**  
DESIGN COMMISSION

TEAM MORTENSON / URS

City of Seattle  
Seattle Public Utilities  
Seattle, Washington

**wpa**  
graphics design & architecture  
911 western avenue suite 200 seattle, washington 98104  
tel: 206.233.0959 fax: 206.233.0663  
www.wpaarchitect.com

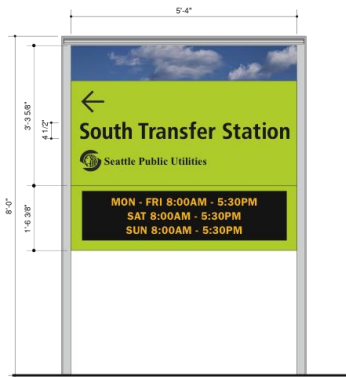
Wayfinding Signage

0 6" 1' 2'  
Scale

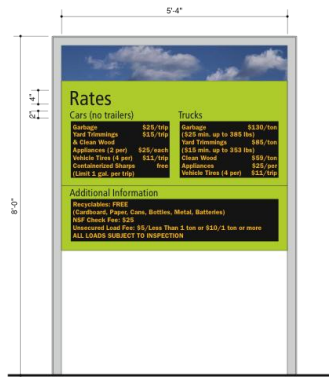
6 May 2010

Sheet **SS702**

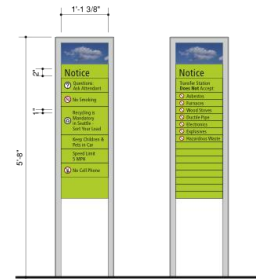




ID-1 Site ID / Informational (electronic) - Elevation



I-1 Vehicular Rate Informational (electronic) - Elevation



I-2 Vehicular Informational - Elevation



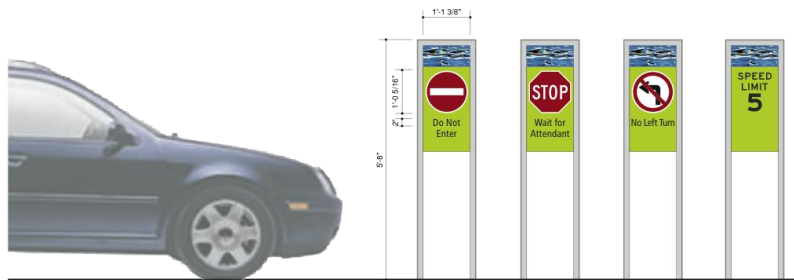
I-3 Veh. Info. (suspended) - Elevation



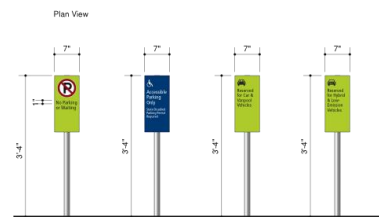
I-4 LEED Certification ID

## IDENTIFICATION

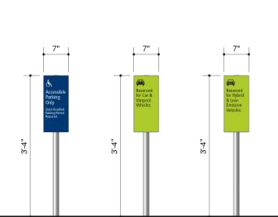
## INFORMATIONAL SIGNAGE



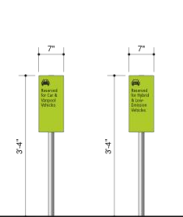
R-1 Vehicular Regulatory - Elevation



R-2 Vehicular Regulatory



R-3 Accessible Parking ID

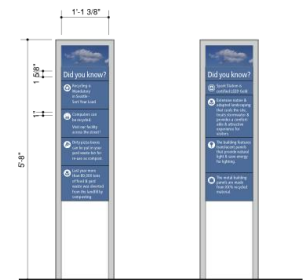


R-4 Carpool Parking ID



R-5 Low-Emission Vehicle Parking ID

## REGULATORY SIGNAGE



E-1 Education Informational - Elevation

## EDUCATIONAL SIGNAGE

**SOUTH TRANSFER STATION**  
DESIGN COMMISSION

TEAM MORTENSON / URS

City of Seattle  
Seattle Public Utilities  
Seattle, Washington



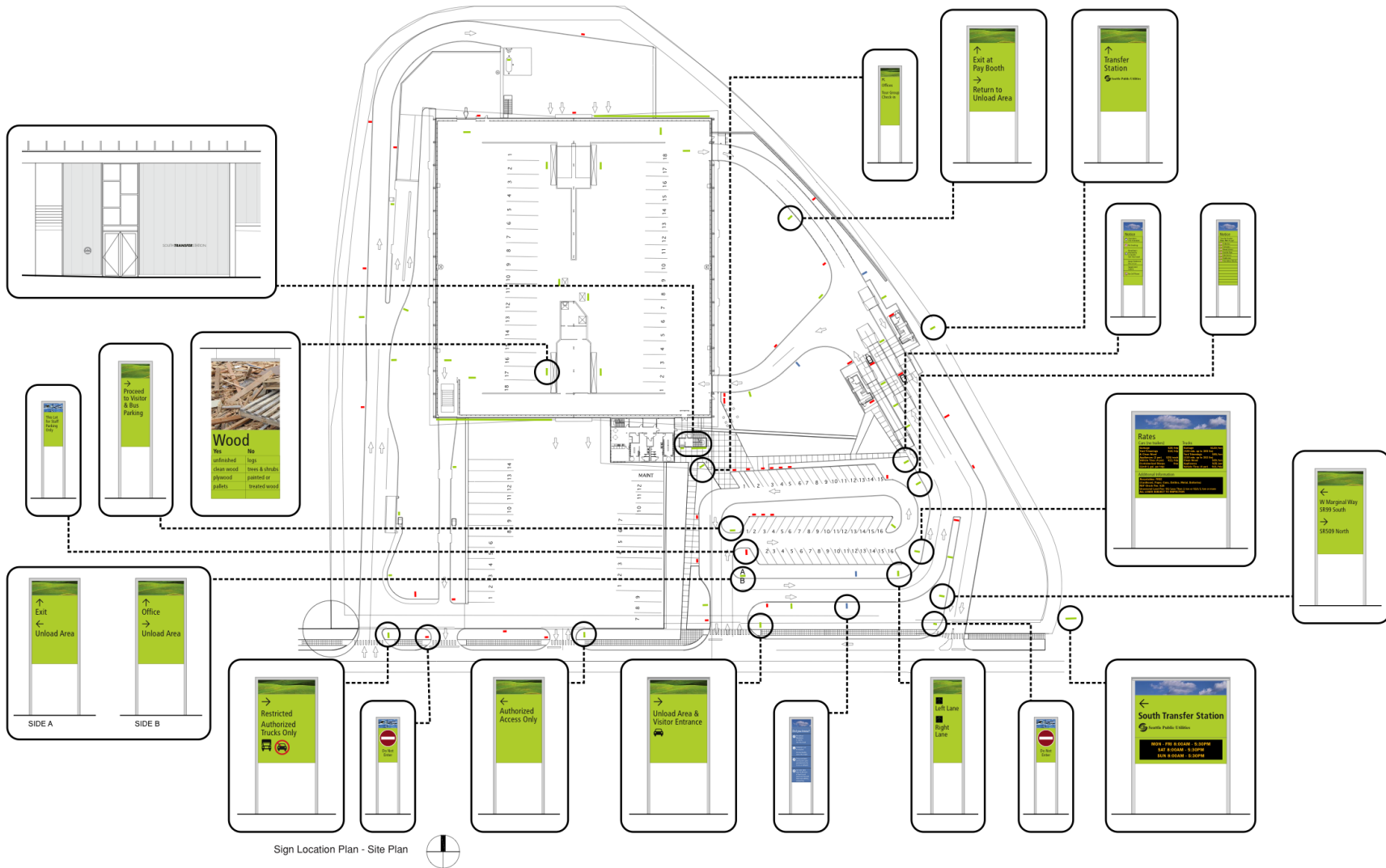
graphics design & architecture  
611 western avenue suite 200 seattle, washington 98104  
tel: 206.233.0505 fax: 206.233.0663  
www.wpaarch.com

Wayfinding Signage

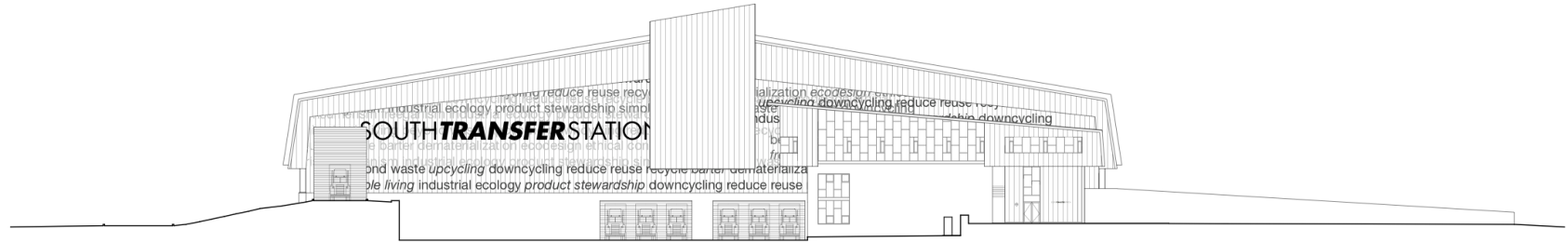
0 6" 1' 2'  
Scale

6 May 2010

Sheet **SS703**







South Elevation - Option A

beyond waste upcycling downcycling reduce reuse recycle simple living dematerialization ecodesign  
 ethical consumerism freeganism industrial ecology industrial metabolism product stewardship barter



North Elevation - Option A

**SOUTH TRANSFER STATION**  
 DESIGN COMMISSION

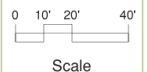
TEAM MORTENSON / URS

City of Seattle  
 Seattle Public Utilities  
 Seattle, Washington



graphics design & architecture  
 911 western avenue suite 200 seattle, washington 98104  
 tel 206.233.0555 fax 206.233.0663  
 www.wpaarchitect.com

Building Graphics



Scale

6 May 2010

Sheet **SS704**