

NE 130th Street Infill Station Station Finishes Package

*Seattle Design Commission
90% Design Review*

December 1, 2022

Agenda

90% Design Review: NE 130th Infill Station

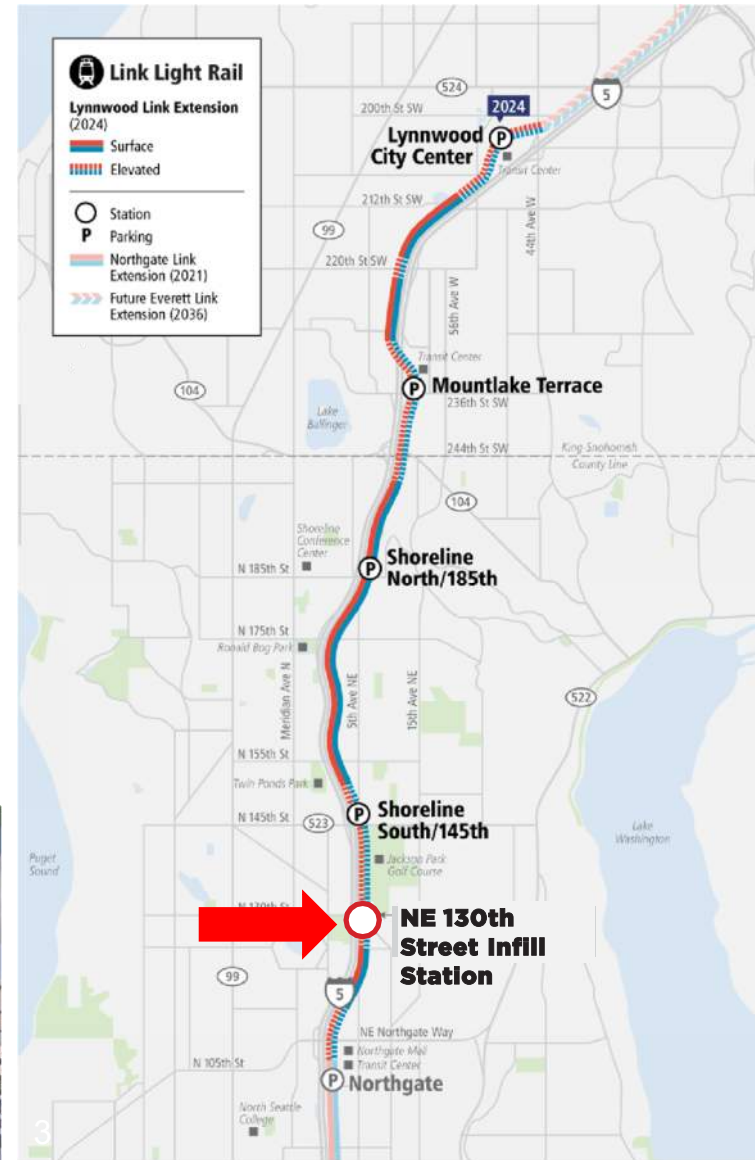
- **Introductions**
- **NE 130th Station Overview**
- **Previous SDC Reviews**
- **Artist Selection Process**
- **Station Design Updates**
- **Station Completion Schedule**
- **Questions and Comments**

NE 130TH STREET STATION OVERVIEW

NE 130th Station Overview

- Located at 5th Ave NE and NE 130th St
- Included in 2016 ST3 Plan as infill station
- Timing in ST3 Plan - start 2024, open 2031
- Current opening scheduled 2026

- Elevated side-platform station
- Estimated 3100-3600 daily boardings



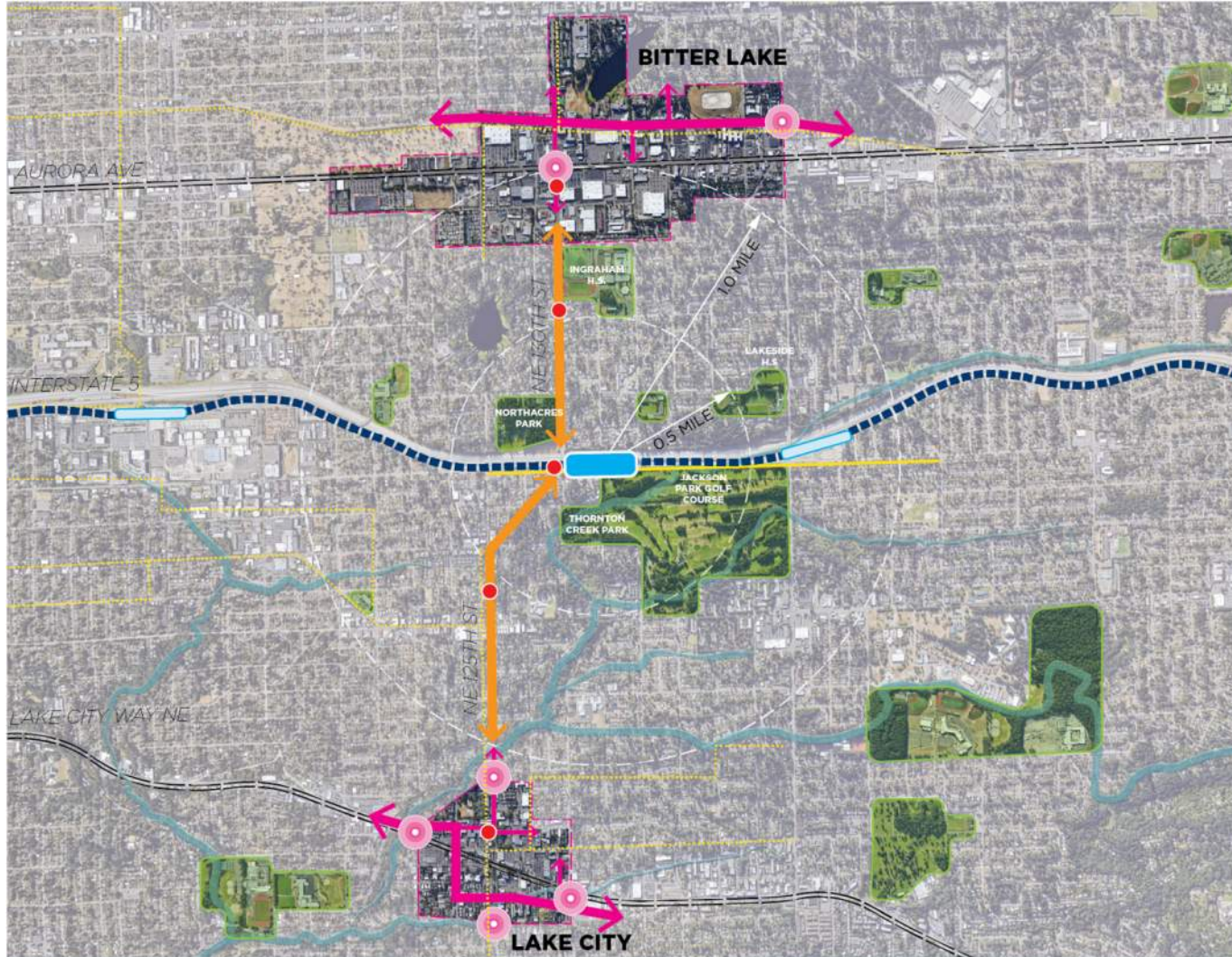
Shoreline South/148th Station



Lynnwood City Center Station

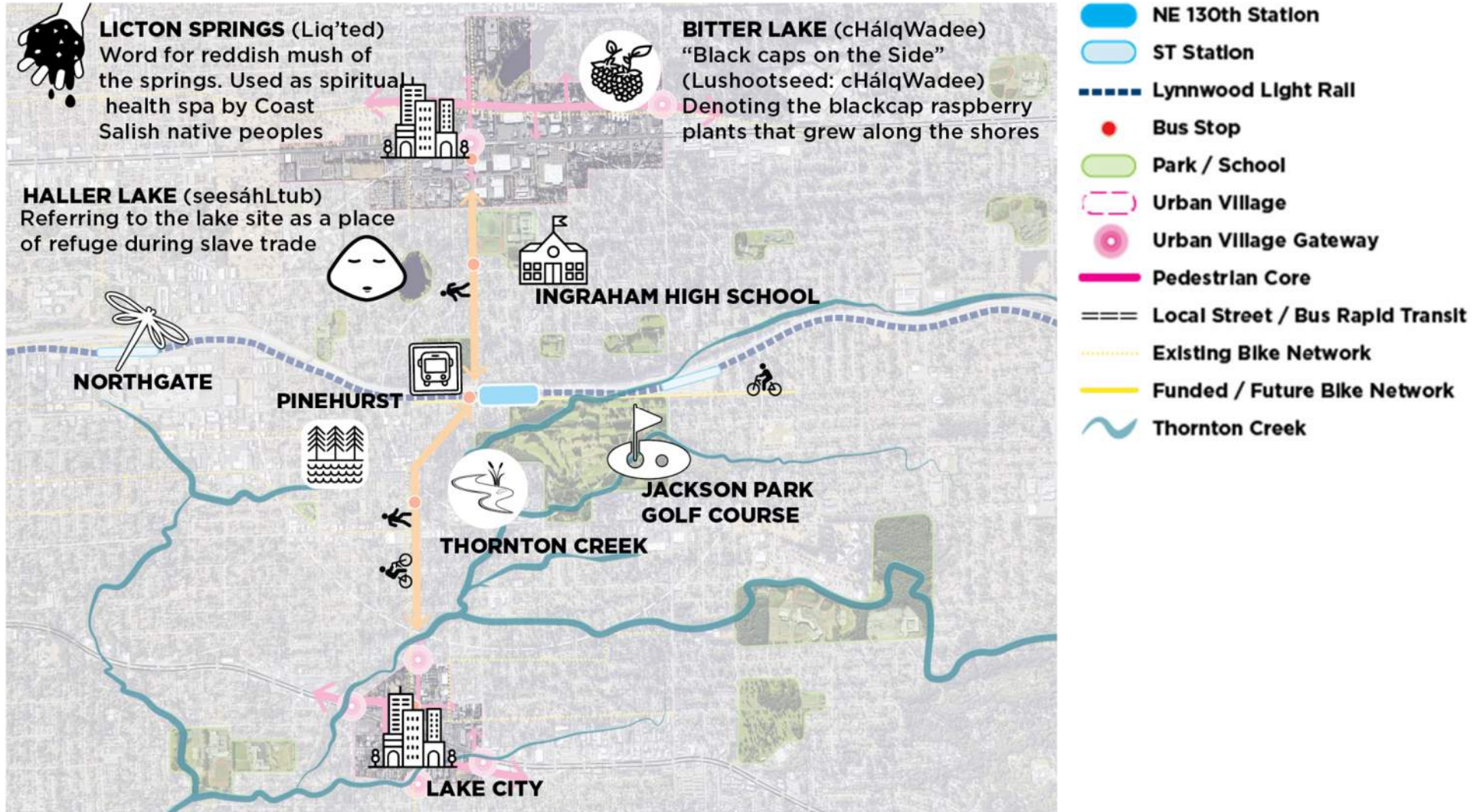


NE 130th Station Overview

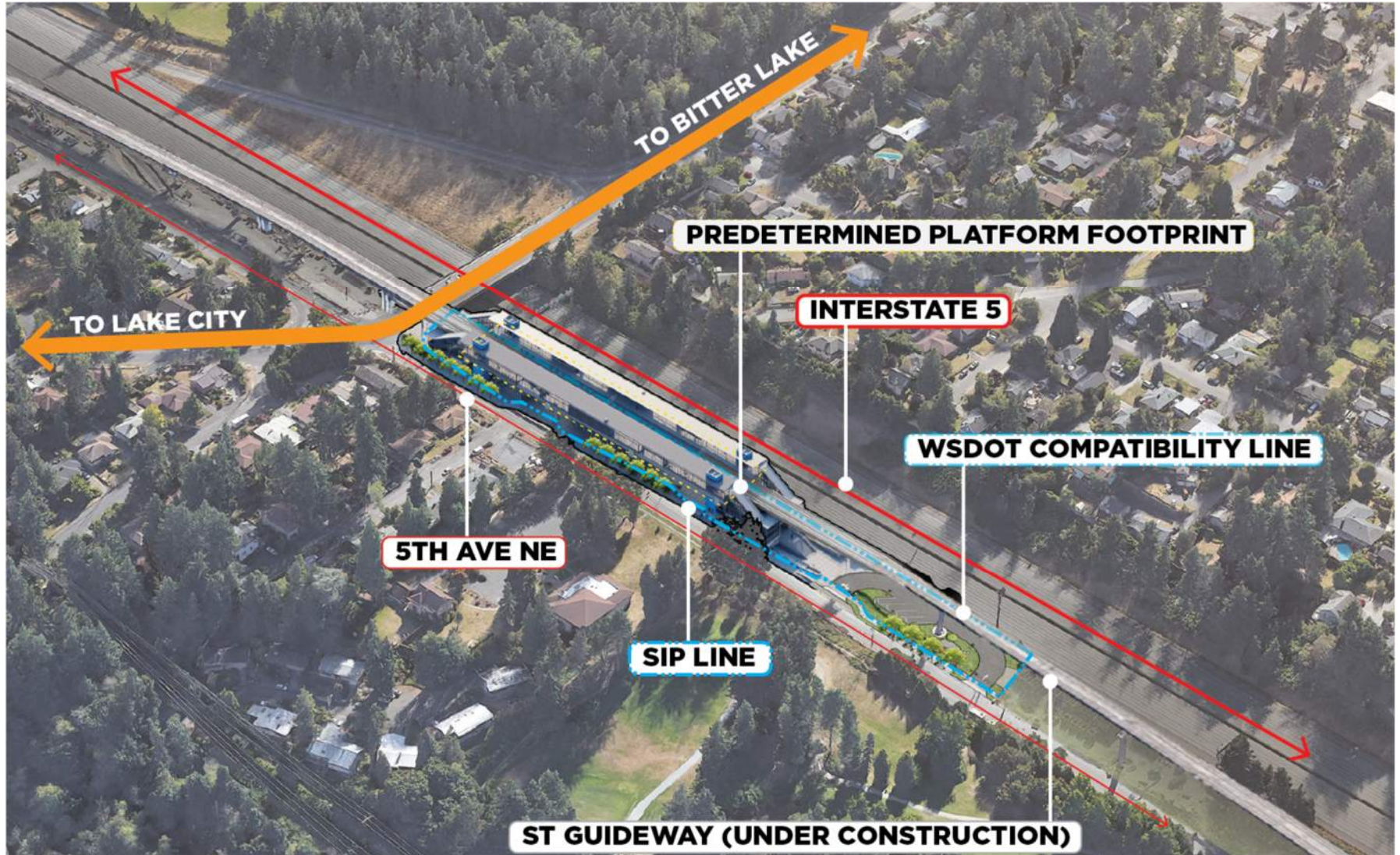


-  NE 130th Station
-  ST Station
-  Lynnwood Light Rail
-  Bus Stop
-  Park / School
-  Urban Village
-  Urban Village Gateway
-  Pedestrian Core
-  Local Street / Bus Rapid Transit
-  Existing Bike Network
-  Funded / Future Bike Network
-  Thornton Creek

NE 130th Station Cultural Context



NE 130th Station Site Context



City of Seattle Planning Context

LAKE CITY *urban design framework*



BITTER LAKE *Urban Design Framework*



City of Seattle Station Area Planning

Neighborhood Vision Statement:

- Lively, walkable and welcoming neighborhood
- Tree-lined sidewalks, and other green infrastructure
- Bicycle infrastructure that is enjoyable and safe
- Broad range of affordable housing options
- Small shops and cafes near the transit station
- Abundant greenspaces and unique cultural events easily reached by walking, biking or transit.

NE 130th Station as a **node** for community assets



Figure 12. Existing Community Assets within 20 minutes of the future NE 130th St Station

NE 130th Station Overview



- Vertical Circulation
- Ancillary Space
- Information & Ticketing
- Guideway Overhead
- Existing Curb
- Proposed Bus Stop

- Raised bike path
- Signage, information kiosk, and wayfinding path
- Art locations near stairs
- I-5 Planting
- East ancillary wall with art
- Protected bike lanes
- Mid-block crossing
- New crossing at intersection with Jackson Park Trail
- North plaza ADA access
- North stairs from Drop-Off Area
- Stormwater management planting

Landscape Design Concept

- Station identity supported by the landscape concept
- Stormwater elements, planting design, and the use of boulders express Thornton Creek as the design inspiration and source of neighborhood pride



Context



Thornton Creek



Creek Inspiration: Creek cobbles, creek form

Station Concept: Thornton Creek // Revealing flows of water

This concept is expressed by:

1. Revealing the **movement of water** through stormwater elements
2. Using landscape boulders to simulate **creek cobbles** and provide a naturalistic feel at the human scale
3. Using the form of plantings to mimic the **form of streams**

Design Concept

Northgate



Shoreline South

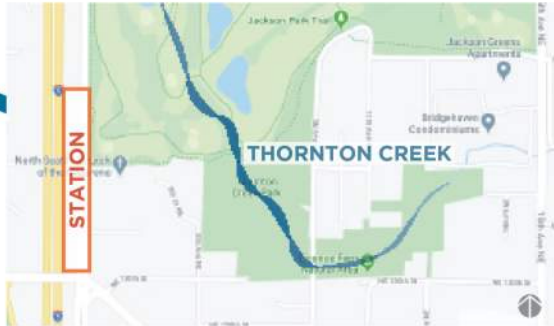
Shoreline North

Mountlake Terrace

Lynnwood

Regional Concept: Overall Light Rail Corridor - Lynnwood Link Extension

NE 130th Infill Station is one of many stations within a regional light rail system. Continuity is maintained between all the stations and corridor through the use of matching plant mixes and site elements such as paving pattern and site furnishings.



Context



Thornton Creek



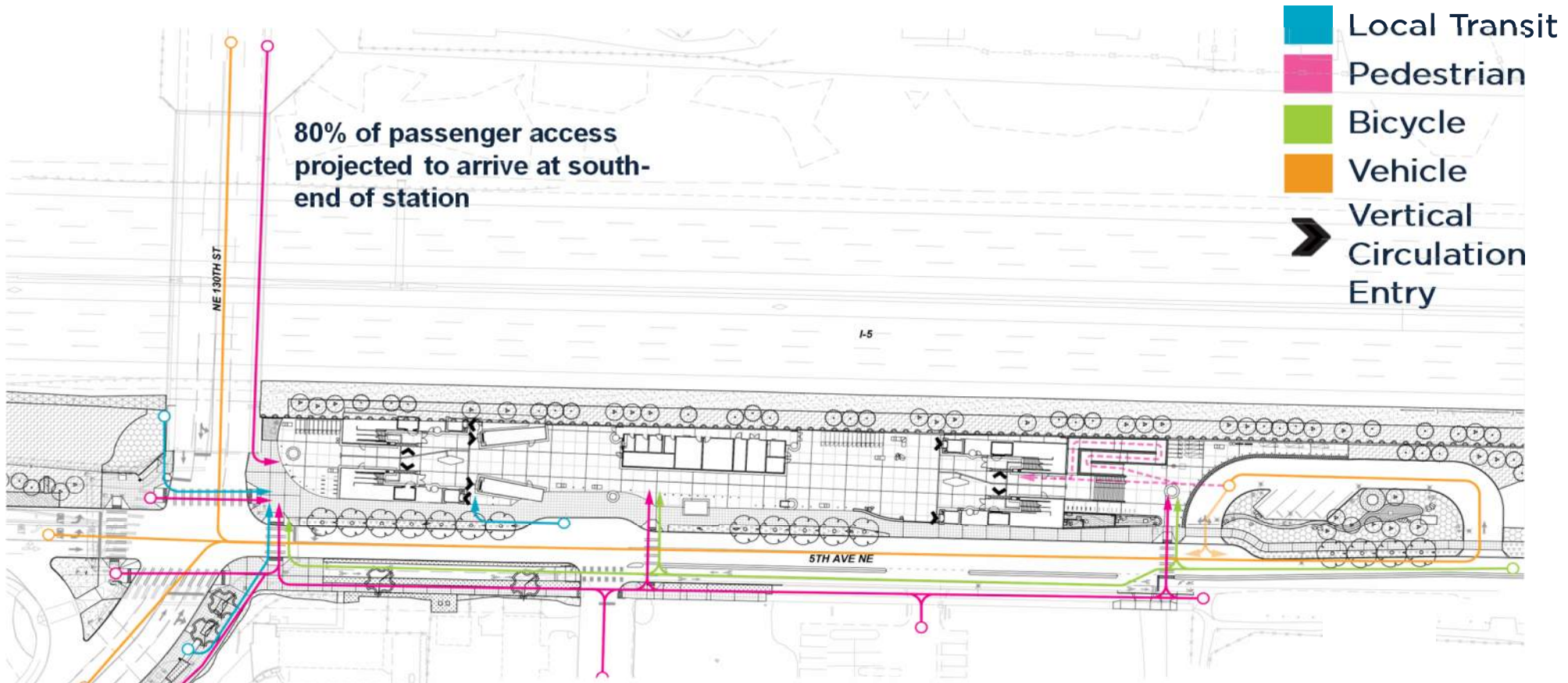
Creek Inspiration: Creek cobbles, creek form

Station Concept: Thornton Creek // Revealing flows of water

This concept is expressed by:

1. Revealing the **movement of water** through stormwater elements
2. Using landscape boulders to simulate **creek cobbles** and provide a naturalistic feel at the human scale
3. Using the form of plantings to mimic the **form of streams**

NE 130th Station Access



(PM Peak Period 3.5-hour volumes)

Direction	Total Boardings	Total Alighting	Walk Egress	Bus Egress	Auto Egress
Northbound	250	1160	640	450	70
Southbound	800	110	60	40	10



Station Access Allowance

ST Funding to support nonmotorized access to the station

- Station access allowances included in ST3 capital project budgets
 - *\$4.9M (YOE\$) for NE 130th Infill Station*
- Preference for 3rd party delivery of access improvements as they will be outside Sound Transit right of way
- Collaborating with City of Seattle on potential improvements focused on NE 130th / Roosevelt / NE 125th corridor
- Funding for projects are subject to ST Board approval

Partner Collaboration

Pre-Engineering, 2019

- 3 Design workshops
- 3 Traffic Analysis workshops
- 2 Value engineering sessions

Final Design, 2020-22

- Biweekly IDT meetings
 - Permit Submittals: 30%, 60%, 90%
 - SIP and Building Permits
-
- ✓ Station Design
 - ✓ Access Improvements
 - ✓ ROW Improvements
 - ✓ Traffic Analysis



NE 130th Station Sound Transit Outreach

- Workshops in 2020 solicited feedback on the station design that have informed the design response to date
- Main takeaways:
 - Desire for a modern design
 - Community pride in Thornton Creek
 - Incorporation of natural elements such as boulders
 - Unique identity of this neighborhood as an urban oasis
- Future outreach is planned by the artist
- Community Engagement will have two phases of outreach:
Phase 1: Online open house featuring station design and artwork
- Phase 2: Online open house featuring station design, artwork, and construction schedule.
- Drop-in sessions in local neighborhood will also take place during phase 2.

PREVIOUS SEATTLE DESIGN COMMISSION REVIEWS

Seattle Design Commission Reviews

The project was last reviewed by the full SDC on 2/3/22, with two conditions:

- Focus on **artist selection** and **art integration**
- Develop **architectural identity**

Other recommendations included:

- Design response to **community input**
- Advance **accessible** and **multimodal** design
- Enhance **experience** of public spaces

Follow-on review by subcommittee on 4/14/22

SDC Subcommittee Recommendations

From the 4/14/22 meeting:

- Explore **reducing opacity of finishes** at ground level at the south and north entries.
- Concentrate on **creating areas of delight** for passengers, through architectural detailing or enhancing visual communication between spaces.
- **Use color strategically** to enhance the horizontal lines of the station.
- Create a cohesive story between **planting and bioretention** areas.
- **Focus on distinctiveness** of the landscape and ground plane.

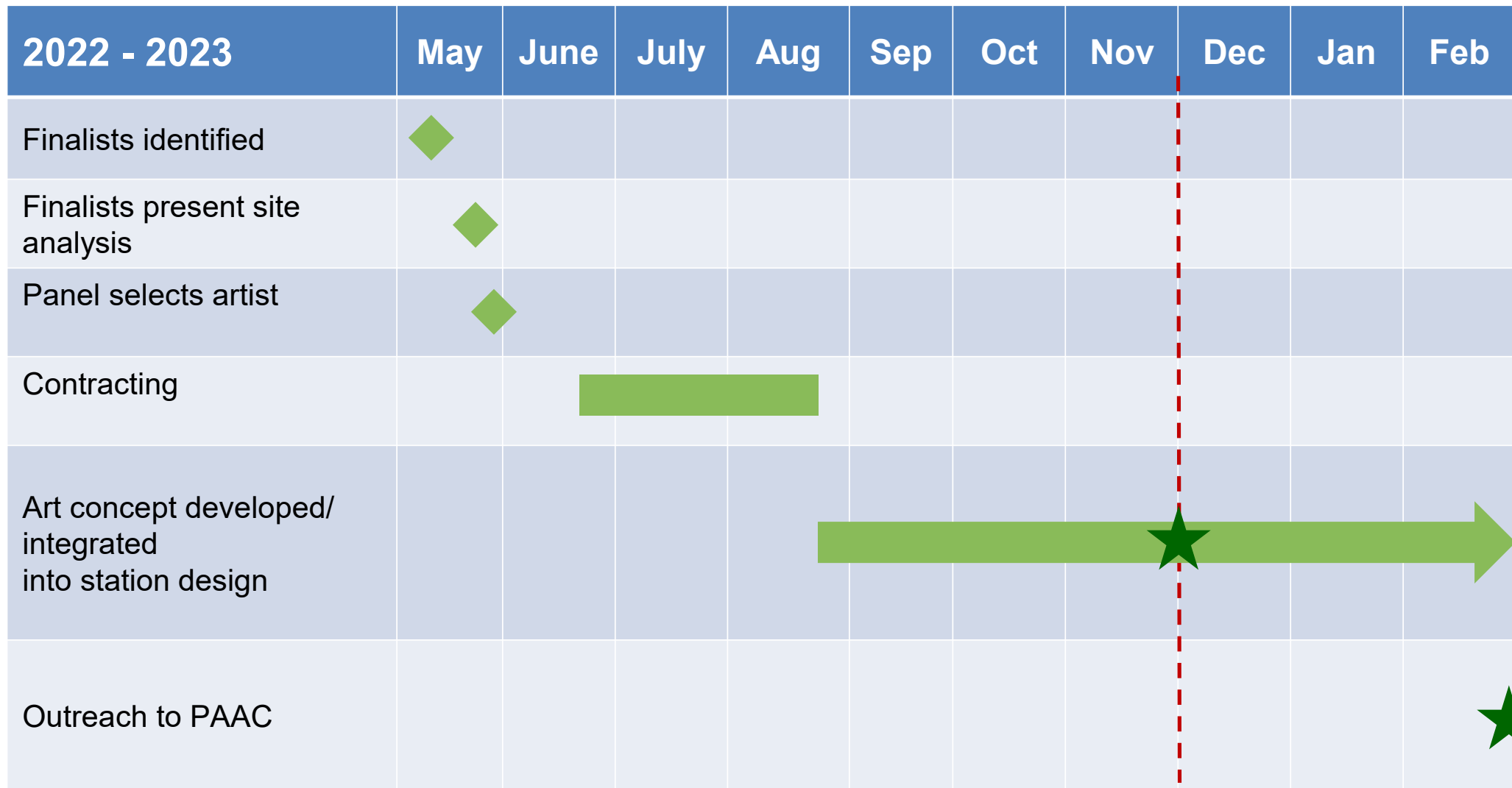
SDC Subcommittee Recommendations

From the 4/14/22 meeting (continued):

- Further develop the **interpretive signage**.
- Employ the art to **enhance the three-dimensional** quality of spaces.
- Ideally select an **artist with building-integration** experience.
- Engage both the Arts Commission and the Public Art Advisory Committee of the Office of Arts and Culture.

ARTIST SELECTION PROCESS

Schedule: Art Development Process



Selected Artist – Romson Bustillo

"Community engagement has a role in my public art process. My art practice has a research and social practice component. I am also an art educator.

I would hold open art making workshops in nearby neighborhoods to be in community, listen, and dialogue."



ACRS, Mien Community

Romson Bustillo – Past Works



Bellevue Art Museum

Romson Bustillo – Studio Practice



Romson Bustillo – Other Projects

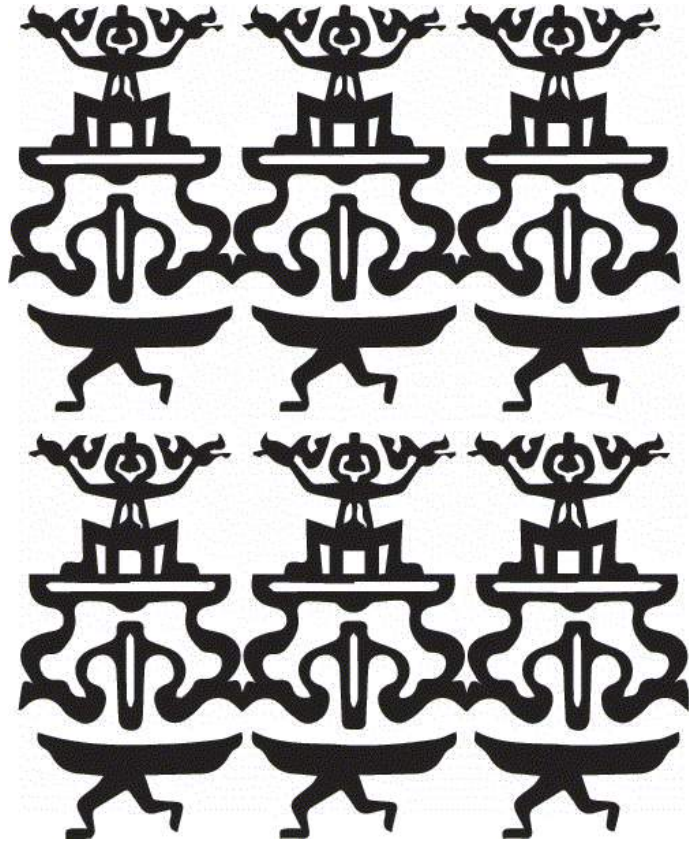


Seattle Convention Center - Howell St.

Inspiration and Preliminary Concept



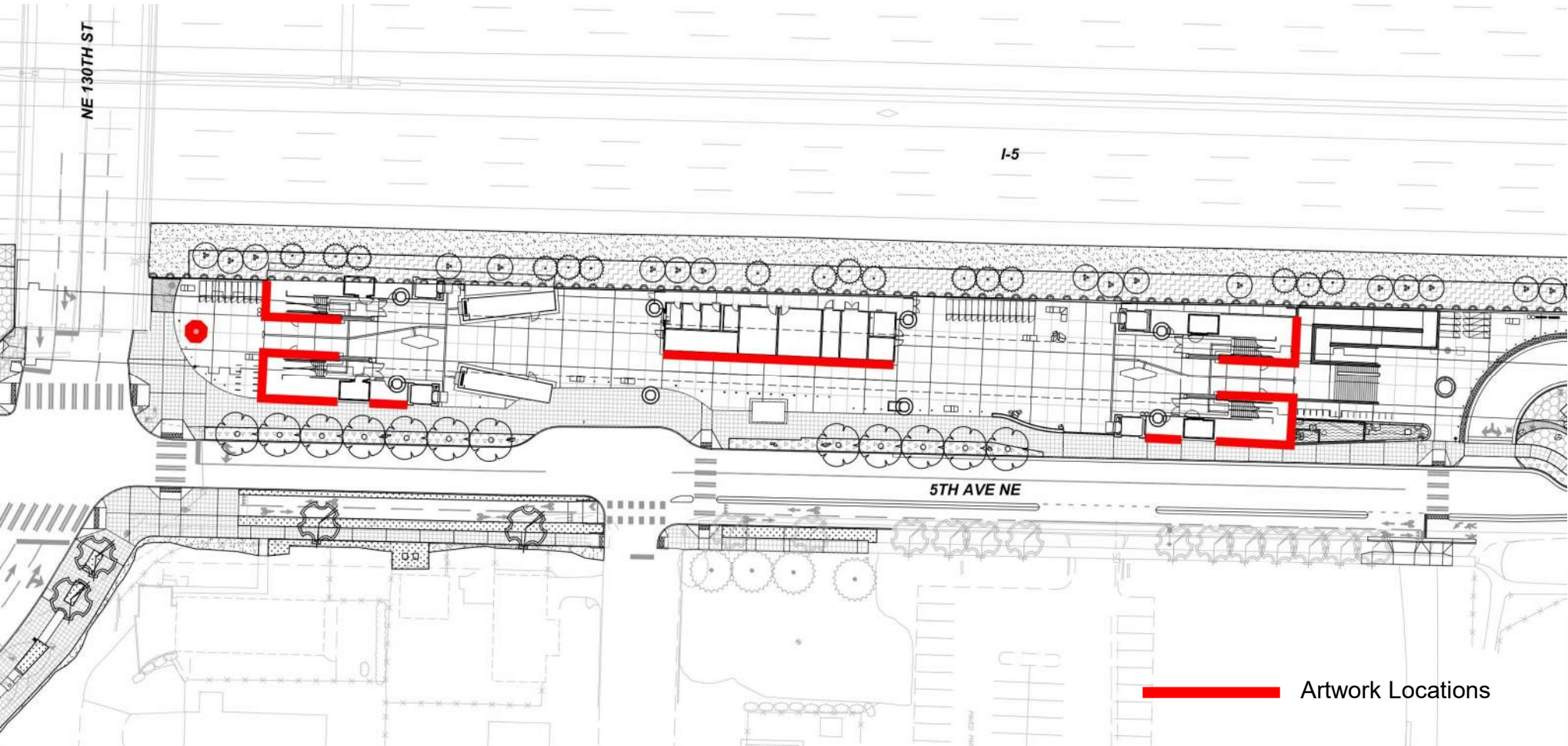
Community Engagement Plan



Artwork Development will include:

- Engagement with neighboring groups through workshops to expand glyphs "library" to better represent the community
- Romson will reach out to the selection panel to broaden reach for community engagement efforts
- Temporary Art Project in development
- Plan to present at the March PAAC Meeting
- Color palette to be finalized

Artwork Locations



Artwork Locations



STATION DESIGN CONCEPT

Overall Design Concept

CREEK BLUE COLOR LEADS PATRONS FROM THE STATION PLAZA TO PLATFORM AND ENHANCES STATION IDENTITY

STATION ART WELCOMES PATRONS TO THE STATION AND REFLECTS COMMUNITY'S IDENTITY AND THORNTON CREEK

BIORETENTION PLANTING AREAS UTILIZE STATION RUNOFF AND FEATURE A MIX OF NATIVE AND SENSORY PLANTS FOUND IN SIMILAR HABITATS AS THORNTON CREEK

MOMENTS OF DELIGHT SPRINKLED THROUGHOUT THE STATION PLAZA PROMOTE CHANCE ENCOUNTERS AND ENCOURAGE PATRONS TO SLOW DOWN ON THEIR COMMUTE



Station Design Updates



Color denoting vertical circulation elements

Increased safety and visual quality

Enhanced portal to station lobby

Wayfinding-supportive artwork

Improved sightlines via reduced height bike lockers



Design Concept



East Elevation – View from 5th Ave



West Elevation – View from I-5

Elements of Continuity

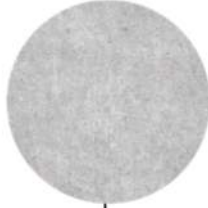
GRANITE
WAYFINDING
PAVER



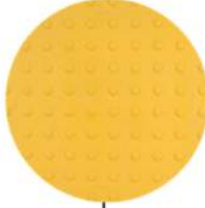
ELEVATOR
CONCRETE
PAVER



CAST IN PLACE
CONCRETE



WARNING
TILE



PLAZA
PAVING



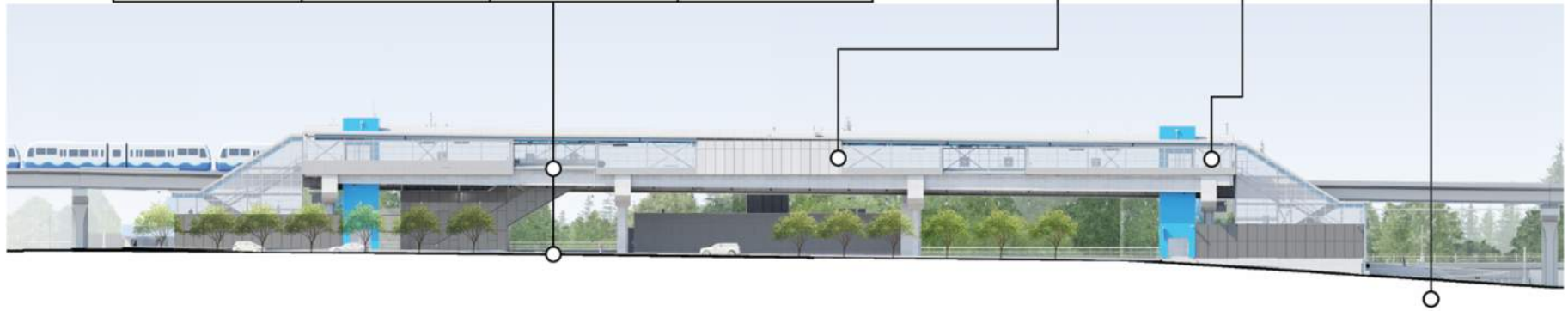
METAL PANEL
SILVER



PAINT
OLD MONTEREY



FRACTURED FIN
RETAINING WALL



Elements of Distinction - Materials



**TRANSLUCENT
LAMINATED GLASS**



**METAL PANEL
DARK SILVER**



POLISHED CMU



**METAL PANEL
"CREEK" BLUE**

Elements of Distinction – Landscape & Art



LANDSCAPE



ARTIST PALETTE



Places for People

Station plazas are designed for people.

Architectural detailing, landscape, and art work together to provide delight to those who pass through, as well as those who choose to stop for a while.



Designing Experiences

- Sound Transit measures successful design through the lens of human experience
- We've chosen several personas to frame the design presentation



Kala



Nico



Grey and
Ellison



Remi



Nour



Persona #1: Kala

Kala is a high school student who is meeting up with friends.

They travel to the station by bicycle.

1: Bicycle Network



PROPOSED PROJECTS OVERVIEW

Proposed projects improve multimodal access to the future NE 130th St & Shoreline South/148th Stations by creating a connected network in the 3 sectors of the project study area.

West Sector

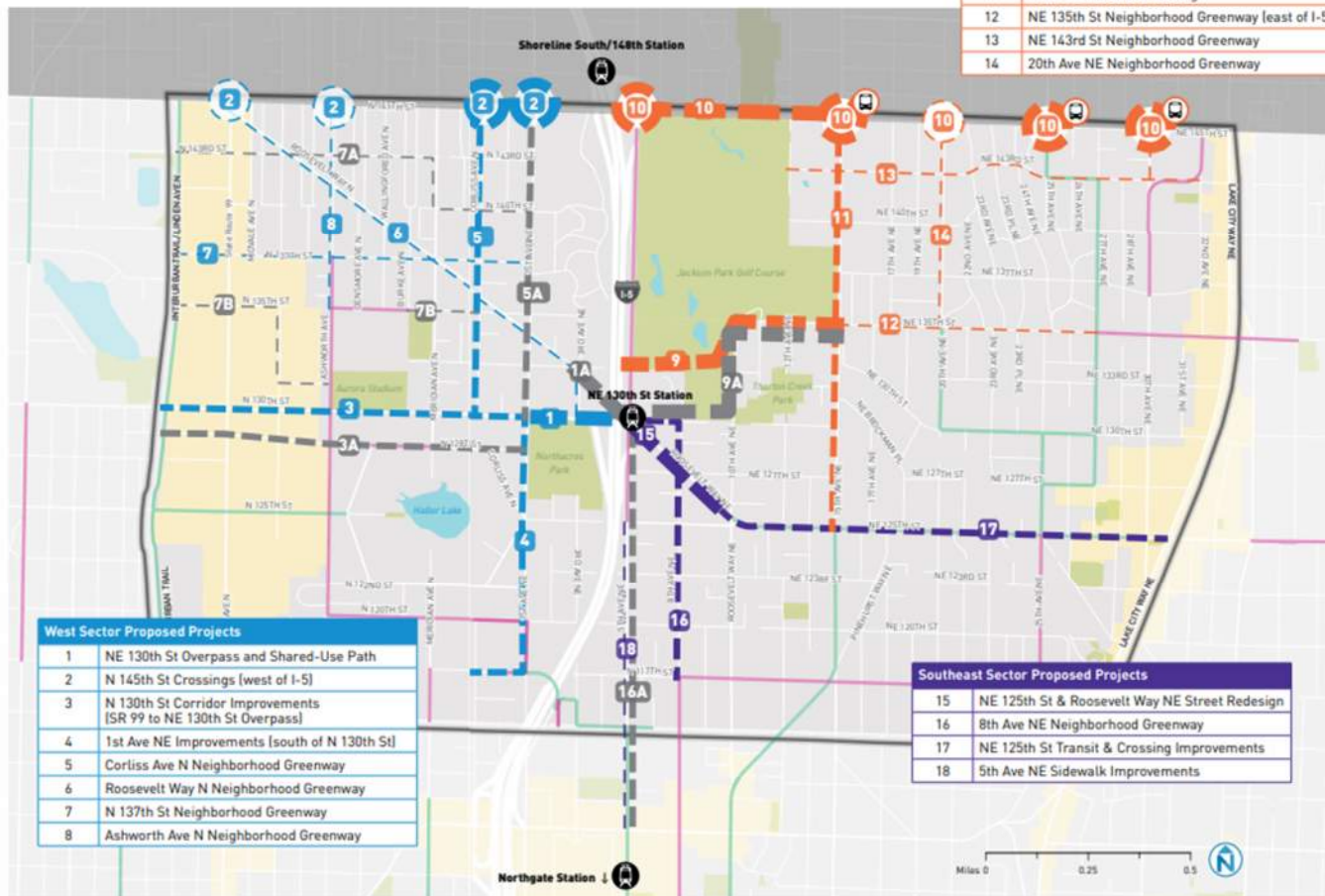
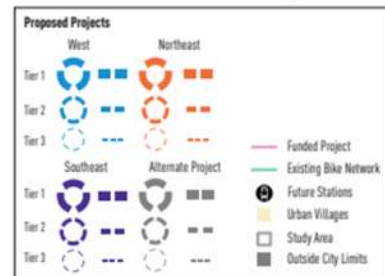
This area west of I-5 includes the Haller Lake neighborhood and Bitter Lake urban village. The Interurban Trail forms the western boundary.

Northeast Sector

The area northeast of the future NE 130th St Station includes Jackson Park, NE 145th St/SR 523, the Little Brook neighborhood, and the north part of the Lake City urban village. Lake City Way NE/SR 522 is the eastern boundary.

Southeast Sector

The area southeast of the future NE 130th St Station includes Roosevelt Way NE/NE 125th St, the Pinehurst neighborhood, and the southern part of the Lake City urban village. Lake City Way NE/SR 522 is the eastern boundary, and NE 115th St is the southern boundary.



Northeast Sector Proposed Projects	
9	Jackson Park Trail Improvements
10	NE 145th St crossings & Sidewalk Improvements (east of I-5)
11	15th Ave NE Street Redesign
12	NE 135th St Neighborhood Greenway (east of I-5)
13	NE 143rd St Neighborhood Greenway
14	20th Ave NE Neighborhood Greenway

West Sector Proposed Projects	
1	NE 130th St Overpass and Shared-Use Path
2	N 145th St Crossings (west of I-5)
3	N 130th St Corridor Improvements (SR 99 to NE 130th St Overpass)
4	1st Ave NE Improvements (south of N 130th St)
5	Corliss Ave N Neighborhood Greenway
6	Roosevelt Way N Neighborhood Greenway
7	N 137th St Neighborhood Greenway
8	Ashworth Ave N Neighborhood Greenway

Southeast Sector Proposed Projects	
15	NE 125th St & Roosevelt Way NE Street Redesign
16	8th Ave NE Neighborhood Greenway
17	NE 125th St Transit & Crossing Improvements
18	5th Ave NE Sidewalk Improvements

Five proposed projects include feasible alternatives considered during project development. More detail on alternate projects can be found in the detailed project overviews in Ch. 5.



1. Bike Parking

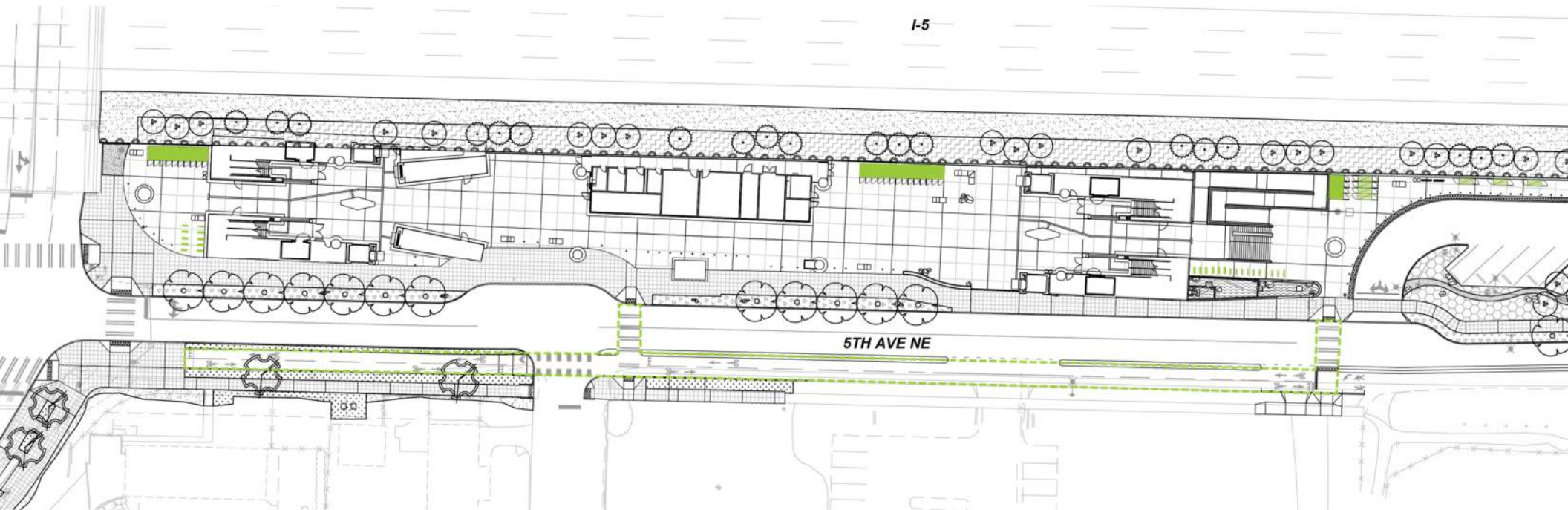


Bike Rack

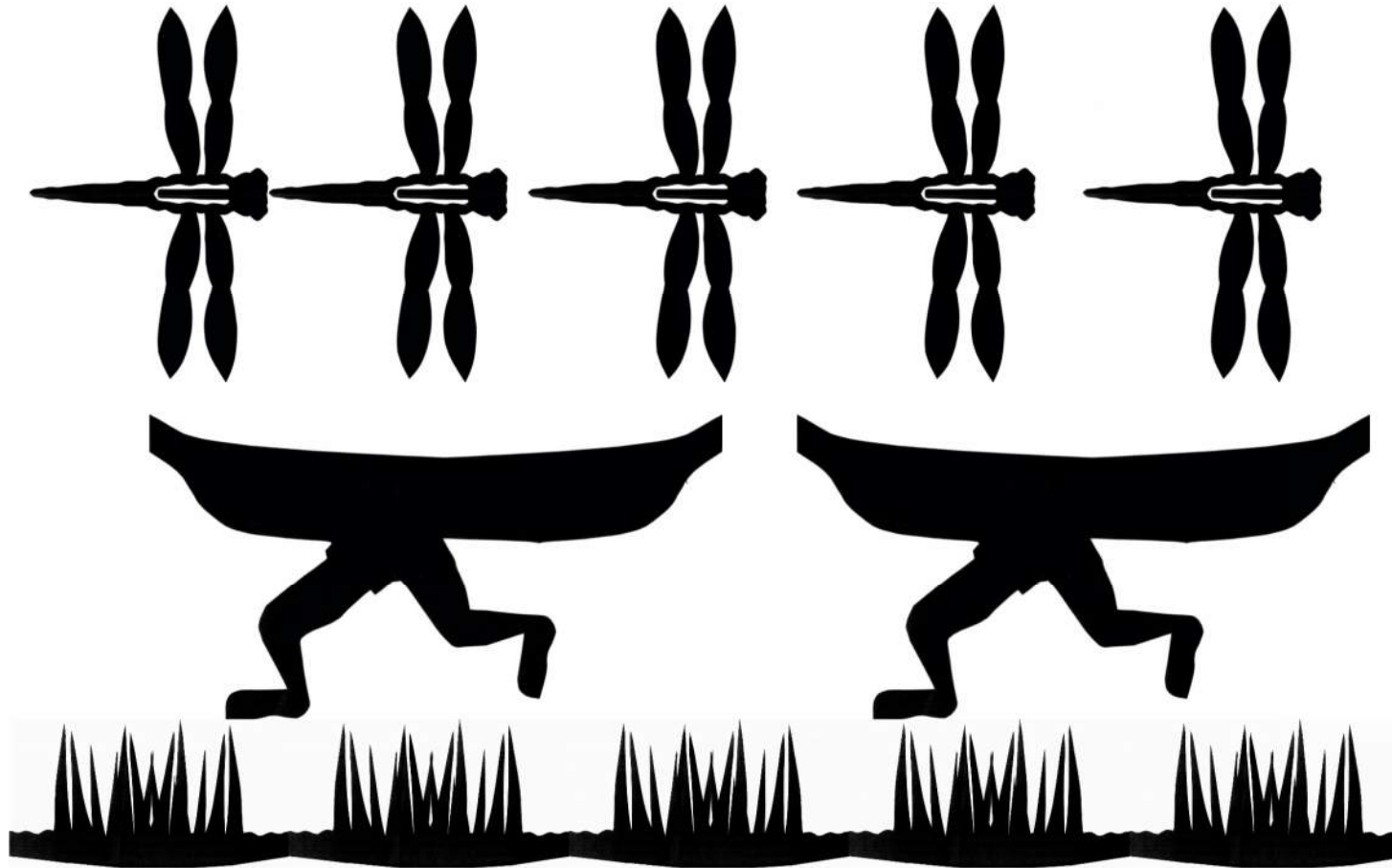


Bike Locker

NE 130th Station will have 28 short-term bike parking spaces and 22 bike locker spaces for passenger use on opening day, with capacity to double this in the future.



1: South Plaza Artwork

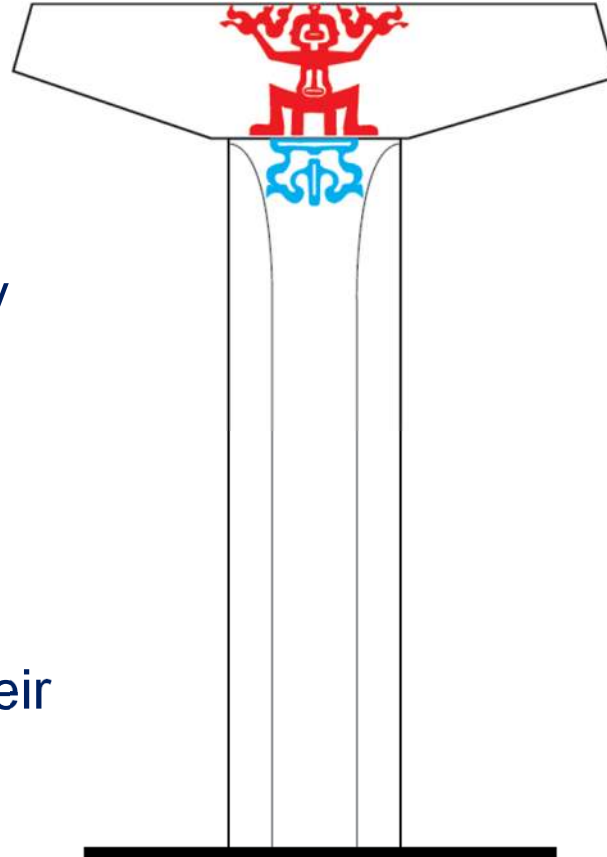


1: South Plaza Artwork

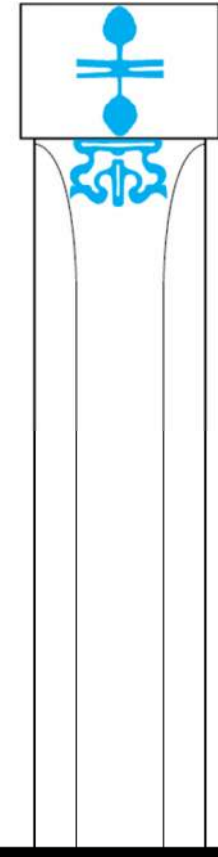


Art at the south plaza will include the painted guideway column that embraces the monumental scale of the station structure.

The column is a convenient landmark for Kala to meet their friends.

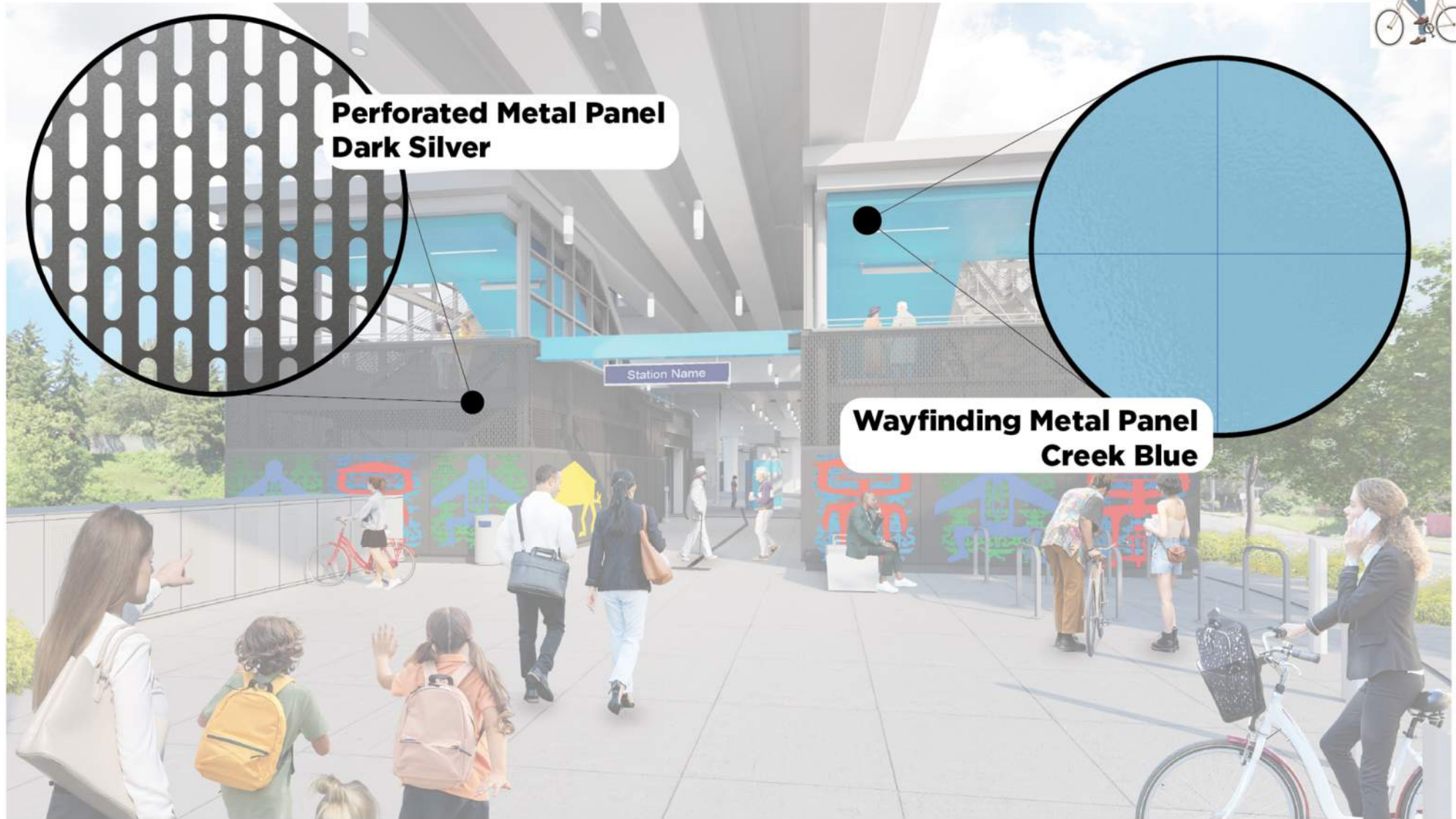


FRONT VIEW OF WELCOME COLUMN



SIDE VIEW OF WELCOME COLUMN

1: South Plaza

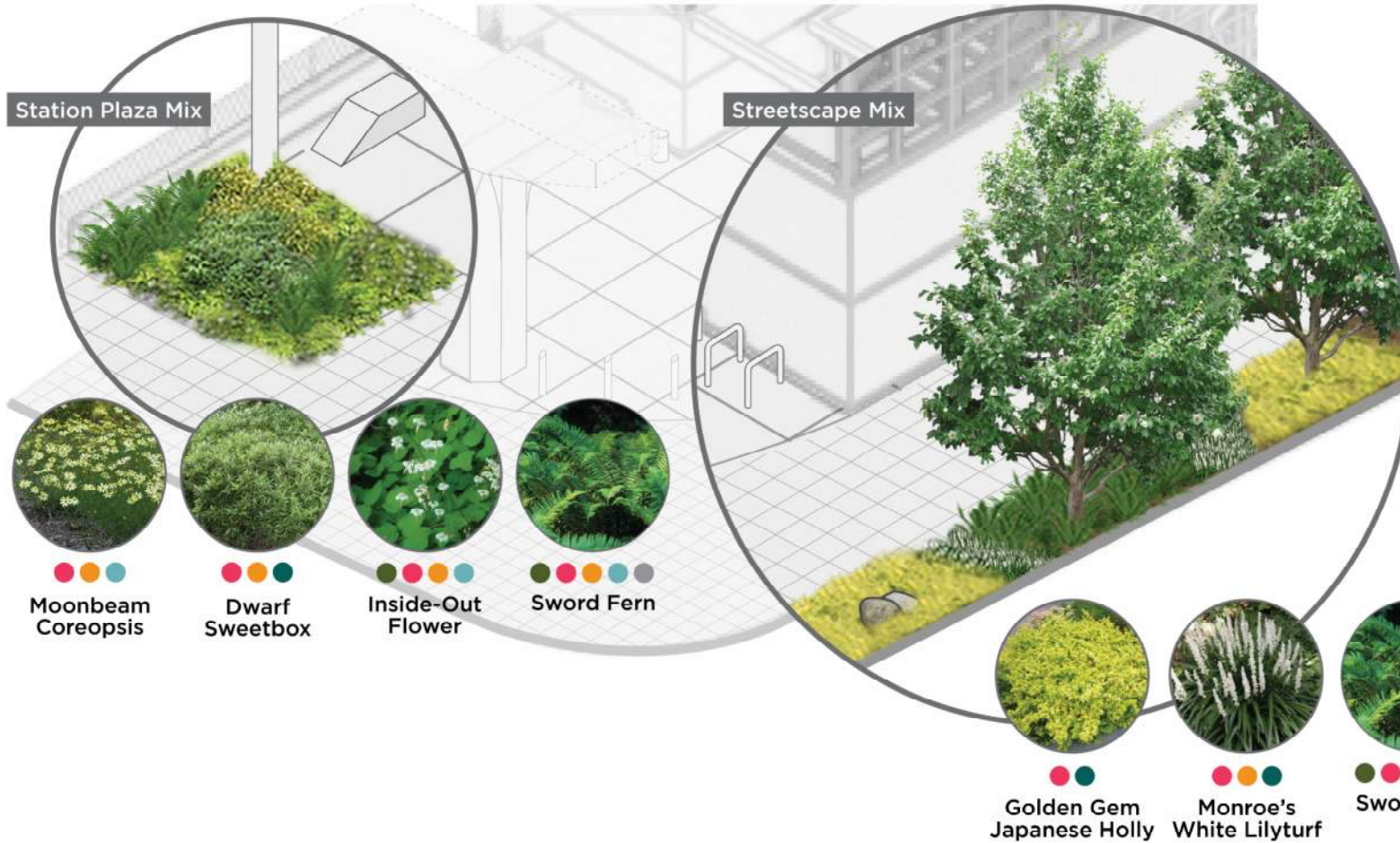


**Perforated Metal Panel
Dark Silver**

**Wayfinding Metal Panel
Creek Blue**



1: South Plaza Landscape



Plant Features

- Found in riparian forested areas like Thornton Creek
- Seasonal Interest
- Sensory Qualities
- Native
- Climate-Adapted
- Cultural Value



1: South Plaza Site Furnishings



Light Fixture



Bench



Bollards



Litter Receptacles



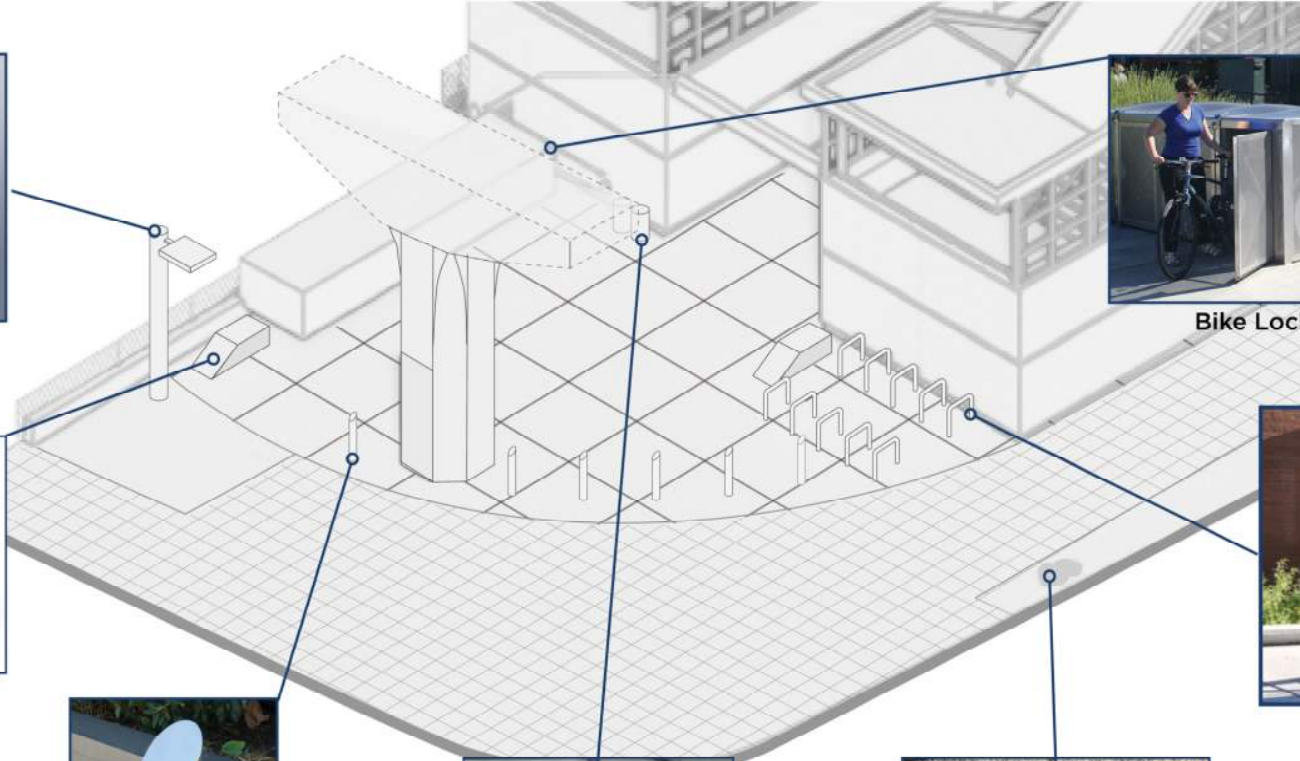
Weathered Boulders



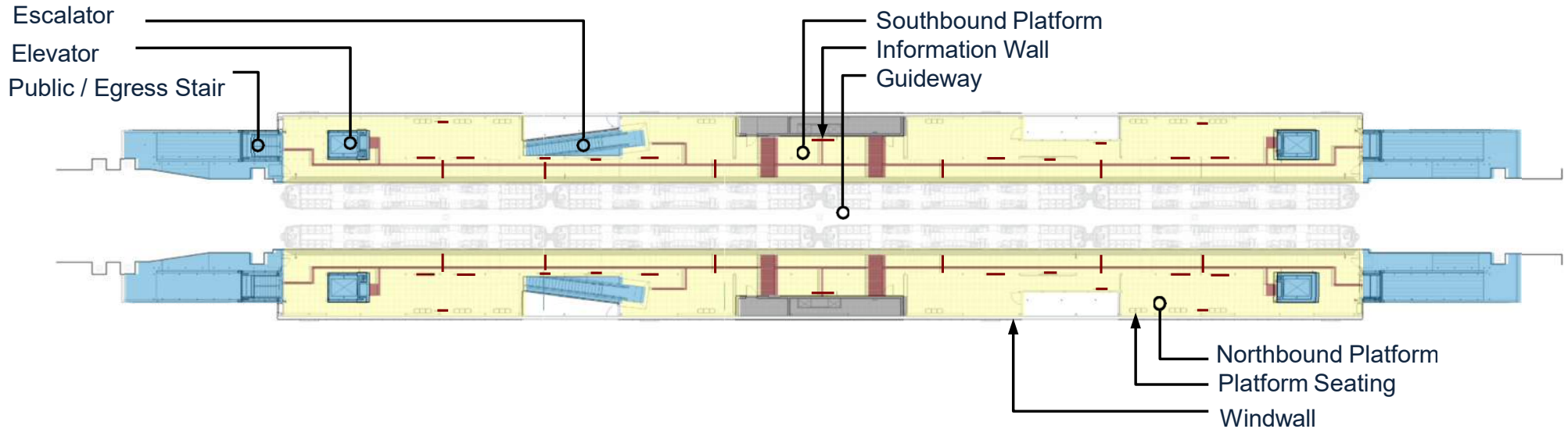
Bike Lockers



Bike Racks



1: Platform plan



- Vertical Circulation
- Platform Arrival
- Platform
- Wayfinding Path
- Wayfinding Signage
- Ancillary Space

1: Station platform

Platform LED lighting

Blue feature color selected through outreach process

Clear station signage throughout station platform

Information Kiosk at center of platform

Tactile wayfinding path



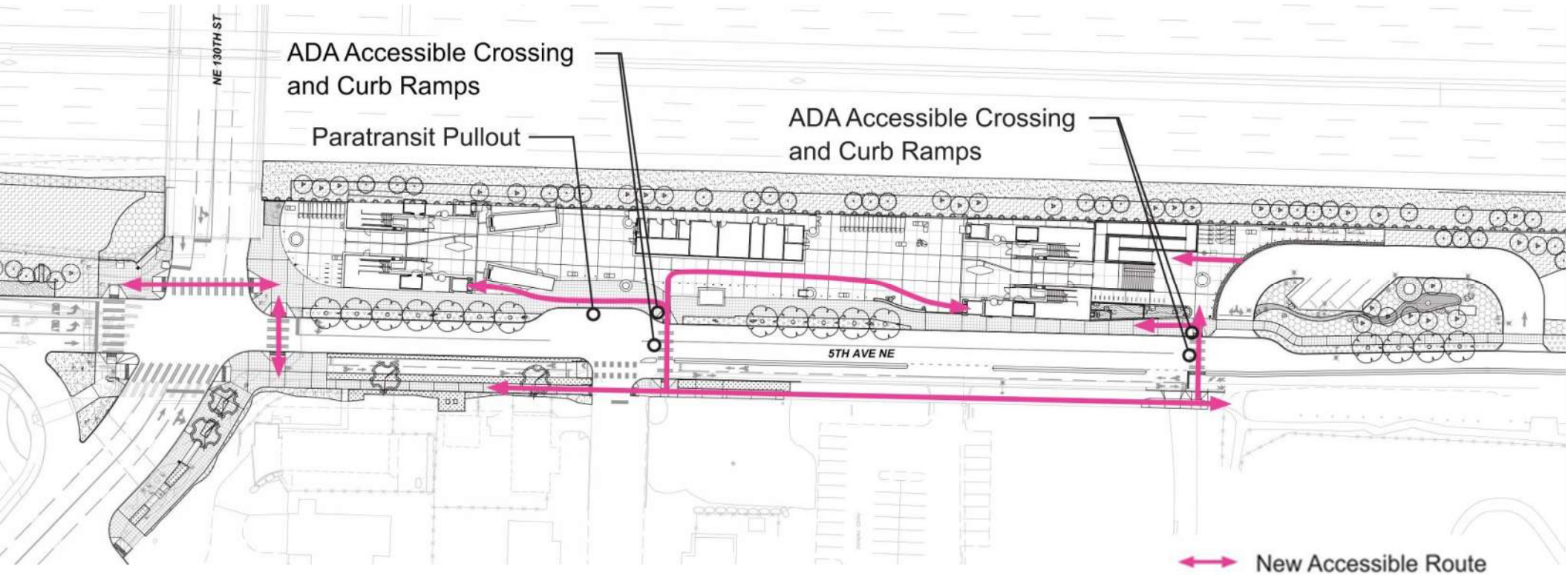


Persona #2: Nico

Nico rides Link regularly to travel to Seattle.

He arrives via Access paratransit bus at the Central Plaza area.

2: Station Accessibility



2: 5th Avenue Drop-off



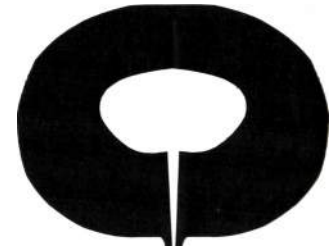
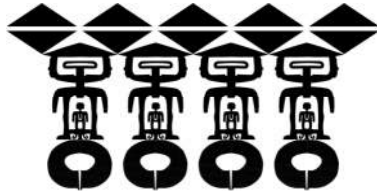
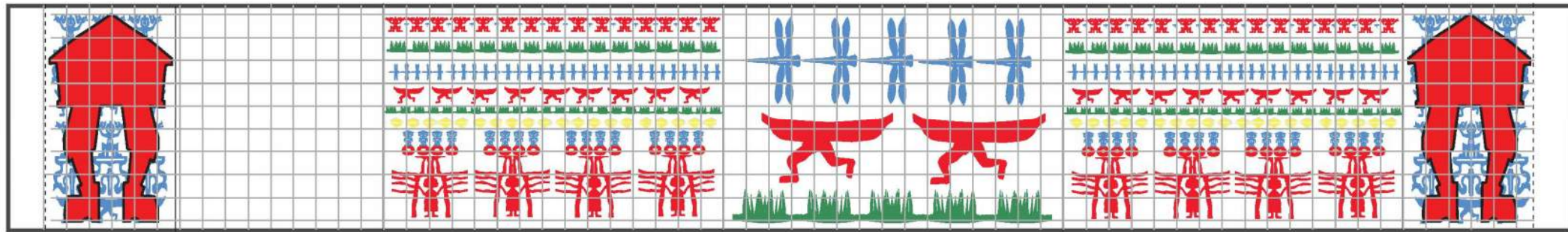
East ancillary wall art visible to the public and station patrons

Pick-up and drop-off location

Street edge planting



2: Artwork at Central Plaza



2: South Lobby



2: Central Plaza Landscape & Hardscape



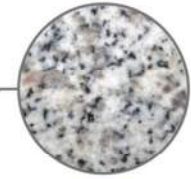
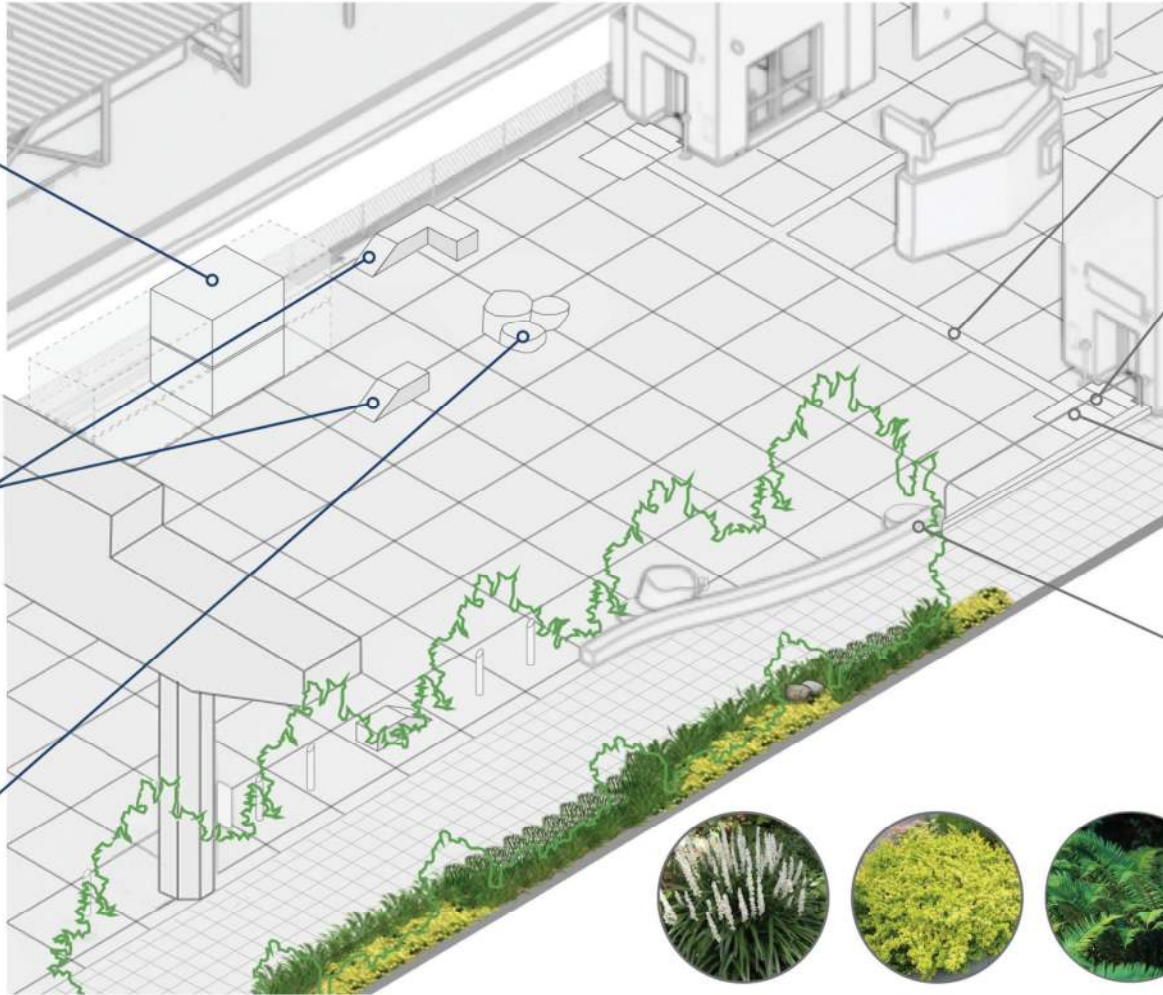
Bike Lockers



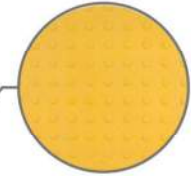
Bench



Weathered Boulders



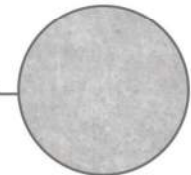
Granite Wayfinding Paver



Detectable Warning Paver



Elevator Concrete Tactile Paver



Cast-In-Place Concrete



Monroe's White Lilyturf



Golden Gem Japanese Holly



Sword Fern



Japanese Stewartia



Persona #3: Grey and Ellison



Grey and Ellison are headed to the airport.

They arrive at the station by car, at the north Drop-Off area, on a very rainy day.



Persona #4: Remi

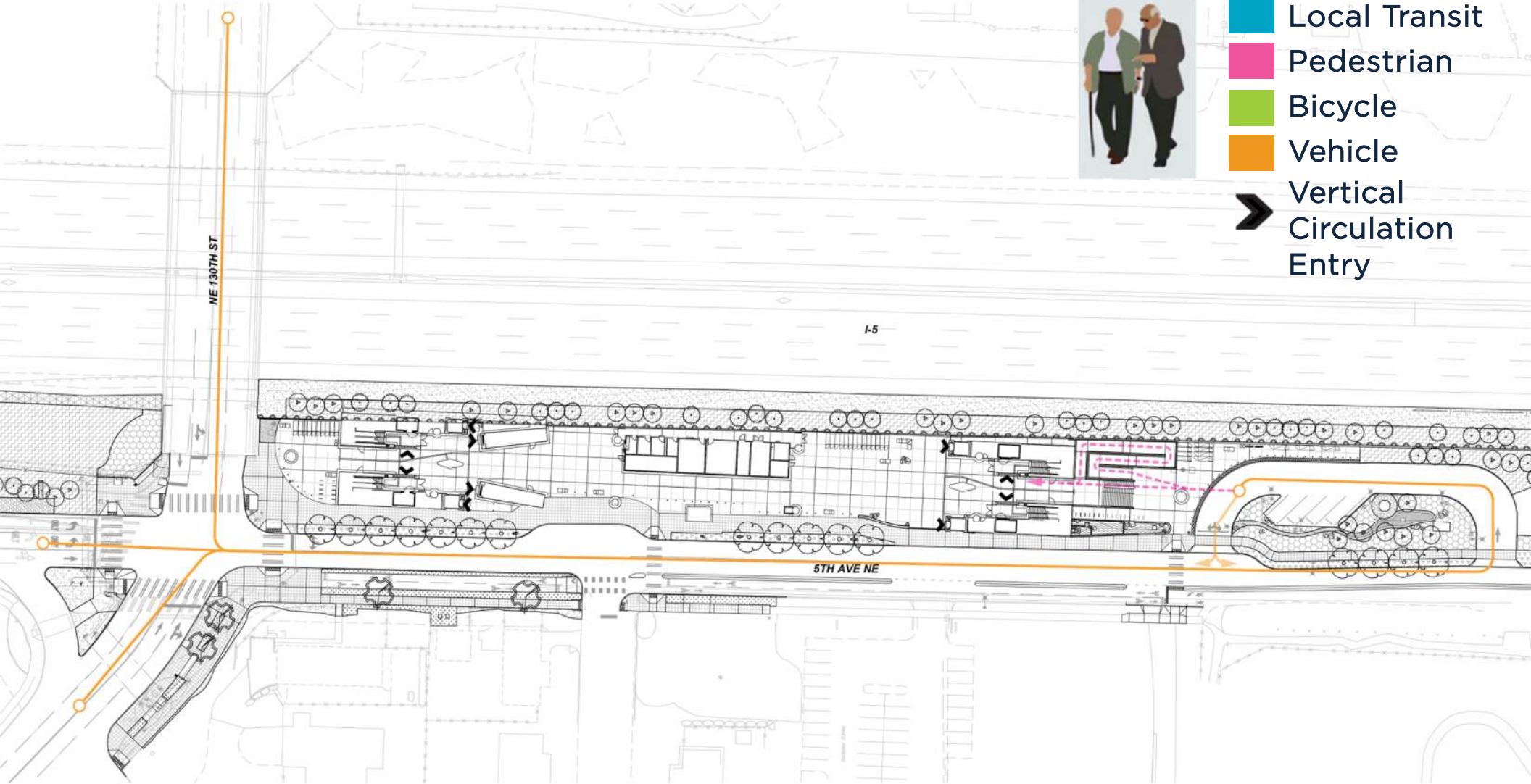
Remi is a local author who works from home.

She often walks to the station plaza as a nearby public space.

3: Vehicular Access



- Local Transit
- Pedestrian
- Bicycle
- Vehicle
- Vertical Circulation Entry



3: Drop-Off Area Landscape

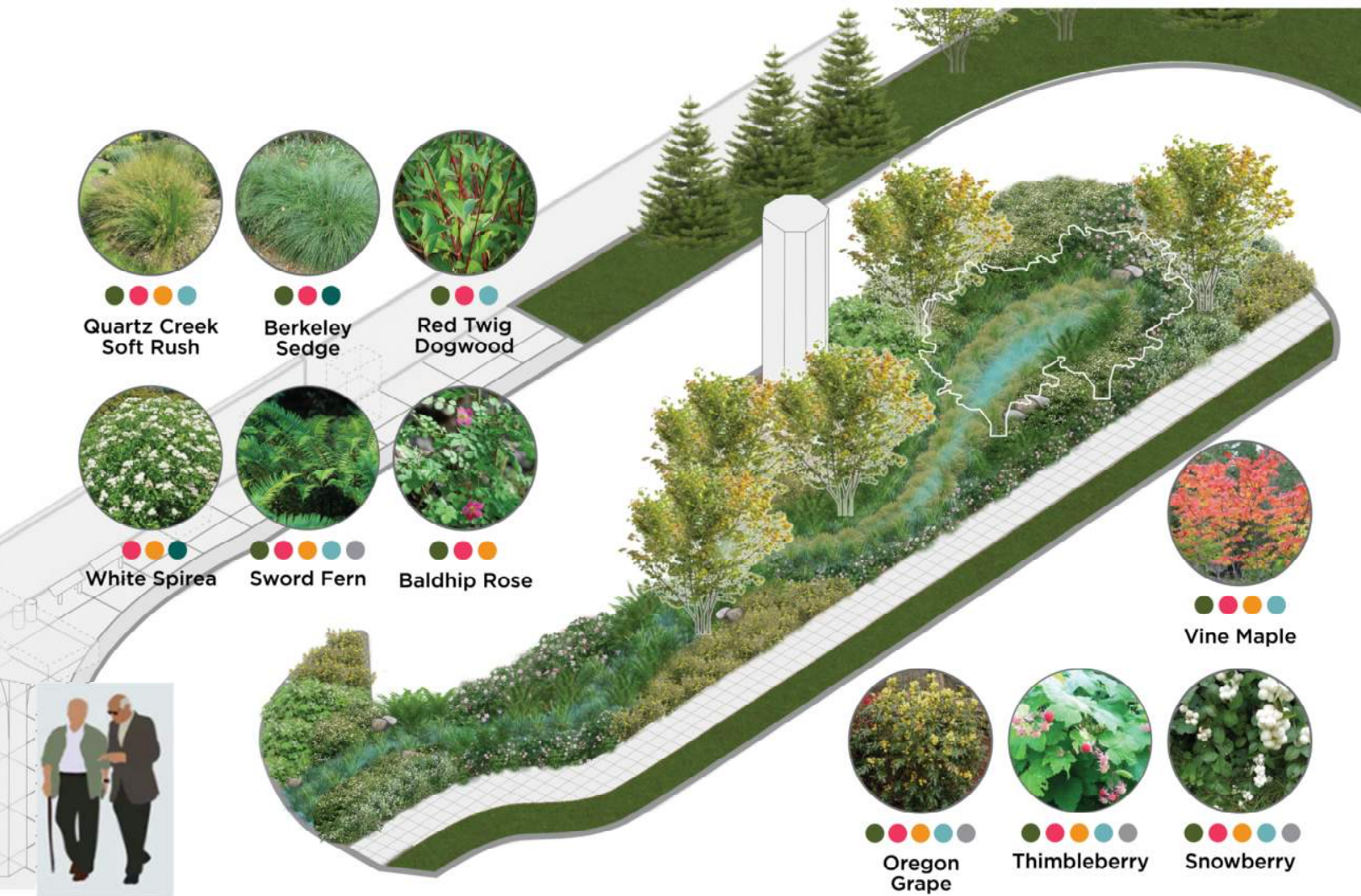
North plaza entry

Maintenance Parking

Bioretention feature



3: Drop-Off Area Landscape



● ● ● ● ●
Quartz Creek Soft Rush



● ● ● ● ●
Berkeley Sedge



● ● ● ● ●
Red Twig Dogwood



● ● ● ● ● ●
White Spirea



● ● ● ● ● ● ●
Sword Fern



● ● ● ● ● ●
Baldhip Rose



● ● ● ● ● ●
Vine Maple



● ● ● ● ● ● ● ●
Oregon Grape



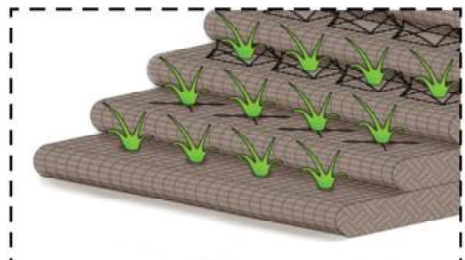
● ● ● ● ● ● ● ● ●
Thimbleberry



● ● ● ● ● ● ● ● ● ●
Snowberry

Plant Features

- Found in riparian forested areas like Thornton Creek
- Seasonal Interest
- Sensory Qualities
- Native
- Climate-Adapted
- Cultural Value



Planting Detail



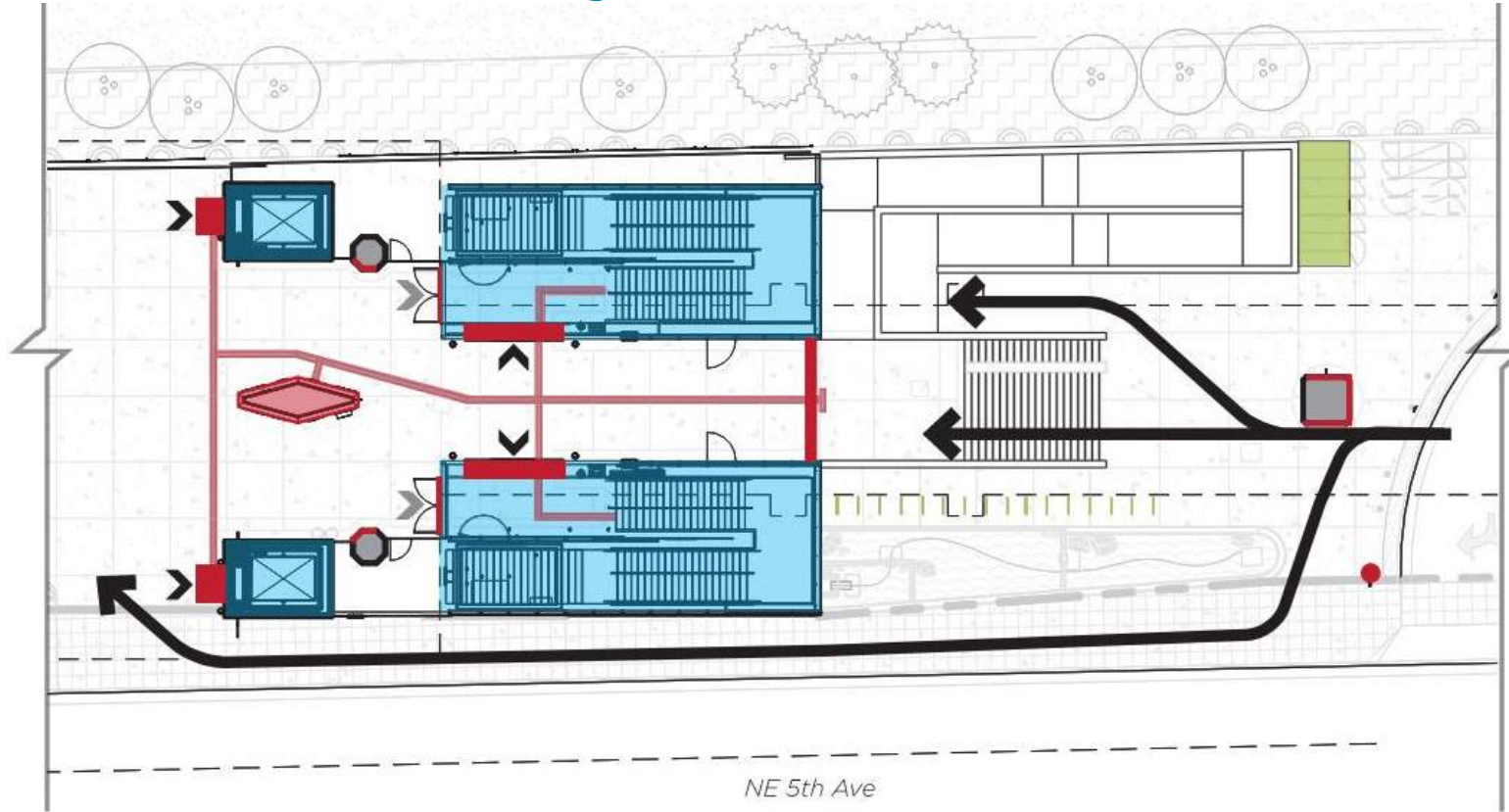
Precedent: Thornton Creek Water Quality Channel project



3: North Plaza



3: North Entry



- Equity of access
- Common points of decision making

- ➔ Station Arrival
- Primary Vertical Circulation Entry
- Wayfinding Elements



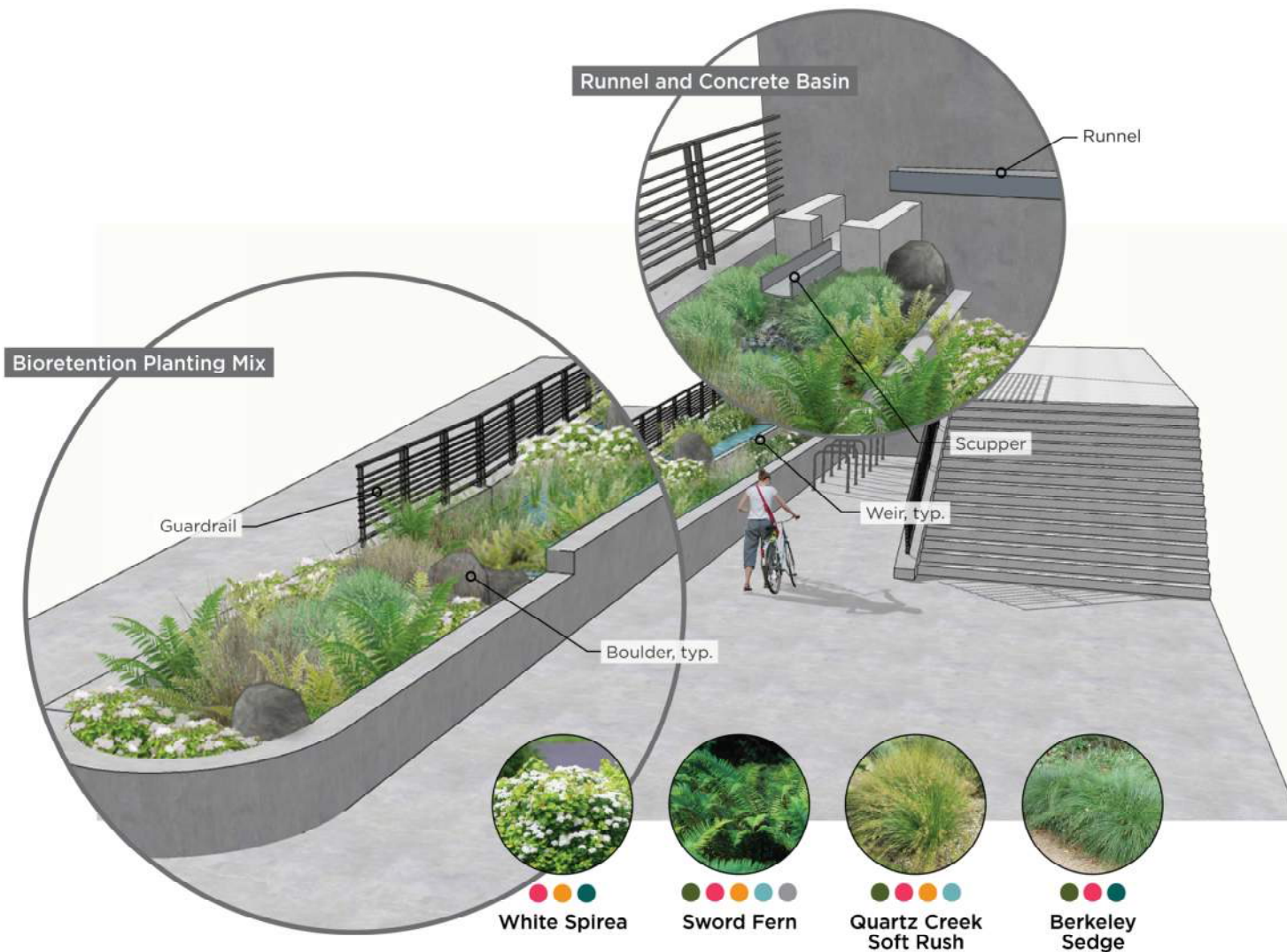
3: *Bioretention Water Feature*

Artful (beautiful & engaging) stormwater design: an approach to sustainable stormwater management in which the system is designed as a landscape amenity and provides awareness and delight to visitors

- Emphasizes rain is a precious resource worthy of celebration
- Saves irrigation water usage



3: Bioretention Water Feature



Plant Features

- Found in riparian forested areas like Thornton Creek
- Seasonal Interest
- Sensory Qualities
- Native
- Climate-Adapted
- Cultural Value



3: Drop-Off Area Site Furnishings



Bike Lockers



Lean Rail



Litter Receptacles



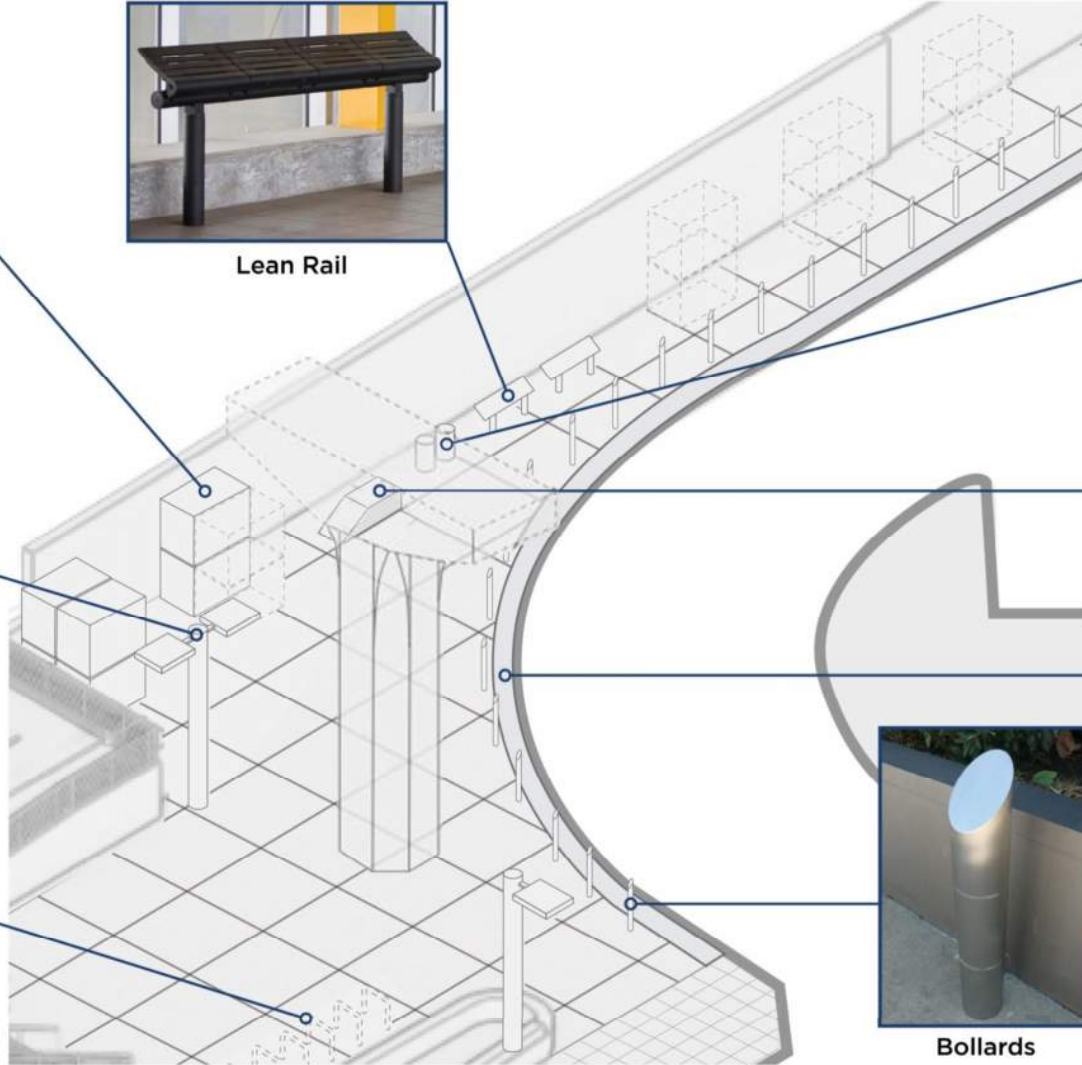
Light Fixture



Bench



Bike Racks



Detectable Warning Paver



Bollards



3: North Lobby

Color is used strategically to support passenger wayfinding

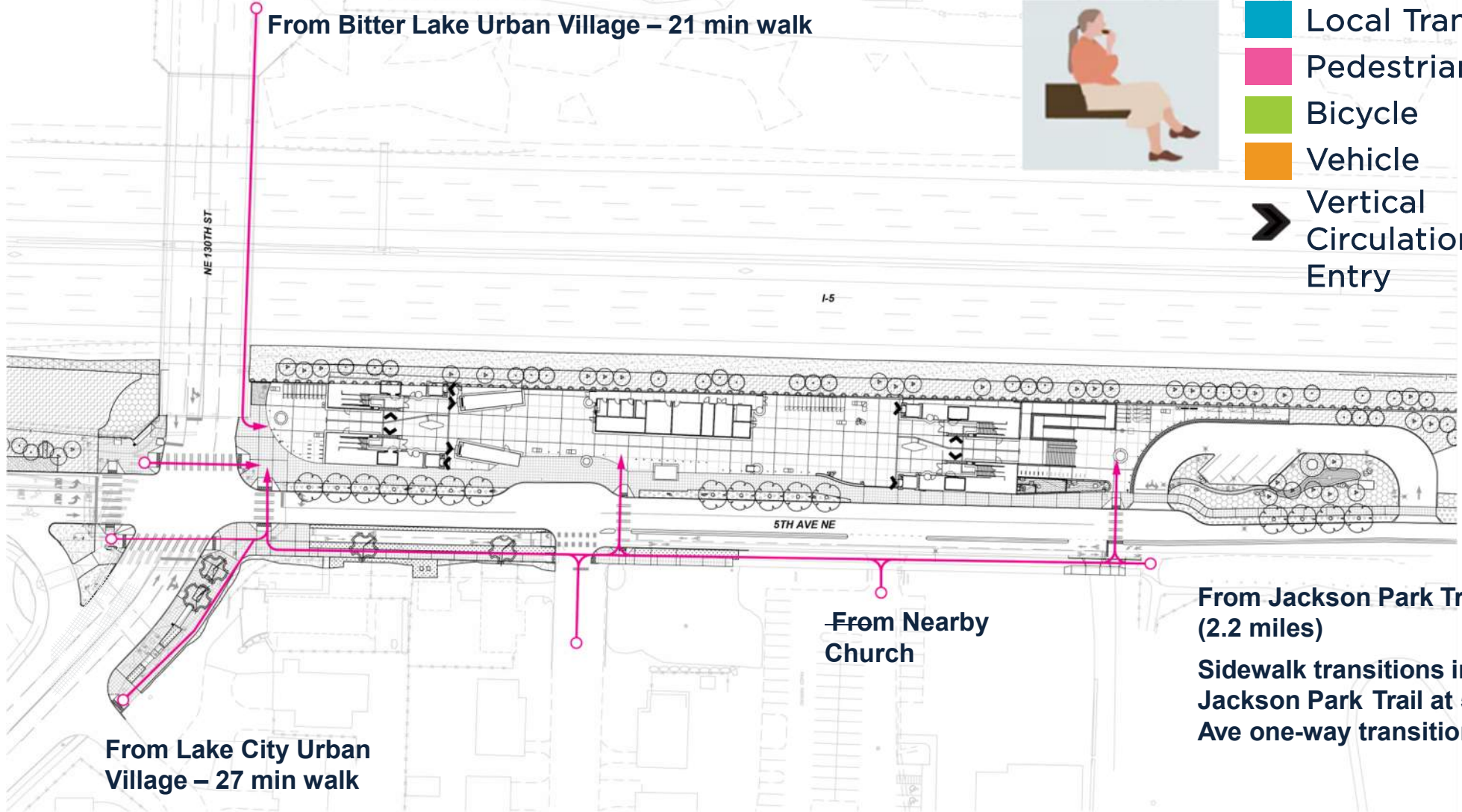


4: Site Access - Pedestrian

From Bitter Lake Urban Village – 21 min walk

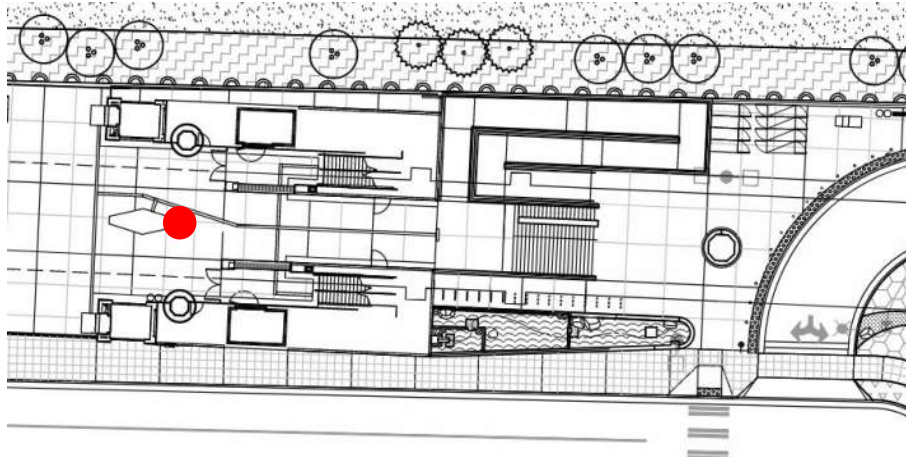


- Local Transit
- Pedestrian
- Bicycle
- Vehicle
- Vertical Circulation Entry



4: Interpretive Signage

- The landscape and sustainability features will be described in interpretive signage
- The signage will be placed in the station plaza



Sustainability

YOU ARE A SUSTAINABILITY CHAMPION FOR RIDING PUBLIC TRANSIT
Link light rail is powered by carbon free electricity

NE 130TH STREET STATION

DRAFT IMAGE

LEED Gold Certified
First regional transit/light rail station LEED Transit certification in the USA

Connecting Communities

- Connects to buses, trains, to the airport, and more
- Universal accessibility
- Accessible for pedestrians and cyclists

Water Efficiency

- Ultra-water-efficient plumbing fixtures
- Landscaping with drought tolerant and native plants
- Landscape features capture rain to reduce stormwater runoff

Energy Efficiency

- Escalators reduce speed to conserve energy when not in use
- LED lighting to conserve energy and reduce maintenance
- Building Management Systems track and reduce energy use.
- Light colored surfaces for natural temperature control

Low Carbon Healthy Materials

- Design ensures resilience to climate change impacts such as X and X
- xx percent recycled; X percent locally harvested and manufactured.
- The recycling of more than x percent of construction waste.
- Nontoxic, low emitting building materials

Social Equity

- Affordable fares
- Local living wage jobs added in construction and operations

More information can be found by scanning the QR code
visiting the QR code
www.soundtransit.org/get-to-know-us/environmental-sustainability

Sound Transit is an American Public Transportation Association (APTA) Platinum Sustainability Founding Signatory.

Persona #5: Nour

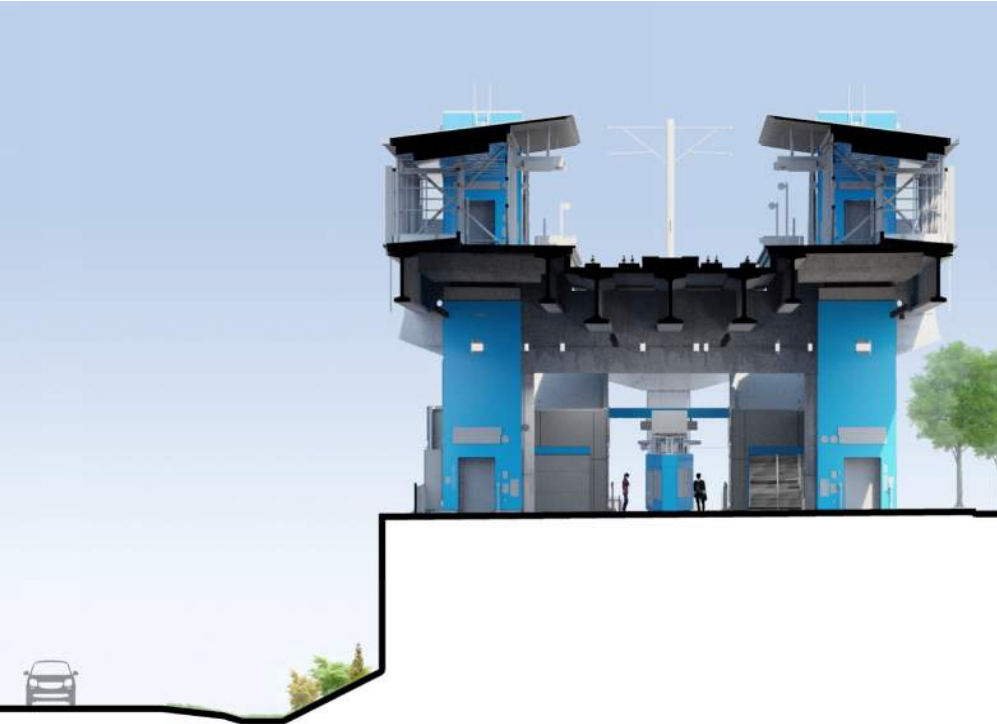
Nour lives in North Seattle and drives daily on the I-5 to her job in Everett.



5: *The I-5 Driver's Experience*



5: Station as Landmark



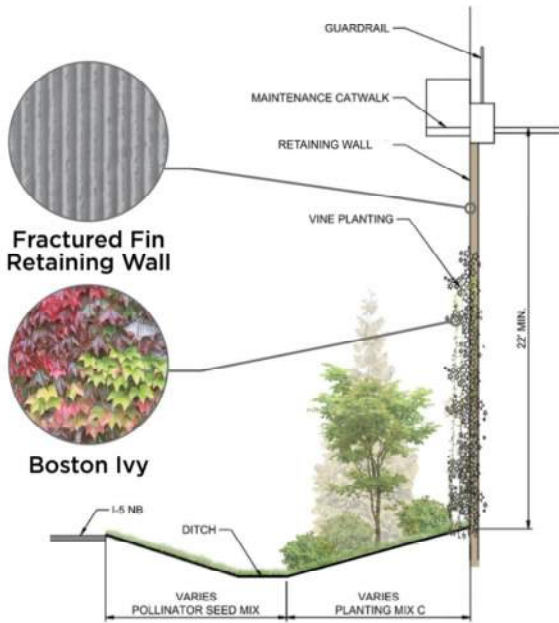
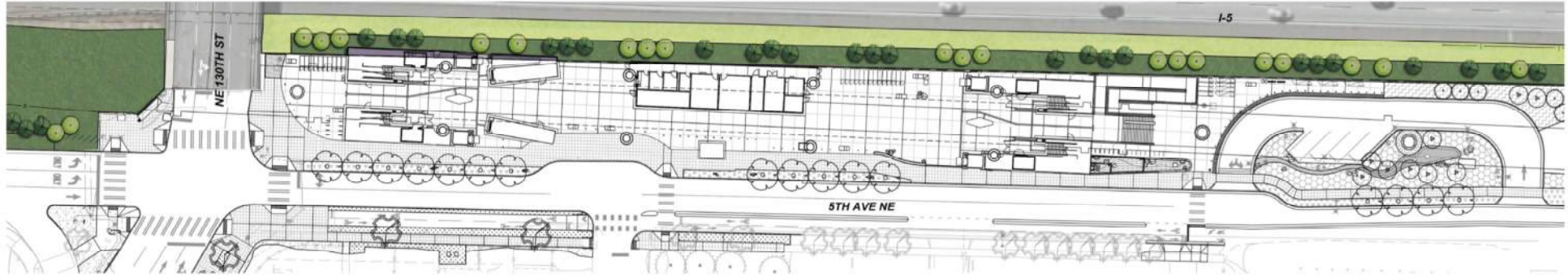
NE 130th Station will be a prominent civic landmark along the I-5 corridor.

The scale and relationship to the highway are already apparent as construction progresses.



Construction progress as of Fall 2022

5: I-5 Side Landscape



Fractured Fin Retaining Wall



Boston Ivy

Typical Section: Planting Along I-5



Vine Maple



Excelsa Western Red Cedar



Hogan Cedar



Pacific Wax Myrtle



Snowberry



Oregon Grape



Thimbleberry



Salal

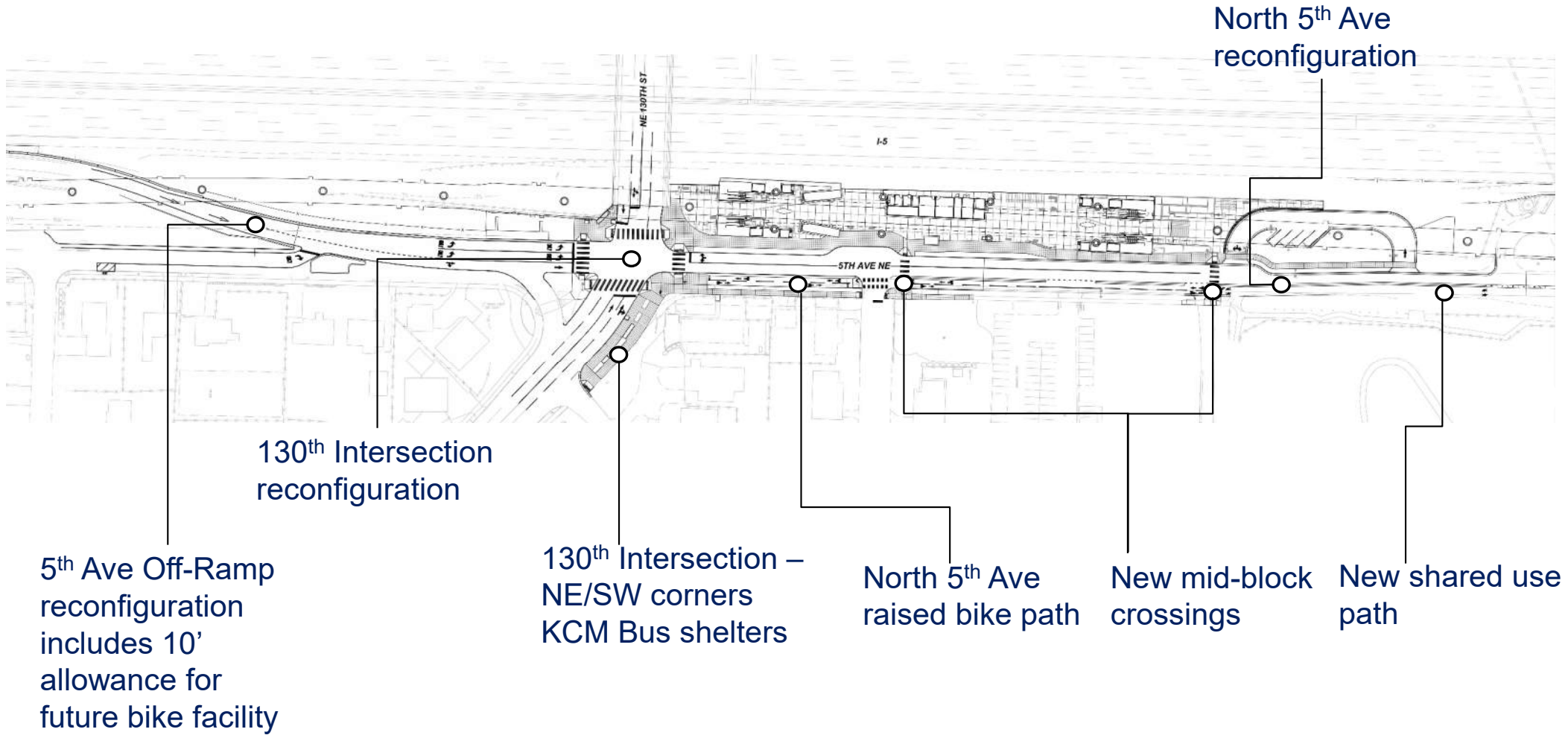


Evergreen Huckleberry

Plant Features

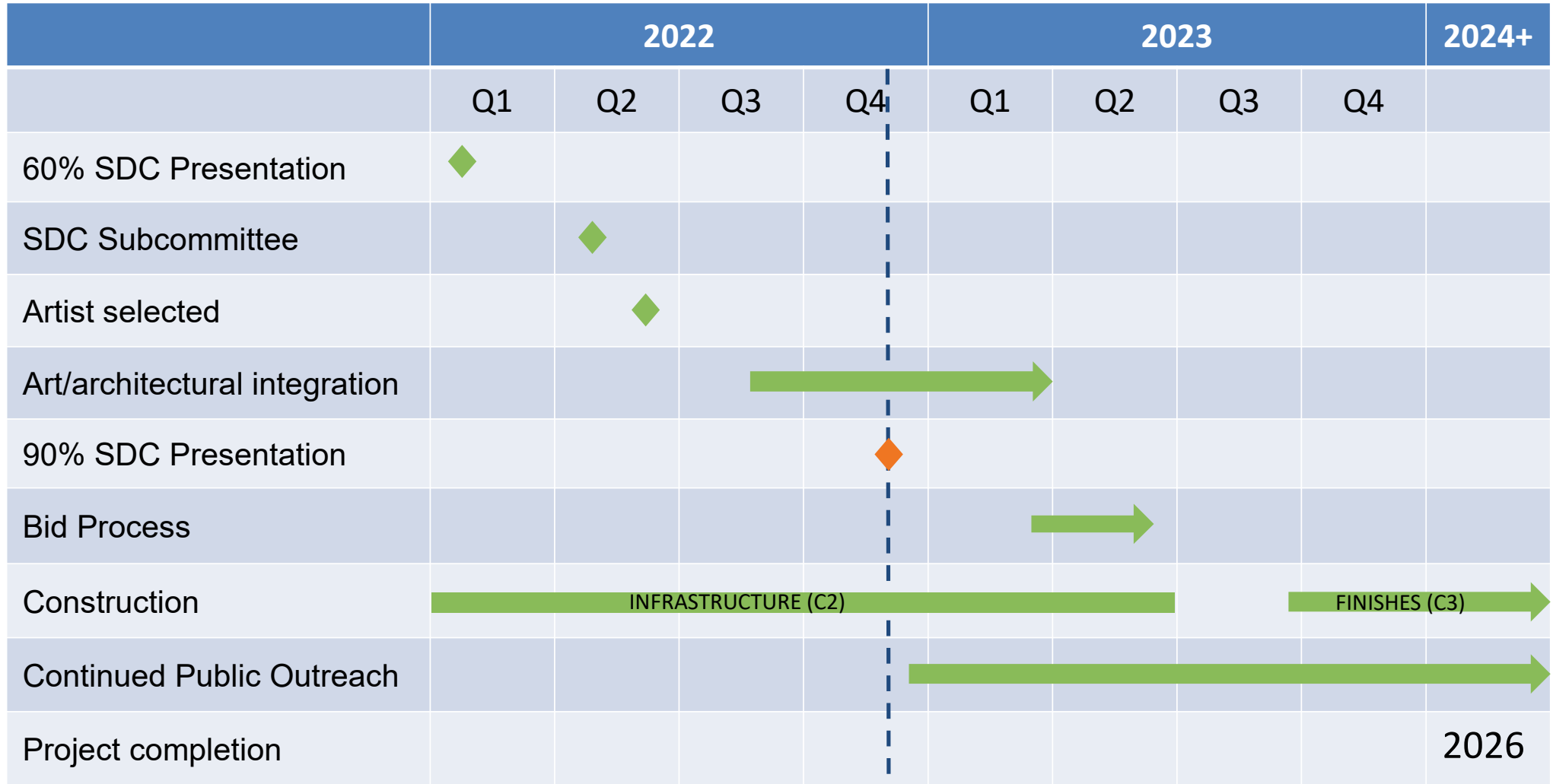
- Found in riparian forested areas like Thornton Creek
- Seasonal Interest
- Sensory Qualities
- Native
- Climate-Adapted
- Cultural Value

5: Off-Ramp + Street Improvements



STATION COMPLETION SCHEDULE

Schedule: Station Completion



Questions & Comments

Thank you



 [soundtransit.org](https://www.soundtransit.org)

