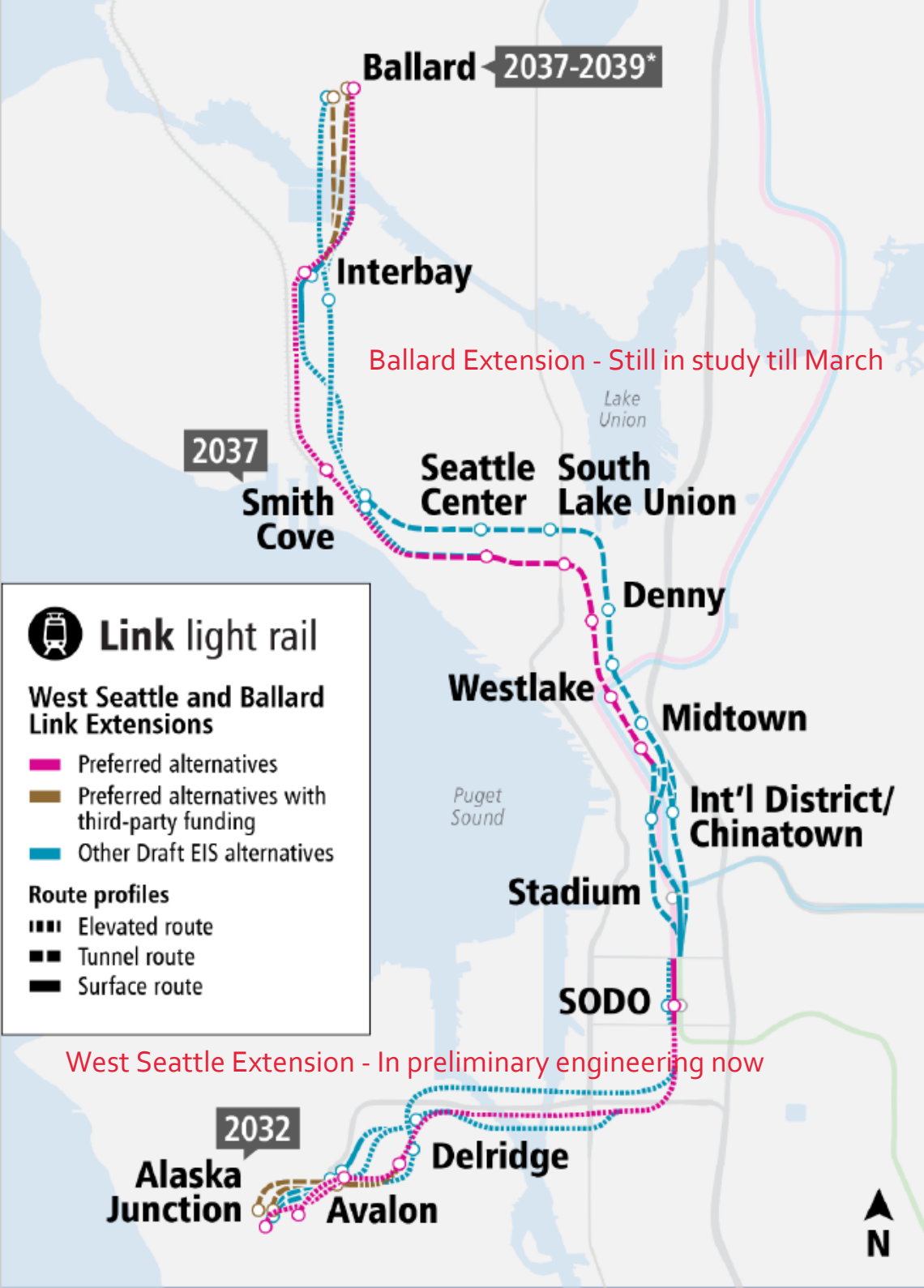


Seattle Design Commission

West Seattle to Ballard Link Extension

Staff Update
March 2, 2023



Link light rail

West Seattle and Ballard Link Extensions

- █ Preferred alternatives
- █ Preferred alternatives with third-party funding
- █ Other Draft EIS alternatives

Route profiles

- Elevated route
- Tunnel route
- Surface route



Timeline and milestones



Voter approval (2016)



Planning, 2017 to 2023

WE ARE HERE



Milestone	Target
Alternatives development	
Board identifies preferred and other Draft EIS alternatives	
Draft Environmental Impact Statement	2019 - 2022
Board confirms or modifies the Preferred Alternative	West Seattle Extension - July 2022 2022 Ballard Extension - Spring 2023
Final Environmental Impact Statement / Preliminary Engineering (to 15%)	2022 - 2023
Board selects project to be built	2023
Federal Record of Decision	2023

15% Complete



Design, 2023 to 2027*



15%-100%



Construction, 2026 to 2037-2039*



Start of service (West Seattle 2032; Ballard 2037-2039*)

SDC Work Items for WSBLE Spring 2023

1. Complete input on new station locations

2. Begin input on Duwamish bridge design

Subcommittees. Full SDC briefing in April or May

3. Analyze kit-of-parts and standardized design

Discuss what defines "civic design"

Briefing by Sound Transit on kit-of-parts and standardization

4. Briefings by City staff on planning work

City-Sound Transit joint station area planning

SDOT led access and urban design work

OPCD led Equitable TOD work

OPCD/SDOT led Design Guidelines

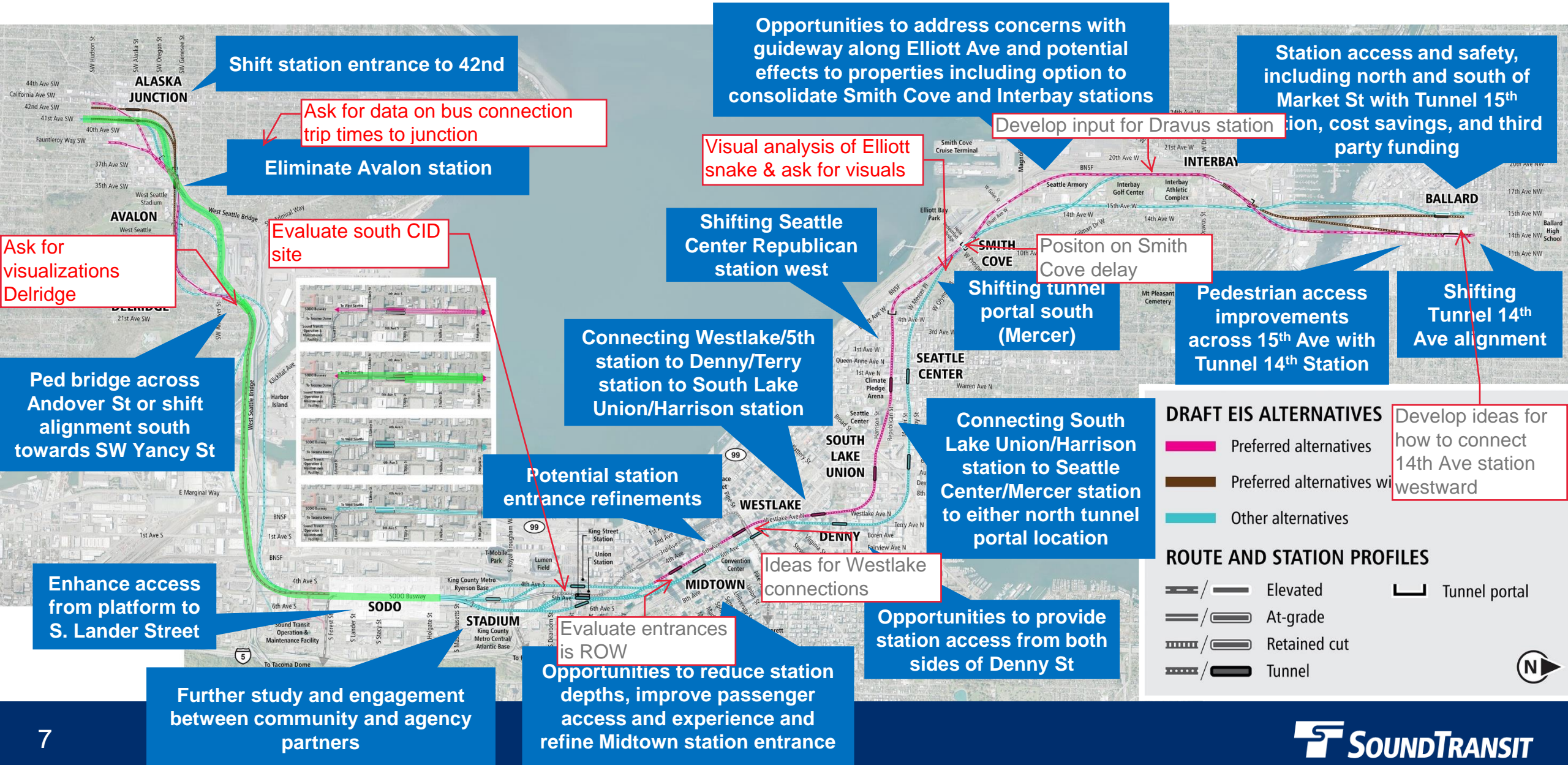
SDCI/SDOT led regulations amendments

5. Familiarize with Ballard Extension preferred alternative. Tours.

SDC staff work: EIS visual impacts and mitigation, code amendments, permitting process, alternatives refinement ad hoc advising, equity and engagement work group

Areas of Further Study

Possible SDC work items
 - Items to pursue in red
 - Items we don't have capacity for in gray



DRAFT EIS ALTERNATIVES

- Preferred alternatives
- Preferred alternatives with
- Other alternatives

ROUTE AND STATION PROFILES

- Elevated
- At-grade
- Retained cut
- Tunnel
- Tunnel portal



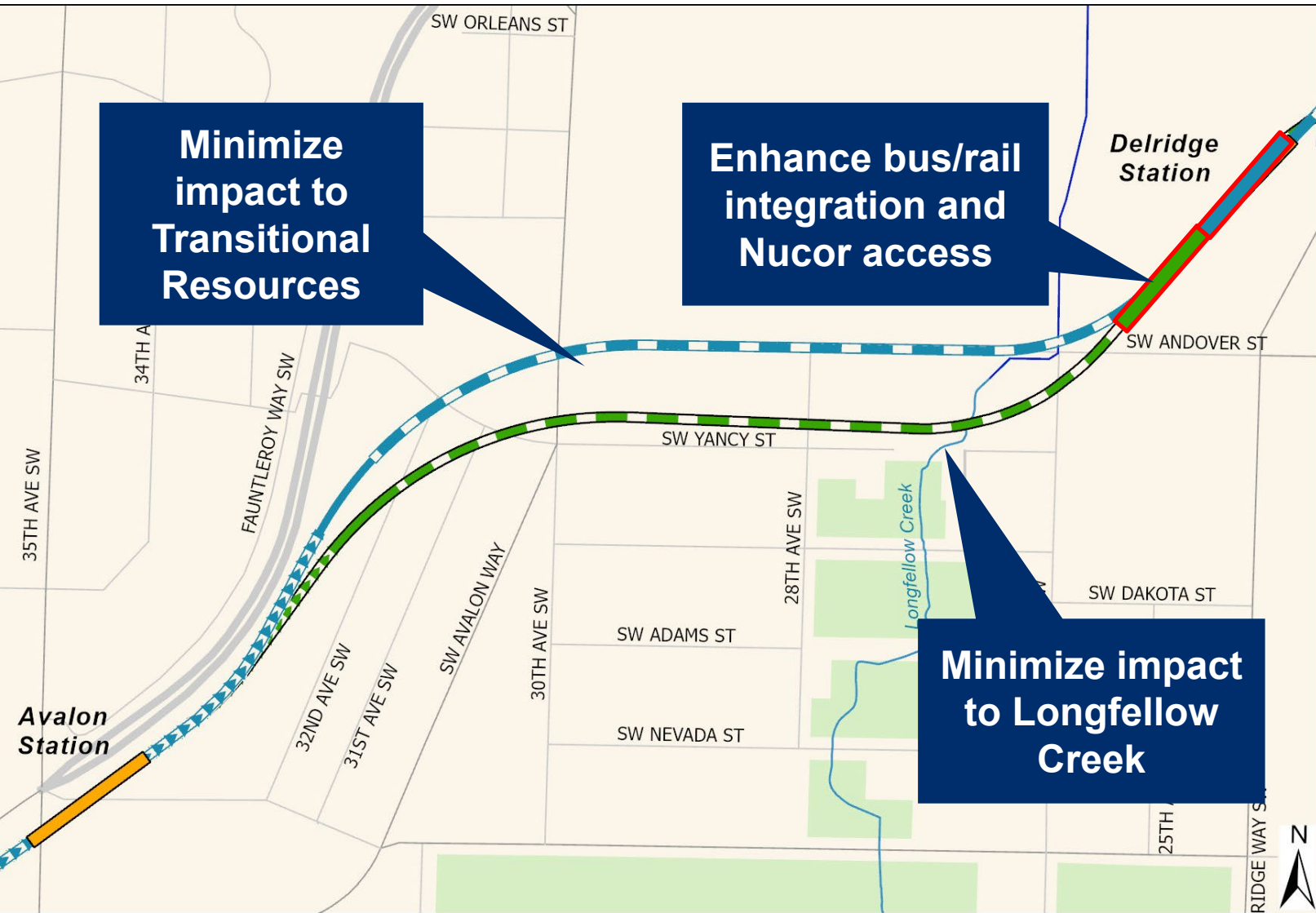
Medium Tunnel 41st

Draft EIS Alternative

← Shift station entrance
to 42nd

Status

1. Study overview
2. Initial concept
3. Interagency review
4. Refined concept
5. Summarize results



Andover Station refinement

↓ Shift station and alignment south

Status
1. Study overview
2. Initial concept
3. Interagency review
4. Refined concept
5. Summarize results

Status

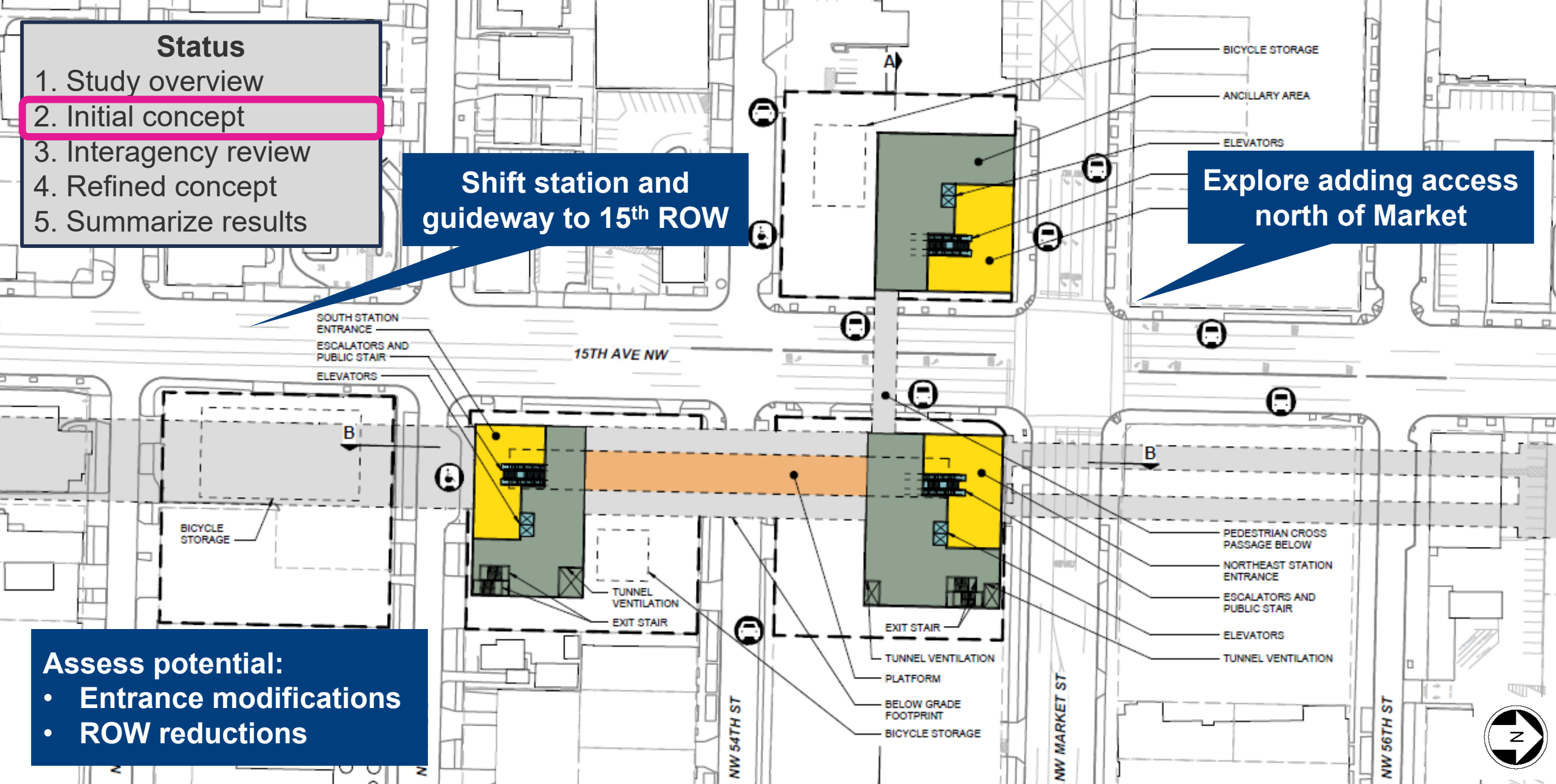
1. Study overview
2. Initial concept
3. Interagency review
4. Refined concept
5. Summarize results

Shift station and guideway to 15th ROW

Explore adding access north of Market

Assess potential:

- Entrance modifications
- ROW reductions



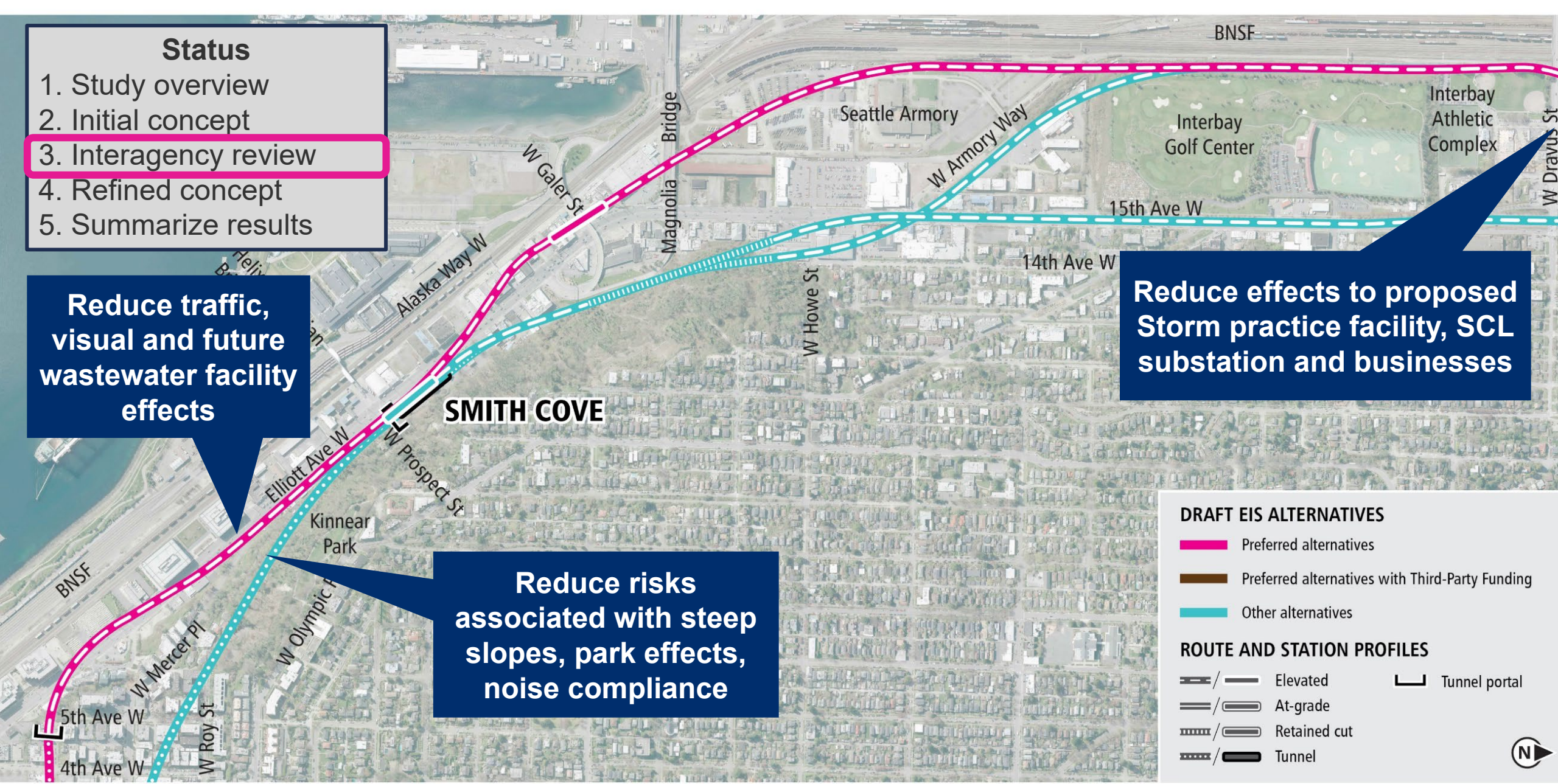
Status

1. Study overview
2. Initial concept
3. Interagency review
4. Refined concept
5. Summarize results

Reduce traffic, visual and future wastewater facility effects

Reduce risks associated with steep slopes, park effects, noise compliance

Reduce effects to proposed Storm practice facility, SCL substation and businesses



DRAFT EIS ALTERNATIVES

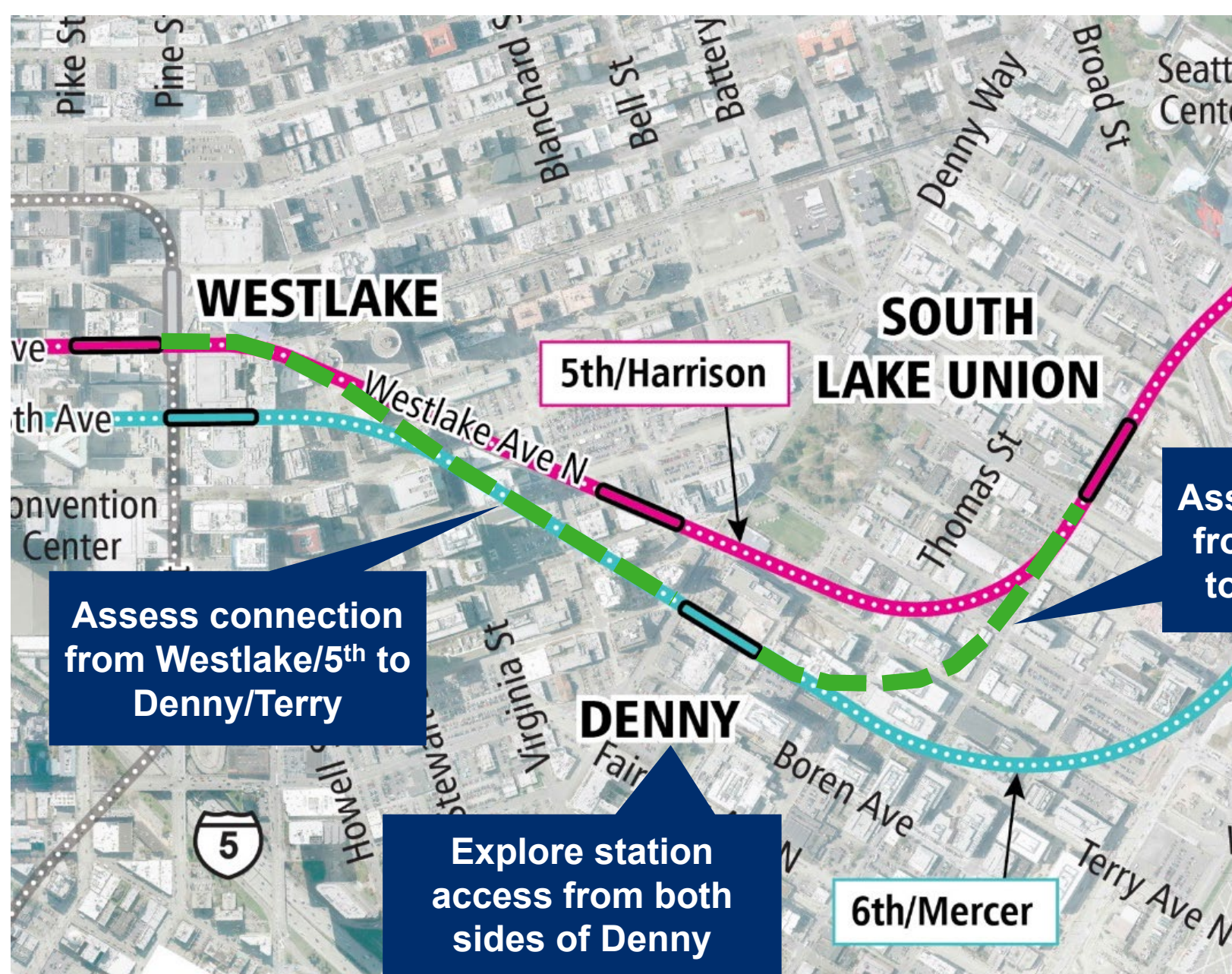
- Preferred alternatives
- Preferred alternatives with Third-Party Funding
- Other alternatives

ROUTE AND STATION PROFILES

- Elevated
- At-grade
- Retained cut
- Tunnel
- Tunnel portal

Mix-and-match

Westlake to Denny to SLU



Assess connection from Denny/Terry to SLU/Harrison

Assess connection from Westlake/5th to Denny/Terry





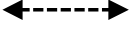
Explore station access from both sides of Denny

Status
1. Study overview
2. Initial concept
3. Interagency review
4. Refined concept
5. Summarize results

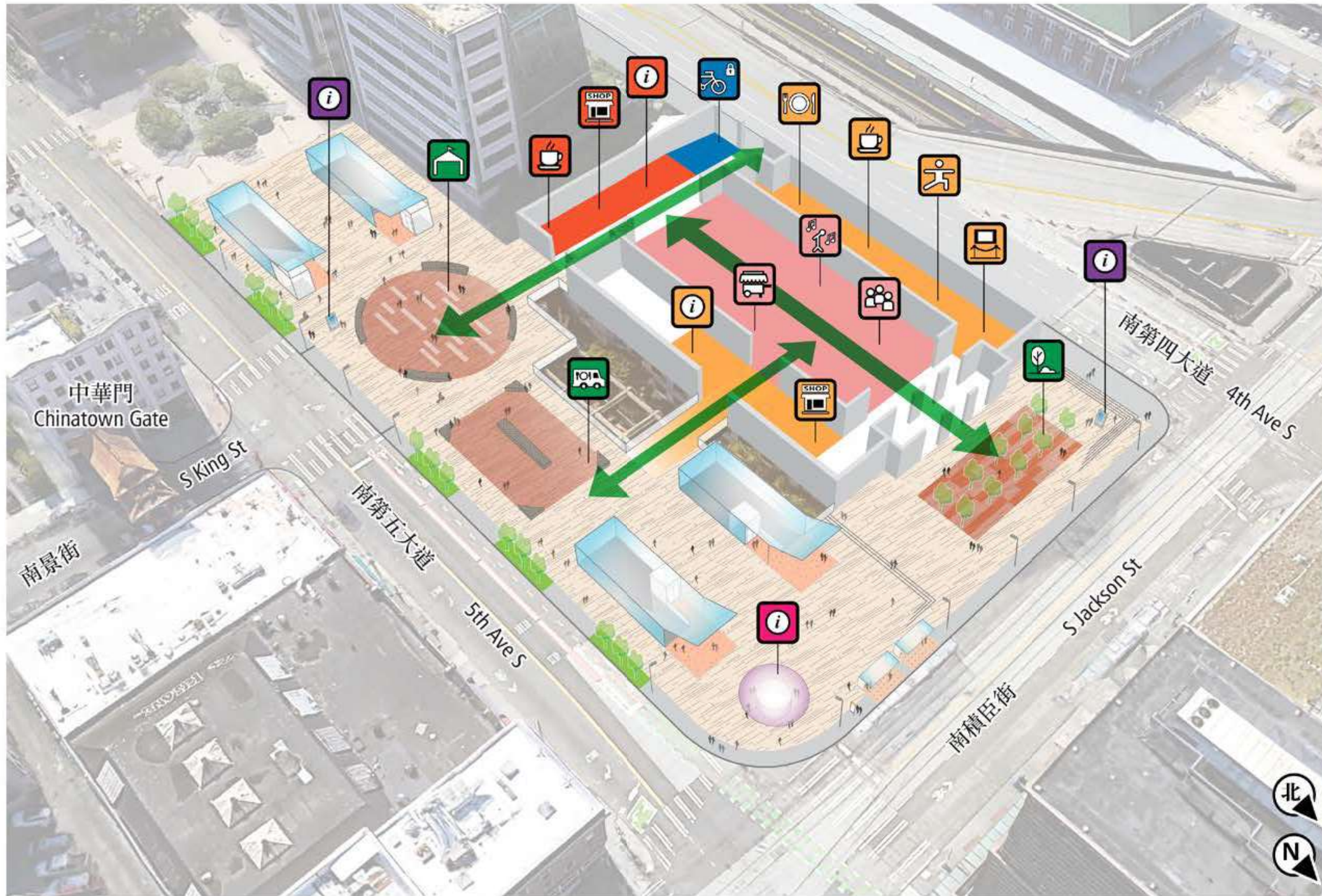
歷史悠久的車站樞紐和連接社區

Historic station hub and neighborhood connections



-  公共廣場 (現有的和潛在的)
Public plaza (existing and potential)
-  步行街 (現有的和潛在的)
Pedestrian-focused street (existing and potential)
-  公共公園
Public park
-  計劃的未來發展
Planned future development
-  重點步行路線
Key walking route

聯合車站和廣場的概念和用途 Union Station, plaza concept and uses



聯合車站內 Inside Union Station

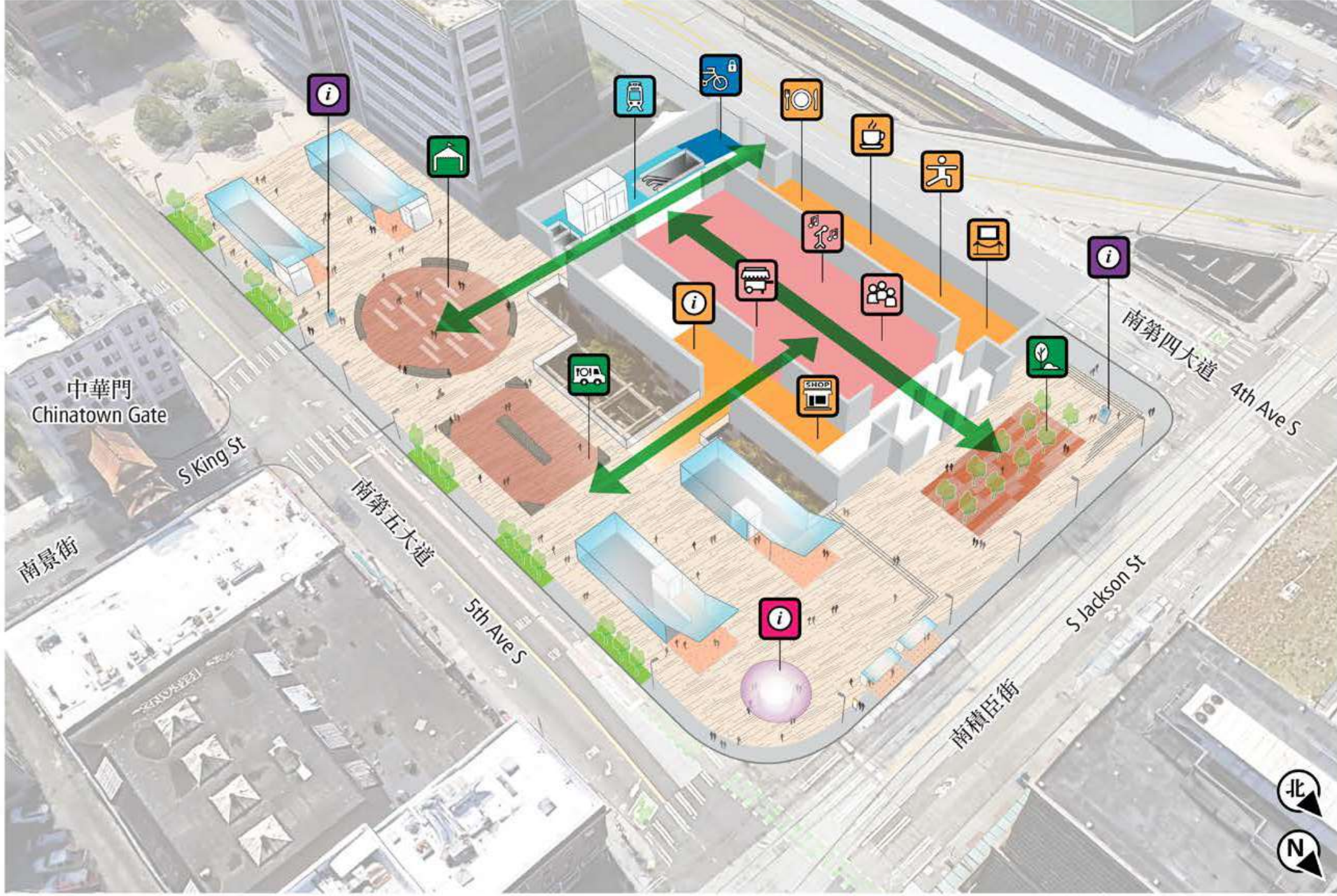
社區活動 Community events	餐廳 Dining
音樂/表演 Music/performance	小食/咖啡店 Cafe
零售/餐車 Vending/food carts	活動興趣班 Classes
公共單車存放處 Public bike storage	展覽廳 Gallery
交通詢問處 Transit info	快閃活動 Pop-ups
零售處 Retail	詢問處 Kiosk
小食/咖啡店 Cafe	

車站廣場 Station plaza

行人導向標示 Wayfinding	季節性市場/飲食/ 座位區 Seasonal market/ food/seating
公用廣場/ 園林景觀/藝術 Open plaza/ landscape/art	室外活動/表演/ 彈性空間 Events/performance/ flexible space
詢問亭(有當席人員) Kiosk (with staff)	

聯合車站和廣場的概念和用途 – 第四大道站出入口

Union Station, plaza concept and uses – with 4th Ave station entrance



聯合車站內 Inside Union Station

社區活動 Community events	餐廳 Dining
音樂/表演 Music/performance	小食/咖啡店 Cafe
零售/餐車 Vending/food carts	活動興趣班 Classes
公共單車存放處 Public bike storage	展覽廳 Gallery
第四大道車站出入口 4th Ave station entrance	快閃活動 Pop-ups
	詢問處 Kiosk

車站廣場 Station plaza

行人導向標示 Wayfinding	季節性市場/飲食/ 座位區 Seasonal market/ food/seating
公用廣場/ 園林景觀/藝術 Open plaza/ landscape/art	室外活動/表演/ 彈性空間 Events/performance/ flexible space
詢問亭 (有當席人員) Kiosk (with staff)	

定位活動

Locating activities

研討會二和三 定位活動

Workshop #2 & #3 Locating activities

聯合車站和廣場周邊活動構想
Union Station and plaza activation

活動 Events
“快閃”活動 Pop-ups

室內“快閃”活動
Indoor pop-ups
室內活動 Events

座位區 Seating

公共藝術 Public art
園林景觀 Landscaping

行人導向標示
Wayfinding

自行車停放區

室內座位區 Seating

公共藝術 Public art
園林景觀 Landscaping

座位區 Seating

公共藝術 Public art
園林景觀 Landscaping

座位區 Seating

Uwajimaya
Hing Hay Park
Chinatown Gate
5th Ave S
International District Chinatown Station
聯合車站 Union Station
4th Ave S
國王街 King Street Station
S Jackson St
Sounder 車站出入口 Sounder Station Entrance

構想的活動和地點是根據公眾參與的反饋，包括兩個研討會和網絡問卷。
Potential activities and locations are based on input from public engagement process including two workshops and online survey.

[] 聯合車站和廣場 Union Station and plaza area

SOUNDTRANSIT

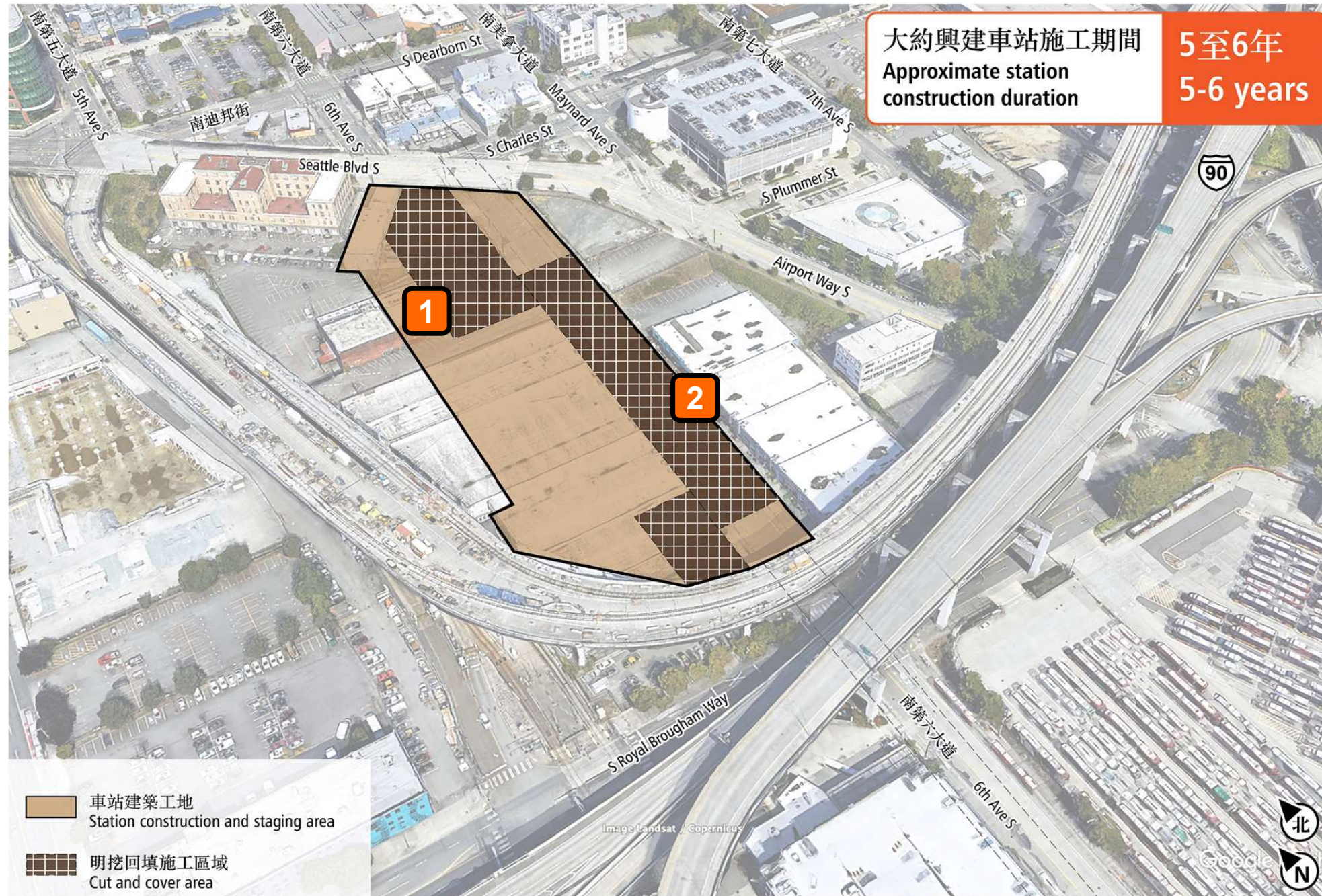
你希望在廣場上和聯合車站內設置以下的項目?
Where would you like to see these uses on the plaza and in the Union Station?

南鎮區街 St. Jackson St
國際區唐人街-國際區車站 International District/Chinatown Station
公共藝術 Public Art
園林景觀 Landscaping
座位區 Seating

SOUNDTRANSIT

CID唐人街/國際區以南車站: 施工時的影響

South of CID: construction effects



1 車站出入口和建築工地需要與任何未來的發展計劃互相協調
Station entrances and staging areas would need to be coordinated with any future development plans

2 與南第六大道的 16英寸高壓輸氣管線和計劃中的 SCL 高壓電力線存在潛在衝突
Potential conflict with 16" high pressure gas line and planned SCL high voltage power line on 6th Ave S

CID唐人街/國際區以南車站: 機遇與問題

South of CID: opportunities and issues



- 1** 連接到潛在的 *Sounder* 車站出入口和 *BNSF* 上的潛在行人天橋(合作夥伴關係)
Connection to potential *Sounder* Station entrance and potential ped bridge over *BNSF* (partnership)
- 2** 靠近CID唐人街/國際區的車站出入口和新的公共空間
Station entrance closer to CID with new public space
- 3** 重新配置街道/十字路口以改善流通和行人通道
Reconfigure street/intersection to improve circulation and pedestrian access

CID唐人街/國際區以南車站: 機遇與問題

South of CID: opportunities and issues



4 將車站出入口納入潛在的未來 eTOD, 提供經濟適用住房和零售

Incorporate station entrance into potential future eTOD with affordable housing and retail

5 激活連接公共空間、車站出入口和其他人的開發項目以激活的步行路線 (合作夥伴關係和潛在的 eTOD 機會)

Activate pedestrian route connecting public spaces, station entrance, and potential future development (partnership and potential eTOD opportunity)

6 通過充足的行人道和照明以改善體育場的連接

Improve stadium connection with ample sidewalks and lighting