



Seattle Design Commission Quarterly Briefing

West Seattle and Ballard Link Extensions (WSBLE)
City of Seattle Work Program

July 6, 2023

Purpose

Quarterly briefing to update the Seattle Design Commission on interdepartmental and interagency work on the West Seattle and Ballard Link Extensions (WSBLE) project

Agenda

1. WSBLE project summary
2. Interdepartmental ST3 City Team
3. 2023-2024 City Team Workplan Highlights
4. SDC / City Team Coordination



WSBLE Project Summary



West Seattle and Ballard Link Extensions (WSBLE) Project

At more than \$12 Billion, West Seattle and Ballard Link Extensions (WSBLE) project is the **largest infrastructure project in City history**—with tremendous opportunity for transformation, but also potential for significant construction and related impacts to existing communities.

The project includes:

- More than 12 miles of new light rail track
- 13 new or expanded stations
- New light rail-only downtown tunnel
- 2 water crossings



WSBLE Project Timeline



Voter approval (2016)

Planning, 2017 to 2023 WE ARE HERE

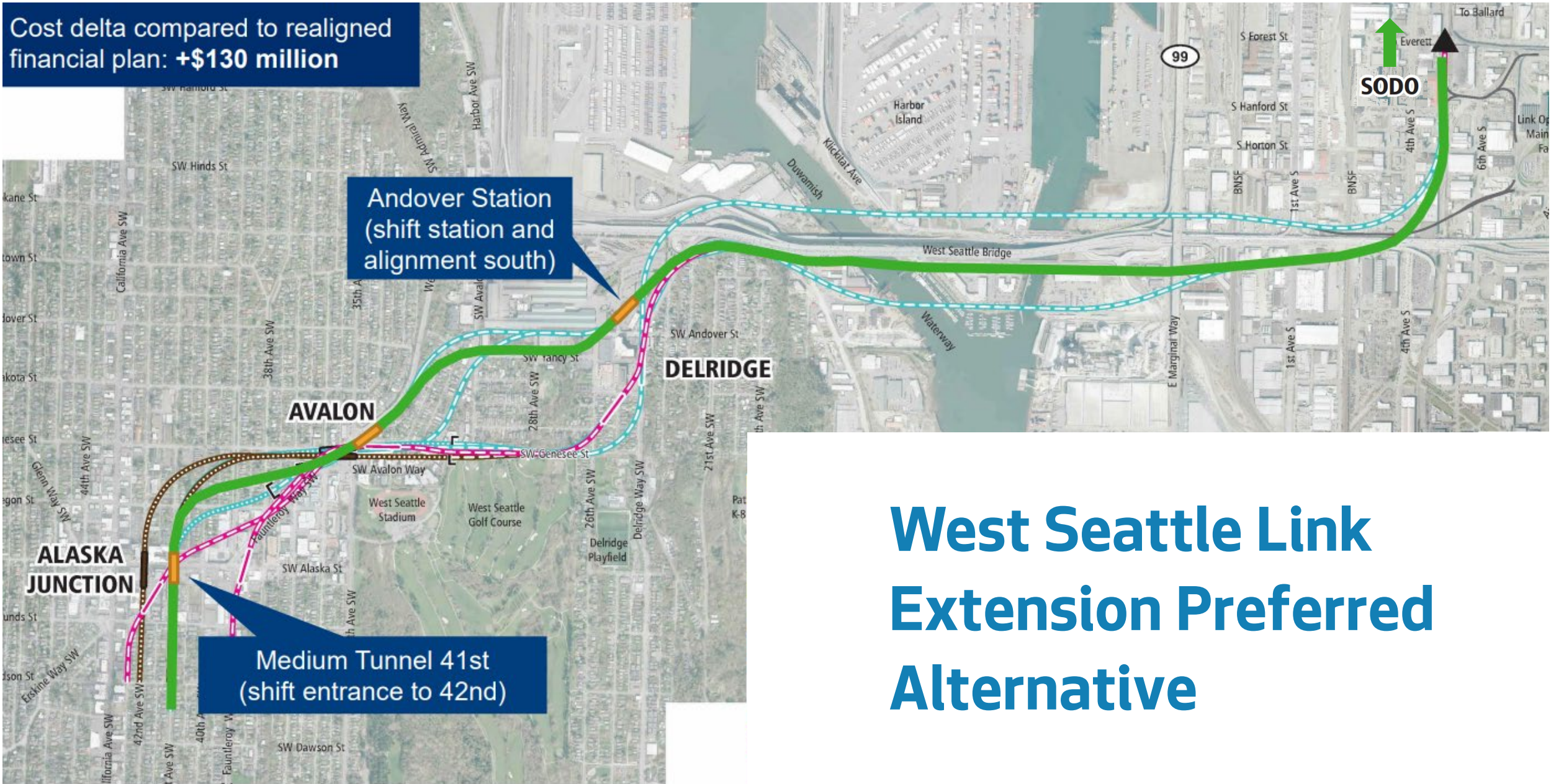
Design, 2023 to 2027*

Construction, 2026 to 2037-2039*

Start of service (West Seattle 2032; Ballard 2037-2039*)

- Draft EIS* ☑
- Board modifies Preferred Alternative* 2022-23
- WSLE Final EIS, Board Action, ROD* 2024
- City Council legislation on WSLE* TBD
- BLE 2nd Draft EIS* TBD
- BLE Final EIS, Board Action, ROD* TBD
- City Council legislation on BLE* TBD

Cost delta compared to realigned financial plan: **+\$130 million**



West Seattle Link Extension Preferred Alternative

Cost delta compared to realigned financial plan: **+\$150 million**

Shifted Interbay Dravus

Ballard 15th Cost Savings

Smith Cove Galer

Seattle Center: Republican West

Westlake Station: Entrance Consolidation

CID South

SLU Harrison

Denny Westlake Cost Savings

CID North

Ballard Link Extension Preferred Alternative

Refinements to preferred alternatives for the Denny and SLU stations under consideration

Interdepartmental ST3 City Team



City Roles

The City has many roles to help plan, permit, and deliver WSBLE:

- *Governing* roles through Sound Transit Board membership
- *Regulatory* roles defined by statute/code, especially permitting
- *Partnering* roles defined by administrative agreements including the 2018 Partnering Agreement
- *Advocacy* roles as interested party to promote City and community priorities through activities including environmental review, community engagement, RET
- *Investing* roles to design and deliver access projects, and contribute to 3rd party funding for select elements of the system itself



WSBLE Partnering Agreement between Sound Transit and the City of Seattle

Underscores commitment to partnerships, community engagement, collaboration, transparency and accountability;

Applies innovative ideas and lessons learned to refine and improve project development and delivery;

Supports seamless project management through all project phases; and

Identifies role of single designated representative for each party.

**PARTNERING AGREEMENT BETWEEN
THE CENTRAL PUGET SOUND REGIONAL TRANSIT AUTHORITY (“SOUND TRANSIT”)
AND THE CITY OF SEATTLE FOR THE
WEST SEATTLE AND BALLARD LINK EXTENSIONS PROJECT**

THIS PARTNERING AGREEMENT (“Agreement”) is between the Central Puget Sound Regional Transit Authority, a regional transit authority organized under Chapter 81.112 RCW (“**Sound Transit**”), and the City of Seattle, a Washington municipal corporation (“**City**”), for the purposes set forth below. Sound Transit and the City are collectively referred to hereafter as “the Parties” or individually as a “Party.”

WSBLE Joint City-Sound Transit Racial Equity Toolkit

- Advance **environmental and economic justice** to improve economic and health outcomes for communities of color;
- **Enhance mobility and access** for communities of color and low-income populations;
- Create **opportunities for equitable development** that include expanding housing and community assets for communities of color;
- Avoid disproportionate impacts on communities of color and low-income populations;
- Create a **sense of belonging for communities of color at all stations**, making spaces where everyone sees themselves as belonging, feeling safe, and welcome; and
- **Meaningfully involve** communities of color and low-income populations in the project.

RET-identified priorities

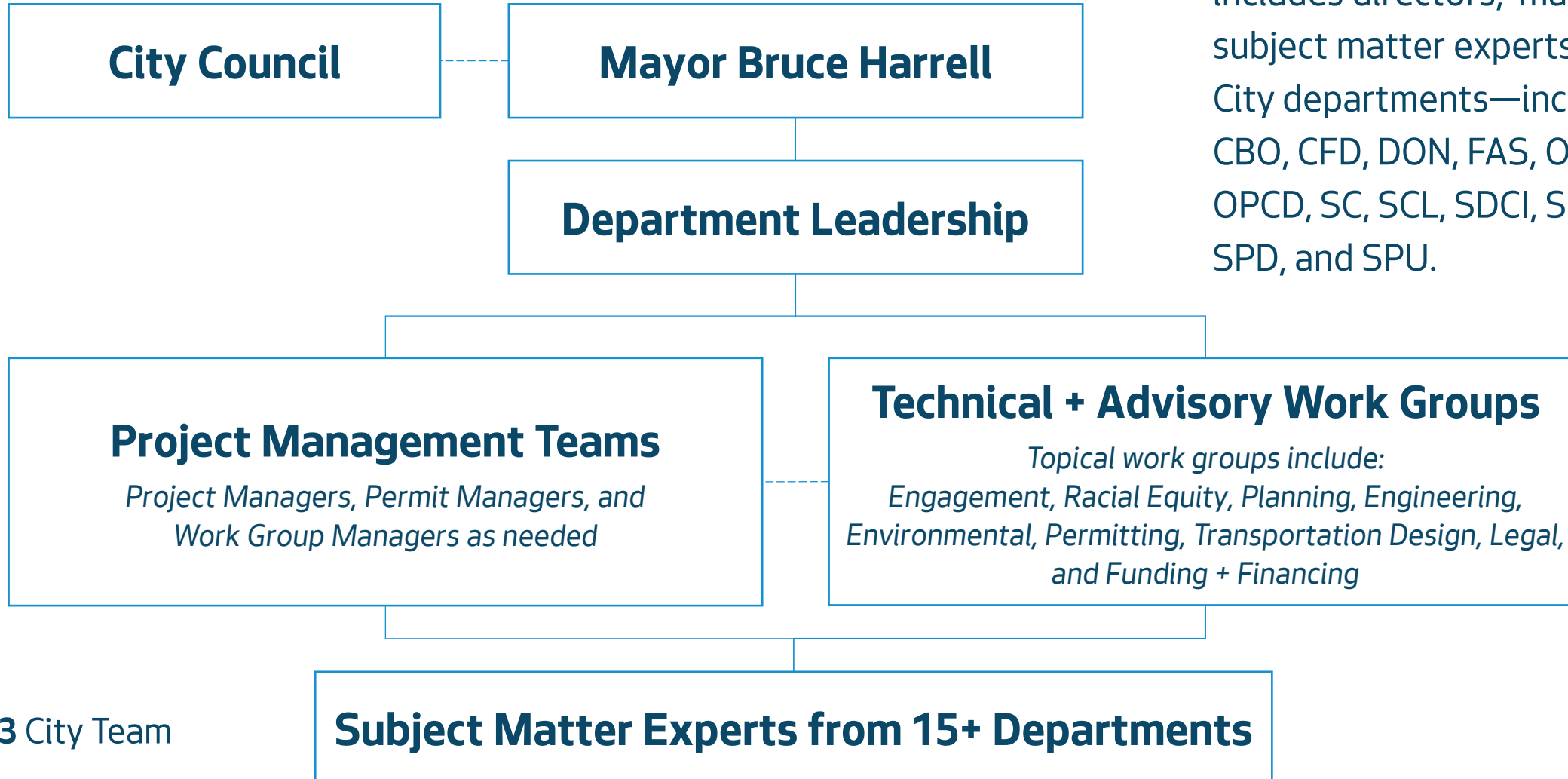
Chinatown/International District: Limit harmful impacts, maximize connections for all users, and develop and implement 100-year vision for the station

Delridge: Connect communities to the south through transit integration at the station, and promote equitable transit-oriented development that serves the community

ST3 City Team

Matrixed Program Structure

The **ST3 City Team**, led by SDOT's Sound Transit Program with direction from the City of Seattle's ST3 Designated Representative, includes directors, managers, and subject matter experts across 15+ City departments—including CAO, CBO, CFD, DON, FAS, OED, OH, OIR, OPCD, SC, SCL, SDCI, SDOT, SFD, SPD, and SPU.



ST3 City Team's Matrixed Leadership

Workgroups or Teams	City Department or Division
Project Management, Engineering Work Group, Environmental Work Group, Engagement Work Group	SDOT Sound Transit Program
Racial Equity Work Group	SDOT Office of Equity and Economic Inclusion
Permitting Work Group	SDOT Street Use + SDCI
Planning Work Group	OPCD + SDOT Project Development Division
Funding and Finance Work Group	City Budget Office + City Finance Division
Transportation Design Team	SDOT Project Development Division
Intergovernmental Relations	Office of Intergovernmental Relations
Legal Issues	City Attorney's Office

In addition, several departments (including DON, Seattle Center, SCL, SPR, SPU) have identified ST3 staff leads.

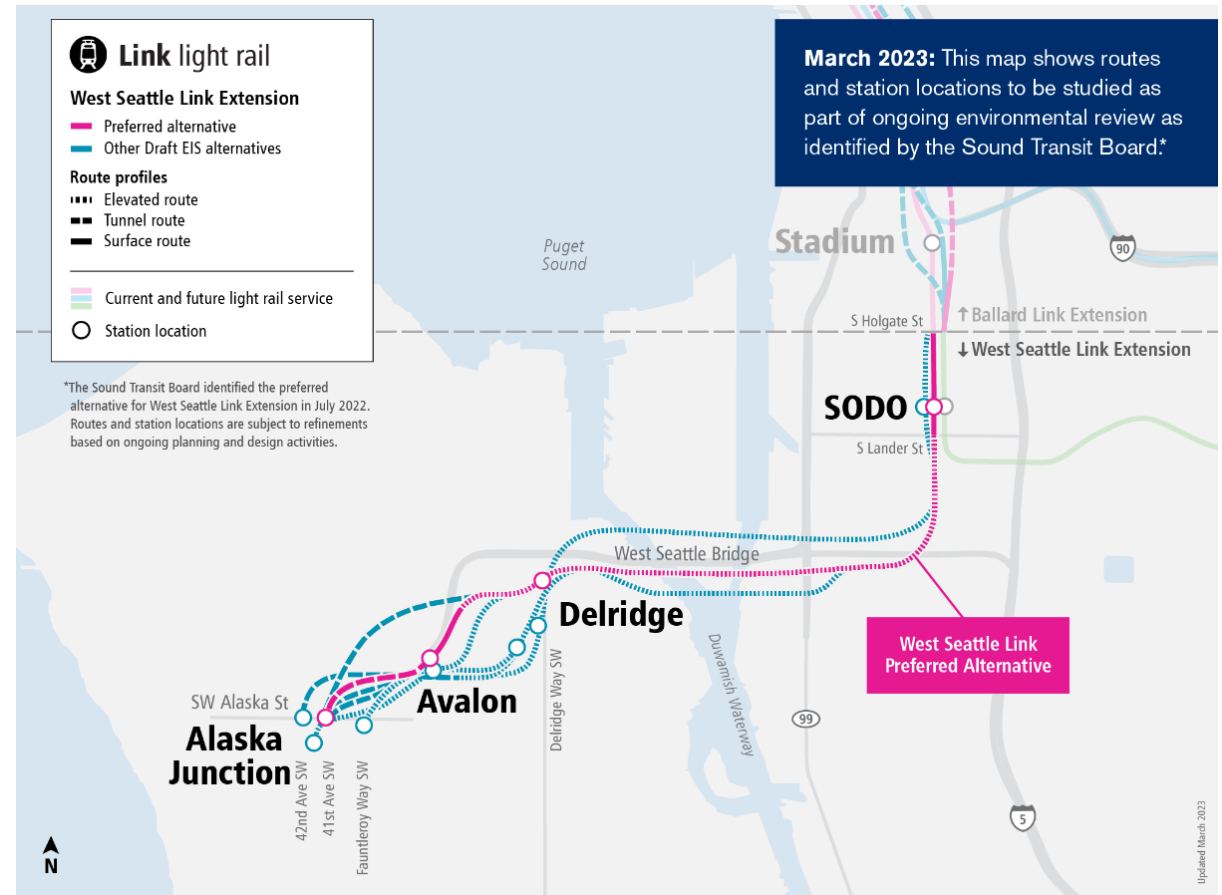
Focus Areas for 2023-2024



2023-2024 City Team Workplan Highlights

Project Management:

- West Seattle Link Extension: Support preliminary engineering and interdisciplinary design to prepare for FEIS, ROD, and permit submittal
- Ballard Link Extension: Further studies and impacts analysis to prepare for DEIS, PE, and Design



2023-2024 City Team Workplan Highlights

Technical Work Groups:

- Planning: Station context planning, including station design, non-motorized access, and TOD
- Engineering: Concurrence on key engineering topics
- Transportation Design: Construction mitigation, ROW design
- Environmental: EIS analysis methods, documenting key impacts, and mitigation
- Permitting: Code amendments, Permit streamlining through the Permitting Plan
- Funding + Finance: Third party funding strategy



From Station Planning Progress Report, 2022

2023-2024 City Team Workplan Highlights

Foundational Advisory Work Groups:

- Engagement: Ensuring all project management and technical analysis is informed by meaningful community engagement
- Racial Equity: Integrating the RET and the Transportation Equity Framework to build transparency and accountability to equitable outcomes



Racial Equity Toolkit Report:
Environmental Review Phase



2023-2024 City Team Workplan Highlights

Sample of station-specific efforts:

- Denny + SLU: Explore refinements to the preferred alternatives for Denny and SLU
- CID: Explore community-requested access and public realm improvements and development opportunities, to inform community benefits
- Delridge: Support station planning and engagement to advance RET outcomes
- Seattle Center: Support station and access planning for major events and monitor impacts to public assets and organizations




From Sound Transit Board Presentation, 2023, access improvement concepts to support integration between the existing IDS station and BLE alternatives for North of CID and South of CID stations

2023-2024 City Team Workplan Highlights

City Legislation following the ROD

- Amend the Transit Way Agreement
- Adopt the project to be built to allow project permitting
- Amend City codes and regulations to facilitate permitting process and advance City or community priorities
- Enact station area overlays or other tools to support longer-term station area planning



A blue-tinted photograph of a light rail train on an elevated track. The train is moving from left to right. The front car has a destination sign that reads "OF WASHINGTON". The train is white with blue accents. Overhead power lines and support structures are visible above the train. The background shows a blue sky with some clouds. The entire image has a blue color overlay.

Seattle Design Commission and ST3 City Team Coordination

Near Term Briefing Schedule

What additional information would the SDC like us to bring next time?

The ST3 City Team will provide quarterly briefings to the Seattle Design Commission on the City's work plan, and support deeper dive discussions on other WSLE and BLE topics.

Date	Topic	Presenter
July 6 (today)	Quarterly briefing on City WSBLE Work Program	City of Seattle
July 20	Project review process tools	City of Seattle & Sound Transit
October	Quarterly briefing on City WSBLE Work Program	City of Seattle

Possible Topics for Future Briefings

- Designing and funding station access and public realm improvements
- Developing code amendments to streamline the permit process and further community and City priorities
- Promoting equitable outcomes through the Racial Equity Toolkit and Transportation Equity Framework
- Planning for station design and user experience (e.g., Design Guidelines)
- Planning for equitable TOD in station areas
- Updating Board policies for Technical Advisory Group recommendations (e.g., defining betterment policy)

Thank you!

Contact

- Elliot Helmbrecht, ST3 Designated Representative, Mayor's Office
- Sara Maxana, Sound Transit Program Director, SDOT
- Vera Giampietro, WSBLE Project Manager, SDOT

