

Northgate Station Update

Light Rail Review Panel Briefing

May 16, 2013



Northgate Station Update



- LRRP reviewed 60% design in Nov.
- Significant progress made with partner agency staff to advance Northgate Station design work
- UDF update
- TOD plans update
- I-5 bridge and cycle track update

Northgate – Prior ST Board Actions

- Northgate Link project was baselined in June 2012
- Key components of Board action for Northgate included:
 - endorsement of integrated access plan
 - approved Motion No. M2012-42 which requested access study and committed \$10m contribution for I-5 pedestrian bridge and other ped and bike improvements (matched by City of Seattle)
 - parking mitigation plan to construct shared-use parking garage
 - replaces displaced park-and-ride and mall customer parking
 - allows KCM to develop surface lots into TOD sites

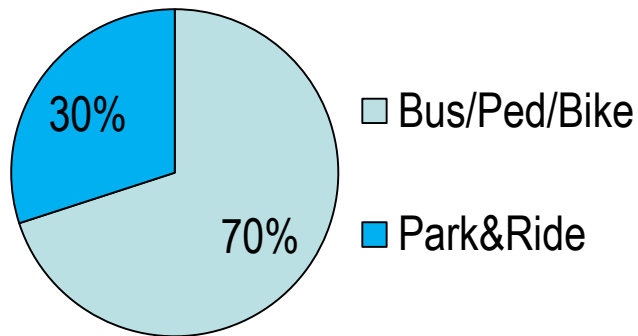
Northgate Station – Integrated Access Plan

Goal: improve access to Northgate Station by all modes

- Integrated access modes include:
 - Link rail system
 - pedestrian and bike access
 - Metro and ST bus service
 - future TOD project connections
 - passenger drop-off and pick-up zones
 - park-and-ride facilities

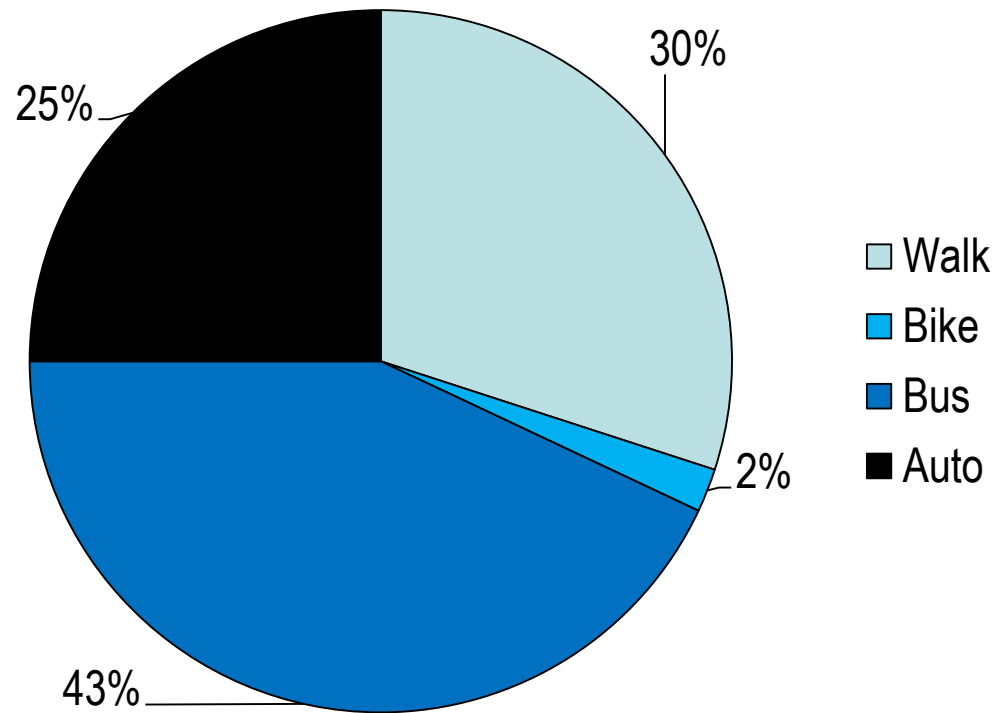
Large Ridership Growth at Northgate

2012 Access Modes



Based on 2012 KCM rider data analysis – **5,000 daily boardings** at Northgate Transit Center

2030 Access Modes

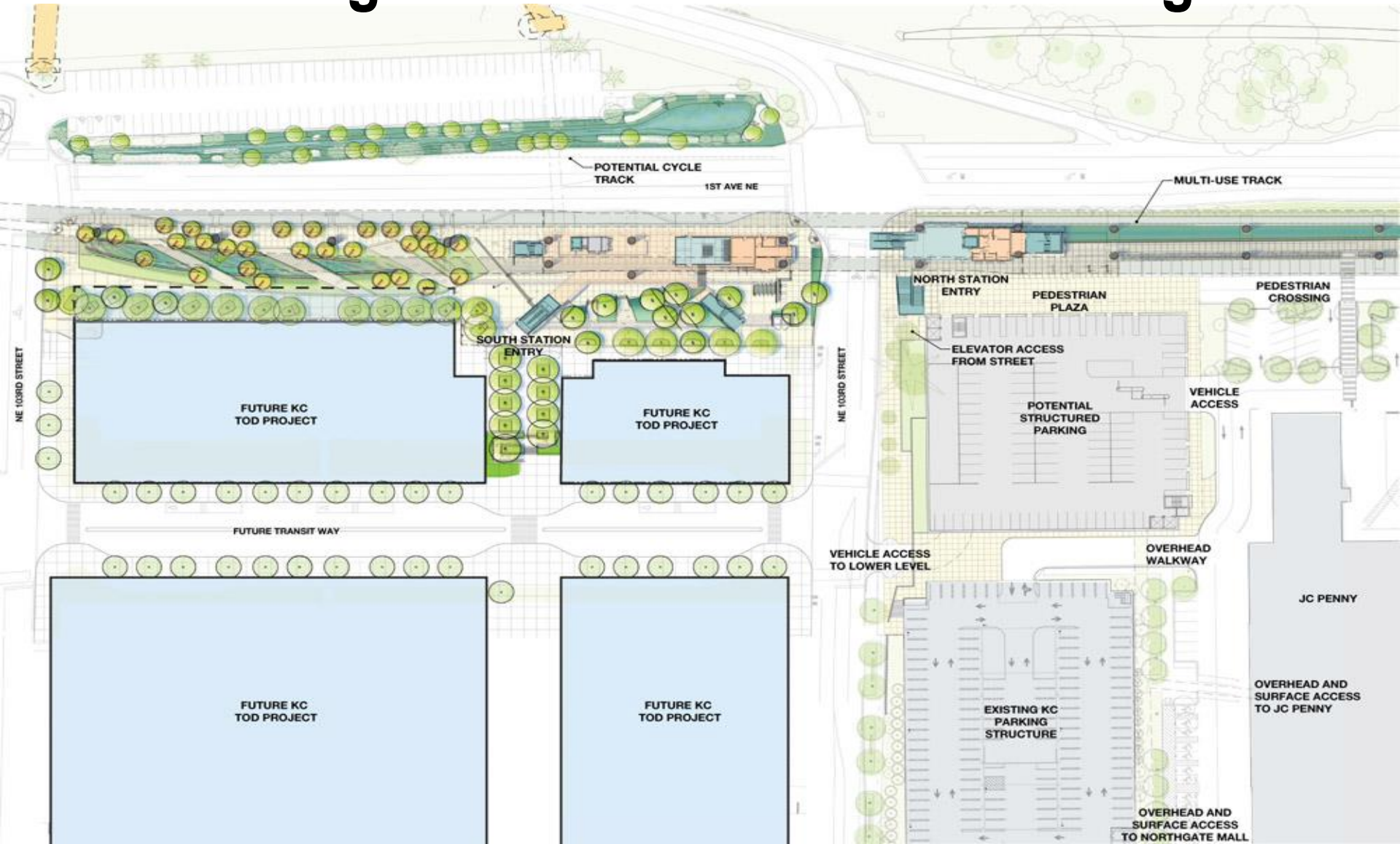


Based on 2030 ridership forecast of **15,000 daily boardings** at Northgate Station, PM peak period access data

Northgate Executive Steering Committee

- Committee of senior managers from KCM, City of Seattle, and ST formed in 2011 to offer guidance on Northgate issues:
 - ST station design and construction issues
 - KCM Transit Center redesign plans
 - HUD Sustainable Communities grant activities including urban design study and KCM TOD plans
- Goals of Committee:
 - fully integrated inter-modal transit facilities
 - timely implementation of TOD plans
 - maintain/achieve ridership goals during and after station and TOD development

Northgate Station - Initial 60% Design



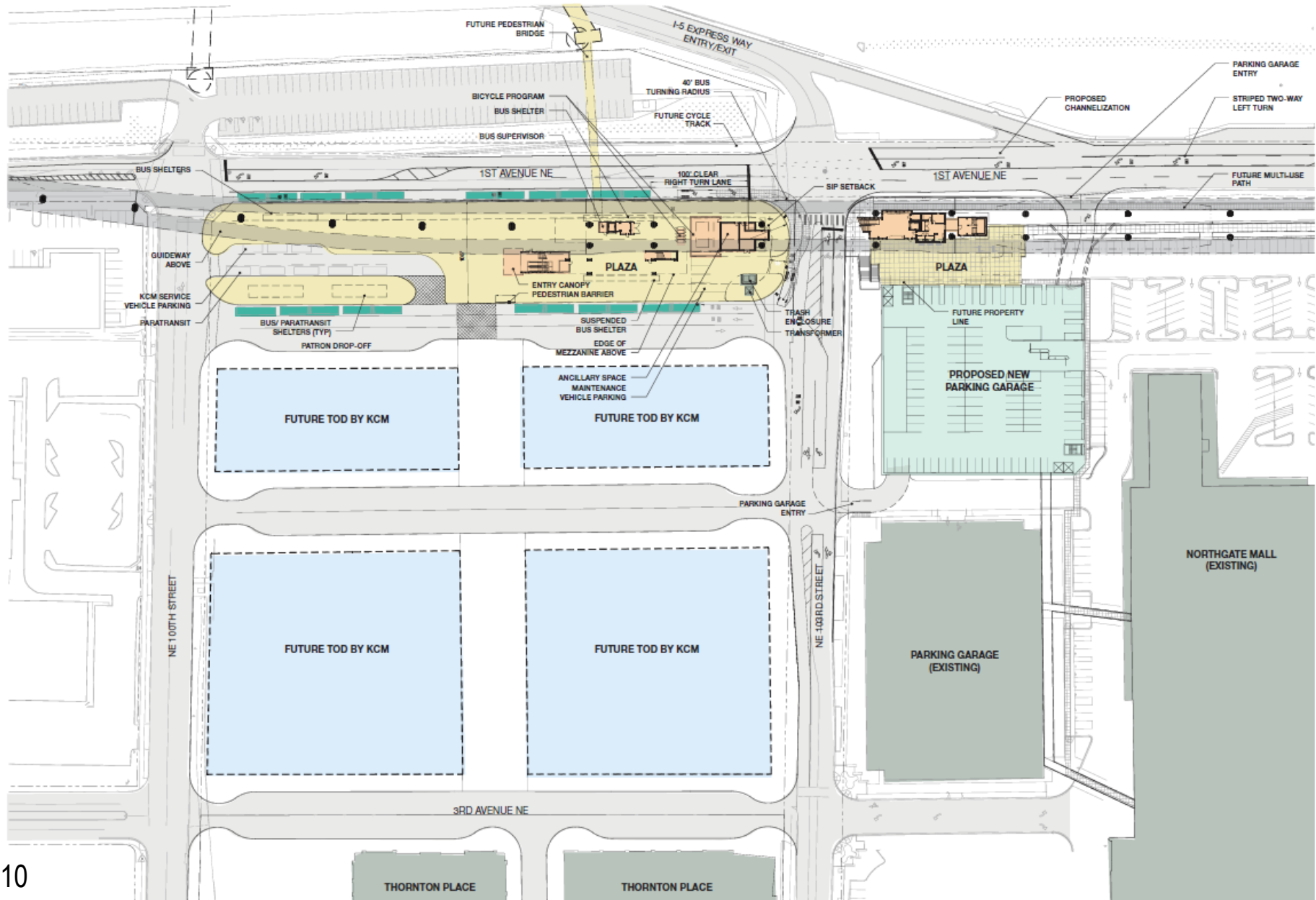
Northgate Station Design Update

- ST suspended design on Northgate Station to work through TOD site, transit operation and traffic issues with KCM, City and WSDOT staff
- Staff and consultants held design workshop on March 13th and other follow-on work sessions to resolve issues
- Steering Committee endorsed design and traffic solutions at April 1st meeting
- ST design team restarted work in preparation for May design review meetings

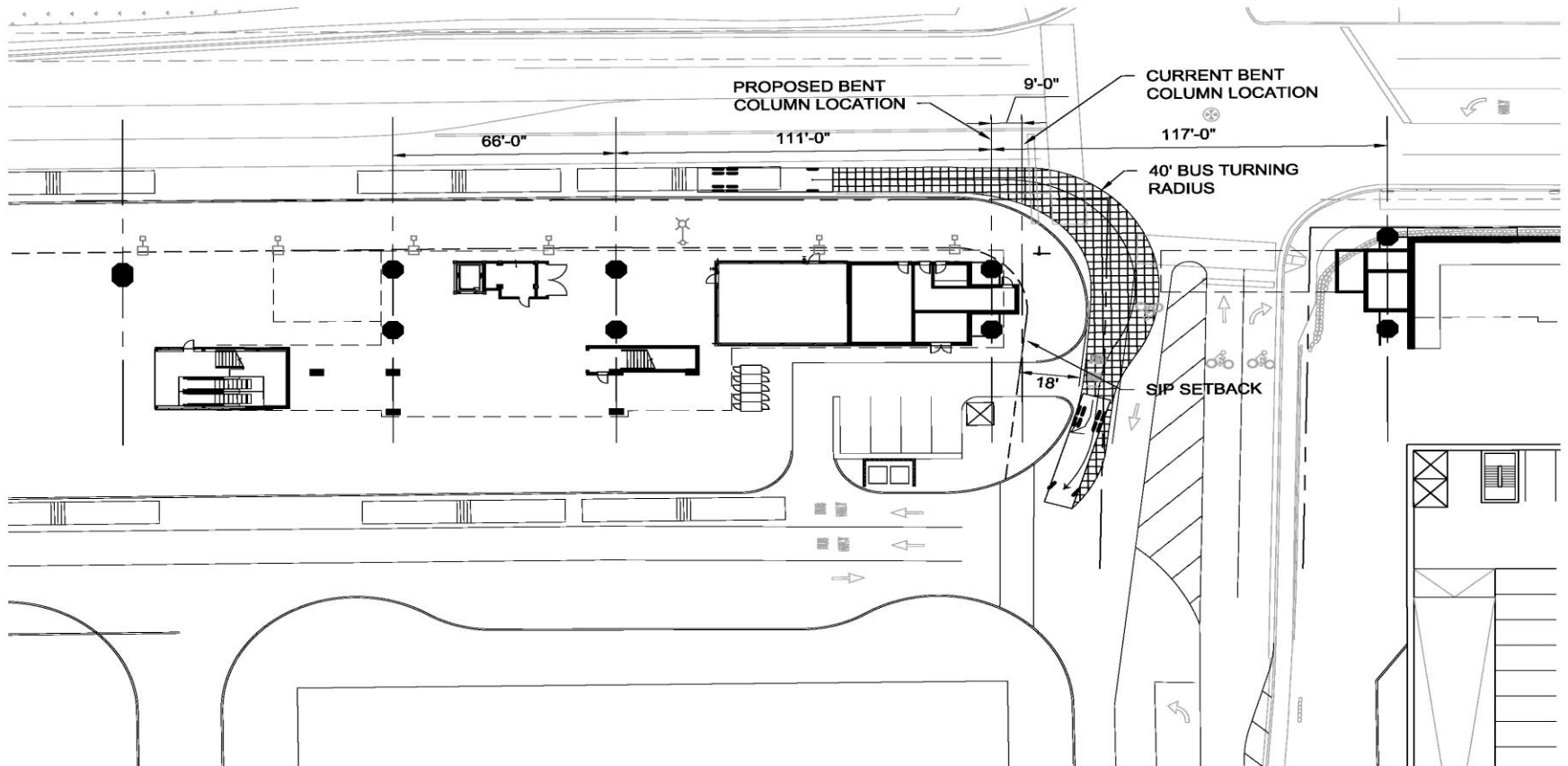
Issues Addressed

- Bus turning movements at north end of Transit Island
- 1st Avenue design and capacity
- Southbound transit street design and operation
- Access to joint use parking garage
- Work focus:
 - address pedestrian/bike safety concerns
 - improve intersection traffic operations to ensure more reliable bus operations

Northgate Station – New Concept



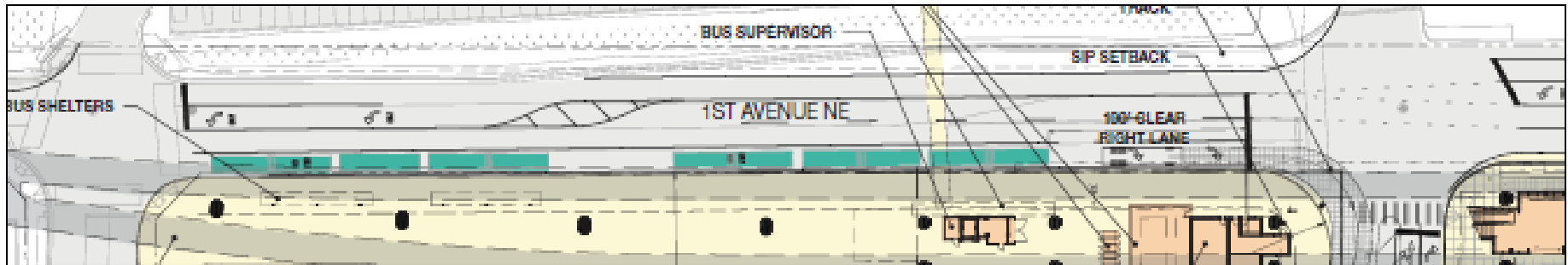
Transit Island North End Geometry



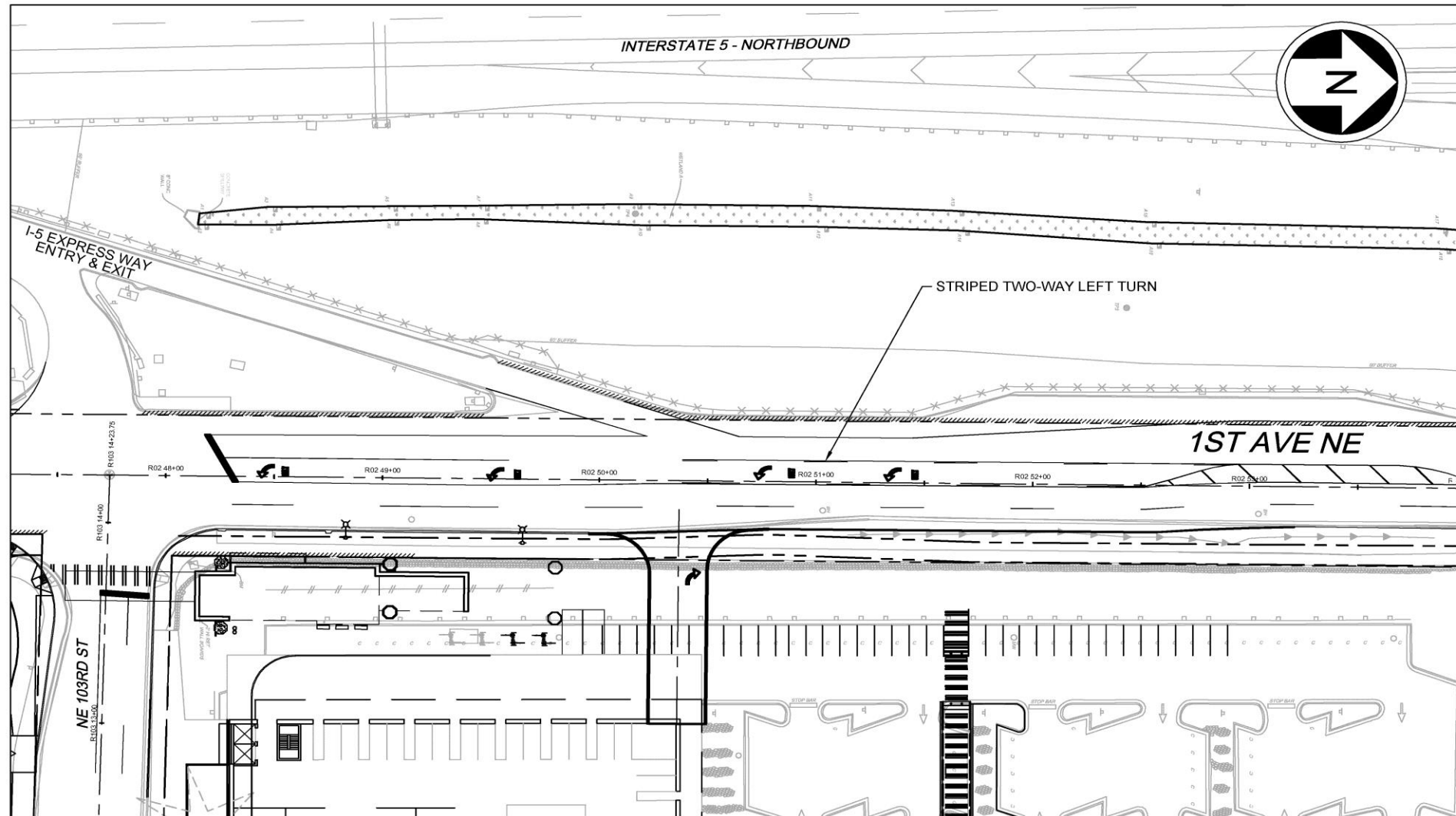
Northgate Link
March 25, 2013

1st Ave NE Channelization

- Congested roadway operations were modeled and refined
- Extended second northbound approach lane at NE 103rd
- Turn lanes and bus zones adjusted to enhance traffic flow
- Pedestrian and bike crossing volumes accommodated



Additional Garage Access



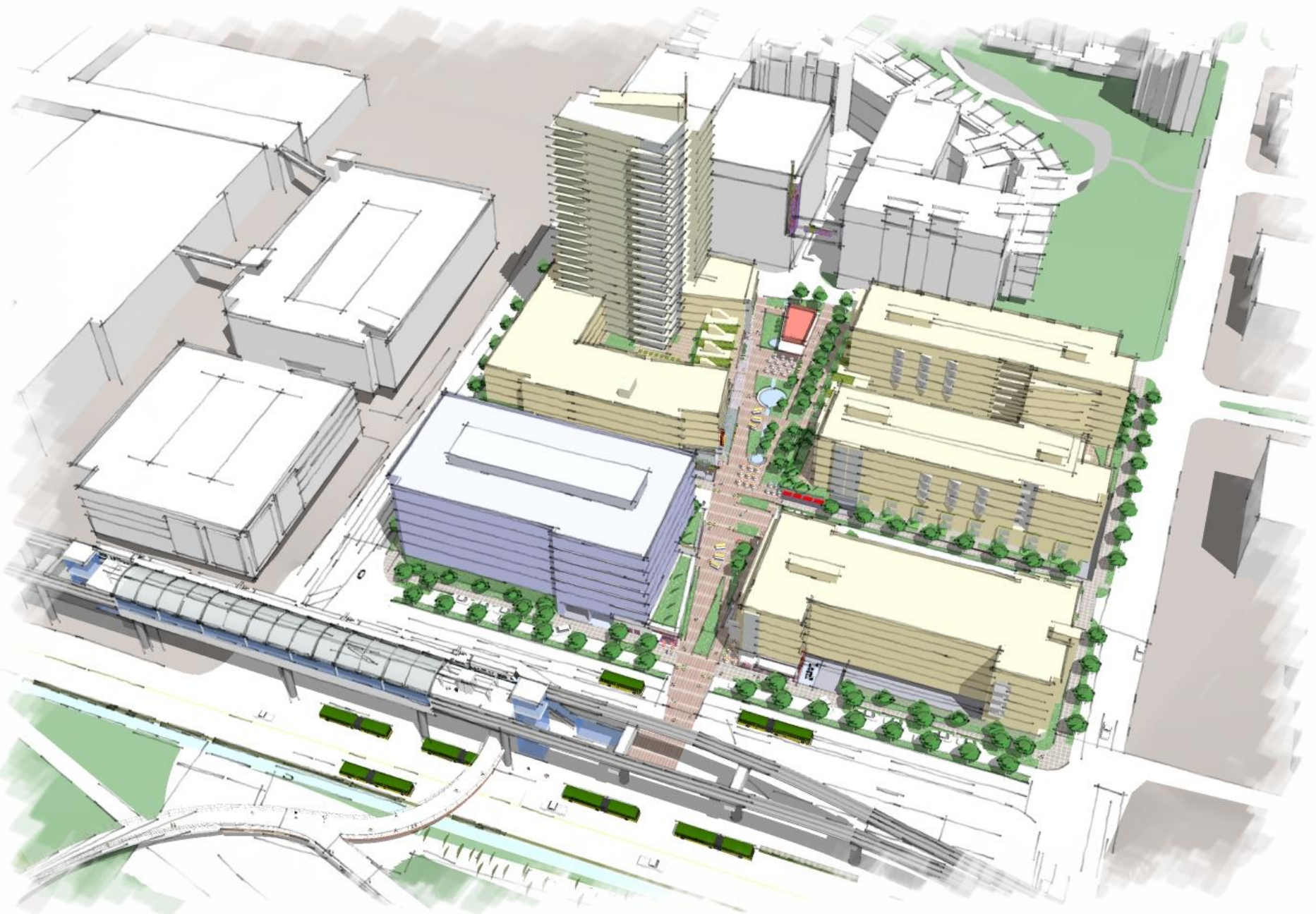
J:\160199P_NorthLinkFinalDesign\CADD\TRAF\MSC\N160 DRIVEWAY AT NORTHGATE.dwg Mar 27, 2013 - 12:29pm

Northgate Parking Garage Update

- Discussions continue with Simon Property Group (SPG), Northgate Mall owners
- Draft property appraisals completed; SPG review underway
 - staging area property lease and permanent easement acquisition
 - 40 year lease of 450 stalls in shared-use garage to be built by SPG
- ST also seeking short-term lease of surface parking at mall to meet WSDOT parking replacement requirements until new garage is available (145 stalls)

Urban Design Framework Update

- City is reviewing and editing preliminary draft of UDF
- Themes: circulation, public amenities, and future development concepts for Urban Center and TOD sites next to station
- Will continue working with King County, Sound Transit, Puget Sound Regional Council through end of 2013
- City's public outreach schedule for UDF anticipates:
 - June/July: meeting with community councils
 - July: open house on Draft UDF in Northgate
 - July-August: on-line survey



I-5 Bridge and Cycle Track Update

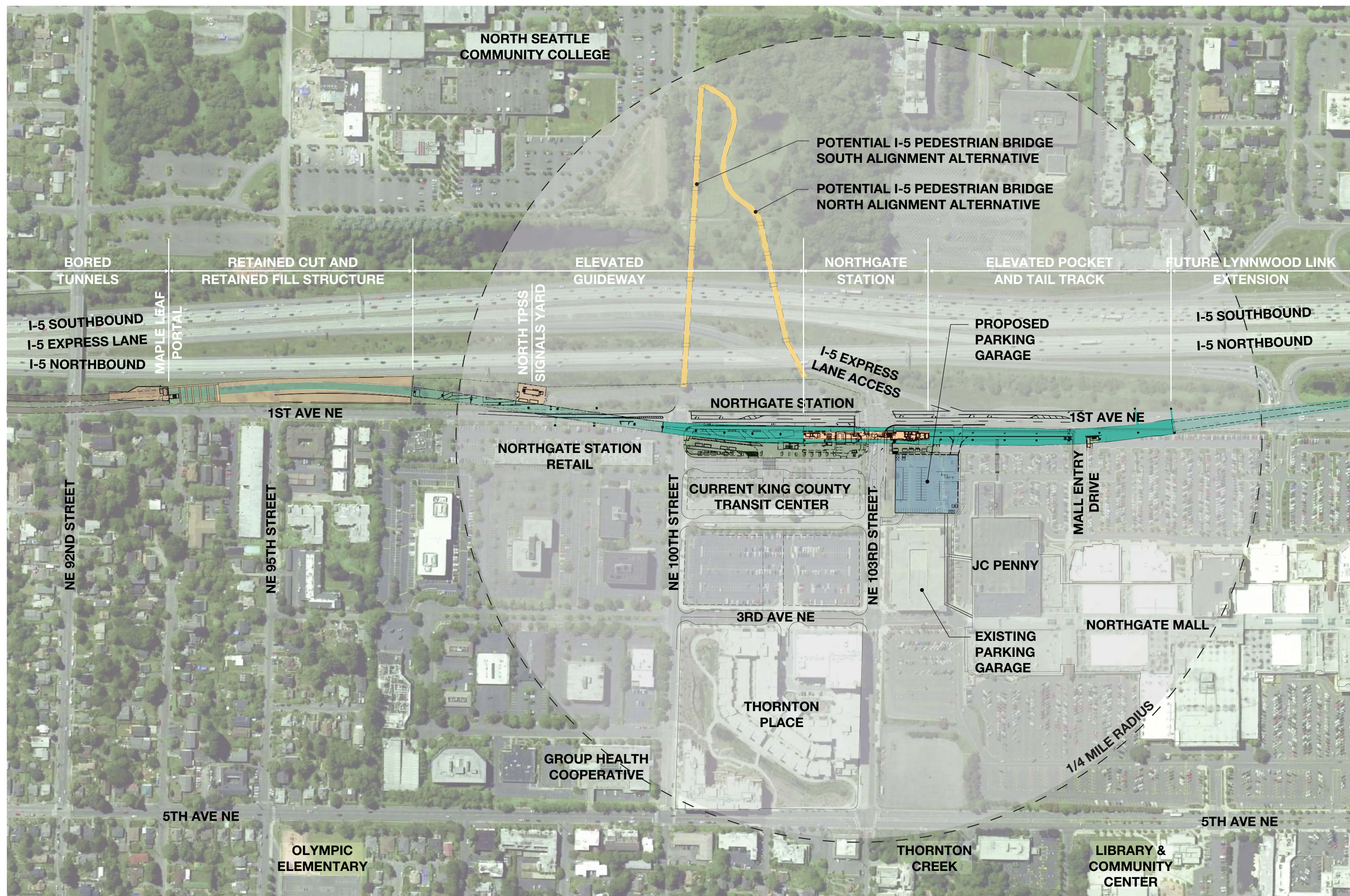
- SDOT lead for both proposed facilities
- Bridge and cycle track are consolidated in one project
- Consultant selection is ongoing
- Conceptual design and environmental clearance expected by year end

Northgate Station - Next Steps

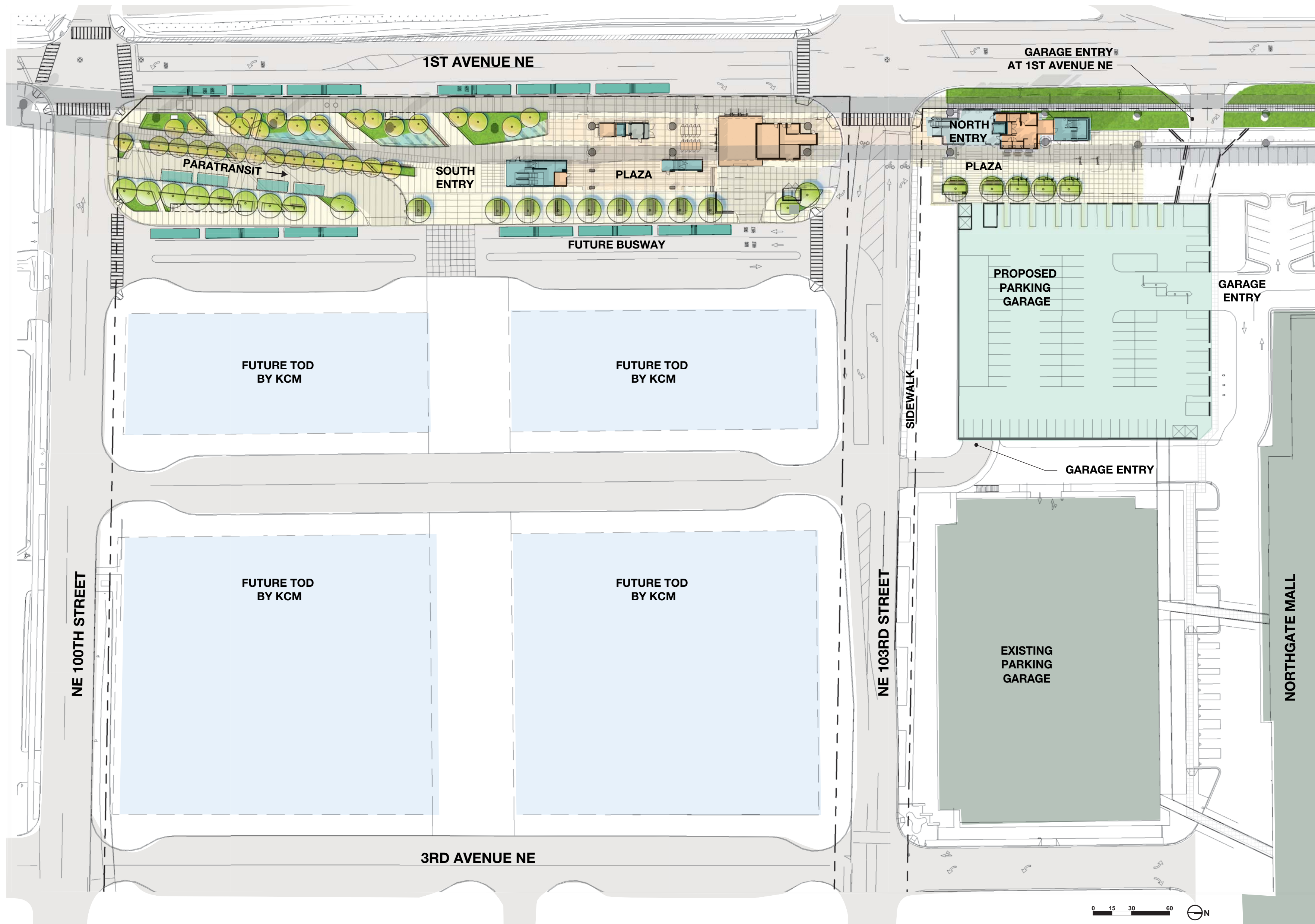
- Northgate Station 60% design reviews underway
 - Light Rail Review Panel meeting today
 - public open house on May 23rd

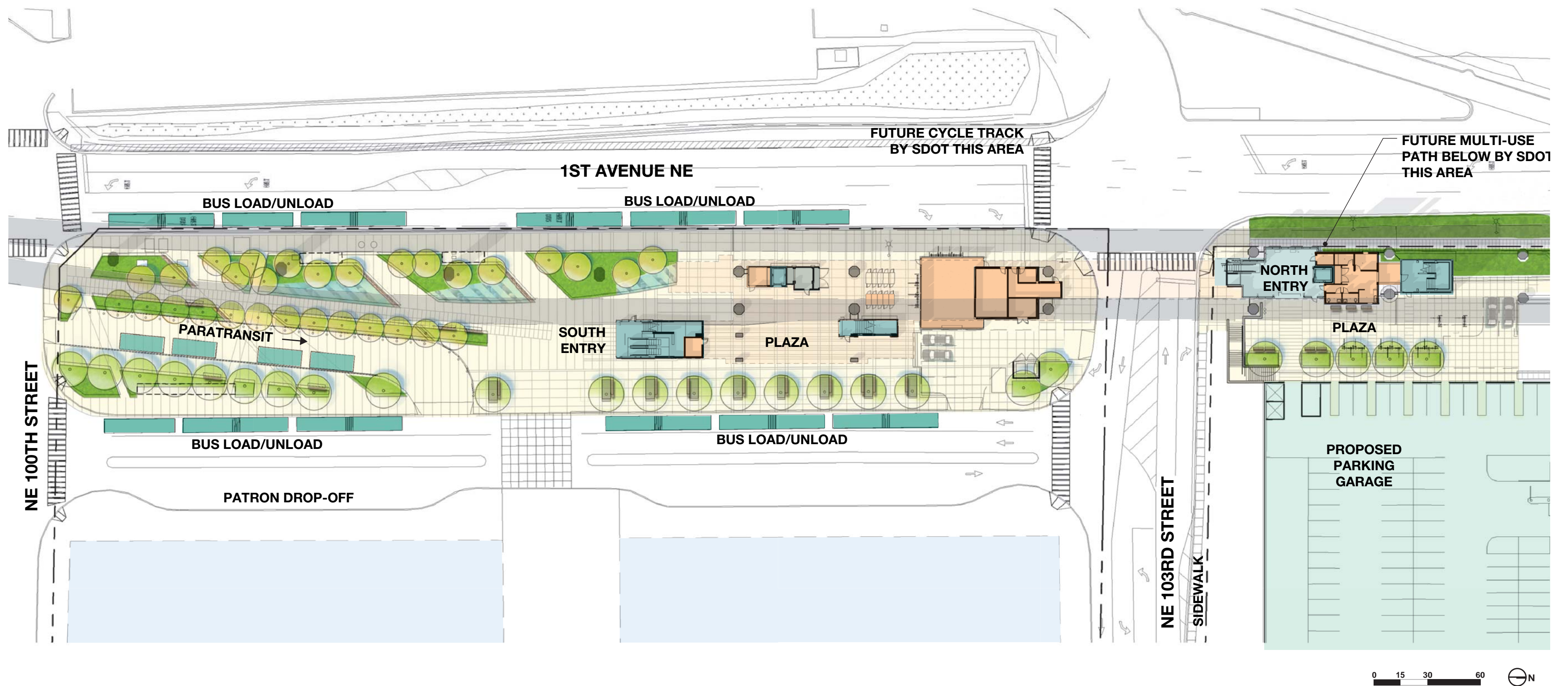
Olympic View School auditorium, 504 NE 95th St.

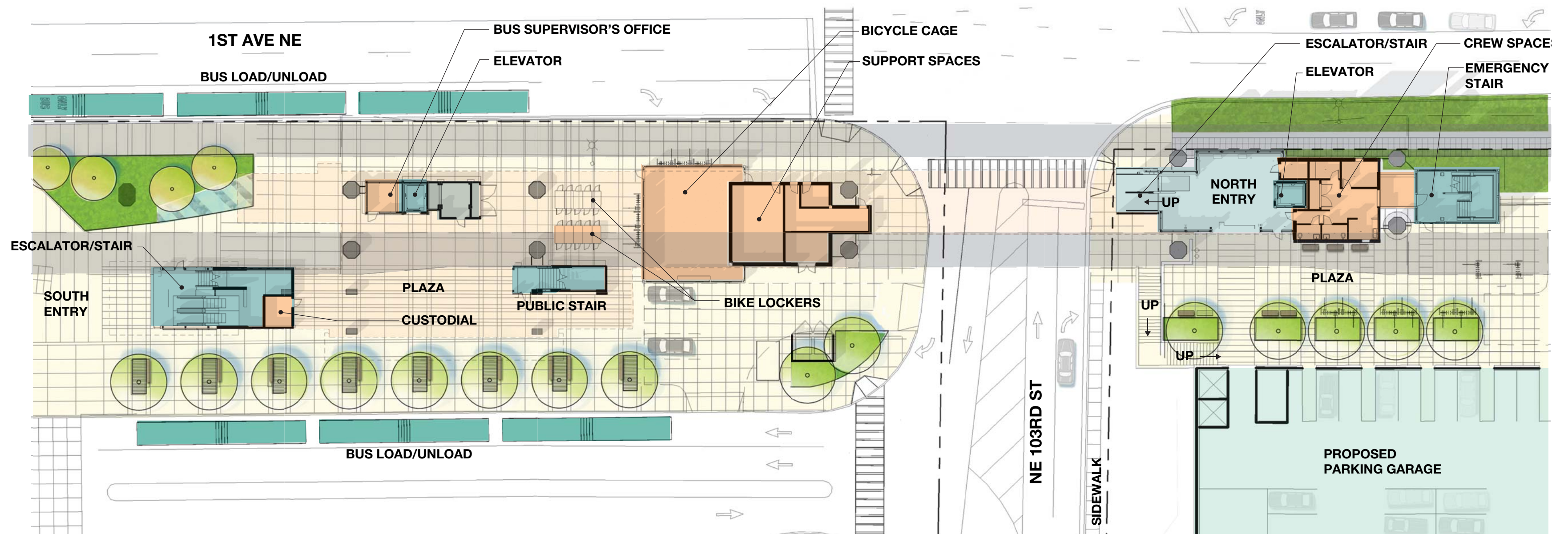
6 – 8pm, presentation begins at 6:30pm
- ST currently briefing community councils and ped/bike groups on Northgate Station access study preliminary results
- City will conduct UDF meetings in June/July



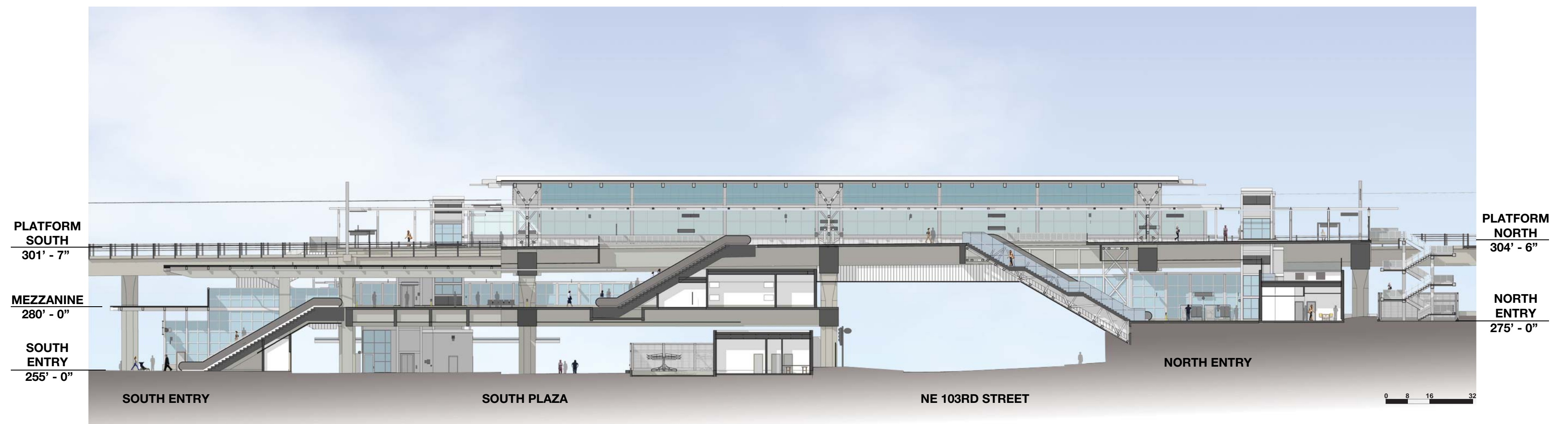




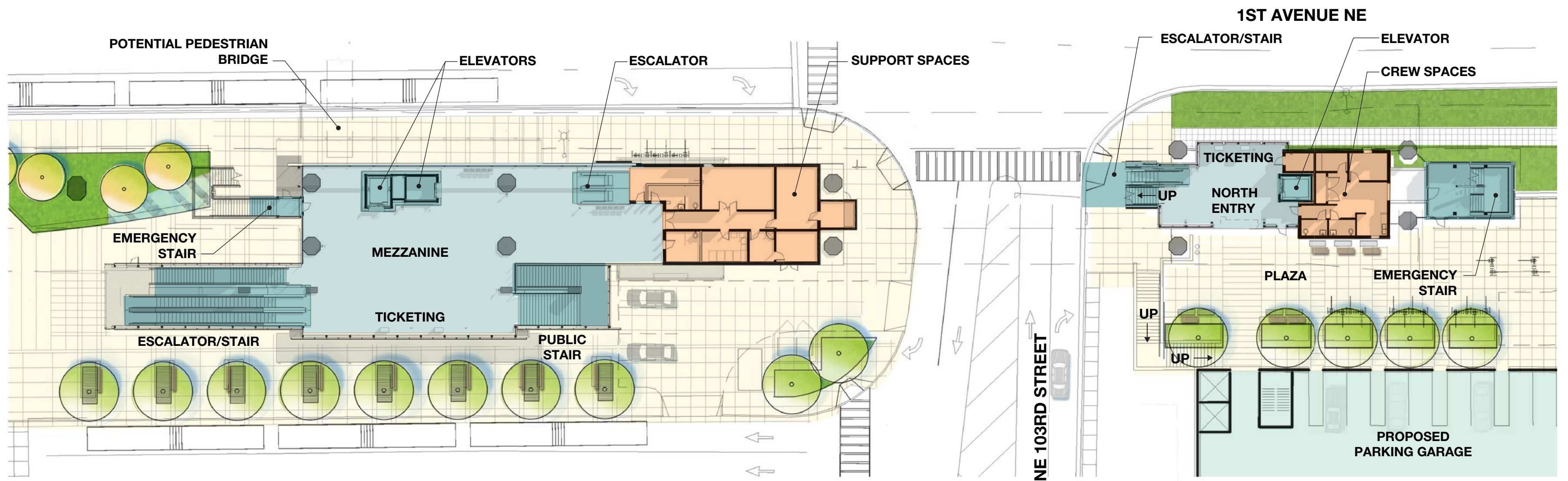
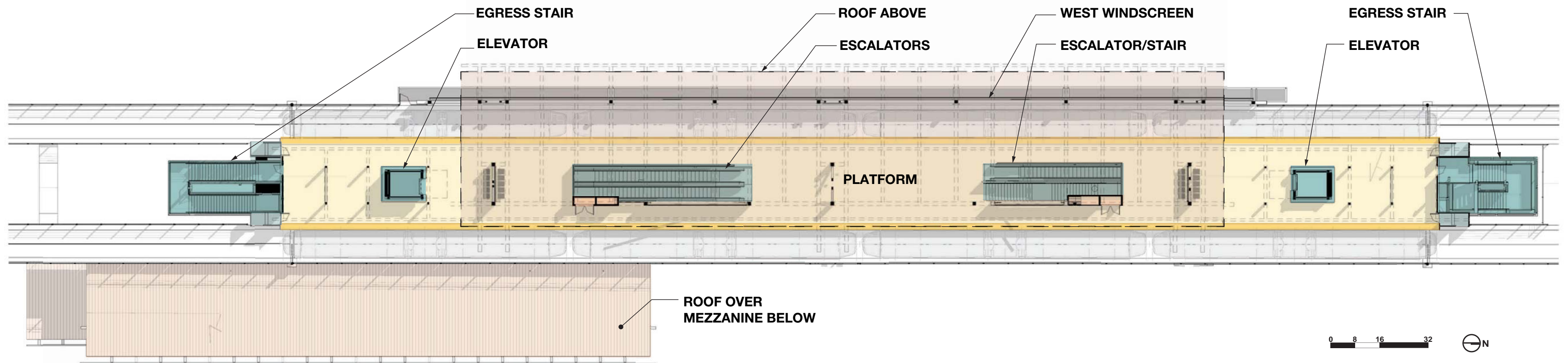


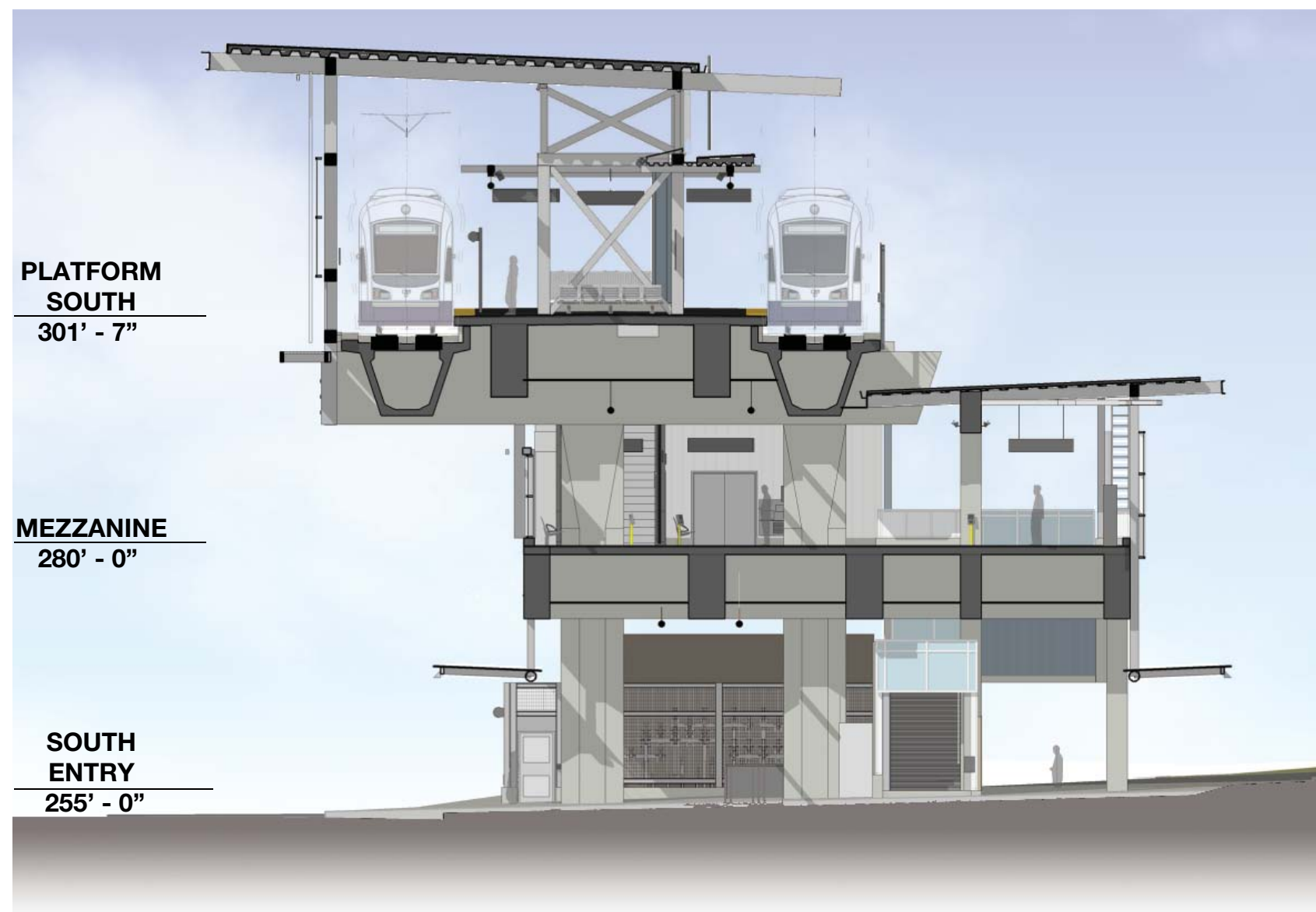


Surface Plan

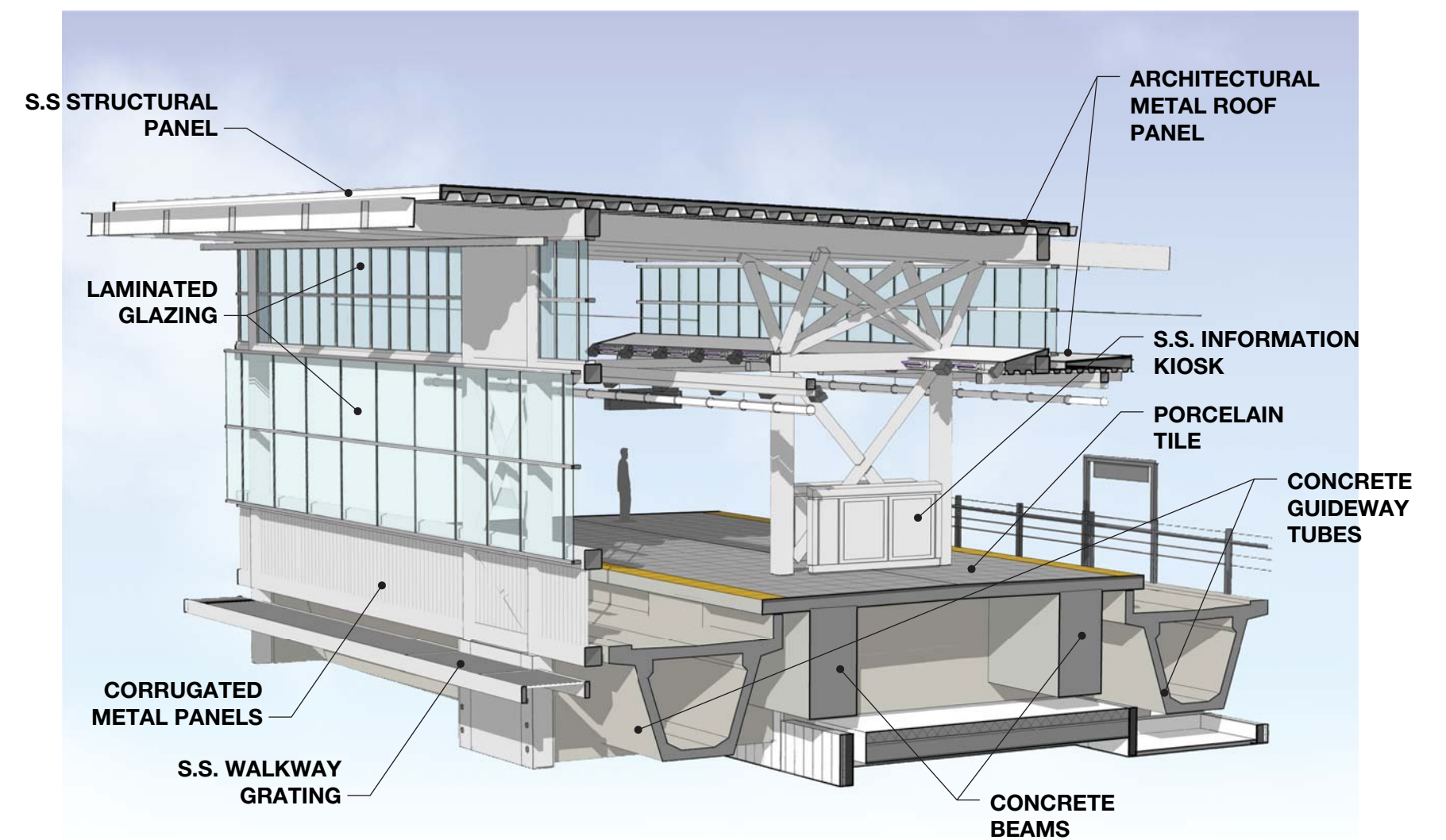


Longitudinal Section

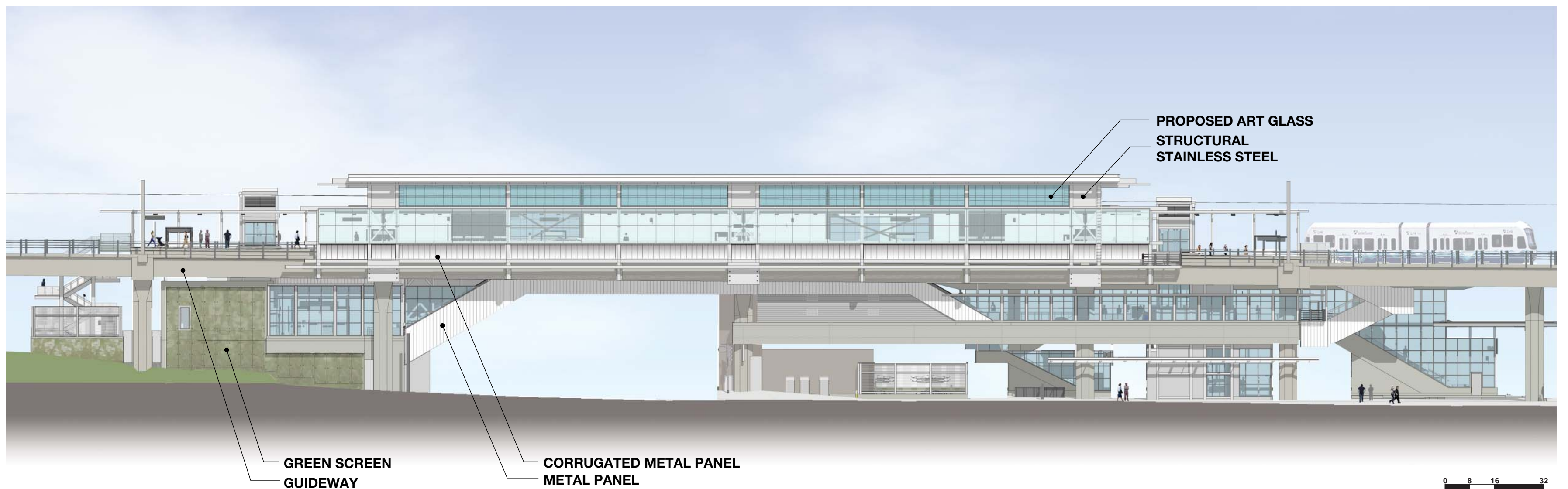




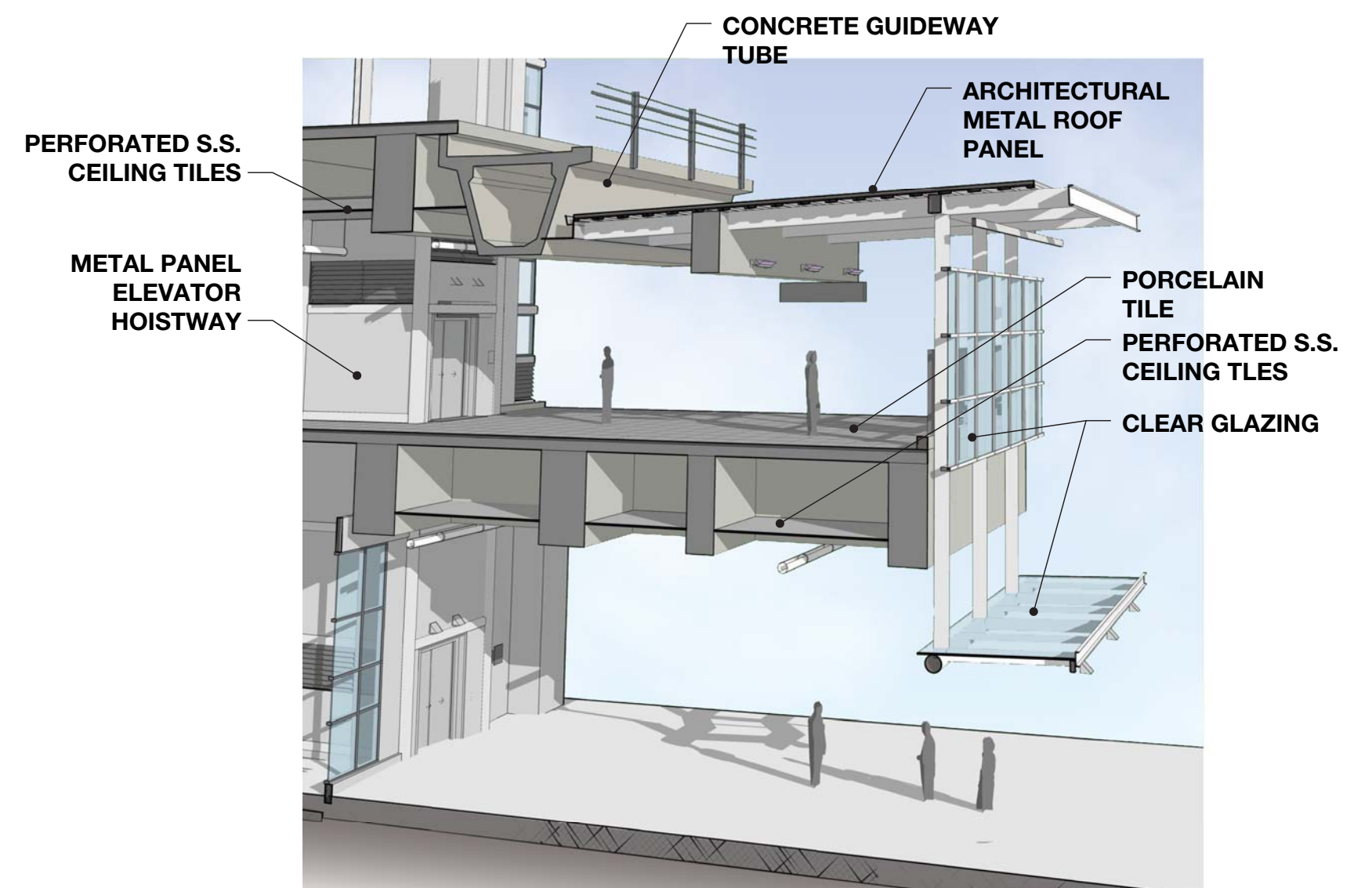
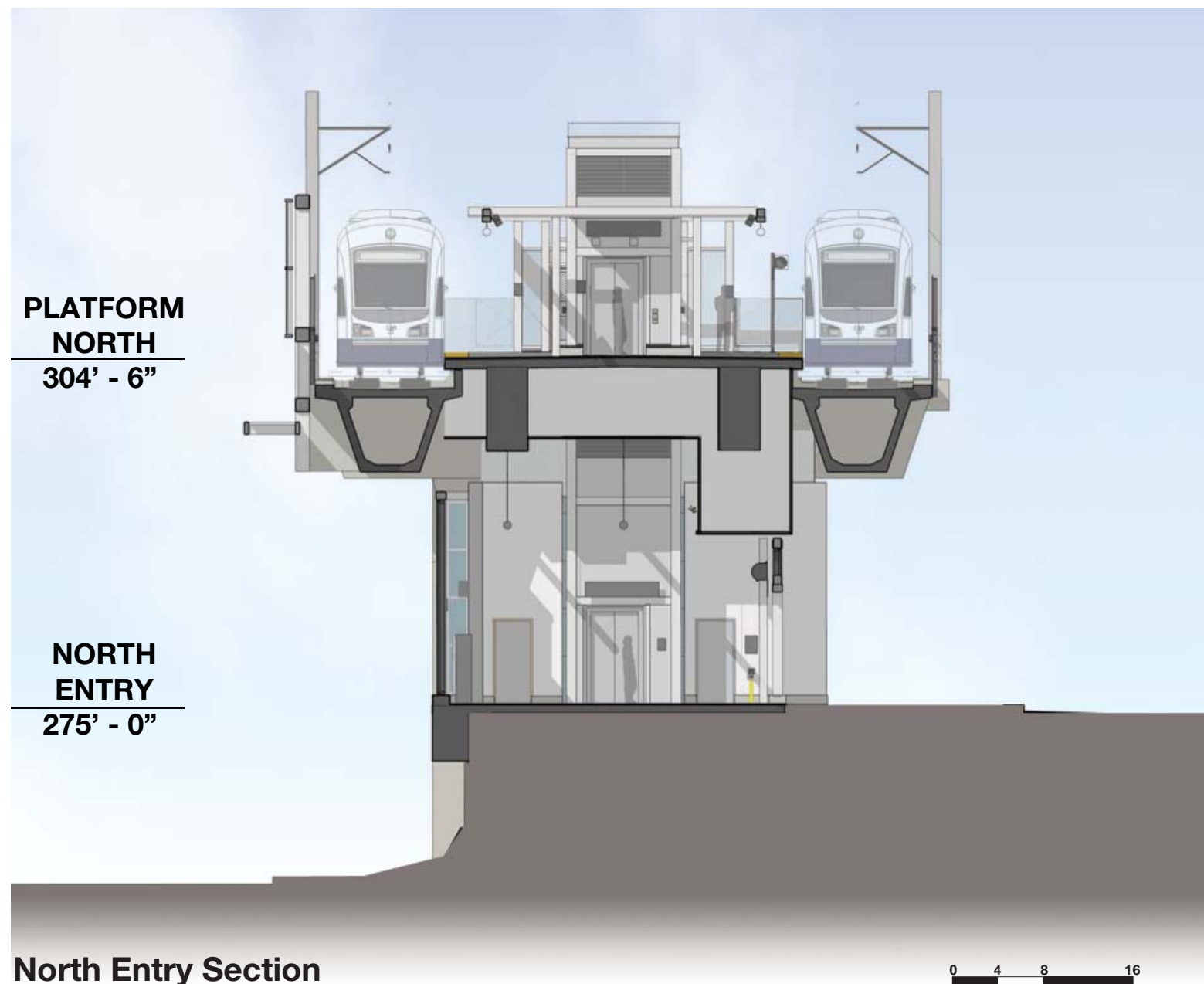
South Plaza Section



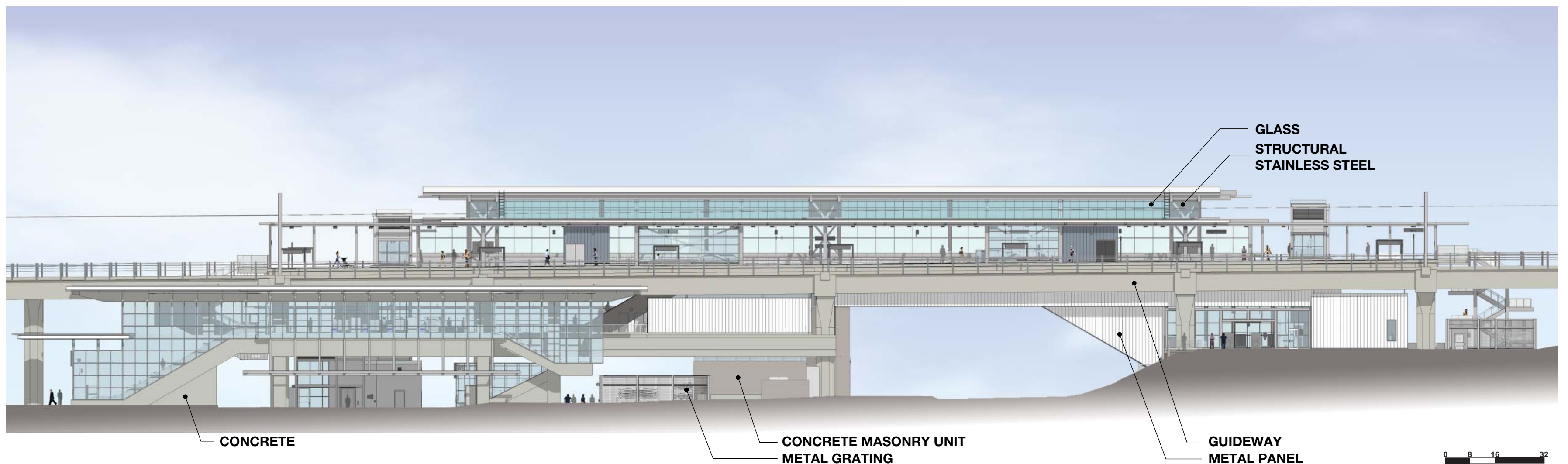
Platform looking Northeast



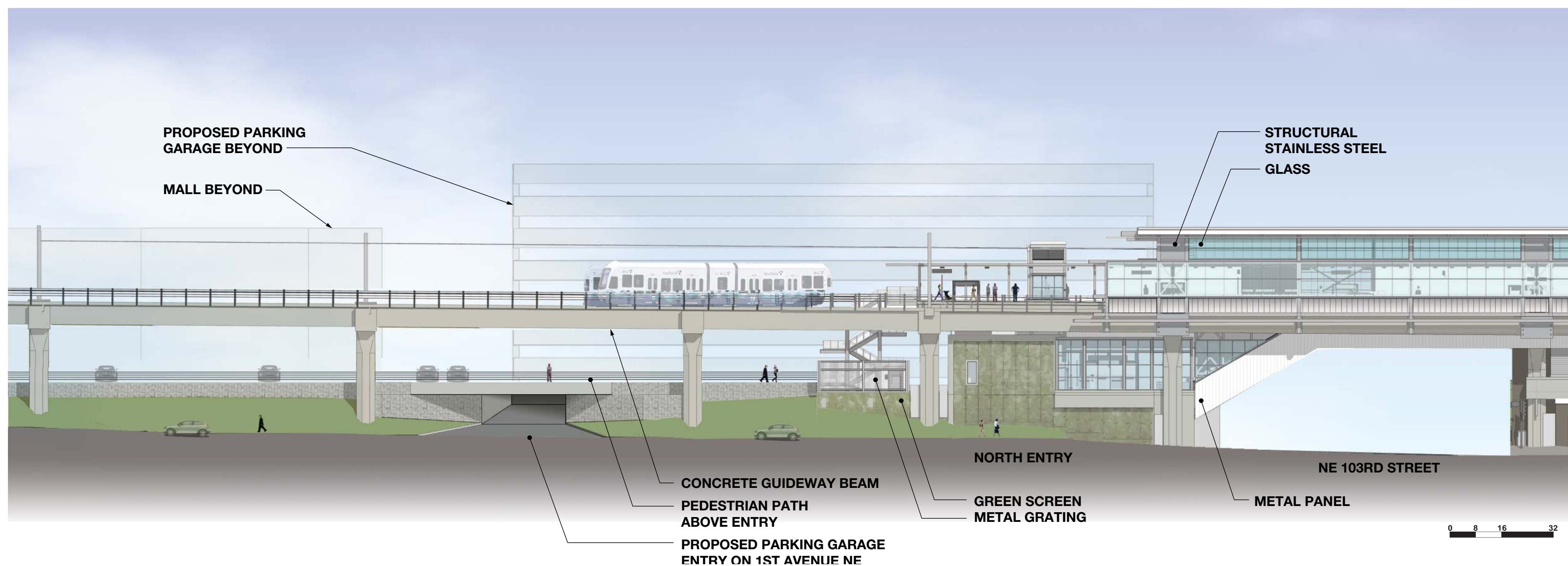
Cross Section and West Elevation

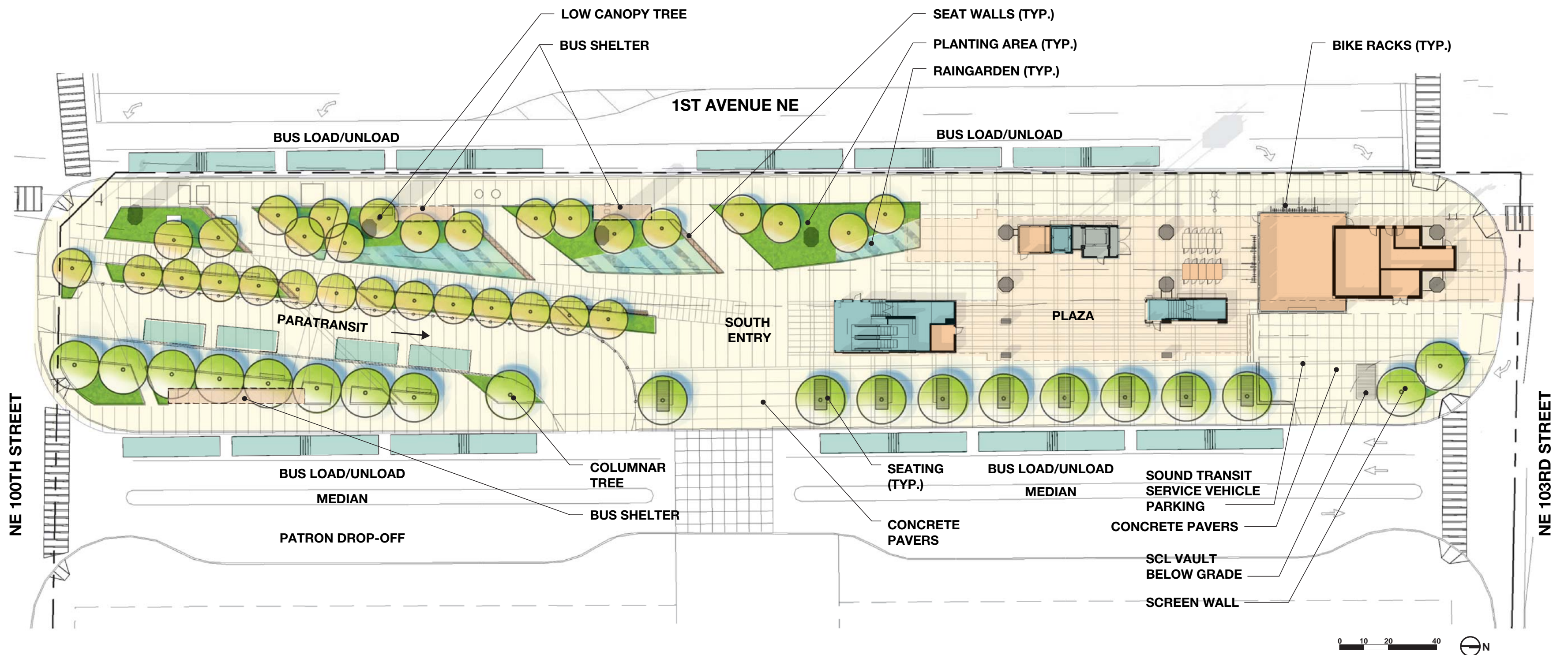


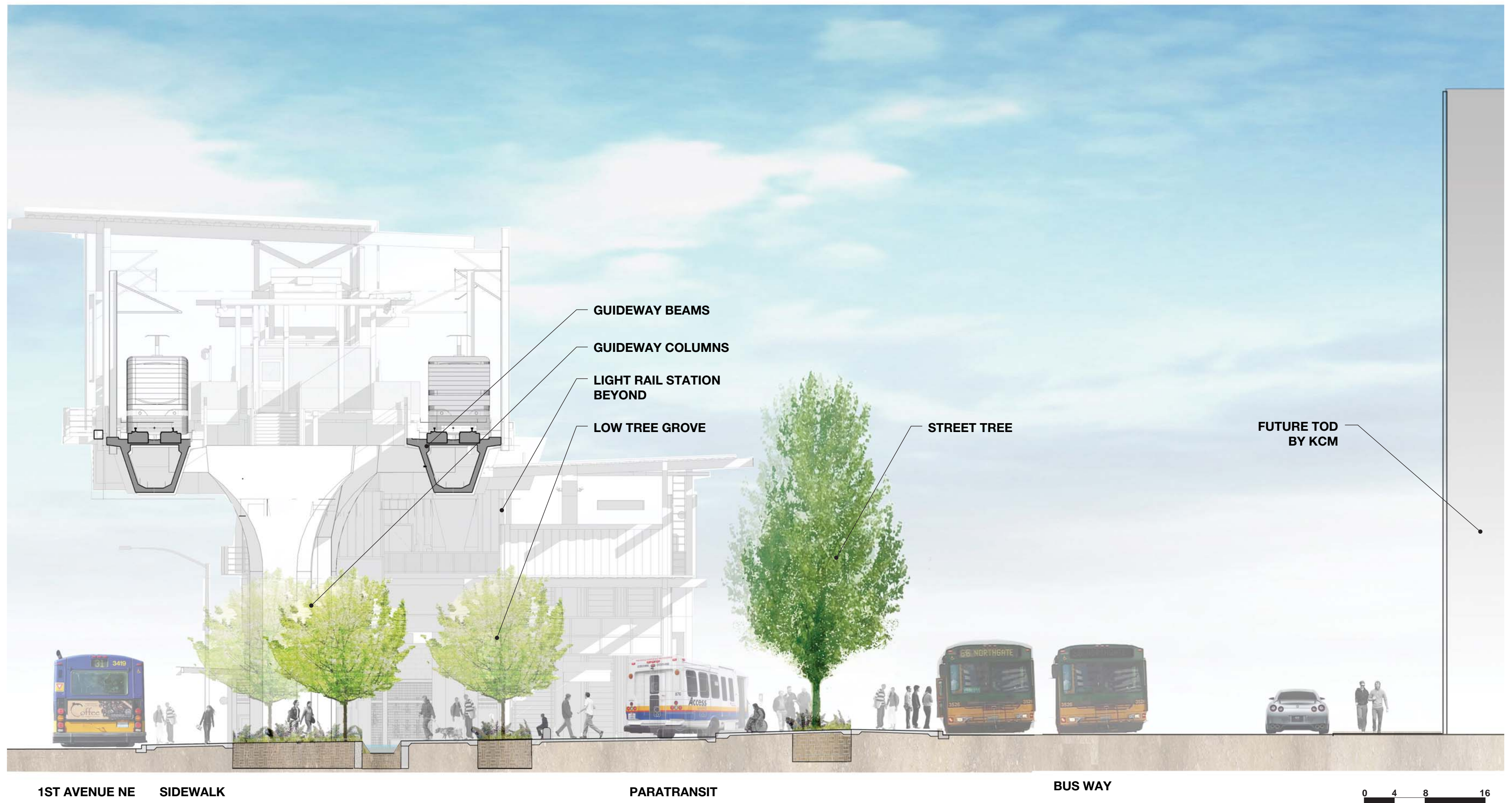
Entry Pavilion

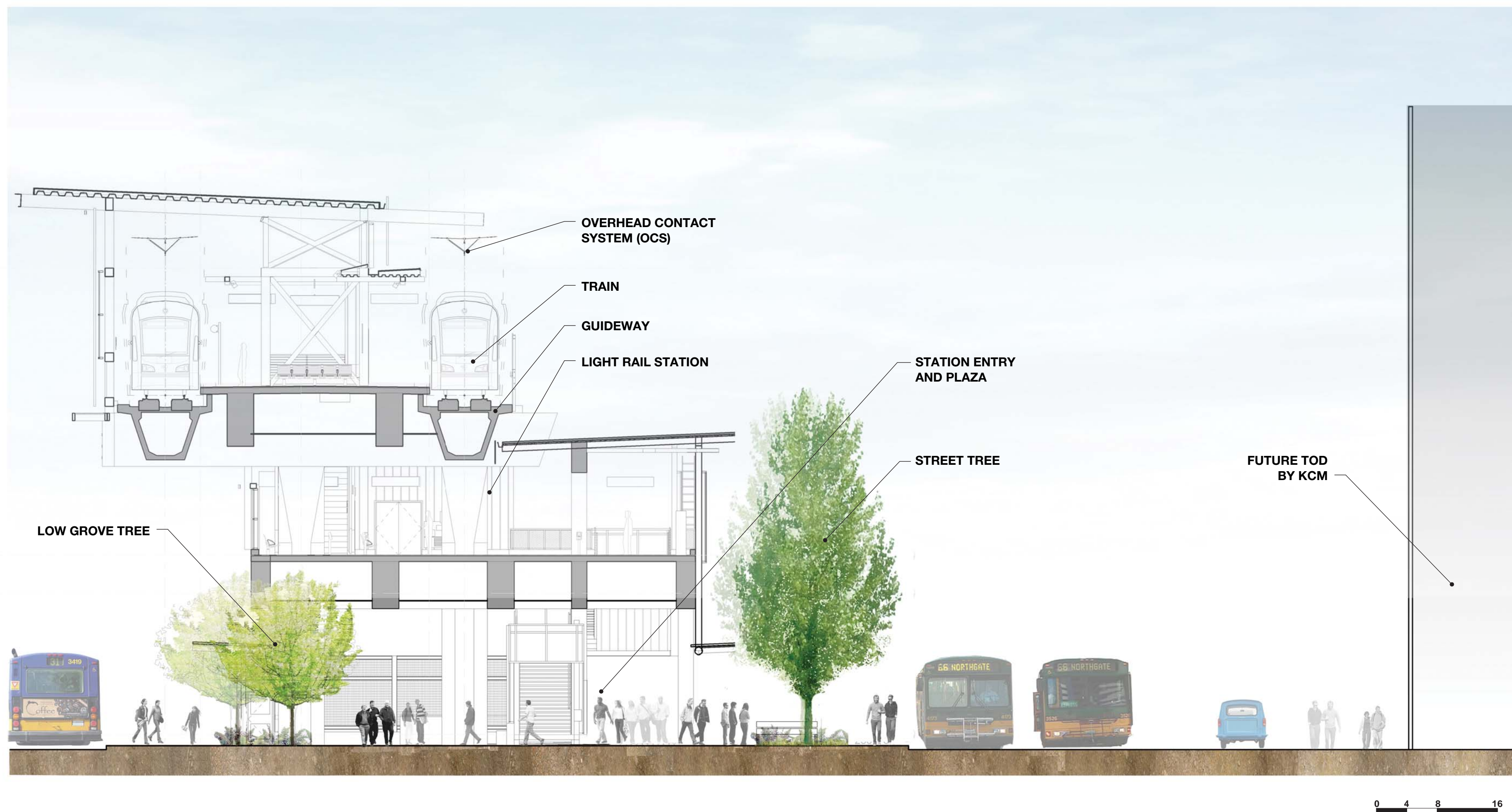


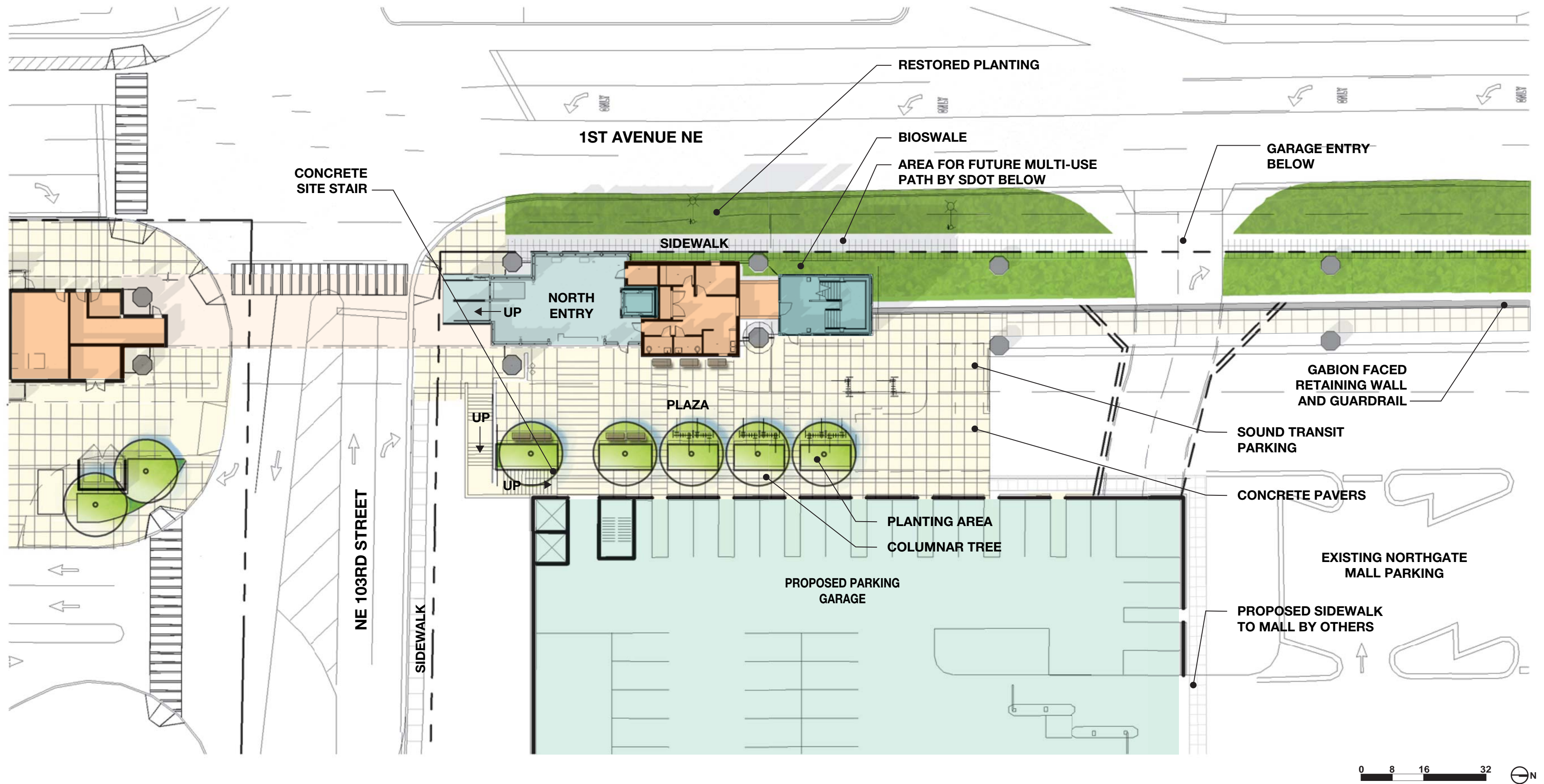
Cross Section and East Elevation

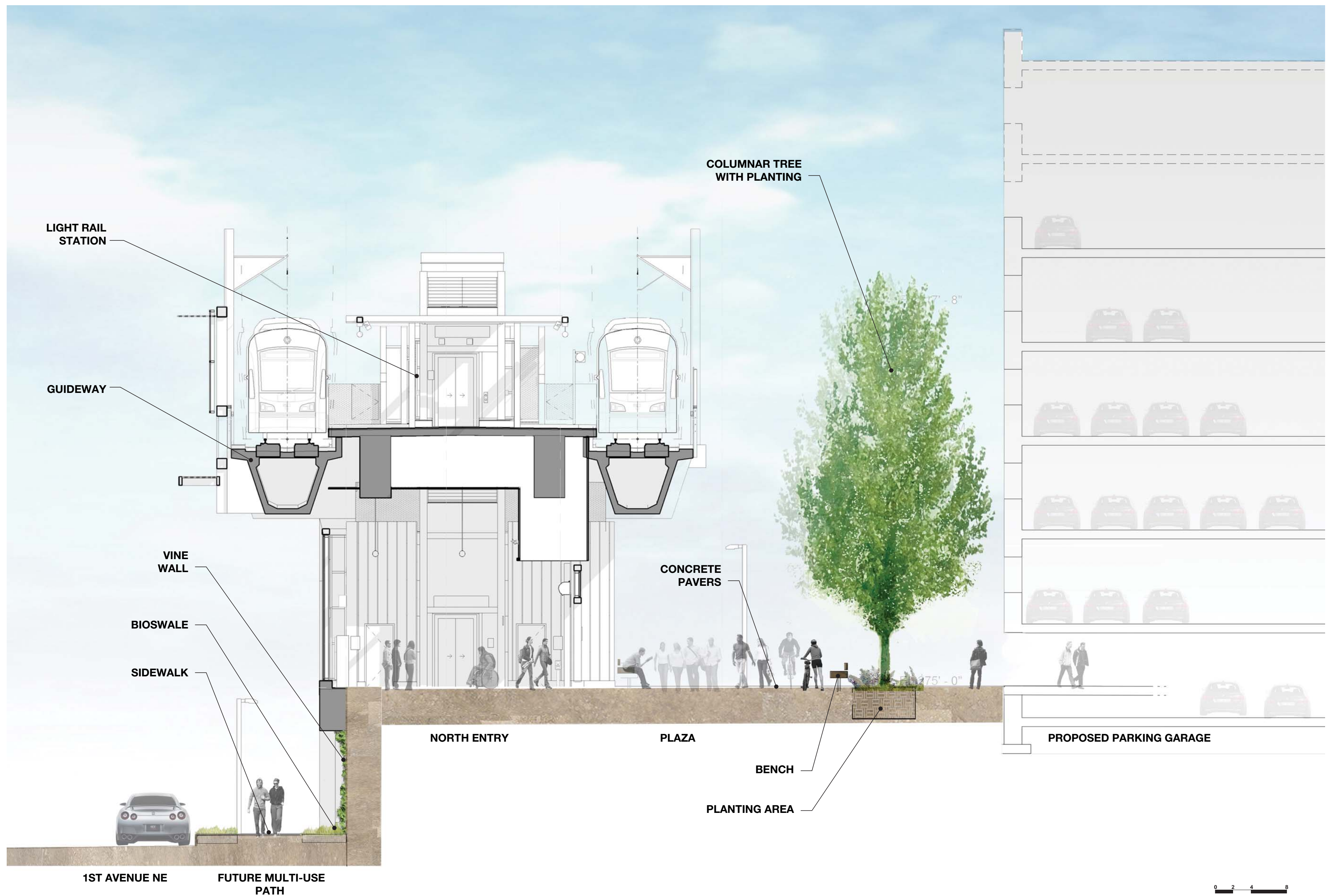












Cross Section - North Entry Plaza

Pavement + Steps



Furnishings



Walls + Planters



TREES



Princeton Sentry Ginkgo
Ginkgo biloba 'Princeton Sentry'



Katsura
Cercidiphyllum japonicum



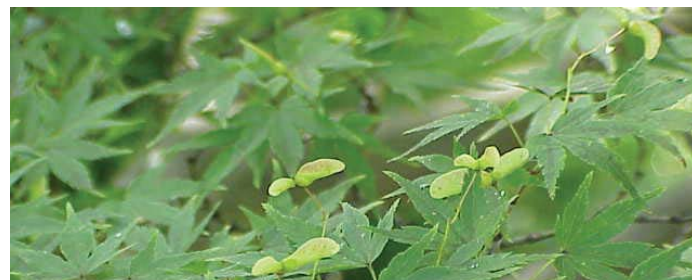
Ash
Fraxinus species



Japanese Hornbeam
Carpinus japonica



Serviceberry
Amelanchier grandiflora



Japanese Maple
Acer palmatum

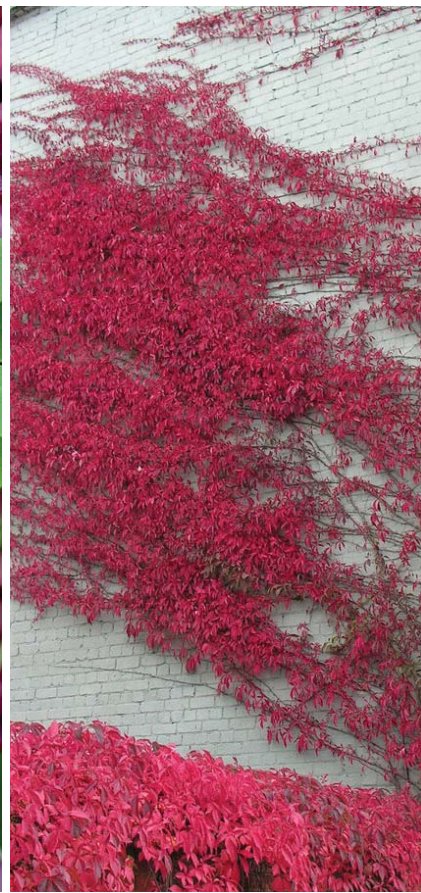
VINES



Silvervein Creeper
Parthenocissus henryana



Five-Leaf Akebia
Akebia quinata



Virginia Creeper
Parthenocissus quinquefolia

FERNS



Deer Fern
Belchnum spicant



Sword Fern
Polystichum munitum

SHRUBS



Dwarf Red Twig Dogwood
Cornus sericea 'kelsey'



Everlow Yew
Taxus media 'Everlow'



Box-Leaf Euonymus
Euonymus japonicus 'microphyllus'



Low Oregon Grape
Mahonia nervosa



Dwarf Sweet Box
Sarcococca hookeriana var. humilis



Dwarf Burning Bush
Euonymus alatus 'Little Moses'



Hebe
Hebe glaucophylla

GROUNDCOVER



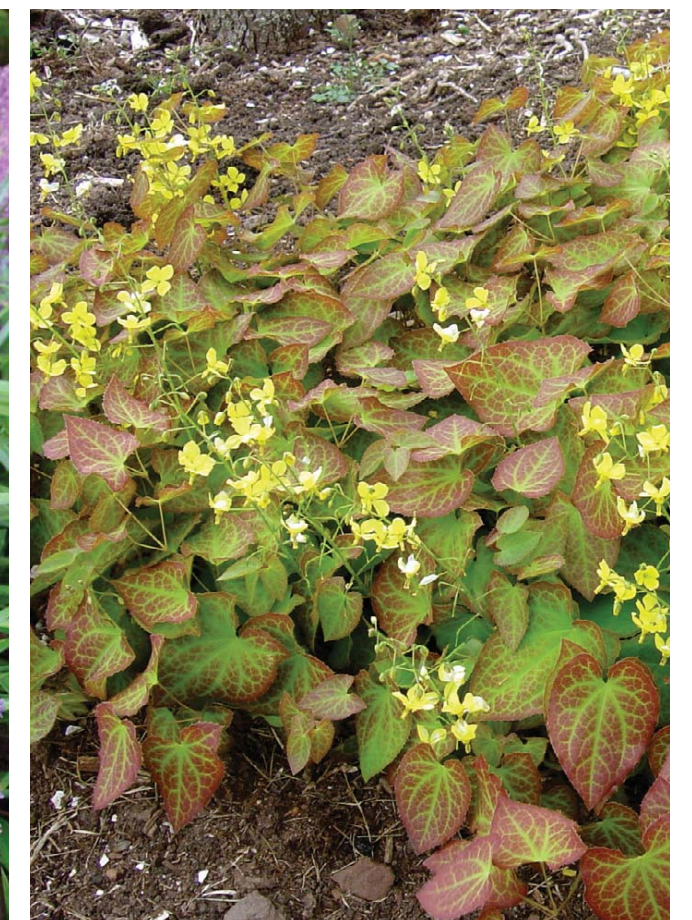
Beesia
Beesia deltophylla



Western Wild Ginger
Asarum Caudatum

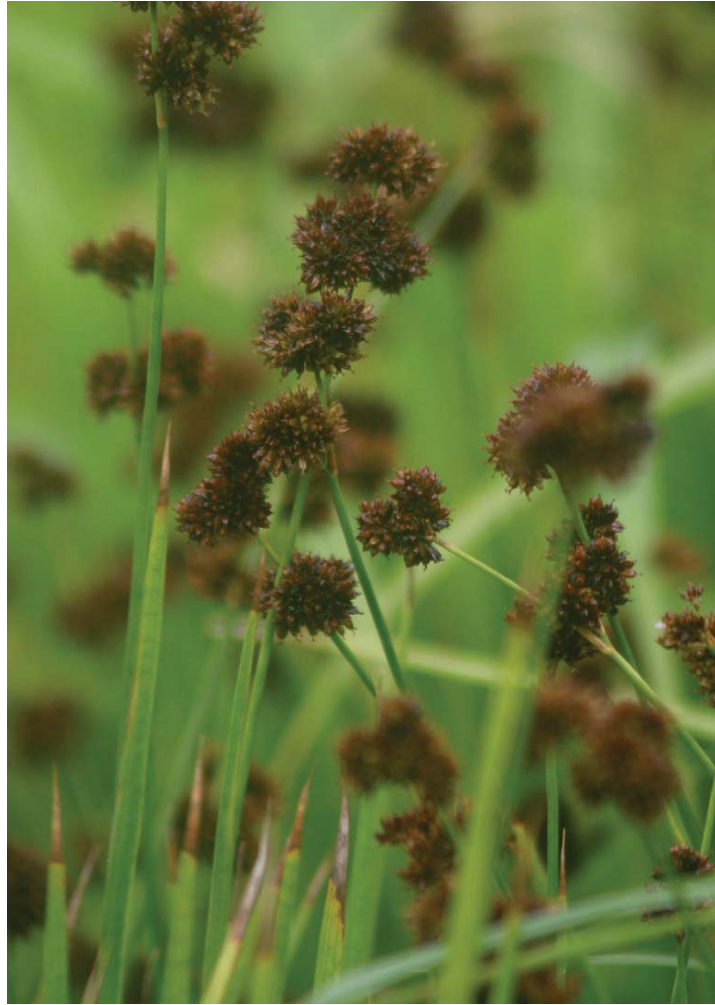


Lily Turf
Liriope muscari



Hybrid Epimedium
Epimedium perralchicum

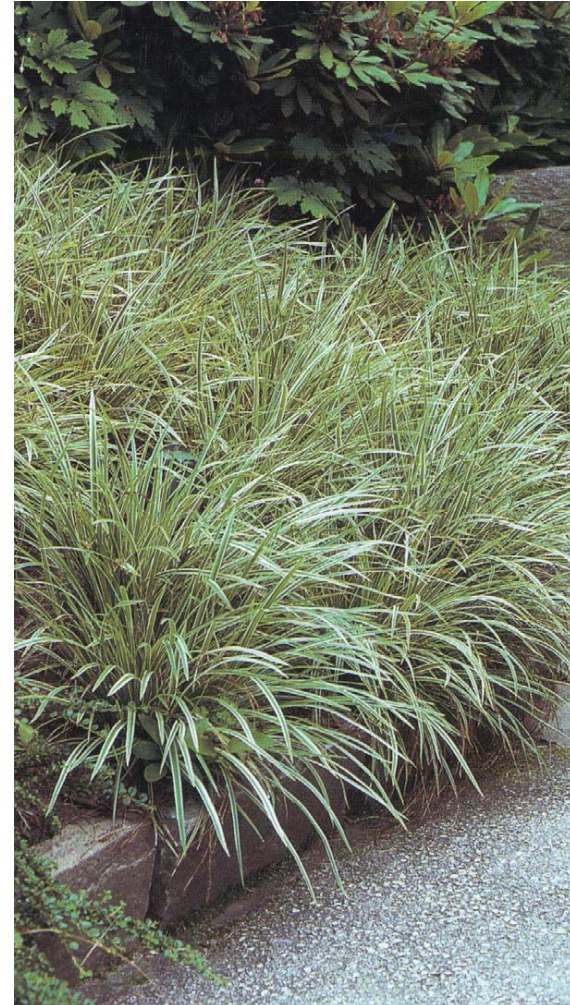
GRASSES



Daggerleaf Rush
Juncus ensifolius



Soft Rush
Juncus effusus



Sedge
Carex



California Gray Rush
Juncus patens



Adagio Maiden Grass
Miscanthus sinensis 'Adagio'



Japanese Sweet Flag
Acorus gramineus

BAMBOO



Dwarf Whitestripe Bamboo
Pleioblastus fortunei



Vetchii Minor Bamboo
Sasa hayatae



Dwarf Fern-Leaf Bamboo
Pleioblastus distichus



Dwarf Greenstripe
Pleioblastus viridistriatus



Pigmy Bamboo
Pleioblastus pygmaeus













Approach looking Northeast

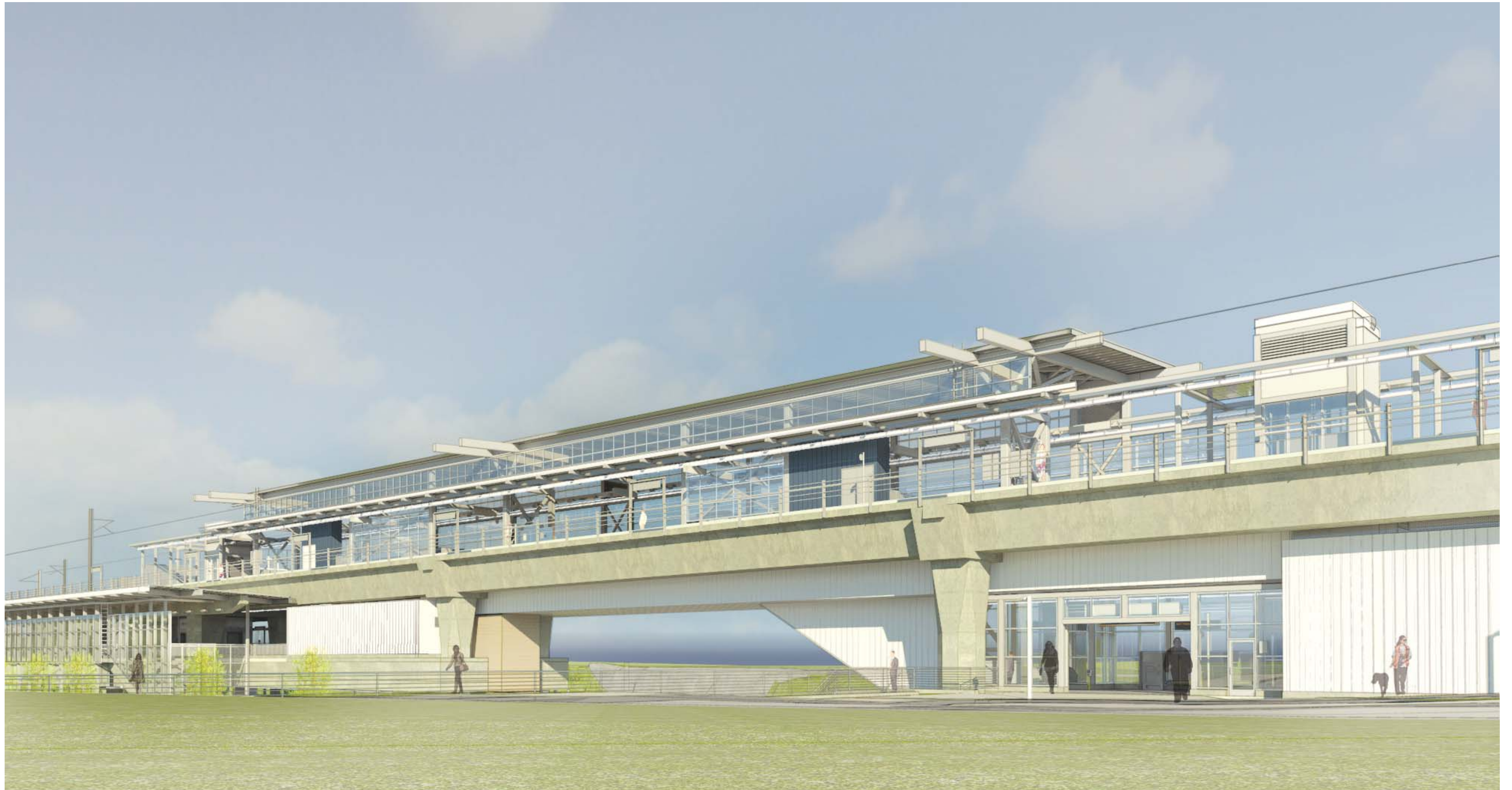












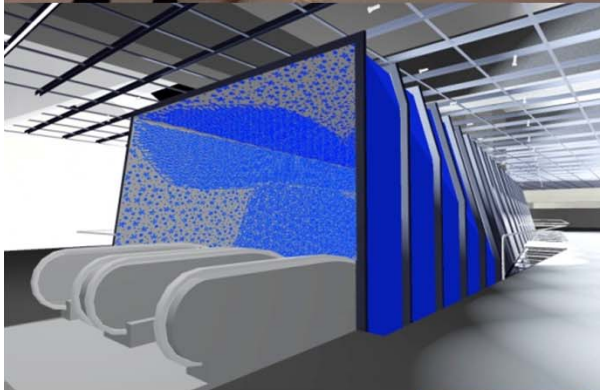




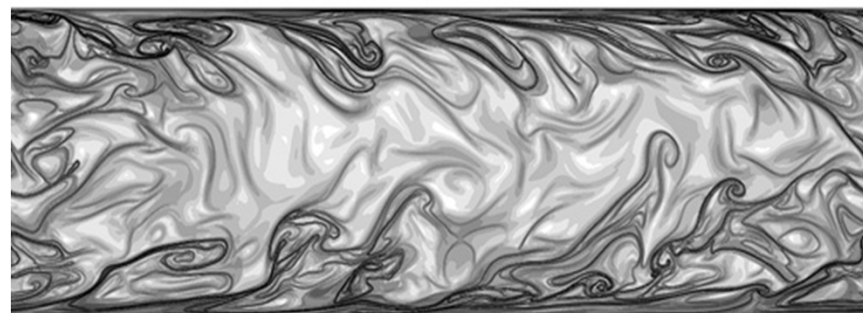
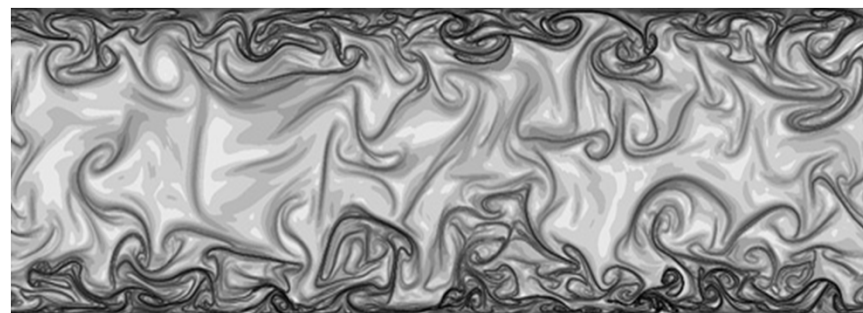
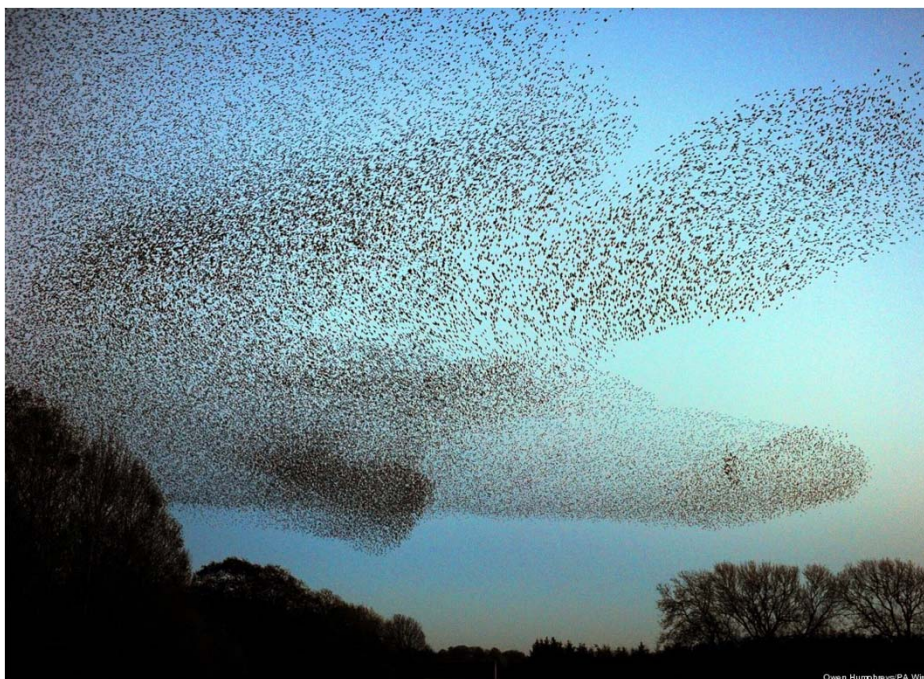


STart – Sound Transit Art Program

Creating a Sense of Place

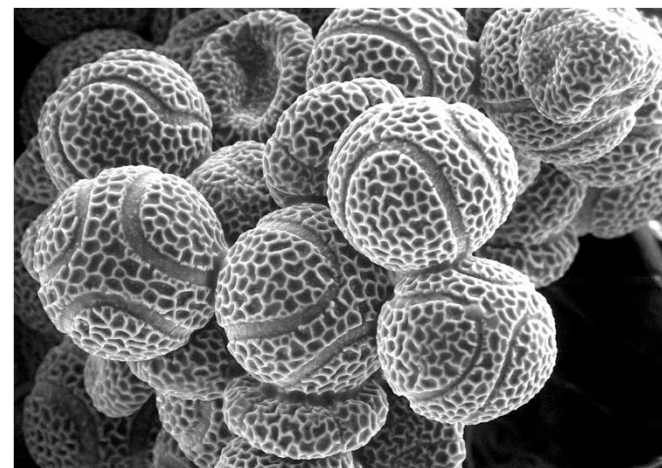
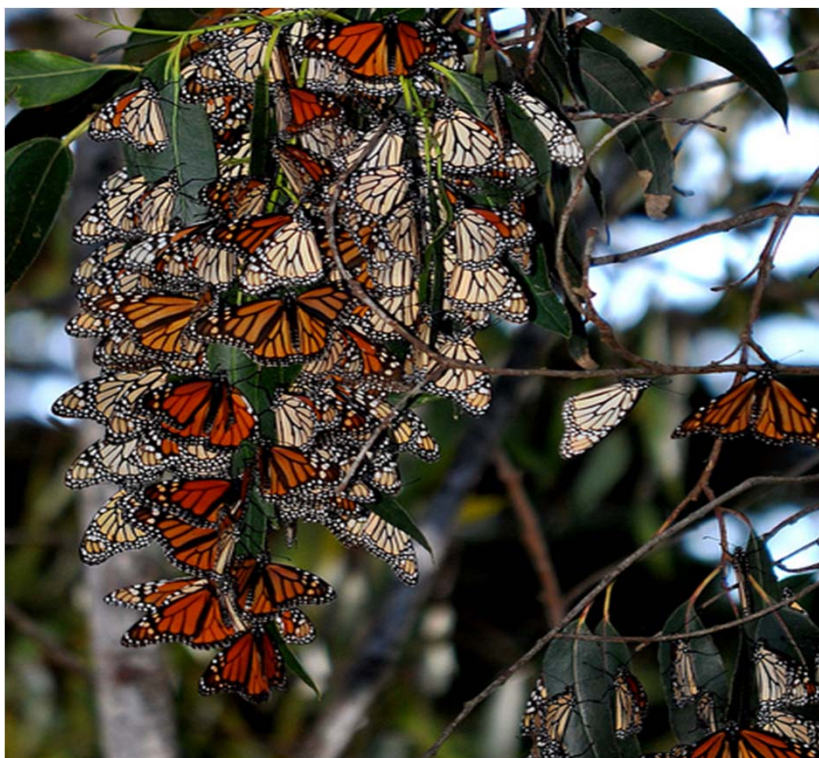


Northgate Station: Cris Bruch, plaza artist in concept development



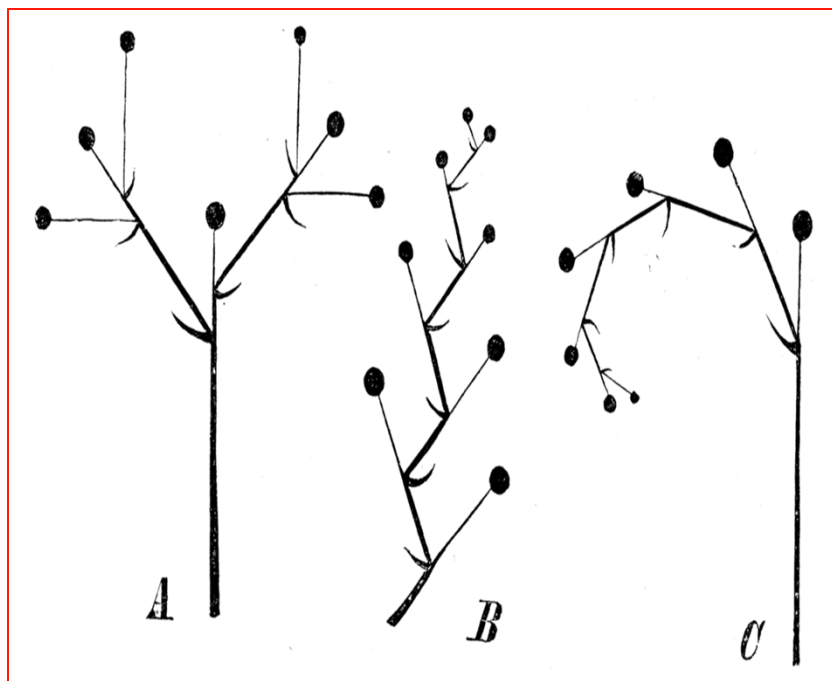
- People moving through the space, gathering and dispersing
- A central flow, with some eddies and backwaters

Northgate Station: Cris Bruch, plaza artist in concept development



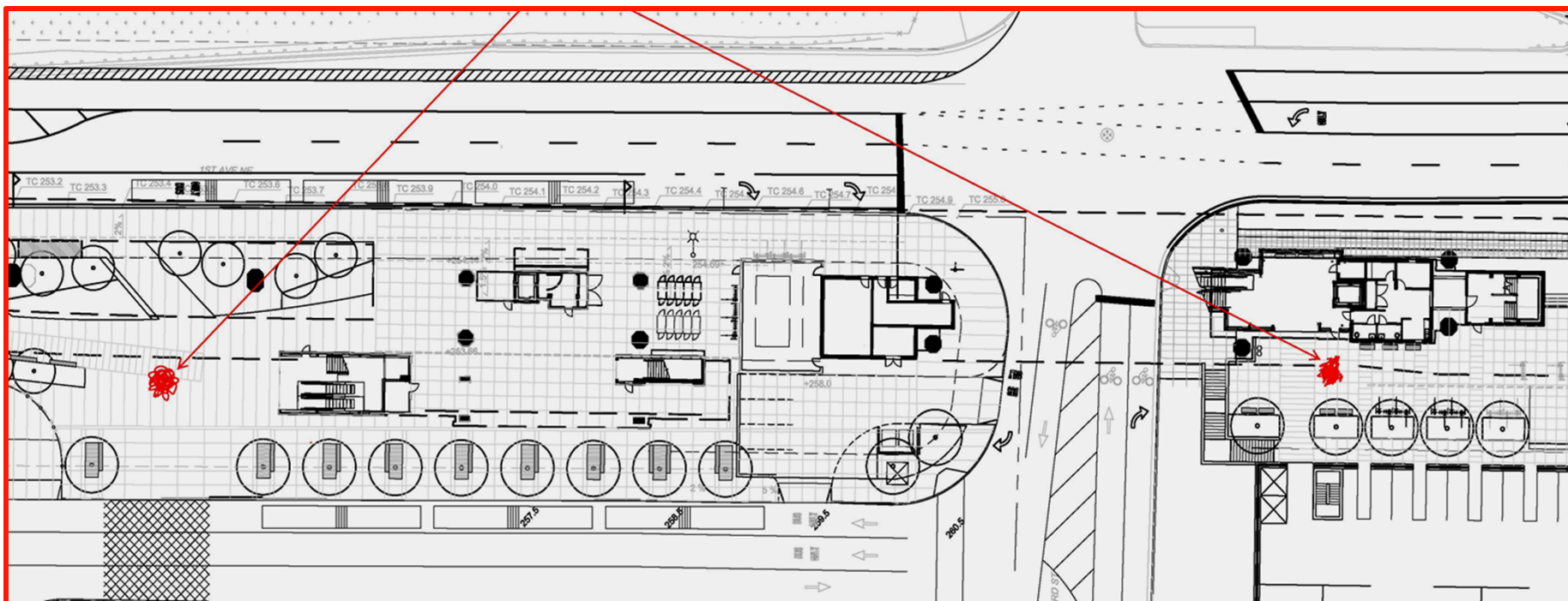
- Individuals forming groups, sharing space and boundaries, creating larger forms

Northgate Station: Cris Bruch, plaza artist in concept development



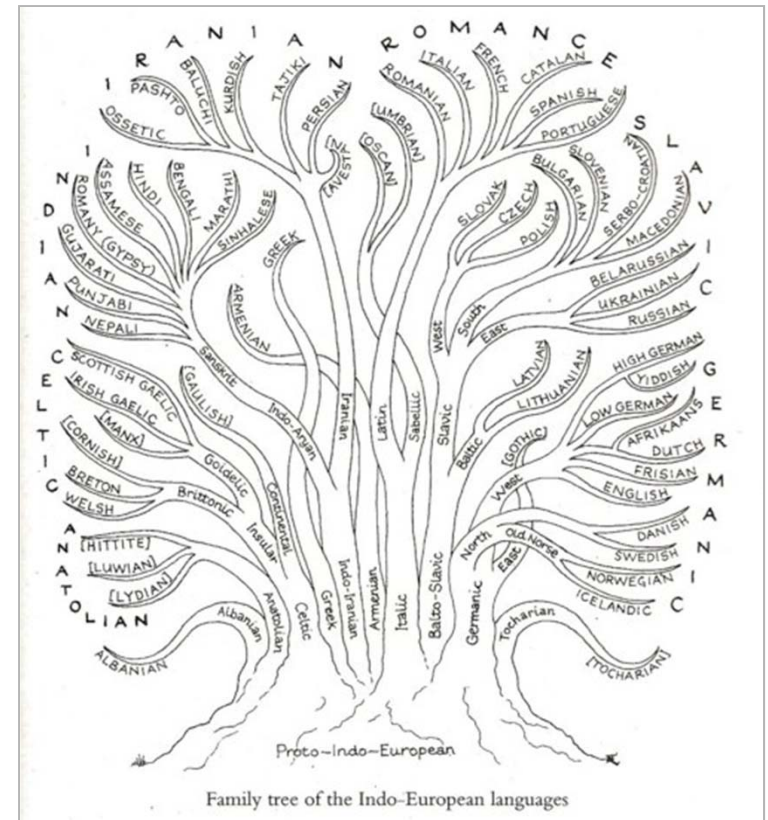
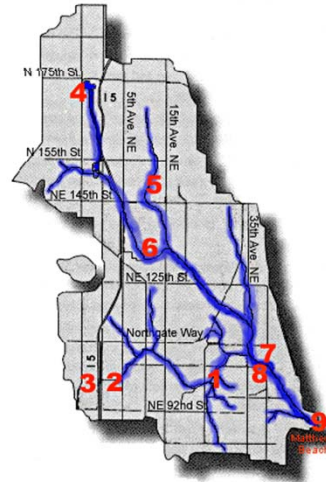
- Platform sculptures require a small footprint and may be integrated with structure of entrance canopies

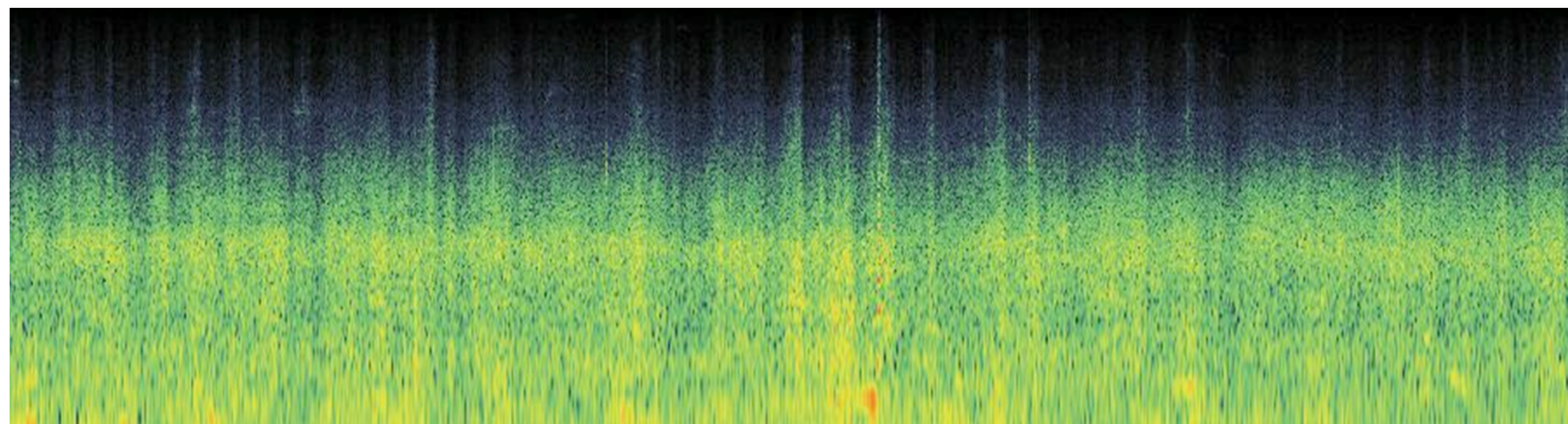
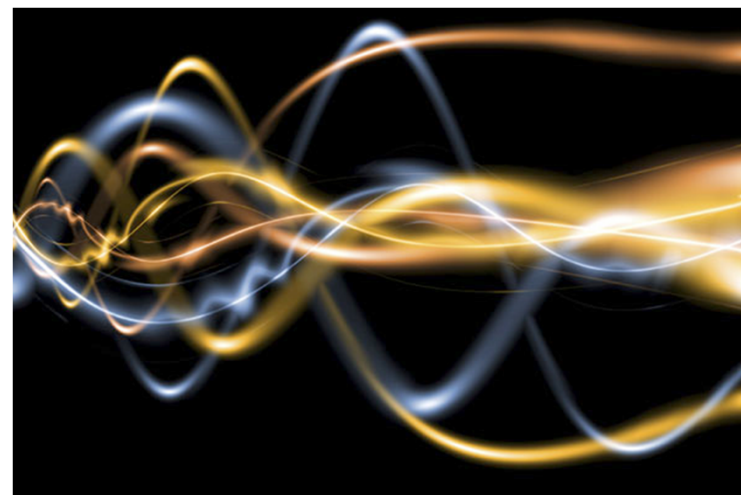
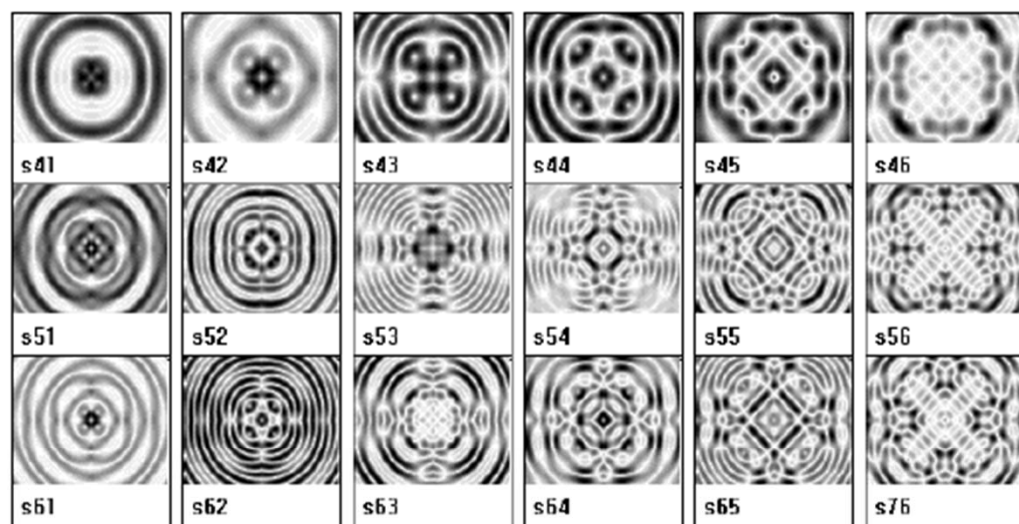
Northgate Station: Cris Bruch, plaza artist in concept development

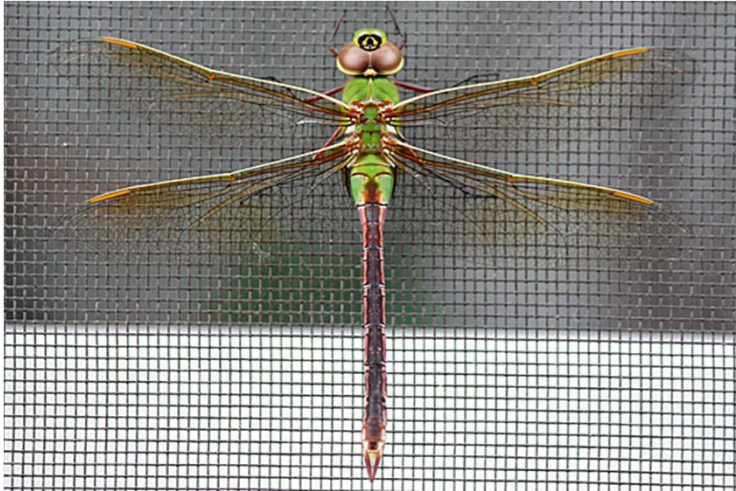


- Similar sculptures marking the main entrances, with smaller sculptures at locations on the platform and mezzanine

Northgate Station: Mary Ann Peters, artist in concept development







Leading yellow edge, faint wash of amber on wing

