



East Link Extension: Judkins Park Station LRRP - 90% Design

September 1, 2016

Agenda



- ❖ East Link Overview, *Cynthia Padilla, ST*
- ❖ January 2016 Conditions
and Coordination with others, *Cynthia Padilla, ST*
- ❖ Station Design, *Leah Ephrem, HEWITT/PB*
Tanja Wilcox, J. A. Brennan/PB
- ❖ STart Update, *Kurt Kiefer, ST*
- ❖ Questions and Comments

East Link Overview

Length: 14 miles

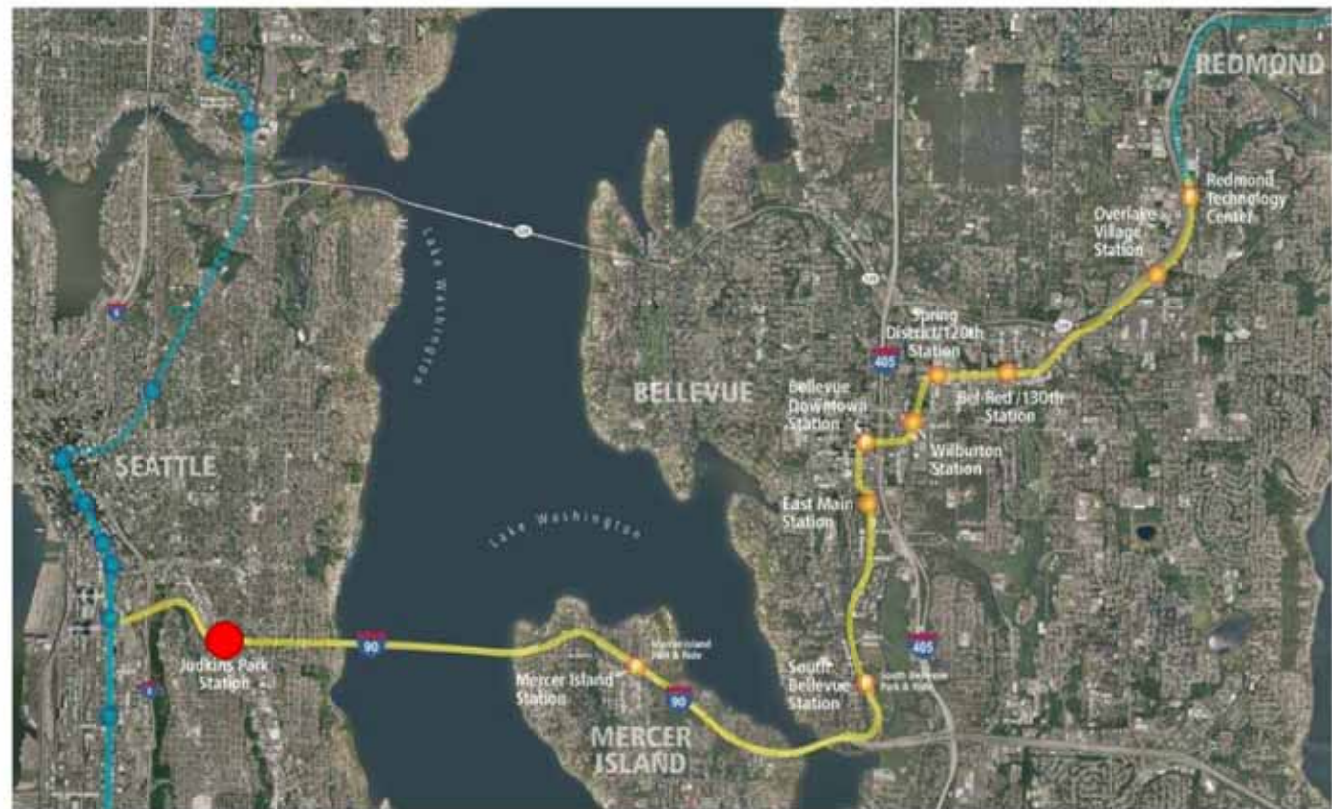
Ride times:

- Mercer Island to UW: 20 min.
- S. Bellevue to Airport: 50 min.
- Overlake Transit Center to Bellevue Transit Center: 10 min.

Rider projection: 50,000 daily by 2030

Budget: \$3.7 Billion YOE

Start of Service: Targeted 2023



East Link Timeline



January 2016 Conditions (60% Update)



1. Rainier Avenue S:
Coordinate with SDOT and KCM to resolve *bicycle and pedestrian circulation* and provide a *drop-off area*.

STATUS: On-going

2. Art - Hank Willis Thomas:
Schedule a LRRP Administrative Review of *Hank Willis Thomas's art plan*.

STATUS: Completed May 12, 2016

Coordination with SDOT and others



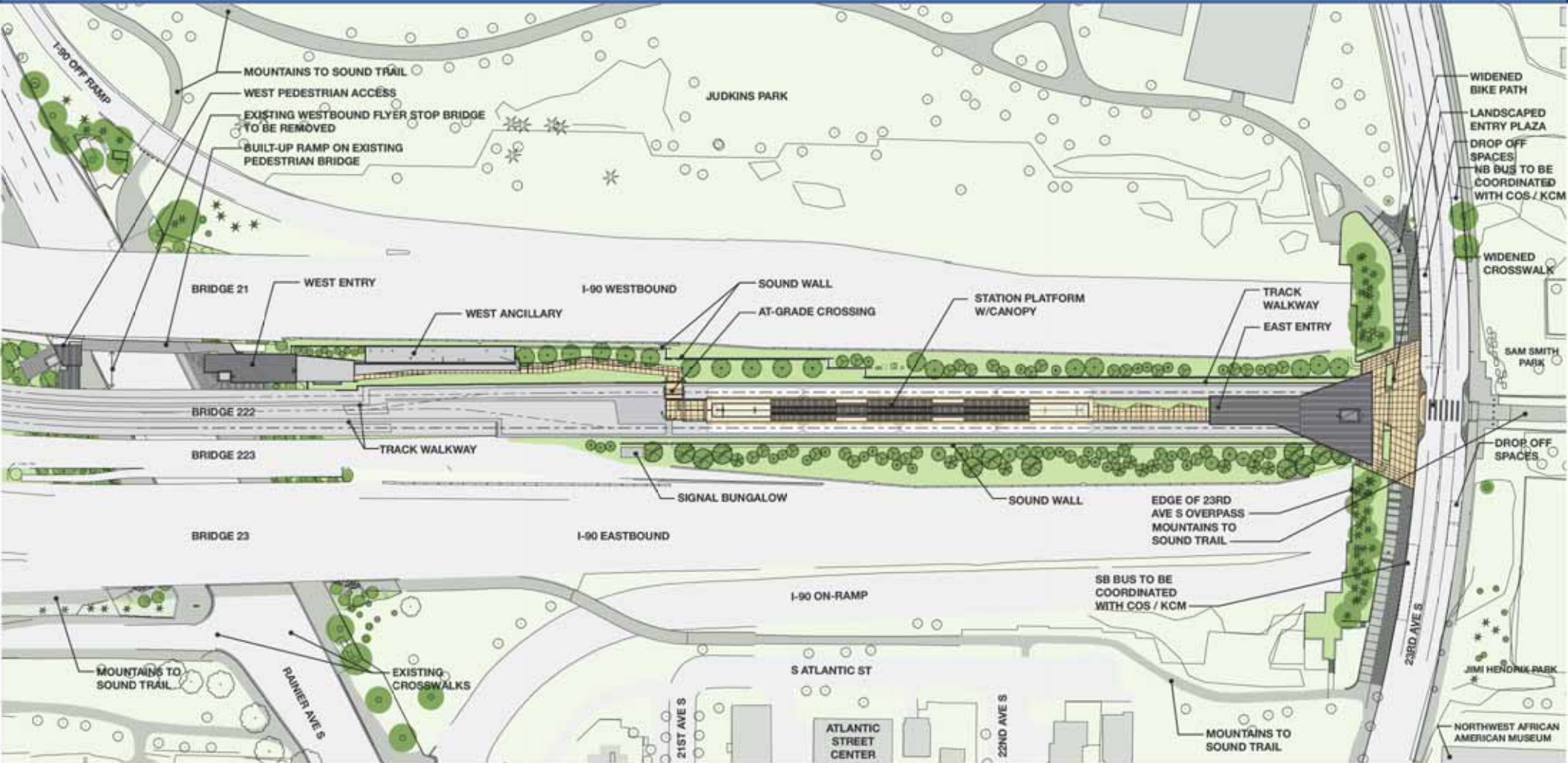
- ❖ Rainier Avenue S:
SDOT Project includes possible Rapid Ride corridor and pedestrian/bicycle circulation
ST ACTION: Continued coordination with various agencies (e.g., SDOT, WSDOT, KCM)
- ❖ 23rd Avenue S:
SDOT 23rd Avenue Improvements Project
ST ACTION: Continued coordination with SDOT and KCM for channelization, curb bulbs, bus stop relocation and amenities, etc.

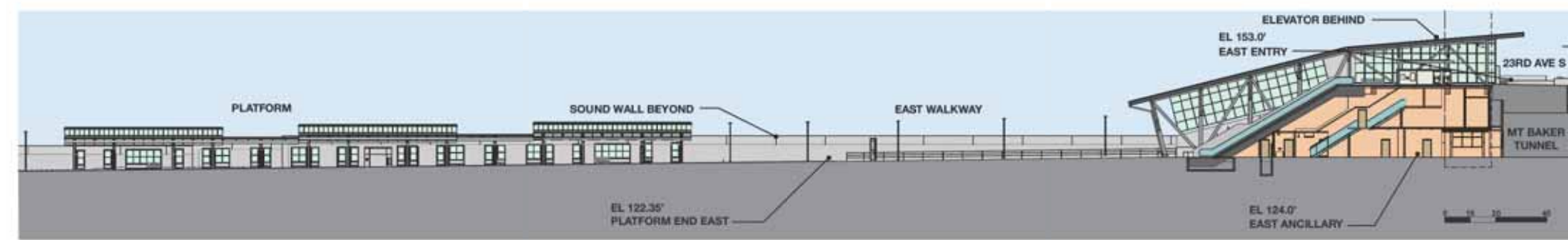
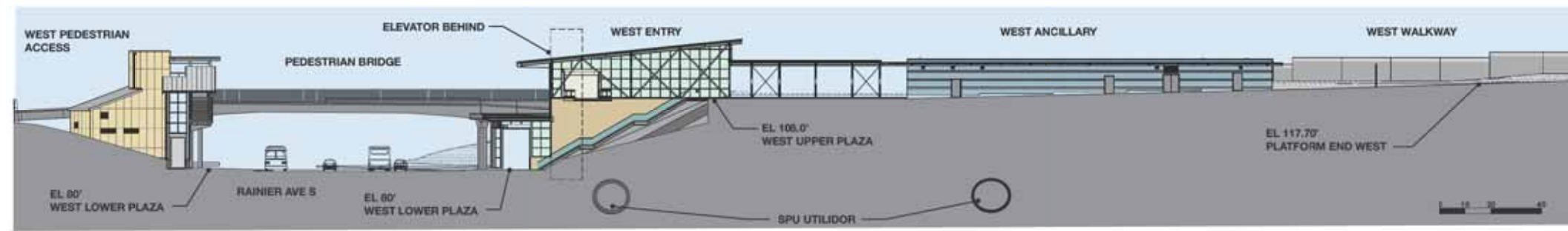
Judkins Park Station

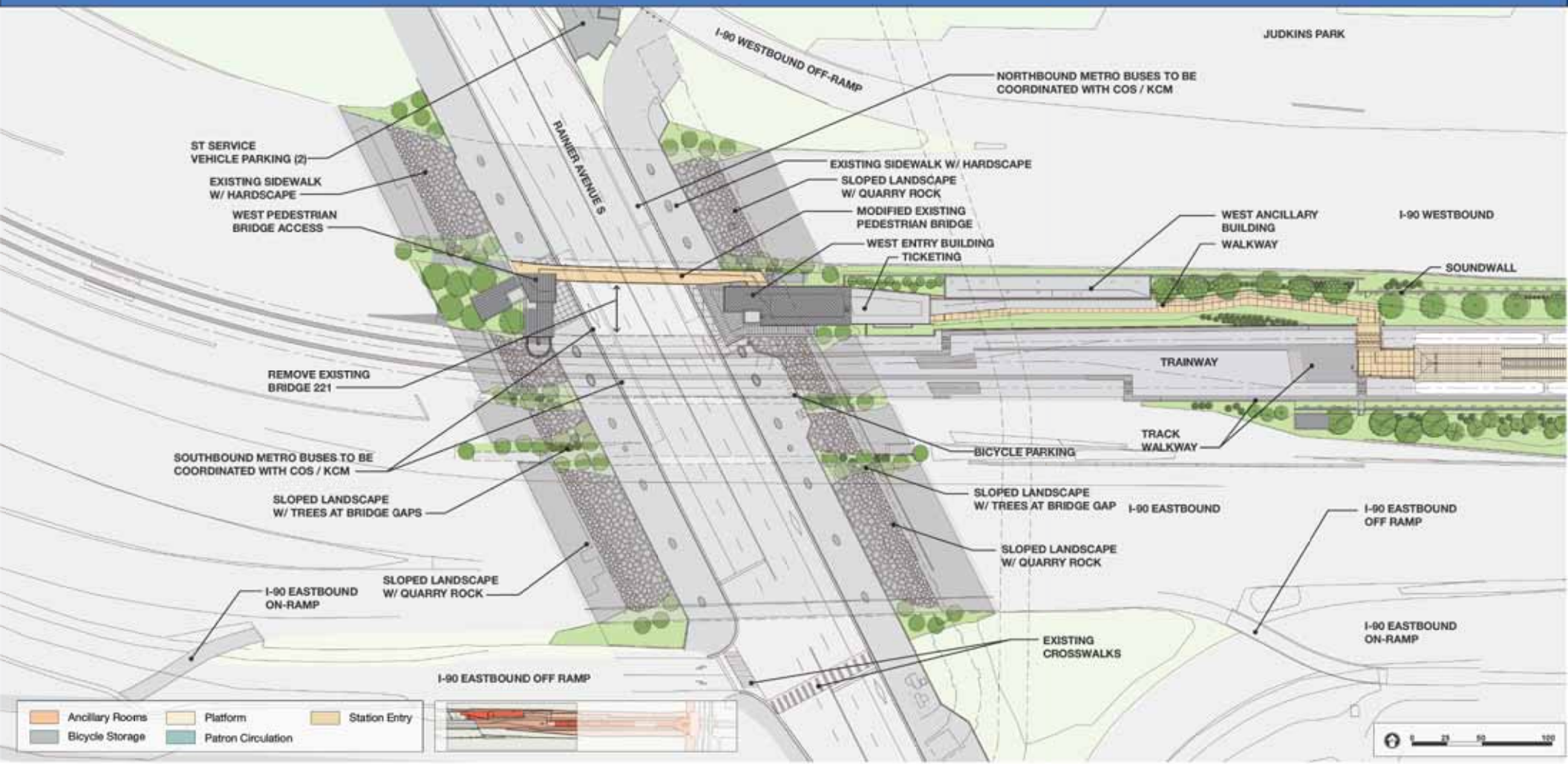


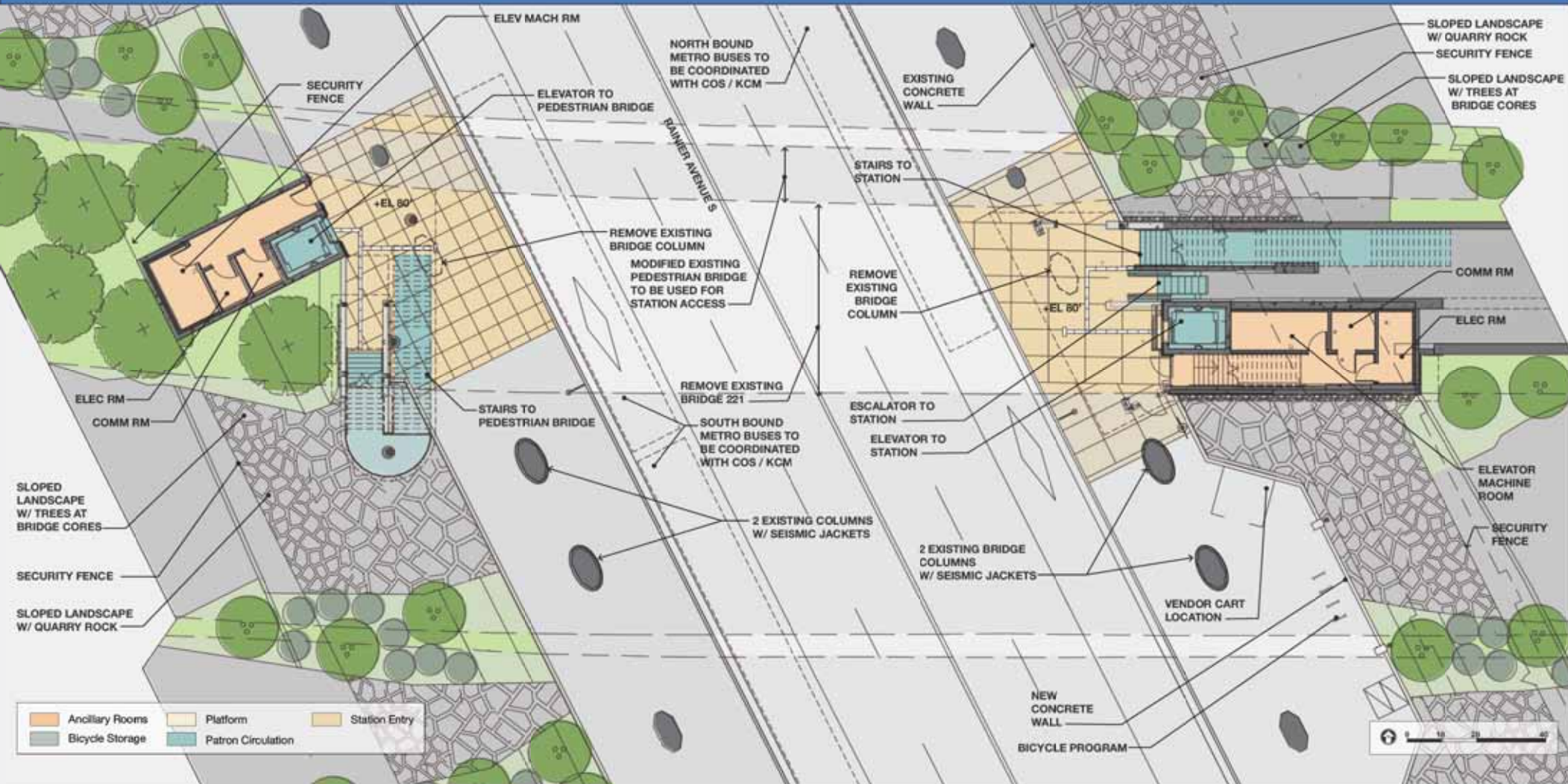








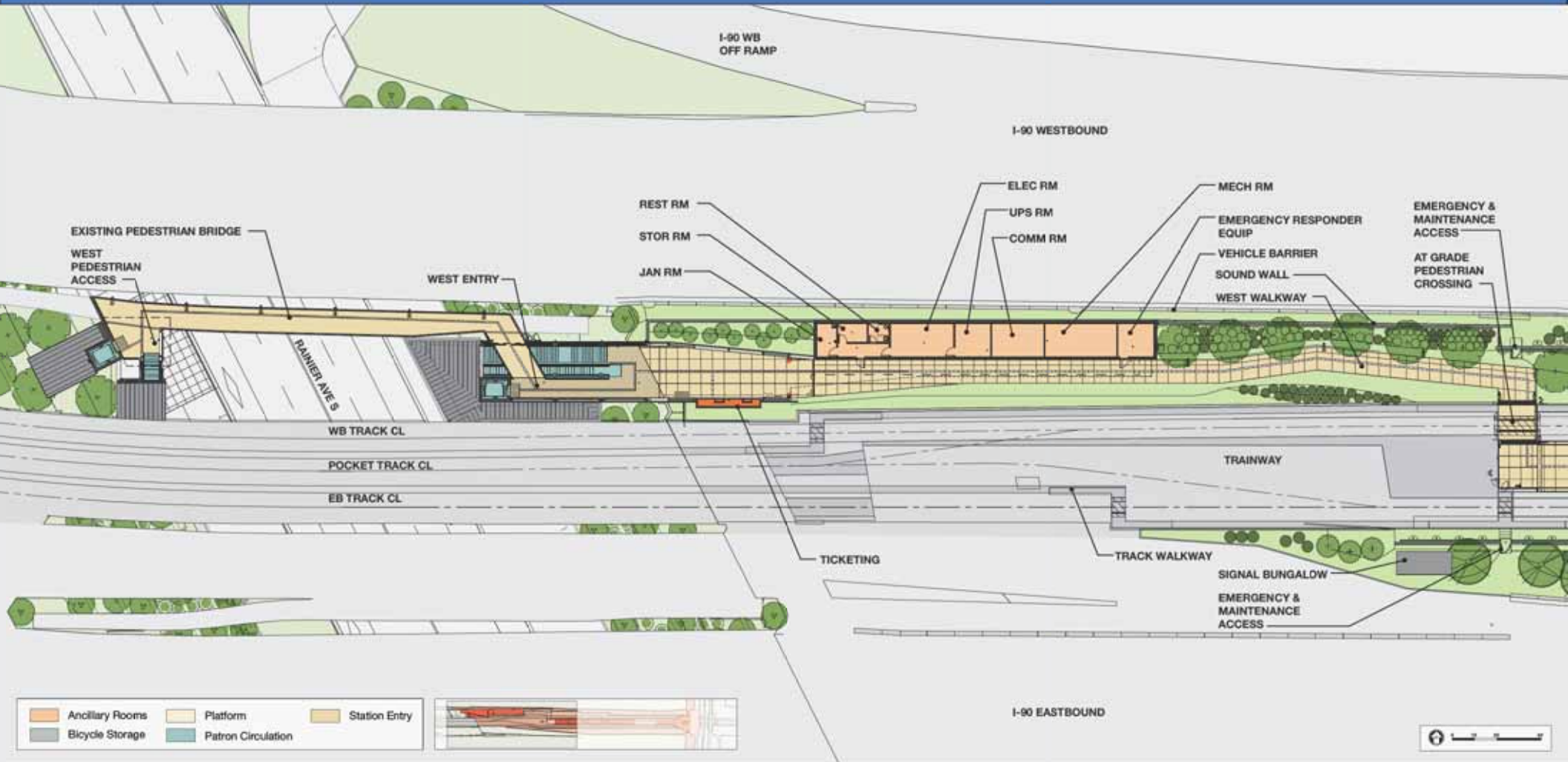


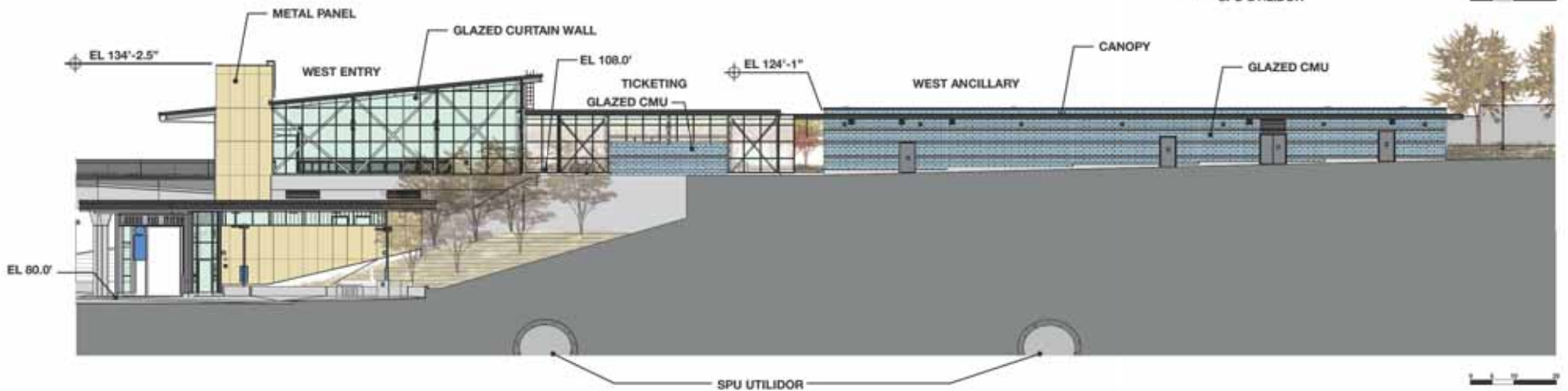


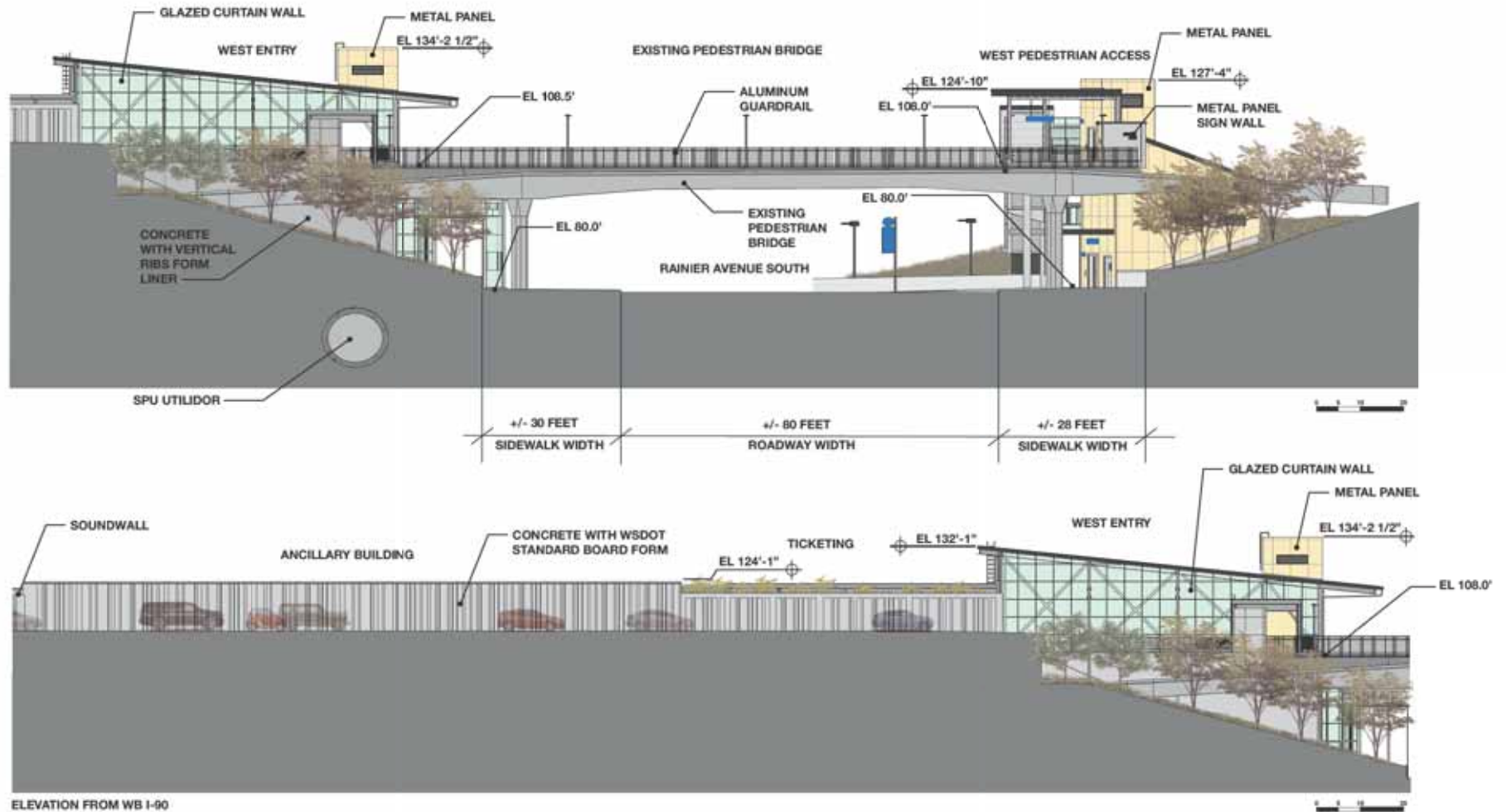


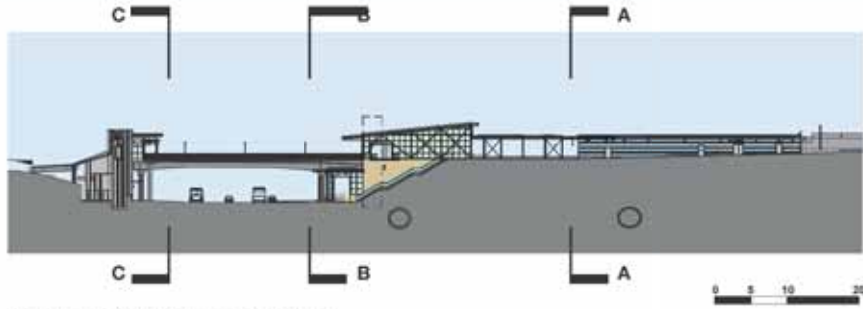




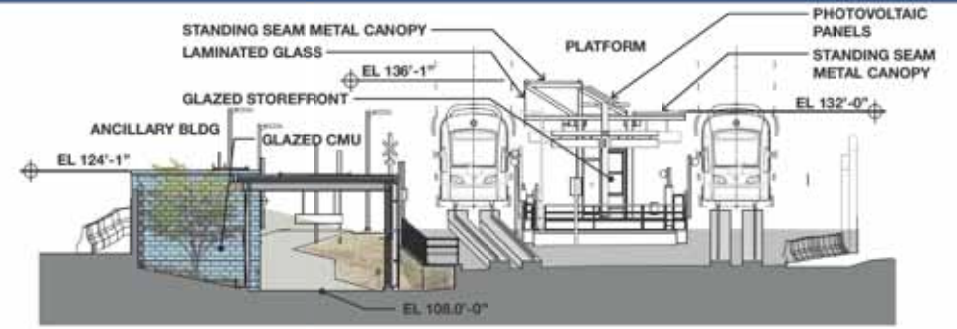








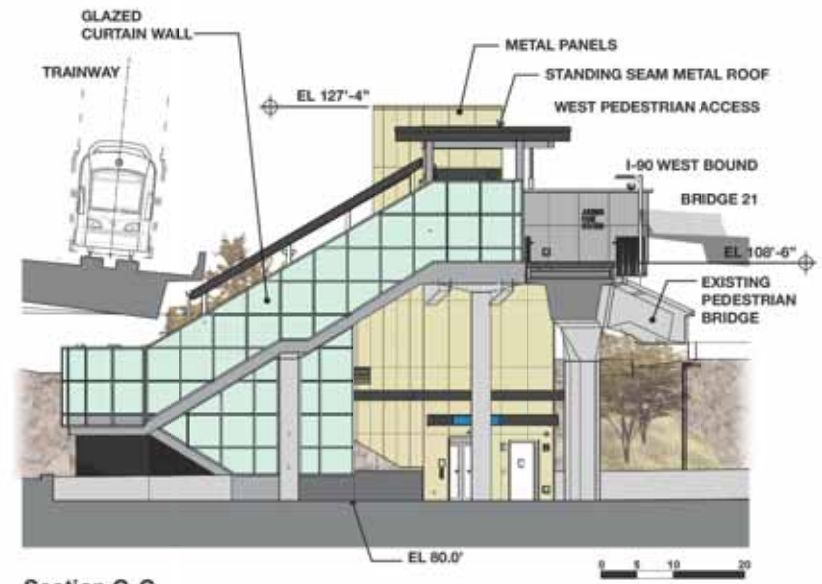
Key Longitudinal Site Section



Section A-A



Section B-B



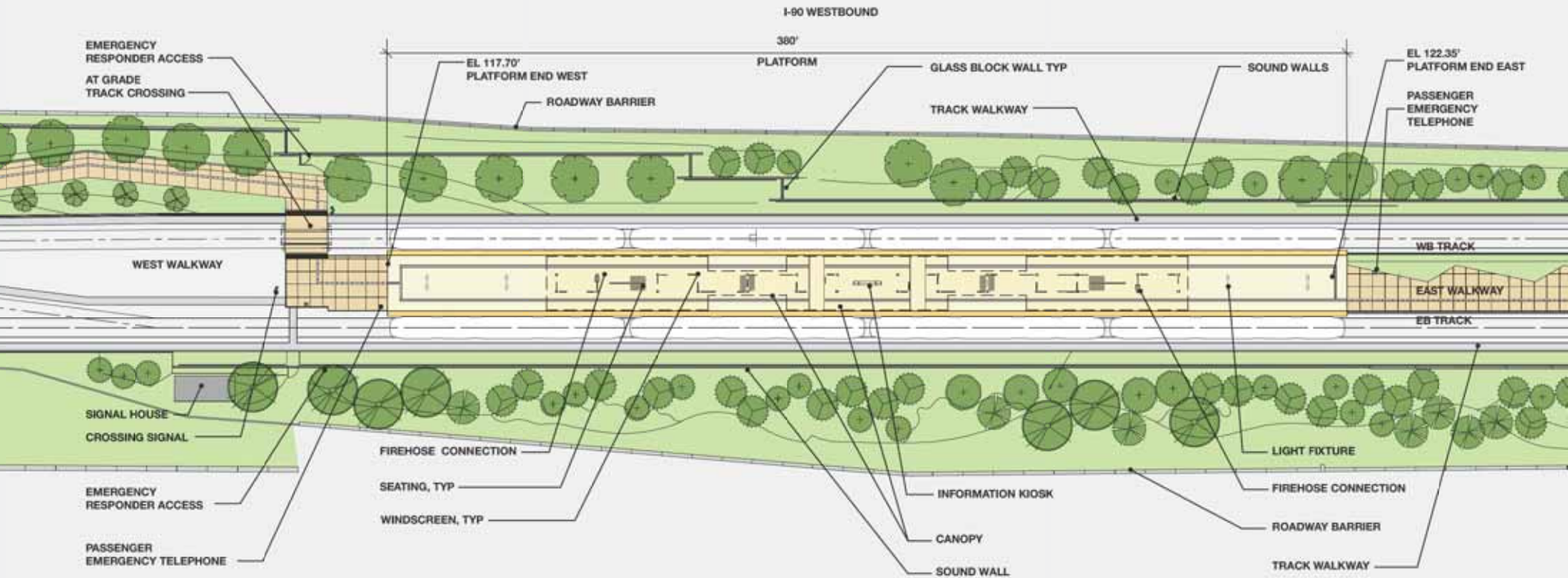
Section C-C











	Ancillary Rooms		Platform		Station Entry
	Bicycle Storage		Patron Circulation		



I-90 EASTBOUND

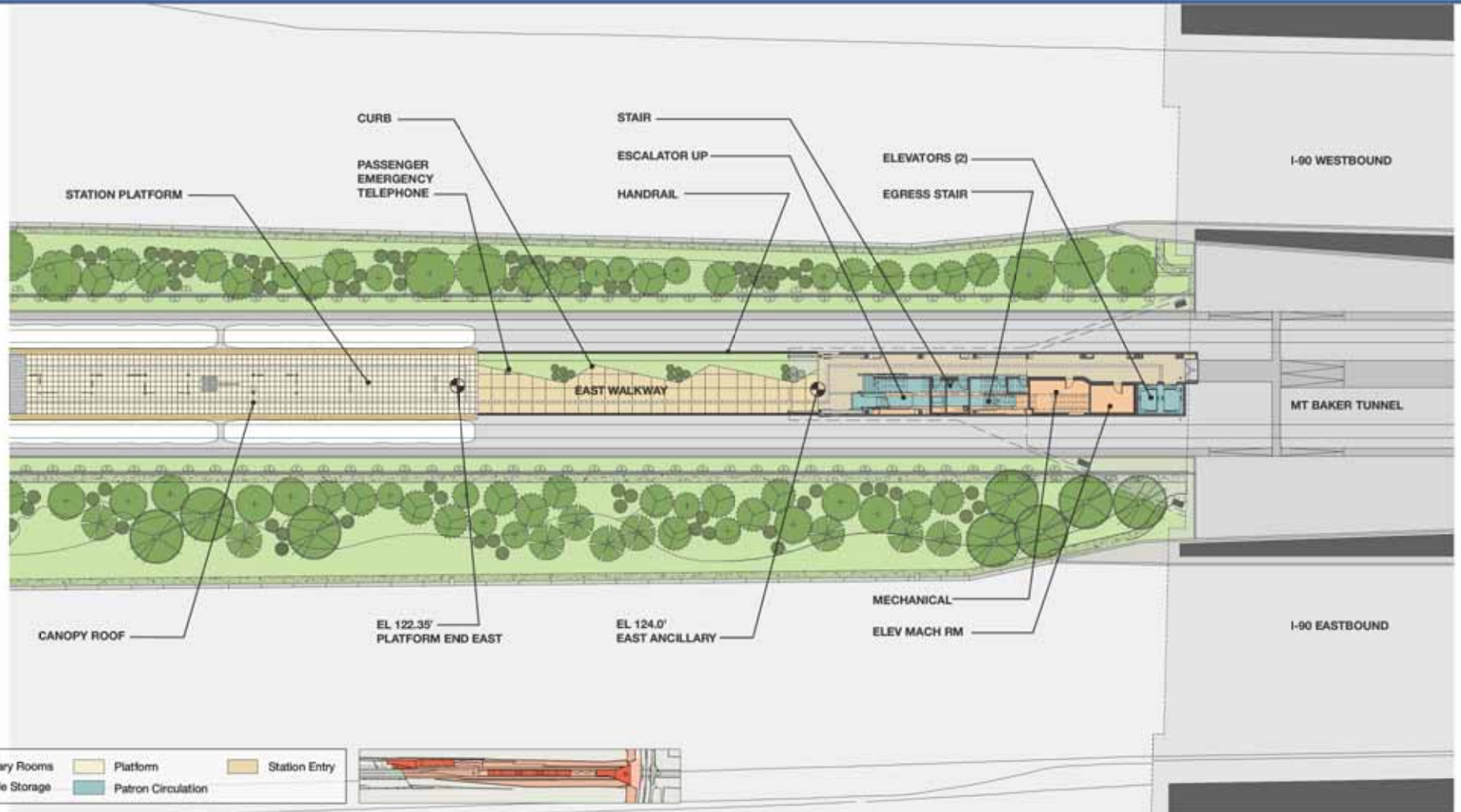
Scale in Feet: 0, 10, 20, 40

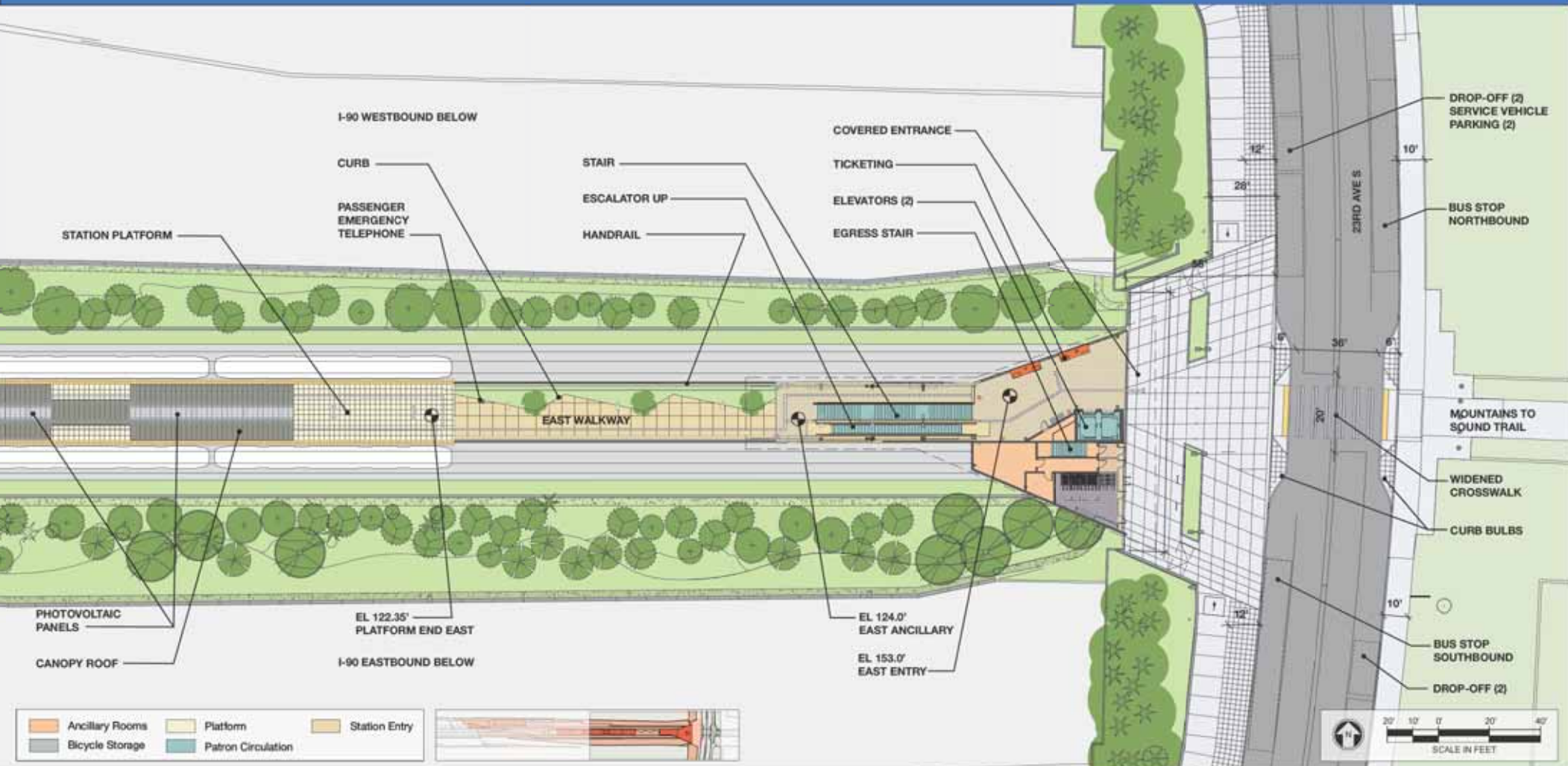


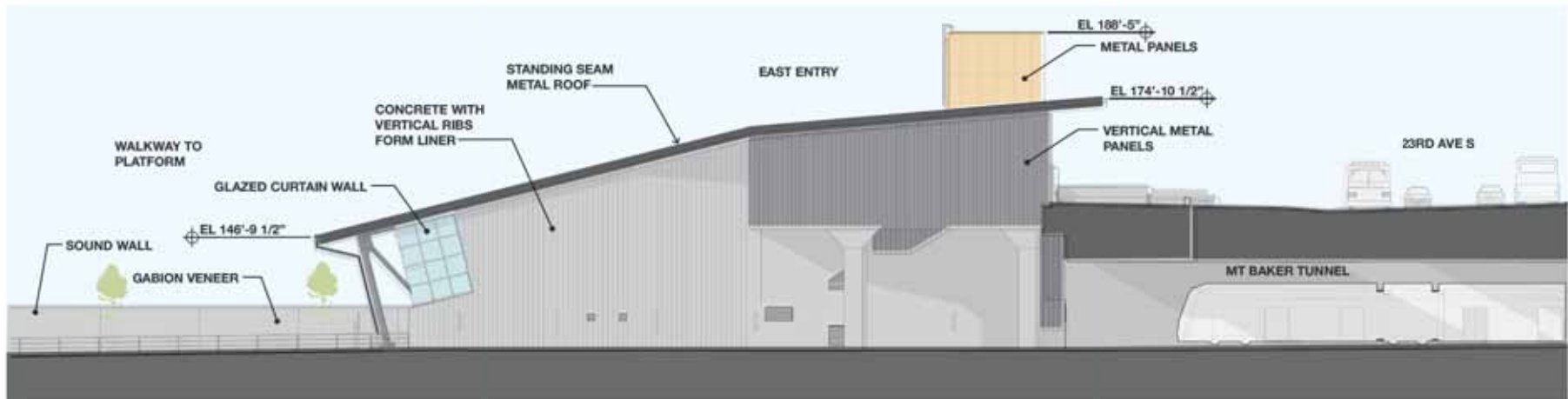
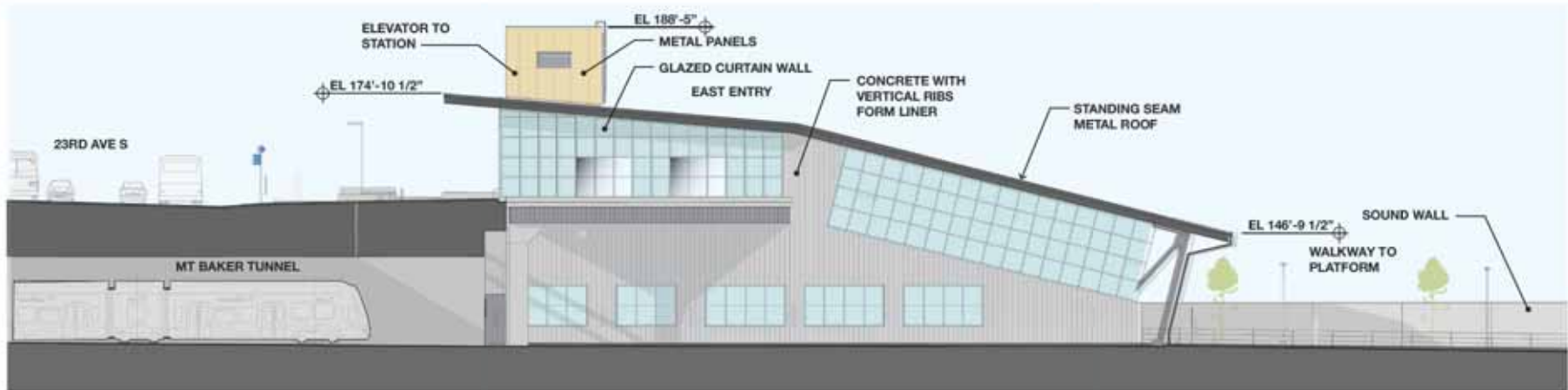


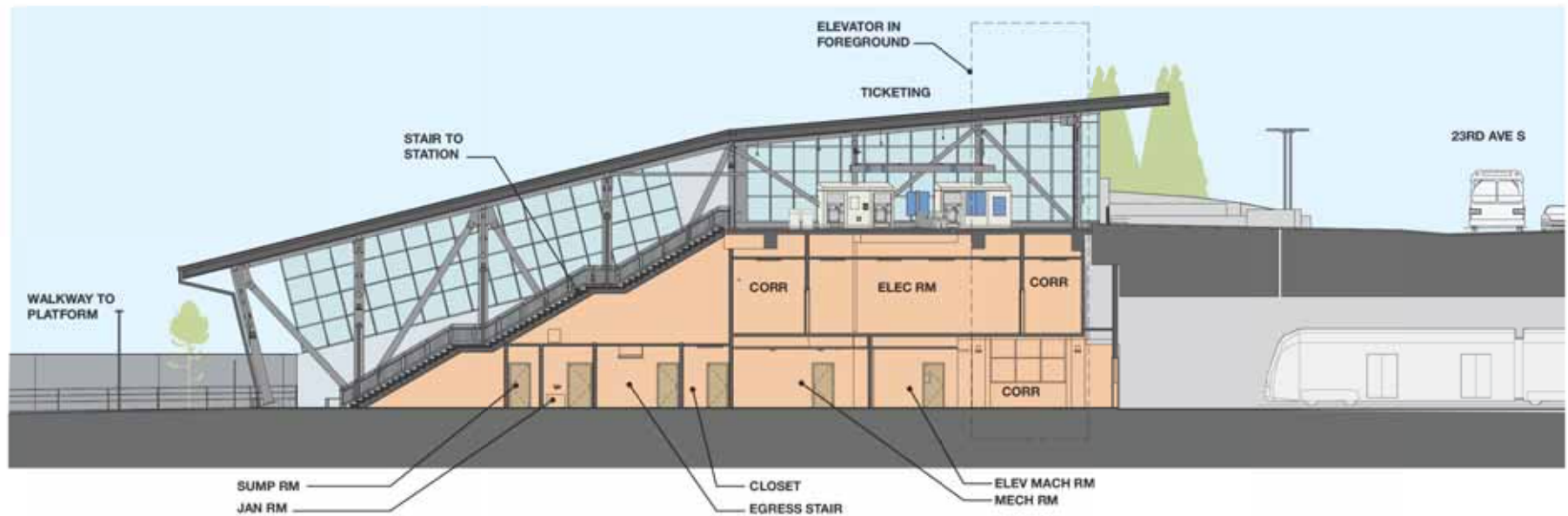












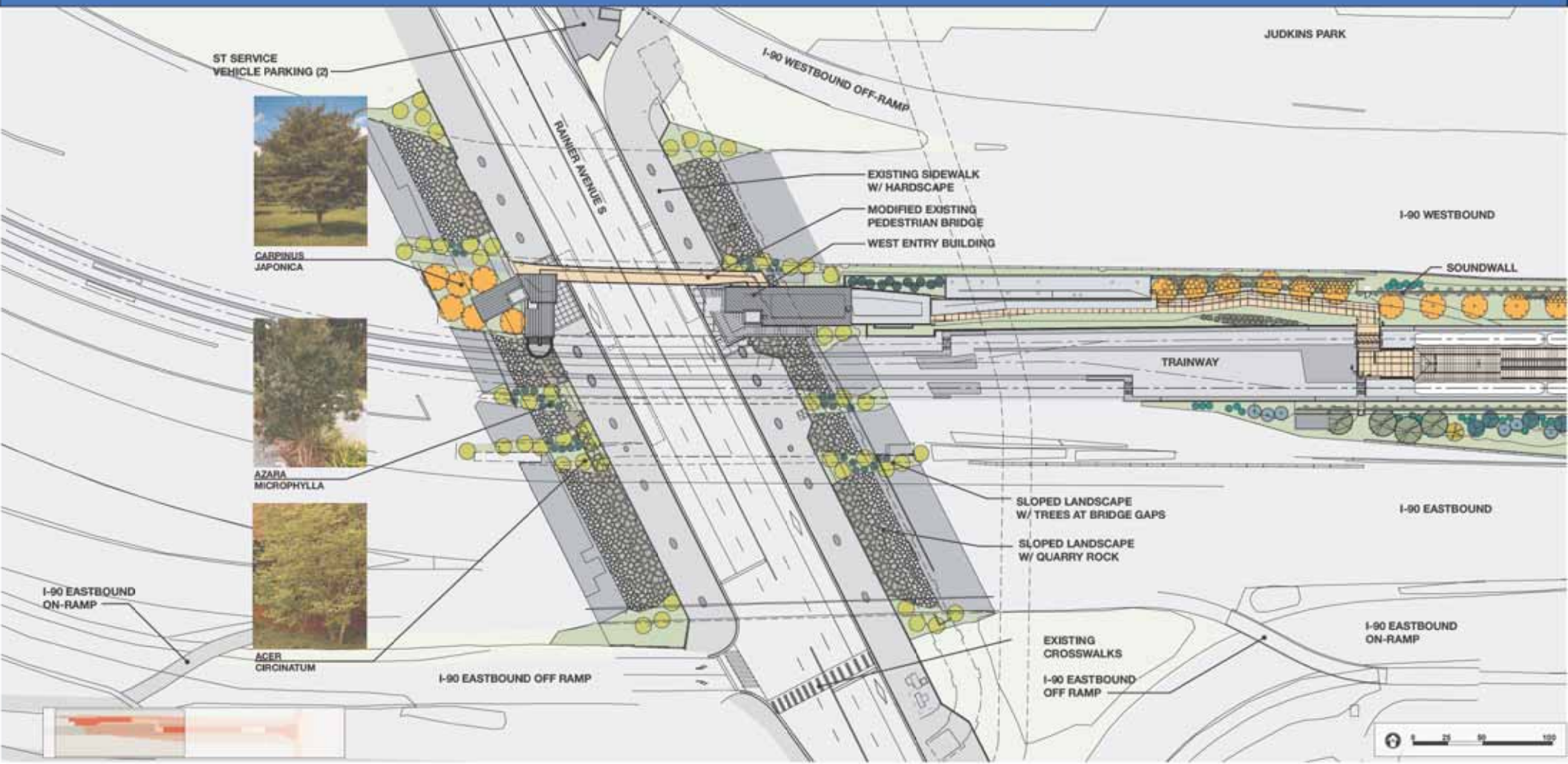


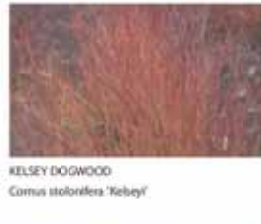




Judkins Park Station

Landscape Design









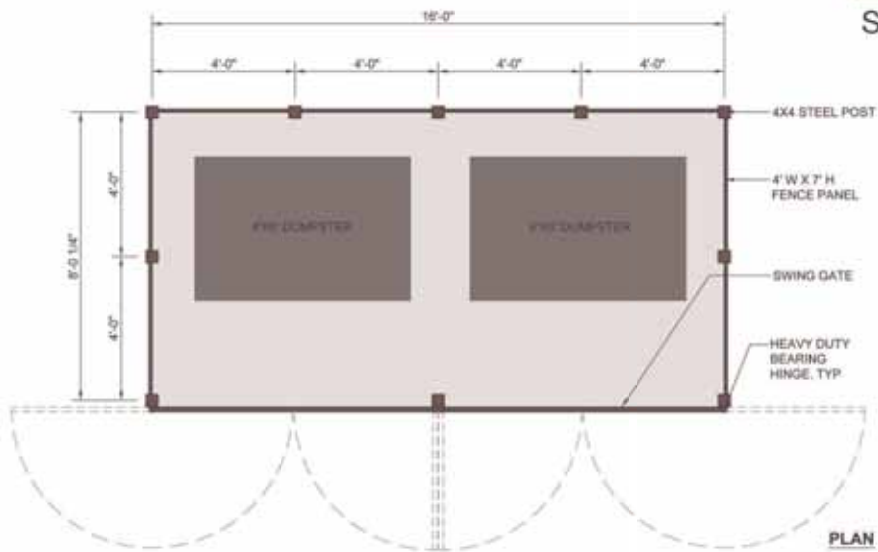
KEY MAP



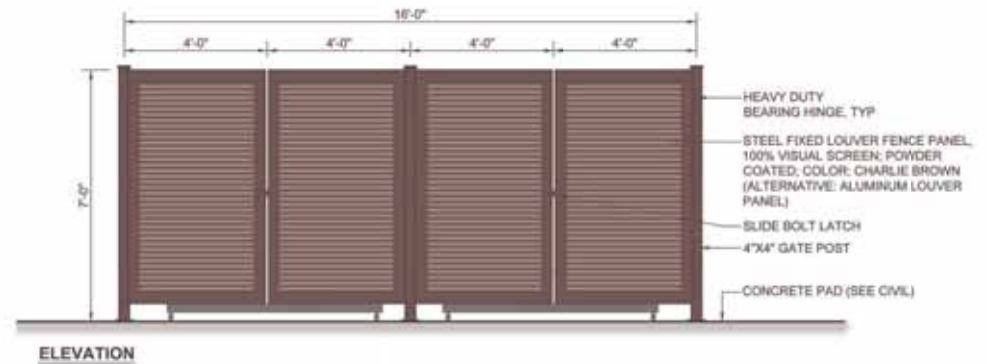
SWING GATE

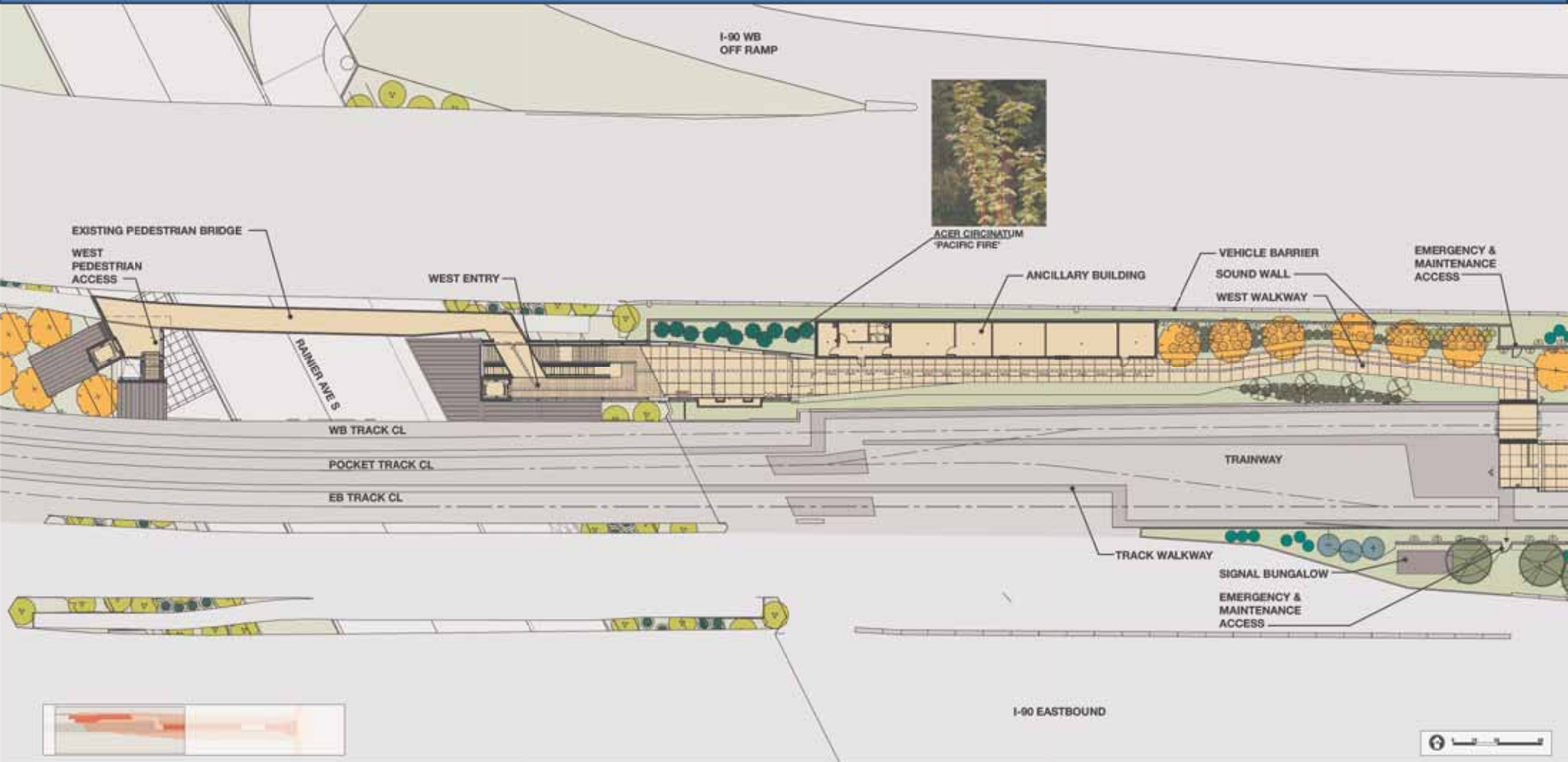


STEEL LOUVERS
100% VISUAL SCREEN



TRASH ENCLOSURE







PACIFIC FIRE VINE MAPLE
Acer circinatum
Pacific Fire®



INCENSE CEDAR
Calocedrus decurrens



JAPANESE HORNBEAM
Carpinus japonica



PYRAMIDAL EUROPEAN HORNBEAM
Carpinus betulus 'Fastigiata'



EDDIE'S WHITE WONDER DOGWOOD
Cornus nuttallii
Eddie's White Wonder®



SWEETGUM
Liquidambar styraciflua



JAPANESE BLACK PINE
Pinus thunbergii



SPIRICEBERRY
Amelanchier alnifolia



ARCTIC SUN REDTWIG DOGWOOD
Cornus sanguinea 'Cairo'



RELSEY DOGWOOD
Cornus stolonifera 'Yakety'



DWARF WINGED EUONYMUS
Euonymus alatus 'Compactus'



LITTLE MOSES BURNING BUSH
Euonymus alatus 'Little Moses'



MOUNT VERNON LAUREL
Prunus laurocerasus 'Mount Vernon'



ZABEL'S LAUREL
Prunus laurocerasus 'Zabeliana'



RUGOSA ROSE
Rosa rugosa



DWARF SWEETBOX
Sarcococca hookeriana humilis



COMMON SNOWBERRY
Symphoricarpos albus



EVERGREEN HUCKLEBERRY
Vaccinium ovatum



EPIMEDIUM
Epimedium pinnatifidum



SISAL
Gaillardia sp.



CREeping OREGON GRAPE
Mahonia repens



LOW OREGON GRAPE
Mahonia nervosa



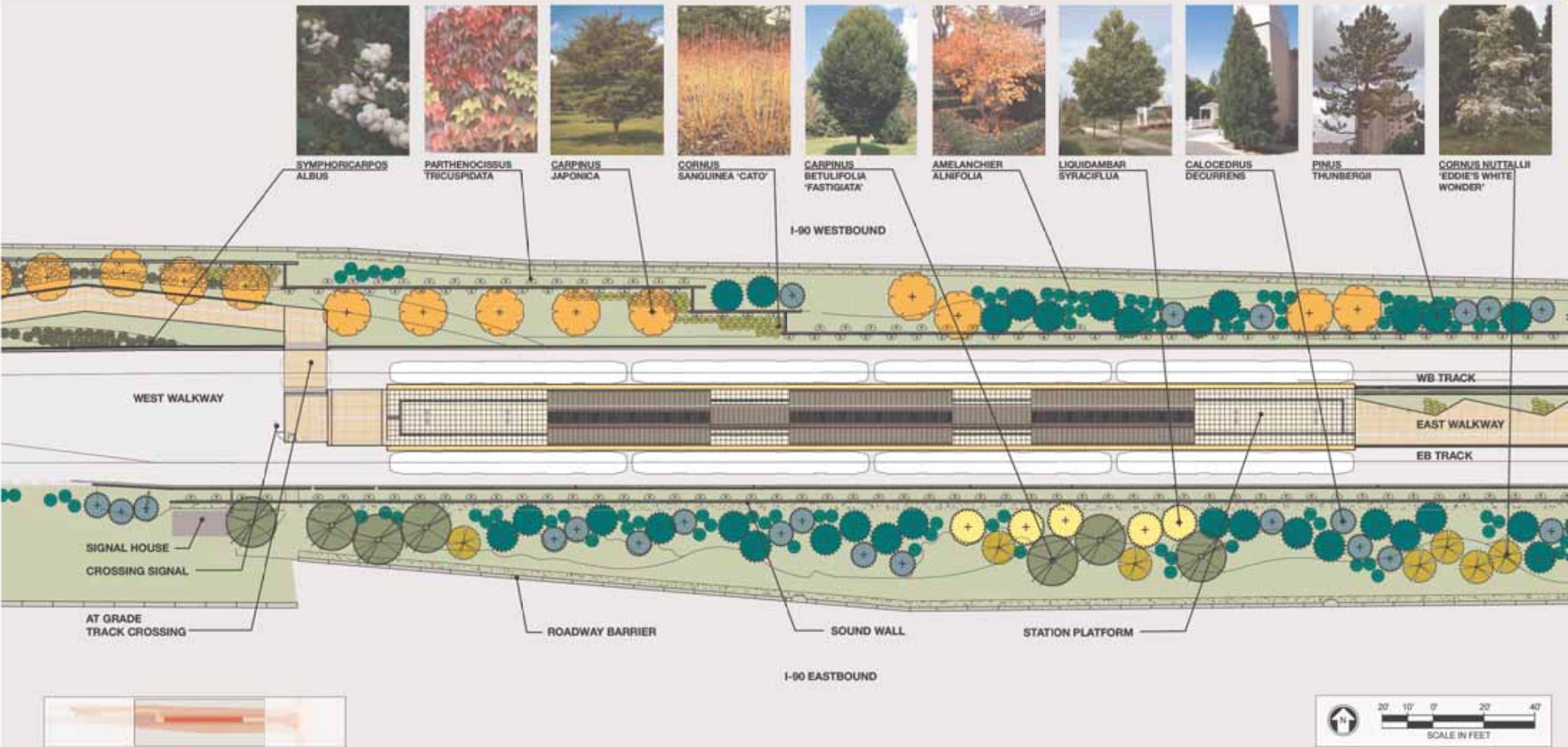
SWORD FERN
Polystichum muntonii



BOSTON IVY
Parthenocissus tricuspidata



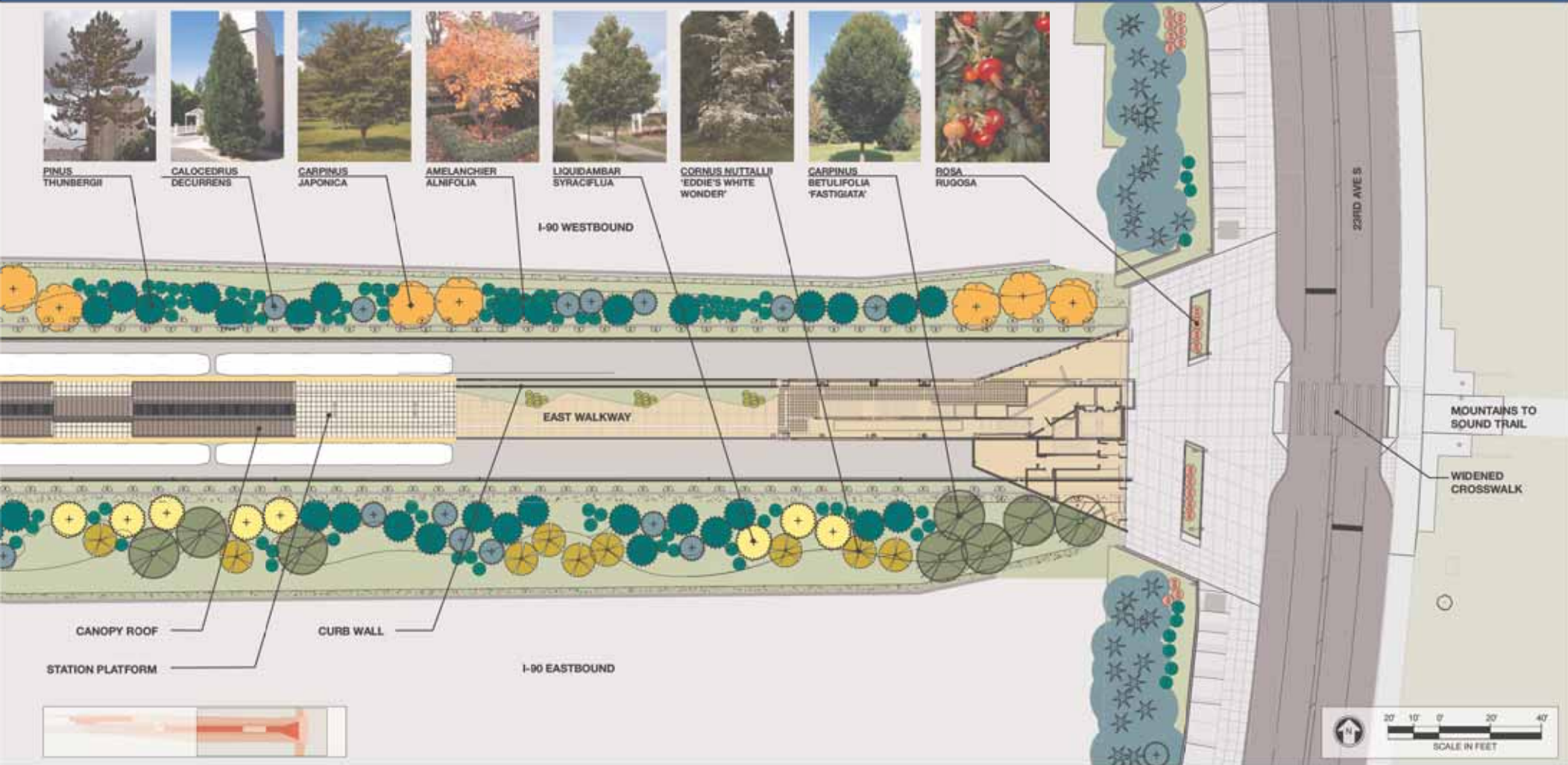
PLATFORM - LANDSCAPE PLAN







PINUS THUNBERGII
CALOCEDRUS DECURRENS
CARPINUS JAPONICA
AMELANCHIER ALNIFOLIA
LIQUIDAMBAR SYRACIFLUA
CORNUS NUTTALLII 'EDDIE'S WHITE WONDER'
CARPINUS BETULIFOLIA 'FASTIGIATA'
ROSA RUGOSA







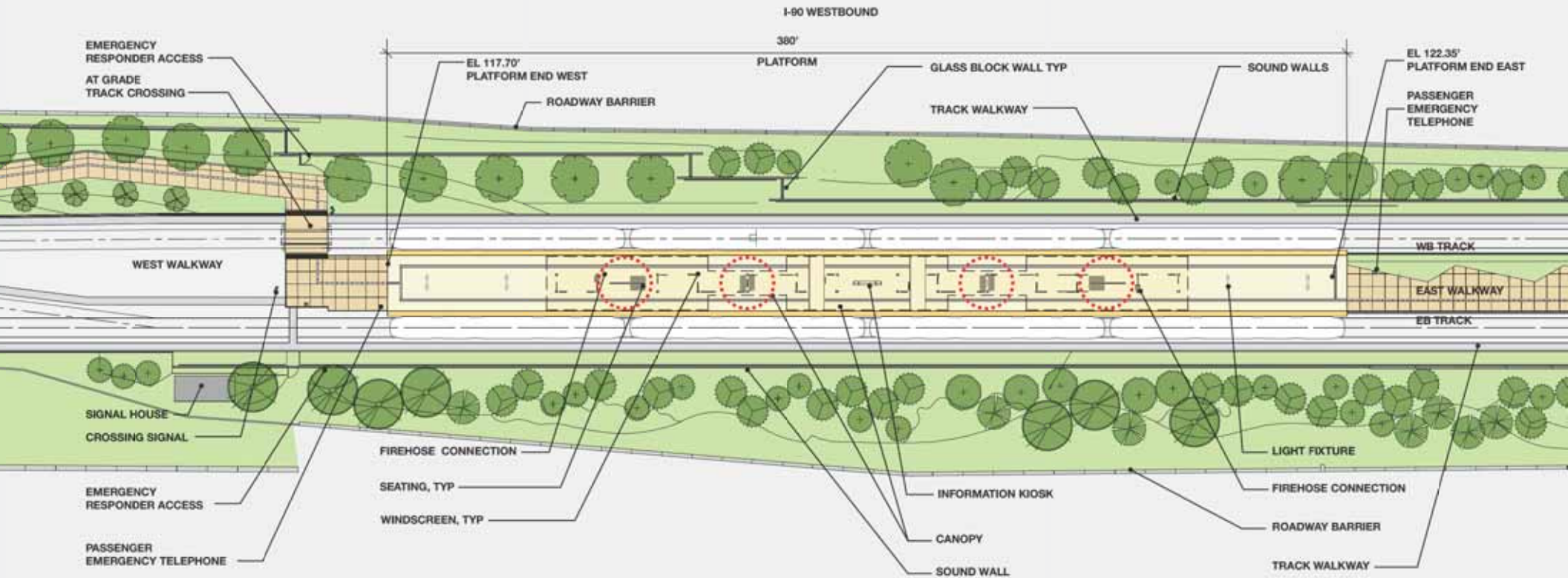


Judkins Park Station

STart: Station Art







Ancillary Rooms	Platform	Station Entry
Bicycle Storage	Patron Circulation	



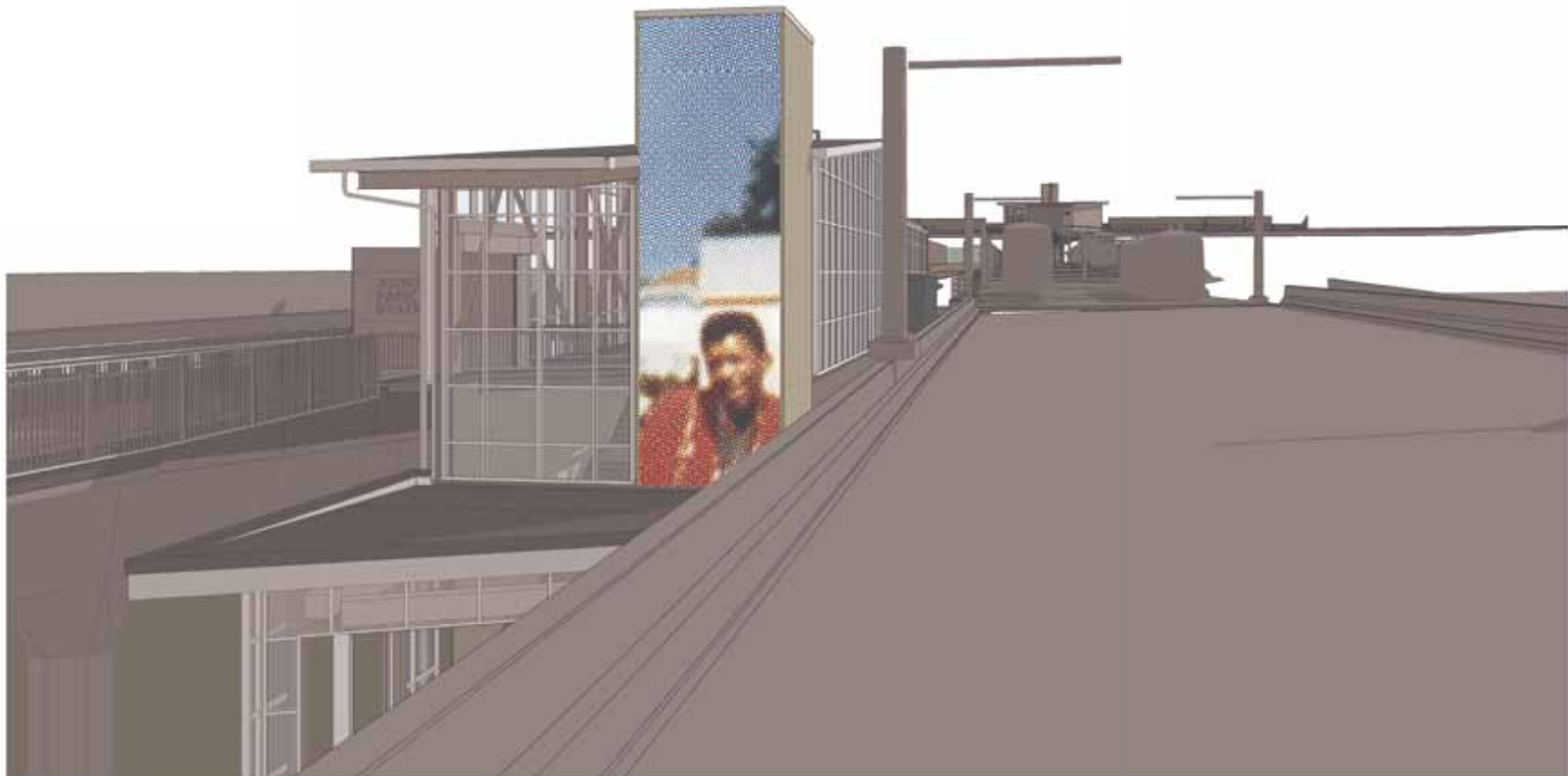
I-90 EASTBOUND

PLATFORM ARTWORK LOCATIONS

Scale in Feet: 0, 20, 40

North Arrow









Questions and Comments