

# GARFIELD SUPER BLOCK PARK IMPROVEMENTS

## 90% DESIGN



**SiteWorkshop**  
LANDSCAPE ARCHITECTURE

SEATTLE DESIGN COMMISSION | 7 NOVEMBER 2024 | GARFIELD SUPER BLOCK COALITION, SEATTLE PARKS & RECREATION, SITE WORKSHOP



# SDC - 90% DESIGN

---

- 1 | Project Overview**
- 3 | 90% Design**
- 4 | Access + Materials**
- 5 | Architecture**
- 6 | Art Plan**
- 7 | Funding**

# JULY 18, 2024 60% SDC Conditions + Recommendations

## Conditions

- 1 Create **architectural relationships** with the **existing structures** at this location (Community Center, High School, etc)
- 2 Establish architectural relationships between the **comfort station** and **picnic shelter**
- 3 Advance the **wayfinding** plan to include stronger relationships between the **art plan** and the various **paving strategies**

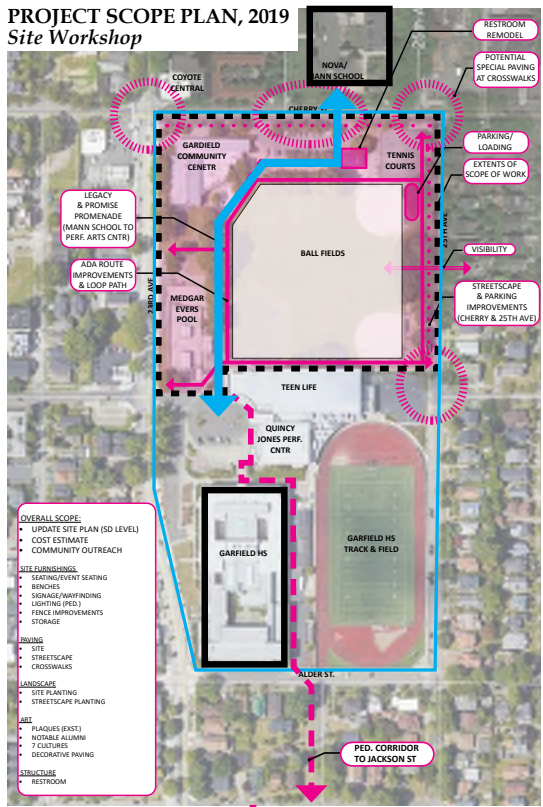
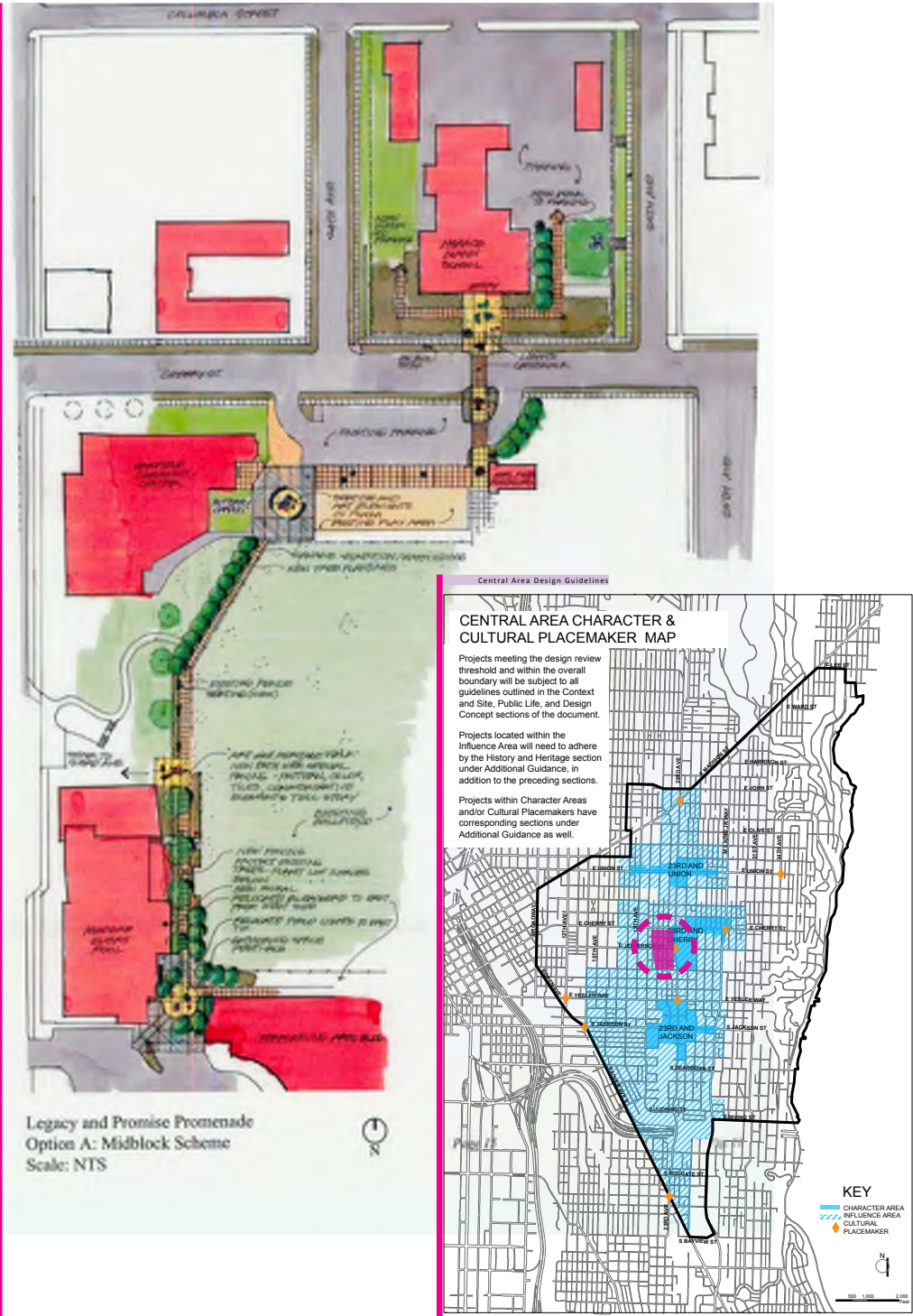
## Recommendations

- 1 Continue to articulate/strengthen the **site narrative** by bringing the project elements together. A way to achieve this may be to expand and **strengthen the role played by the 'blue line' path treatment**.
- 2 Continue to strengthen the **pedestrian experience around the block**.
- 3 Wayfinding is important yet advocating for **improved crossings** will better support access.
- 4 Consider the relationship between the **internal loop** being created and the **larger loop** provided by the **surrounding rights of way and its related pedestrian system**.

# 1 | PROJECT OVERVIEW



# PROJECT HISTORY



2005-08: Garfield Super Block Master Plan and High School Renovation

2015-2019 Planning and Organization

2019 GSB Coalition Formed

2019-2020 Design, Advocacy and Fundraising

30% Design  
Feb 16 2023

60% Design  
March 7, 2024

60% Subcommittee  
July 18, 2024

90% Design  
November 7, 2024

Construction Starts

Construction

Park Reopens



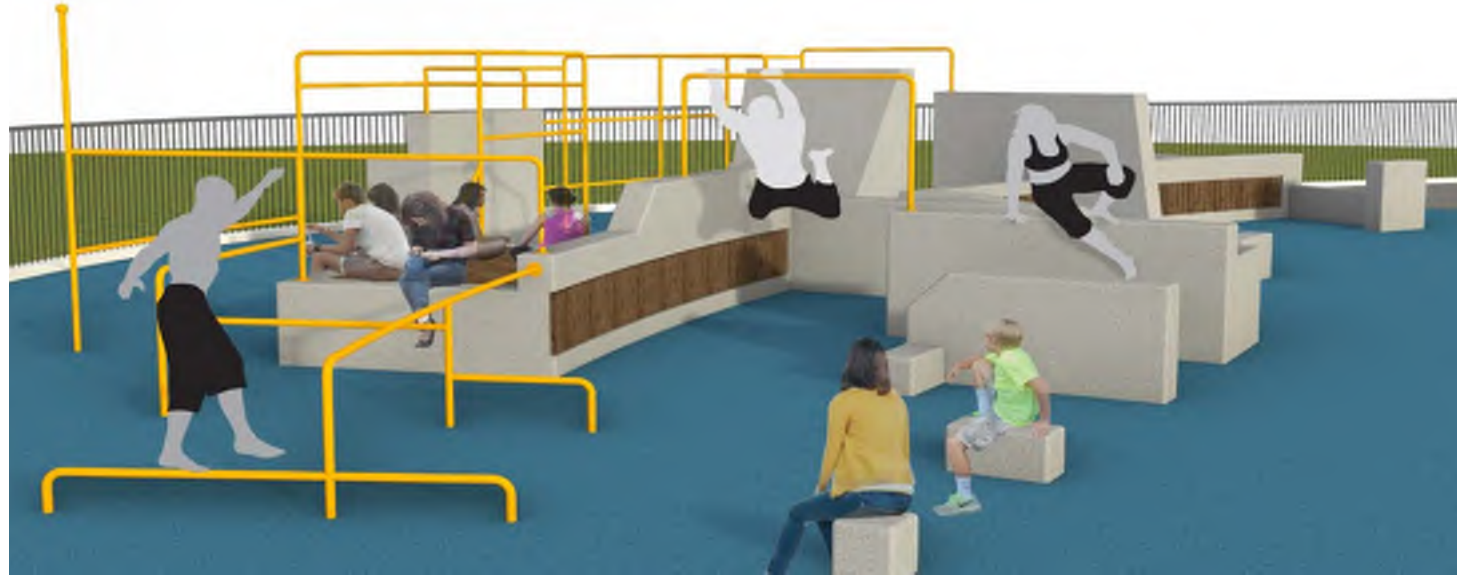
# CURRENT SITE PLAN

## Project Goals:

- Accessible Loop Path  
(High quality Materials - paving, furnishings)
- Play/Parkour/Recreation (All-ages)
- Covered gathering area
- Art along the Promenade
- New restroom
- Accessible entry at SE Corner

## 90% Design

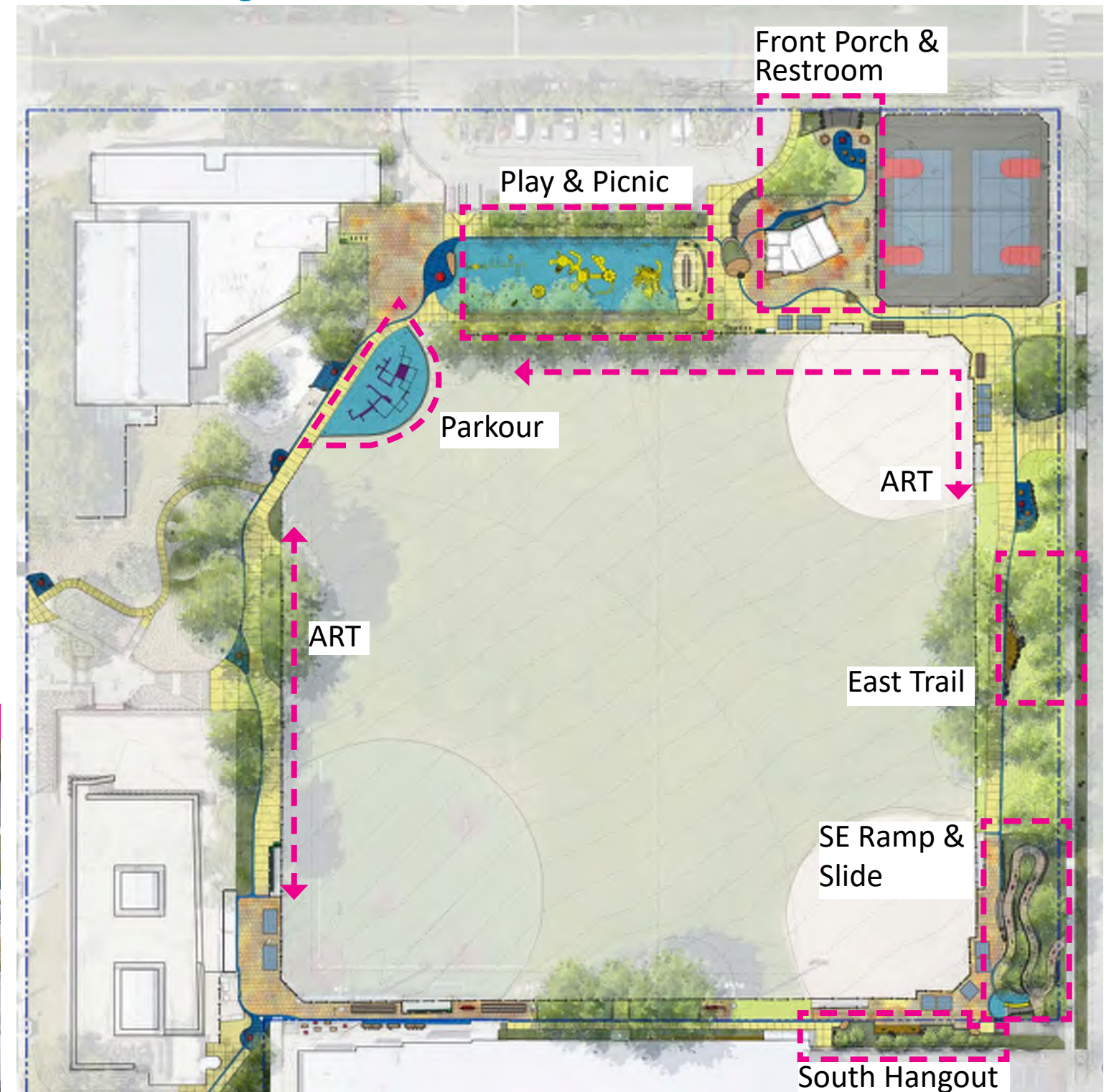
### PARKOUR - BID ADDITIVE#1



### HILL SLIDE



### ACCESSIBLE RAMP

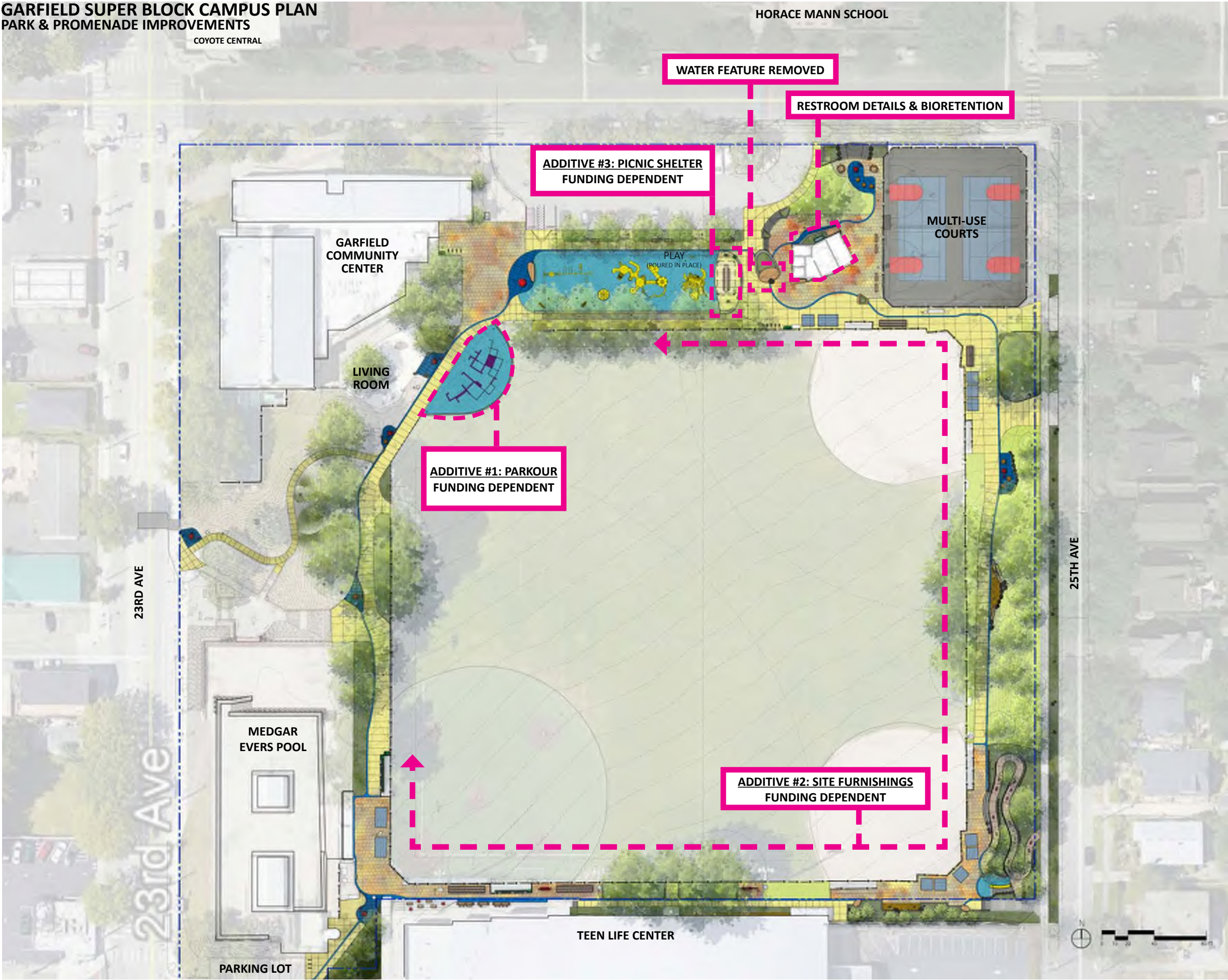


**3 | 90% DESIGN**



# OVERALL SITE PLAN

GARFIELD SUPER BLOCK CAMPUS PLAN  
PARK & PROMENADE IMPROVEMENTS  
COYOTE CENTRAL



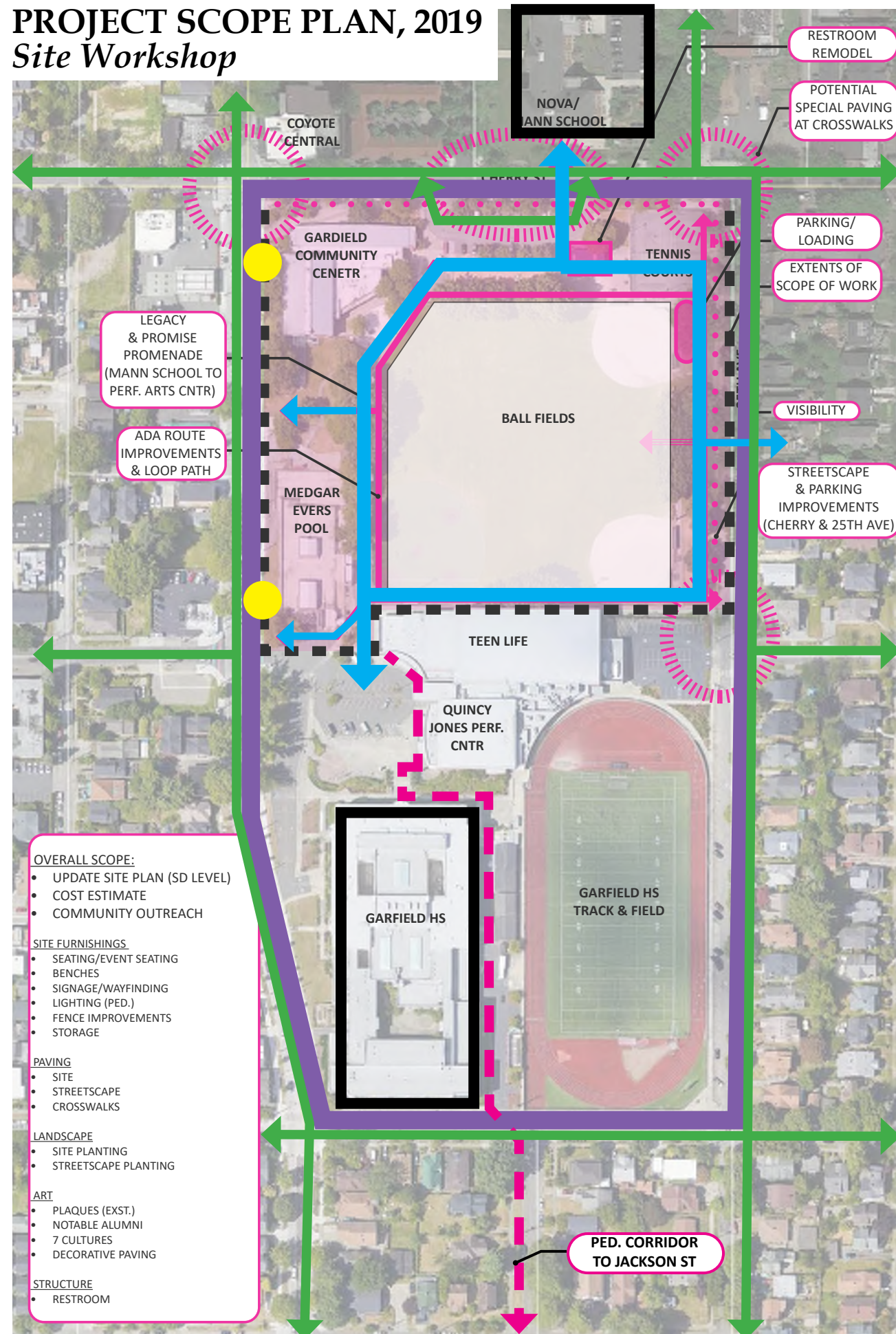


# 4 | ACCESS + MATERIALS

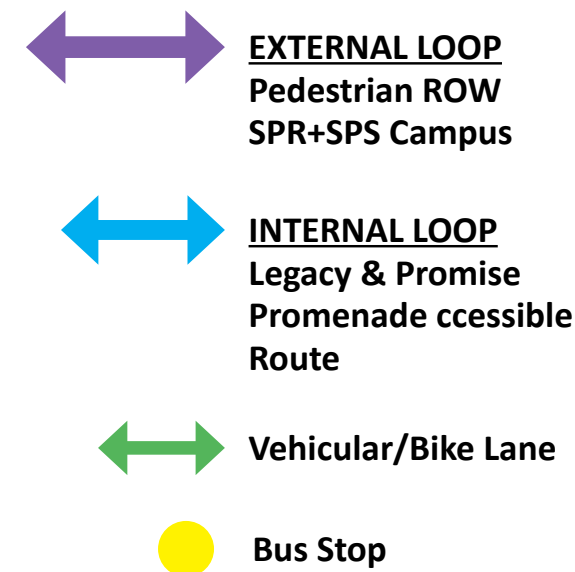


# ACCESS | SUPER BLOCK LOOP

## PROJECT SCOPE PLAN, 2019 Site Workshop



### Garfield Super Block



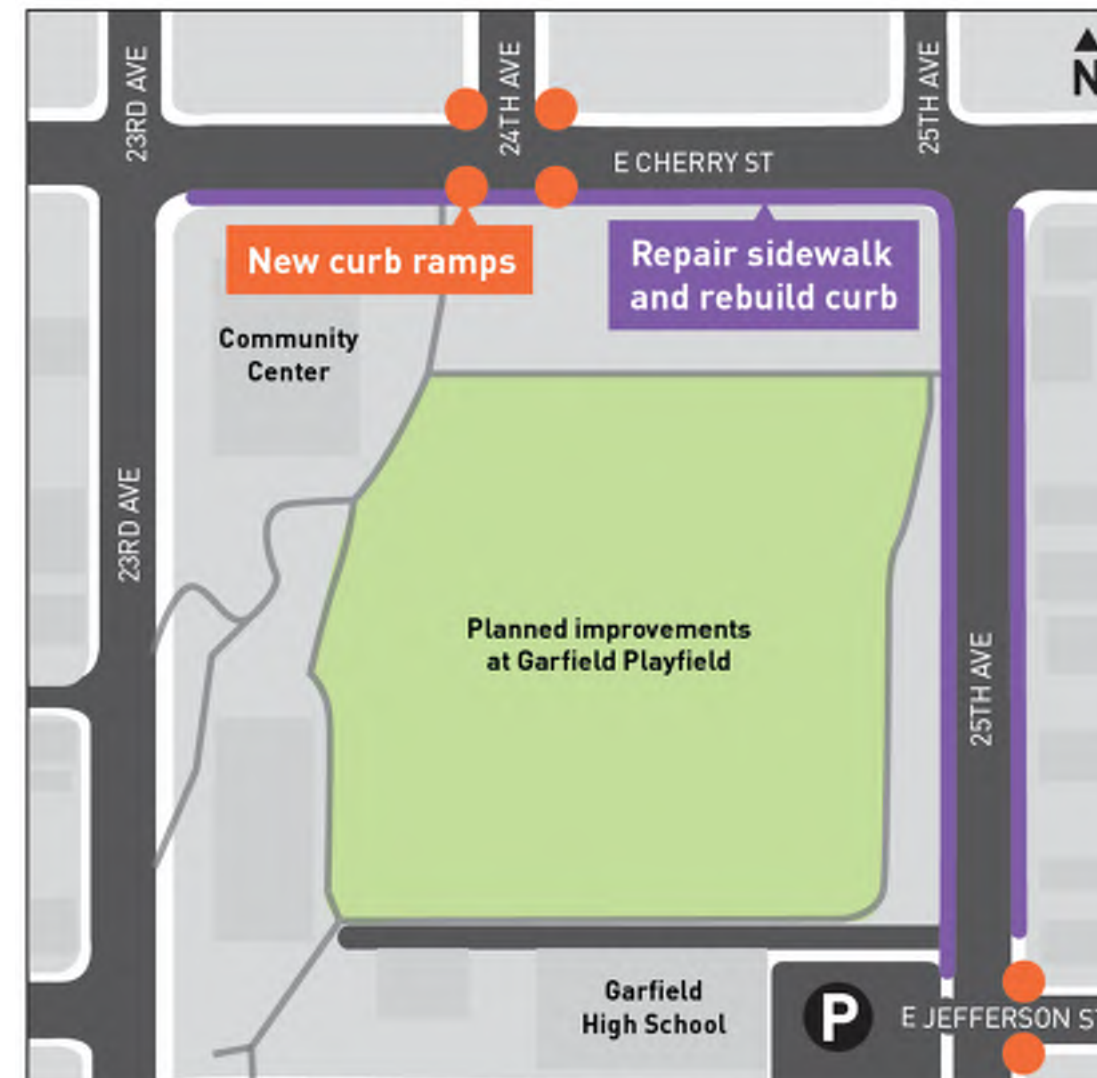
#### SDC RECOMMENDATION 2

Continue to strengthen the pedestrian experience around the block

#### SDC RECOMMENDATION 4

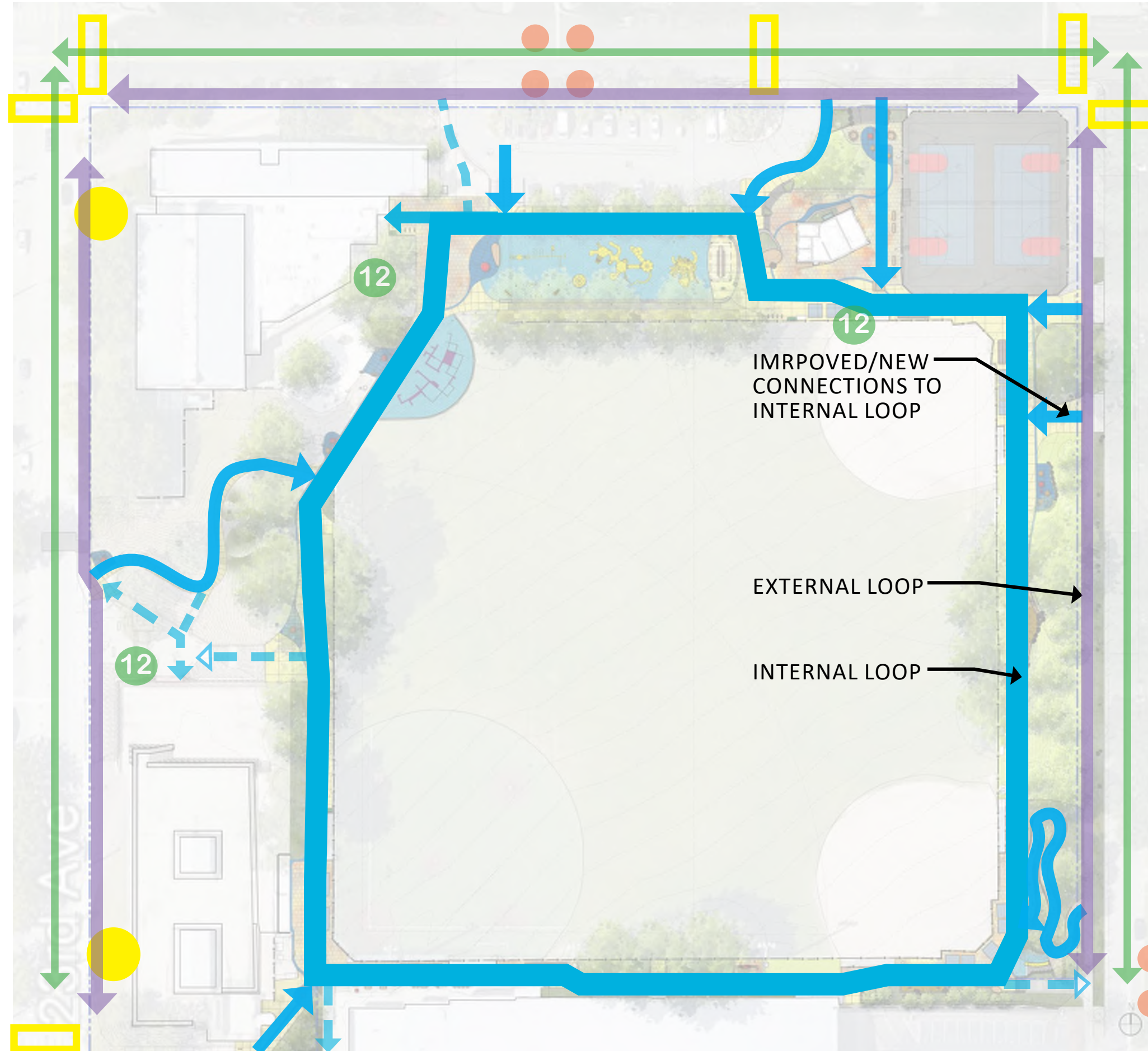
Consider the relationship between the internal loop being created and the larger loop provided by the surrounding rights of way and its related pedestrian system

### SDOT NSF Healthy Streets





# ACCESS | INTERNAL LOOP



## SDC RECOMMENDATION 3

Wayfinding is important yet advocating for **improved crossings** will better support access

## SDC RECOMMENDATION 4

Consider the relationship between the **internal loop** being created and the **larger loop** provided by the surrounding rights of way **and its related pedestrian system**

## Garfield Super Block

↔ **EXTERNAL LOOP**  
Pedestrian ROW  
SPR+SPS Campus

↔ **INTERNAL LOOP**  
Legacy & Promise  
Promenade ccessible  
Route

↔ Existing Connections

↔ Vehicular/Bike Lane

12 Bike Parking

Bus Stop

Curb Ramps

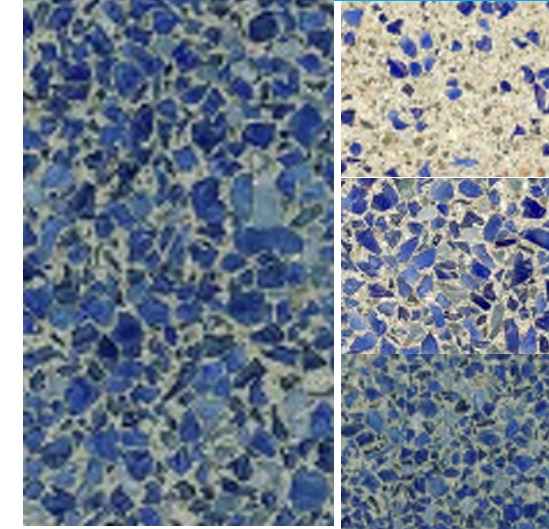
Crosswalk





# INTERNAL LOOP | PAVING

## BLUE BAND GRADIENT

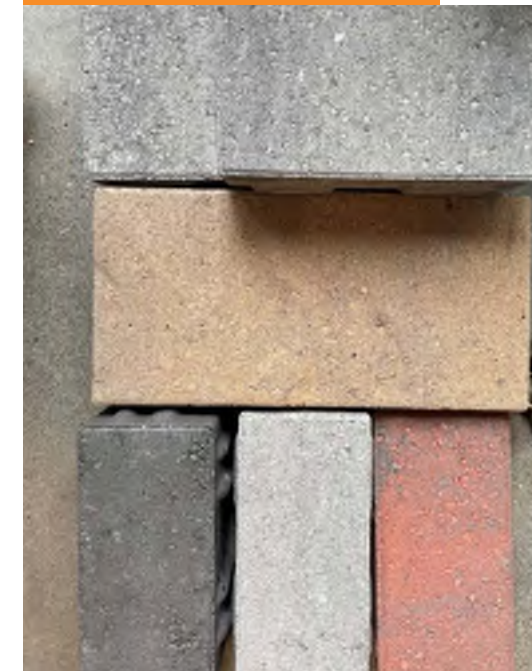


Bomanite - Concrete + Sea Glass

**INTERNAL LOOP**  
1' Wide Flush Concrete Band at outer edge

**GRADIENT**  
10-90% sea glass concentration. The amount of sea glass increases as the Band approaches Art locations.

## GATEWAY PLAZAS



Pervious Pavers

(4) CORNER ENTRYWAYS

## PATHWAY

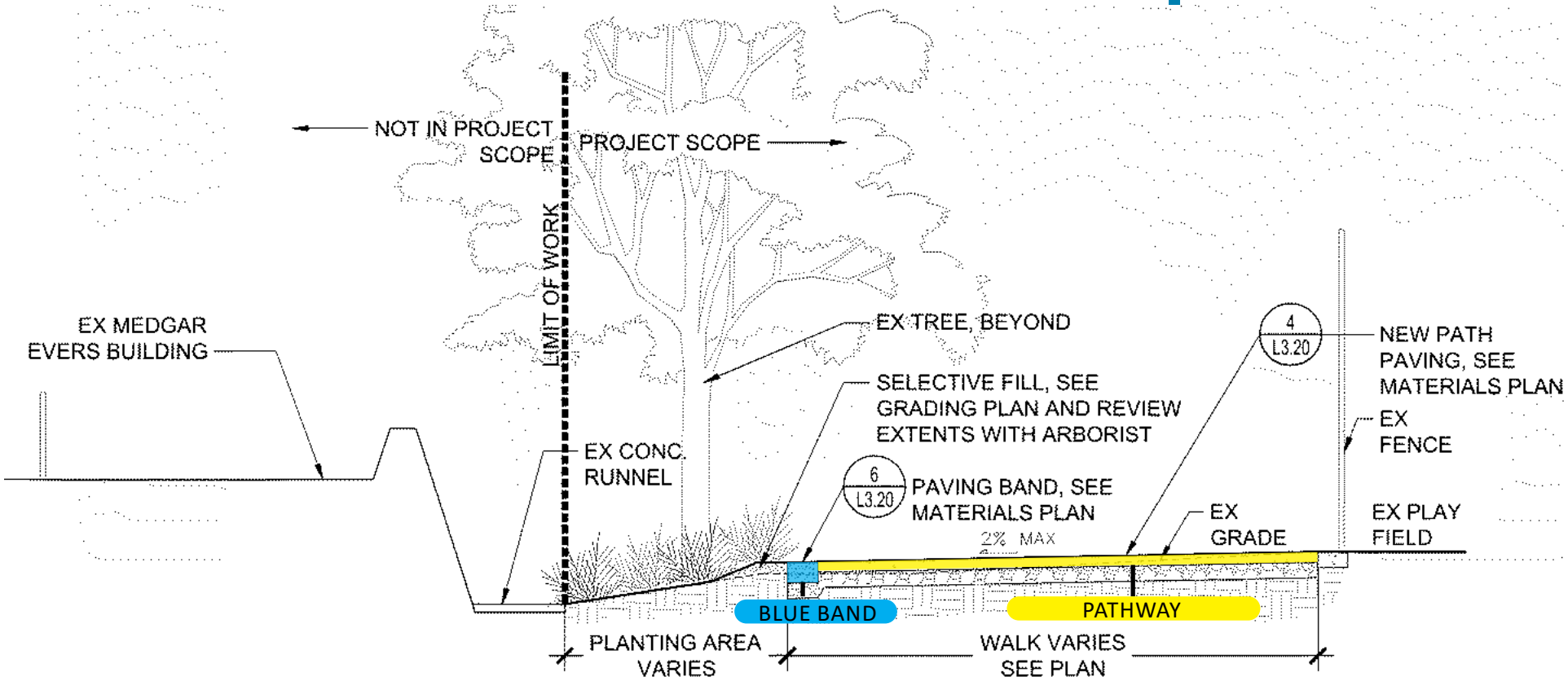
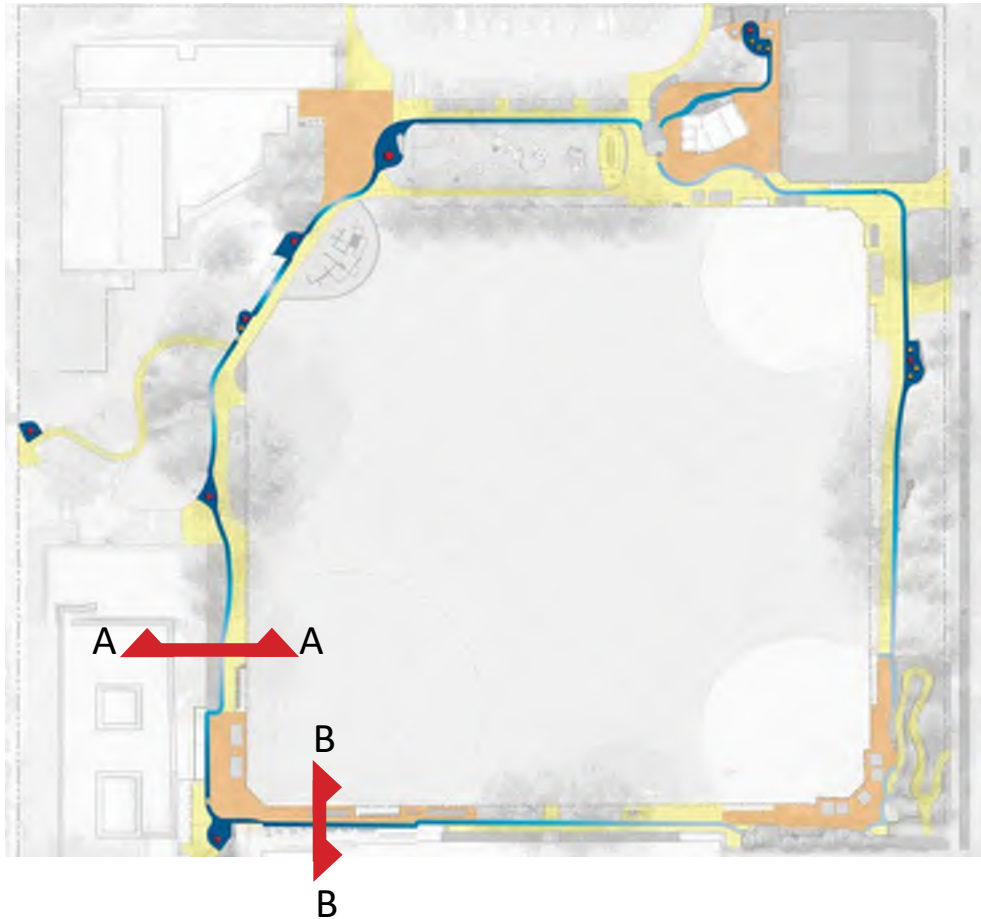


Pervious Concrete

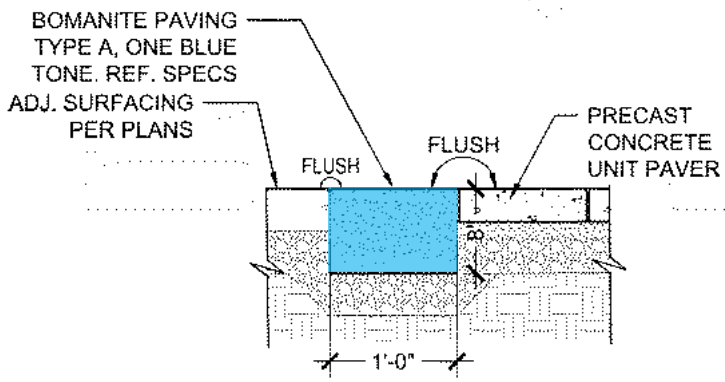
**INTERNAL LOOP**  
Accessible Pathways



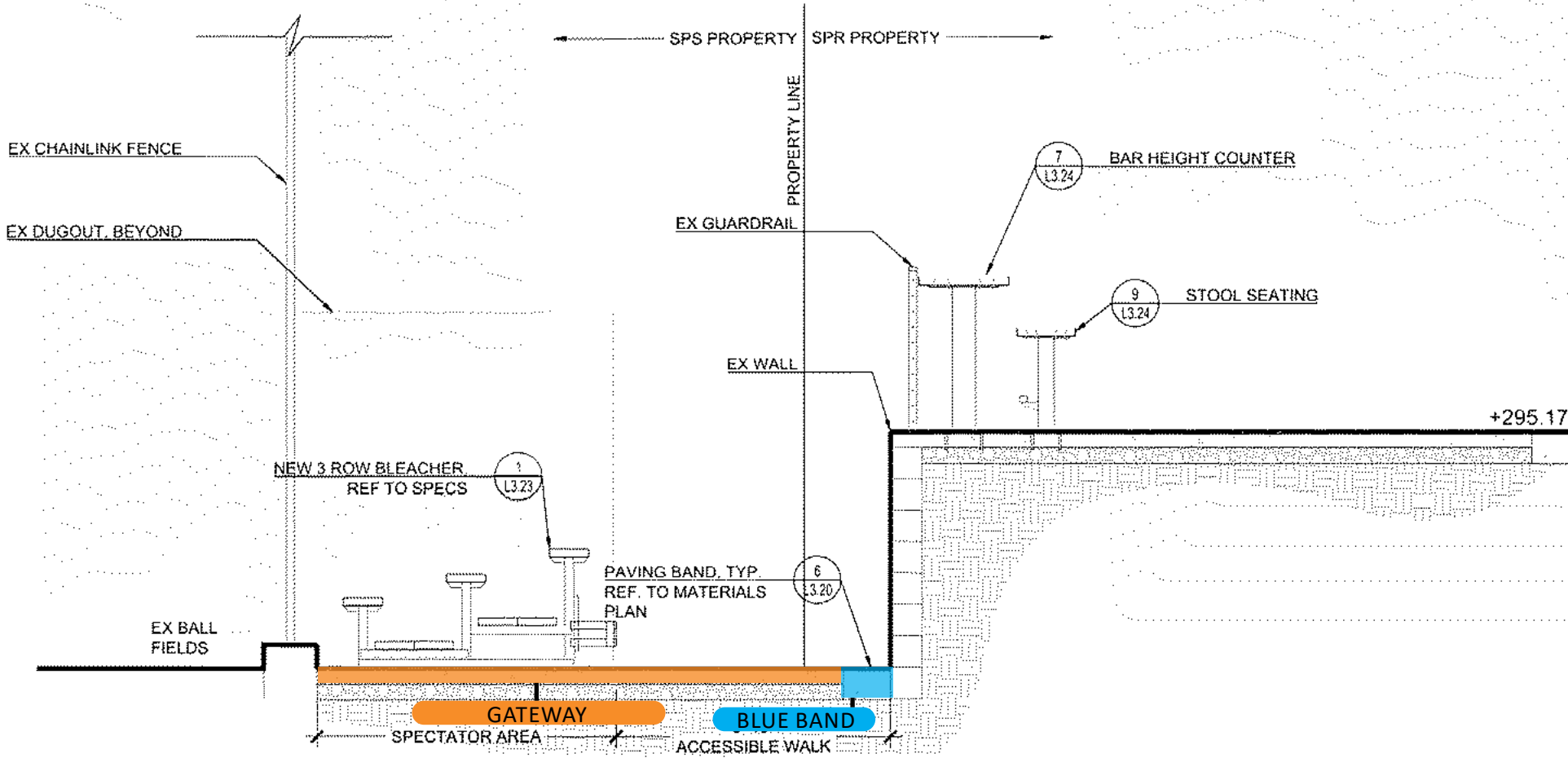
# PAVING | BLUE BAND



SECTION A



BOMANITE PAVING BAND DETAIL



SECTION B



# PAVING + ART | BLUE BAND

## SDC CONDITION

3

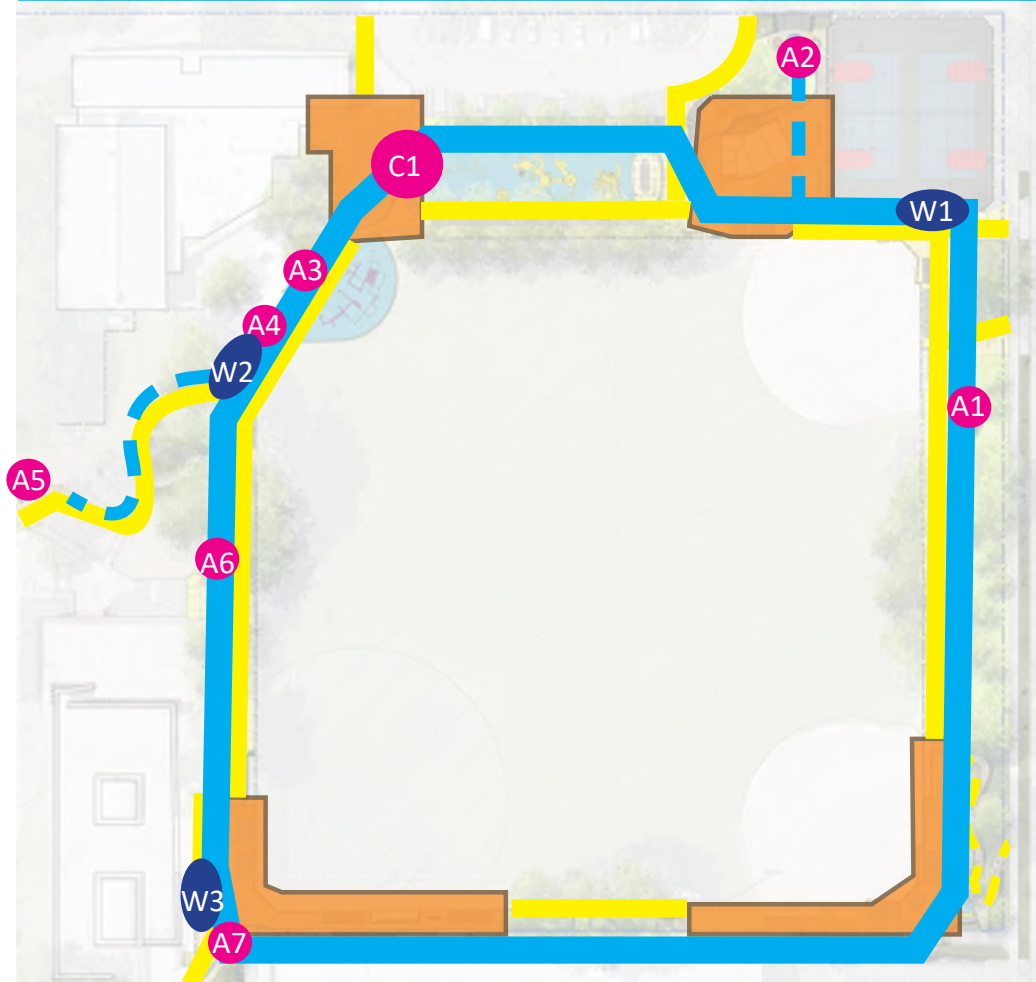
Advance the **wayfinding plan** to include stronger relationships between the **art plan** and the various **paving strategies**

## SDC RECOMMENDATION

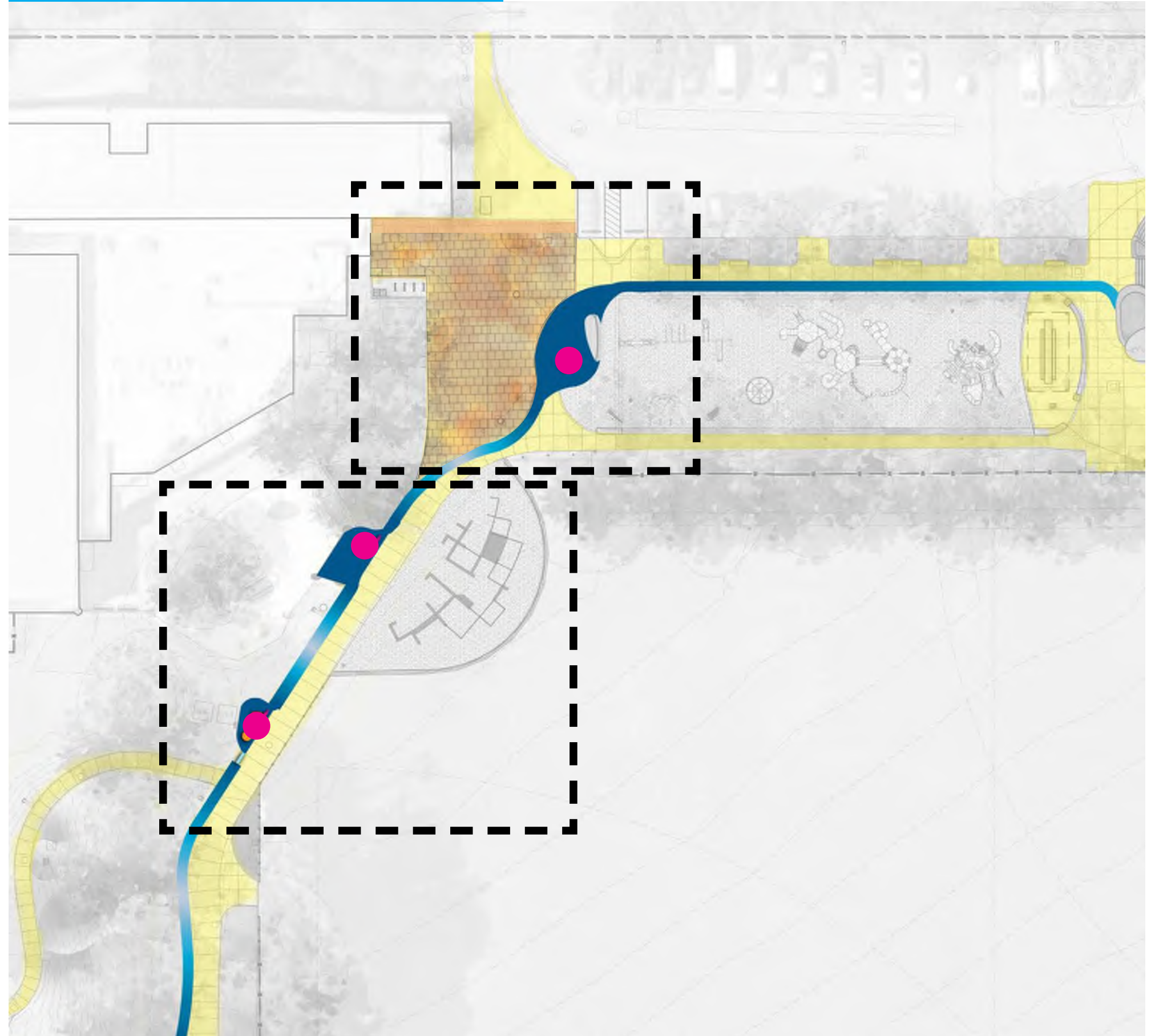
4

Continue to articulate/strengthen the **site narrative** by bringing the project elements together. A way to achieve this may be to expand and **strengthen the role played by the 'blue line' path treatment**.

## INTERNAL LOOP SITE PLAN



## BLUE BAND ENLARGEMENTS





# PAVING | BLUE BAND

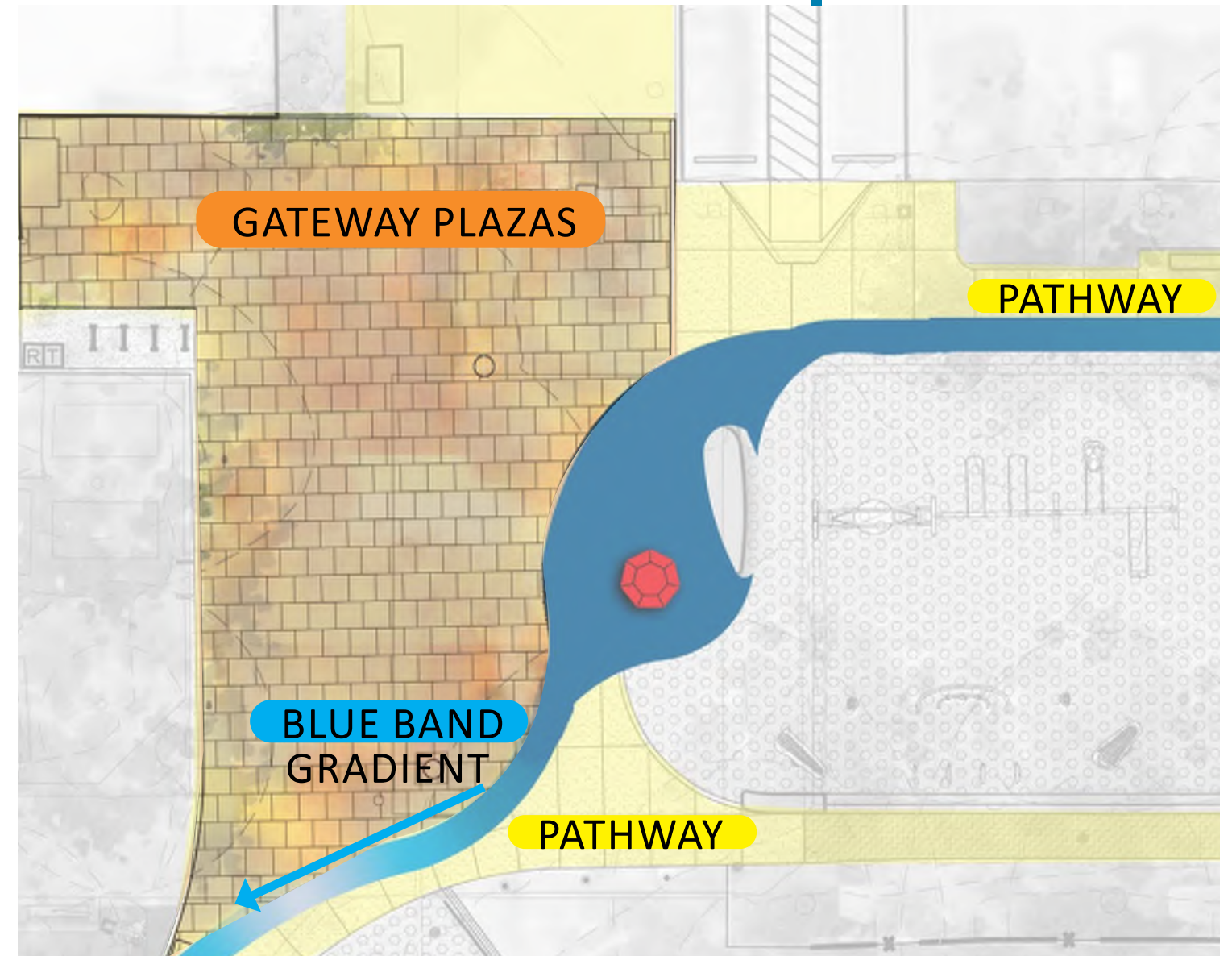
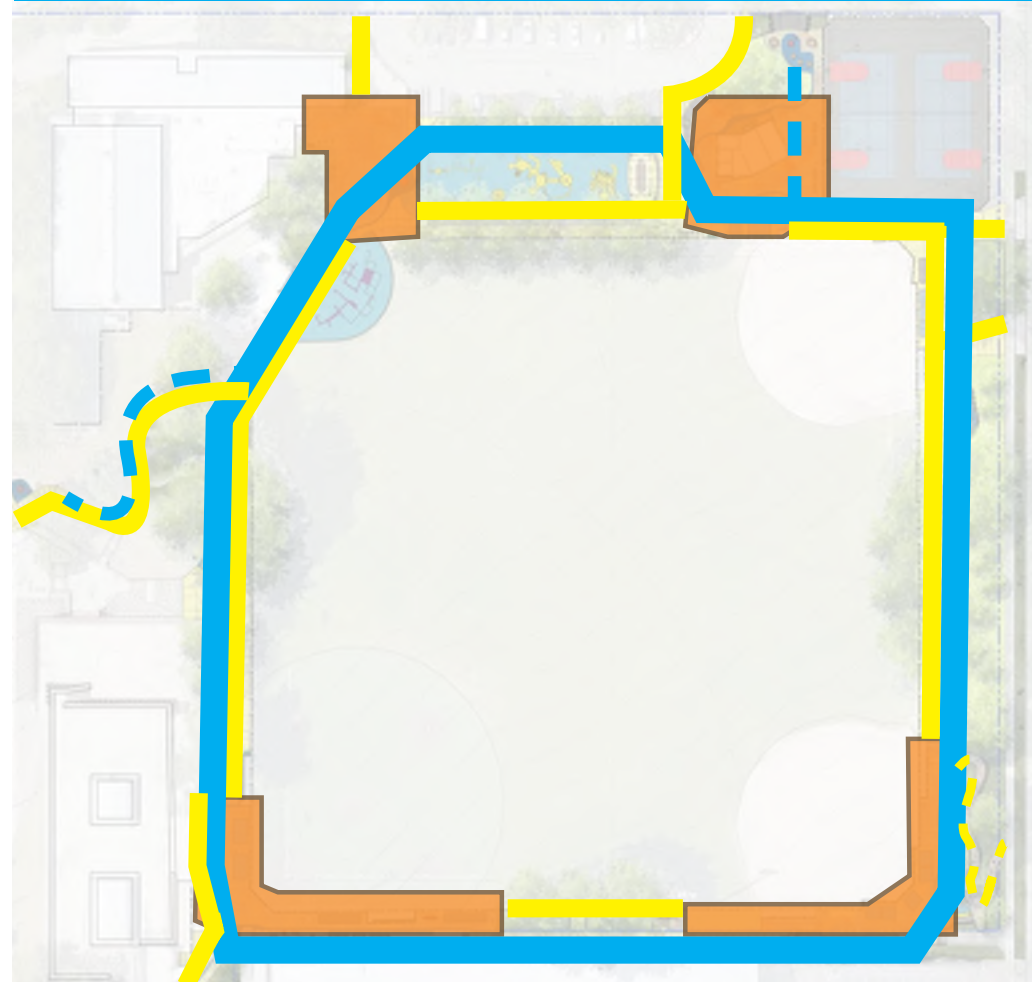
## SDC CONDITION 3

Advance the **wayfinding plan** to include stronger relationships between the **art plan** and the various **paving strategies**

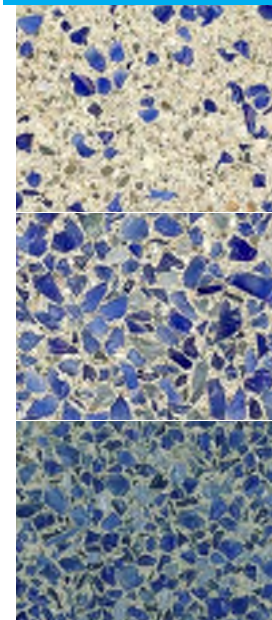
## SDC RECOMMENDATION 4

Continue to articulate/strengthen the **site narrative** by bringing the project elements together. A way to achieve this may be to expand and **strengthen the role played by the 'blue line'** path treatment.

### INTERNAL LOOP SITE PLAN



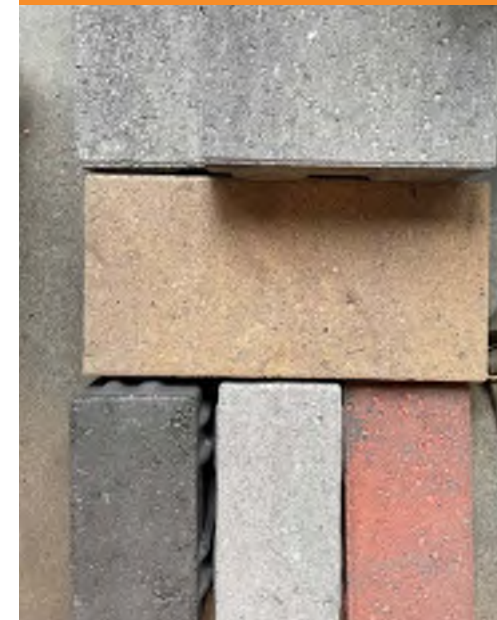
### BLUE BAND GRADIENT



10% GLASS  
25% GLASS  
50% GLASS  
75% GLASS  
90% GLASS  
ART LOCATIONS

Bomanite - Concrete + Sea Glass

### GATEWAY PLAZAS



Pervious Pavers

### PATHWAY



Pervious Concrete



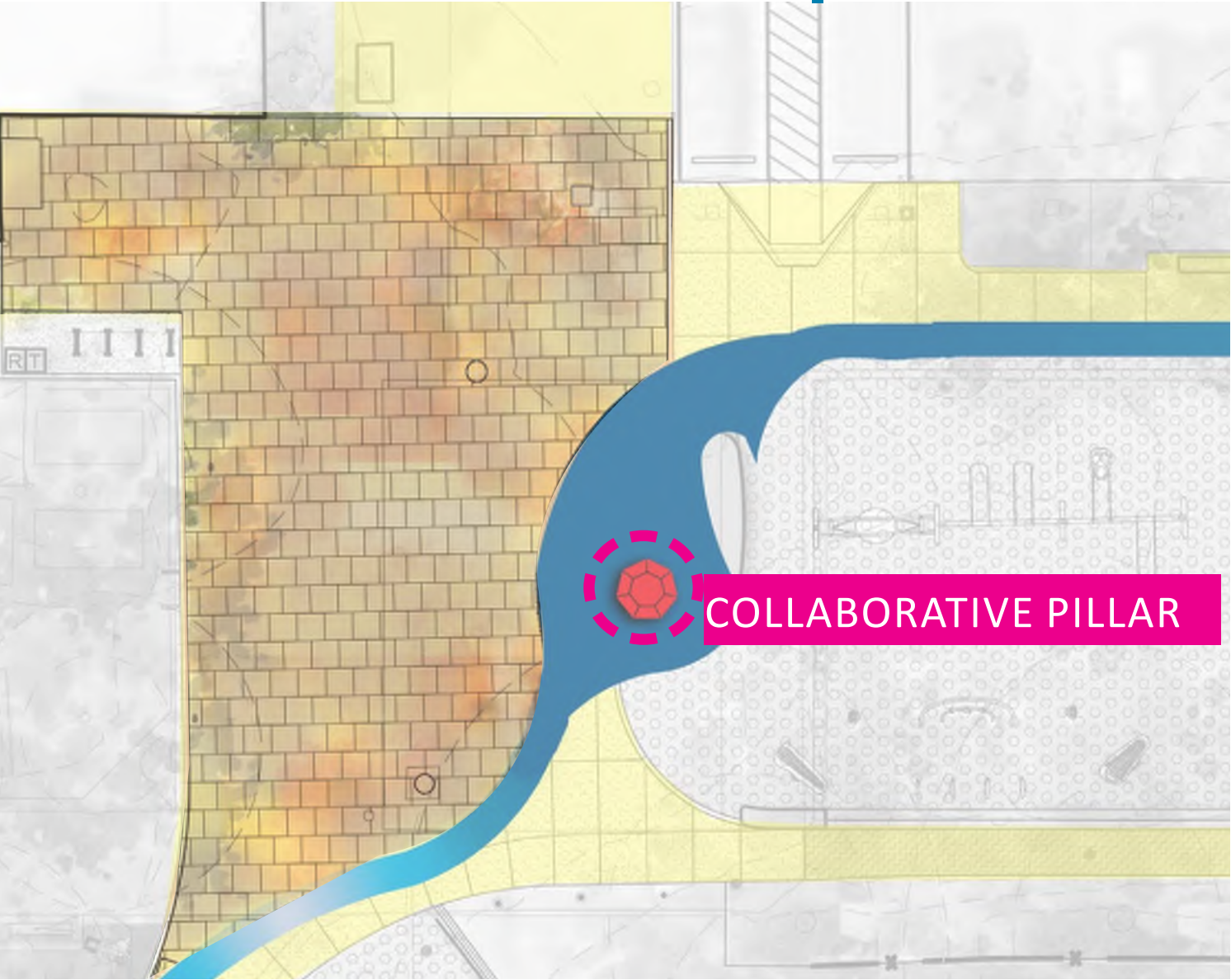
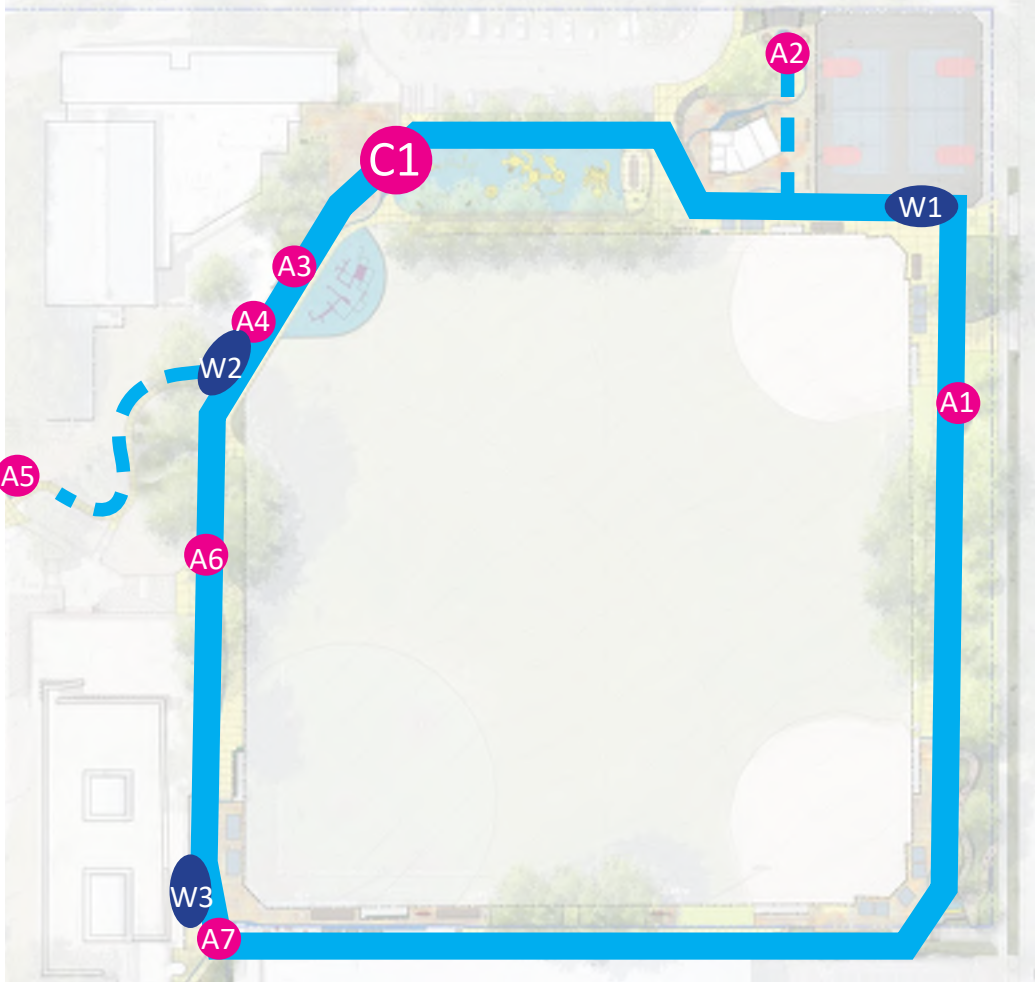
**SDC CONDITION 3**

Advance the **wayfinding plan** to include stronger relationships between the **art plan** and the various **paving strategies**

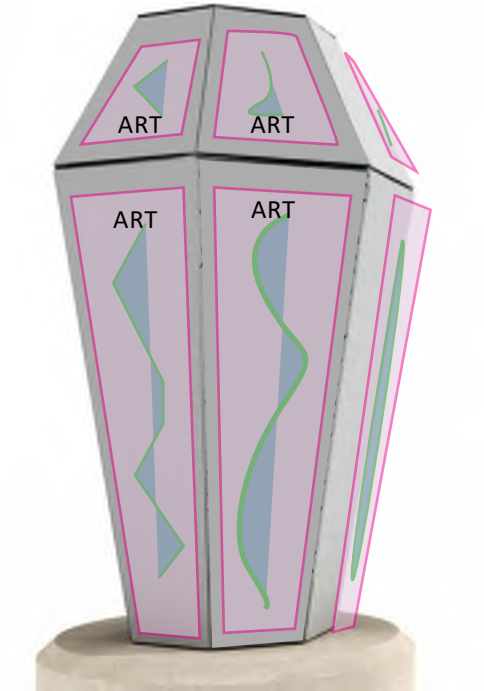
**SDC RECOMMENDATION 4**

Continue to articulate/strengthen the **site narrative** by bringing the project elements together. A way to achieve this may be to expand and **strengthen the role played by the 'blue line' path treatment.**

INTERNAL LOOP SITE PLAN



COLLABORATIVE PILLAR





# PAVING | BLUE BAND

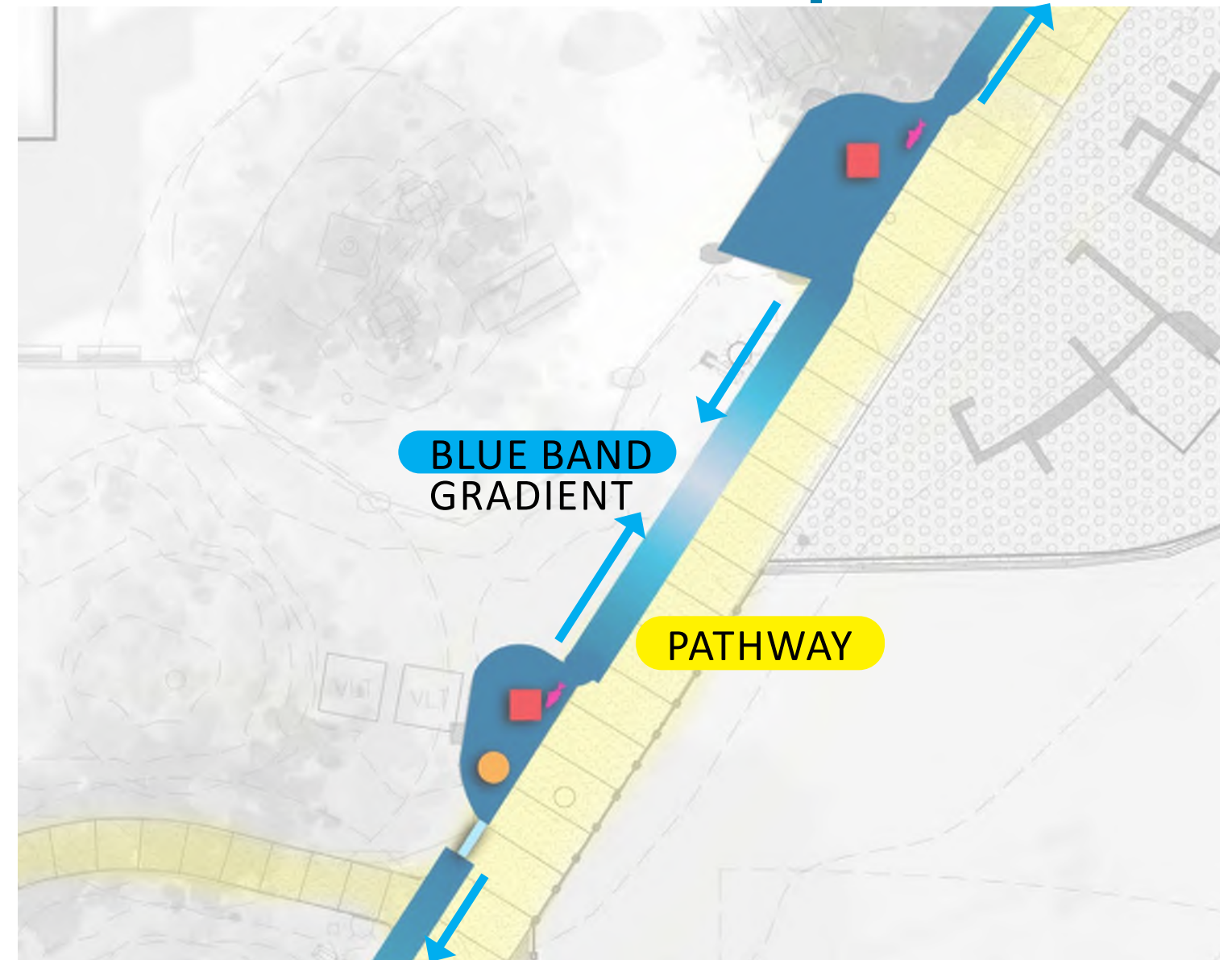
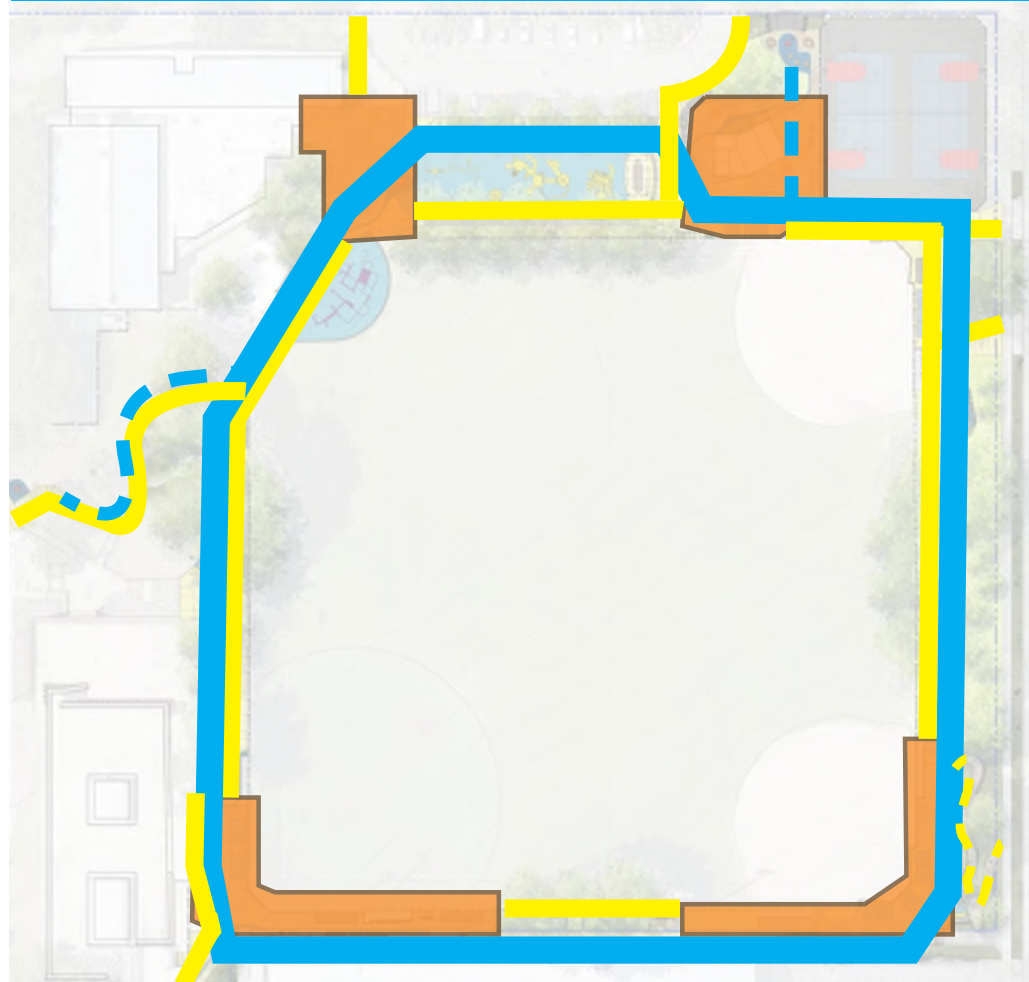
## SDC CONDITION 3

Advance the **wayfinding plan** to include stronger relationships between the **art plan** and the various **paving strategies**

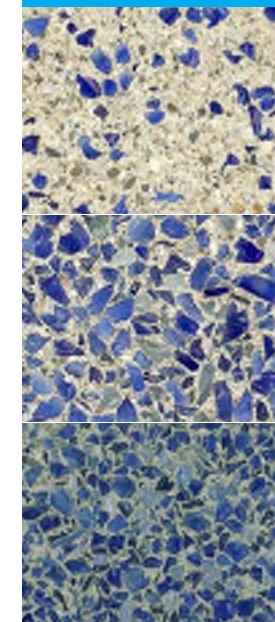
## SDC RECOMMENDATION 4

Continue to articulate/strengthen the **site narrative** by bringing the project elements together. A way to achieve this may be to expand and **strengthen the role played by the 'blue line'** path treatment.

### INTERNAL LOOP SITE PLAN



### BLUE BAND GRADIENT



10% GLASS

25% GLASS

50% GLASS

75% GLASS

90% GLASS  
ART LOCATIONS

Bomanite - Concrete + Sea Glass

### PATHWAY



Pervious Concrete



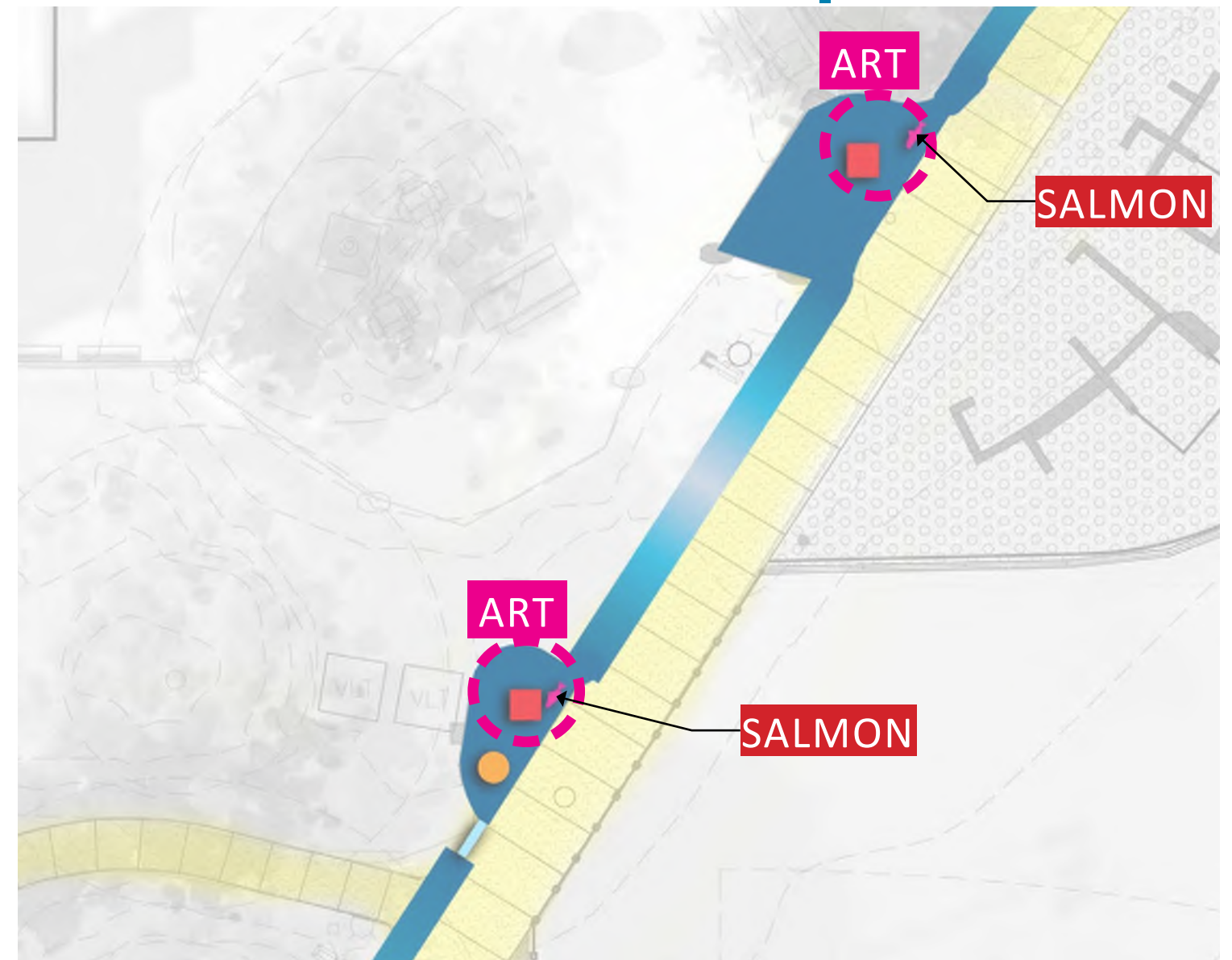
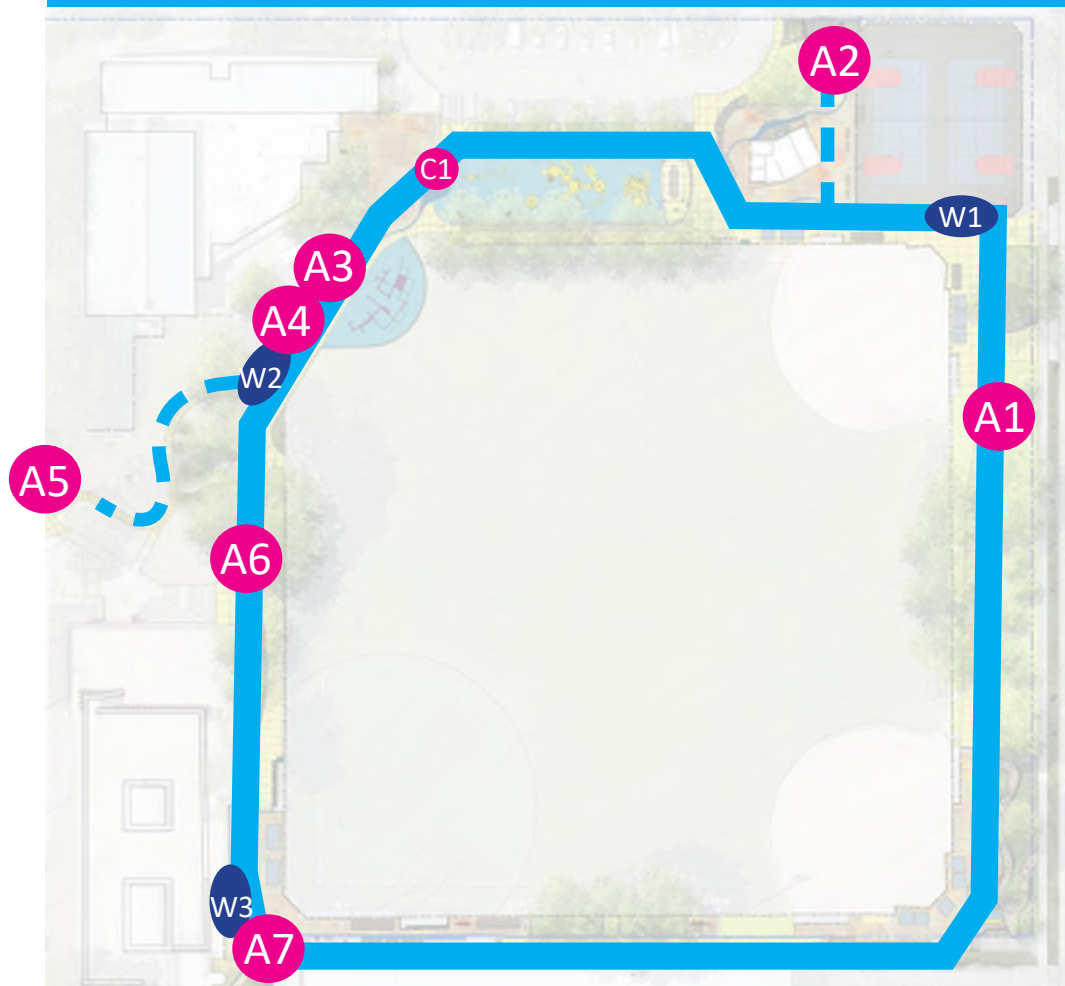
## SDC CONDITION 3

Advance the **wayfinding plan** to include stronger relationships between the **art plan** and the various **paving strategies**

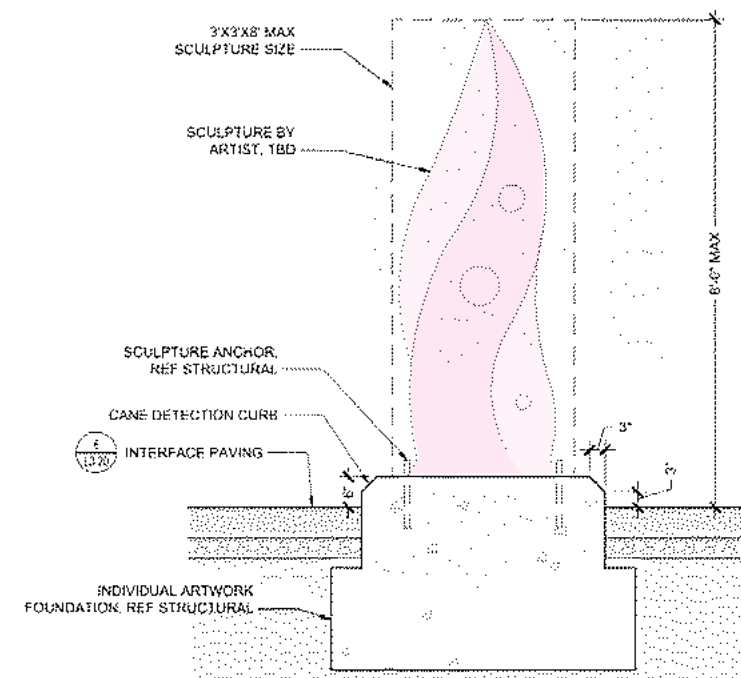
## SDC RECOMMENDATION 4

Continue to articulate/strengthen the **site narrative** by bringing the project elements together. A way to achieve this may be to expand and **strengthen the role played by the 'blue line' path treatment.**

### INTERNAL LOOP SITE PLAN



### ART - PILLARS OF PROMISE



### SALMON INLAY





# WAYFINDING | BLUE BAND

## SDC CONDITION 3

Advance the **wayfinding plan** to include stronger relationships between the **art plan** and the various **paving strategies**

## SDC RECOMMENDATION 4

Continue to articulate/strengthen the **site narrative** by bringing the project elements together. A way to achieve this may be to expand and **strengthen the role played by the 'blue line'** path treatment.

### HISTORY

#### History Title Goes Here

Lorem ipsum odor amet, consectetur adipiscing elit. Viverra tempus taciti massa enim ut ad. Mattis nisi felis quis amet fames potenti potenti ac. Gravida posuere efficitur finibus mollis netus metus. Velit scelerisque quis fermentum tempus laoreet. Odio lacus nulla; quam mauris facilisi sollicitudin eros. Non laculis magnis feugiat blandit; vitae tellus. Ulla torquent erat diam libero in urna rhoncus. Nunc ultrices morbi ornare praesent at adipiscing.

Nostra siti volutpat iaculis quisque ornare. Iaculis sem nullam eleifend pharetra mus nostra. Accumsan magnis accumsan netus dictum senectus class curae ultrices leo. Cursus vehicula praesent penatibus class malesuada turpis phasellus hendrerit senectus. Diam facilisi donec scelerisque cursus netus cras. Nibh tempor semper sed nam turpis pulvinar.

### ART

### LOOP

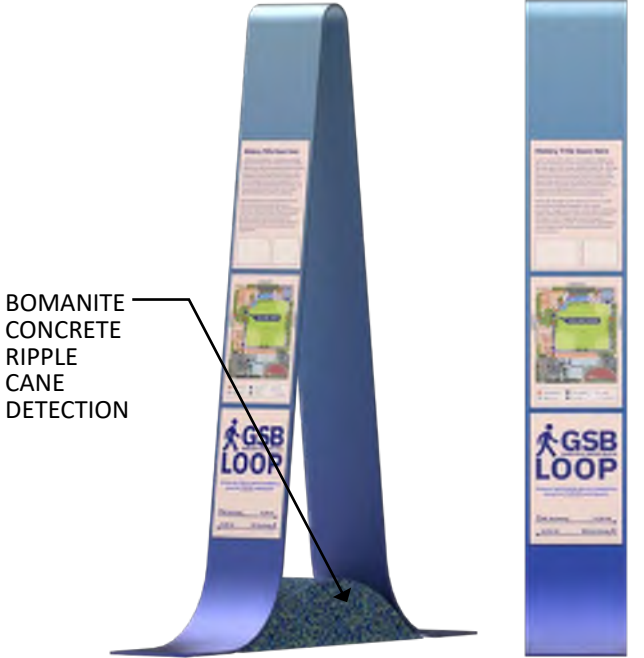
Discover local history and art installations along this 3.25 mi walking path.

NE Archway0.28 mi

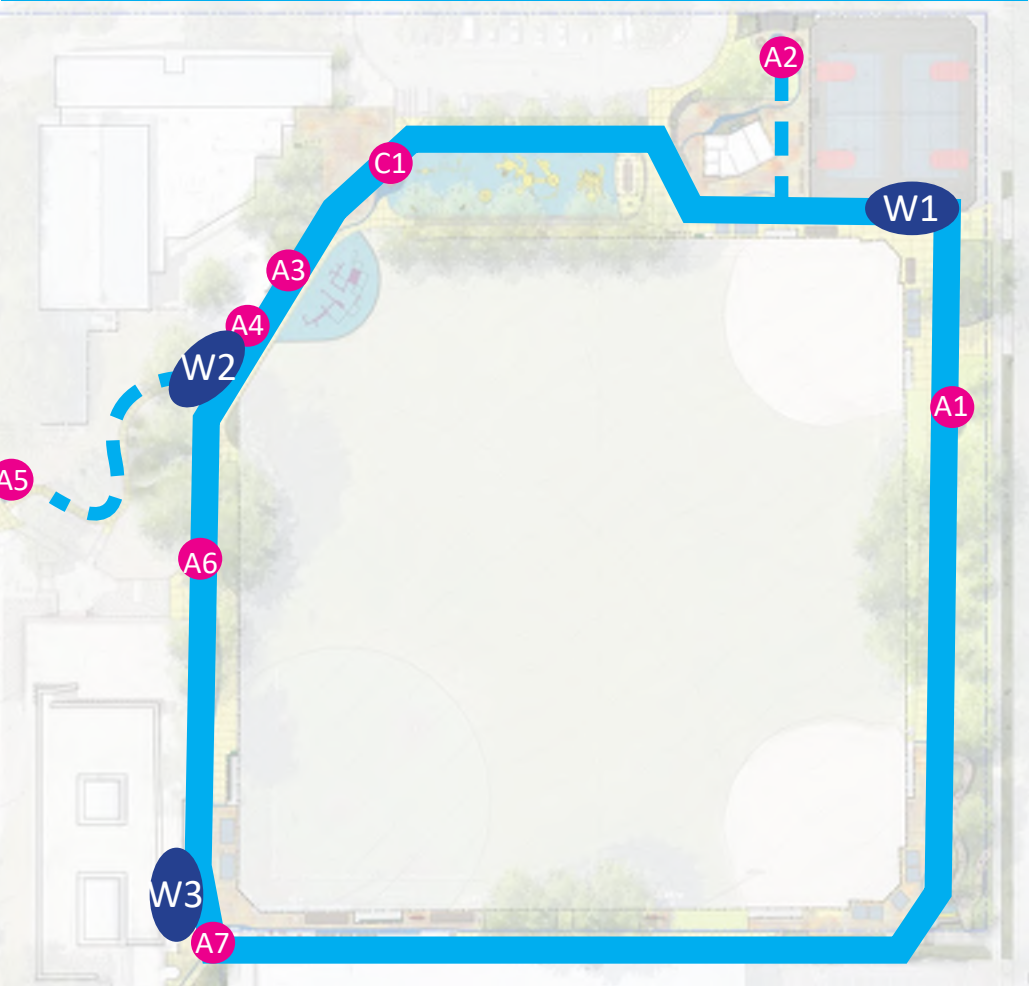
0.21 miSW Archway



### WAYFINDING SIGN



## INTERNAL LOOP SITE PLAN





# SITE FURNISHINGS | BID ADDITIVE#2

**BENCH**



**GROUP TABLE**



**BARBEQUE**



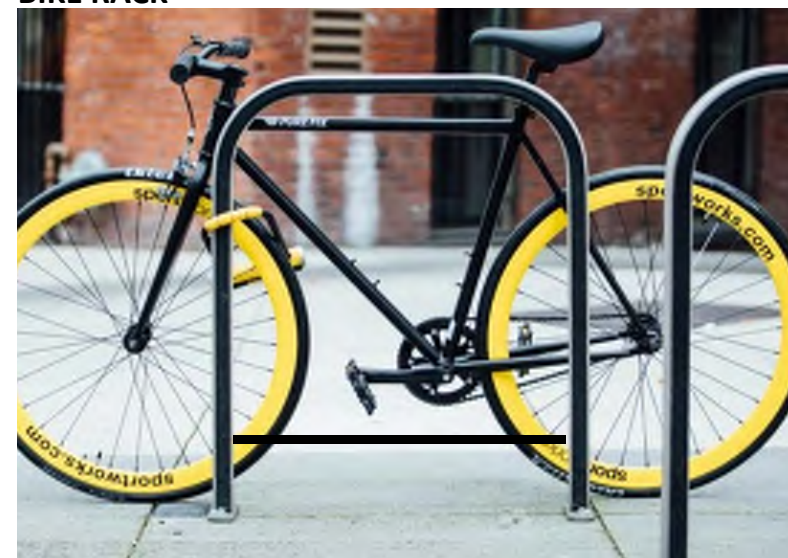
**PICNIC TABLE**



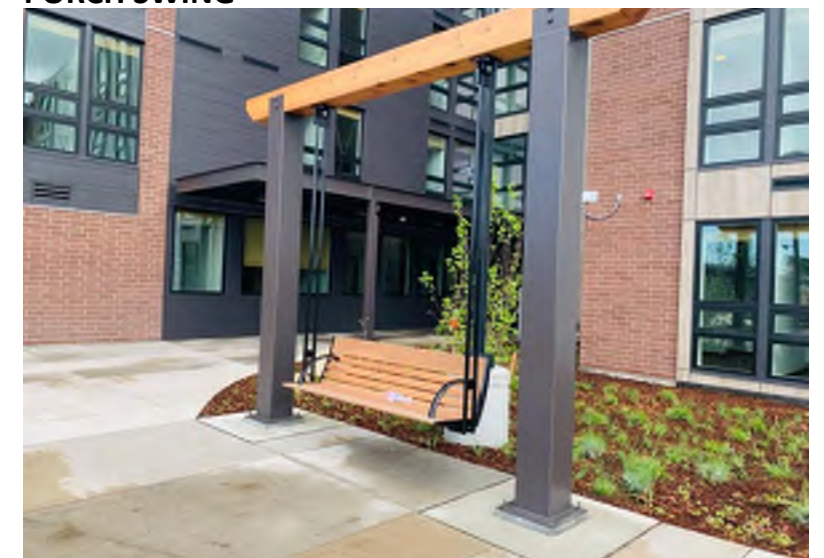
**PLINTH**



**BIKE RACK**



**PORCH SWING**



**COUNTER TABLE + STOOLS**



**WOOD TOP SEAT**



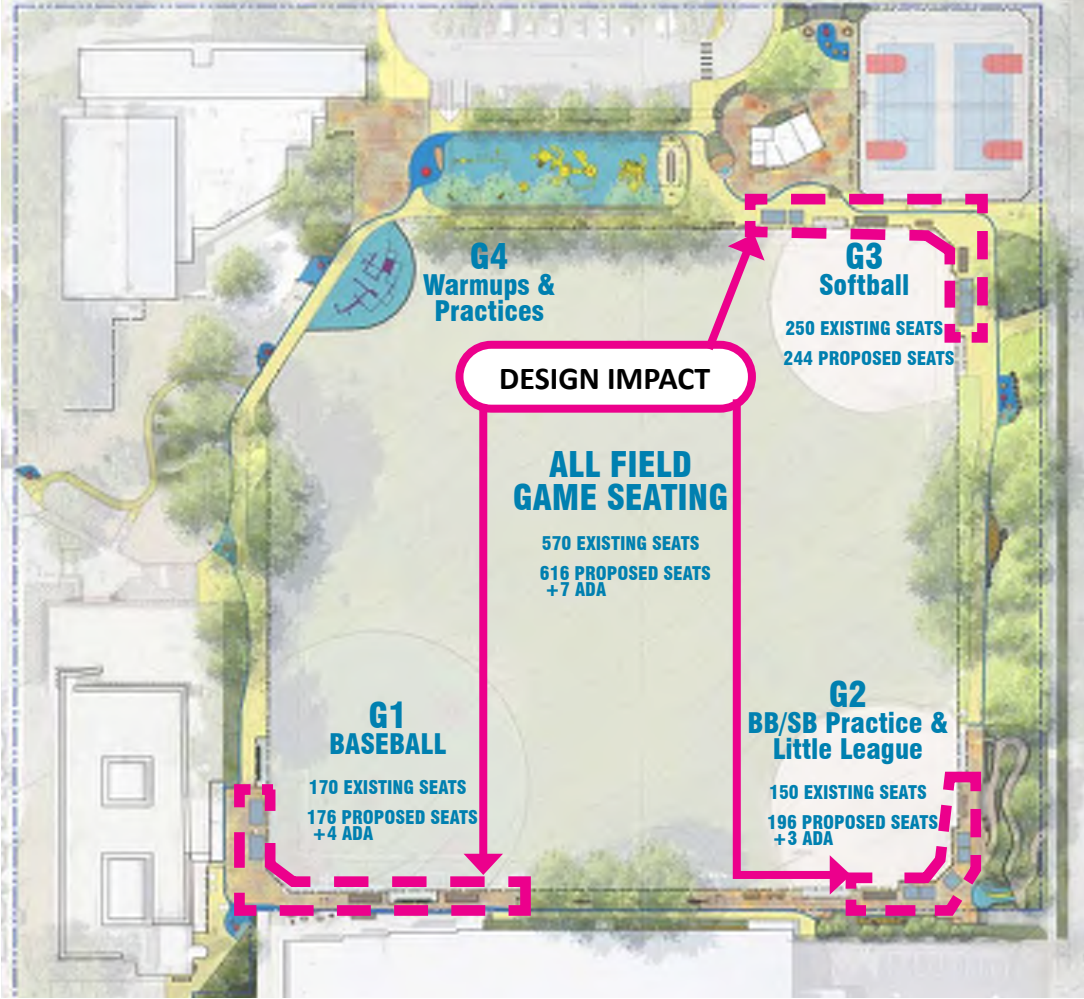
**ARMREST TABLES**





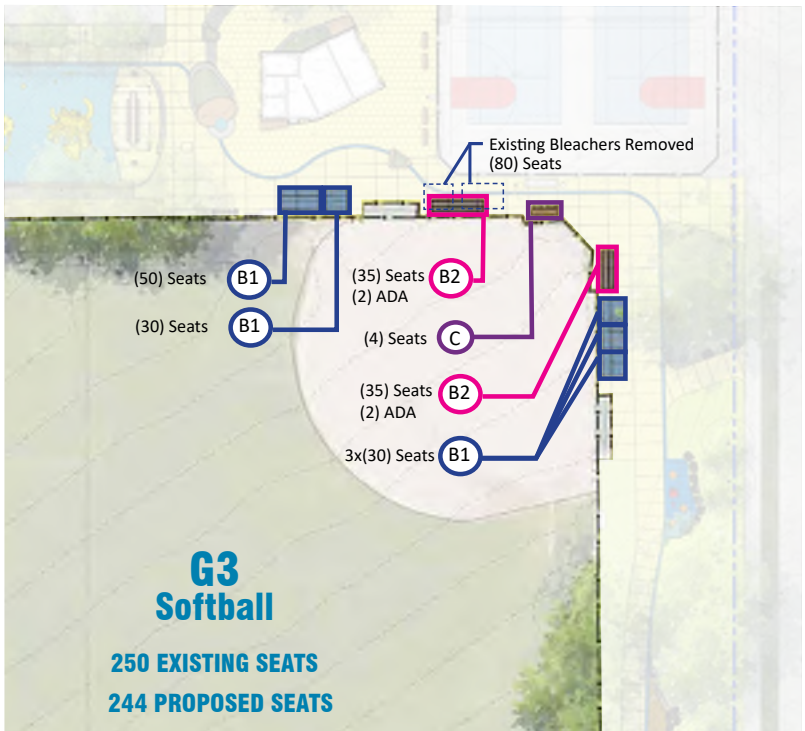
BALLFIELD GAME SEATING

SEAT COUNT CALCULATOR  
1 SEAT = 18" x 18"



PLAYFIELD SEATING FEEDBACK

G3 - SOFT BALL



- B1 Existing Bleacher (5 ROW)
- B2 New Bleacher (3 ROW)
- C Counter Table + Stools

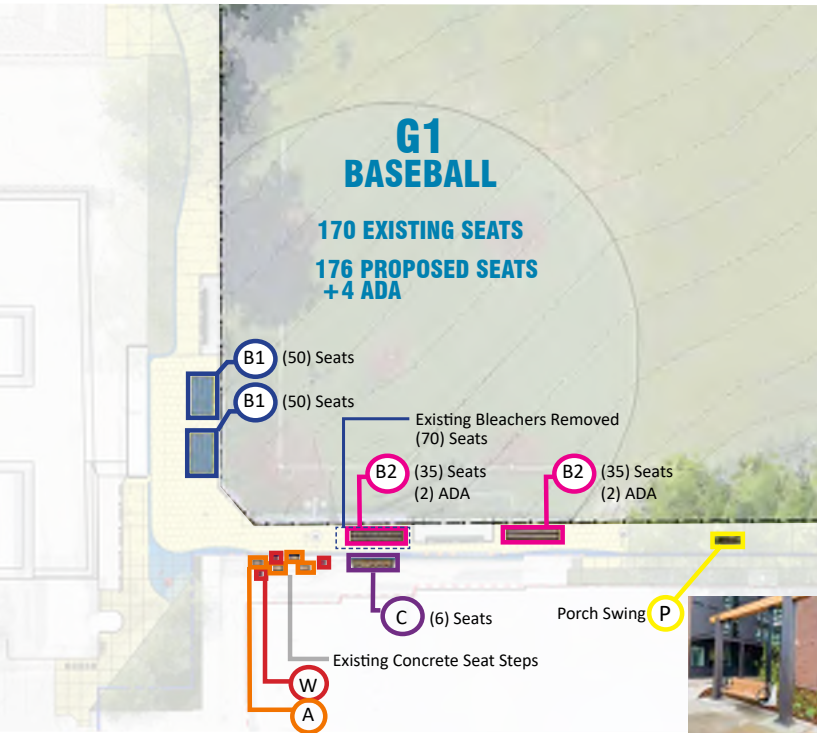
Outreach (July 29 '24)

- Site Walk & Review of Game Seating for all Fields with representatives from each program (Baseball, Softball, Little League)

Outcomes:

- Counter Ht Tables & Chairs shifted to Teen Life Center Overlook
- Removed Benches & 3 Tier Bleachers around dugouts to provide open/flex space for users bringing camping chairs, etc.
- Extended length of Baseball bleachers as prime viewing areas

G1 - BASEBALL



- B1 Existing Bleacher (5 ROW)
- B2 New Bleacher (3 ROW)
- C Counter Table + Stools
- W Wood Top Seat
- A Armrest Tables
- P Porch Swing

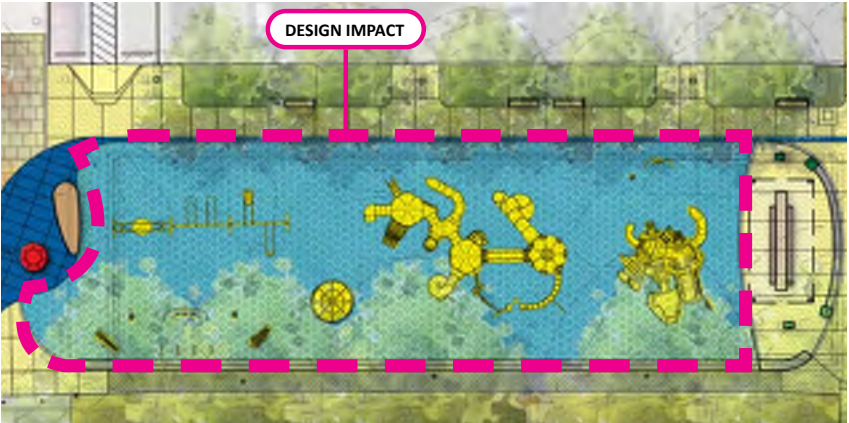
G2 - LITTLE LEAGUE



- B1 Existing Bleacher (5 ROW)
- B2 New Bleacher (3 ROW)
- C Counter Table + Stools
- BN Bench



# PLAYGROUND EQUIPMENT FEEDBACK



Outcomes:

- Color Selection TBD by Community!

Outreach (Oct '24)

- Playground Equipment Color Options on display at the Garfield Community Center





## LIGHTING LEGEND

### Existing Fixture



25' MOUNTING HEIGHT

2024 QUICK WIN - SPR MAINTENANCE INSTALLED



### Proposed Fixtures

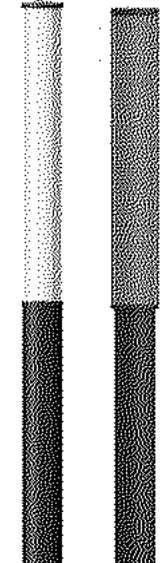
XL4,5,7,8,15,16 - RESTROOM LIGHTS



XL1/2/3  
16' POLE



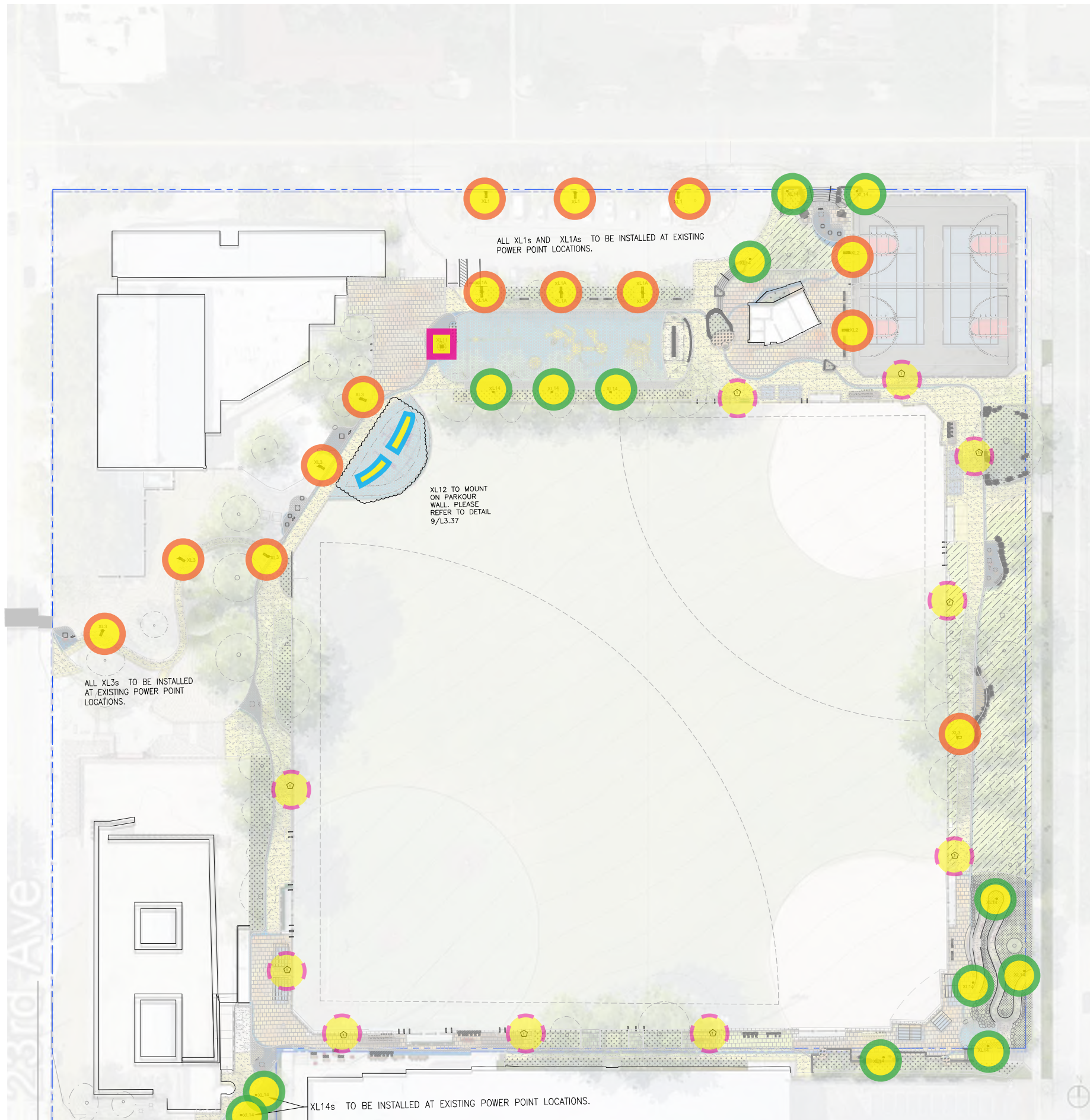
XL14  
12' COLUMN LUMINAIRE



XL11  
COMBINED ART UPLIGHT



XL12  
PARKOUR WALL LINEAR LIGHT

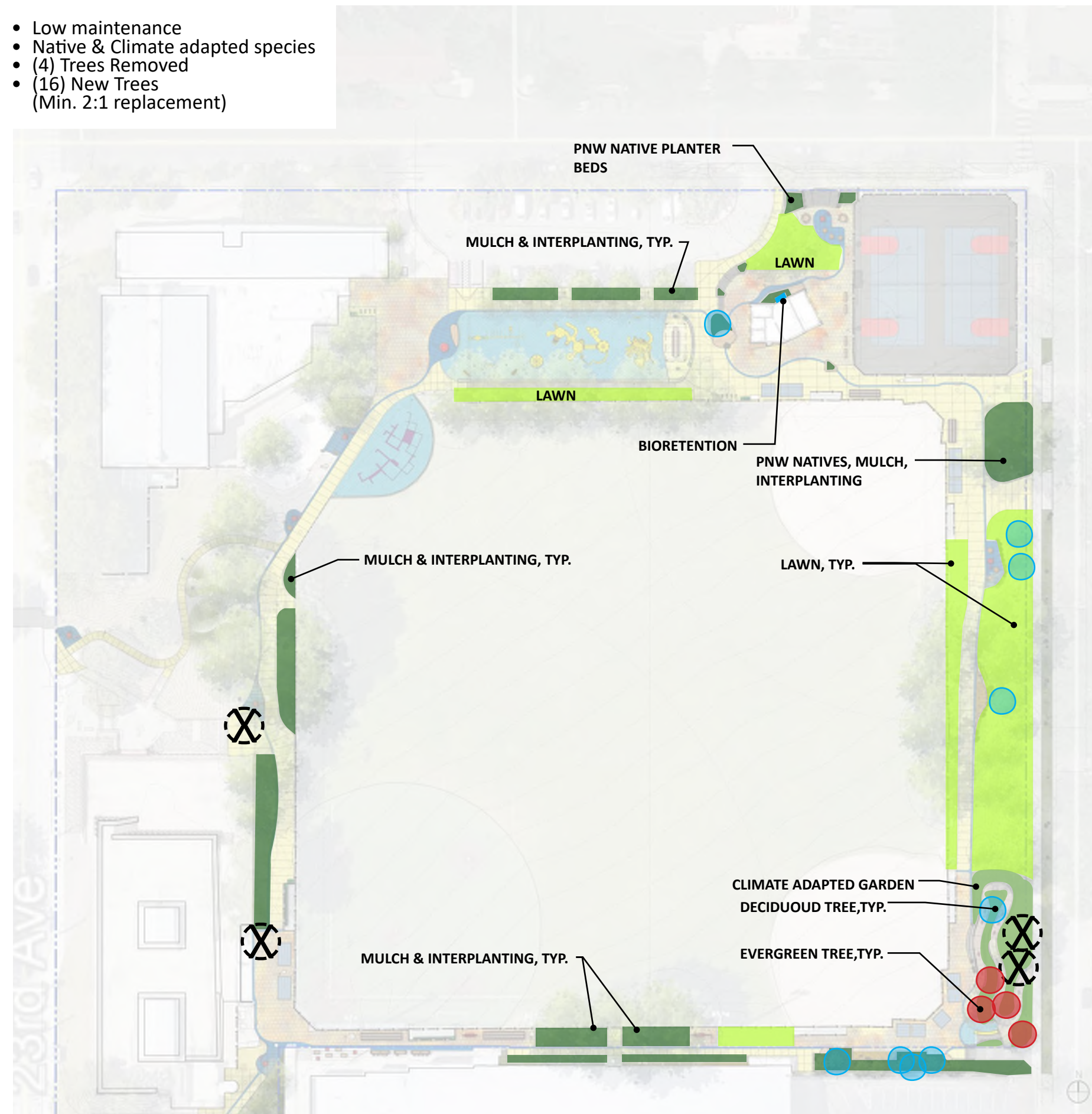




# PLANTING

## GOALS:

- Low maintenance
- Native & Climate adapted species
- (4) Trees Removed
- (16) New Trees  
(Min. 2:1 replacement)



Lawn

PNW Natives & Interplanting at Existing Trees



Climate Adapted Garden



Bioretention



2:1 Replacement Trees



Trees for Removal



# 6 | ARCHITECTURE



**SDC COMMENT** 1

Create **architectural relationships** with the **existing structures** at this location (Community Center, High School, etc)

Due to its prominent location in the center of the gathering area of the park and being highly visible from Cherry Street, the new comfort station is a significant structure in the GSB campus. It is important that it be welcoming, fit in visually with the rest of the campus and project an image of quality and care.

Materials: We are proposing a combination of brick and colored metal panels as the main exterior materials. Brick will allow the building to read as part of the campus and is a high quality material that conveys care and pride in the structure. The painted panels will allow for custom art and wayfinding.

Roof Form: The arched shape of the roof references the curved shapes of the modern civic buildings on site, including The Garfield Community Center and the Quincy Jones Theater and creates a strong visual presence to help with site identification and wayfinding.

**CAMPUS MATERIALS**



HORACE MANN SCHOOL

NEW RESTROOM



QUINCY JONES THEATER



GARFIELD HIGH SCHOOL



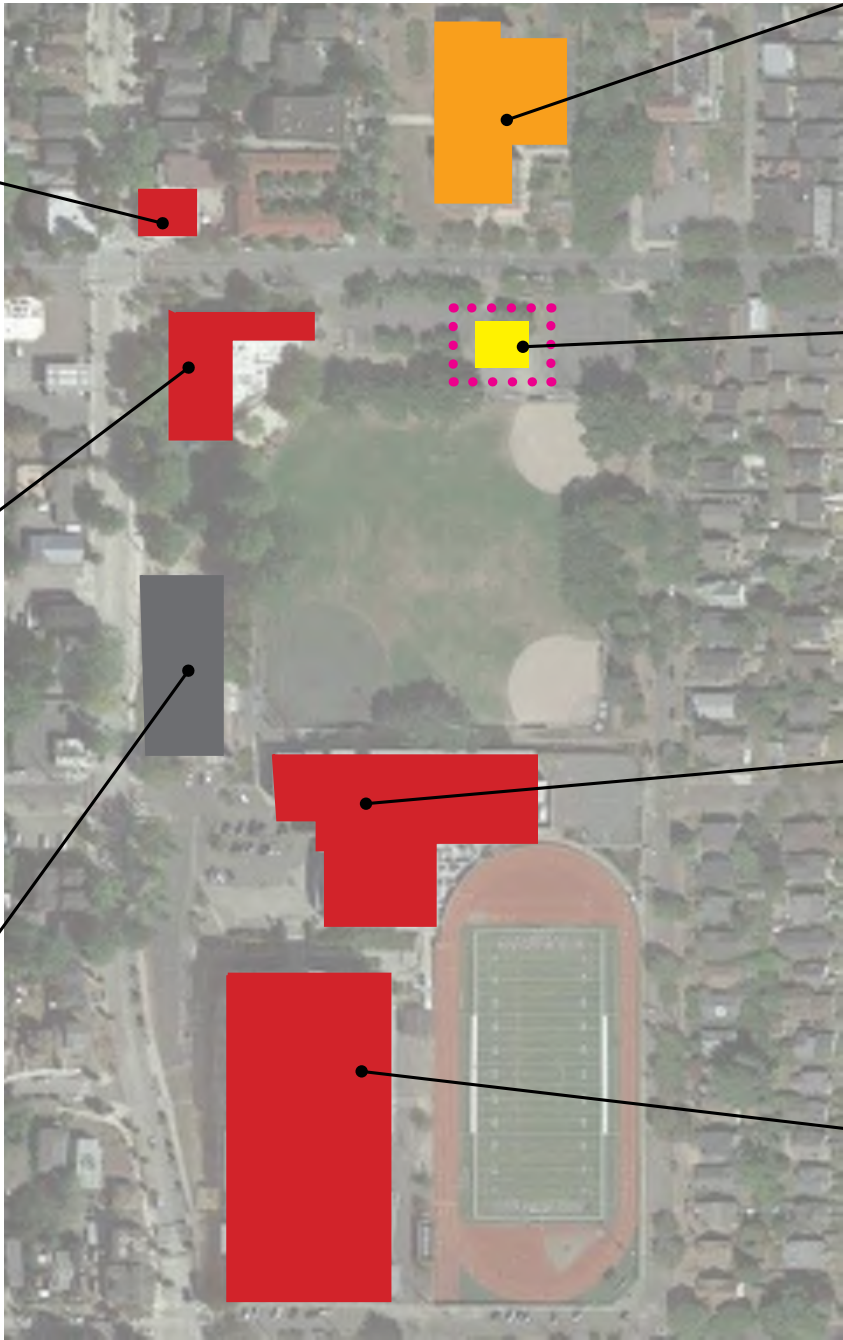
COYOTE CENTRAL



GARFIELD COMMUNITY CENTER



MEDGAR EVARS POOL



**GSB CAMPUS- SIGNIFICANT BUILDINGS**



SDC CONDITION 2

Establish architectural relationships between the comfort station and picnic shelter

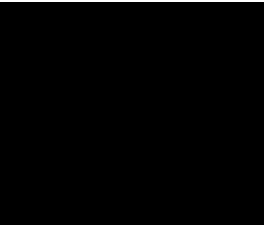
RESTROOM & PICNIC SHELTER MATERIALS

ROOF SOFFIT



Redwood

METAL FRAME

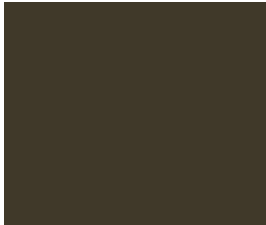


Black

PERFORATED METAL

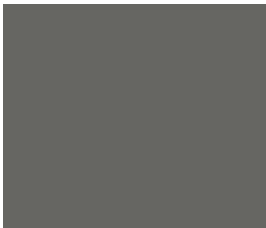


ROOF METAL



Cool Dark Bronze

FLASHING AND SCUPPERS



Cool Zinc Grey

BRICK



MURAL



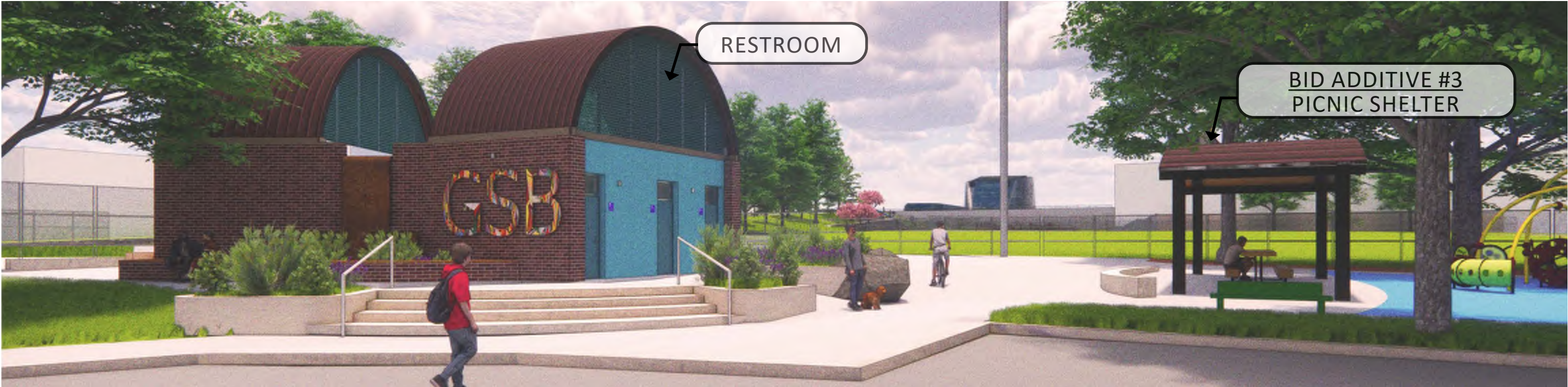
SIDING



Composite Aluminum panel

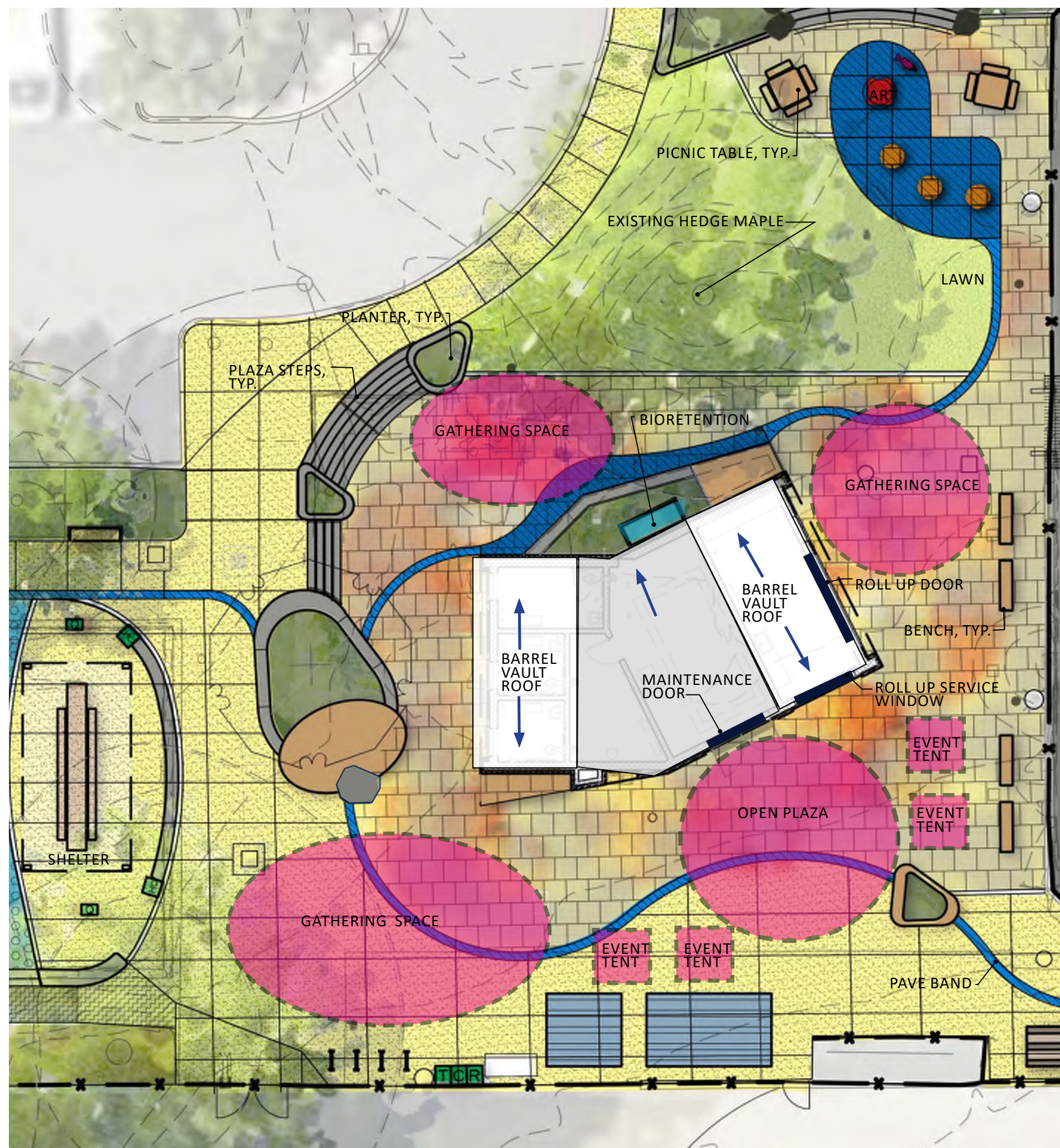




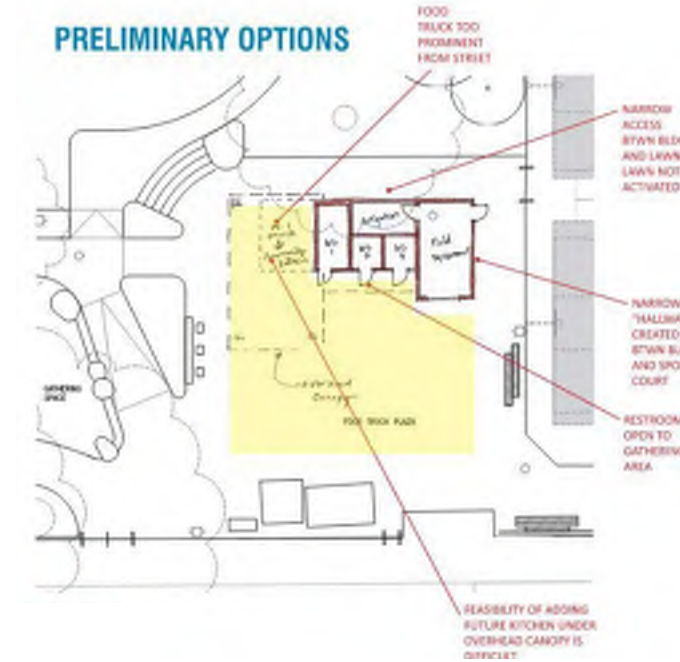




# RESTROOM

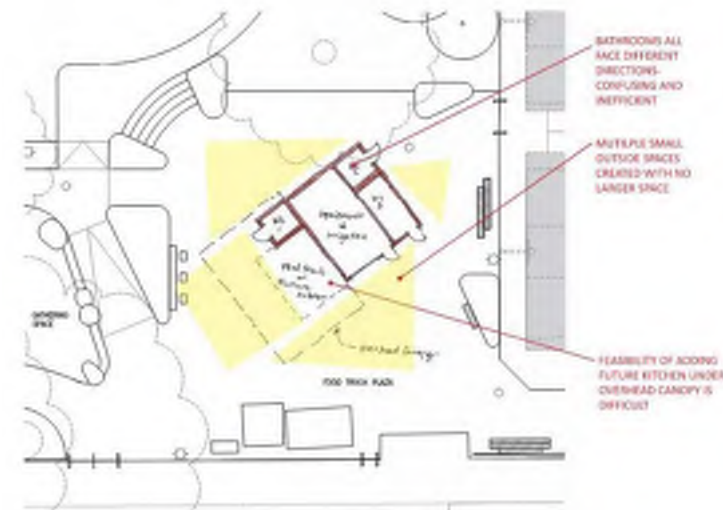


## PRELIMINARY OPTIONS



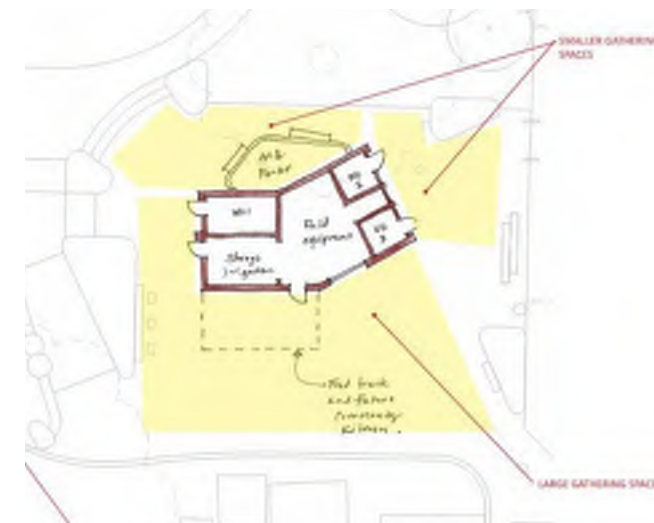
### Option 1:

- Only one large gathering space
- Access to the courts is narrow
- Restrooms open to main gathering space
- No visual access from Nova



### Option 2:

- Several small gathering spaces, but no larger one
- No direct access to playground



### Option 3:

- Mix of large and small gathering
- Visual access from NOVA
- Visual access to bathrooms from playground
- Gathering in front of sport court
- Welcoming gathering space on north side

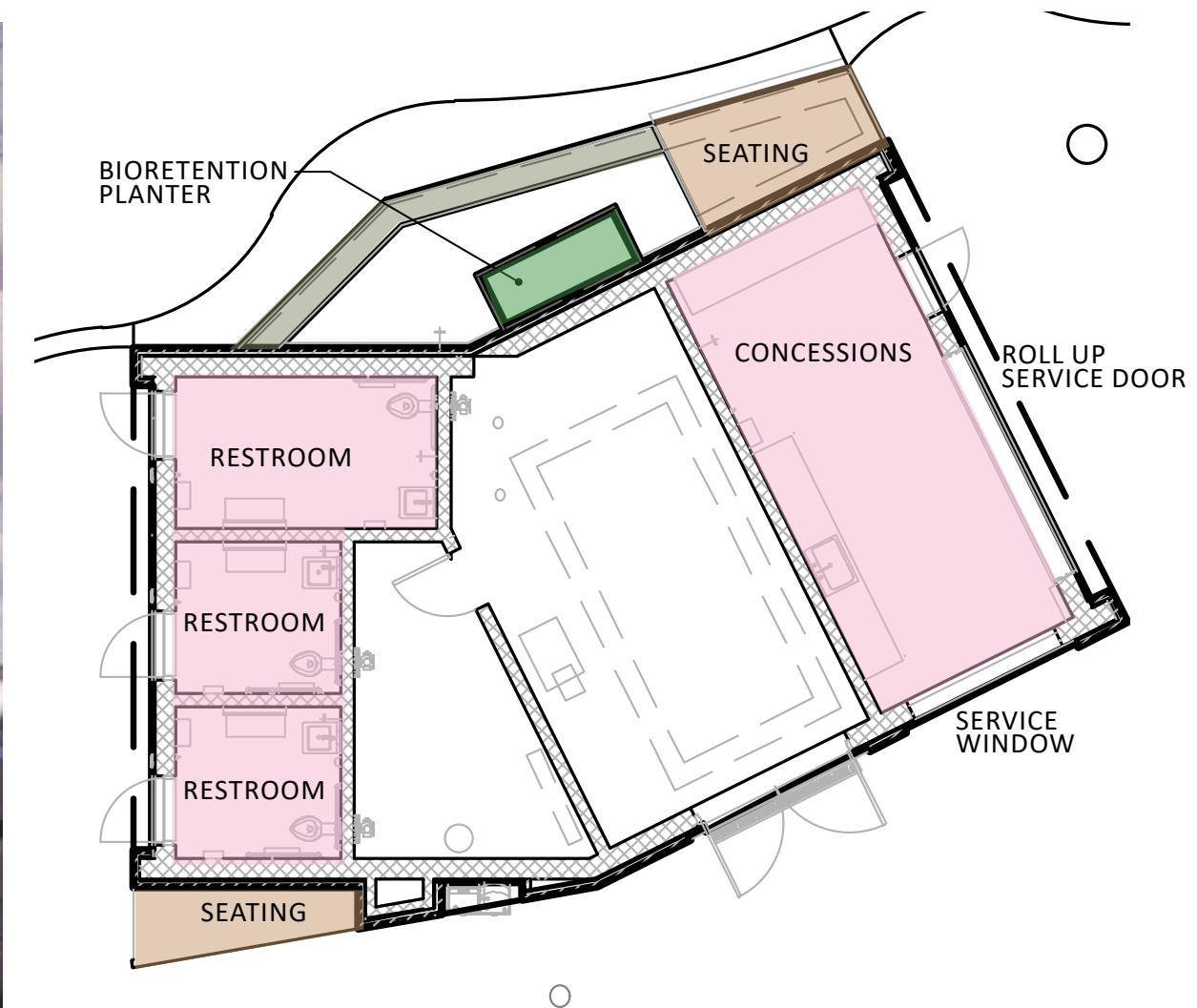
## Schematic Site Design Options



# RESTROOM



View from Cherry Street and Parking Lot



MATERIALS: Brick, tile, signage, art, colored metal mesh



View from Ball Field



View from Sport Court and Cherry St



View from Sport Court and Ball Fields



# 7 | ART PLAN





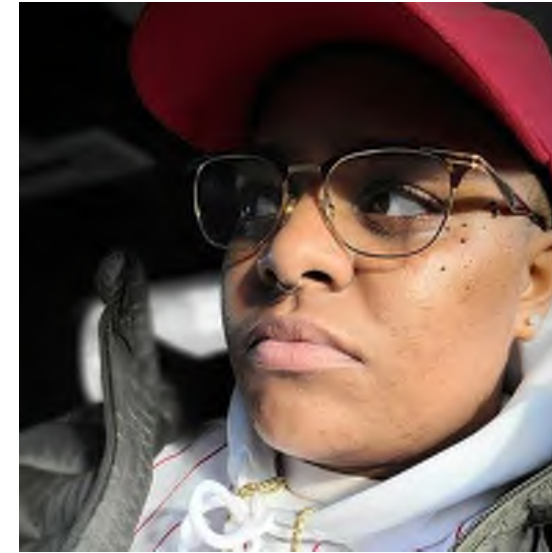
Elisheba Johnson



Esther Eervin



Takiyah Ward



Breyahna "Breeze" Coston

## Art Team Events

- Public Art Academy: 2 day free public artworkshop open to the public.
- Ethnic Advisory Arts Dinner: Gathering with the 16 members of the ethnic advisory artist selection committee to share goals and build common ground.

## Art Curator Team



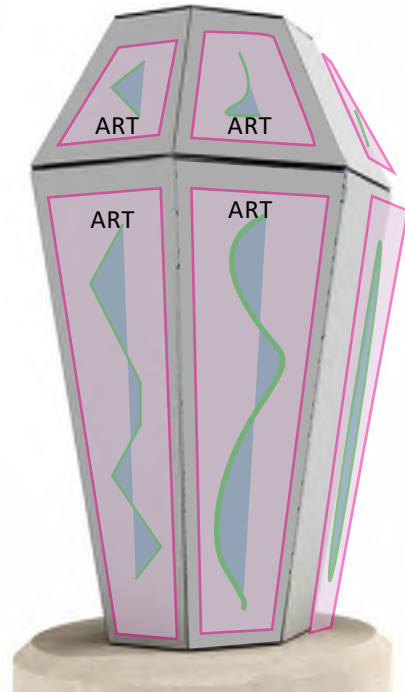
## Art Academy

## Garfield High School Mural



# ART PLAN | PILLARS & COLLABORATIVE

## COLLABORATIVE PILLAR



### The Artists for : Collaborative Pillar



Artist: Jamie Colacacchi  
Representing: Italian  
Website: jamiecolacacchi.com



Artist: Ria Pacita  
Representing: Filipina  
IG: @airbackwardz



Artist: Juliet Shen  
Representing: Chinese  
Website: julietshen.com



Artist: Monique Shanta'u Worth  
Representing: Black/African American  
IG: @meaux\_artistry



Artist: Teruko Nimura  
Representing: Japanese  
Website: terukonimuraart.net



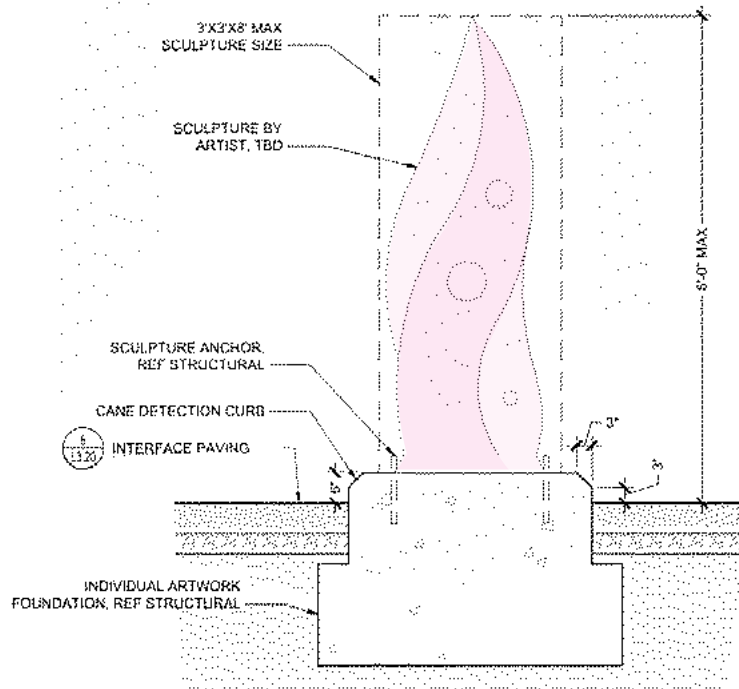
Artist: Kevin Paul  
Representing: Coast Salish/Swinomish  
Website: kpaulcarvings.com



Artist: Rachel Kessler  
Representing: Jewish  
Website: rachelkessler.org



## PILLAR OF PROMISE



### Artists for : Pillar of Promise



A1 Artist: Jessica Bergamino  
Representing: Italian



A2 Artist: Michael Halady  
Representing: Coast Salish/Duwamish



A3 Artist: Myron Curry  
Representing: Black/African American  
Website: mcurrydesigns.com



A4 Artist: Rainer Adkins  
Representing: Jewish  
Instagram: IG: @rainerwaldmanadkins\_art



A5 Artist: Louis Chinn & Huameng Yu  
Representing: Chinese  
Website: louischinn.com



A6 Artist: Lauren Iida  
Representing: Japanese  
Website: laurenida.com



A7 Artist: Carina del Rosario  
Representing: Filipina  
Website: cadelrosario.com





Application Deadline:  
Tuesday,  
September 12th.



REFORESTING THE  
CENTRAL AREA  
ART CALL

APPLY TODAY!

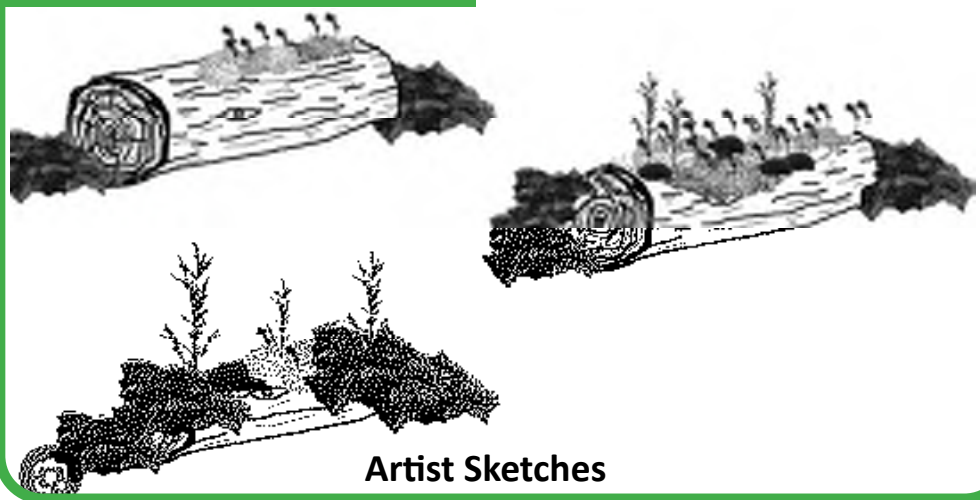
Artist for: Reforesting

Reforesting the Central District



Gabrielle Abbott

REFORESTING



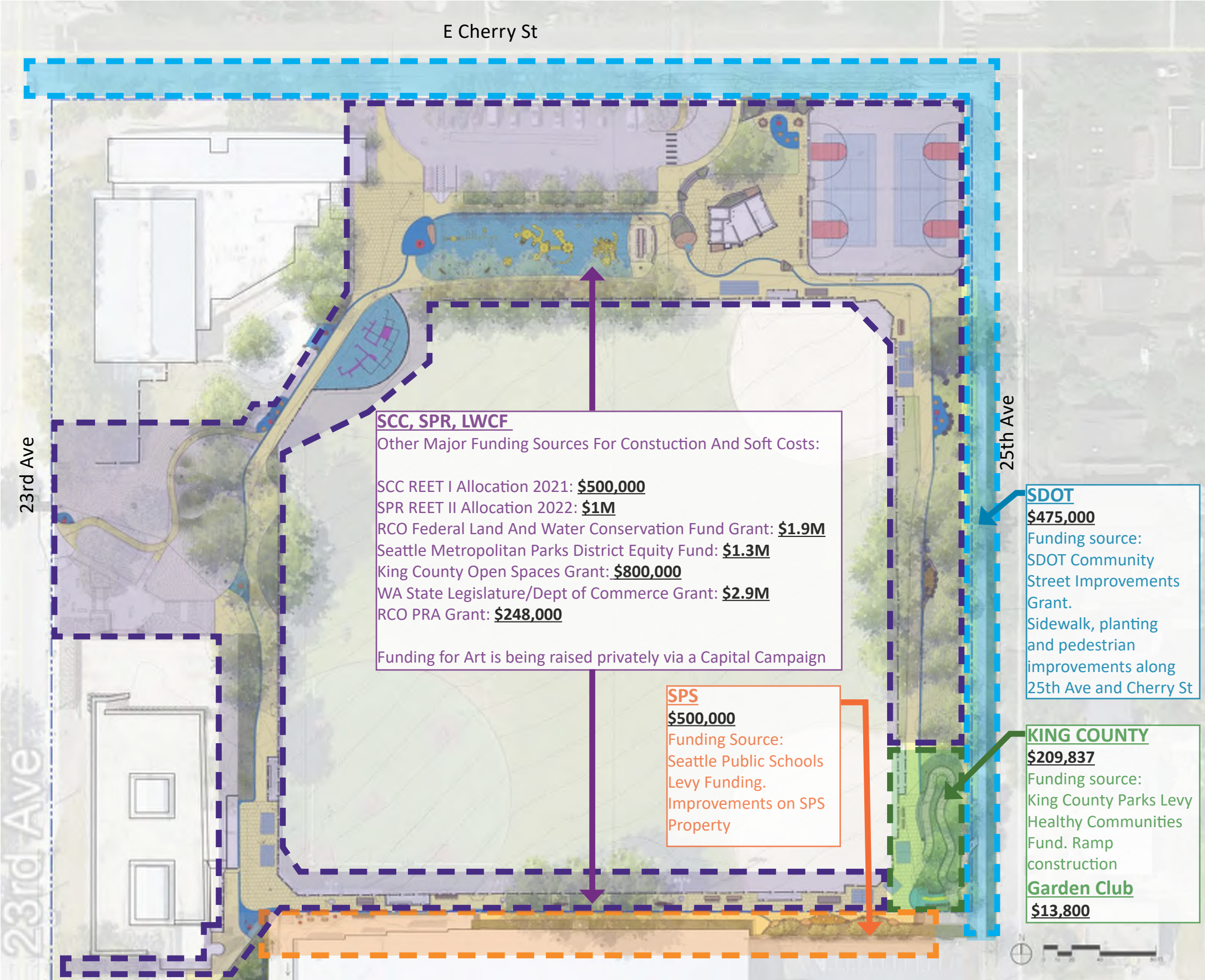
Artist Sketches



# 8 | FUNDING



# FUNDING & IMPLEMENTATION PLAN



**SDC COMMENT 18**

Make sure there is **enough funding available for this project**. To that end, is there the ability to provide additional funding through **fundraising** (friends of park foundation, 3rd party grants)?

## Project Estimate

Engineer’s Estimate  
Including Contingency, Taxes and Escalation      \$7.20 million

Soft Costs (25%)      \$1.9 million

**TOTAL PROJECT BUDGET      \$9.17 million**

Bid Additives + Contingency, Tax, Escalation      \$705,000

**Total Funding Secured:      \$9.44 million**

Pending Allocation Seattle Council      \$700,000

**ART BUDGET      \$1.82 million**

**Private Art Funding Secured:      \$285,000**

Actions: The team is continuing to advocate for Art funding allocation, applying for applicaple public and private grants



# THANK YOU





# APPENDIX



Synthetic Turf Replacement at the SW Field



LAYOUT NOTES

NOTE LEGEND

1.

(INDICATES GENERAL CONSTRUCTION NOTE)

3.

(INDICATES SPECIFIC CONSTRUCTION KEYNOTE)

1.

SEATTLE PARKS STANDARD SYNTHETIC TURF: 2.5" SLIT FILE (LIME GREEN / SPRING GREEN AND TAN / VEGAS GOLD), 25MM PANELIZED SUPPLEMENTAL PAD, GRANULAR CORK & SAND INFILL

2.

PROTECT AND REUSE EXISTING TURF ANCHOR AROUND THE ENTIRE LIMITS OF SYNTHETIC TURF FIELD.

3.

SYNTHETIC TURF INFILL MATERIALS TO MATCH FLUSH WITH PERIMETER CONCRETE CURB.

4.

PROTECT ALL EXISTING UTILITIES TO REMAIN THROUGHOUT CONSTRUCTION.

5.

RESTORE ALL AREAS OUTSIDE OF FIELD IMPACTED BY CONSTRUCTION ACTIVITY.

6.

PROTECT EXISTING CHAIN LINK FENCE TO REMAIN THROUGHOUT CONSTRUCTION.

LAYOUT LEGEND

GREEN SYNTHETIC TURF AND PERMEABLE UNDERLAYMENT

TAN SYNTHETIC TURF AND PERMEABLE UNDERLAYMENT

LIMIT OF SYNTHETIC TURF AND EDGE ANCHOR



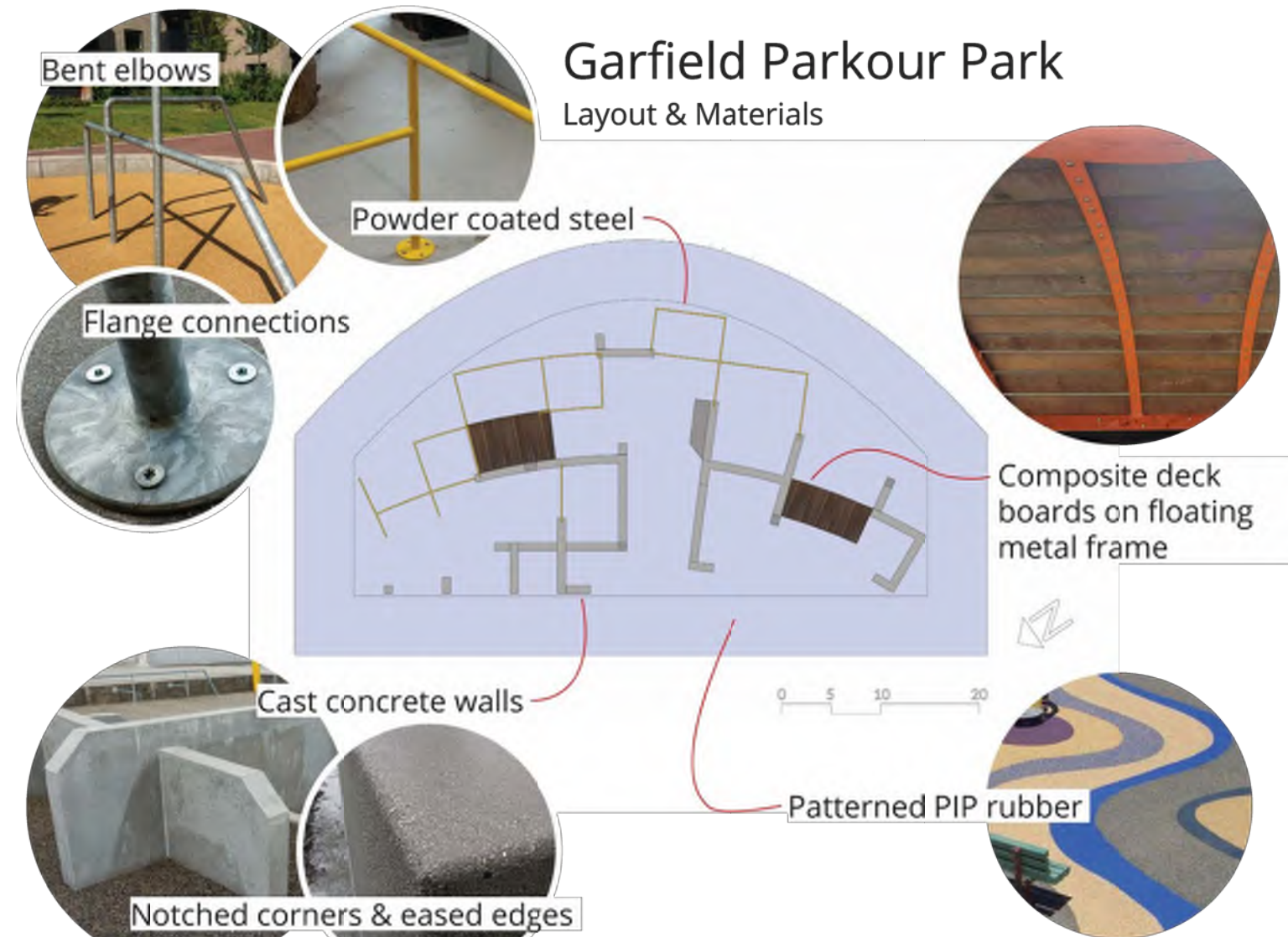


# PARKOUR | BID ADDITIVE#1

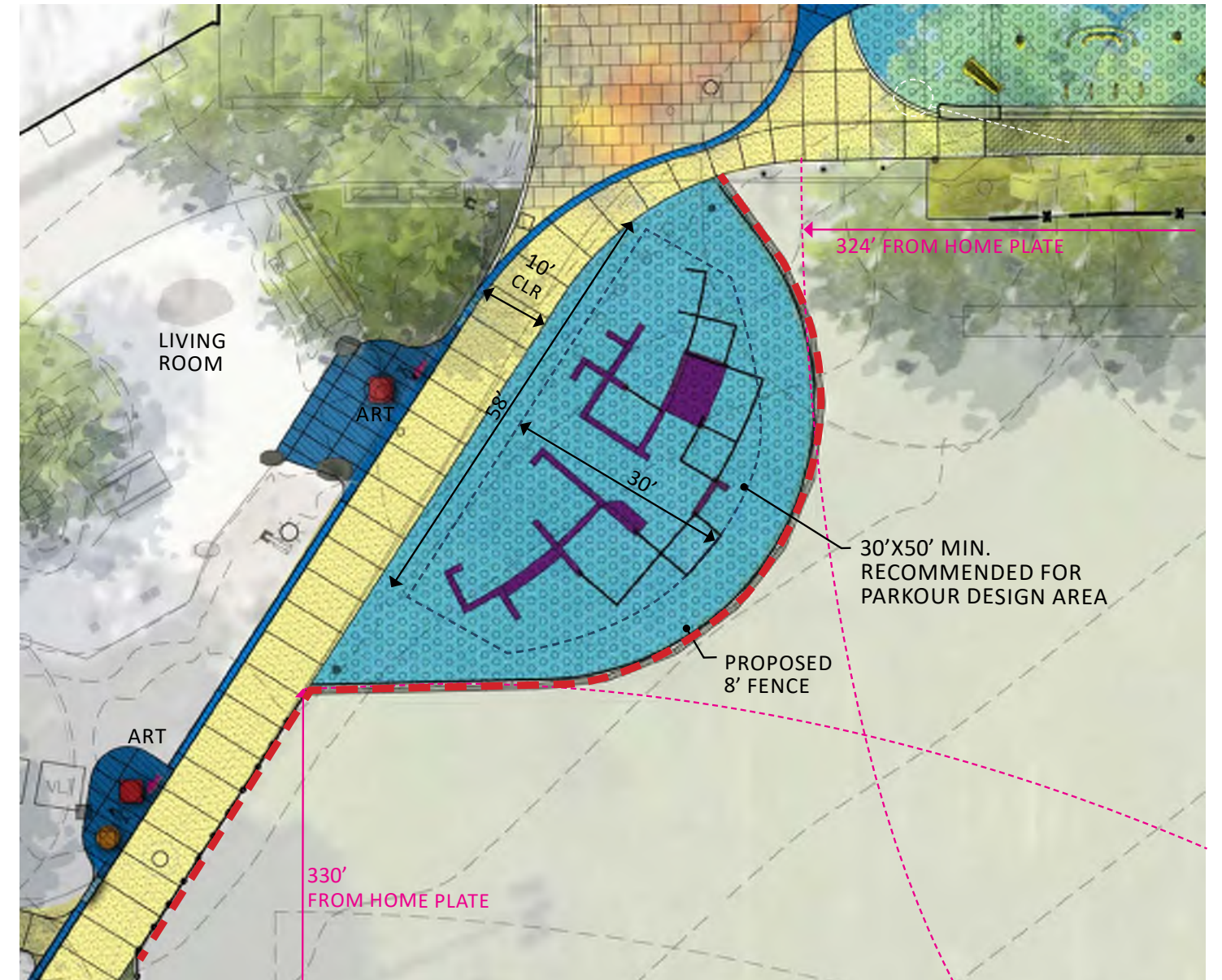


KEY PLAN

## MATERIALS



## 90% Design





## VISUAL INTEREST, MULTI-FUNCTIONAL, SEATING

